

ALBION COLLEGE RECEIVES CHECK FROM BENNETT C. ROOT ESTATE



James C. Hendley (left) of Manchester, attorney for the estate of the late Bennett C. Root, presents a check for \$20,000 to President Louis W. Norris of Albion College. The gift establishes the Bennett C. Root Scholarship in memory of the former Manchester banker and civic leader and is designed to provide assistance to qualified Manchester High School graduates.

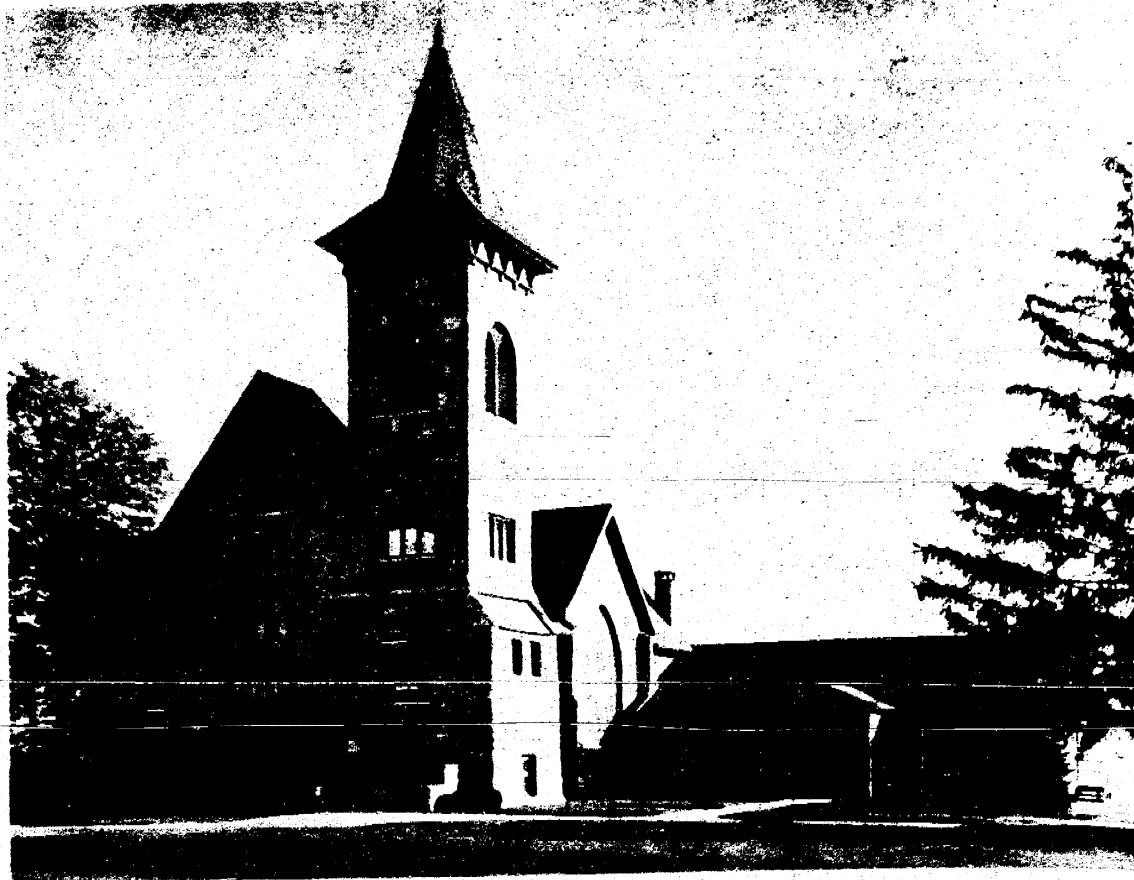
The scholarships will be known as the Bennett C. Root Scholarship. President Norris said. Graduates of Manchester High School, in order to qualify for the award, must meet entrance and financial aid requirements of Albion College. Financial need will be a major consideration in the award. The scholarship will be renewed annually if the recipient maintains the necessary academic requirements.

Mr. Root, a banker, civic leader and a lifetime resident of Manchester, died in August, 1963, at his cottage in Gaylord, Mich. He was 77.

Mr. Root was chairman of the board of directors of the Union Savings Bank in Manchester from 1950 until his death. He became associated with the bank after his graduation from Manchester High School in 1904. He was elected cashier in 1925 and became president in 1949. The bank was founded by Mr. Root's father, Edwin Root, in 1894.

Active in civic, cultural and educational affairs, Mr. Root served as treasurer of the Methodist Church for more than 40 years.

Mr. Root's first wife, Inez Fay Root, passed away in 1956. They had no children. His second wife, Myrtle Purdy Root, now resides in DeLand, Fla.



Continued from page (1)

125th ANNIVERSARY

He was a native son of Bethel and a retired teacher. Both Rev. Menzel and Hutzel say the dialect is one neither a German scholar nor a Yankee would understand—for the old ways of speaking were fast disappearing. This was their reason for writing "The Story of Bethel Church."

In the spot in the cemetery which marks the location of the first log church, stands a granite boulder and bronze plaque. The occupation of the old members was farming primarily, a few were blacksmiths and one was an innkeeper. During the last few years urbanites have built ranch-type homes and commute to nearby industries to work.

The church is often referred to as Evangelical Lutheran and attempts were made during the years by pastors to secure an affiliation with a synod but the membership stubbornly resisted. It took until 1956 for them to consent to join the Michigan-Indiana Synod. Some of the members attend regularly from Saline, Bridgewater, Manchester, Ann Arbor and as far away as Detroit.

In its long history there have been only ten pastors. It was up to Rev. F. Mayer to start preaching English at Bethel. This was not easy for him and he used to tell about his co-worker who had trouble with his members. He concluded his farewell sermon with, "Heute ich Erwas was der Teufel selbst nicht tut—ich verlaesse euch." Translated it reads: Today I am going to do something which the devil himself will not do—I am leaving you!

In the church records the names are often misspelled, due to the fact that many settlers had little practice writing and when asked to sign anything would be embarrassed and ask someone else to sign for them. The names underwent Anglicization—for better or for worse. An Eden Seminary Professor who came from the Rheinland always cautioned his "bubils" to be particularly careful with der pronunciation when schreaking in public. So it is easy to understand how difficult this translation was—for it was neither German nor English.

Pastor Mayer never locked the parsonage doors, saying, "No one will ever enter to take anything, but someone may enter to leave something."

The congregation purchased land across the road from the church in 1878 for "Schaedtz" (sheds) for their horses and the members built their own. If they left the church they could sell to another member but they could never be removed from the row of sheds.

After some 40 years they were torn down for a parking area. The church bell in the new edifice cost \$627. It, like the Angelus, names thoughts to prayer and served as a time piece.

In the early days of the church the men sat on the right and the women on the left in church. This was discontinued in 1909 when the granite church was built. For this the farmers brought in stones, rocks, sand and gravel.

The Church board ruled with a stern hand. In the records it tells that Rev. E. G. Kuenzler presented a bill for \$1.70 for whitewashing the parsonage. The bill was paid but the board resolved that in the future any "repeering" done must be with the permission of the board.

Cont. col. 3 page (12)

Continued from page (1)

EQUAL EDUCATIONAL OPPORTUNITIES

Albert J. Samborna, chairman of the reorganization committee says the plan is not dead for the one Washtenaw County School District. The study will continue. The plan which the committee did adopt now goes to the U-M Bureau of School Services for final clearing before being submitted to a state reorganization committee by the end of the year.

There seems to be little doubt, Mrs. Vogel said, that the state will not approve the plan. Then it will come back to the voters of the district for consideration next spring. Only qualified electors in the proposed districts provided for in the approved plan will vote by proposed districts.

The Manchester representative on the study committee says she sees this as a means of "moving a stumbling block which deprives the smaller schools of the opportunities which the larger school systems enjoy. As I see it, the taxpayer's dollars will go much farther for the educational needs of our young people."

"This I am much in favor of. We cannot over-emphasize the importance of giving every opportunity to our young people in the way of education. Today, they will need every advantage for better education. This program will broaden our facilities," she said.

THE MANCHESTER ENTERPRISE

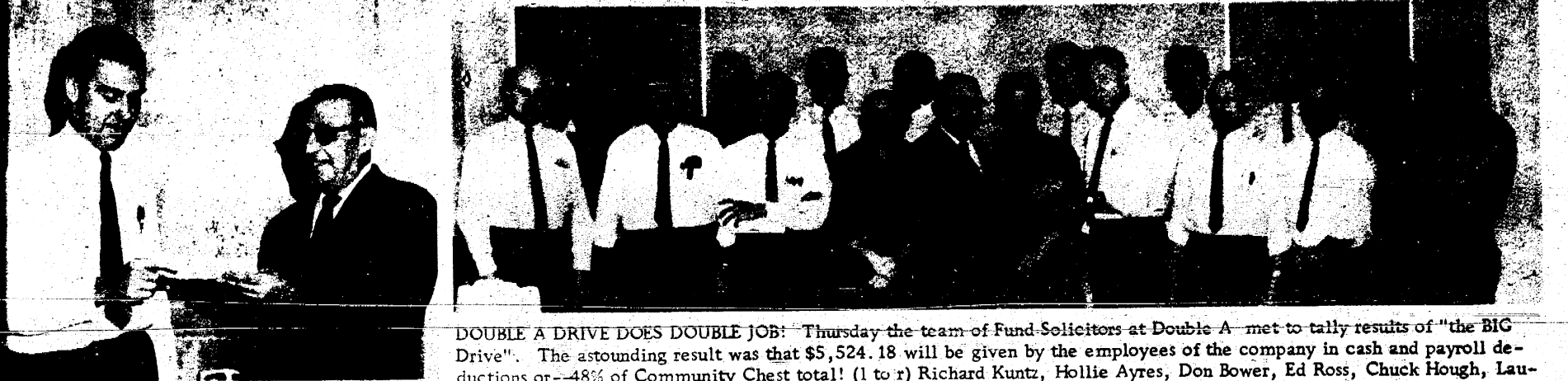
Manchester Library
P.O. Manchester
Complimentary

Year No. 44

Independent in all things. Devoted to County and Home News.

November 4, 1965

10 Cents



UPTON UPS CHECK TO CHEST! (1 to r) Herbert... Vice President of Double A hands a check \$2250. to Luther Klager, Campaign Chairman... is 50% over last year's gift.

DOUBLE A DRIVE DOES DOUBLE JOB! Thursday the team of Fund-Solicitors at Double A met to tally results of "the BIG Drive". The astounding result was that \$5,524.18 will be given by the employees of the company in cash and payroll deductions or—48% of Community Chest total! (1 to r) Richard Kuntz, Hollie Ayres, Don Bower, Ed Ross, Chuck Hough, Lauren Leeson, Bill Hanks, Irvin Gill, Fritz Schiller, Luther Klager (local Chairman of the Chest Drive), Richard Kessler, Jim Beach, Fred Leeman (Manager of Personnel and Industrial Relations), Ambrose Lentz, Al Grau, Tony Escobar, Bernie Pepper, Bob Ahrens and Ron Strong. Missing from the picture, but on the committee were: Virgil Hines, Jim Hestlip, Duane Simmerson and Ray Rossbury.

WATER PROBLEM TO BE DISCUSSED WED., NOV. 10TH

Details on how \$2,000 from a year's chicken broil will be used at Carr Park were presented to the Village Council Monday night by Robert Lowery, a councilman and a member of the Optimist Club which co-sponsors the event with the Jaycees.

He said that his committee has approved purchase of an eight ft slide with 16 foot shoot; a key bar with eight swings and expenditure of \$400 for improving the baseball diamond.

Attaker & Gooding of Ann Arbor will donate stone dust for the diamond, he said.

Council president Eugene Bentzen announced that a representative from Miller, Canfield, Ebeck and Stone, a financial consulting firm from Detroit, will meet at the village hall at 7:30 p.m. Wednesday, Nov. 10 to discuss financing of improvements to water system and the purchase of new equipment—a pump, build and filtering system—in connection with the new well.

Council members as well as interested persons were urged to attend. The water committee of Ed Dan Boutell is chairman will present.

It was announced that the village will enforce off-street parking at the Double A Products Co. Duncan Street when the parking facility at the plant is completed.

It was also reported that payment of the seal coating program

TOWNSHIP TAX RATES EXPLAINED

Clayton Parr, Manchester Township supervisor, explains how the 1965 tax rates are spread to raise the amounts apportioned by the Washtenaw County Apportionment Committee.

The Washtenaw Supervisor says that the Manchester School District will be paying \$58.89 per thousand dollars of assessed valuation this year as compared to \$55.02 for 1964, or an increase of \$3.87.

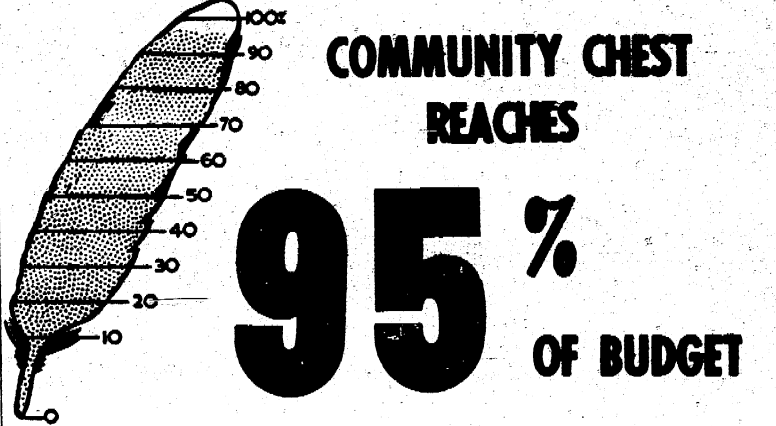
Brooklyn School District is paying \$57.12 in 1965 compared to \$54.12 in 1964. Clinton School District is paying \$54.79 in 1965 as compared to \$49.25 in 1964.

These increases are the result of two proposals adopted by the voters of Washtenaw County last year.

These are: the creation of the Community College which will cost \$2.75 on each \$1,000.00 of assessed valuation. The other was the change from the 15 mill tax limitation to 18 mills. This action had varying effects on the different units.

In the case of the schools this merely shifted some of the extra voted operating to regular operating.

Mr. Parr pointed out, "For instance in the Manchester School District where we have \$24.60 for general operating and \$6.60 special operating for a total of \$31.20 in 1965; last year (1964) we had \$21.20 general operating and \$10.18 special voted for a total of \$31.38. cont. page (5)



COMMUNITY CHEST REACHES 95% OF BUDGET

The Manchester Community Fund and Red Cross Drive quota is not merely a sum of money that the budget committee decides is the area's Fair Share for the needs of humanity far and near, it is a spirit of sharing that has been poignantly presented to the area by Manchester's Double A Products Company this week.

At a meeting last Thursday the team of Fund Solicitors at Double A met with Fred Leeman, Manager of Personnel and Industrial Relations to tally their results. This astounding fact was produced. \$5,524.18 will be given by the employees of the company in cash and on payroll deduction basis this year. This is 48 per cent of the Drive Quota of \$11,444!

At the kickoff meeting in October the Double A Company gift of \$2250 was announced. This is 50 per cent over last year's gift—making the total for the Company \$7,774.18 or 67.9 per cent of this year's quota for the area.

Luther Klager, campaign chairman says, "I defy any Chest in the State to show a similar report from any one industry. This is what I call Community-mindedness! We are proud and pleased with this outstanding endeavor of everyone at Double A."

The total drive as of Monday was 95 per cent of quota for the amount of money that will be finally credited to our area. Just as Manchester receives delayed gifts from other Chests where Manchester people are contacted, Manchester recognizes requests for payment to neighboring Chests from our donors. Then there are always a few who are late reporting or giving and now and then a person is completely missed. In this case, please fill out the blank below:

HAVE YOU BEEN OVERLOOKED DURING OUR CHEST DRIVE IN MANCHESTER?

In spite of wide-range effort of Fund solicitors they may have missed some persons who wish to contribute. If you are one of these persons, you may wish to mail your gift check with this coupon to LOUIS VOGEL, Treasurer, Manchester Community Chest, Manchester, Michigan.

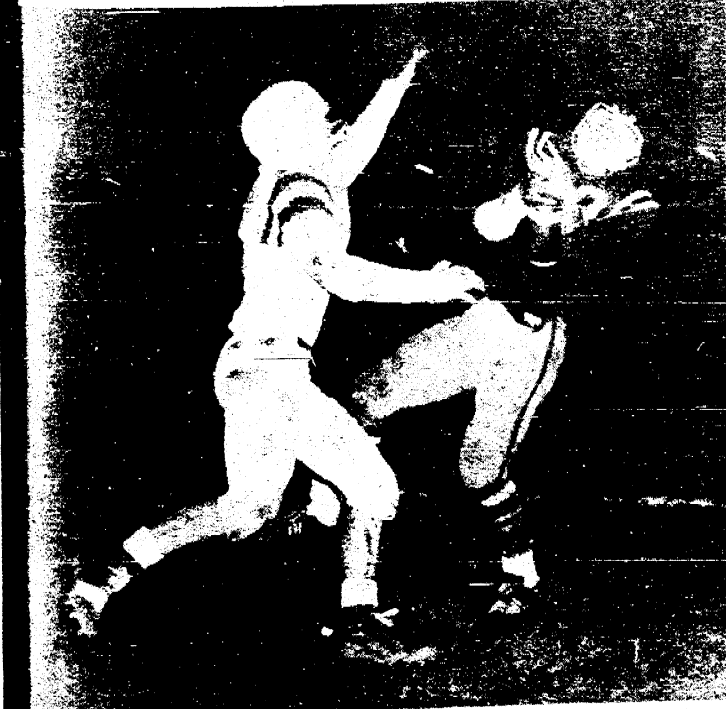
NAME _____ Gift \$ _____ ADDRESS _____

* MAIN STREET It is good to see that the Silhouette Beauty Salon on Main Street is open for business again! Owner Tom McNutt is back on the job after a long absence due to an auto accident. The shop opened on Saturday. If Tom keeps on losing weight he, too, will be just a silhouette!

Ron Alexander has enlisted in the U.S. Army and left for service early Thursday morning. He is the son of the Harold Alexanders. Their daughter Carol was home Monday and Tuesday and is really "up in the clouds" about her new work as an airline stewardess. She was scheduled to be in Los Angeles on Thursday.

There is no time like the present to pass out a bouquet of roses to Harry Macomber who celebrated his first year as an employee of the Manchester Enterprise. When Harry reminded us that he had been here a year, November 1st it didn't seem possible. cont. page (8)

MANCHESTER 'C' CONFERENCE TITLE SHOWDOWN



Rich Pniwski, Dutch's End, making one of his pass catching touchdowns.

Manchester and Clinton High Schools' footballers set up their Lakeland C Conference title showdown Friday by romping to victories last Friday.

The Flying Dutchmen got 47 points in the first half in a 53-13 rout of Ann Arbor University High.

Next Friday, Clinton, 7-0 over all and Manchester, 6-1, match 5-0 league records at Manchester. Quarterback Pat Wallace hurled three touchdowns passes and ran for another, bringing his season production total to 23, 21 on passes.

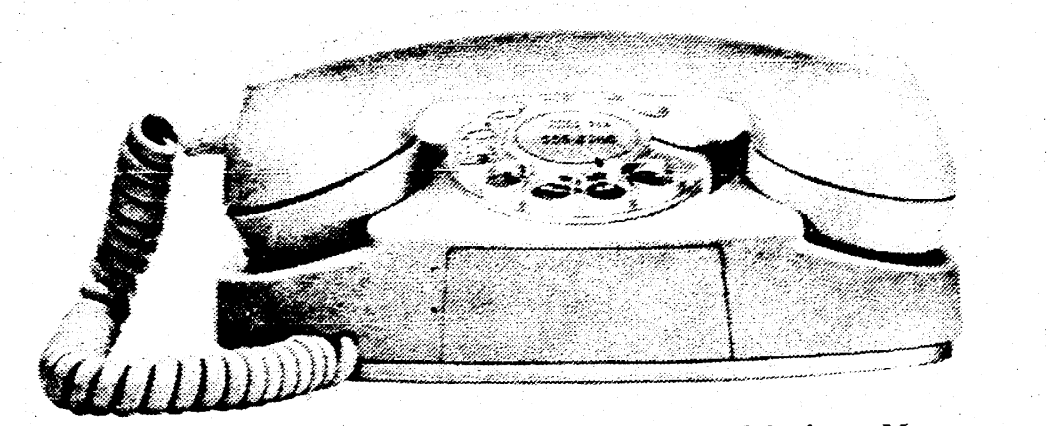
His scoring aeriels against U. High were 17 yards to Rich Pniwski, 12 to halfback Jim Fielder and another 15-yarder to Pniwski. He scored himself from the seven.

The other Dutchmen's touchdown came on fullback Mike Nickerson's smash from the five, halfback Dick Fielder's run from the one and halfback Mickey White's 12 and 20-yard dashes.

Manchester rolled up 260 yards passing and 250 yards rushing for a total of 510.

Add an extension phone

for your convenience a touch of color a gay note privacy in phoning your eye's delight security at night



Call our Business Office today — or ask your Telephone Man

Michigan Bell Part of the Nationwide Bell System

Two

ENTERPRISE DEADLINES

1. Weekend weddings - Thurs. or Fri. before wedding.
2. Reports on meetings during the previous week - noon Mon.
3. Monday meetings - noon Tues.
4. Advance stories on coming events - noon Monday

NOTICE: Earliest copy receives, PRIORITY

Church Services

- BAPTIST CHURCH**
Rev. E. P. Cranston
Bible School . . . 10 A.M.
Worship Service . . . 11 A.M.
Youth Groups . . . 7 P.M.
Evening Worship 7:45 P.M.
Wednesday Evening Prayer & Bible Study . . . 7:45 P.M.
- EMANUEL EVANGELICAL**
Rev. Ralph Knauth
Sunday School . . . 9:15 A.M.
Worship Service 10:30 A.M.
- Evangelical & Reformed BETHEL CHURCH**
Rev. T. W. Menzel
Sunday Worship . . . 10 A.M.
Sunday School . . . 11 A.M.
- IRON CREEK CHURCH**
Rev. Thomas E. Hicks
Sunday Worship . . . 10 A.M.
Sunday School . . . 11 A.M.
Young Peoples
Evening Service . . . 8 P.M.
Thurs. Evening . . . 7:30 P.M.
- METHODIST CHURCH**
Rev. Oscar W. Cooper
Sunday School . . . 9:50 A.M.
Morning Worship . . . 11 A.M.
St. M. V. F. 7 P.M.
Jr. M. V. F. 8 P.M.
Bible Study and Prayer Meeting Tues. Eve. . . 7 P.M.
- ST. MARY'S CHURCH of Manchester**
Fr. Raymond Schinler
Sunday Masses
S.A.M. 9:30 A.M. 11:15 A.M.
Wed. & Sat. Mass. . . 8 A.M.
First Friday 8 A.M.
- ST. JOHN'S E & R CHURCH**
Freedom Township
Rev. J. Tracy Lake, Pastor
Worship Service 9:30 A.M.
Sunday School . . . 10:30 A.M.
- Staron Evangelical United Brethren Church**
Rev. John F. Police
Sunday School . . . 11 A.M.
Worship Service . . . 11 A.M.
- ZION LUTHERAN CHURCH** Rogers Corner
Rev. Stephen Peterson
Sunday School . . . 10 A.M.
Church Service . . . 11 A.M.
- THE MANCHESTER ENTERPRISE**
ESTABLISHED 1907
George and Lois Lord
Publishers and Editor
Published Every Thursday.
Entered as Second Class
March 15, 1915 at Post Office at
Manchester, Michigan.
Subscription Rates
\$5.00 year - Regular
Cash \$2.50 a month.
For Advertising Rates Call
Garden 8-3388

CHILDREN'S PICTURES TO BE TAKEN FREE

Monday, Nov. 8 is the big day for the picture taking of your youngsters! The Manchester Enterprise is having pictures taken of all children who are brought by their parents or other guardian.

The Enterprise wants a picture of your child to print in its forthcoming features "Citizens of Tomorrow", a series of photographic studies of local children. The more we get the better the feature will be, so the cooperation of the mothers and fathers is urged.

It often seems to parents that children are little one minute and grown up the next, so fast does a child's growing stage pass. Here is a splendid opportunity to catch a likeness of your child or children at the present stage for the pleasure you will get out of it in future years and for the pleasure you will enjoy in seeing it in print. You will want to clip it from this, your home town newspaper, and preserve it for the youngster when he or she grows up.

There is absolutely no charge or obligation for taking the pictures. Parents don't even have to be a subscriber to the Enterprise, nor even a reader. You do not have to purchase pictures either, though you may obtain additional prints by arranging direct with the Studio representative if you want to. That is entirely up to you!

Appointments may be made by calling Mrs. John Schneider at GA-8341.

BUSINESS WOMEN TO MEET WITH MRS. AYRES

The Business and Professional Women will meet at 7:30 p. m. at the home of Mrs. Hollie Ayres.

Mrs. Ayres, former owner of Lilly Ann School of Charm and present Executive Secretary of the Modeling Association of America will speak on "What makes a woman unforgettable and a pleasant memory."

There will also be an open discussion concerning the plans for the new school.

MRS. JAKE WEINLANDER CELEBRATES 84th BIRTHDAY

Mrs. Jake Weinlander celebrated her 84th birthday on Sunday, October 24. Her birthday was October 22.

Guests at the home of her daughter and husband, Mr. and Mrs. Russell Van Smith were Mr. and Mrs. Robert Rigg of Mt. Pleasant and Mr. and Mrs. Sam Brown.

A decorated cake centered the dinner table.

POURS AT TEA

Mrs. Louis D. Vogel, 11437 Pleasant Lake Road, Manchester, was among those who poured at a tea Wednesday afternoon, Nov. 3 at the home of Mrs. Harlan Hatcher, Ann Arbor. The tea, given by alumnae of seven eastern women's colleges, was for all women in this area who have ever attended Bryn Mawr, Barnard, Mount Holyoke, Smith, Radcliffe, Vassar, and Wellesley Colleges.

Mrs. Vogel is a Radcliffe alumna.

PLEASANT LAKE PTA TO MEET NOV. 9

The Pleasant Lake PTA will meet Tuesday, November 9 at 8:00 p. m. at the Pleasant Lake School.

On the program will be a color film on Gemini 4 and the County Administrators of Special Education will discuss their duties and program.

METHODIST CHURCH LISTS COMING EVENTS

There will be open house Sunday, November 7 at 10:00 a. m. during the Sunday School hour observing Christian Education on Sunday.

It is hoped that parents will take this opportunity to visit the classes that their children attend. There will be hosts present to guide the parents to the various classrooms.

At 8:00 p. m. on Wednesday, Nov. 10 there will be a meeting for Sunday School Teachers and members of the Commission on Education.

The official board of the Methodist Church will meet at 8:00 p. m. on Thursday, November 11.

COMING EVENTS

Nov. 7 the Sharon EUB Church will have Rally Day at 10:00 a. m. Attendance banners will be awarded at that time.

Thursday, Nov. 11 the WSWS Study Class will meet at 10:00 a. m. at the church. Members are asked to bring sack lunch. Dessert and coffee will be furnished by the hostess.

Willing Workers Circle of the Sharon EUB church will meet Thursday, Nov. 11 at the Sharon Church with Mrs. Clyde Geske in charge of devotions. Mrs. Robt. Pratt, Mrs. Walter Treib and Mrs. John Pratt are on committee.

A Thru Offering program will be held at the church on Sunday, Nov. 21 at 8:00 p. m.

River Raisin Farm Bureau will meet at 8:05 p. m. at the Sharon Town hall, Wednesday, Nov. 10.

HOME ECONOMICS CALENDAR

On November 4 the Iron Creek Study Group will meet at the home of Mrs. William Rhoads at 10200 Grossman Road.

Also on November 4 the Ellsworth Extension Study Group will meet with Mrs. William Luckhart at 601 Ellsworth Road.

AT CHURCH MEETING

Mrs. Louis Vogel of 11437 Pleasant Lake Road, Manchester, attended the annual meeting of the members of the Board for Homeland ministries of the United Church of Christ on October 26 and 28 at the Hilton Hotel in Detroit.

The focus was on forms of Christian evangelism for a new age when the group convened.

On the agenda was proposals for new styles of mission and evangelistic thrusts into areas of modern society.

LIBRARY NOTES

What's happening at the Township Library this month?

Several hundred new fiction and non-fiction books have been loaned through the Washtenaw County Library. A phonograph has been added and may be taken out by adults. Many new picture books have been ordered for K-3 readers.

Steps are being taken to obtain the Indian skeleton that Manchester Jan Huber uncovered last month.

Hours at the library are: Monday, Tuesday and Friday from one to six and Wednesday from 1 p. m. to 9:00 p. m. and Saturday from 9:00 a. m. to 12 noon.

LOUCKS ENTERTAIN YOUNG PEOPLE

The Junior Group of the Assembly of God Brightmore Tabernacle Sunday School enjoyed a weekend at the Raymond Loucks' residence and left a bus which they plan to use during future visits to the Loucks home here.

Their niece, Miss Judy Duncans of Detroit brought a group of church young people to the Loucks home for a cook out last Sunday.

ENTERTAINS NEICES

Mr. and Mrs. Albert Stokes of Lincoln Park entertained their neices at a noon luncheon last Friday.

Among those who attended were Mrs. L. V. Kirk and Marie and Margaret Schneider of Manchester, Mrs. Herbert Westphal and Priscilla of Saline, Mrs. Harold St. John of Ferndale and Mrs. Carl Brownfield of Detroit.

SENATOR BURSLEY REPORTS

The passage of the Welfare Budget Bill, signed by Acting Gov. William Milliken last week, will result in a savings for Washtenaw County, through the blending of the county social welfare and state social aid agencies, Senator Gilbert E. Bursley reported to his district.

On the basis of the expenditures for the past 12 months, ending June 1965, Washtenaw County would have received \$80,390.48 if the bill had been passed.

The changes of the allocation formula from 30/70% to 40/60% would have increased Washtenaw County's money from \$115,092.82 to \$195,483.30.

The new act, effective October 1, 1965 provides for matching 40% direct relief, administrative and net operating costs of medical care facilities.

The act also provides, Senator Bursley said, that with the state-county agency merger, if a County spent more than 1 mill of its assessed value on welfare, the state and federal government will assume all costs beyond that amount.

A literal application of the new formula in counties with costs exceeding 1 mill would probably result in a decrease, but the law is permissive which allows the state to pay more where local economic conditions warrant.

Thus the social welfare department will pay more than 40%, so that the county would not have a reduction in state funds, Senator Bursley said.

The total welfare costs in Washtenaw County during the consideration of the Bill, amounted to some \$388,708.26.

SEVERAL LOCAL PEOPLE INJURED IN ACCIDENT

Several area people were injured in a car-tractor accident last Friday in Jackson County on Francisco Road, south of the New York Central railroad tracks.

Mrs. Rose B. Nortley of Manchester, driver of the car suffered a fractured pelvis.

The tractor was operated by Emerson A. Koebbe, 65, of Dearborn. The accident occurred at 4:20 p. m.

Passengers in the Nortley car injured were: Bonnie Fortman, 15, of Manchester, fractured left arm and cuts and bruises.

MRS. HERBERT SCHNEIDER INJURED IN ACCIDENT

Mrs. Herbert (Elsie H.) Schneider, 49 years, died enroute to St. Joseph Mercy Hospital, Ann Arbor Friday evening. Her home was at 415 East Main Street, Manchester.

She was born June 3, 1916 in Detroit, the daughter of Edward and Ida Rohrbach Mester. She was married to Herbert Schneider on Sept. 20, 1940 in Wauseon, Ohio. They lived on a farm in Freedom Township until moving to their present home in 1957.

She had been employed at Arlans in Ann Arbor for the past two years.

She was a member of the Emanuel United Church of Christ in Manchester.

Mrs. Schneider is survived by her husband, three daughters, Mrs. James (Eunice) Scully of Manchester, Mrs. Gary (Eileen) Thundor of Benton Harbor and Miss Kathleen Schneider at home; and one son, Michael also at home; three grandchildren; her father, Edward Mester of Chelsea and one brother, Edward Mester of Warren.

Funeral services were held at 1:30 p. m. at the Jenter Funeral Home in Manchester with the Rev. Ralph Knauth officiating. Burial was in Oak Grove Cemetery.

WILLIAM FORTMAN, 13, of Manchester, hand cuts and bruises. Teresa Nortley, 11, of Manchester, face and knee cuts and bruises. Witnesses said Koebbe turned in front of the Nortley car. He was charged with failure to yield the right of way.

Village of Manchester

ORDINANCE NO. 71

AN ORDINANCE TO AMEND AN ORDINANCE ENTITLED: AN ORDINANCE TO ESTABLISH DISTRICTS IN THE VILLAGE OF MANCHESTER; TO REGULATE THE USE OF THE LAND AND STRUCTURES THEREIN; TO REGULATE AND LIMIT THE HEIGHT AREA BULK AND LOCATION OF BUILDINGS; TO REGULATE AND RESTRICT THE LOCATION OF TRADES AND INDUSTRIES AND THE LOCATION OF BUILDINGS DESIGNED FOR SPECIFIC USES; TO REGULATE AND DETERMINE THE AREA OF YARDS, COURTS AND OTHER OPEN SPACES; TO REGULATE THE DENSITY OF POPULATION; TO PROVIDE FOR A BOARD OF APPEALS, AND ITS POWERS AND DUTIES; AND TO PROVIDE A PENALTY FOR THE VIOLATION OF THE TERMS THEREOF.

The Village of Manchester Ordains:

Section 1. That Section 3.02 of an ordinance entitled: An Ordinance to Establish Districts in the Village of Manchester, to Regulate the use of land and Structures therein; to Regulate and Limit the Height, Area, Bulk, and Location of Buildings; to Regulate and Restrict the Location of Trades and Industries and the Location of Buildings Designed for Specific Uses; to Regulate and Determine the Area of yards, courts, and Other Open Spaces; to Regulate the Density of Population; to Provide for a Board of Appeals, and its Powers and Duties; and to Provide a Penalty for the Violation of the Terms Thereof; be, and the same is hereby amended to Read as follows:

Section 3.02 ZONING MAP

The Zoning Map of the Village of Manchester shall be and hereby amended to change the designation of premises hereinafter described on said map from District "A-1" Agricultural to "R-3" Multiple-Family Residence District. Said property being described as:

Land bounded upon the North by the River Raisin, upon the East by the River Raisin, upon the south by the Detroit, Hillsdale and Southwestern Railway, now L. S. E. M. S. R. R., Ypsilanti Branch, and upon the West by said River Raisin and the East line of Washington Street; also land situate on the North side of L. S. E. M. S. R. R., between Washington and Union Streets, in Block No. 28 R. R., between Washington and Union Streets, in Block No. 28 R. R., and 29, Village of Manchester, Washtenaw County, Michigan, according to the Plat thereof as recorded in the Office of the Register of Deeds, Liber "L", page 29 and bounded on the North by the River Raisin.

Section 2. This ordinance shall take effect and be in force on and after twenty days from its legal publication.

Made and passed by the Manchester Village Council at a regular meeting thereon on October 19, 1965.

Eugene E. Beutelschneider, President
Lyle A. Widmayer, Village Clerk

DON'S BEEF BUFFET

Downtown Tecumseh

U. S. PRIME ROAST ROUND OF BEEF OUR SPECIALTY

SATURDAY IS FAMILY NIGHT

Delicious Roast Round of Beef, Potatoes, Roll and Butter, Salad, Coffee or Tea.

\$1.49

CHILDREN UNDER 12 --- 85¢

OPEN
Daily 11 a.m. to 8 p.m.
Sunday 11 a.m. to 7 p.m.
Closed Mondays

Your hosts: Edna & Don Smith

PHONE TECUMSEH 423-4338



Hallmark Cards
GIFT WRAPS



Burch's MANCHESTER DRUG
Prescriptions - Cosmetics
138 Main St. Co 8-4721

BAKE SALE

FRIDAY, NOVEMBER 12th

1:00 P.M. to 5:00 P.M.

at
SUTTON AGENCY

Listings needed in Manchester Area!

Have buyers wanting homes in and near Manchester!

CALL
Joyce E. Ditz
3521 Surrey Drive Saline
429-4234

HAVE HOMES AVAILABLE IN SALINE AREA

W.H. GROSS, Broker

Phone 429-9572

THIS NEWSPAPER



to PUBLISH
Picture of
Local Children
(INCLUDES RURAL)

FREE *There is No Obligation!*

- Just take your children to the place and at the time given below.
- Several poses will be given FREE of charge by an expert children's photographer from WOLFE STUDIOS.
- All poses will be shown . . . Select your favorite pose for publication and your child's picture will appear in this newspaper at a later date.
- You may, if you wish, order photographs for gifts at expenses from the Studio . . . but this is entirely up to you.

WHERE IS THE TIME AND PLACE
MONDAY, NOVEMBER 8
10 A.M. to 5 P.M.
at the
K of C HALL
SEE NEWS STORY FOR ADDITIONAL DETAILS

THE LOCKER PLANT DOES IT BEST!



PROCESSING
Cutting, grinding, boning, and trimming of meat can best be done by the locker plant which has the equipment, the experienced help, and the "know-how" to do the work economically, and expertly—without waste



WRAPPING
Proper packaging of foods for freezing is all-important. The locker plant uses the correct moisture-vaporproof wrappings and applies them with the latest methods.



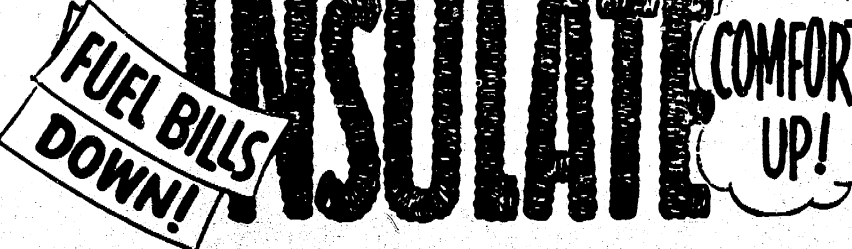
SHARP-FREEZING
It is essential that foods for storage in a locker or home freezer be quick-frozen at sub-zero temperatures. We have refrigeration equipment capable of freezing huge quantities of foods.



ZERO STORAGE
All frozen foods should be kept at a constant zero temperature. The zero service we offer is the cheapest refrigeration in the world . . . a frozen food locker at the cost of a daily newspaper!


We Also Carry a Complete Line of
FROZEN FOODS and TOP QUALITY MEATS
Serving the Community over 17 years
MANCHESTER FROZEN FOOD LOCKERS
319 Morgan St. Manchester Phone GA 8-5031

INSULATE



If your home was uncomfortably warm this summer, this is a warning sign that you'll also be wasting heat this winter unless you

INSULATE NOW



FOR YEAR-ROUND COMFORT

We stock a wide variety of reputable - brand, easily - applied insulation materials. Buy NOW, for added comfort and fuel savings this winter.

Bridgewater Lumber Co.

GARDEN 8-8059
8370 Boettner Rd., Bridgewater
HAZEL 9-7088

WHEEL ALIGNMENT

BALANCING-FRAMES-AXLES
STEERING-BRAKE SERVICE



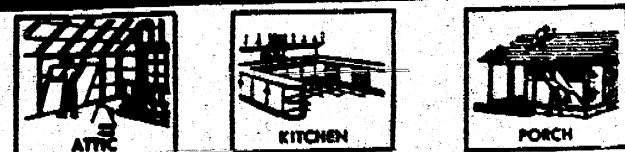
JOHNNIES SERVICE

DIAL
Harrison 3-3830
3349 RUSSEL ROAD
TECUMSEH

S & W BUILDERS

NORM WALZ CONTRACTOR

REMODELING



● GARAGES ● BARNs ● HOMES ● COTTAGES

● BUILDING LOTS AVAILABLE

FREE ESTIMATES

BUSSINES PHONE
GA 8-8160

RES. PHONE
GA 8-9601

MANCHESTER TEAM

WOMEN BOWLERS

Team	Won	Lost
Schaffer Lumber	23	9
Double A Products	23	9
Gills TV	21	11
Union Construction		
	18	14
Grossman-Huber	13	19
A & B Market	11	21
Lannoms	10	22
Man. Bakery	9	23
High Team 3 Games		
Schaffer's	2267	
Double A Products	2239	
High Team Game		
Schaffer's	801	
Double A	796	
Ind. High 3 Games		
V. Sutton	556	
J. Schaffer	552	
R. Schmidt	540	
High Team 3 Games w/h		
Gill's	2253	
A & B Market	2133	
High Team Game w/h		
Gill's	797	
Bakery	780	
Ind. High Game		
B. Flood	211	
V. Sutton	206	
J. Schaffer	201	
Ica Schaffer	4-7-6-10 Split	

MANCHESTER TOWN CLUB

BOWLING NEWS

Team	Won	Lost
Sportsman Club	28	4
S & W Builders	22	10
Ready Mix	17	15
Tom Marshall	17	15
Laundromat	15	17
Uphaus Drug	15	17
Grossman-Huber	14	18
Speedway	12	20
Seller's Saw Mill	8	24
Double A	12	20
Team High Series		
Sportsman Club	2280	
Team High Series w/h		
Uphaus Drug	2101	
Team High Game		
Sportsman Club	805	
Team High Game w/h		
S & W Builders	774	
Ind. High Series		
Tootie Armentrout	525	
Ind. High Game		
Tootie Armentrout	210	

CHANGE MEETING DATE

The regular meeting of the Manchester Chapter 101 of OES has been changed from Nov. 5 to November 12 at 8:00 p.m. at the Masonic Hall.

RAVETROUGHING and Lightning Rod SERVICE

MONCRIEF FURNACE

WILSON METAL SHOP

13250 Sharon Hollow Road
PHONE 428-8468 MANCHESTER MICH.

OPEN BLOOD CLINIC REMINDER

There will be an open blood clinic on Friday, November 12 from 3:00 to 8:30 p.m.

Those wishing to make appointments are asked to call 662-5346. This open clinic will be held at the American Red Cross Sub-Center at 2729 Packard Road, Ann Arbor.

Those who missed the Red Cross Clinic here may donate to the local Club's account. Donations may also be made to a particular patient that has used blood and does not belong to a club.

FISHER BOYD PLANT TO HAVE OPEN HOUSE

A day-and-a-half open house will be held at the new Fisher Body plant two miles south of Tecumseh beginning Thursday afternoon, Nov. 18. It was announced by Lewis J. Lamm, plant manager.

Open to the general public as well as families and friends of Fisher Body employees, the plant will welcome visitors between 4:00 and 8:00 p.m. on Nov. 18, and on November 19 between 10:00 a.m. and 3:00 p.m. and again from 4:00 to 10:00 p.m.

Visitors to the plant will also see the futuristic General Motors car, the Chevrolet Mako Shark II Corvette, and some of the winning entries in the 1965 Fisher Body Craftsman's Guild model car competition. Light refreshments will be served to guests in the plant cafeteria, and there will be an open house souvenir for all.

The tour will take visitors through the administrative offices; the mechanized storage area where bolts of upholstery materials are stacked two stories high; the material cutting, embossing and sewing areas; and the plant cafeteria.

Ground was broken for the new Fisher Body Tecumseh plant in July 1964. Today, employment is approximately 700 and is steadily increasing as training of personnel permits.

The new facility is located south of Tecumseh on Occidental Highway just north of Gady Road.

WASHTENAW COUNTY AT EXPOSITION

Washtenaw County is among the Michigan counties from which entries are reported for the 1965 International Live Stock Exposition, to be held November 26 through December 4th.

McCalla Brothers, of Ann Arbor will be exhibiting in the Chester White swine competitions of these events which will celebrate its 66th anniversary this year as the country's largest stock show.

It will be held in the 13-acre International Amphitheatre at the Chicago Stock Yard. Fourteen Horse Shows are scheduled during the exposition's 9-day run; and a Championship Rodeo will be featured at each, according to the show management.

DISTRICT WOOL CONTEST TO BE HELD HERE

The District Two contest of the "Make It Yourself With Wool" contest will be held from 9:00 to 4:00 p.m. at the Emanuel United Church of Christ hall here on Sat. November 27.

The contestants will model their garments in a fashion show at 1:00 p.m. The public is invited to this showing.

The "Make It Yourself With Wool" contest is a sewing contest for girls between the ages of 10 and 21.

Mrs. Lawrence Boettner of 9319 Austin Road, Bridgewater is the District Two Chairman. She says that there is still time to enter the contest before the deadline of November 13th.

Included in District Two are Hillsdale, Jackson, Lenawee, Monroe and Washtenaw Counties. More information on the contest can be obtained by calling Mrs. Boettner at 429-7413 or writing to her at her home address.

HOOPER APPOINTS VICE PRESIDENTS



Robert R. Rosene, Hoover Ball and Bearing Company, has announced that Howard R. Rosene have been appointed as divisional vice-presidents with responsibilities in various die casting and plastic production operations.



Donald A. Oppenheim, located in Michigan: Universal Die Casting, Utilex, Damor, Manchester, and Universal Plastics.



Howard Russ joined the organization in 1945 and has served in a number of supervisory and executive capacities.

Donald A. Oppenheim was promoted from general manager to vice president of Hoover's Glenvale Products Division in Glenvale, Arkansas. Oppenheim joined the company in 1955 as a foreman and later became an industrial engineer for the Utilex Division. The Glenvale Division produces aluminum and brass die cast products for the plumbing trade.

Robert R. Rosene was promoted from sales manager to vice president of sales for the Glenvale Products Division. Before joining the division in 1955 as a sales engineer Rosene was associated with the George A. Kreplin Corporation of California, the AC Spark Plug Division of General Motors and the Union Oil Company. Hoover Ball and Bearing Co. operates sixteen divisions which produce a wide variety of metal and plastic products for capital goods and consumer markets.

JERSEY GUERNSEY MILK

STILL AVAILABLE
WE CARRY A COMPLETE LINE OF
DAIRY PRODUCTS
Hirth Bros. Dairy

104 West Washington Phone NO 8-7891

It Can Happen to You...



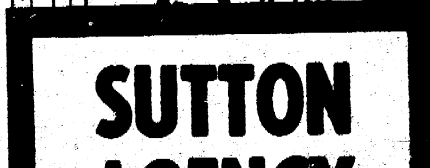
Yes, a Hastings Mutual 4-in-1 Homeowners Policy covers just about anything that can happen to your home. And, the cost is comparatively low, too!

Goodness, Jane, am I ever glad our insurance will pay most of the repair costs for that damage, and the removal of the tree.

What kind of insurance do you have?

We have a Four-in-One Homeowners Policy written by Hastings Mutual Insurance Company.

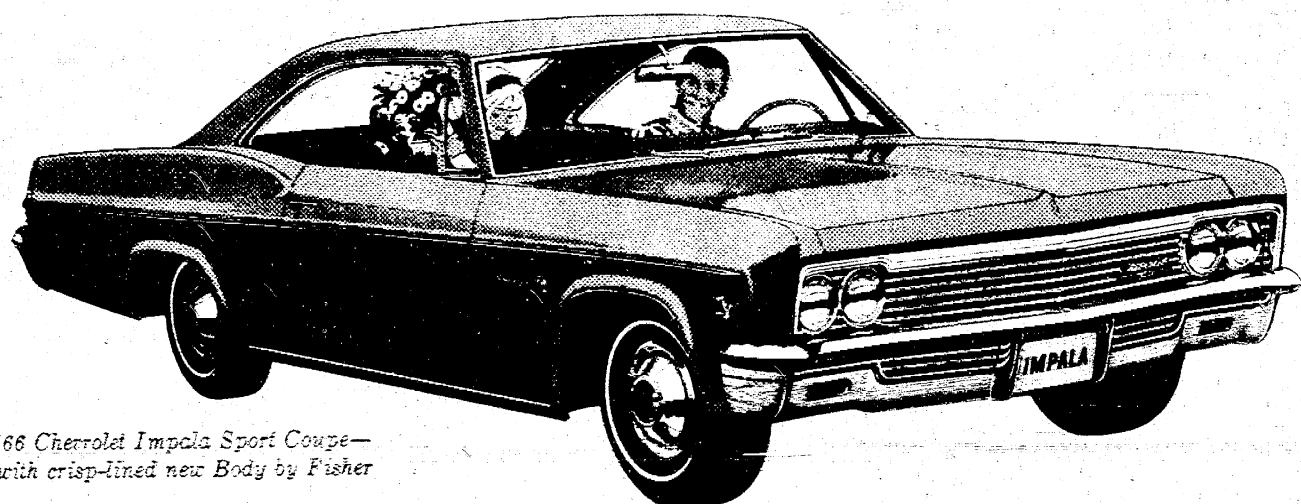
Does it cover just about anything that can happen to our homes?



SUTTON AGENCY

Manchester, Mich.
HASTINGS MUTUAL INSURANCE COMPANY
Homeowners - Farmers
Complete Commercial Package

ENRICHED 7 WAYS



'66 Chevrolet Impala Sport Coupe— with crisp-lined new Body by Fisher

1. NEW TURBO-JET V8's. Three versions of this remarkably efficient engine are available, with ratings of 325 hp, 390 hp and 425 hp. 2. RICHER NEW INTERIORS. They're impressive even by Impala standards. And the fine hand of Body by Fisher craftsman-

ship is very much in evidence. 3. CRISP NEW STYLING. More elegant from V-shaped grille to new wrap-around taillights. 4. A JET-SMOOTHER RIDE. Refinements in body, frame and suspension including Full Coil springs tailored to each body style,

make the ride even gentler. 5. RACY SUPER SPORT MODELS. Pick an Impala SS Coupe or Convertible, complete with new Strato-bucket front seats and eye-catching console. 6. NEW SAFETY FEATURES. They include windshield washer, two-speed electric wipers,

rear seat belts and backup lights—all standard on every '66 Chevrolet. 7. OVER 200 CUSTOM FEATURES. You can have a field day ordering luxuries like FM stereo radio. Want to raise your standard of living it up? Your Chevrolet dealer's the man to see.



Chevrolet's Jet-smoother '66 IMPALA

See the new '66 Chevrolet, Chevelle, Chevy II, Corvair & Corvette at your Chevrolet dealer's

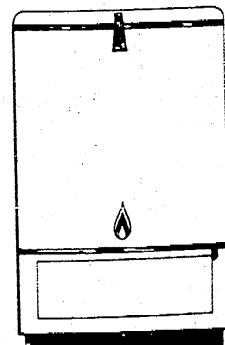
TIRB CHEVROLET CO.
MANCHESTER, MICHIGAN

21 5077

Nobody likes a "Trash Burner"

GET A CLEAN
SMOKELESS
ODORLESS

GAS INCINERATOR



BURN YOUR GARBAGE AND TRASH INDOORS!

End your garbage problem once and for all! A new Gas Incinerator in your basement or utility room conveniently disposes of all burnable garbage and rubbish without smoke, odor, or noise, for only pennies a day.

SAVE \$20 on installation of new, smokeless, odorless Gas Incinerators—SEE YOUR DEALER WHILE THE SALE IS ON!

Published by Consumers Power Company

L.V. KIRK Electric Wiring & Supplies

112 ADRIAN STREET

Manchester, Michigan

GARDEN 8-3701

CHILD'S LEGAL RIGHTS

The need for social and psychological treatment of a child brought into Juvenile Court-- cannot and need not--supplant the child's legal rights, says Referee Ross W. Campbell of the Washtenaw County Probate Court.

Writing in the current issue of the Michigan State Bar Journal, Campbell says that when a lawyer handles cases in Juvenile Court the become engaged with more social counseling than in any other form of legal practice.

He said the unique functions of the juvenile court "often create a strong technical defense for his client, in a juvenile court case "successful resistance (on mere technical grounds) may deprive the child of much needed help during its formative years," Campbell noted.



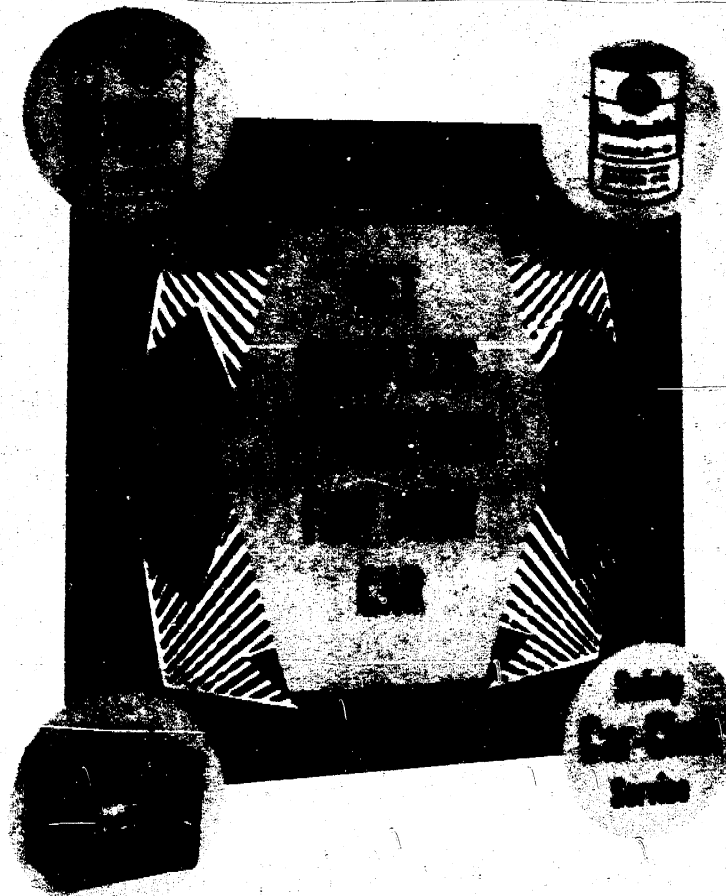
Ross W. Campbell, a practicing attorney who has served for several years as a Referee in the Juvenile Division of Probate Court. He is also a member of the Special Committee on Juvenile Problems of the State Bar of Michigan.

Describing the professional conflict for the attorney handling juvenile clients, he said "The attorney may feel it his duty to counsel his client not to contest a petition" on technical grounds, where the child would benefit from treatment offered by the juvenile court. But if the client insists on doing so, "the attorney may then properly elect to do so with all vigor, or to ask to withdraw from the case, as his conscience may require."

Although legal rights are more important than the right to social counseling in courts of law, Campbell said, lawyers traditionally furnish protection for both. "All that is new is that in the juvenile court the lawyer becomes more immediately aware of the effect of such counsel upon the life of his client."

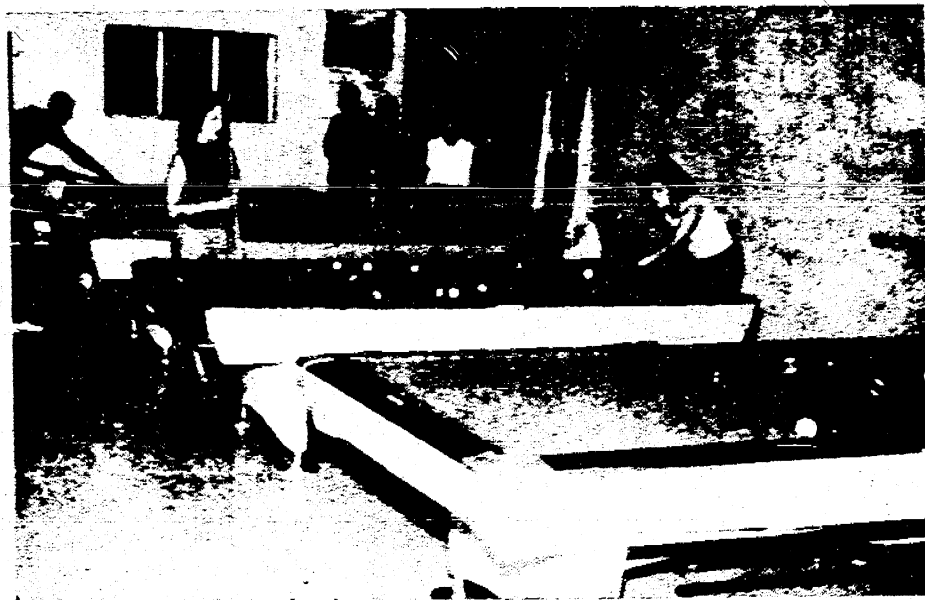
MANCHESTER FAIR BOARD REPORT

RECEIPTS:	
Balance on hand Jan. 1, 1965	1354.97
State refunds	249.07
Gate	1627.73
Rides	2873.63
Concessions	165.00
Senior Class	95.00
Space rental	411.22
'63 Fair Book	24.82
'64 Fair Book	7.50
'65 Fair Book	850.00
Total Income	\$6303.97
EXPENSES	
Lamb Club	87.00
Queen contest	67.26
Rides	2228.65
Fireworks	425.00
Ribbons & Tags	145.00
Advertisement	189.50
Judge Fees	30.40
Entertainment	265.50
Telephone	17.33
Tents	1005.00
Printing & Postage	568.46
Supplies	126.50
Premiums	413.75
Gate prize & bonds	166.03
Labor	563.33
Total Expenses	\$6298.71
Balance on hand November 1, 1965	\$1248.71



Grossman-Huber Service
 DEALERS IN GULF PRODUCTS
 MINOR ENGINE TUNE-UPS • TIRES • BATTERIES
 Manchester • Garden 8-4211

Looking for Recreation?



Try Our Billiard Room
CHELSEA LANES

"A Good Place To Make Friends"
 Phone 475-8141 1180 M-52, Chelsea

MANCHESTER JAYCEE'S TURKEY SHOOT SUNDAY
 SUNDAY NOVEMBER 14
 1 P.M. TO 5 P.M.
 SCHAFFER AIRPORT
 3 Shots Donation \$1.00

LAST DAY OF REGISTRATION SCHOOL ELECTION

NOTICE OF LAST DAY OF REGISTRATION OF THE QUALIFIED ELECTORS OF MANCHESTER PUBLIC SCHOOL DISTRICT WASHTENAW AND JACKSON COUNTIES, MICHIGAN

TO THE QUALIFIED ELECTORS OF SAID SCHOOL DISTRICT:

Please Take Notice that the Board of Education of Manchester Public School District, Washtenaw and Jackson Counties, Michigan, has called a special election to be held in said School District on Thursday, December 16, 1965.

Section 532 of the School Code of 1955 provides as follows:

"The inspectors of election at any annual or special election shall not receive the vote of any person residing in a registration school district whose name is not registered as an elector in the city or township in which he resides"

THE LAST DAY ON WHICH PERSONS MAY REGISTER WITH THE APPROPRIATE CITY OR TOWNSHIP CLERKS, IN ORDER TO BE ELIGIBLE TO VOTE AT THE ANNUAL ELECTION CALLED TO BE HELD ON THURSDAY, DECEMBER 16, 1965, IS TUESDAY, NOVEMBER 16, 1965. PERSONS REGISTERING AFTER 5:00 O'CLOCK, P.M., EASTERN TIME, ON THE SAID TUESDAY, NOVEMBER 16, 1965, ARE NOT ELIGIBLE TO VOTE AT SAID SPECIAL SCHOOL ELECTION.

Under the provisions of the School Code of 1955, registrations will not be taken by school officials and only persons who have registered as general electors with the city or township clerk of the city or township in which they reside are registered school electors. Persons planning to register with the respective clerks must ascertain the days and hours on which the clerks' offices are open for registration.

This notice is given by order of the Board of Education of Manchester Public School District, Washtenaw and Jackson Counties, Michigan.

Laurin F. Leeson
 Secretary, Board of Education

LEGAL NOTICE

ORDER OF PUBLICATION
 GENERAL
 STATE OF MICHIGAN
 No. 50523

Probate Court for the County of Washtenaw.
 Estate of Leo P. Madden, Deceased.
 It is Ordered that on November 17, 1965, at 9:30 A.M., in the Probate Courtroom Ann Arbor, Michigan a hearing be held on the petition of Miss D. Gohmert for appointment as administrator, and for a determination of heirs.

Publication and service shall be made as provided by Statute and Court Rule.
 Dated: October 19, 1965.
 JOHN W. CONLIN
 Judge of Probate
 James C. Hendley
 Attorney for Estate
 117 E. Huron St.
 Ann Arbor, Michigan. O24,28,N4

LEGAL NOTICE

ORDER OF PUBLICATION
 GENERAL
 STATE OF MICHIGAN
 No. 50523

Probate Court for the County of Washtenaw.
 Estate of Henry W. Kemmer, a/k/a Henry Kemmer, Deceased.
 It is Ordered that on December 29, 1965, at 9:30 A.M., in the Probate Courtroom Ann Arbor, Michigan a hearing be held at which all creditors of said deceased are required to prove their claims. Creditors must file sworn claims with the court and serve a copy on Clarence Schlicht, 10332 Chelsea Road, Manchester, Michigan, prior to said hearing.

Publication and service shall be made as provided by Statute and Court Rule.
 Dated: October 21, 1965.
 JOHN W. CONLIN
 Judge of Probate
 James C. Hendley
 Attorney for Estate
 Manchester, Michigan. O28,N4,11

LEGAL NOTICE

ORDER OF PUBLICATION
 GENERAL
 STATE OF MICHIGAN
 No. 50472

Probate Court for the County of Washtenaw.
 Estate of Arthur H. Strahle, Deceased.
 It is Ordered that on December 29, 1965, at 9:30 A.M., in the Probate Courtroom Ann Arbor, Michigan a hearing be held at which all creditors of said deceased are required to prove their claims. Creditors must file sworn claims with the court and serve a copy on Bertha A. Strahle, 517 Below Road, R.F.D. 1, Grass Lake, Michigan, prior to said hearing.

Publication and service shall be made as provided by Statute and Court Rule.
 Dated: October 22, 1965.
 JOHN W. CONLIN
 Judge of Probate
 James C. Hendley
 Attorney for Estate
 Manchester, Michigan O28,N4,11

CARD OF THANKS

We wish to extend our heartfelt thanks and appreciation for the acts of kindness, messages of sympathy and beautiful floral offerings received from our relatives, friends and neighbors during our recent bereavement.
 Mrs. Hazen Leach,
 Mr. & Mrs. Maynard Leach & family
 Mr. & Mrs. Harold McDonald
 Mr. & Mrs. Wilbert Breitenwischer

CARD OF THANKS

We wish to thank all of our Manchester friends who were able to attend our 60th wedding anniversary. We, also wish to thank you all for the many lovely cards, which were appreciated.
 Frank & Eva Rawson

CARD OF THANKS

I wish to thank my relatives, friends, and neighbors for the lovely flowers, cards and many acts of kindness shown me during my stay in the hospital and since my return home. Special thanks to Rev. Menzel for his visits and prayers.
 Mrs. Anna Hasenpflug

Steeple on the new church of the Sala Air Base near Stavanger, Norway, is simply made from the wing of an F-84 jet fighter.

YOUR HOME TRADE DOLLAR BUILDS A BETTER COMMUNITY

ESTATE AUCTION

FURNITURE, TOOLS, ANTIQUES AND AUTOMOBILE TO SETTLE THE ESTATE OF THE
 Late Gus Franzen
 Follow Directions Carefully
 6 miles South and East of Brooklyn, Michigan on M-124 to Wampler's Lake Dance Hall. Turn left on Wellwood Rd. Stay on Gravel after 1 mile to Mulvaney Rd. 3rd House left or West of Manchester or East of Napoleon on M-11 to Sharon Hollow Rd. South to Hermon Rd. to Watkins Rd. and South to Mulvaney Rd. to House No. 11852

Sat. Nov. 6 12:00 Noon

A Complete Household of Furniture Inc. 4 Space Heaters, Folding Wheel Chair. All the Major Appliances, Antiques, Lots of Tools, 2 Power Saws, 1955 Dodge 4 door with 45,000 Miles.

Take a little time and find us!
 TERMS: Cash James C. Hendley Adm.
 John Hendricks Auctioneers H. Martin
 Jay Fisher E. Hanked Clerks

FOR SALE

Generators for most cars. Used \$5.00 and up. Rebuilt ones \$9.00 and up

Batteries
 Used \$4.00 Rebuilt \$6.00

New Springs
 For most cars - also used

Pumps
 Fuel pumps and water pumps used rebuilt late model

Mufflers
 New \$6.95 Used \$3.00

We buy junk-wrecked cars
 We also stock 1 Beams, channels, angles, PLATES.

MANCHESTER AUTO PARTS

West Austin Rd., Manchester
 Phone GA8-5171

FOR SALE: 1960 Plymouth Ex Police good rubber & body \$400, Saturday only 11285 Pleasant Lake Road, Brooks. 10-28/11-4

FOR SALE: Aluminum combination door 3' x 6' x 8" like new \$25. Phone GA8-8149 or after 5:30 p.m. call GA8-8507.

OPEN HOUSE

SHOWING
 2 NEW HOMES
 ON
Schaffer Court
 SUNDAY, NOVEMBER 7
 2 to 4 p.m.

For further information
 Call Joyce Ditz
 429-4234
 W.H. GROSS - Broker
 429-9572

LAND AUCTION

On Thursday November 18, 1965 at 2:00 p.m. in the conference and testing room in the basement of the new Ann Arbor City Hall, corner of Fifth and Huron in Ann Arbor, the Michigan State Highway Department will sell at public auction to the highest bidder the following described lands:

GENERAL DESCRIPTION

A landlocked rectangular shaped parcel of vacant land in Manchester Township, Washtenaw County. The property lies West of M-52, approximately 5 miles South of Manchester, south of Kirk Road and North of Bowen Road. The property is bounded on the Northwest and south by lands owned by Jerry Palaky, Otto Trinkle, Joseph Grossman, Albert Schiel, Aaron Breitenwischer, and Homer Walters, and contains 77 acres, more or less.
 There will be no right of direct ingress to or egress from the lands herein described from or to Highway M-52.
 SALE 8-139-A

Item No. 9 November 18, 1965 Control 81013
 Minimum Bid \$2,600.00 Parcels C12,C13 & C14
 Bid deposit \$260.00

MINIMUM BID - The Minimum Bid, as stated, is the minimum sale price. NO SALE can be made for less than the minimum bid indicated.

BID DEPOSIT - The Bid Deposit will remain the same as stated regardless of selling price. Bid Deposits must be in the form of cash, certified check, cashier's check, or money order, payable to the State of Michigan - Highway Department. (PERSON OR COMPANY CHECKS ARE NOT ACCEPTABLE.) Bid Deposits must be made by the successful bidder at time of the sale.

For further information contact Mr. Norman Fulger, Michigan State Hwy. Dept., 2900 Clinton Rd. Jackson, Michigan Phone ST4E 47172.

WANTED AT ONCE - Dealer for

Rawleigh business in Manchester & Saline & Milan. Real opportunity for good worker. Experience helpful but not necessary. Write Rawleigh Dept. Mc K 754 234 Freeport, Illinois 11-4-18

FOR SALE: 1960 Ford tudor v-8-stick. Phone GA8-8567. 10-11/4

FOR SALE: Willis Jeep truck 1948 model--3/4 ton, good condition. Tony Jurecki, 7612 Lamb Road, Manchester. 11/4

FOR SALE: 1959 Mercury. Mike Keezer, Phone 428-8187

RESTAURANT HELP: Wanted waitresses, bartender, cooks and cook's assistants. Full or part time. Phone CR9-4211 for appointment. Schumm's, Chelsea. 9/23 fn

WANTED: STANDING TIMBER any kind. Move mill into woods and saw on your farm. Call Lynn W. Kern, Phone 475-8563 Chelsea 9/16 fn

K MART

DISCOUNT DEPARTMENT STORE

NOW ACCEPTING APPLICATIONS FOR -

BOOKKEEPER, OFFICE CASHIERS
 DEPT. HEADS, MERCHANDISERS
 SNACK BAR WAITRESSES
 STOCK MEN
 MAINTENANCE MEN

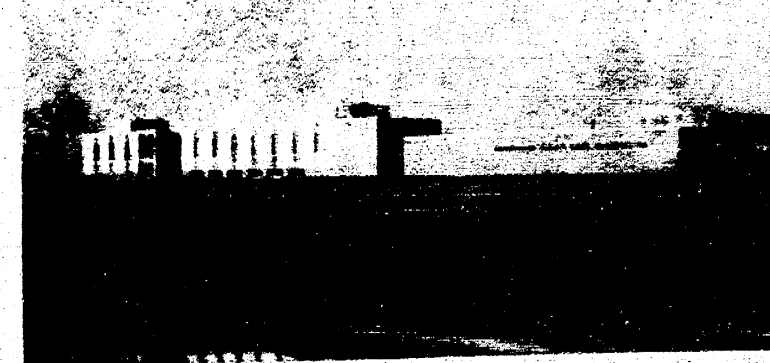
FULL OR PART TIME
 Apply in person to

Mrs. Al Hogarth

9:30 a.m. - 12 noon Monday thru Friday
 1:00 - 4:00 p.m.

K MART

255 N. Maple Rd.
 Ann Arbor, Michigan



WASHTENAW COUNTY ROAD CENTER COMPLETED

Washtenaw County Road Commission's new central headquarters are completed and will be open to the public Sunday, Nov. 7 for citizens of Washtenaw County. The open house will be held from 1:30 to 5 p.m. with dedication ceremonies scheduled at 2:30 p.m.

On Thursday, Nov. 11, from 10 a.m. to 4 p.m., the new center will be open for visiting road commissions, highway officials and industry suppliers, according to Howard G. Minier, engineer-director.

Washtenaw's new central road headquarters is located at 555 Zeeb Road, just north of I-94. The complex consists of three buildings placed to form a large block "C", with the main administration offices and engineering department housed in a two-story brick and block building 169 x 33 feet fronting on Zeeb Road and set back about 325 feet from the roadway.

Largest structure is the 300 by 90 foot steel framed storage garage which forms the northern leg of the "C" and houses equipment for maintaining highways in the Ann Arbor District, and provides storage for other Commission.

This building construction was financed by borrowing \$500,000 to be paid back over a period of five years. The Commission plans to be fully operating at this location by December 1, 1965.

Architect fees, necessary special equipment purchased and installed, construction of driveways and parking lots, landscaping, and new furniture will cost about

\$115,000 and will be paid out of the Commission's 1965 operating costs. The site is located three miles north of the exact center of Washtenaw County. The commission owns a total of 70 acres at this location. The flag pole was moved from the Commission's Main Street yard to this new location.

The Administration and Engineering building is heated and cooled with two units mounted on the roof.

The move from downtown Ann Arbor to this location will permit the Commission to give better service on the 1600 miles of roads and streets that they maintain; and with the opening of the M14 ByPass will relieve the streets of Ann Arbor of Commission equipment traffic.

Between 50 and 100 Commission employees will be working at this location.

The Board of Supervisors authorized the Washtenaw County Road Commission to borrow \$500,000 in March 1964.

Bids were taken in July, 1964 for \$500,000 of revenue bonds. Low bid—\$200,000 @ 2.65% \$300,000 @ 2.75%. Interest to be payable February 1 and August 1st. Repayment \$100,000 a year for 5 years. Due August 1 each year.

Colvin, Robinson and Wright and Associates were engaged as the architects. Plans were completed in September 1964. Bids for construction were taken on Oct. 16, 1964. There were 5 bidders on the general contract and they ranged from \$323,000 to \$358,700.

The award was made to the E. Kutz Construction Company of Ann Arbor and the General Contract and the mechanical and electrical trade subcontractors for the low combined bid of \$462,159.60.

This building construction was financed by borrowing \$500,000 to be paid back over a period of five years. The Commission plans to be fully operating at this location by December 1, 1965.

Architect fees, necessary special equipment purchased and installed, construction of driveways and parking lots, landscaping, and new furniture will cost about

CONTINUED FROM PAGE ONE * MAIN STREET

So congratulations are in order to our congenial co-worker--his is an anniversary cake with a single candle!

It is just as well that we mention Harry's anniversary in this issue because after we tell you about this funny little incident that happened to our good publisher--there may well never be another Main Street. But this is just too good to keep (and by the time the publisher gets to read it, it will be in print). So you can see what a chance we have to take--all in the interest of the public!

Publisher George is often in the dog house. This is a well established fact. Not a living soul would dare deny it, least of all George. But what we didn't know until the other day was that he has been in the dog house so much lately that--well, this is the story! Seems that his wife had made one of her quite famous stews! The aroma wafted down the stairs to the office. It smelled good. George was working late. Hungry as he was he didn't leave his post for dinner. The rest of the family ate. It might be well to mention here that the Koda's have a brand new little pup. It is cute as can be and is treated like a king. Seems that Andrea decided to give the pet some stew, mixed with some dog food. She wanted to see if the dog liked it. We are told that these fancy pedigreed dogs eat what they want and then the food is removed at once. Andrea gave the dog a chance to eat the stew-dog food mixture. Then she placed the bowl on the kitchen counter and went down stairs. Dad hustled up stairs for something. He spied the bowl of stew on said counter. Thought someone had placed it there for him--to cool. His one weakness is stew. He stopped just long enough to eat it. He returned to his work in the office. Andrea bounded down the stairs and that little gal was plenty excited. She demanded to know if someone ate the dog food? George insists it tasted good. That's what happens when you are in the dog house too long!

PROBLEM

Bills were approved as follows:

- Leslie Landwehr \$189.00
- Michigan Bell 69.36
- Tibb Chev. 17.60
- Ken Beckaw 14.00
- Mich. Hospital Service 78.32
- Traffic House Inc. 23.85
- Bel Air Leasing 317.00
- E. L. Huber Distributing 7.68
- Jaycees 5.50
- L. V. Kirk 6.88
- Mich. Bell Telephone 12.33

ALL VETERANS INVITED

All veterans and their families are invited to a potluck dinner at the American Legion Club next Thursday, Nov. 11 at 6:30 p.m. Turkey and ham will be furnished. Members are asked to bring dishes to pass and their table service.

ALL NON MEMBERS VETERANS ARE INVITED

INJURES KNEE IN FALL

Mrs. William Pierce fell on the sidewalk in Manchester on Ann Arbor Street Sunday evening and broke her knee cap. She was taken to Tecumseh Hospital for x-rays and reportedly was expected to have it put in a cast Tuesday.

COMMUNITY CHEST DRIVE OVER THE TOP

In keeping with tradition, the Manchester United Community Fund and Red Cross Drive has again gone over the top. The goal was \$11,444, and the present total for this year is \$15,958, or 139 per cent. A portion of this money, of course is earmarked for other Community Chests in the area and there are also a few solicitors who have not yet finished their calls.

A final report will be given next week at the

MANCHESTER RED CROSS VOLUNTEERS HAVE A BUSY YEAR

American Red Cross volunteers in the Manchester area have had one of the busiest years since the early 1950's.

Monday, November 8, twenty-two women from the local group manned a Bloodmobile Clinic from 9:00 a.m. to 3:00 p.m. at the Ford Motor Company in Rawsonville. A plant clinic is twice as busy as a local one--this one processed over 250 donors and credited 173 pints of blood to the Ford Bloodmobile Clinic in the six hour period that all Bloodmobile Clinics operate.

Mrs. Rolland Grossman was chairman of the day. Registered nurses from the area were Mrs. Willard Mann, Mrs. Theodore Tapping, Mrs. Laurel Breitenwischer and Mrs. James Kress. Staff Aides included Mrs. Finn Olsen, Mrs. Allen Schaffer, Mrs. Henry Eames, Mrs. Tom Walton, Mrs. Arthur Blanchard, and Mrs. Norman MacLeod.

Nurses aids were Mrs. James Pratt, Mrs. Ralph England, Mrs. Earl Koebbe, Mrs. Eugene Bentschneider, Miss Edna Dietle, Mrs. Norman Fielder, Mrs. Fred Leeman and Mrs. Ronald Jenter. Canteen workers were Mrs. LeRoy Marx, Mrs. Earl Alber and Mrs. Basil Schwab.

SCHOOL REGISTRATION

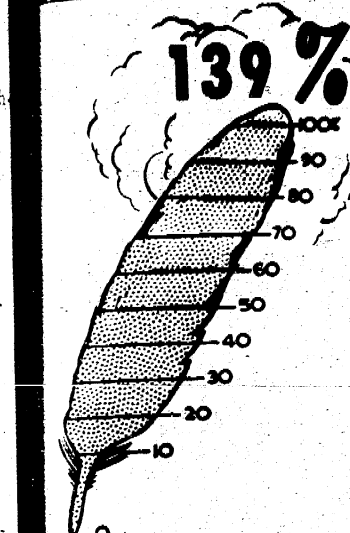
Registration deadline for the special school election is Tuesday November 16 at 5 p.m. The election will take place December 16.

Registrations will not be taken by school officials and only persons who have registered with the township clerk of the township in which they reside are eligible to vote.

Washtenaw and Jackson Counties are included in this area according to Laurin Leeson, secretary of the School Board.

THE MANCHESTER ENTERPRISE

Manchester Library P.O. Manchester Complimentary Year No. 45 Independent in all things. Devoted to County and Home News. November 11, 1965 10 Cents



COMMUNITY CHEST DRIVE OVER THE TOP

In keeping with tradition, the Manchester United Community Fund and Red Cross Drive has again gone over the top. The goal was \$11,444, and the present total for this year is \$15,958, or 139 per cent. A portion of this money, of course is earmarked for other Community Chests in the area and there are also a few solicitors who have not yet finished their calls.

A final report will be given next week at the

COUNCIL NOTES

November 1, 1965

Council met in regular session called to order by President Bentz. Trustees present were McGuire, Koebbe, Althouse and Avery. Absent Clark and Dorff. Minutes of the previous meeting were read and approved.

Bills were presented from the paper funds. Moved by McGuire and supported by Lowery that bills be paid as read. Holding check # 3056 for investigation of charges. All years, carried.

Moved by Lowery and supported by McGuire that alteration permit be granted Ernest Streiter. All years, carried.

Moved by Lowery and supported by McGuire that new building permit be granted Harold Osborne. All years, carried.

Moved by McGuire and supported by Althouse we do adjourn. Carried.

Wyle A. Widmayer, Clerk

CHRISTMAS CLUB CHECKS MAILED

Dan J. Boutell, Vice President and Cashier of the Union Savings Bank of Manchester, reports that Christmas Club checks totaling \$53,000, were mailed November 8 to the 450 members of the 1964-65 Christmas Club.

If the national averages are followed in Manchester, the money will be spent in the following manner:

Christmas Savings	24.8%
Year End Bills	30.4%
Insurance premiums	5.6%
Taxes	10.3%
Mortgage payments	9.5%
Education	6.7%
Household Furnishings	2.6%
Miscellaneous	6.5%
	3.6%
	100%

The 1965-66 Christmas Club opens officially November 15th, but Mr. Boutell stated the bank would be happy to open your account before that date if desired. Weekly payments amounting to annual savings are as follows:

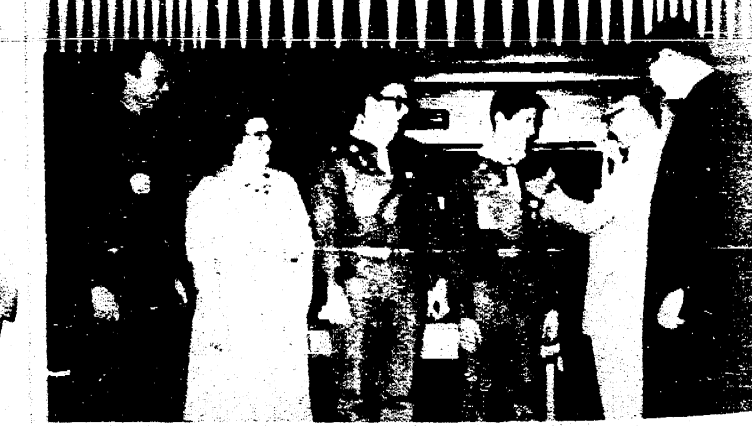
Weekly	Annual Savings
\$.25	\$ 12.50
.50	25.00
1.00	50.00
2.00	100.00
3.00	150.00
5.00	500.00

MARRIAGE FOR THE DOGS

John Felstead, 74, and Lizzie Smith, 65, called off their wedding plans in Coates, England, because their dogs didn't like each other.

GOD and COUNTRY AWARD given to Scouts

The Thanksgiving Season is coming up soon, too, when the Jaycees stage their annual Turkey Shoot. This is an event of next Sunday starting at 1:00 p.m. at the Schaffer Airport. The money made in this project helps with the many projects which the club sponsors.



GOD and COUNTRY AWARD given to Scouts. (l to r) Scoutmaster Robert Armentout, Mrs. Armentout, Tim and Ted Armentout, Rev. Jesse Epps and Rev. Oscar Cooper. The Armentout boys received the God and Country Award during the worship service Sunday at the Manchester Methodist Church. The presentation was the culmination of three years of training under the guidance of Rev. Jesse Epps, Armentout pastor of the church. The Rev. Epps came here from his summer home at Lake Louise to make the presentations. Their residence is in Clearwater, Florida. Assisting him was the Rev. Wm. Cooper, pastor of the church.

Tim and Ted Armentout are members of Troop 426 of Manchester. The Troop with Assistant Scoutmaster Ron McNally and Scoutmaster Robert Armentout participated in the service. This was the first God and Country Award ever to be presented at the Manchester Methodist Church.



The Manchester High School Senior Government class visited with Senator Gil Bursley (R) Ann Arbor, front row left, during their annual Legislative day in the legislative process in the Michigan State Senate, and toured the Chambers of Legislation on Thursday. The group photo was taken prior to their tour of the Capitol building. The group, accompanied by Cliff Elliott, Government State Capitol at Lansing. The group, accompanied by Cliff Elliott, Government Instructor, front row right, and Phil Mains, counselor, third row right, heard the

NEW 2 & 30 HONDA TRACTORS

Top work capacity at any speed with Hydra-static Drive

NO CLUTCHING
NO SHIFTING
NO BELT or PULLEYS to adjust

K & W SUPPLY FARM
Phone: GA8-5081 Manchester
YOUR CASE SALES AND SERVICE DEALER