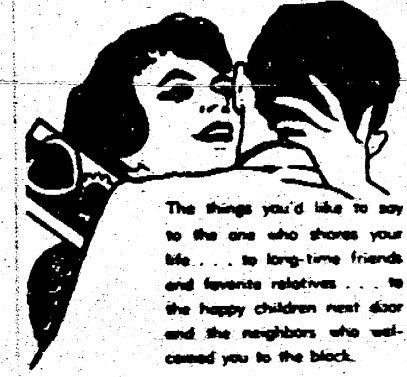


VALENTINES



Bureh's MANCHESTER DRUG

AUCTION

Having decided to quit farming, I will sell the following described articles at the farm located 9 miles north and 3/4 mile east of Manchester, Mich. or 1 mile south of Chelsea, Mich. on M-52 to Jerusalem Road then 3/4 mile east to 14550 Jerusalem Road on

Saturday, February 6th 1:00 P.M.

25 Registered & Grade Holsteins

25 Head of registered and grade Holstein cattle. This is a productive young herd ranging in age from 2-5 years. Most cows and all heifers are vaccinated for Bangs. All are T.B. tested, all have been raised on the farm and are sired by a top registered bull. Owner-sampler records will be given day of sale. Last years herd average was over 13,000 lbs.

8 cows are fresh or close up springers, balance will freshen in base time. 7 yearling heifers - open 1 six month old heifer

ALL BRED BACK TO MABC SIRE

FARM MACHINERY

- John Deere 730 Diesel tractor in excellent condition
John Deere A Tractor A-1 cond.
John Deere heavy duty 3-16" plow new in '63
John Deere No. 25 combine A-1 condition
John Deere No. 226 2 row corn picker
John Deere No. 290 corn planter
John Deere mower P.T.O.
Co-op cultipacker
Papec field chopper
2-4 ton wagons w/ grain boxes, like new
Silage wagon
2 bunker wagons
2 false end gates w/ speed reducer
Oliver 9" wheel disc, 2 Yrs. old
12' springtooth drag
8' springtooth drag
Spike tooth drag

Hay and Grain

- Appx. 2,000 bales alfalfa hay
" 2,000 bales straw
" 600 bu. oats
" 18' corn and sorghum silage in 16' silo

Terms: Contact Floyd Kehrl, National Bank of Detroit, Plymouth, Mich.

ERWIN WALKER, Owner LINEHAN & LINEHAN AUCTIONEERS F. KEHRL, CASHIER

Not Responsible For Accidents Day Of Sale

SHERIFF'S RECRUITS TO START TRAINING

Nine Sheriff's Department recruits are in training, beginning this week at the County Jail. Sheriff Douglas J. Harvey, who organized the training program, calls it the "most comprehensive ever launched for county officers here."

Instructors for the month-long course will command officers from the Sheriff's Department, Michigan State Police and Ann Arbor Police Department, representatives of the county prosecutor's staff, the two Circuit Court judges and the Ann Arbor Municipal Court judge. Sheriff Harvey said. The recruits will receive instruction on accident investigation, laws of arrest, criminal investigation, court procedure, pistol shooting, self-defense, and handling of juvenile offenders. The sheriff said the nine recruits have passed written qualification tests and have had their personal background investigated.

The sheriff said the nine recruits have passed written qualification tests and have had their personal background investigated.

CATHOLIC SOCIAL SERVICES TO MEET FEBRUARY 10

The sixth annual dinner of the Catholic Social Services of Washtenaw county will accentuate thought on a timely topic. "Poverty," Sister Mary Emily, IHM, president of Marygrove College, will speak at "Psychology of Poverty" at the Michigan Union Ballroom on February 10 at 6:30 p.m.

An outstanding figure in the field of education, Sister Mary Emily's interests range from the involvement in the Sister Formation Conference, an organization dedicated to raising the standards of teaching nuns, to an intense interest in social problems and their implementation.

A native of Detroit, a graduate of Marygrove College and St. Louis University, she has consistently contributed to Catholic and educational literature and is chairman of the Catholic Liberal Arts College Presidents of Michigan.

For further information call Nina M. Greening in Chelsea or Mrs. Leo Hoey in Dexter.

COMING EVENT

The annual variety show sponsored by the Band Boosters will be at 8:00 p.m. Friday, Feb. 5 at which time the band boosters will be selling their special home made candy. There will be local talent on the program.

The next meeting will be Wednesday, Feb. 24 at the home of Mrs. Duane Haselschwerdt.

LOCAL TREATMENT PLANT OPERATOR TAKES TRAINING

Otto Webster of Manchester who operates the Water Treatment Plant for the village was one of those who attended a five-day laboratory training course for waste-water treatment plant operators at the W. K. Kellogg Biological Station at Gull Lake, near Battle Creek.

The course is sponsored and conducted by the Michigan Department of Health, in cooperation with Michigan State University and the United States Public Health Service.

Webster is one of a group of twenty sewage treatment plant operators enrolled in the course for the purpose of increasing knowledge in laboratory methods necessary for the operation and control of sewage plants. It will also help them maintain accurate records from which future treatment needs can be predicted and necessary steps taken to prevent water pollution.

A total of eighty operators will take part in the series of courses.

BEACON LIGHT EXTENSION NEWS

Ten members and one guest were at the home of Mrs. Walter Haas for the January meeting of the Beacon Light Extension.

Mrs. Floyd Parr conducted the business meeting. The lesson was on traffic rules and regulations, and was presented by Mrs. Allen Alber and Mrs. Lawrence Kraus. Upon completion of the lesson a "Yes and No Test" based on what every driver must know was given. The group found this to be very interesting and instructive.

The next meeting will be Wednesday, Feb. 24 at the home of Mrs. Duane Haselschwerdt.

STRIKES 'N SPARES

MANCHESTER TOWN CLUB FEB. 1 BOWLING NEWS

Table with bowling scores: Team Won Lost, Sportsman Club 57 23, Speedway 46.5 33, S & W Builders 47 33, Tom Marshall, Inc. 43.5 36.5, Grossman-Huber 40.5 39.5, Uphaus Drug 38.5 43, Laundromat 37 44, Ready Mix 33 47, Kuehmann's Farm 31 49, Seller's Saw Mill 25 55.

MANCHESTER WOMEN BOWLING LEAGUE

Table with bowling scores: Team Won Lost, Schaffer Lumber 55.5 26.5, Suttons 54 26, Gills 41 39, Bakery 39 41, Grossman-Huber 35 45, Lannons 35 45, Union Construction 30.5 48.5, Smith Barber Shop 27 55.

MANCHESTER WOMEN BOWLING LEAGUE

Table with bowling scores: Team Won Lost, Schaffer Lumber 55.5 26.5, Suttons 54 26, Gills 41 39, Bakery 39 41, Grossman-Huber 35 45, Lannons 35 45, Union Construction 30.5 48.5, Smith Barber Shop 27 55.

SUBSCRIPTIONS RATES

Table with subscription rates: In Michigan, One Year \$3.00, Six Months \$1.75, Single Copies .10c. Outside Michigan, One Year \$3.50, Six Months \$2.25, Single Copies .10c.

ADVERTISING RATES

Table with advertising rates: Classified, 3¢ a word (minimum 40¢), Display (upon request).

CENTURY CLUB TRIBUTE TO AMIN FRANKLIN

Twentieth Century Club the home of Mrs. Chester Tuesday evening, Jan. 26. The club was answered by each giving a quote of Benjamin Franklin.

Stanton Roesch gave an interesting report on the County Association of Women's Clubs she had attended in Ypsilanti.

This group gives support to a group, located in Belleville was decided by the members of the Twentieth Century to them in this cause.

Tom Walton, Mrs. Leo and Mrs. Dan Boutell were asked to determine how the could best help the Manchester Township Library.

Following the business meeting, Ray Trol and Mrs. Pratt provided an interesting including a discussion of Amin Franklin, whose birthday is January 17.

Refreshments were served by Scully and Mrs. Koceski.

APPLICATION FOR FARM FEED GRAIN BASES

New farm feed grain base may be established under the 1965 Grain Program for farms which did not plant feed grain in and/or 1960 that meet eligibility requirements, Mrs. J. J. of the County ASCS Office announced.

to be eligible for a new farm grain base, Mrs. Stump said operator must expect to receive 50 percent or more of his livelihood in the current year from the production of agricultural commodities on the farm, must have had at least two years experience in production of feed grains in the last five years. Interested producers who can meet these requirements should contact the county ASCS office no later than March 1 and file application, Mrs. Stump said.

A farm for which a new farm grain base is established will not be eligible to participate in the 1965 program. However, producers may qualify for price support loans and purchases by planting within their feed grain base and maintaining the conserving base.

WORKING EVENT

At 8:00 p.m. Tuesday, Feb. 2, the Neighboring Farm Bureau will meet at the Bridgewater Town Hall with the Lewis Blaisdells the 1st.

ANSWER TO PUZZLE



THE MANCHESTER ENTERPRISE

Established in 1867 George Koda - Publisher Lois Koda - EDITOR

Published on Thursday at Manchester, Mich. had entered as second class matter at the post office at Manchester, Michigan, under the act of March 8, 1879.

Subscriptions Rates In Michigan, One Year \$3.00, Six Months \$1.75, Single Copies .10c. Outside Michigan, One Year \$3.50, Six Months \$2.25, Single Copies .10c.

Advertising Rates Classified, 3¢ a word (minimum 40¢), Display (upon request).

BILLY GRAHAM'S FILM TO BE SHOWN HERE

Evangelist Billy Graham's motion picture "The Heart is a Rebel" will be a forthcoming significant event in the religious life of Manchester. The new feature-length color production stars Ethel Waters, Georgia Lee and John Milford and is scheduled for its local showing at the Manchester Methodist Church Feb. 16 at 7:30 p.m.

The story is based on a conflict in the life of a modern young couple when the husband, an advertising executive, can't find a place in his scheme of things for his wife's sudden acceptance of the Christian faith. In a completely "down-to-earth" setting the situation provides a dimension of reality seldom afforded a religious motion picture.

Ethel Waters adds a luster to her long career in the role of the practical nurse who exerts a profound influence on the young couple through her day-by-day faith in God. A film highlight is Miss Water's inspiring rendition of "His eye is on the Sparrow" and a spiritual "Motherless Child". Georgia Lee and John Milford give striking portrayals as the young married couple.

Miss Lee's previous performance in "Oiltown, U.S.A.", "The Crescent and the Cross", "The Flame" as well as her recent entry into the sacred recording field, have endeared her to audiences around the world.

Jane Withers makes a rare guest appearance in the role of a sales girl in a large toy store. One of the foremost child stars of yesterday, Miss Withers has taken time from a domestic life and an active role with the Hollywood Christian Group.

"The Heart is a Rebel" provides a "front row" perspective of the Graham Team in the Crusade setting of Madison Square Garden, New York City. The dynamic preaching of the evangelist is augmented by the singing of George Beverly Shea and the music of a 1500-voice Crusade Choir under the direction of Cliff Barrows.

This World Wide Pictures production joins a long list of previous dramatic successes coming in the tradition of "Souls In Conflict", etc.

DOLLAR and SENSE FARMING.

BOOST EARLY CROP GROWTH by having nitrogen available in a form easily absorbed by the plant and within the early rooting area. Early spring soil temperatures are usually too cold to release adequate amounts of soil nitrogen already there for growth during this period.

THROW UREA ON ICY WALKS, ramps and driveways instead of rock salt. Urea is more expensive but it won't corrode metal like liquefied rock salt. In livestock areas, much of its value will be saved since it will mix with manure for field spreading. To improve traction mix 2 1/2 to 3 pounds area with 100 pounds of sharp sand and spread 50 pounds per 1,000 square feet.

BREED DAIRY COWS 60 to 90 days after calving. Conception rates are highest between two and three months after calving. It takes that long for a cow's reproductive tract to return to normal. But delaying breeding longer than 90 days after calving costs the dairyman \$1.25 per day in reduced milk production. A longer calving interval may also interfere with culling and making replacements.

BUY MACHINERY NOW. It might pay, even if its a combine you won't need until summer. Many large manufacturers offer winter specials on large items such as tractors and combines that can save you several hundred dollars. Also, dealers are anxious to reduce inventory.

Hayden Flour Mills, Inc. TUCUMSEH, MICH.

HOMEOWNERS • COMPLETE COMMERCIAL PACKAGE • FARMOWNERS

M. FAULHABER 6060 Esch Road, Manchester Phone 428-8518 CALL ANYTIME DAY OR NIGHT RECORDER TAKES MESSAGES Ditching, Basements, Tiling, Bulldozing Artificial Lakes - General Excavating

Legion Auxiliary CARD PARTY Saturday FEBRUARY 6, 1965 8 PM PRIZES and DOOR PRIZE 50c Per Person

NO NEED TO BEEF. ... about bills when disaster strikes your property if you're insured by a Hastings Mutual Homeowners policy. Here's a good steer... let your local Hastings Mutual agent beef-up your insurance protection. He'll be glad to tell you about it. Call him today! SUTTON AGENCY Manchester, Mich.

Child Education Vital To Good Dental Health

LASTING: Children who are taught good dental habits can look forward to a lifetime of healthier teeth. The Michigan State Dental Association says early dental care coupled with good home care not only helps prevent decay but helps to avoid conditions which lead to crooked teeth, faulty bite and other major dental disorders.

The dental association is stressing the importance of child dental health as part of the observance of National Children's Dental Health Week, February 7-13. The Week has been proclaimed nationally by President Johnson and in Michigan by Governor Romney.

The state dental group says that figures released by the American Dental Association show that approximately 50 per cent of all two-year-olds in the nation have one or more decayed teeth and that the Children's Dental Health Week observance is designed to get parents to consider early professional care for their children and to begin home care by teaching children regular and proper dental health habits.

Regular Visits
Dr. Kenneth J. Ryan, of Flint, president of the state dental association, says that regular visits to the



GOV. ROMNEY proclaimed the week of February 7-13 as Children's Dental Health Week in Michigan. Showing Gov. Romney the official poster of the Week during proclamation ceremonies are, left, Myrtha Lynn Travis, 19, and her sister, Lisa Jo, 6, of Detroit. In proclaiming the Week, the Governor called on parents to seek early, preventive care and to educate children as to good home-care habits.

dentist, beginning at age three, help assure that "baby" teeth are shed at the right time and permanent teeth are properly aligned. "If parents show a genuine awareness of good dental habits, this is usually transmitted to children," he added.

the profession and to give public explanation of good dental health. Even so, dental and orthodontic teeth care is treated and often preserved through the winter of colds and flus. Each year, about 100 million children claim an aching number of teeth in Michigan and the nation. But thanks to dental development of new, more effective methods, thousands of teeth are saved each year. High schools must require all football players to wear a mouthguard during the game.

Educate Children

Whenever you look at it, there's no better time than now to start educating your children on sound dental health habits. National statistics reveal that less than 50 per cent of Americans visit their dentist regularly. It's inconceivable that less than half of the population receives regular dental care in a nation that leads the world in dental science.

Michigan dentists hold hopes that children and parents will continue good dental health habits learned during National Children's Dental Health Week.

Personal
Mrs. John Bruestle is improving at her home after being seriously ill with pneumonia.

Significant Strides

Over the past two decades, the dental profession has made significant strides in dental health. The philosophy that teeth can last a lifetime is much closer to reality because of the advances made within

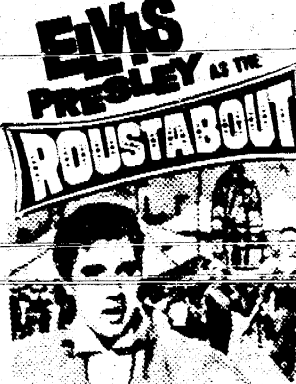
INCOME TAX SERVICE
Marvel C. Troitz
220 So. Washington, Manchester
Call for appointment evenings
Tele: GA 8-8252
April 1965

FOR SALE
Generators for most cars. Used \$5 and up. Rebuilt ones \$9.00 & up.
Batteries
used \$4.00 --rebuilt \$6.00
New Springs
for most cars-also used
Pumps
fuel pumps & water pumps
used -- rebuilt-late model
Mufflers
new \$6.95-used \$3.00
We also buy junk-wrecked cars.
We also stock I Beams, channels, angles, PLATES.
MANCHESTER AUTO PARTS
West Austin Rd., Manchester
Phone GA8-5171

CHELSEA THEATRE
CHELSEA, MICH.

24-HR. PROGRAM
INFORMATION - 475-8212

Now thru Sat. Feb. 6



BARBARA STANWYCK
TECHNICOLOR - TECHNISCOPE

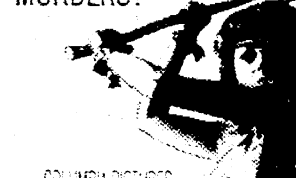
Sun - Mon Feb. 7-8



M-G-M presents MARTIN RANSOFF'S PRODUCTION
JAMES GARNER ANDREW DOUGLAS
THE AMERICANIZATION OF EMILY
A FILMWAYS PICTURE

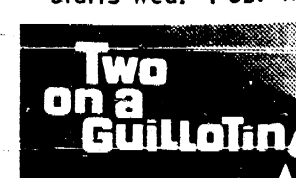
Tue Wed Thur Feb. 9-10-11

WARNING!
'STRAIT JACKET' VIVIDLY
DEPICTS AX
MURDERS!



COLUMBIA PICTURES
presents
STRAIT JACKET
Starring
JOAN CRAWFORD

Starts Wed. Feb. 17th



PANAPLAST presented by WARNER BROS.



Special

only until Feb. 26th

Our \$15 Realistic
Permanent Wave
for only \$12

Hours... 8:30 to 5:30 Monday thru Saturday
Wednesday Evenings till 9:00 P.M.

Jackie (Mock) Johnson - Operator
Dorothy Moore - Owner, Operator

DOROTHY MAE BEAUTY SHOP
215 E. MAIN ST.

Call for your Appointment now

GA 8-5621

CLINTON Theatre
Clinton, Mich.
GOOD MOVIES ARE FUN FOR THE FAMILY!

New Policy STARTING TIME 7:00 P.M.
ALL 3 DAYS

FRIDAY-SATURDAY-SUNDAY, FEBRUARY 5-6-7

ALFRED HITCHCOCK'S
Suspenseful Sex Mystery!..



starring 'TIPPI' HEDREN · SEAN CONNERY

THE SPOT TO STOP
For QUICK STARTS fill up with GULF WINTER MIX GASOLINES
WET WASH . . . \$1.00
REG CAR WASH . . . \$2.00
Grossman-Huber Service
DEALERS IN GULF PRODUCTS
MINOR ENGINE TUNE-UPS • TIRES • BATTERIES
Manchester Garden 8-4211

WET WASH . . . \$1.00
REG CAR WASH . . . \$2.00

Grossman-Huber Service
DEALERS IN GULF PRODUCTS
MINOR ENGINE TUNE-UPS • TIRES • BATTERIES
Manchester Garden 8-4211

You are Invited...
AMERICAN LEGION AUXILIARY
CARD PARTY
Saturday
FEBRUARY 6, 1965
8 PM
PRIZES DOOR PRIZE PRIZES

PUBLICITY HEAD NAMED FOR MICHIGAN WEEK

Donald A. Morris, Manager of Special Services at the University of Michigan, has been named director of publicity for the Washtenaw County Michigan Week Observance May 16-22. The announcement was made by Albert J. Samborn, Washtenaw County Michigan Week Chairman.

Morris, former education writer for the Detroit Times, has served on the Detroit State University Relations staff prior to coming to the University of Michigan in 1962. Mr. Morris was managing editor of the University of Michigan News Service until last April when he became manager of the special programs.

As Publicity Chairman for the County Michigan Week Observance Morris will serve on the County Michigan Week Coordinating Council, helping in planning for the annual event. He will also aid community publicity chairman in the task of detailing the role their community plays in the "Story of Michigan".

ATTENDS RETREAT

Rev. Jesse Epps left Tuesday to attend the Retreat for Ministers of the Ann Arbor District at the Pokagon State Park, Angola, Ind. at the Potawatomi Inn.

Rev. Epps and Rev. Edwin Weiss of Chelsea returned home late Wednesday afternoon.

COMING EVENT

A pancake supper is planned by the Youth Fellowship of the Methodist Church for Wednesday, February 17.

POSTPONE DATE

The Father-Son Banquet of the Methodist Church church has been postponed until sometime in March.

OPEN BLOOD CLINIC

An Open Blood Clinic will be held at the American Red Cross Operations Center, 2729 Packard Road, Ann Arbor, from 2 to 7:30 p.m. Friday, Feb. 12. Make your appointment by calling 662-5346. Your donation will be credited to your Blood Club or to a hospital patient of your choice.

MRS. HERMAN IS MARRIED

Mrs. Laura Herman of Clinton and Jack Riggall of Mr. Dora, Florida exchanged nuptial vows in a January 21 ceremony performed in St. Cloud, Fla. by the Rev. Alvin Brazee.

2 FROM MANCHESTER GRADUATE FROM EASTERN

A total of 470 received degrees at commencement at Eastern Michigan University Sunday, Jan. 24 in Bowen Field House.

Ann L. Breitenwischer received a Bachelor of Science Degree and Mary L. Stowe was awarded the M. A. Degree in Ed.

PERSONAL

Mike Gauss has returned home from Herrick Memorial Hospital in Tecumseh and is improving satisfactorily.

For Your Valentine
Give Her Sanders Valentine Chocolates
HEART BOXES from 69¢ to \$5.00
also
Valentine Greeting Cards and Children's assortments from 10¢ to 75¢
We gift wrap and will mail to any point

UPHAUS REXALL DRUGS
S.D.D. LICENSE PHONE GARDEN 8-4881

JERSEY GUERNSEY MILK
STILL AVAILABLE
WE CARRY A COMPLETE LINE OF DAIRY PRODUCTS
Hirth Bros. Dairy
404 West Washington Ann Arbor
Phone NO 8-7991

NOTICE
That Ordinance No. 18 Village of Manchester relates that it shall be unlawful for the owner or occupant of any premises along which a sidewalk has been constructed and is existing to permit snow to remain on said walk for a longer period than six hours.
Lyle A. Widmayer
Village Clerk

1964 TOWNSHIP REAL and PERSONAL TAXES
Payable to Township Treasurer
Taxes Will Carry A 4% Penalty IF PAID ON OR AFTER February 14, 1965
Dog Licenses Issued for 1964 Bring Dogs Vaccination Record
License Male & Unsexed \$3 Female \$5
M. H. Wolfe, Twp. Treas.

The Mustang you want is on our floor right now!
1965 MUSTANG HARDTOP
MUSTANG SALES HAVE BEEN SENSATIONAL PRODUCTION HAS BEEN UPPED SO WE HAVE A GREATER SELECTION FOR YOU THAN EVER BEFORE -RIGHT ON OUR SHOWROOM FLOOR! COME TRY MUSTANG'S GREAT NEW 200-CU. IN. SIX OR TRY ONE OF THREE V-8'S! PICK THE ONE YOU WANT-TEST-DRIVE IT-DRIVE IT HOME TODAY!
As low as \$2395*
Test-drive Mustang's new lively Six engine at Ford Dealers
TOM MARSHALL, INC.
512 W. MAIN ST. • MANCHESTER, MICHIGAN

Toast for breakfast has become an American standard. But it's delicious at other times of the day, too...

side with a combination of butter, brown sugar, chopped nuts and nutmeg or butter, honey and grated orange rind.

George Washington Cherry Cobbler



February—NATIONAL CHERRY MONTH—the perfect time to brighten your meals with nature's most colorful fruit.

- 1-1/2 cups sugar, 2 cups sugar, 1/2 cup raisins, 2 cups red cherries, 2 cups prepared biscuit mix, 2 tablespoons cornstarch, 1 egg, 2 teaspoons lemon juice.

Combine sugar and cornstarch; add cherries and cook until thick. Add food coloring and lemon juice. Pour into a 9x9x2-inch baking dish.

New Cookware Rates Your "TLC" by LOUISE ALLEN



Are you cooking without grease—both the fumes and the mess? If so, you know the answer is in the bottom of your Teflon-coated cookware.

Before using for the first time, wash and spread a teaspoon of salad oil over the black interior to prepare the surface.

From then on, the magical material needs no help from fat or oil. Whether or not fat is used, your Teflon-coated cookware stays streak-free.

Before serving foods always preheat the coated pan for about a minute over a medium heat.

Throw away sticky, scorching pads when it comes to cleaning your new cookware.

OPEN LETTER CONT.

which is close to the heart of every Jaycee but has cast a shadow over every student at Manchester High. As unjust as it is, one individual has placed all other students at the high school in a bad situation.

It is with sincere regret that I have had to bring a matter of this nature to the attention of the community of Manchester. But at the same time, I believe that the destructive nature of this act no longer is directed at the school but has now been directed at an organization other than the school system.

Keith Doelker

GARY DRUMHILLER DIES OF LEUKEMIA

Gary "Butch" Drumhillier, 28 years of Quincy and Coldwater died only hours after he was admitted to the University Medical Center in Ann Arbor on Monday.

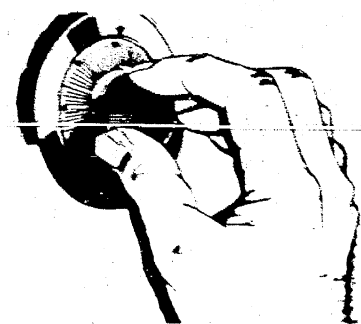


Funeral services were scheduled for Thursday at 1 p. m. at the Putnam Funeral Home in Coldwater.

Engagement Told

Mr. and Mrs. Paul Schweg of Manchester announce the engagement of their daughter, Josephine Marie to Michael Lindsay, son of Mr. and Mrs. Robert Decker of Dexter.

The RIGHT COMBINATION



Millions of modern homemakers have discovered that using the services of a locker plant with their home freezer is a combination that really pays off.

Join the hundreds of families in this community who know and use the right combination. Serving the Community over 17 Years MANCHESTER FROZEN FOOD LOCKERS

LEGAL NOTICES

APPOINTING TIME FOR HEARING CLAIMS AND DETERMINING HEIRS

STATE OF MICHIGAN

The Probate Court for the County of Washtenaw. In the Matter of the Estate of Janet Aileen Matteson, Deceased.

According to the Court that the presentation of claims against the estate should be limited, and the time and place be appointed to examine and adjust all claims.

Is Further Ordered, That public notice be given by publication of a copy of this order once each week for a successive weeks previous to the day of hearing.

John W. Conlin, Judge of Probate.

As Divorcees, Attorney's

CLASSIFIED WANTED ADS

A Singer Automatic Zig Zag in a desk-like new-no attachments needed to make designs, sew on buttons, buttonholes, appliques, darts, sews on zippers, etc.

DEALERSHIP OPPORTUNITY New revolutionary development, eliminates hard water problems in homes and industry.

FOR SALE: Two bedroom home on one floor—basement—oil heat—electric water heater and softener—some furniture.

INCOME PROPERTY FOR SALE: House-Duplex for sale by owner, excellent condition, good location in Manchester.

FISH FRY Every Friday For take-outs call 428-9211

BUMLER & SHANNON RECREATION TAVERN

CARD OF THANKS We wish to express our sincere appreciation to all the friends, relatives and neighbors from far and near who remembered us in any way on our 50th anniversary.

LOSE WEIGHT SAFELY with Dex-A-Diet Tablets. Only 58¢ at Uphaus Drug.

CARD OF THANKS I would like to thank our friends and relatives for the many acts of kindness shown to me in my recent illness.

CARD OF THANKS I'd like to take this opportunity to thank my friends and relatives for the many beautiful cards I received for my birthday.

SKATE SHARPENING—Chelsea Mower Shop, 20455 Old US-12 Phone 475-7235

YOUR FAVORITE FISH FRY Every Friday For take-outs call 428-9211

BUMLER & SHANNON RECREATION TAVERN

CARD OF THANKS We wish to express our sincere appreciation to all the friends, relatives and neighbors from far and near who remembered us in any way on our 50th anniversary.

Clayton and Willo Parr

Looking for Something To Do This Week-End? TAKE THE FAMILY BOWLING



at Friendly Chelsea Lanes "The Family Lanes"

CHELSEA LANES "A Good Place to Make Friends" Phone 475-8141 Bowling is so much fun

WHEEL ALIGNMENT BALANCING-FRAMES-AXLES STEERING-BRAKE SERVICE



DIAL Harrison 3-3830 3349 RUSSEL ROAD TECUMSEH

JOHNNIES SERVICE

AT DEVEREAUX FURNITURE in BROOKLYN



EVERYTHING MUST GO AND MOST OF THE MERCHANDISE FIRE DESTROYED OUR WAREHOUSE AND MOST OF THE MERCHANDISE SAVE \$\$\$

OUR \$100,000 FIRE, ANSWERED BY SIX FIRE DEPARTMENTS, FORCES US TO HOLD A GIGANTIC FIRE SALE, GIVING YOU TREMENDOUS SAVINGS.

EVERY SATURDAY NIGHT IS FAMILY NIGHT FEATURING ROAST ROUND OF BEEF \$1.49 Children under 12.....85¢

OPEN 7 DAYS A WEEK 1 a.m. to 8 p.m. Sundays 'til 7 p.m.



HOOVER BALL IS SHAPING UP

Hoover Ball building is beginning to take shape as pictured, as of now 207 tons of steel erection has been trued up. The trued up truss is going to be 20 feet from the finished floor. Some of the connections are riveted at the shop and all field connections are torsion bolts. Field riveting in the past few years is becoming a lost art and torsion bolts are fast replacing field riveting.

SUGGESTIONS GIVEN BY SHERIFF

A better understanding of the function of the Washtenaw County Sheriff's Department was attempted at a meeting of the Manchester Village Council Monday night. Present at the Council meeting was Sheriff Douglas Harvey, who discussed the problem of receiving radio messages from the Manchester police car. He suggested that the village invest in a new radio for the car as well as an emergency rescapist.

VILLAGE CAUCUS

NOTICE is hereby given that a Citizens Party Village Caucus for the purpose of placing in nomination candidates for the following Village Offices: President, Clerk, Treasurer, Trustees, (3 for two year terms) Assessor

For the Village of Manchester, County of Washtenaw State of Michigan, and for the purpose of transacting such other business as may properly come before it, will be held at

**Council Room upstairs - Village Hall
On Monday, the 15th day of Feb., 1965**

At 7:00 o'clock P.M.

By Order of Lyle A. Widmayer

VILLAGE CAUCUS

NOTICE is hereby given that a Progressive Party Village Caucus for the purpose of placing in nomination candidates for the following Village Offices: President, Clerk, Treasurer, Trustees, (3 for two year terms) Assessor

For the Village of Manchester, County of Washtenaw, State of Michigan, and for the purpose of transacting such other business as may properly come before it, will be held at

**Fire Engine Room - Village Hall
On Monday, the 15th day of Feb., 1965**

At 7:00 o'clock P.M.

By Order of Lyle A. Widmayer

FUTURE ATHLETIC BOOSTERS



6th Graders coached by Maynard Blossom & Don Mann



5th Grades coached by Paul Boehler & Irv Roberts

METHOD CHURCH TO HAVE EVANGELISTIC SERVICES

Beginning with the morning services February 21st and continuing each evening through Friday, February 26th, there will be special evangelistic services with the Reverend Elsie Johns as guest preacher.

Miss Johns is pastor of the Clarenceville Methodist Church near Farmington, where she has been pastor for 24 years.

Miss Johns is personally known to Rev. and Mrs. Jesse Epps of the Manchester Methodist Church. They have been privileged to hear her preach several times in her own pulpit, her appeal to the spiritual needy will be an

For second year in row the Athletic Booster's are putting on their Alumni vs Faculty Basketball Bust, featuring 6th grade vs sixth and the 7th grade vs the eighth grade. This annual event will take place at the Manchester High School on Saturday, February 13 at 7:00 p.m. Donations will serve the purpose of future athletic of Manchester.

inspiration and a spiritual uplift all who come to hear her. She must be heard to be appreciated.

All these services will be open to everyone in the community. Everyone is invited and urged to come and participate in the service, Rev. Epps said.

MAIN STREET

You'd almost think spring had arrived—we are surely having some lovely weather with the temperature in the sixties on Wednesday. Tuesday broke a record. It was the warmest Feb. 10th in 93 years. Freezing rain started to fall about five o'clock Tuesday afternoon. Freezing at night the temperature started to climb and it rose 13 degrees in 45 minutes. This too, set a record! It is a good thing some shoveling to do. As it is some of the roads in Washtenaw did almost use a small boat.

When we think about spring we always associate it with lovely spring dresses! The two seem to go together. Then writing a Main Street column, what could be more appropriate than telling that we are going to have a brand new dress shop. A branch of the Chelsea Patty Ann Shop will be moving into the part of the Limpert Building, formerly it was all antique shop. Mrs. Effie Morgan says that if Manchester receives her shop the people of Chelsea did she will have nothing to worry about. The Patty Ann Shop at 118 South Middle Street will have its seventeenth anniversary Feb. 15. Mrs. Morgan hopes that she will be able to open the Manchester store on this seventeenth anniversary date. The new shop owner is not new to this area. She has lived in Chelsea for the past 30 years and came here from Ohio. She worked Federal Screw Plant for ten years and for nearly nine years at Spring Shop.

"People have been wonderful to me," she said. "I hope that I'll give the same reception in Manchester. The store will have a complete line of junior, straight and half sizes, including all wearing apparel for women and some children's wear.

With such lovely weather, it doesn't seem as if it is the time to be about snow. But our postmaster, Marvin Kirk suggests that that people who have mail delivery should have the area in front of that mailbox clear. That is, they should have snow shoveled away and have their cars parked away from the area. Mail carriers are not required to leave their cars. As we understand it, they should not have the car because they are carrying U.S. mail. So if some day you look out the window and see your mail man wip past—look around for the reason. Anyway, the postmaster asks that people be more careful and considerate of the carriers.

We were interested to learn that Tom Riordan, co-publisher and editor of the Tecumseh Herald will be coordinating the publicity for the Michigan Week campaign, May 16-22. Congratulations, Tom!

There has been a change in the Blood Bank Schedule. The date which had been set for March 18 has been changed to May 13. The bank has 20 pints. Several people in the area have been contributing to the Ann Arbor Blood Bank at the open clinic at the 2729 Orchard Road Red Cross Building. If you go to the Blood Clinic be there and have your contribution credited to the Manchester Blood Bank.

For a long time the Red Cross has been asking for our blood—until recently we didn't know that there is a demand for teeth, at we no longer use. Maybe we better clarify this. The Operation Tooth Club doesn't want everyone's teeth—just the ones the youngsters lose. "Operation Tooth" 1307 S. Forest, Ann Arbor is a collection center for the BABY TOOTH SURVEY which is sponsored by the Greater St. Louis Citizens' Committee for Nuclear Information in cooperation with the Schools of Dentistry at St. Louis and Washington Universities. They are collecting 50,000 baby teeth a year. The object is to learn about the accumulation of this radioactive substance in the human body. All in the interest of science. So if your child sends a tooth he'll receive a button to wear. As far as we are able to learn Philip Ludwick is the first child in Manchester to receive a button. Those interested might be able to get more information on "Operation Tooth Club" from Mrs. Ludwick.

For those who are following our teen band—The Del-Tinos, they are booked for an engagement at the Hudson High School Dance following the game on Saturday night.

Sorry to learn that our former pressman, Ed (Simon) Steele cut his right middle finger while working at the R. L. Polk Plant in Jackson Wednesday.

The County Bookmobile won't be operating the rest of the week due to a traffic accident Tuesday in Salem Township. No one was injured when the bookmobile rolled over into a ditch after sliding on ice on Curtis Road. Richard Huntley, 19, was the driver of the van truck.

Mike Wolfe, our township treasurer comes up with some good news! Everyone will be glad to know that the township treasurer, in agreement with the Township Board is extending the 4% penalty tax payment until March 1st.

OPTIMIST-FARMERS NIGHT PLANNED

Farmers in the area are all being invited to attend the twenty-first Farmers' Night next time the club meets on Monday, Feb. 22.

The dinner meeting is slated for 6:30 p.m. at the Emanuel Church Hall. Tickets are available at E. G. Mann's Mill, L. V. Elk electric and at the Union Savings Bank. Working with Stan Roesch, chairman are James Hart and Ray Tirb. The committee is anxious that farmers know that this year they do not have to have special invitations from club members. Tickets are available and all farmers are welcome.

TAX PAYMENT TIME EXTENDED

M. H. Wolfe, Manchester Township treasurer in concurrence with the Manchester Township Board is waiving the 4 per cent tax penalty until March 1st.

OBSERVES 86 YEARS

Henry Kemmer observed his 86th birthday on February 4th. He said he appreciated all the kindnesses extended to him by his friends and relatives.

CHANGE OF TIME

MOM's Club will meet at 7:30 p.m. at the Emanuel Church hall the first Tuesday every month instead of at 8 p.m.

MARCH OF DIMES OVER THE TOP

Final reports for the March of Dimes campaign in Manchester shows that this year's drive exceeded all previous campaigns. Total collected this year was \$1,031.30 compared to the highest previous record of \$986.62 last year.

Mrs. Richard Kuntz and Mrs. Roger Morrison, co-chairmen expressed appreciation to the many who helped.

In a break-down the Mothers' March totaled \$451.45; Student Council Dance, \$53.75; Peanut and Balloon sale, \$108.44; Burch Drug Coffee Day, \$30.84; Mailers, \$204.00; canisters, \$72. and the Square Dance at Pleasant Lake School, \$109.94.

Special thanks went to the Jolly Farmerettes 4-H Club, Mrs. Bernard Kemner, leader; and Hills and Valley 4-H Club, Mrs. Marvin Kirk, leader, for the fine cooperation of the girls in the balloon and peanut sale. They also thanked Mrs. Richard Way and her committee for the work on the square dance.

Special thanks also went to Mrs. Del Ludwick who was the chairman of the Mothers' March; special events chairman, Mrs. Richard Way, Mailer chairman, Mrs. Ronald Jenter; Canisters, Mrs. Clarence Schaible; and Publicity Chairman, Mrs. Tom Walton.

SUMMER COURSE CONSIDERED BY SCHOOL BOARD

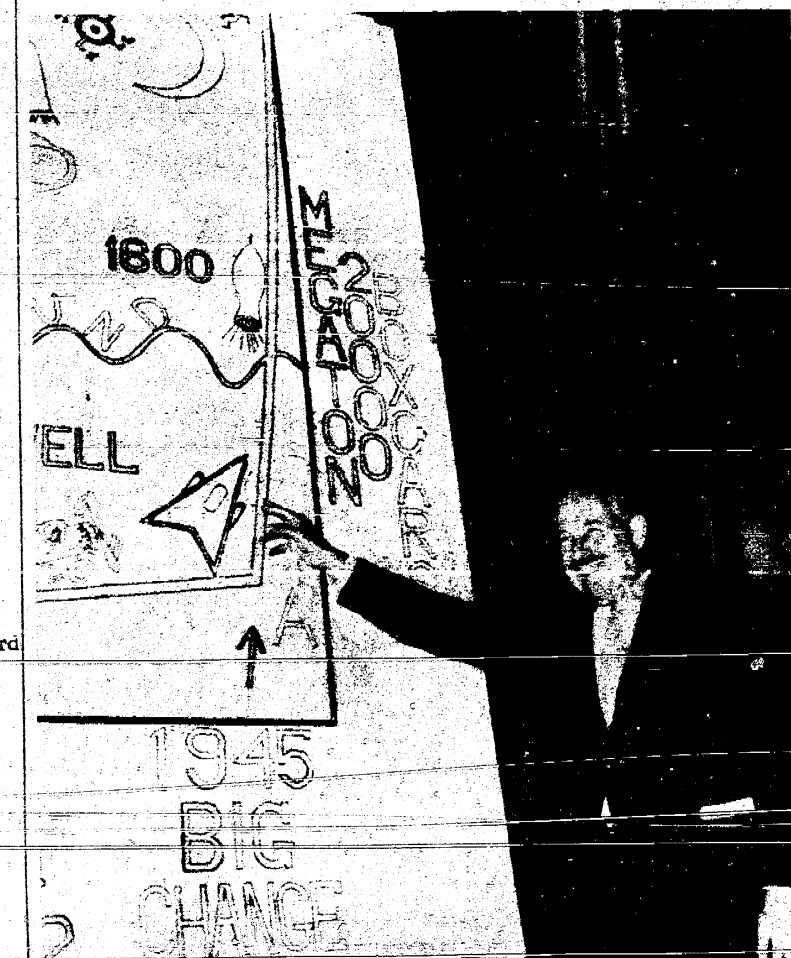
Manchester Board of Education gave tentative approval to a pilot course in the Humanities to be offered to junior high and senior high students next summer in the high school. This course, to be developed by local staff members and administrators will deal with art, music, architecture, philosophy, drama and literature. Interested students will have an opportunity to explore these offerings in the classroom and on field trips. Field trips will be made to area museums, libraries, university facilities and other points of interest.

This program is not a corrective program or one of the remedial nature, but one of enrichment to enable students to broaden their horizons. Details will be publicized later in the school news letter and in the Manchester Enterprise.

In other business the board approved payment of \$7,824.29 in bills, approved a spring concert tour of two days duration for the Varsity Choir, approved new three year contracts for Mr. Chester Koceski and Mr. Theodore Tapping and renewed the maintenance contract on the heating controls in all of the school buildings.

Treasurer Dan Boutell, Trustee Carl Pedersen and Superintendent Robert Swartz will attend the American Association of School Administrators' Convention in Atlantic City, New Jersey from February 13 through February 17. Among the speakers on the convention schedule are Under Secretary of State George W. Ball, U.S. Secretary of the Interior Steward L. Udall, Roscoe Drummond, Washington correspondent and Dr. Walter W. Heller, recently the chairman of the President's Council of Economic Advisors.

Profit Sharing Report To Highlight Dinner



At 6:30 p.m. Monday, February 15, Double A Products Co. will host their employees and their wives or husbands at a Profit Sharing dinner at the Michigan Union in Ann Arbor.

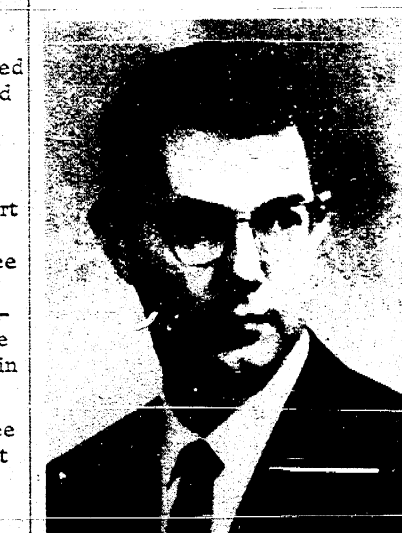
All participants in the profit sharing program will be given their annual statement including the final 1964 profit sharing distribution. Russell Cooper of Double A will open the program and H. H. Upton Jr. will welcome the guests. Music will be furnished by Peter Clement's trio.

Highlighting the program will be well-known management consultant, J. Lewis Powell whose subject "Collapse of Time" promises to be most interesting.

Powell, whose home is in Alexandria, Va. travels some 120 thousand miles a year as he follows his profession of conducting management schools for industry throughout the country. He served ten years, until 1962, in the Office of the Secretary of Defense in Washington, D. C. where he was coordinator of military and industrial preparedness production. In 1964 he was given national recognition for his participation in management courses conducted in New York City.

In his talk on "The Collapse of Time" he spans the centuries from Adam to atom in his explanation of scientific progress. His homespun humor and sharp satire is noted for holding the interest of his varied audiences.

MISSIONARY TO SPEAK AT SHARON CHURCH



In 1958 as laymen to work in the program of the Sierra Leone Conference. Mr. Spencer has developed the department of industrial arts in Albert Academy, a secondary school for boys in Freetown.

Mr. Spencer completed his degree in industrial arts at Oregon State College and took additional work in Cascade College in Portland, Oregon.

The Spencers, and their two children, will live in Washington State during their furlough.

Members of the Sharon EUB Church and their friends are invited to attend this service. The Rev. John Price is the pastor of the Church.

COMING EVENTS

Lenten services will start at the Sharon EUB Church at 8 p.m. Wednesday, March 3.

Hi-Lighters Class will meet at the home of Mr. and Mrs. Leonard Days at 8 p.m. Feb. 23.

Tuesday, March 2 the Friendship Class of the Sharon EUB Church will meet at 8:00 p.m. Mr. and Mrs. Spencer were commissioned for overseas service.