

### Taft Hartley Law Invoked But Four Times by Administration

Use of Taft-Hartley Act when given to a new dock strike would prevent only the fourth use of the national emergency provisions of that law since its passage in 1947.

President Eisenhower used the Taft-Hartley Act in an emergency procedure in the case of the steel strike in 1952. He also invoked it in the case of the coal strike in 1953. In the case of the telephone strike in 1954, he invoked it in an emergency procedure in the case of the telephone strike in 1954.

President Eisenhower has invoked the Taft-Hartley Act in an emergency procedure in the case of the telephone strike in 1954. He has also invoked it in the case of the coal strike in 1953 and the steel strike in 1952.

### Blend of Diplomacy, Arms For Leader of United Nations Unit

MAJ. GEN. E. M. BURNS, commander of the U.N. Truce Supervision Commission, is expected to visit the Middle East in the near future.

General Burns, who has been in the Middle East for several months, is expected to visit the Middle East in the near future. He will be accompanied by a number of other officials.

General Burns is expected to visit the Middle East in the near future. He will be accompanied by a number of other officials.

### Electric Blankets Cost Less Than Ever!

Check Your Electric Appliance Dealer's ELECTRIC BLANKET ADS.

RECONDITIONED APPLIANCES OF ALL KINDS.

**L. V. KIRK**  
ELECTRIC WIRING & SUPPLIES

### Michigan Bell Rate Hike Felt Here

The Michigan Bell Telephone Company has filed a petition with the Public Service Commission for a 5 per cent rate increase in company revenues.

The Michigan Bell Telephone Company has filed a petition with the Public Service Commission for a 5 per cent rate increase in company revenues. The commission is expected to rule on the petition in the near future.

### Mrs. Krueger Civic Club Plans Party

No business of a serious nature will be transacted by the Civic Club on Monday night, December 10.

The Civic Club will hold a party on Monday night, December 10. The party will be held at the club's headquarters.

### Christmas Fantasy At Rotunda

The fourth annual Ford Rotunda Christmas Fantasy will be held at the Rotunda on Monday night, December 10.

The Ford Rotunda Christmas Fantasy will be held at the Rotunda on Monday night, December 10. The event will feature a variety of performances.

### Christmas Sale Lags In First Check

Returns for the first ten days of the 60th annual Christmas Seal Sale are running behind the same period in the 1955 season.

The Christmas Seal Sale is currently underway. Returns for the first ten days are running behind the same period in the 1955 season.

### Edwin Buss Farmer Dies

Edwin B. Buss, who lived his entire lifetime in the farm where he was born, died on Monday.

Edwin B. Buss, who lived his entire lifetime in the farm where he was born, died on Monday. He was a well-known farmer in the area.

### Wide Awake Farm Bureau Sets Party Date

The Wide Awake Farm Bureau will hold its Christmas party on Monday night, December 10.

The Wide Awake Farm Bureau will hold its Christmas party on Monday night, December 10. The party will be held at the bureau's headquarters.

### Hospitalized

Lynn Burch was reportedly hospitalized at the University Hospital in Ann Arbor.

Lynn Burch was reportedly hospitalized at the University Hospital in Ann Arbor. She is recovering from a recent illness.

### Calendar of Events

The Christmas Maccabean party will be held at the Legion Hall on Monday night, December 10.

The Christmas Maccabean party will be held at the Legion Hall on Monday night, December 10. The party will feature a variety of performances.

### Service Notes

PFC Donnie Marshall, son of Mr. and Mrs. Don Marshall, died on Monday.

PFC Donnie Marshall, son of Mr. and Mrs. Don Marshall, died on Monday. He was a member of the military.

**Tirb Chevrolet Co.**  
131 Adrian Ph. GA 8-2431

**MINGUS MARKET**  
Groceries—Wares—Fresh Fruits & Veg.—Beer & Wine  
Open Wed., Fri., and Sat. Eves.  
WE BUY EGGS Phone GA 8-4321

### Christmas Seal Sale Lags In First Check

Returns for the first ten days of the 60th annual Christmas Seal Sale are running behind the same period in the 1955 season.

The Christmas Seal Sale is currently underway. Returns for the first ten days are running behind the same period in the 1955 season.

### Edwin Buss Farmer Dies

Edwin B. Buss, who lived his entire lifetime in the farm where he was born, died on Monday.

Edwin B. Buss, who lived his entire lifetime in the farm where he was born, died on Monday. He was a well-known farmer in the area.

### Wide Awake Farm Bureau Sets Party Date

The Wide Awake Farm Bureau will hold its Christmas party on Monday night, December 10.

The Wide Awake Farm Bureau will hold its Christmas party on Monday night, December 10. The party will be held at the bureau's headquarters.

### March Leader Mrs. Krueger Civic Club Plans Party

No business of a serious nature will be transacted by the Civic Club on Monday night, December 10.

The Civic Club will hold a party on Monday night, December 10. The party will be held at the club's headquarters.

### Christmas Fantasy At Rotunda

The fourth annual Ford Rotunda Christmas Fantasy will be held at the Rotunda on Monday night, December 10.

The Ford Rotunda Christmas Fantasy will be held at the Rotunda on Monday night, December 10. The event will feature a variety of performances.

### Christmas Seal Sale Lags In First Check

Returns for the first ten days of the 60th annual Christmas Seal Sale are running behind the same period in the 1955 season.

The Christmas Seal Sale is currently underway. Returns for the first ten days are running behind the same period in the 1955 season.

### Edwin Buss Farmer Dies

Edwin B. Buss, who lived his entire lifetime in the farm where he was born, died on Monday.

Edwin B. Buss, who lived his entire lifetime in the farm where he was born, died on Monday. He was a well-known farmer in the area.

### Wide Awake Farm Bureau Sets Party Date

The Wide Awake Farm Bureau will hold its Christmas party on Monday night, December 10.

The Wide Awake Farm Bureau will hold its Christmas party on Monday night, December 10. The party will be held at the bureau's headquarters.

### Hospitalized

Lynn Burch was reportedly hospitalized at the University Hospital in Ann Arbor.

Lynn Burch was reportedly hospitalized at the University Hospital in Ann Arbor. She is recovering from a recent illness.

### Calendar of Events

The Christmas Maccabean party will be held at the Legion Hall on Monday night, December 10.

The Christmas Maccabean party will be held at the Legion Hall on Monday night, December 10. The party will feature a variety of performances.

### Michigan Bell Rate Hike Felt Here

The Michigan Bell Telephone Company has filed a petition with the Public Service Commission for a 5 per cent rate increase in company revenues.

The Michigan Bell Telephone Company has filed a petition with the Public Service Commission for a 5 per cent rate increase in company revenues. The commission is expected to rule on the petition in the near future.

### Mrs. Krueger Civic Club Plans Party

No business of a serious nature will be transacted by the Civic Club on Monday night, December 10.

The Civic Club will hold a party on Monday night, December 10. The party will be held at the club's headquarters.

### Christmas Fantasy At Rotunda

The fourth annual Ford Rotunda Christmas Fantasy will be held at the Rotunda on Monday night, December 10.

The Ford Rotunda Christmas Fantasy will be held at the Rotunda on Monday night, December 10. The event will feature a variety of performances.

### Christmas Seal Sale Lags In First Check

Returns for the first ten days of the 60th annual Christmas Seal Sale are running behind the same period in the 1955 season.

The Christmas Seal Sale is currently underway. Returns for the first ten days are running behind the same period in the 1955 season.

### Edwin Buss Farmer Dies

Edwin B. Buss, who lived his entire lifetime in the farm where he was born, died on Monday.

Edwin B. Buss, who lived his entire lifetime in the farm where he was born, died on Monday. He was a well-known farmer in the area.

### Wide Awake Farm Bureau Sets Party Date

The Wide Awake Farm Bureau will hold its Christmas party on Monday night, December 10.

The Wide Awake Farm Bureau will hold its Christmas party on Monday night, December 10. The party will be held at the bureau's headquarters.

### Hospitalized

Lynn Burch was reportedly hospitalized at the University Hospital in Ann Arbor.

Lynn Burch was reportedly hospitalized at the University Hospital in Ann Arbor. She is recovering from a recent illness.

**THE MANCHESTER ENTERPRISE**  
A WEEKLY NEWSPAPER IN ITS 90th YEAR—DEVOTED TO PUBLIC SERVICE IN THE INTEREST OF A PROGRESSIVE MANCHESTER  
THURSDAY, DECEMBER 6, 1956, MANCHESTER, MICHIGAN

### FOR WANT ADS PHONE GARDEN 8-3521

### Manchester Area Residents Taken By Death Recently

Death has claimed the lives of six persons well known in the Manchester area within the last few days. This is unusual for this community.

Death has claimed the lives of six persons well known in the Manchester area within the last few days. This is unusual for this community.

### Christmas Concert Tuesday

A Christmas Concert by the Manchester High School Band will be given Tuesday, Dec. 11, 1956, at 8:00 in the Civic Auditorium.

A Christmas Concert by the Manchester High School Band will be given Tuesday, Dec. 11, 1956, at 8:00 in the Civic Auditorium.

### Mrs. Ahrens, Sr. To Be Honored At Open House

Open house is being held Sunday, December 3, for Mrs. William Ahrens, Sr. at her home at 401 Michigan Street.

Open house is being held Sunday, December 3, for Mrs. William Ahrens, Sr. at her home at 401 Michigan Street.

### Christmas Seal Sale Lags In First Check

Returns for the first ten days of the 60th annual Christmas Seal Sale are running behind the same period in the 1955 season.

The Christmas Seal Sale is currently underway. Returns for the first ten days are running behind the same period in the 1955 season.

### Edwin Buss Farmer Dies

Edwin B. Buss, who lived his entire lifetime in the farm where he was born, died on Monday.

Edwin B. Buss, who lived his entire lifetime in the farm where he was born, died on Monday. He was a well-known farmer in the area.

### Wide Awake Farm Bureau Sets Party Date

The Wide Awake Farm Bureau will hold its Christmas party on Monday night, December 10.

The Wide Awake Farm Bureau will hold its Christmas party on Monday night, December 10. The party will be held at the bureau's headquarters.

### Michigan Bell Rate Hike Felt Here

The Michigan Bell Telephone Company has filed a petition with the Public Service Commission for a 5 per cent rate increase in company revenues.

The Michigan Bell Telephone Company has filed a petition with the Public Service Commission for a 5 per cent rate increase in company revenues. The commission is expected to rule on the petition in the near future.

### Mrs. Krueger Civic Club Plans Party

No business of a serious nature will be transacted by the Civic Club on Monday night, December 10.

The Civic Club will hold a party on Monday night, December 10. The party will be held at the club's headquarters.

### Christmas Fantasy At Rotunda

The fourth annual Ford Rotunda Christmas Fantasy will be held at the Rotunda on Monday night, December 10.

The Ford Rotunda Christmas Fantasy will be held at the Rotunda on Monday night, December 10. The event will feature a variety of performances.

### Christmas Seal Sale Lags In First Check

Returns for the first ten days of the 60th annual Christmas Seal Sale are running behind the same period in the 1955 season.

The Christmas Seal Sale is currently underway. Returns for the first ten days are running behind the same period in the 1955 season.

### Edwin Buss Farmer Dies

Edwin B. Buss, who lived his entire lifetime in the farm where he was born, died on Monday.

Edwin B. Buss, who lived his entire lifetime in the farm where he was born, died on Monday. He was a well-known farmer in the area.

### Wide Awake Farm Bureau Sets Party Date

The Wide Awake Farm Bureau will hold its Christmas party on Monday night, December 10.

The Wide Awake Farm Bureau will hold its Christmas party on Monday night, December 10. The party will be held at the bureau's headquarters.

### Hospitalized

Lynn Burch was reportedly hospitalized at the University Hospital in Ann Arbor.

Lynn Burch was reportedly hospitalized at the University Hospital in Ann Arbor. She is recovering from a recent illness.

### Manchester Area Residents Taken By Death Recently

Death has claimed the lives of six persons well known in the Manchester area within the last few days. This is unusual for this community.

Death has claimed the lives of six persons well known in the Manchester area within the last few days. This is unusual for this community.

### Christmas Concert Tuesday

A Christmas Concert by the Manchester High School Band will be given Tuesday, Dec. 11, 1956, at 8:00 in the Civic Auditorium.

A Christmas Concert by the Manchester High School Band will be given Tuesday, Dec. 11, 1956, at 8:00 in the Civic Auditorium.

### Mrs. Ahrens, Sr. To Be Honored At Open House

Open house is being held Sunday, December 3, for Mrs. William Ahrens, Sr. at her home at 401 Michigan Street.

Open house is being held Sunday, December 3, for Mrs. William Ahrens, Sr. at her home at 401 Michigan Street.

### Christmas Seal Sale Lags In First Check

Returns for the first ten days of the 60th annual Christmas Seal Sale are running behind the same period in the 1955 season.

The Christmas Seal Sale is currently underway. Returns for the first ten days are running behind the same period in the 1955 season.

### Edwin Buss Farmer Dies

Edwin B. Buss, who lived his entire lifetime in the farm where he was born, died on Monday.

Edwin B. Buss, who lived his entire lifetime in the farm where he was born, died on Monday. He was a well-known farmer in the area.

### Wide Awake Farm Bureau Sets Party Date

The Wide Awake Farm Bureau will hold its Christmas party on Monday night, December 10.

The Wide Awake Farm Bureau will hold its Christmas party on Monday night, December 10. The party will be held at the bureau's headquarters.

### Hospitalized

Lynn Burch was reportedly hospitalized at the University Hospital in Ann Arbor.

Lynn Burch was reportedly hospitalized at the University Hospital in Ann Arbor. She is recovering from a recent illness.

The Manchester Enterprise

ESTABLISHED 1887. Published Each Thursday at Manchester, Michigan. MEMBER OF THE MICHIGAN PRESS ASSOCIATION

Entered as second class matter at the Post Office at Manchester, Michigan under the Act of March 3, 1879.

Subscription Rates: \$1.50 per year, \$3.00 per year outside of Michigan. Postage paid in United States, as postmaster and agent for the publication.

Advertising Rates: Classified Ads 20c per line, 40c minimum. Display Advertising by contract.

DO YOU GIVE TO YOUR CHURCH?

The bulk of church members give little more than pennance to keep their churches going, according to a copyrighted article in the November 18 issue of Changing Times.

The overwhelming majority of giving is on a \$1-a-week basis. But many exceptional church attenders contribute as little as \$2 a year for the support of the church to which they attend.

Of the ten Protestant churches receiving the greatest contribution in the United States, only one gave the average of \$75.54 per member a year.

If you really want to help your church financially, plan for the year. Your pastor will appreciate knowing he can count on a certain sum from you.

If you don't go to church very often, there is even more reason for you to make a firm pledge for the whole year.

If you already use envelopes you might give thought to a substantial increase.

Pay on time, too. Remember church expenses take no vacation.

A church that has to fight to get ahead usually is a live church. But don't let this thought comfort you too much.

A county day for teen-agers. Our community participated in the recent Boys and Girls County Day conducted under the sponsorship of the American Legion and Washington County of Idaho.

The program is one of exceptional merit and one which should be encouraged and enlarged upon.

Officially designated as the Washington County Boys and Girls County Day, the event was initiated three years ago and currently functions under the sponsorship of the Washington County Council of the American Legion.

The county committee arranging the program decided that the pattern of the previous three years be followed indefinitely.

Arrangements were made for a speaker's bureau through the courtesy of the Washington County Bar Association.

The program also included arrangements for each participating junior and senior high school to select 25 county officers to represent their schools on the special day.

Golden Guernsey Milk STILL AVAILABLE. WE CARRY A COMPLETE LINE OF DAIRY PRODUCTS.

Hirth Bros. Dairy. 104 West Washington. Phone NO 8-7591. Ann Arbor.

Williamson Air Conditioners. Mitchell Air Conditioners. Water Heaters.

MCGUIRE ELECTRIC & HEATING. PR. GA 8-2451.

Porcupine Story

A 'Tail' Of Woe

For Luckless Foe

You can't travel in northern Michigan without glimpsing that ever-threatening porcupine.

Because of its well-known barb, the porcupine is the most feared mammal in Michigan.

It is the porcupine's tail, the grand old porcupine's tail, which is the key to his defense.

When the porcupine is threatened, he curls up his tail and the sharp barbs point toward his assailant.

It is this defense which has made the porcupine a favorite food of the bear.

When the bear attacks the porcupine, he receives many barbs in his face and neck.

The porcupine's tail is so long that it can reach the ground and dig into the soil.

When the porcupine is threatened, he curls up his tail and the sharp barbs point toward his assailant.

It is this defense which has made the porcupine a favorite food of the bear.

When the bear attacks the porcupine, he receives many barbs in his face and neck.

The porcupine's tail is so long that it can reach the ground and dig into the soil.

When the porcupine is threatened, he curls up his tail and the sharp barbs point toward his assailant.

It is this defense which has made the porcupine a favorite food of the bear.

When the bear attacks the porcupine, he receives many barbs in his face and neck.

The porcupine's tail is so long that it can reach the ground and dig into the soil.

When the porcupine is threatened, he curls up his tail and the sharp barbs point toward his assailant.

It is this defense which has made the porcupine a favorite food of the bear.

When the bear attacks the porcupine, he receives many barbs in his face and neck.

The porcupine's tail is so long that it can reach the ground and dig into the soil.

When the porcupine is threatened, he curls up his tail and the sharp barbs point toward his assailant.

It is this defense which has made the porcupine a favorite food of the bear.

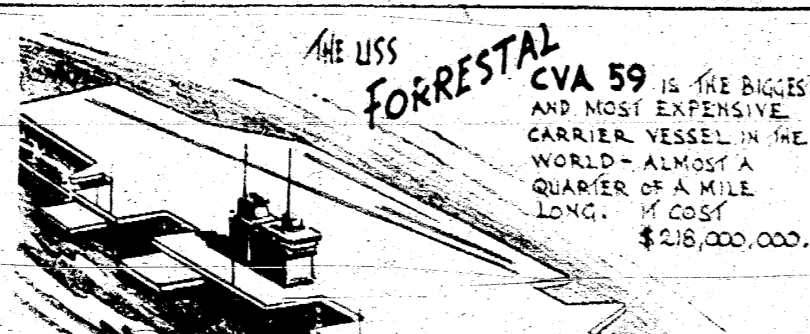
When the bear attacks the porcupine, he receives many barbs in his face and neck.

The porcupine's tail is so long that it can reach the ground and dig into the soil.

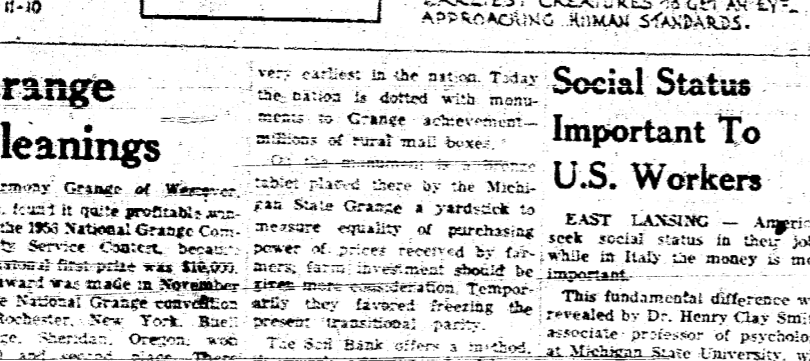
When the porcupine is threatened, he curls up his tail and the sharp barbs point toward his assailant.

It is this defense which has made the porcupine a favorite food of the bear.

When the bear attacks the porcupine, he receives many barbs in his face and neck.



THE USS FORRESTAL CVA 59 IS THE BIGGEST AND MOST EXPENSIVE CARRIER VESSEL IN THE WORLD - ALMOST A QUARTER OF A MILE LONG. \$218,000,000.



THE SNAIL WAS ONE OF THE EARLIEST CREATURES TO GET AN EYE. APPROACHING HUMAN STANDARDS.

Grange Cleanings. Highway Grange of Westport, Penn. found it quite profitable among the 190 National Grange County Service Centers.

LEGAL. To Whom It May Concern. Wherefore the undersigned do hereby certify that the within and foregoing is a true and correct copy of the original as the same appears in the records of the County of Washtenaw.

LEGAL. STATE OF MICHIGAN. IN THE CIRCUIT COURT FOR THE COUNTY OF WASHTENAW. In Chancery. Dora N. Guy, Plaintiff vs. James R. Brown, Defendant.

Gifts Galore... for family... for friends. Argos Camera. Evening in Paris by Bourgeois. Eastman-Kodak Cameras.

Wholesale Living For Largo Family. Mrs. Peters, mother of 16, says she orders six pounds of hamburger each week.

Medical Student Diary Describes Early U-M Life. It may sound strange to you when you think of the University of Michigan.

LEGAL. State of Michigan, The Probate Court for the County of Washtenaw. In the matter of the Change of Name of Dorothy Eleanor Ross.

Social Status Important To U.S. Workers. EAST LANSING - American seek social status in their jobs. In Italy the money is most important.

Saline Bowling. DUCK GETS HOME. The Michigan Duck Club has a new member.

Stonybrook by TRIFARI. A TRAINLOAD OF VALUES! Gifts Galore... for family... for friends.

Christmas Store Hours. Monday 9:30 A.M. to 9:30 P.M. Tuesday thru Saturday 9:30 A.M. to 9:30 P.M.

Uphaus Rexall Drug. Phone Garden 8-253. Manchester.

Dutchmen Win Opener As Hornets and Big Reds Stumble

Manchester Team Wins First Game By Score Of 57-37

Manchester High School's football team which last season won 18 of 27 games in winning the title of the Lakes title, opened its campaign Tuesday night in a decisive 57-37 victory over the veteran Dutch team.

Manchester Women's Bowling. The Manchester Women's Bowling Club held its annual meeting at the Lakes Hotel.



These are the players who will represent Saline High School during the 1956-57 football season. Coach Charles Lindemann is in the center.

Saline High's Hornets Drop Opening Contest To Dundee Five, 61-43. Dundee's 512 for Saline was the best in the history of the Hornets.

Manchester Tuesday Night Bowling. The Manchester Bowling Club held its annual meeting at the Lakes Hotel.

LEGAL. STATE OF MICHIGAN. IN THE CIRCUIT COURT FOR THE COUNTY OF WASHTENAW. In Chancery. Dora N. Guy, Plaintiff vs. James R. Brown, Defendant.

LEGAL. STATE OF MICHIGAN. IN THE CIRCUIT COURT FOR THE COUNTY OF WASHTENAW. In Chancery. Dora N. Guy, Plaintiff vs. James R. Brown, Defendant.

YOUR CHRISTMAS SHOPPING CAN BE A REAL PLEASURE. If you heed the advice of hundreds of families who are shopping in Chelsea this year.

Tirb Chevrolet Co. 131 Adrian. Ph: GA 8-2431. CHRISTMAS STORE HOURS: Open Fri and Saturday 7-9-11-15-21-22 Also Mon, Dec. 17th and Wed. and Thurs Dec 19-20



Deaths—Continued from Page 5. One grandchild, Mrs. Betty Brown of Jackson and one grand-grandchild and several nieces and nephews.

SYLVAN THEATRE—Chelsea, Michigan. Thurs., Fri., Sat., Dec. 6-7-8. Delux Double Feature "THE WENGLINGER" and "A NEW GUN IN COAT" with JOHN IRELAND and BEVERLY GARLAND.

"ABBOTT & COSTELLO" "MEET THE KILLERS" Sun., Mon., Tues., Dec. 9-10-11. He was CONDEMNED!

BEYOND A REASONABLE DOUBT DANA ANDREWS JOAN FONTANA

Ready Mix Concrete PHONE MANCHESTER G.A. 8-5153 Radio Dispatch Truck MANCHESTER READY MIX CO. 215 S. MALCOLM

Mix Concrete PHONE MANCHESTER G.A. 8-5153 Radio Dispatch Truck MANCHESTER READY MIX CO. 215 S. MALCOLM

Ready Mix Concrete PHONE MANCHESTER G.A. 8-5153 Radio Dispatch Truck MANCHESTER READY MIX CO. 215 S. MALCOLM

Mix Concrete PHONE MANCHESTER G.A. 8-5153 Radio Dispatch Truck MANCHESTER READY MIX CO. 215 S. MALCOLM

Ready Mix Concrete PHONE MANCHESTER G.A. 8-5153 Radio Dispatch Truck MANCHESTER READY MIX CO. 215 S. MALCOLM

Mix Concrete PHONE MANCHESTER G.A. 8-5153 Radio Dispatch Truck MANCHESTER READY MIX CO. 215 S. MALCOLM

Ready Mix Concrete PHONE MANCHESTER G.A. 8-5153 Radio Dispatch Truck MANCHESTER READY MIX CO. 215 S. MALCOLM

Mix Concrete PHONE MANCHESTER G.A. 8-5153 Radio Dispatch Truck MANCHESTER READY MIX CO. 215 S. MALCOLM

Ready Mix Concrete PHONE MANCHESTER G.A. 8-5153 Radio Dispatch Truck MANCHESTER READY MIX CO. 215 S. MALCOLM

Mix Concrete PHONE MANCHESTER G.A. 8-5153 Radio Dispatch Truck MANCHESTER READY MIX CO. 215 S. MALCOLM

Ready Mix Concrete PHONE MANCHESTER G.A. 8-5153 Radio Dispatch Truck MANCHESTER READY MIX CO. 215 S. MALCOLM

Mix Concrete PHONE MANCHESTER G.A. 8-5153 Radio Dispatch Truck MANCHESTER READY MIX CO. 215 S. MALCOLM

Ready Mix Concrete PHONE MANCHESTER G.A. 8-5153 Radio Dispatch Truck MANCHESTER READY MIX CO. 215 S. MALCOLM

Mix Concrete PHONE MANCHESTER G.A. 8-5153 Radio Dispatch Truck MANCHESTER READY MIX CO. 215 S. MALCOLM

Ready Mix Concrete PHONE MANCHESTER G.A. 8-5153 Radio Dispatch Truck MANCHESTER READY MIX CO. 215 S. MALCOLM

Mix Concrete PHONE MANCHESTER G.A. 8-5153 Radio Dispatch Truck MANCHESTER READY MIX CO. 215 S. MALCOLM

Ready Mix Concrete PHONE MANCHESTER G.A. 8-5153 Radio Dispatch Truck MANCHESTER READY MIX CO. 215 S. MALCOLM

Citizens Group Outlines Plans

During the next five years, Manchester High School enrollment will grow from 217 to 260, while elementary enrollment will increase from 735 to 797.

Personal Notes

Mr. and Mrs. Paul Pelkamski celebrated Friday after Thanksgiving with her sister and husband, Mr. and Mrs. Oscar Noll at Hamlin Harbor.

Service Notes

Mr. and Mrs. Paul Pelkamski celebrated Friday after Thanksgiving with her sister and husband, Mr. and Mrs. Oscar Noll at Hamlin Harbor.

Brown Swiss News Notes

A Brown Swiss breakfast, refreshments, no table recently held at the Park Hotel, 404-404 1/2 E. Michigan.

ESTABLISHED IN MANCHESTER SINCE 1869

Observes Eightieth Birthday Friends, relatives and neighbors are invited to help Mrs. ...

THE MANCHESTER ENTERPRISE A WEEKLY NEWSPAPER IN ITS 90th YEAR—DEVOTED TO PUBLIC SERVICE IN THE INTEREST OF A PROGRESSIVE MANCHESTER

Washtenaw County Police Campaign Charted; Volunteers Being Recruited

Santa Claus is coming to town Saturday, December 17 at the high school at 7:30 p. m. at which time the group will visit all schools of the area and have a business meeting.

Santa's Due In Manchester December 22

Santa Claus is coming to town Saturday, December 17 at the high school at 7:30 p. m. at which time the group will visit all schools of the area and have a business meeting.

Manchester Man Beaten In Detroit

Henry R. Keller, 34, of Manchester, has been released from a Detroit hospital where he was taken Wednesday night with injuries suffered when he was beaten by two companions in a hotel.

March Of Dimes Goal Is \$46,900 For Washtenaw

The Washtenaw County Board of the National Foundation for Infantile Paralysis has approved a 1937 March of Dimes campaign goal of \$46,900.

Planning Group Lists Aides; Meet Monday

The 1937-38 Citizens Planning committee will hold a general meeting Monday, December 17 at the high school at 7:30 p. m.

FHA Girls Help At Installation

The F. H. A. girls of Manchester are very busy at this time of the year and will be assisting in the installation of the new officers of the group.

Mrs. Schoenhals Buried At West

Funeral services were held Wednesday for Mrs. Elizabeth Schoenhals, 70, who died Sunday at the St. Joseph's Mercy Hospital, Ann Arbor where she was taken Saturday.

Little Pat Roesch Breaks Leg At Play

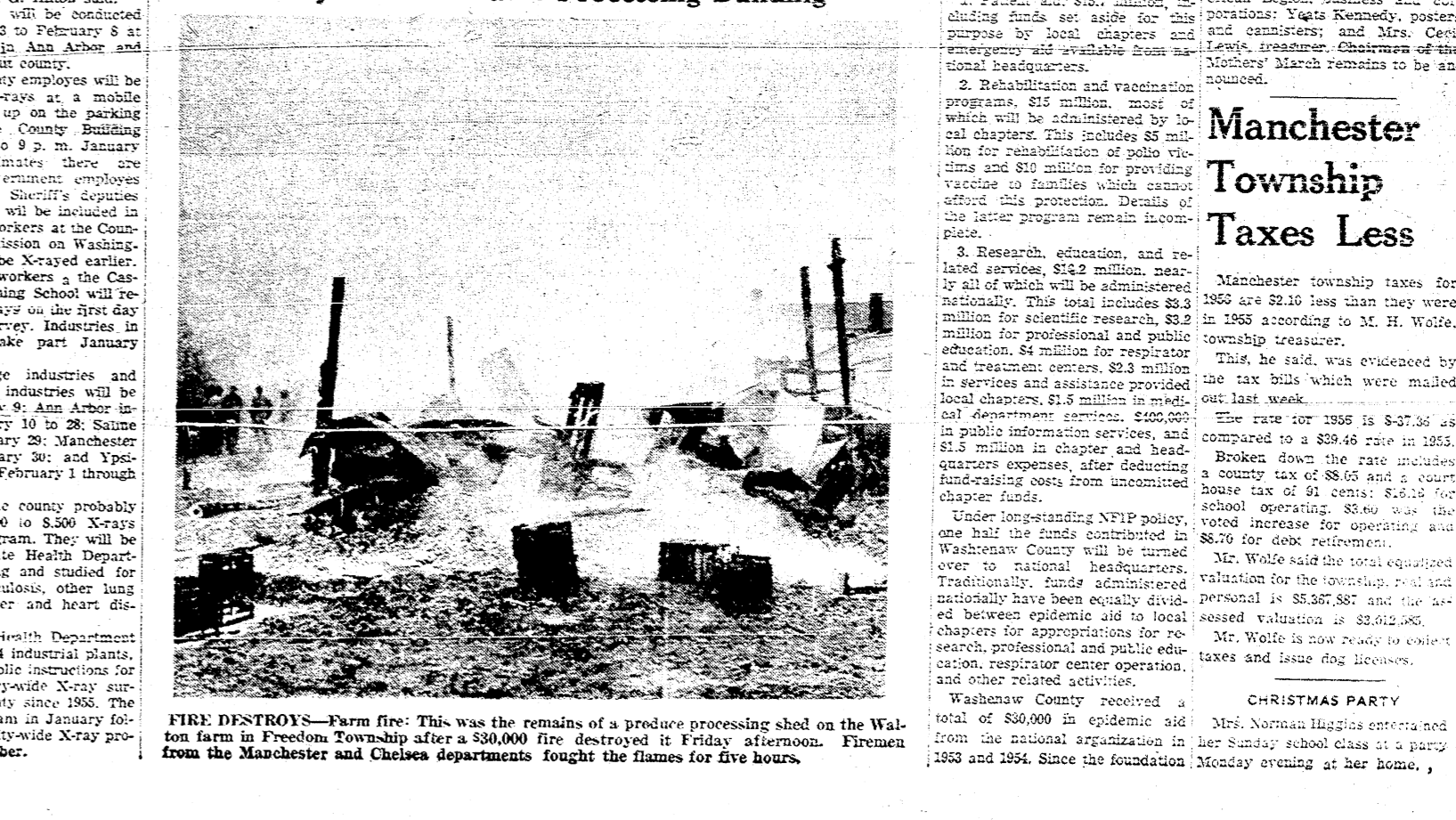
Pat Roesch, 4 1/2 year-old son of Mr. and Mrs. Stanton Roesch will be spending his Christmas in a cast.

County Wide X-Ray Drive Is Planned

Washtenaw County workers, Ann Arbor City and inmates of Southern Michigan Prison Camp will be participating in a county-wide X-ray program.

Fire Destroys Walton Farm Processing Building

A roaring fire, which 24 firemen fought for more than five hours Friday, destroyed a produce processing shed on the Walton farm in Freedom Township.



FIRE DESTROYS—Farm fire: This was the remains of a produce processing shed on the Walton farm in Freedom Township after a \$30,000 fire destroyed it Friday afternoon. Firemen from the Manchester and Chelsea departments fought the flames for five hours.

Catechism Class Plans Party

The Evangelical catechism class has planned their Christmas party for December 19 from 7:30 to 9:30 p. m.

Titanic Widow

John P. Murphy, son of the late Titanic widow, will be 105 next birthday. Her husband, Arthur W. Newell, was the captain of the ship.

Do Mailing Early Help Ease Postal Load At Christmas

Point out to the need for your cooperation on the 1937 "Mail Early For Christmas" Campaign. The program is being conducted by the Post Office.

Merry Christmas Shopping or Oh! My Achin' Feet!

In case you haven't realized, that magic season's here again! The program will be conducted from January 3 to February 8 at the industries in Ann Arbor and Ypsilanti and out county.

Advertisement for Anderson's Saline featuring a large 'CHRISTMAS GIFTS' graphic and a list of products including Butter, Corn, Peas, Sausage, Pork Roast, and MINGUS MARKET Groceries.

FOR WANT ADS PHONE GARDEN 8-3521 PRICE 5 CENTS