

### EUB Church To See Movie God in Nature

A special program of pictures for the EUB Church will be shown at the home of Mrs. J. A. Swanson, 1200 N. 1st St., on Sunday, September 24, at 2 p. m. The pictures will be "God in Nature," a series of 12 pictures showing the beauty of the natural world. The pictures will be shown on a screen in the living room. Admission free. Refreshments will be served. The pictures will be shown on a screen in the living room. Admission free. Refreshments will be served.

### Boy Scouts Need Stoves

The Boy Scouts of America are in need of stoves for their camp. They are looking for stoves that are durable and easy to use. If you have a stove that you no longer use, please contact the Scoutmaster at 1200 N. 1st St. for more information.

### Entertained

Mrs. J. A. Swanson entertained a group of friends at her home on Sunday. The party was a success and everyone enjoyed the evening.

### CARD PARTY

St. Mary's Hall  
THURSDAY  
September 29  
8 P. M.

## Save

### ON THIS NEW-FULLY AUTOMATIC

## G-E RANGE

- ★ PUSH BUTTONS
- ★ BIG OVEN
- ★ HI-SPEED CALOR'D UNITS
- ★ 2-EXTRA FEATURES
- ★ AUTOMATIC OVEN TIMER
- ★ FLUORESCENT LAMP



### LIMITED QUANTITIES! COME IN TODAY

Be Modern  
Cook Electrically!

### L. V. Kirk

Phone GA 8-3701 Manchester, Michigan  
ELECTRIC WIRING & SUPPLIES  
Youngstown - G. E. - Hoover Dealer

## Sunday Church Services

**SHARON CHURCH**  
Evangelical United Brethren  
Rev. William Schaefer, pastor  
Sunday, September 24, 10:00 a. m.  
Subject: "The Call of the Ministry"

**MANCHESTER METHODIST CHURCH**  
Rev. J. A. Swanson, pastor  
Sunday, September 24, 10:00 a. m.  
Subject: "The Call of the Ministry"

**ST. MARY'S CATHOLIC CHURCH**  
Rev. William Schaefer, pastor  
Sunday, September 24, 10:00 a. m.  
Subject: "The Call of the Ministry"

**MANCHESTER METHODIST CHURCH**  
Rev. J. A. Swanson, pastor  
Sunday, September 24, 10:00 a. m.  
Subject: "The Call of the Ministry"

## Personal Notes

**Births**  
Born to Mr. and Mrs. James Phillips, a son, James Phillips, on Sunday, September 24, at St. Mary's Hospital, Manchester, Michigan. Weight, 10 lbs. Length, 20 inches. Head, 13 inches. Chest, 12 inches. Arm, 10 inches. Leg, 10 inches. Feet, 10 inches. The baby is healthy and active.

**Deaths**  
Died on Sunday, September 24, at his home, 1200 N. 1st St., Mr. J. A. Swanson, aged 65 years. He was a member of the Manchester Methodist Church. Burial in the cemetery on Monday, September 25, at 10:00 a. m.

## Olsens Initiated Into OES Chapter

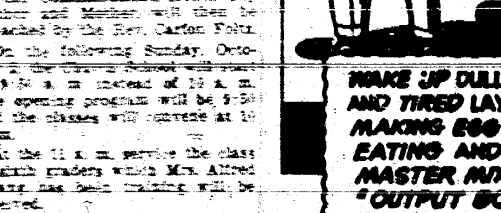
At a special meeting of the Order of Eastern Stars held Friday night, the Olsens were initiated into the Order. The ceremony was held at the home of Mrs. O. Olsen. The new members are Mr. and Mrs. O. Olsen.

## Mom's Entertain

Mrs. J. A. Swanson entertained a group of friends at her home on Sunday. The party was a success and everyone enjoyed the evening.

## Methodist Rally Day Sunday

The Methodist Church will hold a Rally Day on Sunday, September 24. The program will include a special service at 10:00 a. m. and a social hour at 11:00 a. m. The church is looking for a large attendance.



### YOU NEED MASTER MIX EGGLAC PELLETS!

MAKE UP ALL APPOINTMENTS OF BLOW AND TIRE TUBS FOR A MONEY-MAKING BUSINESS. KEEP 'EM EATING AND KEEP 'EM LAYING WITH MASTER MIX EGGLAC PELLETS, THE "OUTPUT BOOSTER!"

### E. G. MANN & SONS

Manchester - Bridgewater

### You'll be WHISTLING A HAPPY TUNE with these FINE FOODS

GOLDEN RIPE BANANAS	NORTHERN Tissue	DEL MONTE Pumpkin
2 LBS. 29c	4 FOR 29c	2 FOR 33c
2 LBS. 29c	CAMPBELL'S 1 LB. CAN	HUNT'S SLICED OR HALVES
2 FOR 41c	2 FOR 27c	2 FOR 55c
2 FOR 41c	Breakfast Maid Coffee	Farmer Peet's PICNIC HAM
2 FOR 39c	69c lb.	39c
	Cherries 2 FOR 39c	
	Cake Flour 33c	

### MINGUS MARKET

PURE FOOD STORE  
BEER - WINE - FRESH FRUITS - VEGETABLES - MEATS - GROCERIES  
WE BUY EGGS - (Open Wed-Fri-Sat. Evenings) - PHONE GA 8-4821  
Member of M.M.A.

## Man-hunter Miss entertained

Mrs. J. A. Swanson entertained a group of friends at her home on Sunday. The party was a success and everyone enjoyed the evening.

## Silver Anniversary

Mrs. J. A. Swanson celebrated her silver anniversary on Sunday, September 24. She was born on September 24, 1883.

## Manchester High Elects Officers

The following officers have been elected by the classes at the Manchester High School for the coming year. The officers are: President, Jack Elkin; Vice-President, James Kinsey; Secretary, James Kinsey; Treasurer, James Kinsey.

### Marine Corps Enlistments

The 6th Special Infantry Company, U. S. Marine Corps, is accepting enlistments for the coming year. The company is located at the Marine Corps Recruit Depot, San Diego, California. For more information, contact the company at the depot.

## Dance Classes Start Oct. 1

Dance classes will begin on October 1 at the Manchester High School. The classes will be held in the gymnasium. The classes are for both men and women. The classes will be held from 7:00 p. m. to 9:00 p. m.

## Methodist Church Names Officers

The Methodist Church has elected its officers for the coming year. The officers are: President, J. A. Swanson; Vice-President, J. A. Swanson; Secretary, J. A. Swanson; Treasurer, J. A. Swanson.

## Farmers To Air Views At Saline Forum Monday

Farmers will air their views on agricultural issues at a forum held in Saline on Monday. The forum will be held at the Saline High School. The forum will be held from 7:00 p. m. to 9:00 p. m.

# THE MANCHESTER ENTERPRISE

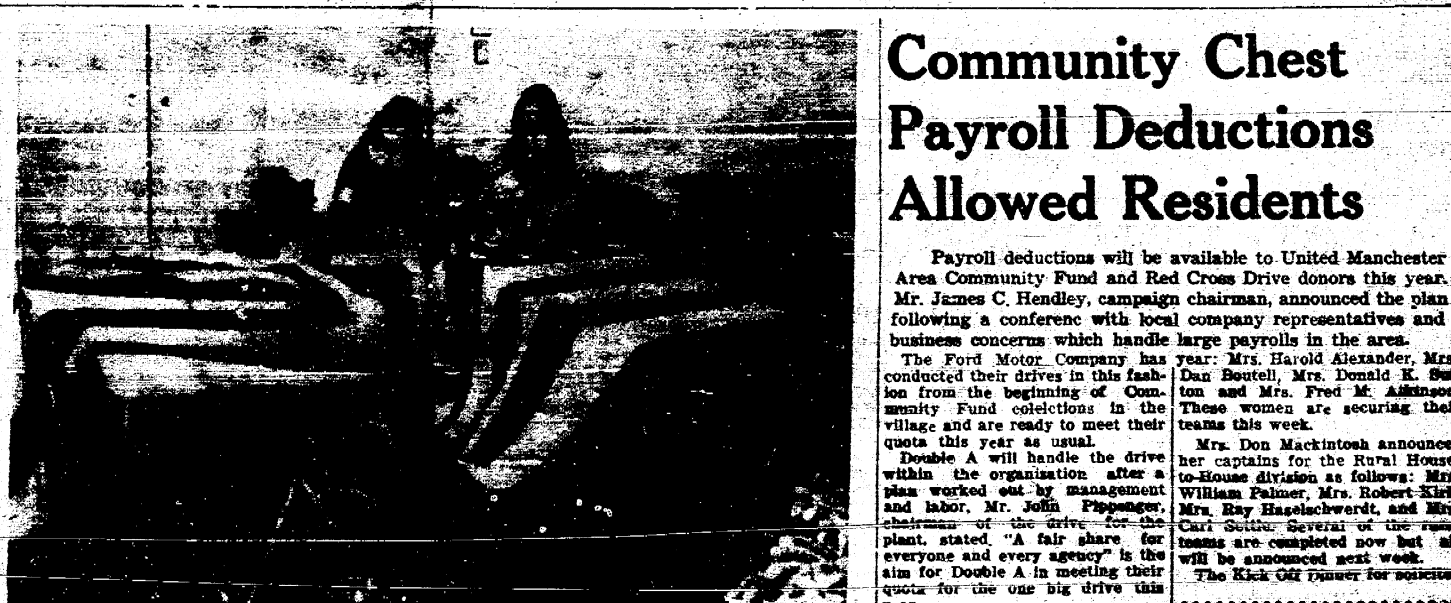
A WEEKLY NEWSPAPER IN ITS 80th YEAR—DEVOTED TO PUBLIC SERVICE IN THE INTEREST OF A PROGRESSIVE MANCHESTER

MEMBER: Manchester Merchants Association  
MANCHESTER, MICHIGAN, THURSDAY, SEPTEMBER 29, 1933  
PRICE 5 CENTS

## High School Building Accepted At Dedication

Fair officials met at the school for their first meeting since the Community Fair. It was generally agreed that this was the largest fair in the history of Manchester, but at the present time it is impossible to give a complete story of the finances of the fair.

**Fair Officials Hold First Meet Since Fair Event**  
Fair officials met at the school for their first meeting since the Community Fair. It was generally agreed that this was the largest fair in the history of Manchester, but at the present time it is impossible to give a complete story of the finances of the fair.



MODERN BETSY ROSS' prepare for high school dedication ceremonies. Much preparation by many people was on the agenda for the biggest event of the school this Wednesday. Joan Hand (l) and her twin sister Janet (r) sit on the new flag that is to be used in the school gymnasium. The flag was presented as a donation by the Emil Jacob Post, American Legion.

## Community Chest Payroll Deductions Allowed Residents

Payroll deductions will be available to United Manchester Area Community Chest and Red Cross Drive donors this year. Mr. James C. Hendley, campaign chairman, announced the plan following a conference with local company representatives and business concerns which handle large payrolls in the area.

## Legion Auxiliary Locker Owners Entertains State Hospital Veterans At Convention

The Manchester Legion Auxiliary entertained the Veterans Ward at the "Veterans State Hospital" convention at the Manchester Hotel. The convention was held on Sunday, September 24. The auxiliary members were very helpful in making the convention a success.

## Marine Corps Enlistments

The 6th Special Infantry Company, U. S. Marine Corps, is accepting enlistments for the coming year. The company is located at the Marine Corps Recruit Depot, San Diego, California. For more information, contact the company at the depot.

## Pres. - Sec. Of M. E. A. Hosts At Opening Meet

The Michigan Education Association regional meeting was held at the civic auditorium with 120 delegates in attendance. The meeting was held on Sunday, September 24. The meeting was a success and everyone enjoyed the evening.

## Coming Events

Public party at St. Mary's hall Thursday, Sept. 29 at 8 p. m. Births: Born to Mr. and Mrs. Kenneth Keener of 10100 Hogan Rd. a seven pound seven ounce daughter, Doreen Marie, on Sunday, September 24, at St. Mary's Hospital.

## WHERE 11 CHILDREN WERE KILLED IN SCHOOL BUS



SCHOOL BUS lies overturned and freight train is in background at a railroad trolley, overturned by the careening bus. The Southern crossing in Spring City, Tenn., where the bus, loaded with about 15 children, struck the freight train, killing 11 children. All 40 children, failed to make it all the way across. In foreground is a school bus not killed but injured.

### Concert Season Opens in Ypsi

The Ypsilanti Community Orchestra, under the direction of its conductor, Dr. J. H. ...



### Ag Secretary Benson Promises Price Ease

Agriculture Secretary Dan Benson said today that while ...

### October Will Be Month of Moons Says University of Michigan Prof

October will be a month of moons, according to a professor at the University of Michigan ...

### Lucky Winners in Treasure Chest

Three winners were announced in the recent drawing of the ...



### Farmers Not Concerned Over Poor Forage Crops

Some farmers were described today as too complacent about the fact that they're getting poor stands of forage.

Other D-Riville research would seem to indicate that milk cows, if left to range freely, will consume more than enough high-quality pasture than they need for maximum production.

### County Road Commissioners Discuss Traffic

County road commissioners met today to discuss traffic problems in various parts of the county.

### Women Train For Entrepreneurial Work

A group of women are participating in a training program designed to help them start their own businesses.

### Miss Joan Alice Walz In Church Ceremony; Weds Mr. Daniel Goodman, Jr.

Miss Joan Alice Walz was married in a church ceremony to Mr. Daniel Goodman, Jr. on Wednesday.

### Read Manchester Classified

WE SELL  
CARPET  
NOT CONVERSATION  
CARMAN'S  
FLOOR COVERINGS

### Man Is The Word At AG Dept. Meet

A meeting of the Agricultural Extension Council was held today with the theme 'Man is the Word'.

### Personal Notes

Mr. and Mrs. George Billings of Sterling, Ill., arrive in Ypsilanti for a visit.

### Cinema Notes

The Alan Ladd picture 'The Longest Day' is being shown at the Ypsilanti cinema.

### Monroe School To Offer Course In Lip Reading

A course in lip reading for adults was opened on Wednesday at the Monroe School.

### Explorer Scouts Help Under At Ann Arbor Games

Explorer Scouts from Ypsilanti helped under the Ann Arbor Games.

### Women Train For Entrepreneurial Work

A group of women are participating in a training program designed to help them start their own businesses.

### Personal Notes

Mr. and Mrs. Alvin Vaie of Chelsea visited their daughter and family in Ypsilanti.

### Cinema Notes

The Alan Ladd picture 'The Longest Day' is being shown at the Ypsilanti cinema.

### County Road Commissioners Discuss Traffic

County road commissioners met today to discuss traffic problems in various parts of the county.

### Women Train For Entrepreneurial Work

A group of women are participating in a training program designed to help them start their own businesses.

### Personal Notes

Mr. and Mrs. Alvin Vaie of Chelsea visited their daughter and family in Ypsilanti.

### Cinema Notes

The Alan Ladd picture 'The Longest Day' is being shown at the Ypsilanti cinema.

Shirts  
Carl M. Schaible, Inc.  
100 N. Main St., Ann Arbor, Mich.

Let's take a walk around the NEW '56 FORD!  
Carl M. Schaible, Inc.  
100 N. Main St., Ann Arbor, Mich.

Save Your ROOF! ACT NOW! FREE SAMPLE  
ASBESTOLITE  
THIS FREE SAMPLE WILL PROVE ASBESTOLITE WILL SAVE YOUR ROOF!

Look Smart, Slim  
9003 SIZES  
Sees-easy jumper and companion blouse—your versatile new fashions!



### Michigan Up On Beer Sales

Michigan made 1956 among the nation's school system, but third among the nation's beer consumers, according to a survey by the Michigan State Board of Control.

### Mary Kensler Weds Harry Johnson In Church Ceremony

Miss Mary Kensler and Harry Johnson were united in marriage in the Emanuel Evangelical Church at 4:30 p. m. Sunday, September 24, with Rev. Carl H. Tiet reading the double ring service before an altar banked with white gladioli and chrysanthemums.

### Miss Joan Alice Walz In Church Ceremony; Weds Mr. Daniel Goodman, Jr.

Miss Joan Alice Walz was married in a church ceremony to Mr. Daniel Goodman, Jr. on Wednesday.

### R. C. Extension Elects Officers

The River Community Extension met Tuesday at the home of Mrs. Harold Steinway with 14 present.

### WE INVITE YOU To The Showing Of The 1956 MERCURY

In Our Showrooms in Clinton All Day and Evening Thursday, September 29 Come and Enjoy An Hour with Us and See What A Brilliant and Exciting New Car The Mercury is for '56. A Cordial Welcome George Underwood Lincoln - Mercury TECUMSEH RD., CLINTON OPEN UNTIL 9:00 Coffee and Doughnuts

### Monroe School To Offer Course In Lip Reading

A course in lip reading for adults was opened on Wednesday at the Monroe School.

### Civil Service Announce Exams

The Michigan Civil Service Commission is announcing today that several vacancies for Fruit and Vegetable Inspectors exist with the state. These are permanent positions that pay \$65.80 to \$74.60 weekly.

### Peanut Crop On Decrease

The U. S. Agriculture Department reports that of-gram supplies of peanuts of Aug. 31 totaled 210 million pounds, or nine per cent less than the 222 million pounds held in similar position a year earlier.

THIS IS THE FOOD YOU NEED AT EVERY MEAL!  
GREENMAIL BREAD  
Smith Floor Coverings  
LINOLEUM and TILE  
205 N. Main St. Phone 5-6240 or 5-3321 Ann Arbor  
CARPETS and RUGS  
207 E. Washington St. Phone 5-3356 Ann Arbor  
Open Monday Evenings

The Manchester Enterprise ESTABLISHED 1867

MEMBER OF THE MICHIGAN PRESS ASSOCIATION

Published as second class matter at the Post Office at Manchester, Michigan, under the Act of March 3, 1879.

Subscription rates: \$3.00 per year; \$5.00 per year outside of Michigan. Single copies 10 cents.

Advertising Representatives: Manchester Press Service & Weekly Newspaper Representatives, Inc.

Classification: Second Class, Post Office No. 256, Manchester, Michigan.

"Good Old Days" of Stock Market Appear to Return

The "good old days" of the stock market have returned, according to many observers. The Wall Street market has shown a marked recovery since the end of the summer.

U.S., British, French Foreign Ministers Work Out Strategy

Western strategy for the October conference of foreign ministers at Geneva will be hammered out by U.S., British and French foreign ministers.

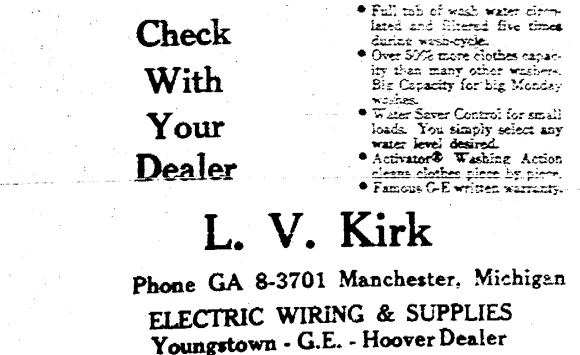
Rev. Rest In Demand

The three regions of the North Western Synod of the Evangelical and Reformed Church will have their next speaker, the Rev. Karl H. A. Rest, pastor of Emmanuel church here.

NEW SUPPLY OF GRAIN SORGHUMS

A new day is dawning for grain sorghums. That's the highly optimistic expression used by the agriculture department today to announce the fact that limited quantities of hybrid grain sorghum seed are expected to be available to growers next spring.

MOON AND SIXPENCE



The Manchester Enterprise ESTABLISHED 1867

MEMBER OF THE MICHIGAN PRESS ASSOCIATION

Published as second class matter at the Post Office at Manchester, Michigan, under the Act of March 3, 1879.

Subscription rates: \$3.00 per year; \$5.00 per year outside of Michigan. Single copies 10 cents.

Advertising Representatives: Manchester Press Service & Weekly Newspaper Representatives, Inc.

Classification: Second Class, Post Office No. 256, Manchester, Michigan.

"Good Old Days" of Stock Market Appear to Return

The "good old days" of the stock market have returned, according to many observers. The Wall Street market has shown a marked recovery since the end of the summer.

U.S., British, French Foreign Ministers Work Out Strategy

Western strategy for the October conference of foreign ministers at Geneva will be hammered out by U.S., British and French foreign ministers.

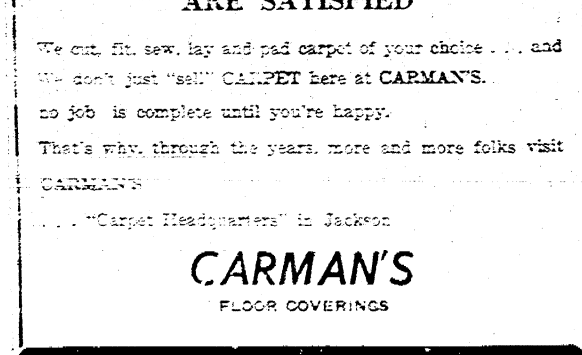
Rev. Rest In Demand

The three regions of the North Western Synod of the Evangelical and Reformed Church will have their next speaker, the Rev. Karl H. A. Rest, pastor of Emmanuel church here.

NEW SUPPLY OF GRAIN SORGHUMS

A new day is dawning for grain sorghums. That's the highly optimistic expression used by the agriculture department today to announce the fact that limited quantities of hybrid grain sorghum seed are expected to be available to growers next spring.

MOON AND SIXPENCE



The Manchester Enterprise ESTABLISHED 1867

MEMBER OF THE MICHIGAN PRESS ASSOCIATION

Published as second class matter at the Post Office at Manchester, Michigan, under the Act of March 3, 1879.

Subscription rates: \$3.00 per year; \$5.00 per year outside of Michigan. Single copies 10 cents.

Advertising Representatives: Manchester Press Service & Weekly Newspaper Representatives, Inc.

Classification: Second Class, Post Office No. 256, Manchester, Michigan.

"Good Old Days" of Stock Market Appear to Return

The "good old days" of the stock market have returned, according to many observers. The Wall Street market has shown a marked recovery since the end of the summer.

U.S., British, French Foreign Ministers Work Out Strategy

Western strategy for the October conference of foreign ministers at Geneva will be hammered out by U.S., British and French foreign ministers.

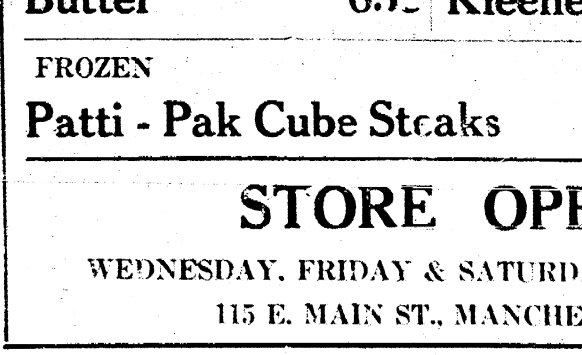
Rev. Rest In Demand

The three regions of the North Western Synod of the Evangelical and Reformed Church will have their next speaker, the Rev. Karl H. A. Rest, pastor of Emmanuel church here.

NEW SUPPLY OF GRAIN SORGHUMS

A new day is dawning for grain sorghums. That's the highly optimistic expression used by the agriculture department today to announce the fact that limited quantities of hybrid grain sorghum seed are expected to be available to growers next spring.

MOON AND SIXPENCE



The Manchester Enterprise ESTABLISHED 1867

MEMBER OF THE MICHIGAN PRESS ASSOCIATION

Published as second class matter at the Post Office at Manchester, Michigan, under the Act of March 3, 1879.

Subscription rates: \$3.00 per year; \$5.00 per year outside of Michigan. Single copies 10 cents.

Advertising Representatives: Manchester Press Service & Weekly Newspaper Representatives, Inc.

Classification: Second Class, Post Office No. 256, Manchester, Michigan.

"Good Old Days" of Stock Market Appear to Return

The "good old days" of the stock market have returned, according to many observers. The Wall Street market has shown a marked recovery since the end of the summer.

U.S., British, French Foreign Ministers Work Out Strategy

Western strategy for the October conference of foreign ministers at Geneva will be hammered out by U.S., British and French foreign ministers.

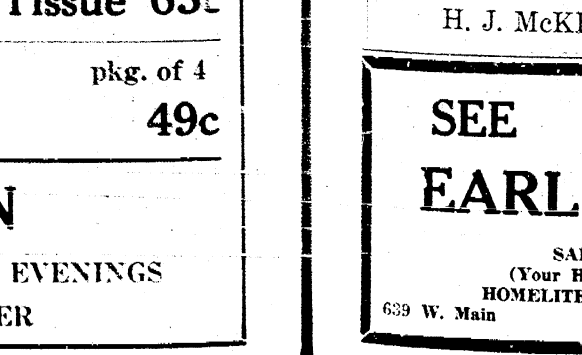
Rev. Rest In Demand

The three regions of the North Western Synod of the Evangelical and Reformed Church will have their next speaker, the Rev. Karl H. A. Rest, pastor of Emmanuel church here.

NEW SUPPLY OF GRAIN SORGHUMS

A new day is dawning for grain sorghums. That's the highly optimistic expression used by the agriculture department today to announce the fact that limited quantities of hybrid grain sorghum seed are expected to be available to growers next spring.

MOON AND SIXPENCE



The Manchester Enterprise ESTABLISHED 1867

MEMBER OF THE MICHIGAN PRESS ASSOCIATION

Published as second class matter at the Post Office at Manchester, Michigan, under the Act of March 3, 1879.

Subscription rates: \$3.00 per year; \$5.00 per year outside of Michigan. Single copies 10 cents.

Advertising Representatives: Manchester Press Service & Weekly Newspaper Representatives, Inc.

Classification: Second Class, Post Office No. 256, Manchester, Michigan.

"Good Old Days" of Stock Market Appear to Return

The "good old days" of the stock market have returned, according to many observers. The Wall Street market has shown a marked recovery since the end of the summer.

U.S., British, French Foreign Ministers Work Out Strategy

Western strategy for the October conference of foreign ministers at Geneva will be hammered out by U.S., British and French foreign ministers.

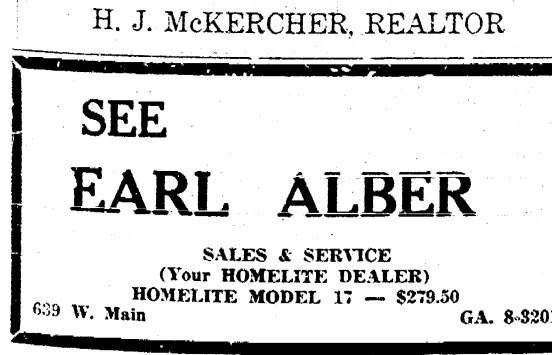
Rev. Rest In Demand

The three regions of the North Western Synod of the Evangelical and Reformed Church will have their next speaker, the Rev. Karl H. A. Rest, pastor of Emmanuel church here.

NEW SUPPLY OF GRAIN SORGHUMS

A new day is dawning for grain sorghums. That's the highly optimistic expression used by the agriculture department today to announce the fact that limited quantities of hybrid grain sorghum seed are expected to be available to growers next spring.

MOON AND SIXPENCE



The Manchester Enterprise ESTABLISHED 1867

MEMBER OF THE MICHIGAN PRESS ASSOCIATION

Published as second class matter at the Post Office at Manchester, Michigan, under the Act of March 3, 1879.

Subscription rates: \$3.00 per year; \$5.00 per year outside of Michigan. Single copies 10 cents.

Advertising Representatives: Manchester Press Service & Weekly Newspaper Representatives, Inc.

Classification: Second Class, Post Office No. 256, Manchester, Michigan.

"Good Old Days" of Stock Market Appear to Return

The "good old days" of the stock market have returned, according to many observers. The Wall Street market has shown a marked recovery since the end of the summer.

U.S., British, French Foreign Ministers Work Out Strategy

Western strategy for the October conference of foreign ministers at Geneva will be hammered out by U.S., British and French foreign ministers.

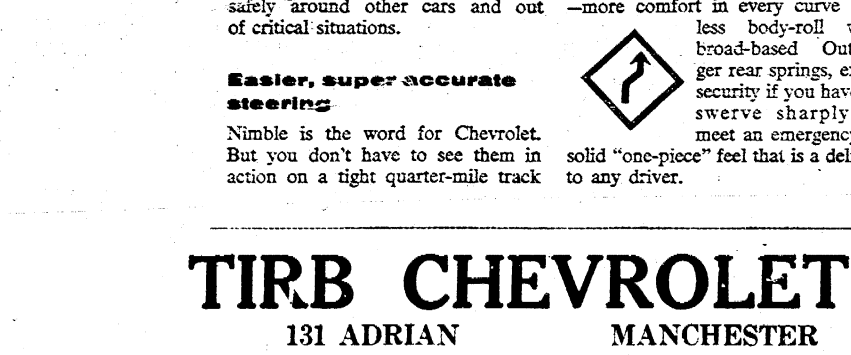
Rev. Rest In Demand

The three regions of the North Western Synod of the Evangelical and Reformed Church will have their next speaker, the Rev. Karl H. A. Rest, pastor of Emmanuel church here.

NEW SUPPLY OF GRAIN SORGHUMS

A new day is dawning for grain sorghums. That's the highly optimistic expression used by the agriculture department today to announce the fact that limited quantities of hybrid grain sorghum seed are expected to be available to growers next spring.

MOON AND SIXPENCE



The Manchester Enterprise ESTABLISHED 1867

MEMBER OF THE MICHIGAN PRESS ASSOCIATION

Published as second class matter at the Post Office at Manchester, Michigan, under the Act of March 3, 1879.

Subscription rates: \$3.00 per year; \$5.00 per year outside of Michigan. Single copies 10 cents.

Advertising Representatives: Manchester Press Service & Weekly Newspaper Representatives, Inc.

Classification: Second Class, Post Office No. 256, Manchester, Michigan.

"Good Old Days" of Stock Market Appear to Return

The "good old days" of the stock market have returned, according to many observers. The Wall Street market has shown a marked recovery since the end of the summer.

U.S., British, French Foreign Ministers Work Out Strategy

Western strategy for the October conference of foreign ministers at Geneva will be hammered out by U.S., British and French foreign ministers.

Rev. Rest In Demand

The three regions of the North Western Synod of the Evangelical and Reformed Church will have their next speaker, the Rev. Karl H. A. Rest, pastor of Emmanuel church here.

NEW SUPPLY OF GRAIN SORGHUMS

A new day is dawning for grain sorghums. That's the highly optimistic expression used by the agriculture department today to announce the fact that limited quantities of hybrid grain sorghum seed are expected to be available to growers next spring.

MOON AND SIXPENCE



Advertisement for G-E AUTOMATIC WASHER with FILTER-FLO WASHING SYSTEM. Includes text: 'Cleans and recleans the wash water to give you cleaner clothes' and 'Check With Your Dealer'.

Advertisement for SUPER PLANARIN for children and adults. Includes text: 'TRY OUR NEW RENAL Super Planarin for children and adults' and 'OUR CARPET CUSTOMERS ARE SATISFIED'.

Advertisement for Eisenhauer Food Market. Includes text: 'TALK ABOUT FOOD VALUES look at these money-savers' and a list of products like Lunch Bags, Sandwich Bags, Instant Coffee, etc.

Advertisement for SEE EARL ALBER. Includes text: 'ANNOUNCING... A 20 HOUSE PROJECT NEAR NEW CONSOLIDATED SCHOOL IN SALINE MODEL HOMES NOW OPEN'.

Advertisement for TIRB CHEVROLET COMPANY. Includes text: 'The safer car wins... and Chevrolet is the big winner' and 'Faster acceleration means safer passing'.

Advertisement for RReady Mix Concrete. Includes text: 'RReady Mix Concrete' and 'PHONE MANCHESTER GA. 8-5453'.

CLASSIFIED WANT ADS For Rent, For Sale, Wanted, Real Estate, Miscellaneous. Includes various listings for properties and services.

Business and Professional DIRECTORY. Includes listings for insurance agencies, plumbers, dentists, and other professionals.

Legal notices and announcements. Includes text: 'STATE OF MICHIGAN No. 41823' and 'The Probate Court for the County of Washtenaw'.

Legal notices and announcements. Includes text: 'STATE OF MICHIGAN No. 41823' and 'The Probate Court for the County of Washtenaw'.

Legal notices and announcements. Includes text: 'STATE OF MICHIGAN No. 41823' and 'The Probate Court for the County of Washtenaw'.

Legal notices and announcements. Includes text: 'STATE OF MICHIGAN No. 41823' and 'The Probate Court for the County of Washtenaw'.



THIS HICKORY HORSEHIDE...  
The hickory horsehide is a...  
It is made of the finest...  
and is guaranteed to last...  
for many years.

Lightest...  
The hickory horsehide is...  
the lightest and most...  
durable of all horsehides.



MICHIGAN OUTDOORS...  
Michigan Outdoors is...  
the best source for...  
outdoor equipment.

Local Men Store...  
The Local Men Store...  
is the best place to...  
buy men's clothing.

SPORTSMAN'S DIGEST...  
The Sportsman's Digest...  
is a must for every...  
sportsman.

Local Men Store...  
The Local Men Store...  
is the best place to...  
buy men's clothing.

Local Men Store...  
The Local Men Store...  
is the best place to...  
buy men's clothing.

Local Men Store...  
The Local Men Store...  
is the best place to...  
buy men's clothing.

Local Men Store...  
The Local Men Store...  
is the best place to...  
buy men's clothing.

Local Men Store...  
The Local Men Store...  
is the best place to...  
buy men's clothing.

Local Men Store...  
The Local Men Store...  
is the best place to...  
buy men's clothing.

Local Men Store...  
The Local Men Store...  
is the best place to...  
buy men's clothing.

# Dutchmen Drive To 12-7 Victory

ON PRO CIRCUIT NOW •• By Alan Mavor



MANCHESTER FLYING DUTCHMEN...  
The Manchester Flying Dutchmen...  
are playing on the pro circuit...

## League Standings

Team	W	L	Pct.
Manchester	12	7	.632
Boysville	10	9	.526
Sharon	8	11	.421
Brokaw	7	12	.368
Deerfield	6	13	.316
Windsor	5	14	.263
Windsor	4	15	.211
Windsor	3	16	.158
Windsor	2	17	.105
Windsor	1	18	.053

## Manchester Womens League

In Full Swing; Ladies Bowling High Scores

Team	W	L	Pct.
Manchester	10	5	.667
Boysville	8	7	.533
Sharon	6	9	.400
Brokaw	5	10	.333
Deerfield	4	11	.267
Windsor	3	12	.200
Windsor	2	13	.133
Windsor	1	14	.067

Patrons Year Local Merchants

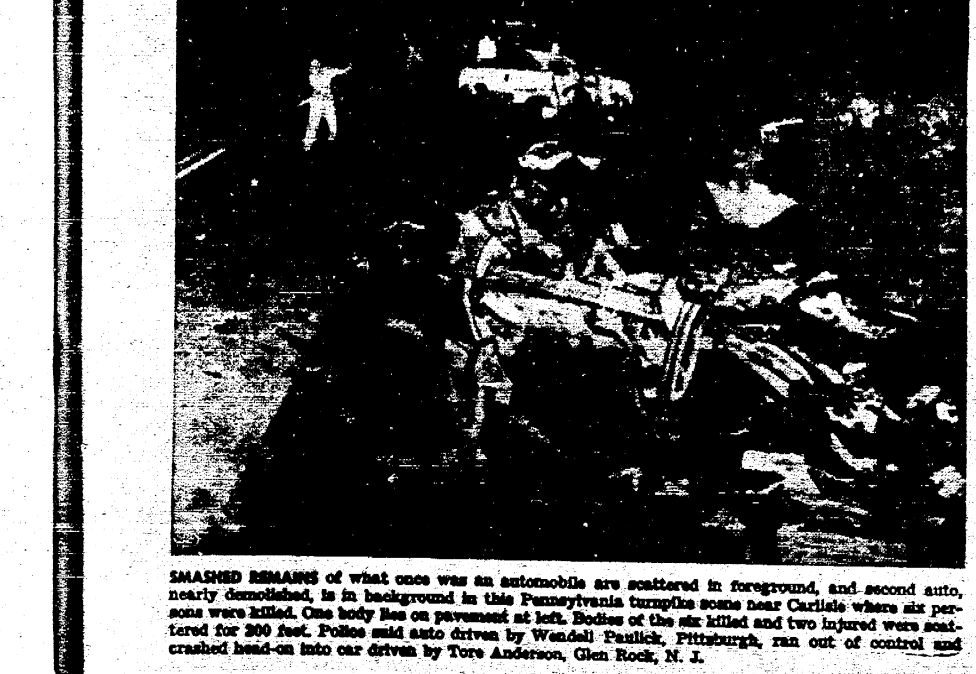
# Better get going Fall is here

Insulate • Build • Alter • Repair Now!

## Schaffer LUMBER CO.

GA. 8-2411

# CRASHED HEAD-ON, SIX KILLED ON TURNPIKE



CRASHED REMAINS of what once was an automobile...  
The wreckage of a car...  
was found on the turnpike...

Personal Notes  
Mr. and Mrs. Michael Swiatk...  
Mr. and Mrs. Walter Beuerle...  
Mr. and Mrs. Frank Hough...

Personal Notes  
Mr. and Mrs. Ernest J. Frantz...  
Mr. and Mrs. Harold Townsend...  
Mr. and Mrs. Otto Kulenkamp...

Personal Notes  
Mr. and Mrs. Oscar Behnhammer...  
Mr. and Mrs. James Pratt...  
Mr. and Mrs. Dean Kulenkamp...

Personal Notes  
Mr. and Mrs. Art Baker...  
Mr. and Mrs. Stephen...  
Mr. and Mrs. Robert Kiri...

Personal Notes  
Mr. and Mrs. Alvin Beuerle...  
Mr. and Mrs. Arvin Vais...  
Mr. and Mrs. Harold Brown...

Personal Notes  
Mr. and Mrs. Roland Guenther...  
Mr. and Mrs. Kaylor...  
Mr. and Mrs. Victor Grossman...

Personal Notes  
Mr. and Mrs. LeRoy Breitenwischer...  
Mr. and Mrs. Victor Grossman...  
Mr. and Mrs. Roy Widmayer...

Personal Notes  
Mr. and Mrs. LeRoy Breitenwischer...  
Mr. and Mrs. Victor Grossman...  
Mr. and Mrs. Roy Widmayer...

Personal Notes  
Mr. and Mrs. LeRoy Breitenwischer...  
Mr. and Mrs. Victor Grossman...  
Mr. and Mrs. Roy Widmayer...

Personal Notes  
Mr. and Mrs. LeRoy Breitenwischer...  
Mr. and Mrs. Victor Grossman...  
Mr. and Mrs. Roy Widmayer...

Personal Notes  
Mr. and Mrs. LeRoy Breitenwischer...  
Mr. and Mrs. Victor Grossman...  
Mr. and Mrs. Roy Widmayer...

Personal Notes  
Mr. and Mrs. LeRoy Breitenwischer...  
Mr. and Mrs. Victor Grossman...  
Mr. and Mrs. Roy Widmayer...

# Experts Say Weed Control Chemicals Are Improved

Government experts in chemical weed control say the use of these materials is increasing every year and some rank their development with the greatest agricultural discoveries of all time. Despite the phenomenal increase in the use of chemicals to kill weeds, however, some important manufacturers claim that the practice and best production over 50 per cent.

Experts say that the use of chemicals to kill weeds is increasing every year and some rank their development with the greatest agricultural discoveries of all time. Despite the phenomenal increase in the use of chemicals to kill weeds, however, some important manufacturers claim that the practice and best production over 50 per cent.

Experts say that the use of chemicals to kill weeds is increasing every year and some rank their development with the greatest agricultural discoveries of all time. Despite the phenomenal increase in the use of chemicals to kill weeds, however, some important manufacturers claim that the practice and best production over 50 per cent.

Experts say that the use of chemicals to kill weeds is increasing every year and some rank their development with the greatest agricultural discoveries of all time. Despite the phenomenal increase in the use of chemicals to kill weeds, however, some important manufacturers claim that the practice and best production over 50 per cent.

Experts say that the use of chemicals to kill weeds is increasing every year and some rank their development with the greatest agricultural discoveries of all time. Despite the phenomenal increase in the use of chemicals to kill weeds, however, some important manufacturers claim that the practice and best production over 50 per cent.

Experts say that the use of chemicals to kill weeds is increasing every year and some rank their development with the greatest agricultural discoveries of all time. Despite the phenomenal increase in the use of chemicals to kill weeds, however, some important manufacturers claim that the practice and best production over 50 per cent.

Experts say that the use of chemicals to kill weeds is increasing every year and some rank their development with the greatest agricultural discoveries of all time. Despite the phenomenal increase in the use of chemicals to kill weeds, however, some important manufacturers claim that the practice and best production over 50 per cent.

Experts say that the use of chemicals to kill weeds is increasing every year and some rank their development with the greatest agricultural discoveries of all time. Despite the phenomenal increase in the use of chemicals to kill weeds, however, some important manufacturers claim that the practice and best production over 50 per cent.

Experts say that the use of chemicals to kill weeds is increasing every year and some rank their development with the greatest agricultural discoveries of all time. Despite the phenomenal increase in the use of chemicals to kill weeds, however, some important manufacturers claim that the practice and best production over 50 per cent.

Experts say that the use of chemicals to kill weeds is increasing every year and some rank their development with the greatest agricultural discoveries of all time. Despite the phenomenal increase in the use of chemicals to kill weeds, however, some important manufacturers claim that the practice and best production over 50 per cent.

Experts say that the use of chemicals to kill weeds is increasing every year and some rank their development with the greatest agricultural discoveries of all time. Despite the phenomenal increase in the use of chemicals to kill weeds, however, some important manufacturers claim that the practice and best production over 50 per cent.

Experts say that the use of chemicals to kill weeds is increasing every year and some rank their development with the greatest agricultural discoveries of all time. Despite the phenomenal increase in the use of chemicals to kill weeds, however, some important manufacturers claim that the practice and best production over 50 per cent.

Experts say that the use of chemicals to kill weeds is increasing every year and some rank their development with the greatest agricultural discoveries of all time. Despite the phenomenal increase in the use of chemicals to kill weeds, however, some important manufacturers claim that the practice and best production over 50 per cent.

Experts say that the use of chemicals to kill weeds is increasing every year and some rank their development with the greatest agricultural discoveries of all time. Despite the phenomenal increase in the use of chemicals to kill weeds, however, some important manufacturers claim that the practice and best production over 50 per cent.

# Telephone Co. Reaches Accord With Union

The General Telephone Company of Michigan and the IBEW Local 117, 1401, 1410, have signed a new contract covering the working hours of the company's telephone employees. The contract covers the period from August 21, 1955, to August 21, 1956, with a retroactive date to May 10, 1955.

The General Telephone Company of Michigan and the IBEW Local 117, 1401, 1410, have signed a new contract covering the working hours of the company's telephone employees. The contract covers the period from August 21, 1955, to August 21, 1956, with a retroactive date to May 10, 1955.

The General Telephone Company of Michigan and the IBEW Local 117, 1401, 1410, have signed a new contract covering the working hours of the company's telephone employees. The contract covers the period from August 21, 1955, to August 21, 1956, with a retroactive date to May 10, 1955.

The General Telephone Company of Michigan and the IBEW Local 117, 1401, 1410, have signed a new contract covering the working hours of the company's telephone employees. The contract covers the period from August 21, 1955, to August 21, 1956, with a retroactive date to May 10, 1955.

The General Telephone Company of Michigan and the IBEW Local 117, 1401, 1410, have signed a new contract covering the working hours of the company's telephone employees. The contract covers the period from August 21, 1955, to August 21, 1956, with a retroactive date to May 10, 1955.

The General Telephone Company of Michigan and the IBEW Local 117, 1401, 1410, have signed a new contract covering the working hours of the company's telephone employees. The contract covers the period from August 21, 1955, to August 21, 1956, with a retroactive date to May 10, 1955.

The General Telephone Company of Michigan and the IBEW Local 117, 1401, 1410, have signed a new contract covering the working hours of the company's telephone employees. The contract covers the period from August 21, 1955, to August 21, 1956, with a retroactive date to May 10, 1955.

The General Telephone Company of Michigan and the IBEW Local 117, 1401, 1410, have signed a new contract covering the working hours of the company's telephone employees. The contract covers the period from August 21, 1955, to August 21, 1956, with a retroactive date to May 10, 1955.

The General Telephone Company of Michigan and the IBEW Local 117, 1401, 1410, have signed a new contract covering the working hours of the company's telephone employees. The contract covers the period from August 21, 1955, to August 21, 1956, with a retroactive date to May 10, 1955.

The General Telephone Company of Michigan and the IBEW Local 117, 1401, 1410, have signed a new contract covering the working hours of the company's telephone employees. The contract covers the period from August 21, 1955, to August 21, 1956, with a retroactive date to May 10, 1955.

The General Telephone Company of Michigan and the IBEW Local 117, 1401, 1410, have signed a new contract covering the working hours of the company's telephone employees. The contract covers the period from August 21, 1955, to August 21, 1956, with a retroactive date to May 10, 1955.

The General Telephone Company of Michigan and the IBEW Local 117, 1401, 1410, have signed a new contract covering the working hours of the company's telephone employees. The contract covers the period from August 21, 1955, to August 21, 1956, with a retroactive date to May 10, 1955.

The General Telephone Company of Michigan and the IBEW Local 117, 1401, 1410, have signed a new contract covering the working hours of the company's telephone employees. The contract covers the period from August 21, 1955, to August 21, 1956, with a retroactive date to May 10, 1955.

The General Telephone Company of Michigan and the IBEW Local 117, 1401, 1410, have signed a new contract covering the working hours of the company's telephone employees. The contract covers the period from August 21, 1955, to August 21, 1956, with a retroactive date to May 10, 1955.

# Anything less is an old-fashioned truck!

## New Chevrolet Task-Force Trucks

They're the most modern trucks on the road. If you don't get all the advantages they offer, you stand to lose money on the job today... and again at trade-in-time!

Most modern truck styling. We call it Work Styling—and you get it only in new Chevrolet trucks! Two fresh, functional styling treatments are offered—type frames! Tubelless tires standard on 1/2-ton models! Come in and see all the ways your Chevrolet truck will do your job better—and look better doing it!

Most modern features throughout! Advanced suspensions, more rigid, ladder-type frames! Tubelless tires standard on 1/2-ton models! Come in and see all the ways your Chevrolet truck will do your job better—and look better doing it!

Most modern power options! Power windows, power locks, power mirrors, power seats, power windows, power locks, power mirrors, power seats, power windows, power locks, power mirrors, power seats.

Most modern electrical system for quicker starting, better ignition and a greater electrical reserve.

The truck driver's "dream cab" That's the closest we can come to describing the new Fite-Ride De Luxe cab. What truck driver wouldn't go for features like these: panoramic windshield for wider, safer vision; concealed Safety Step that stays clear of snow, mud and ice; High-Level electrical system for quicker starting, better ignition and a greater electrical reserve.

Year after year, America's best selling truck!

# TIRB CHEVROLET COMPANY

131 ADRIAN MANCHESTER Phone GA 6-2431

### State Is Winning War Against Bangs Disease

Michigan's 20 year old war with bangs, is approaching an end, State Department of Agriculture officials say, as the campaign against the disease is now about three years ahead of the schedule. By January, 1956, they predict, every head of cattle in the state will be tested for the disease, an important milestone in a program that began back in the thirties. "We're three years ahead of the schedule we had set up a year ago," said I. B. Hays, deputy director of the department and member of a brucellosis advisory committee. The accelerated program was made possible by additional federal grants totaling nearly one million dollars over the past two years. "Brucellosis of cattle, also known as 'Bangs Disease' and contagious abortion, is a contagious and infectious disease which causes calves and calves to be born with production. Every year the disease results in the loss of some 200,000 calves in the United States. It costs the dairy farmer over 100 million dollars annually, considering milk production, loss of calves and other losses. What can be done to combat this disease? The answer is, of course, to prevent its spread. The fight against the disease starts on a local level, when a county board of supervisors requests assistance from the state and federal government. When this request is granted, veterinarians in the area start a series of tests of the cattle. These veterinarians are paid to make the tests by the state. The results of a sampling of milk from each cow produced on the farm. The test results may be "reactive" or "non-reactive." The milk test is followed by a blood test, to all kinds of tests, because a milk sample may be obtained when a cow is in the milking parlor. The milk test is followed by a blood test, to all kinds of tests, because a milk sample may be obtained when a cow is in the milking parlor. The milk test is followed by a blood test, to all kinds of tests, because a milk sample may be obtained when a cow is in the milking parlor.

### Ford Plan For Retirement OK

Improvements in Ford Motor Company's retirement plan for 1956, approved by the U. S. Treasury Department, were announced today. The plan, which provides for a 10 percent increase in the value of the plan, was approved by the U. S. Treasury Department. The plan, which provides for a 10 percent increase in the value of the plan, was approved by the U. S. Treasury Department. The plan, which provides for a 10 percent increase in the value of the plan, was approved by the U. S. Treasury Department.

### Turnpike Chairman Higgins Challenges Hwy. Comm. Ziegler

Michigan Turnpike Authority Chairman, George N. Higgins, conferred with Engineering Consultant, Murray D. Van Wagoner, and then took strong exception of Highway Commissioner Ziegler's Monday night report at the Mackinac Island and Turnpike Authority meeting. Van Wagoner is a former State Highway Commissioner himself and one time Michigan Governor. Ziegler was reported by the Associated Press in a September 13 dispatch as having said of the Mackinac Island and Turnpike Authority meeting he could build the toll road for almost half the Authority's estimated cost. "If Highway Commissioner Ziegler said he could build the proposed toll road for almost half the cost, he is not a highway engineer," Van Wagoner said. "He is a politician."

### Federal Reserve To Study Farm Economy Plan

The Federal Reserve System today is studying a balance of farm operations in 1954 to show how farmers' assets stacked up against their liabilities at the beginning of this year. As was to be expected, the report shows that farm assets were off to some extent by declining value of livestock, machinery and motor vehicles. The overall decrease in livestock value was 10 percent, while the value of farm machinery and motor vehicles was down 15 percent. The report also shows that farm assets were off to some extent by declining value of livestock, machinery and motor vehicles. The overall decrease in livestock value was 10 percent, while the value of farm machinery and motor vehicles was down 15 percent.

### Erosion Control Structure Replaces Open Ditch

Harold Folsom, Saline township farmer, recently replaced a drainage ditch with a concrete structure. The ditch was 10 feet wide and 2 feet deep. The concrete structure is 10 feet wide and 2 feet deep. The ditch was 10 feet wide and 2 feet deep. The concrete structure is 10 feet wide and 2 feet deep.

### Community Kick-Off Dinner Slated; Plans Are Set For Fund Raising Campaign Here

Some seventy-five workers are armed with their kits and instructions for the opening of the Manchester Area Community Fund. The fund is a voluntary organization for the purpose of raising money for the Manchester Area Community Fund. The fund is a voluntary organization for the purpose of raising money for the Manchester Area Community Fund.

### Tax Advisor Bid Remains Tabled

Superior Arthur E. Carpenter of East Ann Arbor asked the Board of Supervisors of Washtenaw County at the regular meeting to allow the proposal for a county tax advisor to remain tabled until the October meeting. The proposal is for a county tax advisor to remain tabled until the October meeting. The proposal is for a county tax advisor to remain tabled until the October meeting.

### O.E.S. Officers Are Feted

The annual election of officers of the Manchester O.E.S. was held at the Masonic hall. The officers elected were: President, Fred M. ... The officers elected were: President, Fred M. ...

### 1,200 At Manchester School Dedication

The Manchester school district unveiled its new \$500,000 high school last Wednesday night in an official dedication and open house celebration, with Dr. John A. Hannah, president of Michigan State University, as chief speaker for the occasion. More than 1,200 persons visited the new brick and block one-story structure located on the east border of town on E. Main Street. Dr. Hannah was impressed with the school and commented on some of its new features, especially the intercommunication system that links the offices of the superintendent with each department. The school is a fine example of modern architecture and is a credit to the Manchester school district.

### Officials Estimate Cost of Disposal Plant; Denied Extension By Commission

Manchester was declared in default of a Water Resources Commission order to end pollution of the Raisin River last Thursday. Joe Schwab, village president and James C. Hendley, village attorney were in Lansing to discuss the same case. The cost of the proposed sewage disposal plant would be in the neighborhood of \$200,000. The village officials point out that they are planning in every way possible to cooperate with the Water Resources Commission. The actual construction of a plant has been somewhat retarded because of the delay in getting the necessary permits.

### 'A Small World' Mason Says

The article printed below was taken from the "Ann Arbor Masonic News" October issue and we believe that the article will be of interest to Manchester Masons who might be curious to know who Mr. Schumacher is writing about. Lodge Receives Letter From Brother Schumacher. Derision, Germany August 29

### Coming Events

- Sept. 29 - PTA meeting at 7:30 p.m. at the school.
- Oct. 1 - School opening at 8:30 a.m.
- Oct. 2 - Church service at 10 a.m.
- Oct. 3 - PTA meeting at 7:30 p.m.
- Oct. 4 - School opening at 8:30 a.m.
- Oct. 5 - Church service at 10 a.m.

### Turnpike Chairman Higgins Challenges Hwy. Comm. Ziegler

Michigan Turnpike Authority Chairman, George N. Higgins, conferred with Engineering Consultant, Murray D. Van Wagoner, and then took strong exception of Highway Commissioner Ziegler's Monday night report at the Mackinac Island and Turnpike Authority meeting. Van Wagoner is a former State Highway Commissioner himself and one time Michigan Governor. Ziegler was reported by the Associated Press in a September 13 dispatch as having said of the Mackinac Island and Turnpike Authority meeting he could build the toll road for almost half the Authority's estimated cost. "If Highway Commissioner Ziegler said he could build the proposed toll road for almost half the cost, he is not a highway engineer," Van Wagoner said. "He is a politician."

### Community Kick-Off Dinner Slated; Plans Are Set For Fund Raising Campaign Here

Some seventy-five workers are armed with their kits and instructions for the opening of the Manchester Area Community Fund. The fund is a voluntary organization for the purpose of raising money for the Manchester Area Community Fund. The fund is a voluntary organization for the purpose of raising money for the Manchester Area Community Fund.

### Tax Advisor Bid Remains Tabled

Superior Arthur E. Carpenter of East Ann Arbor asked the Board of Supervisors of Washtenaw County at the regular meeting to allow the proposal for a county tax advisor to remain tabled until the October meeting. The proposal is for a county tax advisor to remain tabled until the October meeting. The proposal is for a county tax advisor to remain tabled until the October meeting.

### O.E.S. Officers Are Feted

The annual election of officers of the Manchester O.E.S. was held at the Masonic hall. The officers elected were: President, Fred M. ... The officers elected were: President, Fred M. ...

### 1,200 At Manchester School Dedication

The Manchester school district unveiled its new \$500,000 high school last Wednesday night in an official dedication and open house celebration, with Dr. John A. Hannah, president of Michigan State University, as chief speaker for the occasion. More than 1,200 persons visited the new brick and block one-story structure located on the east border of town on E. Main Street. Dr. Hannah was impressed with the school and commented on some of its new features, especially the intercommunication system that links the offices of the superintendent with each department. The school is a fine example of modern architecture and is a credit to the Manchester school district.

### Officials Estimate Cost of Disposal Plant; Denied Extension By Commission

Manchester was declared in default of a Water Resources Commission order to end pollution of the Raisin River last Thursday. Joe Schwab, village president and James C. Hendley, village attorney were in Lansing to discuss the same case. The cost of the proposed sewage disposal plant would be in the neighborhood of \$200,000. The village officials point out that they are planning in every way possible to cooperate with the Water Resources Commission. The actual construction of a plant has been somewhat retarded because of the delay in getting the necessary permits.

### 'A Small World' Mason Says

The article printed below was taken from the "Ann Arbor Masonic News" October issue and we believe that the article will be of interest to Manchester Masons who might be curious to know who Mr. Schumacher is writing about. Lodge Receives Letter From Brother Schumacher. Derision, Germany August 29

### Coming Events

- Sept. 29 - PTA meeting at 7:30 p.m. at the school.
- Oct. 1 - School opening at 8:30 a.m.
- Oct. 2 - Church service at 10 a.m.
- Oct. 3 - PTA meeting at 7:30 p.m.
- Oct. 4 - School opening at 8:30 a.m.
- Oct. 5 - Church service at 10 a.m.

# THE MANCHESTER ENTERPRISE

WANT-ADS  
Call O'Brien 8-3221 to place an Ad in the Classified Columns of your newspaper. Tracts, sell rent, or exchange—the result may be immediate and profitable. Try it the next issue.

## COMMISSION SAYS RAISIN RIVER IS POLLUTED

Manchester was declared in default of a Water Resources Commission order to end pollution of the Raisin River last Thursday. Joe Schwab, village president and James C. Hendley, village attorney were in Lansing to discuss the same case. The cost of the proposed sewage disposal plant would be in the neighborhood of \$200,000. The village officials point out that they are planning in every way possible to cooperate with the Water Resources Commission. The actual construction of a plant has been somewhat retarded because of the delay in getting the necessary permits.

## Community Kick-Off Dinner Slated; Plans Are Set For Fund Raising Campaign Here

Some seventy-five workers are armed with their kits and instructions for the opening of the Manchester Area Community Fund. The fund is a voluntary organization for the purpose of raising money for the Manchester Area Community Fund. The fund is a voluntary organization for the purpose of raising money for the Manchester Area Community Fund.

## Tax Advisor Bid Remains Tabled

Superior Arthur E. Carpenter of East Ann Arbor asked the Board of Supervisors of Washtenaw County at the regular meeting to allow the proposal for a county tax advisor to remain tabled until the October meeting. The proposal is for a county tax advisor to remain tabled until the October meeting. The proposal is for a county tax advisor to remain tabled until the October meeting.

## O.E.S. Officers Are Feted

The annual election of officers of the Manchester O.E.S. was held at the Masonic hall. The officers elected were: President, Fred M. ... The officers elected were: President, Fred M. ...

## 1,200 At Manchester School Dedication

The Manchester school district unveiled its new \$500,000 high school last Wednesday night in an official dedication and open house celebration, with Dr. John A. Hannah, president of Michigan State University, as chief speaker for the occasion. More than 1,200 persons visited the new brick and block one-story structure located on the east border of town on E. Main Street. Dr. Hannah was impressed with the school and commented on some of its new features, especially the intercommunication system that links the offices of the superintendent with each department. The school is a fine example of modern architecture and is a credit to the Manchester school district.

## Officials Estimate Cost of Disposal Plant; Denied Extension By Commission

Manchester was declared in default of a Water Resources Commission order to end pollution of the Raisin River last Thursday. Joe Schwab, village president and James C. Hendley, village attorney were in Lansing to discuss the same case. The cost of the proposed sewage disposal plant would be in the neighborhood of \$200,000. The village officials point out that they are planning in every way possible to cooperate with the Water Resources Commission. The actual construction of a plant has been somewhat retarded because of the delay in getting the necessary permits.

## 'A Small World' Mason Says

The article printed below was taken from the "Ann Arbor Masonic News" October issue and we believe that the article will be of interest to Manchester Masons who might be curious to know who Mr. Schumacher is writing about. Lodge Receives Letter From Brother Schumacher. Derision, Germany August 29

### Coming Events

- Sept. 29 - PTA meeting at 7:30 p.m. at the school.
- Oct. 1 - School opening at 8:30 a.m.
- Oct. 2 - Church service at 10 a.m.
- Oct. 3 - PTA meeting at 7:30 p.m.
- Oct. 4 - School opening at 8:30 a.m.
- Oct. 5 - Church service at 10 a.m.

### It's Old Stove Round-Up Time

BUY YOUR NEW GAS RANGE NOW AND SAVE

GET AN EXTRA BIG TRADE-IN SEE YOUR GAS RANGE DEALER NOW

LOOK TO GAS for the smartest automatic ranges money can buy

FREE VALUABLE MIRROR with every GAS Range purchased during this sale

Griddle-Grill

Ideal for Steaks, Chops, Hamburgers, Griddle Cakes

L. V. Kirk  
ELECTRICAL STORE — WIRING  
Phone GAS-3701

### Sunday Church Services

<b>SHARON</b> Evangelical United Brethren Church Rev. J. A. Beardsley, Minister Sunday, September 28—Sunday School at 10:00 a.m. in Main Hall Worship at 11:00 a.m. in Main Hall Evening Service at 7:30 p.m. in Main Hall	<b>ST. MARY'S CATHOLIC</b> Church Rev. William Schneider, Pastor Sunday, October 2—8:00 a.m. Mass 9:00 a.m. Mass 10:00 a.m. Mass 11:00 a.m. Mass 5:00 p.m. Mass 8:00 p.m. Mass	<b>MANCHESTER METHODIST</b> Church Rev. Carl F. Pastor Sunday, October 2—8:00 a.m. Church School 9:00 a.m. Church School 10:00 a.m. Church School 11:00 a.m. Church School 5:00 p.m. Church School 8:00 p.m. Church School	<b>EMANUEL EVANGELICAL and REFORMED CHURCH</b> Rev. Karl H. A. West, Pastor 8:45 a.m.—Sunday School 10:00 a.m.—Divine Worship Service Worship by Holy Communion On this World Wide Communion Sunday, Pastor West will preach the second sermon in the series on "Our Commitment and Christian Community" and the for his topic, "Our Commitment to Christ"	<b>BETHEL CHURCH</b> Rev. T. W. Menzel, Pastor 8:45 a.m.—Sunday School 10:00 a.m.—Divine Worship Service Worship by Holy Communion On this World Wide Communion Sunday, Pastor Menzel will preach the second sermon in the series on "Our Commitment and Christian Community" and the for his topic, "Our Commitment to Christ"	<b>IRON CREEK CHURCH</b> Rev. Alvin Bauer, Pastor 8:45 a.m.—Sunday School 10:00 a.m.—Divine Worship Service Worship by Holy Communion On this World Wide Communion Sunday, Pastor Bauer will preach the second sermon in the series on "Our Commitment and Christian Community" and the for his topic, "Our Commitment to Christ"
---	--	--	---	--	--

### E. G. MANN & SONS

Manchester - Bridgewater

Chopped Beef	39c	Catsup	33c				
Hunts Whole	2 1/2 can 2 for	Chicken Of The Sea	3 for				
Apricots	49c	Tuna	79c				
GOLD	13 lb Bag	MEDAL FLOUR	89c				
Grapefruit Juice	Libby's	Mazola Oil	Bottle	Bacon	Sliced		
46 oz.	25c	69c qt.	29c lb.				
Chase and Sanborn Instant	COFFEE	89c	N.B.C. Swiss	Cookies	35c	Lettuce	2 for 39c

MINGUS MARKET  
PURE FOOD STORE  
BEER - WINE - FRESH FRUITS - VEGETABLES - MEATS - GROCERIES  
WE BUY EGGS—(Open Wed-Friday-Sat. Evenings)—PHONE GAS-2421  
Member of M.M.A.

### THE MANCHESTER ENTERPRISE

WANT-ADS  
Call O'Brien 8-3221 to place an Ad in the Classified Columns of your newspaper. Tracts, sell rent, or exchange—the result may be immediate and profitable. Try it the next issue.

## COMMISSION SAYS RAISIN RIVER IS POLLUTED

Manchester was declared in default of a Water Resources Commission order to end pollution of the Raisin River last Thursday. Joe Schwab, village president and James C. Hendley, village attorney were in Lansing to discuss the same case. The cost of the proposed sewage disposal plant would be in the neighborhood of \$200,000. The village officials point out that they are planning in every way possible to cooperate with the Water Resources Commission. The actual construction of a plant has been somewhat retarded because of the delay in getting the necessary permits.

## Community Kick-Off Dinner Slated; Plans Are Set For Fund Raising Campaign Here

Some seventy-five workers are armed with their kits and instructions for the opening of the Manchester Area Community Fund. The fund is a voluntary organization for the purpose of raising money for the Manchester Area Community Fund. The fund is a voluntary organization for the purpose of raising money for the Manchester Area Community Fund.

## Tax Advisor Bid Remains Tabled

Superior Arthur E. Carpenter of East Ann Arbor asked the Board of Supervisors of Washtenaw County at the regular meeting to allow the proposal for a county tax advisor to remain tabled until the October meeting. The proposal is for a county tax advisor to remain tabled until the October meeting. The proposal is for a county tax advisor to remain tabled until the October meeting.

## O.E.S. Officers Are Feted

The annual election of officers of the Manchester O.E.S. was held at the Masonic hall. The officers elected were: President, Fred M. ... The officers elected were: President, Fred M. ...

## 1,200 At Manchester School Dedication

The Manchester school district unveiled its new \$500,000 high school last Wednesday night in an official dedication and open house celebration, with Dr. John A. Hannah, president of Michigan State University, as chief speaker for the occasion. More than 1,200 persons visited the new brick and block one-story structure located on the east border of town on E. Main Street. Dr. Hannah was impressed with the school and commented on some of its new features, especially the intercommunication system that links the offices of the superintendent with each department. The school is a fine example of modern architecture and is a credit to the Manchester school district.

## Officials Estimate Cost of Disposal Plant; Denied Extension By Commission

Manchester was declared in default of a Water Resources Commission order to end pollution of the Raisin River last Thursday. Joe Schwab, village president and James C. Hendley, village attorney were in Lansing to discuss the same case. The cost of the proposed sewage disposal plant would be in the neighborhood of \$200,000. The village officials point out that they are planning in every way possible to cooperate with the Water Resources Commission. The actual construction of a plant has been somewhat retarded because of the delay in getting the necessary permits.

## 'A Small World' Mason Says

The article printed below was taken from the "Ann Arbor Masonic News" October issue and we believe that the article will be of interest to Manchester Masons who might be curious to know who Mr. Schumacher is writing about. Lodge Receives Letter From Brother Schumacher. Derision, Germany August 29

### Coming Events

- Sept. 29 - PTA meeting at 7:30 p.m. at the school.
- Oct. 1 - School opening at 8:30 a.m.
- Oct. 2 - Church service at 10 a.m.
- Oct. 3 - PTA meeting at 7:30 p.m.
- Oct. 4 - School opening at 8:30 a.m.
- Oct. 5 - Church service at 10 a.m.

SARAH RECK in wheelchair and a patient at University Hospital returns for dedication of the new school. She is pictured with three of her classmates. Sarah is a freshman.