

Council Proceedings
August 17, 1964
The following items were presented to the council...

Lenoxes Band Festival Stated
For September 25
The Lenoxes Band Festival will be held on September 25...

Charles H. Hoach
Big Population
Paces Problem
For U.S. Farms
Last Lansing - The number of American farms...

4-H Members
Prepare for State Show
According to word received from the Michigan 4-H Council...

Rev. Rest Speaks
At IPA Convention
The Rev. Dr. Robert Rest, pastor of the First Presbyterian Church...

REUNIONS
The 20th annual Greater Manchester Reunion was held on August 22...

Manchester Ford Employee
Saves Life of Girl, 3
Edward Walls of Clinton, an employee of the Manchester Ford plant...

Manchester Fair Board
Announces Plans for 1964
The Manchester Fair Board has announced that the plans are now complete...

COLONIAL GARDENS
DANCE
Every Saturday Night 8 to 1

Manchester Frozen Food Locker
HAVE YOU BEEN IN OR FRUSTRATED IN YOUR ORDER FOR FROZEN FOODS?
10% Discount
ONE DOZEN OR MORE OF A KIND GIVES YOU 10% OFF

AUCTION
September 4th, 1964
At 10:00 A.M. East side of 1 Mile North of North St. 1/2 block.

SUPPLIES
Fred & Ida Colementer, Owners
George Pittman, Auctioneer
Ken Green, Clerk

OUR CARPET CUSTOMERS
ARE SATISFIED
We don't just "sell" CARPETS here at CARMA'S. We cut, fit, sew, lay and pad carpets of your choice...

Mingus Market
Full Line of Plastic Supplies For That Labor Day Picnic
WHITE, YELLOW, CHOCOLATE Pillsbury Cake Mixes 3-\$1.00

Church News
EMANUEL EVANGELICAL AND REFORMED CHURCH
SARAH EVANGELICAL UNITED BROTHERS CHURCH

WE SELL CARPET
NOT CONVERSATION
When you visit CARMA'S for your CARPET or floor covering you'll be amazed at our HUGE selection.

Manchester Golf League
The Out-Of-Borders Ladies Golf Club League closed its season with a picnic held at Clark's Lake Club...

Funeral Thursday for Eben F. Horning
Eben F. Horning, 53, a resident of Brookline and vicinity for his entire lifetime...

Poultry Rules Governing Fair
There will be an Egg Production Class and a Meat Production Class in this division again this year.

Manchester Golf League
The Out-Of-Borders Ladies Golf Club League closed its season with a picnic held at Clark's Lake Club...

FLUKS HYBRID
We always urge our customers to get their Fluk's G-Hybrid milk on the banks only. We can supply you with a 100% pure milk...

OUR CARPET CUSTOMERS ARE SATISFIED
We don't just "sell" CARPETS here at CARMA'S. We cut, fit, sew, lay and pad carpets of your choice...

Mingus Market
Full Line of Plastic Supplies For That Labor Day Picnic
WHITE, YELLOW, CHOCOLATE Pillsbury Cake Mixes 3-\$1.00

WE SELL CARPET
NOT CONVERSATION
When you visit CARMA'S for your CARPET or floor covering you'll be amazed at our HUGE selection.

THE MANCHESTER ENTERPRISE
Serving This Community For More Than Eighty-six Years
COMMUNITY FAIR SEPT. 16-17-18

Manchester Ford Employee Saves Life of Girl, 3
Edward Walls of Clinton, an employee of the Manchester Ford plant, saved the life of a three-year-old Detroit girl who had fallen into Wampeters Lake.

Manchester Fair Board Announces Plans for 1964
The Manchester Fair Board has announced that the plans are now complete for the 34th annual fair to be held here September 16, 17 and 18th.

Funeral Thursday for Eben F. Horning
Eben F. Horning, 53, a resident of Brookline and vicinity for his entire lifetime, died at 11:30 p. m. Thursday at his home at 24 N. 12th St., Brookline.

Poultry Rules Governing Fair
There will be an Egg Production Class and a Meat Production Class in this division again this year.

Manchester Golf League
The Out-Of-Borders Ladies Golf Club League closed its season with a picnic held at Clark's Lake Club...

Manchester Fair Board Announces Plans for 1964
The Manchester Fair Board has announced that the plans are now complete for the 34th annual fair to be held here September 16, 17 and 18th.

Funeral Thursday for Eben F. Horning
Eben F. Horning, 53, a resident of Brookline and vicinity for his entire lifetime, died at 11:30 p. m. Thursday at his home at 24 N. 12th St., Brookline.

Poultry Rules Governing Fair
There will be an Egg Production Class and a Meat Production Class in this division again this year.

Manchester Golf League
The Out-Of-Borders Ladies Golf Club League closed its season with a picnic held at Clark's Lake Club...

Manchester Fair Board Announces Plans for 1964
The Manchester Fair Board has announced that the plans are now complete for the 34th annual fair to be held here September 16, 17 and 18th.

Funeral Thursday for Eben F. Horning
Eben F. Horning, 53, a resident of Brookline and vicinity for his entire lifetime, died at 11:30 p. m. Thursday at his home at 24 N. 12th St., Brookline.

Poultry Rules Governing Fair
There will be an Egg Production Class and a Meat Production Class in this division again this year.

Manchester Golf League
The Out-Of-Borders Ladies Golf Club League closed its season with a picnic held at Clark's Lake Club...

County Farm Bureau Delegates Attend District Meeting To Plan For Major Activities

Washenaw County Farm Bureau committee members with other delegates from Macomb, Livingston, Oakland and Wayne counties met in New Hudson last week to plan for this fall's major activities of the organization.

Discussed was the importance of policy development. Policies are developed through resources adopted at the annual meeting of county state and national. However as Farm Bureau prides itself on being a grass roots organization, the ideas incorporated in the resolutions must come from the members. This is accomplished in Michigan through over 1200 community discussion groups, 47 of which are in Washenaw County. These groups are held in homes, public buildings, schools, churches and elsewhere. They are held by majority opinion and the members think it good to have the members' views on the farm and the general public. The members are to be based on facts—not hearsay or prejudice. Material on the professional and technical is to be presented. These are to be held in the work to all discussion groups for reference.

Attending the meeting from this county were: Frank B. McCall, County President; Harry Jones, Harry Harman, Clarence King, William Thiel, Don Wiedeman, Peter Thompson, Walter Wolf, and Mr. and Mrs. Herman Howes.

FOR ALUMINUM
Combination Doors and Windows
Call GA 8-2121 Manchester Mich.
And Get Our Prices
Roofing - Siding - Insulation
Time Payment up to Two Years on Approved Credit
SERVICE ROOFING CO.
Attentive Brothers
214 Hibbard Road Manchester, Michigan

Modernize
YOUR HEATING
If your furnace has become old, it will pay you to check its performance against the new, automatic fuel saving equipment made by Williamson of Chicago. It will save you money and give you more heat. FREE INSPECTION. Your credit good.

WILLIAMSON
Gas Furnace

McGuire Electric & Heating
ELECTRICAL CONTRACTOR
Ph. — Res: GA8-2451 Bus: GA8-2891

MACSHORE CLASSICS
As Seen IN SEVENTEEN
3.95

We behold new wonders in good blouse fashion in this CLEOPATRYA™ casual print cotton by Macshore. We hold the solid color contrast of the handkerchief collar, the cuffs on adjustable doll sleeves. Here in beige-cream, soft brown, pink, blue. Sizes 30 to 38.

SILVER OR COPPER HOOPS \$1.00
Campus Toggery
1111 S. U. near E. U.

JERRY'S SERVICE
SILVER OR COPPER HOOPS \$1.00
Campus Toggery
1111 S. U. near E. U.

Local Briefs

Recent guests of Mr. and Mrs. Henry Neuhaus and Mrs. John Neuhaus and family of Chelsea, Mr. and Mrs. G. E. Ross of Ann Arbor and Mr. and Mrs. Harry O'Neil of Grass Lake.

Child Safety Training Must Be Continuous

"Child traffic safety education is a continuing process and is the responsibility of all of us," according to Sgt. Claude Bartell, commanding officer of the Clinton Post of the Michigan State Police.

The Manchester Enterprise

Published weekly in Manchester, Michigan. Subscription rates: \$1.00 per year in Michigan; \$1.20 per year outside of the state. Postage paid at Manchester, Michigan. Second-class postage paid at Manchester, Michigan. Postmaster: Please send address changes to The Manchester Enterprise, P.O. Box 100, Manchester, Michigan 48050.

Form Ag Council To Coordinate County Program

A group of people representing different agencies working with farmers in Washenaw County have joined together recently in forming a "Washenaw County Agricultural Council."

She's In The Chips!

IT WAS INEVITABLE that when Sgt. Bartell, James Carson, should be honored by the National Potato Chip Institute as "The Best of the Best."

Ann Arbor School Study Include Only Schools Nearby

Twenty three public schools within a 5-mile radius of Ann Arbor will be included in the Ann Arbor Area School Study.

Saline Mill Theatre Makes Plans For 1955 Season Plays

The second season of the Saline Mill Theatre will close after a successful season gratifying to the public who have enjoyed the play.

Steer Clear 'Of Fancies' In Dairying

Dairy cows don't need a long list of high-priced feed supplements that are supposed to do everything but the chores on the farm.

Two Boys Riding on One Bicycle Struck Down by Detroit Motorist

Two boys riding on a stolen bicycle were struck down by an automobile last Friday when they suddenly cut into the path of the oncoming motorist.

Ann Arbor School Study Include Only Schools Nearby

Twenty three public schools within a 5-mile radius of Ann Arbor will be included in the Ann Arbor Area School Study.

Saline Mill Theatre Makes Plans For 1955 Season Plays

The second season of the Saline Mill Theatre will close after a successful season gratifying to the public who have enjoyed the play.

Steer Clear 'Of Fancies' In Dairying

Dairy cows don't need a long list of high-priced feed supplements that are supposed to do everything but the chores on the farm.

Two Boys Riding on One Bicycle Struck Down by Detroit Motorist

Two boys riding on a stolen bicycle were struck down by an automobile last Friday when they suddenly cut into the path of the oncoming motorist.

Child Safety Training Must Be Continuous

"Child traffic safety education is a continuing process and is the responsibility of all of us," according to Sgt. Claude Bartell, commanding officer of the Clinton Post of the Michigan State Police.

The Manchester Enterprise

Published weekly in Manchester, Michigan. Subscription rates: \$1.00 per year in Michigan; \$1.20 per year outside of the state. Postage paid at Manchester, Michigan. Second-class postage paid at Manchester, Michigan. Postmaster: Please send address changes to The Manchester Enterprise, P.O. Box 100, Manchester, Michigan 48050.

Form Ag Council To Coordinate County Program

A group of people representing different agencies working with farmers in Washenaw County have joined together recently in forming a "Washenaw County Agricultural Council."

She's In The Chips!

IT WAS INEVITABLE that when Sgt. Bartell, James Carson, should be honored by the National Potato Chip Institute as "The Best of the Best."

Ann Arbor School Study Include Only Schools Nearby

Twenty three public schools within a 5-mile radius of Ann Arbor will be included in the Ann Arbor Area School Study.

Saline Mill Theatre Makes Plans For 1955 Season Plays

The second season of the Saline Mill Theatre will close after a successful season gratifying to the public who have enjoyed the play.

Holiday Accident

Two boys riding on a stolen bicycle were struck down by an automobile last Friday when they suddenly cut into the path of the oncoming motorist.



Child Safety Training Must Be Continuous

"Child traffic safety education is a continuing process and is the responsibility of all of us," according to Sgt. Claude Bartell, commanding officer of the Clinton Post of the Michigan State Police.

The Manchester Enterprise

Published weekly in Manchester, Michigan. Subscription rates: \$1.00 per year in Michigan; \$1.20 per year outside of the state. Postage paid at Manchester, Michigan. Second-class postage paid at Manchester, Michigan. Postmaster: Please send address changes to The Manchester Enterprise, P.O. Box 100, Manchester, Michigan 48050.

Form Ag Council To Coordinate County Program

A group of people representing different agencies working with farmers in Washenaw County have joined together recently in forming a "Washenaw County Agricultural Council."

She's In The Chips!

IT WAS INEVITABLE that when Sgt. Bartell, James Carson, should be honored by the National Potato Chip Institute as "The Best of the Best."

Ann Arbor School Study Include Only Schools Nearby

Twenty three public schools within a 5-mile radius of Ann Arbor will be included in the Ann Arbor Area School Study.

Saline Mill Theatre Makes Plans For 1955 Season Plays

The second season of the Saline Mill Theatre will close after a successful season gratifying to the public who have enjoyed the play.

Steer Clear 'Of Fancies' In Dairying

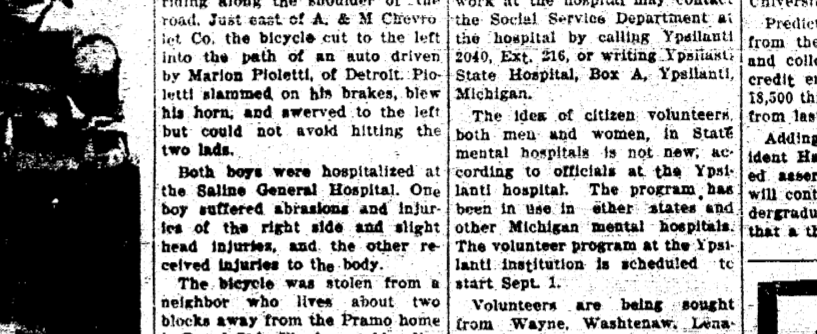
Dairy cows don't need a long list of high-priced feed supplements that are supposed to do everything but the chores on the farm.

Two Boys Riding on One Bicycle Struck Down by Detroit Motorist

Two boys riding on a stolen bicycle were struck down by an automobile last Friday when they suddenly cut into the path of the oncoming motorist.

Two Boys Riding on One Bicycle Struck Down by Detroit Motorist

Two boys riding on a stolen bicycle were struck down by an automobile last Friday when they suddenly cut into the path of the oncoming motorist.



Child Safety Training Must Be Continuous

"Child traffic safety education is a continuing process and is the responsibility of all of us," according to Sgt. Claude Bartell, commanding officer of the Clinton Post of the Michigan State Police.

The Manchester Enterprise

Published weekly in Manchester, Michigan. Subscription rates: \$1.00 per year in Michigan; \$1.20 per year outside of the state. Postage paid at Manchester, Michigan. Second-class postage paid at Manchester, Michigan. Postmaster: Please send address changes to The Manchester Enterprise, P.O. Box 100, Manchester, Michigan 48050.

Form Ag Council To Coordinate County Program

A group of people representing different agencies working with farmers in Washenaw County have joined together recently in forming a "Washenaw County Agricultural Council."

She's In The Chips!

IT WAS INEVITABLE that when Sgt. Bartell, James Carson, should be honored by the National Potato Chip Institute as "The Best of the Best."

Ann Arbor School Study Include Only Schools Nearby

Twenty three public schools within a 5-mile radius of Ann Arbor will be included in the Ann Arbor Area School Study.

Saline Mill Theatre Makes Plans For 1955 Season Plays

The second season of the Saline Mill Theatre will close after a successful season gratifying to the public who have enjoyed the play.

Steer Clear 'Of Fancies' In Dairying

Dairy cows don't need a long list of high-priced feed supplements that are supposed to do everything but the chores on the farm.

Two Boys Riding on One Bicycle Struck Down by Detroit Motorist

Two boys riding on a stolen bicycle were struck down by an automobile last Friday when they suddenly cut into the path of the oncoming motorist.

YPSI STATE HOSPITAL SEEKING VOLUNTEERS

Volunteers to help at the Ypsilanti State Hospital are being sought by hospital representatives.

18,500 To Enroll at U-M For Fall Semester

Predictions based on reports from the deans of the 15 schools, and colleges indicate the resident credit enrollment about 18,500 this fall, an increase of 1,000 from last fall.

Apples are sold by the unit by weight, or by the original container.

Apples are sold by the unit by weight, or by the original container. Selling by weight is more satisfactory, says Roberta Henning, Extension foods specialist at M.S.C.

FRESH BREAD

Activities of volunteers will include working with patients through music, crafts, painting, drawing, weaving, leatherwork, dancing, sewing, knitting, reading and other recreation.

STEER CLEAR 'OF FANCIES' IN DAIRYING

Dairy cows don't need a long list of high-priced feed supplements that are supposed to do everything but the chores on the farm.

TWO BOYS RIDING ON ONE BICYCLE STRUCK DOWN BY DETROIT MOTORIST

Two boys riding on a stolen bicycle were struck down by an automobile last Friday when they suddenly cut into the path of the oncoming motorist.

CHILD SAFETY TRAINING MUST BE CONTINUOUS

"Child traffic safety education is a continuing process and is the responsibility of all of us," according to Sgt. Claude Bartell, commanding officer of the Clinton Post of the Michigan State Police.

THE MANCHESTER ENTERPRISE

Published weekly in Manchester, Michigan. Subscription rates: \$1.00 per year in Michigan; \$1.20 per year outside of the state. Postage paid at Manchester, Michigan. Second-class postage paid at Manchester, Michigan. Postmaster: Please send address changes to The Manchester Enterprise, P.O. Box 100, Manchester, Michigan 48050.

FORM AG COUNCIL TO COORDINATE COUNTY PROGRAM

A group of people representing different agencies working with farmers in Washenaw County have joined together recently in forming a "Washenaw County Agricultural Council."

SHE'S IN THE CHIPS!

IT WAS INEVITABLE that when Sgt. Bartell, James Carson, should be honored by the National Potato Chip Institute as "The Best of the Best."

When the Job calls for CONCRETE DO IT RIGHT with Precision Mixed READY MIX

• SPEED YOUR CONCRETE CONSTRUCTION PROJECTS
• PROMPT SERVICE
• MIXED TO YOUR SPECIFICATIONS
• LET US QUOTE

Delivered right to your construction job.
Phone Manchester GA. 8-5453
Manchester READY MIX Co.
215 S. MALCOLM MANCHESTER

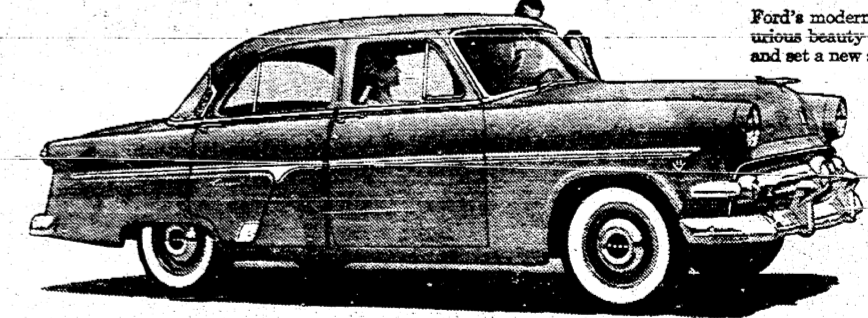
Ford's first in "GO"
Ford's Y-block V-8 is the most modern in the industry

Ford's first in Ride
Ford is the only low-priced car with Ball-Joint Front Suspension

Ford's first in Style
Ford's long, low look sets the trend for tomorrow's cars

Ford's first in Resale Value
Used car prices show FORD returns a higher percentage of its original cost at resale than any other car

CARL M. SCHABLE, INC.
215 W. Main St. Manchester, Mich.



Enterprise Want Ads Get Results!!!

