

Manchester Township TAXES NOW DUE

REGISTRATION NOTICE VILLAGE ELECTION MON., MARCH 14, 1949

To The Qualified Electors of the Village of Manchester, State of Michigan

Notice is hereby given that I will be at THE UNION SAVINGS BANK

Monday, Feb. 21, 1949

The Twentieth Day Preceding Said Election

NOTICE IS HEREBY FURTHER GIVEN THAT I WILL BE AT ANY DAY EXCEPT SUNDAYS AND HOLIDAYS FOR THE PURPOSE OF RECEIVING APPLICATIONS FOR REGISTRATION.

WANTED DEAD FARM ANIMALS USELESS

DEAD or ALIVE Farm Animals Collected Promptly

VENTURE

man, Elizabeth Lepore, ... SEVENTH GRADE ...

SEVENTH GRADE ...

SEVENTH GRADE ...

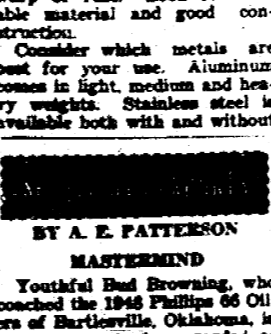
SEVENTH GRADE ...

SEVENTH GRADE ...

SEVENTH GRADE ...

SOFT WATER IN YOUR HOME!

SAVE SOAP - SAVE CLOTHES - SAVE WORK ... Sutton Soft Water Service



tractor overhaul BY FACTORY-TRAINED MECHANICS

LOW-COST A-C MOTOR KIT REPOWERS YOUR TRACTOR ENGINE

ALLIS-CHALMERS SALES AND SERVICE

LETTERS TO THE EDITOR

Dear Editor: Why can't the sign in front of the post office say no parking from 8 a. m. until 6 p. m. or ten minutes parking or something more definite.

Dear Editor: Why can't the sign in front of the post office say no parking from 8 a. m. until 6 p. m. or ten minutes parking or something more definite.

Dear Editor: Why can't the sign in front of the post office say no parking from 8 a. m. until 6 p. m. or ten minutes parking or something more definite.

Dear Editor: Why can't the sign in front of the post office say no parking from 8 a. m. until 6 p. m. or ten minutes parking or something more definite.

Dear Editor: Why can't the sign in front of the post office say no parking from 8 a. m. until 6 p. m. or ten minutes parking or something more definite.

Dear Editor: Why can't the sign in front of the post office say no parking from 8 a. m. until 6 p. m. or ten minutes parking or something more definite.

Dear Editor: Why can't the sign in front of the post office say no parking from 8 a. m. until 6 p. m. or ten minutes parking or something more definite.

Dear Editor: Why can't the sign in front of the post office say no parking from 8 a. m. until 6 p. m. or ten minutes parking or something more definite.

LETTERS TO THE EDITOR

Dear Editor: Why can't the sign in front of the post office say no parking from 8 a. m. until 6 p. m. or ten minutes parking or something more definite.

Dear Editor: Why can't the sign in front of the post office say no parking from 8 a. m. until 6 p. m. or ten minutes parking or something more definite.

Dear Editor: Why can't the sign in front of the post office say no parking from 8 a. m. until 6 p. m. or ten minutes parking or something more definite.

Dear Editor: Why can't the sign in front of the post office say no parking from 8 a. m. until 6 p. m. or ten minutes parking or something more definite.

Dear Editor: Why can't the sign in front of the post office say no parking from 8 a. m. until 6 p. m. or ten minutes parking or something more definite.

Dear Editor: Why can't the sign in front of the post office say no parking from 8 a. m. until 6 p. m. or ten minutes parking or something more definite.

Dear Editor: Why can't the sign in front of the post office say no parking from 8 a. m. until 6 p. m. or ten minutes parking or something more definite.

Dear Editor: Why can't the sign in front of the post office say no parking from 8 a. m. until 6 p. m. or ten minutes parking or something more definite.

The Manchester Enterprise

VOLUME EIGHTY-TWO MANCHESTER, MICHIGAN, THURSDAY, FEBRUARY 10, 1949 NUMBER 21

Funeral Services To Be Held Friday For Carl Gieske

Carl J. Gieske, 26, died following a lingering illness at his home at 7077 Jackson street, Dearborn, early Wednesday morning.

He was born April 14, 1922, in Manchester township, the son of the late Taylor Gieske and his wife, Mrs. Anna Gieske.

He was married to Lucille Marie Gieske on February 15, 1948, and she survives.

Funeral services will be held Friday, February 12, 1949, at 2 p. m. at the Jenter Funeral Home, 30000 Woodward street, Dearborn.

Three Injured In Car Wreck Sunday Night

Three persons were injured Sunday night in a two-car collision on Woodward street at the intersection of Woodward street and the intersection of Woodward street and the intersection of Woodward street.

Blarney

Blarney

SELECT DOCTOR WHILE IN GOOD HEALTH

The following announcement was prepared by the Washtenaw County Medical Service Commission.

All new residents in Washtenaw county are urged to select a doctor before they are in need of medical attention.

It is the duty of every citizen to select a doctor before he is in need of medical attention.

King's Daughters Met At Mrs. M. Scheuers

The King's Daughters held their last regular meeting at the home of Mrs. Marie Scheuers.

Health Department Urges Vaccination Of Dogs Now

The Board of Supervisors, dogs in this county will not be licensed unless proof of rabies vaccination is presented to the licensing officer.

Health Department Urges Vaccination Of Dogs Now

Evashevski Guest Speaker At Annual Football Bust

Manchester athletes, coaches, and guests heard Everett Evashevski, head coach of the Michigan State football team, speak at the annual football bust.

Mrs. Benj. Kuhl Buried Saturday

Mrs. Nellie Kuhl, aged 60, died after a lingering illness, at St. Joseph hospital, Ann Arbor, Michigan, on Saturday.

John Maurer, 65 Buried At Norvell

John George Maurer, age 65, died at his home, 8509 Boettcher road, Dearborn, Michigan, on Saturday.

Rawson Leads Cribbage Players

The cribbage tournament is nearly completed and appears that Walter Rawson is winner of top place with a score of 2931 for the 26 games played.

Rawson Leads Cribbage Players

Advertisement for LeROY HEIMERDINGER featuring a 'Say, Boss' cartoon and 'CONSUMERS POWER COMPANY' logo.

Be Fre... W... LYDIA

STAR THEATRE

CONSUMERS POWER COMPANY

ATTEND FUNERAL

Arboret Society To Hold Supper Feb. 16

Emma Fielder, 93 Taken By Death

FREEDOM FARM BUREAU

WEEKLY NEWS ANALYSIS Landlords Rebel Over Rent Curbs; Russians Set up Anti-ERP Program; Israel, Egypt Sign End to Fighting

EDITOR'S NOTE: These opinions are expressed in these columns, they are those of the writer and do not necessarily reflect those of this newspaper.

REBELLION: Among Landlords

Chest out muscles flexed, trident of attitude, members of the American Property Owners' Association in 20 cities threatened wholesale eviction of tenants in protest against rental control bills now in congress.

AN OFFICIAL of the organization composed of chief owners of small property, said in Tulsa, Okla., 600 to 1,000 evictions would be made in Tulsa tenants asking them to vacate within 60 days. Similar action, he said, was expected in Chicago, Houston, Kansas City, Detroit, St. Louis, Fort Wayne, Grand Rapids, Danville, Ill. and other cities.

The evictions would affect rent-controlled housing and included houses and apartments. Business units are not under rent control. SPEAR-HEADING the Tulsa movement was a retired Baptist minister, the Rev. Wallace J. Murphy, executive secretary of the 200-member Tulsa property owners' organization, and an honorary president of the national association.

The Rev. Murphy termed two rent control bills now before congress "intolerable" and said, "We refuse to operate so long as rental controls are on." Over 200,000 residential properties in Tulsa, the retired clergyman asserted. "We don't intend to serve under slavery, which would take away the right to control our property. It is not our intention to vacate our property at a loss—now they want to fine us and put us in jail."

Landlords appeared mainly increased because pending rent curbs measures would give the federal housing expedient right to control evictions, extend rent control periods, provide triple damages for landlords who violate the law, and fine up to \$5,000 and a year in jail for evicted violators.

OBSERVERS WONDERED if landlords weren't being treated with respect. Under existing law, landlords are prohibited from doing exactly what the Rev. Murphy and his associates plan to do.

The Tulsa incident was merely fuel to the flame of belief that rent curbs are not maintained. The question of housing for those who cannot afford to buy homes would become even more difficult than it is at present.

RUSSIANS: Coming to Tev?

MILITARY THE STRIKE and the political situation in the Soviet Union are of continuing interest to Americans. The latter were substantially paid for the war and the summer from "cold war" activities.

The Russians had come forth with their own version of ERP. It was a plan to limit the amount of money that could be sent out of the country.

AS THE EAST'S answer to the European recovery plan, Russia emphasized the economic control of mutual assistance for reconstruction with the aid of the United States.

The purpose of the plan was to stabilize the economy of the Soviet Union and to provide for the reconstruction of the country.

That Moscow was considering the Marshall plan when its own ERP was formulated was evident in a Russian charge that the ERP interfered with the sovereignty of the Soviet Union.

The Russian action may prove to be the vital error in the Soviet's program of expansion. If the system fails to function, it will serve only to augment the efficacy of the Marshall plan and the superiority of the western nations in equipment and ability to meet European commitments.

HURRY-UP MEASURE Priority Ordered for Rent Curbs Bill

Speed of the essence. Rent control had to be safeguarded. The bill, authorized by Senator Maybank (D. S.C.) and in the house by Representative Spencer (D. Ky.), would continue controls through March 31, 1951, and would give the federal housing expedient powers he did not have now. These would include authority to reimburse rent control agencies for the cost of decontrolling areas and on other special types of living quarters.

The bill, authorized by Senator Maybank (D. S.C.) and in the house by Representative Spencer (D. Ky.), would continue controls through March 31, 1951, and would give the federal housing expedient powers he did not have now. These would include authority to reimburse rent control agencies for the cost of decontrolling areas and on other special types of living quarters.

JACKSON DAY: Million Or More

"Happy Harry" Truman had pulled himself up by his own boot straps, grasped the dark cloud of Democratic defeat and stepped it aside to disclose a satisfying silver lining.

Now, party big wigs and adherents are smiling expectantly in anticipation of backing the million-dollar bill. The traditional \$100-a-plate Jackson Day dinners are held in February.

NOTHING SURELY like success, Truman might have reminded his followers—and because of his personal success, money, which was woefully lacking in Democratic party circles before the election, is now expected to come rolling in.

Normally, anywhere from \$600,000 to \$700,000 in raised for the party at the dinner, but this year the national committee thinks it can surpass that figure and come nearer the million-dollar mark.

And they will do it, for many people who wanted no part of Harry Truman during the campaign, and who kept their hands in their pockets, now are willing to give and give generously.

However, careful planning is going into this year's Jackson Day dinner project. The such dinner will be held in every congressional district of the larger states, and at least one in each of the smaller ones.

Plans already have been snapped to set an all-time high record of 3,000 at the Washington dinner. "Of course there are still some like a few in 'Wednesday Democrats,'" a committee said, "but the financial return this year should be terrific."

Chief Killer

Once again the nation's attention was drawn to the heart and blood vessels as the leading cause of death in the United States.

The American Heart Association's 1949 national campaign to head to dramatic the danger to the nation of heart disease is a major concern of those who deal with it.

Great Britain had capitulated, and with the British lion on its side, the new nation of Israel had the two most powerful nations in the world committed to its support.

Others WONDERED if Israel's seemingly wild and unorthodox actions were being taken in the name of the Jewish state, or if they were merely a ploy to attract attention.

ISRAELI AND EGYPTIAN permanent cease-fire talks were under way in the Holy Land to make the two nations available as a place of settlement and nationalization of Jews.

Great Britain had capitulated, and with the British lion on its side, the new nation of Israel had the two most powerful nations in the world committed to its support.

Others WONDERED if Israel's seemingly wild and unorthodox actions were being taken in the name of the Jewish state, or if they were merely a ploy to attract attention.

ISRAELI AND EGYPTIAN permanent cease-fire talks were under way in the Holy Land to make the two nations available as a place of settlement and nationalization of Jews.

Great Britain had capitulated, and with the British lion on its side, the new nation of Israel had the two most powerful nations in the world committed to its support.

Others WONDERED if Israel's seemingly wild and unorthodox actions were being taken in the name of the Jewish state, or if they were merely a ploy to attract attention.

ISRAELI AND EGYPTIAN permanent cease-fire talks were under way in the Holy Land to make the two nations available as a place of settlement and nationalization of Jews.

Great Britain had capitulated, and with the British lion on its side, the new nation of Israel had the two most powerful nations in the world committed to its support.

Weather Vane by Carl Starr

FROST-WITHOUT-FREEZE

FROSTS FREQUENTLY OCCUR WHEN THE AVERAGE TEMPERATURE OF THE AIR OVER A WIDE AREA IS BELOW THE FREEZING POINT. BUT THIS DOES NOT MEAN THAT THE AIR AT THE TOP OF THE TREE CAN BE COOLER THAN THE AIR AT ITS BASE. COOL AIR WILL BE HEAVY AND WILL SETTLER DOWN TO THE GROUND. IN A WINDLESS NIGHT, THIS COOL AIR WILL BE HEAVY AND WILL SETTLER DOWN TO THE GROUND. IN A WINDLESS NIGHT, THIS COOL AIR WILL BE HEAVY AND WILL SETTLER DOWN TO THE GROUND.

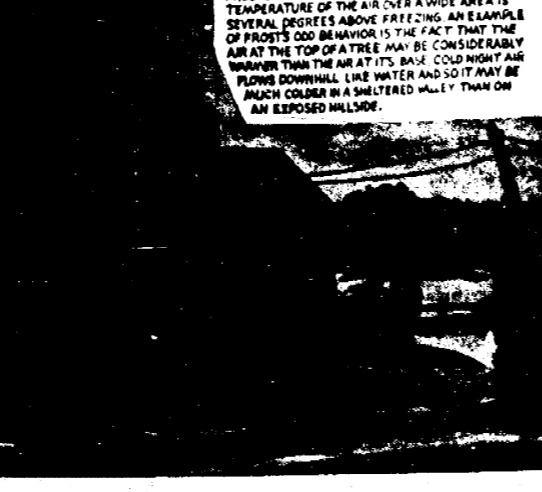


Illustration of a tree with frost on its branches, illustrating the concept of frost without a freeze.

How to Fix It by Tom Gregory

How to Fix It

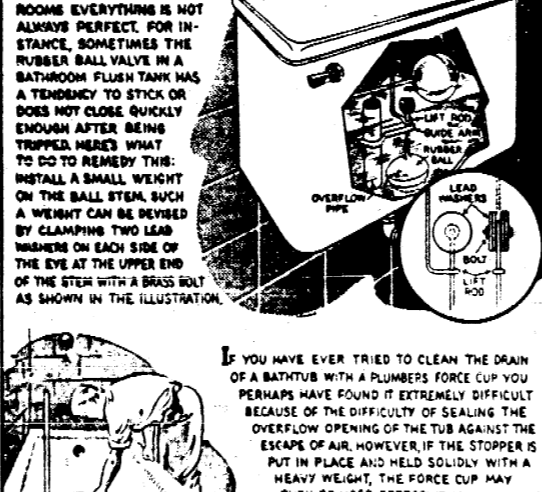


Illustration of a car engine with a label 'How to Fix It' pointing to a specific part.

SPORTSCOPE by JOE MAHONEY

SPORTSCOPE



Illustration of a person in a suit, possibly a politician or sports figure, with a speech bubble.

Didja Hear?



Cartoon illustration of a man and a woman talking, with a speech bubble.

THE HOME TOWN REPORTER IN WASHINGTON

Appraisal of Truman

IN APRIL of 1949 Truman was elected President of the United States. He was elected by a narrow margin, and his administration has been marked by a series of crises and challenges.

Truman's administration has been marked by a series of crises and challenges. He has faced the Korean War, the loss of China, and the rise of the Soviet Union.

Truman's administration has been marked by a series of crises and challenges. He has faced the Korean War, the loss of China, and the rise of the Soviet Union.

Truman's administration has been marked by a series of crises and challenges. He has faced the Korean War, the loss of China, and the rise of the Soviet Union.

Truman's administration has been marked by a series of crises and challenges. He has faced the Korean War, the loss of China, and the rise of the Soviet Union.

Truman's administration has been marked by a series of crises and challenges. He has faced the Korean War, the loss of China, and the rise of the Soviet Union.

Truman's administration has been marked by a series of crises and challenges. He has faced the Korean War, the loss of China, and the rise of the Soviet Union.

Truman's administration has been marked by a series of crises and challenges. He has faced the Korean War, the loss of China, and the rise of the Soviet Union.

Truman's administration has been marked by a series of crises and challenges. He has faced the Korean War, the loss of China, and the rise of the Soviet Union.

Truman's administration has been marked by a series of crises and challenges. He has faced the Korean War, the loss of China, and the rise of the Soviet Union.

Truman's administration has been marked by a series of crises and challenges. He has faced the Korean War, the loss of China, and the rise of the Soviet Union.

Truman's administration has been marked by a series of crises and challenges. He has faced the Korean War, the loss of China, and the rise of the Soviet Union.

Truman's administration has been marked by a series of crises and challenges. He has faced the Korean War, the loss of China, and the rise of the Soviet Union.

Truman's administration has been marked by a series of crises and challenges. He has faced the Korean War, the loss of China, and the rise of the Soviet Union.

Truman's administration has been marked by a series of crises and challenges. He has faced the Korean War, the loss of China, and the rise of the Soviet Union.

Truman's administration has been marked by a series of crises and challenges. He has faced the Korean War, the loss of China, and the rise of the Soviet Union.

Truman's administration has been marked by a series of crises and challenges. He has faced the Korean War, the loss of China, and the rise of the Soviet Union.

Truman's administration has been marked by a series of crises and challenges. He has faced the Korean War, the loss of China, and the rise of the Soviet Union.

Truman's administration has been marked by a series of crises and challenges. He has faced the Korean War, the loss of China, and the rise of the Soviet Union.

GRASSROOTS WRIGHT A. PATTERSON

Of Masters and Men

LABOR IS NOT only labor, it is also capital, spelled with a capital 'C'. It has a large place in what those seeking political support refer to as "special interests."

LABOR IS NOT only labor, it is also capital, spelled with a capital 'C'. It has a large place in what those seeking political support refer to as "special interests."

LABOR IS NOT only labor, it is also capital, spelled with a capital 'C'. It has a large place in what those seeking political support refer to as "special interests."

LABOR IS NOT only labor, it is also capital, spelled with a capital 'C'. It has a large place in what those seeking political support refer to as "special interests."

LABOR IS NOT only labor, it is also capital, spelled with a capital 'C'. It has a large place in what those seeking political support refer to as "special interests."

LABOR IS NOT only labor, it is also capital, spelled with a capital 'C'. It has a large place in what those seeking political support refer to as "special interests."

LABOR IS NOT only labor, it is also capital, spelled with a capital 'C'. It has a large place in what those seeking political support refer to as "special interests."

LABOR IS NOT only labor, it is also capital, spelled with a capital 'C'. It has a large place in what those seeking political support refer to as "special interests."

LABOR IS NOT only labor, it is also capital, spelled with a capital 'C'. It has a large place in what those seeking political support refer to as "special interests."

LABOR IS NOT only labor, it is also capital, spelled with a capital 'C'. It has a large place in what those seeking political support refer to as "special interests."

LABOR IS NOT only labor, it is also capital, spelled with a capital 'C'. It has a large place in what those seeking political support refer to as "special interests."

LABOR IS NOT only labor, it is also capital, spelled with a capital 'C'. It has a large place in what those seeking political support refer to as "special interests."

LABOR IS NOT only labor, it is also capital, spelled with a capital 'C'. It has a large place in what those seeking political support refer to as "special interests."

LABOR IS NOT only labor, it is also capital, spelled with a capital 'C'. It has a large place in what those seeking political support refer to as "special interests."

LABOR IS NOT only labor, it is also capital, spelled with a capital 'C'. It has a large place in what those seeking political support refer to as "special interests."

LABOR IS NOT only labor, it is also capital, spelled with a capital 'C'. It has a large place in what those seeking political support refer to as "special interests."

LABOR IS NOT only labor, it is also capital, spelled with a capital 'C'. It has a large place in what those seeking political support refer to as "special interests."

LABOR IS NOT only labor, it is also capital, spelled with a capital 'C'. It has a large place in what those seeking political support refer to as "special interests."

LABOR IS NOT only labor, it is also capital, spelled with a capital 'C'. It has a large place in what those seeking political support refer to as "special interests."

Woman's World Restyling Helps Add Interest When You Tire of Clothes

By Erta Haley

ABOUT THIS TIME of year, almost every woman can hardly wait for the new season's clothes to come out, and at the same time she has tired of clothes she's been wearing since last fall.

ABOUT THIS TIME of year, almost every woman can hardly wait for the new season's clothes to come out, and at the same time she has tired of clothes she's been wearing since last fall.

ABOUT THIS TIME of year, almost every woman can hardly wait for the new season's clothes to come out, and at the same time she has tired of clothes she's been wearing since last fall.

ABOUT THIS TIME of year, almost every woman can hardly wait for the new season's clothes to come out, and at the same time she has tired of clothes she's been wearing since last fall.

ABOUT THIS TIME of year, almost every woman can hardly wait for the new season's clothes to come out, and at the same time she has tired of clothes she's been wearing since last fall.

ABOUT THIS TIME of year, almost every woman can hardly wait for the new season's clothes to come out, and at the same time she has tired of clothes she's been wearing since last fall.

ABOUT THIS TIME of year, almost every woman can hardly wait for the new season's clothes to come out, and at the same time she has tired of clothes she's been wearing since last fall.

ABOUT THIS TIME of year, almost every woman can hardly wait for the new season's clothes to come out, and at the same time she has tired of clothes she's been wearing since last fall.

ABOUT THIS TIME of year, almost every woman can hardly wait for the new season's clothes to come out, and at the same time she has tired of clothes she's been wearing since last fall.

ABOUT THIS TIME of year, almost every woman can hardly wait for the new season's clothes to come out, and at the same time she has tired of clothes she's been wearing since last fall.

ABOUT THIS TIME of year, almost every woman can hardly wait for the new season's clothes to come out, and at the same time she has tired of clothes she's been wearing since last fall.

ABOUT THIS TIME of year, almost every woman can hardly wait for the new season's clothes to come out, and at the same time she has tired of clothes she's been wearing since last fall.

ABOUT THIS TIME of year, almost every woman can hardly wait for the new season's clothes to come out, and at the same time she has tired of clothes she's been wearing since last fall.

ABOUT THIS TIME of year, almost every woman can hardly wait for the new season's clothes to come out, and at the same time she has tired of clothes she's been wearing since last fall.

ABOUT THIS TIME of year, almost every woman can hardly wait for the new season's clothes to come out, and at the same time she has tired of clothes she's been wearing since last fall.

ABOUT THIS TIME of year, almost every woman can hardly wait for the new season's clothes to come out, and at the same time she has tired of clothes she's been wearing since last fall.

ABOUT THIS TIME of year, almost every woman can hardly wait for the new season's clothes to come out, and at the same time she has tired of clothes she's been wearing since last fall.

ABOUT THIS TIME of year, almost every woman can hardly wait for the new season's clothes to come out, and at the same time she has tired of clothes she's been wearing since last fall.

ABOUT THIS TIME of year, almost every woman can hardly wait for the new season's clothes to come out, and at the same time she has tired of clothes she's been wearing since last fall.

You Build It Children Will Love This Wagon

Empire Waistline

HERE is a gift idea that appeals to everyone. It's a circus wagon plant holder that makes a delightful centerpiece for the table. Try and other small potted plants thrive in this gaily decorated circus wagon.

HERE is a gift idea that appeals to everyone. It's a circus wagon plant holder that makes a delightful centerpiece for the table. Try and other small potted plants thrive in this gaily decorated circus wagon.

HERE is a gift idea that appeals to everyone. It's a circus wagon plant holder that makes a delightful centerpiece for the table. Try and other small potted plants thrive in this gaily decorated circus wagon.

HERE is a gift idea that appeals to everyone. It's a circus wagon plant holder that makes a delightful centerpiece for the table. Try and other small potted plants thrive in this gaily decorated circus wagon.

HERE is a gift idea that appeals to everyone. It's a circus wagon plant holder that makes a delightful centerpiece for the table. Try and other small potted plants thrive in this gaily decorated circus wagon.

HERE is a gift idea that appeals to everyone. It's a circus wagon plant holder that makes a delightful centerpiece for the table. Try and other small potted plants thrive in this gaily decorated circus wagon.

HERE is a gift idea that appeals to everyone. It's a circus wagon plant holder that makes a delightful centerpiece for the table. Try and other small potted plants thrive in this gaily decorated circus wagon.

HERE is a gift idea that appeals to everyone. It's a circus wagon plant holder that makes a delightful centerpiece for the table. Try and other small potted plants thrive in this gaily decorated circus wagon.

HERE is a gift idea that appeals to everyone. It's a circus wagon plant holder that makes a delightful centerpiece for the table. Try and other small potted plants thrive in this gaily decorated circus wagon.

HERE is a gift idea that appeals to everyone. It's a circus wagon plant holder that makes a delightful centerpiece for the table. Try and other small potted plants thrive in this gaily decorated circus wagon.

HERE is a gift idea that appeals to everyone. It's a circus wagon plant holder that makes a delightful centerpiece for the table. Try and other small potted plants thrive in this gaily decorated circus wagon.

HERE is a gift idea that appeals to everyone. It's a circus wagon plant holder that makes a delightful centerpiece for the table. Try and other small potted plants thrive in this gaily decorated circus wagon.

HERE is a gift idea that appeals to everyone. It's a circus wagon plant holder that makes a delightful centerpiece for the table. Try and other small potted plants thrive in this gaily decorated circus wagon.

HERE is a gift idea that appeals to everyone. It's a circus wagon plant holder that makes a delightful centerpiece for the table. Try and other small potted plants thrive in this gaily decorated circus wagon.

HERE is a gift idea that appeals to everyone. It's a circus wagon plant holder that makes a delightful centerpiece for the table. Try and other small potted plants thrive in this gaily decorated circus wagon.

HERE is a gift idea that appeals to everyone. It's a circus wagon plant holder that makes a delightful centerpiece for the table. Try and other small potted plants thrive in this gaily decorated circus wagon.

HERE is a gift idea that appeals to everyone. It's a circus wagon plant holder that makes a delightful centerpiece for the table. Try and other small potted plants thrive in this gaily decorated circus wagon.

HERE is a gift idea that appeals to everyone. It's a circus wagon plant holder that makes a delightful centerpiece for the table. Try and other small potted plants thrive in this gaily decorated circus wagon.

HERE is a gift idea that appeals to everyone. It's a circus wagon plant holder that makes a delightful centerpiece for the table. Try and other small potted plants thrive in this gaily decorated circus wagon.

This Home-Mixed Cough Syrup Is Most Effective

Cough medicine usually contain a large quantity of plain syrup—a good ingredient, but one which you can substitute with a few moments' effort. Or use corn syrup, liquid honey, instead of sugar syrup.

Cough medicine usually contain a large quantity of plain syrup—a good ingredient, but one which you can substitute with a few moments' effort. Or use corn syrup, liquid honey, instead of sugar syrup.

Cough medicine usually contain a large quantity of plain syrup—a good ingredient, but one which you can substitute with a few moments' effort. Or use corn syrup, liquid honey, instead of sugar syrup.

Cough medicine usually contain a large quantity of plain syrup—a good ingredient, but one which you can substitute with a few moments' effort. Or use corn syrup, liquid honey, instead of sugar syrup.

Cough medicine usually contain a large quantity of plain syrup—a good ingredient, but one which you can substitute with a few moments' effort. Or use corn syrup, liquid honey, instead of sugar syrup.

Cough medicine usually contain a large quantity of plain syrup—a good ingredient, but one which you can substitute with a few moments' effort. Or use corn syrup, liquid honey, instead of sugar syrup.

Cough medicine usually contain a large quantity of plain syrup—a good ingredient, but one which you can substitute with a few moments' effort. Or use corn syrup, liquid honey, instead of sugar syrup.

Cough medicine usually contain a large quantity of plain syrup—a good ingredient, but one which you can substitute with a few moments' effort. Or use corn syrup, liquid honey, instead of sugar syrup.

Cough medicine usually contain a large quantity of plain syrup—a good ingredient, but one which you can substitute with a few moments' effort. Or use corn syrup, liquid honey, instead of sugar syrup.

Cough medicine usually contain a large quantity of plain syrup—a good ingredient, but one which you can substitute with a few moments' effort. Or use corn syrup, liquid honey, instead of sugar syrup.

Cough medicine usually contain a large quantity of plain syrup—a good ingredient, but one which you can substitute with a few moments' effort. Or use corn syrup, liquid honey, instead of sugar syrup.

Cough medicine usually contain a large quantity of plain syrup—a good ingredient, but one which you can substitute with a few moments' effort. Or use corn syrup, liquid honey, instead of sugar syrup.

Cough medicine usually contain a large quantity of plain syrup—a good ingredient, but one which you can substitute with a few moments' effort. Or use corn syrup, liquid honey, instead of sugar syrup.

Cough medicine usually contain a large quantity of plain syrup—a good ingredient, but one which you can substitute with a few moments' effort. Or use corn syrup, liquid honey, instead of sugar syrup.

Cough medicine usually contain a large quantity of plain syrup—a good ingredient, but one which you can substitute with a few moments' effort. Or use corn syrup, liquid honey, instead of sugar syrup.

Cough medicine usually contain a large quantity of plain syrup—a good ingredient, but one which you can substitute with a few moments' effort. Or use corn syrup, liquid honey, instead of sugar syrup.

Cough medicine usually contain a large quantity of plain syrup—a good ingredient, but one which you can substitute with a few moments' effort. Or use corn syrup, liquid honey, instead of sugar syrup.

Cough medicine usually contain a large quantity of plain syrup—a good ingredient, but one which you can substitute with a few moments' effort. Or use corn syrup, liquid honey, instead of sugar syrup.

Cough medicine usually contain a large quantity of plain syrup—a good ingredient, but one which you can substitute with a few moments' effort. Or use corn syrup, liquid honey, instead of sugar syrup.

Vertical text on the left margin containing various small notices and advertisements.

Large advertisement for Red Star Special-Active Dry Yeast, featuring images of yeast containers and text describing its benefits for baking.

SHARON

Mrs. Arthur Reichelt and son Robert and Ethel Leinweber of Chicago were guests of Mrs. Phyllis Chawkins and family, Mrs. Reichelt is a sister of Mrs. Chawkins.

Mrs. Lewis Dresselhouse is spending some time with her daughter, Mrs. Cora Nowlin, in Colchester.

The North Sharon Extension Club meeting which was to be held February 8th at the home of Mrs. Donald Irwin has been postponed until February 15th.

The Rowan Corners Extension Club will be held with Mrs. Royal Davison on February 16 at 8 o'clock. Mrs. Harold Steadway and Mrs. Will Lamming will give the lesson on "Adolescence."

Mr. and Mrs. Wallace Sloum and Mr. and Mrs. Claude Miller of Jackson were Sunday callers of Mrs. Sloum's mother, Mrs. Louise Brunette, and family.

Wood was received from Mr. and Mrs. Lewis Albert that they arrived in Phoenix, Arizona, on Monday and that the weather was beautiful there.

The Sharon Hollow Extension Club will meet with Mrs. Ed Schuman on February 16.

FOOTER COMMISSION REPORTS "BEST SELLERS" BEFORE PUBLICATION

The Hoover Commission reports on the recognition of the government are fast becoming best sellers even before the figures come off the presses. The Superintendent of Documents at the Government Printing Office announced today that over 1,700 persons have already placed advance subscriptions for these reports at \$10 for each copy. Over \$1,000 is being received each day from persons placing orders for the reports.

The Hoover Commission was

OUR CHURCHES

IRON CREEK CHURCH
Alvin Brazier, Pastor
Morning Worship 10:30.
Bible School 11:30.
Wm. Shade, Sunday School Supt.

BETHEL EVANGELICAL CHURCH
Freedom Township
T. W. Menden, Pastor
10 a. m. Worship Service.
11 a. m. Sunday School.

ST. JOHN'S EPISCOPAL CHURCH
Jack E. Warner, Lay Minister
Clintons, Michigan
9:30 Service of Morning Prayer and sermon.
Visitors are invited to attend this service.

N. SHARON COMMUNITY BIBLE CHURCH
Sylvan and Washburn Eads.
R. W. Grindall, Pastor
Route 1, Grass Lake, Mich.
Sunday School 10:00 a. m.
Morning Worship 11:00 a. m.
Evening Service 7:30 p. m.

SHARON EVANGELICAL "LITTLE BRETHREN" CHURCH
A. A. Weisert, Pastor
10 a. m. Sunday School.
11 a. m. Morning Worship.
The W. S. W. S. have charge of this Annual Day of Prayer for Missions, with Owen Munro of Jamaica, now a student at the University, as guest speaker.
A cordial invitation is extended to all to attend this service.

EMANUEL CHURCH NOTES
Rev. H. S. Rague
Sunday School at 9:45 a. m.
Morning worship at 11 a. m.
A class of eight adults will be confirmed in this service.
The church council meets on Monday evening.
The Tabernacle will meet on the evening of Thursday, Feb. 17th.

MANCHESTER METHODIST CHURCH
Rev. John Bauer, Pastor
Sunday School at 10 a. m.
Mr. Claude Gage, Supt.
Mrs. Malcolm Hieschler, Superintendent of the Primary Department.
Church Nursery at 11 a. m.
This is held in the parlors of the church for the children of parents who are attending the Morning Worship, and is in charge of Mrs. Leroy Kitchener.
Morning Worship at 11 a. m.
The choir, under the direction of Arthur Gathew, will render special music.
The pastor's sermon theme will be: "The Keys of the Kingdom."
Wednesday:
Choir rehearsal at 8 p. m.
The Woman's Society of Christian Service will meet in the parlors of the church at 2:30 p. m.
Thursday:
Father and Son Banquet at 7 p. m. Speaker, Judge James J. Breakey, Jr. of Ann Arbor.
We extend to all a cordial invitation to attend our services.

authorized by the 80th Congress to conduct a study of the organization of the executive branch of the government and to make recommendations for change. The findings and recommendations of the Commission will be published in from 40 to 50 volumes to be issued at irregular intervals during the next few months. The first report to make its appearance will probably be the over-all report.

In addition to the reports and recommendations, task force studies will also be included in the documents. Among the subjects to be covered are executive services, medical services, public welfare foreign affairs, Post Office, veterans and revolving funds.

ABOUT TOWN

—Mr. and Mrs. Larry Yohn and daughter, Penny, of Ypsilanti spent Sunday with Mr. and Mrs. Harold Alexander.

—Mr. and Mrs. Fred Aber were Sunday dinner guests of Mr. and Mrs. Eugene Bentzschneider.

—Mr. and Mrs. Earl Alber spent Sunday with Mr. and Mrs. Edward Lambarth at Ann Arbor.

—Miss Marian Schwab spent the week end with Mrs. Edith Hauffman at Ypsilanti.

—Mr. and Mrs. Ernest Ambe and family of Jackson spent Sunday with his sister and husband, Mr. and Mrs. Herman Schwab.

—Mr. and Mrs. Bernard Prentice of Munnith called on Mr. and Mrs. LeRoy Halmer, who spent Sunday at Ann Arbor on Sunday.

—Maxine Helmeringer has accepted a position at the Jacobson Store in Jackson.

—Miss Joan Schneider and Herbert Westfall were dinner guests of Mr. and Mrs. John Szabo at Ann Arbor on Sunday.

—Mr. and Mrs. Erwin Paul and family were Sunday dinner guests of Mr. and Mrs. Millard

POCAHONTAS COAL

ORDER YOURS Today!

MANCHESTER SCHAFFER LUMBER AND CONSTRUCTION COMPANY

The Manchester Enterprise Thursday, February 16, 1949

CLINTON THEATER
CLINTON MICHIGAN

Open Daily 6:45 — Sundays 7:45

Thu., Fri. Feb. 10-11
Pat O'Brien in "FIGHTING FATHER DUNNE" "ANGEL ON THE AMAZON" with Gov. Brent, Vera Rolston and Brian Aherne and Cartoons

Saturday Feb. 12
Dead End Kids, Little Tough Guys & "THE LITTLE TOUGH GUYS" Alan Lane in "BANDITS OF DARK CANYON" and Cartoons

Sun., Mon. Feb. 13-14
Margaret Lindsay & Gov. Jimmy Davis In the Big Musical Picture "LOUISIANA" Comedy - Cartoon - News

Tues., Wed. Feb. 15-16
Victor Mature - Carolis Landis in "ONE MILLION B. C." Russell Hayden in "NEATH CANADIAN SKIES" and Cartoons Gene Stratton Porters

The Manchester Enterprise Thursday, February 16, 1949

CLINTON THEATER
CLINTON MICHIGAN

Open Daily 6:45 — Sundays 7:45

Thu., Fri. Feb. 10-11
Pat O'Brien in "FIGHTING FATHER DUNNE" "ANGEL ON THE AMAZON" with Gov. Brent, Vera Rolston and Brian Aherne and Cartoons

Saturday Feb. 12
Dead End Kids, Little Tough Guys & "THE LITTLE TOUGH GUYS" Alan Lane in "BANDITS OF DARK CANYON" and Cartoons

Sun., Mon. Feb. 13-14
Margaret Lindsay & Gov. Jimmy Davis In the Big Musical Picture "LOUISIANA" Comedy - Cartoon - News

Tues., Wed. Feb. 15-16
Victor Mature - Carolis Landis in "ONE MILLION B. C." Russell Hayden in "NEATH CANADIAN SKIES" and Cartoons Gene Stratton Porters

LADY ARMISTERS SAUERKRAUT SUPPER
Wed., Feb. 16
5:30 UNTIL ALL IS SERVED
AT LODGE BOOMS
\$1.00 Per Plate
HOME MADE PIE

St. Valentines Day February 14th

COMPLIMENT YOUR PARTIES WITH ALL THE ACCESSORIES AVAILABLE FROM OUR VARIETY OF STOCK!

PAPER NAPKINS AND LUNCHEON TABLE COVERS 15c

VALENTINE HEART SHAPED CANDIES lb. 35 & 39c

BRACH'S VALENTINE HEART Boxed Chocolates 49, 1.39

AMERICAN GREETINGS Valentines 1c, 2 for 5c 10c and 25c

A VARIETY OF USEFUL AND PRETTY GIFTS AT A RANGE IN PRICE FOR EVERYONE

5c & 10c LANNOM'S \$1.00 up

Compare the Prices & Save

(88.75 SAVING INCLUDED IN ONE SMALL 116 LB. PIG)

116 lb. Dressed Hog	7.50	3 lb. Liver at 35c	\$ 1.05
34c Wholesale Dressed Price	\$11.55	12 lb. Loin at 85c	10.20
		21 lb. Shoulder at 55c	\$11.55
		19 1-2 lb. Hams at 62c	12.00
		16 lb. Bacon at 65c	10.40
		3 lb. Spare Ribs at 50c	1.50
		18 lb. Lard at 25c	4.50
		2 lb. Hocks at 25c	50
		9 lb. Sausage at 50c	4.50
		5 lb. Trimmed Head (for souce or head cheese)	1.00
		108 1/2 lb. (7 1/2 difference represents cracking & feet. These Retail prices quoted as of Jan. 12, 1949. Do not necessarily hold true of today, in view of slackening in hog prices the past month.)	\$53.65

This pig represents a top-quality pig raised by the Cadey farm and processed from farm to Locker by THE MANCHESTER FROZEN FOOD LOCKERS. — "Meat is Our Business" — "We FREEZE to PLEASE!"

Introductory Offer in Fine Frozen Foods

Open Kettle Rendered LARD 18c	2 LBS. LEAN BREAKFAST BACON 35c	Sliced Per Lb. 59c
MEATY—From Little Pigs BACON SQUARES 34c	HOME MADE HEAD CHEESE 39c	
HVY. BREAKFAST BACON 49c	GRADE A HINDS lb. 42c SIDES lb. 40c	

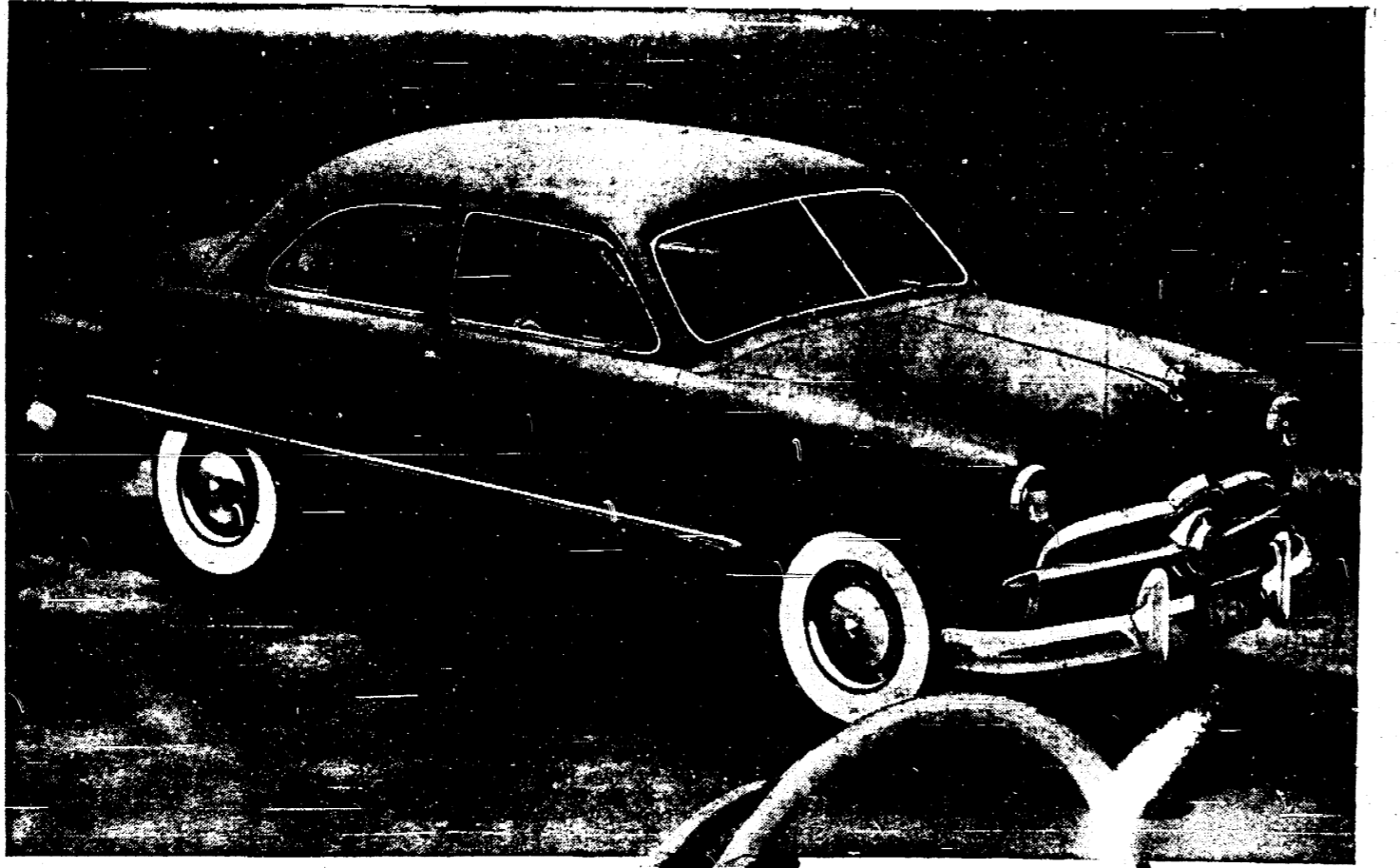
OUR MEAT IS A TREAT

SOME LOCKERS AVAILABLE

Beer and Wine

TO TAKE OUT CHILLED IF YOU LIKE NO ADDITIONAL COST.

MANCHESTER FROZEN FOOD LOCKER



Drive a 49 FORD and Feel the Difference!

You'd expect to pay hundreds more for Ford's new "feel"—the way it steers, the way it rides, the way it gets away! But that's what you get from Ford's Fingerprint Steering, from Ford's new springing ("Hydra-Coil" in front, "Para-Flex" in rear) and Ford's new "Econo-Poise" Engines. Yes, drive a '49 Ford and FEEL the difference!

There's a Ford in your future

Take the wheel...try the new Ford "FEEL" today

Carl M. Schaible, Inc.

512 W. MAIN ST. MANCHESTER—MICHIGAN PHONE—3021

The Manchester Enterprise Thursday, February 16, 1949

ABOUT TOWN

—Mr. and Mrs. Robert A. Bennett and Mrs. C. W. Knapp spent Sunday with Mr. and Mrs. John Hopkins at Toledo.

—Charles Alan, daughter of Mr. and Mrs. Lee Allan had the misfortune to fall from a scooter on which she was riding in the basement of their home on Tuesday. A screw in the scooter cut through the support legging she was wearing cutting her leg just below the knee. She was treated by a local physician who took 12 stitches in the cut.

—Mr. and Mrs. Fay Senmark and daughter, Patricia, of Charlotte on a couple of days last week with Mr. and Mrs. W. First.

—Garold Benninger of Spring Lake spent the week end with his cousin, Mr. and Mrs. Dessel Fuller, and family and accompanied them on a trip to Detroit. Mr. and Mrs. David Gerlick at Bellefontaine.

—Herman Meyer is a patient at Mercy hospital at Jackson.

—Fred Shaver is back at work part time at his jewelry store after a long illness.

—Mr. and Mrs. Edgar Hays of Detroit were week end guests of Mr. and Mrs. Robert Panches.

—Mrs. R. C. Merithew has returned home after spending a week visiting her daughter and husband, Mr. and Mrs. Douglas Watkins at Pontiac. She was at the Taylor Gage home, Patty Gage, who has been ill for the past week, is somewhat improved.

—Charles Wals attended the board of supervisors meeting at Ann Arbor on Tuesday. Mrs.

—Mr. and Mrs. Walter Frey spent Sunday at the home of Mr. and Mrs. H. A. Welling of Jackson.

—Mrs. Marshall Smith and daughter of Detroit spent the week end with her parents, Mr. and Mrs. G. H. Brutsaewischer. Mr. Smith visited his mother, Mrs. M. Smith, at Jackson on Saturday, returning to the Brutsaewischer home to spend Sunday.

—Mrs. Glen Bertie called on Mrs. Elsie DeLano and Charles Stringham at St. Joseph hospital in Ann Arbor on Tuesday.

—Mr. and Mrs. Roy Billmeyer entertained at dinner on Sunday honoring his father Jacob Billmeyer's birthday. Guests were Mr. and Mrs. Charles Wals of Manchester and Mr. and Mrs. Carl Billmeyer and sons of Ypsilanti.

—Mrs. C. H. Seckinger was Thursday dinner guest of Miss Gertrude Walters at Jackson.

—Mr. and Mrs. Marilyn Mings and Dickie and Gull spent Sunday in Dearborn with Mr. and Mrs. William Booser at Dearborn.

—Mr. and Mrs. Ermine Wurster and children of Jackson spent Sunday afternoon and evening with Mr. and Mrs. Frank Higgins.

—Sunday dinner guests of Mr. and Mrs. Fred Patterson were Mr. and Mrs. Roy Randall and family and Mr. and Mrs. Gerald Manchester.

—Mr. and Mrs. Bert Poling of Jackson are recent callers at the Taylor Gage home, Patty Gage, who has been ill for the past week, is somewhat improved.

—Charles Wals attended the board of supervisors meeting at Ann Arbor on Tuesday. Mrs.

VALENTINE'S DAY

GILBERTS CHOCOLATES

VERY BEST PANAMA ALL CREAMS

HEART SHAPED BOXES CHOCOLATES

VALENTINES 1c - 2 for 5c - 3 for 5c Up to 25c

HAEUSSLER'S REXALL DRUG STORE

NEW SYLVAN THEATRE
CHELSEA MICHIGAN

FRIDAY AND SATURDAY FEBRUARY 11-12

"ARE YOU WITH IT?"

Musical Comedy Starring Donald O'Connor, Olga San Juan, Martha Stewart, Lew Parker
Cartoon & Latest News

SUNDAY AND MONDAY FEBRUARY 13-14

"LET'S LIVE A LITTLE"

Comedy Starring Holy Lamarr, Robert Cummings, Anna Sten
Cartoon & Cheating in Gambling
Sunday Shows 3-5-7-9

and THURSDAY TUESDAY WEDNESDAY FEBRUARY 15-17

"KEY LARGO"

Drama Starring Humphrey Bogart, Edward G. Robinson, Laura Rualch, Lionel Barrymore
Cartoon
Shows 7:15 & 9:15

Coming — The Secret Land, Silver River, Loves of Carmen, Three Musketeers.

The Manchester Enterprise Thursday, February 16, 1949

COMPLETE SERVICE

Even the Most Impressive Funeral Services are often Low in Cost!

JENTER'S FUNERAL HOME

HAM SUPPER

NOVELL COMMUNITY CHURCH
THURSDAY, FEBRUARY 17
Proceeds Benefit Novell Women's League
SERVING—5:30 TO 8:00
ADULTS—51 CHILDREN—50c

NEW WASH DRESSES

For Spring

\$2.95 - 3.95 and 5.95

MARX & MARX

C. F. Eisenhauer

DANDY CUP—Reg. or Drip 1Lb. 49c

COFFEE 2LGE CANS 29c

PET OR CARNATION MILK 2 NO. 2 CANS 27c

BEAN SPROUTS 1-LB. CELLO 19c

SYMONS BEST—MACARONI OR SPAGHETTI 2 PEGS. 19c

DIAMOND CRYSTAL SHAKER 2 NO. 2 CANS 35c

KIDNEY BEANS 2 CANS 37c

DEL MONTE WHOLE Kernel Corn 2 14-OZ. BOTS. 37c

DEL MONTE CATSUP 3 BARS 25c

FELS-NAPHA SOAP 12-OZ. JAR 31c

KRAFT VELVET PEANUT BUTTER 12-OZ. JAR 31c

KRAFT VELVET CRUNCHY KERNEL PEANUT BUTTER 2-LB. BOX 79c

KRAFT VELVETA CHEESE

CLASSIFIED DEPARTMENT

BUSINESS & INVEST. OPPOR.

CONCRETE, BRICK, PAINT, etc. ...

FOR SALE ...

CREAMERY ...

DOGS, CATS, PETS, ETC.

FARM MACHINERY & EQUIP.

GARDEN TRACTORS

FOR SALE

FARMS AND RANCHES

BEAL WANTED—MEN

OPPORTUNITIES

HOME FURNISHINGS & APPL.

LIVESTOCK

MISCELLANEOUS

REAL ESTATE—BUS. PROP.

Wonderful Opportunity in Georgia

REAL ESTATE—HOUSES

TRAVEL

HOTEL ROYAL PALM

Buy U. S. Savings Bonds!

Me? I Use Corn Vanish?

WNU—O

KEMP'S BALSAM

KATHLEEN NORRIS

Strength in Optimism

By KATHLEEN NORRIS

Most of the things that make life pleasant don't cost anything. This is a simple truth, but staggering in its significance. It has all the force of that little chamber of steam that moves mighty locomotives. It has the compelling strength of that rapping, powerful little river whose power lights our great towns and throats through our household machinery.

It costs nothing to be agreeable, but if many men and women know that it costs nothing, it costs them a great deal more.

Most persons are not agreeable. They didn't have an example of family pleasantness when they were getting into the world, and they get into the world with a string of discouragements that are hard to break.

Approach is Heistic

One of my neighbors is a fine, unselfish, capable wife and mother. But she is disagreeable. Her voice has an undertone of scorn and contempt. She accomplishes wonders for her family and would die for their welfare; she takes tender care of her invalid mother; she is a true, economic, sympathetic wife.

But her first approach to any subject or plan is hostile.

When Jim Scott gets home at night, he often will start with a string of discouragements that are hard to break.

When Jim Scott gets home at night, he often will start with a string of discouragements that are hard to break.

When Jim Scott gets home at night, he often will start with a string of discouragements that are hard to break.

When Jim Scott gets home at night, he often will start with a string of discouragements that are hard to break.

When Jim Scott gets home at night, he often will start with a string of discouragements that are hard to break.

When Jim Scott gets home at night, he often will start with a string of discouragements that are hard to break.

When Jim Scott gets home at night, he often will start with a string of discouragements that are hard to break.

When Jim Scott gets home at night, he often will start with a string of discouragements that are hard to break.

When Jim Scott gets home at night, he often will start with a string of discouragements that are hard to break.

When Jim Scott gets home at night, he often will start with a string of discouragements that are hard to break.

When Jim Scott gets home at night, he often will start with a string of discouragements that are hard to break.

When Jim Scott gets home at night, he often will start with a string of discouragements that are hard to break.

When Jim Scott gets home at night, he often will start with a string of discouragements that are hard to break.

When Jim Scott gets home at night, he often will start with a string of discouragements that are hard to break.

When Jim Scott gets home at night, he often will start with a string of discouragements that are hard to break.

When Jim Scott gets home at night, he often will start with a string of discouragements that are hard to break.

When Jim Scott gets home at night, he often will start with a string of discouragements that are hard to break.

When Jim Scott gets home at night, he often will start with a string of discouragements that are hard to break.

When Jim Scott gets home at night, he often will start with a string of discouragements that are hard to break.

When Jim Scott gets home at night, he often will start with a string of discouragements that are hard to break.

When Jim Scott gets home at night, he often will start with a string of discouragements that are hard to break.

When Jim Scott gets home at night, he often will start with a string of discouragements that are hard to break.

When Jim Scott gets home at night, he often will start with a string of discouragements that are hard to break.

When Jim Scott gets home at night, he often will start with a string of discouragements that are hard to break.

When Jim Scott gets home at night, he often will start with a string of discouragements that are hard to break.

When Jim Scott gets home at night, he often will start with a string of discouragements that are hard to break.

When Jim Scott gets home at night, he often will start with a string of discouragements that are hard to break.

When Jim Scott gets home at night, he often will start with a string of discouragements that are hard to break.

When Jim Scott gets home at night, he often will start with a string of discouragements that are hard to break.

When Jim Scott gets home at night, he often will start with a string of discouragements that are hard to break.

HOUSEHOLD MEMOS

By Lynn Chambers

START THE DAY WITH A GOOD BREAKFAST

ONE OF THE biggest services which any homemaker can give her family is to feed them a good, substantial breakfast to get them off to work and school with proper energy and good spirits.

After six years as an announcer on "The People," Dan Seymour has become a writer again. The job he holds on "Sing It Again," he will still announce "The Adrich Family" and "Aunt Jenny" to him, all the way through.

Melvin Douglas has distinguished himself as a producer, army officer, the hospital in both World Wars and actor in such stage and screen. After finishing "My Own True Love" at Paramount with Phyllis Calvert, he came to New York to do his big first play in some years, "The Bird Mice." The Douglas family is a bit scattered at the moment. Helen Gahagan Douglas, congresswoman in Washington, the three young ones are in the States.

John McGrath, "John Warner" on CBS "The Station" has been in the States for some time. He is a bit scattered at the moment. Helen Gahagan Douglas, congresswoman in Washington, the three young ones are in the States.

Another way to include cereals in the menu is to cook, chill and try it. This may be served with fruit or breaded meat or with soup.

Another way to include cereals in the menu is to cook, chill and try it. This may be served with fruit or breaded meat or with soup.

Another way to include cereals in the menu is to cook, chill and try it. This may be served with fruit or breaded meat or with soup.

Another way to include cereals in the menu is to cook, chill and try it. This may be served with fruit or breaded meat or with soup.

Another way to include cereals in the menu is to cook, chill and try it. This may be served with fruit or breaded meat or with soup.

Another way to include cereals in the menu is to cook, chill and try it. This may be served with fruit or breaded meat or with soup.

Another way to include cereals in the menu is to cook, chill and try it. This may be served with fruit or breaded meat or with soup.

Another way to include cereals in the menu is to cook, chill and try it. This may be served with fruit or breaded meat or with soup.

Another way to include cereals in the menu is to cook, chill and try it. This may be served with fruit or breaded meat or with soup.

Another way to include cereals in the menu is to cook, chill and try it. This may be served with fruit or breaded meat or with soup.

Another way to include cereals in the menu is to cook, chill and try it. This may be served with fruit or breaded meat or with soup.

Another way to include cereals in the menu is to cook, chill and try it. This may be served with fruit or breaded meat or with soup.

Another way to include cereals in the menu is to cook, chill and try it. This may be served with fruit or breaded meat or with soup.

Another way to include cereals in the menu is to cook, chill and try it. This may be served with fruit or breaded meat or with soup.

Another way to include cereals in the menu is to cook, chill and try it. This may be served with fruit or breaded meat or with soup.

Another way to include cereals in the menu is to cook, chill and try it. This may be served with fruit or breaded meat or with soup.

Another way to include cereals in the menu is to cook, chill and try it. This may be served with fruit or breaded meat or with soup.

Another way to include cereals in the menu is to cook, chill and try it. This may be served with fruit or breaded meat or with soup.

Another way to include cereals in the menu is to cook, chill and try it. This may be served with fruit or breaded meat or with soup.

Another way to include cereals in the menu is to cook, chill and try it. This may be served with fruit or breaded meat or with soup.

Another way to include cereals in the menu is to cook, chill and try it. This may be served with fruit or breaded meat or with soup.

Another way to include cereals in the menu is to cook, chill and try it. This may be served with fruit or breaded meat or with soup.

Another way to include cereals in the menu is to cook, chill and try it. This may be served with fruit or breaded meat or with soup.

Another way to include cereals in the menu is to cook, chill and try it. This may be served with fruit or breaded meat or with soup.

Another way to include cereals in the menu is to cook, chill and try it. This may be served with fruit or breaded meat or with soup.

Another way to include cereals in the menu is to cook, chill and try it. This may be served with fruit or breaded meat or with soup.

Another way to include cereals in the menu is to cook, chill and try it. This may be served with fruit or breaded meat or with soup.

Another way to include cereals in the menu is to cook, chill and try it. This may be served with fruit or breaded meat or with soup.

Another way to include cereals in the menu is to cook, chill and try it. This may be served with fruit or breaded meat or with soup.

Another way to include cereals in the menu is to cook, chill and try it. This may be served with fruit or breaded meat or with soup.

Another way to include cereals in the menu is to cook, chill and try it. This may be served with fruit or breaded meat or with soup.

Another way to include cereals in the menu is to cook, chill and try it. This may be served with fruit or breaded meat or with soup.

Another way to include cereals in the menu is to cook, chill and try it. This may be served with fruit or breaded meat or with soup.

Another way to include cereals in the menu is to cook, chill and try it. This may be served with fruit or breaded meat or with soup.

Star Dust

STAGE SCREEN RADIO

JOHN PAYNE

It was impossible to see more than a few feet ahead. Payne said he had to write manure.

It was impossible to see more than a few feet ahead. Payne said he had to write manure.

It was impossible to see more than a few feet ahead. Payne said he had to write manure.

It was impossible to see more than a few feet ahead. Payne said he had to write manure.

It was impossible to see more than a few feet ahead. Payne said he had to write manure.

It was impossible to see more than a few feet ahead. Payne said he had to write manure.

It was impossible to see more than a few feet ahead. Payne said he had to write manure.

It was impossible to see more than a few feet ahead. Payne said he had to write manure.

It was impossible to see more than a few feet ahead. Payne said he had to write manure.

It was impossible to see more than a few feet ahead. Payne said he had to write manure.

It was impossible to see more than a few feet ahead. Payne said he had to write manure.

It was impossible to see more than a few feet ahead. Payne said he had to write manure.

It was impossible to see more than a few feet ahead. Payne said he had to write manure.

It was impossible to see more than a few feet ahead. Payne said he had to write manure.

It was impossible to see more than a few feet ahead. Payne said he had to write manure.

It was impossible to see more than a few feet ahead. Payne said he had to write manure.

It was impossible to see more than a few feet ahead. Payne said he had to write manure.

It was impossible to see more than a few feet ahead. Payne said he had to write manure.

It was impossible to see more than a few feet ahead. Payne said he had to write manure.

It was impossible to see more than a few feet ahead. Payne said he had to write manure.

It was impossible to see more than a few feet ahead. Payne said he had to write manure.

It was impossible to see more than a few feet ahead. Payne said he had to write manure.

It was impossible to see more than a few feet ahead. Payne said he had to write manure.

It was impossible to see more than a few feet ahead. Payne said he had to write manure.

It was impossible to see more than a few feet ahead. Payne said he had to write manure.

It was impossible to see more than a few feet ahead. Payne said he had to write manure.

It was impossible to see more than a few feet ahead. Payne said he had to write manure.

It was impossible to see more than a few feet ahead. Payne said he had to write manure.

It was impossible to see more than a few feet ahead. Payne said he had to write manure.

It was impossible to see more than a few feet ahead. Payne said he had to write manure.

It was impossible to see more than a few feet ahead. Payne said he had to write manure.

It was impossible to see more than a few feet ahead. Payne said he had to write manure.

It was impossible to see more than a few feet ahead. Payne said he had to write manure.

It was impossible to see more than a few feet ahead. Payne said he had to write manure.

It was impossible to see more than a few feet ahead. Payne said he had to write manure.

It was impossible to see more than a few feet ahead. Payne said he had to write manure.

It was impossible to see more than a few feet ahead. Payne said he had to write manure.

It was impossible to see more than a few feet ahead. Payne said he had to write manure.

Get Well QUICKER

FOLEY'S

ISN'T THIS A WISER WAY? ALL-VEGETABLE LAXATIVE

NATURE'S REMEDY

FUSSY STOMACH?

MUSCLE STRAIN?

SORETONE Liniment's Heating Pad Action

LOOKING AT RELIGION

ROCKET TOWN

LAN SALES THESE NEW CONTRAPTIONS

3-IN-ONE

How to Relieve Bronchitis

KEEPING HEALTHY Stomach Trouble?

CREMOLUMIN

CHANGE OF LIFE?

Watch Your Kidneys!

HEALTH NOTES

DOANS PILLS

MIRROR of your MIND

Humor—a Saving Grace

By Lawrence Guild

Answers: Not in itself. There have been outstanding geniuses who had very little sense of the ridiculous and were quite incapable of laughing at themselves, however childish they behaved.

Answers: Not for long, at any rate, writes Annals A. Rose of Smith College in the Journal of Social Psychology. On the basis of a study of 66 women freshmen in their first five weeks at college, Dr. Rose concludes that "well adjusted" girls, particularly those who have no trouble making contacts with the opposite sex, are not homesick at all.

Answers: Not because of any automatic or instinctive feeling. We like or dislike our relatives, as we do anything else, on the basis of the way they treat us. But because most of us felt more secure with our families as children than we have since, and the stronger our need of security is as adults, the more likely we are to cling to our "blood kin" and feel ill at ease with "strangers." A mature and self-reliant person, on the other hand, will feel closest to the people with whom he has most in common, whether they are relatives or not.

Answers: Not for long, at any rate, writes Annals A. Rose of Smith College in the Journal of Social Psychology. On the basis of a study of 66 women freshmen in their first five weeks at college, Dr. Rose concludes that "well adjusted" girls, particularly those who have no trouble making contacts with the opposite sex, are not homesick at all.

Answers: Not because of any automatic or instinctive feeling. We like or dislike our relatives, as we do anything else, on the basis of the way they treat us. But because most of us felt more secure with our families as children than we have since, and the stronger our need of security is as adults, the more likely we are to cling to our "blood kin" and feel ill at ease with "strangers." A mature and self-reliant person, on the other hand, will feel closest to the people with whom he has most in common, whether they are relatives or not.

Answers: Not for long, at any rate, writes Annals A. Rose of Smith College in the Journal of Social Psychology. On the basis of a study of 66 women freshmen in their first five weeks at college, Dr. Rose concludes that "well adjusted" girls, particularly those who have no trouble making contacts with the opposite sex, are not homesick at all.

Answers: Not because of any automatic or instinctive feeling. We like or dislike our relatives, as we do anything else, on the basis of the way they treat us. But because most of us felt more secure with our families as children than we have since, and the stronger our need of security is as adults, the more likely we are to cling to our "blood kin" and feel ill at ease with "strangers." A mature and self-reliant person, on the other hand, will feel closest to the people with whom he has most in common, whether they are relatives or not.

Answers: Not for long, at any rate, writes Annals A. Rose of Smith College in the Journal of Social Psychology. On the basis of a study of 66 women freshmen in their first five weeks at college, Dr. Rose concludes that "well adjusted" girls, particularly those who have no trouble making contacts with the opposite sex, are not homesick at all.

Answers: Not because of any automatic or instinctive feeling. We like or dislike our relatives, as we do anything else, on the basis of the way they treat us. But because most of us felt more secure with our families as children than we have since, and the stronger our need of security is as adults, the more likely we are to cling to our "blood kin" and feel ill at ease with "strangers." A mature and self-reliant person, on the other hand, will feel closest to the people with whom he has most in common, whether they are relatives or not.

Answers: Not for long, at any rate, writes Annals A. Rose of Smith College in the Journal of Social Psychology. On the basis of a study of 66 women freshmen in their first five weeks at college, Dr. Rose concludes that "well adjusted" girls, particularly those who have no trouble making contacts with the opposite sex, are not homesick at all.

Answers: Not because of any automatic or instinctive feeling. We like or dislike our relatives, as we do anything else, on the basis of the way they treat us. But because most of us felt more secure with our families as children than we have since, and the stronger our need of security is as adults, the more likely we are to cling to our "blood kin" and feel ill at ease with "strangers." A mature and self-reliant person, on the other hand, will feel closest to the people with whom he has most in common, whether they are relatives or not.

Answers: Not for long, at any rate, writes Annals A. Rose of Smith College in the Journal of Social Psychology. On the basis of a study of 66 women freshmen in their first five weeks at college, Dr. Rose concludes that "well adjusted" girls, particularly those who have no trouble making contacts with the opposite sex, are not homesick at all.

Answers: Not because of any automatic or instinctive feeling. We like or dislike our relatives, as we do anything else, on the basis of the way they treat us. But because most of us felt more secure with our families as children than we have since, and the stronger our need of security is as adults, the more likely we are to cling to our "blood kin" and feel ill at ease with "strangers." A mature and self-reliant person, on the other hand, will feel closest to the people with whom he has most in common, whether they are relatives or not.

Answers: Not for long, at any rate, writes Annals A. Rose of Smith College in the Journal of Social Psychology. On the basis of a study of 66 women freshmen in their first five weeks at college, Dr. Rose concludes that "well adjusted" girls, particularly those who have no trouble making contacts with the opposite sex, are not homesick at all.

Answers: Not because of any automatic or instinctive feeling. We like or dislike our relatives, as we do anything else, on the basis of the way they treat us. But because most of us felt more secure with our families as children than we have since, and the stronger our need of security is as adults, the more likely we are to cling to our "blood kin" and feel ill at ease with "strangers." A mature and self-reliant person, on the other hand, will feel closest to the people with whom he has most in common, whether they are relatives or not.

Answers: Not for long, at any rate, writes Annals A. Rose of Smith College in the Journal of Social Psychology. On the basis of a study of 66 women freshmen in their first five weeks at college, Dr. Rose concludes that "well adjusted" girls, particularly those who have no trouble making contacts with the opposite sex, are not homesick at all.

Answers: Not because of any automatic or instinctive feeling. We like or dislike our relatives, as we do anything else, on the basis of the way they treat us. But because most of us felt more secure with our families as children than we have since, and the stronger our need of security is as adults, the more likely we are to cling to our "blood kin" and feel ill at ease with "strangers." A mature and self-reliant person, on the other hand, will feel closest to the people with whom he has most in common, whether they are relatives or not.

Answers: Not for long, at any rate, writes Annals A. Rose of Smith College in the Journal of Social Psychology. On the basis of a study of 66 women freshmen in their first five weeks at college, Dr. Rose concludes that "well adjusted" girls, particularly those who have no trouble making contacts with the opposite sex, are not homesick at all.

Answers: Not because of any automatic or instinctive feeling. We like or dislike our relatives, as we do anything else, on the basis of the way they treat us. But because most of us felt more secure with our families as children than we have since, and the stronger our need of security is as adults, the more likely we are to cling to our "blood kin" and feel ill at ease with "strangers." A mature and self-reliant person, on the other hand, will feel closest to the people with whom he has most in common, whether they are relatives or not.

Answers: Not for long, at any rate, writes Annals A. Rose of Smith College in the Journal of Social Psychology. On the basis of a study of 66 women freshmen in their first five weeks at college, Dr. Rose concludes that "well adjusted" girls, particularly those who have no trouble making contacts with the opposite sex, are not homesick at all.

Answers: Not because of any automatic or instinctive feeling. We like or dislike our relatives, as we do anything else, on the basis of the way they treat us. But because most of us felt more secure with our families as children than we have since, and the stronger our need of security is as adults, the more likely we are to cling to our "blood kin" and feel ill at ease with "strangers." A mature and self-reliant person, on the other hand, will feel closest to the people with whom he has most in common, whether they are relatives or not.

Answers: Not for long, at any rate, writes Annals A. Rose of Smith College in the Journal of Social Psychology. On the basis of a study of 66 women freshmen in their first five weeks at college, Dr. Rose concludes that "well adjusted" girls, particularly those who have no trouble making contacts with the opposite sex, are not homesick at all.

Answers: Not because of any automatic or instinctive feeling. We like or dislike our relatives, as we do anything else, on the basis of the way they treat us. But because most of us felt more secure with our families as children than we have since, and the stronger our need of security is as adults, the more likely we are to cling to our "blood kin" and feel ill at ease with "strangers." A mature and self-reliant person, on the other hand, will feel closest to the people with whom he has most in common, whether they are relatives or not.

Answers: Not for long, at any rate, writes Annals A. Rose of Smith College in the Journal of Social Psychology. On the basis of a study of 66 women freshmen in their first five weeks at college, Dr. Rose concludes that "well adjusted" girls, particularly those who have no trouble making contacts with the opposite sex, are not homesick at all.

Answers: Not because of any automatic or instinctive feeling. We like or dislike our relatives, as we do anything else, on the basis of the way they treat us. But because most of us felt more secure with our families as children than we have since, and the stronger our need of security is as adults, the more likely we are to cling to our "blood kin" and feel ill at ease with "strangers." A mature and self-reliant person, on the other hand, will feel closest to the people with whom he has most in common, whether they are relatives or not.

Answers: Not for long, at any rate, writes Annals A. Rose of Smith College in the Journal of Social Psychology. On the basis of a study of 66 women freshmen in their first five weeks at college, Dr. Rose concludes that "well adjusted" girls, particularly those who have no trouble making contacts with the opposite sex, are not homesick at all.

Answers: Not because of any automatic or instinctive feeling. We like or dislike our relatives, as we do anything else, on the basis of the

Proposed Elementary School Unit



The Enterprise herewith presents the architect's drawing of the proposed new elementary unit for the Manchester...

Public Invited To Attend Vets Farm Program

Several extension meetings for the veterans class in farm training have been arranged by instructor Clyde Hanson...

Arthur Cathey To Give Recital Here Sunday

On Sunday evening, February 20, at the Manchester Methodist Church, Arthur J. Cathey, baritone...

Dutchmen Defeat Clinton To Avenge Earlier Loss

Manchester avenged their second loss of the season Tuesday night when they outscored Clinton 50-42.

Legion Auxiliary Holds Potluck Supper

The Ladies Auxiliary of the American Legion met at their hall for a potluck supper, Tuesday evening, February 15.

Dresselhouse & Davidter To Entertain Farmers Friday

John Deere Day will come to Manchester Friday, February 18th. This day is sponsored by Dresselhouse and Davidter...

Methodist Church To Hold Father & Son Banquet

The Manchester Methodist Church will hold a Father and Son Banquet tonight (Thursday) at 7:00 p. m.

PTA Will Hold Founder's Meet Monday Night

The annual Founder's Day meeting of the Manchester PTA will be held next Monday evening, February 21, 1949.

Funeral Services Held Sunday For Anna Tracy, 94

Funeral services were held Sunday afternoon for Mrs. Anna Alsted Tracy, aged 94 years, who passed away at the Colonial Manor Convalescent Home...

Plastic Hearts Invite You To Help Fight Heart Disease

Bright red plastic hearts, big enough to hold many a coin and bill, have appeared on store counters and in public telling places...

Attend Funeral

Those from Manchester who attended the funeral of Clinton Faust at Milan at the Stevens and Ruth Funeral Home on Saturday were Mrs. M. Wolfe, Mrs. Carl Schwab, Mrs. Chas. W. Warner, Mrs. Art Bus, Mrs. Edith Snyder, Mrs. E. M. M. Herman, Mrs. Albert Wellhoff and Mrs. Mabel Wolley.

LETTERS TO THE EDITOR

Dear Editor: Reading the verbal brickbats gently waited across the pages of your Enterprise weekly by Mr. Blarney, etc., makes one wonder if there shouldn't be a few items on the credit side of the ledger.

Where can one be better entertained and kept up with local news than the local barber shop. Only constructive criticism we might make would be to add some more versatile reading material. It is quite true that many are vitally interested in the entertaining adventures of Superman, Dick Tracy and the gals with the scanty attire, but the writer does enjoy thumbing thru an ancient copy of LIFE or a comparable magazine while waiting to be shaved. Perhaps if each of us did a magazine out of the basement on our bi-weekly trip and leave it on me eventually have our own readers club.

With justifiable pride we point to the fact that you can leave your car unlocked and go shopping without coming back with a car to come home in. You'll be lucky to find a car to come home in. We will have to admit that if you don't close the doors on the car, you're liable to have the car to come home in.

Dear Editor: The Democrats have informed us in their campaign that there was no mail on the hoof under Republican Domination.

I am a teenager and a constant reader of The Manchester Enterprise for approximately three years. Reading your Editor-Blarney

MANCHESTER'S two banking institutions will be closed on Tuesday, February 22, in observance of Washington's birthday.

A HANDFUL of carpenters accomplished what millions of Republicans couldn't gettin' done. They moved the White House, Livingston County, Pa.

Don't miss letter No. 2 in "Letters to the Editor."

We believe that parallel parking east from the Main Street bridge to the intersections of Ann Arbor and Riverside Streets would eliminate much of the traffic hazards at said corner.

Don't forget that Monday night is Caucus night.

Louise Strable, 70 Taken By Death

Mrs. Louise N. Strable, 70, wife of Herman Strable, died late Thursday night in her home at 253 Harrison St., Chelsea. She had been in poor health for the past 20 years.

She was born on July 11, 1878 in Leitz, Germany, a daughter of Fred and Louise Toelle. She married Mr. Strable in Manchester on December 2, 1896 and they lived on a farm in Sharon township from that time until 1948.

She was a member of St. Paul's Evangelical and Reformed church of Chelsea. Funeral services were held at 2 o'clock Monday afternoon in the Miller Funeral Home in Chelsea with Rev. P. H. Grabowski officiating and burial was in Oak Grove cemetery.

Survivors include two sons, Aron Strable of Sharon township and Tomer Strable of Flint; one daughter, Miss Ruth Strable of Jackson and one brother, Fred Toelle of Manchester.

BROWNIE SCOUTS TO MEET MARCH 1

The Brownies met Tuesday afternoon with twenty-three Brownies present and two visitors. They are working on a project of health in general, and simple first aid methods. Celebrating their birthdays, Laura Ullhaus and Josephine Coe brought a gift of candy for the group.

The next meeting will be held at the home of Mrs. Lee Allan on March 1.

EUCRE PARTY

A Eucree party will be held Monday evening at the Masonic Hall for Masons and their invited guests.

The Manchester Enterprise Thursday, February 18, 1949

HAVE YOUR AUCTION BILLS PRINTED BY THE MANCHESTER ENTERPRISE

Free Estimates

ELECTRICAL WIRING AND REPAIR Short's Electric Service Phone Manchester 3121

COMPLETE INSURANCE SERVICE Automobile a Specialty ALL FORMS OF LIABILITY SYD LEEMAN DIAL-3421

Dr. R. M. Sanwald Optometrist

VISION ANALYSIS CONTACT LENSES VISION TRAINING

1168 National Bank Building Telephone 28300 Jackson, Mich.

New Oliver '99' TRACTOR With Plow

REO SALES AND SERVICE Clinton Oliver Sales

1-2 Mile West of Clinton On US-112

MANCHESTER DRUG PHONE-4721

FOUND IN STOCK A QUANTITY OF DR. WEST TOOTH PASTE - 2 1/2 TUBE THIS IS A DISCOUNTED SIZE NOW WHILE IT LASTS 15c Per Tube

Watch This Space for SALE Prices on Special Merchandise and Discontinued Items!

SCHRAFFTS VALENTINE CANDY JEWELRY - COMPACTS - GIFTS

INSURE YOUR LIVESTOCK!

Give them a steady diet of our famous brand enriched feed and see how healthy they stay! How quickly they thrive!

ORDER FERTILIZER NOW

E. G. MANN & SONS MANCHESTER BRIDGEWATER

MANCHESTER EXTENSION POSTPONES MEETING

The Manchester Extension group have postponed their regular meeting until a later date. However, the ladies are planning a card party for the members and their families to be held February 18th at the home of Mr. and Mrs. Lowery.

CARD OF THANKS

I wish to thank my many friends for the beautiful cards and presents; also Mrs. Laurel Bretzweiser and great-granddaughter, Mrs. Robert Sears for their beautiful birthday cakes. Mrs. Emma Bennett.

KEEP CHAFF FROM WOOL

Considerable damage can be done to next spring's wool crop if chaff and other foreign material are allowed to get in the fleece, warns Graydon Blank, MSC extension animal husbandry specialist.

OBSESSES BIRTHDAY

On Saturday Mrs. Mary Merriman observed her birthday. Guests were present from Ypsilanti. Mrs. H. P. James and her committee served refreshments.

BLARNEY

'What's made our small town Doc's today. So greedy—unsympathetic shall we say. Why now 'tis just a crime you know To ask for help without the 'ough!'

'And, too, you should be always fit. To make an office call and sit. In case you're lying flat on your back You may get help if you've got the 'ack!'

'And, too, the time must be just right. Not Thursday—and not in the night. Oh, all these things must be just so. Can't after all—they're 'in the know!'

'I wonder if they really know. The terrible feeling that they know. Among the people in their town Who can't get help when they are down.

'Yes, we thank God that there are some. Of those whose job is never done. In that profession, who can say My job is not done, at any one day.'

TOWNSHIP CLUB

The Township Club will hold its next meeting on Thursday, February 17, at the Manchester High school at 5:00 p. m.

chargeable to 1948, are reported. The present figure represents an increase of 30, or two percent more than the 1,447 killed in 1947.

The records also show a total of 4,0413 persons injured in 1948, an increase of 2,781 or two percent over 1947. Accidents totaled 138,864, an increase of 2,400 or two percent.

Despite recent fatality figures, it still appears that the death rate for 1948 will be less than eight persons per 100 million miles of travel, which would be the lowest on record for Michigan.

Monthly Traffic Toll In December Worst Since '47

Michigan's monthly traffic accident toll during the month of December was one of the most bleak in recent years, according to a report released by Commissioner Donald B. Leonard, of the State Police.

Each day an average of six persons met death, the total for the month being 194. This was the worst record of any month since November of 1941, when 219 lost their lives, and it exceeded December of 1947 by 49, or 30 percent.

The injury total climbed to 3,661, an average of 128 each day and the greatest number for any month of the year. This total exceeded December 1947 experience by 562 or 17 percent.

But conversely, while there was an alarming increase in deaths and injuries, there was a decrease in accidents. During December of 1948, 13,827 accidents were reported, which was 1,809 fewer, or 11 percent, than the 15,636 in December of 1947.

The reduction was attributed to better than normal driving conditions with less ice and snow. These same conditions, however, contributed to the distribution and severity of the accidents which did occur.

Most of the fatality increase was recorded on the rural county road system, 47 persons being killed as compared to 19 in December of 1947.

On the basis of present figures, the death toll for all of 1948 stands at 1,477 persons. This exceeds previous estimates and the total is expected to be higher when delayed deaths

PAINTING: Interior or Exterior Spray Painting; Paper Hanging. We are equipped for any job large or small. Jobby and Baughy, Box 526, Tecumseh, Mich. Phone Tecumseh 13-M.

FOR SALE—Universal Electric range good condition. Phone 3363.

LADIES: You can get the latest style Hats in your own home town. Already have new Spring style. Mattie Swift 21-4

BROOKLYN CONCRETE PRODUCTS—Concrete and Cement Blocks, all sizes. Immediate Delivery. Phone Brooklyn 45-46

ORDER YOUR MATERIAL NOW FOR YOUR SPRING UPHOLSTERY.—Brooklyn Furniture Company, Custom Upholstering our Specialty. Arcade Hotel Bldg., basement phone Brooklyn 2-3502—Brooklyn, Mich. 18-4

RADIOS Repaired. Efficient Service. Will pick up and deliver. Robert Treat. Ph. 4111. 19-3

FOR SALE—Baby Bed with mattress; High Chair. Ph. 2912. 20-2

PAINTING and PAPERHANGING—FREE ESTIMATES—For information call Widmayer's Hardware Store. 20-4

FOR SALE—GE Electric Table Top Stove, \$50. Ph. Napoleon 451. Mrs. C. Kendall. 20-2

FOR SALE—1946 3-ton Chevrolet Truck. Aston Fieldcamp. Phone 2165. 21-1/2th

FOR SALE—35 Plymouth coach. Phone 5333. 21-1

FOR SALE—1948 V-8 4-ton Pick-up. Albe Lackhardt. Wampler's Lake. 21-2

FOR SALE—48 Jeep, power take-off pulley, weights, speed light, heater and grill guard, less than twenty thousand miles, clean. William Kennedy. Phone 4036. 21-1

HOME WANTED for two black female puppies, five weeks old. Robert Punched. 21-1

SALE—Baby carriage, perfect condition. 518. Phone 4703. 21-2

Wanted for Ford and Chevrolet tractors. Wiedeman Tractor Sales. Saline, Mich. 21-2

SAVE TIME SAVE MONEY BY SHOPPING AT

C. F. Smith Store

Dinner Rolls 15c

SPICED ONIONS 12c

FRESH SAUSAGE 39c

FRESH POTATOES 45c

FRESH ORANGES 39c

COURT HOUSE 46-OZ. CAN

Orange Juice 25c

WE BUY EGGS

Don's DAIRY BAR Fish Fry Friday 65c

TAKE HOME FISH FOR THE FAMILY A Complete Order—Only 60c

WHILE IT LASTS—One Can of Chocolate Syrup FREE with each Quart of French Vanilla Ice Cream.

MCDONALD ICE CREAM

IT'S A DELICIOUS DESSERT. TAKE HOME ONE OF OUR CHEERY ICE CREAM PIES.

BUTTERSCOTCH REVEL - FRENCH VANILLA

FRESH STRAWBERRY GALLONS and HALF GALLONS

MICHIGAN MADE PURE SUGAR

has no superior!

Get best results—by using sugar at its best for every sweetening purpose. Always insist upon one of these quality brands.

ORDER FERTILIZER NOW

E. G. MANN & SONS

MANCHESTER BRIDGEWATER