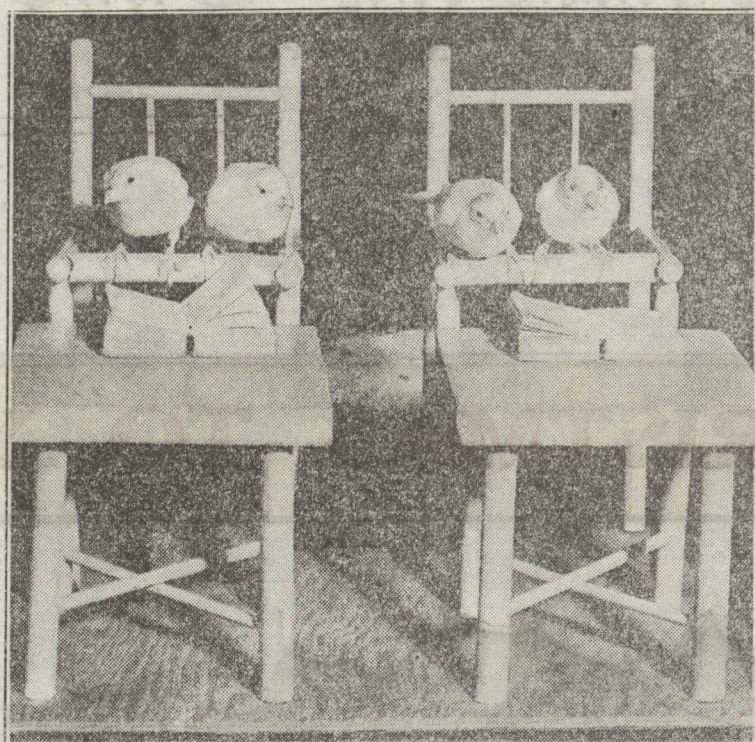




Mrs. Edna Long with a few of her pet canaries. She has trained them to perform sixty-five different tricks. (Acme photos.)

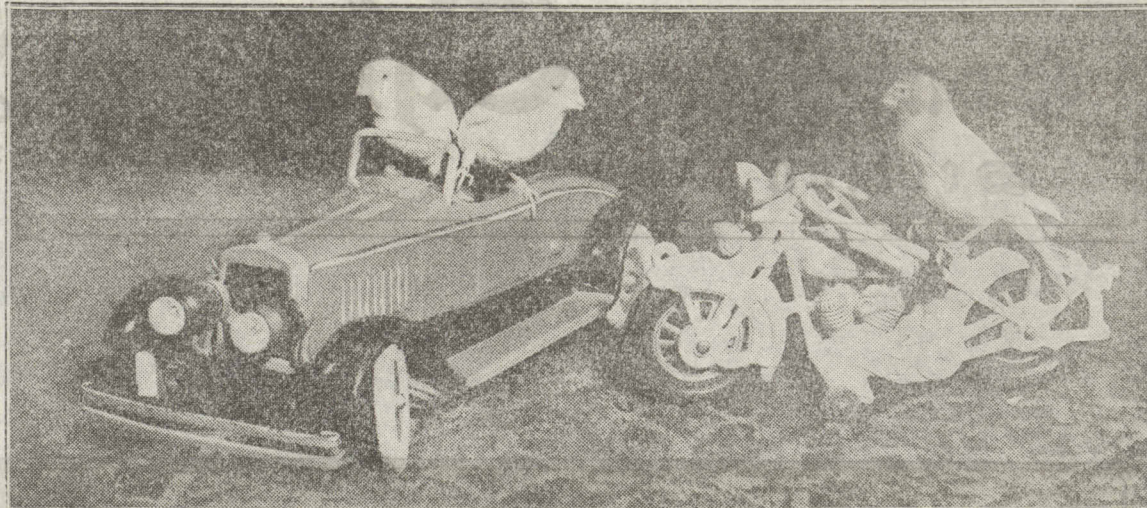
## THESPIAN CANARIES



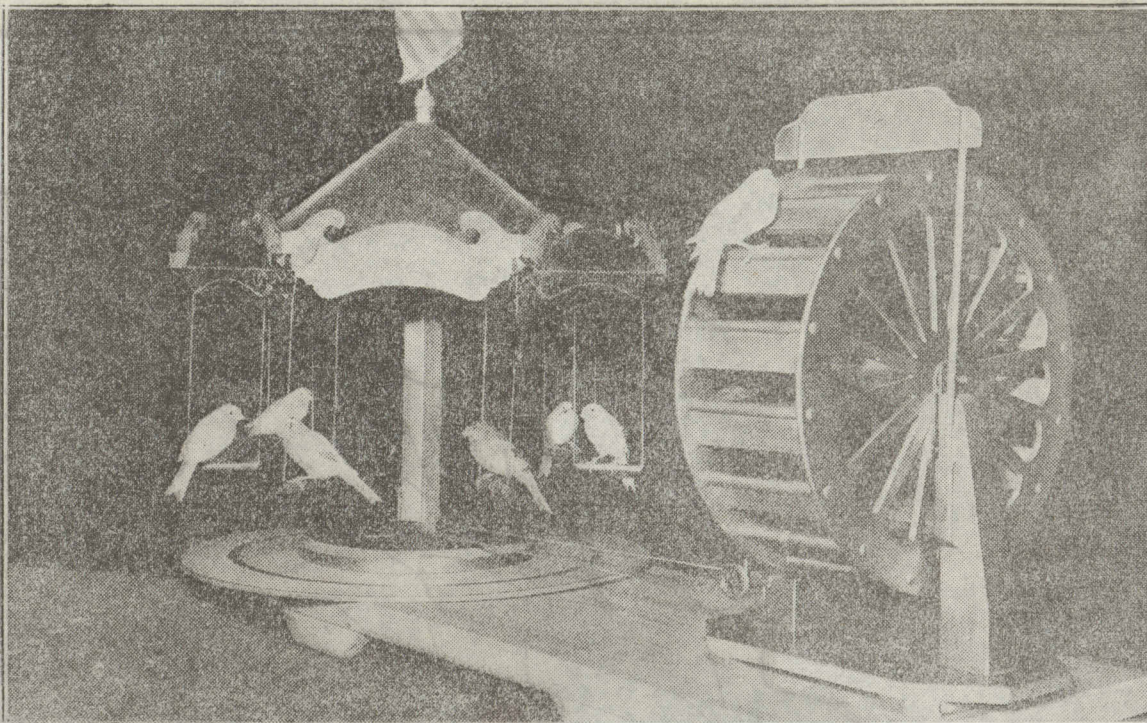
Singing is only one of the many accomplishments of these trained canaries. Here you see four of them apparently reading a lesson in school.

THESE canary birds are actors as well as singers. They belong to a merry troupe of entertainers in the home of Mrs. Edna Long in Los Angeles. She trained them to perform sixty-five different tricks, some of which are shown in the accompanying pictures. The most amazing individual performance by a member of Mrs. Long's colony of feathered actors is a perfectly chirped rendition of "Yankee Doodle."

All of Mrs. Long's canaries sing well, and they seem to enjoy immensely the tricks she has taught them. When she wants them to perform she merely provides the necessary properties, such as the chairs and tables, or the tiny automobile and motorcycle shown above. The birds assume their respective roles immediately and, when enacting a tableau, hold their poses until Mrs. Long signifies the show is over. In certain of the scenes the birds sing in chorus, and, according to their trainer, the canaries seem to know they are taking part in a play. As may be surmised, it required many long hours of patient work on the part of Mrs. Long to train the birds.

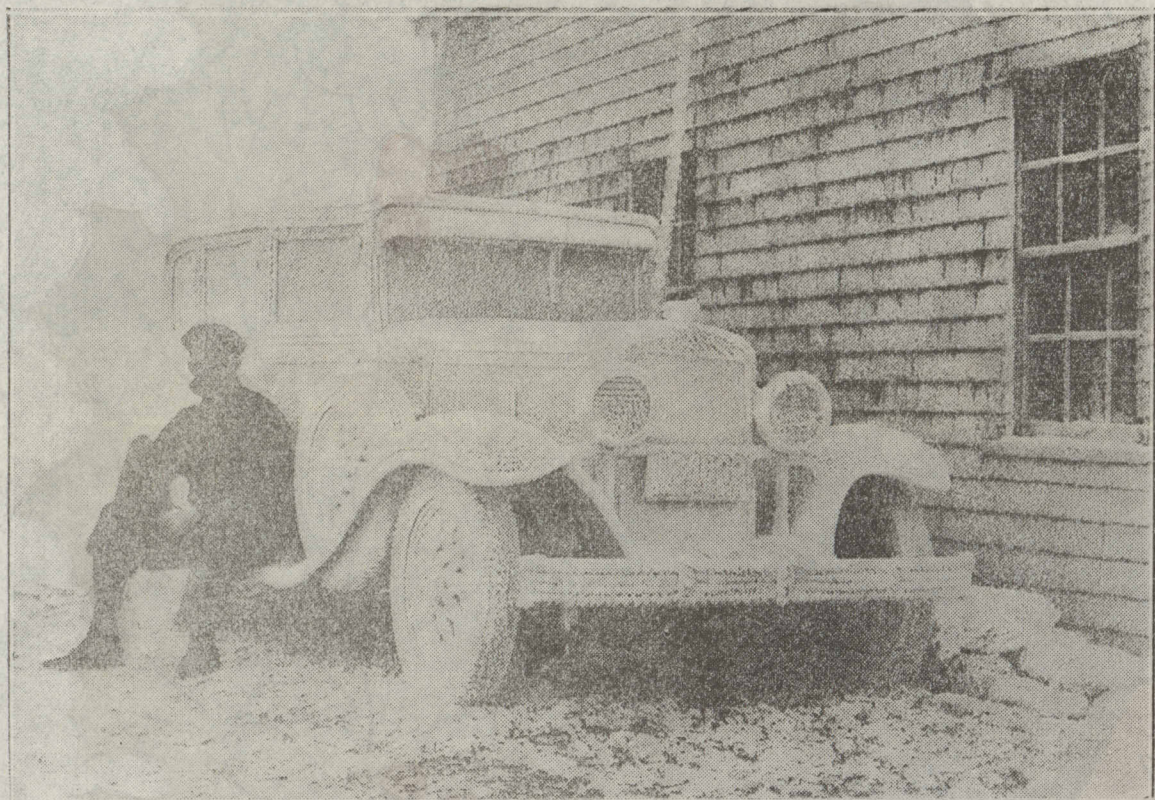


This motorcycle policeman is no "sparrow" cop. He has caught Mr. and Mrs. Canary speeding and seems to be asking, "Where's the fire?" This is only one of many tableaux performed by Mrs. Long's canaries.



Power, supplied by the bird on the rotating wheel on the right, keeps the avian merry-go-round whirling merrily. The worker hops from step to step and enjoys it as much as the birds that ride.

## JACK FROST PAINTS A MOTOR CAR

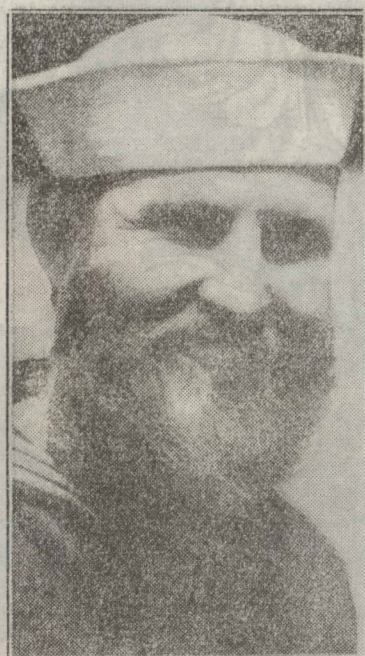


(Acme photo.)

THIS car looks as if it had been sprayed with water in freezing temperature, which is about true, except that nature did the spraying. The car was parked all night on the summit of Mount Washington, New Hampshire, 6,288 feet above sea level. Frost was formed like a coat of white paint by eddying gusts of wind and clouds. Driving a car up the

steep mountainside is quite a feat of automobile driving. Mount Washington, located in Coos county, is the highest peak of the White mountains, which are a continuation of the Appalachian chain. Mount Washington is the principal peak of the Presidential range of the White mountain system. On its summit is located the noted weather observatory.

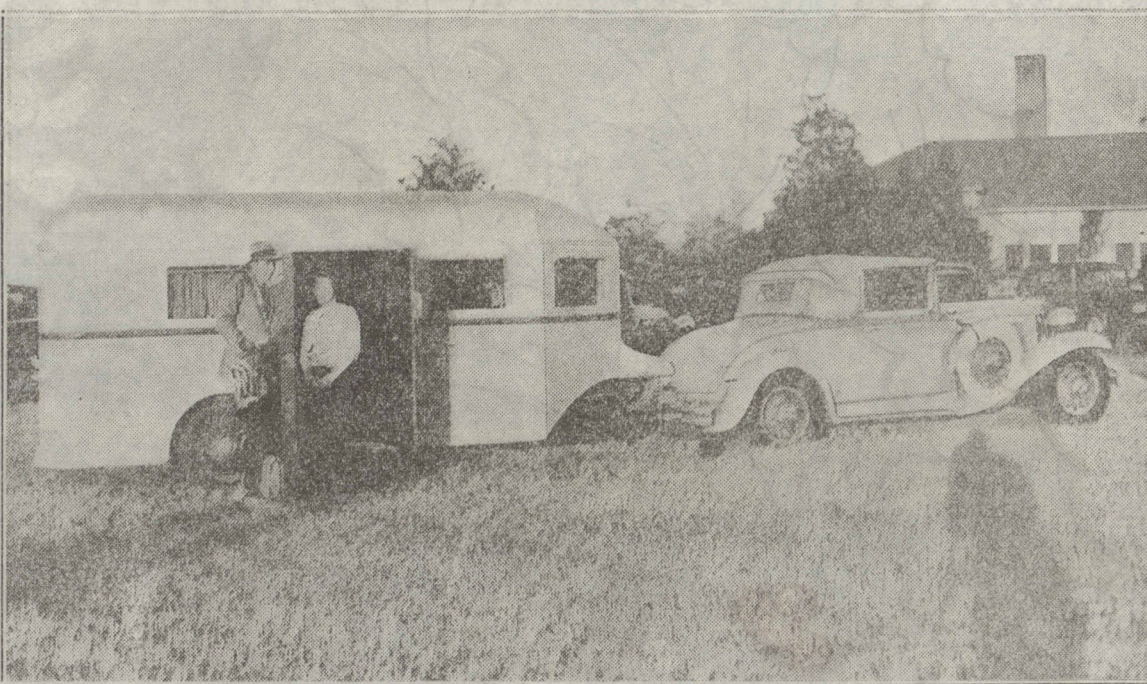
## ALIBI WHISKERS IN THE NAVY



(Acme photo.)

K. W. STOVER, seaman on the battleship New York, has the distinction of being the only member of the navy enlisted personnel now wearing a full grown beard. His shipmates say that Stover forgot to shave one morning and at inspection gave the alibi that he was growing a beard. Then he had to make good the alibi.

## GOLF STAR AND WIFE "AT HOME"

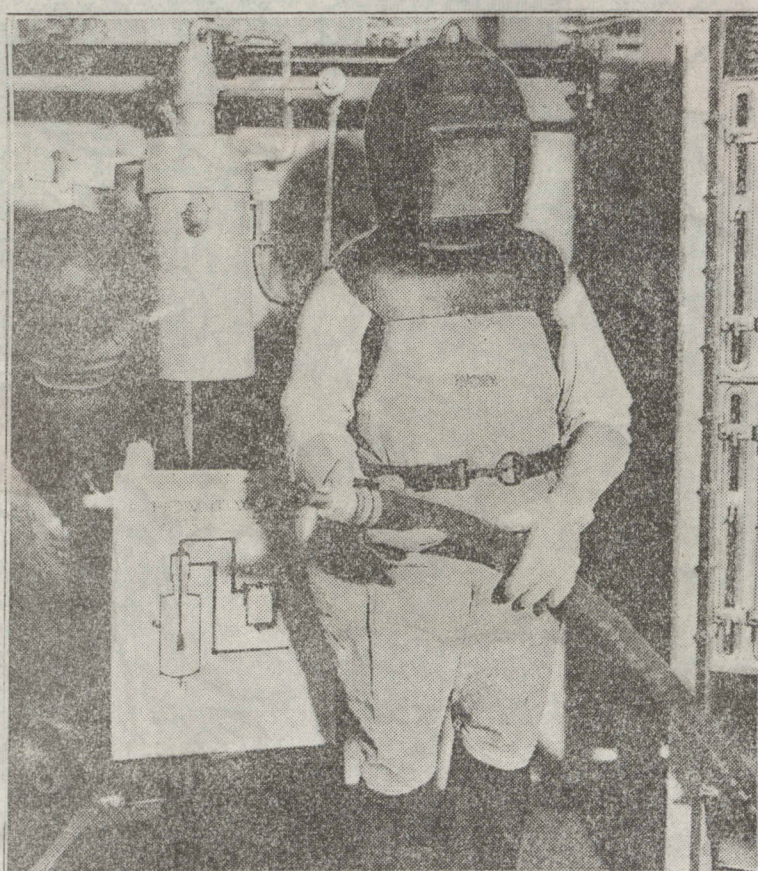


(Acme photo.)

GOLF professionals who go in for championship competition find it impossible to spend very much time at home. One of them, however, Roland Mackenzie, former amateur star, who recently joined the professional ranks, has solved the problem satisfactorily by taking his home along with him in the form of an automobile trailer. With Mrs. Mackenzie, the golf star travels all over the country to take part in tournaments; but no matter where they go, the family residence always is parked somewhere near by. Mackenzie says elimination of the neces-

sity of traveling on trains at frequent intervals is another big advantage of his system. The above picture shows Mr. and Mrs. Mackenzie beside their trailer cottage shortly after they arrived at Pinehurst, N. C., popular winter golf resort. Although it is seldom necessary for them to cook and serve meals en route, the trailer is provided with kitchen equipment. The trailer is roomy and comfortably furnished. It is a bungalow on wheels, ideal for the sort of life which a competing golf star must lead if he is to take part in a fair share of matches.

## ARMOR FOR SANDBLASTERS



(Acme photo.)

SANDBLASTING, the method often used to clean the exteriors of city skyscrapers, will be less dangerous to workmen equipped with the helmet pictured above. It was exhibited at the fourteenth Exposition of Chemical Industries in New York. J. H. Pangborn is wearing the new helmet, which protects the eyes and faces of sandblasters from the effects of silicosis, a condition frequently resulting from doing this type of work without adequate protection. The newly developed protective armor resembles somewhat a deep-sea diver's outfit.

## CARRYING THE AFRICAN WOMAN'S BURDEN

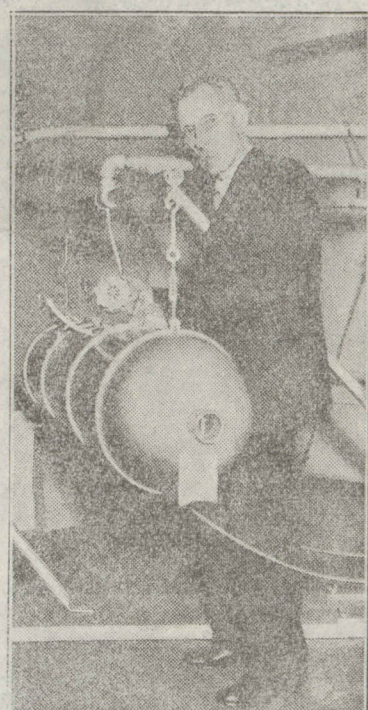


(Acme photo.)

HARD manual labor is performed uncomplainingly in Libreville, French Equatorial Africa, by the native women. Two of them, carrying heavy bags of produce to market, are pictured here. To ease the load a band fastened to the bag is adjusted over the heads of the women. Imagine doing this kind of work in the heat of the equatorial climate! Much scientific research has been carried

on to determine the effect of tropical climates on the white man. Usually it is observed that native populations thrive on hot weather. Quite a few scientists are coming to believe that one of the chief reasons is that the natives keep active at hard labor. White men who keep active in such climates also seem healthier than those who do not. Idle white men in the tropics easily contract fever.

## INVENTS NEW TYPE OF AIRCRAFT



(Acme photo.)

C. R. MINER, inventor, is shown with a model of his new lighter-than-air craft, which maintains elevation by means of specific gravity of air inside the container differing from that outside. He exhibited the model at the National Inventors' congress, held at Cleveland, O. Many strange devices were on display, the collection including almost every type of "improved" vehicle and household utensil.



Pain disappears faster—"Ben-Gay" penetrates deeper—stays in longer

You can kill the ripping pains of neuralgia and headache with "Ben-Gay," the original Baume Analgesique. Rub on a generous quantity—in a few seconds, it penetrates through skin and muscle to the pain spot itself—it stays there until the pain is banished. This remarkable hyposensitizing (pain relieving) action of "Ben-Gay" has caused many imitations to appear. Anyone who once uses "Ben-Gay" never accepts imitations—they simply do not get at the pain the way "Ben-Gay" does. Be sure to get the box with the red "Ben-Gay."

RUB PAIN AWAY WITH  
**BAUME "BEN-GAY"**  
IT PENETRATES

Chicago Sunday Tribune