

## REPORTS ILLINOIS HIGHWAYS NEED A FACE LIFTING

Shows Need for Repairs to 442 Miles.

BY HERBERT R. ANDERSON  
[President, Illinois Road Builders' Assoc.]  
Whether we like it or not, road building has just started in Illinois. Illinois is far behind in its program for reconstructing its highways. Basically it has all the necessary mileage. But much is in need of face-lifting.

Unite Needing Attention.  
The mileage needing immediate attention [since Jan. 1, 1937] and estimated cost:

Should be rebuilt, 198 miles.....\$ 9,371,000  
Should be widened, 108 miles.....\$ 2,232,000  
Should be relocated, 139 miles.....\$ 6,147,000  
Total miles involved, 445.....  
New bridges involved, 170.....2,765,000

Total cost.....\$20,515,000  
Officials estimate 1,197 miles should be reconstructed within five years. With what now is needed, this means 1,639 miles will have to be built, widened, or relocated within five years—an average of 328 miles a year.

In 1938 only 70 miles were reconstructed.

Instead of catching up with our highway needs, the gap between what we are doing and obsolescence, traffic requirements, and safety is widening.

Diversion Causing Trouble.

Poor highway and street systems causing traffic delays, dangers, and higher operating expenses won't be tolerated long by motorists.

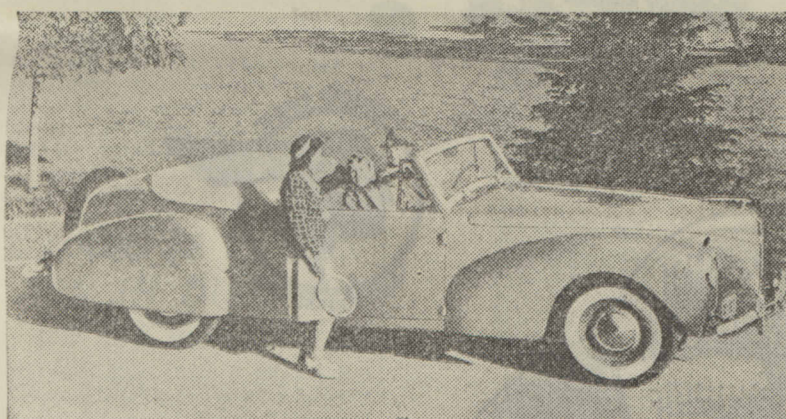
Solution of this impasse is a problem. However, one answer is found in halting tax fund diversion. The motor fuel tax was imposed with a pledge that it would be expended for the benefit of motorists. That pledge has been broken to the extent of \$6,356,250 for the coming year.

We can't do anything about present diversions. They are law. But motorists can prevent any future diversions when new diversion laws are proposed.

How Patches of Ice Can Break Your Rear Axle

Intermittent patches of ice are apt not only to cause skidding on the highway but also to break a rear axle. When automobile wheels suddenly strike clear pavement after they have been spinning on ice, a great shock is thrown on the driving mechanism.

### Lincoln-Zephyr Continental Cabriolet



A Lincoln-Zephyr Continental Cabriolet. Its hood is 7 inches longer than the standard model and the entire car is 3 inches longer. It has a dash of the European boulevards.

The Lincoln-Zephyrs which are being displayed at the automobile show this year include many new features, says Daniel R. Ganev, in charge of Lincoln-Zephyr sales for the Chicago region.

With its streamlining accentuated, the 1940 models are considerably different in appearance from previous models. The new Lincoln-Zephyr is large, more beautiful and powerful.

The front appearance has been changed to a marked degree by a lower hood, which extends further forward, and a new grille and ornament. Interiors have been completely restyled. A new instrument panel has dials and gauges grouped in front of the driver.

Seats are chair height, deeply cushioned with soft edges. Cushions are built up with individually wrapped springs. The floor board is low and passengers step directly into the car.

Running boards have been eliminated. Floors extend all the way to the doors.

Driving vision has been increased thru the use of 22 per cent more glass area. The windshield, unbroken by a middle support, is deeper and has 105 square inches additional glass area. Windows are substantially wider and deeper. The large rear window is of one piece tempered glass curved to the body lines.

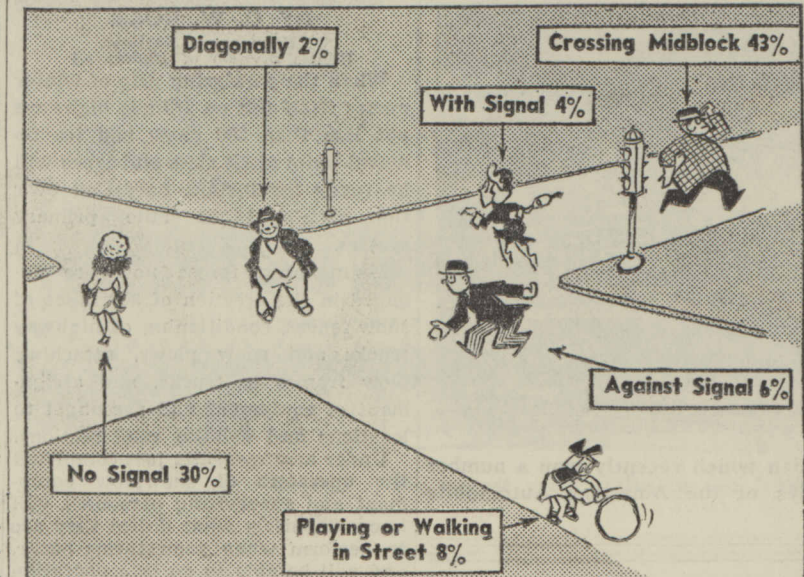
The 12 cylinder engine has been stepped up to 120 horse power, but its economy is retained. Among the improvements are a new controlled ventilation system and sealed beam headlights.

Add Two New Body Types.

Two new body types have been added. These are a club coupe and a continental cabriolet. In addition there are a sedan with four doors, town limousine, coupe, and six passenger convertible coupe. Tops which operate automatically are supplied in the convertible coupe and continental cabriolet.

The latter is different in styling from other cars in the line, its hood being 7 inches longer. The new club coupe is a close-coupled type. Behind the divided front seat is another seat the full width of the car. In the coupe two opera seats may be factory installed, at extra cost, in place of the luggage space and shelf back of the seat.

### How Pedestrians Are Killed



This cartoon shows what walkers are doing when they are killed by automobiles. The percentages are based upon Chicago police department records of the city's motor toll.

BY LESLIE J. SORENSON

[Chicago Traffic Engineer.]  
Last year motor vehicle fatalities in the United States decreased 19 per cent under the previous year. Pedestrian deaths, however, constituted more than 65 per cent of the total traffic deaths in cities with more than 10,000 population and are increasing at an alarming rate in rural areas.

Last year 12,500 pedestrians were killed and 275,000 suffered injuries in the United States. Of those killed on city streets, a vast majority were violating traffic regulations or committing other unsafe acts.

Large numbers were killed crossing between intersections and crossing against traffic signals at intersections. A study by the pedestrian control and protection committee of the National Safety council indicates that 13 per cent of the pedestrians killed last year were either intoxicated or had been drinking at the time of the accident and in some communities the figures are as high as 40 per cent.

The fatality rate in the age group above 65 years is extremely high. It is 43.2 for each 100,000 population, as compared to 3.4 for those between the ages of 15 and 24 and 9.3 for those between 25 and 64. The severity of accidents to the elderly pedestrian is also shown by the fact that 12.1 per cent of all traffic injuries to people more than 65 years of age resulted fatally.

It is obvious that since pedestrians and motorists must share certain portions of the roadways together, there must be a definite understanding of the rights of each and a respect for the privileges of the other.

While modern improvements such as limited ways which remove fast moving vehicles from conflict with pedestrians and pedestrian overpasses and underpasses which remove pedestrians from the vehicle paths, will

exercise a tremendous force in the reduction of pedestrian accidents, there will always remain a large portion of the roadways that must be used jointly by the two types of street users. It is therefore imperative that just and reasonable rules be formulated to govern the conduct of each user and that these rules and regulations be enforced.

### A 'FULL FLOATING RIDE' IS DODGE'S 1940 OFFERING

Wheelbase Is Longer; Dash Has Safety Lights

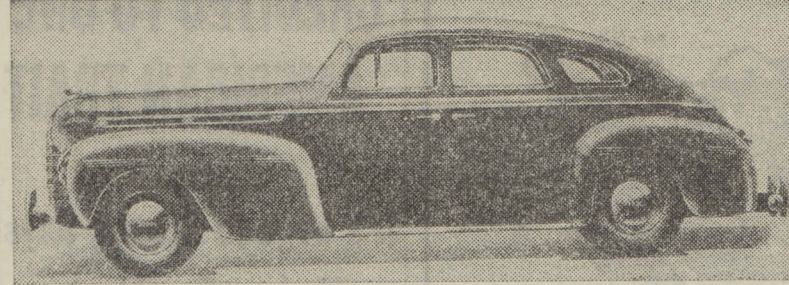
Perhaps the outstanding feature of the redesigned Dodge for 1940 is its new ride, which has been called the "full floating ride," says Frank J. Timmens, general sales manager for the Dodge division of the Chrysler corporation.



He says the basic principle underlying the ride rests in a newly perfected system of weight distribution thru which the engineers have created a scientifically placed "zone of comfort" in which the driver and passengers are seated.

Wheelbase Is Longer.  
The wheelbase of the 1940 Dodge is 119½ inches as compared with 117 for 1939. The chassis frame is stiffer. The individual-action front springing, combined with our double-acting, air-plane type hydraulic shock absorbers, shows further improvements. The

### 1940 Dodge Luxury Liner



This four door Dodge sedan has a 119½ inch wheelbase.

steering mechanism has been improved.

Timmens says that the lengthening of the wheelbase from 117 to 119½ inches does not complicate the parking problem because it has been accomplished without any increase in the overall length of the car.

The motor is of the 6 cylinder type and develops 87 horsepower. Numerous refinements are incorporated in the motor for better performance and longer life. One contribution toward ease in driving is an electric choke which automatically takes care of whatever carburetor choking is required.

Safety Signals on Panel.

Among the features new this year are the sealed beam light for safer night driving and a number of safety signals on the instrument board. These include a red light on the speedometer which lights when the speed goes beyond 50 miles an hour

and warning lights that glow on the instruments indicating engine heat, gasoline supply, generator output and engine oil pressure, notifying the driver that his attention is required.

### CHEVROLET PUTS IMPROVED TRUCK LINE ON MARKET

Chevrolet this week is announcing its 1940 line of trucks in which are incorporated a number of improvements and refinements. The new models cover the light delivery, ½ ton, and heavy duty lines. All are powered by the company's improved six cylinder valve-in-head engine. Major advances include an all-helical transmission in light and medium duty models and hypoid rear axle, with stronger pinion and lower tooth pressures thru the whole line.

### PLAN NEW BRIDGE ON HIGHWAY TO LINCOLN'S HOME

[Chicago Tribune Press Service.]

Decatur, Ill., Nov. 4.—State highway engineers are preparing plans for a steel and concrete bridge over the Sangamon river in Macon county to extend the Lincoln memorial parkway past the Thomas Lincoln homestead to the Mount Auburn secondary highway.

In Illinois, has been purchased by Macon county and donated to the state for an historical shrine. Plans are being formulated to restore the Lincoln cabin and to landscape surrounding land.

The county has completed a 200 foot parkway joining the state park and U. S. highway 36, seven miles west of Decatur. The parkway now stops at the Sangamon river. The proposed bridge will allow it to be extended south, giving access to the park from both directions.



## Don't take yourself for Granted...not yet!

If you believe you've done everything twice...don't give up hope.

Because, today something can make your thrill-worn pulse beat like a triphammer.

Just look for a silent, flying, flashing something, shaped like a silver bullet...that's called the 1940 Nash.

And when you take the wheel, don't ask "What'll she do..." Just tap that throttle and grab hold of your hat.

As a hundred-odd horses go silently tearing out, you'll realize this Nash manifold-sealed engine is something new in power!

The road unrolls itself...hills mysteriously flatten out.

Then a Fourth Speed Forward cuts in...and you get a new surprise. For

in that extra gear is the new Nash "overtake"—a sprinting speed to pass laggard cars, and it's "terrific"!

At your knee is a mysterious dial—just turn it, and November turns to automatically-maintained June! It's new "Weather Eye" magic, exclusively Nash—and no more dusty days or chilly nights for you.

Then head for the roughest road you know—lay two gentle fingers on the wheel, and watch and feel what happens!

The bobbing hood...the jerking wheel...the thumping seat...the dizzy sway...they're gone!

Smooth and straight as an arrow, in flying-feather silence—you rush forward to your goal.

We've coined a name for it... "Arrow"

"Flight" Ride...because it has never been used in a car before—soft coil springs in front, giant shock absorbers and synchronized springs in rear:

And nothing can prepare you for the feel of it.

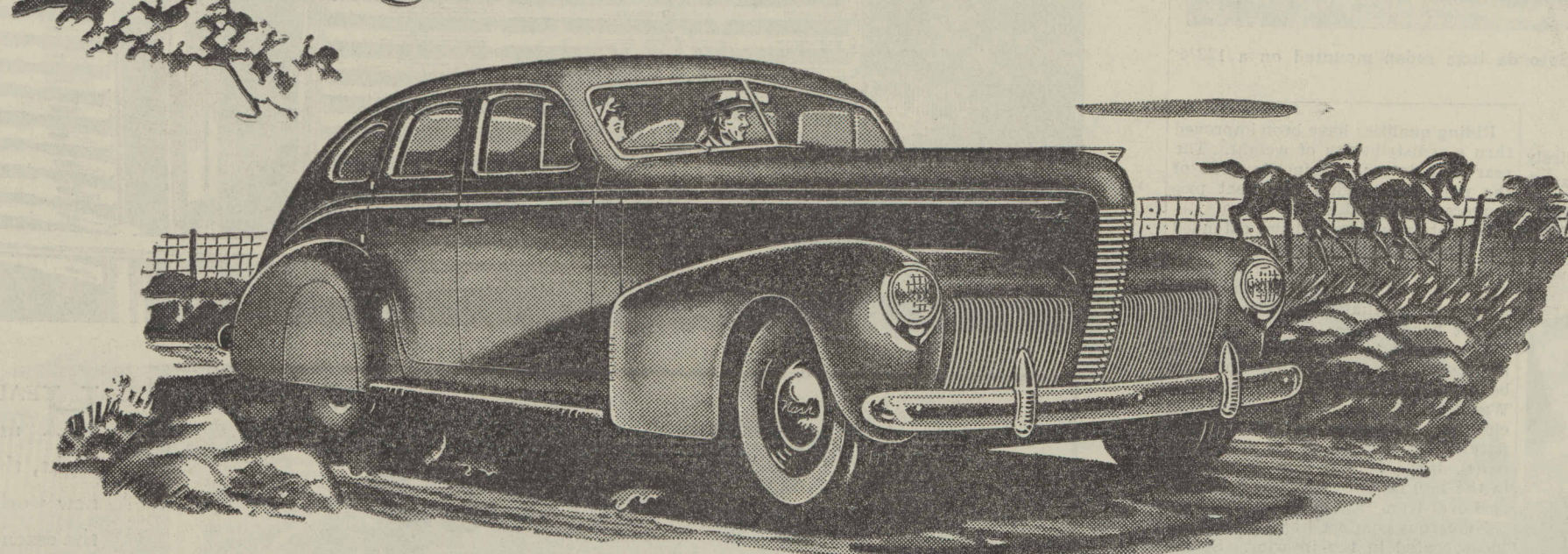
From new Sealed Beam headlights to convertible bed in back for week-ends...the 1940 Nash is made for fun!

It puts a thrill even into saving money; with the engine that won honors in the Gilmore-Yosemite economy run...21.25 miles to the gallon!

Fact is—the only thing commonplace about it is the price—next to the lowest!

So why put up with your present car when you can trade it for a glamorous new Nash? See your Nash dealer now!

## Again...it's that new NASH



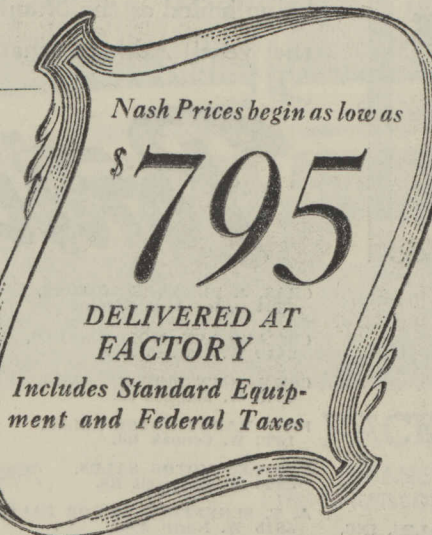
**NEW LOWER PRICES** This new 1940 Deluxe Nash LaFayette Sedan costs \$20 less than last year...only \$875.00, delivered at factory, standard equipment and Federal taxes included. Steering-Post Gearshift, the new Hi-Test Safety Glass, Sealed Beam Headlights, and Canada Cloth Upholstery are standard on all models. The Weather Eye conditioned air system, Fourth Speed Forward, White Sidewall Tires and Rear Wheel-shields are optional extras. 1800 dealers offer nation-wide service.

### Why Don't You Trade Your Car in on a New Nash?

NASH SALES, INC., Distributor

236 East 24th Street

CALUMET 2000



CHICAGO, ILL.	CHICAGO (Continued)	ILLINOIS (Continued)	ILLINOIS—(Continued)	ILLINOIS (Continued)
Auto Mart...4814-26 W. Madison St. Beverly Hills Auto Sales Co. Runde Motors...8624 N. Western Ave. Chase Motor Co...4891 Archer Ave. Fashion Auto Sales Co., Inc. Gran Motor Sales, 5618-26 W. Division St. Thomas J. Hay, Inc. George R. Hedges, 9064 S. Chicago Ave. Isaacson Garage & Motor Sales Co. Don Lee Nash Sales, 3016 Lawrence Ave. Logan Square Motors, Inc. Nash on Broadway, Inc., 5857 Broadway Northcenter Nash, 1804-06 Irving Park Orden Nash Motor Sales Onas Motor Sales, 5114 S. Racine Ave. Rome Motor Sales, 4107 Milwaukee Ave. Rousland Nash Sales, Inc. Roto-Wallman Motors South East Nash, 7248-50 Stony Island Ave. South Racine Nash Sales, 6931 S. Racine Ave.	Southtown Nash-LaFayette Sales, 7630 S. Halsted St. Tourist Motor Sales, 6944 S. Western Ave.  SUBURBAN DEALERS Barrington, Ill.,...Benz's Garage Blue Island, Ill.,...Blue Island Nash Sales Chicago Heights, Ill.,...Stober Nash Sales Cicero, Ill.,...Gierco Nash Sales Des Plaines, Ill.,...Pover Nash Sales Evanston, Ill.,...Nash Evanston Co. Harvey, Ill.,...Harvey Nash Sales La Grange, Ill.,...West Suburban Nash Matteson, Ill.,...Arthur Mahler Oak Park, Ill.,...Barrow Brothers, Inc. Riverside, Ill.,...Wilson Motor Sales  ILINOIS ALGONQUIN...Algonquin Nash Sales AURORA...Dewey & Co. BELVIDERE...Belvidere Nash Sales BLOOMINGTON...Bloomington Motor Co. BUCKLEY...Janssen Brothers CANTON...Canton Nash Sales & Service CHAMPAIGN...Perry Motor Sales CHATTSWORTH...George A. Miller CLINTON...McCummen Garage DANVILLE...R. J. Harper Nash Sales DE KALB...Heddes Nash Sales	DECATUR...Reo Nash Sales Co. DIXON...Henningsen Garage EARLVILLE...Motor Inn Garage ELGIN...Fox Garage FAIRBURY...Loman Brothers Nash Sales FORRESTON...Walter Vietmeier FREEPORT...Huntmacher & Zurbiggen GALESBURG...Knox Auto Sales, Inc. GALVA...Nash Garage GENOA...Geneva Garage GENOA...Zimery Schutt Garage GILMAN...Kuiper's Tractor Co. HARVARD...Harvard Motors HAVANA...Havana Nash Sales HIGHLAND PK., A. G. McPherson, Inc. JOLIET...Butt Nash Co. KANKAKEE...Close Motor Sales LA SALLE...Albert J. Brier LIBERTYVILLE...Ree Motor Sales LINCOLN...Schroeder Nash Sales MAGOMB...Ford Motor Sales MARSHALL...Perry Standfield MATTOON...Scott's Garage MEHENRY...Rosman Motor Sales MENDOTA...R. C. Service Co. MOMENCE...Heddes Nash Sales	MORRIS...Miller Nash Sales MORTON...Nick Carstenen MORTON...Home Oil Co. NAPERVILLE...Naperville Nash Sales OTTAWA...Farrell Motor Sales OREGON...Oregon Implement Co. PANA...Nash Sales PARIS...Earl's Garage PEKIN...Walt Westrope PEORIA...TOD's Motor Sales PEORIA...Combs Motor Sales PLANO...Clifford Motor Sales PONTIAC...E. M. De Bolt PRINCETON...A. E. Anderson Auto Co. QUINCY...Quincy's Sales and Service REDDICK...Ekliden Co. ROCKFORD...Rohlf's Garage ROCKFORD...Woodworth Brothers Garage ROCHELLE...Bortz Nash Sales ROCKFORD...Nash Illinois Co. ROCK ISLAND...Edwards Auto Sales ROSSVILLE...James Cornell and Sons SANDWICH SAVANNA...Sandwich Motor & Equipment Co. SHELBYVILLE...O. F. Elliott SYCAMORE...Art's Garage STERLING...Sterling Garage TAYLORVILLE...Richmond Nash Sales TAMMICO...Anderson's Implement Co.	URBANA...Triangle Motors VILLA PARK...Armbrust Motor Sales WAUKEGA...Kice Auto & Battery Serv. WAUKEGAN...G. L. Miller Motor Sales WHEATON...Wheaton Nash Co. ZION...Zion Industries, Inc.  INDIANA CROWN POINT...Nichols Motor Sales FOWLER...Powell Nash Motor Co. GARY...Art Travers, Inc. HAMMOND...O'Neil Auto Sales, Inc. INDIANA HARBOR...Nash-LaFayette Sales and Service KENTLAND...Swihart's Garage LA PORTE...Jacob Rose LOWELL...Ralph Hudson Nash Sales MICHIGAN CITY...Joe Dry, Inc. PLYMOUTH...Berkey's Auto Sales RENSSELAER...Hermanman Nash Sales WHITING...Nash Whiting Sales  WISCONSIN BURLINGTON...R. W. McDonald BELOIT...Belick Motor Co. ELKHORN...Meicher Nash Sales GENOA CITY...B. F. Schuren JANESVILLE...Robert F. Burga MONROE...Frank Maurer Garage

OR SEE THE NASH DEALER IN YOUR COMMUNITY

