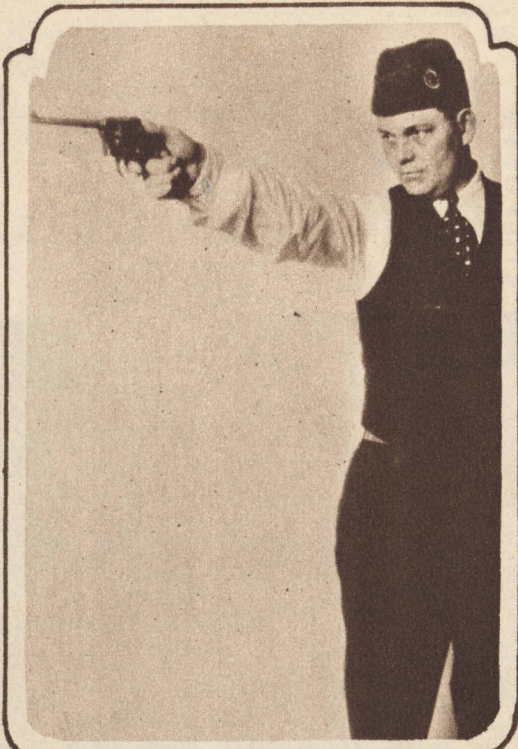




THE NEW COMMANDER of the American Legion, Maj. O. L. Bodenhamer, was feted at Little Rock on his way home from the Legion convention to Eldorado, Ark. With him as he watched the parade in his honor were Charles H. Brough, wartime governor of Arkansas, at the left, and Harvey Parnell, the present governor, at the right.
(Photograph from Pacific and Atlantic.)

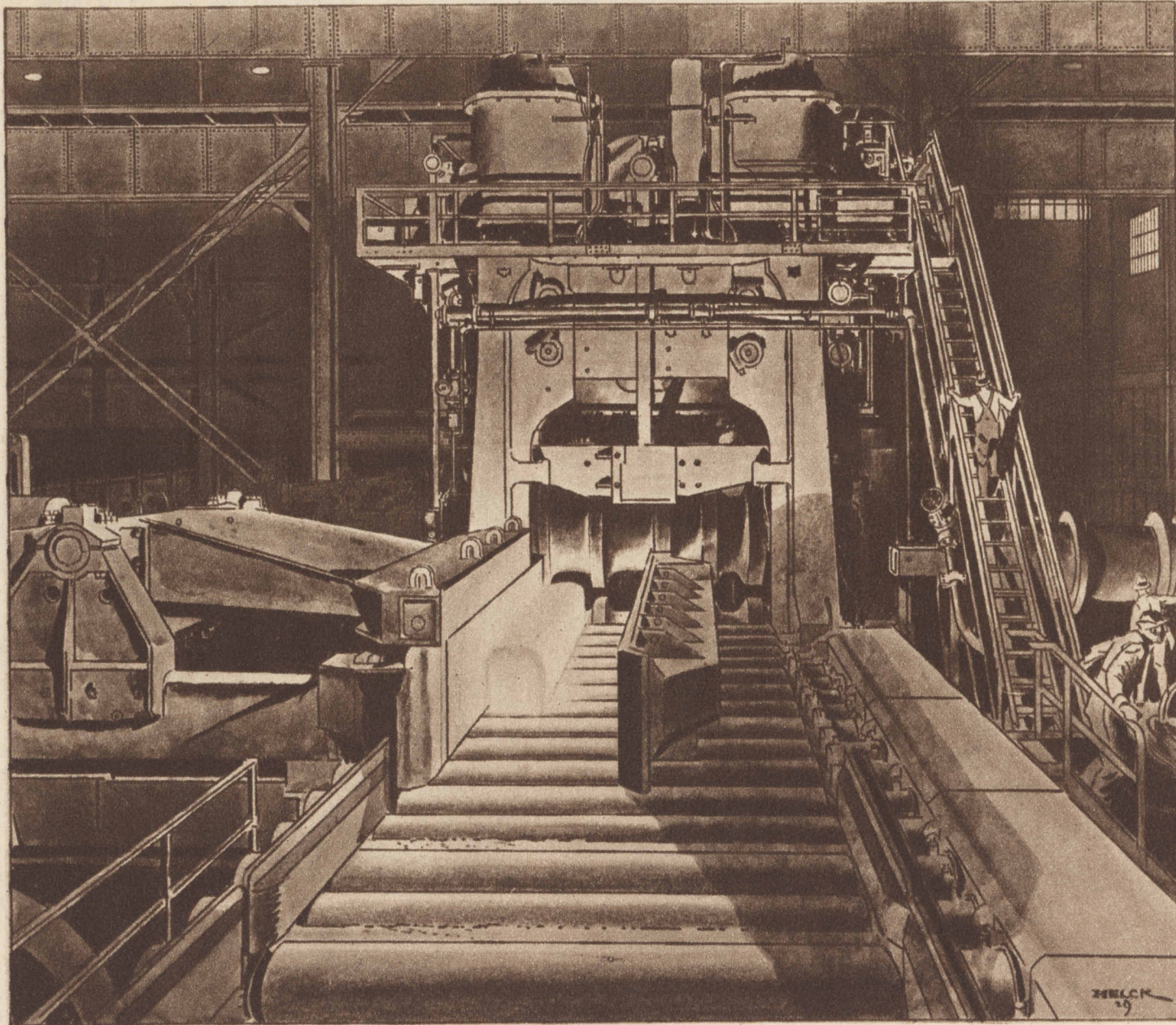


BEST SHOT—Ralph S. Marshall of Lima, O., won the American Legion's national revolver championship at the convention in Louisville.
(Photograph from Associated Press.)

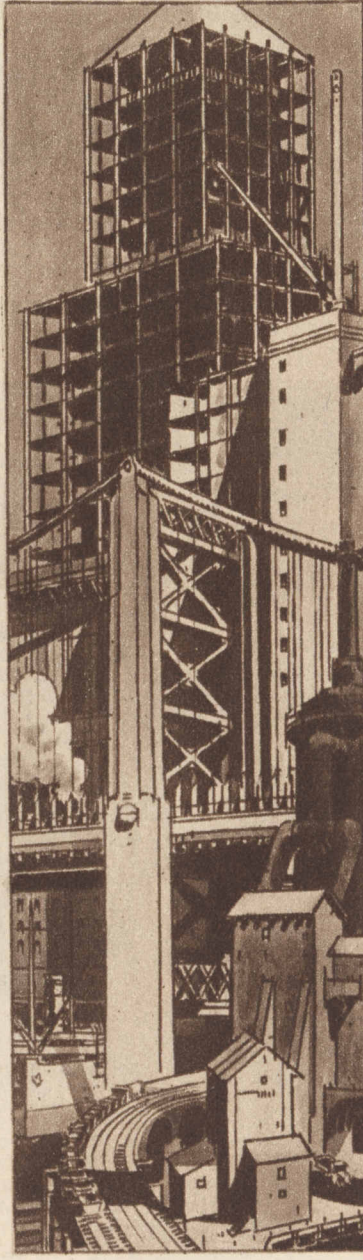


THE NEWEST BARRYMORE—Miss Ethel Barrymore Colt, 17, visited her mother, Ethel Barrymore, in her dressing room in Chicago and got a few pointers on stage makeup. The daughter plans to carry on the family tradition, but her mother wants her to wait a while.
(Photograph from Wide World.)

WHAT WESTINGHOUSE IS DOING TO MODERNIZE INDUSTRY



DRAWN FOR WESTINGHOUSE BY C. PETER HELCK



WESTINGHOUSE HAS PIONEERED IN THE ELECTRIFICATION OF STEEL MILLS

Electricity—maker of iron and steel

Trace the ancestry of a watch spring, a motor car, a modern skyscraper's towering frame. These and a thousand other everyday conveniences are yours because men of the iron and steel industry tend their roaring furnaces. They transform mountains of raw ore to glowing iron. They roll ingots of raw steel into rails, rods, sheets, and bars that builders, manufacturers, and railroads demand in growing volume.

Fifty million tons of steel a year must be produced to meet America's needs for bridges and buildings, machinery, ships, and railroad trains. Electric motors to the total of six million horsepower turn the wheels that help the steel industry supply this vast demand.

In modern steel production, electricity drives machinery that unloads bulky ore boats in a few hours' time. The blast and open hearth furnaces that reduce raw ore to steel are charged

by electric power. Electric hands maneuver great ladles of molten steel with the dexterity of a tireless giant.

Where ten-ton ingots are pressed down to bars, rods, and sheets of wafer thinness, it is electric power that drives the crushing rolls. Where twenty thousand horsepower must be concentrated in a single machine, electricity makes this massed strength constantly responsive to the finger-tip control of a single man.

Westinghouse, in co-operation with engineers of the steel industry, has played a prominent part in its electrification. Westinghouse was first to apply electric power to a main roll drive. Many of the speed-regulating devices in use today are Westinghouse developments. Westinghouse provides the giant motors as well as the countless auxiliary motors, controls and various safety devices that make today's efficient production of iron and steel possible.



The Sign of a Westinghouse Dealer

Westinghouse

Few men realize how much the pajama drawstring interferes with sound, true sleep. Hard, unyielding, and tightly drawn (or the trousers fall down) it hinders circulation and prevents muscles from completely relaxing. It's just like so much rope around the waist!



The Waistband that revolutionized nightwear!

—the reason why Faultless Nobelts are the most popular pajamas of today is that



They stay up without noticeable waistline pressure

ONLY when the drawstring was banished—forever!—did men come to realize how really comfortable pajamas could be. And now they buy them by the thousands . . . these Faultless Nobelts pajamas that have made possible real, sound sleeping and lounging comfort.

The patented Nobel waistband that takes the place of the harassing drawstring is a broad, flat, resilient band that fastens with one lone button. It is soft, pleasant, and so gently resilient that though it holds the trousers up firmly it does so without any noticeable pressure round the waist and expands and contracts to the slightest movement of muscles. It breathes with you! It is ideal, for it contains no ordinary garter elastic to cut into the skin and bind—by the patented Faultless process its resiliency is woven into the very fabric of which it is made.

Faultless Nobelts pajamas offer you more than comfort, too—as important as that is. They are stylish, well cut, beautifully tailored. They can be had in many different fabrics and a hundred schemes of color and design. They are very reasonably priced (although Faultless makes high-priced pajamas of silk and saten in exclusive designs that are quite in good taste for week-end informal evening wear and for lounging at any time).

Find out how great it is to awaken refreshed in the morning, with your muscles and nerves rebuilt and relaxed! Treat yourself to Faultless Nobelts pajamas at most any shop or department store. The Faultless Manufacturing Company, Baltimore, Maryland. Chicago Sales Office, Republic Bldg., 209 South State Street. New York City Sales Office, 452 Fifth Avenue (at 40th Street).

Faultless Nobelts Pajamas

REG. U. S. PAT. OFF.

PAT. RE. NO. 16641

"The nightwear of a nation" since 1881

The Nobel waistband is guaranteed to stay resilient. It can be laundered without fear. A tag is attached to every pair of Faultless pajamas insuring replacement of the entire garment if the waistband loses its resilience.

FAULTLESS
SINCE 1881
Nobelts