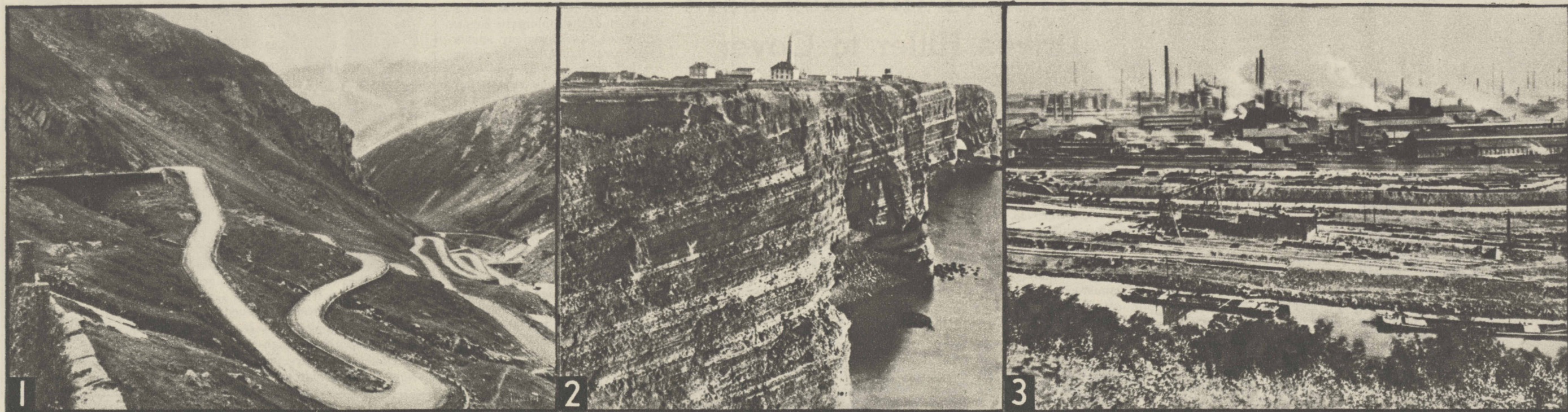
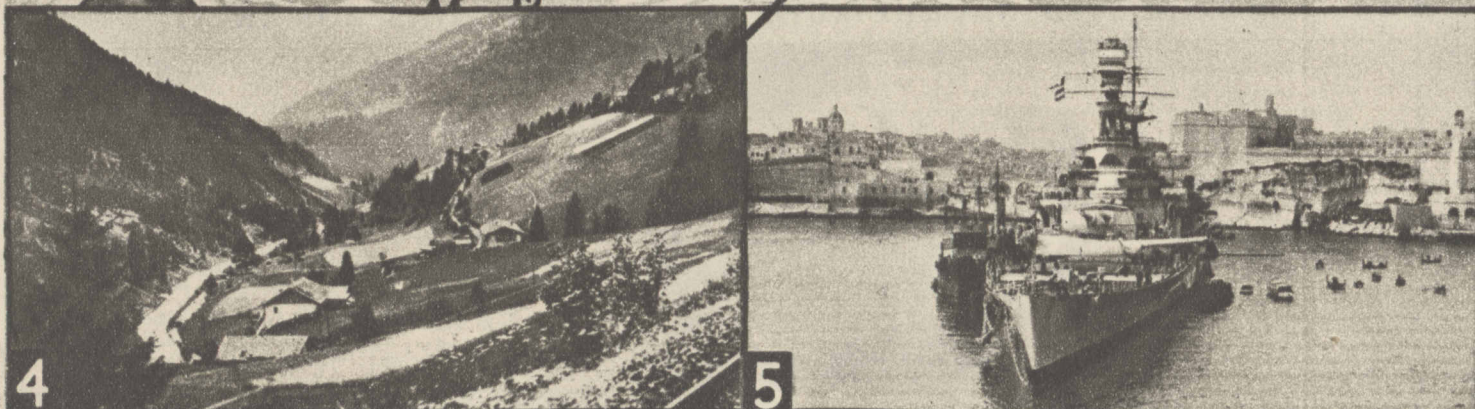


The Physical Features of Europe



Reference to this relief map of Europe will acquaint the reader with the types of terrain over which armies are being forced to operate. Mountains, rivers, and other natural barriers are designated on the map.

WESTERN FRONT
BATTLE LINE
OF 21 YEARS
AGO TODAY



Rivers and mountains named on map in italics. Note—Dotted line shows Poland's boundaries before present war.

KEY TO PHOTOS

1—St. Gothard pass. 2—Helgoland, German stronghold. 3—Saarbruecken's industrial area.

4—Brenner pass. 5—Malta, British Mediterranean base.