



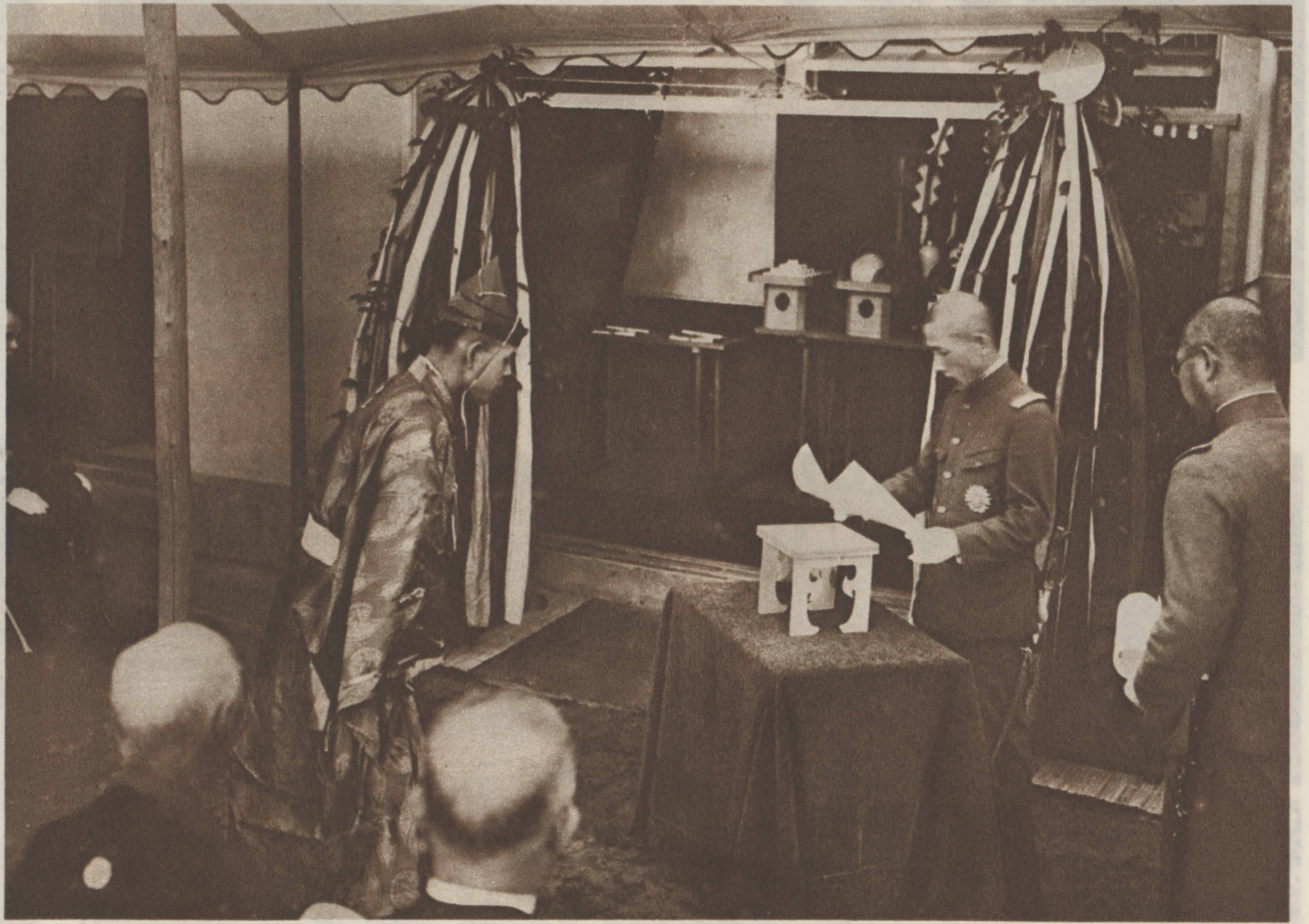
THE MOLLISONS' PLANE OVER THE ATLANTIC.

(Acme photo.)



AS CHIC IN '33 AS IN '80—Shirley Gray in a chapeau of black maline.

(Acme photo.)



SWORDSMITHS IN A SHRINE—Araki, Japanese war minister, calling off names to be engraved on officers' sabers by a priestly craftsman.

(Acme photo.)