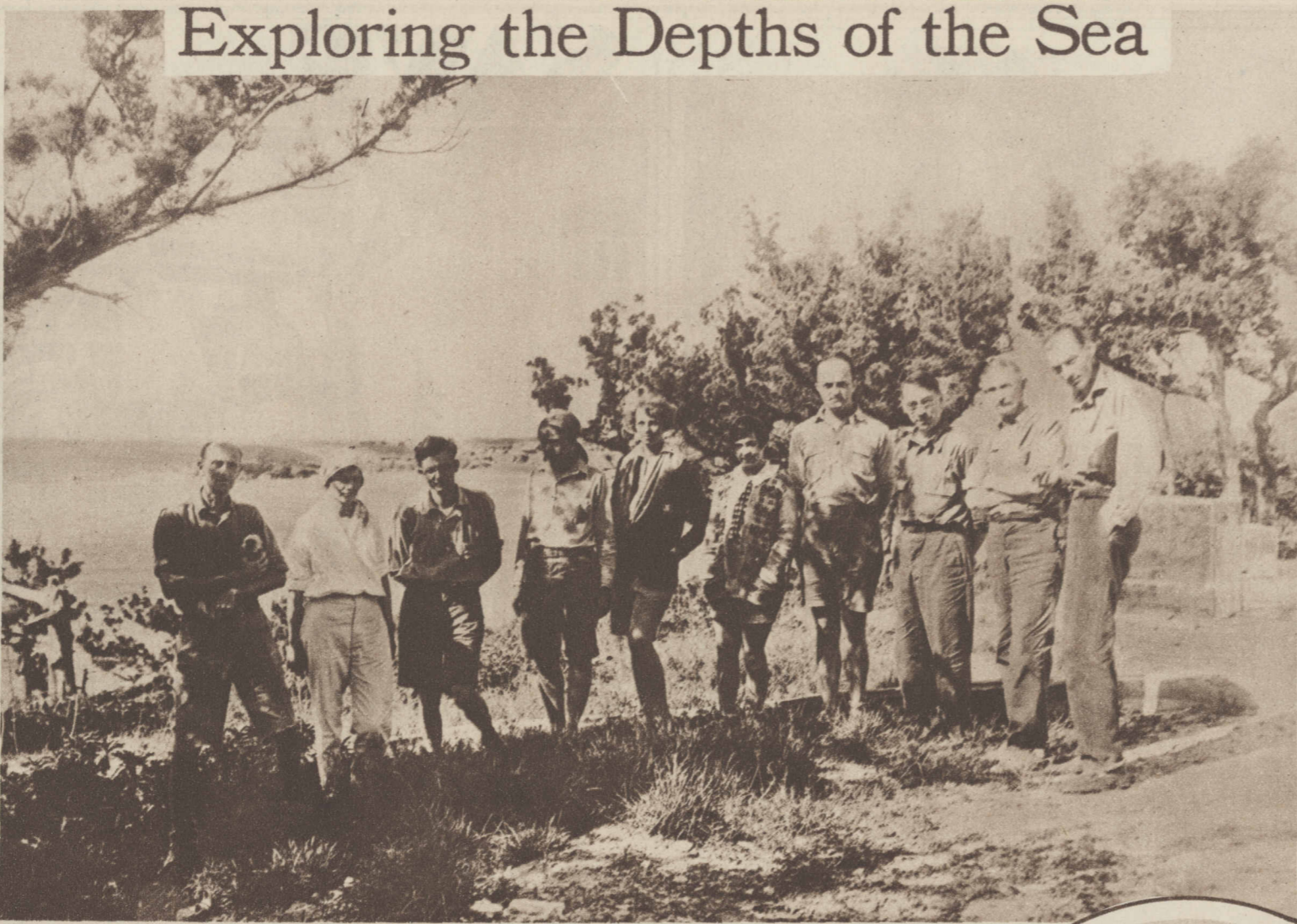


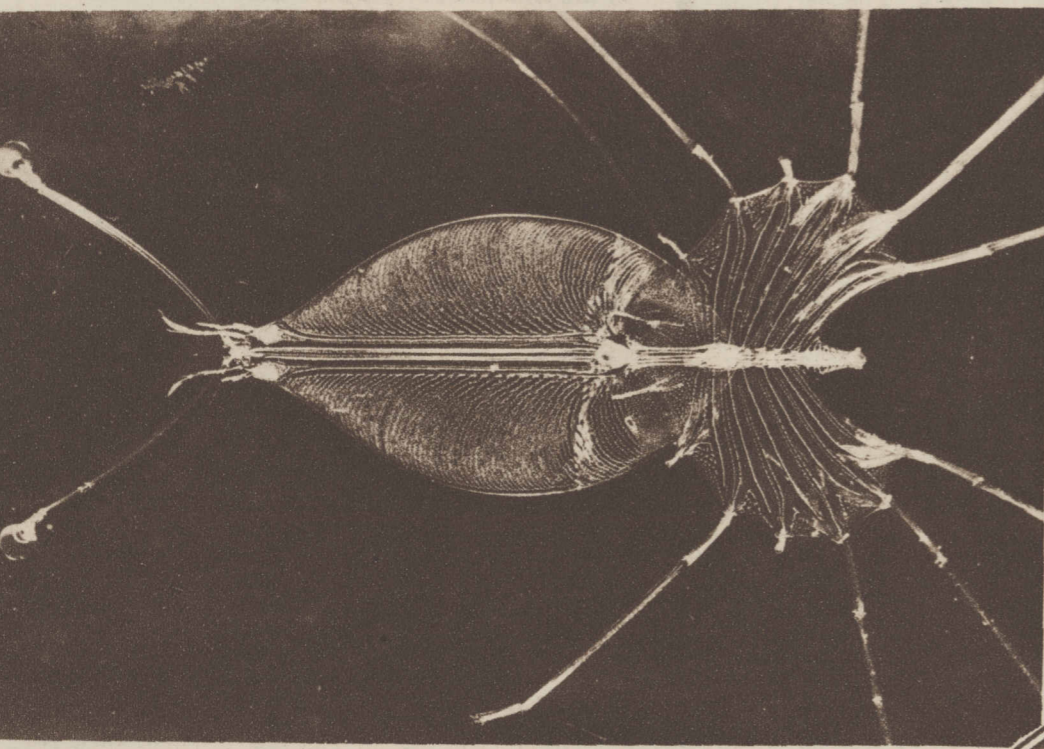
## Exploring the Depths of the Sea



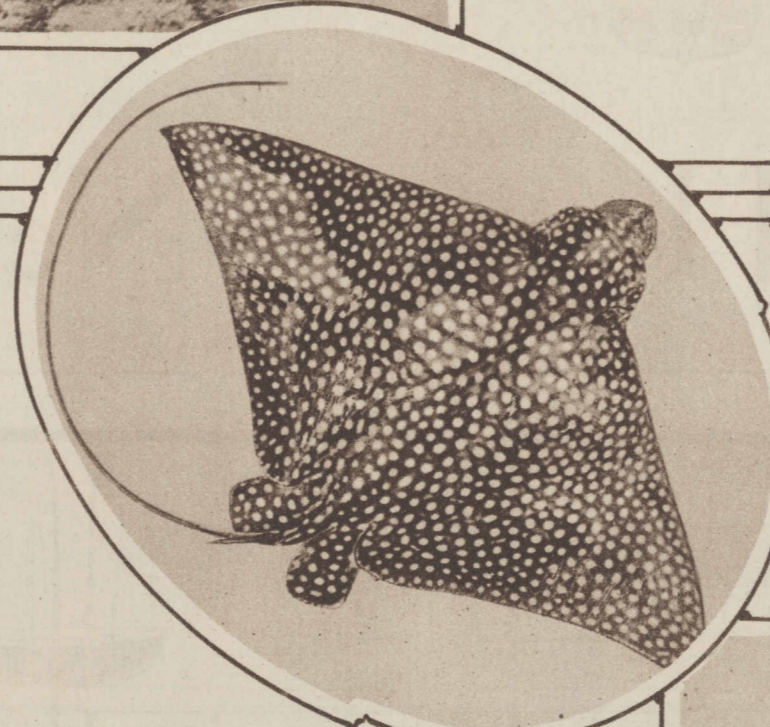
MANY WEIRD CREATURES of the deep seas have been discovered and observed by this group of scientists, headed by the famous explorer-writer, William Beebe, now on an oceanographic expedition on Nonsuch island off Hamilton, Bermuda. Left to right are Dr. and Mrs. Beebe, Mr. and Mrs. John Tee Van, Gloria Hollister, Dr. and Mrs. Charles Fish, Harry Hoffman, Charles Beebe and Sven von Hallberg.



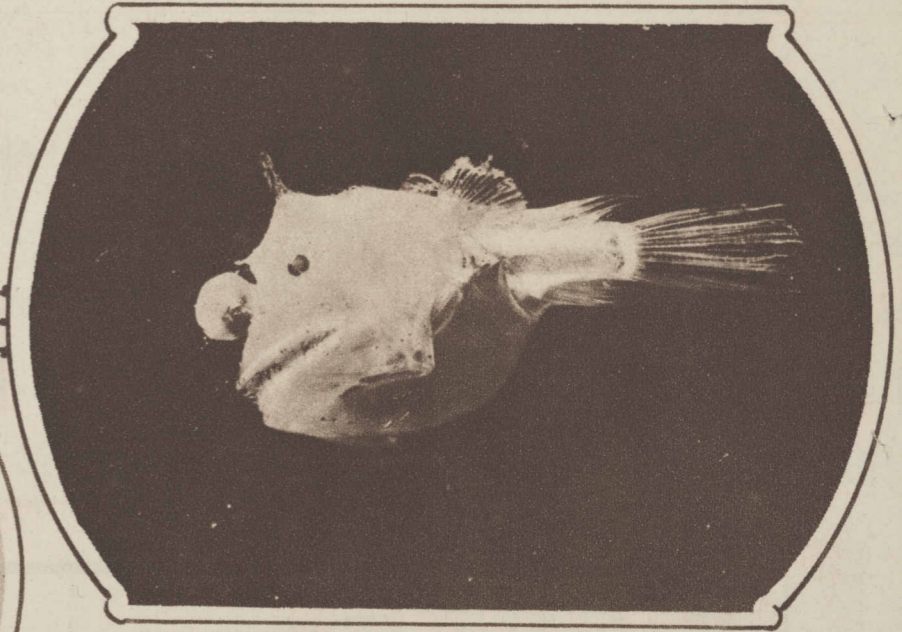
A MARINE PARADISE yields myriad curious specimens which are subjected to the scrutiny of the microscope in the workshop of the expedition. Dr. Beebe is seen second from the right.



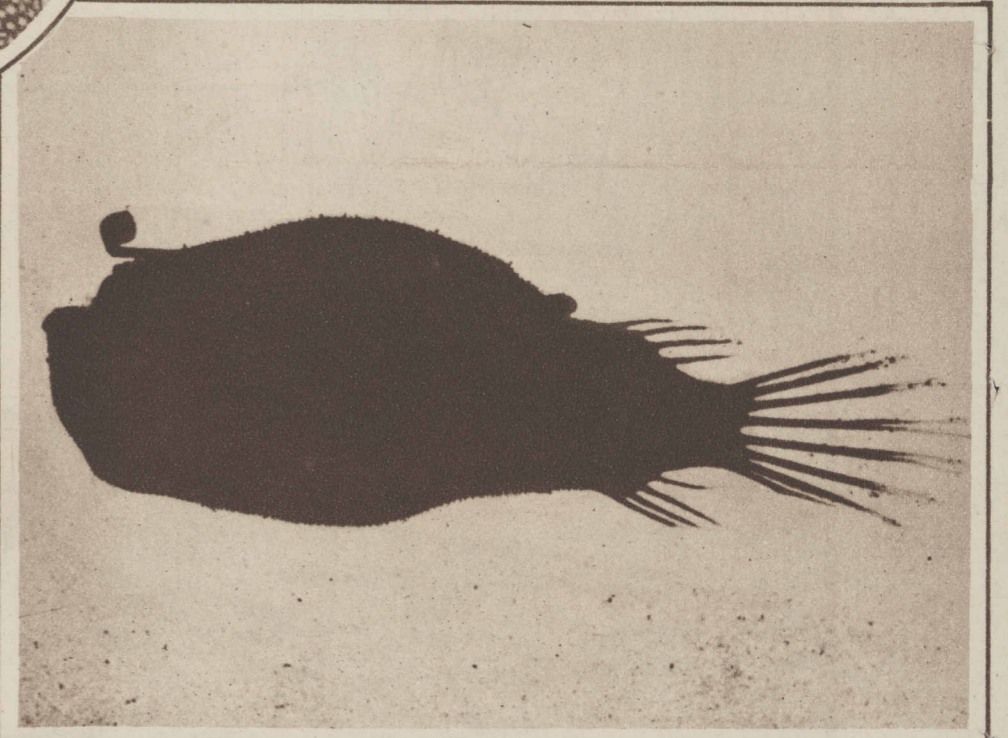
THIS ISN'T A SPIDER, or a modernistic etching. It's only what the camera sees of the famous transparent Bermuda lobster. This clawless crustacean is esteemed a great delicacy.



HERE'S THE SPOTTED EAGLE RAY, with a dress of "printed foulard" and a poisonous sting in its tail, ready to go a-foraging on the sea-bottom for some unsuspecting shellfish.



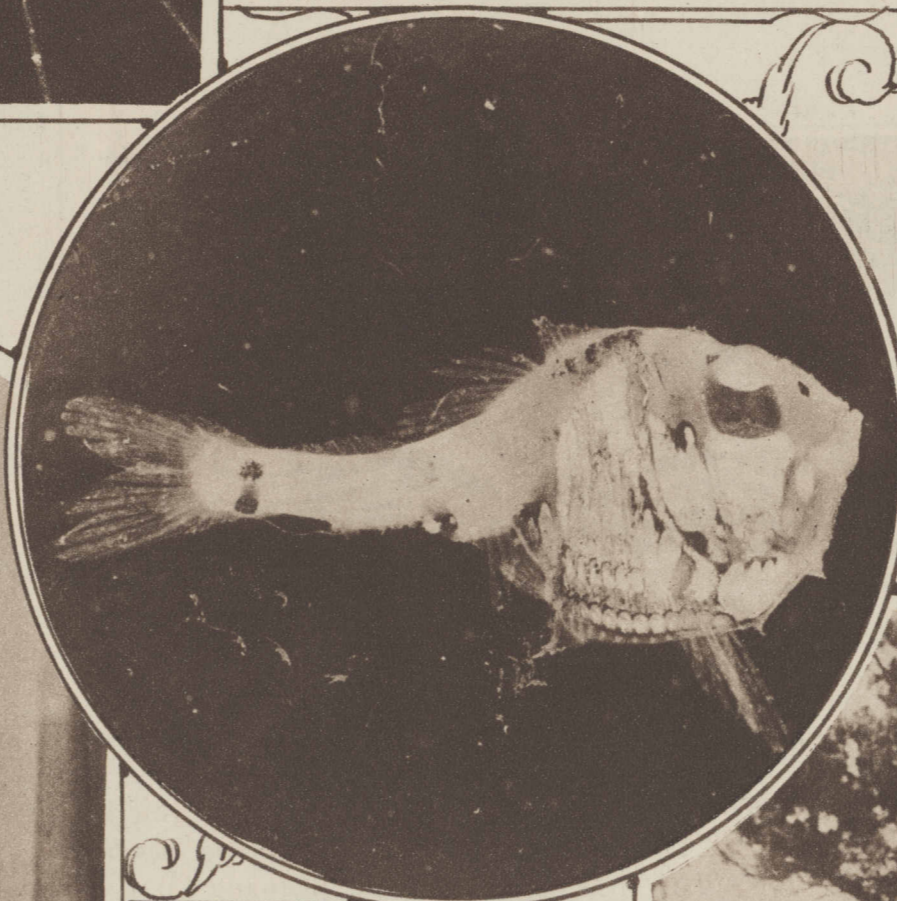
A MILE DOWN IN THE SEA the marine explorers snared this fantastic fish—an illuminated, white, soft, bizarre specimen that looks as if nature may have made a mistake.



A DEEP SEA TORCH-BEARER—This jet-black whale-let with a brilliantly luminescent path-finding "lantern" on its forehead was taken at a depth of 800 fathoms.



DR. AND MRS. BEEBE see what they can see. Mrs. Beebe got along very well by shading her eyes, but her husband preferred the binoculars.



EYES UPTURNED and a battery of lights pointing downward, the silver hatchet fish is one of the queerest specimens examined.



A BOAT FROM THE MAINLAND, the Gladis Fen, is due, and all hands are on the lookout for it to come into view.

(All photographs copyright by William Beebe, from Wide World.)