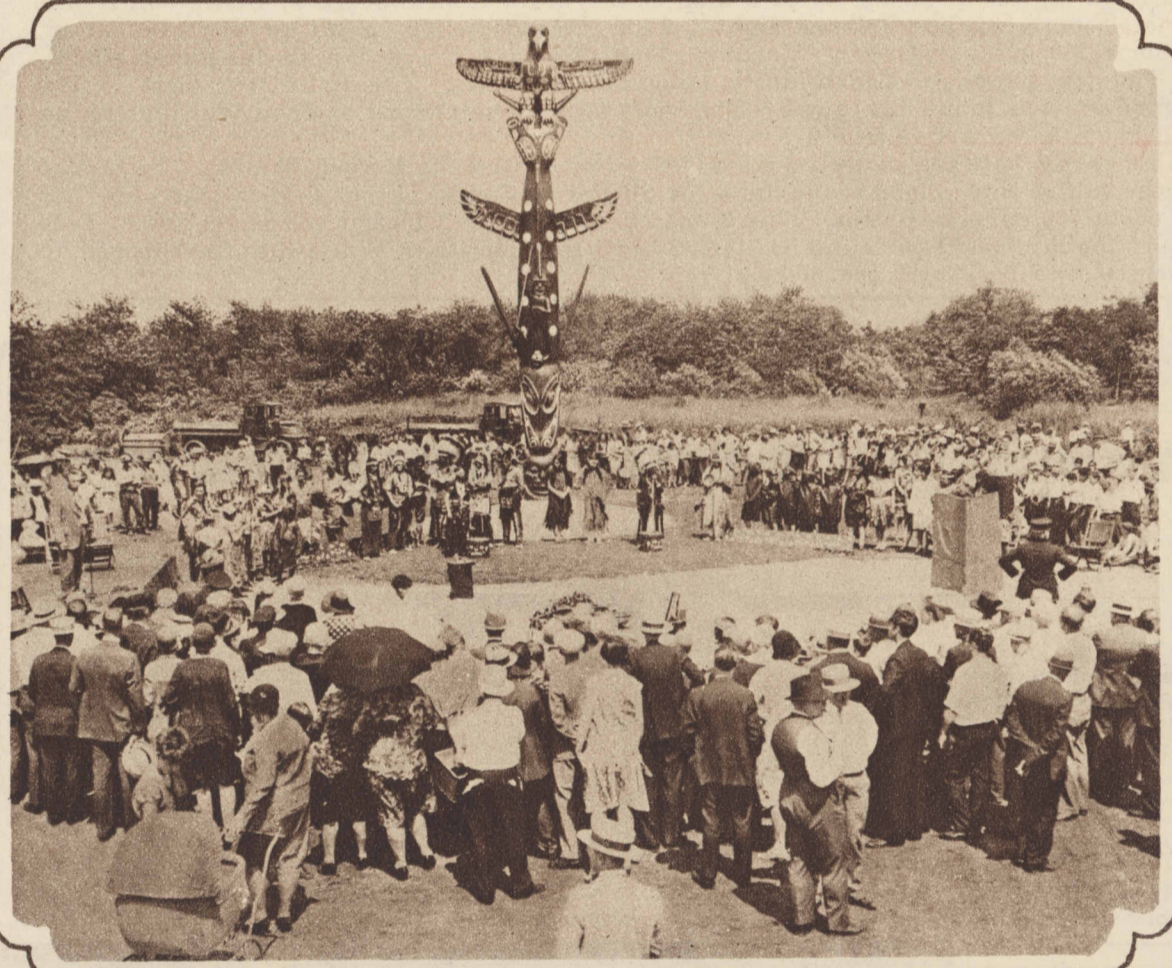


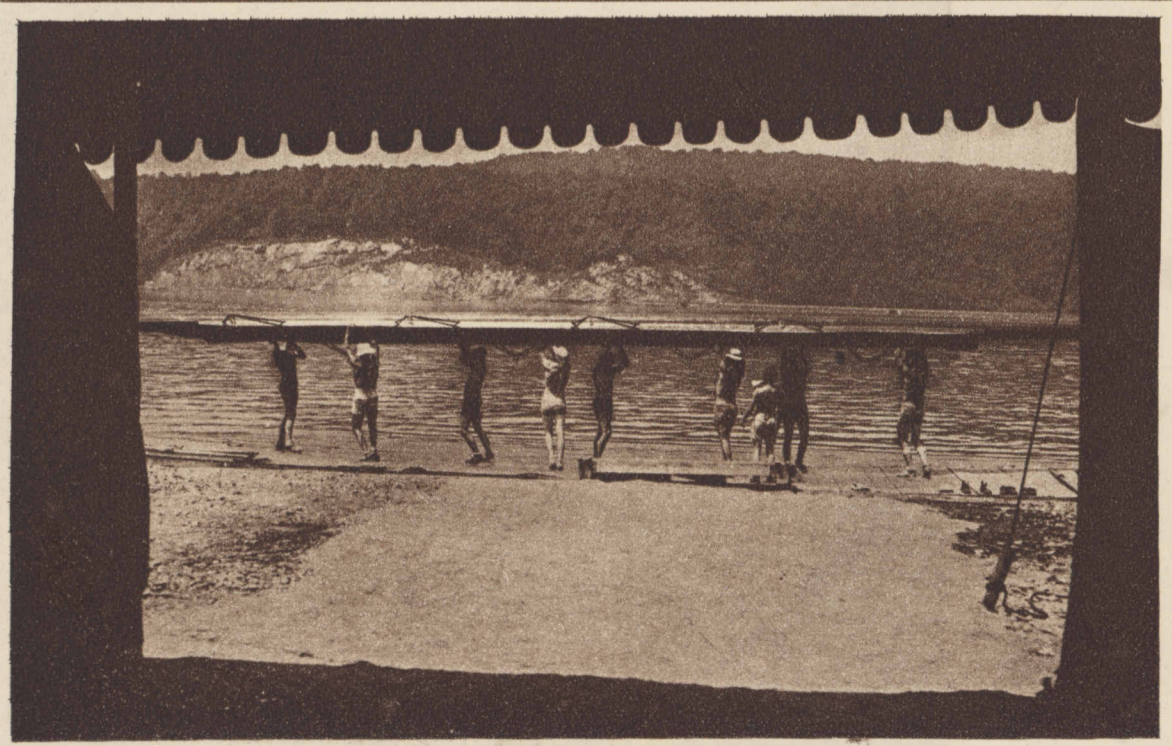
LINKING SKY LANE AND LOOP, officials of the South Park board last Monday dedicated the ramp which enables amphibians to take aboard and discharge passengers at Eighth street in Grant park. Five-minute shuttle service between the municipal airport and Chicago's front yard is thus made an actuality.

(Tribune photograph.)



THIS TOTEM POLE, forty feet high and five feet in diameter, was dedicated recently in Lincoln park. Carved with hieroglyphics and weird pictures, this cypress log records the history of the ancient tribe of Haida Indians of the British Columbia northwest.

(Tribune photograph.)



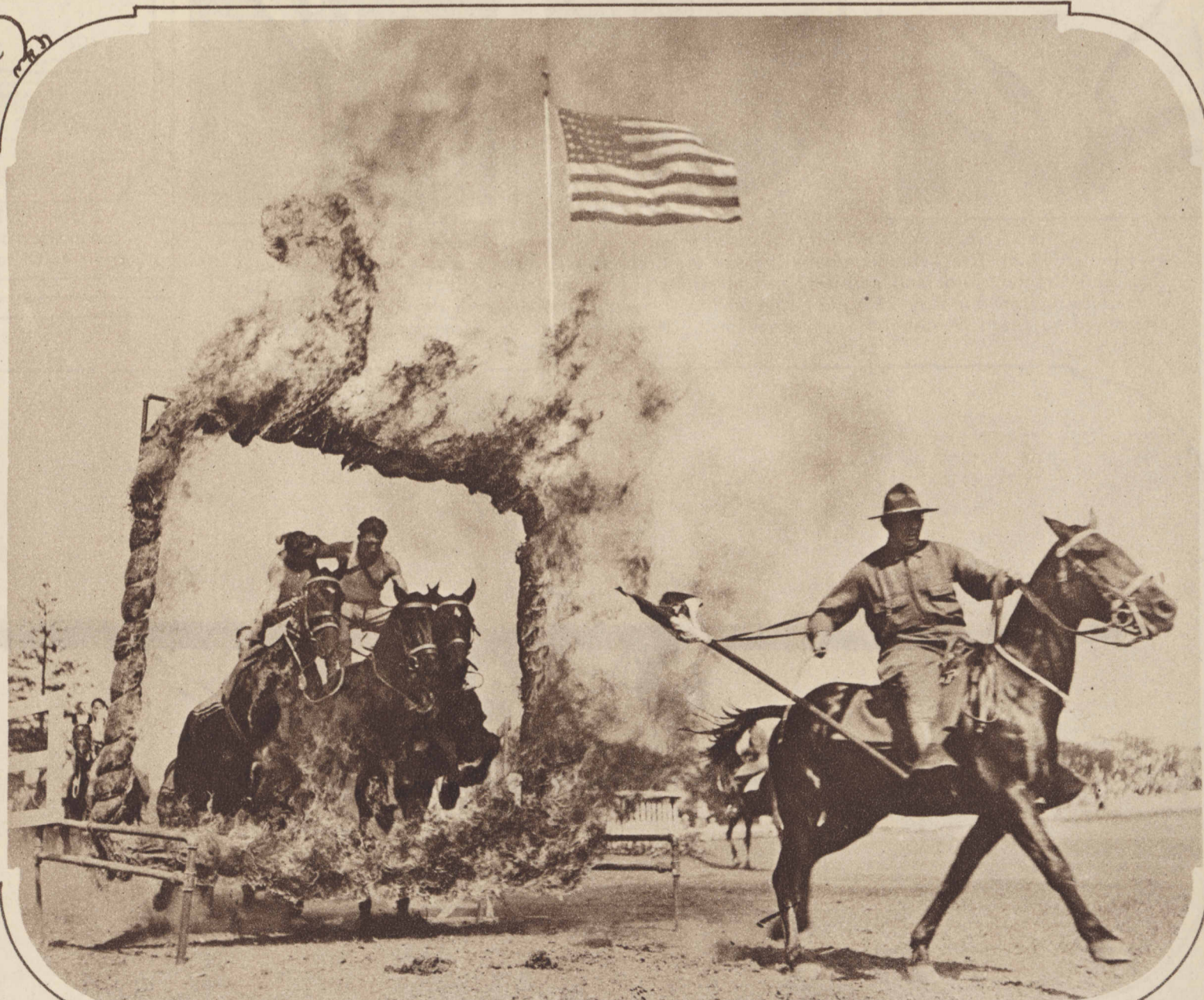
SUNK in the annual intercollegiate regatta at Poughkeepsie last Monday, as 125,000 spectators looked on, the Massachusetts Institute of Technology shell was one of four unable to finish. The four boats filled until they were awash in the choppy Hudson as Columbia skimmed away to a two-and-a-half-length victory over Washington.

(Photograph from Associated Press.)



THE CHICAGO ROUTE TO EUROPE avoids those terrors, the cloud-covered mountains that form aviation's deadliest hazard. This reproduction of the great relief map of North America which hangs in the lobby of Tribune Tower shows that the route of the 'Untin' Bowler stretches over almost entirely flat country until Greenland is reached. A ship flying by the conventional route has to pass through two thousand miles of fogs over the Grand Banks of Newfoundland and adjacent regions, and then to reach the middle west it has to traverse the high mountains of the east. These mountains reach dangerously close to the cloud layers, and between mountain top and clouds there is almost always dangerous fog. The Tribune route completely avoids the mountains, as the map and sketch show, and at all points keeps well under the average American cloud level. At Cape Chidley, also, the 'Untin' Bowler will go around the peak instead of over it, thus avoiding again the danger of the fog layer between mountain top and clouds.

(Tribune photograph and sketch.)



TOAST FOR THE CAVALRY—Horsemen of the 14th regiment from Fort Sheridan presented this thriller last Sunday at the Polo Farm horse show held at the farm of Col. W. U. Sutherland near Wheaton. The show is held annually for the benefit of Wheaton post of the American Legion.

(Tribune photograph.)