

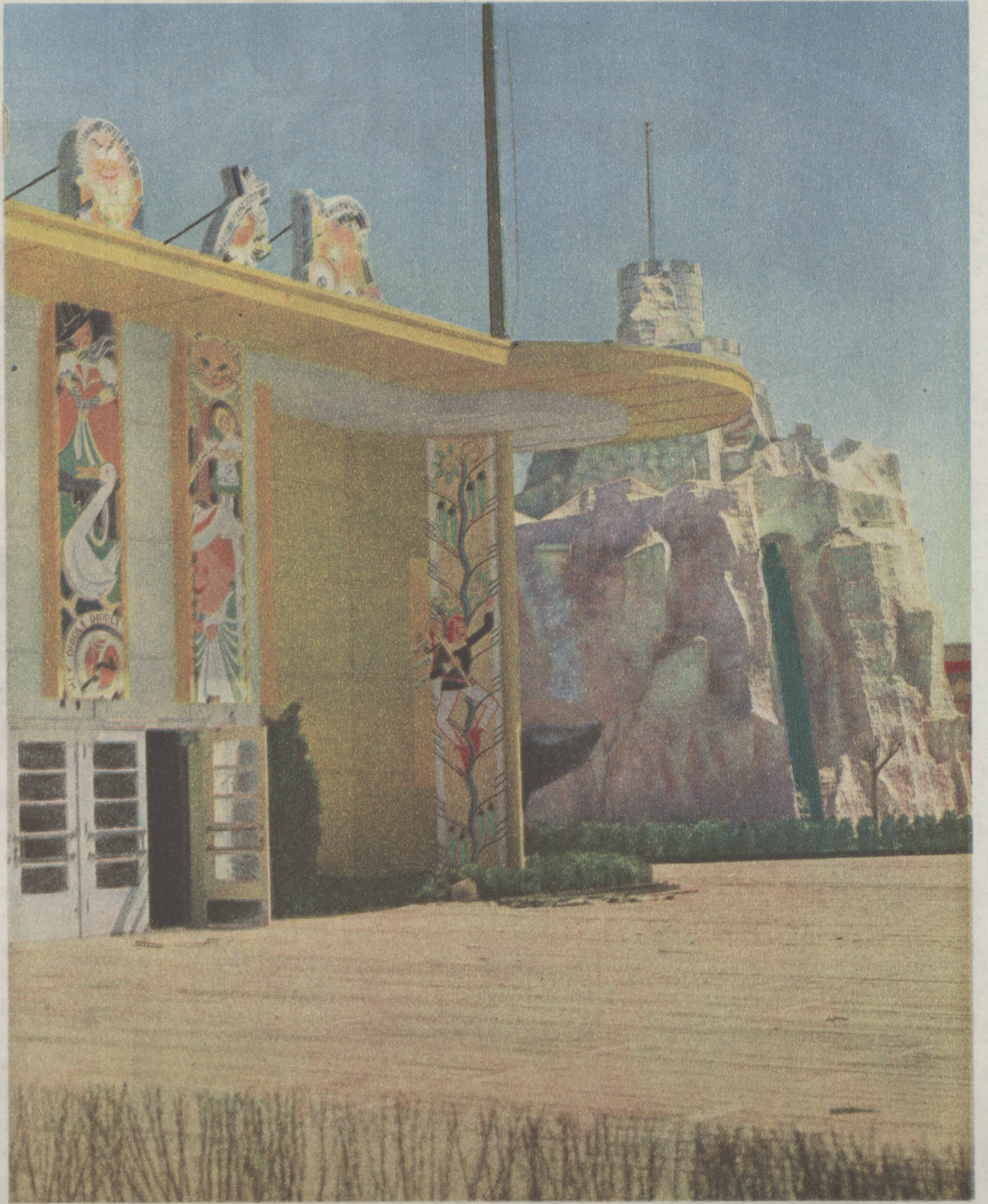
THE ELECTRICAL GROUP AT A CENTURY OF PROGRESS EXPOSITION, AS SEEN FROM THE COURT OF HONOR OF THE HALL OF SCIENCE.

(Tribune photos.)



INSIDE THE GOLDEN TEMPLE OF JEHOL AT THE EXPOSITION. THIS REPLICA OF THE FAMOUS BUDDHIST SHRINE WAS BUILT IN CHINA.

A Full Page Portrait of the Queen of the World's Fair Inaugural Will Be Presented on This Page Next Sunday.



A CORNER OF THE CHILDREN'S THEATER AND THE MAGIC MOUNTAIN, PART OF THE ENCHANTED ISLAND AT THE WORLD'S FAIR.