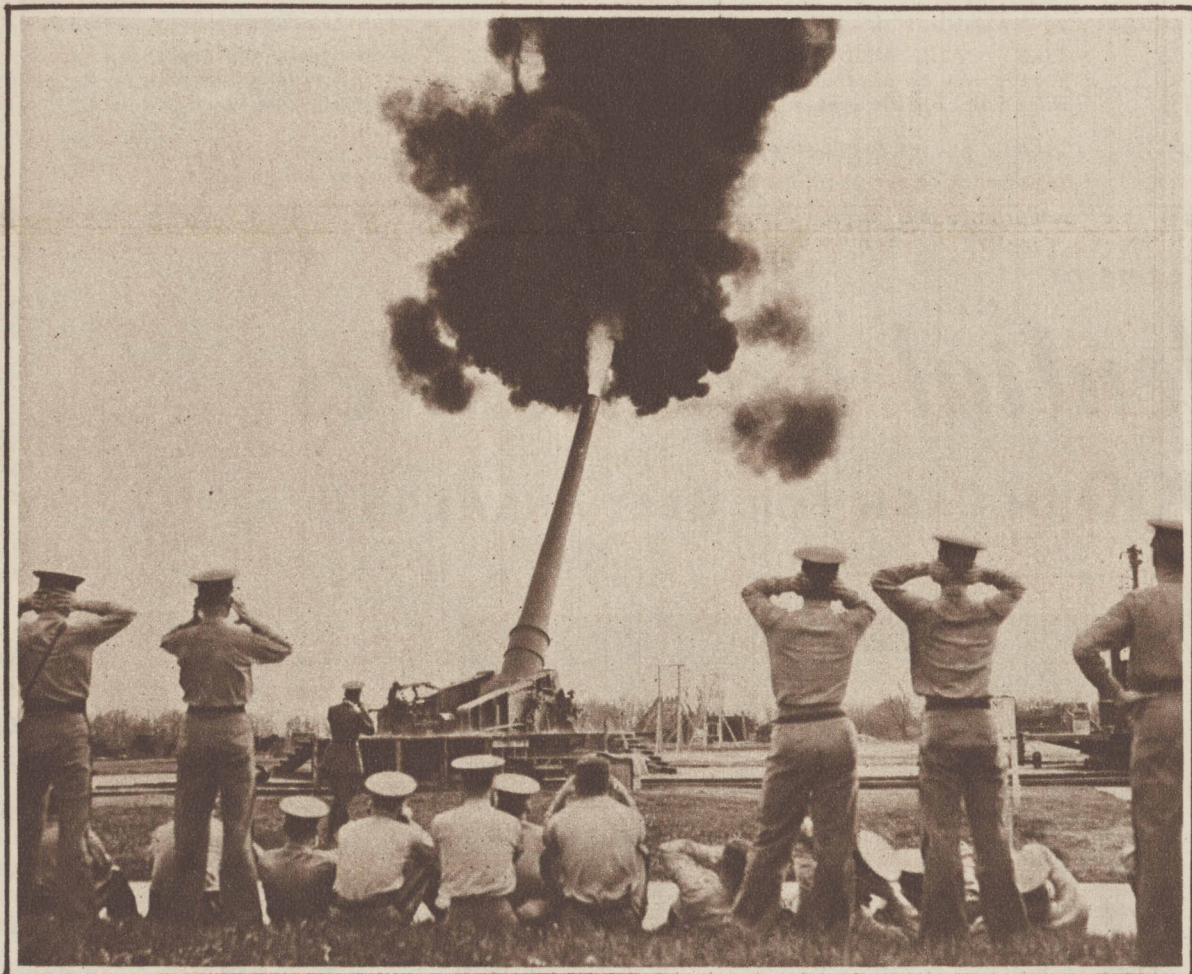


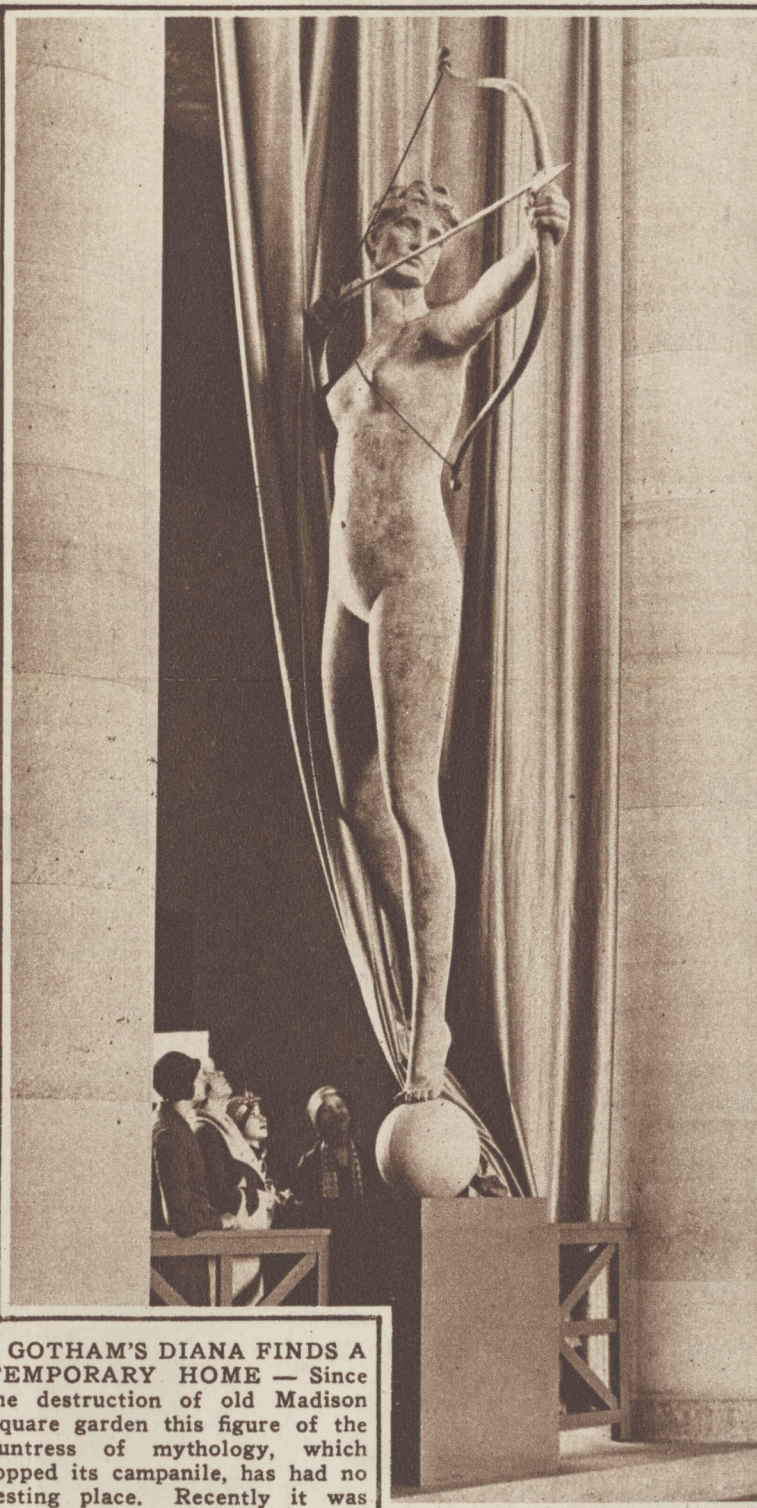
**SILHOUETTE**—Miss Joan Marsh of Hollywood is the subject of this charming camera study.



**WAR-TIME FORTRESS SYSTEM DEMOLISHED**—Erected as a defense during the world war, the fortress system girding Antwerp, Belgium, is being dismantled by the authorities. Above, part of Fort St. Anne is seen being blown up. (Acme photo.)



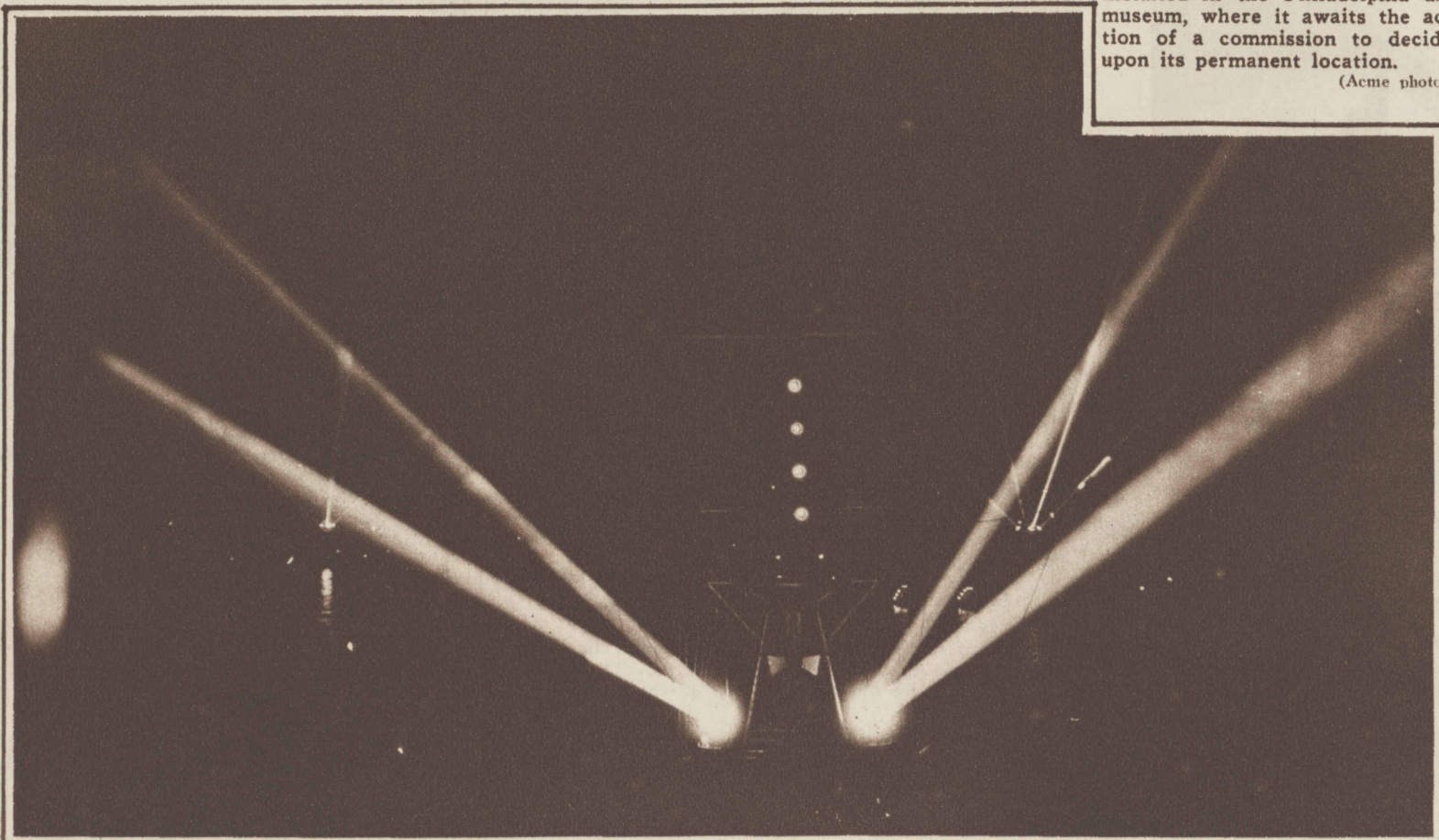
**A WEST POINT DETACHMENT** witnesses the firing of one of the army's sixteen inch guns at the Aberdeen, Md., proving grounds. (International photo.)



**GOHAM'S DIANA FINDS A TEMPORARY HOME**—Since the destruction of old Madison Square garden this figure of the huntress of mythology, which topped its campanile, has had no resting place. Recently it was installed in the Philadelphia art museum, where it awaits the action of a commission to decide upon its permanent location. (Acme photo.)



**HALOED BRIDESMAIDS**—Attired like the figures in the stained glass windows of old Normandy churches were the attendants of Miss Desiree Welby, daughter of Lady Welby, at her marriage to Capt. G. Guinness at St. James' church, London. (Acme photo.)



**EYES OF THE NAVY**—The powerful searchlights of the U.S.S. Chicago appear like giant eyes as their beams pierce the night during maneuvers off the Pacific coast. (Acme photo.)



**TOY VILLAGE**—The garden of Chiltern lodge, Beaconsfield, England, has been laid out as a complete miniature village by its owner. In this picture visitors are seen inspecting the railway station of the Lilliputian community. (Acme photo.)