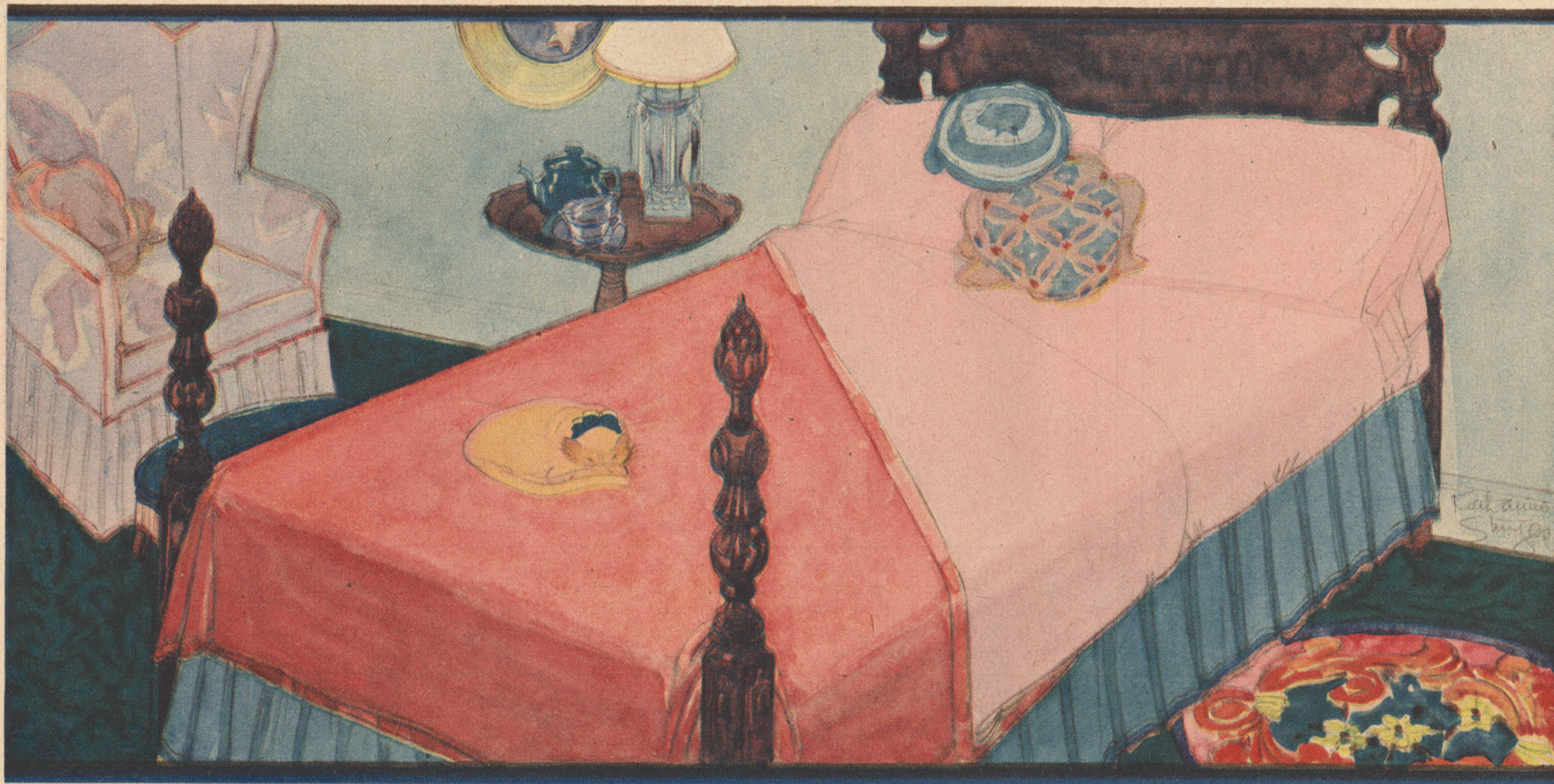


The last word in lovely luxurious rest
LADY PEPPERELL SHEETS in COLOR!



Lady Pepperell Blankets to match your Lady Pepperell Colored Sheets

Soft, warm and thick, Lady Pepperell part wool Blankets come in a variety of soft colors that will match your colored sheets and blend with the decorative scheme of your bedroom.



Baby Pepperell Crib Sheets

Four soft, dainty Baby Pepperell Crib Sheets, white or in color, nestle in this decorative box. Isn't this an attractive gift for a baby's mother?

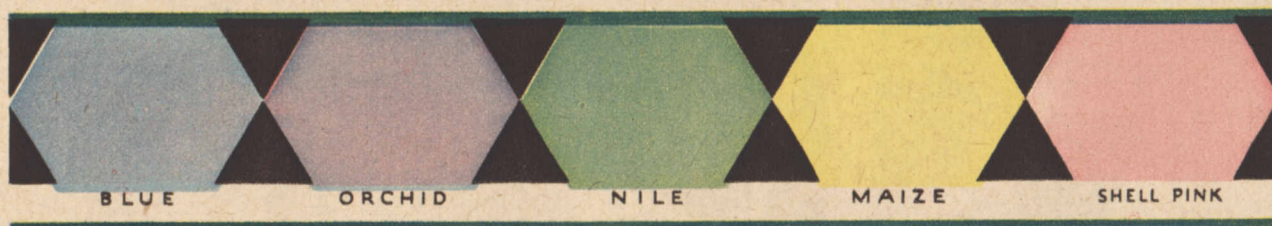
A GAIN Lady Pepperell has done the daring thing—the interesting thing—the fashionable thing. You can now dress your beds in lovely unfading colored Lady Pepperell Sheets and Pillow Cases.

The colors are five—a warm, pale shell pink, a cool blue, a delectable soft Nile, a demure orchid and a creamy maize.

The sheets are of the same light, firm weave as the white Lady Pepperell—they have the same extra-four-threads-to-the-inch. The prices are most reasonable, but little in advance of the white sheets.

And the tints are fast—which means precisely that: fast. Send them fearlessly to the tub, just as you would the white sheet; they'll come back as often and as fresh, their colors undimmed . . .

In Chicago you will find Lady Pepperell colored sheets in all the larger Loop department stores and a great many of the more progressive stores throughout the city. Ask for them by name and we are sure you will have no trouble finding them in any locality. Chicago office—Pepperell Mfg. Co., 222 W. Adams St.



You will find Lady Pepperell Colored Sheets and Pillow Cases, and other Pepperell products in the following stores outside Chicago:

ILLINOIS
 BLOOMINGTON—A. Livingston & Sons
 CARTHAGE—Edw. B. Hackett
 CHAMPAIGN—W. Lewis F. K. Robeson, Est.
 DE KALB—M. F. Malone
 EFFINGHAM—B. J. Petty (Petty's)
 ELGIN—Ackerman Bros.
 Joseph L. Spitzes
 FREEPORT—William Walton Nephews
 GALESBURG—G. W. Marks
 HERRIN—Herrin Supply Co.
 JOLIET—George Ducker Co.
 KANKAKEE—J. LaCour & Sons
 LA SALLE—T. Lucy & Bros. Co.

LINCOLN—John A. Lutz Co.
 MACOMB—Scripps Rens Co.
 MATTOON—Sawin Jones
 MOLINE—Fisk & Loosley Co.
 Yager, Lundt & Co.
 OAK PARK—William Y. Gilmore & Sons
 PAXTON—A. J. Lawrence
 PEORIA—Clarke & Co.
 PEORIA—Joseph Scold
 QUINCY—Hallbach-Schroeder Co.
 H. E. Makutchan & Co.
 ROCHELLE—Grieve & Walker
 ROCKFORD—Hess Bros.
 D. J. Stewart & Co.
 SPRINGFIELD—A. Dirksen & Son
 R. L. Herndon & Co.
 TOULON—Walker Bros.

INDIANA
 BECKNELL—Scott & Co.
 CONNERSVILLE—A. E. Leiter & Co.
 EVANSVILLE—S. G. Evans D. G. Co.
 FORT WAYNE—Frank Dry Goods Co.
 FRENCH LICK—Star Store
 GARY—Boston Store
 HAMMOND—Kaufman & Wolf
 Edward C. Minas
 KENDALLVILLE—Campbell Co.
 SOUTH BEND—The Ellsworth Store
 Robertson Bros.
 TERRE HAUTE—Levi Dry Goods Co.
 VALPARAISO—Specht-Finney Co.

IOWA
 ACKLEY—W. H. Goettel & Son.
 BOONE—Riekenberg Co.
 BRITT—C. P. Lewis, Est.
 BURLINGTON—John Boesch Co.
 CARROLL—Light Bros. Co.
 CLINTON—John D. Van Allen
 DAVENPORT—M. L. Parker Co.
 DUBUQUE—Reshek Bros.
 FORT DODGE—John's Dry Goods Co.
 Tuerke Mercantile Co. (Boston Store)
 KEOKUK—Winger Bros.
 MARSHALLTOWN—Brintnall & Brintnall
 E. K. Lay
 MASON CITY—The Damon-Igan Co.
 MUSCATINE—The Batterson Store

OTTUMWA—T. J. Madden
SIoux CITY—Pelletier Store Co.
 Davidson Bros. Co.
WATERLOO—James Block Dry Goods Co.
 Lauerman Bros.
WEBSTER CITY—E. J. Denny Goods Co.

WISCONSIN
DARLINGTON—J. F. Riemer
FOND DU LAC—Hill Bros. Dry Goods Co.
GREEN BAY—Jorgenson-Blesch Co.
MADISON—Galloway's Golden Rule Co.
 Kessensicks
 H. S. Manchester
MARINETTE—Lauerman Bros. Co.
 Marion—Michaelis & Sons
MENASHA—P. J. Back

MILWAUKEE—T. A. Chapman Gimbel Bros.
 Ed. Schuster & Co.
PARK FALLS—Laemie-Steger Co.
RACINE—Zahn Dry Goods Co.
SHAWANO—Upham & Russell
SHEBOYGAN—H. C. Prange, Inc.
SPARTA—Dodge & Davrs Dept. Store
WAUPACA—J. E. Cristy
WAUSAU—Schmitt-Gage

MINNESOTA
DULUTH—Duluth Glass Block Store
FARIBAULT—Ochs Bros., Inc.
FERGUS FALLS—The Golden Rule
KOSCIUSKI—The Jackson Co.
MINNEAPOLIS—Dayton Co.
 L. S. Donaldson Co.
 The Leader, Inc.
 Powers Mercantile Co.

PIPESTONE—Galloway's Golden Rule Co.
ST. CLOUD—Frank Fandel
ST. PAUL—The Emporium
 The Golden Rule Store
 Schunemans & Mannheimers
WINONA—H. Choate & Co.

MICHIGAN
ESCANABA—J. B. Graydon
GRAND RAPIDS—Paul Stekette & Sons
 Wurzeberger
IRONWOOD—O'Donnell-Seamens Co.
LANSING—Dancer-Brogan Co.
 F. N. Arbaugh Co.
MUSKEGON—W. D. Hardy & Co.

NEBRASKA
GOTHENBURG—Johnson's Dept. Store
HASTINGS—Stein Bros. Co.

LINCOLN—Miller & Paine
 Rudge & Guenzel Co.
OMAHA—J. L. Brandeis & Sons
 Thomas Kilpatrick Co.
 Orchard & Wilhelm
 Thompson-Balden Co.
YORK—Read Dry Goods Co.

NORTH DAKOTA
FARGO—The Black Co.

SOUTH DAKOTA
ABERDEEN—Otwim-Angell Co.
HURON—The Golden Rule Co.
MADISON—The Golden Rule Co.
SIoux FALLS—Shriver Johnson Co.
WATERTOWN—The Schaller Co.

OHIO
ALLIANCE—Spring-Holzworth Co.
MASSILLON—Gensimer Bros.

Lady PEPPERELL
 SHEETS, PILLOW CASES, and BLANKETS