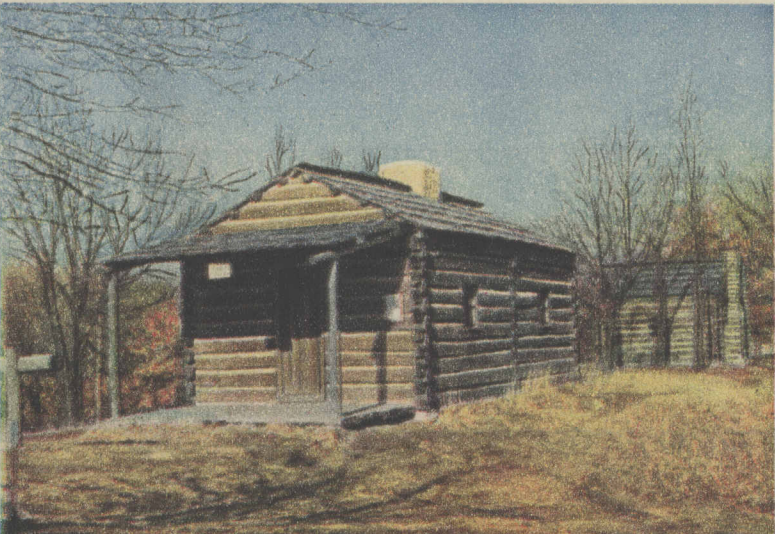


New Salem—Lincoln Shrine

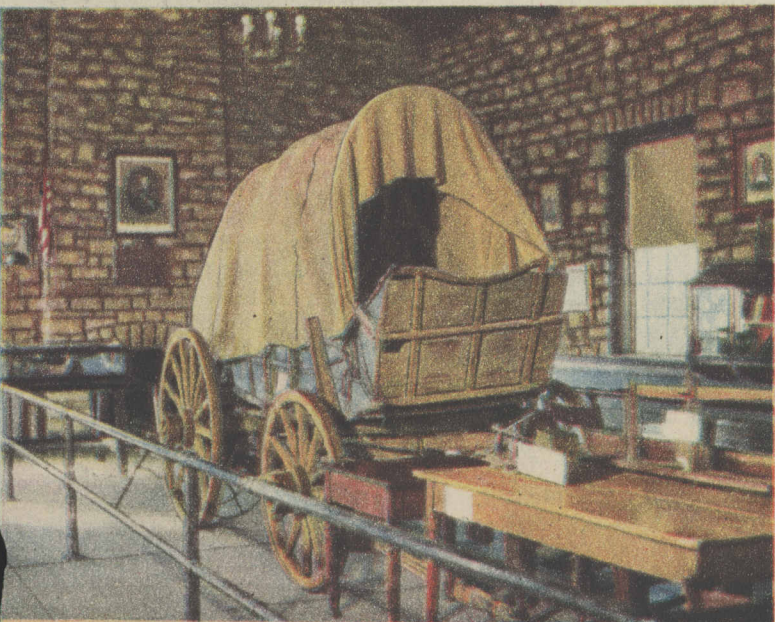
(Story on page two)



General view, looking east, of the recreated village of New Salem. In the original community Lincoln lived from 1831 to 1837. Here he courted Ann Rutledge.



Denton Offutt's store. Lincoln was employed as a clerk by Mr. Offutt, who was forced by debt to flee the village in 1832.



Reminders of Lincoln and his days in New Salem. Covered wagon and other historical relics in the Lincoln museum.



KEY

- 1—Henry Onstot's cabin
- 2—Onstot's cooper shop
- 3—Trent brothers' cabin
- 4—Miller-Kelso cabin
- 5—Miller's blacksmith shop
- 6—Robert Johnson's cabin
- 7—Isaac Gulihur's cabin
- 8—Martin Waddell's cabin
- 9—Isaac Burner's cabin
- 10—Dr. Regnier's cabin

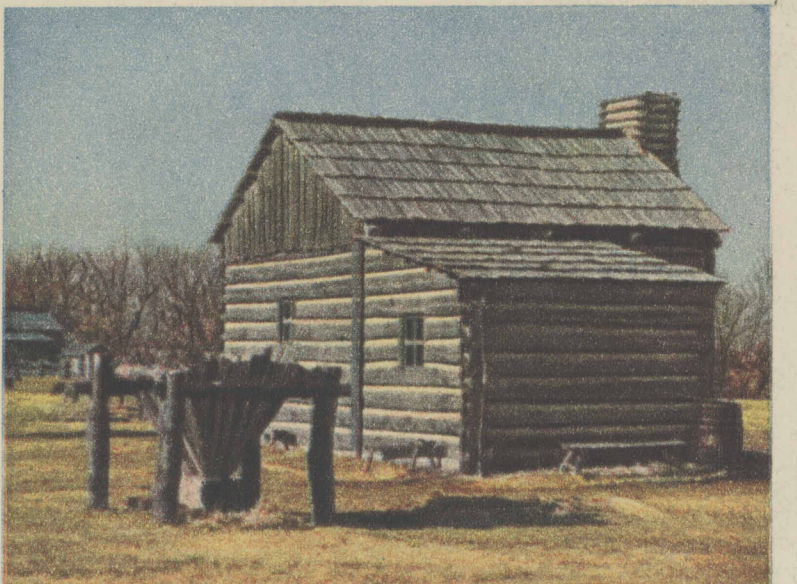


KEY

- 11—Samuel Hill's cabin
- 12—Hill-McNamar store
- 13—Berry-Lincoln store
- 14—Peter Lukins' cabin
- 15—Dr. John Allen's cabin
- 16—Rutledge tavern
- 17—Row Herndon's cabin
- 18—Denton Offutt's store
- 19—Clary's grocery
- 20—Millsite



Berry-Lincoln store. Lincoln was one of the partners of the establishment and village postmaster. He slept in the lean-to.



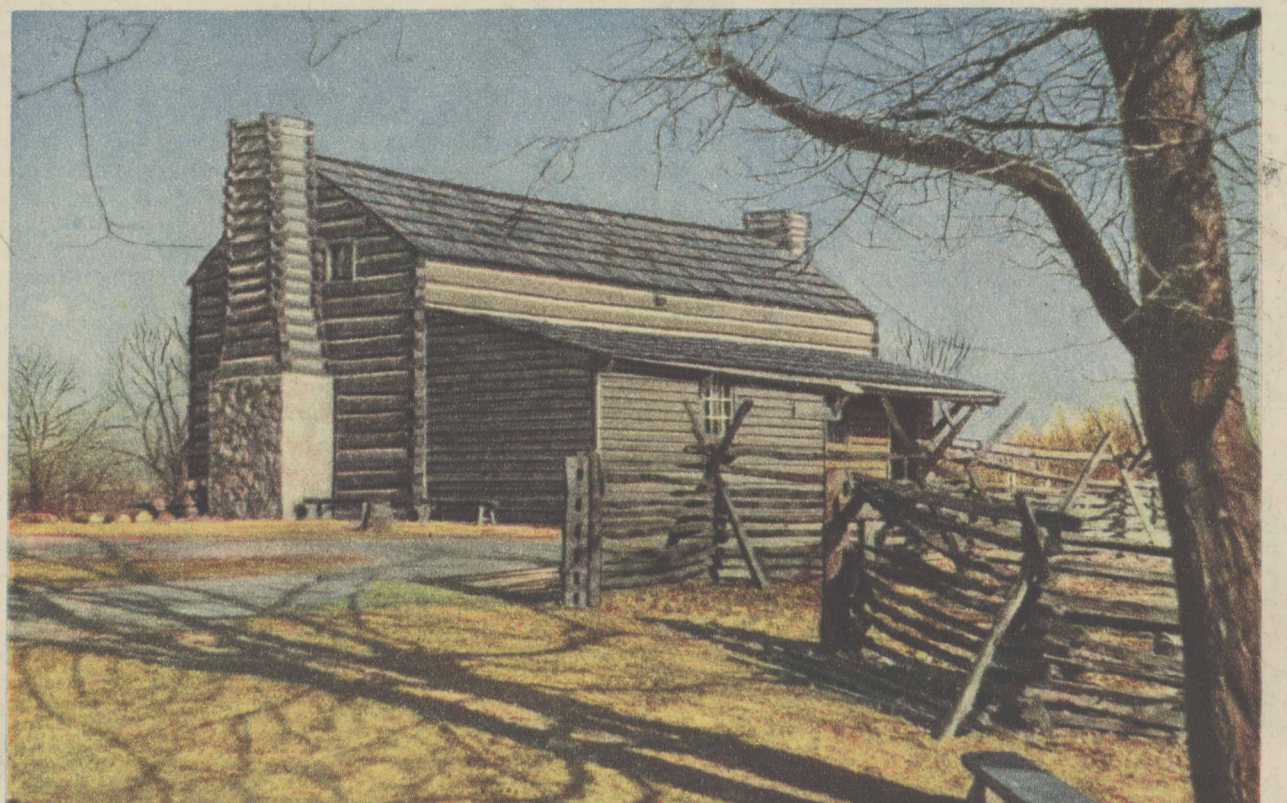
Isaac Burner's cabin. The Burner family arrived in New Salem in 1829 or 1830 and moved away in 1835.



Left to right: Berry-Lincoln store, Hill-McNamar store, Samuel Hill's cabin, Dr. Francis Regnier's cabin.

Principal structures of restored village of New Salem, in New Salem State park, Illinois, are located in the pictorial map. Smaller map shows location of New Salem State park in respect to Springfield.

TRIBUNE
COLOR PHOTOS
BY
GODFREY
LUNDBERG



Rutledge tavern. Lincoln at one time was a boarder in the original structure and slept in the loft.