



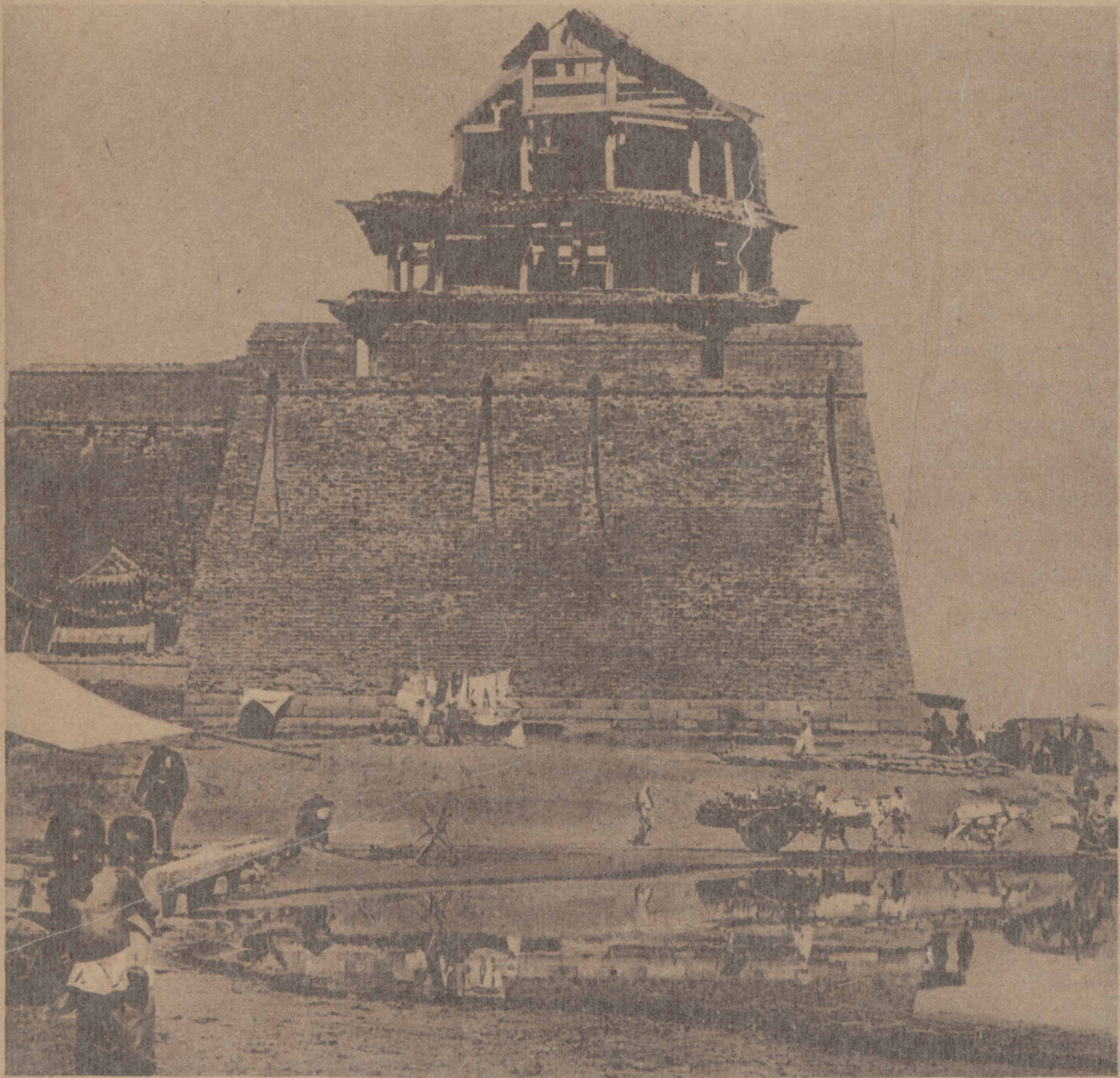
MONARCH OF THE HEIGHTS. This unusual glimpse of a mountain sheep was snapped on a crag in Glacier National park nearly 10,000 feet above sea level. Park rangers say that this particular animal is an outlaw, never running with any of its kind or descending into the valleys in search of salt.

(Photograph copyright by C. L. Sheely)



A HUMAN BRIDGE. In a recent aquatic meet held in the Los Angeles Y. M. C. A. one of the stunts was forming a floating bridge as pictured here. Nine mermaids extended across the narrow end of the pool in the feat.

(Photograph from International)



JAPANESE IN ANCIENT MUKDEN. Troops of the Island Empire, at the request of foreign consuls, concentrated in this Manchurian city early last month to repulse any attempts of the forces of either Chang Tso-lin or Gen. Kuo Sung-ling to enter the foreign section. Later 3,500 Japanese soldiers were ordered there to protect the South Manchurian railroad and other interests in the battle area about the city.

(Photograph from International)



BARONESS ORCZY IN QUEBEC. With her husband, Montagu Barstow, she toured the province, gathering local color for future stories. The baroness is the author of many novels and plays, one of her romances, "An Adventure of the Scarlet Pimpernel," now appearing in the magazine section of The Tribune.

(Photograph from Canadian Pacific)