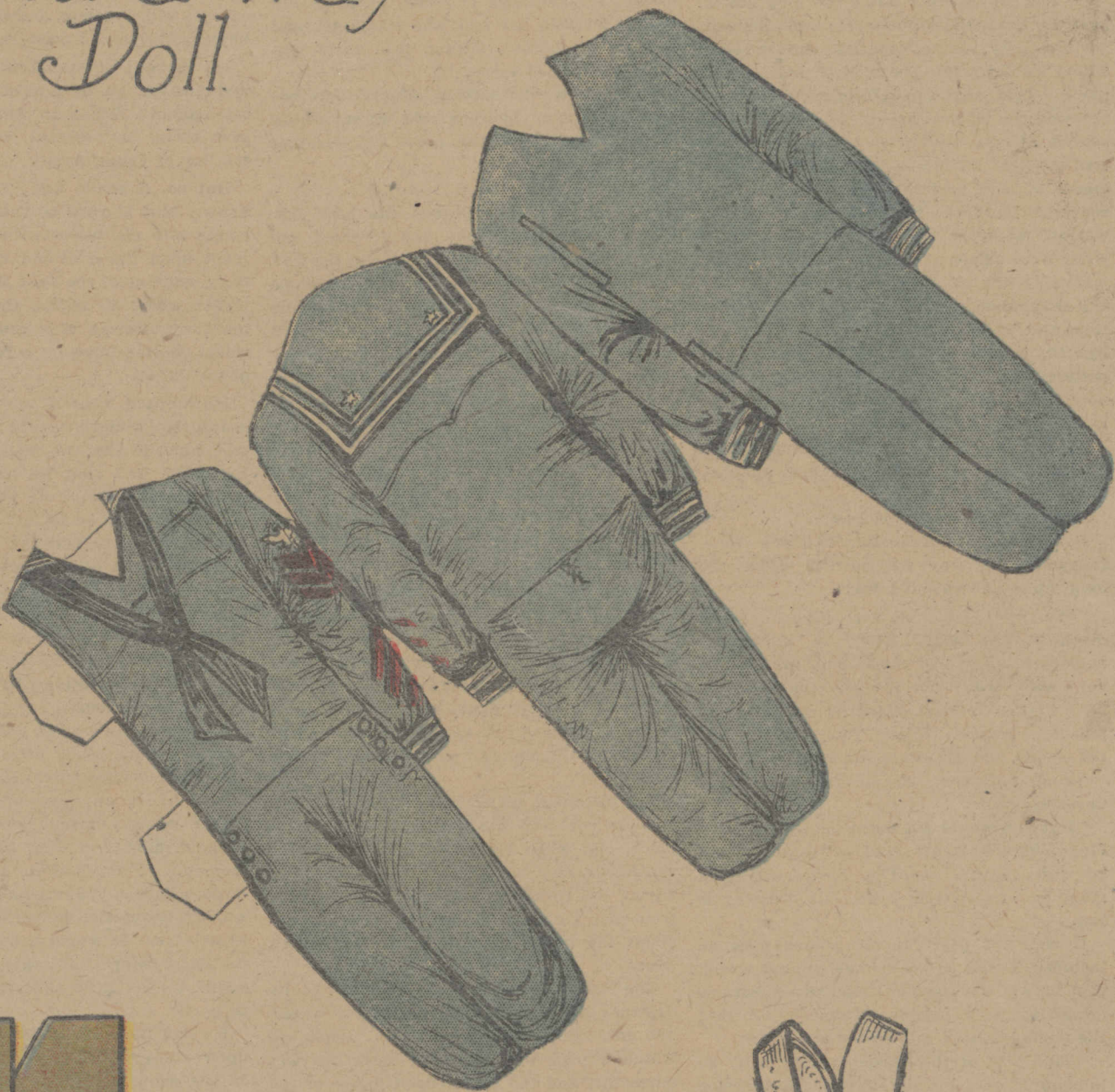
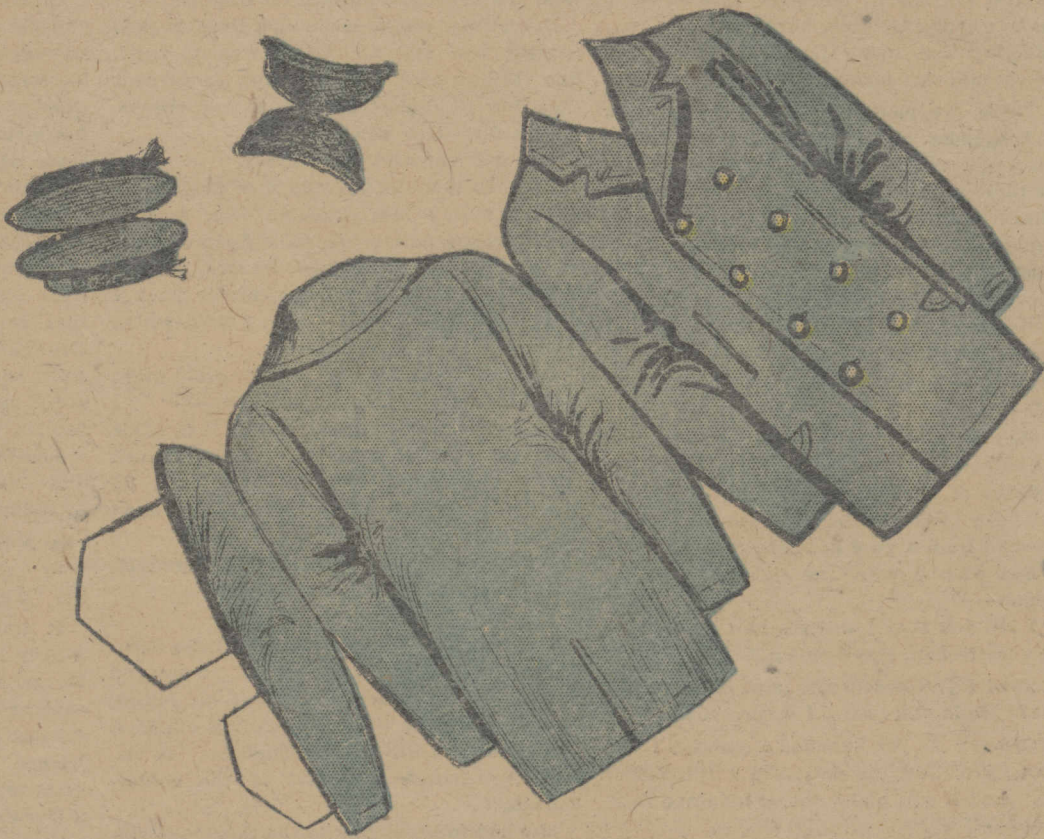
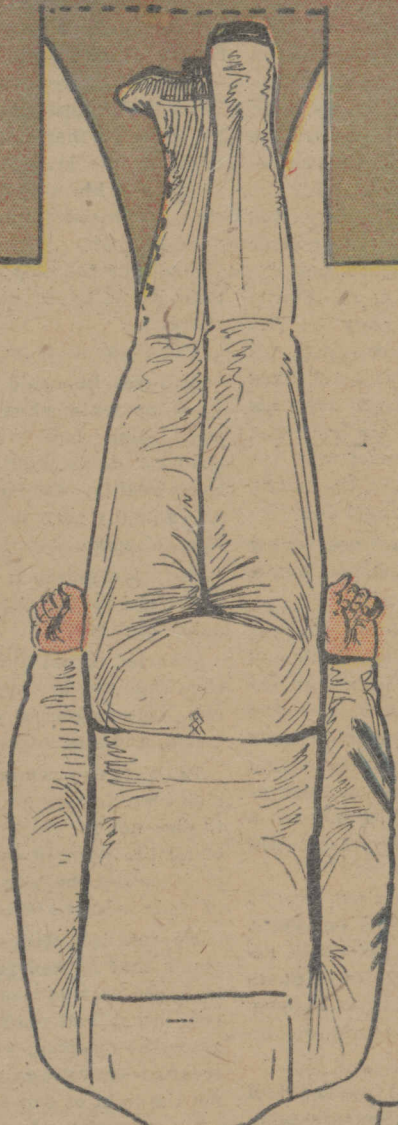


# The Sailor Fold-a-way Doll

## Directions for Cutting Out the Sailor Fold-a-Way Doll

Mount the doll on heavy paper—an old magazine cover will do nicely—when dry, trim off the black lines around the doll; cut into the double lines on the bases to make locks, and into the double lines on body to make slits into which the fastening tabs fit. Fold over directly on the dotted lines at the top of the head and the dotted lines at the feet in opposite directions. Bring the bases together and slide the locks from one side into the locks on the opposite side. The doll will then stand alone.

It will not be necessary to mount the uniforms, etc., but cut into the slits of the clothes; fold directly on the dotted lines and fit the fastening tabs into the slits. Next week the Debutante Fold-a-Way Doll and dresses.



A FOLD-A-WAY TOY  
PATENTED  
JUNE 26 1917  
JULY 10 1917  
Wm. H. Patten