

# Echoes of Panay Crisis

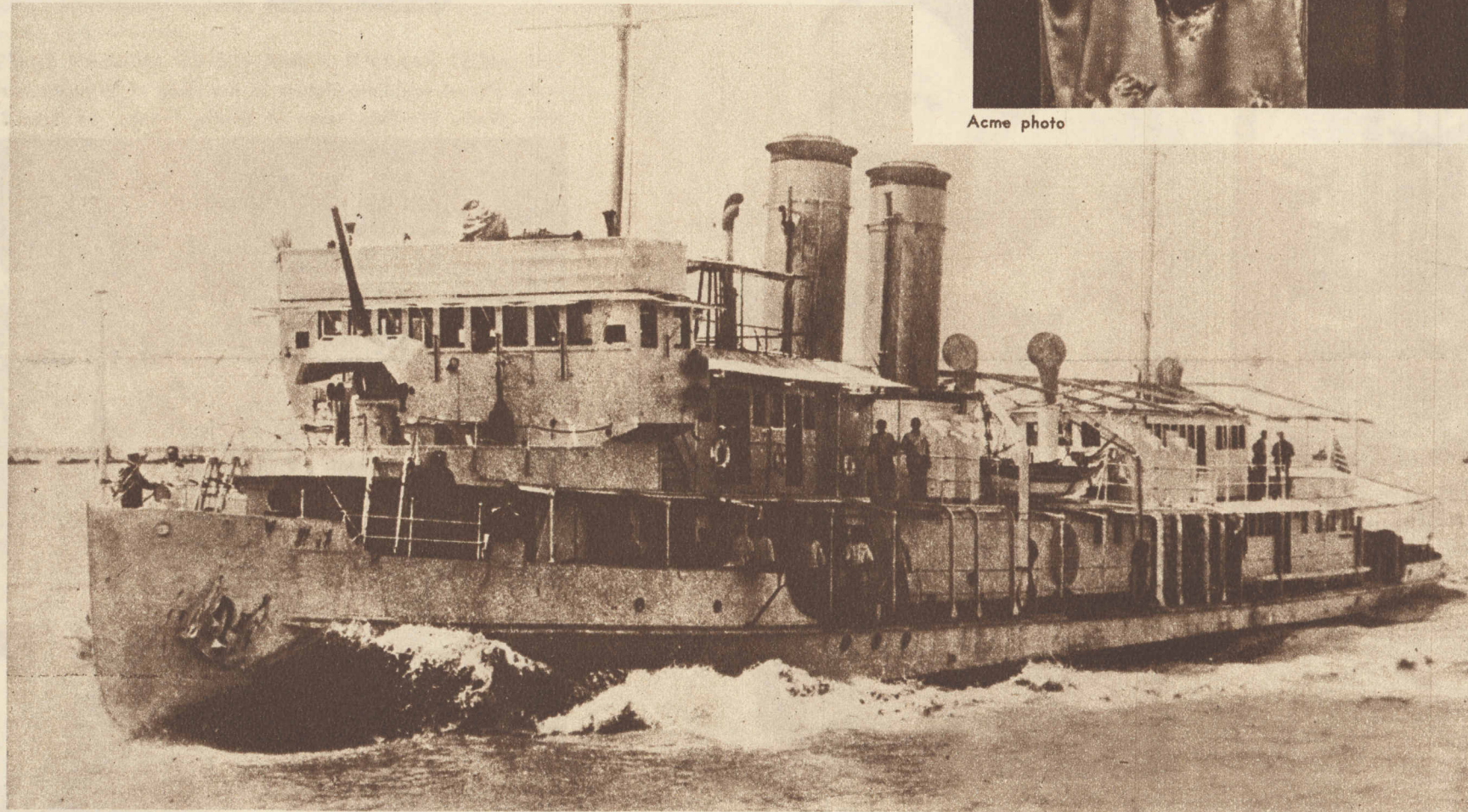


Associated Press photo  
WIDOWED BY JAPANESE BOMBS was Mrs. Charles Lee Ensminger, whose sailor husband was fatally wounded when the gunboat Panay was sunk near Nanking, China. Mrs. Ensminger is shown with flowers presented by the Japanese colony of San Diego, Cal.



Acme photo

CHINA AND JAPAN MEET AT THE WHITE HOUSE—Chengting T. Wang, Chinese ambassador, at a state reception with his daughters, Yoeh, An-Fu, and, An-Hsiu.



Acme photo

THE AMERICAN WARSHIP SUNK BY JAPANESE PLANES—The Panay in Chinese waters.



Photo from Clarence W. Sorensen

BETHLEHEM SNOW-CLAD—A rare scene in the Holy Land. The tower on the horizon crowns the Church of the Nativity.



Acme photo

JAPAN'S AMBASSADOR, Hiroshi Saito, and Mme. Saito at the White House.