

Chicago Sunday Tribune.

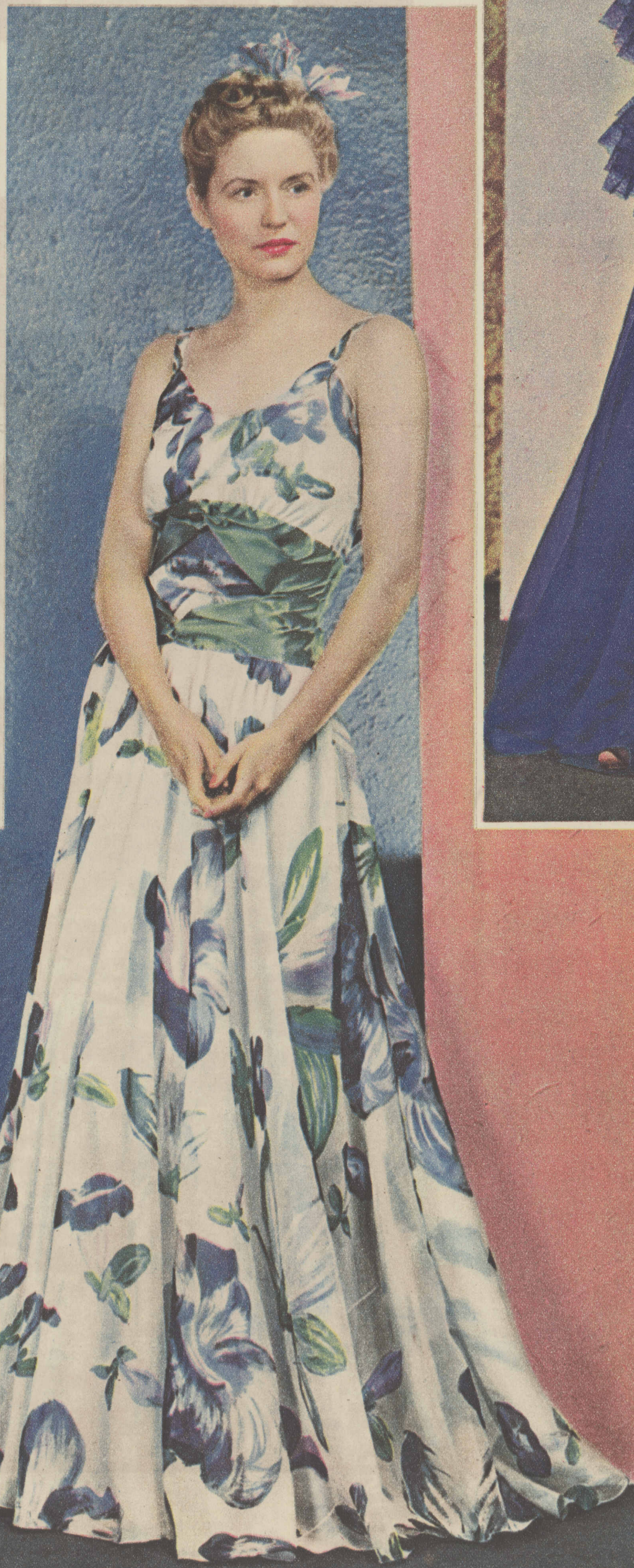
Paris Formalities



Fragile black lace and chiffon are combined in the fitted dinner and dance dress above, by Paquin of Paris. A vivid splash of color appears in the bow tied belt. A shoulder scarf of black also is banded in the lace.



Ruffles trim the midnight blue lace and chiffon evening gown above, designed by Patou. It features a clinging streamline with a deep knee flounce.



Balenciaga, the Spanish designer, uses printed chiffon for a full skirted evening gown cut with a brief bodice. The unusual floral design is of pastel tinted irises.