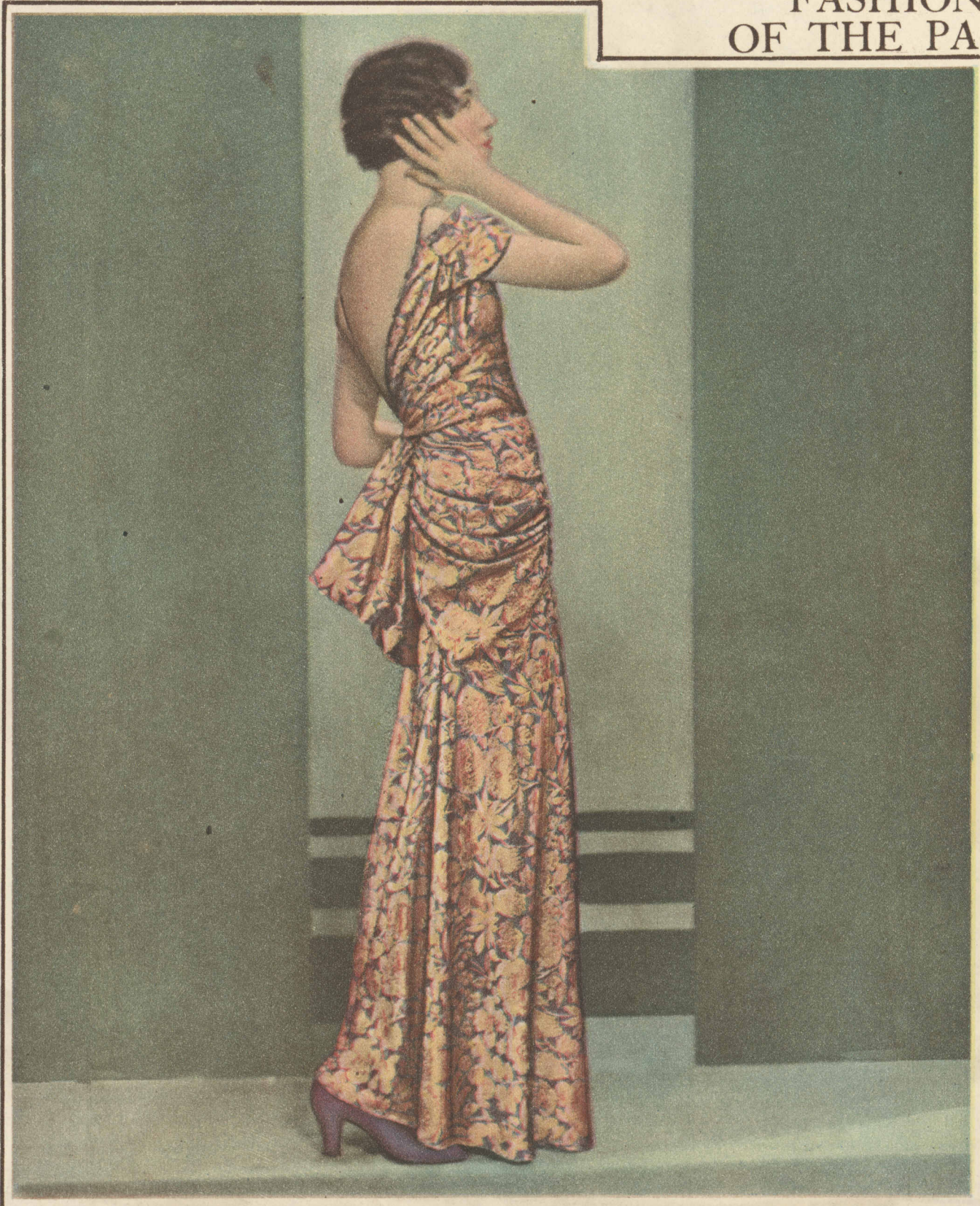


## FASHION FANCIES OF THE PARISIAN FALL



**BACK TO THE 1880 EVENING SILHOUETTE**—Paris makes fashion history repeat itself in this current revival of a mode of other days. Worth makes the dress of royal purple and real gold brocade, gives it little sleeves, and leaves the back bare almost to the waist line.



**THE BEADED EVENING GOWN IS ONE OF FASHION'S DARLINGS**—And Lelong expresses the vogue in this blue net creation, embroidered all over with wavy lines of silver beads, thus making use of a combination which is both new and novel. The necklace and bracelet worn with it here are of white crystal.



**GENUINE LEG O' MUTTON SLEEVES!** In moderate sizes, they are another revival of the fall. Madeleine introduces them in this afternoon dress of amaranth red silk crepe, and makes most of the sleeve of creme lace. Necklace and earrings worn with the costume here are pearl.



**INTRODUCING MOLYNEUX' NEW REVOLUTION SILHOUETTE**—Of gold and red metal chiffon, the dress has an Empire waist and a long skirt that is shirred at the top. The red velvet coat hangs loose from a mother-hubbard yoke and has ermine collar and cuffs. Earrings and rings worn with it here are garnet.

(© Chicago Tribune Press Service photos.)

EXCLUSIVE DESIGNS FROM FASHION'S LEADERS IN THE FRENCH CAPITAL, FIRST PRESENTED TO AMERICA BY THE TRIBUNE