

**MICHIGAN  
STATE  
UNIVERSITY**

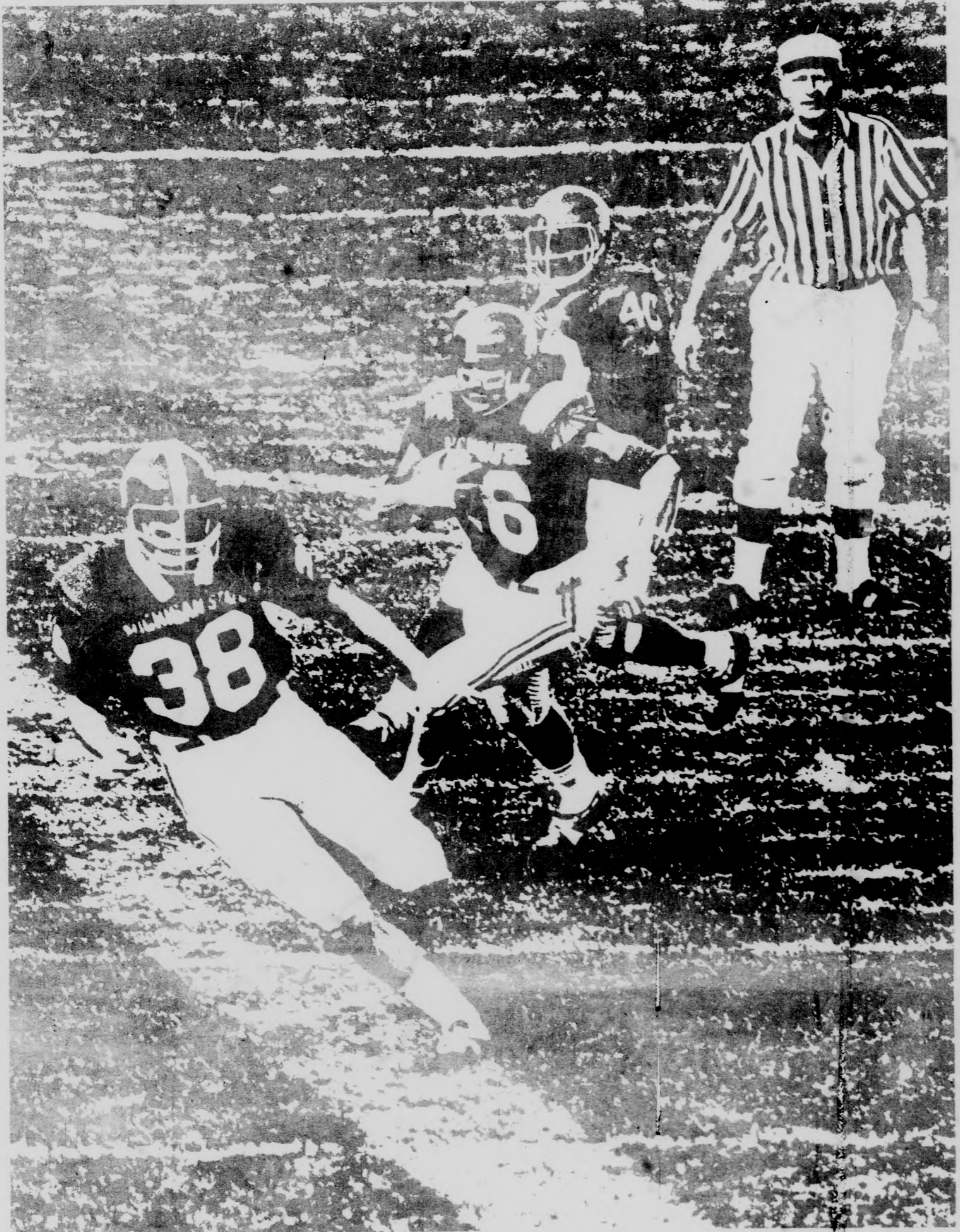


**SPORTS**

# STATE NEWS

East Lansing, Michigan

Friday, October 18, 1968



*Green power*

# 'Searching' sorority girl describes Queen Nancy

By PHYLLIS ZIMBLER  
Feature Editor

"Searching" is the one word Nancy Landis, MSU's 1968 Homecoming Queen, feels best describes her.

She told judges this because one of her main goals is to get to know herself.

The brown-eyed sophomore from Hudson, Ohio, a member Kappa Alpha Theta sorority, answered questions ranging from her personal life to international affairs to capture her title.

As her hometown is in the Cleveland area, Miss Landis was asked whether she thought Carl Stoke's administration was successful or not.

She replied that she thought it was, although the administration has received a lot of criticism because Stokes set out to do more than he has done.

But most people are satisfied with him, Miss Landis added.

When asked what she thought

could be done to improve the campus, Miss Landis said she would like to see everyone involved in something they are interested in.

To a question of how personalized MSU was, she said that she found it a lot more personal than she thought she would. She lived in Hubbard Hall her first year and thought that this living-learning residence hall helped personalize the University.

During her State News interview, Miss Landis said that the suspension resolution is "something that should be looked into." She added that she hopes the administration will see the students' viewpoint and eventually repeal the resolution.

She said that she still doesn't know too much about her new position except for presiding at homecoming activities. She was told that the homecoming queen last year did not do much during the year, and she said she hoped to make the position this year a more functioning one.

Miss Landis will go to Minnesota in two weeks to represent MSU at the National Homecoming Queen contest.

Her court is composed of first runner-up Patricia Fredericks, Detroit junior, and eight other candidates.



QUEEN NANCY



RUNNER-UP PAT

## HOMECOMING

Relive those fond memories. The best memory we could have this year would be the Spartans pushing the Gophers into their holes! Be ready for all the action.



We love active people . . . active people love us!

### 3 Great Locations For Your Convenience

- 1 - 213 Ann Street
- 2 - Corner of Harrison & Wilson Road
- 3 - Northwind Dr. Facing Yankee Stadium Plaza



\*Join Those Who Expect More . . . . . And Save

## As campus rallies, gridgers stay loose

On the Friday before a game while most students give their thoughts to T.G.s, weekend dates or the next day's game, the Spartan football team follows a schedule that takes them from 4 p.m. to game time Saturday.

Regular practice is held on Friday, but it's a short, light workout with most of the team in sweats instead of practice uniforms.

Quarterback Bill Feraco says, "Friday's the day to keep you loose. You spend the day looking forward to the game and in practice you work to put everything you worked on during the week together for the game Saturday."

Friday is also the day that equipment manager Ken Earley takes care of everything the players need done.

"The idea of having things done on Friday is that all the boys have to do is come down on Saturday, get dressed and go out and play ball," Earley says.

For trainer Gayle Robinson and his staff, it's business as usual. The players still have their ankles taped as a precautionary measure before practice. Friday night Robinson and Dr. James Feurig, team physician, make one last check to see that everyone is in good condition.

"You want to do as much preventively as you can do to make sure the players are healthy," Robinson said.

After practice, the entire team heads for Kellogg Center. Dinner is served at 6 p.m. and afterwards the team sees a movie. Choice of the flick is made by asst. coach Cal Stoll.

"It's just a movie to help relax the guys," captain Al Brenner says. Refreshments follow the movie and then it's lights out at 10 p.m.

The team gets up about 9 a.m. Saturday and goes for a walk before breakfast. A team meeting follows and then everyone gets their ankles taped. The famous walk to the stadium then follows as the team goes into its final pre-game activity.

Head coach Duffy Daugherty was asked if anyone on the team has certain rituals they go through some time before the game.

"Everyone has their own pet superstition," Duffy said, "but I only have one. I think it's very unlucky to be behind at the end of the game."

# We Need Your Proofs

PLEASE RETURN THEM TODAY. . . . . TO THE

## 4<sup>th</sup> Floor Union Building

DON'T FORGET.....If you haven't had your picture taken call 353-5151 or 4th Floor Union



# Homecoming starts today—with a T. G.

By DEBORAH FITCH  
Indoor Sports Writer

There's something forever endearing about a football weekend.

Who could help but "fire up" over the parties pre-and post-, the happy hordes and, oh yes, the game.

But a football weekend does not begin with a Saturday morning "pre" and end with a Sunday morning hangover.

It begins with a Friday afternoon T.G. and ends with a hangover. A bad one.

If you don't have a date for the weekend by Friday afternoon at 3 p.m. (official T.G. time) you might end up attending two or three T.G.'s then spending the rest of Friday reeling around the bus station or something because you are so wiped out. With or without that date you were looking for (remember)?

There are a few rules. If you are a girl, you get in free and you don't have to know anybody. If you're a guy, you pay. And you better have a recognizable face or you'll pay again if you happen to go out and then want to get back in.

Everyone who attends T.G.'s seems to fall into types (besides the obvious male and female).

The males fall into four categories.

First, there are the Drinkers. These guys hang around the old keg like there would never be another and guzzle for dear life; foam and all. They fade out of the picture after about an hour.

Nobody ever knows where the Drinkers go. Maybe they topple off the balcony (not difficult), pass out under the pile of coats in the bedroom or someone sets fire to their breath while trying to light a cigarette.

Could be they go home. Monopolizing the balcony next to the drinkers are the Hustlers. They slouch against the railing, beer in one hand, cigarette in the other, and bide their time.

Then the pounce. It doesn't matter what she looks like, if she's got the expected female equipment and is not attached to anyone else, she's fair game.

The Hustler's technique is beautiful if you can keep a straight face; the half-closed eyes, the smoke curling from dilated nostrils (or even ears depending on how bombed the Hustler is), the male version of the old bump and grind as he undulates to the music. Irresistible, right?

Since there's no more room on the balcony, the other two types stay inside.

Ah, the Dancers. Like dedicated football players, the Dancers train all week before their Friday afternoon appearance. They gyrate for hours at a time, pausing only long enough to scrape an exhausted partner off the rug and yank a fresh one into the arena.

Even between records they are all wound up. They sort of

slither over to the keg and back, usually forgetting to get a fresh beer because they're so busy perfecting the movement.

Finally, there are the Travelers. These are the ones who drift up to you and start talking. After about a minute of this, you begin to feel like you have come in at the middle of the conversation and are slowly working toward the beginning. Never fear; just as they drift up to you, they drift away, still talking, and latch onto someone else.

After dealing with a Traveler, you get the vague feeling that you've been handcuffed to a psycho who thinks he's William F. Buckley.

Or Soupy Sales. The girls fall into essentially the same categories except there are fewer Drinkers.

Whatever your type, T.G.'s are an MSU institution, like Duffy and the Red Cedar and you should attend.

If you feel your type has been overlooked, go to a T.G. to make sure you're unique and let us know.



WE CARRY ALL MEXICAN PRODUCTS

SERVING FINE QUALITY MEXICAN FOODS

- TORTILLAS
- TAMALES
- ENCHILADAS
- TACOS

(SPECIAL PACKAGING FOR TAKE-OUT)

Call 489-3536

OPEN - 11 AM - 11 PM - FRI & SAT, 11 AM - 3:30 AM  
CLOSED MONDAY

724 E. GRAND RIVER

**PLAYBOY®**

SAVE AT SPECIAL COLLEGE RATES BEFORE JAN. PRICE INCREASE

Present College Rates	Jan. Rates	Newsstand
3 yrs. \$16.50	\$24.00	\$39.00
2 yrs. \$12.00	\$18.00	\$26.00
1 yr. \$ 6.50	\$10.00	\$13.00
7 mo. \$ 4.50		\$ 8.00

Name \_\_\_\_\_

Address \_\_\_\_\_

City \_\_\_\_\_ State \_\_\_\_\_ Zip Code \_\_\_\_\_

This Offer Available To College Students Only Thru Playboy Campus Representative

CLIP THIS COUPON AND MAIL WITH YOUR CHECK

Payable To: John Pence P.O. Box 422 East Lansing

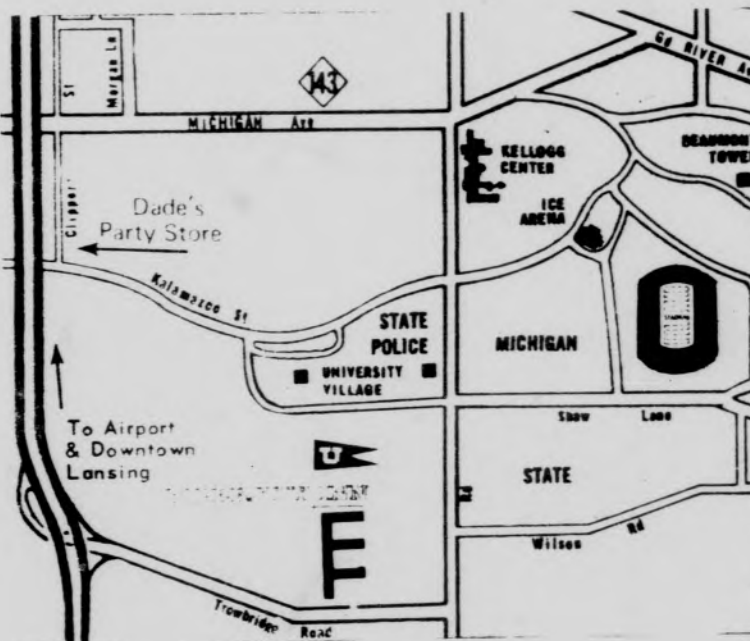
## NEXT TIME---- YOU VISIT MSU---- STAY NEXT DOOR---

Walking Distance to the Stadium

Remote Control TV and Radio

Free Continental Breakfast

SENSIBLE RATES



JUST OFF THE FREEWAY

202 Quiet Comfortable Rooms

Free Inn-Room Coffee

EAST LANSING'S NEWEST AND LARGEST MOTEL

# UNIVERSITY INN

1100 Trowbridge Road Off U.S. 27 & I-496 at Trowbridge Rd. Exit

Phone 351-5500 for Reservations

Area Code 517

# Hexy Gophers 'S' foe

By GARY WALKOWICZ  
State News Sports Writer

Duffy Daugherty does not think Minnesota has a "jinx" over his MSU football team but the Spartans will have a tough time proving his point Saturday.

The Gophers, whom MSU meets in its Homecoming game at 1:30 p.m. Saturday, have beaten the Spartans in their last four meetings and Daugherty's career record against Minnesota Coach Murray Warmath is two wins and six losses.

"Scheduling has contributed a lot to our poor record against Minnesota," Daugherty said.

"We've often been playing them in years when we've had weak teams or they've had strong clubs. In 1965 and 1966 when we didn't lose a regular season game we didn't play Minnesota."

In order to break their losing streak against Minnesota and bounce back from their loss to Michigan, MSU must beat a Gopher team that has suffered losses to top-ranked Southern California and Big Eight powerhouse Nebraska, while beating Wake Forest and Illinois.

Daugherty has called Minnesota "a big, strong and experienced team" and statistics back him up.

Minnesota's linemen outweigh MSU's counterparts by an average of 20 pounds on defense and five pounds on offense. The Gophers starting lineup lists 15 lettermen in the 22 positions.

The highlight of the game could be the battle between MSU's strong running game, which has averaged 246 yards a game, and Minnesota's tough rushing defense.

Anchoring the Gopher's defensive line is All-American defensive end Bob Stein.

"Stein is a real fine football player," MSU Offensive Line Coach Gordon Serr said. "He's intelligent and rarely

makes a mistake."

Besides Stein on the defensive line, the Gophers have Steve Thompson, a highly-regarded sophomore, and three lettermen.

John Darkenwald, Wanye King and Noel Jenke comprise Minnesota's linebacking corps and all are lettermen.

"Offensively Minnesota has a fine passing game and some power running backs who can control the ball," Daugherty said.

Junior Phil Hagen is the Gopher quarterback and his passing record for the year shows 50 completions in 94 attempts for 506 yards and three touchdowns.

Chip Litten has been Hagen's favorite target this year catching 16 passes for 229 yards and one touchdown. Spartan fans should painfully remember Litten from last year when he caught two scoring passes in Minnesota's 21-0 win over MSU.

Starting in the backfield with Hagen are fullback Jim Carter, halfback Barry Mayer and flanker Walt Bowser.

## Bands collide in 'S' stadium

For the first time this season the MSU marching band will share Spartan Stadium with the opponent's band Saturday.

At half-time the MSU band will play and dance to such tunes as "Goody, Goody" and "Goin' Out of My Head," arranged by Bill Moffit, marching band director.

As a special feature of the show, the 180 bandmen will "spin the S," a musical escapade performed in drill and dance fashion.

Harry Began, MSU bands director, has been pleased with the musical team this year.

Began also believes that audience response to the band has been good this year, although he would like to hear more audience participation in the "Fight Song" and the "Alma Mater," especially at Homecoming. MSU has a good "Alma Mater," musically speaking, Began said, and singing is not a corny tradition.

## Swim meet set Saturday morning

As part of this year's Homecoming program, there will be a swimming meet Saturday in the Men's I.M. Bldg. at 10 a.m.

Included in the meet are members of the MSU varsity and freshman swimming teams, plus MSU faculty, staff members and alumni.

## Lacrosse club opens Sunday

The MSU Lacrosse Club opens its fall exhibition season 2 p.m. Sunday entertaining the University of Michigan on Old College Field. Admission is free and the public is invited.



BOB STEIN



CHIP LITTEN

## Gopher line-ups

LE	80	Chip Litten	LE	84	Bob Stein
LT	75	Jim Wrobel	LT	76	Ron Kamzelski
LG	66	Tom Fink	MG	70	Steve Thompson
C	59	Steve Lundeen	RT	65	Jim Pahula
RG	67	Dick Enderle	RE	86	Del Jessen
RT	74	Ezell Jones	LB	60	John Darkenwald
RE	85	Roy Parson	LB	54	Wayne King
QB	15	Phil Hagen	LB	30	Noel Jenke
LH	38	Barry Mayer	LH	18	Dennis Hale
FL	11	Walt Bowser	RH	27	Jeff Wright
FB	34	Jim Carter	S	23	Doug Roalstad

## Your College Life Team in East Lansing

Dick Berry  
Bill Blodgett  
Wayne Cobb

Bill Kempf  
Neale Musolf  
Gary Silvernail

Bob Slade  
Dick Westbrook  
Jae Wright



Jerry Meagher  
-C.L.U.  
Manager

THE COLLEGE LIFE INSURANCE COMPANY OF AMERICA  
The Original and Only Life Insurance Company Serving College Men Only  
INDIANAPOLIS, INDIANA

## FOOTBALL FORECAST

### This Week's Schedule:

MSU vs Minnesota  
Michigan vs Indiana  
Ohio State vs Northwestern  
So. Cal vs Washington  
Notre Dame vs Illinois  
Alabama vs Tennessee  
Arizona State vs Oregon State  
Arkansas vs Texas  
Nebraska vs Missouri  
Purdue vs Wake Forest

College Life Insurance Company	Guest Prediction By:	
	EAST SHAW	WEST SHAW
MSU	MSU	MSU
Indiana	Michigan	Michigan
Ohio State	Ohio State	Ohio State
So. Cal	So. Cal	So. Cal
Notre Dame	Notre Dame	Notre Dame
Tennessee	Tennessee	Tennessee
Oregon State	Oregon State	Arizona State
Arkansas	Texas	Texas
Nebraska	Nebraska	Nebraska
Purdue	Purdue	Purdue

Last Week's Results: College Life 6-4, East Shaw 7-3, West Shaw 6-4. It wasn't a very good weekend for anybody--the Good Guys were so busy selling insurance, they didn't have time to concentrate on predicting the games!

Campus Organizations Wishing To Enter FOOTBALL FORECAST  
Call Jerry at 332-4236

WATCH FOR FOOTBALL FORECASTS EVERY FRIDAY IN THE STATE NEWS



Welcome OI' Grad!

Open After The Football Game

"Hi, George, you haven't changed a bit!"  
Stan—Class of '49

Meet your friends and old acquaintances at Stan Brauer's, M.S.U. Class of '49, for that after the game party. Here is the headquarters for "good fellowship" along with the finest in food and drink.

Brauer's  
1861 Rathskeller

German-American Cuisine—It's Delicious  
Cocktails—Wines—Ales

PARK 'N' SHOP PARKING NOON & EVENING  
IN THE NEW GRAND AVE. RAMP

213 S. Grand

IV 9-4311

**FEATURES 4 EX-BACKS**

# Offensive wall pulls for Spartans

By GARY WALKOWICZ  
State News Sports Writer

The members of the MSU offensive line don't have to be told how much a runner needs good blocking, they know from experience.

Four members of this unsung group of Spartan heroes were fullbacks in their high school days and know the im-

portance of good blocking from a runner's point of view.

From left tackle to right tackle in the Spartan's regular lineup are Dave Van Elst, Don Baird, Eddy McLoud, Ron Saul, and Craig Wycinsky and all but center McLoud have bathed in the limelight of public adulation as a ballcarrier.

Van Elst earned all-state

honors at fullback while playing for Middleville, Mich., High School while the others won various all-league and all-area awards.

Offensive Line Coach Gordon Serr said these Spartan linemen were recruited primarily as just "good, all-around football players" rather than as running backs.

"Only Van Elst has seen any action in the backfield while they've been at MSU," Serr added.

The Spartan offensive line looked good opening holes for the MSU runners against Michigan, but its pass protection wall seemed porous at times.

"We were too aggressive in our pass blocking against Michigan," Serr said. "U-M was in a slanting and stunting defence and our linemen were sometimes moving out too far and actually moving past the Michigan linemen."

Serr's unit will have its hands full this weekend when they go up against a typically tough Minnesota defense.

"Minnesota's defensive line is comparable to the strong lines they've had in the past," Serr said. "They're big, strong and experienced."

Experience is one suit in which the Spartan line isn't very strong.

Junior tackles Van Elst and Wycinsky saw a total of 16 minutes of action last fall, while Baird and McLoud had playing time of 51 and 84 minutes, respectively. Saul had by far the most playing time, 190 minutes, but he performed at tackle in 1967 and thus has had to learn a new position.

"The boys have shown lots of improvement as the season has progressed," Serr said. "There's no substitute for experience and these boys just didn't have any at the beginning of the season. They're

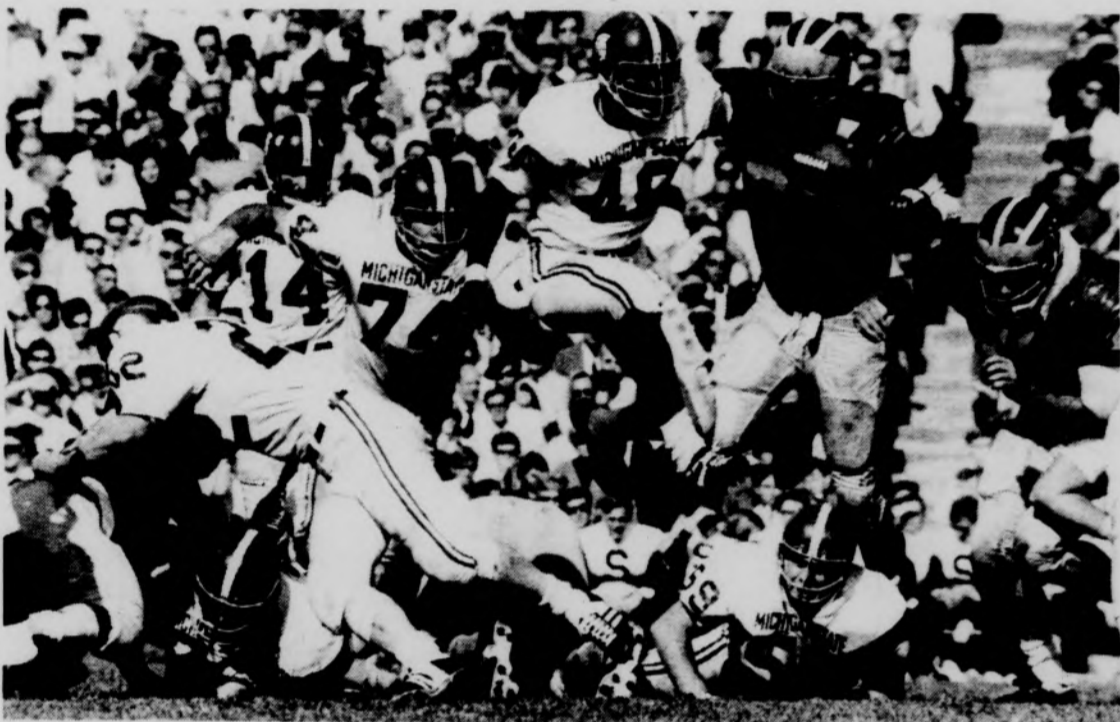


GORDIE SERR

learning different techniques the linemen must use and the best way to learn them is through constant repetition."

Serr said one big plus for the line is that the same five players have comprised the starting five for most of the season.

"Most of our opponents play us primarily as a running team and thus we see a lot of unorthodox defenses," Serr said. "It's very important that our players communicate with each other along the line so everyone knows his job when the defense goes into some lineup we hadn't expected."



## A lineman's life

From one of the least glamorous places in football, offensive lineman Don Baird (59) watches Don Highsmith (40) vault up the middle followed by tackle Dave Van Elst (74). Baird's fellow guard, Ron Saul, is on the ground to the left.

State News photo by Jim Mead

### Spartan line-ups

SE 86 Allen Brenner	LE 97 Wilt Martin
LT 74 Dave Van Elst	LT 93 Tick Benedict
LG 59 Don Baird	MG 65 Jack Zindel
C 75 Eddy McLoud	RT 61 Charles Bailey
RG 70 Ron Saul	RE 85 Ken Little
RT 77 Craig Wycinsky	LB 88 Rich Saul
TE 84 Frank Foreman	LB 95 Don Law
QB 14 Bill Feraco	RB 42 Jay Breslin
TB 26 Tommy Love	LH 43 Frank Waters
FB 22 Dick Berlinski	RH 28 Ken Heft
FL 11 Charlie Wedemeyer	S 86 Allen Brenner



"Have an Old Kentucky Homecoming with chicken from the Colonel."

"Col. Sander's Kentucky Fried Chicken that is."

COL. SANDER'S RECIPE

## Kentucky Fried Chicken

1040 E. Grand River, E. Lansing  
1620 E. Michigan Ave., Lansing

351-5550  
484-7759

•Ye Olde Notice•

## HOMECOMING WEEKEND



## BEGINS AT

# SHAKEY'S

PIZZA PARLOR & YE PUBLIC HOUSE

6527 S. Cedar 393-3250



## BOTH TEAMS UNDEFEATED

# Harriers mix with Gophers

By DON KOPRIVA  
State News Sports Writer

When an irresistible force meets an immovable object, something's got to give.

And that will be the case when the undefeated Minnesota cross country team meets undefeated MSU at 10 a.m. Saturday at Forest Akers Golf Course.

2-0 record, with their second win coming last Saturday over Wisconsin, 27-28. Coach Roy Griak's Gophers stomped Illinois 15-46 last week.

"Minnesota should be the favorite," Spartan Coach Jim Gibbard said, "but if we run like we did in the first two, we have a very good chance to win."

Eastern Michigan, which last week won the 17-team Notre Dame Invitational at South Bend, Ind., with 103 points, will also compete.

Junior Ken Leonowicz, who set meet, course and varsity records of 24:55.8 last week, while beating Wisconsin's Branch Brady, will lead the Spartans once again.

Backing Leonowicz up are sophomore Kim Hartman, who registered a 25:03 against the Badgers, and senior captain Roger Merchant, recovering from a virus.

But Gibbard has emphasized all season that "it's the team that wins, not one runner."

MSU's split or time difference between its first and fifth man in the first two meets has hovered around 70 seconds, but Gibbard hopes that will be lower this week.

To achieve a close split,

Gibbard hopes his fourth through seventh men—Dan Simeck, John Mock, Dick Aslin, Chuck Starkey—will huddle closer together and try to stay up with the Spartans' big three.

Minnesota is led by Steve Hoag, senior captain, last year's third place finisher in the Big Ten meet.

Other top Gophers include Ken Page, Bob Wagner, Curt Dockter and Ed Twomey.

Top runners for EMU are Charlton Baldwin, Ken Head, Chris Ablahl, Al Ruffner and Glenn Dusk.

The meet will be scored as a double dual, with MSU meeting Minnesota and Eastern, and with Eastern and the Gophers also tangling on the scorer's table.



KIM HARTMAN

### Dining Out Is 'IN' At 'JIM'S'



GREEK SPECIALTIES  
EVERY SATURDAY EVENING  
—A GOURMET'S DELIGHT—

BROILED CHOICE STEAKS  
AND SEAFOOD NIGHTLY

# JIM'S

RESTAURANT & TIFFANY LOUNGE  
116 E. MICHIGAN—DOWNTOWN LANSING  
FREE EVENING PARKING  
489-1196

## Homecoming '68: starred, spangled

Basing its theme, "Unprecedented Presidents," on this year's Presidential election, Homecoming '68 provides a weekend of star-spangled events.

The Yankee Doodle week-

end features everything from a "Yell Like Hell Contest" to the annual Homecoming Dance.

This year's Homecoming will be kicked off with a street dance, beginning at 3:00 p.m. Friday afternoon between the Men's I.M. Bldg. and Spartan Stadium, which will feature the "Paramounts."

Jim White, homecoming chairman, said that "Unprecedented Presidents" will offer "changes, with revivals of old tradition."

One of these changes will be the "Yell Like Hell" contest which was popular at the University of Wisconsin.

Terri McDonald, chairman of the Friday kick-off, explains "Yell Like Hell" as an event contesting, "which dorm, sorority, fraternity or co-op can make the most original cheer concerning the game between Minnesota and MSU."

Like all Presidential campaigns, a motorcade is in the offing, following the street dance.

Popular Entertainment will feature Lou Rawls at Jenison Field House in a Friday evening of soulful singing. A bonfire follows across from Wilson with a march to the Union where the State singers entertain. Sentimentality will conclude Friday's activities with the traditional Midnight Sing at Beaumont Tower.

In accordance with "old tradition," living units will compete in a float building contest to be centered around the theme of "Unprecedented Presidents." This year's floats judged on Saturday morning, fall into one of two categories: on campus and off campus.

Even if you break out from apple pie, hate your mother, and don't get choked up over "America the Beautiful", this year's Homecoming Committee hopes to make "Unprecedented Presidents" unprecedented.

"COCA COLA" AND "COKE" ARE REGISTERED TRADE MARKS WHICH IDENTIFY ONLY THE PRODUCT OF THE COCA COLA COMPANY.



Blind dates are a chance. But you can always depend on refreshing Coca-Cola for the taste you never get tired of. That's why things go better with Coke, after Coke, after Coke.



Bottled under the authority of The Coca-Cola Company by: Coca-Cola Bottling Company of Michigan



### Sitting one out

MSU soccer star, Trevor Harris, gives a pained expression after falling during last Saturday's MSU Air Force contest. Looking on is MSU's Frank Morant. State News photo by Larry Hagedorn

## Traveling Spartan booters tackle tough Akron today

By PAM BOYCE

State News Sports Writer

MSU's soccer team meets its equal this afternoon as it encounters the undefeated Akron team on the Zip's turf.

The Spartans, unbeaten in seven games and unscored upon, collide with the Zips, unbeaten in six outings, and MSU Coach Gene Kenney expects trouble.

"We had trouble with them last year. In fact, at halftime last year, we were down 2-1."

The Spartans went on to win, however, 4-2, and then beat Akron again in the NCAA tourney, 3-1.

MSU will keep close tabs on Jim Malcolm, senior from Dundee, Scotland, Malcolm, leading scorer in Ohio with 13 goals to his credit, last year broke through the Spartan wall twice.

The Spartans will also watch John Kissner, last week's No. 4 scorer in the Ohio Collegiate Soccer Assn. (OCSA).

Both MSU and Akron have met the University of Illinois-Chicago Circle soccer team. MSU outscored the Chikas, 4-0, while Akron won 4-1.

Akron, 12-3 last year, has yet to beat the Spartans in eight attempts. As OCSA champions eight out of the last 10 years, they have outscored their opponents this year, 29-6. MSU has 59 goals this season, but has yet to yield one.

Coach Kenney feels that playing in Akron will definitely make a difference to his team.

"The home field means a lot to you. We will have to play at least as well as we did Saturday against Air Force, if not better, if we expect to beat Akron," Kenney said.

"Akron has a high-scoring offense and a stingy defense. They are a well-balanced team."

Trevor Harris and Tony Keyes will lead the Spartan attack today. Harris, MSU's leading scorer with 13 goals and 13 assists, broke the season record of 11 assists last week. Keyes is the Spartan's second highest scorer with 19 goals and five assists.

# The SPARTAN THIRD HALF

THE PERFECT AFTER THE GAME HOMECOMING DATE

Buffet includes  
assorted relishes  
chef's salad  
cottage cheese  
choice roast beef au jus  
lobster newburgh  
potatoes au gratin  
french cut green beans,  
dessert.

FOR JUST \$2.50.

Everyone is welcome, there is no Age Limit. An assortment of sandwiches and your favorite beverages will also be available. Following the game until 8, at

**Grandmother's**  
3411 East Michigan (Just West of Campus)  
Phone 332-6565



1969 RENAULT 10 FOUR-DOOR SEDAN 1969 RENAULT 16 FIVE-DOOR SEDAN-WAGON

ROAD TEST MAGAZINE RATES RENAULT NO. 1

--FOR THE SECOND CONSECUTIVE YEAR--

A Compact Car with Outstanding Economy ... Plus Style, Comfort, Dependability, Performance! The Renault 10 is an economy car that is also outstanding in its price field for many other reasons. It is a luxuriously comfortable sedan that is fun to drive, easy to park and maneuvers like a sports car. Test drive it! Re-discover the fun of driving. Discover a new economy in car ownership!

\$1775 P.O.E.

A Compact Car with The Big Innovation: Sedan Comfort Plus Station Wagon Utility! The Renault 16 is quickly and easily converted from a comfortable sedan to a big-capacity station wagon. Here is a sedan-wagon in a compact size that handles like a heavier sedan on the highway. Try it! And see how you can change the interior 7 ways, to suit any trip, errand or passengers!

\$2395 P.O.E.

Al Edwards **SPORTS CAR CENTER**

1200 E. Oakland, Lansing (Overseas delivery arranged) PH. 482-1226

**Before the game, buy a mug.  
After the game, toast the Spartans!**



# **MSU**

## **BOOKSTORE**

*In the Center for International Programs.*

OPEN  
SATURDAY  
8:30 - 12:30