

It Is Now . . .

. . . a commonplace that the dissenting opinions of one generation become the prevailing interpretation of the next.
--Burton J. Hendrick

MICHIGAN STATE UNIVERSITY



STATE NEWS

East Lansing, Michigan

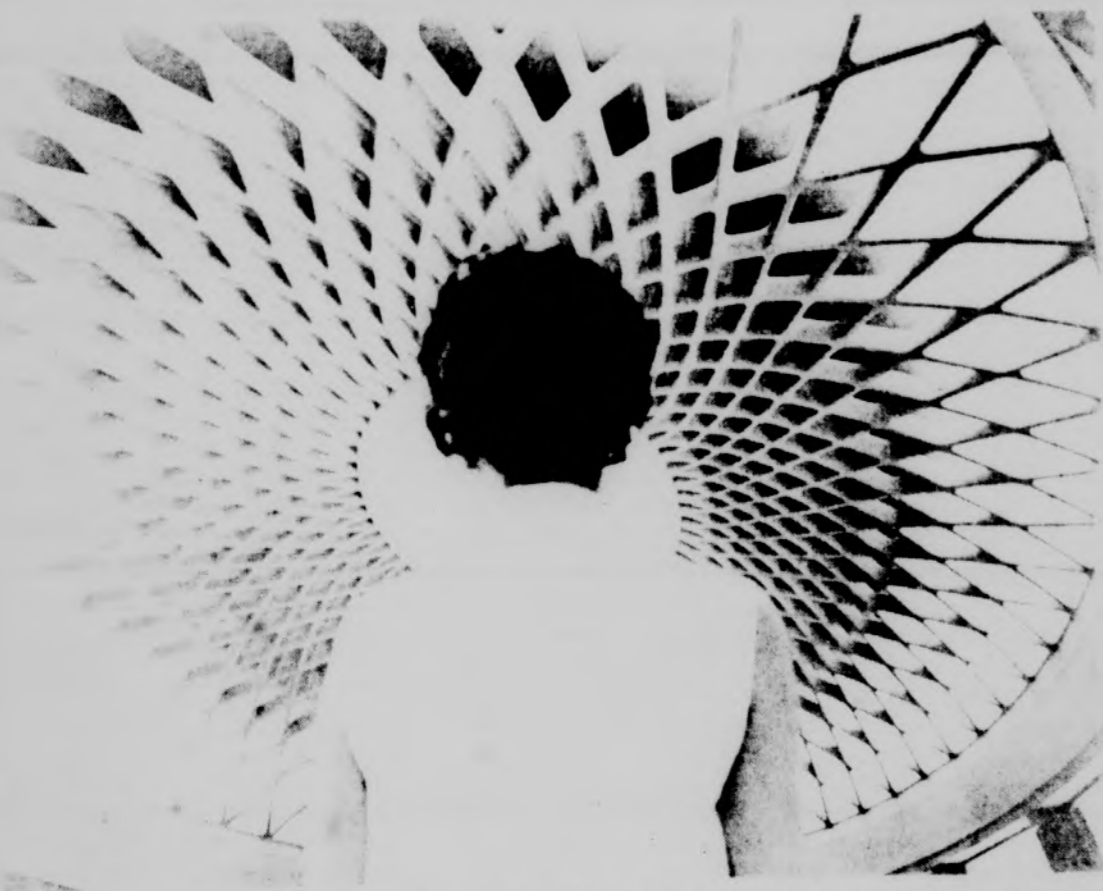
Tuesday, June 29, 1965

Price 10c

Partly Cloudy
Cloudy and cooler and less humid today with temperatures 75-80.
WEDNESDAY: Fair and cooler. High in the 70's.

Vol. 57 Number 2

ASMSU APPROVES NINE-MAN RIGHTS COMMISSION



WHEN IN ROME...It looks almost like this MSU coed is in one of the buildings designed by Pier Luigi Nervi, noted Italian engineer. Actually she is viewing one of 15 photographs now on exhibit at the Union as part of the University Fine Arts Festival. Nervi's unique use of engineering in architecture has won him the Gold Medal for architectural design.
Photo by Cal Crane

Neo-Gothic Era Expressed By 'Master Builder' Nervi

By FAYE UNGER
Entertainment Editor

Pier Luigi Nervi, an Italian engineer, started pre-fabricating concrete buildings 20 years ago. At the 1964 American Institute of Architecture he added the Gold Medal for Architecture to the awards his concrete constructions have netted him.

The exhibition of 15 photographic panels he prepared for the convention that awarded him the Gold Medal is now set up for the month of July in the Union concourse.

High domes interlaced with intricate geometric patterns float atop curving buttresses in a series of photographs and that include UNESCO headquarters in Paris, the sport palaces for the 1960 Rome Olympics and the George Washington Bridge Bus Terminal in New York City.

"Master builder" Nervi, now 74 years old, has been working with reinforced concrete for more than 50 years. He still supervises every detail of construction from conception to completed building.

After working as a draftsman for the Society of Concrete Construction in Florence, Nervi set up his own construction firm in 1923.

He soon came to feel, he said, that concrete was a material unsurpassed in expressiveness. It provided, in his eyes, the key to construct the large public buildings and industrial plants modern society demanded.

He developed the ferro-cemento process of spraying layers of fine steel mesh with cement mortar to form thin, rigid prefabricated slabs during the 1940's.

Nervi regards his constructions as the architecture of a new Gothic era.

"A strict collaboration between architect, engineer and contractor becomes necessary

and this brings us back to the superb period of Gothic architecture--the highest expression of a true art of building," he writes.

His modern cathedrals of labor and industry have an air of lightness reminiscent of the Gothic church cathedrals, but his constructions, massive and tall, do not strain for heaven. They just hover above the earth.

Sponsored by the lecture-concert series, the fine arts festival and the Department of Landscape and Architecture, the Nervi exhibition, part of the fine arts festival, is on display in the Union until July 25.

It is touring the United States through the Smithsonian Institution.

Nervi received his doctorate from the University of Bologna in 1913. Since 1947 he has taught

technology and structural techniques at the University of Rome. The exhibition covers his work from the municipal stadium in Florence (1929 to 1932) with its cantilevered roof and external staircases, to the Nathaniel Leverone Field House at Dartmouth College (1962).

Deadline

Deadline for fraternity resumés for the fall Welcome Edition is today. The following units should call the State News at 355-8255 or see Arthur Langer in 345 Student Services:

Sigma Chi; Sigma Alpha Mu; Phi Kappa Psi; Phi Kappa Phi; Phi Kappa Sigma; Phi Sigma Kappa; Theta Chi; Lambda Chi Alpha; Delta Sigma Phi; Beta Theta Pi; Alpha Sigma Phi; Alpha Epsilon Pi.

AFM Earns 'Bold Baton'

The American Symphony Orchestra League has given the American Federation of Musicians its Gold Baton award for its sponsorship of the Congress of Strings, now in session on campus.

Secretary of Labor Willard Wirtz, representing AFM president Herman Kenin, accepted the award from John S. Edwards, manager of the Pittsburgh Symphony at the 20th national conference of the League in Washington, D.C.

The Congress of Strings discovers and develops string musician talent for orchestras throughout the United States and Canada.

Winners of community auditions attend an eight-week practice session under prominent conductors and first chair musicians at the University.



SOME EXPERT ADVISE--Ron Reichler, base viol student from Bayside, N.Y. received some expert advice from instructor Warren Benfield. Tryouts for the Congress of Strings Orchestra are now completed and students will be practicing up for the first of their big concerts July 9.
Photo by Cal Crane

'Police And Civil Rights'

Police-Community Hostility Inevitable

Two representatives from the Michigan Civil Rights Commission and about 30 police chiefs met Friday for the state's 6th regional seminar on "The Police and Civil Rights."

Gorden Hanna, public information director of the Commission and Mrs. Olive Beasley, director of the Flint branch, joined Ingham County prosecutor Donald Reisig and MSU professor of police administration Louis Radelet in a panel discussion over the recent breakdown in police-community relations.

Lansing Police Chief Charles Stragler was panel moderator and host for the seminar, the 6th out of 10 that began June 15 in River Rouge. The next seminar will be July 7 in Battle Creek.

Speaking for the Civil Rights Commission, Mrs. Beasley said, "We are trying to get the hostility out of police-community relations."

Reisig felt that hostility, especially in the area of civil rights, was inevitable. "Take the situation in Lansing," he said.

"Even if we assume that all the policemen were sympathetic with the demonstrators, by carrying out their commands they have alienated the 59 who were arrested. Every time an arrest is made in an incident with racial overtones, the policeman's image is distorted."

Mrs. Beasley argued that "those who get involved with civil disobedience do it with the purpose of invoking law enforcement. They are aware of the consequences."

"The image is destroyed not by the policeman doing his duty, but only if he abuses his authority."

Radelet attributed the hostility to a gap in police and community objectives. The community's

aim is not to 'love that police officer', but to respect an officer in spite of the fact he is doing a job that you might resent."

"Some stress and strain is inevitable by the necessity of the police function," he added. "We must work effectively in our liaison and communication with minority groups."

Reisig found evidence of communication breakdown in the area of civil rights demonstrations. "The problem is to convey our willingness to protect the rights of demonstrators to demonstrate."

Radelet added that "no police department is concerned about organized, responsible demonstrations by groups who set up ground rules."

Taking exception, Reisig felt that "there is a fear among law

(continued on page 5)

Six Can Still Go Abroad

Students interested in studying French, German or Spanish in Europe this summer can still enroll in MSU's overseas language program sponsored by the Continuing Educational Service.

Credit courses are offered by the American Language and Educational Center (AMLEC) in Paris, France; Cologne, Germany and Madrid, Spain. Non-credit programs are scheduled for Lausanne and Neuchatel, Switzerland; Barcelona, Spain, and Florence, Italy.

The courses will run from July 5 to August 20.

Sheldon Cherney, director of the Office of International Extension for AMLEC, said seats for six students are still available on the second charter flight leaving for New York and Luxembourg on Thursday, July 1.

He added that both credit and noncredit courses are supplemented by optional lectures and trips to points of interest.

Double Present Capacity

3rd Plant To Start In Fall

By PHYLLIS HELPER
Student Services Writer

MSU's new \$9 million power plant, under construction since the summer of 1964, will begin operations in the latter part of October.

Located south of the stadium between the Grand Trunk and Chesapeake and Ohio Railroad tracks, the new plant is the third to be built on the MSU campus.

The first plant on North campus is now obsolete and will be removed following completion of the new building. The second plant, built in 1946 and known as the South Campus plant, is now the Shaw Lane plant and will continue operations.

The new plant will be working at full capacity of 25 thousand kilowatts per hour, doubling the present capacity of the two plants.

MSU normally uses about one-tenth the amount of power used in the City of Lansing.

The old North and Shaw Lane plants will continue working during the initial stages of the new plant's operation to make sure it is working correctly. The North plant will eventually be phased out of operations during the winter of 1965.

Because all three plants will be in operation at the same time, there will be a need for labor.

Theodore Simon, director of the Physical



POOLSIDE CAPERS--A refreshingly cool splash into the IM pool is one of the better ways MSU students are finding of beating the heat. See related pictures and story on page 8. Photo by James H. Hille

Temporary Steering Group Set

Carl Friberg
Chairman

By CHAR JOLLES
State News Staff Writer

The Associated Students of MSU has unanimously approved a nine-man Human Relations Commission.

Petitioning opens today for a temporary four-man steering committee to represent student government and make tentative plans for the Commission's Human Relations Week in the fall. Petitions are available in 101 Student Services until tomorrow.

Carl Friberg, president of Inter-Cooperative Council, was appointed chairman of the Commission and of the steering committee.

The Student Board Chairman will select seven of the Commission's members from open petitioning in the fall, with the approval of the Board. One Board member and a faculty adviser selected by the Office of the Vice-President for Human Relations will also be on the Commission but will have no vote.

Friberg hopes for members representing a cross-section of nationalities and interests.

"Yet we don't want to split the Commission up into so many parts that it can't function," he said. "We need level-headed people who are willing to work through compromise."

He cited four objectives of the new Commission:

--Educational in the line of human relations. First on the agenda is Human Relations Week, scheduled for the beginning of fall term.

--A proper channel of grievance for students with complaints in the human relations area. "We will work with Pat Smith's off-campus housing office as much as he wants," Friberg said.

--Act as a channel of communication between East Lansing and the University. The Commission will meet with the East Lansing Human Relations Commission next week and plans to work closely with it in the future.

--To coordinate human relation activities between the University and East Lansing.

Friberg said he would like to see the MSU Commission serve a shot-in-the-arm function for the University as well as East Lansing.

Though the Commission will be a recognized student voice in the area of human relations, "there will be no demonstrating, or anything like that," Friberg said.

"If someone brings in a case, the Commission will take it to the proper authorities," he explained. "For example, if there is a complaint of discrimination in a fraternity, the Commission will refer the case to Inter-Fraternity Council for mediation and conciliation."

"If IFC does nothing, the Student Board can consider the case, but we are not clear yet about the action it can take. If conciliation is unsuccessful, we can say 'shape up or ship out' and recommend that the University take it off approved housing."

The Student Board has no authority over unapproved housing. The Faculty Committee On Student Affairs is now considering

(continued on page 2)

THE INSIDE LOOK

MSU Mission In Viet Nam

A member of the mission and a new book by two MSU professors express two different views. See story on page 2.

Two Seniors Go To Jail

Two MSU seniors visited Southern Michigan Prison as part of their class last term. See story on page 3.

EDITORIAL

The Missing Complainant

The case of William M. Smith, a former student who filed a complaint of housing discrimination with the Michigan Civil Rights Commission over a year ago, graphically illustrates the need for local open occupancy ordinances.

The complaint was filed against an East Lansing realtor in April, 1964. Attempts at conciliation failed, and a hearing was set for June 21, 1965--15 months after the filing of the complaint.

However, Smith has left MSU. The hearing has been adjourned until Smith can be found or forced by court order to appear at a new hearing.

If East Lansing had a local ordinance prohibiting racial discrimination in rentals or sales by a realtor, the case might have been settled while Smith was still here.

The Michigan Civil Rights Commission does not have the staff to speedily handle complaints of housing discrimination from throughout the state. It must be remembered that the Commission is charged with responsibility for investigating every type of racial and religious discrimination.

Housing is only one aspect of this imposing job.

State Attorney General Frank J. Kelly's opinion that communities do not have the right to pass open occupancy ordinances now seems to be invalidated.

The judge who presided over a case to determine the constitutionality of Ann Arbor's open occupancy ordinance ruled that the law was not wholly unconstitutional. This is in direct contradiction to Kelley's opinion.

East Lansing City Attorney Raymond R. Campbell also believes that the state constitution allows local communities to pass open occupancy laws.

It is a basic tenet of American government that an attempt should be made to settle problems at a local level before the state and federal governments are brought into the picture.

Fifteen months is simply too long to wait in a case involving housing discrimination. After all, when a person needs an apartment, he needs it now--not a year from now.

U.S. Adviser Speaks Here

'Masses Not Following Viet Cong'

By SUE FILSON

The United States is in Viet Nam to save all of Southeast Asia from communism, a U.S. adviser to the Vietnamese police force said here Thursday.

Jack E. Ryan, chief of the Public Safety Division of the U.S. Operations Mission in Viet Nam, said the Communist Viet Cong have "no mass following" among the people in the countryside.

Ryan formerly worked with the MSU advisory mission which pulled out of Viet Nam in 1961 after several professors wrote articles severely criticizing the government of the late Ngo Dinh Diem. Diem was irked when the University refused to stop professors from writing critical articles.

Ryan said U.S. officials in Viet Nam do not disapprove of "teach-ins" against government policy which were held on college cam-

pus throughout the nation last spring.

"This is free discussion, and it's a part of the American democratic process. We thoroughly approve of teach-ins as long as they are truly forums and present both sides of the issue. We don't approve of teach-ins which are one-sided."

Ryan said he hoped that military executions for terrorists would discourage non-Communist civilians from cooperating with the Viet Cong. South Viet Nam's new military government recently announced a policy of mass executions for captured terrorists and Viet Cong soldiers.

However, Ryan said he does not think the get-tough policy will have much effect on hard-core Viet Cong terrorists.

"I do think this policy may enable civilians who aren't members of the Viet Cong to resist pressure to cooperate in terrorist activities. When a man knows he'll be shot if he's captured, he's more likely to resist this pressure."

Approximately 586 government officials in Vietnamese provinces were killed or kidnapped during the first four months of 1965, Ryan said. It is expected that 200 civilian police will be killed by terrorists this year.

"The Viet Cong pays special attention to terrorizing police and provincial officials, because they are essential to order and a stable government."

MSU was largely responsible for the development of the Vietnamese police force after the French left in 1954.

In addition to providing aid to the civilian police, Ryan's office is also responsible for a system of 12,000 radios in Vietnamese villages supported by the U.S.

The villages use the radios to call Saigon for help if they are being attacked by the Viet Cong.

MSU's Viet Mission Criticized In Book

In 1955, Michigan State undertook a technical advisory mission to the government of South Viet Nam which cost the U.S. government more than \$25 million over a seven-year period.

The MSU assistance was concentrated in the areas of police and public administration. Robert Scigliano and Guy H. Fox, professors of political science, have analyzed the effects of the MSU mission in a new book "Technical Assistance in Viet Nam: The Michigan State University Experience."

Fox and Scigliano state that "no other university has sent so many varied and extensive tasks."

They emphasize that MSU is the only university in the country which "substituted its resources for entire segments of the American economic aid mission abroad."

The authors cite five main weaknesses in the MSU advisory mission.

- The intimate relationship which the University group in Saigon enjoyed with the Vietnamese leadership was a source of considerable strain between MSU and both American and Vietnamese officials.
- MSU failed to enunciate clear goals in its technical aid, with the result that the American embassy and economic aid mission were able to impose their goals and priorities on the University.
- The University strayed too far from an educational role, getting itself involved in such unsuitable activities as ordering weapons and equipment for the Vietnamese police and security services and teaching them how to use the weapons.
- Most of the personnel the University sent to Viet Nam did not come from the MSU campus and were not, in fact, academic personnel at all.
- The specific campus impact of the Vietnam project was small. Few of the academic personnel who went to Viet Nam returned to the MSU faculty. Probably no new courses were added as a consequence of the project, few students have undertaken graduate study in this area, and the library collection on Vietnam hardly reflects the lengthy involvement of the University in the affairs of that country.

The book was published last week by Frederick A. Praeger.

The Long Hot Summer Of 1965--With No Politics

By DAVE HANSON

Last summer the conventions and campaigns on the national, state and local level made every city in the country a hotbed of discussion and controversy.

This summer the political conventions have been replaced on television by reruns of the shows we didn't like all year.

Barry versus Lyndon has given way to Dr. Kildare versus Perry Mason in the summer Nielsen.

A year ago we heard of the tragic slaying of three civil rights workers in Mississippi. Hopefully the news from the south this year will be no more dramatic than that of the constructive STEP project involving Michigan State students.

The quiet summer of 1965 will be brightened on July 14 when the Mariner rocket now heading toward Mars reaches its destination and sends pictures back to Earth.

A week-long space adventure is planned in August on the heels of the successful trip of astronauts McDivitt and white earlier this month.

The news from Viet Nam and the Dominican Republic falls into a pattern of sameness in this summer when nobody is talking

about the issues or running for anything.

The Michigan legislature adjourned Friday for five weeks. They will return to the capitol and to business in August.

All around the country officials take vacations and trust that nothing will happen. There is a mutual understanding that summer is not the time for crisis.

After a spring of demonstrations for Viet Nam, open housing, Luxembourg and student rights, the summer of 1965 in East Lansing could be quiet. There are 56 demonstrators facing charges growing out of one demonstration. The East Lansing city council could move forward in passing an open housing ordinance or the whole thing could die in the aftermath of pending court decisions.

Many things could happen. Many more things will be short-lived and uneventful because it's summer, the time for the Impool and not for a protest or a demonstration.

Perhaps the summer of 1965 will be remembered as the summer that the Yankees lost the pennant. Somewhere down in sixth or seventh place, the Bronx

But, Seriously. . .

MICHIGAN STATE UNIVERSITY STATE NEWS

Member Associated Press, United Press International, Inland Daily Press Association, Associated College Press, Michigan Press Association.

Published every class day throughout fall, winter and spring terms and twice weekly summer term by the students of Michigan State University.

Second class postage paid at East Lansing, Michigan.

Editorial and business offices at 44 Student Services Building, Michigan State University, East Lansing, Michigan.

<p>EDITORIAL 355-8252</p> <p>Editor-in-Chief Charles C. Wells</p> <p>Managing Editor Richard Schwartz</p> <p>Sports Editor Larry Mogg</p> <p>Editorial Page Editor Susan J. Filson</p> <p>Entertainment Editor Faye E. Unger</p> <p>Advisor Louis J. Berman</p>	<p>ADVERTISING 355-8255</p> <p>Manager Arthur Langer</p> <p>Asst. Manager Dick Taylor</p> <p>Classifieds Barbara Judy</p> <p>Advisor Robert Bullard</p>
---	---

ASMSU

(continued from page 1)

the use of "certified" or "un-certified" for housing.

"These terms would mean something like 'recommended' or 'not recommended,'" Friberg said.

He anticipates pressure on the MSU Commission from ultra-conservative factions who might oppose any positive action and from the "group that was arrested."

Featuring

- Hot Pizza
- Foot Longs
- Submarines

FOR DELIVERY CALL

ED 2-0863

203 M.A.C.

THE PIZZA PIT

Red Cedar Reviewed

By DON SOCKOL

that this is why ship building has lagged behind the national average here, and why many fisher folk have avoided East Lansing recently and chosen other parts of the country to live.

The committee conservatively estimates that the establishment of a port in East Lansing would bring about 500 million dollars in additional trade to the community.

The committee concludes its report with an ambitious and inspiring suggestion. It recommends the building of a canal between the Red Cedar River and the Pacific Ocean.

The only possible objection to

O. Rhee Lee, professor of engineering, estimates that a canal on the lines of the one proposed would cost, more or less, 32 trillion dollars.

I would think, that could this money be raised, it would be a worthy enterprise for student government to look into in the fall. Here is a chance for it to refute skeptics who call student government a "do-nothing" organization.

The new ASMSU could not have been given a better opportunity to prove itself.

Better Hurry!

If you are going to attend only the first 5 week summer session, NOW is the time to buy your study guides

- Cliffs Notes
- Monarch Series
- Study Masters
- Many Others

Your One-Stop Shopping Center For All Your Summer School Needs & Supplies

COMPLETE SCIENTIFIC INSPECTION

for American-Foreign-Compacts featuring

- Wheel balancing
- Custom brake service
- Steering correction

We also do expert tuneup work on American and Compact cars

LISKEY'S AUTO SAFETY CENTER

124 So. Larch off Mich. Ave. - Lansing

Write Muskegon Area Development Council on Activities and Accommodations

JUST FOR THE FUN OF IT!

GREATER MUSKEGON'S SEAWAY Festival

JULY 3 thru JULY 10

8 EXCITING DAYS of FAMILY FUN On Beautiful Lake Michigan 7 Miles of Beach

- SPORTS, CULTURE, ENTERTAINMENT
- ALL-AMERICAN MUSIC FESTIVAL
- MIDWESTERN SQUARE DANCE
- FIREWORKS! GIGANTIC AIR SHOW
- RIDES and MIDWAY - BOAT RACES
- SPECTACULAR PARADE

plus - A WEEK LONG SCHEDULE OF FREE EVENTS MORE FUN - MORE TO SEE - MORE TO DO IN 8 DAYS THAN YOU EVER THOUGHT POSSIBLE

JULY 3 thru JULY 10

Letter Policy

The State News welcomes all letters to the editor from any members of the MSU community or non-University readers.

Letters should be no longer than 300 words and typed double-spaced if possible. Longer letters may be considered for publication as "Point of View" columns. Correspondents should include name and, if applicable, University standing.

RENT your T.V. From NEJAC

Zenith & G.E. Portables
FREE Service & Delivery

\$9 per month

NEJAC T.V. Rentals Phone: 482-0624

GOLFERS!

Revitalized SHAG BALLS \$2.40 doz.

Plastic PRACTICE BALLS 20¢ ea. or 6 for \$1.00

TENNIS RACQUETS from \$6.95

FREE USGA 1965 Golf Rule Book with purchase of \$1.00 or more.

LARRY CUSHION SPORTING GOODS

3020 Vine St. - 1 blk. N. of Mich. Ave. - West of Sears
Open Mon. & Fri. Nights Till 9 IV-57465

Art & Engineering Supplies

Full Selection of Required Paperbacks

We Still Have Many Used Books Left

Student Book Store

Free Parking In Large Lot At Rear

Across From Berkey

We Can Help Save You Up To \$300.00 . . . Or More On The Purchase Of A 1965 Automobile!

LET US HELP YOU WITH YOUR NEW OR USED CAR SHOPPING!

- 1st. Use your Credit Union loan service. It takes only a few minutes to arrange complete financing BEFORE you see a dealer.
- 2nd. See at least three different dealers. Get the BEST Price!
- 3rd. Discuss ONLY the cash price with the dealer . . . FIRST, then get details on value of your trade-in, remember . . . it's the cash difference you pay that counts.

So Always Get The CASH Price FIRST!

Then Phone . . . 355-0293

Michigan State University Employees' **CREDIT UNION**

Manly Miles Bldg. Harrison Road

Two Seniors Study Prison Functions Visit Jackson Facilities As Class Field Assignment



INSIDE STORY: Terry Weston, Deckerville senior, and William Bildner, Kalamazoo senior, talk with Southern Michigan Prison inmates in the shadow of No. 1 gun post during their social work field assignment at Jackson.
Photo by Bill Dye of the SMP Spectator

Working with men sentenced to prison is a definite asset to academic studies, two MSU social work seniors discovered. William Bildner, Kalamazoo, and Terry Weston, Deckerville, spent two days a week for six weeks in Correction Department facilities at Jackson as a MSU social work department field assignment.

Bildner worked in the Reception-Diagnostic Center (RDC) and Weston was assigned to Southern Michigan Prison (SMP) Treatment Department.

Although physically a part of the prison at Jackson, the RDC is a separate institution. Here, all men receiving felony sentences in Michigan are received for testing and case evaluations.

Bildner worked closely with the RDC staff and observed their procedures.

Each new RDC arrival is subjected to a battery of intelligence and psychological tests; he receives a thorough physical examination and he is interviewed extensively by psychologists, vocational counselors and social workers.

The results of their findings are evaluated and a recommendation is made as to the best Corrections Department facility for each man.

"I was pleased to note that it was not a cut-and-dried proposition. The inmate had an opportunity to discuss staff suggestions and if he didn't agree with them staff members discussed their opinions pro and con," Bildner said.

Bildner had the opportunity to observe all phases of the RDC operation. He sat in on counselor's and psychologist's interviews, indoctrination and group therapy sessions and disciplinary court—where inmates are "tried" for RDC rule infractions.

"All through the assignment," Bildner added, "I was never treated like a greenhorn. Many times my opinion was requested,

EDITOR'S NOTE: This story was written for the State News by HUGH DILLON, #91494, an inmate at Southern Michigan Prison in Jackson and editor of the prison paper, The Spectator.

always carefully considered and many times a suggestion was followed. I had the feeling of being a part of it and not just a visitor."

Bildner and Weston had the opportunity to "almost" know what it is like to be a prisoner. They were free to associate and converse with inmates on many areas other than their assigned duties.

"Talking with inmates 'off the record,' afforded me the opportunity to gain insights that will no doubt prove invaluable in later work," Weston said.

Weston was assigned to work with B.C. Toland, SMP inmate's counselor. Weston's field assignment came just prior to a reorganization of the SMP counseling system.

Counselors formerly had caseloads of several hundred men. Now five associate counselors have taken over most of the routine duties, affording counselors

more time to work intensively with men on their caseloads.

"The new system," Weston commented, "appears to be a definite improvement. Before, the counselors just didn't have as much time as they would have liked to have had to work with an inmate and his problems."

In his work with Toland, Weston studied histories of a wide variety of criminal cases. After studying a case history, Weston would meet the man during a counselor's interview.

"This opportunity could never be duplicated in the classroom. That's why these field assignments, I feel, are tremendously important."

Bildner and Weston reported their experiences, observations and opinions each week to their MSU social work class.

Both graduating seniors plan to enter corrections work. Bildner in Michigan and Weston in California.

The Yellow Rolls-Royce

Trilogy Has Big Cast And Car With History

By DAVE HANSON
State News Reviewer

The Yellow Rolls-Royce is a 1930 Phantom with a "revolutionary engine," an unusual paint job and an inspiring back seat with telephone, bar and window shades.

The Yellow Rolls-Royce is also the name of the movie currently playing at the Campus Theater and it boasts an all-star cast, script by Terrence Rattigan, Panavision and MetroColor plus the car with a history of lost loves.

Overwhelmingly beautiful, the photography is at times almost too rich for the three shallow stories held together by the yellow Phantom. The exterior shots of England and Italy make big films at time more of a travelogue than a drama.

Unfortunately, the characters lack freshness and the cast seems to have been chosen on the basis of how many times they have played the same role before.

Rex Harrison plays Rex Harrison in the first story, set in upper-upper English society of about 1930. The aloof British official he overacts during the climax when he finds his wife necking with his gigolo assistant in, you guessed it, the yellow Rolls-Royce.

Jeanne Moreau is a bit stiff speaking English but, like the film, she is so beautiful you can forgive the minor flaw.

Shirley MacLaine steals a show that needs to be stolen as the gun-moll of George C. Scott in the second story. It's hardly a new role for her but she handles the transition from the gum-popping dumb broad to a woman who has to give up her lover so that everyone can go on living, if not happily ever after.

George C. Scott and Art Carney, as his henchman, are saved from being wasted by a few good lines and the fact that they play their stereotyped roles to the hilt for just the right effect. What really counts is the story about Shirley MacLaine and her lover Alain Delon, who plays an Italian gigolo providing the female tourists with photographs and favors for tips. As an actor speaking

English, Delon has beautiful blue eyes.

Another 20,000 miles find the Rolls-Royce in Trieste in 1941. Ingrid Bergman is too much actress for her role as the widow of an American industrialist who won't believe the bombs are falling, because the Germans personally assured her that they had no territorial ambitions.

She is best when she takes off into the Yugoslavian mountains to aid guerilla fighter Omar Sharif. Unfortunately, her trip to the mountains is brief and after the inevitable night in the back seat she must return to America.

The film has three strikes against it to begin with. First it is a spectacular. That usually means that the scenery is better than the acting. Second it is a trilogy. That is another way of saying that three bad stories might make one good one. Third it has too much talent. The names look good on the billboards but it is unusual for anyone to stand out.

Lifesaving Courses Free

Free lifesaving courses are being offered this summer at MSU by the Ingham-Eaton Chapter of the American Red Cross. Both Junior lifesaving, for ages 12-15, and senior lifesaving, for ages 16 and over, are being offered. A Red Cross Swimmers card or the equivalent must be held to take the course.

A course for Water Safety Aide will also be offered at the same time as the lifesaving courses. To be eligible, one must be 14-17 years old and hold either a junior or senior lifesaving certificate.

The course began Monday, June 28 at 9 a.m. at the Women's Intramural Building.

For further information and registration call the American Red Cross Chapter office, IV 4-7461.

STUDENT SPECIALS

FOR TUESDAY, JUNE 29

NOON ENTREE:
Ham & Escalloped Potatoes
With Lima Beans **90¢**

DINNER ENTREE:
Pork Bird & Mashed Potatoes
With Green Beans **1.25**



UNION
CAFETERIA

CORNER OF
ABDOR ROAD
& GRAND RIVER

HOURS: 11:15 a.m.-1:15 p.m. and 5 to 7 p.m.

Knapp's



do you know about
Knapp's
free classes
in baby care?

new summer series starts
July 1 till August 12. Fall
series resumes after Labor
Day. Class, Thursday at 2 P.M.

Start to get ready now for the new arrival, and learn to be completely at ease with the new baby. Join other expectant parents for demonstrations and practice in dressing, handling and bathing baby. Also included in this course are instructions on what to pack for the hospital, and a visit to a local maternity ward. Final 7-week series of this season, starts Thursday, at 2:00 p.m.

Knapp's Downtown
5th Floor Auditorium

East Lansing
Dial 332-8622

Knapp's



follow the sun
in seersucker by
Arthur Originals

14.98

The time-honored favorite, seersucker, in blend of Arnel® triacetate-cotton, with new zip for the trip . . . in brown, green, red or blue, for sizes 8 to 18.

A. Sleeveless suit with cowl neckline. Trim traveler that stays crisp, even in a suitcase. Mock pocket flaps add dash to the back-buttoned blouse.

B. Deep-toned shirt-styled shift is plane or train perfect, has a knack for spanning seasons right around home. Step-in front, colorful soft scarf tuck-in.

DRESSES—EAST LANSING STREET LEVEL

Shop East Lansing Tues. 9:30 to 5:30
Wednesday Noon To 9:00

GO * GO * 507

MSU has a brand new
BOOK STORE

- * Easy to reach
- * Open soon to serve your Fall needs
- * New ideas & New location & Super Bargains
- * The only complete student store
- * The shop where students go

CAMPUS BOOK STORE

507 E. Grand River

see you at the (you must be 21)

Metro Bowl featuring:
"The Emotions"
Bill, Little Joe and Mike

Thurs., Fri., Sat.

at the METRO LOUNGE Corner of Jolly Rd. & Logan St.

160 Train For Nigerian, Chilean Corps

About 160 Peace Corps trainees began 2 1/2 months of training on campus last week for service next fall in Chile and Nigeria.

This is MSU's second group of trainees for both Nigeria and Chile. The group, about evenly divided between the two countries, is composed primarily of men and women in their 20's from all parts of the United States.

John D. Donoghue, associate professor of anthropology, is director of the Chile project. Clayton H. Wells, associate director of the Office of International Extension, heads the Nigeria project.

Two grants totaling \$517,586 from the Peace Corps of Washington were recently accepted by the Board of Trustees for use on the Chile and Nigerian programs.

The larger grant, \$276,748, is to be used for an agricultural extension and rural development for Nigeria.

The Nigerian trainees will spend 10 weeks on the MSU campus followed by four weeks in the Virgin Islands while the Chilean trainees will spend their first 10 weeks at MSU followed by a training period in Mexico.

Donoghue said that the Chilean trainees are being specifically

groomed for community development work in some 40 villages throughout Chile.

The trainees will study the Spanish language and various aspects of community life in addition to the other regular subjects.

They will go out individually or in small groups to work in the community, attempt to develop community organizations,

and formulate community action projects.

The trainees will also assist in developing programs for modernization of agriculture and rural living.

Volunteers will work with the Chilean Department of the Interior, the Bureau of Indian Affairs and the Agrarian Reform Corporation.

Nigerian trainees will be assigned to various regional organizations in Nigeria to assist in developing programs for modernization of agriculture and rural living.

The trainees will observe tropical crop production and community life, and perform bridge and building construction.

The trainees, Wells said, will be under the general supervision of the Ministry of Economic Planning and Community Development in Nigeria, and they will work in the field with professionals from the Ministry of Agriculture.

While in the Virgin Islands, the trainees will observe tropical crop production and community life, and perform bridge and building construction.

The trainees, Wells said, will be under the general supervision of the Ministry of Economic Planning and Community Development in Nigeria, and they will work in the field with professionals from the Ministry of Agriculture.

Trainees Reveal 'Why'

What motivates a typical college student to join the Peace Corps?

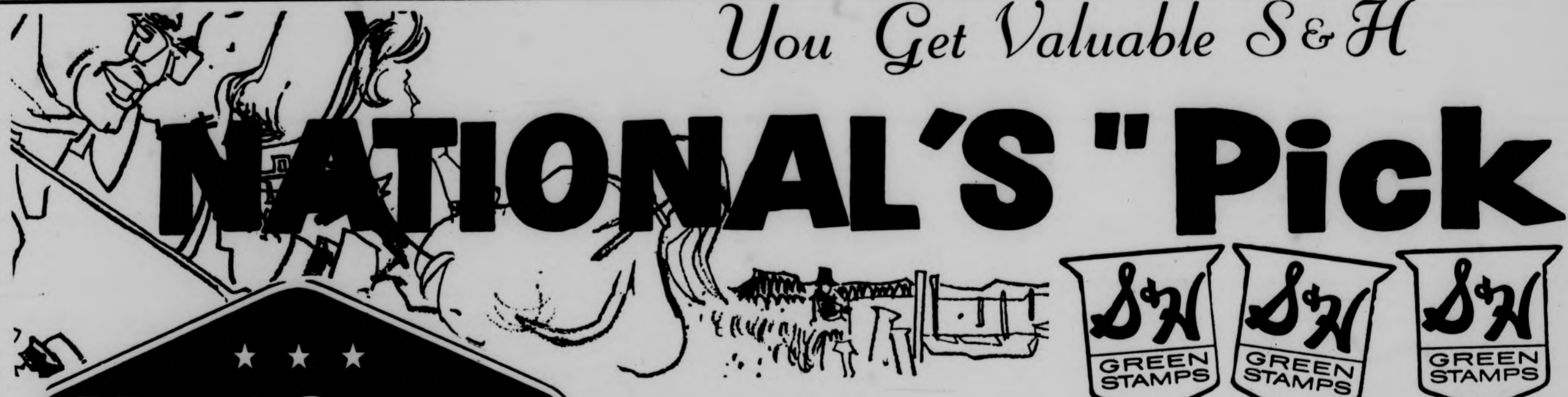
Raymond Watson, San Diego, Calif., one of the Peace Corps trainees on campus this summer, said, "I felt a need to represent America in doing something worthwhile - to concentrate on the worth of other people."

"It's a cultural exchange," he said. "We represent American society in showing what kind of people Americans really are. At the same time we get an impression of foreign peoples and their cultures."

Gil Stone, from Ft. Lauderdale, Fla., expressed a slightly different view. "America's 'Affluent Society' is stifling. There is more to do for humanity elsewhere."

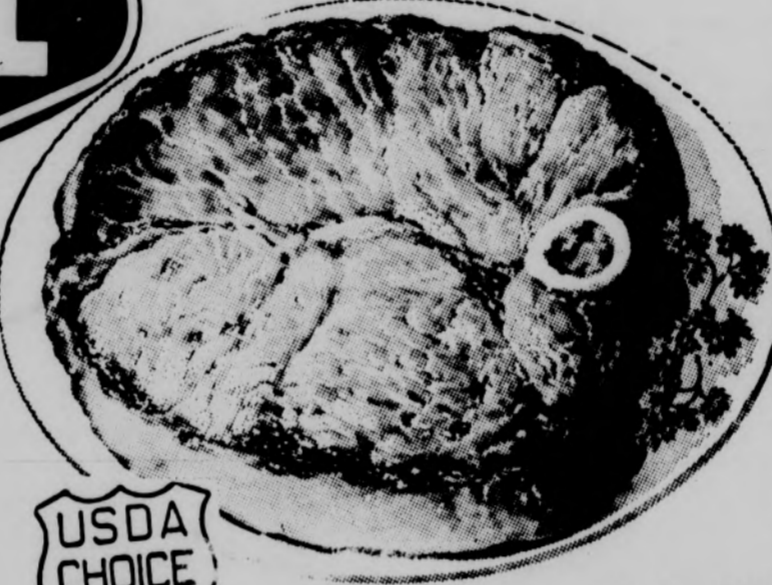
"I wanted to concentrate on the worth of people, not things," commented John Mades, a Washington State trainee. Because the Peace Corps concentrates on inter-personal relationships, he said, it is entirely non-political.

Ted Kanakos, from rural New York State, offered another aspect. "The norm group is not satisfying - I found in our culture a massive waste of time."



You Get Valuable S & H

NATIONAL'S "Pick"



U.S.D.A. Choice Beef, Value Way Trimmed
Round Steak . 85^c lb.

U.S.D.A. Choice Beef
Boneless Rump Roast 99^c lb.

U.S.D.A. Choice Beef
Boneless Cube Steak 99^c lb.

New Crop, 3-8 Lbs. Average, Gov't. Inspected
Beltsville Turkeys lb. 49^c

Delicious Flavor, Ideal for Cookouts, Petits
Bar-B-Q Fryers lb. 65^c

For Indoor or Outdoor Treats, Approx. 1 1/4-lbs.
Cornish Game Hens . . . lb. 69^c

Jiffy, All-beef
Burger Patties 3 Lb. Box \$1.99

All Meat, Skinless, Mich. Grade 1
Armour's Franks 1-Lb. Pkg. 59^c

Four Favorite Varieties, Luncheon Meats
Eckrich Smorgas Pack . 1-Lb. Pkg. 89^c

So Fresh Brand, Boneless Fillets
Frozen Ocean Perch . . . lb. 49^c

At National Buy Only
Your Favorite Fryer Parts!
All Fryer Parts Are Hand-Cut at National and back portions are carefully removed.

With Ribs
Fryer Breasts . . . 69^c lb.

Kids Love 'em
Drum-Sticks 69^c lb.

Delicious Dark Meat
Fryer Thighs . . . 65^c lb.

Good to the Last Drop!

Maxwell House Coffee

1-Lb. Can, Regular or Drip Grind **59^c**

With Coupon and \$5.00 Purchase or More

NATIONAL COUPON

Maxwell House Coffee

1-lb. Can Regular or Drip Grind **59^c**

With This Coupon and \$5.00 purchase or more (excluding beer, wine and cigarettes). Redeem this coupon at National Food Stores, limit one. Expires Sat., July 3rd.

Top Taste, for Sandwiches and Casseroles

Tuna 22^c

6-oz. Can, Light, Chunk Style

WIN \$10.00

THE TOP JOB MAN IS HERE

HE'LL CALL ON MANY HOMES IN THIS AREA

Housewives with Top Job on hand (or the words Top Job written on paper)

WIN \$10 Be Ready

TOP JOB 1-Pt., 12-Oz. Bottle 69^c

EXTRA \$10 BONUS SEE US FOR DETAILS

USDA CHOICE

National's Value-Way Trimming Gives You More Meat For Your Money, With More Flavor . . . More Goodness!

GUARANTEE

We consider no sale of our "Value Way" Meats complete until the items purchased have rendered complete satisfaction.

Refund or replacement, the courtesy way, if you are not fully satisfied with your purchase in our Meat Department.

Danish, Imported Canned

Sliced Bacon 69^c

1-lb. Can, Ideal for Picnics or Campers . . . Needs No Refrigeration!

Realemon, Concentrated - Just Mix with Water

Frozen Lemonade 6-oz. Can 10^c

Top Treat, Favorite Flavors Perfectly Preserved in Glass Bottles

Soda Pop 6 12-oz. Btls. No Deposit, No Return 39^c

● Root Beer ● Cola ● Orange ● Lemon-Lime ● Strawberry ● Wild Cherry

Sizzle Brand, Long-Burning Briquets, for Your Cook-outs

Charcoal 20 lb. Bag 85^c

So Fresh Brand, Always Fresh, Crisp 'n Crunchy

Potato Chips 14-oz. Bag 49^c

Perfect for Cheeseburgers, If the Recipe Calls for Cheese, Use Chef Delight

Cheese Spread 2 lb. Loaf 49^c



Deal Pack, It's So Mild, It Floats

Ivory Soap 4 Med. Bars 39^c

Convenient, Individual Size

Ivory Personal . . . 4 Bars 29^c

The Soap of Beautiful Women

Camay Soap 2 Reg. Bars 23^c

For That Really-clean Feeling

Zest Soap 2 Bath Bars 45^c

Hard-working Soap

Lava Soap 2 Reg. Bars 27^c

Gentle Flakes for Mild Suds

Ivory Flakes 12 1/2-oz. Box 35^c

Mild Detergent for Finest Fabrics

Ivory Snow 2-lb. Box 79^c

Germicidal Pink

Dreft Detergent 1-lb., 2-oz. Box 79^c

Mild to Clothes, Mild to Hands

Ivory Liquid Detergent . 1-Pt., 6-oz. Bottle 65^c

Dishes Sparkle Without Wiping

Joy Liquid Detergent . . Quart Bottle 89^c

Top Taste . . . American or Pimento

Cheese Slices 29^c

8-oz. Pkg.

Get \$600 Undergrad Science Research

By JEAN PITCHFORD State News Science Writer

To acquaint promising undergraduates with research technique, the biochemistry, psychology, geology, chemistry and botany departments are conducting Undergraduate Research Programs this summer.

These programs, sponsored by the National Science Foundation, provide on-the-job training. Participants work directly with faculty members as apprentices full-time for ten weeks. For the summer's work, each receives \$600.

While working on the established research of a staff member, the participant develops research skills most science students never hear of until after graduation. Besides technique of handling equipment, he begins to gain experience in setting up equipment, analyzing data, preparing results for publication and perhaps designing experiments.

These departments continue the programs on a part-time basis during the academic year.

The National Science Foundation provides the students' salaries, and funds for equipment needed in research. The program is planned and coordinated by the department itself.

Erwin Benne, director of the biochemistry program, plans to supplement the student's experience in the lab with lectures in biochemistry and a field trip to Upjohn Co., manufacturers of pharmaceuticals.

The group of 14 students will become acquainted with several research projects being conducted in the department.

Participants in the psychology program, directed by A.M. Barch, will help prepare the results of their summer's work for publication. They will be listed as co-author with the professor who instituted the research.

John Beaman will work with three students in botany. Each will conduct individual research on a particular group of the Aster family. When the research is completed, each will prepare his results for publication.

The participants in William Hinze's geology institute will be doing a great deal of traveling. One will be working in California, and another here at MSU. If funds permit, a third will be studying in Alaska.

Participants in the chemistry program directed by William Reusch already have their work cut out for them. Before acceptance into the program, each outlined his intended research program, and found a professor to work with him.

The eight most promising were chosen by a faculty committee. The students may work either on individual research, or as assistants in the research of a faculty member.

Elected President

Arthur A. F. Brandstatter, director of the School of Police Administration and Public Safety, has been elected president of the International Association of Police Professors.

The past year he had served as the organization's vice president.

Mild Ivory Liquid Qt. Btl. **89^c**

Double S & H Green Stamps EVERY Wednesday

Library

Library hours and circulation policy will differ slightly during summer term. The Library will be open from 8 a.m. to 11 p.m. on weekdays. On Saturday it will open at 9 a.m. and close at 5 p.m. Sunday the hours will be 2-11 p.m. Books may only be borrowed for one week during the first five weeks of summer school. After that, books may be kept out for the ordinary two weeks.

Old IBM Cards Make 'High Quality' Scrap

Have you ever wondered what happens to all those punched cards you fill out during registration every term? Francis B. Martin, director of Data Processing, says that the cards no longer of use are resold for scrap. "Last year," he said, "we used 25 million punched cards." "Some of the cards are microfilmed," says Martin, "and others are kept for department records. But because the cards are made of high quality paper, we are able to sell them for scrap." There are 42 different kinds of cards used for registration. They are fed through the various sorters and calculators in the data processing center in the basement of Wells Hall. A staff of 40 works with the IBM 1401 system and other equip-

ment, which is rented for about \$20,000 a month. The Data Processing Department was established in 1937. It was then called the Tabulating Department and its first function was to handle the MSU payroll. The first punched card registration was held in the spring of 1939. "Since then," says Martin, "growth has been the result of normal student and faculty growth. We have gone through refinement and expansion of existing procedures and programs, and have introduced new areas and applications." In 1938 several test scoring machines were installed. Several years later these were transferred to the University College

where they are now administered through the Evaluation Services Department. The MSU Computer Laboratory was established in the spring of 1956 as an educational and research center in the areas of numerical analysis, programming, computer application and electronic circuitry. The first production was run of MISTIC (Michigan State Integral Computer) in 1956. Outside of research in the various programming, which accounts for 80 per cent of the computer usage, projects have ranged from statistical and numerical analysis to design of the MSU 2 1/2 million volt cyclotron.

Firemen To Work 56 Hours

East Lansing firemen will go on a long awaited 56-hour work week, starting Thursday. The firemen's present work week is 63 hours. The reduction in working hours will call for the hiring of seven new men to make up a third shift. Each shift will work 24 hours and then be off for 48 hours. The present system consists of two shifts, each working in alternate 24 hours shifts. The seven new men will receive 15 or more hours training in first aid and in the use and maintenance of all the equipment. There is more to a fireman's job than sitting around the station playing checkers or cards. The firemen must clean and polish the fire trucks and equipment, clean and wax the floors of the station, wash the officers' cars, polish the poles and wash the station house windows, as well as fight fires. For entertainment during the lax hours at the station the firemen play cards, watch TV, listen to the radio and play ping pong. Each man at the station takes his turn in planning and preparing the meals for a day.

Police

(continued from page 1) enforcers that a controlled demonstration can be the source of a potential riot. "Demonstrators have an obligation to abide by the law and to inform the police department that they want to demonstrate," Mrs. Beasley added. She also remarked, however, that "our involvement with police departments has been whether or not the police officers themselves respect the law and stay within the regulations of their own department." Only 34 out of 100 citizen complaints against the Detroit Police Department have been dismissed, cited Hanna. Twelve were resolved through conciliation and the rest are now court cases. Radelet said he was opposed to the citizen review board procedure that is in demand in communities where there is police abuse. "Rising questions about the issue of such an independent agency under the Michigan constitution. The issue of the plenary power given to the civil rights commission hasn't even been resolved. I question any review board power except to make recommendations regarding issues with racial overtones." Radelet offered five checkpoints for police departments in the area of complaint procedures: --Does adequate machinery exist for processing citizen complaints against police? "Adequate implies justice, impartiality, fairness--everything we can do to avoid grounds for charges of 'white-wash,'" he said. --All complaints should be appropriately investigated. "No complaint should be regarded as a 'crackpot complaint' and ignored," he said. --Is there "appropriate" feedback? "I don't mean giving the newspapers complete access to the case, but the citizen is entitled to some report as to the results of the investigation," he added. --"In a brick-by-brick building process, create a reputation of integrity in the community so that all segments come to trust the department," he concluded.

Econ In Israel

Abba Lerner, professor of economics here, will help to establish economics and social science curricula at the University of Tel-Aviv in Israel. On leave from MSU for one year, Lerner will be dean of the School of Social Science and chairman of the Department of Economics at Tel-Aviv. He will begin the Tel-Aviv task after he completes a summer teaching assignment at the University of Hawaii.

MASA President

Albert C. Johnson, superintendent of the Benton Harbor schools, has been chosen president-elect of the Michigan Association of School Administrators (MASA).

Promenaders

There will be a meeting of Promenaders, round, folk and square dancing club, 7-9 p.m. Wednesday in 34 Women's IM.

Green Stamps at National!

-a-Picnic Sale



Hickory Smoked, Fully Cooked Ham **49¢** lb. Generous Shank Portion

Whole, Shank Half, Butt Portion Cooked Ham **59¢** lb. Butt Half Cooked Ham **65¢** lb.

Marhoefer, Fully Cooked Canned Ham **96¢** Lb. Ham



We reserve the right to limit quantities. Prices effective thru Sat., July 3.



Select, Center Cut Ham Steak **99¢** lb.

Freshly Sliced, Tender 'n Juicy Boiled Ham **99¢** lb.

New Low Prices!

Gerber's Strained Vegetable Varieties Baby Foods **3 4 1/2-oz. Jars 25¢**

Kraft's Famous Salad Dressing Miracle Whip **Quart Jar 49¢**

Dawn Dew Fresh Fruits & Vegetables... Freshest of the Fresh!

Fancy Salad Fixin's, Crisp 'n Crunchy Fresh Leaf Lettuce **29¢** lb.

Extra Salad Flavor, Tender 'n Crisp Fresh Bib Lettuce **39¢** lb.

Garnish Your Steak, Flavorful and Nutritious Fresh Mushrooms **49¢** lb.

Vine-ripened, Juicy 'n Flavorful, Firm Fresh Cherry Tomatoes **39¢** pint

Now Is The Time to Use It Michigan Peat **50¢** Lb. **59¢** Bag

10-6-4 Formula, Covers 5,000 Sq. Ft. Green Up Plant Food **50¢** Lb. **\$1.99** Bag

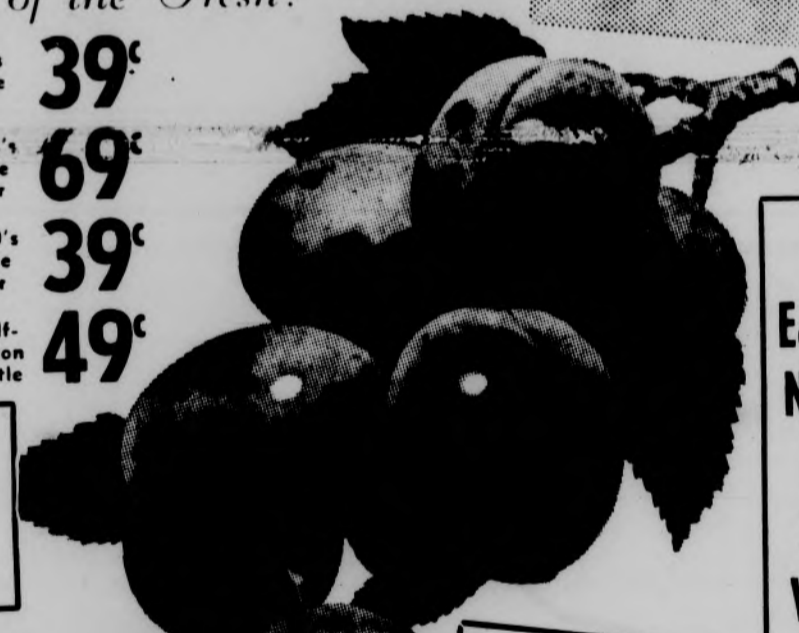
Fresh from Hawaii, Royal Hawaiian Brand 7's Size **39¢**

Washington, Fresh, Crisp, 12 1/2's Size For **69¢**

Golden Ripe and Full of Juice Fresh Lemons **6** 140's Size for **39¢**

Tropicana Fruit Punch, or Low-Calorie Orange Tropic-Cal-Lo Orange **49¢** Half-Gallon Bottle

Ripe Sweet 'n Juicy Fresh Apricots **29¢** lb. Treat the kids to a refreshing afternoon snack!



Plump, Ripe 'n Juicy Fresh Plums **19¢** lb.

Serve Refreshing Summer Salads with Creamy-Rich Lockshore Nordica Cottage Cheese **19¢** 15-Oz. Ctn.

Banquet—Apple, Cherry or Peach. Just Heat 'n Serve Frozen Fruit Pies **25¢** 1-lb. 4-oz. Pie

Colorful for your fruit bowl... delicious in fresh plum pie!

Shop Early... National Food Stores Will Be Closed Monday, July 5



NATIONAL COUPON
FREE WITH THIS COUPON
50 EXTRA S & H GREEN STAMPS
With purchase of \$2.00 or more FRESH FRUITS & VEGETABLES
Redeem this coupon at National Food Stores. Coupon Expires Saturday, July 3rd

NATIONAL COUPON
FREE WITH THIS COUPON
50 EXTRA S & H GREEN STAMPS
With purchase of any BAG OF FERTILIZER
Redeem this coupon at National Food Stores. Coupon Expires Saturday, July 3rd

NATIONAL COUPON
FREE WITH THIS COUPON
50 EXTRA S & H GREEN STAMPS
With purchase of a Pkg. of 5 WILKINSON STAINLESS BLADES
Redeem this coupon at National Food Stores. Coupon Expires Saturday, July 3rd

Deliciously Different Ginger Ale Vernors **3 1-Pt., 8-Oz. Bottles 59¢**

Deal Pack, Effective Liquid Thrill Liquid Detergent **52¢** 1-Pt., 6-oz. Bottle

It's New, Effective, Dry Star Dust Bleach **79¢** 1-lb., 11-oz. Box

All Refreshing Flavors Mavis Pop **49¢** 6 12-oz. cans

Deal Pack, Delicious 'n Refreshing Hills Instant Coffee **84¢** 6-oz. Jar

All Varieties, for Perfect Cakes Swansdown Cake Mix **\$1.00** 1-lb., 3-oz. Boxes

Pink or White, Regular Bars Sweetheart Soap **33¢** Mixed Pack

Pink or White, Bath Bars Sweetheart Soap **49¢** Mixed Pack

Rich, Delicious Coffee Chock Full O' Nuts **95¢** 1-lb. Can

Nabisco, Fresh-Frozen Black Bottom Pie **89¢** 1-lb., 4 1/2-oz. size

Nabisco, Fresh-Frozen Strawberry Cream Pie **89¢** 1-lb., 1 1/2-oz. Pie

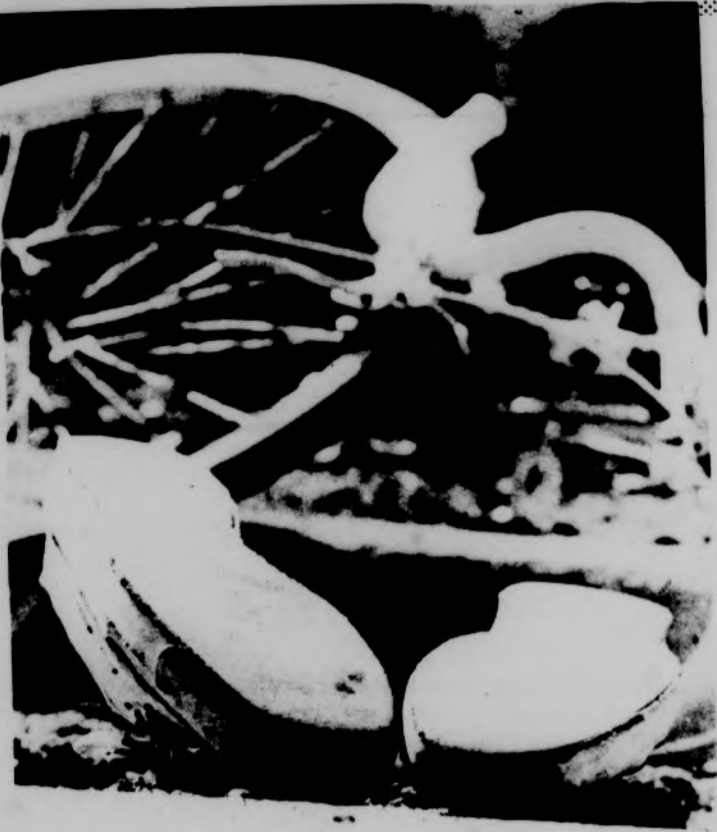
Fewer Cavities With Crest Toothpaste **63¢** 5-Oz. Extra Large Tube

Deal Pack, Oral Antiseptic Listerine **98¢** 1-Pt., 4-oz. Bottle

For Luxurious Hair Care Halo Shampoo **77¢** 11 1/2-oz. Bottle

Hold Your Hair in Place Aqua Net Spray **78¢** 13-oz. Can

Double S & H Green Stamps EVERY Wednesday



Roads Groan Under Bus Loads

Heavy bus traffic creates problems for MSU road crews. According to Ralph Sweinberger, principal landscape engineer, the streets simply were not designed for such heavy vehicles and Michigan winters.

But since the buses and the winters are here to stay, road repair crews perform an important service for the University. New roads connecting Fee and Akers residence halls with the campus require special attention.

Repairs on new roads are expected during the first year, but Wilson Road has shown fewer signs of wear than anticipated. It will be repaired and resurfaced this summer.

During the summer months when traffic is lighter, MSU Physical Plant places high priority on street repairs. They expect to have campus streets in top condition for fall by the end of August. In addition to routine repairs,



the Physical Plant plans to widen Farm Lane from the Grand Trunk Railroad tracks to Mt. Hope. At the same time they will construct a public sidewalk from the commuter parking lot to campus. These projects are also scheduled for completion before

the beginning of fall term. According to Sweinberger, traffic is moving smoothly on campus this year. The new traffic circles are partly responsible. They keep traffic moving without necessitating additional traffic lights.

'Practical' Lizzie Portrayed

Barbara Rutledge, who plays opposite her husband in "The Rainmaker" opening Wednesday in Demonstration Hall, has played the role of plain farm girl Lizzie in her own life.

"Like Lizzie, whom I portray, I made it by my brains and solid sense, never realizing the truth of the saying that being beautiful is thinking beautiful," Mrs. Rutledge, assistant instructor in humanities, said.

Her feeling for Lizzie led Mrs. Rutledge to play the part as an undergraduate in an acting class at Ohio State opposite her future husband, Frank Rutledge, now director of productions at Michigan State.

When the lights dim at 8:30 p.m. Wednesday in Demonstration Hall, she will again step on stage as a girl convinced she is to be an old maid, and her husband will again portray Bill Starbuck, the "rainmaker" who teaches her to believe in herself.

Lizzie, of "The Rainmaker," believes it is wisest to be practical, and that includes being practical about the undeniable fact she is plain and will never marry despite her family's efforts to find her a husband.

The hocus-pocus of flamboyant Bill Starbuck, the con-man who promises to bring rain to her

family's drought-ridden farm for \$1000. Starbuck, however, turns his fast-talking to convincing her that her dreams have power, that if she believes she is pretty, she can catch her man.

Tickets at \$2 apiece are available from the Demonstration Hall ticket office, 355-0148.

Mrs. Rutledge has always interpreted Lizzie through her own experience, she said. Under the

direction of John Baldwin, professor of speech, however, she said she has come to realize she made the role too tragic.

Mrs. Rutledge has either acted or choreographed a show for summer circle each season since it started five seasons ago. The Rutledges married in 1958. In 1959 they came to Michigan state when Rutledge took on the job of technical director for University Theater. Mrs. Rutledge

took a masters degree in comparative literature in 1963. They have a four-year-old daughter.

Other members of the cast of "The Rainmaker" include residents of the Lansing area, a student and other faculty members.

William Montgomery, a deputy

sheriff from Lansing, portrays H.C. Curry, Lizzie's father.

Deake Pipes, assistant professor of humanities, plays the older brother and Tom Kearns, St. Claire Shores senior, the younger brother.

Charles Cassel, of WMSB, portrays the sheriff.

MSU JUDO CLUB	MSU KARATE CLUB
Tues. & Thurs. 7:00 to 8:30 third floor Jenison Field House	Wednesdays at 7:30 third floor Jenison Field House

MEETING

Summer Circle Theater
Wed.-Sat. At Demonstration Hall

THE RAINMAKER

Admission \$2.00 **Student Time**
For Reservations Call 355-0148
Mon.-Tues. 2-6 p.m. Wed.-Sat. 2-9 p.m.

REST DRIVE-IN THEATRE
EAST LANSING ON MUSIC

ENDS TONIGHT
Walt Disney's
THOSE CALLOWAYS
Plus **WORLD OF ABBOTT AND COSTELLO**

STARTS WED. FOR 7 BIG DAYS

The most delightful entertainment of your life!

WALT DISNEY'S

MOMMY

Starring **JULIE ANDREWS · DICK VAN DYKE**
TECHNICOLOR®

Program Info. 332-6944

COOL Air Conditioned CAMPUS THEATRE

Feature Presented 1:00-3:10-5:20-7:35-9:50

THE SCREEN'S MOST EXCITING CAST... IN THE YEAR'S MOST MAGNIFICENT MOVIE!

METRO-GOLDWYN-MAYER presents AN ANATOLE DE GRUNWALD PRODUCTION

**INGRID BERGMAN · REX HARRISON
ALAIN DELON · GEORGE C. SCOTT
JEANNE MOREAU · OMAR SHARIF
AND SHIRLEY MACLAINE**

**EVERYTHING HAPPENS IN...
The Yellow Rolls-Royce**

with **ART CARNEY · WALLY COX · JOYCE GREENFELL · MORIA LISTER · EDMUND PURDOM** in **Paranoid** and **MetrolCOLOR**

Plus Cartoon "The Cat That Hated People"

Next **Glenn Ford-Geraldine Page in DEAR HEART**
Att. Plus The "Battle of the Villa Florida"

Coupon

FAIRWAY GOLF RANGE

FREE Round MINIATURE GOLF

One FREE round of miniature golf with one paid admission and this coupon.

5 Minutes East On Grand River ED 28745

Coupon

COOL Air Conditioned STATE THEATRE

Program Information 332-5817

TODAY... Last Times:

PETER SELLERS

the Battle of the Sexes

8:45 P.M. only

RATTLE of a SIMPLE man

AN AMUSING COMEDY!

CREATED BY CORBETT

7:05 p.m. Once Later

WEDNESDAY:

IT'S DELIGHTFUL... IT'S DELICIOUS... IT'S DELIRIOUS... AND YOU DON'T HAVE TO BE ITALIAN TO ENJOY IT!

"LOVE, THE ITALIAN WAY"

ELKE SOMMER

WALTER CHIARI · SYLVIA KOSCINA
UGO TOGNAZZI · GABRIELE FERZETTI

Feature 7:30, 9:30 P.M., Sat. 1:40, 3:35, 5:30, 7:35, 9:35 P.M.

A TRANS LUX Release

NOTICE:
With the Last Performance On Saturday July 3rd, This Theatre Will Close For The Summer. See You In The Fall. Thanks For Your Patronage.
--Warren Wardwell, Mgr.

Service
BARBI MEL, professional typist. No job too large or too small. Block off campus. 332-3255. C
TYPING, TERM papers and theses. Electric typewriter. Fast service. Call 332-4597. 3

Transportation
RIDERS WANTED to Green Bay, Wisconsin, for 4th of July weekend. Can go via Chicago or Upper Peninsula. Leaving Friday. Call 337-1867. 3

Wanted
BLOOD DONORS needed, \$5 for RH positive; \$7 for RH negative. DETROIT BLOOD SERVICE, INC., 1427 E. Michigan Ave. Hours 9-4, Monday, Tuesday, Wednesday, Friday, 12-7 Thursday. 489-7587. 19

MSU International Film Series presents

SLAVE GIRL WHO BECAME A RICH MAN'S BRIDE!

THE GOOD EARTH

Paul Robeson
MUNI-RAINER

with **WALTER CONNOLLY · LOSCH Charley Grapewin · Jessie Ralph**

Based upon the Novel by Pearl S. Buck - Adapted for the Stage by Owen Davis and Donald Davis
Directed by Sidney Franklin

Thurs., Fri., July 1 and 2
FAIRCHILD THEATRE
- 7:30 p.m.
Admission: 50c

GLADMER THEATRE

482-0831
CONTINUOUS FROM 1 P.M. HURRY... LAST 2 DAYS
FEATURE AT 1:30-4:10 6:45-9:25 P.M.

JOSEPH E. LEVINE presents
CARROLL BAKER HARLOW

TECHNICOLOR · PARAVISION

STARTS THURSDAY
TWO CAREFREE AMERICANS TURN PARIS ON ITS EAR!

**JAMES GARNER · DICK VAN DYKE
ELKE SOMMER · ANGIE DICKINSON**

A ROSS HUNTER PRODUCTION
The ART of Love
TECHNICOLOR

ETHEL MORMAN

UNCLE JOHN'S

Now Offers You
A Complete
Line Of Meals
And Sandwiches.
When You Dine
Out... Stop In.

2820 E. Grand River
IV 7-3761
Now Open 24 Hours Daily

Program Infor. 282-3905

COOL Air Conditioned MICHIGAN THEATRE

TODAY... FROM 1:00 P.M.

1:00, 3:10, 5:15, 7:25, 9:40 P.M.

FRIDAY:
COME SEE US... and find the answer to the comedy Question of the year!

Peter Sellers
Peter O'Toole
Romy Schneider
Capucine
Paula Prentiss
Woody Allen
Ursula Andress

**FRANK SINATRA
TREVOR HOWARD
VON RYAN'S EXPRESS**

COLOR BY DE LUXE

"What's New Pussycat?"

in the
GOLF TRON TEE ROOM

OLDE FLICKS

ON E. MICH. AT CITY LIMITS

Comedy, Meller Drama, Cartoons and Sports

9:30-10:30-11:30
Every Mon., Tues. & Wed. Nite

Starlite Lansing's Largest DRIVE-IN THEATRE
2 Miles Southwest of Lansing on M-78
Call 372-3434

HELD OVER! 2ND SMASH WEEK!!

FIRST LANSING SHOWING

ADMISSION \$1.25 CHILDREN UNDER 12 FREE

ELVIS PRESLEY

as a singing, swinging wrangler on a Dude Ranch For Girls!

"TICKLE ME"

AT 8:40-12:30

HIT NO. (2) SHOWN ONCE AT 10:40

PAT BOONE In "Never Put It In Writing"

Lansing Drive-In Theatre
South Cedar at Jolly Road TU 2-2429

STARTS TOMORROW!

ADMISSION THIS ENGAGEMENT
ADULTS AND CHILDREN OVER 12 \$1.25
CHILDREN 6 YRS. THRU 11 YRS. -50c

WINNER OF 5 AWARDS
JULIE ANDREWS AS BEST ACTRESS!

WALT DISNEY'S GREATEST ACHIEVEMENT!

MOMMY

JULIE ANDREWS · DICK VAN DYKE

DAVID TOMLINSON · GLYNIS JOHNS

HERMIONE CADDLELEY · DORICE GARDNER · LANCASTER TREACHER · OWEN ED WYNN
BILL WALSH · DON DE GRADY · PETER BARRIS · BILL WALSH · ROBERT STEVENSON

CO-FEATURE
WALT DISNEY'S FLASH, teen-age OTTER
TECHNICOLOR®

JOYCE OUSTED

BENSON, HANKEY TOO

Tourney Troubles Beset Golf Trio

An invasion of the golf tournament trail by a trio of Spartans barely got off the ground last week.

Varsity golf members Ken Benson and Doug Hankey were both in dry-dock when their respective tourneys began, while MSU's Joyce Kazmierski was eliminated in the second round of the Women's National Collegiate Golf championship.

Benson, a junior, who this past season finished among the top ten in the Big Ten meet, never even made it to the first tee in the NCAA golf championship at Knoxville, Tenn. Benson, State's lone entry in the NCAA, became sick the morning before the tournament began and underwent surgery for appendicitis later that same day. Benson was reportedly coming along fine at Fort Sander Presbyterian Hospital in Knoxville.

When a field of 155 teed off at Charlevoix last week in the Michigan amateur championship, defending champ Doug Hankey wasn't among the

field. The Michigan amateur king failed to defend his title because of financial reasons. Hankey, like Benson, is a junior and will be back next season to help State's golf team.

Joyce Kazmierski breezed through the first round of the Women's Collegiate golf meet, only to run into trouble in her second round match with Roberta Albers of the University of Miami. Joyce, a 19-year-old sophomore in only her second year of tournament competition, fell behind Miss Albers on the front nine of the Gainesville, Fla., course, and a late rally was wasted, when Miss Albers birdied two of the last four holes.

Miss Kazmieski was runner-up in the same tournament last year, when it was held at Michigan State. Last year's winner, Patti Shook, a Saginaw native who attends Valparaiso University (Ind.), also fell by the wayside in a third round battle with Miss Albers, the meet's ultimate winner.

State's Own L-Shaped Room —That's The Outdoor Pool

By LARRY MOGG
State News Sports Writer

What is 165 feet long, 65 feet wide, goes splish-splash when full and draws sun-worshippers like the god Apollo did way back there in ancient Greece?

Yep, that's right, it could only be MSU's own L-shaped outdoor pool.

When temperatures soar into the 80's and 90's, MSU students swarm to the outdoor pool like a cattle drive on the loose.

More than 25,000 swimmers have used the outdoor pool since it opened back on May 15. Before the summer is through this fig-

The NEWS In
SPORTS

ure should leap past the 100,000 mark. A typical weekday will find more than 1,000 people using the acre-and-a-half plot, just south of the Men's IM. On the weekend this figure will nearly double.

The swimming depth slopes from a minimum of four feet to a maximum of six feet. The diving area is 16 feet deep.

The pool is equipped with two 1-meter boards, one 3-meter board and a platform with heights varying from 5-meters, all the way up to 10-meters (10 meters equal about 33 feet).

As everyone knows, there is also plenty of space for those who just want to sunbathe, or watch the pretty scenery.



BOMBS AWAY--A dive-bombing mission is about to be carried out by this feet-first diver.

THE TARGET--Although its probably not in their cards, these sunbathing, card-playing coeds are in for a rude awakening. Photos by James H. Hile



PhD Candidate Named Consultant

Dr. Kenton Terry Schurr, a candidate for his Ph.D. in educational psychology has been selected to serve as an educational consultant by the American Association of Dental Schools.

Kenton Terry Schurr of Bremen, Ind., is one of six interns who will spend eight weeks this summer at the School of Dentistry at Ohio State University.

The program will provide an

Sailing Anyone?

The MSU sailing club will hold its first meeting of the summer term tonight at 8 in 32 Union. All students interested in joining are invited to attend.

MSU Bookstore MSU Bookstore MSU Bookstore MSU Bookstore MSU Bookstore MSU Book

HAVEN'T YA HEARD...

We'll be Closed for Inventory
Thurs. July 1 to Fri., July 2
OPEN AGAIN
TUES., July 6



CROSS ROADS CAFE

NEW SUMMER HOURS

7:15 A.M. 4:30 P.M.

Mon. thru Fri.

MSU BOOK STORE

Located In The Center for International Programs

MSU Bookstore MSU Bookstore MSU Bookstore MSU Bookstore MSU Bookstore MSU Book

Give Your Eyes A Break This Summer! Get Prescription Sunglasses!

Bator Opticians
223 & 303 Abbott ED 2-5222

RIPUP'S Believe It or Don't!

A man, walking from San Francisco to Tokyo, will drown before he gets 100 Miles!

Anyone in Case, Will you Wonder or Married Housing, interested in Pocket Books, contemporary cards, Magazines or Fraternity Jewelry — goes to →

The Card Shop Annex
SPARTAN SHOPPING CENTER

MON. THRU FRI. 9:30 AM TO 5:30 PM. WED. NOON UNTIL 9 PM
Sat. Closed Thru Aug. 7th

Jacobson's
MEN'S SHOP
210 ABBOTT ROAD

SALE
MEN'S SHORT SLEEVE DRESS SHIRTS
3.90

Exceptional savings on cool, comfortable shirts right at the height of the hot, humid summer season. Easy-care dacron polyester and cotton blend with button-down or short spread collars . . . in white, blue, ivory or green. Lightweight cotton oxford cloth with button-down collars . . . in white; and assorted stripes on white.