

Grad Student Help Needed: Hatcher



HUDSON HAS NOTHING ON THEM... for the title of Mr. MSU are (from left) George Chesley, Kensington, junior, and Mike Salomon, Flint, senior. (Right) Bob Aldridge, Port Huron, senior.

MSU Delegates Represent 50 Nations At U.N. Confab

Approximately 100 students from other campuses are expected to attend the conference, which will be held at the campus U.N. center at 10 a.m. Friday in the Union Ballroom. Michigan State delegates at 3 a.m. Friday in the Union Ballroom. The conference will officially begin with a general assembly meeting at 7 p.m. Friday in the Union Ballroom.

World News at a Glance

From AP and UPI Wires
Russia...
Reds...
Dixie Relief...
Willie Mays Signs With Giants For \$100,000...
SAN FRANCISCO - Willie Mays joined a select circle of baseball players when he signed a contract for more than 100-thousand dollars with the San Francisco Giants Wednesday.

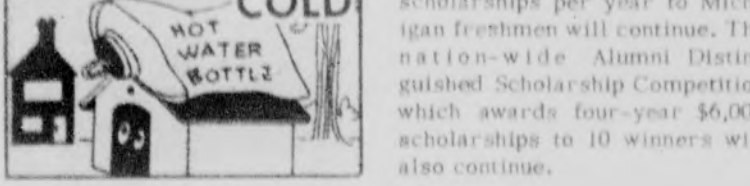
MSU Initiates Merit Awards

First Land Grant College To Offer Unique Grants

By SUE JACOBY
Of The State News
MSU, the first land-grant university in the United States, will make another contribution to public education next year by becoming the first public institution in the country to sponsor scholarships through the National Merit Corporation. Subsidies ranging from \$100 to \$1,500 per year will be offered to 18 out-of-state freshmen. They will be known as the Michigan State University Merit Scholarships.

Slate Vote For AWS Reform Bill

An amendment to the Associated Women Student's constitution which calls for complete AWS reorganization by spring, 1964, will be voted on in women's residence halls Feb. 28. The amendment would enable AWS to begin plans for structural reorganization immediately. Dean of Women Frances DeLisle said:



Sabine Outlines MSU Growth In 5 Phases

The explosion of knowledge is no longer the chief duty of a university, according to Provost Clifford E. Erickson. Erickson and Gordon A. Sabine, vice president for special projects, spoke at the ninth annual MSU Business Women's Club luncheon Wednesday in the Union Ballroom. Sabine spoke on the past, present and future development of Michigan State. Using slides to illustrate his speech, Sabine broke the development of the University into five phases. The pioneer years from 1857 to 1924, according to Sabine, were years of slow but steady growth. Growth rapidly increased, however, in the growth and planning years from 1924 to 1944, Sabine said. The post-war shock and recovery years from 1945 to 1957, were building years, according to Sabine.



JOHN WOODS

Wood Advises Future Poets To 'Read A Lot'

A distinguished Michigan poet not only became the first known poet to use the new reading room at Morrill Hall, but also the first lecturer to appear on campus under the auspices of the Cap and Gown series sponsored by Continuing Education. The two "firsts" were accomplished by John Wood, assistant professor of English at Western Michigan University, who advised aspiring poets to "read a lot and read a lot."

Experts Fight JFK Tax Cut -- For Opposite Reasons

Two former members of the Council of Economic Advisers have termed President Kennedy's tax bill as "bad economics" but for directly opposing reasons. Leon Keyserling, economic consultant in Washington, D.C., criticized the proposed bill for failing to help the little guy while University of Michigan economist, Paul W. McCracken, claimed the bill would not help the big guy. President Kennedy's proposed tax bill will not stabilize the economy, Leon Keyserling, chairman of former President Truman's Council of Economic Advisers, said Tuesday. The President's economic message was "profoundly shocking and profoundly disappointing," Keyserling said at a seminar sponsored by the department of economics and the School of Labor and Industrial Relations. "Instead of looking at the percentage of tax reduction," he said, "look at the percentage increase in disposable income. The \$3,000-a-year man would get 2 per cent more income while the \$200,000-a-year man would get a 24 per cent increase. "Too much of the national income goes to those who spend."

Face Pressures Heavy As Frosh

WASHINGTON (AP) - Concentration on growing college enrollment problems at the freshman level may cause neglect of needs at the graduate level, President Hartan Hatcher of the University of Michigan said Wednesday. Most of the education bills now before Congress are directed "toward the broad spread of education," he told a Washington-area U-M alumni group. "I agree wholeheartedly that these needs are urgent and should be met. I lament, however, that equal attention is not being given to keep the leadership universities well in the forefront of their important role," he added. "Institutions like the University of Michigan need help, and they need it immediately," Hatcher said.

MSU Man Climbing Everest

Michigan has a representative on the 19-man American team preparing to climb Mount Everest - the world's highest mountain. Maynard Miller, 42-year-old associate professor of geology at Michigan State University, is serving as chief geologist to the group attempting the first American ascent of Everest. Miller has been a member of the MSU faculty for over four years. He was given a Michigan flag to put on top of the mountain - if the team is successful. Miller was given a \$57,000 grant from the National Geographic Society for a study of the Kuluabu Glacier - which descends from Mount Everest and the other two mountains the American team intends to scale.

Pledges Support President Restricts Reporters

WASHINGTON (AP) - President Kennedy pledged full support to Venezuela Wednesday in endorsing the "all-out campaign of international cooperation" by their Cuban allies, to overthrow President Ramon Betancourt's government. Kennedy's pledge of U.S. support was announced in a communique marking the windup of Betancourt's official two-day visit to Washington. Newsmen were told today by Presidential Press Secretary Pierre Salinger that they can no longer mingle or talk with guests at official receptions given by President and Mrs. Kennedy. Reporters covering receptions may only watch the guests arrive and ask the Kennedy's to pose for pictures. If there is a formal receiving line, they may watch guests during that portion of the reception.

Heroes Duck Cold Water

Chivalry might not be dead at Michigan State, but the men aren't too enthused about getting their feet wet to save a half-dozen ducks. Judy Hoffman, Detroit junior, broke through the ice of the Red Cedar River Wednesday afternoon near the Education Building while taking a short cut. Although water was only hip deep, Miss Hoffman found herself trapped by the breaking ice, and was unable to get free of the icy water. Masculine assistance quickly came to the rescue, according to Miss Hoffman, but she finally got out of the water. They did help her up the bank. She was treated at Olin Health Center for exposure and released.

Marketing Club Holds Midwestern Conference

Marketing conference, first held in the country, is sponsored by the MSU Marketing Club.

Marketing students from 15 universities will meet at MSU for the conference. The MSU Marketing Club is sponsoring the event.

Participants will include representatives from the following universities: Michigan State, Wayne State, Eastern Michigan, Central Michigan, Western Michigan, Northern Michigan, Eastern Michigan, Central Michigan, Western Michigan, Northern Michigan, Eastern Michigan, Central Michigan, Western Michigan, Northern Michigan.

The conference will be held at the Holiday Inn in East Lansing. The program will include a luncheon, a business meeting, and a social hour.

Legislators Squabble Over Ferris Nomenclature

The Michigan Senate turned down a bill to change the name of Ferris State University to Ferris State College.

The bill, introduced by Sen. R. St. Clair, would change the name of Ferris State University to Ferris State College. The bill was defeated in the Senate.

Sen. St. Clair argued that the name "Ferris State University" was misleading and that the institution should be known as a college.

Opponents of the bill argued that the name "Ferris State University" was well established and should be retained.

Cap-Gown To Audition Entertainers

Student entertainers will try out Saturday for the Cap and Gown Series sponsored by the Continuing Education Service.

Auditions for vocal and instrumentalists and quartets, dancers of all types and other entertainers will be held at the Center auditorium at 7 p.m.

Students who are selected will perform at campus functions and state activities during the school year. They will be paid a contract fee.

"This is a good opportunity for students to gain valuable experience before groups of all sizes and to earn extra money," Gordon T. Coats, coordinator of the Cap and Gown series, said.

"To provide a better service for groups, requesting entertainment, we would like to draw more entertainers from the vast reservoir of talent here."

Interested students are asked to call the Cap and Gown office at 355-4570 for appointments.

AAUP Blasts Michigan Higher Education Budget

AAUP criticism was leveled at Gov. George Romney's budget provisions for higher education by officials of the Michigan Association of University Professors (AAUP).

John A. Drews, president of the AAUP chapter, called the budget "niggardly."

"The budget is not adequate," Drews said. "Many students are being denied an education on the part of the state. At present, it does not seem as if these hopes will be realized."

Romney's budget recommendation for MSU fell nearly \$6 million short of the requested figure.

"We understand that the state has financial problems," Drews said. "However, education deserves the utmost financial support from the people of Michigan."

The AAUP chapter at Wayne State University called Romney's budget for Wayne "miserly" Wednesday. The Wayne appropriation of \$17,123,159 fell more than \$5 million short of the requested figure.

Hillel Foundation Sabbath Services

Friday, Feb. 22, 7:30 P.M. and Saturday, Feb. 23, 10:00 A.M. at Hillel.

SUNDAY, FEBRUARY 24, 6:00 P.M.
Supper-Forum at Hillel.

ALFRED G. MEYER will speak on "MARKS AND RELIGION". Rides from Phillips and South Camp at 5:50 P.M. A hot great supper will be served.

Everyone Welcome!

Coming Sunday, March 3, 8 P.M. Forestry Cabin JOE & PENNY ARONSON, folksingers, in a program of international folk songs and humorous and satirical wags. Everyone Welcome.

Silicone Saves Salty Shoes

Salt ruining your shoes? This can be avoided if you give a silicone treatment, according to Tim Kisse, manager of the MSU Shoe Repair.

Silicone prevents the salt from soaking into the leather.

To completely "salt-proof" your shoes, use a silicone spray. It is available in a convenient size, then apply another coat. Kisse said.

When this dries, polish your shoes with a paste wax.

When salt gets on silicone-treated shoes it can be easily washed off with saddle soap.

Salt will eat into the finish of leather shoes not treated with silicone, Kisse said.

When this happens the shoes must be soaked in a special preparation, and then be refinished and recolorized.



EXAMINES PLANTS—John E. Cantlon, professor of botany and plant pathology, examines a plant in the horticulture greenhouse. Cantlon is a member of the American Institute of Biological Sciences governing board.

Ag Econ Department Plans Management Education

Michigan State's department of agricultural economics will direct an experimental management education program with a grant of \$304,979 from the W. K. Kellogg Foundation of Battle Creek.

L. L. Duger, chairman of the agricultural economics department, said the experiment's major promise is that intensive educational work with farm families can improve farm management skills and increase incomes of participating families.

Scheduled to begin April 1, the program will directly involve an estimated 3,000 farmers by the end of 1965. It will be directed by MSU's extension specialist staff in farm management.

Foundation funds will also enable the establishment of a staff of district farm management agents. The district staff will work closely with the 300 agents of MSU's Cooperative Extension Service located in nearly every Michigan county.

The new program will be directed by John Doneth, project leader in farm management. Participating farmers will be expected to pay a fee to cover costs of processing their farm business information. The University's contribution to the educational phases of the program will be in the form of materials, as well as data processing and computer facilities.

MSU Credit Union To Hold Meeting

"Do It Yourself With Cash" is the theme of the annual MSU Credit Union business meeting at 6:30 p.m. Saturday in the Big Ten Room of Kellogg.

The slogan will remind members that up to \$800 is available for almost any purpose imaginable through the new "Instant Cash" loan service.

Dinner and entertainment will be provided.

Larrabee's SPORT SHOP

325 S. Washington Ave. Ph. IV 5-5729

OPEN MON. & FRI. NIGHTS TILL 9 P. M.

ALL SKI SWEATERS and HATS 40% off

SKI STRETCH PANTS 25% off

SKI BOOTS AND AFTER SKI BOOTS 25% off

SKI PARKAS 33 1/3% off

QUILTED INSULATED 33 1/3% off

NYLON SHELLS 25% off

Ski Goggles & Glasses 25% off

ALL MODELS SKIS... 25% off except Harts

REMEMBER ITS QUALITY at LARRABEE'S SPORT SHOP

Financial Irregularities Threaten Biology Group

The American Institute of Biological Sciences (AIBS) must either demonstrate fiscal responsibility or be declared bankrupt by the federal government.

The AIBS governing board met with the NSF governing board Jan. 23 and 24 in Washington concerning the emergency.

"There is no emergency here," said Cantlon. "There is no suspicion of fiscal dishonesty or personal profit."

The money given to AIBS for the Biological Science Curriculum Study, a long-term study of high school biology teaching, was put into a general fund. Part of the fund was used to make a biological film series.

NSF claims its grant should have been used only for the curriculum study and also that overhead from the grant was wrongfully used to pay for clerical help and publication costs.

Cantlon explained that AIBS used had judgement. Scientists are usually given freedom to use grant money to pursue careers which develop in their research.

Cantlon believes that AIBS should be completely dependent upon its members for financing instead of using any overhead from federal grants.

AIBS was founded in 1947 as part of the National Research Council and became independent in 1954 with a grant of \$17,000 from NSF.

Jacobson's Accessories

Tote your shoes with fashion ease

Solve one of winter's woes... a convenient handled, zip-closure carrying case to tote your slippers and from the office, class, or social outing. Simulated leather in black, blue, tan, or camel, with stripes, and tweeds at 2.00. Assorted tapestry, 3.00. Gros Pointe, 5.00.

THURSDAY STORE HOURS 9:30 A.M. TO 5:30 P.M.

The Raincape combines dashing drama with practical reversibility and weathers spring showers with undampened enthusiasm and complete water-repellency. On one side, it's braid-bound cotton suede... on the other, synthetic side with leather-like texture. Brass-buttoned. Navy-red or black-camel. Sizes extra small, small, medium. 25.00

Jacobson's Sportswear

Jacobson's Sportswear

The Raincape combines dashing drama with practical reversibility and weathers spring showers with undampened enthusiasm and complete water-repellency. On one side, it's braid-bound cotton suede... on the other, synthetic side with leather-like texture. Brass-buttoned. Navy-red or black-camel. Sizes extra small, small, medium. 25.00

Jacobson's Sportswear

Eat, Yak At Game-Don't Make Faces

By A. R. DRURY

There is a certain logic to the way from the ladies' desert, where bridge is usually an excuse to eat and gossip, to professional tournaments by crowded mezzanines.

I know at one occasion when a group of friends went to have yakking only eight hands were dealt from 1 to 100 part. On the other hand, some devoted players get together for an entire week-end and play steadily, except for snack breaks, in the case of 12 hand a hour.

When one of bridge players get into a game of 12 hand, this quickly becomes the party for the day with these players see more excitement and value of activity — and to have them.

Building is getting more water control at the time, but the importance of this, including bridge, are well known to many individuals players.

Good, devoted players require the best cooperation at the partners. Legal, subscriptions can be given to the press. It's a lot of work.

It isn't necessary to get to see facial expressions in games to draw your partner's play. It is possible to have a very good understanding of the game without being able to see the play.

The following hand shows the play of a game, proper to suit.

♠ 10 9 8 7 6 5 4 3 2
♥ A K Q J 10 9 8 7 6 5 4 3 2
♦ A K Q J 10 9 8 7 6 5 4 3 2
♣ A K Q J 10 9 8 7 6 5 4 3 2

♠ 10 9 8 7 6 5 4 3 2
♥ A K Q J 10 9 8 7 6 5 4 3 2
♦ A K Q J 10 9 8 7 6 5 4 3 2
♣ A K Q J 10 9 8 7 6 5 4 3 2

♠ 10 9 8 7 6 5 4 3 2
♥ A K Q J 10 9 8 7 6 5 4 3 2
♦ A K Q J 10 9 8 7 6 5 4 3 2
♣ A K Q J 10 9 8 7 6 5 4 3 2

♠ 10 9 8 7 6 5 4 3 2
♥ A K Q J 10 9 8 7 6 5 4 3 2
♦ A K Q J 10 9 8 7 6 5 4 3 2
♣ A K Q J 10 9 8 7 6 5 4 3 2

♠ 10 9 8 7 6 5 4 3 2
♥ A K Q J 10 9 8 7 6 5 4 3 2
♦ A K Q J 10 9 8 7 6 5 4 3 2
♣ A K Q J 10 9 8 7 6 5 4 3 2

♠ 10 9 8 7 6 5 4 3 2
♥ A K Q J 10 9 8 7 6 5 4 3 2
♦ A K Q J 10 9 8 7 6 5 4 3 2
♣ A K Q J 10 9 8 7 6 5 4 3 2

♠ 10 9 8 7 6 5 4 3 2
♥ A K Q J 10 9 8 7 6 5 4 3 2
♦ A K Q J 10 9 8 7 6 5 4 3 2
♣ A K Q J 10 9 8 7 6 5 4 3 2

♠ 10 9 8 7 6 5 4 3 2
♥ A K Q J 10 9 8 7 6 5 4 3 2
♦ A K Q J 10 9 8 7 6 5 4 3 2
♣ A K Q J 10 9 8 7 6 5 4 3 2

♠ 10 9 8 7 6 5 4 3 2
♥ A K Q J 10 9 8 7 6 5 4 3 2
♦ A K Q J 10 9 8 7 6 5 4 3 2
♣ A K Q J 10 9 8 7 6 5 4 3 2

♠ 10 9 8 7 6 5 4 3 2
♥ A K Q J 10 9 8 7 6 5 4 3 2
♦ A K Q J 10 9 8 7 6 5 4 3 2
♣ A K Q J 10 9 8 7 6 5 4 3 2

♠ 10 9 8 7 6 5 4 3 2
♥ A K Q J 10 9 8 7 6 5 4 3 2
♦ A K Q J 10 9 8 7 6 5 4 3 2
♣ A K Q J 10 9 8 7 6 5 4 3 2

♠ 10 9 8 7 6 5 4 3 2
♥ A K Q J 10 9 8 7 6 5 4 3 2
♦ A K Q J 10 9 8 7 6 5 4 3 2
♣ A K Q J 10 9 8 7 6 5 4 3 2

'Peanuts' People Visit Daily Comic Strip A Big Hit

A little boy with a baseball cap who didn't get any Valentines this year... A very young lady who has to have someone to admire... This trio, known to all as Charlie Brown, Snoopy and Lucy, are the leading characters in the comic strip "Peanuts," created by Charles M. Schultz.

He and his cohorts Lucy, Snoopy, Pig Pen, Linus, Schroeder, and Friends... Today, the comic strip appears in a majority of the daily newspapers in the country, including the State News.

One of America's favorite juvenile philosophers, Charlie has become a national celebrity.

But even though Charlie has become a nation-wide celebrity, he is still the chubby little boy who has a word of advice to anyone willing to listen.

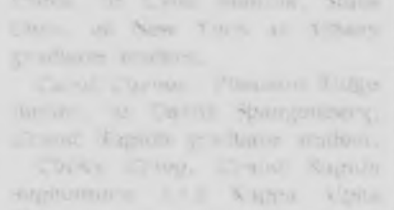
Each morning, as Schultz comes to campus, he has suggestions or words of wisdom for his fans. Recently he announced to all that his main ambition in life is to be "overjoyously happy."

And although Charlie has never launched a kiss, with a checker game — he once lost 121 games in a row and came out smiling — he writes with an ink pen, he still finds work to be happy.

Schultz's latest book entitled "Happiness is a Warm Puppy," one of the "Peanuts" characters finds a chance to express his definition of supreme happiness.

Snoopy might be able to find his greatest pleasure in his Spartan campus — he could punt his football on the banks of the Red Cedar, or smell the flowers in the greenhouse.

LOSING AGAIN?—Poor Charlie Brown, star of the "Peanuts" comic strip, he's usually on the losing baseball team. Here, Charlie is shown as he decides not to steal second base, in part of a comic strip given to William Mays, Providence, R.I., junior, by the creator, Charles Schultz.



LOSING AGAIN?—Poor Charlie Brown, star of the "Peanuts" comic strip, he's usually on the losing baseball team. Here, Charlie is shown as he decides not to steal second base, in part of a comic strip given to William Mays, Providence, R.I., junior, by the creator, Charles Schultz.

Pinnings And Engagements

Some announcements and dates... [Detailed list of pinnings and engagements for various fraternities and organizations, including dates and names.]

Untitled

Perhaps one should think - only not too long with partly closed eyes to look around, And see only those things one wishes... Perhaps then one would miss - miss? Would it be missing... escaping... Yes, perhaps it would be possible to place your hand fingers spread far, apart over your eyes sitting the acceptable from the unacceptable..... perhaps

That to see the world - the people - the chain of events and to just partly care about the part. Perhaps then you'd miss it. The unknown it that always is there. You would sense it coming and close the fingers - it out of sight out of mind and reality and you - perhaps

Closing yourself - your mind like the furniture store and its last big sale - last big thing - for an eternity - a small one. First when it comes screen, close hide away. A game - yes - open close open close - relief. It's a game I'll just watch it. No effort. I needn't close my store. I'll just sit here on the 50 yard line and watch it - this game of men. perhaps

I can see the game the gang's playing Bay girl girl boy game Some are playing for real - they'll probably win..... perhaps Some are just playing with their shells... they're really just spectators too. You can tell by their face on top of their face. You peer in and it's hollow - you'll never see - nor I - perhaps That's cool sharp really neat putting free love bubbles bear

twisting stomping necking cheating The new freedom that's not new and that's not freedom. Thinking it is - it will wither and fade... I think I'll change channels though - the adult game beckons me The sophisticated complicated wistful boisterous hysterical but sad game played by all some for real - others afraid - they're watching, too. They play with everything - like God - statues idols creeds covenants pledges but never commitments Some do - but others - they're watching. Should I withdraw into my closet and watch? It's easier but is it the way? Why not keep watching with the Jesus and the everybody's. Why not - it's best - perhaps But wait what are we watching - and why. Isn't this the Hell we've heard of. No devil - no fire - Watching but not joining. Yelling Chattering gossiping talking but not real. Surface religion - isn't that Hell. Just watching life. Can we be shells and cores - two parts only opening when we choose - can we - perhaps

(Editor's Note: The State News recently received the above poem, written by Judy Harrison in the fall of 1961. Judy, an East Lansing sophomore, and her father, William Harrison, asst. professor of psychology department, were killed in a car accident in November, 1962.)

It's The Rage!

Suede Patches For Sweaters

We can replace the suede patches on all bows of sweaters.

4 styles to choose from

Louis Cleaner and Shirt Laundry

201 E. Grand River - 22-2-2027
Across From Student Services Building

DINNER FOR TWO

(For the Price of One)

Every Monday and Friday

- Filet Mignon
- Shrimp
- Chicken

Dines RESTAURANT

LIEBERMANN'S

prevents pocket bulge!

OUR Card-Case WALLET

Smaller! More compact! Yet it holds currency and all your cards and photos neatly. And even fits in your pocket!

- BUFFALO GOLF \$3.95
- SADDLE COWHIDE \$5.95
- ENGLISH MOROCCO \$7.95

(After mail)

Matching Key Cases, too, from \$1.95

FREE Gold Monogram

Lansing EAST LANSING
107 South Washington 209 E. Grand River

International Harvester

wants the graduate who has ideas of his own

Today's International Harvester Company wants men with fresh ideas for engineering, making and selling motor trucks, earthmoving and aerospace equipment, gas turbines, farm machinery and steel products.

We are active and growing in all these fields and we need mechanical, electrical, metallurgical, industrial and agricultural engineers, mathematicians, accountants, statisticians and sales personnel.

Though we are a company of world-wide dimensions, we are organized in such a way that no single department* is so large that a man of talent will not be seen, heard and recognized. And we intend to keep it that way!

An IH executive will be on campus Feb. 25, 26, 1963 to interview interested students. If you can't arrange a personal interview, you are invited to write to the General Supervisor of Employment and Recruitment, International Harvester Company, 180 North Michigan Avenue, Chicago 1, Illinois.

*Including our several modern research and development centers.

INTERNATIONAL HARVESTER

"A good company to know better"

1962 World-wide sales	\$1,837,488,000
Motor Trucks	\$ 821,704,000
Farm Equipment	\$ 612,945,000
Construction Equipment	\$ 227,483,000
All Other	\$ 175,356,000
Number of Plants	41
in U.S.A.	21
in foreign countries	20
Assets, as of 12/31/62	\$18,207,000,000
in U.S.A.	\$6,800,000,000
in foreign countries	\$11,407,000,000
1962 Research and Engineering Expenditures	\$ 54,368,000

It is first in two world markets: farm equipment and heavy-duty trucks. It is second in world production of construction equipment and third in production of all sizes of trucks.

An Equal Opportunity Employer

Whenever you go to look better -

IRROU

How to be colorful - without overdoing it

HATCHET

DAYS



AT
CENTRAL
MICHIGAN'S
LARGEST
SHOPPING CENTER
FRANDOR

AQUARIUM SPECIAL

at FRANDOR PET SHOP
5 Gallon Tank - Pump
Filter - Tubing - Light
Heater - Food - Neu-
tralizer
\$14.29
reg. price \$21.44

ONE TO A CUSTOMER
This Coupon Is Good For
**ONE FREE TROPICAL
FISH**

GOOD ONLY FRIDAY & SATURDAY
Feb. 22 & 23, 1963

Jewelry Buys

SPECIAL!
Costume Jewelry
Values to \$2.00
.59¢

S
A
V
E

SPECIAL!
One week only...
Charms of your
choice... orders invited
25% off.

Diamond Engagement
and Wedding Rings of
the Finest Quality.
Keepsake
DIAMOND RINGS

Authorized Agency for
Universal - Geneva, the
world's finest in fine
watches.

Pre-Spring showing of our costume jewelry... NOW!
"Diamond Bonus Stamps", given with every purchase,
redeemable on diamonds here. Come in for a look at
the Wyler Incaflex... It changes the date automati-
cally, and the prices start at just \$39.95.

"Three years to Pay" at;
Wm. H. THOMPSON, Jeweler of distinction...
Frاندor Shopping Center

THURSDAY
FRIDAY
SATURDAY
FEB.
21, 22, 23



Special Purchase!

2000 L.P. RECORDS!

Choose From:

- Top Artists
- Popular
- Jazz!
- Classical
- Mono & Stereo Recordings



Hit Records By:

- Capitol ● Decca
- Columbia
- London ● Epic
- Mercury
- Warner Bros.
- Many More

"WALK-IN" RECORD DEPARTMENT, FRANDOR SHOPPING CENTER

IV 7-717

Hatchet Days Sale

MEN'S SUITS

15 suits... **\$39.00**
reg. \$59.98

9 corduroy suits... **\$19.00**

20 sport jackets... **\$19.00**
reg. \$29.98 - \$35.00
all 2 button, natural shoulders

At the store where styles start

Roger Stuart Ltd

FRANDOR SHOPPING CENTER

Open 9 a. m. to 9 p. m. Monday thru Friday... Saturday till 6 p. m.

HATCHET DAYS



For Men and College Students

Limited Quantity - Odd Lots - Broken Sizes

Sport Shirts..... val. to \$10	\$2-\$5	Suits..... val. to \$75	\$25-\$35
Dress Shirts..... val. to \$12	\$2-\$5	Winter Jackets... val. to \$50	\$5-\$20
Men's Socks..... val. to \$3	2/\$1	Sweaters..... val. to \$20	\$4-\$10
Neckties..... val. to \$5	2/\$3	Car Coats..... val. to \$55	\$15-\$25
Shirts..... val. to \$10	\$5-\$10	Mufflers..... val. to \$5	2/\$3
Sport Coats..... val. to \$50	\$10-\$20	Sport Zip Jackets to \$15	\$6-\$10
Top Coats..... val. to \$75	\$25-\$35	Suits and Top Coats to \$90	\$49-\$69

HOLDEN REID

Mon. thru Fri. 9 a.m. to 9 p.m. Sat. 11 a.m. to 6 p.m. FRANDOR CENTER 106 S. WASHINGTON

FEDERAL'S

KEEPS PRICES DOWN

ALL IN ONE! THE SHARP PORTABLE RADIO-PHONO



Eleven-transistor radio converts in an instant to a smart, self-contained dual-channel, 2-speed personal phonograph

Here's an amazing 4-way entertainment miracle... an FM and AM radio... a 33 rpm and 45 rpm record player! Connect it to another radio to enjoy fine stereo, or enjoy personal stereo through the ear-phones that are included. Superb micro-motor maintains a constant speed despite variations in battery power. It's unique, you must see it!

79⁹⁵
NO MONEY DOWN

CONVERTS AT THE TOUCH OF A FINGER



Place it on its built-in support legs



Open the lid on back and place record



Then you just close the back and play



RECORD SALE! SAVE ON YOUR FAVORITES
Tommy Dorsey & his Orchestra presenting Frank Sinatra
Many, many favorites by the "Old Master," sung for you as only Sinatra can sing them. These will go fast, so get yours early at Federal's.

76¢

OPEN EVERY NIGHT TO 9
Monday through Saturday

FEDERAL DEPT. STORES

FRANDOR CENTER
PHONE: IV 7-5051

Cagers Seek To Snap Loss String At Five

State Can Kill IU's Title Aspirations

After three straight losses to Conference title contenders, Michigan State's basketball team gets its last chance to bounce one of the leaders out of contention when the Spartans take on Indiana at Bloomington Saturday.

The Spartans dropped successive games to Illinois, Minnesota and Ohio State in their last three outings. Those losses plus two previous ones add up to a five game losing streak.

State has dropped from third in league standings all the way to sixth as a result of the disastrous slump. The Spartans' Conference record is now 3-7.

Indiana with a 6-3 record is one game behind league leading Illinois and Ohio State and has a real good chance to displace them. The Hoosiers, last year's Big Ten crown in 1957-58.

They capitalized on superb shooting by Jimmy Ray and Tom Seymour to get a 96-84 loss in the Spartans' first meeting at Bloomington Saturday.

With a better than 27 point a game average in conference play, he has a steady jump shot from almost any range and is exceptionally accurate from the free throw line with 85 per cent.

Seymour has been the sixth leading scorer in the Big Ten with an average of 21 points a game. He is a 6-foot-4 senior, who plays center forward at games and rates as one of the best all-around basketball players in the Conference, if not in the nation.

The Val Anstey team—Dick and Tom—combine with Seymour to fill out the Hoosier front line. They are a pair of 6-4 septuagenarians who were called the "Iron Horse" team in the league before Michigan's Bill Burtes came along. In recent games they have shown considerable improvement and have been one of the most important reasons for keeping Indiana in the Big Ten race.

The remaining backcourt spot in the Hoosier lineup will be filled by either Steve Kadenbach or Al Harrier. Kadenbach has been the starter recently, but Harrier played most of the first MSU-Indiana game and proved himself as an excellent ballhandler.

Michigan State will play its usual seven-man lineup against the Hoosiers. The starters will be Bill Berry, Paul Cook, Ted Williams, Murray Sanders and Jack Lambert. Ready to go in when necessary will be Fred Thomas and Bill Schwartz.

Last year, MSU played a pair of games against the Hoosiers. Indiana won the first at its home floor, 78-71, but the Spartans surprised the Hoosiers at Janesville, 77-65.

Michigan Supplies Two Foes

Mat Squads Stage Battle Of Unbeatens

A battle of unbeaten is in store this Saturday when the Michigan State Spartans pay a short visit to the Michigan Wolverines for what MSU Coach Grady Pennington says should be "a real barn burner" of a wrestling match.

Both squads possess great individual performers and fine all-around ability.

Wrestling at 130 pounds for the Wolverines will be a sparkling sophomore, Dave Depenno of Kalamazoo. Another strong sophomore is Lee Detrick at 147 pounds. Detrick has lost only two of his Conference bouts.

Strongest man for the UM grapplers is veteran heavyweight Jack Bardeen. A senior, Bardeen is undefeated and downed last year's Big Ten champ, Roger Pihlak, by scoring a pin. He is a strong contender for this season's crown.

Pennington had high praise for the Wolverine matmen.

"They're strong all the way. They're tough all the way in and down the line and we're going to have to be on our toes."

Michigan Coach Cliff Keen has pulled several of his wrestlers down a weight class in order to make them even tougher. The Wolverines will be wrestling those who are lighter than their previous opponents and hope to gain an advantage in this manner.

Coach Pennington said that his team is in good physical and mental condition for the match. "We are all right physically and we're ready. We really want this one."

Gary Smith (125) and Cecil Holmes (130) are undefeated against Big Ten competition by the Spartans. Homer McClure, also unbeaten, will have to handle the 147-pounder in the heavy-weight division.

MSU line to the Wolverines 20-11 last season. It was this year would have been 20-0 if not for the loss to Michigan State in the conference.



MICHIGAN GOALIE BOB Gray returned last week from a knee operation to lead the Wolverines to 4-1 and 5-4 upset wins over high-flying Michigan Tech.

Cellar Fight Set Between Puck Teams

The Michigan State and Michigan hockey teams have a couple of things in common—each has a foot in the WCHA basement and both can't wait to get out of such an awkward position.

They'll get a chance to do something about it this weekend at the MSU ice arena. State, 75-8-0, meets the Wolverines, 35-11-2, in Friday and Saturday games starting at 8 p.m.

"Don't make a mistake about it—Michigan has outstanding personnel," MSU Coach Arno Bessone warned Wednesday.

"They lost (Bob) Gray, their goaltender, for a long time because of a knee injury."

"He played last week against Michigan Tech, and you saw what happened."

The Wolverines bounced the win-happy Huskies twice at Ann Arbor, 4-1 and 5-4.

And Bessone wasn't whistling in the dark about Michigan's fine personnel.

Soph wing Gary Butler is the WCHA's top goal producer with 18 and is also tied for the league scoring leadership with 24 points.

In 20 games this season, Butler has triggered 23 goals and 16 assists for 39 points.

Center Gordon Wilkie can't be overlooked either. In 20 games he has notched seven goals and assisted 21 times for 28 points.

Ross Morrison and Larry Babcock have 24 and 22 points, respectively.

Although Michigan is tied for last in the win-loss column, the Wolverines are setting the pace in a couple of other—penalties and penalty minutes.

The Wolverines have been whistled down for 98 penalties, totaling 224 minutes. By comparison, the nearest challenger in those departments is Tech with 91 penalties for 207 minutes.

This weekend's series includes Wayne Kautsch with State's Doug Robinson, who both were number one skaters last December.

"Michigan is certain to be up after the two wins over Tech," Bessone figures. "But this is a real prestige series—and it doesn't take much to get anyone ready for it."

State whipped Michigan twice at the beginning of the season in Ann Arbor, 2-1 and 4-3.

Sellouts are assured here Friday and Saturday.

Four Fives Tussle For Big Ten Title

One contender was virtually eliminated from title contention in Big Ten basketball action Monday night, but four others remain as the Conference race continues to be a wide open affair.

Iowa had its title hopes blasted by Indiana when the Hoosiers took a one point decision, 72-71, from the Hawkeyes. The Hoosiers dropped to fifth place with a 5-4 mark while Indiana stayed a game behind the leaders in fourth with a 6-3 state.

Illinois and Ohio State, both conquerors of the Spartans, continued their dogfight for first as both won to run their league records to 7-2. The Illini chumped Purdue, Conference doormat this season, 87-79.

Minnesota, a team most observers say has the greatest edge on the schedule wise in its remaining games, stayed a meager half game in back of the leaders with a 72-45 trouncing of Wisconsin.

Golden Gophers play three of their remaining four games at home, but the opponents in those contests are Illinois, Iowa and Ohio State. That makes them the only contender left against all of the other three.

Illinois has two home games and two road affairs. It must play Minnesota and Michigan away. Ohio State travels to Minnesota and Indiana and has only a contest with Purdue left at home.

Michigan State with little left to salvage in this season, has games with Indiana and Northwestern on the road and encounters withconsin and Purdue. The main incentive for the Spartans is knocking off the Hoosiers at Bloomington, Ind. in their weekly Saturday and improving on last season's record.

Last year State was 3-11 in the conference. With losses now, all they have to do is win one more to improve that mark.

Gymnasts Meet Golden Gophers

The Spartans gymnast squad faces their second opponent in their last, the Minnesota Gophers, Saturday at 7 p.m. in the Men's J.M. Sports Arena.

This year's edition of the display sport of a much-improved version over last year's team, which limped into a tough schedule with a six-man squad that played several in the Big Ten meet.

"I don't believe we'll place below fourth in the Big Ten," professional head coach Pat Bird.

Only one letter winner in game from the 1962 Gopher squad, but he was the team's leading point-producer, Dick Stone, who is assisting Bird this season.

MSU line to the Wolverines 20-11 last season. It was this year would have been 20-0 if not for the loss to Michigan State in the conference.

MSU line to the Wolverines 20-11 last season. It was this year would have been 20-0 if not for the loss to Michigan State in the conference.

MSU line to the Wolverines 20-11 last season. It was this year would have been 20-0 if not for the loss to Michigan State in the conference.

MSU line to the Wolverines 20-11 last season. It was this year would have been 20-0 if not for the loss to Michigan State in the conference.

MSU line to the Wolverines 20-11 last season. It was this year would have been 20-0 if not for the loss to Michigan State in the conference.

MSU line to the Wolverines 20-11 last season. It was this year would have been 20-0 if not for the loss to Michigan State in the conference.

MSU line to the Wolverines 20-11 last season. It was this year would have been 20-0 if not for the loss to Michigan State in the conference.

MSU line to the Wolverines 20-11 last season. It was this year would have been 20-0 if not for the loss to Michigan State in the conference.

MSU line to the Wolverines 20-11 last season. It was this year would have been 20-0 if not for the loss to Michigan State in the conference.

MSU line to the Wolverines 20-11 last season. It was this year would have been 20-0 if not for the loss to Michigan State in the conference.

MSU line to the Wolverines 20-11 last season. It was this year would have been 20-0 if not for the loss to Michigan State in the conference.

MSU line to the Wolverines 20-11 last season. It was this year would have been 20-0 if not for the loss to Michigan State in the conference.

MSU line to the Wolverines 20-11 last season. It was this year would have been 20-0 if not for the loss to Michigan State in the conference.

MSU line to the Wolverines 20-11 last season. It was this year would have been 20-0 if not for the loss to Michigan State in the conference.

MSU line to the Wolverines 20-11 last season. It was this year would have been 20-0 if not for the loss to Michigan State in the conference.

MSU line to the Wolverines 20-11 last season. It was this year would have been 20-0 if not for the loss to Michigan State in the conference.

MSU line to the Wolverines 20-11 last season. It was this year would have been 20-0 if not for the loss to Michigan State in the conference.

MSU line to the Wolverines 20-11 last season. It was this year would have been 20-0 if not for the loss to Michigan State in the conference.

MSU line to the Wolverines 20-11 last season. It was this year would have been 20-0 if not for the loss to Michigan State in the conference.

MSU line to the Wolverines 20-11 last season. It was this year would have been 20-0 if not for the loss to Michigan State in the conference.

MSU line to the Wolverines 20-11 last season. It was this year would have been 20-0 if not for the loss to Michigan State in the conference.

MSU line to the Wolverines 20-11 last season. It was this year would have been 20-0 if not for the loss to Michigan State in the conference.

MSU line to the Wolverines 20-11 last season. It was this year would have been 20-0 if not for the loss to Michigan State in the conference.

MSU line to the Wolverines 20-11 last season. It was this year would have been 20-0 if not for the loss to Michigan State in the conference.

MSU line to the Wolverines 20-11 last season. It was this year would have been 20-0 if not for the loss to Michigan State in the conference.

MSU line to the Wolverines 20-11 last season. It was this year would have been 20-0 if not for the loss to Michigan State in the conference.

MSU line to the Wolverines 20-11 last season. It was this year would have been 20-0 if not for the loss to Michigan State in the conference.

MSU line to the Wolverines 20-11 last season. It was this year would have been 20-0 if not for the loss to Michigan State in the conference.

Ski Rental
Equipment \$5.00
● Ski
● Boots
● Poles

WEEKEND - FRIDAY - MONDAY
LARRY CUSHION SPORTING GOODS
800 SINE - Ph. 21 5-7495

THIS:

HERE:

CAMPUS THEATRE
Hurry! Last 3 Days
6:30 to 9:30 P.M.
Features Today
1:30 - 3:30 - 5:30 - 7:30 - 9:45

ROBERT MITCHEM · SHIRLEY MCLAINE
TWO FOR THE SEESAW
Starting Sunday
Winner-Cannes Film Festival Award

THE SEASON'S BEST COMEDY!
—Life Magazine—

"A BRILLIANT FARCE!"
—New Yorker Magazine—

JOSEPH E. LOVINE
MARCELLO MASTROIANNI
WALTER BUSTON

Divorce Puccia-Sandrelli
Italian Style

COMMUNITY CIRCLE PLAYERS
Presents
"The Playboy of the Western World"
A comedy by J.M. Synge
Directed by Jack Bird
Last 3 Nights! -- Feb. 21-22-23
Curtain 8:30 P.M., ... 10:00
(Students with \$2.00)

CIRCLE PLAYHOUSE
1201 Sheridan St., Lansing
Tel. 2-1440, A.M. 11:30-9:00 P.M.

GRAND OPENING
Feb. 22nd
WONDERLAND BY NIGHT
Dancing Tues. Fri. & Sat. 8 P.M.-1 A.M.
Music by
RICK ALLEN BAND
&
TERRY-TUNES BAND
College night - every Tuesday
Dress casual! Only \$2.00 per couple
Fri. & Sat. Jackets and Ties - \$3.00 per couple
On U.S. 117 - Legion Rd. - Mason

STATE THEATRE
Last Times Today! ----- Feature at 7:30 & 9:25
Francis Truffaut's "Shoot the Piano Player"
Starring Charles Aznavour
STARTING FRIDAY
"END OF DESIRE"
in Eastman Color
(Based on "Les Femmes" by Guy de Maupassant
with Christian Marquand - Antonella Lualdi)
ADDED! "The Three Seasons" 30 min. Featurette
* Tues. Wed. Thur. Feb. 20-21-22

A gold seal classic... To those people who take uncommon pleasure in good books, music and other works of art. We offer...
SOPHOCLES' Immortal classic--
IRENE PAPAS ANTIGONE

TO VISIT
JAMAICA
CALL
COLLEGE
Travel Office
332-8667

MICHIGAN THEATRE
Today... Last Day!
1:30 - 3:30 - 5:35 - 7:40 - 9:45
DEAN MARTIN LANA TURNER
WHO'S GOT THE ACTION?
STARTS TOMORROW!

THE GIANT STORY OF MODERN HAWAII!
Damon Runyon presents
8 Act Musical
CHAKIRIS NUYEN
YVETTE YVETTE
DARREN
ALINE MACMURDO / ELIZABETH ALLEN

GLADMER THEATRE
HURRY... Last 2 Days
Feature at 1:30 - 3:33
5:36 - 7:40 - 9:45 P.M.
EDGAR ALLAN POE'S
THE RAVEN
PRICE by LORRE and KARLOFF
Starts SATURDAY!
IT IS DIFFERENT. IT IS DARING.
MOST OF ALL, IT'S OWN TERRIFYING WAY IT IS A LOVE STORY.

JACK LEMMON
and
LEE REMICK
"DAYS OF WINE AND ROSES"

General Admission \$2.00
STUDENTS (with I.D.) \$1.00
LAST 3 DAYS
NUDE ODYSSEY
7:00 - 10:10
PLUS
"I Love, You Love"
Technical - at 9:30
STARTING SUNDAY
THE FILM THAT INSPIRED "E.T."
I SPIT ON YOUR GRAVE
Kay Kendall - Kenneth More
"GENEVIEVE"

Coral Gables
Home Restaurant
"The name that made PIZZA famous in Lansing"
NOW OPEN DAILY 11:AM - 2:AM
Lunches Dinners Sandwiches Pizza
RATHSKELLER
OPEN DAILY 5 P.M. - INCL. SUNDAY
FINE FOOD ENTERTAINMENT
PHONE ED 71311 FOR TAKE OUT

"WE" HAVE THE LOWEST PRICES!

WE CONSTANTLY ARE RUNNING MARKETING SURVEYS AGAINST ALL MAJOR COMPETITION ON PRICES... BRANDS... PRODUCTS... CLEANLINESS... COURTESY... FRIENDLINESS..."WE" KNOW THE ABOVE STATEMENT IS TRUE...NOT JUST NEWSPRINT!!!

WE KNOW THAT IF YOU WANT TO STRETCH YOUR FOOD DOLLAR...THIS IS THE STORE TO GET THE MOST MILEAGE OUT OF IT...

WE SELL THE BRANDS YOU KNOW... (DelMonte-Kraft-Hill's Bros-Heinz-Kellogg-Pillsbury-etc.) AT THE "LOWEST" PRICE...

WE SELL GOOD PRIVATE LABEL BRANDS AT THE PRICE YOU LIKE TO PAY... THE LOWEST...

WE SELL U.S. CHOICE BEEF FOR THOSE WHO WANT TO TAKE THE GUESSWORK OUT OF BEEF BUYING... "THE FINEST".....

WE ALSO SELL THRIFTY BEEF FOR THOSE WHO WISH TO SPEND A LITTLE EXTRA TIME AND IMAGINATION IN PREPARATION TO HELP STRETCH THAT FOOD DOLLAR.

WE HAVE A MODERN UP TO THE MINUTE STORE TO MAKE PARTING WITH YOUR FOOD DOLLAR AS MUCH OF A PLEASURE AS CAN BE EXPECTED....

WE EMPLOY YOUNG... COURTEOUS... FRIENDLY FOLKS TO SERVE YOU...

WE PRIDE OURSELVES IN HAVING THE CLEANEST STORE IN TOWN.....

WE HAVE A SPARKLING FRESH PRODUCE DEPARTMENT WITH PRICES THAT MAKE YOU SMILE.....

WE HAVE A COMPLETE...FROZEN FOODS...HEALTH AND BEAUTY AIDS...DAIRY...NON FOODS...DEPARTMENTS TO MAKE THIS A ONE STOP TRIP FOR YOU

WEDANG BUST IT, WHAT WE ARE TRYING TO TELL YOU IS—

IF YOU ARE NOT SHOPPING AT HI-LO....YOU ARE SPENDING TOO MUCH MONEY FOR FOOD!!

WHY PAY MORE ?

	TYPICAL STORE	HI-LO PRICES
Banquet Cream Pies	49¢	39¢
Kraft Macaroni & Cheese Dinner 7 oz.	2/37¢	15¢
Royal Gelatin ALL FLAVORS-REG. SIZE	3/29¢	3/23¢
Earnation or Pet Milk TALL TIN	2/33¢	14¢
Gerber's Baby Food STRAINED	6/59¢	3/25¢
DixieBelle Crackers LB. PKG.	25¢	2/39¢
Buttermilk Bread 1 1/4 LB. LOAF	2/43¢	2/39¢
Puffs Facial Tissues 400 COUNT BOX	29¢	2/49¢
Spartan T.V. Dinners CHICKEN-BEEF-TURKEY	39¢	33¢
Pillsbury Pie Crust Mix 9 1/2 oz.	22¢	19¢

COMPARE—YOU SAVE 70¢

LEAN GROUND BEEF

NO LIMIT-LB.

37¢

WHY PAY MORE ?

	TYPICAL STORE	HI-LO PRICES
Spartan Salad Dressing QT.	43¢	39¢
Spartan Peanut Butter 24 oz.	65¢	59¢
Kraft Roka Dressing DOUBLE SIZE 16 oz.	59¢	39¢
Kraft Catalina Dressing 8 oz.	39¢	32¢
Kraft Mayonnaise QT.	79¢	69¢
Catsup MISSION BRAND-BY DELMONTÉ 14 oz.	6/1.00	6/89¢
Ruby Bee Strawberry Preserves Big 20 oz. JAR	49¢	39¢
Armours Corn Beef 12 oz. TIN	55¢	49¢
Spam 12 oz. TIN	49¢	39¢
Appian Way Pizza Mix 2 PKGS.	70¢	67¢

COMPARE—YOU SAVE 87¢

PINK SALMON

TALL TIN WITH COUPON BELOW

39¢

COUPON

PINK SALMON TALL TIN

WITH THIS COUPON AND \$5.00 OR MORE PURCHASE

LIMIT ONE COUPON PER FAMILY

COUPON EXPIRES SAT., FEB. 23, 1963

39¢

U.S. CHOICE BEEF!

THIS MATURE...GRAIN FED...YOUNG TENDER BEEF. PROPERLY AGED...IDENTIFIED BY THE U.S. GOVERNMENT AS U.S. CHOICE...BUY WITH CONFIDENCE...

CHUCK ROAST U.S. CHOICE BLADE CUT LB.	49¢
Arm or English Cut Chuck Roast U.S. CHOICE LB.	69¢
Standing Rib Roast U.S. CHOICE LB.	83¢
Eye Steaks BONELESS U.S. CHOICE LB.	\$1.69
Beef Stew Boneless U.S. CHOICE LB.	79¢
Brisket Pot Roast U.S. CHOICE LB.	79¢
Ground Chuck LB.	69¢
SPARERIBS SMALL LEAN MEATY LB.	39¢

BIG TOP PEANUT BUTTER

BIG 18 OZ. JAR WITH COUPON BELOW

29¢

COUPON

BIG TOP PEANUT BUTTER BIG 18 OZ. JAR

WITH THIS COUPON AND \$5.00 OR MORE PURCHASE

LIMIT ONE COUPON PER FAMILY

COUPON EXPIRES SAT., FEB. 23, 1963

29¢

VAN CAMP'S CHUNK STYLE TUNA

4 1/2 Tins \$1

MICHIGAN BEET SUGAR

5 LB. BAG 47¢

SPARTAN - 3 LB. TIN LB. SHORTENING

49¢

THRIFTY MEATS

Available at 1400 E. Michigan Ave. & 4206 N. East St. stores only.

STEAK •Round •Sirloin •T-Bone THRIFTY BEEF LB.	69¢
Porterhouse Steak THRIFTY BEEF LB.	73¢
Short Ribs THRIFTY BEEF LB.	29¢
Chuck Roast BLADE CUT-THRIFTY BEEF LB.	43¢
Chuck Roast ARM OR ENGLISH CUT-THRIFTY BEEF LB.	59¢
Boneless Stew THRIFTY BEEF LB.	59¢
Boneless Rump Roast BONELESS-THRIFTY BEEF LB.	69¢
Delmonico Roast BONELESS-THRIFTY BEEF LB.	99¢

BUTTER 59¢

BATHROOM TISSUE DELSEY 2 PACK 19¢

PILLSBURY FLOUR 10 LB Bag 85¢

WHY PAY MORE ?

	TYPICAL STORE	HI-LO PRICES
South Haven Blueberries 300	31¢	3/79¢
Morgan Dark Sweet Cherries 303	37¢	3/1.00
Spartan Fruit Cocktail BIG 2 1/2 TINS	37¢	3/1.00
Dole Fruit Cocktail 303 TIN	25¢	5/1.00
Spartan Crushed Pineapple 100 2 TIN	33¢	29¢
Dole Pineapple Grapefruit Drink 46 OZ.	2/69¢	4/1.00
Lady Betty Prune Juice QT.	45¢	37¢
Thank You Tomato Juice QT. BOTTLE	29¢	2/49¢
Hawaiian Punch BIG 46 OZ. TIN	3/1.00	31¢
Spartan Pineapple Orange Drink 46 OZ. TIN	3/1.00	3/89¢

COMPARE—YOU SAVE \$1.38

HYGRADE-SLICED BACON

1 LB. PKG. 39¢

SPARTAN-FROZEN Strawberries

3 BIG 16 OZ. PKGS. 79¢

WHY PAY MORE ?

	TYPICAL STORE	HI-LO PRICES
Brook's Chili Beans 300	2/31¢	8/1.00
Mushrooms PENNSYLVANIA DUTCHMAN PIECES & STEMS BIG 8 OZ. TIN	49¢	39¢
Campbell's Pork & Beans 16 OZ.	2/29¢	12¢
Freshlike Cut & French Green Beans 306 CREAM STYLE & WHOLE KERNEL	2/43¢	6/1.00
Freshlike Corn 306	2/37¢	7/1.00
Freshlike Peas 306	2/43¢	6/1.00
Chase & Sanborn Coffee REG. OR DRIP LB.	69¢	59¢
Charmin Toilet Tissue 4 ROLL PACK	37¢	32¢
Baker's Chocolate Chips 6 OZ.	25¢	14¢
Pard Dog Food 16 OZ. CAN	2/35¢	10/1.00

COMPARE—YOU SAVE \$2.28

NOTICE: PRICES IN THIS AD ARE GOOD AT ALL HI-LO MARKETS




QUALITY PRICES

DISCOUNT FOOD MARKETS

1400 E. MICHIGAN AVE LANSING
1 BLOCK EAST OF SPARROW HOSPITAL ON SOUTH SIDE OF MICHIGAN AVENUE
OPEN MON. THROUGH SAT. 9 A.M. TO 9 P.M.

MSU Arts Program Plans For Expansion

The arts program for the University Theatre will be expanded to include the department of dramatic arts and the department of musical theatre. The program will enable the university to take a more active role in the cultural renaissance sweeping America today.

The new program will include dramatic arts, musical theatre, and opera. The department of dramatic arts will introduce gallery displays in the dormitories.

"The expanded production schedules for 1963-64 should sharply increase the number of opportunities for student participation in all areas of theatre and music," Dietrich said. "These opportunities will continue to increase as new dormitory complexes are built each year."

The program will provide new theatre opportunities for audiences in cities and educational institutions in the state as a part of the continuing education program.

AUSG Committee Gets 3 Additions

Three new members have been appointed to the AUSG Vice President's Committee. Tom Rasmussen, administrative vice president, said.

The new members are Henry Greenwood, Saginaw freshman; Donald Kothe, Detroit freshman; and Virginia Paganelli, Grand Rapids junior.

The committee will work on the AUSG history project, the library committee, and the registrar's committee.

Students Need OK For AUSG Post

Students must apply this term and receive AUSG approval to be president in the spring, Jim Billings, chairman of elections, said.

The constitution states a person who has not served a full year as a president of a major governing body and also has not served continuously in congress or the executive branch of the president's cabinet for at least the previous fall and winter terms, must have the approval of congress to enter the presidential race.

Viet Sinh won the 1961-62 independent league IM table tennis championship.

Let us style your hair for the "spin" Coiffures by helen barresy

open 'til 9:00 every evening

1045 E. Grand River Ave.

two blocks east of Abbott Hall ED-71639

THIS WEEK ONLY... 99¢

CLEANED AND PRESSED BY EXPERTS

Flash DRY CLEANERS and SHIRT LAUNDERERS FRANDOR CENTER

COIN-OP COUPON SAVE 50¢ Coin-Op-Dry Cleaning Reg 8lb Load...\$2.00 WITH THIS COUPON ONLY...\$1.50 THIS COUPON EXPIRES FEB. 23, 1963 FLASH CLEANERS

Placement Bureau

Interviewing at the Placement Bureau Monday, Feb. 25. Additional information in the Placement Bureau Bulletin for the week of Feb. 25 through March 1:

Cajon Valley Union School District - July 1963 - elementary school majors.

Interviewing mechanical, chemical and electrical engineers.

Litton Systems, Inc. - Data Systems Division interviewing electrical and mechanical engineers; math and physics majors.

General Electric Co. interviewing MBA candidates with emphasis on marketing.

Goodyear Tire & Rubber Co. interviewing chemical, mechanical, civil and electrical engineers; chemistry, physics, accounting and production administration.

Hughes Aircraft Co. interviewing electrical and mechanical engineers; chemistry, physics and math majors.

Goodyear Aircraft Corporation interviewing electrical, and mechanical engineers; math, and physics majors.

Kent County Board of Education interviewing special education, speech therapy, diagnostic, mentally handicapped and visiting teacher.

Hotel Corporation of America interviewing hotel, restaurant and institutional management and other business and liberal arts majors.

Interviewing electrical, mechanical and metallurgical engineers; marketing and other business majors.

Eastman Kodak Co. interviewing mechanical, chemical, electrical and metallurgical engineers; chemistry and physics majors.

National Castings Co. interviewing mechanical, chemical, metallurgical engineers; production management, marketing and business majors.

Procter and Gamble Co. interviewing marketing and other MBA, economics, advertising, general communication arts and journalism majors.

19 Study Short Course In Dairy Plant Supervision

Nineteen persons, employed in various phases of agriculture-industry, began classes Monday in a two-week short course in Dairy Plant Supervision.

Dairy Plant Supervision is one of three specialized short courses offered each winter term by the food science department.

The course will train supervisors and foremen in various plant and sales activities. Emphasis is on employee motivation, morale, selection and training, handling personnel problems, and other leadership qualities.

Exercises will also provide the student with opportunities to develop solutions to current supervisory problems of the industry.

"Short courses of this nature began as far back as 1894 in the dairy manufacturing field," said Harold A. Henneman, director of short courses.

"Our specialized short courses provide an opportunity for the employee working in a plant to obtain additional training which helps his promotional potential."

Henneman said that, unlike the ordinary "pressured" MSU student, these short course students will attend classes for forty hours each week over the two-week period.

Professors from the department of food science will be the instructors.

UT Schedules Comedy Tryouts

Tryouts for University Theatre's major production "She Stoops To Conquer," which will be produced spring term, will take place Monday and Tuesday nights between 7-10 p.m. in 49 Auditorium.

"She Stoops To Conquer," by Oliver Goldsmith is one of the classic comedies from 18th Century Great Britain.

Fourteen male roles will be cast, as well as four female roles.

Debate Team Travels To Ferris

The Spartan Debate team will travel to Ferris Institute in Big Rapids Saturday to participate in the Michigan Intercollegiate Speech League Novice-Varsity debate tournament.

All Michigan colleges and universities which belong to the Michigan Intercollegiate Speech League will participate.

TONIGHT ZOLTON FERENCY State Chairman of Democratic Party Will Speak At A Meeting Of Young Democrats 8 P.M. Parlor B, Union ALL INVITED

STATE VITAMIN & COSMETIC DISTRIBUTOR 4 doors South of American Bank & Trust III S. Washington

COUPON AQUA NET 69¢ REG. \$2.00

COUPON BAN DEODORANT 59¢ REG. 98¢

COUPON ONE A DAY TYPE VITAMINS 98¢ REG. \$2.98

Miss Clairol Reg. \$1.25 79¢
Revlon Refills Reg. \$1.10 99¢
Aquamarine Reg. \$2.50 . . . \$1.49
Contac Reg. \$1.45 . . . \$1.15
Crest Toothpaste Reg. 83¢ . . . 59¢

HOURS: Monday thru Friday 9 a.m. to 9 p.m. Saturday 9 a.m. to 6 p.m.

Dorm Complex Will Offer Varied Courses Next Year

A variety of courses beyond the University College level will be added to the Case-Wilson-Wonders complex next year, University officials said Wednesday.

Courses in art, advertising and introduction to Christianity are also being considered.

Other courses already offered, will definitely be offered again next year.

He said the main difficulty in offering the wider range of courses is getting instructors.

"We hope the wider variety of courses will make the curriculum more interesting to students in the dorm complex," he said.

Lyle Thorburn, manager of residence halls, said Wednesday that applications for the Case-Wilson group were "proportionately greater than the dorm halls."

"It is our experience that all prospective freshmen who are acquainted with the campus, many of them ask for assignments in the Case-Wilson group."

Vending Machine Decision Pending

William H. Combs, dean of university services, said he has not made a decision on the possibility of vending machines being installed in the basement lounge of the library.

Student congress recently passed and sent Combs a resolution favoring the installation of "hot drink" vending machines and improving the basement lounge area.

Earlier this week, Tom Rasmussen, AUSG administrative vice president and Lansing senior, received a letter from James Dennison, assistant to the president, which said that President Hannah would look into the matter when he gets back from his trip abroad.

Author To Discuss World Survival

Milton Mayer, noted author and lecturer will speak at 8 tonight on "The Two Worlds-Issues and Survival" in the social hall of Peoples Church.

The American Friends Service Committee of East Lansing and the Lansing Chapters of SANE, Women's International League for Peace and Freedom and the Fellowship of Reconciliation are sponsors.

A graduate of the University of Chicago, Mayer has traveled and taught extensively throughout Europe.

Theta Sigma Phi Initiates Five

Five communication arts majors were initiated into Theta Sigma Phi, professional women's journalism fraternity Sunday.

Initiated were Barbara Bradley, Caro Junior; Nancy Lewis, Detroit Junior; Mary Jackson, Royal Oak Junior; Leslie Klein, Weston, Conn., Junior and Gerry Hinkley, Marshall Junior.

Fred Siebert, dean of the College of Communication Arts, was the speaker.

Prof To Discuss Sino Food Crisis

George Borgstrom, international authority on food and population, will speak on "The Chinese Food Crisis" at 8 p.m. tonight in the Union Tower Room.

The speech is sponsored by the Humanist Society.

Borgstrom is a professor of food science and a lecturer for the Great Issues course.

College Satire To Be Given By St. John's

"Campus Brides", a humorous one act play by Norman Ashton will be presented by St. John's students parish.

The play, a satire on college life, will be shown in the basement theater of St. John's.

Members of the cast include Liz Luettold, Fenton sophomore, Mara Paulder, Grand Rapids sophomore, Elaine Urban, Lake Orion sophomore and Bill Pawlak, Jackson junior.

Other members of the cast are Tom Schuoneman, Benton Harbor sophomore, Larry Mackey, Akron, Ohio freshman and Gerry Walsh, Lansing senior.

Joe Klier, East Lansing junior is the director.

Admission is free.

West Shaw won the 1961-62 residence hall IM table tennis championship.

Exclusive but not expensive

the SINO MATERNITY FASHIONS

Choose from the largest selection in Central Michigan

- Dresses
- Sportsweat
- Seperates
- Sweaters
- Lingerie
- Foundations

Under New Management Watch for Grand Opening Soon *Favors *Door Prizes

Come in and browse 1918 E. Michigan IV 4-9607

not extreme... just extremely Good-Looking!



MADISONAIRE "Naturally Yours" by Varsity-Town Clothes

Our "Madisonaire" by Varsity-Town is an authentic NATURAL SHOULDER suit. But it is not, in any sense, extreme. It has narrow lapels... but not disappearing ones. It has straight lines... but not skin-tight ones. It has plain-front trousers. But they are not snug trousers. They fit when you stand... they fit when you sit. In short, "Madisonaire" has always been the most comfortable suit as far as fashion... which is why it has long been called "the finest expression of the natural shoulder suit". We suggest you prove it to your delight, soon.

\$59.50

H. Kositchek Bros. LANSING

Nippon Student Talks Of Art, Research, Tea

Green tea, Japanese art, philosophy and research are all part of the busy college life of Yasuyuki Yamada, Japanese scholar and artist, who came to the United States on a Fulbright Scholarship and under the U.S. Atomic Energy Commission. His work for the commission includes research on the total absorption of nutrients, and is done with horticulture professors Marvin Dubovac and Sylvia Wittwer.

Yamada spent seven years studying literature in Japan, and received his degree from Kyoto University.

"Traditional Japanese art deals with the painting of leaves, flowers, birds and the moon," he said. This technique was first used by the Chinese to produce the desired effect. Yamada prefers to paint bamboo stalks and iris flowers.

Yamada spent eight years under the instruction of his father, a professional artist, perfecting his hobby. At least twice a week he finds time, in his room at Owen Graduate Center, to practice his art.

While indulging in another oriental custom, smoking his own Japanese green tea, Yamada discussed the total international situation. He said that as a re-

sult of World War II "Japan and the United States should be closer for many reasons not only economic and political."

Yamada commented on the excellent economy in the U.S. and the importance of not letting the athletic buildings dominate the academic ones, however.

He believes in cultivating friendships as well as plants. His code for international peace is "to help one another and have individual friendships."

Coming Events

- German Club—7:30, 34 Union
- History Club—7:30, 31 Union
- ASU! French Club—7:30, 33 Union
- Humanity Society—8 p.m., Union Tower, Room 101
- Forestry Seminar—10 a.m., 27 Forestry
- Ecology Discussion Group—10:30, 480 Nat. Sci.
- Physiology and Pharmacology Seminar—4 p.m., 218 Gilmer
- Psychology Colloquium—4 p.m., Forestry Cabin
- Biochemistry Colloquium—4:10, 122 Kedzie Chem. Lab.
- Farm Crops Seminar—4:15, 409 Ag. Hall
- University College Colloquium—7:30, Lincoln Rooms A & B, Kellogg



ARTISTIC HOBBY—Yasuyuki Yamada, Japanese Fulbright scholar doing research at State, spends his spare time performing Japanese brush paintings.

University Service's Dean Combs Has Various Responsibilities

Supervising MSU's library, a lack of space, Combs said. Many of the exhibits are housed under the east stands of the stadium because of the shortage of space in the library building.

William H. Combs, dean of University Services, does all of these jobs, but he attributes most of his success to the department heads and supervisors who handle the everyday details of the departments.

"The library is our biggest operation, and a lot has been done in the last 10 or 15 years to improve the library," Combs said.

On many nights of the week, however, he said students have a hard time finding seats in the library.

One answer to the crowded library conditions would be to make the present library for undergraduates only and build a separate research library for graduate students, Combs said.

Offering library service in the new dorms would also help to correct the crowded conditions, he said.

The museum also suffers from

members to Brazil to train other teachers.

Another department under Combs' supervision is the Lecture-Coincidence Series, which shows foreign films, and Saturday night travelogues, we try to bring in programs of special interest to students," Combs said.

"Our institution has become international in scope, and we ought to get our student body acquainted with as many foreign cultures as possible," he said.

Keeping minutes and preparing materials for the faculties' three governmental bodies is another of Dean Combs' responsibilities.

The Academic Senate meets to pass the Universities' broad educational policies, while the Academic Council acts as the Senate's steering committee. Combs keeps minutes for both of these groups.

For the Council of Deans, he must serve in two capacities. He first represents University Services and also acts as the group's recording secretary.

Over 1600 copies of these min-

utes have to be read at the time the governmental meet.



WILLIAM H. COMBS

Central Placement System Aids Students

The Placement Bureau offers a free service to University seniors and graduate students seeking employment. It also maintains a student employment service.

"The Placement Bureau helps to help graduates become successfully employed," said E. W. Fitzpatrick, assistant director.

Centralized placement system makes it easier for students and employers to contact each other.

Many large universities have a centralized system, making it easy for employers to contact the Placement Bureau.

Weekly group meetings are placed on bulletin boards in the job area, department buildings, and other places to remind stu-

dents to make appointments with employers.

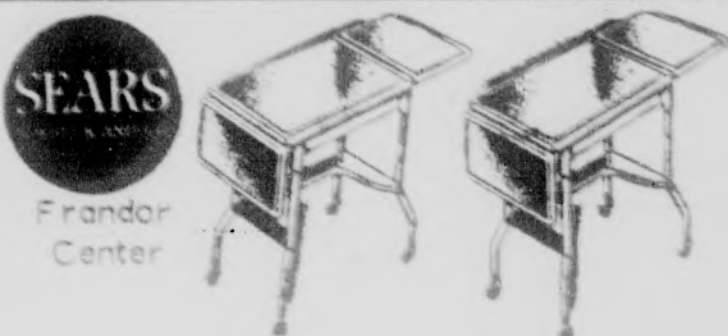
The student arranges an appointment with the Placement Bureau and picks up information about the company. The Placement Bureau then arranges a student interview with the prospective employer.

Job opportunities, ranging from part-time summer jobs to executive positions are submitted to the Placement Bureau by about 1,500 organizations.

Salaries generally depend on qualifications, Fitzpatrick said.

Senior credentials are kept on file for three years after graduation, and an alumni file is kept active for six months.

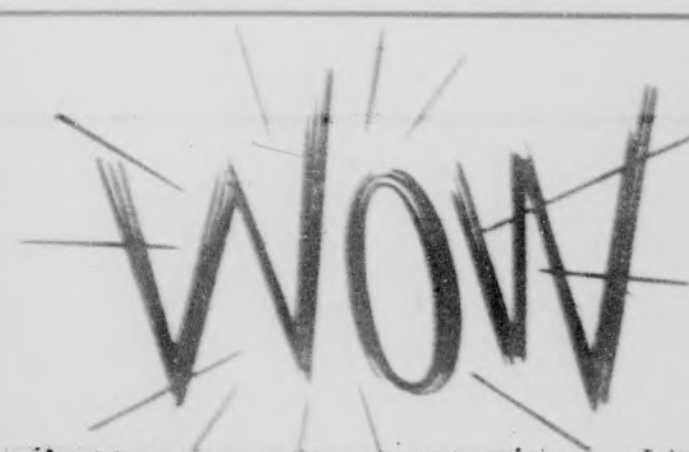
"The Placement Bureau helps the student to learn of other employment possibilities besides the ones he may already be familiar with," Fitzpatrick said.



Terrific Buy, Our \$6⁹⁵ Steel Typing Table

Save \$2.96 **3⁹⁹**

A real bargain for your home or office! Sturdy steel with grey enamel finish. Steady typing support. Leaves fold down. Moves on casters, 26 inches high.



TOP POP 45 DISC'S STILL ONLY **69¢**

If you can buy a record cheaper elsewhere - buy it - we won't match the price - but we will guarantee your satisfaction. **MARSHALL MUSIC**
307 East Grand River East Lansing

COME ON IN
the savings are great

PLUS VALUABLE GOLD BOND STAMPS...

SAVE 30¢

ON ANY FLAVOR 1/2 GAL. Regular - Premium or Round - McDonald's

SWIFTNING
WITH COUPON BELOW

3 Lb. Tin 39¢

ICE CREAM
WITH COUPON BELOW

SWIFT'NING 3 Lb. 39¢

With This Coupon and \$5 or More Purchase. Limit One Per Family-Expires Sat., Feb. 23, 1963.

SAVE 30¢ On Any Flavor, Reg. Premium or Round McDONALD'S 1/2 Gal. **ICE CREAM**

With This Coupon and \$5 or More Purchase. Limit One Per Family-Expires Sat., Feb. 23, 1963.

MAXWELL HOUSE COFFEE Lb. 49¢

With This Coupon and \$5 or More Purchase. Limit One Per Family-Expires Sat., Feb. 23, 1963.

THIS COUPON IS WORTH **50 EXTRA GOLD BOND STAMPS** With This Coupon and the Purchase of TWO 1-LB. PKGS. OF NESTLE'S **FIG NEWTONS** Limit One Per Family. Coupon Exp. Sat., Feb. 23, 1963.

THIS COUPON IS WORTH **50 EXTRA GOLD BOND STAMPS** With This Coupon and the Purchase of One Carton **HEATHERWOODS Sour Cream** Limit One Per Family. Coupon Exp. Sat., Feb. 23, 1963.

AT SHOP-RITE YOU GET DOUBLE GOLD BOND STAMPS EVERY WEEK



Spartan Bread
2 For 29¢

With This Coupon and \$5 or More Purchase. Limit One Per Family-Expires Sat., Feb. 23, 1963.

MAXWELL HOUSE COFFEE Lb. 49¢

CAMPBELL'S Tomato Soup Tin 10¢

Campbell's Chicken Noodle-Mushroom-Vegetable Beef

SOUPS 6 For 89¢

CAMPBELL'S - Vegetable - Bean & Bacon

SOUPS 8 For \$1.00

Spartan Frozen Strawberries
3:79¢

FRANCO-AMERICAN - Big Family Size

Spaghetti 6 FOR \$1.00

CAMPBELL'S - New Large Size

Pork & Beans 6 FOR \$1.00

DOLE - 46 oz.

Pineapple Juice 25¢

ALL FLAVORS

JELL-O 3 3-Oz. 25¢

THIS COUPON IS WORTH **100 EXTRA GOLD BOND STAMPS** With This Coupon and the Purchase of \$2.00 or More **Fruits & Vegetables** Limit One Per Family. Coupon Exp. Sat., Feb. 23, 1963.

PORK Sale

First Cuts **Fresh Pork Chops** Lb. 39¢

Loin End **Fresh Pork Roast** Lb. 43¢

Center Rib - Lean **Fresh Pork Chops** Lb. 69¢

Small - Lean **Fresh Pork Spareribs** Lb. 39¢

Sliced Or Chunk **Fresh Pork Liver** Lb. 23¢

Shop-Rite's Own -- Special Made

REGULAR - MILD SEASONED **Pork Sausage** LB. 39¢

Vandenbrinks **HAM** 69¢ Lb.

SHOKED BONELESS WHOLE OR HALF

HEAD LETTUCE 2 HEADS 25¢

ONE 3 LB. BAG **ONIONS** FREE WITH 39¢ PURCHASE OF ONE 3 LB. BAG

THIS COUPON IS WORTH **100 EXTRA GOLD BOND STAMPS** With This Coupon and the Purchase of One 50 COUNT BOTTLE OF **ANACIN** Limit One Per Family. Coupon Exp. Sat., Feb. 23, 1963.

Spartan SHOP RITE SPARTAN SHOPPING CENTER 940 TROWBRIDGE RD. Open 9 a.m. to 9 p.m. Monday thru Friday Saturday to 8 p.m.	Hauer's SHOP RITE 1109 E. GRAND RIVER East Lansing Open 9 a.m. to 9 p.m. Monday thru Friday Saturday 9 a.m. to 8 p.m.	Prince Bros. SHOP RITE 555 E. GRAND RIVER East Lansing Open 9 a.m. to 9 p.m. Monday thru Friday Saturday 9 a.m. to 8 p.m.	PRICES IN THIS AD ARE GOOD AT ALL SHOP RITE MARKETS... 3630 S. GEDAR BY S. CEWA 2401 W. ST. JOSEPH 2301 E. GRAND RIVER 2416 N. EAST ST. LOGAN AT JOLLY RD. We Reserve the Right to Limit Quantities
---	--	--	--