

Men live off-campus, page 6; cattle study may aid TB victims, page 9.



Edited by Students for the Michigan State University Community East Lansing, Michigan Wednesday, February 13, 1963 Price 10c

Variable cloudy, continued cold and possible snow flurries today. High in the mid-20's.

University Moves Fast On Education Project

Fraternity Party Is Accident Clue

Police Investigate Possible Connection With 3 Fatalities

State Police are investigating possible connection between a fraternity party and the accident near south campus early Saturday morning in which three persons, including one student, were killed, and eight persons injured, according to the Dean of Students Office.

Bus Service Cut Planned

Local bus service will be curtailed starting March 1, Lansing City Council was told Monday afternoon by Councilman Curtis A. Baryames, chairman of the group's transportation committee.

UB Jazz Concert To Swing Out

"A Wonderful World of Jazz" will ring out from the Union Ballroom at 7:30 p.m. Wednesday, as Union Board presents the second event of its annual Union Board Week.



BUD SPANGLER

Data To Be Aired Regarding Scheme

University personnel are moving fast on the Educational Development Project set up by the Board of Trustees, Saturday. Officials are planning at least four presentations of material that led to the Board decision, this week.

Judiciary Row May See Censure Motion

The AUSA Political Affairs Committee Tuesday recommended censure of Harvey Elliott, Centerville senior and chief justice of Student Judiciary.

Objects To 'U' For Oakland

Members of the state legislature frowned on the action taken by the Board of Trustees Monday to change the name of MSU-Oakland to "Oakland University."

World News at a Glance

GENEVA--THE Soviet Union and the United States collided Tuesday at the reopening of the 17-nation disarmament conference.



THE WONDROUS MAILMAN--Receiving one of the largest valentines ever stuffed into a mailman's bag, Murren McKittrick, Detroit junior, compares her oversized card with her undersized mailbox.

Variety Of Valentines Sold For Cupid's Day

The whole world loves a lover, especially card salesman on Valentine's Day. Just take a look at the number of Valentines students will be sending to wives, sweethearts and acquaintances this week.

Youth Group For Con-Con

The plans of a statewide Young Citizens for Con-Con group were announced Monday evening by Pete McPherson, MSU graduate student and chairman of the new group.

State Budget To Curb EMU

President Eugene B. Elliott of Eastern Michigan University said Tuesday that approval of Governor Romney's budget would make it impossible for EMU to maintain present levels of operation.

H.S. Students Coming To Compete For Awards

MSU will host a competition of outstanding students from U.S. high schools and American schools from all over the world.

Remain On Critical List

Two roads involved in a fatal accident which killed three youths early Saturday morning were listed in critical condition at Sparrow Hospital late Tuesday afternoon.

Soviet Schools Face Education Crisis

PITTSBURGH (AP)--Russian schools are involved in a serious crisis, according to a report published today.



The girls are working for Art as a result of the Case Hall auction held for Campus Chest.

Soviet -- U.S. Schools Compared

Russians Emphasize Vocational Study. The Russians emphasize vocational study, says Herbert C. Rudman, education professor.

Plane Crashes In Everglades

A plane crashed in the marshy wilderness of the Florida Everglades 43 miles southwest of Miami.

# Hannah's Seven Point Plan: Full Speed Ahead

The Board of Trustees enthusiastically threw its weight behind a stepped-up program to implement President Hannah's seven-point plan at a meeting Saturday.

For example, Gordon A. ... contributed to an educational development committee, which will report to the Trustees by this May or its findings.

Sabbath already has the study in high gear with meetings and presentations scheduled for important University personnel.

Following are the 20 goals of the program with which the development committee will concern itself:

1. To assign our personnel to activities which take fullest advantage of their interests and competencies.
2. To make more faculty time and resources available for research, extension, and scholarly activities.
3. To increase the effectiveness of the agency for the faculty. This instructional center would be staffed by experts in the fields of communication, in the techniques of curriculum development, and in the techniques of effective teaching. These people would be available to work with faculty members individually and in groups.
4. To develop a system for the faculty to carry out a regular evaluation of the effectiveness of their teaching, their research, and their extension activities.
5. To make possible needed increases in faculty benefits.
6. To develop more explicit goals, instructional procedures, and evaluation procedures for each course and each instructor.
7. To identify and develop into courses the classes which can be taught as well as better through distance learning.
8. To identify and develop into courses which can be taught by students through a network of independent study.
9. To identify and develop into courses which can be taught by the student through a network of independent study.
10. To organize the curriculum into the largest possible credit blocks in order to provide a maximum number of courses between studies and teaching, to reduce the number of faculty teaching, to reduce the number of hours of instruction, to reduce the number of hours of operation, to reduce the number of hours of operation.

to be brought together, to minimize the time consumed in movement from class to class, and to simplify all registration and examination procedures.

... and university-wide courses with large enrollment so that the best minds of this country and of the world can be brought to the campus. Modern transportation makes it possible to bring such people here, provided they can have contact with a sufficient number of students to justify the expenditure.

13. To arrange the instructional program that credit hours and hours in class do not have to coincide. For instance, five-credit course might meet only three hours a week.

14. To develop an informational center which will house all kinds of stored information. This center will be open to students so that they may listen to lectures, tapes, and use various kinds of self-instruction materials.

15. To use teaching media wherever they can be helpful.

16. To develop a system of instruction which makes possible larger blocks of faculty time for curricular planning, for the improvement of teaching, and for research.

17. To develop a systematic entrance evaluation so that students can enter at the level of their abilities.

18. To develop a system of appraisal and evaluation so that every student can move as rapidly as his ability and his achievement warrant.

19. To develop a controlling system so that every student has faculty assistance to help him plan his academic experiences and, as needed, for help with his personal problems.

20. To develop a system which intentionally focuses the interests and the abilities of students to direct their own learning.

News pictures of the Nina II, replica of the first balloon that was one of Columbus' fleet, conceived as that not only were Christ and his crew concerned they were not. — Quincy Harshbarger.

... is usually the act of a person who unconsciously opens his mouth when he wishes others would shut theirs. — The Langford (N.D.) Bugle



## Letters To The Editor

### On Predictions, Errors, NSA

To the Editor: A prediction has been made. The next catastrophic event in history is inevitable. On the basis of the acquisition of nuclear armaments, the powers will line up like 1945: the United States and the Soviet Union against Red China and the rest of the world. What do you think?

Jeff Coy  
250 W. Shaw

Editor's note: The way events are moving it looks like the rest of the world against France.

### By Pardon

To the Editor: As a music major, I must object to no less than two very blatant musical errors on the front page of February 8th issue of the State News.

First of all, Professor Steinmetz is not a member of the State Singers, but is, instead, a member of the MSU Men's Glee Club. There are two separate musical groups, and I doubt seriously that either group was very pleased at this State News mix-up; to say nothing of the feelings of the professor himself.

Next, some well-meaning but mis-informed State-Newsers tells us that tickets will go on sale Monday for the concert of the violinist Rudolf Serkin. Dr. Serkin is one of the world's foremost pianists, not violinists, and he would prefer, I'm sure, to be publicized more accurately.

David J. Pino  
1112-F University Village

### Clarifications

To the Editor: Because of the negative flavor of the recent editorial on NSA, several people have asked me to write my side of the story.

I dislike getting into baggies over the merits of NSA and the political issues that often accompany its opposition because I feel that my time would be better spent making NSA work on this campus and letting its accomplishments speak for themselves. Nevertheless, it is part of my duty to inform the campus about NSA, so I would like to correct a few misconceptions in the editorial.

First of all, the editorial is inconsistent. The first half lauds NSA accomplishments at the national and international level, and the second half decimates its local accomplishments.

Of the figure of \$1,000 quoted in the actual amount is closer to \$200,000. The actual amount spent to send delegates to the National Student Congress in the summer where the national and international programs which the editorial lauds are formulated, or at least where the policy decisions which lead to them are made, is \$1,000.

The actual amount that is spent on local projects is impossible to calculate because it is almost totally made up of expenses incurred in publicizing local projects and that cost is absorbed by

student government. The only other expenses are the normal office expenses for paper, stamps, etc. The total for one year could not exceed \$30.

In other words, if the writer of the editorial does indeed believe that "NSA can boast of many admirable projects and services on the national and international level," he must agree that we are getting our full value out of the \$800 a year, because it is spent solely for these projects. Local expenses are so low.

The second gross error that the editorial makes, which could have been avoided if the author had bothered to ask either me or University officials, is that the journal travel service depreciates that of Union Board.

First of all, Union Board only arranges for flights. They refer interested persons to any outside agency to secure rooms.

In addition, to avoid duplication even on this scale, we are concentrating in the areas of independent travel, educational travel and work abroad which are not covered by existing sources.

The third error is one of logic. While admitting the cogency of my argument that the present program has been in operation for only four weeks, the previous nine months being taken up by summer and problems which are purely local and have no bearing

on the worth of NSA, the editorial blandly writes this off in its summation, and as far as the present programs are concerned, merely states that "We are no optimists about their success."

No justification for this pessimism is ever presented. He merely said he was not optimistic.

The only possible valid criticism that could be made of the proposed projects is that they are not worthwhile. The writer did not say this, nor do I think he believes it.

We are glad that the State News "hopes that more people will attempt to find out what NSA is and what it does." We are certainly no help in implementing this hope.

Richard Haller  
NSA Coordinator  
Michigan State University

### Letter Policy

State News welcomes letters from readers. We regret that we are not able to print every letter we receive because of lack of space. When we receive several letters on the same topic, we will print only those which bring up a new point, or we will run excerpts from the letters.

Address letters to Editor, Michigan State News, Student Services Building, Campus.

regal eyewear beauty...

Wallace's Custom-inspired eyeframes are stunningly crafted in the newest of fashion styling, designed to add glamour and compliances - to any costume.

Dr. W. C. JENSEN, Registered Optometrist

**WALLACE OPTICIANS**

3040 Vine (Opposite Frondor) Phone IV 9-2774

also offices downtown at 107 N. Washington, Ph. IV 2-1175

Dr. R. C. Jones Reg. Optometrists

## From Other Campuses

### News And Views

#### Gophers Get Cash For Space Study Center

UNIVERSITY OF MINNESOTA—Formal announcement was made last week by James Webb, chief of the National Aeronautics and Space Administration, of a \$700,000 federal grant to the University for the construction of a space study center.

#### Looks Like Another Common Market

UNIVERSITY OF CALIFORNIA AT BERKELEY—Germany, Italy, as well as France, will have University of California campuses next fall.

#### Rockwell Won't Rock The Wildest Campus

NORTHWESTERN UNIVERSITY—Strong condemnation of the American Nazi leader George Lincoln Rockwell last week at Northwestern.

#### Down With The Alphabetical System

CALIFORNIA STATE POLYTECHNIC COLLEGE—Student Affairs Council has approved a proposal for a senior preferential system in course registration.

#### But Do You Call It Hamsteritis?

MISSISSIPPI STATE COLLEGE—It was reported that 18 hampsters have been hospitalized during the last two weeks with a disease attributed to hamsters.

#### Old World Atmosphere In The U.S. Cornbelt

KANSAS STATE COLLEGE—Two tables where only French and French will be spoken will be set up in the dining room here by the department of languages for students, faculty members and foreign visitors.

#### It's Unanimous! She's The Only One!

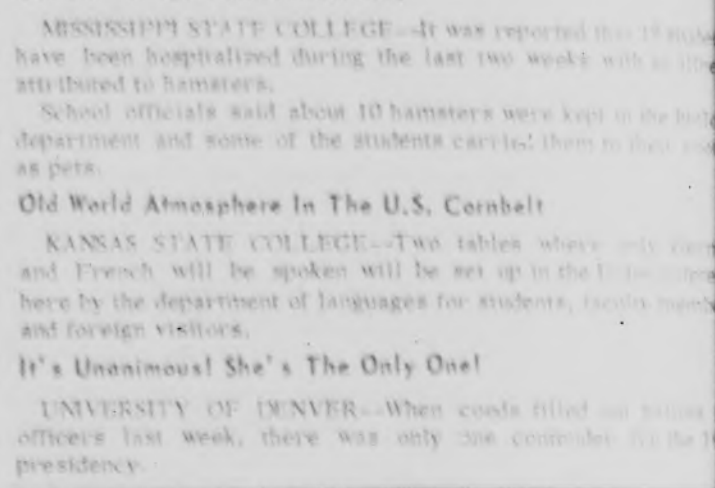
UNIVERSITY OF DENVER—When costs filled out by officers last week, there was only one candidate for the 1963 presidency.

#### Yankee, Go Home, You-All!

UNIVERSITY OF MISSISSIPPI—The campus senate passed resolutions last week calling for troops to leave the campus.

#### Frankly Speaking

By Phil Frost



### CROSSWORD PUZZLE

1	2	3	4	5	6	7	8	9	10
11	12	13	14	15	16	17	18	19	20
21	22	23	24	25	26	27	28	29	30
31	32	33	34	35	36	37	38	39	40
41	42	43	44	45	46	47	48	49	50
51	52	53	54	55	56	57	58	59	60

ACROSS

1. Legal profession
4. Hindu woman's garment
8. Dialect
11. Chiff
12. Mangle
13. Samuel's teacher
14. Electric unit abbr.
15. Chippen-dale furniture
17. Slave
18. Steer
20. Baby's god of war
22. Shore
26. Echoes

DOWN

2. Highest point
3. Requalify
4. Thru; Latin stand
5. Semicolon
6. Dressing gown
7. Prejudice
8. Highest point
9. Requalify
10. Thru; Latin stand
11. Chiff
12. Mangle
13. Samuel's teacher
14. Electric unit abbr.
15. Chippen-dale furniture
17. Slave
18. Steer
20. Baby's god of war
22. Shore
26. Echoes

SOLUTION OF SATURDAY'S PUZZLE

**MICHIGAN STATE NEWS**  
FACEWAKE NEWS PAPER

Member: Associated Press, United Press International, Inland Daily Press Association, Associated College Press Association, Michigan Press Association.

Published by the students of Michigan State University, issued on class days Monday through Friday during the fall, winter and spring semesters.

Editor: Ben Sullivan  
Advertising Manager: Fred Letwin  
City Editor: Bruce Fairbank  
Sports Editor: Dave Harlan  
Photo Editor: Skip Mays  
Asst. Eds.: Frank Senger Jr.

Editorial and business offices at 341 Student Services Building, Michigan State University, East Lansing, Michigan. Mail subscriptions payable in advance: 1 term, \$3; 2 terms, \$6; 3 terms, \$9; full year, \$6.

Business Manager: Bill Marshall  
Copy Editor: Jon Fitzgerald  
Assistant City Editor: Eric Filson  
Editorial Page Editors: Sally Derrickson and Paul Schmitt  
Feature Editor: Jackie Kerona  
Night Editor: Lee Brown

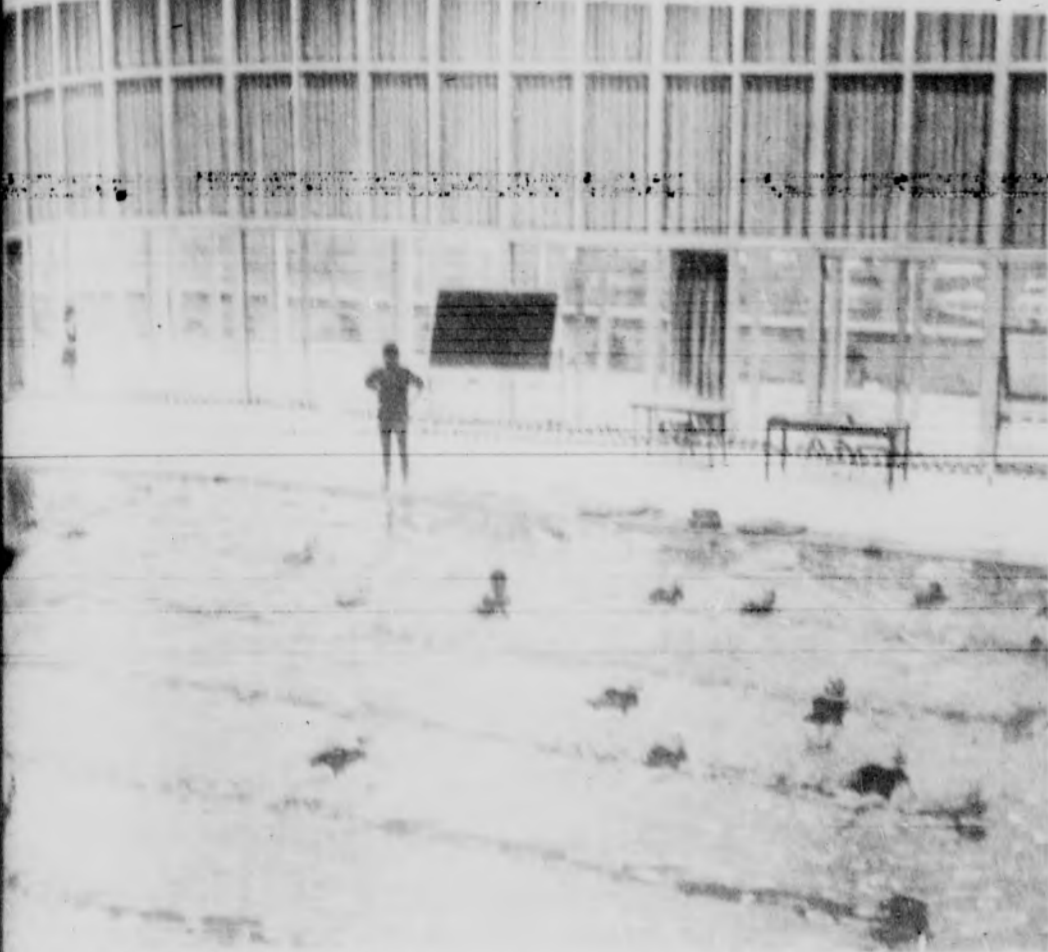
MSU Pools Outstanding

MSU Pools Outstanding

temperatures currently below the freezing mark... will enjoy summer's... of the four in-... campus...

The new women's pool was built in 1959 and overlooks the Red Cedar. Women's class instructions are given there as well as women's competitive meets.

It has a permanent bubble machine to enable divers to see the surface of the water from the diving board. Heated decks allow swimmers to enjoy the sun of the water.



NO ICE—That's right Phoebe, the pool in Women's IM doesn't freeze. It's the Red Cedar, and everyone in this swimming class knows it. Built in 1959, the pool's as warm as bath water.

Barn Goes; Moo U. Era Ends

The Cow College is losing the last of its name-giving status. The razing of the last on-campus barn marks the end of an era for Moo U.

Bids for removing the barn located immediately south of the Engineering building were received Feb. 5.

Phillip J. May, treasurer of the University, said this was part of the program for revamping the campus.

The administration will repay the department of animal husbandry for the barn, Jacob A. Hofer, professor of animal husbandry, said Tuesday.

The department and the state cattle industry were an estimated \$100,000 when the barn was razed.

An appropriation from the state legislature is hoped for to facilitate expanded operations, Hofer said.

The old barn, in use until last fall, was used at one time for sheep research but more recently for feed experiments on beef cattle.

The program will be "more or less on dry ice" until a new facility is available, said Thomas K. Cowden, dean of the College of Agriculture.

Change Of Major Permits Available

Students planning to change majors are encouraged to make changes between now and examination week.

The registrar's office has completed distribution of permits to register to all dean's offices. Permits are needed to change major and can be picked up at the dean's office of the student's present college.



SOON TO GO—South campus will no longer enjoy barnyard smells and shade when this barn, last of the class-building barns, is torn down. Bids for removing the barn, located immediately south of the Engineering building, were received Feb. 5.

Horton Says Reunification Possible

Syria Favors Modified UAR

"To the Arab countries, unity is paramount because it will enable them to face other nations on an equal basis," Alan W. Horton of the American Universities field staff said at the Men's Club luncheon Tuesday.

"Why should Syria have thought of joining with Egypt in the United Arab Republic in 1958?" asked Horton. "They both adhere to nationalism."

"They are united economically, not politically or socially," he said.

Both countries have a landed elite and a wide gap between rich and poor, Horton commented.

"Egypt is a narrow strip along the Nile," said Horton. "Farms must be irrigated. To do this ef-

ficiently, Egypt has a centuries-old bureaucracy to centralize control of agriculture and irrigation canals."

"In Syria there is no need for irrigation. They have more land and abundant rainfall," he said. "There, the basic target for power seekers is to grab land, not government as in Egypt."

"Egypt has the most educated people of the Arab countries, but no natural resources and little land," Horton said. "Syria has much land but still opening new lands. She has a healthy economy without industry."

He said the Egyptians have a stability due to their administrative ability. The Syrians admire this strength because many political

frictions in control of the Syrian Army and the military in 1958. Syrian governments, but don't stop in and organize the affairs of state."

"Because of a fear of a Communist take-over and a basic desire for Arab unity, a Syrian delegation came to Nassar in 1958 to negotiate for unity," said Horton. "The union took place. Syria, of every walk of life, shared Nassar, the new Arab leader."

"However, soon stresses developed. There was a reaction of the big Syrian landowners who had much to lose if their holdings went to Nassar," he said.

"In this the long struggle followed the union, the police were strengthened and the union broke down between the Egyptian

and the Syrians who thought they were losing their sovereignty," he said.

"This led to a brilliant coup led by a Syrian in 1961. Syrian generals took over the government from Egypt in a sweeping movement," Horton said.

"The present Syrian government wants a new kind of union with Egypt with more respect for the Syrian personality," he said.

"Nassar has been the most successful in contacting Western or Soviet attempts to tell Arabs what to do. Egypt is the outline the other Arab countries must look up to and unite with to achieve their future Arab nation."

Supply Truck Rocket Ready By 1980 Says Engineer

"Supply truck" rocket design is expected to be the first example of the new 18-wheel vehicle to be completed in 1980. The design systems program is the Missile and Rocket Development Program of the General Motors Corp., directed by George W. Brown, chief of the rocket engineering college seminar.

Les Elgart Band To Spin Spinsters

"Celestia," the 1963 annual Spinster's Spin will feature Les Elgart's Band Feb. 23 in the Aul. The women's choice dance will climax with the opening of Mr. MSU for 1963. It is semi-formal and is sponsored by Tower Guard, Spartan Women's League and Associated Women Students. In line with Spinster's tradition, coats are expected to do the driving, make their date's corsages, and pay all bills. Tickets are on sale at the Union ticket desk for \$4 per couple.

Advertisement for Jacobson's handkerchiefs. Includes text: 'cupid's choice for your valentine lovely feminine handkerchiefs designed especially for valentine giving with gay hearts and love birds. All cotton with hand rolled hems. Box of 2/1.00 Others at 1.00 each.' Features an illustration of a cupid and a box of handkerchiefs.

Advertisement for Jacobson's clothing. Includes text: 'SPECIAL! TOTS' COLOR-MATED COORDINATES. KNIT SHIRT 1.44 CORDUROY OVERALL 2.44. For boys, an excellent buy! Red, blue, olive or brown corduroy overalls with adjustable straps and side tabs. White cotton waffle knit shirt, embroidered motif. Sizes 2 to 4, not all sizes in all colors.' Features an illustration of a boy in overalls.

Advertisement for Ski Club Meeting. Text: 'Ski Club Meeting Tonight At 7:30 UNION BALLROOM INFO ON NUBS NOB SKI TRIP'

Advertisement for Patrician Hair Fashions and Pink Room. Text: 'Patrician Hair Fashions and the NEW Patrician Pink Room. Two locations for your convenience. COED SPECIAL. Includes shampoo, styling, set. Patrician Pink Room Open Tuesday - Friday until 8 p.m. No Appointment Necessary. E. Lansing, E. Grand River Rd. ED 7-1114'

Advertisement for Banlon Knit Shirts. Text: 'FULL FASHIONED BANLON KNIT SHIRTS \$5. An exciting opportunity to prepare for spring with 100% texturized nylon knit shirts at a truly low price. All the styling and comfort you demand: raglan sleeve, ribbed cuff and bottom, fashion collar. In spring shades of white, black, red, French blue, sage, beige or oatmeal. S, M, L, XL. Includes illustration of a man in a knit shirt and Jacobson's logo.

Advertisement for Hand-sewn Tasseled or Italian-style Calf Loafers. Text: 'SALE! HAND-SEWN TASSELED OR ITALIAN-STYLE CALF LOAFERS 5.88 Regularly 7.98. Save now on hand-sewn calf casuals by Young-Timers... flexible sport clean-cut lines and comfort-in-action. You'll wear either style, tasseled or classic, endlessly through the seasons. Black or brown. Includes illustration of a loafer and Jacobson's logo.

Michigan State News, East Lansing, Michigan

# Cage Coach's Interest Split With Recruiting

By JOHN VAN GIESEN  
Of The State News

Spencer basketball coach Paul Anderson is a man whose attention is divided these days. His team will play six games left on its schedule and they will require much of his attention. But he also must devote considerable time to the problem of recruiting high school basketball players for future years.

After a day of rest for illness, the basketball team resumed practice sessions Tuesday. The coaches went through a full workout in preparation for this week's schedule.

Anderson's job is divided between the basketball team and the recruiting effort. He will be the first coach to visit the University of Michigan campus in the near future.

travels aren't paid for by the basketball budget and money for expenses incurred in recruiting comes out of the coaching staff's own pockets.

The hardest type of basketball player to recruit, according to Anderson, is the big tall man. He said that most of them are offered scholarships or bursaries.

Anderson also originally built his team from scratch. He has recruited players from all over the state and has a good record in the Big Ten.

## Intramural News

- Basketball Schedule**  
Gym II-3  
6 Sharp Shooters - Hawkeyes  
7 Net Breakers - Green Bands  
8 Bailey 1-3  
9 Evans Scholars - VII  
Gym II-4  
6 Coll. of Ed. - AY-1  
7 Trophy Takers - Ecker Devils  
8 Dead Beats - Red Skins  
9 W. Shaw 2-4  
Gym III-5  
6 Gamma Delta - Pullbearers  
7 CCC - Bacon's Buns  
8 Rebel Mascot - Meix  
9 Personal - Cherry Pickers  
Gym III-6  
6 Kestrels - Deltas  
7 Martini Ball - SOC II  
8 St. George - Slipsticks  
9 Falcone - Logical Empiricists

- Ice Hockey Schedule**  
10-11 Wilson-Dean Thru 11  
12-13 Wilson-Dean Thru 12  
14-15 Wilson-Dean Thru 13  
16-17 Wilson-Dean Thru 14  
18-19 Wilson-Dean Thru 15  
20-21 Wilson-Dean Thru 16  
22-23 Wilson-Dean Thru 17  
24-25 Wilson-Dean Thru 18  
26-27 Wilson-Dean Thru 19  
28-29 Wilson-Dean Thru 20  
30-31 Wilson-Dean Thru 21

Badgers Block Illini Title Path, 84-77

# Expert Lunge Is Key For Spartan Foilsman

By RICHARD SCHWARTZ  
Of The State News

Behind every good fencer is a good lunge. This simple but proven fact has been the key to a successful Spartan career for fencer Dick Schloemer.

With three years of experience behind him, Dick is on his way toward becoming one of the outstanding fencers on MSU's strip.

Dick is always working on technique and is never satisfied with himself. He's well coordinated and can master most anything.

sessions against a single setback. Three of these decisions came at the expense of the defending conference champion.

Freshmen practice for the MSU fencing team will be at 7 p.m. tonight in the Men's IM.

"I entered the IM fencing tournament at Schmitter's advice," said Schloemer. "Upon finishing second, the coach told me on the idea of an individual sport and I've never regretted my decision since then."

was a 5-4 victory over... season and placed sixth in the Big Ten championships. The following year brought even greater fortune for Schloemer with a first place berth in the championship and a 2-1 record in dual meet competition.

Schmitter figures Schloemer to be the top Big Ten contender in foil this year. Dick also has high aspirations, which account for another characteristic of his personality—confidence.

"Although Dick was never a serious contender in any score, without confidence in his own ability, Dick would have been an easy bait."

### Big Ten Basketball Standings

CONFERENCE	W	L	PCT	PTS	FG	FT
Illinois	11	2	.846	1477	279	279
Ohio State	10	3	.769	1323	254	254
Michigan	9	4	.692	1179	232	232
Indiana	8	5	.615	1094	218	218
Iowa	7	6	.538	1039	207	207
Wisconsin	6	7	.462	1032	203	203
MICHIGAN STATE	5	8	.385	1007	197	197
Nebraska	4	9	.308	922	182	182

Tadlock speaking... enjoy safe winter driving.

**FRONT END Alignment and Wheel Balance**

Our Experts Do All This — For Only **\$7.77**

\*Correct Tires \*Correct Camber \*Correct Caster \*Adjust Steering \*Plus Full Safety-Check \*Balance 2 Front Wheels

**GENERAL TIRE SERVICE CO.** Chick Tadlock, Gen. Mgr.

## Central Intelligence Agency

An Agency Representative will interview undergraduate Seniors and graduate students who terminate their studies in June, August, or September 1963 for employment by our Agency during the dates of 20, 21, and 22 Feb. 63 on Campus.

Please consult the Placement Bureau, Student Services Building, for information concerning these positions and to schedule an appointment. A careful review of the information on file in the Library of the Placement Bureau is an essential requisite prior to scheduling an interview.

all advertising media are good but...  
**Only The Daily Newspaper**

1. enables you to tell the full story
2. provides a friendly atmosphere
3. offers you complete flexibility
4. offers your messages believability

place the largest part of your budget with the selling medium

# THE DAILY NEWSPAPER

Michigan State University Community completely is the...

**MICHIGAN STATE UNIVERSITY STATE NEWS**

## WANTED: interviews with students capable of taking on substantial responsibility early

**Lazarus**  
ESTABLISHED 1851

Largest Department Store in Ohio  
AND A DIVISION OF FEDERATED DEPARTMENT STORES, INC.

Will Interview on Campus

TUESDAY, FEBRUARY 20  
WEDNESDAY, FEBRUARY 27  
at the PLACEMENT OFFICE

Lazarus offers rapid advancement and exceptional financial opportunity for capable young men and women. Quality training, imagination, The Lazarus training method puts trainees, early, into decision-making positions so that they can prepare themselves for executive responsibility.

Interviews for these fields of interest:

- restaurant management
- sales promotion
- finance
- personnel

# Wrestlers Take On Two Foes

By RON SOLOVE  
Of The State News

A wild weekend in store for the Spartan grapplers. Home matches against Indiana on Friday and Michigan State on Saturday provide plenty of action for Coach Grady Peninger's matmen.

MSU wrestlers need both victories to push their home record over the .500 mark. The Spartans dropped matches to both Oklahoma and Pittsburgh, while defeating State College of Iowa.

defeated Illinois at Champaign, 14-11. The Spartans now stand 4-2 overall.

Iowa sends a highly-touted squad to face the Spartans. Last year's Big Ten champs, the Spartans, were defeated by Iowa 15-13 and would like nothing better than to repeat the upset Saturday.

Iowa sports strong performers in at least three weight classes. They include lettermen Norm Parker (130), Tom Huff (137) and Steve Conner (167). Peninger says the match will be "a rip-roarer."

Indiana brings a 2-3 dual meet record and Dick Isel, unbeaten 177-pound sophomore, to East Lansing. Isel will face State's once-beaten Alex Valcanoff in what promises to be one of the Spartans' toughest matches in Conference dual meets.

Peninger has suspended tryout matches for the week in order to devote practice time to condition for the busy weekend.

battled the Hoosiers to a 14-14 draw. The Indiana matmen posted a 4-7-2 season record and finished seventh in the Big Ten.

Peninger has suspended tryout matches for the week in order to devote practice time to condition for the busy weekend.

Making weight for the two consecutive matches may present a problem. A gallon of water weighs eight pounds and wrestlers are usually very thirsty following a match.

Both matches will start at 3 p.m. in the IM Sports Arena.



IT BACK TO THE INDIANS—After the 1st dirt arena here is the scene of the 1st session of the Michigan State Lacrosse Club. Lacrosse is an old Indian game.

that is played in the east, especially in Maryland. The club has scheduled the first intercollegiate lacrosse games MSU has ever taken part in.

## Banker Hopes Rest Of Basketball On Bench Strength Up The River

Bill Driver's performances in the basketball have also been an asset to the team. In the Minnesota meet, Driver reached his season's peak in the race against Virg Lukes, NCAA champion last year. Lukes was unable to take the lead from Driver until the last 10 yards.

Neil Watts, Dennis Collins and Bill Rossow have all made significant advancements in recent weeks. They are key men in the 500-yard freestyle and against the boys' relay.

Driver's most looks like a battle between the two squads. It is going to be a performance of the year.

Driver's most looks like a battle between the two squads. It is going to be a performance of the year.

## Master Fixer Of Basketball Up The River

New York (UPI)—Joe Lapchick warned his fellow college basketball coaches Tuesday not to relax their vigilance "just because Jack Molinas is going to jail."

Molinas, a former Columbia University and professional star, was a practicing attorney at the time of his arrest but later was disbarred.

### Buntin Shoots For Honors

ANN ARBOR (UPI)—Michigan center Bill Buntin has established himself as a good bet to be sophomore player of the year in the Big Ten basketball race. The 6-7 (160) prep prodigy is scoring well over 20 points a game and is the leading rebounder in the conference.

### Howe Tied For Lead

MONTREAL (UPI)—Five-time champion Gordie Howe of Detroit has moved into a first place tie with Boston's Johnny Bucyk with 50 points each in the National Hockey League's individual scoring race.

Howe had 27 goals and 29 assists in games played through Sunday compared to Bucyk's 22-34 scoring effort. Montreal's Jean Beliveau was just one point behind and he led league in assists with 42.

Three Players — Toronto's Frank Mahovlich, Boston's Murray Oliver and Stan Mikita of the Chicago Black Hawks—were bunched in fourth place with 34 points each in one of the tightest NHL scoring races in years.

### Ford "Fit As A Fiddle"

MONROE, N.C. (UPI)—Whitney Ford, the soft-spoken southpaw of the New York Yankees, says he's in good shape and ready to make another attempt at breaking the 20-game barrier, a goal he's been able to achieve only once in 14 seasons.

Ford, feeling "fit as a fiddle," told newsmen Tuesday that his arm "never felt better" and he hoped to pitch 200 innings this season. This would be about 35 more innings than he pitched in 1961 when he capped his "best year" with the Yankees with a 25-4 record.

**SPARTAN SPECIAL**  
ALL DAY WEDNESDAY AT  
**Howard Johnson's**  
IN FRANDOR  
Fresh Lake Perch All You Can Eat  
For \$1.19  
Served with French Fries, Creamy Cold Slaw,  
Tartar Sauce, Fresh Rolls & Butter.

**The Winning Sorority**  
This Week  
**Delta, Delta, Delta**



**The Winning Girl**  
Cris Scarsons  
THE CLOCK IS AGAIN TICKING  
Be watching next week for another surprize.

M.A.C. At  
Albert  
332-3505

## Gov. Pledges Support For '68 Olympics

Gov. George Romney Tuesday said the state of California and its Governor, Pat Brown, are trying to "rob" Detroit of its bid for the 1968 Olympic Games.

He pledged to do everything he can to thwart the West Coast campaign, which aims to have Detroit replaced by Los Angeles.

He said Detroit's chances of landing the Olympics may be in peril as a result of the Los Angeles program.

"Obviously, any city can be in a stronger position for the games if it isn't being challenged from within its own country," Romney said.

Detroit has been designated, for the third time, as the choice of the U.S. Olympic Committee when it makes its appeal for the 1968 Olympic Games to be held in the United States.

Los Angeles was host to the 1932 games and already has facilities.

Romney said he will call a meeting of key persons involved in Detroit's planning for the Olympics. He has named Richard McManus, a Birmingham civil engineer, as his own representative to the Olympic effort.

The Governor said he will make a personal appeal to the International Olympic Committee if necessary.

## Bearcats, Loyola Dominate Top 10

NEW YORK (UPI)—Cincinnati's unbeaten Bearcats topped the United Press International college basketball poll for the 11th straight week Tuesday with only three weeks left before the crowning of the national champion.

The Bearcats, who extended their season streak to 19 and their over-lapping victory skid to 37 games, again were named the No. 1 team by all 38 members of the UPI rating board. This marked the eighth week in a row that they had received a perfect score of 350 points in the ratings.

Loyola of Chicago, which has won all 20 of its games this season, once again was second, receiving that designation this week by 32 coaches. The Ramblers have six games left to play in the regular season, one more than the Bearcats, but both finish up on March 2.

Duke, the Atlantic Coast Conference leader with a 17-2 record, was third, while Illinois, bidding for the Big Ten title with an overall record of 17-3, remained fourth, and Arizona State University, which tops the Western Athletic Conference and owns an 18-2 record, held onto fifth place.

There was a bit of shuffling in the lower half of the Top 10 this week with Colorado (13-4) moving up from seventh to sixth, and Mississippi State (11-5) dropping from ninth to tenth.

Stanford (13-5) remained eighth, Georgia Tech (17-3) slipped from sixth to ninth and Oregon State (13-5) clung to 10th.

Cincinnati proved its resourcefulness by beating Missouri Valley Conference rival Bradley, 25-61, in the last minute Saturday night to keep its streak alive. Bradley is the last team to beat the Bearcats—back in January 1962 at Peoria, Ill., in overtime. Loyola was late because of mid-year examinations.

The vote for the first five teams this week was so top-heavy that St. Joseph's (Pa.) managed to make the top 20 with just five points. Points are awarded on a basis of 10-9-8-7-6-5-4-3-2-1 for votes from first through 10th places.

Utah State headed the second 10 grouping, missing the first 10 by just 11 points. Ohio State, the national champion in the past two seasons, advanced from 14th to 12th and was followed in order by Texas, the Southwest Conference leader, UCLA, Oklahoma State, Colorado State, Wichita, Bradley, N.Y., and St. Joseph's.

**new AUTO PARTS used**

Rebuilt Motors  
Rebuilt Transmissions  
Speed Equipment

INSTALLED

DISCOUNTS TO STUDENTS AND FACULTY

**KAMIN'S AUTO PARTS**  
526 N. LARCH  
IV 4-4596

Hours: Mon-Fri 8-6 Sat 8-5 - Sun 9-1

**GENUINE HOOKA**  
(Turkish Water Pipe)

Cools every puff of smoke as it bubbles thru water (or flavored brandy) — filters out tars and nicotine. Tradition famed for centuries. Green glass capsule. Genuine briar bowl, 12" high, with 27" long smoke hose. Full money back guarantee.

Send to:  
**HOKAS,**  
P.O. Box 4630,  
Oak Park, Ill.  
**ONLY \$3.75 each**

**THIS WEEK ONLY:**  
MEN'S AND WOMEN'S  
**SLACKS 2 For 99¢**  
REGULAR 75¢ EACH  
SAT FEB. 16, 1963 LAST DAY  
Cleaned And Pressed By Expert Professionals

**Flash**  
DRY CLEANERS  
and  
SHIRT LAUNDERERS  
FRANDOR CENTER

**COIN-OP COUPON**  
SAVE 50¢  
Coin-Op Dry Cleaning  
Reg 8lb Load...\$2.00  
WITH THIS COUPON  
ONLY...\$1.50  
THIS COUPON EXPIRES FEB. 16, 1963  
FLASH CLEANERS

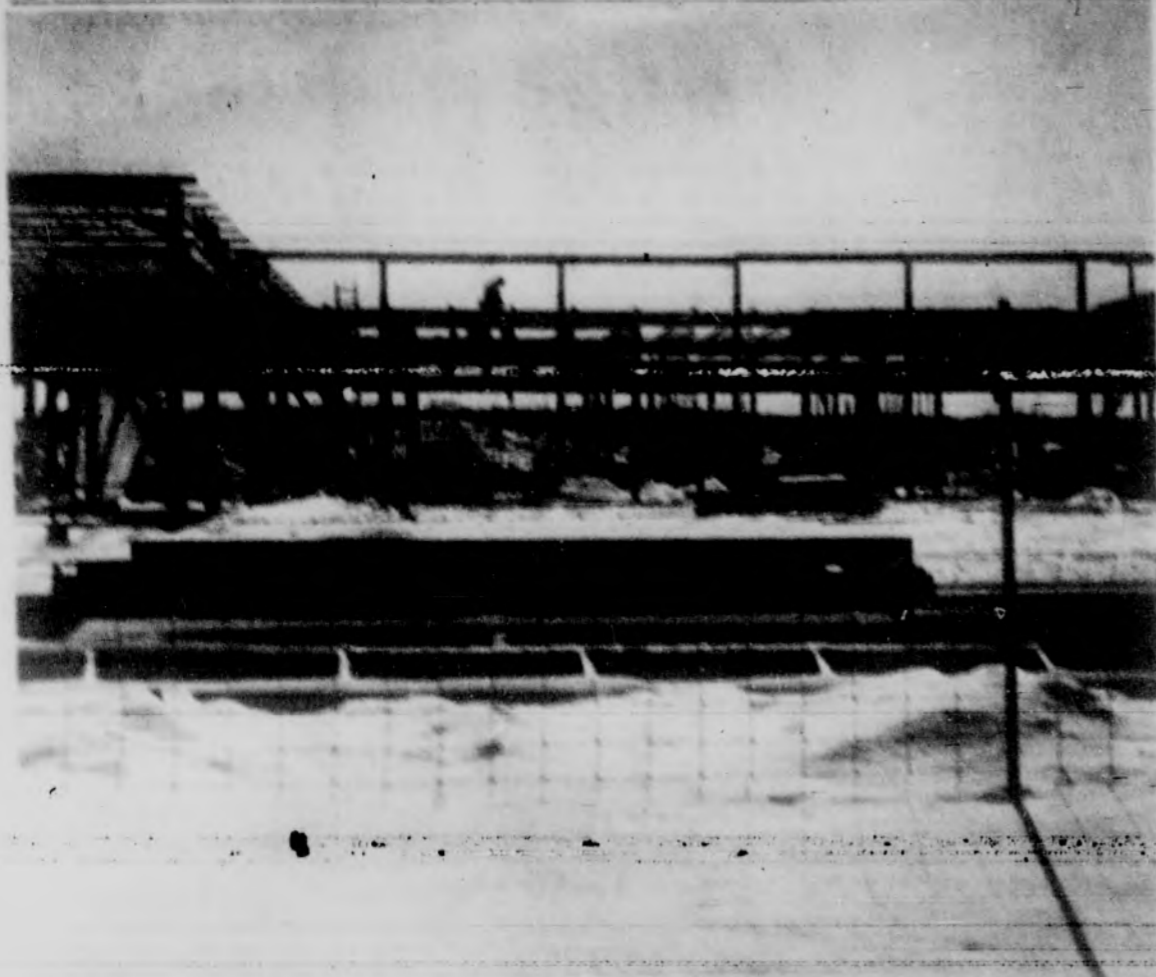
**V-DAY SALE**

**TOMORROW IS THE DAY TO Please That Special Person With Gifts From SPARTAN BOOKSTORE**

May We Suggest Several Valentine's Day Books That Make Extra-Special Gifts:

The Prophet \$3.50	Love is a Special Way of Feeling \$1.75
Who Likes You \$1.75	\$1.00
Shakespeare Sonnets \$1.00	Mark Twain Wit & Wisecracks \$1.00

**SPARTAN Bookstore**  
CORNER MAC & ANN EAST LANSING



SKELETON—As the base was the Engineering building is seen to come down, the Excelsior building is shaping up. This steel

skeleton previews the size and shape of the new structure. State News Photo by Skip Moss

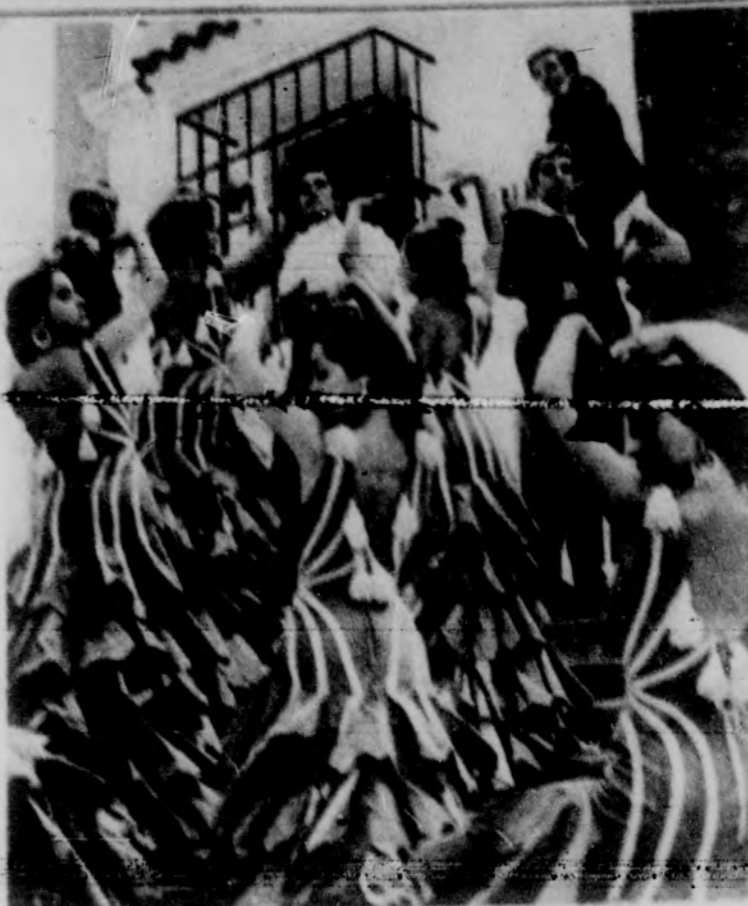
### Delegates Named To Conference

United Nations Conference Feb. 21-24, at Georgetown University, Washington, D. C., were selected Monday on the basis of their background on African affairs.

Student government scholars were awarded to Robin Ruhl, Birmingham sophomore; Kathleen Simmons, Maynard, Mass., junior; Michael Sachatck, Albion, junior; and Susan Merritt, Huntington Woods, senior.

Others chosen to represent Michigan are Robert G. Meyer, East Lansing, senior; Barbara Rall, East Lansing, senior.

The group will leave Feb. 20 and will be hosted by the Nigerian Embassy when they arrive in Washington.



OLEI—Roberto Iglesias (top of stairs in hat and white jacket) and his ballet company will appear on the L-C Series at 8:15 p.m. in the Aud. They will present flamenco and other traditional Spanish dances.

### Iglesias To Perform In Spanish Ballet

Flashing heels, fiery eyes and shouts of "OLE!" will be heard in the Aud. tonight at 8:15 as Roberto Iglesias and his Spanish Ballet company perform in the Lecture-Concert Series.

Iglesias, star and choreographer of the company, was involved in dance ever since an accident in the bull ring when he was a young man.

The Guatemalan boy and some friends were entranced by the excitement and thrill of bullfighting. So, they bought a bull and began practicing on their own. One day, young Iglesias was gored.

During his slow recovery, a doctor suggested dancing as a means of rebuilding his strength. Since then Roberto Iglesias has become one of the most well-known Spanish dancers in the world, and his company is currently making its fourth tour of this country.

Iglesias' form of dance is one of the oldest in existence, dating from 850 B.C. Through the centuries, the dance became an integral part of Spanish life, and enters even into the Church activities.

The character of the Spanish dance lies in the carriage of the head, torso and arms and in the projection of the dancer's emotional expression.

Along with the furious pace the dance goes the fancy footwork, called "zapateo," consisting of the heel-tap, the striking of the heel on the floor, the full sole make up the basic sounds.

Sharp clicking castanets and the rhythms of the Spanish dance. These instruments are as well as expensive, said Iglesias. The one for the right hand must be tuned one-third of a tone higher than the one for the left.

The variety of Iglesias' programs makes up a kind of flamenco, ranging from traditional flamenco and pasodoble dances to modern, abstract, and classic Spanish dance.

Tickets for this evening's performance may be obtained at Union Ticket Office.

Also available at the Ticket Office are student discount tickets for Thursday's performance by the Bharatiya Kala Kendra of North India, a program of Indian Kathak dance and music.

### Food, Overcrowding Cited

## 20% Of MSU Men Live Off-Campus

Twenty per cent of MSU men live off-campus housing, including 1,021 in independent housing and 1,271 in apartment housing, Dick Smith, director of off-campus housing, said.

He said that the per cent of students living off-campus has increased fairly constant over the past few years.

Why do these students live off-campus?

### Musicians Fete Newcomers Club

A musical fete for the Newcomers Club will be held at 8 p.m. in the Union Ticket Office.

The program will feature a variety of musical acts, including a band and a vocal group.

Students are invited to attend and enjoy the music.

For more information, contact the Union Ticket Office.

### Travelogue Film Spotlights Balkans

A travelogue film titled "The Balkans" will be shown in the Union Ticket Office.

The film shows the beauty and culture of the Balkan region.

Students are invited to attend and enjoy the film.

### Folk Music Club To Meet Thursday

The Folk Music Club will meet on Thursday at 8 p.m. in the Union Ticket Office.

The club will feature a variety of folk music acts.

Students are invited to attend and enjoy the music.

### Commandant Visits AFROTC

The AFROTC Commandant will visit the unit on Monday.

The visit is part of a series of visits by the Commandant.

Students are invited to attend and enjoy the visit.

### Interviewers Give Tips To Students

Interviewers will give tips to students on how to prepare for interviews.

The tips will be given during a series of workshops.

Students are invited to attend and enjoy the workshops.

### Placement Bureau

The Placement Bureau will be open for the week of Feb. 11-15.

The bureau will help students find jobs and internships.

Students are invited to visit the bureau for more information.

The bureau will be open from 9 a.m. to 5 p.m.

For more information, contact the Placement Bureau.

The bureau will be open for the week of Feb. 11-15.

The bureau will help students find jobs and internships.

Students are invited to visit the bureau for more information.

The bureau will be open from 9 a.m. to 5 p.m.

For more information, contact the Placement Bureau.

The bureau will be open for the week of Feb. 11-15.

The bureau will help students find jobs and internships.

Students are invited to visit the bureau for more information.

The bureau will be open from 9 a.m. to 5 p.m.

For more information, contact the Placement Bureau.

The bureau will be open for the week of Feb. 11-15.

The bureau will help students find jobs and internships.

Students are invited to visit the bureau for more information.

### Placement Bureau

The Placement Bureau will be open for the week of Feb. 11-15.

The bureau will help students find jobs and internships.

Students are invited to visit the bureau for more information.

The bureau will be open from 9 a.m. to 5 p.m.

For more information, contact the Placement Bureau.

The bureau will be open for the week of Feb. 11-15.

The bureau will help students find jobs and internships.

Students are invited to visit the bureau for more information.

The bureau will be open from 9 a.m. to 5 p.m.

For more information, contact the Placement Bureau.

The bureau will be open for the week of Feb. 11-15.

The bureau will help students find jobs and internships.

Students are invited to visit the bureau for more information.

The bureau will be open from 9 a.m. to 5 p.m.

For more information, contact the Placement Bureau.

The bureau will be open for the week of Feb. 11-15.

The bureau will help students find jobs and internships.

Students are invited to visit the bureau for more information.

### Placement Bureau

The Placement Bureau will be open for the week of Feb. 11-15.

The bureau will help students find jobs and internships.

Students are invited to visit the bureau for more information.

The bureau will be open from 9 a.m. to 5 p.m.

For more information, contact the Placement Bureau.

The bureau will be open for the week of Feb. 11-15.

The bureau will help students find jobs and internships.

Students are invited to visit the bureau for more information.

The bureau will be open from 9 a.m. to 5 p.m.

For more information, contact the Placement Bureau.

The bureau will be open for the week of Feb. 11-15.

The bureau will help students find jobs and internships.

Students are invited to visit the bureau for more information.

The bureau will be open from 9 a.m. to 5 p.m.

For more information, contact the Placement Bureau.

The bureau will be open for the week of Feb. 11-15.

The bureau will help students find jobs and internships.

Students are invited to visit the bureau for more information.

### WIC Schedules Song Fest

Women's Inter-residence Council will hold its annual Inter-R Sing Feb. 24 at Kellogg Center, beginning at 7:30 p.m.

Barbara Davis, Blue Island, Ill., junior and Inter-R Sing publicity chairman, said that 11 women's halls are participating in the program.

The theme of the sing is "Around the World in Song".

Representative of other countries will be featured, Mike Davis said.

Prices range from about \$5 per week for a small room, to over \$500 per month for a house or large apartment.

Gloria Gibson, Washington, D.C., sophomore, will be mistress of ceremonies.

Miss Davis said the sing has several purposes: it fosters dorm pride, provides enjoyment, and serves as an instrument to unify the women's halls.

Participating dormitories are W. Wilson, N. Williams, S. Williams, Snyder, Phillips, and W. Yakeley.

Other women's halls are E. Landon, W. Landon, Butterfield, S. Campbell, and W. Mayes.

### MSU Lecture Concert Series Special

BHARATIYA KALA KENDRA Kathak Dancers and Musicians of North India Mughal Court Dance -- Hindu Dance -- Drama -- Folk Dance

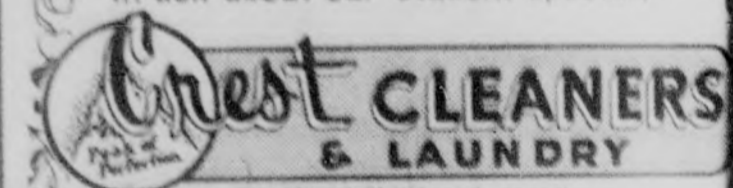
Thurs. - Feb. 14 - 8:15 p.m. UNIVERSITY AUDITORIUM

Reserved Seats: \$2.50; \$2.00 \$1.00 Student Reduction

### Look like a living Valentine



To look your best for your favorite valentine, bring your dry cleaning and laundry to Crest. While you are in ask about our student special.



"The peak of perfection" 620 Michigan Ave. ED 7-0012

A MOST UNUSUAL GIFT...

Portraits in pewter of your hands for Valentine's

A Truly Unique And Individual Gift. These Ornamental Hands Are Sold & Made Exclusively At

**PAIGE CRAFT**

CAPTURE HIS HEART WITH MADRAS

BERMUDAS at \$6.98

SKIRTS \$7.98-\$8.98

SLACKS at \$9.98

BLOUSES at \$6.00

Be His Valentine Every Day In A Wanda Hancock Wardrobe

FOR EXCITING SPRING FASHIONS VISIT...

**WANDA HANCOCK** 226 Abbott Rd. Wed. open 'til 9 p.m.

Want IMMEDIATE INVOLVEMENT in projects of significance?

Many engineering and scientific graduates here that as an objective... achieving it is a reality at UAC's Corporate Systems Center.

CSC was formed to bring together under one management the vast technical resources of United Aircraft (one of the nation's forty largest corporations) and its world-famous divisions. A young, relatively small organization, CSC is engaged in all phases of systems work in areas such as stellar inertial guidance, mobile ballistic missiles, weather technology, bio-science systems, orbital rendezvous and satellite navigation and control.

Rapid expansion in programs provides exceptional advancement potential for capable graduates. CSC's "small company" environment coupled with the stability and benefits of a major corporation provide an ideal climate for your growth.

In the heart of picturesque New England, we are located almost exactly midway between Boston and New York City—only brief parkway hours from each. Investigate CSC career advantages during your visit. If you are unable to see our placement representative during interviews on your campus, write to Mr. R. A. Fuller, Box 1047, Broadstreet Station, Manchester, Connecticut—an equal opportunity employer.

Opportunities for Chemists, Physicists, Biologists, Mathematicians, Civil, Aeronautical, Mechanical, Electrical and Chemical Engineers, Metallurgists, Meteorologists, Oceanographers, Sociologists and others.

**CAMPUS INTERVIEWS: Wednesday, Feb. 20.**

See your College Placement Office for more information and an appointment.

**United Aircraft** CORPORATE SYSTEMS CENTER Windsor Locks, Connecticut

Students, Children And Snowmen

Married Units House 6,000+

By LARA WICHMAN

Students, children and snowmen are the main attractions at the winter, a few snowmen are commonly called housing, three campus houses some 6,000

Students and their families in three villages built at University: Cherry Lane, Village and University

Students are predominantly from the states, although almost as many graduates live in the villages. The manager of married housing, Ray D. Lamphear, said there is an average of 100 children living in the villages.

other things, broken chairs, stopped stinks and faculty stoves. One-bedroom apartments rent for \$100 a month and include the same facilities.

Students living in the apartments are benefitting from the largest married housing department on any campus in the United States, according to Lamphear.

"Our rates are below other schools," he said. "And our rates include the telephone and electricity. Most other schools charge for electricity."

APARTMENTS FURNISHED

Except for faculty dwellings, all apartments are furnished with basic furniture and appliances, and in some cases, with carpets for the living room floor. Faculty housing includes a basic appliances, but normally is unfurnished, Lamphear said.

"Our married housing is a success. It provides a place where married students can live while they go to school. The community might be able to absorb some of the married students, but not the large number of them that come here." But only 18 years ago, MSU



FUTURE SPARTANS?—Some 2,000 children are among the inhabitants of the three campus married housing units. MSU married housing boast 600 more apartments than any other Big Ten school.

did not have a place for married students. Since then, the university has become a pioneer in married housing development.

turning veterans and their families to live, Lamphear said. The first trailer park for students was set up by the government. The park, located in Lansing, had 50 trailers.

city was preparing ground for a trailer park, Lamphear explained. In 1946, the trailers from the Lansing park were brought to the University trailer park and joined 400 other trailers. The University-established park was located where the present parking lot is on the corner of Kalamazoo and Harrison, near the State Police post.

Pinnings And Engagements

Calvinces, New York City Junior and Phi Kappa Sigma. Kendra Van Scriver, Dearborn senior and Pi Beta Phi, to Larry Harding, MSU graduate and Sigma Chi.

Mary Van Zanden, Holland sophomore and Pi Beta Phi, to Jim Winners, Holland sophomore and Sigma Alpha Epsilon. Barbara Watwood, Farmington sophomore, to James Zacklan, Centerline senior.

Beverly Blough, Grand Rapids senior and Alpha Omicron Pi, to Jim Aho, Interlaken, N.Y., junior. Jo Lynne Capps, Mason senior and Alpha Omicron Pi, to Richard Price, Stockbridge.

Honnie Scudder, Grand Blanc senior and Alpha Omicron Pi, to Jim Baker, Elm junior. Janice Smith, Bellevue Junior and Phi Mu, to Dennis Hammon, Milwaukee, Wis., senior.

WAITING LIST LONG "There was a long waiting list for housing. Sometimes people would have to wait for a year before they could get an apartment."

Judy Applequist, Orchard Lake sophomore, to Clifford Soehring, East Williston, N.Y., Junior and Delta Sigma Phi.

ENGAGEMENTS Julie Armarong, Minneapolis, to Tom McCue, Minneapolis Junior and Phi Kappa Sigma. Barbara Bauer, Battle Creek Junior and Phi Mu, to Gary Spry, Wyandotte senior and Phi Mu Alpha.

Joan Friedreich, Grand Rapids Junior and Alpha Omicron Pi, to Thomas Martin, Western Mich. Univ., and Phi Delta Kappa. Pam Hibberd, Mt. Pleasant Junior and Delta Zeta, to David Wilson, U.S. Air Force Academy.

UNIT'S FILLED "Right now we have applications for next spring and fall," he said. "We normally are 100 per cent occupied."

Recognizing the trend, the University prepared to build more permanent housing.

Luanne Browne, Calumet City, Ill., senior, to Lawrence Epstein, Grand Rapids Junior College freshman. Luda Bruggeman, Merced senior, to Karl Ransou, Madison, Wis., senior and Delta Upsilon.

Lynne Burniac, Dearborn, to Walt Krohn, Dearborn senior and Phi Kappa Sigma.

BRUBECK'S NEW BOSSA NOVA U.S.A. 2.98 DISC SHOP OPEN EVENINGS

Don't Forget Your Valentine Tomorrow is Feb. 14 -CANDY- Fanny Farmer - Gramer - Whitmans -FRAGRANCES- Revlon - Coty - Max Factor - Chanel GULLIVER STATE DRUGS

Bridge Provides Player Surprises

By A. R. DRURY

Surprising variations are sometimes possible in the bidding. Last Wednesday at the University Duplicate Club, this hand produced six different final bids and seven different scores.

Two North-South players bid four Hearts. There were also bids of three Hearts, three Diamonds, three Diamonds doubled, three No Trump and two No Trump.

One North player was allowed to make four Hearts. One was set a trick, which is proper. South made his two No Trump, but a North who bid three No Trump was down two. Three Diamonds was made once while the same contract doubled went down one trick, as it should have.

Neither vulnerable. The bidding I would suggest would be:

Hand diagram showing cards for North and South in a bridge game.

\* The 2C bid is Stayman, asking for a 4-card major. I would have opened with 1 No Trump in the South position as we use the Stayman convention seeking the 4-4 fit in a major.

Five Hearts can be run and used to discard a Spade and Club from South. Then the Spade finesse has to be taken, which loses to West, who returns a Club to set that suit. He can not get the lead again.

At 3 Diamonds, East should use a Diamond, a Spade, two Hearts and a Club to set one. The University Duplicate Bridge Club meets each Wednesday evening at 7:30 in the basement of the East Lansing Savings Bank. All interested students may attend these meetings.

Bridge hand diagram showing cards for West and East.

PERCE STRINGS by S.B.S. LEAVE IT TO THE LADIES TO KNOW S.B.S. IS THE BEST PLACE IN TOWN FOR GOOD SERVICE.

from that "Hard To Find" Book -- to that extra special gift for your Valentine Try S.B.S. first The Store Designed With You, The Student, In Mind! Student BOOK STORE Across From Berkey. - Free Parking

PIZZA Open 5 P.M. to 2 A.M. Delivery Service 8:30 P.M. to 1 A.M. Varsity Drive-In ED 2-6517 EXCLUSIVE!!! Just Arrived--- "The Country Shirt" IN Batacos Collar Round Collar Seersucker Many Other Styles This Week Only \$1.00 Off On Any Blouse At The Scotch House Charge ED 7-03

SHE'LL LOVE A Valentine of Flowers Choose From Our Large Selection of Student Specials (Cash and Carry) Azalia Plants \$1.79 up Heart Vase Of Fresh Flowers \$2.98 Cupid Vases With Permanent Flowers And Hearts \$2.98 Ceramic Ladies Heads With Violets And Hearts \$1.89 Ruby Red Brandy Sniffer With Fresh Flower And Hearts \$2.98 \$7.50 NORM KESEL - florist Across From The Union---Phone ED 7-1331 "The Shop Of Distinctive Creations"

The Style Shop for madras Patterned for fun, our gay new group of colorful variety to your wardrobe. Blouses - skirts - jackets - pants. m.a.c. and grand river east lansing



THE MORE YOU TELL - THE QUICKER YOU SELL!

# WANT ADS!

98¢ BIG RESULTS with a low cost WANT AD

- AUTOMOTIVE
- EMPLOYMENT
- FOR SALE
- LOST & FOUND
- PERSONAL
- PEANUTS PERSONAL
- REAL ESTATE
- SERVICE
- TRANSPORTATION
- WANTED

### DEADLINE:

1:00 p.m. each day for the next publication.

### PHONE:

355-8255 or 8256

### RATES:

1 DAY ..... \$1.00  
 3 DAYS ..... \$2.00  
 1 WEEK ..... \$3.00

There will be a 25¢ service charge for each insertion after the first.

### ★ Automotive

**1955 FORD**, 4 door, standard, 8 cylinder, excellent condition. Call 485-2521 after 2 p.m. ED 2-1919. C29

**1957 CHEVROLET**, black, 1 door, 8 cylinder, automatic, 2 door, 8 cylinder, 355-0955 after 2 p.m. ED 2-1919. C29

**1958 FORD**, Country Sedan, 4 door, 8 cylinder, 1952 motor, new battery, excellent condition, 355-0955 after 2 p.m. ED 2-1919. C29

**1958 PLYMOUTH**, 4 door, 8 cylinder, 355-0955 after 2 p.m. ED 2-1919. C29

**1958 PLYMOUTH**, 4 door, 8 cylinder, 355-0955 after 2 p.m. ED 2-1919. C29

### ★ Employment

**BABYSITTER WANTED**, Monday-Friday, 8:15 a.m. to 4:30 p.m. Own transportation. Call 485-7944 after 5 p.m. ED 2-1919. C29

**OPERATING ROOM** nurse position available for 3-11 p.m. shift in 200 bed general hospital. Liberal per diem policies and fringe benefits. Opening also for 3-11 p.m. shift, night receptionist. For application card, call 485-7944 after 5 p.m. ED 2-1919. C29

**DO YOU ENJOY TALKING?** We need several girls for telephone work. Excellent pay and chance for advancement. Must have morning hours free. Apply 541 Stadium Boulevard between 3-12 Wednesday, and from 2 p.m. on Thursday. Ask for Fred. ED 2-1919. C29

**AVON CALLING**, why waste for second best? AVON Representatives sell top quality products. Start now for better earnings. For appointment in your home, write or call evenings Mrs. Alan Buckner, 5804 School St., Jackson, Mich. Telephone 72-5-8455. C29

### ★ For Sale

**MAN'S navy blue suit**, sport coat and pants, good quality, like new, reasonable. IV 3-0475. C29

**TRANSISTOR** tape recorder, like new with accessories \$120; now \$80. Must sell. Run, 332-5605. C29

**MISSIE'S figure skates**, also 3 books and records. Call 485-2115. C29

**RAYON, COY, Chanel, Arpaige, Max Factor**. Complete cosmetic supplies included. Miss Clatrol, Technique, Ross, Noroon, Colop, etc. GULLIVER'S STATE (RUCS), 1177 Michigan at Cambridge. C29

**VACUUM CLEANERS** - Authorized Electrolux sales and service. Free home demonstration. Call IV 3-9488, 315 E. Michigan. C29

**LADIES custom made** tailored figure skates. Excellent condition. Best offer. Call 332-1000. C29

**TIME, LIFE, Sports Illustrated, Newsweek**. At lowest prices. Call 355-8845 after 5 p.m. C29

**PRET ENLARGEMENT, B & W, 5x7"** with this ad and your negative. Limit one per family. MIKEX REXALL PHOTOCOPY CENTER at Franklin. Pre-arrangement specialists. C29

**AUTOMATIC** 2 1/2" and sewing machine. Complete with eight cases which make many fancy designs. Inexpensive. Must sell. Only eight payments of \$7.00 per month or cash. For information, PHONE CL 3-2302. C29

### ★ For Rent

**THREE ROOMS**, private Sub-let, University, 841 E. 21st St. 2400. Call 352-8924 after 5 p.m. ED 2-1919. C29

**WEST LANSING AREA**, very nice, newly decorated, 3 rooms and bath. University, 470 including utilities. 484-2724. C29

**PLANNED APARTMENT** for four beds including all cooking facilities. All utilities paid for. Call 355-2111. Phone 352-8421. C29

**KITCHEN**, 2 rooms, \$110. Call IV 3-2125. Mrs. Sargason. C29

**SIXTYS**

**UNSUPERVISED**, apartment, kitchen, lounge, fireplace, TV. Two blocks from Union. Reasonably priced. Also 500. ED 2-1919. C29

**SINGLE FOR MAX**, 27 Plymouth St. ED 2-4902 after 5:30 p.m. Need not be a student. C29

**UNSUPERVISED**, apartment, kitchen, cooking, parking. Close to University. Call Kamae, 352-2710. Winter only. C29

**FURNISHED**, single room for rent, 17 S. Howard St. \$6.50 per week, parking space. Near bus stop. IV 4-5910. C29

**VERY DELICIOUS ROOM**, private bath for one man, 352-5574. C29

**PANELS**, large single, five blocks north of Union. Shiny bath with cement. Garage, parking. ED 2-1919. C29

**WALL**, 1/2 block, carpeted, fireplace, TV, parking. Room for six. First time offered. 312 Elmwood. Phone 352-4293 from 6:00 to 10 p.m. ED 2-1919. C29

**AVAILABLE TUESDAY**, one room, single of double, two-block from campus. ED 2-1919 after 5 p.m. C29

**ROOMS** - Community kitchen and living room across from campus. Call 24 3-4628 after 2 p.m. ED 2-1919. C29

**PLEASANT ROOM**, every morning by bus over 21/2 walking distance, quiet for study. ED 2-1919. C29

**PENNSYLVANIA SOUTH** 200 block, one room furnished. Men. Parking. Phone IV 2-1955. C29

### ★ Employment

**HELP** in Engineering work. Time arranged as the night or weekend. At least one hour a week. \$1.25 an hour. 355-8855. C29

**MUSIC TEACHER**, local church. For more information, contact 355-8855. C29

**TEACHER**, 5th grade, 1st year. For more information, contact 355-8855. C29

**TEACHER**, 1st grade, 1st year. For more information, contact 355-8855. C29

**TEACHER**, 2nd grade, 1st year. For more information, contact 355-8855. C29

### ★ For Sale

**BOOK CASES**, 18" x 24" x 55", \$5.75, \$6.50, \$7.25, \$8.00, \$8.75, \$9.50, \$10.25, \$11.00, \$11.75, \$12.50, \$13.25, \$14.00, \$14.75, \$15.50, \$16.25, \$17.00, \$17.75, \$18.50, \$19.25, \$20.00, \$20.75, \$21.50, \$22.25, \$23.00, \$23.75, \$24.50, \$25.25, \$26.00, \$26.75, \$27.50, \$28.25, \$29.00, \$29.75, \$30.50, \$31.25, \$32.00, \$32.75, \$33.50, \$34.25, \$35.00, \$35.75, \$36.50, \$37.25, \$38.00, \$38.75, \$39.50, \$40.25, \$41.00, \$41.75, \$42.50, \$43.25, \$44.00, \$44.75, \$45.50, \$46.25, \$47.00, \$47.75, \$48.50, \$49.25, \$50.00, \$50.75, \$51.50, \$52.25, \$53.00, \$53.75, \$54.50, \$55.25, \$56.00, \$56.75, \$57.50, \$58.25, \$59.00, \$59.75, \$60.50, \$61.25, \$62.00, \$62.75, \$63.50, \$64.25, \$65.00, \$65.75, \$66.50, \$67.25, \$68.00, \$68.75, \$69.50, \$70.25, \$71.00, \$71.75, \$72.50, \$73.25, \$74.00, \$74.75, \$75.50, \$76.25, \$77.00, \$77.75, \$78.50, \$79.25, \$80.00, \$80.75, \$81.50, \$82.25, \$83.00, \$83.75, \$84.50, \$85.25, \$86.00, \$86.75, \$87.50, \$88.25, \$89.00, \$89.75, \$90.50, \$91.25, \$92.00, \$92.75, \$93.50, \$94.25, \$95.00, \$95.75, \$96.50, \$97.25, \$98.00, \$98.75, \$99.50, \$100.25, \$101.00, \$101.75, \$102.50, \$103.25, \$104.00, \$104.75, \$105.50, \$106.25, \$107.00, \$107.75, \$108.50, \$109.25, \$110.00, \$110.75, \$111.50, \$112.25, \$113.00, \$113.75, \$114.50, \$115.25, \$116.00, \$116.75, \$117.50, \$118.25, \$119.00, \$119.75, \$120.50, \$121.25, \$122.00, \$122.75, \$123.50, \$124.25, \$125.00, \$125.75, \$126.50, \$127.25, \$128.00, \$128.75, \$129.50, \$130.25, \$131.00, \$131.75, \$132.50, \$133.25, \$134.00, \$134.75, \$135.50, \$136.25, \$137.00, \$137.75, \$138.50, \$139.25, \$140.00, \$140.75, \$141.50, \$142.25, \$143.00, \$143.75, \$144.50, \$145.25, \$146.00, \$146.75, \$147.50, \$148.25, \$149.00, \$149.75, \$150.50, \$151.25, \$152.00, \$152.75, \$153.50, \$154.25, \$155.00, \$155.75, \$156.50, \$157.25, \$158.00, \$158.75, \$159.50, \$160.25, \$161.00, \$161.75, \$162.50, \$163.25, \$164.00, \$164.75, \$165.50, \$166.25, \$167.00, \$167.75, \$168.50, \$169.25, \$170.00, \$170.75, \$171.50, \$172.25, \$173.00, \$173.75, \$174.50, \$175.25, \$176.00, \$176.75, \$177.50, \$178.25, \$179.00, \$179.75, \$180.50, \$181.25, \$182.00, \$182.75, \$183.50, \$184.25, \$185.00, \$185.75, \$186.50, \$187.25, \$188.00, \$188.75, \$189.50, \$190.25, \$191.00, \$191.75, \$192.50, \$193.25, \$194.00, \$194.75, \$195.50, \$196.25, \$197.00, \$197.75, \$198.50, \$199.25, \$200.00, \$200.75, \$201.50, \$202.25, \$203.00, \$203.75, \$204.50, \$205.25, \$206.00, \$206.75, \$207.50, \$208.25, \$209.00, \$209.75, \$210.50, \$211.25, \$212.00, \$212.75, \$213.50, \$214.25, \$215.00, \$215.75, \$216.50, \$217.25, \$218.00, \$218.75, \$219.50, \$220.25, \$221.00, \$221.75, \$222.50, \$223.25, \$224.00, \$224.75, \$225.50, \$226.25, \$227.00, \$227.75, \$228.50, \$229.25, \$230.00, \$230.75, \$231.50, \$232.25, \$233.00, \$233.75, \$234.50, \$235.25, \$236.00, \$236.75, \$237.50, \$238.25, \$239.00, \$239.75, \$240.50, \$241.25, \$242.00, \$242.75, \$243.50, \$244.25, \$245.00, \$245.75, \$246.50, \$247.25, \$248.00, \$248.75, \$249.50, \$250.25, \$251.00, \$251.75, \$252.50, \$253.25, \$254.00, \$254.75, \$255.50, \$256.25, \$257.00, \$257.75, \$258.50, \$259.25, \$260.00, \$260.75, \$261.50, \$262.25, \$263.00, \$263.75, \$264.50, \$265.25, \$266.00, \$266.75, \$267.50, \$268.25, \$269.00, \$269.75, \$270.50, \$271.25, \$272.00, \$272.75, \$273.50, \$274.25, \$275.00, \$275.75, \$276.50, \$277.25, \$278.00, \$278.75, \$279.50, \$280.25, \$281.00, \$281.75, \$282.50, \$283.25, \$284.00, \$284.75, \$285.50, \$286.25, \$287.00, \$287.75, \$288.50, \$289.25, \$290.00, \$290.75, \$291.50, \$292.25, \$293.00, \$293.75, \$294.50, \$295.25, \$296.00, \$296.75, \$297.50, \$298.25, \$299.00, \$299.75, \$300.50, \$301.25, \$302.00, \$302.75, \$303.50, \$304.25, \$305.00, \$305.75, \$306.50, \$307.25, \$308.00, \$308.75, \$309.50, \$310.25, \$311.00, \$311.75, \$312.50, \$313.25, \$314.00, \$314.75, \$315.50, \$316.25, \$317.00, \$317.75, \$318.50, \$319.25, \$320.00, \$320.75, \$321.50, \$322.25, \$323.00, \$323.75, \$324.50, \$325.25, \$326.00, \$326.75, \$327.50, \$328.25, \$329.00, \$329.75, \$330.50, \$331.25, \$332.00, \$332.75, \$333.50, \$334.25, \$335.00, \$335.75, \$336.50, \$337.25, \$338.00, \$338.75, \$339.50, \$340.25, \$341.00, \$341.75, \$342.50, \$343.25, \$344.00, \$344.75, \$345.50, \$346.25, \$347.00, \$347.75, \$348.50, \$349.25, \$350.00, \$350.75, \$351.50, \$352.25, \$353.00, \$353.75, \$354.50, \$355.25, \$356.00, \$356.75, \$357.50, \$358.25, \$359.00, \$359.75, \$360.50, \$361.25, \$362.00, \$362.75, \$363.50, \$364.25, \$365.00, \$365.75, \$366.50, \$367.25, \$368.00, \$368.75, \$369.50, \$370.25, \$371.00, \$371.75, \$372.50, \$373.25, \$374.00, \$374.75, \$375.50, \$376.25, \$377.00, \$377.75, \$378.50, \$379.25, \$380.00, \$380.75, \$381.50, \$382.25, \$383.00, \$383.75, \$384.50, \$385.25, \$386.00, \$386.75, \$387.50, \$388.25, \$389.00, \$389.75, \$390.50, \$391.25, \$392.00, \$392.75, \$393.50, \$394.25, \$395.00, \$395.75, \$396.50, \$397.25, \$398.00, \$398.75, \$399.50, \$400.25, \$401.00, \$401.75, \$402.50, \$403.25, \$404.00, \$404.75, \$405.50, \$406.25, \$407.00, \$407.75, \$408.50, \$409.25, \$410.00, \$410.75, \$411.50, \$412.25, \$413.00, \$413.75, \$414.50, \$415.25, \$416.00, \$416.75, \$417.50, \$418.25, \$419.00, \$419.75, \$420.50, \$421.25, \$422.00, \$422.75, \$423.50, \$424.25, \$425.00, \$425.75, \$426.50, \$427.25, \$428.00, \$428.75, \$429.50, \$430.25, \$431.00, \$431.75, \$432.50, \$433.25, \$434.00, \$434.75, \$435.50, \$436.25, \$437.00, \$437.75, \$438.50, \$439.25, \$440.00, \$440.75, \$441.50, \$442.25, \$443.00, \$443.75, \$444.50, \$445.25, \$446.00, \$446.75, \$447.50, \$448.25, \$449.00, \$449.75, \$450.50, \$451.25, \$452.00, \$452.75, \$453.50, \$454.25, \$455.00, \$455.75, \$456.50, \$457.25, \$458.00, \$458.75, \$459.50, \$460.25, \$461.00, \$461.75, \$462.50, \$463.25, \$464.00, \$464.75, \$465.50, \$466.25, \$467.00, \$467.75, \$468.50, \$469.25, \$470.00, \$470.75, \$471.50, \$472.25, \$473.00, \$473.75, \$474.50, \$475.25, \$476.00, \$476.75, \$477.50, \$478.25, \$479.00, \$479.75, \$480.50, \$481.25, \$482.00, \$482.75, \$483.50, \$484.25, \$485.00, \$485.75, \$486.50, \$487.25, \$488.00, \$488.75, \$489.50, \$490.25, \$491.00, \$491.75, \$492.50, \$493.25, \$494.00, \$494.75, \$495.50, \$496.25, \$497.00, \$497.75, \$498.50, \$499.25, \$500.00, \$500.75, \$501.50, \$502.25, \$503.00, \$503.75, \$504.50, \$505.25, \$506.00, \$506.75, \$507.50, \$508.25, \$509.00, \$509.75, \$510.50, \$511.25, \$512.00, \$512.75, \$513.50, \$514.25, \$515.00, \$515.75, \$516.50, \$517.25, \$518.00, \$518.75, \$519.50, \$520.25, \$521.00, \$521.75, \$522.50, \$523.25, \$524.00, \$524.75, \$525.50, \$526.25, \$527.00, \$527.75, \$528.50, \$529.25, \$530.00, \$530.75, \$531.50, \$532.25, \$533.00, \$533.75, \$534.50, \$535.25, \$536.00, \$536.75, \$537.50, \$538.25, \$539.00, \$539.75, \$540.50, \$541.25, \$542.00, \$542.75, \$543.50, \$544.25, \$545.00, \$545.75, \$546.50, \$547.25, \$548.00, \$548.75, \$549.50, \$550.25, \$551.00, \$551.75, \$552.50, \$553.25, \$554.00, \$554.75, \$555.50, \$556.25, \$557.00, \$557.75, \$558.50, \$559.25, \$560.00, \$560.75, \$561.50, \$562.25, \$563.00, \$563.75, \$564.50, \$565.25, \$566.00, \$566.75, \$567.50, \$568.25, \$569.00, \$569.75, \$570.50, \$571.25, \$572.00, \$572.75, \$573.50, \$574.25, \$575.00, \$575.75, \$576.50, \$577.25, \$578.00, \$578.75, \$579.50, \$580.25, \$581.00, \$581.75, \$582.50, \$583.25, \$584.00, \$584.75, \$585.50, \$586.25, \$587.00, \$587.75, \$588.50, \$589.25, \$590.00, \$590.75, \$591.50, \$592.25, \$593.00, \$593.75, \$594.50, \$595.25, \$596.00, \$596.75, \$597.50, \$598.25, \$599.00, \$599.75, \$600.50, \$601.25, \$602.00, \$602.75, \$603.50, \$604.25, \$605.00, \$605.75, \$606.50, \$607.25, \$608.00, \$608.75, \$609.50, \$610.25, \$611.00, \$611.75, \$612.50, \$613.25, \$614.00, \$614.75, \$615.50, \$616.25, \$617.00, \$617.75, \$618.50, \$619.25, \$620.00, \$620.75, \$621.50, \$622.25, \$623.00, \$623.75, \$624.50, \$625.25, \$626.00, \$626.75, \$627.50, \$628.25, \$629.00, \$629.75, \$630.50, \$631.25, \$632.00, \$632.75, \$633.50, \$634.25, \$635.00, \$635.75, \$636.50, \$637.25, \$638.00, \$638.75, \$639.50, \$640.25, \$641.00, \$641.75, \$642.50, \$643.25, \$644.00, \$644.75, \$645.50, \$646.25, \$647.00, \$647.75, \$648.50, \$649.25, \$650.00, \$650.75, \$651.50, \$652.25, \$653.00, \$653.75, \$654.50, \$655.25, \$656.00, \$656.75, \$657.50, \$658.25, \$659.00, \$659.75, \$660.50, \$661.25, \$662.00, \$662.75, \$663.50, \$664.25, \$665.00, \$665.75, \$666.50, \$667.25, \$668.00, \$668.75, \$669.50, \$670.25, \$671.00, \$671.75, \$672.50, \$673.25, \$674.00, \$674.75, \$675.50, \$676.25, \$677.00, \$677.75, \$678.50, \$679.25, \$680.00, \$680.75, \$681.50, \$682.25, \$683.00, \$683.75, \$684.50, \$685.25, \$686.00, \$686.75, \$687.50, \$688.25, \$689.00, \$689.75, \$690.50, \$691.25, \$692.00, \$692.75, \$693.50, \$694.25, \$695.00, \$695.75, \$696.50, \$697.25, \$698.00, \$698.75, \$699.50, \$700.25, \$701.00, \$701.75, \$702.50, \$703.25, \$704.00, \$704.75, \$705.50, \$706.25, \$707.00, \$707.75, \$708.50, \$709.25, \$710.00, \$710.75, \$711.50, \$712.25, \$713.00, \$713.75, \$714.50, \$715.25, \$716.00, \$716.75, \$717.50, \$718.25, \$719.00, \$719.75, \$720.50, \$721.25, \$722.00, \$722.75, \$723.50, \$724.25, \$725.00, \$725.75, \$726.50, \$727.25, \$728.00, \$728.75, \$729.50, \$730.25, \$731.00, \$731.75, \$732.50, \$733.25, \$734.00, \$734.75, \$735.50, \$736.25, \$737.00, \$737.75, \$738.50, \$739.25, \$740.00, \$740.75, \$741.50, \$742.25, \$743.00, \$743.75, \$744.50, \$745.25, \$746.00, \$746.75, \$747.50, \$748.25, \$749.00, \$749.75, \$750.50, \$751.25, \$752.00, \$752.75, \$753.50, \$754.25, \$755.00, \$755.75, \$756.50, \$757.25, \$758.00, \$758.75, \$759.50, \$760.25, \$761.00, \$761.75, \$762.50, \$763.25, \$764.00, \$764.75, \$765.50, \$766.25, \$767.00, \$767.75, \$768.50, \$769.25, \$770.00, \$770.75, \$771.50, \$772.25, \$773.00, \$773.75, \$774.50, \$775.25, \$776.00, \$776.75, \$777.50, \$778.25, \$779.00, \$779.75, \$780.50, \$781.25, \$782.00, \$782.75, \$783.50, \$784.25, \$785.00, \$785.75, \$786.50, \$787.25, \$788.00, \$788.75, \$789.50, \$790.25, \$791.00, \$791.75, \$792.50, \$793.25, \$794.00, \$794.75, \$795.50, \$796.25, \$797.00, \$797.75, \$798.50, \$799.25, \$800.00, \$800.75, \$801.50, \$802.25, \$803.00, \$803.75, \$804.50, \$805.25, \$806.00, \$806.75, \$807.50, \$808.25, \$809.00, \$809.75, \$810.50, \$811.25, \$812.00, \$812.75, \$813.50, \$814.25, \$815.00, \$815.75, \$816.50, \$817.25, \$818.00, \$818.75, \$819.50, \$820.25, \$821.00, \$821.75, \$822.50, \$823.25, \$824.00, \$824.75, \$825.50, \$826.25, \$827.00, \$827.75, \$828.50, \$829.25, \$830.00, \$830.75, \$831.50, \$832.25, \$833.00, \$833.75, \$834.50, \$835.25, \$836.00, \$836.75, \$837.50, \$838.25, \$839.00, \$839.75, \$840.50, \$841.25, \$842.00, \$842.75, \$843.50, \$844.25, \$845.00, \$845.75, \$846.50, \$847.25, \$848.00, \$848.75, \$849.50, \$850.25, \$851.00, \$851.75, \$852.50, \$853.25, \$854.00, \$854.75, \$855.50, \$856.25, \$857.00, \$857.75, \$858.50, \$859.25, \$860.00, \$860.75, \$861.50, \$862.25, \$863.00, \$863.75, \$864.50, \$865.25, \$866.00, \$866.75, \$867.50, \$868.25, \$869.00, \$869.75, \$870.50, \$871.25, \$872.00, \$872.7



## Short Steps, Galoshes Help To Prevent Falls

Falls on slippery campus walks injured 332 students during January and caused loss of them to the University for treatment.

A. L. Osborn, safety engineer with the Department of Safety, offered several tips to avoid falls.

Osborn recommended proper footwear. Snow boots and galoshes may not be glamorous, he said, but they provide traction on slippery surfaces.

He also suggested ice grippers which fasten to the heels and soles of shoes.

"High-heeled shoes have little heel surface for traction and also tend to throw you off balance," Osborn warned.

"Take short steps and lean forward," he said. He advised students to use handrails on steps. When climbing steps without rails, turn the feet sideways. If you start to fall, relax.

"A limp fall is less likely to hurt you seriously," Osborn said.

The National Safety Council recorded 3,500 deaths due to falls last year, but only 40 of those occurred in the 15-to-24-year-old age group.

The University's part in preventing injuries from falls consists of salting the slippery and snowy surfaces. Sodium chloride

or rock salt will turn the ice to slush, melting even snow piled up from previous storms.

The salt will not work, however, in temperatures under six degrees below zero. It is most useful when applied before the snow is an inch thick, Osborn said.

## Xerox Machine Copies Material For Students

Fast copies of important material is one of the many special student services provided by the library.

Located in the first floor stacks of the library, the Xerox copy machine enables students to have prints made of an article or one chapter of a book.

Last year more than 280,000 separate copies were made.

Because of this demand, it has been necessary to restrict use of the machine to library material.

There is a charge of 5 cents for each copy. This fee covers only the cost of the machine rental.

The library subsidizes the operation of the Xerox machine.

Copies can be made on Mondays from 8 a.m. to noon, 1 to 5 p.m., and 7 to 10 p.m.; Saturdays 9 a.m. to noon, 2 to 5 p.m., and Sundays from 2 p.m. to 11 p.m.

**DON'T OVERSTEP YOUR TIME**  
SARASOTA, Fla. (AP) Signs on a private parking lot.

"If you park here, there will be a toe charge."

## Study Of Cattle Disease May Benefit Humans' TB

More accurate and faster procedures for diagnosing tuberculosis are being developed by Michigan State's microbiology department. This study will aid farmers, but it also has implications for human medicine.

The research, which presently involves a study of TB in cattle, may be applied to the study of human TB. The project is under the direction of Dr. Walter L. Mallmann.

Successful development of the new methods would help the diagnostician to tell whether the disease detected is actually tuberculosis or another disease

closely resembling it. Farmers and veterinarians are interested in this because it has a bearing on whether or not cattle need to be destroyed.

The tuberculosis research team is concentrating its efforts on a group of atypical mycobacterial organisms they have isolated from diseased cattle. These are similar to atypical organisms which have been found in man. The organisms have caused great concern among scientists since they are highly resistant to treatment.

"It may be possible that this type of organism may pass from man to animal or from animal to man just as bovine TB is transmissible from animal to man and man to animal," Mallmann said.

The need to destroy animals infected with atypical organisms may be equally as great as those infected with bovine TB.

As part of the tests, blood serum of experimentally infected cattle is examined for antibodies which indicate tuberculosis.

"All of the well-known serological tests, along with new applications, are being made on the serum with the hope a blood test

can be developed that can be used for diagnosing bovine TB," Mallmann said.

"Our research team is very hopeful of finding the answers to bovine tuberculosis," Mallmann said. "But we're also interested in finding the significance of a new group of atypical organisms."

"We want to find out what relationship these organisms, which have been found in animals and in the soil, have to TB in man."

## NAACP To Hold Panel Discussion

Michigan State's NAACP chapter will sponsor a panel discussion on "The Negro, Africa and Nationalism," at 8 to 10 p.m. in Parlor C Union.

The six panel members who will take part in the discussion are Hermione Harding, Baltimore, Md., senior; Laura Chapman, Gary, Ind., junior; Frazier Alexander, St. Louis, Mo., junior; Gerald Bray, Detroit sophomore; Melvin Bucholtz, New York City senior and Ayo Azikwe, Lagos, Nigeria, junior.

## Organization Aids Library By Increasing Holdings

The 1,700 members of the Friends of the Library, a relatively unknown group at the University, is increasing library holdings.

The 300-member organization assists in bringing library materials and books to the University, particularly in the sciences and arts.

The group was organized by Jackson E. Towne, a professor of bibliography in 1944.

Outstanding donations by the group include a poetry collection of James Whitcomb Riley, Benjamin Franklin's printing of Cresset's "Clavo Major" and the first edition of Adam Smith's "Wealth of Nations."

Other contributions include materials in horticulture, English and American literature, and veterinary medicine.

Two rare University library

collections are housed in the Friends of the Library conference room. A bee collection by Ray Standard Baker dates back to 1868. A cookbook collection includes 1,532 recipes.

"The group aids in securing funds for the purchase of rare books and materials and serves to educate townspeople and alumni," said Richard E. Chapin, secretary of the group and director of the library.

**GLADMER THEATRE**  
Now! Ends Fri.  
Feature at 1:45 - 3:45  
3:45 - 7:45 - 9:45 P.M.

**HORROR HOTEL**  
Just ring for doom service!  
Starts Saturday!  
MACABRE MASTERPIECE

AMERICAN INTERNATIONAL PRESENTS  
**EDGAR ALIAN POE'S THE RAVEN**  
STARRING VINCENT PRICE  
PETER LORRE  
BORIS KARLOFF  
"TAKE THY BEAK FROM OUT MY HEART AND TAKE THY FORM FROM OFF MY DOOR QUOTH THE RAVEN NEVERMORE!"  
POE

**MICHIGAN THEATRE**  
TODAY and THUR!!  
1:20 - 3:25 - 5:30 - 7:35 - 9:45

TONY CURTIS  
**40 POUNDS OF TROUBLE**  
AND A TON OF JOY

SUZANNE PLESSETTE-CLARY WILCOX

Starting FRIDAY  
**DEAN MARTIN - LANA TURNER**

**WHOS GOT THE ACTION?**

EDDIE ALBERT WALTER MATTHAU PAUL FORD

Coming Next  
**"DIAMOND HEAD"**

Coming Next  
**"DIAMOND HEAD"**



CIRCLE-Michigan State will be well represented in Circle Player's production of J.M. Synge's "The Playboy of the Western World." In the cast are Corral Hawkins, Dick Reynolds, Helen Shaw, and Ken... The play opens Friday in Lansing.

THE BEST IN FOREIGN FILMS  
**STATE THEATRE**  
Doctor in Love  
Victor Mature  
Gaiety On Teacher  
8:35 only!

Nothing is funnier and spicier than  
**"DOCTOR IN LOVE"**  
Victor Mature  
Gaiety On Teacher  
8:35 only!

Nothing is funnier and spicier than  
**"CARRY ON TEACHER"**  
Kenneth Connor  
Starting Friday

Exciting, with laughs from start to finish!  
**"DOCTOR IN LOVE"**  
Victor Mature  
Gaiety On Teacher  
8:35 only!

Nothing is funnier and spicier than  
**"CARRY ON TEACHER"**  
Kenneth Connor  
Starting Friday

Exciting, with laughs from start to finish!  
**"DOCTOR IN LOVE"**  
Victor Mature  
Gaiety On Teacher  
8:35 only!

Nothing is funnier and spicier than  
**"CARRY ON TEACHER"**  
Kenneth Connor  
Starting Friday

Exciting, with laughs from start to finish!  
**"DOCTOR IN LOVE"**  
Victor Mature  
Gaiety On Teacher  
8:35 only!

Nothing is funnier and spicier than  
**"CARRY ON TEACHER"**  
Kenneth Connor  
Starting Friday

Exciting, with laughs from start to finish!  
**"DOCTOR IN LOVE"**  
Victor Mature  
Gaiety On Teacher  
8:35 only!

Nothing is funnier and spicier than  
**"CARRY ON TEACHER"**  
Kenneth Connor  
Starting Friday

Exciting, with laughs from start to finish!  
**"DOCTOR IN LOVE"**  
Victor Mature  
Gaiety On Teacher  
8:35 only!

Nothing is funnier and spicier than  
**"CARRY ON TEACHER"**  
Kenneth Connor  
Starting Friday

Exciting, with laughs from start to finish!  
**"DOCTOR IN LOVE"**  
Victor Mature  
Gaiety On Teacher  
8:35 only!

Nothing is funnier and spicier than  
**"CARRY ON TEACHER"**  
Kenneth Connor  
Starting Friday

Exciting, with laughs from start to finish!  
**"DOCTOR IN LOVE"**  
Victor Mature  
Gaiety On Teacher  
8:35 only!

Nothing is funnier and spicier than  
**"CARRY ON TEACHER"**  
Kenneth Connor  
Starting Friday

Exciting, with laughs from start to finish!  
**"DOCTOR IN LOVE"**  
Victor Mature  
Gaiety On Teacher  
8:35 only!

Nothing is funnier and spicier than  
**"CARRY ON TEACHER"**  
Kenneth Connor  
Starting Friday

Exciting, with laughs from start to finish!  
**"DOCTOR IN LOVE"**  
Victor Mature  
Gaiety On Teacher  
8:35 only!

Nothing is funnier and spicier than  
**"CARRY ON TEACHER"**  
Kenneth Connor  
Starting Friday

Exciting, with laughs from start to finish!  
**"DOCTOR IN LOVE"**  
Victor Mature  
Gaiety On Teacher  
8:35 only!

Join me as an  
**Airline Stewardess**  
PARIS... LONDON... ROME... TOKYO  
If these world Capitals sound exciting to you... why not join the big wide wonderful world of Pan Am as a Flight Stewardess.  
**TO QUALIFY YOU MUST BE:**  
• Height - 5'2" to 5'8"  
• Well proportioned  
• Good station  
• Good personal appearance  
Starting salary \$301.00 per month-\$347 upon completion of 4 week training+additional regular increases. All Company Benefits.  
Recruiters will be on your campus March 1st  
For an interview appointment please contact your Placement Bureau  
**PAN AMERICAN**  
WORLD'S MOST EXPERIENCED AIRLINE

**Super Right Choice Beef STEAK-SALE**

Round Steak 89¢ lb.	Sirloin Steak 95¢ lb.	Porterhouse Steak 99¢ lb.
Fresh Lean Ground Beef 49¢ lb.	Center Cut Pork Chops 69¢ lb.	Rib end Pork Roast 29¢ lb.
Liver Sausage 39¢ lb.	Govt. Inspected Turkeys 6 to 8 lbs. 39¢ lb.	Fresh Mushrooms good with Steak 59¢ lb.
Florida Grapefruit 8 lb. bag 69¢	Florida Oranges 5 lb. bag 69¢	Golden Ripe Bananas 15¢ lb.
Fresh Rhubarb 19¢ lb.	Radishes 8 oz. Cello bag 5¢ ea.	Florida Pascal Celery large bunch 25¢ ea.
Frozen Banquet Dinners Turkey, Beef, Chicken, Ham or Salisbury Steak 11 oz. pkg. 39¢ ea.	Freshlike Vegetable's Peas Cut Green Beans 14 lb. case or 12 oz. can 79¢	California Head Lettuce 25¢ ea.
A & P Fruit Cocktail 5 17-oz cans 99¢	Cheerios Ice Cream Bars Pkg. of 6 29¢	Jane Parker Bakery Features Lemon or Rhubarb Pie 8 in. 39¢ ea.
Whitehouse Instant Powdered Milk 12 qt. pkg. 79¢	Donuts Golden, Cinnamon or Sugared pkg. of 12 21¢ ea.	Cracked Wheat Bread 1-lb. loaf 19¢ ea.
Your A & P Super Market Corner of Hagadorn and East Grand River, East Lansing Store Hours 9 a.m. to 9 p.m. Monday thru Saturday		Pound Cake Cresent or Marble 33¢ ea.

AP Food Stores THE GREAT ATLANTIC & PACIFIC TEA COMPANY

