





BEETHOVEN FESTIVAL participants Virginia Rice, left, Lawton, Okla., music graduate student, Madeline Heikkinen, Parma Heights, O., Junior, and Robert Kovacs, Nanuet, N.Y., discuss their upcoming performances. The series will include 32 piano sonatas and five piano concertos. Each evening's performance is arranged to give each audience a taste of Beethoven's varied styles. The festival will end March 12. —State News Photo by John Rummel.

### Republicans Hear Miller

## GOP National Chairman Blasts Kennedy's Policies

President Kennedy engaged in the "shabbiest kind of politics" by injecting the racial issue into the question of creating a Department of Urban Affairs, Republican national chairman William E. Miller said Wednesday.

The outspoken New Frontier critic was in Lansing to address a luncheon sponsored by the Ingham county Republican committee.

In remarks at the luncheon Miller charged that:

"By announcing that a Negro would be appointed head of the new department he was in effect saying that a vote against the creation of the department would be a vote against Negroes."

"If President Kennedy wants a Negro in the cabinet so badly, there are many Negro lawyers better qualified to be Attorney General than Bobby Kennedy is," he said.

He struck out at Kennedy's handling of foreign policy saying that West Berlin, which was once a "showcase of the vigor of democracy" as opposed to the "shambles of communism," is now a "ghetto of freedom."

The wall should have been torn down brick by brick as it was being built, he said, and called this a "typical example of Kennedy's failure to act in foreign-policy crisis."

If we recognize East Germany now, he said, "we will be backing out of our commitments to the Bonn government. West Germany will go to the Russian side and all Europe will become indefensible."

Miller, now serving his sixth

term in Congress, suggested that before the United States makes a commitment to purchase \$100 million worth of United Nations bonds, we should reassess the position of the UN in the world.

Small nations which do not pay their share for UN operations are currently gaining more from the UN than is the U. S. he said.

"We cannot leave the Uni- See KENNEDY page 6

### Senator Francis Conservative Club Speaker Thursday

Senator Lynn O. Francis, majority leader of the Michigan Senate, will speak on "What Will You Tell Them?" Thursday at 8 p.m. in the Union ballroom to the Conservative Club.

Francis presently serves on the education, labor, and appropriations committees of the Legislature. During the past summer months he directed hearings on the MSU Labor and Industrial Relations Center.

### Dr. Carl Clark To Speak on Space At Seminar Friday

Dr. Carl C. Clark, Head of the Biophysics Division, Aviation Medical Laboratory, will speak at an engineering seminar on "The Year 2 of Man's Migration into Space." Friday at 4 p.m. in 404 Electrical Engineering.

Clark, who was selected to test and train Mercury astronauts, will discuss the possible achievements during 1962 and some problems which must be answered before man can continue his invasion of outer space.

"A Congressman naturally spends lots of time fixing his fences, because that's where he sits most of the time." — John W. Richards, Pageland (S.C.) Journal.

### The State News

Published by the students of Michigan State University. Issued on class days Monday through Friday, during the fall, winter and spring quarters. Issued twice weekly during the summer term. Second class postage paid at East Lansing, Michigan.

## Congress

(Continued from Page 1) largest schools in the Michigan NSA region.

Donald Sexton, a student who attended the meeting "just to see what goes on," gave a surprise plea in behalf of NSA. He refuted the argument that the average student "has no role in politics" and urged Congress members to join NSA. He said that he felt AUSG had little to show for the 25 cent student tax charged each term.

"Maybe, if AUSG joins NSA," he said, "they can together do something constructive for the student body."

A good deal of the debate centered on NSA's tendency to take definite stands on world problems. The group's codification of policy states that it deals with world problems only as they affect "the student in the role of the student."

Jim Anderson, defending NSA's role as a vehicle of student opinion, was asked to explain how NSA resolutions regarding nuclear testing were particularly relevant to students.

"Bombs," said Anderson, "won't discriminate between students and non-students." A bill to define the Conservative Club, Young Socialist Club, Young Republican and Young Democrat Clubs as political groups was referred to the political affairs committee. All but the Conservative Club currently are classified as political.

### T. Eugene Avery Has Textbook To Be Released

Dr. T. Eugene Avery, assistant professor of forestry, is the author of "Interpretation of Aerial Photographs," recently published by Burgess Publishing company.

In a release from the publishing house, Avery said that the book is designed for semester-length courses in general photogrammetry and photo interpretations. It also has application in such fields as forestry, geography, geology, civil engineering, mapping, urban planning and the military.

The book is a combination college textbook and laboratory manual.

### Crossword Puzzle

- ACROSS**
1. Serene
  5. Young elephant
  9. Girl's name
  12. Choice marble: var.
  13. Spoken
  14. Unrighteousness
  15. Fish trap
  16. Body of a church
  17. Fondle
  18. Handwriting
  20. Italian town
  22. Air: comb. form
  24. Pawn: slang
  27. Crowding
  31. Eat sparingly
  32. Mimic
  33. Advantage
  35. Exist
  36. Vault
  38. Glorifies
  40. Fry
  42. Consisting of eggs
  43. Placed
  45. Lively intelligence
  46. Friend: Fr.
  51. Gaunt
  53. Old stringed instrument
  54. Dance step
  55. Corrupt
  56. Appellation for Athena
  57. Suffix of ordinal numbers

**ROTOR** **SOP** **FIT**  
**AWARE** **WAR** **INE**  
**MEDAL** **ITERATE**  
**TERM** **LEMON**  
**REMOTE** **RUE**  
**ODOR** **NEEDLING**  
**BID** **STAVE** **SEE**  
**STELLATE** **SLAT**  
**OIL** **RACERS**  
**STRUT** **AERO**  
**WRITHED** **IRATE**  
**AID** **ELA** **SNEER**  
**TOE** **RIM** **ESSEN**

### Solution of Yesterday's Puzzle

1. Rook's call
2. Fish sauce
3. Animal's bed
4. Innumerable
5. Scheme
6. Constellation
7. Bathe
8. Meat
9. Exceptional
10. Content
11. Insect
12. Chinese wax
13. Bushy clump
14. Senseless
15. Substituted reading: Bib.
16. Female saint: abbr.
17. Head pieces
18. On top of
19. Tear down
20. Cautiously
21. Felled tree sections
22. Feather neck piece
23. Side issue
24. Fur: gizzard
25. Bird of peace
26. Predominate
27. Willow genus
28. Glass defect
29. Mimic
30. Enlarge
31. Lubricate

1	2	3	4	5	6	7	8	9	10	11
12				13				14		
15				16				17		
18				19				20		
21				22				23		
24				25				26		
27	28	29		30				31		
32				33				34		
35				36				37		
38				39				40		
41				42				43		
44				45				46	47	48
49	50	51	52	53				54		
55				56				57		
58				59				60		

## LIEBERMANN'S BUXTON ORGANIZER

...the billfold that keeps your cards in view



PULL THE TAB... (for an indexed view)



AND FLIP

(to show 8 more cards)

Buxton's clever "Organizer" billfold keeps 16 credit cards displayed in orderly, fumble-free view at the pull of a tab. In rich mellow-touch cowhide, \$7.50. In supple English Morocco, \$10.00 (tax extra).

FREE Gold Monogram

Liebermann's

Lansing 107 S. Washington

East Lansing 200 E. Grand River



STUDENT ART WORK, now on display at Kresge Art Center, is arranged by Fred Shepard, Okemos graduate student. His pitchers and vases are part of the student display in the lobby of Kresge.

## Sugar'n Spice COFFEE SHOP

Now Every Sunday Student Night

Featuring Low Priced Supper Specials along with Regular Sunday Special Family Style Chicken Dinner with all the Trimmings ..... \$1.65

Jack Far Lansing

# BIG DISCOUNTS

SAVE ON TYPING PAPER Introductory Offer 50% off Reg. Price

COFFEE MUGS Reg. 1.75 SPECIAL 96c

BOOK ENDS RACK TYPE SPECIAL 89c Reg. Price \$1.49

SPARTAN ANIMALS 50% OFF Regular Price

VIEW CARDS CAMPUS VIEWS 6 for 10c Pkg. of 50 - 50c

THESE BARGAINS AND MORE AT THE

# SPARTAN BOOKSTORE

CORNER ANN & MAC

**Lanz**

1962 COLLEGE CO-ED FASHION CONTEST

WIN A ROUND TRIP TO EUROPE VIA PAN AM JET CLIPPER AND A SUMMER SESSION AT THE UNIVERSITY OF YOUR CHOICE

PLUS A COMPLETE LANZ TRAVEL WARDROBE.

In addition, there are opportunities to win 24 various Lanz wardrobe prizes!

Entry blanks and complete information available at

**The Style Shop**

CONTEST CLOSES MARCH 15, 1962. Winners will be announced by April 15, 1962.

\*Prize includes full-size dress and head of any costume listed in the book, four Monograms in Education, for any course desired for which the winner is eligible.

## Scholarship Demand Exceeds Supply 'Five Times'

By KEUN YOUN  
Of the State News Staff

Scholarships are not wasted at this university, according to Melvin C. Buschman, associate director of scholarships.

Critics have charged that some colleges waste their scholarship funds, and that scholarships have no takers because of student apathy or lack of information on how to apply, he said.

"This is absolutely not true

here," Buschman said. "We have five times as many applicants as we have scholarships, and many applicants are turned down because we don't have enough funds available."

Due to the University's budget cut last year, Buschman said, the scholarship funds were cut.

The University is now spending approximately \$500,000 annually on the scholarship program. This amount

is slightly less than two percent of the total university budget.

The University of Michigan has four or five times as many donor and alumni scholarships as Michigan State, Buschman said. Other scholarship funds are about equal.

The number of scholarship students has been steadily increasing since 1950, and approximately 3,000 scholarships are awarded annually, he said.

The principal four-year competitive scholarships including the alumni distinguished scholarship awards, General Motors scholarship, the honor's scholarship, junior and community college scholarships and others are open to entering undergraduates, Buschman said.

To qualify for these scholarships, he said, entering freshmen must rank among the more able students in their high school graduating

class and must have demonstrated superior qualities of initiative and citizenship.

Examinations such as the National Scholarship Qualifying Test is also required of applicants. This year, he said, about 800 high school seniors with an academic average of 3.5 will compete for the alumni distinguished award.

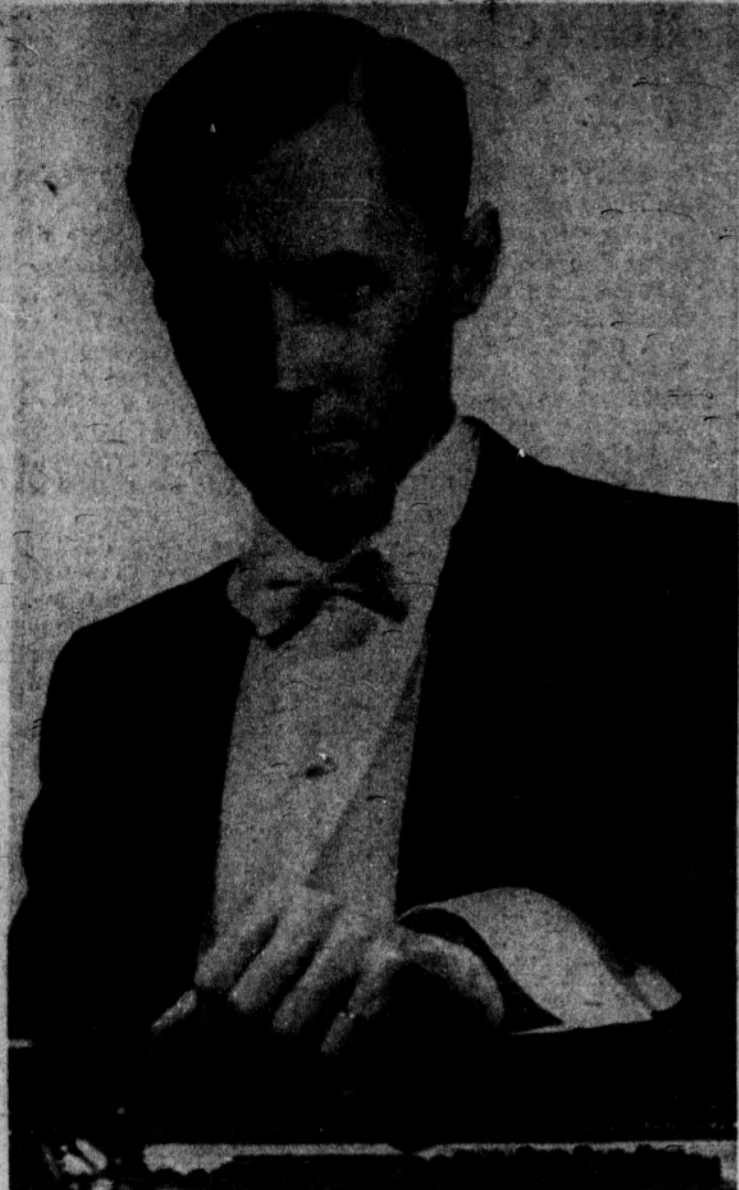
The alumni distinguished awards with stipends of \$1,000 a year, renewable if merited,

will be given to the top ten of these students, he said.

The students who do not win one of these large scholarships but have a financial need, will be given other scholarships and financial aid.

Other scholarships range in value from about \$200 to \$1,000 a year and have various renewal and other features.

Buschman said the University See SCHOLARSHIP page 6



BOSTON POPS SOLOIST Ozan Marsh will present a seldom heard concerto by the Soviet Union's Director of Music, Dimitri Kabalevsky "The Second Piano Concerto in G Minor," during the Pops' program of classical and popular music at 8:15 p.m. Thursday and Friday in the Auditorium.

### AFROTC Cadets Meet Set

A smoker for basic Air Force ROTC cadets will be held at 7 p.m. Friday in 2F Union.

The pay system, uniforms and the "Air Force way of life" will be explained. A movie will be shown.

### Men's Dorms To Contest In Blood Drive

Butterfield Hall challenged East Shaw Hall to a blood donation contest during the final days of Michigan State's blood drive.

Bob Johnson, president of Butterfield Hall, made the official challenge Wednesday afternoon because of the poor results of the blood drive to date.

Biggie Munn, director of athletics, called on all men enrolled at MSU to give blood if physically able.

"The results of the blood drive have been very disappointing so far," Munn said, "and the only way they can improve is if students donate in the next few days."

## BILLY GRAHAM SPEAKS

A controversial movement is picking up steam. If it succeeds, the Bible will be removed from courtrooms. Public-school prayers will be banned. And IN GOD WE TRUST will be taken off our coins. In this week's Post, Billy Graham speaks out against this trend—and tells why he thinks atheists play into Communist hands.

The Saturday Evening POST  
FEBRUARY 17 ISSUE NOW ON SALE

## CAMPUS FLATS SPECIAL!

3 DAYS ONLY

famous Penaljo  
Play Arch  
Casuals



also

Sadler of Boston

Kickerinos



\$1.88

Special Runs  
Thursday, Friday  
& Saturday only.

LANSING Shepard's Hoes EAST LANSING

521 EAST GRAND RIVER E. LANSING

1001 W. SAGINAW LANSING

# SHAHHEEN'S

# SUPER MARKET

WE RESERVE THE RIGHT TO LIMIT QUANTITIES

OPEN SEVEN DAYS A WEEK

FROM 9 A.M. - 9 P.M.

BEST BUYS IN

CHOICE **BEEF** BUDGET  
**59<sup>c</sup>** lb **CHUCK ROAST** **49<sup>c</sup>** lb

**79<sup>c</sup>** lb standing **Rib Roast** **59<sup>c</sup>** lb

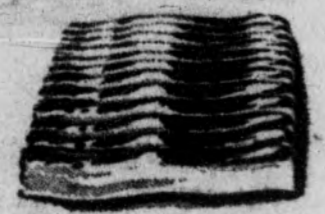
**PORK CHOPS**  
Lean Center Cut



**59<sup>c</sup>** lb

OSCAR MAYER  
**CANNED HAM** **3 lbs for \$2.89**  
Pullman Can

Farmer Peet's  
**BACON** RANCH STYLE



**2 lbs for 99<sup>c</sup>**

AMERICAN  
BRICK  
**CHEESE** **5 LB-LOAF \$1.99**

## BIG FOOD BUYS

MICHIGAN BEET  
SUGAR  
**5 lbs for 39<sup>c</sup>**  
(5 lb limit)

PEWAMA  
BUTTER **49<sup>c</sup>**  
(limit one pound) 1 lb Print

Little Boy Blue  
BREAD **2 for 29<sup>c</sup>**  
(limit 4 loafs) 20 oz loafs

DEAN'S DAIRY  
Chocolate Milk  
**2 qts for 39<sup>c</sup>**

Gold Medal  
FLOUR **5 LB BAG 39<sup>c</sup>**

Little Boy Blue  
ICE CREAM **39<sup>c</sup>**  
(limit 1/2 gal) 1/2 gal

CHARMIN 4 roll pack  
TOILET TISSUE **29<sup>c</sup>**

AGAR  
Tasty Meat **3 for \$1.00**  
12 oz cans

Brooks  
CHILI HOT BEANS  
**7 1-lb cans \$1.00**

Delicious Double Red  
APPLES  
US No. 1  
**4 1/2 \$49<sup>c</sup>**  
(in cello bag)

Book Matches 50 count 10c-pkg

EXOTIC FOODS FROM THE FAR EAST

- Crushed Wheat (Borgul) in 3 Grinds
- Syrian Tahini and Turkish Coffee
- Home-Made Leban
- Syrian Bread at Both Locations
- Hot, Thick Syrian Bread Baked Fresh Daily at East Lansing Store — It's Baked Right Here

Western Pack  
CARROTS **2 1-LB PKG 25<sup>c</sup>**

US No. 1  
Yellow Cooking **3 BAGS 39<sup>c</sup>**  
ONIONS

Michigan US No. 1  
POTATOES **25 1/2 \$49<sup>c</sup>**

Offers in This Paper  
Expire Wednesday, February 21

# Wood Boys, Mike and Bill, Non-Related Tank Brothers

By TERRY DUFFEE  
State News Sports Writer

People with the same last name have always been a source of confusion. For instance, people sometimes have difficulty remembering which Adams, John or John Q., signed the Declaration of Independence.

This problem of identical last names is also confronting two members of the Michigan State swimming team. The last name is Wood, the first are Mike and Bill.

Ever since they have been

swimming together in their freshman year at State, they have befuddled many a sports writer. Some drop their first name thus having Wood swimming some six events instead of the permitted three. Others, such as Bernie Karako of the Columbus Dispatch, assume a family relationship by labeling them the "Wood brothers."

Mike and Bill now contribute to this confusion by introducing each other as "my brother." The ironical thing is that in many ways they are quite similar.

First, they were born only a day apart, Mike's birthday being October 20th and Bill's the 21st. For a good portion of their lives they have lived within 30 miles of each other. Mike is from Jackson and Bill from East Lansing.

Both the Woods are juniors, each one while in high school was named to the high school All-American team, and each were state champions.

Now at State they have become close friends and swim together on the 400-yd. freestyle relay which broke the Big Ten record this year.

However, in appearance they look nothing alike. Bill is tall and thin with blond hair and Mike is shorter and stockier-set with dark hair.

Bill, or "Yoshi," as he is called by his teammates, started swimming competitively in his sophomore year at East Lansing High School.

In his senior year he was class B state champion in the 100 yard backstroke and 150 yard individual medley. That same year he was named to the high school All-American squad for the 100-yd backstroke.

Bill at State has developed into a versatile swimmer capable of participating in many events; but his speciality is the 200-yd individual medley and 400-yd freestyle relay.

Wood, that is Bill Wood, is a divisional physical science and mathematics major who plans a career in oceanography. Besides swimming he likes to sail and recently spent a summer in Florida being a sort of Lloyd Bridges, skin diving, specimen hunting and deep sea fishing.

Mike Wood began swimming as a sixth grader and promptly became state champion for his age group in the individual medley and freestyle.

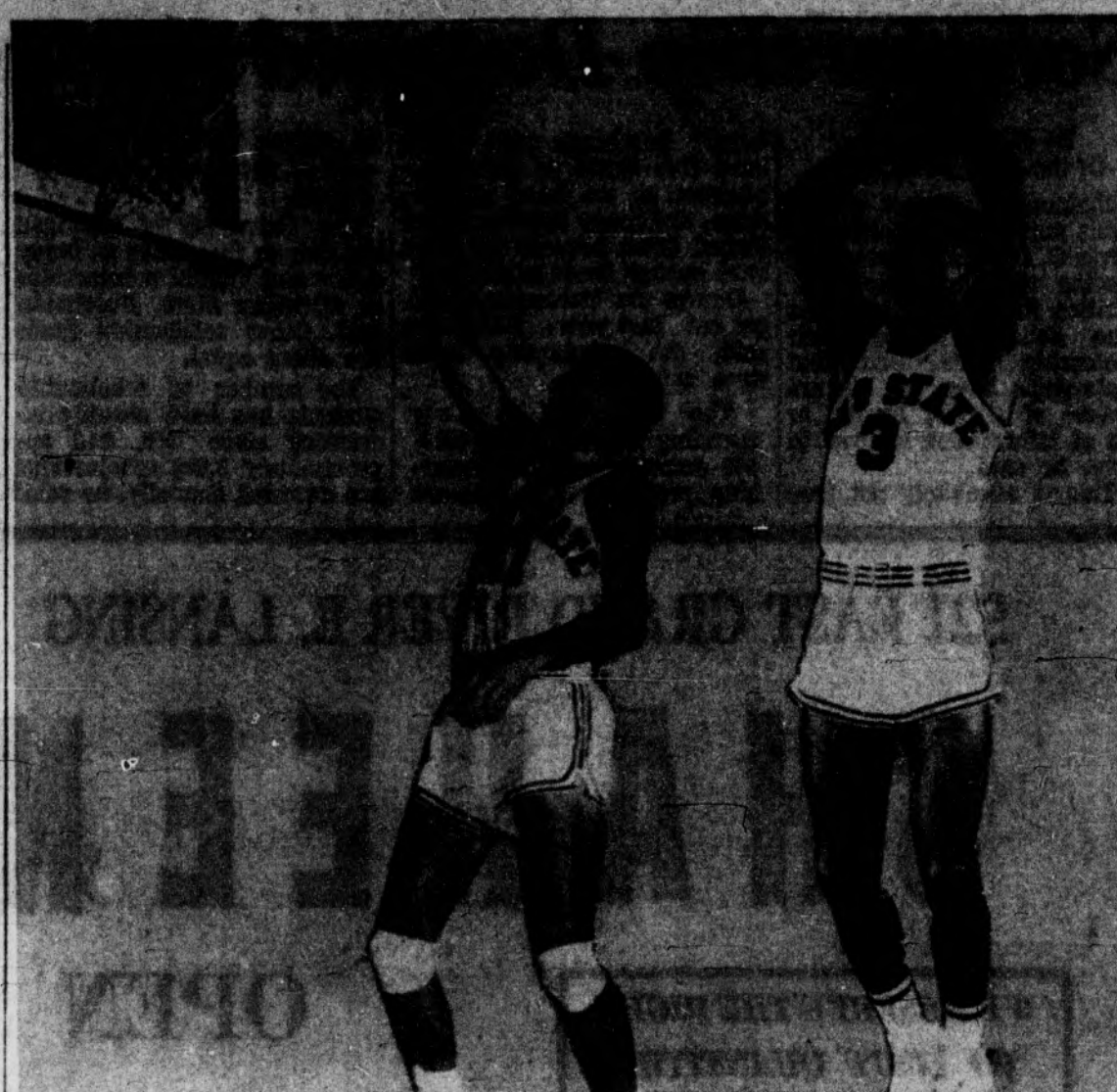
Later he swam for Jackson High School and was class A state champion in his sophomore year in the 100-yd freestyle and the 200-yd freestyle relay. In his senior year Mike was state champion in the 50 and 100-yd freestyle.

He was named to the high school All-American team in the 50, 100 and 200-yd freestyle, and also in the 150 individual medley and 200-yd freestyle and medley relays.

Now at State, Mike swims on the 400-yd freestyle and medley relay teams plus swimming the 50, 100 and 200-yd freestyles. This year he has turned in one of the fastest times in the nation for the 100-yd freestyle, a :48.8.

In the summer Mike, who is a sociology major, changes himself into an actor for the Clark Lake Players. He also enjoys good music and accompanies teammate Jeff Mattson in an interest of sky diving.

The Wood "brothers," rather "teammates," along with the rest of the team are anticipating the Michigan meet as one of the highlights of the season.



PUTTING THE BALL through the hoop is a trademark of these two Ohio State stars, Jerry Lucas (left) and Mel Nowell have been outstanding figures in the Buckeye attack for two years and are back again this season leading the Columbus quintet.

# Hockey Team Plays Denver

By ED KOTLAR  
State News Sports Writer

The sagging Michigan State hockey team, losers of their last four games, tackle the red-hot Denver Pioneers at the MSU Ice Arena Thursday and Friday at 8 p.m.

The Spartans who a few weeks ago had a ten game unbeaten streak and were fighting for league lead, are tied in fourth place and face possible elimination from the play-offs.

The Pioneers, with a 11-7-1 over-all record and a 7-5 league record are in third-place, a half game ahead of State.

The Spartans and Pioneers have played 22 times with Denver, winning 19, to three for State. The last victory for the Spartans was Dec. 18, 1956.

When the Spartans were on an eight game winning streak earlier this season coach Amo Bessone credited balanced scoring on improved defensive work as the reason. Now they have lost four in a row for the same reason.

The third line of Marty Quirk, Gus Hendrickson and Pat Baldwin or Tony Elliot haven't picked up a point in the last five games.

Likely the Spartan defensive crew has been spotty. Twice in the last four games State has taken 2-0 leads in the first period and still lost.

The opposition has scored 21 times in the last four games

and Chandik has made 153 saves while his opposing goalies have made only 103.

Bessone has said that having the students behind the team is like having a one goal advantage. For the Michigan game Feb. 2 when State was a half game out of first place, a record crowd of 3,992 jammed the arena. Let's hope the response is as good now.

# Undefeated Bucks Meet State Cagers

By GARY RONBERG  
State News Sports Writer

Here come the Ohio State University Buckeyes!

Undefeated, top-ranked in the country, and well on its way to a second NCAA championship in three years, the marvelous aggregation from Columbus takes on Michigan State's youthful Spartans, Saturday night at 8 p.m. in Jenison Fieldhouse.

Spearheaded by two-time All-American Jerry Lucas, the Bucks have picked up right where they left off last year one—the lone defeat coming at the hands of Cincinnati in the NCAA championship game.

So far this season, OSU has won 19, lost none, and set a new Big Ten record last Monday night when they downed Michigan for their 24th conference win in succession.

"They're better than ever this season," Spartan coach Forddy Anderson said. "Their key players are all seniors and this means that on top of everything else they have mature experience. They rate among the great teams of all time."

The contest will be played before a sell-out crowd of more than 12,500 fans, as all reserved seats have been gone for weeks and the unreserved sections are certain to be filled by students.

Michigan State enters the game with a 7-10 overall mark and a 2-7 Big Ten slate. Although overwhelming underdogs, Spartan teams of the past have risen up for sparkling performances

against the Bucks in Jenison Fieldhouse meetings.

Two years ago, State dropped an 84-83 heartbreaker in one of the classic cage contests in MSU history. Last year the Spartans were beaten, 91-83, at Columbus, and lost 83-68 here. In the East Lansing encounter, State had led 39-38 at halftime and wasn't counted out until well into the second stanza.

"Our youngsters don't quit and we don't go into any game thinking we haven't a chance," Anderson said. "It will be quite an experience for our sophomores to play against this wonderful team."

SALLY VICTOR: HATMAKER TO FAMOUS WOMEN

Sally Victor has designed hats for Grace Kelly, Queen Elizabeth, Mamie Eisenhower, Hedda Hopper and many others. In this week's Post, you'll meet Sally and her clients. You'll read about her "feuds" with Lilly Daché and Mr. John. Learn why Jackie Kennedy's headgear makes Sally moan. And how Eleanor Roosevelt gave her the idea that doubled her business.

The Saturday Evening POST  
FEBRUARY 17 ISSUE NOW ON SALE



SAME NAMES, DIFFERENT BOYS—Bill Wood (sitting) and Mike Wood (standing) are often taken for brothers. Truth is they're only swimming teammates.

### Intramural Schedule

BASKETBALL	
Court	6 p.m.
3 D.S. Phi - Z.B.T.	Gym II
4 Triangle - A.G.R.	II
5 A.T.O. - Phi Sig K.	III
6 Farmhouse - A.E. Pi	III
	7 p.m.

3 S. Nu - A. Phi A.	II
4 Sig. Ep. - Phi Psi	II
5 T.D. Chi - P. K. Phi	III
6 Phi Gam. - Phi Delt	III
	8 p.m.
3 D.T.D. - S.A.E.	II
4 Phi Tau - K. A. Psi	II
5 S.A.M. - K. Sig	III
6 Psi U. - Phi K. Sig	III
	9 p.m.
3 S. Chi - L.C.A.	II
4 T. Chi - B. T. Pi	II
5 Phi Mu Alpha - D. Chi	III
6 G. Geldings-Plymkr.	III

The Intramural Wrestling room will be open for wrestling practice from 7 to 9 p.m. on Mondays, Wednesdays, and Thursdays.

All those who intend to enter the IM wrestling tournament must have six practice sessions or be in a wrestling class.

### CHICKEN D. INN'S

## Friday Night-"Date Night"

COUPLES EAT FOR THE PRICE OF ONE INCLUDES EVERYTHING ON THE MENU EXCEPT PIZZA

### SUNDAY DINNER DELIGHT

ALL YOU CAN EAT FOR 91¢ THIS WEEK

☆ SPAGHETTI WITH MEAT SAUCE

Dinner Specials Good From Noon Until Midnight

## CHICKEN D. INN

E. Michigan Across From Frandor  
IV 2-6728 FREE DELIVERY AFTER 5 P.M.

### Hockey Standings

WCHL HOCKEY STANDINGS

	W	L	T	Pct.
Michigan Tech.	15	3	0	.833
Michigan	11	3	0	.786
Denver	7	5	0	.583
Michigan State	6	5	1	.542
Minnesota	5	6	1	.458
North Dakota	5	11	0	.313
Colorado College	0	16	0	.000

### SKI SALE

\$30 HENKE BOOTS NOW \$22.50

HAND-KNITTED MITTENS NOW \$2.44

SKI BOOT TREES NOW \$2.88

RENT Skis • Boots & Poles \$5 Toboggans \$3.50

Steve's Sport Shop 3415 S. Cedar TU 2-7398

Walk Away with Savings of Up To 60% Pre-Inventory SALE

Check the Specials at ...

## Campus Book Store

(across from the Union Building)

### Ski Rental

Equipment

- Ski \$5.00
- Boots (50c Insurance)
- Poles

WEEKEND - FRIDAY - MONDAY

### LARRY CUSHION SPORTING GOODS

3020 VINE • Ph. IV 5-7465

### PAT MITCHELL'S

STUDIO

1 Hour Service

## PHOTOS ANY-THING ANY-PLACE ANY-TIME

Famous for 30 years

Passports - Portraits Applications

No Camera Charge • No Appointments Necessary  
107 1/2 East Michigan - Lansing - IV 5-8253

Tareyton delivers the flavor... DUAL FILTER DOES IT!

"Tareyton's Dual Filter in duas partes divisa est!" says Sextus (Crazy Legs) Cato, Bacchus Cup winner. "There are lots of filter cigarettes around," says Crazy Legs, "but a pluribus unum stands out—Dual Filter Tareyton. For the best taste of the best tobaccos, try Tareyton—one filter cigarette that really delivers de gustibus!"

ACTIVATED CHARCOAL INNER FILTER  
PURE WHITE OUTER FILTER

## DUAL FILTER Tareyton

Product of The American Tobacco Company—There is no middle seat. © 1961

# World of Sports

# Spartan Thinclads Face Chippewas

## WKAR Presents Sports Program

By The Associated Press

**MINNEAPOLIS**—Foreign hockey teams will play at least 24 games in the Midwest as warmups for the world hockey tournament at Colorado Springs March 8-18.

**NASSAU, Bahamas**—For the second straight year, Jack Powell's Paper Tiger has won the 184-mile Miami-Nassau yacht race, official tabulations showed Wednesday.

**CHAMONIX, France**—Austria's brilliant Marianne Jahn came from behind Wednesday to capture the special slalom and her second title of the week at the snow-swept world ski games.

**DENVER**—Two Journeyman heavyweights, Zora Folley and Mike DeJohn, wound up training Wednesday for their 10-round fight Thursday night.

**NEW YORK**—John Rose of Arizona State, who finished second to John Uelses' first 16-foot pole vault in the Millrose Games, replaced the ailing Uelses Wednesday in the New York Athletic Club meet to be held Friday at Madison Square Garden.

**TOLEDO, Ohio**—Venezuela Wednesday became the second nation to enter a team in the world wrestling championships to be held at the University of Toledo on June 21-27, the tournament committee announced.

**MILWAUKEE**—Righthander Dennis Ribant, who won 21 games and lost but four in the minor leagues last season, Wednesday became the 27th player to sign a 1962 contract with the Milwaukee Braves.

**MOSCOW**—Top Soviet sports officials indicated Wednesday the Soviet hockey team would refuse to take part in the world championship at Colorado Springs, Colo., if the East German team fails to get travel papers.

**PHILADELPHIA**—The National Collegiate Athletic Association has amended the football rule which caused the rhabarb on the last play of the Notre Dame-Syracuse game at South Bend last year.

Under the amended rule, Notre Dame, as it did on the controversial play, would under the same circumstances get an extra play. The NCAA has said that under the 1961 rules, Notre Dame should not have had a chance to kick a winning field goal.

**BALTIMORE**—The anti-trust suit brought by the American Football League against the National Football League has been postponed for a week to Feb. 26.

The AFL is asking triple damages totaling \$10,000,000, accusing the older NFL with trying to keep the younger circuit from entering professional football in violation of the anti-trust laws.

**BALTIMORE**—The Baltimore Colts announced Wednesday the signing of sophomore Aubrey Linne, a 6-foot-7, 235-pound candidate for the offensive-2nd and flanker-back posts.

By DICK ROBINSON  
State News Sports Writer

State's indoor track contingent returns to dual meet competition tonight after two Saturdays of relay competition—but without John Parker.

The Spartans will face Central Michigan at Jenison Field House at 7 p.m. for the field events and half-an-hour later for the running events. There will be no admission charge.

After running against the state's top track powers, Western Michigan and Michigan, in both the Michigan and Michigan State Relays, the Spartans have proved themselves one of the best in the state and near the top in the Big Ten.

The thinclads coasted to an

easy victory over Ohio State in the season opener and have run well in the U-M and MSU Relays. In the latter the Spartans unofficially placed second behind Western, with Michigan a close third.

The Spartans temporarily lost the services of an up-coming great in Parker, who sprained his ankle running the last leg of the mile relay at the MSU meet. Parker, a middle-distance, relay and broad jump performer, should be back in action for the meet against Indiana and Oklahoma Feb. 24.

Without Parker, State still packs enough punch to beat Central, runner-up in the Interstate Intercollegiate Athletic Conference.

Local standouts this year that

have enough to carry the Spartans through are Jerry Dehnau, pole vault; Wilmer Johnson, broad and high jumps; Sherm Lewis, broad jump, 300 and 60-yard runs and mile re-

lay; and Herm Johnson, hurdles and relay.

Central, which unofficially placed 10th in the MSU Relays with 14 points, has strength in the 600, 800 and 1000-yard runs

and the mile. The Chippewas are headed by sprinter and hurdler Barry Jacobsen, who did not run at State's relays.

Jacobsen, who placed fifth in the 75-yard dash and low hurdles in the 1961 Relays, is the IAC 220-yard champ. Other MI Pleasant stars that place in the Spartans' meet include Dick Darby, fifth in the 600-yard run in 1:16; Don Rasmussen, second in the mile in 2:17.2; and Miller Bob Joles, who placed fifth.

The Chippewas' Len Callard is the IAC titleholder in the broad jump (22' 5 1/2") and Keith Richardson is the conference's king in the high jump at 6' 1 1/2". Another good prospect is quarter-miler Bob Walters.

WKAR radio, AM, is presenting a special 90 minute feature tape entitled, "Winter Sport '62" on Saturday, February 17 at 2 p.m.

The program in sound is of the current Michigan sports scene telling recreational benefits, overall economic impact, future potential and color and atmosphere of this phase of Michigan life.

Highlighting the 90 minute program will be taped interviews, recordings, speeches from experts, reports and music background.

Such people as ski school instructors, conservation department officials, a skiing family and builders of a winter sports center will be interviewed.

## Small College Basketball Poll

The top 10, with first place votes and won-lost records through games of Saturday, Feb. 10 in parenthesis (points on a 10-0-0-7 6-5-4-3-2-1 basis):

- |                           |        |    |
|---------------------------|--------|----|
| 1. Prairie View, Tex. (4) | (15-2) | 65 |
| 2. Grambling, La. (1)     | (16-5) | 54 |
| 3. Hofstra, N. Y. (1)     | (17-2) | 50 |
| 4. Kentucky Wesleyan (1)  | (18-2) | 47 |
| 5. Tennessee State (2)    | (9-6)  | 44 |
| 6. Westminster, Pa.       | (14-2) | 41 |
| 7. Southern Illinois      | (16-5) | 31 |
| 8. Georgetown, Ky.        | (20-4) | 26 |
| 9. Wittenberg, Ohio       | (13-4) | 22 |
| 10. Mt. St. Mary's, Md.   | (14-4) | 14 |

# KROGER FRANDOR Cuts Your Cost Of Living

## with LOW PRICES plus TOP VALUE STAMPS

<p><b>KROGER TOP QUALITY</b></p> <p><b>GROUND BEEF</b></p> <p>3 LB PKG \$1.29</p> <p>Kroger-Cut Thrifty Beef HINDQUARTERS lb. 49¢</p> <p>Kroger-Cut Thrifty SIDES OF BEEF lb. 43¢</p> <p>Kroger-Cut Tenderay Beef HINDQUARTERS lb. 63¢</p>	<p><b>STREAK SALE!</b></p> <p>Look for the Red &amp; Yellow label in the Kroger meat case.</p> <p><b>Sirloin</b> lb. 73¢</p> <p>Kroger-Cut Thrifty PORTERHOUSE or <b>T-Bone</b> lb. 79¢</p> <p>Kroger-Cut Thrifty CUBE STEAK lb. 89¢</p> <p>Kroger-Cut Tenderay Swiss or ROUND STEAK lb. 89¢</p> <p>Kroger-Cut Tenderay SIRLOIN STEAK lb. 99¢</p>	<p><b>KROGER-CUT THRIFTY</b></p> <p><b>Round or Swiss</b></p> <p>lb. 69¢</p> <p>lonia Brand Sliced Bacon lb. 59¢</p> <p>Peschke's KING SIZE FRANKS lb. 49¢</p> <p>25 free TV Stamps attached to each 1-lb. pkg. Peschke's LUNCH MEAT lb. 59¢ (no coupon needed)</p> <p>Kroger-Cut Thrifty CHUCK ROAST lb. 49¢</p> <p>Kroger-Cut Thrifty RIB ROAST lb. 69¢</p> <p>Kroger-Cut Thrifty BOILING BEEF lb. 29¢</p>
--	---	--

# IS IT SQUARE TO SEE EUROPE ON A TOUR?

A Munich songfest, a London theatre party, the Lido Club in Paris, the Student Inn in Heidelberg—all are part of American Express' 1962 Student Tours.

This year, American Express will take students to a Bavarian songfest in Munich; a party at the famous Student Inn in Heidelberg; on a gondola tour of Venice by night; a theatre party in London; a "Sound and Light" spectacular at the Roman Forum; open-air opera and concerts in Rome, Verona and Salzburg; a Swiss fondue dinner; on a visit to the Flea Market, and to dinner and show at the Lido Club in Paris. Does that sound square?

There will be ten student tours in all. These tours are priced from \$1132 up, including transportation. Details are arranged by a regular tour escort. You needn't fuss over timetables and road maps. You'll have more time to learn, to see things, make friends and have fun.

The tours will leave New York June 8 through July 12 and return July 26-Sept. 5. They last from 6 to 10 1/2 weeks. Six tours feature transportation on the new S.S. France. In addition to Western Europe, itineraries include Russia, the Scandinavian countries and Israel.

Each tour will be led by one or more faculty members from Yale, Harvard, Brown, Briarcliff, Radcliffe, Smith, Simmons, Notre Dame or Southern Methodist.

If you'd like full information—Itineraries, prices, departure and arrival dates—on all ten 1962 American Express Student Tours, mail in the coupon below.

American Express Co., 1227 Washington Boulevard, Detroit, Mich. Please send me literature on your 1962 Student Tours of Europe.

Name \_\_\_\_\_  
Address \_\_\_\_\_  
City \_\_\_\_\_ Zone \_\_\_\_\_ State \_\_\_\_\_

Also, please send literature to my parents.  
Name \_\_\_\_\_  
Address \_\_\_\_\_  
City \_\_\_\_\_ Zone \_\_\_\_\_ State \_\_\_\_\_

**AMERICAN EXPRESS TRAVEL SERVICE**

1227 Washington Boulevard, Detroit, WOODWARD 3-8300

**VALUABLE COUPON**

**Swiftning** 3-LB TIN **39¢**

With this coupon and a \$5.00 or more purchase in your Frandor Kroger Store thru Saturday, February 17, 1962. LIMIT: One coupon per customer.

**Samsonite FOLDING TABLE**

Nationally advertised \$6.95 value yours for only \$3.99 with \$25.00 worth of Kroger cash register tapes! And folding chairs will be on sale soon!

ONLY **\$3.99**

**SUNKIST Navel Oranges**

Dozen **49¢**

U. S. No. 1 Bakers IDAHO POTATOES 10-lb. bag 59¢

U. S. Fancy MC INTOSH APPLES 4-lb. bag 39¢

Sc off label Tropicana ORANGE JUICE quart 39¢

Shedd's Fresh ROASTED PEANUTS 3 lbs. \$1

SWIFT'S ALL-PURPOSE SHORTENING **3-Lb. Can 39¢**

(with \$5.00 Purchase and Coupon Above)

PILLSBURY'S BEST **Flour** 25 **\$1.69**

Lb. Bag (with coupon below)

PILLSBURY'S FROSTING OR **Cake Mixes** 3 **99¢**

Pkgs.

FOR THOSE WHO CAN'T BRUSH AFTER EVERY MEAL **Gleem** 83c family size toothpaste **66¢**

WHITE FACIAL TISSUE **Puffs** 10 boxes of 200 \$1

PINCONNING STYLE **Mild Cheese** lb. 49¢

GREEN GIANT **Niblets Corn** 4 12-oz. cans 75¢

GREEN GIANT **Sweet Peas** 4 303 cans 75¢

KROGER PLAIN **Vienna Bread** loaf 19¢

**VALUABLE COUPON**

**Pillsbury** 25 **\$1.69**

**Flour** Lb. Bag

Coupon good in your Western Mich. Kroger store thru Saturday, February 17, 1962. LIMIT: one coupon per customer.

**VALUABLE COUPON**

**50 Extra TV Stamps**

with the purchase of one Hungarian Egg **Coffee Cake**

Coupon good in your Western Mich. Kroger store thru Saturday, February 17, 1962. LIMIT: one coupon per customer.

**VALUABLE COUPON**

**25 Extra TV Stamps**

with the purchase of \$1.00 or more **Fresh Fruits & Vegetables**

Coupon good in your Western Mich. Kroger store thru Saturday, February 17, 1962. LIMIT: one coupon per customer.





GEOLOGY SPEAKER—Mrs. Ted Freers, left, and Mrs. James Olmstead, vice president of the club, look over a list of items to be shown during Dr. Maynard Miller's lecture "Assignment to Forty Lands." Japan, India and the African Mid-East will be highlighted in his account of a year's journey around the world. —State News Photo by Denis Pajot.

information today on campus  
Greek Week Community Projects Committee—35 Union, 7 p.m.  
WSSH—221 Electrical Engineering, 7:45 p.m.  
Pre-Vet Club—146 Giltner, 7:30 p.m.  
Circle Honorary—338 Student Services, 7 p.m.  
Sigma Gamma Epsilon—204 Nat Sci, 7:30 p.m.; Walter Debar, "Application of Geology and Geophysics to Space Research"  
Packaging Wives Society—1108 E. University Village, 8 p.m.; election of officers; casual dress.  
2x4 Club—Forestry Cabin, 7 p.m.  
Martin Luther Chapel—4:10, study group  
7:30 p.m., Lutheran lectures  
9:30 p.m., meditations  
Programs Committee for Water Carnival—Art room of Union, 4 p.m.

Scholarship

(continued from page 3)  
sity funds are primarily for Michigan residents, and will cover the student's tuition.  
The other scholarships depend upon some special qualification in addition to evidence of the scholastic ability, he said, such as residence in a particular locality or a major field of study.  
To qualify for continued scholarship aid, he said, the student must have an all-college average of 2.6 at the end of the freshman year, a 2.5 at the end of the sophomore year, and a 3.0 average

at the end of the junior year.  
The applicant's parents will be requested to submit financial statements for all scholarships, Buschman said. The only exception is the winner of the Alumni Distinguished Scholarship Awards.  
This financial statement must be turned in to College Scholarship Service, Box 176, Princeton, N. J., on or before Jan. 20 of each year, he added.  
All other applications except four-year major scholarships must be postmarked no later than March 1 for consideration for the following year.  
Applicants are judged on the

student's scholastic record and financial need.  
Buschman said, "We don't like to see a good student have to leave our university for financial reasons. When we know about him, we try very hard to find a way for him to stay in school."  
He said there are many students who cannot come to school even when scholarship assistance is offered because the award itself cannot meet their needs.  
Some scholarship students work up to 20 hours a week in addition to carrying a heavy load of class work, he added. Many students also borrow money.  
"It is our feeling that education is important," he said, "and if the student also realizes that learning is important enough to make a 'herculean effort' on his own part to obtain an education by working, borrowing, and using his resources wisely, we want to help him."

LAST 2 DAYS **GLADMER** 65c TO 5:30  
THE GREATEST HUMAN DRAMA THAT THE WORLD HAS EVER KNOWN!  
WEEKDAY MATS \$1.00 • SUN. & EVE. \$1.25 • CHILD. 50c

**Alpha Zeta Meet Set for Thursday**  
Faculty members will become busboys at Alpha Zeta's annual banquet Thursday at 6 p.m. in the Wesley Foundation, 1118 S. Harrison Rd.  
Dr. Paul A. Herbert, retired emeritus professor and president of the National Wildlife Federation, will be the speaker at the get-together for actives and alumni.

Kennedy

(continued from page 2)  
ted Nations," he said, "for it would become a propagandizing forum for Russia, but we should take a whole new look-see at the UN charter to see if it can be revised."  
President Kennedy is trying to be a good president, he said, but he doesn't have a single chance with the group he has in the White House.  
Many of Kennedy's advisors are men who were rejected at the polls by the people, he said.  
"It seems that in order to get a job in the New Frontier you must first have failed in everything else you tried to do," he charged.  
In asking for authority to cut taxes and institute public works at any time without consulting Congress, Kennedy is "attempting to buy the people's votes with the people's money," he said.  
He pointed out that these powers could be used for partisan political purposes at election time.  
Miller accused Kennedy of taking too long to cut off trade relations with Cuba. Even now, he said, Cuba can still do business with our allies.  
As leader of the Western world we should ask our allies to stop doing business with our communist neighbor, he asserted.  
Miller confidently predicted Republican victories in 1962 and 1964 claiming that Republicans all over the nation are enthusiastic and angry.  
"We Republicans will be Americans first and Republicans second he said. We will not downgrade our nation."  
"This is the greatest and strongest nation on earth," he said, and its about time our leaders said so.  
The Republican party has been great for the nation, he

Space Man Hill To Talk On Flight Maneuvers

Dr. L. L. Hill, assistant supervisor, Operational Projects, Space Aero/Astrodynamic Section, will talk Thursday, at 4 p.m., in 404 Electrical Engineering. The title of Hill's talk is, "Flight Maneuvers and Design Concepts of Manned Space Vehicles."  
As assistant supervisor, Operational Projects, Hill has responsibilities for aero/astrodynamic work for all Thor Space Vehicles and other future operational space vehicles. His responsibilities in the past included the Aero Space plane, the "Slomar" and "Permanent Satellite Base and Logistics Study."

said. We don't divide to conquer, we don't set class against class and creed against creed to win.  
"Any government that gets big enough to give us everything is also big enough to take it all away," he said in a slap at big government.  
"Republicans believe that every single person is more important than all government and that no government can do a better job than free men left to their own ingenuity," he said.  
Miller, in a press conference before the luncheon, predicted that former Vice President Richard Nixon would accept the 1964 presidential nomination if it were offered.  
Nixon has insisted that he will serve a full four-year term as governor of California if he is elected this year.

Quality Control To Be Discussed At Kellogg Center

Dr. W. D. Beaten, former statistician of the MSU agricultural experimental station, will discuss quality control at 8 p.m. Thursday in Kellogg.  
He will speak before a joint meeting of the Battle Creek-Kalamazoo section of the American Society for Quality Control and the Great Lakes section of the Forest Products Research Society.  
The public is invited.

Bjorksten Will Address Chemists

Dr. Johan Bjorksten, president of the Bjorksten Research Laboratories, will deliver an open address to the MSU Section of the American Chemical Society Thursday at 8 p.m. in 122 Kedzie Chemical Laboratory.  
He will speak on "Aging, the Neglected Field in Biological Research."  
The reasons for lack of progress in the control of aging and its deleterious effects as well as recent progress in this area will be analyzed and discussed by Bjorksten.

HELD OVER!  
**LUCON**  
1:20 - 4:00 - 6:45 - 9:30  
PAUL NEWMAN  
THE HUSTLER  
PIPER LAURIE - SCOTT JACKIE GLEASON  
NEXT WEEK!  
Light in the Piazza  
CINEMASCOPE • METROCOLOR  
Olivia de Havilland  
Rossano Brazzi

Program Information TV 2-3965  
**MICHIGAN**  
65c TO 5:30 P.M.  
starts FRIDAY  
It was WAR at first sight...  
Rock Hudson & Doris Day  
Tony Randall  
"LOVER COME BACK"  
EDIE ADAMS - JACK OAKIE - JACK KRUSCHEN  
YOUR BEST BUY, CAMPUS CLASSIFIEDS

THURSDAY - FRIDAY - SATURDAY ONLY  
**WASHINGTON'S BIRTHDAY SALE**  
**ODDS AND ENDS**  
ONE OF A KIND and BROKEN LOTS  
**50% to 80% OFF**  
including:  
● SHIRTS ● TIES  
● SUITS ● SWEATERS  
● TOPCOATS ● SPORT COATS  
● HATS ● AND MANY OTHER ITEMS  
SUITES  
Reg. 59.95 to 125.00 now 49.95, 59.95, 69.95 to 105.95  
SPORT COATS  
Reg. 59.95 to 90.00 now 24.95, 29.29, 34.95 to 69.95  
SLACKS  
Reg. 13.95 to 39.95 now 11.99, 14.99, 17.99 to 34.99  
Free Alterations **HOLDEN REID** 30-60-90 Day Charge Accounts  
FRANDOR SHOPPING CENTER  
OPEN 9 a.m. to 9 p.m. MONDAY THRU FRIDAY, SAT. TILL 6 p.m.

PROGRAM INFORMATION CALL ED 2-5817  
**STATE**  
EAST LANSING - PHONE ED. 2-2814  
HOME OF THE BEST IN FOREIGN FILMS  
NOW SHOWING THRU SATURDAY  
FIRST SHOW 7 P.M. - ADULTS 90c  
ALEC GUINNESS  
who delighted you in "Kind Hearts and Coronets"  
in **The Lavender Hill Mob**  
with STANLEY HOLLOWAY  
He stole \$3,000,000 in Gold... and that's a lot of Bullion!  
**the PROMOTER** SHOWN 8:35  
STARTING SUNDAY 1 P.M.  
Their Law is Immorality their enemy is Society!  
and they cheat themselves into damnation!  
**THE CHEATERS**  
with PASCALE PETIT - JACQUES CHARRIER

An invitation to shape your own future...  
Where you can grow...  
General Telephone has tripled its size in the last 10 years - expects to double its size again in the next decade. With expansion such as this, there is an ever-increasing need for larger and more competent management teams.  
In all of its activities—from research and manufacture to the provision of modern communications services in 31 states—General Telephone charts its own course.  
To help you grow with the company, the General Telephone System provides planned training programs, and encourages and aids an individual in self-development. You are given every opportunity to chart your own course in accordance with your interests and attributes.  
Your Placement Director will be pleased to provide you with a copy of our brochure on Management Careers at General Telephone.  
**GENERAL TELEPHONE**  
America's Largest Independent Telephone System

**FINEST ITALIAN FOODS**  
**CASA NOVA NO. 2**  
211 M.A.C. ED 7-1668

Harmful to Fish

Aquatic Pollution Effects Studied

By JAN ROEBKE
Of the State News Staff
There is something fishy in the physiology department according to Dr. P. O. Fromm, assistant professor.

Fromm is engaged in intensive research under the aid of a five year grant from the National Institute of Health, to determine certain physiological norms of fish, with which the effects of aquatic pollution can be compared.

One segment of his research, done in cooperation with Jack Knoll, biological science doctoral candidate, was done on chromium industrial contamination of water.

Although chromium contamination of water is known to be toxic to important food and game fish, past fish studies have been limited to the determination of lethal doses, and little is known of the effects of exposure to sublethal levels.

From such a study in rainbow trout, Knoll and Fromm report that these fish can accumulate chromium in several organs to levels above the environment when exposed to 2.5 milligrams per liter of water, a relatively low level of environmental contamination.

Chromium is of long range significance as a pollutant of streams, lakes and potable water supplies, due to waste disposal by industry. Considerable amounts of the metal in certain forms are often present in the environment of fishes.

Surgical procedures on fish have also been of great concern

to Fromm. Anesthesia is extremely easy and consists of dropping a tiny bit of powder compound into the water. In a few seconds the fish is ready for surgery and is placed on a V-shape trough. A tube is placed into the mouth of the fish through which aerated water flows across the gills.

Study is beginning by Fromm on the blindness of lake trout which is apparently due to a disease. The department is now hoping to get a grant from the National Institute of Health to study the effects of this disease more thoroughly.

Amid Fromm's heavy schedule of 50 percent research and 50 percent teaching, he finds time to do some fishing on his own at Higgins Lake with his wife and two children, Emily 6, and David, 10.

Fromm received his degree in comparative physiology from the University of Illinois in 1954.

Law Prof. To Hold Interviews Feb. 20

Professor David S. Ruder of the School of Law, Northwestern University, will be on campus on Tuesday, Feb. 20, to interview prospective law students.

Professor Ruder will be conferring with the students from 9 a.m. to noon and from 1:30 p.m. to 5 p.m. in Bessey Hall. He may be reached by calling 355-9737.

Placement Bureau

Interviewing at the Placement Bureau Tuesday. Additional information in the Placement Bureau bulletin for the week of Feb. 19 to 23:

General Dynamics Corp. — Electrical, mechanical and metallurgical engineers; applied mechanics, math and physics majors.

Lockheed Missile and Space Co. — Electrical, mechanical, and civil engineers, math, physics and chemistry majors.

The Trane Co. — Mechanical, civil and chemical engineers and all majors from the College of Business & Public Service, Science & Arts; Communication Arts; advertising and journalism majors.

CIBA Pharmaceutical Co. — Chemistry, biology, bacteriology and microbiology majors. The Cooper-Bessemer Corp. — Mechanical, chemical, electrical and metallurgical engineers.

The B. F. Goodrich Co. — Mechanical, electrical, civil and chemical engineers; physics, math, chemistry, marketing and College of Business & Public Service.

Little Lake City School District (Los Angeles) — All elementary education (women only in grades Kindergarten through 3), English 7th & 8th, history 7th & 8th, math 7th & 8th, special education.

Seventh Region U. S. Civil Service (National Labor Relations Board) — Pre-law accounting, economics, political science and all others from the College of Business & Public Service.

Seventh Region (Social Security Administration) — All majors from the Colleges of

Business & Public Service, Science & Arts, Communication Arts.

Seventh Region (U. S. Civil Service Commission) — All majors from the College of Engineering, Business & Public Service, Science & Arts, and Communication Arts.

Scott Paper Co. — Mechanical, chemical, electrical engineers; chemistry, and packaging technology majors. All majors from the College of Business & Public Service.

Caterpillar Tractor Co. — Agricultural, civil, mechanical, metallurgical, electrical and chemical engineers. Applied mechanics and forestry majors.

The Martin Corporation — electrical, mechanical, metallurgical, and civil engineers. Physics, astronomy, applied mechanical, physical chemistry and math majors.

Office of Naval Intelligence — Police administration.

Blood Drive

(Continued from Page 1) Late afternoon Wednesday, about 90 were donated Tuesday and 120 Monday, a total of 210 pints.

Comments from volunteers ranged from, "It's going very slow" to "It's too bad." A student who did give said he would give again this spring. That's the general feeling: once they give, they usually come back again and again.

There is still time left to give, but very little. Students and faculty may give Thursday from 2 to 8 p.m. or Friday—the last day—from 9 a.m. to 3 p.m.

"Pvt. Hargrove"

MARTINSVILLE, Va. (AP)—Pvt. Marion Hargrove finally is getting along all right with the Army.

But he is not the same Marion Hargrove who wrote the World War II best seller about his troubles with the army in "See Here, Private Hargrove." The new Hargrove is PFC. Marion Hargrove of a Martinsville National Guard unit. He has been named honor guardsmen of the month.

GRAND OPENING Audrey's Ceramic Pit, Feb. 16-17-18. Noon to 9 p.m. Free refreshments. Come and browse. See something different. Ceramic studio and gift shop of handcrafts made by local hobbyists. Classes held in ceramic art and sculpturing. 31

SUMMER EMPLOYMENT Kick-off program for camps and resorts. Wednesday, Feb. 28, Union Ballroom, 7:30-9:30 p.m. 39

UNION BOARD RUSH petitions available at UB desk in Union Courthouse until 5 p.m. Friday. 31

CASH REBATE. Receive \$5 by saving Marez register receipts on prescriptions, drugs, cosmetics, baby needs. Save 10% on most national brands. Marez Retail Prescription Center by Frandor, 301 N. Clippert, Phone 485-4355. 34

CHAFF'S HERE, MSU humor. "The Evening Sparty Dropped His Helmet." College, Byness, State, Alexander's drugstores. 30

REAL ESTATE EAST LANSING. Leaving city, owner selling. 1 block from Bailey school. 3 bedrooms, fireplace, 1 1/2 baths, aluminum storm sash, modern kitchen, dishwasher, incinerator, gas heat, newly decorated. \$21,000. ED 2-4275. 31

SERVICE CHILDREN'S PORTRAITS in your home. Tinting a specialty. ED 7-1201 evenings, weekends. 32

TYPING, THESES, manuscripts, term papers, etc. ED 2-0570 after 6 p.m. 34

TERM PAPERS TYPED. Experienced. ED 2-4597. 33

ANN BROWN, typist and multilithing. General typing, term papers, theses, dissertations, duplicating. ED 2-8384. 31

THESES TYPING, printing. IBM Electric typewriters. Editing and proof-reading available. Wonch Graphic Service, 1720 E. Michigan Ave., Lansing, 484-7786. 31

EDIE STARR, Experienced in theses work. IBM. Excellent quality on multilith masters. Call OR 7-8232. 39

TYPING BY WOMAN with 10 years secretarial experience. TU 2-6738. 31

TERM PAPERS TYPED, reasonable rates. TU 2-3069. 44

EXPERT THESES and General Typing. Electric typewriter. Seventeen years experience. One block from Brody, ED 2-5545. 31

TRANSPORTATION NEW YORK-JERSEY, for spring intercession. Chartered Greyhound buses leaving Friday, Saturday and Monday, March 16, 17, and 19. Inquire now! Art Upton, 355-9322. 31

DRIVING TO LOUISVILLE, Kentucky, March 20. Prefer residents of area. Path O'Brien, 355-8571. 32

WANTED Do you have a white elephant in your attic? Sell it through the classifieds. 30

1st Showing Sunday

Men of Emmons Set Up a 'Left Bank'

Who says college students neglect aesthetics and are content to concentrate on the material things of life?

Webb Marris, Grand Rapids junior majoring in art education, and Ed Michalski, Cheektowaga, N.Y. senior in hotel management, are organizing an art exhibit to be presented in the lobby of Emmons Hall. The show will be Sunday from 2 to 5:30 p.m.

Budding amateur artists will exhibit paintings, drawings, and sketches done in various media.

A dozen men from Emmons will contribute what they believe to be their best works. A minimum of 30 pieces will be on display, according to Marris.

Free coffee will be served to those who view the exhibit, said Michalski.

Marris and Michalski are hoping for a large turnout at the exhibit. "We want to show the students and faculty of the University that culture is not dead among Michigan State students."

Entries in the exhibit are limited to works of the men from Emmons, Michalski said.

"Now a U.S. space capsule has circled the globe carrying a robot. But so far no magazine has bought exclusive rights to the robot's story."—Mark Nelson, Fountain Inn (S.C.) Tribune.

Real Estate Man To Speak Thursday

Bert Saunders, executive vice president of the Michigan Real Estate Assn., will speak at a combined meeting of the 2x4 Club and the NAHB Thursday at 7:30 p.m. in the Forestry Cabin.

His topic will be reflections of real estate on the building industry.

CAMPUS CLASSIFIEDS LOW COST

DISCOUNTS ON ALL LPs NEEDLES, TAPE DISC SHOP

Varsity Drive In 1227 E. GRAND RIVER OPEN EVERY DAY 5:00 P.M. DELIVERY SERVICE MON. - SAT. 8:30 P.M. - 1:30 A.M. SUNDAY 5:00 P.M. - 1:30 A.M. ED 2-6517

CAMPUS CLASSIFIEDS DEADLINES: 1 p.m. Day Before Publication for Tues., Wed., Thurs., and Fri. Editions. Deadline for Mon. Edition: 1 p.m. Fri. PHONE: 355-8255 or 355-8256

Automotive, For Rent, Personal, Employment, For Sale, Real Estate, Service, Transportation, Wanted. Includes listings for cars, apartments, jobs, and services.

How safe is our investment in ARAB OIL? U.S. oil companies have sunk millions into a huge Midwest combine. But now this combine is under fire from a powerful Arab sheik. In this week's Post, you'll learn how the threat of Arab nationalization is affecting American interests. And how Red price cutting will influence U.S.-Arab relations.

FREE One Gallon Of BRIGHT SAIL BLEACH or ANGEL SOFT TISSUES. Includes coupon for A&P stores.

AP FRYER'S Government Inspected. Pork Roast 39c/lb, Sausage 49c/lb, Bacon 99c, Broccoli 29c, Carrots 29c, Mushrooms 59c, Macintosh Apples 29c, Freestone Peaches 99c, Pinconning Sharp Cheese 49c, Sherbet 59c, Ann Page Salad Dressing 45c, Jane Parker Bakery features Italian Bread, Raisin Pie, Spanish Bar Cake, Pumpkin Pie.

**Sweethearts Pinned**

**ALPHA EPSILON PI**  
John Durando, Brooklyn, N.Y., senior, to Kathy Buckley, Brooklyn, N.Y.

**ALPHA SIGMA PHI**  
E. Dan Woodruff, Detroit senior, to Othega Perkins, Kentucky State University freshman.

**BETA THETA PI**  
Brooks Brenneis, Lansing senior, to Shirley Hall, Lansing sophomore and Delta Zeta.

**DELTA CHI**  
Dick Frank, Harbor Beach junior, to Diane Martin, Louisville, Ky. freshman.

Fred Hoffecker, Okemos junior, to Karen Fenske, Detroit sophomore.

Jerry Trantham, Lansing sophomore, to Nancy Stocker, Glenn Cove, N.Y. freshman.

**DELTA SIGMA PI**  
Larry Schlappfer, Flemington, N.J. senior, to Sylvia J. Ennege, Grand Haven freshman.

Robert Ritter, Hamilton, N.Y. senior, to Nancy Solomon, Roseville sophomore.

Richard E. Carson, New Buffalo sophomore, to Kathryn K. Lindig, Glenside, Penn., junior

**DELTA TAU DELTA**  
Rod Spence, Saginaw senior, to Marilyn Hart, University of Michigan senior and Kappa Kappa Gamma.

Doug Shadwick, Gahanna, Ohio senior, to Sue Kneeland, Battle Creek sophomore.

Jim Dobrei, Fraser senior, to Judy Osborn, Bloomington, Ill. senior and Alpha Phi.

Bob Benton, Grosse Pointe junior, to Dianne Baldwin, Grosse Pointe junior.

**FARM HOUSE**  
Robert Harter, Carson City senior, to Linda Wilt, Owosso sophomore.

James Becker, St Johns senior, to Janet Stoy, Dewitt.

Dale Sheltrown, Gladwin senior, to Evie Johnson, West Branch senior.

Duane Heisler, Springport senior, to Jennifer Rice, Midland.

**LAMBDA CHI ALPHA**  
Tom Yonker, St. Joseph junior, to Mary Durell, Hamburg, N.J., junior and Delta Gamma.

**PHI KAPPA SIGMA**  
Walt Krohn, Dearborn junior, to Lynne Burniac, Detroit.

Tom McCue, Minneapolis, Minn. sophomore, to Julie Armstrong, William Woods College senior.

William Mann, Traverse City junior, to Mary Hunsberger, Traverse City freshman.

Thomas Smith, Silver Spring, Md. junior, to Linda Watson, Napoleon, Ohio sophomore.

Bob Kemp, Grand Rapids sophomore, to Sally Miller, Three Rivers senior and Delta Gamma.

Paul Spinka, Oak Lawn junior, to Gail Kostbade, Chicago, Ill. junior.

Peter W. VanWart, Ridge-wood, N.J. sophomore, to Nan Nelson, Virginia Intermont College junior.

James Petrie, Dearborn senior, to Cel Petrinie, Sharon, Penn. senior.

Charles Klatt, Belding junior, to Sharon Cross, Kalamazoo sophomore.

**PHI KAPPA TAU**  
D. Ray Engleman, Eaton Rapids junior, to Margo Findlay, Grosse Pointe Woods sophomore and Delta Zeta.

Dick Gilberto, Lombard, Ill. sophomore, to Sarah Spacey, Columbia, Miss. freshman.

**PSI UPSILON**  
Nick Bodor, Birmingham junior, to Marcia McKay, Dearborn senior and Sigma Kappa.

**SIGMA ALPHA EPSILON**  
Woody Fisher, Cleveland, Ohio graduate student, to Jeanie Bullock, Bethesda, Md. sophomore.

**SIGMA ALPHA MU**  
Robert Schwartz, Detroit senior, to Sondra Rose, Detroit junior.

Yale Levin, Detroit senior, to Anna Kovinsky, Windsor senior.

**SIGMA CHI**  
Dan McNeal, Stevenson senior, to Carol Higgins, Pleasant Ridge senior and Alpha Phi.

Jerry Lindeborg, Dearborn senior, to Marty Johnson, Alma junior and Alpha Phi.

**SIGMA NU**  
Dick Sietz, Bellevue junior, to Jane Patris, Bellevue freshman.

**SIGMA PHI EPSILON**  
Al Bivens, Fairfield, Conn. senior, to Karen Krause, Lansing senior and Alpha Xi Delta.

**SIGMA THETA EPSILON**  
Cal Lamoreaux, Holland senior, to Jenny Brown, Coloma sophomore.

**THIETA CHI**  
Bob Hood, Detroit junior, to Judy Kelly, Detroit freshman.

**ZETA BETA TAU**  
Peter Lededer, Chicago junior, to Judy Smith, Portland, N.Y. junior and Kappa Delta.

Melvyn Saperstein, Detroit senior, to Nancy Bogart, Scarsdale, N.Y. freshman.

**ALPHA PHI**  
Marty Hagen, Saginaw junior, to Gene Weber, General Motors Institute junior.

**DELTA ZETA**  
Mary Jo Erickson, Midland junior, to Sam McClurg, Albion College junior and Delta Tau Delta.

**Nancy Is Welcomed On Slopes**

Nancy Ann Fleming, Montague freshman and Miss America 1961, took the first official ride on Manistee Winter Sports Area's new T-Bar lift last Saturday.

To top off the day's festivities, Miss Fleming was special guest at a Board of Commerce Banquet where over 500 people heard her relate experiences of her year as Miss America.

A ski beginner, Miss Fleming took lessons from head ski instructor, Wayne Walter. She also took the first scenic tour in the Ski Area's snow-weasel, a tracked vehicle. Weasel rides, a new attraction, offer non-skiers an opportunity to ride through wooded trails, topped by a trip to the summit of the Udell Hills.

Miss Fleming received a season's ticket and an offer of more ski instructions. Like most beginners, she was enthused about the sport and hopes to return to slopes as soon as possible.



**FAMOUS SKI BUNNY**—Nancy Ann Fleming, Montague freshman presided at festivities at the Manistee Ski Area Saturday. The former Miss America took lessons from chief ski instructor, Wayne Walter.

**MSU Attracts Students From Many Different Places**

By LINDA GODFREY, Assistant Women's Editor

Where is everyone going? Throughout the ages this has been the cry. Why they are going—where they are going has been the question in close second place.

Michigan State is a pretty popular place to us Michigan-ites, but the real test of anything's true worth is how it looks to "foreigners". State attracts a large number of students from far away places. Just why and how they chose MSU aroused my curiosity and so I looked into the whys and hows.

About this time of year I begin to have definite yearnings for warmth and anything south of the border looks fine to me.

To my surprise and disappointment, they were for the most part wild about snow.

Sally Coffman, who comes from the warmer regions of Kentucky, likes our snow. One of her reasons for coming to MSU was because of the loca-

tion and another because of the art school here.

Penny Skells hails from sunny, sunny, sunny, Hawaii, and I quote, "loves snow." Last year Penny attended the University of Hawaii. She is majoring in Interior Design.

A boy from Texas, who wishes to remain anonymous, had the "right" attitude.

He chattered out while huddled under about six inches of insulated underwear, "just think how much more you Northerners appreciate spring, then we Southwesterners do."

Gary McTaggart, from the British West Indies, doesn't really care for all this cold. In the West Indies the temperature is 85 degrees. Gary, a pre-med major, decided on MSU after talking to Dr. Navel from the Kellogg Center, who was staying in a hotel on the island.

**Party Line**

**BUSY DAZE**

By Cathie M. Mahoney

MSU men and their dates won't have to search desperately for things to do this weekend because the calendar contains several social events.

The Blackfoot-Whitefoot Ball is a traditional dance to mark the standing rivalry between the Alpha Tau Omega and Sigma Nus. The dance began at Virginia Military Institute where the two fraternities were founded. Intense competition between them eventually lead to the semi-formal dance.

The Blackfoot (ATO's) - Whitefoot (Sigma Nus) Ball will be held Friday night at the Capital Park Motel. Warren Kimler will provide dance music.

A "His and Her" theme will

Defensive end Don Joyce of the Minnesota Vikings has been playing pro football for the past 11 seasons. A 255-pounder, he went to Tulane.

Quarterback Charlie Conerly of the New York Giants has been playing National League football 14 seasons.

**PHI KAPPA TAU**  
D. Ray Engleman, Eaton Rapids junior, to Margo Findlay, Grosse Pointe Woods sophomore and Delta Zeta.

Dick Gilberto, Lombard, Ill. sophomore, to Sarah Spacey, Columbia, Miss. freshman.

THE MORE YOU TELL... THE QUICKER YOU SELL! READ CLASSIFIEDS!

**SEARCHING FOR** the best thesis typing and printing

**WONCH GRAPHIC SERVICE**  
1720 E. Michigan  
Lansing 484-7786

HOW YOU CAN **SURVIVE**

**A NUCLEAR WAR!**  
9 out of 10 people can live through a nuclear attack, says scientist Edward Teller. But there'll have to be plenty of warning—and plenty of shelter. In this week's Post, he maps out a 4-point plan for survival. Tells how you should stock the ideal shelter. And which people stand the best chance of survival.

The Saturday Evening **POST**

**Engagements Announced**

**ALPHA PHI**  
Nancy French, Ann Arbor senior, to Bill McIntosh, Michigan State graduate and Delta Sigma Phi.

Marcia Lamoreaux, East Grand Rapids senior, to Larry Osterink, East Grand Rapids senior and Delta Tau Delta.

Jan Ellars, Saginaw senior, to Denny Laufercombe, Michigan State graduate and Beta Theta Pi.

Martha Werme, Kalamazoo senior, to Dick Howard, Bay City junior.

**DELTA GAMMA**  
Janice Miller, Williamston senior, to Charles E. Mann, Michigan State graduate and Phi Kappa Sigma.

**DELTA ZETA**  
Barbara Turner, Indianapolis senior, to John Lindhout, Grand Rapids.

Marilyn Brown, Vassar junior, to Frances Cataldo, Michigan State graduate.

Barbara Miller, Detroit sophomore, to Ed Lucas, Port Huron senior and Phi Kappa Psi.

**GAMMA PHI BETA**  
Barbara Stark, Manomenee junior, to Frank Stengel, New York, N.Y., senior and Sigma Chi.

Lynn Watrick, Detroit senior, to Fred Sheppard, Buffalo, Michigan State graduate assistant.

**SIGMA KAPPA**  
Anne Cope, Birmingham senior, to Hillar Falk, Jackson senior and Sigma Alpha Epsilon.

Sharon Steeby, Muskegon senior, to John Garside, Kalamazoo senior and Phi Delta Theta.

**VAN HOUSEN HALL**  
Judy Harrell, Saginaw junior, to Chris Valentine, Drayton Plains senior and Sigma Phi Epsilon.

**WEST YAKELEY HALL**  
Judy Grist, Dayton, Ohio sophomore, to David Stafford, Ohio University sophomore.

Mary Costello, Flint sophomore, to Dick McGahey, Flint. Mildred Bossman, Saginaw sophomore, to Lowell Butman, Roscommon junior.

**ALPHA EPSILON PI**  
Richard Brown, Rego Park, N.Y. junior, to Penny Schwartz, New York, N.Y.

**ALPHA KAPPA PSI**  
Terry Smith, Jackson senior, to Judy Reed, Lansing.

John Kleberg, Chesterton, Ind. senior, to Nancy White, Jamestown, N.Y.

**DELTA CHI**  
Dick Jackson, Midland senior, to Barb Baheria, Northeastern Business College graduate.

Ron Rarzych, Jackson senior, to Nancy North, Sienna Heights graduate.

**ZETA BETA TAU**  
Jay Lerner, Milwaukee, Wis. sophomore, to Lois Gardell, Milwaukee, Wis.

**McDonald's**  
15¢ HAMBURGERS

1 BLOCK EAST OF CAMPUS  
OPEN TILL MIDNIGHT WEEKDAYS 1 A.M. FRI. & SAT.  
ALSO AT  
2120 N. LARCH US 27 & 4700 S. CEDAR US 127

**WHAT EVER YOU NEED for your car**

Mufflers - Tail Pipes - Exhaust Pipes  
**INSTALLED**  
Complete Shop Service  
Rebuilt Motors and Transmissions  
**INSTALLED**  
Speed Equipment - Accessories  
DISCOUNTS TO STUDENTS AND FACULTY

**KAMIN'S AUTO PARTS**  
526 N. LARCH  
IV 4-4596

Mon. - Fri. 8 - 6	Saturday 8 - 5	Sunday 9 - 1
----------------------	-------------------	-----------------

**Rose Pique Set of Matched Lingerie**

The prettiest way to greet the day, in our rose print breakfast coat of crisp, cotton pique...velvet banded and ruffle trimmed, 8.98 Companion shift gown of easy-care nylon-dacron-cotton...with rose pique bodice, velvet ribbon and Val lace trimmed. White with rose, S.M.L. sizes. 5.98

Thursday Store Hours  
9:30 a.m. to 5:30 p.m.

**Jacobson's**

3 for 2.85

**Special**

**NYLON TRICOT BRIEFS...**

in several styles! White, soft pink, blue or beige with pretty pastel or white floral embroidery, lace, or satin applique trim! Wonderful value at this low price! Stock up now for future needs, and save!