

Michigan State News

EAST LANSING, MICHIGAN—WEDNESDAY, NOVEMBER 12, 1958

CLOUDY AND COOL
Partly cloudy and cooler today with northerly winds 8-15 m.p.h. High today 45-55.

NEED MORE POINTS
Party faithful recalled his last evening session of days gone by at a party yesterday. He is at a party of an off-duty party which has been the sportsman's party. See story on page 2.

VOL. 50, No. 89

PRICE 5 CENTS

KHRUSHCHEV PUTS SCARE INTO WEST

Red Chief Proposes Berlin Split

Soviet Aggression May Precede War

WASHINGTON (AP)—The Berlin showdown effort by Soviet Premier Nikita Khrushchev will probably carry the greatest danger of all-out war between the Soviet and the Western blocs that the world has seen for a long time, Associated Press correspondent John Hightower predicted Tuesday.

These are the estimates made here Tuesday of the future significance of the latest moves in Moscow and Western capitals over the fate of divided Berlin.

American officials take seriously Khrushchev's Monday announcement that the Russians intend to turn over administration of East Berlin to the communist authorities of East Germany, writes Hightower.

The timing of his declaration may have been determined by interest in fostering Soviet ties with communist Poland. Russian attempts to settle German issues could be construed in Poland as being designed to pave the way for peaceful settlements and a demilitarized zone along the cold war front in Europe, analyzes Hightower.

But the best informed authorities here said Tuesday they had no doubt that in the long run Khrushchev will undertake the serious attempt to force the Western Powers out of Berlin and build up the prestige of the Soviet dominated regime there by making the East German government supreme in the city.

The United States, Britain and France have occupied the city jointly with Soviet Russia since the end of World War II, and U. S. and British spokesmen Monday night turned down Khrushchev's demand for an end to the occupation.

The State Department reasserted the U. S. policy of fighting if necessary to preserve Western interests in the city which is entirely surrounded by East German territory.

Khrushchev's latest maneuver had been foreshadowed by East German propaganda attacks on the Western position in Berlin. However, some authorities here see it significantly against a background of failures by the Soviet communist high command during the past year of "Sputnik diplomacy" to make any really important or profitable gains in the drive to expand Red power, said Hightower.

While it is true that the Soviets have built up their influence in the Middle East at the expense of Western power since 1955, for example, it is also true that the most recent crisis centering on the revolt in Iraq and the landing of U. S. and British troops in Lebanon and Jordan did not produce any great net gain for Moscow, Hightower concluded.



THE FACULTY STRING QUARTET played its first music department performance of the year in the Music Aud Tuesday night. The quartet is known for its technical finesse and its interpretative subtlety and brilliance. All members are artist-teachers.

Russia, Poland Call For Summit Convo

Agenda to Include Solution Of Disarmament, Security

MOSCOW (AP)—A new call for a Summit Conference was sounded Tuesday night by the Soviet Union and Poland.

They said its aim would be to solve problems of disarmament and strengthen world security. (Moscow Radio announced meanwhile that the Soviet Union told the United States in a note that the Geneva talks on prevention of surprise attacks must be linked to disarmament.)

A joint communique was issued here and in Warsaw after the windup of Moscow talks between Premier Khrushchev and Polish Communist Chief Vladyslaw Gomulka.

It said: "The delegation of the Polish People's Republic decidedly supports the Soviet proposal for a Summit Conference to examine and solve the most pressing problems of disarmament and to decide on steps to be taken to strengthen the security of Europe and the rest of the world."

In addition to making a bid for Summit talks, the communique said it is necessary to strengthen the Warsaw pact, the East European alliance set up as a counterbalance to NATO. Such action is necessary, the statement said, because of "delaying and dodging talks pursued in the first place by the U. S. government." It did not say what steps might be taken to strengthen the Warsaw line-up.

It declared the North Atlantic Treaty Organization seeks to turn Western Europe into a "nuclear arms arsenal."

"The rapidly advancing militarization of West Germany, including supplying of West German armed forces with atomic weapons and rockets, represents a threat to the peace and security of Europe, the statement said.

Aud Card Lists Two 1-Act Plays

Drama Students Plan Entire Show

Two original one-act plays will be presented tonight at 7:15 in the Studio Theater, 49 Aud. These plays have been directed by students in Dr. Roger Busfield's play directing class.

The first presentation will be "The Outing," a comedy written by Mrs. Rita Burney, wife of Communication Skills Instructor, Dr. Burney. In the cast are Mary Barrone, Grand Rapids freshman; Roger Vragel, Dearborn senior; Ron Derrico, Buffalo, N. Y., sophomore; Allison Mills, Wheeler freshman, and Robert Drusin, Scarsdale, N.Y., freshman.

The director of "The Outing" is William Sakaloukas, Grand Rapids graduate student.

The second presentation of the evening will be "No More Than Gentle Hands," a drama by James Young, a doctoral candidate from the University of Michigan. Playing Mrs. Grant, an elderly widow, will be Nancy French, Ann Arbor freshman.

As her invalid son, Fred, is Brent Dugford, Marlette freshman. Liz, her next door neighbor, will be played by Janet Jones, East Lansing freshman. Gilbert Ziff, Bronx, N.Y., junior; James Rowe, Eaton Rapids freshman, and Dave Conley, Grand Rapids junior, will play Milton, John and Alan, the rest of Mrs. Grant's family. "No More Than Gentle Hands" is directed by Harold Edwards, Lansing senior.

These two original plays have unusual styles and should provide tonight's audience with a different type of entertainment.

Mrs. Eirene White, a labor member of the British parliament, will attend a luncheon held in her honor in the Union today by the Viet-Nam project.

Guests at the luncheon will include Dr. John Messenger, Prof. William Lindquist, Prof. Roger Westcott.

Mrs. White's talk before the International Relations Club last night was cancelled because her arrival was delayed by the airlines strike.

Mrs. White, whose home is in East Flint, England, is chairman of the Fabian Society, a socialist group in Great Britain. Her major interest is in African affairs and legislation pertaining to racial issues.

Possible War Plot?

Hussein to Accuse Syria At UN Security Council

AMMAN (AP)—Premier Samir Rifai told a cheering emergency session of Parliament Tuesday night Jordan will accuse Syria of an act of aggression for intercepting King Hussein's vacation-bound plane.

Thunderous applause greeted his announcement that the government would bring the case before the UN Security Council and ask Secretary General Dag Hammarskjold to take quick measures for a debate.

Parliament then unanimously adopted a resolution giving the government a free hand to take any action necessary in the new crisis.

The Premier spoke as the country went on a spree of celebration.

A national holiday was declared to celebrate the adventurous young king's escape from what he charged was an attempt to kidnap or kill him in a flight over Syria Monday.

Hussein, who celebrates his 24th birthday on Friday, emerged as a daring Moslem hero for defying the Syrian MIG fighters and making a successful getaway.

Some officials suggested President Nasser's United Arab Republic — of which Syria is a province — attempted to kidnap the pro-Western king and force him to abdicate in favor of a friendly regime.

There were clear indications that if this was the plot — and the U.A.R. denies any such plot — that it backfired. The young monarch gained popular support for his determined stand of independence from Nasserism.

While Jordans celebrated in a carnival spirit mixed with bitter demonstrations against Syria, two new British jet fighters flew into Amman.

They are the first of 12 Hawker Hunters being given Jordan under the U.S.-British military aid program.

King Hussein flew his own helicopter from the palace grounds to Amman airport to inspect the jets which were brought by British pilots from Cyprus.

The king, wearing a grey double breasted suit, chatted with U. S. Charge D'Affaires Thomas Wright and his own personal pilot, British R.A.F.

Two MSU fraternity men admitted breaking and entering the Alpha Delta Pi sorority house at midnight Monday and "borrowing" trophies valued at \$100.

They returned the trophies Tuesday morning and gave themselves up to East Lansing police. The men were released without criminal charges being brought against them. The matter was referred to the dean of students office.

The Delta Gamma house was also hit Monday night by an unknown party while the members were having Wolverine pictures taken. Everyone was absent including the housemother. All the trophies were missing from the livingroom.

According to PanHel President Karen Fox, there is hardly a house on campus that has its own trophies, diaries and silverware.

Last spring PanHel and IFC passed a recommendation that there would be no more stealing pranks between houses. This ruling was intended to benefit all Greek living units. Apparently, most houses have either forgotten these recommendations or are disregarding them completely.

IFC plans to take more definite action and PanHel will cooperate with stricter measures. It is recommended that all possessions be returned to the rightful houses before the new ruling is passed.

2 MSU Men Admit Theft Of Trophies

Greeks Accused Of Petty Pranks

Two MSU fraternity men admitted breaking and entering the Alpha Delta Pi sorority house at midnight Monday and "borrowing" trophies valued at \$100.

They returned the trophies Tuesday morning and gave themselves up to East Lansing police. The men were released without criminal charges being brought against them. The matter was referred to the dean of students office.

The Delta Gamma house was also hit Monday night by an unknown party while the members were having Wolverine pictures taken. Everyone was absent including the housemother. All the trophies were missing from the livingroom.

According to PanHel President Karen Fox, there is hardly a house on campus that has its own trophies, diaries and silverware.

Last spring PanHel and IFC passed a recommendation that there would be no more stealing pranks between houses. This ruling was intended to benefit all Greek living units. Apparently, most houses have either forgotten these recommendations or are disregarding them completely.

IFC plans to take more definite action and PanHel will cooperate with stricter measures. It is recommended that all possessions be returned to the rightful houses before the new ruling is passed.

Teaching the Handicapped

Special Education Program at MSU

By MARCIA PETRE

While most children are playing and frolicking in the brisk autumn weather these days, there is a small group, unnoticed by the majority, which sits alone and desolate, oblivious to the exciting sights and sounds perceived by others of its age group. In Michigan this fraction numbers over 27,000—all mentally retarded.

Yet, not everyone turns a blind eye toward this group and its problems. There are those who design their entire life for the purpose of helping these mentally ill children. Many of these people gain their training for this kind of work under Michigan State's special education program. Included in this training program are teachers of the blind, deaf, crippled, retarded and maladjusted.

In a regular, four-year, undergraduate program special education majors will graduate with teaching certificates for both elementary and special education, enabling them to teach in either type of classroom.

In considering the problem of the mentally handicapped, for example, special educators are aware of several things. The child involved is first of all, a person. He has just as much right to life as others.

Secondly, he is retarded, and because of this, he needs some special consideration. This child also has parents who are faced with a bewildering and frustrating problem.

When parents understand the problem, they lose all fear and frustration and begin to meet the retarded child's needs. But, meeting these needs is a joint effort and special education plays a vital role. More attention must be given to this role, for during the 16-17 school year, approximately 2,250 or 23 percent of these children were enrolled in special education programs in the public schools.

Teachers are critically needed in areas dealing with the handicapped. Teachers who can understand abilities, develop plans and interpret the child's



State News Photo by Dave Welton shows the decorations for the annual PanHel-IFC dance entitled, "Heaven in Hades." are (l-r): Chuck Martell and John Johnson, dance co-chairmen, and Eddie Bruchner and Ron Brown, decorations co-chairmen.

Stated Tonight

Fall Rush Convocations To Orientate Rushees

Fall Convocations for all coeds interested in sorority rush will be held tonight in the Music Aud. The alphabetical groupings are: A-H 6:30, I-Q 7:45, and R-Z 9:00.

The convocations are sponsored by PanHellenic Council and are designed to acquaint the prospective rushees with the program of Fall Rush planned for the coming weekend, Saturday and Sunday afternoons.

Attendance at this meeting is required for all coeds planning to rush winter term. Coeds are invited to bring their \$1 rush fee which will be used to help cover rush expenses like the rush booklet and I.B.M. cards.

Lynn Fox, PanHellenic president will open the program with an explanation of sorority life and its advantages and opportunities it offers the coed.

The rush counseling system will be explained by Sharon Jones, first vice-president. During this meeting will be held. This is a new addition to convocations and will help explain rush party procedures to the coed.

Joe Pickard, second vice-president, will discuss the rush counseling system. At this time the rush booklet which will include the names of the sorority houses and their rush parties will be distributed.

The convocation will conclude with a meeting of the PanHellenic Council which will give the coed more information.

Montgomery: Memoirs Not Meant As Insult

ROME (AP)—Field Marshal Viscount Montgomery moved Tuesday to make peace with Italians angered because his memoirs questioned the fighting will of their soldiers in World War II.

He sent word his remarks "were not intended to reflect in any way on the courage of the Italian soldier." But the British war hero did not retract his statements. At his country home in Hampshire, Montgomery said his letter was an explanation.

Montgomery communicated through Sir Ashley Clarke, British ambassador to Rome. The marshal wrote the coed: "I understand that the Italian government is disturbed about certain extracts from my memoirs, which are being serialized in the press. I am distressed that any words of mine should cause offense to a nation whose servant I have been (in NATO) for some years past. During those years, I have watched the growth of the Italian army. This gradual growth has resulted in a very high standard of training and discipline. Indeed, in my view the Italian army is today as good as any army in NATO."

"Any remarks I made in my memoirs were not intended to reflect in any way on the courage of the Italian soldier."

Hop Sets 2 New Band Contest Clues

The J-Hop publicity committee has announced a mistake in the contest clues of their name. The contest clues are to be changed to "Hop Sets" and "Hop Sets 2 New Band Contest Clues".

The J-Hop publicity committee has announced a mistake in the contest clues of their name. The contest clues are to be changed to "Hop Sets" and "Hop Sets 2 New Band Contest Clues".

Wolverine Pix

Winning picture will be taken tonight in the Tower Room according to the following schedule:

- 6:00 Delta Gamma House
- 6:15 Phi Kappa Phi
- 6:30 Phi Kappa Phi
- 6:45 Phi Kappa Phi
- 7:00 Phi Kappa Phi Student Assn.
- 7:15 Phi Kappa Phi
- 7:30 Phi Kappa Phi
- 7:45 Phi Kappa Phi
- 8:00 Phi Kappa Phi
- 8:15 Phi Kappa Phi
- 8:30 Phi Kappa Phi
- 8:45 Phi Kappa Phi
- 9:00 Phi Kappa Phi
- 9:15 Phi Kappa Phi
- 9:30 Phi Kappa Phi
- 9:45 Phi Kappa Phi
- 10:00 Phi Kappa Phi
- 10:15 Phi Kappa Phi
- 10:30 Phi Kappa Phi
- 10:45 Phi Kappa Phi
- 11:00 Phi Kappa Phi

factories left

2,000 student directors in the Union

have and have all the vital

for Christmas cards

and

Read Daily by MSU's 25,000 Students and Faculty... Michigan State News is published by students of Michigan State University...

Williams Assumes 'Governor's Role?'

AS GOV. G. MENNEN Williams surveys his recent unprecedented election victory, we hope that he will remain dedicated to the betterment and welfare of Michigan...



On Resolution 12 AUG Gives Canoe Views

To the Editor: Last week, the State News gave an able demonstration of the so-called "power" of the opinion column...

Commentary Originality Undone

STUDENT CONGRESS got together last week and, as a group, managed to foul up. A few "irate" individuals got together Sunday night and turned it into a trend...

Crossword Puzzle section with a grid and clues. Clues include: 1 Ship's diary, 4 Twink, 7 Think, 10 Surfaces, 11 Make a mistake, 12 Day, 13 M. D., 14 Ending, 15 Condemned, 17 Require, 18 Article, 19 Engage, 20 Spiteful, 21 Pious, 22 Souper, 23 Mean, 24 Naive, 25 Waggle, 26 By, 27 Artificial, 28 Medical, 29 Medals, 29 Ounce of, 22 Dispute, 20 Surfaces, 26 Lamb's own name, 27 Toward, 28 Land, 29 Mistletoe, 30 Lamb, 31 Nourished, 32 Sticks, 33 Engage, 34 Pious, 35 Souper, 36 Mean, 37 Naive, 38 Waggle, 39 By, 40 Artificial, 41 Medical, 42 Medals, 43 Ounce of, 44 Dispute, 45 Surfaces, 46 Lamb's own name, 47 Toward, 48 Land, 49 Mistletoe, 50 Lamb, 51 Nourished, 52 Sticks, 53 Engage, 54 Pious, 55 Souper, 56 Mean, 57 Naive, 58 Waggle, 59 By, 60 Artificial, 61 Medical, 62 Medals, 63 Ounce of, 64 Dispute, 65 Surfaces, 66 Lamb's own name, 67 Toward, 68 Land, 69 Mistletoe, 70 Lamb, 71 Nourished, 72 Sticks, 73 Engage, 74 Pious, 75 Souper, 76 Mean, 77 Naive, 78 Waggle, 79 By, 80 Artificial, 81 Medical, 82 Medals, 83 Ounce of, 84 Dispute, 85 Surfaces, 86 Lamb's own name, 87 Toward, 88 Land, 89 Mistletoe, 90 Lamb, 91 Nourished, 92 Sticks, 93 Engage, 94 Pious, 95 Souper, 96 Mean, 97 Naive, 98 Waggle, 99 By, 100 Artificial, 101 Medical, 102 Medals, 103 Ounce of, 104 Dispute, 105 Surfaces, 106 Lamb's own name, 107 Toward, 108 Land, 109 Mistletoe, 110 Lamb, 111 Nourished, 112 Sticks, 113 Engage, 114 Pious, 115 Souper, 116 Mean, 117 Naive, 118 Waggle, 119 By, 120 Artificial, 121 Medical, 122 Medals, 123 Ounce of, 124 Dispute, 125 Surfaces, 126 Lamb's own name, 127 Toward, 128 Land, 129 Mistletoe, 130 Lamb, 131 Nourished, 132 Sticks, 133 Engage, 134 Pious, 135 Souper, 136 Mean, 137 Naive, 138 Waggle, 139 By, 140 Artificial, 141 Medical, 142 Medals, 143 Ounce of, 144 Dispute, 145 Surfaces, 146 Lamb's own name, 147 Toward, 148 Land, 149 Mistletoe, 150 Lamb, 151 Nourished, 152 Sticks, 153 Engage, 154 Pious, 155 Souper, 156 Mean, 157 Naive, 158 Waggle, 159 By, 160 Artificial, 161 Medical, 162 Medals, 163 Ounce of, 164 Dispute, 165 Surfaces, 166 Lamb's own name, 167 Toward, 168 Land, 169 Mistletoe, 170 Lamb, 171 Nourished, 172 Sticks, 173 Engage, 174 Pious, 175 Souper, 176 Mean, 177 Naive, 178 Waggle, 179 By, 180 Artificial, 181 Medical, 182 Medals, 183 Ounce of, 184 Dispute, 185 Surfaces, 186 Lamb's own name, 187 Toward, 188 Land, 189 Mistletoe, 190 Lamb, 191 Nourished, 192 Sticks, 193 Engage, 194 Pious, 195 Souper, 196 Mean, 197 Naive, 198 Waggle, 199 By, 200 Artificial, 201 Medical, 202 Medals, 203 Ounce of, 204 Dispute, 205 Surfaces, 206 Lamb's own name, 207 Toward, 208 Land, 209 Mistletoe, 210 Lamb, 211 Nourished, 212 Sticks, 213 Engage, 214 Pious, 215 Souper, 216 Mean, 217 Naive, 218 Waggle, 219 By, 220 Artificial, 221 Medical, 222 Medals, 223 Ounce of, 224 Dispute, 225 Surfaces, 226 Lamb's own name, 227 Toward, 228 Land, 229 Mistletoe, 230 Lamb, 231 Nourished, 232 Sticks, 233 Engage, 234 Pious, 235 Souper, 236 Mean, 237 Naive, 238 Waggle, 239 By, 240 Artificial, 241 Medical, 242 Medals, 243 Ounce of, 244 Dispute, 245 Surfaces, 246 Lamb's own name, 247 Toward, 248 Land, 249 Mistletoe, 250 Lamb, 251 Nourished, 252 Sticks, 253 Engage, 254 Pious, 255 Souper, 256 Mean, 257 Naive, 258 Waggle, 259 By, 260 Artificial, 261 Medical, 262 Medals, 263 Ounce of, 264 Dispute, 265 Surfaces, 266 Lamb's own name, 267 Toward, 268 Land, 269 Mistletoe, 270 Lamb, 271 Nourished, 272 Sticks, 273 Engage, 274 Pious, 275 Souper, 276 Mean, 277 Naive, 278 Waggle, 279 By, 280 Artificial, 281 Medical, 282 Medals, 283 Ounce of, 284 Dispute, 285 Surfaces, 286 Lamb's own name, 287 Toward, 288 Land, 289 Mistletoe, 290 Lamb, 291 Nourished, 292 Sticks, 293 Engage, 294 Pious, 295 Souper, 296 Mean, 297 Naive, 298 Waggle, 299 By, 300 Artificial, 301 Medical, 302 Medals, 303 Ounce of, 304 Dispute, 305 Surfaces, 306 Lamb's own name, 307 Toward, 308 Land, 309 Mistletoe, 310 Lamb, 311 Nourished, 312 Sticks, 313 Engage, 314 Pious, 315 Souper, 316 Mean, 317 Naive, 318 Waggle, 319 By, 320 Artificial, 321 Medical, 322 Medals, 323 Ounce of, 324 Dispute, 325 Surfaces, 326 Lamb's own name, 327 Toward, 328 Land, 329 Mistletoe, 330 Lamb, 331 Nourished, 332 Sticks, 333 Engage, 334 Pious, 335 Souper, 336 Mean, 337 Naive, 338 Waggle, 339 By, 340 Artificial, 341 Medical, 342 Medals, 343 Ounce of, 344 Dispute, 345 Surfaces, 346 Lamb's own name, 347 Toward, 348 Land, 349 Mistletoe, 350 Lamb, 351 Nourished, 352 Sticks, 353 Engage, 354 Pious, 355 Souper, 356 Mean, 357 Naive, 358 Waggle, 359 By, 360 Artificial, 361 Medical, 362 Medals, 363 Ounce of, 364 Dispute, 365 Surfaces, 366 Lamb's own name, 367 Toward, 368 Land, 369 Mistletoe, 370 Lamb, 371 Nourished, 372 Sticks, 373 Engage, 374 Pious, 375 Souper, 376 Mean, 377 Naive, 378 Waggle, 379 By, 380 Artificial, 381 Medical, 382 Medals, 383 Ounce of, 384 Dispute, 385 Surfaces, 386 Lamb's own name, 387 Toward, 388 Land, 389 Mistletoe, 390 Lamb, 391 Nourished, 392 Sticks, 393 Engage, 394 Pious, 395 Souper, 396 Mean, 397 Naive, 398 Waggle, 399 By, 400 Artificial, 401 Medical, 402 Medals, 403 Ounce of, 404 Dispute, 405 Surfaces, 406 Lamb's own name, 407 Toward, 408 Land, 409 Mistletoe, 410 Lamb, 411 Nourished, 412 Sticks, 413 Engage, 414 Pious, 415 Souper, 416 Mean, 417 Naive, 418 Waggle, 419 By, 420 Artificial, 421 Medical, 422 Medals, 423 Ounce of, 424 Dispute, 425 Surfaces, 426 Lamb's own name, 427 Toward, 428 Land, 429 Mistletoe, 430 Lamb, 431 Nourished, 432 Sticks, 433 Engage, 434 Pious, 435 Souper, 436 Mean, 437 Naive, 438 Waggle, 439 By, 440 Artificial, 441 Medical, 442 Medals, 443 Ounce of, 444 Dispute, 445 Surfaces, 446 Lamb's own name, 447 Toward, 448 Land, 449 Mistletoe, 450 Lamb, 451 Nourished, 452 Sticks, 453 Engage, 454 Pious, 455 Souper, 456 Mean, 457 Naive, 458 Waggle, 459 By, 460 Artificial, 461 Medical, 462 Medals, 463 Ounce of, 464 Dispute, 465 Surfaces, 466 Lamb's own name, 467 Toward, 468 Land, 469 Mistletoe, 470 Lamb, 471 Nourished, 472 Sticks, 473 Engage, 474 Pious, 475 Souper, 476 Mean, 477 Naive, 478 Waggle, 479 By, 480 Artificial, 481 Medical, 482 Medals, 483 Ounce of, 484 Dispute, 485 Surfaces, 486 Lamb's own name, 487 Toward, 488 Land, 489 Mistletoe, 490 Lamb, 491 Nourished, 492 Sticks, 493 Engage, 494 Pious, 495 Souper, 496 Mean, 497 Naive, 498 Waggle, 499 By, 500 Artificial, 501 Medical, 502 Medals, 503 Ounce of, 504 Dispute, 505 Surfaces, 506 Lamb's own name, 507 Toward, 508 Land, 509 Mistletoe, 510 Lamb, 511 Nourished, 512 Sticks, 513 Engage, 514 Pious, 515 Souper, 516 Mean, 517 Naive, 518 Waggle, 519 By, 520 Artificial, 521 Medical, 522 Medals, 523 Ounce of, 524 Dispute, 525 Surfaces, 526 Lamb's own name, 527 Toward, 528 Land, 529 Mistletoe, 530 Lamb, 531 Nourished, 532 Sticks, 533 Engage, 534 Pious, 535 Souper, 536 Mean, 537 Naive, 538 Waggle, 539 By, 540 Artificial, 541 Medical, 542 Medals, 543 Ounce of, 544 Dispute, 545 Surfaces, 546 Lamb's own name, 547 Toward, 548 Land, 549 Mistletoe, 550 Lamb, 551 Nourished, 552 Sticks, 553 Engage, 554 Pious, 555 Souper, 556 Mean, 557 Naive, 558 Waggle, 559 By, 560 Artificial, 561 Medical, 562 Medals, 563 Ounce of, 564 Dispute, 565 Surfaces, 566 Lamb's own name, 567 Toward, 568 Land, 569 Mistletoe, 570 Lamb, 571 Nourished, 572 Sticks, 573 Engage, 574 Pious, 575 Souper, 576 Mean, 577 Naive, 578 Waggle, 579 By, 580 Artificial, 581 Medical, 582 Medals, 583 Ounce of, 584 Dispute, 585 Surfaces, 586 Lamb's own name, 587 Toward, 588 Land, 589 Mistletoe, 590 Lamb, 591 Nourished, 592 Sticks, 593 Engage, 594 Pious, 595 Souper, 596 Mean, 597 Naive, 598 Waggle, 599 By, 600 Artificial, 601 Medical, 602 Medals, 603 Ounce of, 604 Dispute, 605 Surfaces, 606 Lamb's own name, 607 Toward, 608 Land, 609 Mistletoe, 610 Lamb, 611 Nourished, 612 Sticks, 613 Engage, 614 Pious, 615 Souper, 616 Mean, 617 Naive, 618 Waggle, 619 By, 620 Artificial, 621 Medical, 622 Medals, 623 Ounce of, 624 Dispute, 625 Surfaces, 626 Lamb's own name, 627 Toward, 628 Land, 629 Mistletoe, 630 Lamb, 631 Nourished, 632 Sticks, 633 Engage, 634 Pious, 635 Souper, 636 Mean, 637 Naive, 638 Waggle, 639 By, 640 Artificial, 641 Medical, 642 Medals, 643 Ounce of, 644 Dispute, 645 Surfaces, 646 Lamb's own name, 647 Toward, 648 Land, 649 Mistletoe, 650 Lamb, 651 Nourished, 652 Sticks, 653 Engage, 654 Pious, 655 Souper, 656 Mean, 657 Naive, 658 Waggle, 659 By, 660 Artificial, 661 Medical, 662 Medals, 663 Ounce of, 664 Dispute, 665 Surfaces, 666 Lamb's own name, 667 Toward, 668 Land, 669 Mistletoe, 670 Lamb, 671 Nourished, 672 Sticks, 673 Engage, 674 Pious, 675 Souper, 676 Mean, 677 Naive, 678 Waggle, 679 By, 680 Artificial, 681 Medical, 682 Medals, 683 Ounce of, 684 Dispute, 685 Surfaces, 686 Lamb's own name, 687 Toward, 688 Land, 689 Mistletoe, 690 Lamb, 691 Nourished, 692 Sticks, 693 Engage, 694 Pious, 695 Souper, 696 Mean, 697 Naive, 698 Waggle, 699 By, 700 Artificial, 701 Medical, 702 Medals, 703 Ounce of, 704 Dispute, 705 Surfaces, 706 Lamb's own name, 707 Toward, 708 Land, 709 Mistletoe, 710 Lamb, 711 Nourished, 712 Sticks, 713 Engage, 714 Pious, 715 Souper, 716 Mean, 717 Naive, 718 Waggle, 719 By, 720 Artificial, 721 Medical, 722 Medals, 723 Ounce of, 724 Dispute, 725 Surfaces, 726 Lamb's own name, 727 Toward, 728 Land, 729 Mistletoe, 730 Lamb, 731 Nourished, 732 Sticks, 733 Engage, 734 Pious, 735 Souper, 736 Mean, 737 Naive, 738 Waggle, 739 By, 740 Artificial, 741 Medical, 742 Medals, 743 Ounce of, 744 Dispute, 745 Surfaces, 746 Lamb's own name, 747 Toward, 748 Land, 749 Mistletoe, 750 Lamb, 751 Nourished, 752 Sticks, 753 Engage, 754 Pious, 755 Souper, 756 Mean, 757 Naive, 758 Waggle, 759 By, 760 Artificial, 761 Medical, 762 Medals, 763 Ounce of, 764 Dispute, 765 Surfaces, 766 Lamb's own name, 767 Toward, 768 Land, 769 Mistletoe, 770 Lamb, 771 Nourished, 772 Sticks, 773 Engage, 774 Pious, 775 Souper, 776 Mean, 777 Naive, 778 Waggle, 779 By, 780 Artificial, 781 Medical, 782 Medals, 783 Ounce of, 784 Dispute, 785 Surfaces, 786 Lamb's own name, 787 Toward, 788 Land, 789 Mistletoe, 790 Lamb, 791 Nourished, 792 Sticks, 793 Engage, 794 Pious, 795 Souper, 796 Mean, 797 Naive, 798 Waggle, 799 By, 800 Artificial, 801 Medical, 802 Medals, 803 Ounce of, 804 Dispute, 805 Surfaces, 806 Lamb's own name, 807 Toward, 808 Land, 809 Mistletoe, 810 Lamb, 811 Nourished, 812 Sticks, 813 Engage, 814 Pious, 815 Souper, 816 Mean, 817 Naive, 818 Waggle, 819 By, 820 Artificial, 821 Medical, 822 Medals, 823 Ounce of, 824 Dispute, 825 Surfaces, 826 Lamb's own name, 827 Toward, 828 Land, 829 Mistletoe, 830 Lamb, 831 Nourished, 832 Sticks, 833 Engage, 834 Pious, 835 Souper, 836 Mean, 837 Naive, 838 Waggle, 839 By, 840 Artificial, 841 Medical, 842 Medals, 843 Ounce of, 844 Dispute, 845 Surfaces, 846 Lamb's own name, 847 Toward, 848 Land, 849 Mistletoe, 850 Lamb, 851 Nourished, 852 Sticks, 853 Engage, 854 Pious, 855 Souper, 856 Mean, 857 Naive, 858 Waggle, 859 By, 860 Artificial, 861 Medical, 862 Medals, 863 Ounce of, 864 Dispute, 865 Surfaces, 866 Lamb's own name, 867 Toward, 868 Land, 869 Mistletoe, 870 Lamb, 871 Nourished, 872 Sticks, 873 Engage, 874 Pious, 875 Souper, 876 Mean, 877 Naive, 878 Waggle, 879 By, 880 Artificial, 881 Medical, 882 Medals, 883 Ounce of, 884 Dispute, 885 Surfaces, 886 Lamb's own name, 887 Toward, 888 Land, 889 Mistletoe, 890 Lamb, 891 Nourished, 892 Sticks, 893 Engage, 894 Pious, 895 Souper, 896 Mean, 897 Naive, 898 Waggle, 899 By, 900 Artificial, 901 Medical, 902 Medals, 903 Ounce of, 904 Dispute, 905 Surfaces, 906 Lamb's own name, 907 Toward, 908 Land, 909 Mistletoe, 910 Lamb, 911 Nourished, 912 Sticks, 913 Engage, 914 Pious, 915 Souper, 916 Mean, 917 Naive, 918 Waggle, 919 By, 920 Artificial, 921 Medical, 922 Medals, 923 Ounce of, 924 Dispute, 925 Surfaces, 926 Lamb's own name, 927 Toward, 928 Land, 929 Mistletoe, 930 Lamb, 931 Nourished, 932 Sticks, 933 Engage, 934 Pious, 935 Souper, 936 Mean, 937 Naive, 938 Waggle, 939 By, 940 Artificial, 941 Medical, 942 Medals, 943 Ounce of, 944 Dispute, 945 Surfaces, 946 Lamb's own name, 947 Toward, 948 Land, 949 Mistletoe, 950 Lamb, 951 Nourished, 952 Sticks, 953 Engage, 954 Pious, 955 Souper, 956 Mean, 957 Naive, 958 Waggle, 959 By, 960 Artificial, 961 Medical, 962 Medals, 963 Ounce of, 964 Dispute, 965 Surfaces, 966 Lamb's own name, 967 Toward, 968 Land, 969 Mistletoe, 970 Lamb, 971 Nourished, 972 Sticks, 973 Engage, 974 Pious, 975 Souper, 976 Mean, 977 Naive, 978 Waggle, 979 By, 980 Artificial, 981 Medical, 982 Medals, 983 Ounce of, 984 Dispute, 985 Surfaces, 986 Lamb's own name, 987 Toward, 988 Land, 989 Mistletoe, 990 Lamb, 991 Nourished, 992 Sticks, 993 Engage, 994 Pious, 995 Souper, 996 Mean, 997 Naive, 998 Waggle, 999 By, 1000 Artificial, 1001 Medical, 1002 Medals, 1003 Ounce of, 1004 Dispute, 1005 Surfaces, 1006 Lamb's own name, 1007 Toward, 1008 Land, 1009 Mistletoe, 1010 Lamb, 1011 Nourished, 1012 Sticks, 1013 Engage, 1014 Pious, 1015 Souper, 1016 Mean, 1017 Naive, 1018 Waggle, 1019 By, 1020 Artificial, 1021 Medical, 1022 Medals, 1023 Ounce of, 1024 Dispute, 1025 Surfaces, 1026 Lamb's own name, 1027 Toward, 1028 Land, 1029 Mistletoe, 1030 Lamb, 1031 Nourished, 1032 Sticks, 1033 Engage, 1034 Pious, 1035 Souper, 1036 Mean, 1037 Naive, 1038 Waggle, 1039 By, 1040 Artificial, 1041 Medical, 1042 Medals, 1043 Ounce of, 1044 Dispute, 1045 Surfaces, 1046 Lamb's own name, 1047 Toward, 1048 Land, 1049 Mistletoe, 1050 Lamb, 1051 Nourished, 1052 Sticks, 1053 Engage, 1054 Pious, 1055 Souper, 1056 Mean, 1057 Naive, 1058 Waggle, 1059 By, 1060 Artificial, 1061 Medical, 1062 Medals, 1063 Ounce of, 1064 Dispute, 1065 Surfaces, 1066 Lamb's own name, 1067 Toward, 1068 Land, 1069 Mistletoe, 1070 Lamb, 1071 Nourished, 1072 Sticks, 1073 Engage, 1074 Pious, 1075 Souper, 1076 Mean, 1077 Naive, 1078 Waggle, 1079 By, 1080 Artificial, 1081 Medical, 1082 Medals, 1083 Ounce of, 1084 Dispute, 1085 Surfaces, 1086 Lamb's own name, 1087 Toward, 1088 Land, 1089 Mistletoe, 1090 Lamb, 1091 Nourished, 1092 Sticks, 1093 Engage, 1094 Pious, 1095 Souper, 1096 Mean, 1097 Naive, 1098 Waggle, 1099 By, 1100 Artificial, 1101 Medical, 1102 Medals, 1103 Ounce of, 1104 Dispute, 1105 Surfaces, 1106 Lamb's own name, 1107 Toward, 1108 Land, 1109 Mistletoe, 1110 Lamb, 1111 Nourished, 1112 Sticks, 1113 Engage, 1114 Pious, 1115 Souper, 1116 Mean, 1117 Naive, 1118 Waggle, 1119 By, 1120 Artificial, 1121 Medical, 1122 Medals, 1123 Ounce of, 1124 Dispute, 1125 Surfaces, 1126 Lamb's own name, 1127 Toward, 1128 Land, 1129 Mistletoe, 1130 Lamb, 1131 Nourished, 1132 Sticks, 1133 Engage, 1134 Pious, 1135 Souper, 1136 Mean, 1137 Naive, 1138 Waggle, 1139 By, 1140 Artificial, 1141 Medical, 1142 Medals, 1143 Ounce of, 1144 Dispute, 1145 Surfaces, 1146 Lamb's own name, 1147 Toward, 1148 Land, 1149 Mistletoe, 1150 Lamb, 1151 Nourished, 1152 Sticks, 1153 Engage, 1154 Pious, 1155 Souper, 1156 Mean, 1157 Naive, 1158 Waggle, 1159 By, 1160 Artificial, 1161 Medical, 1162 Medals, 1163 Ounce of, 1164 Dispute, 1165 Surfaces, 1166 Lamb's own name, 1167 Toward, 1168 Land, 1169 Mistletoe, 1170 Lamb, 1171 Nourished, 1172 Sticks, 1173 Engage, 1174 Pious, 1175 Souper, 1176 Mean, 1177 Naive, 1178 Waggle, 1179 By, 1180 Artificial, 1181 Medical, 1182 Medals, 1183 Ounce of, 1184 Dispute, 1185 Surfaces, 1186 Lamb's own name, 1187 Toward, 1188 Land, 1189 Mistletoe, 1190 Lamb, 1191 Nourished, 1192 Sticks, 1193 Engage, 1194 Pious, 1195 Souper, 1196 Mean, 1197 Naive, 1198 Waggle, 1199 By, 1200 Artificial, 1201 Medical, 1202 Medals, 1203 Ounce of, 1204 Dispute, 1205 Surfaces, 1206 Lamb's own name, 1207 Toward, 1208 Land, 1209 Mistletoe, 1210 Lamb, 1211 Nourished, 1212 Sticks, 1213 Engage, 1214 Pious, 1215 Souper, 1216 Mean, 1217 Naive, 1218 Waggle, 1219 By, 1220 Artificial, 1221 Medical, 1222 Medals, 1223 Ounce of, 1224 Dispute, 1225 Surfaces, 1226 Lamb's own name, 1227 Toward, 1228 Land, 1229 Mistletoe, 1230 Lamb, 1231 Nourished, 1232 Sticks, 1233 Engage, 1234 Pious, 1235 Souper, 1236 Mean, 1237 Naive, 1238 Waggle, 1239 By, 1240 Artificial, 1241 Medical, 1242 Medals, 1243 Ounce of, 1244 Dispute, 1245 Surfaces, 1246 Lamb's own name, 1247 Toward, 1248 Land, 1249 Mistletoe, 1250 Lamb, 1251 Nourished, 1252 Sticks, 1253 Engage, 1254 Pious, 1255 Souper, 1256 Mean, 1257 Naive, 1258 Waggle, 1259 By, 1260 Artificial, 1261 Medical, 1262 Medals, 1263 Ounce of, 1264 Dispute, 1265 Surfaces, 1266 Lamb's own name, 1267 Toward, 1268 Land, 1269 Mistletoe, 1270 Lamb, 1271 Nourished, 1272 Sticks, 1273 Engage, 1274 Pious, 1275 Souper, 1276 Mean, 1277 Naive, 1278 Waggle, 1279 By, 1280 Artificial, 1281 Medical, 1282 Medals, 1283 Ounce of, 1284 Dispute, 1285 Surfaces, 1286 Lamb's own name, 1287 Toward, 1288 Land, 1289 Mistletoe, 1290 Lamb, 1291 Nourished, 1292 Sticks, 1293 Engage, 1294 Pious, 1295 Souper, 1296 Mean, 1297 Naive, 1298 Waggle, 1299 By, 1300 Artificial, 1301 Medical, 1302 Medals, 1303 Ounce of, 1304 Dispute, 1305 Surfaces, 1306 Lamb's own name, 1307 Toward, 1308 Land, 1309 Mistletoe, 1310 Lamb, 1311 Nourished, 1312 Sticks, 1313 Engage, 1314 Pious, 1315 Souper, 1316 Mean, 1317 Naive, 1318 Waggle, 1319 By, 1320 Artificial, 1321 Medical, 1322 Medals, 1323 Ounce of, 1324 Dispute, 1325 Surfaces, 1326 Lamb's own name, 1327 Toward, 1328 Land, 1329 Mistletoe, 1330 Lamb, 1331 Nourished, 1332 Sticks, 1333 Engage, 1334 Pious, 1335 Souper, 1336 Mean, 1337 Naive, 1338 Waggle, 1339 By, 1340 Artificial, 1341 Medical, 1342 Medals, 1343 Ounce of, 1344 Dispute, 1345 Surfaces, 1346 Lamb's own name, 1347 Toward, 1348 Land, 1349 Mistletoe, 1350 Lamb, 1351 Nourished, 1352 Sticks, 1353 Engage, 1354 Pious, 1355 Souper, 1356 Mean, 1357 Naive, 1358 Waggle, 1359 By, 1360 Artificial, 1361 Medical, 1362 Medals, 1363 Ounce of, 1364 Dispute, 1365 Surfaces, 1366 Lamb's own name, 1367 Toward, 1368 Land, 1369 Mistletoe, 1370 Lamb, 1371 Nourished, 1372 Sticks, 1373 Engage, 1374 Pious, 1375 Souper, 1376 Mean, 1377 Naive, 1378 Waggle, 1379 By, 1380 Artificial, 1381 Medical, 1382 Medals, 1383 Ounce of, 1384 Dispute, 1385 Surfaces, 1386 Lamb's own name, 1387 Toward, 1388 Land, 1389 Mistletoe, 1390 Lamb, 1391 Nourished, 1392 Sticks, 1393 Engage, 1394 Pious, 1395 Souper, 1396 Mean, 1397 Naive, 1398 Waggle, 1399 By, 1400 Artificial, 1401 Medical, 1402 Medals, 1403 Ounce of, 1404 Dispute, 1405 Surfaces, 1406 Lamb's own name, 1407 Toward, 1408 Land, 1409 Mistletoe, 1410 Lamb, 1411 Nourished, 1412 Sticks, 1413 Engage, 1414 Pious, 1415 Souper, 1416 Mean, 1417 Naive, 1418 Waggle, 1419 By, 1420 Artificial, 1421 Medical, 1422 Medals, 1423 Ounce of, 1424 Dispute, 1425 Surfaces, 1426 Lamb's own name, 1427 Toward, 1428 Land, 1429 Mistletoe, 1430 Lamb, 1431 Nourished, 1432 Sticks, 1433 Engage, 1434 Pious, 1435 Souper, 1436 Mean, 1437 Naive, 1438 Waggle, 1439 By, 1440 Artificial, 1441 Medical, 1442 Medals, 1443 Ounce of, 1444 Dispute, 1445 Surfaces, 1446 Lamb's own name, 1447 Toward, 1448 Land, 1449 Mistletoe, 1450 Lamb, 1451 Nourished, 1452 Sticks, 1453 Engage, 1454 Pious, 1455 Souper, 1456 Mean, 1457 Naive, 1458 Waggle, 1459 By, 1460 Artificial, 1461 Medical, 1462 Medals, 1463 Ounce of, 1464 Dispute, 1465 Surfaces, 1466 Lamb's own name, 1467 Toward, 1468 Land, 1469 Mistletoe, 1470 Lamb, 1471 Nourished, 1472 Sticks, 1473 Engage, 1474 Pious, 1475 Souper, 1476 Mean, 1477 Naive, 1478 Waggle, 1479 By, 1480 Artificial, 1481 Medical, 1482 Medals, 1483 Ounce of, 1484 Dispute, 1485 Surfaces, 1486 Lamb's own name, 1487 Toward, 1488 Land, 1489 Mistletoe, 1490 Lamb, 1491 Nourished, 1492 Sticks, 1493 Engage, 1494 Pious, 1495 Souper, 1496 Mean, 1497 Naive, 1498 Waggle, 1499 By, 1500 Artificial, 1501 Medical, 1502 Medals, 1503 Ounce of, 1504 Dispute, 1505 Surfaces, 1506 Lamb's own name, 1507 Toward, 1508 Land, 1509 Mistletoe, 1510 Lamb, 1511 Nourished, 1512 Sticks, 1513 Engage, 1514 Pious, 1515 Souper, 1516 Mean, 1517 Naive, 1518 Waggle, 1519 By, 1520 Artificial, 1521 Medical, 1522 Medals, 1523 Ounce of, 1524 Dispute, 1525 Surfaces, 1526 Lamb's own name, 1527 Toward, 1528 Land, 1529 Mistletoe, 1530 Lamb, 1531 Nourished, 1532 Sticks, 1533 Engage, 1534 Pious, 1535 Souper, 1536 Mean, 1537 Naive, 1538 Waggle, 1539 By, 1540 Artificial, 1541 Medical, 1542 Medals, 1543 Ounce of, 1544 Dispute, 1545 Surfaces, 1546 Lamb's own name, 1547 Toward, 1548 Land, 1549 Mistletoe, 1550 Lamb, 1551 Nourished, 1552 Sticks, 1553 Engage, 1554 Pious, 1555 Souper, 1556 Mean, 1557 Naive, 1558 Waggle, 1559 By, 1560 Artificial, 1561 Medical, 1562 Medals, 1563 Ounce of, 1564 Dispute, 1565 Surfaces, 1566 Lamb's own name, 1567 Toward, 1568 Land, 1569 Mistletoe, 1570 Lamb, 1571 Nourished, 1572 Sticks, 1573 Engage, 1574 Pious, 1575 Souper, 1576 Mean, 1577 Naive, 1578 Waggle, 1579 By, 1580 Artificial, 1581 Medical, 1582 Medals, 1583 Ounce of, 1584 Dispute, 1585 Surfaces, 1586 Lamb's own name, 1587 Toward, 1588 Land, 1589 Mistletoe, 1590 Lamb, 1591 Nourished, 1592 Sticks, 1593 Engage, 1594 Pious, 1595 Souper, 1596 Mean, 1597 Naive, 1598 Waggle, 1599 By, 1600 Artificial, 1601 Medical, 1602 Medals, 1603 Ounce of, 1604 Dispute, 1605 Surfaces, 1606 Lamb's own name,

Strike Plagues Chrysler

Shutdowns In 8 Plants Idle 16,400

Auto Production Delay Possible

DETROIT (AP)—Chrysler Corp.'s 8,000 unionized office workers and engineers walked out Tuesday to support contract demands and quickly forced shutdowns of eight plants employing 16,400 production workers.

Chrysler said the strike could lead to a full shutdown of its auto-making operations, but the United Auto Workers union, which represents strikers and production workers, moved to minimize work stoppages.

The UAW ordered white-collar workers off lines at shift change times. Thus UAW members would not violate a long-standing policy against crossing picket lines of fellow unionists.

The first eight shutdowns don't come with shift changes and all stemmed from refusal to cross picket lines.

Drivers shutting new cars from assembly lines to shipping cars to drivers bringing bodies in parts to assembly plants didn't go through pickets. In some instances workers who went to work wouldn't go back through.

Six of the first plants shut were in the Detroit area. The other two were the Plymouth assembly and body plants at Warren, Mich.

The left Chrysler assembling automobiles only at its Plymouth-Dodge plant in Newark, N.J., and in its all-steel plant in Los Angeles.

The striking white-collar workers are spread through 34 Chrysler plants, 20 of them in Detroit.

The UAW said it was urging production workers to stay on the job but came up with no new answer on how it might in the future avoid shutting-down circumstances which developed Tuesday.

The union said there would be no strike or pickets at any plant, bank or other defense work operated by Chrysler.

Major issues which an all-day, eight bargaining session failed to settle by Tuesday's strike included demands for pay increases and a narrowing of pay differentials for similar work.

Judge Fraser, UAW bargaining agent, said the company refused to budge on any of these issues during negotiations.

Sam Borglum, American lawyer of the Mount Rushmore Memorial in South Dakota, died from 1867 to 1941.



AN UNIDENTIFIED U. S. Air Force officer talks with group of scientists who were rescued from Polar ice cap, Nov. 6, and flown to Harman Air Force Base at Newfoundland recently. Left to right: Thomas Stetson, of Belmont, Mass.; Capt. James Smith, of Oklahoma City, in flying clothes, and George Cvijunovich of Columbia University. Capt. Smith was with the rescue crew.

New Friends, Old Places

MSU Players' Tour Filled With Sightseeing

A mixture of the old and the new—that's what the MSU Players are finding as they tour United States military bases in Europe.

New places, new friends—old country, old buildings. The remaining days of the seven-week tour will take the student drama group to Munich, Stuttgart, Oberammergau, Berlin and other world-famous cities.

During the first few days in Frankfurt prior to their performances of "The Tender Trap," the 14 students met the Frankfurt Players, an amateur group of servicemen and civilian employees.

At Würzburg, the Players saw the residence of the Bishop of Würzburg, head of the Church in southern Germany, on the morning after death of Pope Pius XII. The students also saw many of the 32 churches in this area.

Several of the Players visited the castle at Marienberg, which for over 500 years served as the residence of the Prince-Bishops of Würzburg and the Dukes of Franconia. Constructed in the 12th Century, the castle was rebuilt after being burned out in intensive bombings during the late days of World War II.

The United Service Organizations, the American Educational Theatre Association, the U. S. Department of Defense and the "Cap and Gown Series" of the MSU Continuing Education Service are sponsoring the tour.

Clifford Swanson, Muskegon junior, arrested by campus police Saturday on a charge of failing to report for military induction, was freed Monday after posting \$3,500 bond pending arraignment by the U. S. District Court in Grand Rapids.

Swanson was held overnight Saturday in the East Lansing jail and taken to Grand Rapids Sunday where the U. S. District Attorney charged him with dodging the draft on the grounds that he was about to become a Canadian citizen.

Authorities in Grand Rapids credited an alert draft board clerk in Grand Rapids with revealing information that led to Swanson's arrest.

Electronic Brain Sets Records

No Coffee Breaks In 14 Work Hours

If MSU had a "rookie of the year" award for an outstanding newcomer, a top candidate would surely be MISTIC, short for Michigan State Integral Computer.

The big electronic "brain" has been known to work continuously for long stretches—up to 14 hours at a time—without even a coffee break.

In spite of a slack period during the summer when many researchers were on vacation, MISTIC has put in an average of 35 hours a week of steady work, not counting time out for repairs, some "rehearsals," and an occasional musical rendition of "Waltzing Mathilda" made possible through the gift of a special feed-in tape from operators of MISTIC's sister at the University of Sydney, Australia.

Here are a few of the hundreds of projects in which MISTIC has played an important part:

Analyzing the costs of newspaper production. Setting up tables that may eliminate thousands of hours of calculations in the design of gasoline refineries. Studies of supply and demand of farm commodities. Chemical research on the decomposition of peroxide.

Not content to rest on its laurels, MISTIC is learning more all the time. However, it is a slow learner. It may take many weeks to teach (program) the "brain" to do a new type of problem. But once it learns, it may do in minutes what would take trained mathematicians hundreds of hours.

Within the next few months, MISTIC may be able to take on bigger problems.

At Würzburg, the Players saw the residence of the Bishop of Würzburg, head of the Church in southern Germany, on the morning after death of Pope Pius XII. The students also saw many of the 32 churches in this area.

Several of the Players visited the castle at Marienberg, which for over 500 years served as the residence of the Prince-Bishops of Würzburg and the Dukes of Franconia. Constructed in the 12th Century, the castle was rebuilt after being burned out in intensive bombings during the late days of World War II.

The United Service Organizations, the American Educational Theatre Association, the U. S. Department of Defense and the "Cap and Gown Series" of the MSU Continuing Education Service are sponsoring the tour.

Clifford Swanson, Muskegon junior, arrested by campus police Saturday on a charge of failing to report for military induction, was freed Monday after posting \$3,500 bond pending arraignment by the U. S. District Court in Grand Rapids.

Swanson was held overnight Saturday in the East Lansing jail and taken to Grand Rapids Sunday where the U. S. District Attorney charged him with dodging the draft on the grounds that he was about to become a Canadian citizen.

Authorities in Grand Rapids credited an alert draft board clerk in Grand Rapids with revealing information that led to Swanson's arrest.

MSU Publication

Book Warns About Easy Credit Deals

A booklet which should prove of particular interest to workers who have not been able to meet their credit payments due to layoffs has been published by the Labor and Industrial Relations Center here.

Titled "Don't Get Garnished," the publication is designed to help the wage earner protect himself against the unethical use of "easy credit" rackets and swindles.

The author is Dr. Daniel Fustfeld, associate professor in the department of economics and the Labor and Industrial Relations Center.

He discusses practices which a small group of business firms employ to prey on wage earners. He reports the techniques vary from "the unethical use of easy credit" to swindles which are just within the law.

The basic way the "shady business firm" operates, says Fustfeld, "is to use high pressure salesmanship to obligate a worker for debts beyond his ability to pay and then to collect by garnishment of wages."

Copies of the publication may be ordered from the Labor and Industrial Relations Center, Michigan State University.

Band Leader Melachrino Works in Musical Therapy

Popular band leader George Melachrino, the man who created "mood music," has been working closely with London psychiatrists in the musical therapy treatment of mentally ill children.

The composer-conductor, who appears here with his orchestra on Thursday, at the Aud under the direction of S. Hurok, has achieved singular success in the new field of utilizing music to cure unbalanced youngsters.

Melachrino calls it the most exciting work of his life.

"I've always had a passion for children," the chubby musician says, "I lost my own two boys in the blitz. I dearly love to help children."

It was while reading his fan mail one night in 1933 that the idea of using music to help medicine came to him. As he read some of the fans' letters of thanks for his music he realized that music could help the mal-adjusted.

Soon, children for whom there seemed little hope in normal society began to visit the home of Mr. and Mrs. Melachrino.

He let them make their own rhythm by clinking various trinkets left lying around, later he let them play simple flutes

and whistles. But the main treatment was listening to music.

Four British psychiatrists have come forward to support Melachrino in his work. The four often refer almost "hopeless" cases to him.

One resentful boy, who at the age of nine, terrorized the neighborhood as a gang leader, threw stones and fireworks at other children—and at Melachrino's automobile.

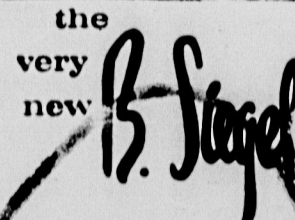
"His tremendous personality gave him a sense of power and made him a menace," says Melachrino.

The band leader invited the lad to his home and sat quietly with him and played sentimental records—and watched him unwind.

After several weeks the boy changed completely. Melachrino has used his musical theories to successfully help a curly headed blonde girl who was still unable to walk or talk at the age of two as well as a teen-ager who, fearing she couldn't be as beautiful as her parents wanted her to be, refused to face others.

The master touch is evident in the rich orchestrations of popular and light-classical selections that Melachrino presents in his public programs. He has led the way to a whole new concept in popular music making. Under his imaginative influence the art of Mood Music was born and has found tremendous favor everywhere.

Americans, who have purchased more than three million of Melachrino's records, will have a chance to hear him in person during his current 40-city tour of the United States and Canada.



the very new B. Stages

Huge Clearance Sale!

- featuring exciting savings in
- coats
 - dresses
 - suits
 - accessories
 - junior dresses
 - sportswear

Wonderful values throughout the entire store on chic fall and winter apparel!

Buy now at remarkable savings!

STORE HOURS: Mon., Tues., Thurs., Fri., Sat. 9:30 A. M. to 6:30 P. M. Wednesday 12 Noon to 9 P. M. FREE PARKING

FALL TERM GRADUATES ORDER YOUR CAPS AND GOWNS NOW

UNION BOOK STORE

Keepsake THE BEST

CAMEO \$300.00 Also \$100 to \$250 Wedding Ring \$12.50

Thompson's Jewelry 223 M.A.C.

Starts THURS. LAST DAY!

THE BRIDGE ON THE RIVER KWAI 12:00-3:30-6:30-9:10

THEY ARE NO LOVES LIKE THE LOVES IN EVERY MILLS picture of IN LOVE AND WAR

CINEMASCOPE COLOR BY DE LUXE

with MORT SABEL

WINTER HUNTER LANCE DILLMAN NORTH NGUYEN

Peter ARNO

"Good grief, I dropped the Camels!"

More adventures on the wing smoke Camels than any other cigarette today. It stands to reason: the best tobacco makes the best smoke. The Camel blend of costly tobaccos has never been equalled for rich flavor and easygoing mildness. Year in and year out, Camel leads every other brand in sales.

Don't fool around with fade and fancy stuff...

Have a real cigarette - have a CAMEL

© J. Donaldson & Co., Winston-Salem, N. C.

Kenny Lane Attacked by Co-Manager

MUSKEGON (P)—A tongue-lashing by his co-manager, Pete Petroskey, had southpaw lightweight boxer Kenny Lane of Muskegon "a little steamed up" Tuesday.

Petroskey said Monday that Lane's 10-round split decision over unranked Labourni Gath at Syracuse, N.Y., Friday was "a mediocre performance."

"Before the Gath fight, he thought he was the 'Great Kenny Lane' but to me he was just an ordinary fighter who had not trained," Petroskey said.

Lane lost a close decision in July to lightweight champion Joe Brown in a title fight at Houston. "Ever since the Brown fight," Petroskey said, "I've had trouble trying to get Kenny to listen."

He charged his fighter was overweight against Gath.

Lane beat Gath Tuesday. "That doesn't discourage me," he said. "It kinda makes me mad. I only had four fights last year. I could do a lot better if we got on the ball and got more fights. I don't think sitting around does anybody any good—I need at least a dozen fights a year."

Lane the No. 1 ranked lightweight contender, said he was forced to take three days off training before the Gath fight because of a pulled back muscle. He also said he didn't have enough sweat clothes for pre-fight roadwork at Syracuse.

"When you don't sweat, you don't lose weight," Lane argued.

KID ANSWER

ROYAL	SWIM
INURE	PLINE
TEXAN	ALTY
ABETS	SLAW
NID	LIKE
SYOULD	AGREED
END	ERA
SROAD	APPLE
THE	HUMANITIES
ARC	MEDICAL
LOOK	TIP
EMIT	ROE
REUS	ESS
ESS	TREE

Switch from HOTS to Snow Fresh KOOL



CHICAGO BEARS back J. C. Caroline does some fancy stepping behind the blocking of tackle Stan Jones (78) to evade the long arm of Green Bay Packers' big end, Len Ford (53), to chalk up a six-yard gain in the first quarter at Wrigley Field in Chicago Sunday. Packer tackle J. D. Kimmel (71), left, takes a header as he tries for the runner. The Bears won, 24-14. (AP Wirephoto.)

3 Sororities, 3 Dorms

IM Swim Championships Tonight in Women's Pool

Three sororities and three women's dormitories will participate in the intramural women's swimming championships tonight in the Women's gym pool.

The meet will start at 7:30 p.m., and the public is invited to attend.

Women's dormitories competing in the meet include Abbott, Snyder and West Mayo Halls. Kappa Kappa Gamma, Alpha Xi Delta and Delta Delta Delta will provide the sorority competition.

The Kappas won the sorority championship while Snyder Hall is the top team in the dormitory competition.

The meet tonight will include four individual speed relay races. There will be three relay events and one diving event.

The All-University women's swimming meet, held every fall term, is the result of elimination tournaments in the dormitory and sorority blocks.

Each dormitory and each sorority compete in three meets during the term, and the top three teams with the most points accumulated are eligible for the All-University meet.

In the 25-yard freestyle, Janet

Porter (Kappa Kappa Gamma), Arlene Weisman (West Mayo), Gvnt Hays (Delta Delta Delta), Annette Lezell (Snyder) and Robin Finlay (Alpha Xi Delta) will swim for the individual title.

Judy Pettigrew (Kappa Kappa Gamma), Eleanor Elnen (Delta Delta Delta), Jerri Barnes (Snyder), Elaine Keryak (Alpha Xi Delta) and Margot Carnell (Abbott) will participate in the 25-yard backstroke.

Others competing in the speed and form events include Karen Luedke (West Mayo), Jean Farish (Abbott), Gvchen Lechner (Kappa Kappa Gamma), Ginny Pace (Snyder) and Linda Hamilton (Delta Delta Delta).

More include Denise Deconover (Kappa Kappa Gamma), Maria Tiesana (Alpha Xi Delta), Joan Becker (Delta Delta Delta), Pam Wakefield (Delta Delta Delta) and Sandra Bennett (Alpha Xi Delta).

Abbott Hall will also have Susan Atwell, Patt Graff, and Barb Uglaw. Others from West Mayo include Cathie Russell, Carol Anne and Sandy Frost.

End Sam Williams, captain of MSU's 1954 football team, and first string guard John Middleton both were selected on all-service honor teams while playing ball for Uncle Sam.

Sportstalk Titles for State?

By DARWIN BENNETT

MICHIGAN STATE'S rapidly improving cross country team will take to the road Thursday to defend its Big 10 and IC4A titles with an excellent chance of successfully accomplishing this goal. A convincing win in these two championships would make the Spartans the most dangerous challengers for top honors in the NCAA meet on November 24.

But let's not look too far ahead, for Iowa and Indiana stand in the way of a Big 10 crown and the IC4A boasts entries from over 30 Eastern colleges and universities.

When the Spartans make their way out of Bartlett Gym onto the Washington Park course in Chicago Friday, they will find an unbeaten Hawkeye squad led by Deacon Jones who has matched his team's record of no losses. Indiana, another contender for the title, tied a strong Notre Dame team just last week. The Spartans defeated the Irish in a triangular meet 21-37 two weeks ago.

MICHIGAN STATE'S Fordy Kennedy, captain of the harrier squad, will be seeking revenge this year against Minnesota's Bud Edelen, who edged the Spartan runner in the league championships last year by a few feet with a time of 21:09.4. Kennedy's only other challenger will be Jones, who defeated Edelen last week in a dual meet between the Hawkeyes and the Minnesota Gophers.

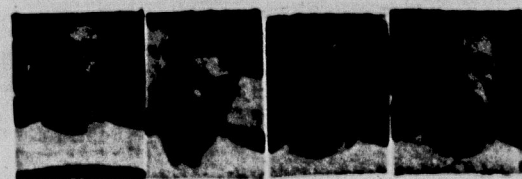
In the IC4A meet last year, over the Van Cortland Park five-mile course in New York City, Kennedy bounced back from his defeat at the hands of Edelen and won the race with a 24:14.8—the second fastest time ever run in IC4A history. Henry Kennedy, Fordy's brother set the mark in 1956, when the Spartans completed a "grand slam" for the season. A grand slam in cross country is composed of wins in all three major meets—the Big 10, IC4A and NCAA championships.

Veteran runner Bob Lake has been running in his usual good form and will add to the Spartan attack. Last year Lake took fourth in the Big 10 and finished seventh in the IC4A on the basis of a 25:03 performance.

FOR BILL REYNOLDS, this will be his first Big 10 outing, but the sophomore runner took fourth against Penn State with a 25:49 timing and edged Lake in the triangular meet with Wisconsin and Notre Dame to take third place.

Tony Smith, a regular on last year's squad, ran his best time against Penn State also. Smith earned eighth with a time of 26:45. He posted a 23:06 time in the last year's Big 10 meet.

Dave Lean, who captained the track team last spring, was not running too well in the early part of the season



but has come along. Lean, who ran cross country last year for the first time, will be pushing Smith and Jim Horan.

Horan is a runner who also has been slow in developing but recently has been turning in very good performances for the Spartans. He placed even higher than Smith in the Penn State meet, running the five-mile circuit in 26:42.

SIDELIGHTS: Michigan State will be seeking its fourth straight Big 10 crown Friday and its seventh in eight tries. Last year's winning score of 43 points was impressive but it nowhere approaches the Big 10 record set by the Spartans in 1956 of 21 points.

MSU Coaching Staff Molds Winning Team

By LARRY WROBLEWSKI
Amv Edm. Page Editor

Who actually is responsible for a winning and losing season?

The trend could be easily applied to basketball. However, MSU has a coaching staff which has molded a winning team. Prior to this success now enjoyed by Coach Fordy Anderson and Asst. Bob Stevens and Sonny Means, State's basketball quintets were easy prey for the opposition.

Having formed a winning philosophy, the coaches attempt to maintain this attitude in their players and student body.

In his fifth year, as head coach, Anderson has brought the winning touch everywhere he has coached.

Before coming to MSU in 1954, Anderson's teams had won 203 games and lost 84, a phenomenal feat. In his campaigns at MSU, Anderson has assembled a respectable 58-34 record.

Anderson, who played his collegiate basketball at Stanford University, was elected "Coach of the Year" by the Chicago Basketball Writers Assn. for his outstanding work as head coach of the Great Lakes Naval Training Station squad. He compiled a 32-5 record in this season in the Navy.

In 1948-54 Anderson built Bradley into a powerful basketball aggression. His Braves teams took one Sugar Bowl classic, finished second four times and fourth once in national tournaments.

Anderson completed his final year with a second place standing in the NCAA finals.

After two "average" seasons, Anderson piloted State to a share of the Big 10 title and fourth position in the NCAA finals.

After losing the first three conference games of the 1953-54 season, Anderson took his Spartans from red to riches by sweeping through the remainder of the season with 10 straight wins.

State dumped Notre Dame and Kentucky to take the Midwestern Regional championship of Lexington, Ky. The Spartans went as far as the NCAA semi-finals before dropping a three-overturn decision to North Carolina, the nation's first-running team.

Last year, Anderson succeeded in directing State to a 14-6 season. In the Big 10 race, the Spartans ended up in a deadlock for second with Purdue.

But Anderson's good fortunes are to be deservedly shared by Stevens and Means.

Stevens, who played basketball for MSU in 1947-48, has the responsibility of scouting the enemy. In his fourth year as assistant, Stevens has contributed much.

Each year Stevens watches many basketball games, but few Spartan games. His critical eye views the opposition's offensive and defensive patterns, and the movements of individual players.

Stevens then acquaints the

Spartans with the enemy's strength and weaknesses in a thorough report. His minute details may spell the difference between victory and defeat.

Keeping with the "home grown" policy, it's no surprise that the freshman coach played basketball for State.

Means played under the control style of ball employed by

Anderson's predecessor, Fred Newell in 1949-52.

It's Means' job to develop freshman prospects. He must teach and drill the newcomers on the basic fundamentals of the Spartan "fast break."

During the Anderson-Stevens Means reign, MSU basketball has prospered, and this season should be no exception.



THE COACHING OF Amv Bob Stevens (l-r), Head Coach Fordy Anderson, and Fresh Coach Sonny Means has brought fame to the Spartan basketball team. This trio is diligently preparing State's opener Dec. 6 against the University of Detroit.

Denies Rumors

Notre Dame to Retain Brennan, Says Krause

CHICAGO (P)—Terry Brennan is going to be the coach at Notre Dame for a long time, Ed Krause, Notre Dame Athletic Director, said Tuesday.

If there had been any rumors of Brennan being replaced, Krause quickly spiked them in an appearance before the Chicago Football Writers Assn.

"Terry is doing a fine job for us and he is improving," Krause said. "He is a better coach than he was last year or two years ago. He will be coaching Notre Dame for a long time."

Krause said with a break here and a break there, Notre Dame could have been unbeaten thus far instead of absorbing losses to Army, Purdue and Pittsburgh.

The Irish hold victories over Indiana, Southern Methodist, Duke and Navy. They meet North Carolina, winner of its last six starts, Saturday and then face Iowa and Southern California to end the season.

"I would rate Iowa the No. 1 team in the country and would vote for Ara Parseghian (Northwestern) as coach of the year," Krause continued. "And as for the teams we have played, I would rank Purdue, Army and Pitt—in that order—as the best."

"I easily could give Notre Dame an undefeated season. I could go out and schedule soft touches. But we believe what Knute Rockne used to say: 'Play

the best, and if you can't win, have accomplished nothing and if you lose you are embarrassed."

"I think more and more we will find that there won't be such a thing as a major season going through a season unless you schedule making now is following the trend of Knute Rockne."

Krause also said that football is becoming more dramatic, opening up more, that the point conversion also favors the likes of it, and that Notre Dame's greatest weakness has been fumbles.

The Irish fumbled seven times and lost the ball five times losing 29-26 at Pittsburgh Sunday.

"As for officiating," Krause said, "as long as officials are working as a team they are doing a good job. At all interesting games, officials from the section should be used. Not all crews (two from the section and two from the other section) because they are used to working with each other and cases of judgment in all a play may not be unanimous."

State Tags Ty Cobb For Tax Evasions

HEAVEN IN HADES

IFC - PAN HEL

ALL UNIVERSITY DANCE

FRI. NOV. 14

AT THE DELL'S

Bob Eberhart's Orchestra

\$2.00 PER COUPLE

TICKETS IN THE UNION

Van Dervoort's

213 E. Grand River
Ph. ED 2-2114

SPECIAL

1 GROUP
PULL-OVER
AND
CARDIGAN
SWEATERS

Reg. \$11.95 • \$19.95

1/2 Price

SPECIAL! IMPORTED FROM ITALY!

NORVA SKI BOOTS

with steel shank,
reinforced counters

\$31.95

Reg. \$50.00

6-FT. WOOL SCARVES

100% Wool
Green and White

\$2.95

**LAYAWAY SKI
EQUIPMENT NOW**

OPEN TONIGHT 7 TO 9 P.M.

KOOL CROSSWORD No. 7

<p>ACROSS</p> <ol style="list-style-type: none"> 1. Sun 2. Get into dinner 3. Hard 4. Drogue 5. Name of second largest city 6. Fair 7. Page 8. Chicago city 9. Name of 1st 10. The Pen 11. Impulsive 12. Last year 13. There's a 14. One of the 15. Type of light 16. Spanish 17. Just take one 18. Cultural 19. Opposite of 20. Kind of 21. Kind of 22. Kind of 23. Kind of 24. Kind of 25. Kind of 26. Kind of 27. Kind of 28. Kind of 29. Kind of 30. Kind of 31. Kind of 32. Kind of 33. Kind of 34. Kind of 35. Kind of 36. Kind of 37. Kind of 38. Kind of 39. Kind of 40. Kind of 41. Kind of 42. Kind of 43. Kind of 44. Kind of 45. Kind of 46. Kind of 47. Kind of 48. Kind of 49. Kind of 50. Kind of 51. Kind of 52. Kind of 53. Kind of 54. Kind of 55. Kind of 56. Kind of 57. Kind of 58. Kind of 59. Kind of 60. Kind of 61. Kind of 62. Kind of 63. Kind of 64. Kind of 65. Kind of 66. Kind of 67. Kind of 68. Kind of 69. Kind of 70. Kind of 71. Kind of 72. Kind of 73. Kind of 74. Kind of 75. Kind of 76. Kind of 77. Kind of 78. Kind of 79. Kind of 80. Kind of 81. Kind of 82. Kind of 83. Kind of 84. Kind of 85. Kind of 86. Kind of 87. Kind of 88. Kind of 89. Kind of 90. Kind of 91. Kind of 92. Kind of 93. Kind of 94. Kind of 95. Kind of 96. Kind of 97. Kind of 98. Kind of 99. Kind of 100. Kind of 	<p>DOWN</p> <ol style="list-style-type: none"> 1. Big one from 2. Half of a 3. People's 4. I want 5. I want 6. They make 7. The 8. In Germany 9. Kind of 10. Kind of 11. Kind of 12. Kind of 13. Kind of 14. Kind of 15. Kind of 16. Kind of 17. Kind of 18. Kind of 19. Kind of 20. Kind of 21. Kind of 22. Kind of 23. Kind of 24. Kind of 25. Kind of 26. Kind of 27. Kind of 28. Kind of 29. Kind of 30. Kind of 31. Kind of 32. Kind of 33. Kind of 34. Kind of 35. Kind of 36. Kind of 37. Kind of 38. Kind of 39. Kind of 40. Kind of 41. Kind of 42. Kind of 43. Kind of 44. Kind of 45. Kind of 46. Kind of 47. Kind of 48. Kind of 49. Kind of 50. Kind of 51. Kind of 52. Kind of 53. Kind of 54. Kind of 55. Kind of 56. Kind of 57. Kind of 58. Kind of 59. Kind of 60. Kind of 61. Kind of 62. Kind of 63. Kind of 64. Kind of 65. Kind of 66. Kind of 67. Kind of 68. Kind of 69. Kind of 70. Kind of 71. Kind of 72. Kind of 73. Kind of 74. Kind of 75. Kind of 76. Kind of 77. Kind of 78. Kind of 79. Kind of 80. Kind of 81. Kind of 82. Kind of 83. Kind of 84. Kind of 85. Kind of 86. Kind of 87. Kind of 88. Kind of 89. Kind of 90. Kind of 91. Kind of 92. Kind of 93. Kind of 94. Kind of 95. Kind of 96. Kind of 97. Kind of 98. Kind of 99. Kind of 100. Kind of
--	--

Switch from HOTS to Snow Fresh KOOL

What a wonderful difference when you switch to Snow Fresh KOOL! At once your mouth feels clean and cool... your throat feels smoothed, refreshed!

Enjoy the most refreshing experience in smoking. Smoke KOOL... with mild, mild menthol... for a cleaner, fresher taste all through the day!

KOOL GIVES YOU A CHOICE—REGULAR OR KING SIZE WITH FILTER.

Daugherty Notes Low Scoring Offense

Touchdowns Are Lacking This Season

4 TD's, 1 Field Goal Means No Losses

By CHUCK RICHARDS
It's getting to be that time of year when the cold dark nights make a man want to reminisce about the good old days... especially when things haven't been going so well lately.

Duffy Daugherty was the man who the reminiscing Tuesday night after sending his Michigan State football team through a long practice session.

"I happened to pick up a newspaper last night," he said, "and I saw a column which told what happened a year ago. It was one of those things that recalls past years — you know."

"We beat Notre Dame, 14-6, just a year ago. I thought that was particularly interesting since we scored four touchdowns more than we needed, and only needed one to win, 7-6."

"At the time we didn't need those touchdowns — but look now we could have done with just one."

Daugherty showed how those touchdowns — and a field goal — would make the Spartans an undefeated team this season.

They lost to Purdue by one point, to Wisconsin by two points, and Indiana by a touchdown.

"If only our offense could get past across a few touchdowns when we needed them," he said. "They are capable of it — but we just haven't been able to do it."

Daugherty also pointed out that his players have damaged the back. "While few have been completely crippled, there have been numerous little problems which have hurt them."

Sam Williams, Fran O'Brien, and Elmer Kelly are the only ones who haven't missed a game. Duffy pointed out, said Kelly has been hobbled with a knee ailment.

This has forced the amiable Daugherty to play inexperienced newcomers in important spots (no less than six sophomores have seen action with the Spartans).

"We have less experience than our other Big 10 team," he added.

The latest schedule to crack the starting lineup could be one of the best.

Tom Wilson, who possesses a size well-known to Spartan fans, has taken over the starting quarterback's job — the job nobody seems able to handle.

Wilson, who is the brother of the late star John and Pat, has been recovering from a crippling knee injury suffered last fall and can run at top speed for the first time.

The youngest of the Wilsons, he shows despite his 6-11 inch to Indiana Saturday. He is a good ball handler and his passing has been extremely sharp.

The most surprising change, however, saw Greg Montgomery, who just two weeks ago was starting quarterback, move to left halfback.

The tall Lansing player was the standout of Tuesday's practice. His speedy thrusts from the new spot look a fresh and aggressive by surprise.

Montgomery also showed a new feel of power.

In other shifts, Palmer Pyle moved up to replace Larry Cuffey, who suffered a foot sprain in Indiana. It will be either Dick Barker or Dave Northman in place of Fred Arbanas, who is moving from right to left and where he feels more at home.

Stories are keeping Cundiff, Kelly (knee injury) and John Anderson (knee injury) from their normal work. Kelly and Anderson are doubtful starters against Minnesota this Saturday, according to team doctor James Berg.



TOM WILSON



GREG MONTGOMERY



DICK BARKER

... More shake-ups in Spartan lineup ...

Minnesota Holds Passing Drill

Big 10 Teams Prepare Squads For Saturday's Football Games

BY THE ASSOCIATED PRESS
The following is a summary of practice sessions of Big 10 teams. Names of players who are not expected to play in Saturday's game are named in the reports.

Michigan
A new position, Steve Mitchell, as it nears the end of its routine-filled, football season against Indiana Saturday.

The Wolverines are disappointed with rigging their defenses for a single-wing attack for the first time in two years. Defense has been Michigan's weakest point all season.

Clarence Bonner, Oosterman Tuesday worked his usual assist. The Honesty's sensational improvement over last year. He said Michigan State as a gauger, Indiana last year and this season beat them 6-0.

Left halfback Dan Harper tested his injured leg in the Wolverines' session Tuesday but ran with a pronounced limp.

Minnesota
Minnesota suffered a new setback Tuesday with the loss of second string guard Ron Charon. Charon sprained his ankle during a morning session and apparently will be out of the Michigan State game Saturday. He was replaced by Dean Obergard.

The Gophers concentrated on improving their timing on offense. Coach Murray Warman saw put quarterbacks Joe Sawyer and Larry Johnson through a long passing drill.

Ohio State
Quarterbacks Jerry Fields and Ralph Gray practiced passing and punting Tuesday in preparation for Saturday's game with Iowa. They will take over Saturday-calling from injured veteran Frank Kemblak.

They looked pretty good out there Tuesday night, commented Coach Woody Hayes.

Hayes is taking no chances. Halfback Tom Matte also is being groomed as a quarterback in case anything happens to Fields or Gray.

Kremblas and center Danny Frank are the only Huskies on the injured list. Kremblas, already injured last of Saturday's game, suffers from a knee injury and rib separation. Frank is in University hospital with an arm infection, but doctors say he will be ready to play.

Illinois
L. T. Bonner, sidelined for two weeks with a shoulder injury, reclaimed his No. 1 right halfback post on the Illinois football team.

With most of the halfbacks healthy again, Coach Ray Elst realigned his first three backfields for the Illinois game with Wisconsin here Saturday.

Justice Coleman switched from right half to left half where he is stationed behind Marshall Starks. It's likely Coleman and Bonner play selective most of the time against Wisconsin.

Joe Krakowski and Don Grotke are sharing No. 3 left half while Doug Wallace is supplanting Bonner at right half.

The Illini drilled on their rushing attack which has faltered in recent games.

Northwestern
Northwestern Coach Aza Parseghian called off all contact work for the week, to prevent any further injuries.

The Wildcats have six men on the injured list but only two are doubtful for the Purdue game. They are backs Irv Cross and Mike Stock.

Stock jogged around the field Tuesday and Parseghian expressed hope that the sophomore fullback would be ready for Saturday's game.

The Wildcats went through a dummy scrimmage and concentrated on defending Purdue's power plays.

Indiana
Doctors declared Purdue University fullback Bob Jarus out of Saturday's Northwestern game with a bruised kidney.

Taken to St. Elizabeth hospital Sunday night for treatment of the injury suffered Saturday in the Butlermakers' 14-14 tie with Ohio State, Jarus also may miss the Indiana game, Nov. 22.

Jarus has been the team's leading ground game and scorer this season.

Wisconsin
Linebacker Jim Fraser and Jerry Stalung and halfback Bob Altman were on the sidelines with injuries during Wisconsin's football drill.

All three were hurt Saturday. A third lineman, Don Langford, worked some but is still hampered by an ankle injury received early in the season.

Coach Mill Brown began revising formations for the week-end with Illinois, postponing contact work until today.

Ram General Manager Pete Rozelle said it is true Gillman has not yet signed the contract.

But he has agreed to a new contract, Rozelle said. "We have a complete understanding, but the contract is not finalized. It probably won't be until the end of the season. The primary reason it hasn't is that it's simply a matter of time. We have a firm understanding with Sid for the future."

"He said he has no intention of leaving."

Rozelle said Gillman told him he received a "tentative" offer of a coaching job from someone not officially connected with a school, which was not named. But Rozelle said Gillman told him he is not considering the offer.

State News
SPORTS
November 12, 1955 John Vanden Hoede Page Five

LSU Cinch to Host Sugar Bowl Game

NEW ORLEANS (AP)—Unbeaten Louisiana State looks like a cinch for the host's role in the Sugar Bowl on New Year's Day, but an opponent for the speed-spurred bayou Tigers is everybody's guess.

LSU, rated the Nation's top football team in the Associated Press poll for the last three weeks, has only Mississippi State and ancient rival Tulane blocking its first perfect season in 50 years. The Tigers have breezed past eight opponents with comparative ease and routed Duke 50-18 last Saturday.

Barring any unexpected turn of events, LSU will make its fourth showing in the Sugar Bowl on Jan. 1, looking for its 19th victory in the deep south's No. 1 sports spectacle. LSU last lost to Texas Christian 3-2 in 1936 and came back the following year to bow to Santa Clara 21-14. Oklahoma smothered the Tigers 35-0 in 1950.

Won and lost records restrict the field of probable foes to a half-dozen teams. And Louisiana's segregation laws — prohibiting inter-racial athletic competition — will trim the list even deeper.

Resurgent North Carolina and a pair of Southwest conference teams — Texas Christian and Southern Methodist — are the probable opposition for LSU, almost assured of the South-eastern conference title and the National Championship.

The Sugar Bowl, of course, just isn't saying whom it will invite. Sugar Bowl President Claude (Mack) Simon, Tulane hero of the inaugural game in 1935, said Tuesday:

Red Schoendienst May Have TB
MILWAUKEE (AP)—The Milwaukee Braves said Tuesday night that second baseman Red Schoendienst has been a hospital patient since last Saturday, and there is a possibility that he has tuberculosis.

The veteran infielder remains in St. John's hospital in St. Louis where tests are continuing. The 35-year-old Schoendienst makes his home in St. Louis.

A Braves' spokesman quoted Dr. Ray Martin as saying there is a possibility he has tuberculosis. "There was no information on when a positive diagnosis could be expected."



QUICK START—George Durroneen, cross country ski champ, takes advantage of early snow in Vermont to condition himself for upcoming winter meets.

Enter Fraternity Playoffs

Psi U Captures Championship With 9-6 Win Over Delta Chi

Psi U defeated Delta Chi, 9-6, in IM football play Tuesday night.

The win made Psi U eligible for the fraternity playoffs.

Psi U opened the scoring in the second quarter on a 13-yard pass-try play from Bill Wilson to Brad Gaudin. Wilson passed to Ed Reuling for the extra point.

The win made Psi U eligible for the fraternity playoffs.

Psi U opened the scoring in the second quarter on a 13-yard pass-try play from Bill Wilson to Brad Gaudin. Wilson passed to Ed Reuling for the extra point.

The win made Psi U eligible for the fraternity playoffs.

Psi U opened the scoring in the second quarter on a 13-yard pass-try play from Bill Wilson to Brad Gaudin. Wilson passed to Ed Reuling for the extra point.

IM Results

FOOTBALL
Coral Gables 18, Sad Sacks 6
Hedrick 12, Real 6
Bailey 1, U. Bailey 3, 6 (overtime)
Stooges 12, Minnie 6
Psi U 9, Delta Chi 6
Bailey 6, U. Bailey 4, 9
AAR 20, AAR 17
Hixson 7, Butterfield 8, 9
Crusaders 7, Vets 1, 6
Vikes 17, Asher 9
Linworth 12, Urey 9
Downbeats 9, Puhars 6
Browns 6, AOC 2, 6
FOURTEEN
Sigma Chi 1, Triangle 0
Cottles 1, Rips 0

MEXICO CITY COLLEGE

Winter Quarter Jan. 2 to March 16
Spring Quarter March 19 to June 11
Summer Quarter June 22 to Aug. 28
Special Summer Session June 22 to July 31
Latin American Workshops June 22 to July 31

Approved for Veterans

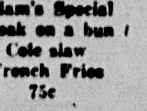
Director of Admissions
Mexico City College
Mexico 10, D.F.

A Good Place To Meet...
A Good Place To Eat...



ODAMS GRILL

Serving the best coffee and pie in town.
Just a stone's throw from Abbott Doris



Odams' Special
Steak on a bun /
Cold slaw
French Fries
75c

Plenty of Free Parking

1010 E. GRAND RIVER HRS. 7:00 A.M. - 1:00 A.M.

see well, look better
with contact lenses

Come in for the complete story on Wallace's contact lenses. You will be thrilled with their convenience and good looks. Tiny plastic lenses are ground and polished to your prescription, determined through an eye examination by our doctors. The lenses fit directly over the cornea and offer complete natural vision.

Eye examinations by
DR. W. C. JENSEN, registered optometrist

WALLACE OPTICIANS

State Theater Bldg., East Lansing - Ph. ED 2-3117
also offices downtown at 100 N. Washington, Ph. IV 2-1175

HELD!! OVER!!

STATE

FIRST SHOW 7:00 P.M.

Cat On a Hot Tin Roof

Elizabeth TAYLOR
Paul NEWMAN
Burt WES
Jack CARSON
John ANDERSON

— ADDED —
Carlson "TEXAS TOM" — also — "ROCKEM COWBOY"
NEXT BRIGITTE "La PARISIENNE"
BARDOT

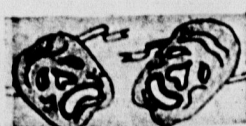
HEAVEN
in
MADES

Liberal Senators Support Johnson

Majority Leader's Program Called 'Excellent'—Proxmire

WASHINGTON (AP) — Sen. William Proxmire (D-Wis.) said Tuesday he and other senators he classifies as liberal will support strongly the legislative program laid down by Democratic leader Lyndon Johnson, of Texas.

L-C Spotlight



By JOHN MARTINEN

Student Representative on the Faculty Lecture-Concert Series America has passed through the Stone Age, Iron Age, and the Medieval Age. Now, we are in the Age of Anxiety. Everyone moves at an accelerated pace. What do we need for our few moments of relaxation? Mood music!

George Melachro created this type of music with his orchestra and strings. Now, hailed as one of the top popular orchestras in Great Britain and the United States, he visits MSU Thursday evening. Songs from "My Fair Lady" and Tchaikovsky selections are part of the evening's program. Also included are two specialty numbers by harp which could prove to be program highlights.

Walter Poff, the 32-year-old harpist, discovered a latent talent for playing the stringed instrument only after attending Western Reserve University and studying guitar. Before joining the Melachro organization, he appeared with both the Cleveland and Minneapolis Symphonies.

Alexander Nevsky is the screen film slated for screening in Fairchild Friday at 7:30 p.m. Nevsky is a fictionalized war hero from a thirteenth-century Russian history. He fights to save his Russian city-state from Tartar invasion.

In the final scenes, he tells his defeated Tartar foes to "Go home and tell all in foreign lands that Russia lives." Since then, the world has experienced a succession of dictatorial empires and Bolsheviks — all trying to prove that "Russia lives." Nevsky's words were indeed prophetic.

Notes to you: Join Thayer Soule as he takes you to "Beremuda" on the World Travel Series Saturday evening. Soule says that the island is difficult to leave and impossible to forget.

Sel Hurk, who is presenting Melachro on his first American tour, was featured on last year's National Orchestra. A performing here last week, he is visiting 37 cities while in the United States for only 42 days.

Professor to Speak At Chemical Society

Dr. F. L. Anderson, professor of inorganic chemistry at the University of Illinois, will speak before the MSU chapter of the American Chemical Society Thursday at 7:30 p.m. in 122 Keene Chemical Laboratory. His topic will be "The Nitrogen Derivatives of Phosphorus and Sulfur."

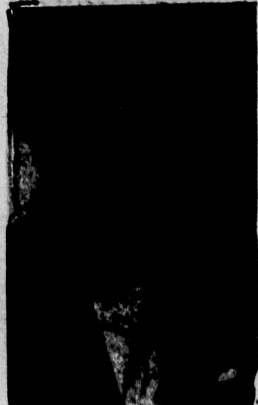
COEDS!

Serivity Fall Tees Are This Weekend -- Bring In Your Suits & Wool Dresses For Us To Clean So You Will Look Your Very Best

Free Parking In The Rear

Louis

shirt laundry • dry cleaning across from new student services bldg.



NILS OLSEN ... public affairs expert ...

Tonight! Public Affairs Expert Talks To Historians

The History Club will meet tonight at 7:30 in 42 Union with Dr. Nils William Olssen as their guest.

Dr. Olssen, public affairs advisor for British and Northern European affairs in the U. S. State Department, will be the guest lecturer. His speech will concern "U. S. - Scandinavian Affairs."

Dr. Olssen received his PhD from the University of Chicago in 1949 and was a professor of Germanic languages there. He has served as a newspaper editor and an assistant naval attaché in Stockholm during World War II.

In 1950 Dr. Olssen was U. S. public affairs officer in Iceland, and from 1952-56 he was director of the U. S. information service at Stockholm.

Refreshments will be served and anyone is welcome to attend the meetings.

Sem-Bot to Hear Guest Speaker

Dr. G. W. Prescott, professor of botany at MSU, will be the guest speaker tonight at the Sem-Bot meeting at 7:30 in 450 Natural Science.

Dr. Prescott, who has recently returned from Ecuador, will speak on "The High and Low Spots of Ecuador."

This meeting is open to the public, and anyone interested in botany is invited to attend.

INFORMATION

(Continued from Page 2)

PAN ORTHODOX STUDENT ASSOCIATION
7 p.m. Tower Room of Union. Wiverine picture with a short business meeting following in 34 Union.

HISTORY CLUB
7:30 p.m., 42 Union. Mr. Nils William Olssen, a former director of the U. S. Information Service at Stockholm will speak on "U. S. - Scandinavian Relations." Refreshments will follow.

PRE-LAW CLUB
7-8:30 p.m., 36 Union. Frank Mather of Bar Association will speak on "What to expect of law school and law profession." Everyone interested is welcome.

LES GOURMETS
7 p.m., Kellogg Center Cafe. Dr. Newcomer will speak on "What is new in the food industries."

FRENCH CLUB
7:30 p.m., International Center. Madame Marcelle Avell will speak.

INDUSTRIAL ARTS CLUB
7:30 p.m., 116 Ed. Bldg. The subject will be "Copper Enameling."

MEN'S ACTIVITIES COUNCIL
7 p.m., 307 Student Services. All members are requested to attend this meeting.

MSU HOTEL ASSN. MEETING
7:30 p.m., 58 Kellogg Center. "Hotel Holiday" kickoff meeting. Nomination for officers.

YWCA STUDENT WIVES
8 p.m., 1618B Spartans Village. Child Study Group for those interested in the two and three year old. Guest speaker: Mrs. Josephine Oudyn. "What Kinds of Behavior Can You Expect from Your Two or Three Year Old?"

PROMENADES
7 p.m., Open dancing. Women's Gym.

Student Interview Visit Successful

The first co-ordinated visit of the U. S. Civil Service Seventh Region held last week was a success, according to Jack Kinney, director of the Placement Bureau.

Sixteen federal agencies participated in this visit recently, interviewing approximately 100 students. Len Sherry, of the Seventh Civil Service Region and chief co-ordinator, was pleased at the result.

The same type of visit has been arranged for the coming March. This is the first time such a program has been tried in the Midwest.

PLACEMENT BUREAU

(B) Bachelor's degree (M) Masters (D) Doctor. Where no degree is indicated, all degree levels are eligible for interview.

EMPLOYERS
Archer-Daniels-Midland Co.
General Telephone Co. of Michigan
The Mutual Life Ins. Co. of New York

NOVEMBER 15 & 16, 1958
Chemists & Chem. Engineers.

NOVEMBER 16, 1958
General Business majors (B).
Insurance (B) (M), Econ. (B) (M), Gen. Bus. (B) (M) & Lib. Arts (B) (M) majors for Training Program in Sales & Home Office Administration. Interviewing for all fields in Elementary, Junior High, Senior High and Trade Schools. Civil Engineers (B) (M).

NOVEMBER 17, 1958
Mathematicians (M) (D), Statistics (M) (D) & Indust. Engrg. (M) (D) majors. Civil (B), Mech. (B), Elect. (B) & Indust. (B) Engrs. All Elementary (B) (M) teachers & all Secondary (B) (M) teachers. (Only December graduates are eligible.) Mech. (B) Engrs.

NOVEMBER 17 & 18, 1958
Physicists & Mathematicians. Elect. Engrs. Physicists. Elect. & Mech. Engrs. Physicists. Elect. & Mech. Engrs. Mech. & Elect. Engrs.

NOVEMBER 17 & 18, 1958
Production (B) (M) Mgmt. majors for Production Supervision, Mech. (B) & Elect. (B) Engrs. for Plant Engineering.

NOVEMBER 17 & 18, 1958
Engrs. (B) (M) & Mech. (B) (M) Engrs.
Production (B) (M) Mgmt. majors for Production Supervision, Mech. (B) & Elect. (B) Engrs. for Plant Engineering.

NOVEMBER 18, 1958
Marketing (B), Gen. Bus. (B) & Lib. Arts (B) majors for Sales & Sales Administration. Acc'tg. (B) majors for Auditing work. Mech. (B), Civil (B) & Elect. (B) Engrs. for Plant Engineering. Chemists (B) (M), Mech. (B) (M) & Chem. (B) (M) Engrs. for R. & D.

NOVEMBER 18, 1958
Engrs. (B) (M) & Mech. (B) (M) Engrs.
Chemists, Mathematicians, Physicists & Statisticians. Chem. Elect. Mech. & Met. Engrs.

NOVEMBER 18, 1958
Marketing (B), Gen. Bus. (B) & Lib. Arts (B) majors for Sales & Sales Administration. Acc'tg. (B) majors for Auditing work. Mech. (B), Civil (B) & Elect. (B) Engrs. for Plant Engineering. Chemists (B) (M), Mech. (B) (M) & Chem. (B) (M) Engrs. for R. & D.

NOVEMBER 18, 1958
Marketing (B), Gen. Bus. (B) & Lib. Arts (B) majors for Sales & Sales Administration. Acc'tg. (B) majors for Auditing work. Mech. (B), Civil (B) & Elect. (B) Engrs. for Plant Engineering. Chemists (B) (M), Mech. (B) (M) & Chem. (B) (M) Engrs. for R. & D.

THURSDAY ONLY FREE WED. ONLY
W Galton Coka, Root Beer, or Orange With 2 Regular One Item PIZZAS DELIVERY SERVICE — ED 2-6517

VARSITY DRIVE-IN

1217 E. Grand River East Lansing

NOW MICHIGAN ... AND A LITTLE CHILD SHALL LEAD THEM. BUT IT REQUIRED THREE TO MAKE THIS LOVEMATCH!

Complete Shows At 1:00-3:04 5:06-7:16-9:34

THE SOLIDITY ADVENTURE EVER DARED BY MAN FROM THE EARTH TO THE MOON

ATTEND EITHER 7 or 9 P.M. SHOW FRIDAY NIGHT AND SEE OUR "BREAK PREVIEW"!!

NO ADVANCE IN PRICES!

'Cheaper by the Dozen'

Best Seller Authoress To Talk Here Thursday

The author of "Cheaper by the Dozen" will address Michigan homemaking teachers here Thursday. Dr. Lillian Gilbreth, who wrote the well-known book, will discuss "Technology, the Family and the Changing World."

New Magazine Seeks Material From Students

"Session," a new magazine featuring quality fiction, commentary and art work, is looking for material from undergraduate and graduate writers.

Session is aimed at filling a gap left by the American Mercury after the twenties and New Yorker after the thirties. It will be printed on quality paper in an attractive format and steer away from the usual and little magazine approach.

It will seek contributions primarily from members of current generation.

"Session" is being started by a group of men in their twenties, all of whom have professional experience.

All articles, short stories, verse, line drawings and cartoons will be carefully considered. Payment will be on publication. Persons wishing acceptable pieces to be returned must include a stamped, addressed envelope.

Material should be sent to: Poolie, Apt. 8B, 833 West Ave., New York 25, N.Y.

MSU HOTEL ASSN'S Hotel Holiday

"New York, New York"

Semi-Formal Dinner Dance

Nov. 15, 6:30 p.m. - 12:00 p.m.

Kellogg Center
Floor Show
Menu Feature:
Eye of Prime Rib, Steak
Caesar Salad
Open to Public
Tickets: \$3.75 ea.
Union & Rm. 42 Kellogg Center

WE CAN HELP!

When Appearance Counts

Senior Interviews

A neat, well-groomed appearance may be more important to you than you think. Why take chances? Let FLASH insure your immaculate appearance in a minimum amount of time.

Open Daily 8 a.m. to 9 p.m. Saturday Till 7 p.m.

1 Hour Dry Cleaning
4 Hour Shirt Laundry
At No Extra Cost

Flash CLEANERS

FRANDOR SHOPPING CENTER

"We carry the LARGEST and FINEST supply of smoking supplies in East Lansing."

The SMOKE SHOP

Across from the Union

TODAY & THURS. | GARY COOPER as the "MAN OF THE WEST"

GLADMER

THEATRE - PHONE IV, 2-9831
TOMORROW IS SUPER BARGAIN DAY

SEE TWO FEATURES — ALL DAY PREVIEW
GARY COOPER in "MAN OF THE WEST"
PLUS — OUR NEW PICTURE —
★ PREMIERE SHOWING! ★
BE THE FIRST TO SEE IT!

FROM THE EARTH TO THE MOON

THE SOLIDITY ADVENTURE EVER DARED BY MAN

TECHNICOLOR

NO ADVANCE IN PRICES!