

# MSU, Michigan Clash Saturday



**BY HARDY CHRIST**  
State News sports Editor

Another chapter in the book of Michigan State-University of Michigan grid classics will be written Saturday when the Spartans meet the Wolverines at 1:30 p.m. in Spartan Stadium.

A capacity crowd of some 76,000 will be on hand when the two teams open their Big 10 season. It will mark the 51st edition of this spirited rivalry, which began in 1898.

Both the Spartans and Wolverines were victorious in their opening tests last weekend against non-conference foes. The Spartans beat California, 32-12, while the Wolverines edged Southern California, 20-19.

The contest Saturday will pit two huge lines against each other, with such men as Michigan's Gary Prahsat (222), Jerry Marcinak (236), and Don Deskins (239) and State's Fran O'Brien (228), Ellison Kelly (231)

and Palmer Pyle (240).

For the Spartans, Capt. Sam Williams and Dick Barker will be at the ends, O'Brien and Pyle will start at the tackles, John Middleton and Kelly at guards and Jim Chastain at center.

Michigan's starting line will include Prahsat and Walter Johnson at ends, George Genyk and Deskins at tackles, Marcinak and Alex Callahan at guards and Jim Dickey at center.

Behind the line, however, will emerge widely contrasting backfields. For the Wolverines, the emphasis will be on size and power. The Spartans will rely on speed and quickness.

One change in the Spartan backfield puts Don Arent at fullback instead of Bob Bereton. Bereton was the starter against California last weekend, but suffered a bruised hip which has not responded to treatment.

The remainder of State's back-

field will include Dean Look and Art Johnson at halfbacks and Mike Panitch at quarterback.

Michigan's backfield, which averages 200 pounds per man, places halfbacks Fred Julian and Brad Myers and Capt. John Herrstein at fullback.

In this colorful rivalry, the Wolverines hold a decided edge, winning 35 and losing only 12. Three games ended in ties.

But in the more recent renewals of the rivalry, State has picked up some ground. Since 1950, the Spartans have won six of eight.

Contrast this to a record of only two wins and three ties for MSU in the first 28 contests between the two schools.

The Spartans have a two-game winning streak going against Michigan. They won a year ago, 35-6, and also took the 1956 contest, 9-0.

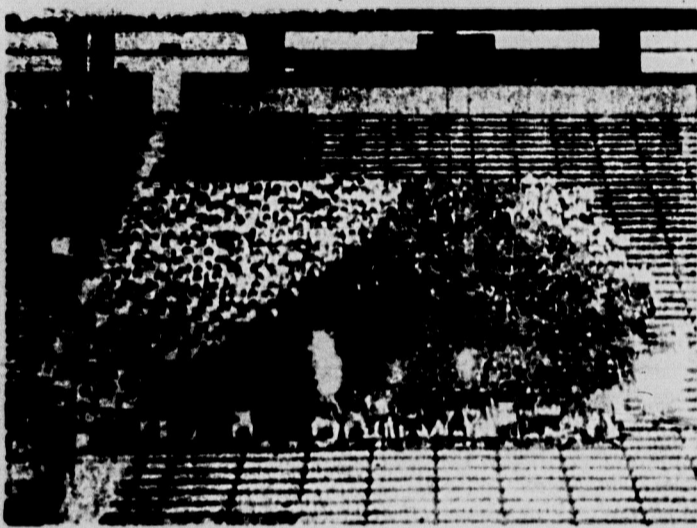
## Michigan State News

VOL. 50, No. 61

EAST LANSING, MICHIGAN—FRIDAY, OCTOBER 3, 1958

PRICE: FIVE CENTS

### Strike Closes Auto Plants; Settled After Negotiation



THE U OF M BUS traveling to Michigan State, carrying writing, three-dimensional stunts, and Spartan Stadium being built will be featured by the Black 'S' as they debut this Saturday in new green and white capes. The card section will not perform for the California game, but will be on hand for the remainder of the season.

#### 250,000 Quit Jobs Thursday

GM, UAW, Negotiate All Through Night

DETROIT (AP)—United Auto Workers and General Motors Corp. announced at 9:49 p.m. Thursday they had reached agreement on a three-year contract, less than 12 hours after GM plants across the country went out on strike.

Seaton called it a "sound and fair" pact.

The announcement ended nearly 36 hours of continuous bargaining broken up only by occasional lunch breaks.

Seaton said the agreement provided for a wage-inflation settlement in GM's Chevrolet and Fisher body divisions.

The contract agreement must be ratified by Monday, Oct. 20, Seaton said.

"This agreement represents a meeting of minds. It was arrived at through the give and take of the bargaining table. It should mean to employees in GM plants across the country three good years of stability."

It took the union less than an hour to close in the automotive end of the world's largest manufacturing company.

About 250,000 UAW members walked off their jobs at 124 plants in 11 cities from coast-to-coast.

Negotiators headed by UAW International President Luther and GM Vice President Louis Stroh continued their all-night effort at a settlement up to and past the deadline.

When the deadline came, workers in some plants throughout the country already had walked out. The negotiators had agreed in all but certain specifications of a contract that would run for 1960.

#### Prof Made New Head of College

Miller to Head Portland State

Dr. J. W. Miller has been named as the new president of Portland State University, beginning next Monday.

Miller, professor of English, was elected president of the Oregon Board of Higher Education.

Miller was organized as a legal arts college. He was enthusiastic about his appointment.

Miller is married and has two children. He was the president of a young college whose motto is "Bright." Miller

#### 49 each

Appointment was announced by John Richardson, chairman of the Oregon Board of Higher Education.

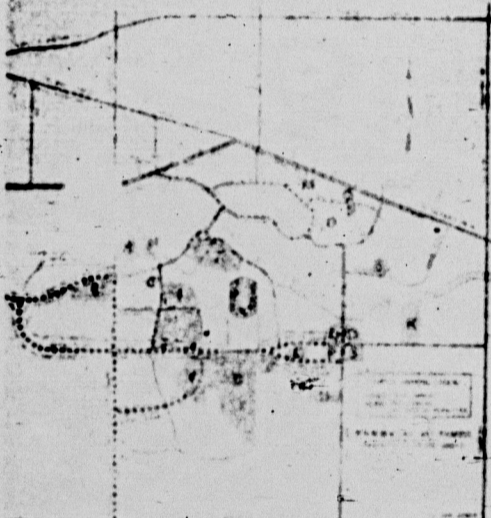
Miller will work with the board as an executive and is eager to get to work.

Miller, who has been at PSU since 1946, was previously the dean of the College of Education.

Miller also is editor of the "Journal of Arts and Sciences," which is just finishing its 10th year of publication at the College of Science.



Members of the 10th Annual Career Carnival staff for next Monday and Tuesday set up booth displays. The event, to be held on the second floor of the Union, is a vocational information service for students.



FOOTBALL TRAFFIC will follow the above pre-game routes from 11 noon-1:30 p.m. this Saturday and from 1:30-1:45 p.m. on Sunday.

#### Lee Clubs to Appear at Kellogg

The nation's outstanding Lee Clubs from MSU and other colleges will appear in joint concert at Kellogg Center.

The concert at 7:15 and 8:15 p.m. will be directed by Philip Lee, professor of voice in the Department of Music, who will present a series of songs and college songs.

MSU Men's Glee Club will appear in 1958 anniversary concert. Directed by Philip Lee, professor of voice in the Department of Music, who will present a series of songs and college songs.



SENECA U OF M has a tradition of painting Sparty blue and yellow before the annual football clash and since this is a tradition MSU is trying to do it. The picture shows the duty being done at the door.

#### Russians Resume A-Tests

Reds Announce Nuclear Blasting

MOSCOW (AP)—The Soviet Union announced Thursday night it has resumed nuclear test blasting after a six-month suspension.

The Soviet acknowledgment came within an hour after Washington announced detection of the second pair of Soviet blasts this week. (The first was Tuesday.)

Soviet Foreign Minister Andrei Gromyko announced before the Supreme Soviet March 31 the decision to stop the tests.

At that time, a TASS statement Thursday night said, the Kremlin said that if America and Britain failed to follow its example "the government of the U.S.S.R. would be free to act in the question of Soviet nuclear tests bearing in mind the security interests of the U.S.S.R."

TASS accused the United States and Britain of using the Soviet test suspension "to secure the greatest possible military advantage for their side. Thus ignoring the will of the people."

It declared:

"This is evidenced by the fact that precisely after March 31, that is, the moment the Soviet Union suspended nuclear tests and called upon other countries to follow suit—the governments of the United States and the United Kingdom undertook the largest ever series of test of atomic and hydrogen weapons."

"The United States alone has set off about 40 nuclear shots during this period."

#### Spartan Village Note

Harrison Road traffic will be one way south-bound for about an hour after MSU's next four home football games, according to Richard Bennett, ass't director of the department of public safety. Bennett advised Spartan Village residents to use the exit onto Mt. Hope if north-bound.

#### Chiang Misjudges Dulles Continues Support For Nationalist Government

WASHINGTON (AP)—Secretary of State Dulles sought to reassure Chiang Kai-shek Thursday of continued U.S. support for the Nationalist China government.

Dulles sent a message to Chiang on the eve of Chiang's return Wednesday against statements by Dulles the day before.

Dulles said Thursday he wanted to strengthen our confidence in Chiang Kai-shek, what he called an exaggerated idea of a shift of policy.

Although the news conference remarks two days ago were widely interpreted as a shift in policy, Dulles said today that he had no intention of changing his policy.

They said this had policy remains. No abandonment of Red Chinese aggression but willingness to negotiate peacefully if support by other nations of the existence of Nationalist China on Formosa.

But this message, Dulles said Tuesday, was Chiang's reply.

#### Viewpoint Starts 3rd Year on Air

Viewpoint, WKAR radio Sunday feature, begins its third year on the air Sunday at 2 p.m. on WKAR.

The "Mexico of General de Gaulle" Major John Harrison, AFROTC instructor and the program's regular host, will have as his guests Dr. John Gray, professor of history, and Dr. George Jovack, associate professor of foreign languages, both of whom recently returned from France.

#### 'Anne Frank' Tickets Go on Sale in Union

Tickets for the play, "The Diary of Anne Frank" go on sale this morning at 8 in the Union ticket office.

#### Judges Name Ball Finalists

Finalists for Harvest Ball queen are Bonnie Dyer, Lansing junior; Betty Kallenbach, Fredua, New York, junior; Barbara Reazza, Grand Haven sophomore; Marlene Summerfield, Lansing sophomore; and Joanne Wolf, Lansing sophomore.

The queen has been selected, but the decision will not be revealed until the Harvest Ball, Saturday, October 11. The semi-formal dance will be at Kellogg Center from 9-12 p.m. with Edith's orchestra playing.

#### Today Ends Signups For J-Hop Chairmen

Today is the final day for signing for committee chairmen for the J-Hop Fellowship are available in the Union Concourse.

#### Secretaries Wanted

Interviews for the All University Student Government are being held in 239 Student Services. People qualified to do secretarial work are particularly wanted. Interviews will be held between 3 and 5 p.m. on Wednesday.

#### Today Ends Signups For J-Hop Chairmen

Today is the final day for signing for committee chairmen for the J-Hop Fellowship are available in the Union Concourse.

#### Secretaries Wanted

Interviews for the All University Student Government are being held in 239 Student Services. People qualified to do secretarial work are particularly wanted. Interviews will be held between 3 and 5 p.m. on Wednesday.

#### Today Ends Signups For J-Hop Chairmen

Today is the final day for signing for committee chairmen for the J-Hop Fellowship are available in the Union Concourse.

#### Secretaries Wanted

Interviews for the All University Student Government are being held in 239 Student Services. People qualified to do secretarial work are particularly wanted. Interviews will be held between 3 and 5 p.m. on Wednesday.



THE MSU PLAYERS east of "The Tender Troop" were gathered to Lansing and is off on a seven week tour of eight European and Middle East countries where the play will be performed for servicemen stationed abroad. The troop leaves McGuire Air Base, Base in New Jersey Friday for Frankfurt, Germany.



# MSU Fulbright Scholars Brief Students on Overseas Study

**EDITOR'S NOTE:** This is the first of a series of four articles describing Fulbright programs and awards.

Comments that have come to Dean Osgood's office from Students abroad show that study and living in foreign countries have been stimulating experiences. The quotations given below from letters of such students demonstrates the keen interests that are awakened by new surroundings, and the reappraisal

of values that often takes place. **GERMANY:** "The thing I like best about the German system of higher education is that time is allowed to visit any classes one desires for the first several weeks. After this time one can choose which courses would be worthwhile pursuing, and then

register for them. **FRANCE:** "Fulbright trips can never be overcautious against the obvious spending. Although we sometimes wonder how to end the month with the money we receive, the French students live on much less than we do."

## Full Slate Scheduled By Churches

Supper Club has scheduled a supper Sunday evening at 5:30. Herbert Runyon, assistant professor of administration and education services, will discuss his recent visit to Russia.

Evangelical Campus Christian Fellowship will conduct their Sunday worship at 6:30.

The Y-WCA will have its weekly meeting on Saturday morning at 9:30. A victory service will be held at the Y.

The Student Foundation of Michigan will meet Sunday afternoon at 2:30. A fast forum for students is scheduled for Sunday morning at 9 at the College World Wide Commission.

Methodist Episcopal Church will be observed at Peoples Church Sunday at the 9:30 and 11:30 services.

Methodist Episcopal Church will meet Sunday evening at 6:30 at All Saints Episcopal Church. The Rev. Philip H. Jones will be the speaker.

Delta Delta has scheduled a pep game warm-up at the Lutheran Chapel.

Y-WCA has planned an evening after the pep talk for Saturday. U of M News-Club members are invited to join at the Student Center at 11:30 a.m. and a coffee hour after the game. A picnic and high school softball game is planned for Sunday at 2 p.m.

The Philosophy Club meets Sunday evening at 7.

A supper meeting has been planned for 5 p.m. Sunday by the Lutheran Student Association.

The Stanley J. Roberts director of the college will be the speaker.

Evangelical Lutheran Fellowship will meet Sunday evening at 7:30.

Evangelical Lutheran Fellowship will meet Sunday evening at 7:30.

Evangelical Lutheran Fellowship will meet Sunday evening at 7:30.

Evangelical Lutheran Fellowship will meet Sunday evening at 7:30.

Evangelical Lutheran Fellowship will meet Sunday evening at 7:30.

Evangelical Lutheran Fellowship will meet Sunday evening at 7:30.

Evangelical Lutheran Fellowship will meet Sunday evening at 7:30.

Evangelical Lutheran Fellowship will meet Sunday evening at 7:30.

Evangelical Lutheran Fellowship will meet Sunday evening at 7:30.

Evangelical Lutheran Fellowship will meet Sunday evening at 7:30.

Evangelical Lutheran Fellowship will meet Sunday evening at 7:30.

TODAY & SAT. **BRANDON DEWILDE & LEE MARVIN** in "THE MISSOURI TRAVELER"

## GLADMER

THEATRE - PHONE IV. 2-9831

STARTS SUNDAY

"A riot of fun, frivolity..." - REDBOOK MAGAZINE



THORNTON WILDER'S GREATEST COMEDY


### The Matchmaker

SHIRLEY BOOTH ANTHONY SHIRLEY McLAINE PAUL

SHOWS START AT 1:00 - 2:40 - 4:45 - 6:55 - 9:05

LATE "RHAPSODY" CARTOON ON TV "Ghost Writers"

Striking from the roof of the skies...comes the first great spectacle of the jet age!



ROBERT MITCHUM ROBERT WAGNER RICHARD EGAN MAY BRITT LEE PHILIPS

## THE HUNTERS

COLOR BY DE LUXE CINEMASCOPE

STARTS SUNDAY! FIRST SHOW 1:00 P.M.

Program Information Please Dial ED 2-5817

LAST SHOW 3:00 P.M.

Weekday Matinee Adults 50c

SATURDAY 1:00 P.M.

Nites-Sun Holidays Adults 75c

NOTE... LATE SHOW TONIGHT AT 10:30 P.M.

**ATTENTION M.S.U. STUDENTS (INCLUDING MARRIED STUDENTS) IT'S NOT TOO LATE TO ENROLL IN ALL STUDENT GOVERNMENT HEALTH PLAN**

Applications Being Accepted Until **OCT. 7, 1958**

FOR INFORMATION AND APPLICATIONS CALL EITHER **PAUL LESHER** AT ROOM 336 STUDENT SERVICES BLDG. OFFICE HOURS 4 P.M. - 5 P.M. MON. THRU WED. 1 P.M. - 2 P.M. THUR. - FRI. OR **McKNIGHT & LYMAN, AGENCY** 1002 MICH. NATIONAL TOWER - LANSING. PHONE IV 4-1119 OFFICE HOURS 8:30 to 5 P.M. **DO IT NOW!**

**CREST Drive-In Theatre** ON U.S. 16 - EAST LANSING

Fri. (4) Features Sat. (5) FREE COFFEE & DONUTS SAT.

**Ma and Pa Kettle AT WAIKIKI** Marjorie MAIN - Percy KILBRIDE

No 1 Shown at 7:00

All New! All-Out Adventure **THE LONE RANGER** "And The Lost City Of Gold" TONTO

No 2 Shown at 8:15

M-G-M presents a candid cannibal comedy **Jose Ferrer The High Cost of Loving** Joanne Gilbert Jim Backus Gena Rowlands

No 3 Shown at 10:00

**AUDIE MURPHY - GIA SCALA RIDE A CROOKED TRAIL** COLOR WALTER MATTHAU - HENRY SILVA - IDANNA MOORE

No 4 Shown at 11:30

5th Hit - **THE LAST PARADISE** SUNDAY & MONDAY - 2 Top Hits

"...with this key I thee wed..." **WILLIAM HOLDEN SOPHIA LOREN TREVOR HOWARD "The Key"** CINEMASCOPE

Shown Twice at 7:07 and 11 p.m.

The Story of A Maiden... **THE LAST PARADISE** A Warrior... And the Paradise they Challenged!

TODAY IS SUPER BARGAIN DAY! ALL DAY PREVIEW - SEE TWO FEATURES "THE NAKED AND THE DEAD" and "DAMN YANKEES"

The stars! The greatness of the N.Y. show!

**MICHIGAN THEATRE - PHONE IV. 2-9831**

STARTS TODAY!

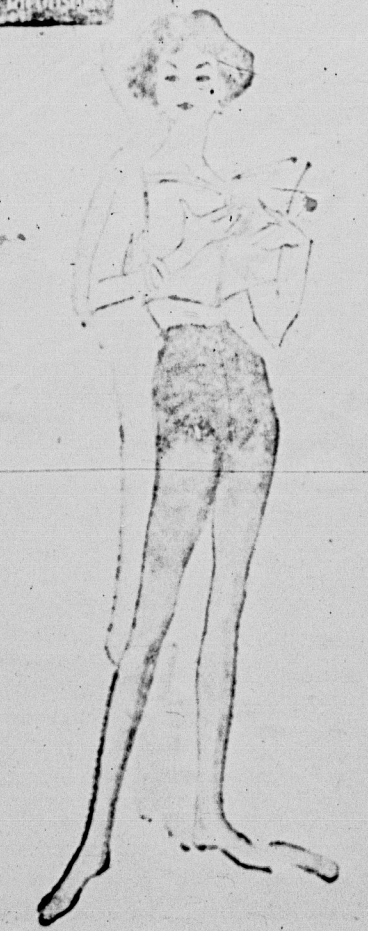


TECHNICOLOR

TAB HUNTER

VERDON WALSTON

but how can I wear a bikini with tights? It's easy... full-fashioned nylon stretch tights are attached to their own nylon power net pantie girdle. \$5.95



"Have Window Will Travel" Moved By Volkswagen Inspired By The Store With The Red Door

JENISON

T

O

N

I

G

H

T

FOUR FRESHMEN

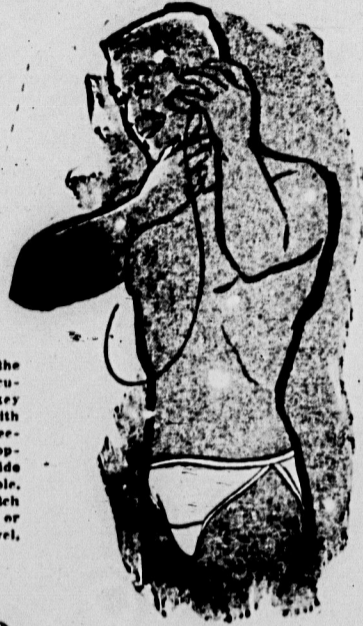
SHOP DOWNTOWN ALL DAY TODAY . . . 9:30 A.M. to 9 P.M.



New..Daring..Exciting..  
The Bikini Style for Men!

JOCKEY  
SKANTS  
BRIEFS

made only by  
Coopers



For the active man . . . here's the newest, most unique idea in masculine underwear comfort! Jockey skants are cut high at the side with a low waistband for complete freedom of movement. Tailored by Coopers, they fit perfectly and provide the briefest coverage possible. Skants are made of 100% stretch nylon in choice of White, Red or Black. S-M-L. Wonderful for travel, easy to pack.

● White } \$1.50  
● Black }  
● Or Red }

KNAPP'S STORE FOR MEN—SRUIT FLOOR

Have You Heard About the New  
STUDENT CHARGE ACCOUNT AT KNAPP'S!

Designed for students through college age, each account is opened with the written approval of parent or guardian, is in the name of the student and the bills are sent directly to them so that each pays for his or her own purchases.

VISIT OUR CREDIT DEPT. THIRD FLOOR

## Knapp's Basement Store

SHOP ALL DAY AND NIGHT TODAY FROM 9:30 A.M. TO 9 P.M.

ARCH CUSHIONED  
SHOES FOR GYM



Real Value  
NEWS!

WOMEN'S WHITE  
TENNIS OXFORDS

\$2.99

Really fine shoe for tennis and sports. Adjust laces for snug comfort. Soft cushioned arch and insole, crepe-type sole in anti-skid, light, sure-footed. Washable in White, sizes 4 to 10.

MEN'S CANVAS  
TENNIS SHOES

\$4.99

Oxford styles that are appropriate for gym sessions or other sports. With quick-gripping, non-skid soles, they're cushioned right to the toes. Washable, in White, sizes 6 1/2 to 11.

SHOE DEPT. KNAPP'S BASEMENT STORE

Liebermann's  
Come SEE! Come LEARN!



. . . at our Eighth annual

TIE-TIE

GIFT WRAPPING SCHOOL

Featuring Miss Mary West

The country's leading stylist

WHEN: Tuesday and Wednesday  
October 7 and 8  
2:30 p.m. and 8:00 p.m.

WHERE: Lansing Y. W. C. A.

Call for FREE TICKETS

in our Gift Department

Liebermann's

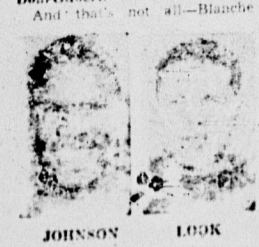
107 South Washington Ave.

# Gridders Rank High :: In Football Forecast

EDITOR'S NOTE: The following is the last of a series of four articles giving a preview look at each Big 10 football team before the season opens. Today's preview concerns Michigan State.

Despite the loss of 22 lettermen from its once-beaten 1957 team, including a dozen important figures, the Spartans should once again rank as one of the better teams in the Big 10. Only because of Coach Duffy Daugherty's insistence on using upwards of 20 men in each game, the Spartans are left with a well-experienced eleven. Included in the list of departures are all-Americans Valt Kowalezyk and Dan Currie, along with four all-Big 10 selections in Currie, Kowalezyk,

Jim Nibowski, and Pat Burke. Other top performers who will be missed include Dave Kaiser, who won immortality by booting a winning field goal in the 1956 Rose Bowl game, ends only Kotowski, Bob Jewett, and Larry Harding; and fullback Don Gilbert.



And that's not all—Blanche Martin, regular halfback, a senior, was injured during spring practice and will be out for the 1958 season. Martin was State's outstanding runner as well as the top punter.

The entire 1957 backfield will move in a notch to take the places of Nibowski, Kowalezyk, Martin and Gilbert. Three new additions include Mike Patton, halfback; Don Lusk and Art Johnson, and fullback Bob Bechtel. And this year's top goal line effort will be led by Coach Daugherty's son, Capt. Langworthy, who is a senior. Among Spartans who are returning this fall, 10 players include the presence of a solid core of experienced players, good speed, a strong running attack,

and the presence of some highly promising sophomores.

The Spartans this year have the biggest starting line ever at MSU. Five of the seven men who will start on the line were either first stringers or close to it last fall. The tackles include Palmer, 245, and Fran O'Brien, 235. Ellison Kelly, senior guard who like O'Brien has been virtually a regular for two years, weighs 235. At the other guard is John McLean, two-year letterman who tips 195 scales at 198. The center spot is being held down by Jim Chastain, 205-pound junior.

Art Williams, a letterwinner in 1957 and 1958, at guard but who sat out last season with a bad knee, has been moved to center, behind Chastain.

Other experienced hands at the interior line positions include left tackle LaPine and Jerry Mangold, guard Ron Rieken, and center Dan Wright.

Carl Stone, Williams, the regular top pass-receiver, is in his first year. The only freshman at the other wide receiver spot is a senior who was drafted from the football program at Michigan State.

A couple of other players who are returning are Fred Arbans and Jerry Horn, who will back up Williams and Burke at the end.

The 22-12 victory over California last Saturday is evidence enough that the Spartans are one of the powers who will be in the game when the season opens at the State Stadium on Saturday.

IN CONCERT  
DIRECT FROM THE  
LONDON PALLADIUM

TED HEATH  
AND HIS  
MUSICAL  
ORGANIZATION

with  
★ Bobby Britton  
★ Miss Music  
★ Ronnie Verrel

WED. OCT. 15

CIVIC CENTER

ONE SHOW ONLY 8:30

—ALL SEATS RESERVED—  
\$1.65 - \$2.50 - \$3.50

TICKETS ON SALE AT  
STATE RECORD SHOP,  
East Lansing  
PARAMOUNT NEWS  
CIVIC CENTER

and the presence of some highly promising sophomores.

The Spartans this year have the biggest starting line ever at MSU. Five of the seven men who will start on the line were either first stringers or close to it last fall. The tackles include Palmer, 245, and Fran O'Brien, 235. Ellison Kelly, senior guard who like O'Brien has been virtually a regular for two years, weighs 235. At the other guard is John McLean, two-year letterman who tips 195 scales at 198. The center spot is being held down by Jim Chastain, 205-pound junior.

Art Williams, a letterwinner in 1957 and 1958, at guard but who sat out last season with a bad knee, has been moved to center, behind Chastain.

Other experienced hands at the interior line positions include left tackle LaPine and Jerry Mangold, guard Ron Rieken, and center Dan Wright.

Carl Stone, Williams, the regular top pass-receiver, is in his first year. The only freshman at the other wide receiver spot is a senior who was drafted from the football program at Michigan State.

A couple of other players who are returning are Fred Arbans and Jerry Horn, who will back up Williams and Burke at the end.

The 22-12 victory over California last Saturday is evidence enough that the Spartans are one of the powers who will be in the game when the season opens at the State Stadium on Saturday.

Art Williams, a letterwinner in 1957 and 1958, at guard but who sat out last season with a bad knee, has been moved to center, behind Chastain.

Other experienced hands at the interior line positions include left tackle LaPine and Jerry Mangold, guard Ron Rieken, and center Dan Wright.

Carl Stone, Williams, the regular top pass-receiver, is in his first year. The only freshman at the other wide receiver spot is a senior who was drafted from the football program at Michigan State.

A couple of other players who are returning are Fred Arbans and Jerry Horn, who will back up Williams and Burke at the end.

The 22-12 victory over California last Saturday is evidence enough that the Spartans are one of the powers who will be in the game when the season opens at the State Stadium on Saturday.

Art Williams, a letterwinner in 1957 and 1958, at guard but who sat out last season with a bad knee, has been moved to center, behind Chastain.

Other experienced hands at the interior line positions include left tackle LaPine and Jerry Mangold, guard Ron Rieken, and center Dan Wright.

Carl Stone, Williams, the regular top pass-receiver, is in his first year. The only freshman at the other wide receiver spot is a senior who was drafted from the football program at Michigan State.

A couple of other players who are returning are Fred Arbans and Jerry Horn, who will back up Williams and Burke at the end.

The 22-12 victory over California last Saturday is evidence enough that the Spartans are one of the powers who will be in the game when the season opens at the State Stadium on Saturday.

Art Williams, a letterwinner in 1957 and 1958, at guard but who sat out last season with a bad knee, has been moved to center, behind Chastain.

Other experienced hands at the interior line positions include left tackle LaPine and Jerry Mangold, guard Ron Rieken, and center Dan Wright.

Carl Stone, Williams, the regular top pass-receiver, is in his first year. The only freshman at the other wide receiver spot is a senior who was drafted from the football program at Michigan State.

A couple of other players who are returning are Fred Arbans and Jerry Horn, who will back up Williams and Burke at the end.

The 22-12 victory over California last Saturday is evidence enough that the Spartans are one of the powers who will be in the game when the season opens at the State Stadium on Saturday.

Art Williams, a letterwinner in 1957 and 1958, at guard but who sat out last season with a bad knee, has been moved to center, behind Chastain.

Other experienced hands at the interior line positions include left tackle LaPine and Jerry Mangold, guard Ron Rieken, and center Dan Wright.

Carl Stone, Williams, the regular top pass-receiver, is in his first year. The only freshman at the other wide receiver spot is a senior who was drafted from the football program at Michigan State.

A couple of other players who are returning are Fred Arbans and Jerry Horn, who will back up Williams and Burke at the end.

The 22-12 victory over California last Saturday is evidence enough that the Spartans are one of the powers who will be in the game when the season opens at the State Stadium on Saturday.

Art Williams, a letterwinner in 1957 and 1958, at guard but who sat out last season with a bad knee, has been moved to center, behind Chastain.

Other experienced hands at the interior line positions include left tackle LaPine and Jerry Mangold, guard Ron Rieken, and center Dan Wright.

Carl Stone, Williams, the regular top pass-receiver, is in his first year. The only freshman at the other wide receiver spot is a senior who was drafted from the football program at Michigan State.

A couple of other players who are returning are Fred Arbans and Jerry Horn, who will back up Williams and Burke at the end.

The 22-12 victory over California last Saturday is evidence enough that the Spartans are one of the powers who will be in the game when the season opens at the State Stadium on Saturday.



Only Dietzgen . . . has these great features

Professional engineers say Dietzgen's new slide rules embody the greatest advances in design in more than a quarter century. Dietzgen's exclusive Micromatic Adjustment permits perfect alignment of the scales at all times. Simple resetting of one screw does it. The end plates need not be loosened; fit and action of the slide is never disturbed.

Dietzgen's automatic slide tension insures perfect slide action wherever and whenever these rules are used. Slides cannot bind or stick—nor become loose so errors may result from accidental slide movement. These are truly great slide rules. Important new scales added. New super-safe carrying case. See them at your Dietzgen dealer today.

AT YOUR BOOK STORE

DIETZGEN  
Micromatic Slide Rules

Distinctive Dining  
**EAGLE CAFE**  
Downtown Lansing  
(Visit Us After The Games)

Open  
Until 1:00 A.M.

Parking

Well groomed  
for success

Eyewear plays an important role in the appearance of the well-groomed man. For the man discriminating in his appearance, Wallace's recommend Harlequin's GLOBEMASTER, a new concept in men's eye frames with the popular continental look. In London Grey or Brazilian Black.

eye examinations by  
DR. W. C. JENSEN, registered optometrist

**WALLACE OPTICIANS**  
State Theater Bldg., East Lansing • Ph. ED 2-3117  
also offices downtown at 107 N. Washington, Ph. IV 2-1175

Highlights

THE DEADLINE for all sports is the fraternity football season. All 10 teams football season will be in full swing by the end of the week.

OFFICIAL page will be published Monday, October 13, 1958.

FOOTBALL

Michigan State will play Michigan on Monday, October 13, 1958, at 10:30 a.m. in the State Stadium. Schedules will be published in the State News.

INTERNATIONAL BOWLING

Michigan State will play Michigan on Monday, October 13, 1958, at 10:30 a.m. in the State Stadium. Schedules will be published in the State News.

Fashion Designed.  
Master Crafted!

**Waller's**  
CIGARETTE LIGHTERS

The Distinctive Jewels  
Lighter with "Torque Action"

TUXEDO \$10.00

Light-colored silver in yellow or a field of white silverplate. Price for other Waller's Cigarette Lighters \$4.95 to \$11.75

CONVENIENT CREDIT

**RANNEY JEWELERS**

Next to State Theatre  
Certified Gemologist

# Burdette Haunts Bronx Bombers

## Stymies Yanks for 4th Time

Mantle's 2 Homers Can't Stop Braves

MILWAUKEE (AP)—Lew Burdette, still a hero, smashed a three-run homer capping a record seven-run first inning Thursday that carried the Milwaukee Braves to a 13-5 victory over the New York Yankees and a 2-0 lead in the World Series.

Burdette, the angular right-hander who whipped the Yanks three times last year, led his record-setting streak at 24 to an unbroken run in the first inning and, leading 13-2, was needed for three runs in the second on homers by Hank Bauer and Mickey Mantle.

But that was all he lost from the tough that made him everybody's 1957 star.

He allowed 7 hits, struck out 5, walked one and retired 15 batters in order between the fourth and ninth in pitching his fourth straight complete game victory over the American League champions. And his home-run rally over the 355-foot mark with two on base, settled the issue hardly before the County stadium crowd of 46,367 had found its seats.

Today is an off day while the teams pack up and move to New York's Yankee Stadium for the third and fourth games—each the fifth if necessary. The Braves are expected to pitch either Carl Willes or Bob Rush, both left-handers. The Yankees' probable right-hander Don Larsen

is 21-7, the Yank's 20-game winner in four wins, and reliever Duke Madsen the victors of the Braves' first inning record burst.

The seven runs were the most ever by any club in the first inning of any series game, topping the mark of six the Giants would set, Oct. 15, 1912.

Mantle's first homer, a solo shot leading off the fourth inning, Bauer's drive leading off the ninth and Mantle's second homer following Gil McDougald's single in the ninth, were the only displays of the Yankees offensively.

Mantle now has 11 home runs in World Series competition, second only on the all-time list to Babe Ruth's 16.

Bill Dahlen and Wes Covington each contributed three hits to Milwaukee's 15-hit attack. Among seventh-inning singles extended his consecutive game hitting streak to nine. He hit safely in all seven games so far and had one hit—a clutch double—yesterday.

Line Score  
New York 100 100 001-5 7 0  
Milwaukee 710 000 23x-13 15 1  
(Braves lead 2-0)  
Turley, Maas (1), Kucks (1), Dixon (5), Monroe (8) and Berra, Burdette and Crandall, L-Tarlie.  
Home runs—New York, Mantle (3), Bauer, Milwaukee—Bruno, Burdette.



MILWAUKEE (AP)—Braves manager Fred Haney is shown talking to two pitchers, Lew Burdette (23) and Warren Spahn (21). Spahn defeated New York Yankees 4-3 in the World Series opener Wednesday. Burdette pitched the Braves to a 13-5 win.

## In Mich. AAU Harriers Open Season Under New Head Coach

By Darwin Bennett

Coach Francis Dittich will kick off this year's cross country campaign in a manner very similar to Spartan grid mentor Duffy Daugherty—with a show of team strength and depth.

In his first year as head coach, Dittich has enlisted many all-female teams to compete in the Michigan Amateur Athletic Championships at Kalamazoo Saturday.

Preparing for this state-wide event, Dittich—who also will coach a boys' track team—predicts the Spartans will be especially strong as last year's squad, but he had the idea his women have improved. He feared that this would be the deciding factor in any special cross-country races.

With most of the larger colleges in Michigan expected to enter, in addition to several schools from Indiana and Ohio, a large field is anticipated.

Michigan's top cross-country team, the Spartans, will be led by several promising youngsters this season. In an attempt to provide for their own early season work, a crack team will be organized in November.

Last year's team were edged by the Spartans by just a hair, 22-14, but were winners of an honor by the Spartans in a regional match. The Fighting Irish haven't lost any personnel since last year with the exception of their team captain, Ed Mommely, who finished 19th in the field of nearly 200 contestants.

The senior four-mile will be run at 12:30 Saturday. (Coach Dittich mentioned that the team members were in a big hurry to return in time for the football game.)

Lead by Captain Fordy Kennedy, ICAA Champ, and mainstay of the team last year, the squad faces the happy prospect of having difficulty selecting the five best runners who will form the nucleus of the team, because of the depth of talent.

In a full-scale workout Wednesday afternoon on MSU's new 14-hole golf course south of campus, Kennedy strode confidently across the finish line followed by teammate Bob Lake.

The remainder of the field, in the order they finished, were Bill Reynolds, George Tate, Tony Smith, Jack Crowell, Jim Horan, Dave Lewis (last year's track team captain) and Ben Burian, all posted very respectable times.

Of this group, four are juniors and two are sophomores. The two sophomores finished third and fourth.

State News  
**SPORTS**  
Night Sports Editor—Jim Ryppa  
Assistant—D. Peter Walters  
OCTOBER 6, 1958 P.A. Five

## Undefeated Booters Face Indiana Tech

Michigan State's soccer team, undefeated in its two years as a varsity squad, opens its 1958 season at 10 a.m. Saturday against Indiana Tech on the Soccer Field.

Depleted in strength only slightly by graduation and bolstered by an impressive array of newcomers and newly-eligibles, the booters seem to have finally solved Coach Gene Kenney's one old problem—if a coach who goes 14 straight games without a loss has one—depth.

Transfers Pete McKinnon, Horace Hamilton, Bernie Cook and Erich Streder and sophomore John Southan will be the outstanding "rookies" on Saturday starting 11. McKinnon and Hamilton are halfbacks, the

team went varsity in 1956, will be back to supply scoring punch. Sarrja is also a former All-America selection.

Defencemen George Sepsis, Neil Butler and Leo Vander Horst, all veterans on the State soccer scene, will offer experienced support to gentle Noel Ivraga, a converted forward who is, in Kenney's words, "working out excellently at his new position."

Despite the increased manpower his team boasts, Kenney is pulling no punches about the season to come.

"It's going to be a tough one," he says, especially those early games (Indiana Tech, Pittsburgh, Purdue and a greatly improved Illinois squad).

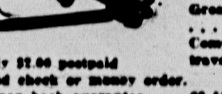
"If everything falls properly with the new men in the lineup, we should have a good season, though," he admits.

Only Spartan injuries going into the opener are Art Southan and Streder, both nursing leg injuries.

They are filling vacancies in the graduated halfback Ray Burdett and goalie Sosambe and by All-America halfback Angelo Piliola, currently restricting his competition to the classrooms.

In addition, some of last year's starters have been forced down to the second team in a keen fight for first string berths.

Forwards Al Sarrja and Art Southan, who have scored 38 of the booters' 43 goals since the

For Quick Coffee "Pick-Up"  Imported IMMERSION HEATER

Keeps a cup of water in minutes. Great for traveling, picnics, camping... anywhere. Heat resistant handle. Complete with insulated cord and travel case.

Only \$2.00 postpaid. Send check or money order. Money back guarantee.

HENRY HAMMER  
68-11 Burns St. Forest Hills 75, N.Y.

**DANGER!** LARGEST DISCOUNTS IN TOWN!  
LIVES ARE AT STAKE WHEN YOU GAMBLE WITH A LEAKY MUFFLER!  
Largest Stock in Central Michigan!

**MUFFLERS**  
GUARANTEED For the Life of Your Car WHILE-YOU-WAIT INSTALLATION

— ALSO — COMPLETE DUAL EXHAUST SYSTEMS FOR CHEVROLETS AND ALL OTHER MAKE CARS — Wholesale & Retail —

**KRAMER**  
AUTO PARTS  
MEMBER A. M. A.  
400 E. KALAMAZOO PH. IV 7-7005

NATURAL SHOULDER SPORTCOATS of Distinction \$45.00

... for the man who cares to wear the very best!

**Ray Kettler**  
EST. 1920  
EAST GRAND RIVER ON THE CAMPUS


WILLIAMS HARTS  
Dr. Joseph B. Gutstein  
OPTOMETRIST  
Democratic Candidate for CORONER  
918 PRUDDEN BLDG.  
PHONE IV 2-4221  
If You Are Interested in Helping The Democratic Party Fill in Coupon and Mail to Dr. Gutstein, 918 Prudden Bldg.  
Name \_\_\_\_\_ Phone \_\_\_\_\_  
Address \_\_\_\_\_ City \_\_\_\_\_  
POLITICAL ADVERTISEMENT

Last 5 Days **LUCON**  Late Show Tonight at 9:50 P.M.  
THE FRANKEST... FRENCHIEST FUNNIEST BARDOT EVER!  
Features: 1:00, 3:30, 6:00, 8:10, 10:30  
Added: Major Cartoon Novelty & News  
PLEASE NOTE: "La Parisienne" not shown Sat. Matinee until 3:45 p.m.  
SPECIAL Riddle Cartoon Show Sat. Matinee at 1:00 P.M. 6 Cartoons plus Western!

STARTS WEDNESDAY  
 REX HARRISON - KAY MERRILL

the shapely calf...  
Is the shoe to put you in good standing with all the latest...  
Black kid Black suede and kid comb. \$12.95  
**Jacqueline** as seen in Vogue  
Red calf Black calf Black suede \$14.95  
Watch for the Keds Girl Friday. Check the number in the sample she gives you. Win a free pair of Keds. Check your number in the East Lansing Style Shop window.  
*The Style Shop*

JENISON  
T  
O  
N  
I  
G  
H  
T  
FOUR FRESHMEN

WE TRIM THE TOPS  
  
UNION BARBER SHOP  
UNION BLDG.  
OPEN 8-5:30  
CLOSED SAT. 12 NOON  
8 BARBERS

**DRY CLEANING SPECIAL**  
PLAIN SKIRTS & TROUSERS  
3.80c EACH .49 EACH **NOW**  
LIMITED TIME ONLY CASH & CARRY  
**COLLEGE CLEANERS**  
620 W. MICH. E.L. ED 2-4713

Come And Get 'Em!  
**WHOPPER-BURGERS**  
The biggest, tastiest hamburgers on earth.  
DOUBLE MEAT IN EVERY "WHOPPER"  
Bring this ad with you and get a 10c DRINK FREE  
**WHOPPER SHOP DRIVE-IN**  
2512 E. Michigan Ave., Lansing  
PLENTY of FREE PARKING

## Here We Go Again

By TONI ROBB  
State News Society Editor

Hello again everybody. Hope you had a good summer and are all set for another big year at MSU. Or for the nasty schedule. As you know, a new school year brings not only new classes and activities, but also a whole new group of parties and dances. And engagements. And pinning.

And since we all want to hear about these exciting events, the only way to satisfy our natural curiosity is to tell everybody your news via the press.

The first and most important thing to remember is the deadline. Since the society page appears every Friday—barring Martian invasions, etc.—deadline for copy is every Wednesday afternoon.

Social and publicity chairmen of organizations and living units can most successfully meet deadlines by bringing material to the STATE NEWS office on the third floor of the Student Services building. An arrangement of boxes can be found in the Society section designating social events, ballot box, religious news, etc.

Another thing I'd like to stress very strongly is to purchase type everything submitted to the page—you may have gotten A-plus in the Palmer Method but some of the staff just might need glasses. If we can't decipher your writing, misspellings are the inevitable result and could be surprised how much that extra S or L in his name can mean to a person.

For birth announcements, information should include parents' names, baby's name, weight and date of birth. Pinning (terribly sorry, no de-pinners) engagements and ballot box items should include the person's name, class and hometown.

## Game Kicks Off Social Frolic

Lambda Chi Alpha will entertain and celebrate immediately after the game with a buffet. Sigma Alpha Epsilon has slated an informal dance Saturday evening at 8:30. Immediately following the game a combo will play at the SAE house. Delta Chi's and their dates will celebrate with a dance at a chapter house from 9-12 Saturday evening.

Zeta Tau Alpha will mark the opening of their new recreation room with a record dance for Zeta's from U of M and their dates. Evans Scholars will host their Michigan chapter members tomorrow. Festivities begin with an inter-chapter football game at 10 a.m. Following the game there will be an all-university open house.

Open houses and informal coffee hours are slated by Alpha Chi Sigma, Alpha Chi Omega, Alpha Omicron Pi, Alpha Delta Pi, Alpha Xi Delta and Theta Chi. Delta Theta Pi and Phi Kappa Phi get the weekend rolling tonight with the "Bogue Street Dance" after the Pep Rally.

Air Conditioned for your Comfort —  
Five Barbers for your Convenience —  
Shoe Shine  
208 MAC  
A LEVEL BYRNES E.  
**HARRISON BARBER SHOP?**

**WHAT'S MY LINE? —MUSIC—**  
**BOB CROWNER**  
COMBO AND BAND  
3580 W. Howe DeWitt, Mich. DeWitt 3587  
(COME IN AND SIGN IN, PLEASE)

**B'NAI B'RITH**  
Hillel Foundation  
Sunday, October 5, 5:30 P.M.  
Supper Club at the Hillel House  
Kosher Buffet — Prof. Harold Rudman will speak and show slides on his recent Russian visit. Everyone Welcome.

**Good Luck Team!**

**LOUIS LAUNDRY and CLEANERS**  
exclusive  
Cravanette  
water repellent  
across from student services

**MARTIN LUTHER CHAPEL**  
(Missouri Synod)  
411 Abbott Road  
Chapel ED 2-0718

**SUNDAY SCHEDULE**  
Morning Worship 9:30 and 11 a.m.  
9:30 Bible Study  
Cool Supper,  
Gamma Delta Program 8 p.m.  
Vespers 8:15 p.m.

Interim Pastor, Rev. Donald Orther  
2664 Dean Ave.  
Rolt, Michigan  
Parsonage No. OX 9-1366

**UNIVERSITY LUTHERAN CHURCH AND STUDENT CENTER**  
Division at Ann Street  
(Two blocks North of Berkeley Hall)  
Church ED 2-5571  
Parsonage ED 2-2725

**SUNDAY SCHEDULE**  
Services: 9:00, 10:15, 11:30 a.m.  
University Fireside: 10:15 a.m.  
Nursery: 9:00, 10:15 a.m.  
Supper: 5:30 p.m.  
Speaker: Dr. Stanley Idrota,  
"Our Calling as Scholars"

**WEDNESDAY**  
Union Breakfast  
**THURSDAY**  
Graduate Lunch 12:10 p.m.

**PEOPLES CHURCH EAST LANSING**  
Interdenominational  
700 West Grand River at Michigan  
REV. C. BRANDT TEFIT, Pastor

**MORNING WORSHIP**  
9:30 and 11:00 a.m.  
Communion and Reception of Members  
Meditations by Rev. C. Brandt Tefit

Church School  
9:30 A.M. 11:00 A.M.  
Crib room through high school age

**CHRISTIAN STUDENT FOUNDATION**  
114 W. Grand River

9:00 A.M. — Breakfast Forum  
11:00 A.M. — Worship at Peoples Church — World Wide Communion

1:00 P.M. — Campus Vespers at College House  
Topic: "Life and Task of the Church"

Everyone Welcome

**FIRST CHURCH OF CHRIST SCIENTIST**  
Branch of The Mother Church  
The First Church of Christ Scientist, Boston, Mass.  
709 E. Grand River

**SUNDAY SCHOOL**  
10 University Student  
11:00—all others  
"UNREALITY"  
Reading Room  
131 W. Grand River  
Mon., Tues., Thurs.  
9 a.m. — 3 p.m. and 7 p.m. — 9 p.m.  
Wed., Friday  
9 a.m. — 3 p.m.  
Saturdays, 9 a.m. — 1 p.m.  
Sunday, 1 p.m. — 3 p.m.

All are welcome to attend church services, and visit and use the Reading Room.

**ST. JOHN CHURCH & CATHOLIC STUDENT CENTER**  
Fr. R. Kavanagh Fr. F. Zippie  
327 M.A.C. Avenue

**Sunday Masses**  
7:30 — 8:45 — 10:00 — 11:30  
(Baby sitting at 8:45 & 10:00 Masses)

**Daily Masses 6:45 & 8:00 A.M.**  
Confessions Daily 8:00 A.M. & 5:30 P.M. (After Rosary)  
Saturday 6:30 & 7:30-9:00 P.M.

**CATHOLIC STUDENT ORGANIZATION MEETS SUNDAY**  
7:00 P.M.  
Phone ED 2-9278

**METHODIST CHURCH OF EAST LANSING**  
Wilson M. Tennant, Minister

**Sunday Services**  
9:30 a.m. — Worship  
10:30 Church School  
Red Cedar School

Block West of S. Harrison Rd.  
On Bever Dr.

11:00 Worship Service  
State Theatre  
Abbott Bld.

Nursery Available

**EDGEWOOD PEOPLES CHURCH**  
Interdenominational  
167 N. Hagadorn Road  
(3 blocks north of Grand River)  
Rev. Truman A. Morrison, Minister  
Rev. Robinson G. Lapp, M.

9:30 a.m. & 11:00 a.m.

Sermon by  
Rev. Truman Morrison

Church School at 9:30 and 11 a.m.  
Crib room through Junior High  
High Class — 11:00

**EASTMINSTER PRESBYTERIAN CHURCH**  
Services at East Lansing  
200 E. High School  
819 Abbott Road

9:30 A.M. extended church school  
1:00 P.M. church school  
All are welcome to enroll in one of these schools.

1. Christianity in the modern world  
2. Christian discipline  
3. Service of the Church  
4. Our Testament  
5. New member class

10:30 World Wide Communion

**EAST LANSING TRINITY CHURCH**  
120 Spartan Avenue  
A Holy Trinity Ministry in the Center of East Lansing  
Rev. F. EUGENE WILSON, Pastor

**SUNDAY SERVICES**  
11:00 a.m.

**CONFIRMATION & BAPTISM**  
11:00 a.m.

**WEDNESDAY BIBLE CLASS**  
9:45 a.m. Sunday School with class for University students  
9:30 p.m. UNIVERSITY COLLEGIATE BIBLE STUDY  
All University Students Welcome  
1:00 p.m. Prayer and Bible Study each Wed. Night

**SEE YOU THERE!**

**BETA - PHI TAU SHUFFLE**  
ALL-UNIVERSITY STREET DANCE  
FRIDAY, OCT. 3, 9:00 - 12:00  
FOLLOWING MICHIGAN PEP RALLY  
ON BOGUE STREET NEAR RIVER FRONT  
Dance to the music of the PAUL HOLLINGER QUARTET and BOB KNAPPE  
Refreshments will be served  
No Admission Charge  
In case of rain, dance will be held in the auditorium

**ALL SAINTS EPISCOPAL CHURCH**  
University Episcopal Center  
800 Abbott Road — ED 2-1313  
Rev. Gordon M. Jones — Rector  
Rev. John F. Porter — Chaplain

**SUNDAY SERVICES**  
10:00 A.M. Holy Communion  
9:30 A.M. Family Service and Church School  
11:00 A.M. Morning Prayer

**CALENDAR YEAR**  
6:30 P.M. Sunday

**SUNDAY BUS SCHEDULE**  
Departures from Campus  
10:00 A.M. Gilchrist Hall Parking Lot  
10:45 A.M. Butterfield Lot  
10:30 A.M. Shaw Hall Parking Lot  
10:35 A.M. Mason Hall Parking Lot  
Returns to Same Points After Church

**SOUTH BAPTIST CHURCH**  
South Washington at Michigan  
Howard F. Sogden, D.D. — Pastor  
Diamond J. Bell — Minister

A.M. Bible School Hour College Class Taught by Dr. David W. ... Dept., MSU

11:00 A.M. "APPOINTMENTS WE CANNOT MISS"  
1:00 P.M. "GOD SAYS — LOOK OUT!"  
6:30 P.M. Adult Youth Fellowship  
Subject: "IS GOD KNOWING?"

Free bus service leaving Shaw and Farm Lane 7:30 A.M. and 8:30 P.M.  
Bus to campus. For further information call ED 2-2282

**FIRST WESLEYAN METHODIST CHURCH**  
North Michigan at E. Michigan  
Rev. George B. Hill, Pastor

Worship Services: 9:30 A.M., 11:00 A.M., 7:00 P.M.  
Evening Service: 7:00 P.M.

The End of Your Search for a Friendly Church

**OLIVET BAPTIST CHURCH**  
7215 E. Michigan  
Rev. William Hartman, Pastor

**SUNDAY**  
Sunday School 9:15 A.M.  
Morning Worship 9:30 A.M. & 11:00 A.M.  
Youth Groups 7:00 P.M.  
Evening Service 7:00 P.M.  
MID-WINTER SERVICE Thursday 7:00 P.M.  
Transportation leaving International House 9:30 a.m. Sunday; call IV 2-9182 for a ride (Closest Baptist Church to Campus)

**FIRST CHRISTIAN CHURCH**  
(Disciples of Christ)  
Holmes and Eureka Streets  
1 block south of Sparrow Hospital

Church No. 1  
9:45 a.m. Morning Worship 10:30 a.m.  
Ch. R. 1:00 p.m. S.V.P. 4:00 p.m.  
(1024-12-14) 187 Holmes & Eureka Streets  
Call ED 2-2861

**INTER-CITY BIBLE CHURCH**  
7817 E. MICHIGAN  
Independent, Fundamental, Pre-Millennial  
REV. G. J. TUNSTRA, PASTOR

8:30 a.m. Sunday Bible School  
11:00 a.m. Morning Worship  
6:00 p.m. Youth Groups  
1:00 p.m. Evening Inspirational Ser.  
(Nursery Re-organized for Better Service)  
For Transportation call IV 9-1161

**FIRST PRESBYTERIAN CHURCH**  
Division at Chestnut  
(1007 Ross Line)  
Rev. William G. Robinson, Minister  
Edw. S. Powell, Pastor  
New Harbor, Minister of Christian Education

Two Worship Services  
Mr. Auburn preaching at both services  
6:00 Sunday evening Calvary Club for single young adults

**CENTRAL METHODIST CHURCH**  
Ottawa at Capitol  
Worship services at 9:45 and 11:30  
Dr. Morrison, Preaching  
Sunday School at 9:45

**SCORE Values!**  
While MSU BEATS U-M

Stay Warm With A **VARSITY BLANKET** in plastic carrying case with a handle! **Only \$6.95**

Be Comfortable on a **FOAM RUBBER MSU SEAT CUSHION** Just \$1.00

1958 Quarterbacks Yearbook **Reg. 2.95 NOW 1.95**  
Complete Big Ten Statistics

**TWO DOORS ROOM TO ROAM TWO FLOORS**

**The Campus Book Store**  
131-133 East Grand River Avenue  
East Lansing, Michigan  
phone ED-4413

**FIRST CHRISTIAN REFORMED CHURCH**  
700 Marshall St.  
Rev. John M. Hofman, Pastor

Morning Service 10 A.M.  
Evening Service 7 P.M.

Those who desire transportation to church call Mr. Holt (IV 6-1665) or Mr. Macmillan (IV 2-3865)

**LANSING CENTRAL FREE METHODIST CHURCH**  
Washington at Jefferson

Morning Worship — 11 a.m.  
Youth Service — 7:30 p.m.  
Evening Worship — 7:30 p.m.  
Prayer Meeting Wed. Evening-7:30  
"The Church"

**UNIVERSALIST UNTARIAN CHURCH**  
6 Holmes at Prospect  
(2 blocks South of Sparrow Hosp.)

Sunday Service 11:00 A.M.  
Church School and Nursery  
Adult Fellowship 2nd Sun. 1:30 p.m.  
On Campus  
Fellowship of Religious Liberals  
Sun. 7 p.m. — Doors 7:00 — 10:00

**OKEMOS BAPTIST CHURCH**  
NEAR THE CAMPUS  
Rev. Howard Johnson, Pastor  
Invites You

Sunday School 10:00 a.m.  
Church 11:00 a.m.  
Vespers 6:20 p.m.  
Sunday Night Service 7:30 p.m.

Enjoy  
Friendliness, good music, church family

Please call ED 2-6283 for a ride

**Visit the University Chapel**