

# ... Keep Bleeding Spartans — We've Hit 1,246 Pints ...

## Michigan State News

EAST LANSING, MICHIGAN—FRIDAY, FEBRUARY 14, 1957

PRICE 5 CENTS

### CAGERS ON TV

The cagers face Illinois Saturday afternoon at 4:30 before a national audience in Jensen Field House with the hopes of strengthening their position in the hectic Big 10 race.

VOL. 49, No. 137



When we asked pretty Judy Brown, Beaverton freshman, to be State News Valentine Girl, we didn't know she might bring her Cupid's bow and arrow. So whether we wanted it or not she com-

pletely captured our hearts with an arrow shot through the middle. Are you jealous? Sorry, she's our Valentine.

### Williams One of Eleven

## 6 Point Economic Solution Given Ike by Dem Governors

AUGUSTA, Maine (AP)—Eleven Democratic governors told President Eisenhower Thursday they could prevent the recession from feeding on itself and deepening further into a depression.

They urged a six-point program including public works, better and educational expansion, further easing of credit, possibly a tax cut, indirect relief for the unemployed, and a "full employment" program.

They invited other governors to join them and said they were sending their suggestions to the president.

Gov. Edmund S. Muskie of Maine, one of 11, said it is "essential that prompt and alert attention be given to present conditions."

Unemployment in Maine, as reflected by claims for state compensation, is almost double that of 1957, Muskie said. It is

### Test Alert Siren Trial Scheduled

First tests for a new siren are scheduled Thursday. The siren will be used to warn of tornadoes or enemy attack.

An alert siren will be tested at 12:45 p.m. and the "take cover" signal at 1 p.m., according to the public safety department. The "alert" signal will be a steady tone and the "take cover" signal a varying tone. Both will last for three minutes and vary in volume as the siren mechanism rotates.

Norman Steere, assistant director of safety services, said the warning siren will be heard throughout the campus in most of East Lansing and in the eastern portion of Lansing. The siren also will be heard in other parts of Lansing and Meridian townships and possibly in Okemos, he said.

The siren is located on the East Lansing fire station, on campus and is controlled from headquarters of the public safety department.

The plan at present is to test the warning siren each week for several months and then to test the siren once each month.

Steere said "The public tests have two purposes: to condition the university and East Lansing public to hear the signals and to evaluate coverage of the siren under different weather conditions."

Steere said the siren has a tone "readily distinguishable from other sounds such as vehicle sirens, horns and whistles."

their state representatives in Congress.

The telegram made these six specific suggestions:

1. Government action to expand construction in projects which can be started quickly.
2. Larger programs of welfare, education and health.
3. Realistic federal minimum standards in unemployment insurance, one of the greatest weapons we have to maintain purchasing power.
4. Easier credit. The telegram said "The tight money policy of unchecked expansion, created unemployment, while failing to hold inflation. The adjustments which have been made thus far are inadequate."

5. A return to "realistic" farm support programs until a "comprehensive and workable program" is developed. Greater use of the present surplus also was urged.

6. "If the recession is not arrested by other national policies and programs, a federal tax cut may be necessary to stimulate economic activity. In order to provide the maximum stimulus to purchasing power, and such tax relief should be directed to low income families."

### Proceeds to Go Toward Lansing Dragway

## Originality, Safety Key '58 Autorama

By PETE WALTERS

Originality and safety will be the keywords of Autorama '58, which will run through Sunday at the Lansing Civic Center.

The building of a drag strip a year ago. With this, their second Autorama, as their big money-making project, they hope to have a strip in operation by summer.

The development of the drag race, or 1/4-mile, straightaway acceleration contest, has been evidenced by the consistently large turnout of Lansing and MSU racing fans at the Central Michigan Dragway, some 75 miles distant, and by the many local auto clubs.

Last year three organizations, the National Hot Rod Assn., American Hot Rod Assn. and Automobile Tuning Assn. of America, staged national meets.

The Lansing strip, when built, would operate on weekends as long as weather permitted, with entry fees going toward improvements on the race-course, seating, buildings and equipment.

Hours for Autorama are 6-11 p.m. today, 11 a.m.-11 p.m. Saturday and 1-11 p.m. Sunday.

## Tunisia Ready to Fight for Port

### French Must Abandon Naval Base of Bizerte

Country May Let NATO Powers Continue Use of Port Facilities

TUNIS (AP)—President Habib Bourguiba declared Thursday "we are ready to make war for Bizerte." But he held open the door to mediation by the United States of Tunisia's quarrel with France.

### WKAR-TV To Present Race Play

"Good and Black" Student Project

"Good and Black" is a tragedy with contemporary overtones, is scheduled for 12 noon this Sunday on WKAR-TV. This is the second of three dramatic productions by the student project.

The play is written by the student project, and the cast includes: David Brown, Jr., as the lead; John Brown, Jr., as the second lead; and John Brown, Jr., as the third lead.

"Good and Black" is a tragedy based on racial prejudice in the South during the final days of the Civil War. The action takes place in a Confederate stockade in North Carolina.

Naturalistic dialogue brings out the deep emotion and characterization between a colored Union soldier and a white rebel deserter. The script was written by James Hourigan, graduate of MSU.

The impressionistic staging, prepared with the naturalism of the dialogue, creates a mood that evokes the development of the conflicts between the characters.

1. Robert Johnson is the dramatic director. The program will be produced by Kay Klotzburger and directed by Lee O'Brien. All are students of the Speech Dept.

Those who are unable to receive WKAR-TV on their television sets may view this production at the set in the lower lounge of West Shaw Hall or the Conference Room or lobby at the station.

### Basketball 'Package' Still on Sale in Union

There are still some tickets left for the Michigan basketball game, Sonny Keller, Sports Editor, said Thursday.

Tickets are on sale at the Union ticket office for \$3.50 which includes round trip bus transportation as well as the game ticket. The bus will leave the Union Monday at 5:30 p.m. and return immediately after the game. Seats must be taken late but if the bus is delayed, late minutes will be excused.

The President also suggested in a broadcast to his nation that, while he is determined 15,000 French troops stationed in Tunisia must go, the French naval base at Bizerte might still be used by the North Atlantic Treaty Powers.

That base and French army barracks are blockaded. Jittery Tunisian civilians and National Guardsmen, patrolling with light arms, manned road-blocks to prevent the movement of French troops. They threatened to fire on any French ship attempting to enter or leave Bizerte.

Tunisia put a call at 6 p.m. to French and British, called 84 wounded and 10 not accounted for.

The French said the raid was to punish Algerian rebels who had fired on French planes from their border hideouts in Tunisia. But several diplomats, including U.S. Ambassador G. Lewis Jones, are reported to have confirmed that there were heavy civilian casualties.

Using international reaction to the bombing as a springboard, Bourguiba has been trying once again to force withdrawal of French troops who remained in the country when France recognized Tunisian independence nearly two years ago.

### Memorial Symphony For Hart

The Lansing Civic Symphony will dedicate its Sunday concert to the memory of Weston Hart, late head of the music department, who died Nov. 20, 1957, after having conducted the Symphony No. 1 at the concert.

The program scheduled at 4 p.m. in Sexton Auditorium will be conducted by James Tava, music professor. Assisting artist is Raymond J. Conner, No. 2, is Henry Hart, associate music professor.

In 1945 Hart won first prize for symphonic composition offered by the American Broadcasting Company through the National Composers Congress. The prize-winning composition, now the first movement of his "Symphony No. 1" for which he was awarded \$500.

The following year the first movement was performed by the ABC Symphony Orchestra.

Hart received his doctorate in 1946 from the Eastman School of Music and completed his symphony which was performed during the spring Festival of American Music, Howard Hanson conducting.

Sunday's program will also include Brahms' "Tragic Overture," Op. 81.



A chorus of "Old Men" in term play, "Lysistrata," try unsuccessfully to storm the female-held treasury building with a battering ram. But the Greek ladies hold off oldsters with merry prattle and cold water. The farce comedy plays again tonight and Saturday at 8:15 p.m. in Fairchild Theater.

### 'Abstain From Love,' Cried Lysistrata

## Term Play Opening Curtain Adequate, Not Professional

By DAVID STROUD  
State News Managing Editor

"Abstain from love," cried Lysistrata, and the lovely Greek women complied, though not at all times, willingly, nor always with artistic finesse, for that matter.

Mary Martin, in the title role, faced no mean task in holding together plot and cast at the term play which its way through the comedy world.

Miss Martin, as Lysistrata, plays the mother hen trying to keep her featherbrained chick from succumbing to love and husbands in a fight to end war between Greek states.

Her success in so doing can only be judged in a week-group glance at the setup.

Greek plays are difficult enough for professionals to render well and the MSU Players are amateurs. In that light they did an adequate job of bringing Greek comedy down to the audience.

In the supporting cast were mostly dim stars but a few shone brightly in coming to Miss Martin's aid to preserve a play the audience received with grace and four curtain calls.

Margie Tappen as the pert, hairbrained strumpet, "Kallikles," glittered brightly until she burned out in the final dance scene. A superior amateur, she isn't a dancer.

Myrtilla, Carol Smith, Ad-

mitted about the stage with a flightiness befitting her role as frustrated wife and warrior.

An excellently portrayed romantic and staid Greek woman, the Athenian senate member, who was the wife of the person of Jerry Colucci. One scene was a piece that fit the puzzle as though he knew every moment where he belonged.

Donald Baughardner led his chorus of "Old Men" with a relieving bit of comic action for the most part well done though occasionally overplayed. A complementary chorus of "Old Women" dragged through the first scene not well done, but overcooked.

However, they dropped their voices and seemed rejuvenated with the truth they were might have entertained as the play continued.

The comedy's final scenes of comedy because people had been deceived and men and women reunited made one with the religious had been seven hours instead of nine. A dance scene that even amateurs do not excuse didn't seem to move the audience.

But opening nights are notoriously not the best in a stage run. "Lysistrata" tonight and Saturday will be improved and theatergoers need not be excited off by this first performance. It was adequate and ought to get better.

Many of the cast have distinguished themselves in earlier

productions. Director John Walker should have them whipped into shape for the next two nights.

Stage lighting seemed far too bright, offering no relief for the audience. With few exceptions, the production was a strenuous effort.

Simple and severe stage settings were superior. Hats off to those who labored hours with construction that exemplified that landscape 25 centuries ago.

Tickets at one dollar each, all sold at the Fairchild Theater box office for 8:15 p.m. curtain time.

### Blood Drive Sets Record In Day's Total

A one-day winter term blood drive record of 441 pints were donated Thursday, bringing the four-day total to 1,246 with another day remaining.

Delta Upsilon joined Kappa Kappa Gamma in the 100 percent plan, with Alpha Sigma Phi and Phi Kappa Tau close behind with 96 percent.

Van Hoesen dormitory broke an all-time record for a blood drive by reaching 84 percent and Butterfield 80 percent.

According to Phil Wahl, T-100, Ohio, senior, and Richard Renner, New York, N.Y., senior, publicity chairman, 119 students have been rejected in the four-day period due to health reasons.

The hours today will be from 10 a.m.-5 p.m., working up the 1956 winter term blood drive.

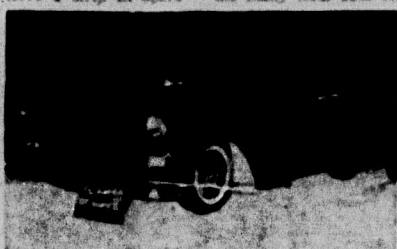
For totals through Thursday see Organizations, page 8.

Religious Discussion Scheduled Sunday

"Comparative Ideas of Religion" will be the topic for discussion in 11 Union Sunday evening at the Union Board sponsored panel with Dr. Donahue as moderator. Dr. Melvin Moore, Mr. Yaron Masai and Miss John Mahle will compose the panel which will speak on Buddhism and Mohammedanism, respectively.

### Deadline Announced For Events Calendar

According to Tom Gates, public relations chairman, the deadline for listing events for the Spring Union Board calendar is Feb. 23 in the UB office.



RESTORED PICKUP ... old meets new at '58 Autorama ...



Onas Erens, vice president of the German Turner Band which performed in Jensen Thursday night, accepts a trophy from Gymnastics Coach George Szepala. The Turner Band is a social and sports club with a million members. It was banned in 1936 by Hitler because it was "too democratic" and was recently recommissioned.



The Michigan State News is published by students of Michigan State University, East Lansing, Mich., without direct faculty supervision. It is not the official voice of the university or of the student body, but while seeking to serve the best interests of both, it is not bound by either. It is published by the Michigan State News Association, Inc., 1000 E. Lansing, Mich. 48824. Member of the Associated Press, Inland Daily Press, Intercollegiate Press Association and Associated College Press.

Vol. 49, No. 137 Friday, February 14, 1958 Page Two

## Editorials

# Teaching Practices Undergo Scrutiny

Raise the standards! That's the cry. Tighten up the requirements. That's how to improve the college graduate. Just lower the curve and make bigger assignments. Simple process.

There are some elements about it that look a bit one-sided, however. The teacher simply changes his grading system a bit and goes back to Kewpees for another cup of coffee and more dirty jokes. The student just adds a couple lines to his cheat sheet. Simple process.

The student deserves criticism. His interest lies mostly with Playboy and grill pick-ups. But this is not an accident. Part of the responsibility for student apathy belongs to the faculty. If only five percent of the total body are real "students" as many teachers claim (and they're probably right) then we will claim (and we're probably right) that only five percent of the faculty are real "teachers."

We have a large faculty and a large student body. A great many stuffed shirts and fulfilled Ph.D.'s can get lost in the faculty merely because of the numbers involved. We have a similar proportion of students who would not know an education if they lived with it all their lives.

We have students who never go into an instructor's office unless ordered to. We also have instructors who are never in their offices.

The point we are trying to make is this: To up-grade the level of college students, it seems to follow that we must also up-grade the instructors. Not a simple process by any means.

We would like to throw up to the faculty that well-worn off-beat story about taxpayers. We are taxpayers. You, Sir Teacher, are working for us, and if you would show a little more indication that you are vaguely aware of this fact the result might be more interested students.

This is a criticism of those few instructors who feel that the coffee break is more important than the student, that the research project is more important than the student, that "the book I'm writing" is more important than the student, etc., etc., etc.

It would seem to us that the philosophy of any teacher should place the injection of curiosity into a young man or woman first, not second to their latest, greatest American tradition of four coffee breaks per day.

This may be an idealistic and unrealistic theory, but that is one of the unfortunate things about being young and a college student.

## MSU Vies for Hoop Lead

Michigan State's basketball team and Indiana are currently heading the pack in the tightest Big 10 race in history. By winning Saturday over Illinois, State would shrug off Indiana, which is idle, and take over sole possession of first place. It will also mark State's first appearance on regional TV in Jenison Fieldhouse this year.

Coach Fordy Anderson has continually said the fans make or break a team and the fans have given tremendous support to basketball. On three occasions the throng has eclipsed the 12,000 mark. Another appropriate turnout would be a big psychological boost in State's drive for a conference title.

## Uncontrollable Wife

It's foolish to worry about anything beyond your control—such as your wife.

## Better Off Dead

Anybody who is mistaken for a moose and is shot is better off dead anyway.

## Crossword Puzzle

**ACROSS**  
1. Anxiety  
5. Helical  
11. Small house  
12. Cure all  
14. Opposite  
15. Title of  
16. Heroine of  
17. Groove  
18. Of the  
20. Unexploded  
21. Mystic  
22. Opponent  
23. Back of  
24. Radium  
25. Threaten  
27. Black  
29. Roman  
30. Explet  
33. Nerve  
35. Soprano  
36. Dad  
38. Quite a lot  
40. Exult  
41. Make a  
43. Demon  
44. Part of the  
45. Send out  
47. Among  
48. Approach  
49. Brought to  
51. Remain  
52. Determine  
53. Intimidated  
54. Part of the  
55. Send out  
57. Among  
58. Approach  
59. Brought to  
61. Remain  
62. Determine  
63. Intimidated  
64. Part of the  
65. Send out  
67. Among  
68. Approach  
69. Brought to  
71. Remain  
72. Determine  
73. Intimidated  
74. Part of the  
75. Send out  
77. Among  
78. Approach  
79. Brought to  
81. Remain  
82. Determine  
83. Intimidated  
84. Part of the  
85. Send out  
87. Among  
88. Approach  
89. Brought to  
91. Remain  
92. Determine  
93. Intimidated  
94. Part of the  
95. Send out  
97. Among  
98. Approach  
99. Brought to  
101. Remain  
102. Determine  
103. Intimidated  
104. Part of the  
105. Send out  
107. Among  
108. Approach  
109. Brought to  
111. Remain  
112. Determine  
113. Intimidated  
114. Part of the  
115. Send out  
117. Among  
118. Approach  
119. Brought to  
121. Remain  
122. Determine  
123. Intimidated  
124. Part of the  
125. Send out  
127. Among  
128. Approach  
129. Brought to  
131. Remain  
132. Determine  
133. Intimidated  
134. Part of the  
135. Send out  
137. Among  
138. Approach  
139. Brought to  
141. Remain  
142. Determine  
143. Intimidated  
144. Part of the  
145. Send out  
147. Among  
148. Approach  
149. Brought to  
151. Remain  
152. Determine  
153. Intimidated  
154. Part of the  
155. Send out  
157. Among  
158. Approach  
159. Brought to  
161. Remain  
162. Determine  
163. Intimidated  
164. Part of the  
165. Send out  
167. Among  
168. Approach  
169. Brought to  
171. Remain  
172. Determine  
173. Intimidated  
174. Part of the  
175. Send out  
177. Among  
178. Approach  
179. Brought to  
181. Remain  
182. Determine  
183. Intimidated  
184. Part of the  
185. Send out  
187. Among  
188. Approach  
189. Brought to  
191. Remain  
192. Determine  
193. Intimidated  
194. Part of the  
195. Send out  
197. Among  
198. Approach  
199. Brought to  
201. Remain  
202. Determine  
203. Intimidated  
204. Part of the  
205. Send out  
207. Among  
208. Approach  
209. Brought to  
211. Remain  
212. Determine  
213. Intimidated  
214. Part of the  
215. Send out  
217. Among  
218. Approach  
219. Brought to  
221. Remain  
222. Determine  
223. Intimidated  
224. Part of the  
225. Send out  
227. Among  
228. Approach  
229. Brought to  
231. Remain  
232. Determine  
233. Intimidated  
234. Part of the  
235. Send out  
237. Among  
238. Approach  
239. Brought to  
241. Remain  
242. Determine  
243. Intimidated  
244. Part of the  
245. Send out  
247. Among  
248. Approach  
249. Brought to  
251. Remain  
252. Determine  
253. Intimidated  
254. Part of the  
255. Send out  
257. Among  
258. Approach  
259. Brought to  
261. Remain  
262. Determine  
263. Intimidated  
264. Part of the  
265. Send out  
267. Among  
268. Approach  
269. Brought to  
271. Remain  
272. Determine  
273. Intimidated  
274. Part of the  
275. Send out  
277. Among  
278. Approach  
279. Brought to  
281. Remain  
282. Determine  
283. Intimidated  
284. Part of the  
285. Send out  
287. Among  
288. Approach  
289. Brought to  
291. Remain  
292. Determine  
293. Intimidated  
294. Part of the  
295. Send out  
297. Among  
298. Approach  
299. Brought to  
301. Remain  
302. Determine  
303. Intimidated  
304. Part of the  
305. Send out  
307. Among  
308. Approach  
309. Brought to  
311. Remain  
312. Determine  
313. Intimidated  
314. Part of the  
315. Send out  
317. Among  
318. Approach  
319. Brought to  
321. Remain  
322. Determine  
323. Intimidated  
324. Part of the  
325. Send out  
327. Among  
328. Approach  
329. Brought to  
331. Remain  
332. Determine  
333. Intimidated  
334. Part of the  
335. Send out  
337. Among  
338. Approach  
339. Brought to  
341. Remain  
342. Determine  
343. Intimidated  
344. Part of the  
345. Send out  
347. Among  
348. Approach  
349. Brought to  
351. Remain  
352. Determine  
353. Intimidated  
354. Part of the  
355. Send out  
357. Among  
358. Approach  
359. Brought to  
361. Remain  
362. Determine  
363. Intimidated  
364. Part of the  
365. Send out  
367. Among  
368. Approach  
369. Brought to  
371. Remain  
372. Determine  
373. Intimidated  
374. Part of the  
375. Send out  
377. Among  
378. Approach  
379. Brought to  
381. Remain  
382. Determine  
383. Intimidated  
384. Part of the  
385. Send out  
387. Among  
388. Approach  
389. Brought to  
391. Remain  
392. Determine  
393. Intimidated  
394. Part of the  
395. Send out  
397. Among  
398. Approach  
399. Brought to  
401. Remain  
402. Determine  
403. Intimidated  
404. Part of the  
405. Send out  
407. Among  
408. Approach  
409. Brought to  
411. Remain  
412. Determine  
413. Intimidated  
414. Part of the  
415. Send out  
417. Among  
418. Approach  
419. Brought to  
421. Remain  
422. Determine  
423. Intimidated  
424. Part of the  
425. Send out  
427. Among  
428. Approach  
429. Brought to  
431. Remain  
432. Determine  
433. Intimidated  
434. Part of the  
435. Send out  
437. Among  
438. Approach  
439. Brought to  
441. Remain  
442. Determine  
443. Intimidated  
444. Part of the  
445. Send out  
447. Among  
448. Approach  
449. Brought to  
451. Remain  
452. Determine  
453. Intimidated  
454. Part of the  
455. Send out  
457. Among  
458. Approach  
459. Brought to  
461. Remain  
462. Determine  
463. Intimidated  
464. Part of the  
465. Send out  
467. Among  
468. Approach  
469. Brought to  
471. Remain  
472. Determine  
473. Intimidated  
474. Part of the  
475. Send out  
477. Among  
478. Approach  
479. Brought to  
481. Remain  
482. Determine  
483. Intimidated  
484. Part of the  
485. Send out  
487. Among  
488. Approach  
489. Brought to  
491. Remain  
492. Determine  
493. Intimidated  
494. Part of the  
495. Send out  
497. Among  
498. Approach  
499. Brought to  
501. Remain  
502. Determine  
503. Intimidated  
504. Part of the  
505. Send out  
507. Among  
508. Approach  
509. Brought to  
511. Remain  
512. Determine  
513. Intimidated  
514. Part of the  
515. Send out  
517. Among  
518. Approach  
519. Brought to  
521. Remain  
522. Determine  
523. Intimidated  
524. Part of the  
525. Send out  
527. Among  
528. Approach  
529. Brought to  
531. Remain  
532. Determine  
533. Intimidated  
534. Part of the  
535. Send out  
537. Among  
538. Approach  
539. Brought to  
541. Remain  
542. Determine  
543. Intimidated  
544. Part of the  
545. Send out  
547. Among  
548. Approach  
549. Brought to  
551. Remain  
552. Determine  
553. Intimidated  
554. Part of the  
555. Send out  
557. Among  
558. Approach  
559. Brought to  
561. Remain  
562. Determine  
563. Intimidated  
564. Part of the  
565. Send out  
567. Among  
568. Approach  
569. Brought to  
571. Remain  
572. Determine  
573. Intimidated  
574. Part of the  
575. Send out  
577. Among  
578. Approach  
579. Brought to  
581. Remain  
582. Determine  
583. Intimidated  
584. Part of the  
585. Send out  
587. Among  
588. Approach  
589. Brought to  
591. Remain  
592. Determine  
593. Intimidated  
594. Part of the  
595. Send out  
597. Among  
598. Approach  
599. Brought to  
601. Remain  
602. Determine  
603. Intimidated  
604. Part of the  
605. Send out  
607. Among  
608. Approach  
609. Brought to  
611. Remain  
612. Determine  
613. Intimidated  
614. Part of the  
615. Send out  
617. Among  
618. Approach  
619. Brought to  
621. Remain  
622. Determine  
623. Intimidated  
624. Part of the  
625. Send out  
627. Among  
628. Approach  
629. Brought to  
631. Remain  
632. Determine  
633. Intimidated  
634. Part of the  
635. Send out  
637. Among  
638. Approach  
639. Brought to  
641. Remain  
642. Determine  
643. Intimidated  
644. Part of the  
645. Send out  
647. Among  
648. Approach  
649. Brought to  
651. Remain  
652. Determine  
653. Intimidated  
654. Part of the  
655. Send out  
657. Among  
658. Approach  
659. Brought to  
661. Remain  
662. Determine  
663. Intimidated  
664. Part of the  
665. Send out  
667. Among  
668. Approach  
669. Brought to  
671. Remain  
672. Determine  
673. Intimidated  
674. Part of the  
675. Send out  
677. Among  
678. Approach  
679. Brought to  
681. Remain  
682. Determine  
683. Intimidated  
684. Part of the  
685. Send out  
687. Among  
688. Approach  
689. Brought to  
691. Remain  
692. Determine  
693. Intimidated  
694. Part of the  
695. Send out  
697. Among  
698. Approach  
699. Brought to  
701. Remain  
702. Determine  
703. Intimidated  
704. Part of the  
705. Send out  
707. Among  
708. Approach  
709. Brought to  
711. Remain  
712. Determine  
713. Intimidated  
714. Part of the  
715. Send out  
717. Among  
718. Approach  
719. Brought to  
721. Remain  
722. Determine  
723. Intimidated  
724. Part of the  
725. Send out  
727. Among  
728. Approach  
729. Brought to  
731. Remain  
732. Determine  
733. Intimidated  
734. Part of the  
735. Send out  
737. Among  
738. Approach  
739. Brought to  
741. Remain  
742. Determine  
743. Intimidated  
744. Part of the  
745. Send out  
747. Among  
748. Approach  
749. Brought to  
751. Remain  
752. Determine  
753. Intimidated  
754. Part of the  
755. Send out  
757. Among  
758. Approach  
759. Brought to  
761. Remain  
762. Determine  
763. Intimidated  
764. Part of the  
765. Send out  
767. Among  
768. Approach  
769. Brought to  
771. Remain  
772. Determine  
773. Intimidated  
774. Part of the  
775. Send out  
777. Among  
778. Approach  
779. Brought to  
781. Remain  
782. Determine  
783. Intimidated  
784. Part of the  
785. Send out  
787. Among  
788. Approach  
789. Brought to  
791. Remain  
792. Determine  
793. Intimidated  
794. Part of the  
795. Send out  
797. Among  
798. Approach  
799. Brought to  
801. Remain  
802. Determine  
803. Intimidated  
804. Part of the  
805. Send out  
807. Among  
808. Approach  
809. Brought to  
811. Remain  
812. Determine  
813. Intimidated  
814. Part of the  
815. Send out  
817. Among  
818. Approach  
819. Brought to  
821. Remain  
822. Determine  
823. Intimidated  
824. Part of the  
825. Send out  
827. Among  
828. Approach  
829. Brought to  
831. Remain  
832. Determine  
833. Intimidated  
834. Part of the  
835. Send out  
837. Among  
838. Approach  
839. Brought to  
841. Remain  
842. Determine  
843. Intimidated  
844. Part of the  
845. Send out  
847. Among  
848. Approach  
849. Brought to  
851. Remain  
852. Determine  
853. Intimidated  
854. Part of the  
855. Send out  
857. Among  
858. Approach  
859. Brought to  
861. Remain  
862. Determine  
863. Intimidated  
864. Part of the  
865. Send out  
867. Among  
868. Approach  
869. Brought to  
871. Remain  
872. Determine  
873. Intimidated  
874. Part of the  
875. Send out  
877. Among  
878. Approach  
879. Brought to  
881. Remain  
882. Determine  
883. Intimidated  
884. Part of the  
885. Send out  
887. Among  
888. Approach  
889. Brought to  
891. Remain  
892. Determine  
893. Intimidated  
894. Part of the  
895. Send out  
897. Among  
898. Approach  
899. Brought to  
901. Remain  
902. Determine  
903. Intimidated  
904. Part of the  
905. Send out  
907. Among  
908. Approach  
909. Brought to  
911. Remain  
912. Determine  
913. Intimidated  
914. Part of the  
915. Send out  
917. Among  
918. Approach  
919. Brought to  
921. Remain  
922. Determine  
923. Intimidated  
924. Part of the  
925. Send out  
927. Among  
928. Approach  
929. Brought to  
931. Remain  
932. Determine  
933. Intimidated  
934. Part of the  
935. Send out  
937. Among  
938. Approach  
939. Brought to  
941. Remain  
942. Determine  
943. Intimidated  
944. Part of the  
945. Send out  
947. Among  
948. Approach  
949. Brought to  
951. Remain  
952. Determine  
953. Intimidated  
954. Part of the  
955. Send out  
957. Among  
958. Approach  
959. Brought to  
961. Remain  
962. Determine  
963. Intimidated  
964. Part of the  
965. Send out  
967. Among  
968. Approach  
969. Brought to  
971. Remain  
972. Determine  
973. Intimidated  
974. Part of the  
975. Send out  
977. Among  
978. Approach  
979. Brought to  
981. Remain  
982. Determine  
983. Intimidated  
984. Part of the  
985. Send out  
987. Among  
988. Approach  
989. Brought to  
991. Remain  
992. Determine  
993. Intimidated  
994. Part of the  
995. Send out  
997. Among  
998. Approach  
999. Brought to  
1001. Remain  
1002. Determine  
1003. Intimidated  
1004. Part of the  
1005. Send out

**DOWN**  
1. Peace pipe  
2. Encourage  
3. Rye grass  
4. English  
5. Bright star  
6. Procession  
7. Among  
8. Male sheep  
9. Four  
10. Nocturnal  
11. Rebounds  
12. Opera by  
13. Only  
14. Unoccupied  
15. Generous  
16. Auctions  
17. Back of  
18. And not  
19. Pen point  
20. Took a  
21. Disposition  
22. Smoothed  
23. Stumble  
24. Nobleman  
25. Hearing  
26. Weapons  
27. Split  
28. Affection  
29. Twitching  
30. Bovine  
31. Six  
32. Exclamation  
33. Determined  
34. Intimidated  
35. Part of the  
36. Send out  
37. Among  
38. Approach  
39. Brought to  
40. Remain  
41. Determine  
42. Intimidated  
43. Part of the  
44. Send out  
45. Among  
46. Approach  
47. Brought to  
48. Remain  
49. Determine  
50. Intimidated  
51. Part of the  
52. Send out  
53. Among  
54. Approach  
55. Brought to  
56. Remain  
57. Determine  
58. Intimidated  
59. Part of the  
60. Send out  
61. Among  
62. Approach  
63. Brought to  
64. Remain  
65. Determine  
66. Intimidated  
67. Part of the  
68. Send out  
69. Among  
70. Approach  
71. Brought to  
72. Remain  
73. Determine  
74. Intimidated  
75. Part of the  
76. Send out  
77. Among  
78. Approach  
79. Brought to  
80. Remain  
81. Determine  
82. Intimidated  
83. Part of the  
84. Send out  
85. Among  
86. Approach  
87. Brought to  
88. Remain  
89. Determine  
90. Intimidated  
91. Part of the  
92. Send out  
93. Among  
94. Approach  
95. Brought to  
96. Remain  
97. Determine  
98. Intimidated  
99. Part of the  
100. Send out  
101. Among  
102. Approach  
103. Brought to  
104. Remain  
105. Determine  
106. Intimidated  
107. Part of the  
108. Send out  
109. Among  
110. Approach  
111. Brought to  
112. Remain  
113. Determine  
114. Intimidated  
115. Part of the  
116. Send out  
117. Among  
118. Approach  
119. Brought to  
120. Remain  
121. Determine  
122. Intimidated  
123. Part of the  
124. Send out  
125. Among  
126. Approach  
127. Brought to  
128. Remain  
129. Determine  
130. Intimidated  
131. Part of the  
132. Send out  
133. Among  
134. Approach  
135. Brought to  
136. Remain  
137. Determine  
138. Intimidated  
139. Part of the  
140. Send out  
141. Among  
142. Approach  
143. Brought to  
144. Remain  
145. Determine  
146. Intimidated  
147. Part of the  
148. Send out  
149. Among  
150. Approach  
151. Brought to  
152. Remain  
153. Determine  
154. Intimidated  
155. Part of the  
156. Send out  
157. Among  
158. Approach  
159. Brought to  
160. Remain  
161. Determine  
162. Intimidated  
163. Part of the  
164. Send out  
165. Among  
166. Approach  
167. Brought to  
168. Remain  
169. Determine  
170. Intimidated  
171. Part of the  
172. Send out  
173. Among  
174. Approach  
175. Brought to  
176. Remain  
177. Determine  
178. Intimidated  
179. Part of the  
180. Send out  
181. Among  
182. Approach  
183. Brought to  
184. Remain  
185. Determine  
186. Intimidated  
187. Part of the  
188. Send out  
189. Among  
190. Approach  
191. Brought to  
192. Remain  
193. Determine  
194. Intimidated  
195. Part of the  
196. Send out  
197. Among  
198. Approach  
199. Brought to  
200. Remain  
201. Determine  
202. Intimidated  
203. Part of the  
204. Send out  
205. Among  
206. Approach  
207. Brought to  
208. Remain  
209. Determine  
210. Intimidated  
211. Part of the  
212. Send out  
213. Among  
214. Approach  
215. Brought to  
216. Remain  
217. Determine  
218. Intimidated  
219. Part of the  
220. Send out  
221. Among  
222. Approach  
223. Brought to  
224. Remain  
225. Determine  
226. Intimidated  
227. Part of the  
228. Send out  
229. Among  
230. Approach  
231. Brought to  
232. Remain  
233. Determine  
234. Intimidated  
235. Part of the  
236. Send out  
237. Among  
238. Approach  
239. Brought to  
240. Remain  
241. Determine  
242. Intimidated  
243. Part of the  
244. Send out  
245. Among  
246. Approach  
247. Brought to  
248. Remain  
249. Determine  
250. Intimidated  
251. Part of the  
252. Send out  
253. Among  
254. Approach  
255. Brought to  
256. Remain  
257. Determine  
258. Intimidated  
259. Part of the  
260. Send out  
261. Among  
262. Approach  
263. Brought to  
264. Remain  
265. Determine  
266. Intimidated  
267. Part of the  
268. Send out  
269. Among  
270. Approach  
271. Brought to  
272. Remain  
273. Determine  
274. Intimidated  
275. Part of the  
276. Send out  
277. Among  
278. Approach  
279. Brought to  
280. Remain  
281. Determine  
282. Intimidated  
283. Part of the  
284. Send out  
285. Among  
286. Approach  
287. Brought to  
288. Remain  
289. Determine  
290. Intimidated  
291. Part of the  
292. Send out  
293. Among  
294. Approach  
295. Brought to  
296. Remain  
297. Determine  
298. Intimidated  
299. Part of the  
300. Send out  
301. Among  
302. Approach  
303. Brought to  
304. Remain  
305. Determine  
306. Intimidated  
307. Part of the  
308. Send out  
309. Among  
310. Approach  
311. Brought to  
312. Remain  
313. Determine  
314. Intimidated  
315. Part of the  
316. Send out  
317. Among  
318. Approach  
319. Brought to  
320. Remain  
321. Determine  
322. Intimidated  
323. Part of the  
324. Send out  
325. Among  
326. Approach  
327. Brought to  
328. Remain  
329. Determine  
330. Intimidated  
331. Part of the  
332. Send out  
333. Among  
334. Approach  
335. Brought to  
336. Remain  
337. Determine  
338. Intimidated  
339. Part of the  
340. Send out  
341. Among  
342. Approach  
343. Brought to  
344. Remain  
345. Determine  
346. Intimidated  
347. Part of the  
348. Send out  
349. Among  
350. Approach  
351. Brought to  
352. Remain  
353. Determine  
354. Intimidated  
355. Part of the  
356. Send out  
357. Among  
358. Approach  
359. Brought to  
360. Remain  
361. Determine  
362. Intimidated  
363. Part of the  
364. Send out  
365. Among  
366. Approach  
367. Brought to  
368. Remain  
369. Determine  
370. Intimidated  
371. Part of the  
372. Send out  
373. Among  
374. Approach  
375. Brought to  
376. Remain  
377. Determine  
378. Intimidated  
379. Part of the  
380. Send out  
381. Among  
382. Approach  
383. Brought to  
384. Remain  
385. Determine  
386. Intimidated  
387. Part of the  
388. Send out  
389. Among  
390. Approach  
391. Brought to  
392. Remain  
393. Determine  
394. Intimidated  
395. Part of the  
396. Send out  
397. Among  
398. Approach  
399. Brought to  
400. Remain  
401. Determine  
402. Intimidated  
403. Part of the  
404. Send out  
405. Among  
406. Approach  
407. Brought to  
408. Remain  
409. Determine  
410. Intimidated  
411. Part of the  
412. Send out  
413. Among  
414. Approach  
415. Brought to  
416. Remain  
417. Determine  
418. Intimidated  
419. Part of the  
420. Send out  
421. Among  
422. Approach  
423. Brought to  
424. Remain  
425. Determine  
426. Intimidated  
427. Part of the  
428. Send out  
429. Among  
430. Approach  
431. Brought to  
432. Remain  
433. Determine  
434. Intimidated  
435. Part of the  
436. Send out  
437. Among  
438. Approach  
439. Brought to  
440. Remain  
441. Determine  
442. Intimidated  
443. Part of the  
444. Send out  
445. Among  
446. Approach  
447. Brought to  
448. Remain  
449. Determine  
450. Intimidated  
451. Part of the  
452. Send out  
453. Among  
454. Approach  
455. Brought to  
456. Remain  
457. Determine  
458. Intimidated  
459. Part of the  
460. Send out  
461. Among  
462. Approach  
463. Brought to  
464. Remain  
465. Determine  
466. Intimidated  
467. Part of the  
468. Send out  
469. Among  
470. Approach  
471. Brought to  
472. Remain  
473. Determine  
474. Intimidated  
475. Part of the  
476. Send out  
477. Among  
478. Approach  
479. Brought to  
480. Remain  
481. Determine  
482. Intimidated  
483. Part of the  
484. Send out  
485. Among  
486. Approach  
487. Brought to  
488. Remain  
489. Determine  
490. Intimidated  
491. Part of the  
492. Send out  
493. Among  
494. Approach  
495. Brought to  
496. Remain  
497. Determine  
498. Intimidated  
499. Part of the  
500. Send out  
501. Among  
502. Approach  
503. Brought to  
504. Remain  
505. Determine  
506. Intimidated  
507. Part of the  
508. Send out  
509. Among  
510. Approach  
511. Brought to  
512. Remain  
513. Determine  
514. Intimidated  
515. Part of the  
516. Send out  
517. Among  
518. Approach  
519. Brought to  
520. Remain  
521. Determine  
522. Intimidated  
523. Part of the  
524. Send out  
525. Among  
526. Approach  
527. Brought to  
528. Remain  
529. Determine  
530. Intimidated  
531. Part of the  
532. Send out  
533. Among  
534. Approach  
535. Brought to  
536. Remain  
537. Determine  
538. Intimidated  
539. Part of the  
540. Send out  
541. Among  
542. Approach  
543. Brought to  
544. Remain  
545. Determine  
546. Intimidated  
547. Part of the  
548. Send out  
549. Among  
550. Approach  
551. Brought to  
552. Remain  
553. Determine  
554. Intimidated  
555. Part of the  
556. Send out  
557. Among  
558. Approach  
559. Brought to  
560. Remain  
561. Determine  
562. Intimidated  
563. Part of the  
564. Send out  
565. Among  
566. Approach  
567. Brought to  
568. Remain  
569. Determine  
570. Intimidated  
571. Part of the  
572. Send out  
573. Among  
574. Approach  
575. Brought to  
576. Remain  
577. Determine



# Faith Organizations Schedule Speakers

## Student Religious Retreat To Feature Beatriz Couch

Speakers, discussions, desserts and retreats will highlight the activities of campus religious units this weekend.

Protestant Religious Council will sponsor a two-day retreat, the study of the Bible and the life of Jesus, from 7:30-10:30 p.m. Friday and Saturday. From 1 p.m. to 4 p.m. Sunday, the Catholic Student Union will hold a retreat. Mrs. M. J. Couch, who is the secretary of the Protestant Religious Council, will be the speaker for the Protestant Religious Council. She is a graduate of Princeton Theological Seminary with an M.A. degree. After graduating from the National Lutheran School of Theology in Minneapolis, she did graduate work at the University of Minnesota. She also received a B.A. degree from the University of Georgia.

Couch is currently working with the Lutheran Student Association in the U.S. and is a member of the Lutheran Student Association. She will be speaking at the Protestant Religious Council retreat. She is also a member of the Lutheran Student Association in the U.S. and is a member of the Lutheran Student Association.



BEATRIZ COUCH  
Christian Missions leader

at the United States to share with students her understanding of the Christian world mission movement.

The program will include a worship service followed by a talk on "Nature and Purpose of the Church." Friday, there will be another worship service with a talk on "Prophetic Mission of the Church in Times of Rapid Change."

Bible Study on "Unity and the Church" will be held and a talk on "The Measure of a Christian" will be given. Beatriz Couch will give a talk on "The Church and the World."

Arch 1

## Groups Must File Quota Petitions

Organizations wishing to enter a quota for an event during spring term must file a petition to AWS by March 2. Petitions are available in the AWS office, third floor of the student activities building.

The reason behind governing of petitions is to increase the participation and efficiency of petitions of groups by the AWS. Under this new system petitions will be sent to the AWS at the beginning of spring term stating the events for which petitions are needed, thus allowing the groups to elect all the members at the same time.

## Famous Choral Clubs at Dorm Dance

Major attraction at the "Valentine" dance Friday at Emmons Hall will be the Emmons Glee Club. The club also will be guests at a reception at the home of Janet H. Anderson, professor of psychology.

## 1000 and 1 Items for just 1c

During our spectacular 1c Sale Chairs, Tables, Mattresses, Lamps, rugs etc. Everything for the home IV 7-0683

DEMAREST FURNITURE MART  
2021 E. Michigan  
IV 7-3610

## Around Campus

# Hearts and Flowers

By JOYCE ROBB  
State News Society Editor

WILL THAT MAN remember Valentine's Day this year? This is a question Spartan coeds are wondering today. The answer—one never knows!

There was a time when Valentine's Day was extra special—parties, flowers, candy, perfume or jewelry from a beau. Perish the thought that a date would arrive without a bundle in his pocket or under his arm this day.

This is not the trend today. The main emphasis is now placed on studio cards with modern art and satirical humor. This is not what Valentine's Day was meant to be or the tradition that has been followed since its origin in the fifth century by Bishop Valentine, the Patron Saint of Lovers.

ALTHOUGH THERE are many stories about the origin of Valentine's Day, the general one follows a custom as ancient as history itself.

In the third century, the Roman Emperor Claudius abolished marriage for the Roman soldiers because he felt that it made them less rugged to stand up under the rigors of warfare.

Bishop Valentine disagreed with this decree and continued to officiate at marriage ceremonies, secretly. When this was discovered, he was sent to jail and died there. He soon became known as a friend of lovers and martyrs.

In the fifth century the Pope dedicated Feb. 14 as the day of lovers.

ANOTHER ORIGIN of the sentimental began in the days of the Romans also. They had an annual feast when the names of young men and women were put in a box and drawn by chance. These special partners were called Valentinians.

Still others attribute the holiday to the fact that during the Middle Ages birds began to mate on Feb. 14, hence the day was dedicated to lovers.

## Frank C. Laubach

# Literary Expert Talks About World Crisis

Speaking before four Lansing and East Lansing church groups Sunday and Monday will be Dr. Frank C. Laubach, honorary president of World Neighbors, Inc.

The greater Lansing chapter of World Neighbors is bringing Dr. Laubach, one of the world's leading literary experts, to give four speeches on the theme, "The Present World Crisis—What You Can Do About It."

Dr. Laubach will preach the sermon at the 9:30 a.m. service Sunday at Peoples Church. He will also be speaker for the Christian Student Foundation campus Vespers program at 7:30 p.m. Sunday in Peoples Church. Preceding this he will be the guest of CSF for its weekly vespers supper at 6 p.m. in College House.

In Lansing Dr. Laubach will preach the sermon at the 11:15 a.m. service Sunday of the Central Methodist Church. His final talk here will be 7:30 p.m. Monday at the First Baptist Church in Lansing. All of these speeches are open to the public.

Each One Teach One has become the slogan identifying Dr. Laubach who has spent his life teaching the natives of various countries to read their own language.

## Festivities Honor Dan Cupid

# Valentine Spirit invades MSU

A host of parties and dances centering around Valentine's Day have been planned by the various campus units for this weekend.

Kappa Delta's will entertain their dates to the theme of "My Funny Valentine" at the Kappa Delta house Friday from 8:30-12 p.m. Each coed will present her date with an original Valentine. Records will provide the music for dancing and card games and television will be available.

Zeta Tau Alpha will express all suppressed desires at a "Secret Desire" party at the chapter house from 8-12 p.m. Friday. The coeds and their dates will be masqueraded as someone they have always wished to be.

Flapper girls and Sigma Chi's clad in ruckers will be seen at a "Roaring 20's" party at the Sigma Chi house from 9-12 p.m. Friday. The house will be decorated like a speakeasy, complete with three gambling tables, paper money and beer and wine.

Les Valentines will be the theme of a French Valentine

party at the Alpha Sigma Phi house from 9-12 p.m. Friday. The men and their dates will dance to the mellow strains of Les Valentines.

Gamma Phi Beta's and their dates will honor their new pledges at a dance at the house from 9-12 p.m. Friday. The strains of the Playboy's combo will fill the dining room which will be decorated according to the Valentine spirit.

The "Sweetheart Swing" theme of Lambda Hall's term party, will be carried out to the fullest degree in the Lambda dining room from 9-12 p.m. Friday. The girls and their dates will dance to the music of Jim Vesper's with Barbara Hutchins as emcee. Cupid's Cupid's, a penmanship, will be in the dining room.

Beta Theta Phi's are also having St. Valentine's with a party at the chapter house from 9-12 p.m. Friday.

Pi Kappa Phi's are planning their winter term party this Friday. The affair will begin with a buffet dinner at the chapter house at 4 p.m. Following dinner,

the group will go to the American Legion Hall in East Lansing, where they will dance to the music of the Smith-Jackson Orchestra. At intermission, some lucky coed will be crowned Rose Queen of Pi Kappa Phi. Entertainment will be at the Lansing Civic Center from 6:30-12 p.m. Saturday. After dinner, the group will dance to the strains of Edson Gates.

An informal pizza party and social dance is being planned by the men of Hendrick House from 8:30-12 p.m. Saturday. The girls will play the roll of "Red Hot" and "Bottle Washer" when they make the pizza for their dates.

Sales and a speaker from the International Farm Youth Exchange will entertain the Alpha Gamma Rho's and their dates from 8:30-12 p.m. Saturday.

MICHIGAN STATE NEWS  
February 14, 1958 Page Three

## Engagements

### FARMHOUSE

Connie Ames, Three Rivers to Jim Gleason, Three Rivers senior; Evelyn Hibbard, Byron to Donald Shepard, Byron junior; Betty Tompkins, Big Rapids senior to David Randall, Reed City senior; Janet Welsh, Ionia to Phil Jones, Sorance junior; Doris Fueling, Three Rivers to Ray Bowers, Three Rivers junior.

### Attention Parents

Because of the large increase of married students on the MSU campus, the society page is featuring a column devoted to birth announcements. Pertinent information sent to the State News society editor should be typed and include the parent's names, baby's name, date of birth, and weight.

## SPORTS CAR SHOW

## NATION'S LARGEST

Open 9 to 9

Entire Program Included in Museum Admission



Famous sports cars, past and present! Many shown in Detroit for the first time!

SPECIAL PROGRAM TONIGHT 8:00 P.M.

Hear 1937 American racing champion Paul O'Shea "Sports Car Competition Driving"

## HENRY FORD MUSEUM GREENFIELD VILLAGE • Information LO 1-1122



## LOOK SHARP.

in two most important ways. First, with accurate vision afforded by glasses prescribed by your eye doctor.

And, second, with the very latest styling in frames offered in our complete selection.

## EAST LANSING OPTICAL CO.

Above Jacobson's

ED 2-3916

GET MORE OUT OF LIFE GO OUT TO A MOVIE

## GLADMER

THEATRE • PHONE IV. 2-9831

LAST TIMES TODAY

WALT DISNEY'S "OLD YELLER"

STARTING SATURDAY

POSITIVELY ONE WEEK ONLY

a phenomenon

a phenomenon you have to see to believe

Walt Disney's "OLD YELLER" is a phenomenon you have to see to believe

Walt Disney's "OLD YELLER" is a phenomenon you have to see to believe

Walt Disney's "OLD YELLER" is a phenomenon you have to see to believe

Walt Disney's "OLD YELLER" is a phenomenon you have to see to believe

Walt Disney's "OLD YELLER" is a phenomenon you have to see to believe

Walt Disney's "OLD YELLER" is a phenomenon you have to see to believe

Walt Disney's "OLD YELLER" is a phenomenon you have to see to believe

Walt Disney's "OLD YELLER" is a phenomenon you have to see to believe

Walt Disney's "OLD YELLER" is a phenomenon you have to see to believe

Walt Disney's "OLD YELLER" is a phenomenon you have to see to believe

Walt Disney's "OLD YELLER" is a phenomenon you have to see to believe

Smartest coat going... in any weather!

PLAID-LINED COTTON POPLIN "CRUISER"

## LONDON FOG

... the one coat you need

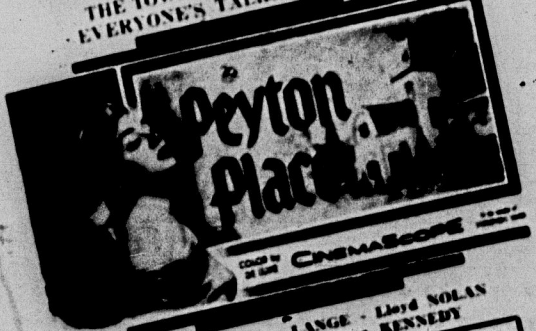
Bright look for a gray day... right look for any day! The coat, the under-collar, the pocket flaps are all lined in the same exclusive tartan plaid. The "Cruiser" keeps out wind as well as rain, stays wrinkle-free and crisp looking through real rugged wear. Natural. Sizes 36 to 46. Regular, Long. \$25

## SMALL'S

211 So. Washington Ave.  
Open 'til 9 P.M. Friday Night

## MICHIGAN

HELD OVER! 2nd BIG WEEK!  
THE TOWN — THE PEOPLE —  
EVERYONE'S TALKING ABOUT!



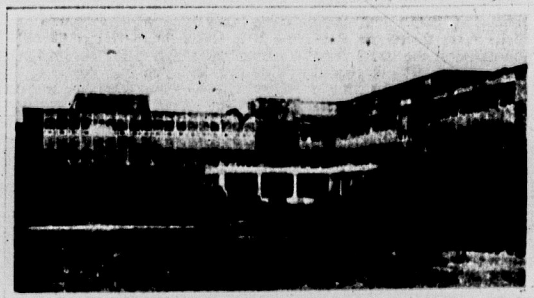
Lana Turner - Hope Lange - Lloyd Nolan  
Russ Tamblyn - Arthur Kennedy

Prices: This Engagement. Adults, Weekday Mats. 50c  
Evenings \$1.25 (inc. tax) Children Always 30c  
4 SHOWS DAILY at 1 - 3:35 - 6:15 - 9 P.M.

NEXT ATTRACTION — Rock Hudson - Jennifer Jones — "FAREWELL TO ARMS"



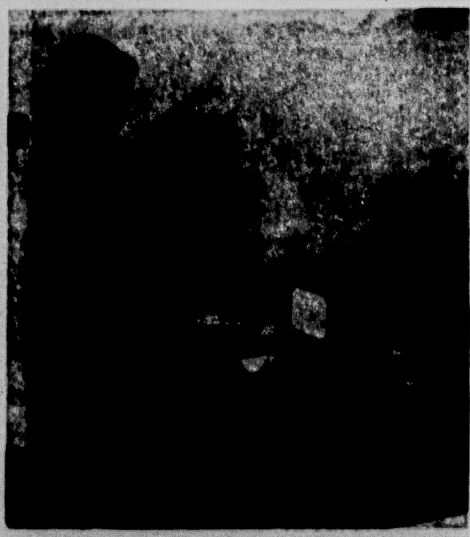
# "The Easy Way to Place a Classified"



Meet April Cameron, Sigma Kappa Senior, showing you the easy way to place a Campus Classified. April skips over to Student Services (just a minute from Berkey) and enters the main lobby of the newest building on campus.



The elevator to the third floor takes a half a minute... out the elevator right into the office of the Michigan State News... your daily newspaper. A complete State News Campus Classified schedule gives you choices galore for buying those new skis, finding a new room to live or a ride home.



Meet Mrs. Judy Webster the morning receptionist at the State News office... always helpful and willing to help you write the ad THAT GETS RESULTS!

The easy way to place a Campus Classified... takes only a few minutes... Results: surprising and wonderful either to your pocketbook or wondering mind.

## CAMPUS CLASSIFIEDS

ED 2-1511  
Ext. 2615

### 36 Top High School Students Vie for Alumni Scholarships

Eighty-six outstanding high school students, all in the upper five percent of their graduating class, will be visiting MSU today and Saturday to get a good look at the campus and to enter final competition for the Alumni Distinguished Scholarship Award. The students all received a score above the ninetieth percentile on the national scholarship rating exam given to 250,000 participants.

While here, the students will visit the departments of their individual major interests and will be guests at a faculty student tea this afternoon. They will stay in dormitories tonight and tomorrow will compete in a three-hour eliminating exam. The persons receiving the ten highest scores on this exam will be awarded the scholarships, which include \$1,000 per year for four years.

Campus Classifieds... Low Cost

#### MIDAS MUFFLERS

GUARANTEED AGAINST BLOWOUT AND RUSTOUT

— LOW PRICED FAST SERVICE —  
— INSTALLATION FREE —

BRAKES INSTALLED	FORDS '51 thru '57 CHEVS	\$14.95 INSTALLED
---------------------	--------------------------------	----------------------

Two Shops

Midas Muffler Shop Heights Auto Parts  
120-122 W. Ionia St. 3939 N. East St. (US-27)  
Phone IV 4-5015 Ph. IV 2-3015 - IV 5-3846

### So Say Weathermen

## Air Bubble Bursts; Cold Spell Results

KANSAS CITY (AP) — What gives with this weather? Hard freezes, record snows down south. Teeth-rattling cold and persistent snowfalls up north. Fog, rain and minor flooding in California.

"Nothing unusual," said District Forecaster Robert Sanders Thursday. "That is," he added, "if you look at the weather over a span of 20 years like we do. People forget."

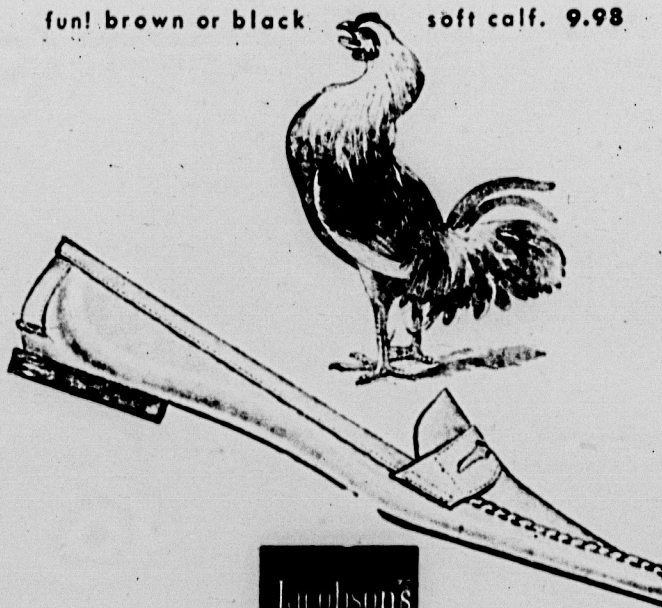
Directly responsible for the current cold spell, he explained, is a giant bubble of Arctic air which burst over the Great Plains in January and drained off, slowly seeping southward. "It was so cold and deep something had to give," he said. D. M. Hansen, Acting Chief Forecaster at the District Meteorological office here, concurred. "A number of things brought about the rupture," he said. "Many of them we don't know yet. What we do know is this: 'It is a normal thing for cold masses of air to form over the polar regions this time of year and build up to the extent where they eventually must flow out. Then by sheer weight, this cold, which is heavier than warm air, breaks through into the lower latitudes. The northwesterly winds, blowing roughly out of Alaska, carry the cold air down over the Great Plains. That is the general pattern."

"But this time, the cold well spread out. For years, now, cold air extends all the way from Siberia across the Bering sea, Alaska, Canada, across the southern United States and south central United States. Even out into the Gulf of Mexico. We had a report from a tugboat off the Louisiana coast that had two inches of snow on deck."

"The usual thing is the cold's tendency to persist. Hansen went on. "Nothing has dislodged it yet, largely due to the upper air circulation which shows no sign of changing. The winds are still flowing from northwest to southeast, preventing the cold air mass from being displaced."

As for the shivering cold which has gripped the area, Hansen said, "I think the weather for now," he pointed out, "is just what we need."

something to crow about... the heavenly comfort and rugged strength of Oldmaine Trotters' classic loafer... hand-sewn, streamlined, such fun! brown or black soft calf. 9.98



Lauchson's

For a

steak

The

Pagoda

1821 E. Michigan

indispensable cotton knit, Henry Rosenfeld's wash-by-hand basic that is equally at home under wraps or under the sun. blue, brown or beige jacquard, or ribbed solid color. 8-18.12.98



our white terry duster, monogrammed just for you... a three-way dry-off by Evelyn Pearson for bath, dorm, beach or nursery. wear it belted in front, all around or chemise-style. s,m,l. 8.98



casual dresses



## Pinnings

**ALPHA KAPPA PSI**  
Laurie Brown, East Lansing sophomore to Jim Berna, Wyandotte junior.

**ALPHA PHI**  
Kay Higgins, Pleasant Ridge sophomore to Bill Shanks, Royal sophomore and Beta Theta Pi; Kathleen, Harrisburg, Penn. to Bruce Macguire, U of M and Phi Upsilon; Jan Piper, U of M, junior to Pete Voss, Oakes Park, Ill., senior and Sigma Nu.

**BETA THETA PI**  
Ann Hubbard, Skidmore College to Gordon Smith, Westfield, N.J. junior.

**DELTA ZETA**  
Vally Wesson, Park Ridge, Ill., sophomore to Carl Streicher, U of M, senior; Barbara Gelland, Royal Oak junior to Mary Voss, Oakes Park, Ill., senior and Sigma Phi.

**FARMHOUSE**  
Marlene Diehl, Davison sophomore to Jim Johnston, Davison sophomore; Bonnie Huetner, Kalamazoo, senior; Jim Thar, Desatur junior.

**KAPPA DELTA**  
Maxine Harris, Milington, junior to Lou Weiler, Grand Haven sophomore and Delta Tau Delta; Mary Mark, Detroit sophomore to Steve Maloney, Brownburg, senior and Sigma Alpha.

**PHI DELTA THETA**  
Suzanne Winburne, Lansing sophomore to Tom Knight, Lansing sophomore; Ann Taylor, U of M and Delta Phi to Bob Wray, senior; Mary Watson, senior sophomore and Phi Delta to Craig Van Sciever, senior sophomore; Nancy Jackson junior to Pat Cole, Chicago junior.

**PHI KAPPA TAU**  
Kay Bennett, Midland sophomore and Delta Delta Delta to Ed Burley, Wilmette, Ill., sophomore; Corrine Bower, Torrance, Cal., freshman and Alpha Gamma Delta to Don Musser, Lansing junior.

**PI KAPPA PHI**  
Mary Ann Baba, Flint sophomore to Mike Chase, Lapeer junior.

**SIGMA ALPHA MU**  
Andrea Lansing, Chicago sophomore to Ron Adelman, Detroit senior.

**SIGMA CHI**  
Mary Lou Anderson, Ann Arbor freshman to Tom Kimen, La Grange, Ill., senior; Lynn Lakro, senior, U of M and Delta Delta Delta to Ken Kaestner, senior; Kay Carroll, Lowell College senior to Ed Wohl, Glen Ridge, N.J., senior; Jean Cooner, Lakeland, Fla. junior and Alpha Chi Omega to Lawrence Harding, Detroit senior.

**ZETA TAU ALPHA**  
Clare Reetz, Detroit senior to Tom Sadone, U of M and Delta Phi; Joyce Heitner, Chicago, Ill., sophomore to Ross Evert senior and Phi Kappa Sigma; Jeanne Kay Voss, Lansing, Air Force Base, Va., senior to Cadet Rose Russell, U of M, senior and Russell Russell, U of M, senior; Sharon Redlaw, Oakes Park, Ill., junior and Phi Kappa Sigma; Carol Schubert, Lansing senior to Peter McGee, Norfolk, Va., senior and Phi Mu Alpha.

**For VALENTINE'S DAY**

**The Remembrance Bracelet**

A gift for her

Engrave name and birthday on a heart or date.

From **Ranney Jewelers**  
Next to State Theater  
Certified Gemologist  
REGISTERED JEWELER  
AMERICAN GEM SOCIETY

## Tight Class Schedule?

Call Sue Jordan, IV 9 6551

When your schedule is too packed to get your shopping done, call Knapp's Personal Shopper who will do your shopping for you! Purchases will be delivered promptly.



**Make a Shopping Date for Knapp's Today... Open 9:30 a.m. to 9 p.m.**

## Look! It's the Chemise Look In Pajamas

Sleepwear News For '58

**\$3.98**

What fun to dress! Here at the dawn of frivolous permanent pleats and dainty lace trim these adorable shortie pajamas with the new Chemise look! Choose them in Pink or Blue stripes or polka dots, in drip-dry sheer cotton hosiery. With bloomers panties to match. S-M-L.

KNAPP'S SECOND FLOOR



## Streamliners by Bonnie Doon to Wear for Fun

**\$3.95**

These skin tight stockings are the newest development in hosiery. Made of stretch nylon for perfect fit, comfort and long wear. For sports, lounging, exercise or dancing, with bermudas, kilts, flared or Black in Short. Average 1/2" Tall.

KNAPP'S STREET FLOOR

## Viva Panties... The Girdle for Active Girls

**\$10.95**

Designed specifically for wear with all sports clothes. Made of nylon power net with satin elastic front panel, cotton-Dacron® back panels. 2 1/2-in. waistband, detachable garters. In White.

• In Misses Dress Sizes

KNAPP'S SECOND FLOOR

from the **Formfit** Designers' Collection



## Slim-Line Fashion News for Juniors

JUST TWO OF THE MANY TO BE FOUND AT KNAPP'S

**\$14.95 \$22.95**

The silhouette, slim and gentle, the fabrics, silk, cotton, rayon and many drip-dry blends, emphatically tailored, the shades, your very favorites. All with but one purpose, to make you look pretty as possible this season. These two from our new fashion collection to take you traveling from month to month.

(A) Sue Brett tailored dress of cotton rayon with plunging neckline and striking belt. In Beige or Powder Blue. 7-11. \$14.95

(B) Jonathan Logan blouse on back cut of pure silk with belted neckline and stand-away collar. In Green or Orange. 5-11. \$22.95

KNAPP'S DRESSES — SECOND FLOOR



## The Tailored Shirt With 'Personality'

HAS YOUR INITIALS

**\$3.98**

Golden initials pin on Orange and Green diamond motif of this lovely cotton broadcloth blouse to make it personally yours. It takes just an instant, and so nice because the blouse launders as easily as a hanky! Sizes 32-38.

KNAPP'S STREET FLOOR



## SEW IT yourself

## Exciting Modern Fabrics at Savings

CUPION®, DACRON®, ORLON® BLENDS

**88c yd.**

Be the first to see these miracle blend fabrics that mean easy-care in smart, crisp daytime fashions. 45" wide, washable of course, they live a long life without wrinkles. Make selections now and save yourself many dollars!

SEWING CENTER—THIRD FLOOR

\* Dupont Trade Marks







# Leading Spartan '5' Opposes Illinois

## Cagers Aim To Gain Sole Right of 1st

A pair of blue-chip games face Michigan State's cagers, presently deadlocked with Indiana for the hectic Big 10 leadership, this weekend.

Coach Fordy Anderson's co-defenders battle Illinois (3-3) Saturday afternoon at 4:30 in the Big 10 Fieldhouse in the Big 10 "Game of the Week" which will be nationally televised. Monday night the Spartans travel to Ann Arbor to engage arch rival University of Michigan.

A Spartan triumph over the Hoosiers would give State (5-3) unopposed possession of first place in the Big 10. A win would once again push State into the midst of the pack.

Michigan is entertained by Ohio State in Columbus, Purdue is pitted against Wisconsin at Madison and Northwestern takes on Minnesota in Gopherland in other crucial league games.

Coach Harry "Combs" Illini, teamed with Wisconsin for the past year, come into Saturday's game after trouncing tough Purdue Monday night, 99-84. Illini will unveil the highest offense machine in the conference, 70 points per game.

The chief engineer in this attack is 6'3" guard Don Smith, an All-Conference choice last year and well on his way to duplicating the feat this season. Recent statistics reveal the shooting artist is hitting at 43.3 percent clip for second place on the league's shooting derby.

In addition to Oll, Combs will refer to guard Roger Taylor, averaging around 15, forward John Paul, at 13 per game, forward Marnie Jackson at 14, and center Governor Vaughn at 12 as his starting quintet.

Although the figures show Illinois' main weakness being rebounding, its entire front-line consists of great jumpers," said Anderson. "Illinois is a fast, quick team with excellent shooting.

"We experienced trouble during the week's practices in working on a pressing defense and I am sure we can do better Saturday containing the Illini. Also we will refrain from throwing the ball away if we hope to win."

Anderson plans on keeping his team intact. That means center Don Green, forwards Bob Anderson and Larry Hadden, guard Capt. Jack Quiggle and Don Band will begin the game.

Monday night State exposed its biggest offensive power of its campaign registering 90 points against Iowa.

Dominant standouts in the Spartan victory were Green, Anderson and Quiggle who averaged 18 points.

Green, sixth in the league's scoring with a 17.4 average and 11.1 nationally in rebounds with 10.6 and 26 points.

Hadden made the biggest leap in the Big 10's ratings from 22nd to a three-way tie for seventh, 24.2 points Monday against Iowa in the league contest average 21.7.

Quiggle, along with playing a solid steady game, pumped 25 points in the Iowa encounter, the largest scoring spree this year.

A TV half-time show will highlight the broad physical education program at State, with emphasis on intramural sports. Games open at 3 p.m.

PROBABLE LINEUP	
POS.	ILLINOIS
Center	P. Taylor
Forward	C. Vaughn
Guard	Oll
Guard	G. Taylor



Since we had difficulties in obtaining a picture of the German Gymnastic team we felt that our readers would not be displeased with this picture of statuesque Ernestine Russell.

## Face Gophers, 'Cats

## Spartan Swimmers Seek Sixth Straight

By JOHN HOFFMAN

Michigan State's undefeated swimming team faces two opponents this weekend. Today they meet Northwestern in Jensen pool at 4 p.m. and then board a plane for Minnesota to meet the Gophers on Saturday.

The Spartans will be seeking their sixth and seventh straight dual meet victories.

Minnesota did not place a man in the 1957 Big 10 finals, but swimming a great rebuilding job under their new coach Bill Heuser. They are much improved over last year, but probably will not pose a serious threat to the Spartans' perfect record.

State is expected to use approximately the same swimmers in their respective events that Coach Chuck McCaffrey has been successful with so far this year.

Two of Northwestern's top point swimmers have been ruled ineligible. Dave Pennington, their outstanding backstroke, and Ralph Lindahl, the Wildcats only diver will both be lost for the remainder of the season.

Pennington was NCAA runner-up in the 100 and 200-yard backstroke events last year. The loss of these two swimmers will undoubtedly be felt by Northwestern coach Bill Peterson.

Perhaps their outstanding swimmer is Paul Schutt, a freestyler who finished fourth in the Big 10 in the quarter mile and fifth in the 220. Schutt beat State's Jim Clemens in last year's dual meet with a time of 4:52.2 in the 100.

Schutt will probably swim in both relays with Craig Peterson, Jim Schacht, and Bob Smith.

Minnesota's Mike Chapp's time in the 200-yard breaststroke is very close to State's first man, Frank Mordino, and better than our number two man.

Other men expected to provide points for Minnesota are Jim Gaudin in the 100-yard freestyle, and Don Flykt in the 220 and 440 yard freestyle.

State swimmers who have been consistent winners are not expected to be greatly taxed by either Northwestern or Minnesota.

In the Spartans' previous five straight wins their lowest margin of victory was 17 points against Indiana. At the other extreme they won over Iowa State by 47 points.

Spartans favored in their events this weekend are Billy Stuart in the distance freestyle events, Bud Harmon in the butterfly, Wally Dohler in the individual medley, Al Coxon in the backstroke, and Don Patterson in the sprints.

## Sophomore Tanker Unbeaten

## Steuart Praised by Coach

By DAVE ROGERS

"Billy Steuart is perhaps the best middle-distance swimmer prospect ever to come to Michigan State, and shows promise to become one of MSU's all-time greats."

These are the words of praise that Coach Chuck McCaffrey had to say for his outstanding sophomore freestyler from Johannesburg, South Africa.

Steuart has broken Michigan State freshmen records in the 220, 440 and 1500-yard freestyle races. He has stepped into a varsity spot and performed like a veteran in winning every race he participated in so far this season.

The 21-year-old sensation is a product of King Edward VII prep school in Johannesburg which is rated the best swimming school in South Africa. Billy follows in the wake of two brothers who also swam and interested him in the sport.

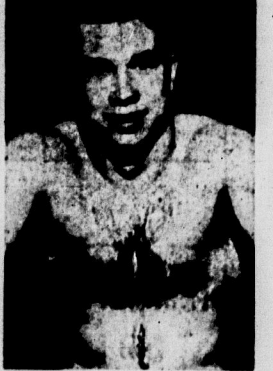
While still in high school and only 16, Steuart won the South African 440 championships in the Empire Game trials. He participated in the Games for South Africa in 1954.

He rates these races his greatest thrills in swimming, and states, "As you get older the thrills get much fewer and far between."

As an Olympic contestant for South Africa in 1956 Billy swam

in the 100-meters, the 400-meters and the 200-meters relay. He placed 16th in the 400 and swam on the South African relay squad that came in 8th.

The current project on the fire for Steuart is the qualification



BILLY STEUART

sophomore record breaker

for the 1958 Empire Games to be held in Scotland sometime this summer. Coach McCaffrey is sending Billy's outstanding times to South African swimming officials for his qualification.

## Sports

Night Sports Editor — Darwin Bennett  
Assistants — Don Yeddo — Beverly McKenzie

MICHIGAN STATE NEWS

February 14, 1958

Page Seven

## Boston Blasts Wings

BOSTON (AP)—Boston powered its way past the Detroit Red Wings, 5-0, and into a second place the Thursday night with one of its best offensive displays of the National Hockey League season. Bronco Horvath scored his 21st goal for the Bruins while Vic Stasiuk and Jerry Toppazzani collected their 10th.

Boston pulled ahead of idle New York as a result of the contest which featured goalie Harry Lumley's second shutout of the campaign and 6th in the NHL, as well as the scoring spree of Stasiuk, who had 37 points.

The Bruins Red Wings are a point behind the pair in fourth position instead of a point in front of the Bruins as they had

been prior to the Boston Garden battle.

Losers to Detroit in only three of their 11 meetings, the Bruins put together in the first period and three in the second and continued their blazing assault to outplay the Wings in the third.

Stasiuk and Toppazzani got the first period lullies on tips after down shots by defenseman Allan Stanley and Fernie Flaman, respectively.

Lumley, summoned to replace the injured Don Simmons last month, came up with 31 saves in his 10th game for Boston. Sawchuk had 36.

## LUCON

LAST LANSING • PHONE ED 2694

Laff Hit No. 1 1:00 - 4:10 - 7:25 - 10:40

The hilarious G. I. story FILMED ENTIRELY OFF LIMITS!

### OPERATION MAD BALL

VERY FUNNY!

It's got Mrs. Bing Crosby... lovely Kathy Grant!

with DICK YOUNG - JAMES DARRIN - ROGER SMITH - WILLARD LEELE

Laff Hit No. 2 Shown 2:45 - 6:00 - 9:20

"COMPLETELY DAFFY!" - N.Y. JOURNAL-AMERICAN

"THE CASTING IS PRACTICALLY PERFECT!" - N.Y. HERALD TRIBUNE

THE MOVIE no niece or nephew can afford to miss!

COLLINS PRESENTS JACK LEBRON EDNA ROVACS KATHY GRANT ARTHUR O'CONNELL and MURRAY HONEY

HOW TO MURDER A RICH UNCLE

STARTING WEDNESDAY

Extra Added! Mr. Magee Cartoon

TOP RECORDING STARS! JACK WATSON BIG BEAT

Summer Love

## WE HAVE THE FUNNIEST VALENTINES ON THE CAMPUS

CHESTER ROBERTS HALLMARK CARD SHOP

309 E. GRAND RIVER

## WE HAVE THE FUNNIEST VALENTINES ON THE CAMPUS

CHESTER ROBERTS HALLMARK CARD SHOP

309 E. GRAND RIVER

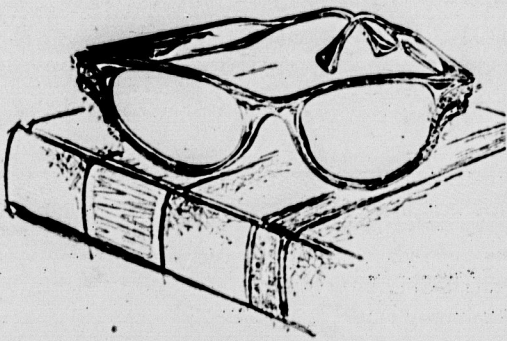
## A BEAUTIFULLY MOVING THING! '58 CHEVROLET

It brings you a RADICAL NEW V8,\* a new Full Coil suspension, a new Safety-Girder frame—more new things than any car ever offered before. Don't put off driving this one!

Chevy was built to put a zest into driving that hasn't been there before. You sense this the instant you feel the slikeness of an engine like the new Turbo-Thrust V8. It's an extra-cost option that gives you extra-quick action the second your foot flicks the gas pedal. Chevy's new Full Coil suspension is standard. Or, for the last word in comfort, you can even have a real air ride, optional at extra cost. See your Chevrolet dealer for good-at-gold buys right now! \*Optional at extra cost. Display this famous trademark.

See your local authorized Chevrolet dealer for quick appraisal—prompt delivery!

## USE CAMPUS CLASSIFIEDS



"best sellers" in fashion eyewear are always at Wallace's

Rarely does a week go by that a new style in fashion frames isn't added to our already vast selection of eyewear. Included in our offices are over 275 different designs of leading manufacturers, both American and foreign... all boasting good design, taste and quality. Why not stop in today?

eye examinations by Dr. W. C. Jensen, registered optometrist

**WALLACE OPTICIANS**  
State Theater Bldg., East Lansing • Ph. ED 2-3117  
also offices Downtown at 107 N. Washington—Ph. IV 2-1175

## TONIGHT AT ODAM'S

BROILED STEAK OR FRIED SHRIMP  
COMPLETE DINNER \$1.75

Saturday — Broiled U.S. Choice 10 oz. Steak — Complete \$1.75

DON'T FORGET SUNDAY!!

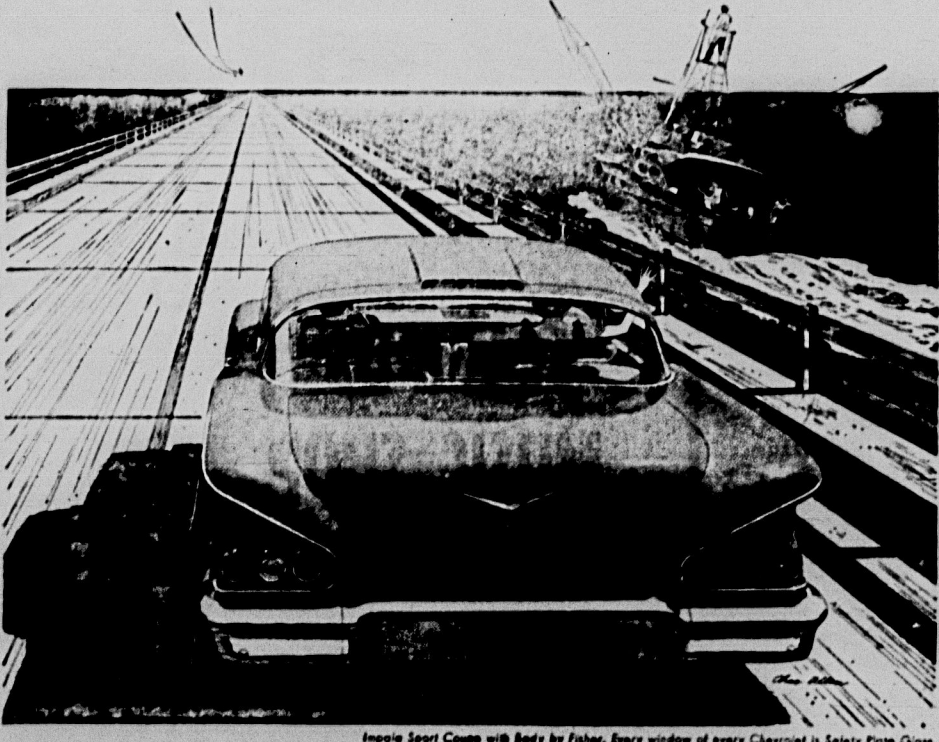
### ITALIAN SPAGHETTI BUFFET

An EYE and TASTE appealing Buffet Table of Real Italian Style Spaghetti  
Jello mold or chef's salads  
Thousand Island or French Dressings  
French Bread and Butter or hot garlic butter  
Coffee and your choice of a sherbet or ice cream

ALL YOU CAN EAT FOR \$1.25

THE BUFFET DINNER WILL BE SERVED FROM 4-8 P.M.  
OTHER DINNERS FROM 12-8 P.M.

**ODAM'S**  
Two Blocks From Campus  
1040 E. Grand River • ED 2-6373



Impala Sport Coupe with Body by Fisher. Every window of every Chevrolet is Safety Plate Glass.



# Witness Accuses FCC Man Bribery Charged In TV Licensing

WASHINGTON (AP)—House investigators heard testimony Thursday that Federal Communications Commissioner Richard A. Mack admittedly accepted several thousands of dollars from a lawyer active in getting a Miami television license.

Bernard Schwartz, ousted counsel to the House subcommittee on legislative oversight, told the group. Mack has described the money as loans, but has said some were "forgiven" by the lawyer and has "no specific recollection" of repaying any of them.

Schwartz appeared as a subpoenaed witness before the committee which fired him last Monday night. He produced from the committee files canceled checks totaling \$2,650 which he said were given to Mack by Thurman A. Whiteside after

## Ooops, Sorry Pi Phi's

Ten Pi Beta Phi pledges were incorrectly listed under Delta Zeta sorority's heading in Thursday's State News. The misplaced ladies are: Gail Bettlinger, Elizabeth Errant, Judith Faris, Jane Furlong, Mary Griffith, Shirley Hengesbach, Judy Hoenigle, Sharon Jones, Carol Klonte and Judith Koller.

Mack became a member of the license-granting commission. Schwartz said Whiteside has a reputation in Florida as a "fixer" and that he represented Public Service Television, Inc., a wholly owned subsidiary of National Airlines.

At Miami, Whiteside commented: "He is living in his teeth. He is testifying contrary to the information in his possession." In the case, Public Service Television, Inc., was granted Miami's channel 10 franchise by a 4-2 vote of the FCC. Mack was one of the four commissioners who gave Public Service Television the license. Three other applicants competing for FCC's channel 10 were: WFLA-TV, WTVT-TV and WFTS-TV.

Mack could not be reached for comment. Rep. Harris (D-Ark.), new chairman of the House subcommittee, said he will be given a chance to tell his version and if he withholds any information "there will be ways to get it."

In other developments stemming from the explosive House report: 1. Schwartz said the subcommittee files contain copies of two letters from Chief White House Aide Sherman Adams relating to a matter under consideration at the time by another Federal Regulatory Agency. 2. Sen. Morse (D-Ore.) called in the Senate for a separate inquiry by that body into FCC and five other government regulatory agencies. Morse, who briefly had custody of Schwartz' working files, said there was more than enough for both the House and Senate to investigate.

3. House Speaker Rayburn (D-Tex.) voiced confidence the House group will make a thorough inquiry under the leadership of Harris, who took over the chairmanship when Rep. Moulder (D-Mo.) resigned in protest against Schwartz' ouster.

## Union Board States Latin America Dance

South of the Border, a Union Board informal dance, will be held Saturday night from 9-12 in the Union Ballroom. Vela Lelloy and his Latin American combo will provide entertainment. Tickets are \$3.75 per couple.



Bob Burns, emcee of WKAR-TV's "Man in the Kitchen," discusses the Les Goumets dinner-dance, "A Night in Blue Hawaii," with students of the Hawaiian Club, Harry Chun and Doris Kumano. Looking on is Zoe Peckman, chairman of food productions for the affair. The table-setting shown here is an example of the style to be used at the dinner-dance.

## Library Buys Collection

The Douglas C. McMurtrie manuscript collection, a group of more than 100,000 pieces relating largely to printing and its history, has been acquired by the library. Included are first drafts and corrected proofs of the McMurtrie books, speeches and other writings, together with much unpublished data and correspondence covering the author's long and active career, reported

librarian, Jackson E. Towle. Other materials deal with the personal life and the business and scholarly activities of the author of the well-known "History of Printing in the United States."

# HI-FI Components SALE

## 20% to 40% OFF

Stereotapes — 1/3 off

# CAMPUS MUSIC SHOP

On Grand River Just Across from the Union



WE AT KESEL'S  
WONDER IF YOU HAVE FORGOTTEN  
TODAY IS  
VALENTINE'S DAY  
SEND YOUR BEST GAT A REMEMBRANCE  
FROM OUR VARIED SELECTIONS  
HURRY IN OR PHONE ED 2-3519  
FOR TODAY'S DELIVERY

**NORM KESEL FLORIST**  
Across from the Union



## Organization Totals for Record-Setting Blood Drive

UNIT	PERCENT	UNIT	PERCENT	UNIT	PERCENT
<b>FRATERNITIES</b>		<b>SORORITIES</b>		<b>WOMEN'S DORMS</b>	
Delta Epsilon	100	Gamma Phi Beta	52	Van Housen	61
Farmhouse	100	Delta Beta Theta	103	North Campbell	50
Alpha Epsilon Pi	100	Kappa Alpha Theta	103	North Williams	22.5
Alpha Sigma Phi	100	Alpha Delta Pi	103		
Pi Kappa Tau	100	Alpha Kappa Alpha	103		
Pi Epsilon	100	Alpha Epsilon Phi	103		
Pi Delta Theta	100	Alpha Phi	103		
Theta Xi	100	Alpha Kappa Delta	103		
Zeta Beta Tau	100	Zeta Tau Alpha	103		
Sigma Alpha Mu	100	Sigma Kappa	103		
Theta Chi	100	Sigma Chi	103		
Sigma Alpha Epsilon	100	Pi Sigma	103		
Alpha Phi Alpha	100	Kappa Phi	103		
Alpha Gamma Rho	100	Alpha Kappa Psi	103		
Beta Theta Pi	100	Delta Tau Delta	103		
Alpha Chi Sigma	100	Pi Kappa Psi	103		
Lambda Chi Alpha	100	Phi Omega Psi	103		

# Attend Church This Sunday



## East Lansing — Campus Churches

**METHODIST CHURCH OF EAST LANSING**  
Wilson M. Tennant, Minister  
Sunday Services  
9:30 a.m. - Worship  
Red Cedar School  
10:30 a.m. - Church School  
Red Cedar School  
One Block West of S. Harrison Rd.  
On Sever Dr.  
11:00 Worship Service  
State Theatre  
Abbott Rd.  
Nursery Available

**ALL SAINTS EPISCOPAL CHURCH**  
University Episcopal Center  
800 Abbott Road - ED 2-1313  
Rev. Gordon M. Jones - Rector  
Rev. John F. Porter - Chaplain  
**SUNDAY SERVICES**  
8:00 A.M. Holy Communion  
9:30 A.M. Family Service and Church School  
11:00 A.M. Morning Prayer or Holy Communion and Sermon  
**CANTERBURY CLUB**  
5:30 P.M. Sunday

**FIRST CHURCH OF CHRIST SCIENTIST**  
Branch of The Mother Church  
The First Church of Christ Scientist, Boston, Mass.  
705 E. Grand River  
**SUNDAY SCHOOL**  
9:30 University Students  
11:00 All Others  
**SUNDAY SERVICE**  
"SOUL"  
11:00 -  
Reading Room  
131 W. Grand River  
Mon., Tues., Thurs.  
9 a.m. - 5 p.m. and 7 p.m. - 9 p.m.  
Wed., Friday  
9 a.m. - 5 p.m.  
Saturday 9 a.m. - 1 p.m.  
Sunday 3 p.m. - 5 p.m.  
All are welcome to attend Church Services, and visit and use the Reading Room.

**PEOPLES CHURCH EAST LANSING**  
Interdenominational  
700 West Grand River at Michigan  
REV. C. BRANT TIEFT, Pastor  
**SERMON - 9:30 A.M.**  
"THE WORLD CRISIS AND WHAT YOU CAN DO"  
Sermon by Dr. Frank Laubach  
**SERMON - 11:00 A.M.**  
"THE OVERFLOW OF A LIFE"  
Sermon by Rev. Roy J. Schramm  
Church School  
9:30 A.M. 11:00 A.M.  
Crib room through high school age

**CHRISTIAN STUDENT FOUNDATION**  
AT PEOPLES CHURCH  
148 W. Grand River  
Sunday, Feb. 16  
9 a.m. Breakfast Forum at Village House. Coffee, donuts and informal discussion.  
9:30 and 11 a.m. Worship Services at Peoples Church. Dr. Frank Laubach will speak at the 9:30 a.m. service.  
6:30 p.m. Campus Vespers at Village House. Beginning with buffet supper. At 7:30 p.m. Dr. Frank Laubach will speak on "The Present World Crisis - WHAT YOU CAN DO ABOUT IT" in the sanctuary of Peoples Church.  
EVERYONE WELCOME

**MARTIN LUTHER CHAPEL**  
(Missouri Synod)  
441 Abbott Road  
Chapel ED 2-0718  
Parsonage ED 2-4672  
**SUNDAY SCHEDULE**  
Morning Worship 9:30 and 11 a.m.  
Cost Supper  
Gamma Delta Program 8 p.m.  
Vespers 8:15 p.m.  
DR. GERHARD MUNDINGER

**UNIVERSITY LUTHERAN CHURCH**  
(National Lutheran Council)  
Division at Ann Street  
Charles Klinkisch, Pastor  
Donald W. Herb, Campus Pastor  
Church ED 2-5571  
Parsonage ED 2-2735  
**SUNDAY SCHEDULE**  
Services: 9:00, 10:15, 11:30 a.m.  
University Fireside 10:15 a.m.  
**LUTHERAN STUDENT ASSN**  
6 p.m. - Supper  
7:00 P.M.  
Churches Don't Just Happen  
Pastor Hahn of Faith Lutheran Church in Okemos, speaker  
Wednesday 7 a.m.  
Matins and Breakfast

**EAST LANSING TRINITY CHURCH**  
314 MAC Avenue  
A Bible Teaching Ministry  
In the Center of East Lansing  
E. EUGENE WILLIAMS, Pastor  
**WORSHIP SERVICES**  
11:00 a.m.  
"AN INCREDIBLE LAW OF SPIRITUAL ECONOMICS"  
7:30 P.M.  
Worship Service in charge of TRINITY COLLEGIATE FELLOWSHIP  
**OTHER SERVICES**  
9:45 a.m. Sunday School with a class for University students  
6:15 p.m. TRINITY COLLEGIATE FELLOWSHIP  
All University Students Welcome  
7:00 p.m. Prayer and Bible Study each Wed. Night

**ST. JOHN CHURCH CATHOLIC STUDENT CENTER**  
327 MAC. Ave.  
Sunday Masses 7:30 8:45 10:00 11:30  
Daily Mass 6:45 A.M.  
Confession Saturday  
6:00 to 5:30 P.M. - 7:30 to 9:00 P.M.  
Newman Club Event:  
Open House Sunday 8:15 P.M.  
Student Center  
Phone ED 2-5718  
Forty Hours Devotion  
Beginning Sunday at 10 o'clock  
Mass Services in evening at 7:30 p.m. Sun., Mon., Tues.

**EASTMINSTER PRESBYTERIAN CHURCH**  
East Lansing Junior High School  
819 Abbott Road  
Rev. Robert L. Morland, Pastor  
"THE MARKS OF A MAN"  
Sermon by Rev. Morland  
**SUNDAY 10:00 A.M.**  
The college Age Church School Class will be held at 9:00 A.M. every Sunday in the room by the west entrance.  
Mr. and Mrs. Tom Green, Leaders  
Mr. and Mrs. Theron Mills, Sponsors  
Coffee Will Be Served  
Sunday School  
for  
Cribbery Through Junior High

**EDGEWOOD PEOPLES CHURCH**  
Interdenominational  
409 N. Hagadorn Road  
(3 blocks north of Grand River)  
Rev. Truman A. Morrison, Minister  
9:30 a.m. & 11:00 a.m.  
WILL MAX PREVAL  
Sermon by  
Rev. Truman Morrison  
Church School at 9:30 and 11 a.m. for Nursery through 6th Grade  
Junior High Class - 9:30  
Senior High Class - 11:00  
High School Fellowship - 7 to 9 p.m.

**EAST LANSING UNITY CENTER**  
425 W. GRAND RIVER  
RONIE G. MILLER, Pastor  
MORNING WORSHIP AT 11 A.M. "A LIVING FAITH"  
Sunday School 11 A.M.  
DON CIRCLE, Soloist  
Wednesday Meeting 8:00 p.m. - Healing Meeting  
Affiliated with Unity School, Lee's Summit, Mo.  
HELEN CLARK, Organist  
Invites You  
Sunday School - 10:00 a.m.  
Church - 11:00 a.m.  
Young Peoples - 6:30 p.m.  
Sunday Night Service - 7:30 p.m.  
Enjoy  
friendliness + good music + a church  
Please call ED 2-0785 for a ride

**OKEMOS BAPTIST CHURCH**  
NEAR THE CAMPUS  
Rev. Howard Johnson, Pastor  
Invites You  
Sunday School - 10:00 a.m.  
Church - 11:00 a.m.  
Young Peoples - 6:30 p.m.  
Sunday Night Service - 7:30 p.m.  
Enjoy  
friendliness + good music + a church  
Please call ED 2-0785 for a ride

**UNIVERSITY CHRISTIAN CHURCH**  
Marble School, N. Hagadorn Rd.  
Ministers:  
Virgil Felton and Robert Girdwood  
**SERVICES**  
Bible School - 9:45 a.m.  
Morning Worship - 10:45 a.m.  
Youth Meetings - 6:00 p.m.  
Evening Worship - 7:00 p.m.

**INTER-CITY BIBLE CHURCH**  
2827 E. MICHIGAN  
Independent, Fundamental, Pre-Millennial  
REV. G. J. TUNSTRA, PASTOR  
9:45 a.m. SUNDAY BIBLE SCHOOL  
11:00 a.m. MORNING WORSHIP SERVICE  
6:00 p.m. YOUTH GROUPS  
7:00 p.m. EVENING INSPIRATIONAL SERVICE  
For Transportation call IV 9-7103  
**SOUTH BAPTIST CHURCH**  
South Washington at Moores River Drive  
Pastor Howard Suggs  
First Anniversary Services of Worship in Our New Auditorium  
10:00 A.M. BIBLE SCHOOL  
11:00 A.M. "WHY MUST CHRIST RETURN?"  
Fourth in a series on the facts of Faith  
11:00 A.M. "MOVING TOWARD ARMAGEDDON"  
YOU ARE CORDIALLY INVITED  
Call IV 7-9382 For A Ride  
Free Bus Transportation Arriving Shaw Hall 9:20 a.m. Will Proceed down Farm Lane, Auditorium Rd., Physics Dr. to Dormitory Rd. Leaves Bethel Manor 9:30 a.m. (Same Route 6:20 p.m.)

**LANSING CHURCHES**  
**FIRST PRESBYTERIAN CHURCH**  
Ottawa at Chestnut  
(Fisher Bus Line)  
Rev. William G. Kuhn, Minister  
David S. Feazell, Parish Minister  
Nile Harper, Minister of Christian Education  
Two Worship Services  
10:00 and 11:30  
Mr. Kuhn preaching at both services  
**PLYMOUTH CONGREGATIONAL CHURCH**  
Allegan at Townsend  
opposite the Capitol  
Church School & Sunday Worship at 11 a.m.  
Ministers  
Dr. John W. Claxton  
Rev. Philip E. Rekow  
Mr. Richard E. Klausli  
**Visit the University Chapel**

**UNIVERSALIST-UNITARIAN CHURCH**  
S. Holmes at Prospect  
(2 blocks South of Sparrow Hospital)  
Sunday Service 11:00 A.M.  
Church Sch. & Nursery (Rides from Union - 10:30 A.M.)  
Abbott Road Entrance  
Adult Fellowship 2nd Sun. 7:30 P.M.  
Couples Club - 4th Sun. 7:30 P.M.  
ON CAMPUS  
Fellowship of Religious Liberals Sun. 6:30 P.M. - Room 12-Union  
Rev. Gerald K. Wyman, Pastor (IV 9-3655)  
**CENTRAL METHODIST CHURCH**  
Ottawa at Capitol  
9:45 and 11:15 Services of Worship  
Sermon  
Dr. Morrison, Preaching  
We will provide transportation to our second worship service each Sunday. The Wesley Foundation BLS will pick up students according to the following schedule:  
10:20 - West Shaw Hall Parking lot  
10:35 - Mason Dorm Corner  
10:50 - Wesley House (343 Park Lane)  
10:50 - Rather Hall  
11:10 - Arrival at CENTRAL METHODIST  
12:30 - Return trip to campus  
**FIRST CHURCH OF THE NAZARENE**  
Genesee at Butler, Lansing  
FRED J. HAWK, Pastor  
Sunday School - 9:45 a.m.  
Youth Groups - 6:00 p.m.  
Divine Worship - 11:00 a.m.  
Evangelistic - 7:00 p.m.  
**A CORDIAL INVITATION**  
**FIRST CHRISTIAN CHURCH**  
(Disciples of Christ)  
Corner of Holmes and Eureka St.  
1 blk. South of Sparrow Hospital  
Church School 9:45 a.m.  
Morning Worship 10:45 a.m.  
Chi Rho (ages 12-14) 6:00 p.m.  
C.Y.F. (Senior High & College Age) 8:00 p.m.  
Call ED 7-9761, Rm. 425-A for transportation.

Work day at time work all the VOL. Ca W Sta De Michi terribl B The Sp plan the was the 5 point of But to end-som Amer-to real the ga over the initial up p.m. The Sp no longi stan thr 1. Aven induced 1 year, 70-6 2. Streu undisput 1 Beat has won 4 Paring a forward center Pet Recent Nilsson 3 ... spe hosts per averaged In addit Coach Hill ward Geo per game, and suppo Assumini roles for Under Hee rre and Quiggle at In Satu tion Stat ing 10 vi Perform tract of ess other Emory A truly oute such bo in the ed During the Seorta ng defens the Hini point hav special Sourtans sweet and Hinos. Striking Green, Ho Quiggle so vent State way in the Illinois 12 the a Self goal before gu the first to Over 10 mi Seeking Pat of Harry Con but t some. Hils the lighty Interme Sourtans b on. See C UB Com Jazz Ba The Uni from utter fater of j to be pres 4 during U ster Lans been empl promoues Rulerwort chairman, As an ex Griffin, w harp will mission.