

# Shelton, Washburn Named to Head S'News, Spartan

Shelton and V. Glen Washburn named to the top positions of the State News and Spartan at a Board of Publications meeting Wednesday night.

Shelton, Detroit junior, will be Editor-in-Chief for summer and fall terms. Washburn, East Lansing senior, will be the Spartan next fall, winter and spring terms.

Shelton will be acting editor-in-chief the remainder of spring term, effective Monday. He will succeed Arthur Underwood, senior, under a March 13, 1954, Board of Publications ruling. Underwood was appointed to fill the position of editor-in-chief until the May meeting.

Shelton is certain that the board has

acted wisely in making its appointments. I am sure that the new editors will continue to produce the high quality publications Michigan State has become famous for," Underwood said. He expressed his appreciation to all the people who made his terms of office so interesting and enjoyable.

Other State News appointments included Harold Bateman, Goshen, New Jersey, senior, managing editor for fall term and Dolores Dover, Hancock junior, who was reappointed business manager. Betsy Halberg, Lewiston sophomore, was named darkroom manager.

Tom Gaskin, Detroit junior, was ap-



Pictured are Publication Board appointees, Dolores Dover, V. Glen Washburn and Hal Bateman.

pointed business manager of the Spartan.

Shelton has worked on the State News for nine terms, having held the positions of sports editor, city editor and managing editor. A member of Sigma Delta Chi, national men's journalism honorary, he has worked on the Wolverine and Spartan.

"The State News has been an All-American newspaper for ten years and I am sure we will keep it that way," Shelton said.

Bateman, a three-year army veteran, has worked on the State News two years and has held the position of night editor and sports editor.

Miss Dover has worked on the State

News for three years and has held the position of advertising director, retail advertising manager, assistant retail advertising manager, classified advertising manager, assistant classified advertising manager and summer advertising director.

Miss Halberg, a member of Kappa Alpha Mu, national photography honorary, has been State News office manager three terms.

Washburn has held the Spartan positions of layout editor and advertising artist.

Gaskin has held the position of Spartan advertising manager and assistant business manager.

## Michigan State News

EAST LANSING, MICHIGAN—THURSDAY, MAY 10, 1954

PRICE 5 CENTS

### Justices approved by Congress

Palmer to Remain Chief Justice

Justices were named to the All-University Judiciary and accepted Wednesday at last meeting of Student Press, 5th session.

Just court appointees are: Watson, East Lansing; Harold Paul, Flint; Bennett, Oak Park, Ill.; Bill Rice, Toledo, Ohio; Lane Campbell, Detroit; and Marcia Kierland, Minn. sophomore.

Palmer, Jackson senior, remain on the court as justice.

The new court were submitted to a nomination committee consisting of Bill Mansfield, Government president, and Palmer.

Four-hour meeting was devoted to minutes of last year's session and a preliminary report of the group insurance investigating committee will be held to Leland Carr, university attorney, today.

Results of class officer and government elections will be obtained by calling the Student Government Office at 11 tonight. The university phone is 2652.

Insurance commissioner and who have approached the state. Harry Christie, Des Moines, will draw up a bill.

Bill must be back by May 15, after consideration, Michigan.

Others have also been sent to Ohio State, Illinois, and Purdue universities inquiring about their insurance plans.

The bill introduced last week transferred \$733 from the Michigan Student Fund to the Michigan State Fund.

Representative Bill Warm, originator of the bill, said this amount would be used for the purchase of the new building for the Michigan State Fund.

Temporary charter for the Michigan State Fund will be in the Records Office.

Final Day Apply for Diploma

The final day for students to apply for their diplomas is today. Students must appear in person to receive their diplomas.



A scene from the Theta Alpha Phi production, "Deep Are the Roots" is shown above. The play will run nightly until Saturday.

### 'Deep Are the Roots' Masterfully Enacted

By JOE HOFFMAN  
State News Night Editor

Back in 1945, a show called "Deep Are the Roots" opened on Broadway. It was fairly successful, but nothing special. Wednesday night, another version of "Deep Are the Roots" began a four-night run in 19 Aud. The difference—a great box-office success and something very special.

Nearly 150 persons jammed their way into the tiny Studio Theater and some 25 others were turned away. Only a limited number of tickets remain at the Union Ticket Office for the remaining three nights.

Directed by Paul Moore and presented by Theta Alpha Phi, national dramatics honorary, "Deep Are the Roots" hit hard at one of the leading issues of the day—the relationship between the Negro and the white person.

It hit it with all the impact of professionalism. The cast fully understood the problem and acted it out with full mastery of the author's intentions.

It was a sensitive production, and the audience often reacted with audible reactions to various lines and actions throughout the evening.

It is difficult to single out any one or two actors from the splendid cast of 10. In the role of the returning Negro war veteran faced with the problem of readjustment, Luther Robinson gave a creditable performance in the demanding role.

As the white girl in love with

Robinson, Joanne Stamper looked mightily pert and added much charm to the play.

Jann Rose gave another one of her fine performances as Miss Stamper's older and supposedly wiser sister who was torn between the love for her Northern fiancée and her loyalty to her native southern homeland.

In the role of Senator Langdon, the master of the home setting of the play in a small southern town, Howard Rubin rose to the occasion as the elderly senator who had been a part of the South too long to see one Negro man destroy what it stood for.

First-timer Dennis Alwood did an exceptionally good job in the role of Miss Rose's fiancée. A writer, Alwood couldn't grasp the meaning of Negro prejudice and even tended to leave his prospective bride rather than see an innocent Negro man be hanged.

The comedy relief was ably provided by Joe Oberle. An important (by his own mention) man in town, Oberle was one of those two-faced gentlemen who

See REVIEW, Page 5

## Soil Plan Meets Approval

### Williams Announces Governor Candidacy

Will Try for Fifth Term; Hart Seeks Re-Election

By THE ASSOCIATED PRESS

Gov. Williams, who made history as the first Democrat to serve three terms as Michigan's chief executive, announced today he will seek a fifth term in what he described as "one of the greatest jobs in the world."

His announcement, made at one of his daily press conferences, came as no surprise to members of either party.

Neither did the simultaneous announcement by Lieut. Gov. Philip Hart that he, too, will seek re-election.

Williams used the occasion to repeat earlier statements that he is not running for any office on the national ticket.

"I categorically deny that I have been a candidate for any national office," he said.

The 45-year-old governor said he saw "no practical possibility" of a Williams draft at the Democratic National Nominating Convention.

Even if there were a draft, he said, he could see no way to run on the national ticket after his nomination for governor.

Under Michigan law, a gubernatorial nominee can disqualify himself only by moving out of the state or by becoming physically unable to run.

Since the August primary precedes the national convention, Williams would be stuck with the gubernatorial nomination if he received a national bid.

State Democratic Chairman Neil Staebler said, however, that Democrats will continue to boost the governor as a "favorite son" candidate for president.

Governor's aides said the first nominating petitions for Hart and Williams went out in the mail today.

They will need some 10,000 signatures by June 10—the last date for filing.

Williams, elected to his first term in 1948, said he felt he could leave office with a "quiet conscience" at this point.

But the approach of automation, the spread of "suburban" problems of higher education and other issues challenge him to remain in office, he said.

"There is no evidence that the present leadership of the Republican party is any more aware of today's new problems than it was of yesterday's," he said.

See WILLIAMS, Page 8



Green Splash swimmers splash for the photographer in preparation for the water show, "Disneyland" which opens tonight.

### Opening Tonight

## Green Splash to Present Disneyland Performance

Davy Crockett, Pinocchio, Lady and the Tramp, and Peter Pan will be on campus tonight at 8:15 when Green Splash presents its annual water show in the Women's Gym pool.

Performances will be held Friday and Saturday nights also. Tickets for all three shows may be purchased at the Union Ticket Office at \$1.00 and \$1.25.

Such old song favorites as "Zip-a-dee-Do-Do," "Bibbidi-Bobbidi-Boo," and "When You Wish Upon a Star" will be featured in this year's "Disneyland" show.

Featured in the show will be Judy Haga, Okemos junior, and Sandy Giltner, East Lansing freshman, runners up in the National Senior AAU Synchronized Swimming Duet Championship in Utah during spring vacation.

The two duets have been asked to tour Japan for six weeks this summer, entertaining servicemen with their precision water ballet.

Rendle Scott, Flint sophomore, and Jean King, Detroit senior.

### Unidentified Man Molests 2 Boys

A sex molestation involving two boys, four and five years old, occurred Tuesday afternoon in the married housing area, according to Campus Police.

The incident happened behind the first section near the Space provided for trailers.

A man who has been described, but not identified, lured the boys into an unlocked trailer.

He is described as being white, 26-30 years old, about six feet tall, large heavy build, ruddy complexion, dirty-blond hair, wearing light colored trousers, a checked sport shirt, no hat or jacket, but wearing a wristwatch.

The description was obtained from an area resident, a housewife, who observed him with the children.

The police urge parents to warn children not to engage in conversation, accept money, candy, or rides from any stranger at any time.

### Senate Ag Committee Gives OK

Tentatively Passes Ike's Requests

WASHINGTON (AP) — The Senate Agriculture Committee Wednesday night completed approval of a new soil bank bill after loading it down with a late flurry of amendments.

Chairman Ellender (D-La.) told reporters he thought the proposal could win approval of President Eisenhower who vetoed a previous catchall farm bill.

Sen. Aiken (R-Vt.), who often speaks for the administration on farm policies, expressed doubts about complicated compromise proposals for price supports on corn, and other livestock feed grains.

"I think we may be able to work this out later on the Senate floor," Aiken said.

Rejected was President Eisenhower's request for authority to make advance payments to farmers this year if they agree to take land out of crop production next year and put it in the "soil bank."

Instead the committee accepted a proposal that would authorize payments this year to any farmer who actually put part of his land in the soil bank this year.

The vote to send the bill on to the Senate was 13-1, with Sen. Williams (R-Ill.) voting no. Sen. Aiken passed "until I read over the provisions again in the morning."

The House, in passing its new farm bill recently, voted to peg supports for four feed grains—

See SOIL BANK, Page 5

### Polls Open From 8-6:30

## Voting for Class Officers, Student Congress Begins

Class officer and Student Congress campaigns will close today when student voters go to the polls for the spring term final elections.

On campus students will vote in their dorms. Voting will be conducted in the Union Concourse for co-op, sorority, fraternity, married housing, Lansing and East Lansing students.

The polls will be open 8 a.m. to 6:30 p.m., said Sheila Jennings, elections commissioner.

Voters must present student ID's at the polls. Voters are not required to vote for all four officers in their class. Students must vote in their own district and for the class they will assume fall term.

Students will vote for class officers on special cards which later will be run through a tabulating machine to facilitate counting, according to Miss Jennings.

Student Congress final results will be hand-tabulated.

Final senior class candidates are: president—Barry Grant and Pat Wilson; vice president—Ed Looney and Tom Gregory; secretary—Marylou Brown and Pat Tavenner; treasurer—Liz Bendlin and Bobbi Williams.

Junior finalists are: president

Bill Bopf and Bob Wolfgram, vice president—Lynn Campbell and Dan Webb; secretary—Ann Mottinger and Jan Sterling; treasurer—Fred Koenig and Marjorie Masteller.

Finalists in the sophomore race are: president—George Curtis and Bruce Kyburz; vice president—Louise Hornbeck and Dave McAffree; secretary—Donna Larson and Arlene Thompson; treasurer—Linda Coulter and Sally Sharp.

Two representatives will be elected from the following districts: Phillips, Arnie Decker, Bruce Fillmore, Marne Gleason and Dennis Masser, East Swan, Ernie Bartholomew, Karl Kiefer, Charles Leider and Ed Rogers, West Swan, Len Efron, Jack Haan, Bill Keough and Lyle Sanders.

Mason, Virginia Dudley, Joni Handelman, Mary Sullivan and Linda Unthank; Abbott, Connie Mapes, Anne McKay, Marilyn

See VOTING, Page 8

## Deficient in Vitamin D

# 1,200 Albino Rats Play Guinea Pig

By ANN TUKEY

The fourth floor of Kedic Chemical Laboratory is the last place in the world where anyone would expect to hear the patter of tiny feet.

Yet there they are—all 4,800 of them.

Kedic hasn't been converted into a nursery school, however. The feet belong to the Hoppest albino rats who make their homes in Michigan State's official rat laboratory.

To get to the fourth-floor laboratory, the visitor must climb a steep, rickety flight of stairs leading into what looks like a rusty old attic.

When he reaches the top, he will find the 1,200 little white animals in their cages. They are being used in a continuing experiment known as the "Vitamin D essay."

In this experiment, the young rats are separated into groups and put on diets deficient in Vitamin D. They are then fed samples of milk from various dairies around the state.

Some small bones are removed from the right front paws of the rats and treated with silver nitrate. The reaction determines whether the milk contains enough Vitamin D to cause the bones to recalcify.

"Some city laws require milk having 400 units of Vitamin D added to be tested," explains Mrs. Clarence Decker, graduate assistant in chemistry, "to see if it contains the amount specified."

Mrs. Decker and her husband were among a group of six who were given a United States Public Health Grant for their vitamin research. The others were professors Richard O. Byerum, and Carl A. Hoppe, of chemistry, Dr. Bernard V. Alfriedson, head of the department of physiology and

pharmacology, and Robert MacKenzie, graduate assistant in chemistry.

MacKenzie and Mrs. Decker are now working on experiments dealing with cadmium and chromium toxicity in water.

"We're trying to find out whether a small amount of either element will have any effects on the body as a whole," Mrs. Decker said.

The laboratory also supplies other departments which might have some use for the rats, such as: zoology, animal husbandry, galactology, psychology, and even home economics.



High Friday inclusive  
day holidays; weekly during  
between Sunday and Friday  
of March 2, 1990 at the post  
0, for one term. (2) for two

OPTICAL



# Today's Hydrogen Explosion Called Missile Warhead Test

**EDITOR'S NOTE:** The following dispatch is written by one of 15 news media representatives who will witness a hydrogen bomb detonation in the Pacific this week, weather permitting. It is sent to the State by special arrangement.

By MARVIN MILES  
Los Angeles Times Correspondent

ENVIETOK, May 10 (May 9, S. P. Press) — There is little doubt that the hydrogen explosion scheduled for today about 6 p.m. (GMT) here will be the first of a series of tests of an intercontinental ballistic missile.

There is a rush program on to build the huge ICBM weapons which will be launched from the space to carry death and destruction over about 10,000 miles.

With huge amounts of money being poured into the missile program, particularly in view of Soviet boasts of development in this field, it is evident that the United States must be preparing the missile warheads that will arm the mighty weapons.

A significant fact, too, that the hydrogen bomb was not a complete success, by scientists' admission, although it is called a "hydrogen" bomb, is that it was a "thermonuclear" bomb.

There was a true bomb why it was not a complete success. What would be the sense of having an incomplete bomb?

The answer is followed to the hydrogen bomb must be a "thermonuclear" bomb. The hydrogen bomb will be a "thermonuclear" bomb.

There was a true bomb why it was not a complete success. What would be the sense of having an incomplete bomb?

The answer is followed to the hydrogen bomb must be a "thermonuclear" bomb. The hydrogen bomb will be a "thermonuclear" bomb.

There was a true bomb why it was not a complete success. What would be the sense of having an incomplete bomb?

The answer is followed to the hydrogen bomb must be a "thermonuclear" bomb. The hydrogen bomb will be a "thermonuclear" bomb.

There was a true bomb why it was not a complete success. What would be the sense of having an incomplete bomb?

The answer is followed to the hydrogen bomb must be a "thermonuclear" bomb. The hydrogen bomb will be a "thermonuclear" bomb.

There was a true bomb why it was not a complete success. What would be the sense of having an incomplete bomb?

The answer is followed to the hydrogen bomb must be a "thermonuclear" bomb. The hydrogen bomb will be a "thermonuclear" bomb.

There was a true bomb why it was not a complete success. What would be the sense of having an incomplete bomb?

The answer is followed to the hydrogen bomb must be a "thermonuclear" bomb. The hydrogen bomb will be a "thermonuclear" bomb.

There was a true bomb why it was not a complete success. What would be the sense of having an incomplete bomb?

The answer is followed to the hydrogen bomb must be a "thermonuclear" bomb. The hydrogen bomb will be a "thermonuclear" bomb.

There was a true bomb why it was not a complete success. What would be the sense of having an incomplete bomb?

The answer is followed to the hydrogen bomb must be a "thermonuclear" bomb. The hydrogen bomb will be a "thermonuclear" bomb.

There was a true bomb why it was not a complete success. What would be the sense of having an incomplete bomb?

The answer is followed to the hydrogen bomb must be a "thermonuclear" bomb. The hydrogen bomb will be a "thermonuclear" bomb.

There was a true bomb why it was not a complete success. What would be the sense of having an incomplete bomb?

The answer is followed to the hydrogen bomb must be a "thermonuclear" bomb. The hydrogen bomb will be a "thermonuclear" bomb.

There was a true bomb why it was not a complete success. What would be the sense of having an incomplete bomb?

The answer is followed to the hydrogen bomb must be a "thermonuclear" bomb. The hydrogen bomb will be a "thermonuclear" bomb.

There was a true bomb why it was not a complete success. What would be the sense of having an incomplete bomb?

The answer is followed to the hydrogen bomb must be a "thermonuclear" bomb. The hydrogen bomb will be a "thermonuclear" bomb.

There was a true bomb why it was not a complete success. What would be the sense of having an incomplete bomb?

The answer is followed to the hydrogen bomb must be a "thermonuclear" bomb. The hydrogen bomb will be a "thermonuclear" bomb.

There was a true bomb why it was not a complete success. What would be the sense of having an incomplete bomb?

The answer is followed to the hydrogen bomb must be a "thermonuclear" bomb. The hydrogen bomb will be a "thermonuclear" bomb.

There was a true bomb why it was not a complete success. What would be the sense of having an incomplete bomb?

The answer is followed to the hydrogen bomb must be a "thermonuclear" bomb. The hydrogen bomb will be a "thermonuclear" bomb.

There was a true bomb why it was not a complete success. What would be the sense of having an incomplete bomb?

The answer is followed to the hydrogen bomb must be a "thermonuclear" bomb. The hydrogen bomb will be a "thermonuclear" bomb.

There was a true bomb why it was not a complete success. What would be the sense of having an incomplete bomb?

The answer is followed to the hydrogen bomb must be a "thermonuclear" bomb. The hydrogen bomb will be a "thermonuclear" bomb.

There was a true bomb why it was not a complete success. What would be the sense of having an incomplete bomb?

The answer is followed to the hydrogen bomb must be a "thermonuclear" bomb. The hydrogen bomb will be a "thermonuclear" bomb.

on Cherokee test in Operation Redwing.

The forthcoming Cherokee shot incidentally is not expected to develop nearly as much radioactive fallout as former hydrogen blasts here because its fuelball will not be allowed to touch Namu, the target island, nor the surface of the sea to suck up dust, coral and water into the cloud.

## BULLETIN

ENVIETOK, May 10 — The Joint Task Force went on official "D minus one" status this morning after weathermen announced "sufficient possibility of acceptable conditions" Friday for the giant Cherokee hydrogen blast.

The announcement whipped into high gear all the last-minute preparations for the air detonation over Namu Island in the Bikini Atoll 180 miles east of here, with the shot scheduled 45 minutes before sunrise.

Navy and Air Force Task Groups are hurrying through their final duties.

Technical equipment is being given a last thorough check by skeleton crews which will be taken aboard ships off the Bikini Islands before nightfall to complete the evacuation of the Atoll except for scientists at the Enyu control point. Patrol planes are criss-crossing the far-flung danger area looking for stray ships and scientists are going through the intricacies of final bomb loading and switch checking.

The hydrogen bomb with its quiescent power equal to five million to ten million tons of TNT presumably is on Enviatok a mile off our starboard side waiting to be loaded aboard the eight-jet stratofort at 6 p.m. for the bomb flight that will begin at 3 a.m.

Nearest persons to the blast will be Dr. Gerdien Felt, deputy commander of the scientific task group, and his associates in the earth-covered Enyu control bunker 20 miles from ground zero.

Rabbits and monkeys to be subjected to the incandescence of the shot in flash blindness studies also are being readied in pens on Enyu.

The USS Mt. McKinley naval communications ship, an official observer station for 15 news pool correspondents and a small group of civil defense representatives, has just upped anchor and is heading over the long Pacific toward Bikini Atoll where she will take up position 32 miles from ground zero.

Newsman aboard are pouring over scientific manuals and fighting to remember college algebra and high school geometry in preparation for judging the size of the mammoth fireball and thus gauging its power yield, for no official information on the yield will be given us.

A tense atmosphere is slowly rising aboard ship, a tension that will build to a climax about 6 a.m. tomorrow when the falling bomb will blast its vast and venomous power over Bikini Lagoon where mighty navy ships, including the carrier Saratoga, lie in dim darkness on the ocean floor, victims of an underwater atomic blast in 1946.

Yet task force officials are being extremely careful and will not allow detonation unless rich weather conditions are met for they are very much aware of the political, military and diplomatic ramifications involved.

With yield estimate rising in accordance with filtering snowfall reports in the test area, it is now estimated that the bomb will be detonated anywhere from 5,000 to 10,000 feet above the island.

Yet not until the detonation is triggered will veteran newsmen board the USS Mt. McKinley because it having waited through long delays for atomic shots at Nevada proving sites and through these postponements so far here.

One tiny ship cruising slowly through the outer portion of the 75,000 nautical square mile danger area could again delay the shot, for Cherokee will not go until the area is clear, the weather right, the technical systems are all functioning, the vast support program is ready and the task force and all islanders safeguarded.

## 'Unwanted'

### Ousted Red Diplomat Sails Home

NEW YORK (AP) — One of two expelled Russian diplomats sailed for home Wednesday after a gay shipboard party.

Alexander K. Guryanov, 36, entertained a score of Russians in his cabin class stateroom before the Queen Mary sailed.

Nikolai F. Turkin, a third secretary in the Soviet U.N. delegation, also was expelled, but was back in Russia at the time of the U.S. action.

Guryanov and Turkin were ordered to leave for their part in helping persuade five Russian seamen to return to the Soviet Union. The five had been granted asylum here but flew back to Russia April 7.

The State Department accused the two diplomats of exceeding the scope of their official capacity.

EXCHANGING CHANGE

ROCHESTER, Minn. (AP) — Margaret Frisbie, Rochester, quit her job as a Maxco Clinic medical secretary and rode her Arabian steed some 1,800 miles to Arizona to get a job around horses. She finally landed a job in Tucson as a medical secretary.

LOOKING FOR A RIDE HOME THIS WEEKEND? Check CAMPUS CLASSIFIEDS

## Rush Smoker



Students discuss campus problems at a Student Government rush smoker held Wednesday night.

## George Quits Race For Senate

May Accept Post To Expand NATO

WASHINGTON (AP) — Veteran Walter George of Georgia, the Senate's dean with more than 33 years of service, bowed out of the race for re-nomination Wednesday.

The 78-year-old head of the Senate Foreign Relations Committee and Democratic spokesman in Congress on foreign policy indicated willingness to accept next January an offer by President Eisenhower to name him as personal ambassador to the North Atlantic Treaty Organization.

In that post he would have a major role in tentative planning, now under way, to expand the NATO military alliance to cope with political, and possibly economic, problems.

A little sadly, George announced that he will not run again "for good and sufficient reasons which I will not elaborate."

A mile away Eisenhower was telling his own news conference that George was one of the "wisest and most disinterested" of men "in his efforts to promote peace and bipartisanship in international affairs."

Eisenhower's offer was regarded in some quarters as paralleling the action of his Democratic predecessors in bringing opposing party members into the administration. The offer to George, however, was the first of its kind since Eisenhower became president.

George had counseled against involving the basic principles of foreign policy in this year's political campaign. However, he had said there is room for "constructive criticism" of the administration's policies.

## Rebels Hit 46 Villages, Military Posts in Algiers

ALGERS, Algeria (AP) — Rebels smashed at 46 villages and military posts in eastern Algeria in a bloody concerted attack, French authorities announced Wednesday night. First reports said at least 14 persons were killed.

The rebels used submachine guns, grenades and other weapons in the assaults that began Tuesday afternoon and continued in the night.

Rebel losses were described as heavy. The attacks were officially described as an important rebel push.

First reports from the battle area north of Constantine were sketchy but indicated the attacks were simultaneous and large scale.

The attacks came shortly before France ordered 30,000 more troops sent to Algeria to combat the rebellion. They apparently followed the same pattern as attacks earlier this week in western Algeria where about 40 farms were razed and 20 Europeans killed.

The government in Paris heeded the call of Resident Minister Robert Lacoste for reinforcements after tomato-throwing French students stormed through the streets of Algiers demanding sterner measures to crush the uprising.

A contingent of 20,000 troops will be called up immediately.

**VanDervoort's**

FOR EVERYTHING IN SPORTS

Across from the Union in East Lansing

Marilou Mausteller for Junior Treasurer \$ \$ \$

Two Smart Womens Apparel Shops . . . Frandor Center & 228 So. Washington downtown

## Very Important Announcement!

**Greens** Have been selected to be the official headquarters for

## 'Miss America 1956 Contest'

Both stores, Frandor and Downtown, have the official entry blanks for entering the preliminary "Miss Lansing" — to "Miss Michigan" — to "Miss America" contest for 1956.

P.S.—This beauty taking her siesta, is you, in the new "crinklepuff" Jantzen cotton swimsuit, from the "International Set" collection in our stores now.

priced 15.95

Frandor open Thurs. and Fri. 10:30-9:00 P.M.

**Greens**

## Cypriots Hanging Causes Riot Against U.S., Britain

ATHENS, Greece (AP) — Sympathy for two Greek Cypriot gunmen condemned to die on a British gallows boiled up here Wednesday in rioting against both Britain and the United States. Four persons were killed and 191 injured before troops and police restored order.

The rioting was Athens' worst since the 1944 Greek revolution. A mob shattered the windows in the U.S. Information Service office, dedicated to improvement of understanding among the Western Allies.

Angry Greeks fought police in an attempt to break into the building, but finally were driven off by counterattacks, during which the police said they fired into the air. The office had closed for the day, and no Americans were injured there.

The rioters did not explain why they singled out the information center, but apparently stated the attack as a protest against the United States' refusal to support Greece's claim to Cyprus.

Hard on the heels of Wednesday's Athens mob action, a group of 1,000 tried to storm the British consulate in Salonika, Greece's second city, 190 miles northwest.

**PAIGE CRAFT**

vote

marylou BROWN for Senior Secretary

## PARENTS' WEEKEND

MAY 12-13

BRING YOUR PARENTS IN FOR A "COKE" (OR A MEAL)

College Inn Cafeteria BENEATH COLLEGE DRUGS

**SEARS**  
ROEBUCK AND CO.

EYE EXAMINATION  
GLASSES FITTED  
REPAIRS

SEARS EASY PAYMENT PLAN

WOW, WITH SEARS GLASSES YOU DON'T MISS A THING

OPTICAL DEPT. OFFICE of DR. J. CHRISTIE, Optometrist

**Greens** Have been selected to be the official headquarters for

**'Miss America 1956 Contest'**

Both stores, Frandor and Downtown, have the official entry blanks for entering the preliminary "Miss Lansing" — to "Miss Michigan" — to "Miss America" contest for 1956.

P.S.—This beauty taking her siesta, is you, in the new "crinklepuff" Jantzen cotton swimsuit, from the "International Set" collection in our stores now.

priced 15.95

Frandor open Thurs. and Fri. 10:30-9:00 P.M.

**Greens**



## Life Can Be

ALEXANDRIA, Minn. (AP)—Three men charged out of the darkened liquor store, pistols blazing. Deputy Sheriff How-

**UNDER NEW MANAGEMENT**  
**VARSITY DRIVE IN**  
1 block East of E. Lansing on U.S. 16  
Now Featuring The  
Foot Long Hot Dogs—35c

Bring Mom & Dad to the  
Green Splash Water Show

**—DISNEYLAND—**

May 10-11-12

1.00 & 1.25

Tickets at Union Desk



The man wears

**Catalina®**

SANDPIPER

\$3.95

ALSO

BUD BERMA  
SWIM WEAR

\$2.95 up

CLOTHES FOR  
GENTLEMEN

**Ramsey's**  
MEAT SHOP

E. GRAND RIVER  
AND MAC

Exposition to Feature  
Guided Missile 'Nike'

The guided missile "Nike" will be the featured display of the Engineering Exposition to be held Friday and Saturday. Nike will be sponsored by the 5th Army and will be displayed in the parking lot in front of Olds hall. This will be the missile's second appearance in Michigan.

The display will include a control panel which assimilates a night air attack and shows how Nike would operate.

It takes three three-ton trucks with trailers, three 3-ton trucks and two five-ton wreckers with cranes to transport and erect the missile. One part weighs from 8-10 tons.

The "Kiss O'Meter," an invention by Bruce MacDonald, Manistique senior, will be among the student exhibits. Two people hold on to wires connected to a thermometer-type meter which measures skin conductivity. If the conductivity is high enough when they kiss a bell rings.

Richard Herrick, Lapeer senior, will demonstrate burning paper with steam. A boiler heats the steam to 800 degrees F. and is then used to ignite paper.

Windows which open automatically when it gets warm and close when it rains or gets cold will be displayed by Gilbert LeVina, Lansing senior.

He has also invented an automatic switch for home appliances. A telephone call home

will automatically turn off all appliances.

"Bridges are Beautiful," a 40-panel display, will be shown by the American Institute of Steel Construction. The pictures show bridges from different parts of the world.

The American Museum of Atomic Energy will present a "Summary of Atomic Energy" with pictures illustrating the history of atomic energy. Also, a technical exhibit designed for the layman will be shown.

Superior Student,  
Hinman Deadline Set

Deadline for application for Superior Student and Hinman scholarships for next school year is Friday at 5 p.m. Interviews with the applicants will be held in the following three weeks.

The number of U.S. telephone operators has increased by 159,000 or 79 per cent from 1940 to 1950.

Only 19 of America's 100 largest cities depend on wells for a public water supply.

## Speak To Mom Of Love!



Paigecraft gifts speak for themselves and speak for you. Wishing Mom the best on her day, Sunday, May 13. Everywhere in the store you'll find a new world of ideas. Hostess and cobbler aprons, luncheon and place-mat sets, Patience, travel-kits, and glassware. Salad sets, bowls and shrimp sets. We will gift-wrap your selections and wrap them for mailing, too.

**GIFTS OF DISTINCTION**  
**Paigecraft**

222 ABBOTT ROAD, EAST LANSING — ED 2-6892

## Sports Clinic



Athletic Director Biggie Munn speaks to the 350 persons who attended the Sports Clinic. Seated are J. Robert Stewart, scholarship director and Burt Smith, ass't. line coach. Proceeds of the clinic, sponsored by the Veterans Association, will go to Campus Chest.

U. S. Chemist Admits  
Giving Aid to Russians

WASHINGTON (AP)—An American chemist was quoted as telling the Senate Internal Security subcommittee Wednesday that he had supplied technical industrial information to the Russians from 1933 until 1940.

Robert Morris, chief counsel for the committee, said the witness gave this testimony to the investigators in executive session. "In following up testimony of Harry Gold," Morris said, "we subpoenaed various people. The witness was subpoenaed Wednesday and answered questions apparently with great candor and directness."

Gold, convicted of espionage six years ago, testified before the subcommittee last month. Morris said the chemist told the Senate probes he first worked with the Russians in 1933.

"He said his contact at that time was with a man under cover of the Amtorg Trading Corp.—a name that has come out frequently in our hearings," Morris said.

"Then in 1937, he changed to another contact with the cover of the Soviet Red Cross," Morris added.

"He said he worked for the Russians until 1940. His contacts through the 1940s were spotty," Morris said, "and his last contact was in 1950."

STORE HOURS  
9:30 a.m. 5:30 p.m.

**MARJORIE**  
**DEE**

ACROSS FROM  
UNIVERSITY  
HOSPITAL

Last Call for Mother's Day  
This Sunday

5 pc. Table Cloth Sets

53x53 size cloth with 4 napkins \$5.98

California styled—Pasadena cloth

Guaranteed washable

53x72 size cloth with 4 napkins \$7.98

WE WILL MAIL WRAP FREE

Security Revision  
Announced by AECNew Regulations to Establish  
Case Reconsidering Standards

WASHINGTON (AP)—The Atomic Energy Commission announced Wednesday it has revised its loyalty procedures to allow persons accused of being security risks to confront their accusers "if possible."

A new set of regulations which go into effect today also establishes standards for reconsideration of cases in which security clearance has previously been granted or denied.

In many government security cases in recent years employees have protested they were denied an opportunity to confront the persons who furnished derogatory information about them. In some cases they were not even told the identity of the accuser.

The new AEC regulations provide for confrontation whenever possible and generally appear to give persons entangled in security cases a better chance to defend themselves.

They state that "when a hear-

ing board determines the necessity of a witness is immaterial, the resolution of material issues the board shall require appropriate commission officials to arrange, if possible, for the witness to appear and be examined and cross-examined."

Another principal difference between the old and new regulations is a provision for the appointment of legal counsel to the hearing boards. "Where function it will be to develop all information, favorable and unfavorable, bearing upon an individual's eligibility for clearance."

The changes are being made by the AEC, in the light of eight years of experience in the field of personnel security clearance and with the advice of a number of representatives of the scientific community.

Model T  
Committee  
Plans Marker  
For First Ford

A historical marker will be placed on the spot where the first "Model T" Ford came off the assembly line.

Dr. Lewis Beeson, executive secretary of the state historical commission, said the marker will be dedicated May 26 at the Highland Park Ford Plant.

The marker will read: "Here, at the Highland Park Plant, Henry Ford in 1913 began the mass production of automobiles. By 1915 Ford had built a million Model T's. In 1925, over 9,000 were assembled in a single day. Mass production was moved from here to all phases of American industry and set the pattern of abundance for 20th century living."

The Big Dipper and the Southern Cross can be seen at the same time from the Virgin Islands at certain times of the year.

Marilou Mausteller  
for  
Junior Treasurer

S S S

3 Federal Teams  
Inspect Air Force,  
Army Drill Corps

Both of MSU's ROTC units were stepping lively Wednesday under the watchful eyes of federal inspection teams.

AFTOC units are inspected by two teams. One team, USAF Headquarters in Washington, D.C., consists of Col. R. F. Ritzberger and Lt. Col. Thomas Simpson.

The other is from AFHQ Headquarters in Montgomery, Ala., and is headed by Col. William Mulligan with Lt. Col. L. L. Long and Lt. Col. R. F. O'Connell. The Army ROTC units are inspected by a federal inspection team from other universities in the area, which includes the Big 10.

The team, which left Wednesday, was headed by Col. J. D. Dietel, of the University of Nebraska.

The other team members are Lt. Col. Percy Lisk, Jr., of the College in Illinois, and Lt. Col. Walter Granrud, of the University of Missouri.

Students to Attend  
Banquet May 22

The Student Publications Banquet is being held this year on May 22. All persons who have worked on a student publication in the past year are invited to attend.

Reservations should be made by the respective publication immediately.

"We're Sailing Along" theme of this year's banquet dinner will be followed by a put on by all publications.

## hungry?



## FREE DELIVERY

For those delicious snacks that give that satisfied feeling, call the Famous Grill for FREE delivery. Your choice of a wide selection of sandwiches, soups, beverages, salads... anything you want. Dial IV 5-7516 so we can deliver before 10 P.M.

"Chicken-in-the-Rough"  
Tasty Sandwiches  
Salads  
Chicken by the "TUB-FULL"

CALL IV 5-7516

**The FAMOUS Grill**  
E. Michigan at Larch

## You Will

## Dance thru Spring Term

Marilyn Pearce and Carol Kashenider, both of Zeta Tau Alpha sorority, have selected polished cotton formals for spring term dances. Marilyn, Grosse Pointe accounting major (seated), is wearing a white dress which is embroidered with black scallops. It has the new long torso waist line with a full skirt and tiny shoelace straps.

Carol, Lansing education major, has selected a rose strewn formal with a basque waist and a very flared skirt. The off-shoulder, V-neck is accented with olive green velvet ribbon which ties in a bow at the back.

You will look like a dream dancing thru spring term in a formal from the Lansing Style Shop. Make your selection from the wide variety of colors, fabrics, styles and sizes.

Both dresses pictured are \$29.95 and come in sizes 7 to 15.

Store Hours: Monday 9:30 to 9 p.m.

Tuesday thru Saturday 9:30 to 5:30



116 W. Allegan

Lansing

**The Style Shop**

**SEARS**  
ROEBUCK AND CO.

## SPRING — AUTOMOTIVE VALUES

An Economy Buy at Regular Prices — Now Priced Even Lower!

## ALLSTATE COMPANION

Reg. No Trade-In Price 16.95 Each

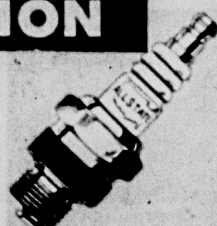
NOW Trade-In Priced As Low As

**1288**

6.70 x 15  
each, plus tax

AND YOUR OLD TIRE

- Long-wearing X-41 Cold Rubber
- Bonded rayon cord, to resist heat, cushion road shock and impacts
- Sure-footed traction-grip tread
- Guarantee honored coast to coast
- Similar low prices on other sizes

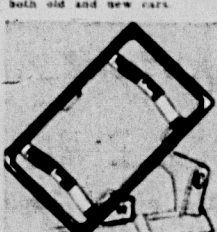


Allstate Plugs

Have Maximum Sparking Area

Sale price ea. 33¢ each

Allstate spark plugs have an extra wide heat range, high electrical resistance. Best for both old and new cars.



License Frames

Only 2.49

Keep Plates Looking New! Three handsome frames add distinction and beauty to any car. Heat proof and strong. Triple chrome plate.



Guard Your Engine with  
ALLSTATE HEAVY Duty

## MOTOR OIL

Cleans, protects, lubricates. Keeps piston rings free of sludge, wearing varnish. Helps keep your car engine running at its best. Stock up now!

**288**

## FIBER SEAT COVERS

- Keeps upholstery new; increases car's value
- Exceptionally tough, high ALLSTATE quality
- Guaranteed to satisfy or your money back
- Can be purchased on Sears Revolving Charge

Sizes To Fit Most Cars  
Beautiful Harmonizing  
Colors



FIBER

Choose from maroon, green or blue. Durable long lasting fiber and plastic trim.

as low as **1288**

**SEARS**

Free Parking in  
East Lansing  
PHONE 7-7321

Open Mon.  
Thurs., Fri. 9 a.m.  
Nights 'Til



# Despite Rain Spirit of Troupers Shown at Concert

By JERRY JENNINGS  
State News Feature Editor

Weatherman proved he was no music-lover at the Concert Band's first spring-term performance last night.

Thunderstorms prevented the concert from being held at the Band Shell, so the band moved to the gymnasium. As a result, a few hundred persons attended.

The concert was marked by a somewhat sluggish tempo in parts.

Paul Grisebke, Fort Wayne, Ind., sonhomore, demonstrated clear tone and a polished skill in his clarinet solo, Morrissey's "Interlude."

Other numbers included "Allegro scelerato" by Richard Strauss; "A Pair," a novelty number from "The Poker Deck Ballet," Jovous Interlude," a number with Oriental overtones, and Cuban Fantasy," a three-part number dominated by the rumba and other Latin-American rhythms.

The concert closed with a smooth, although slightly subdued, presentation of Mendelssohn's "Ray Blas" overture.

The band sections at the concert were in fine balance and comparable to the best of the state.

The clear, sustaining sound of the woodwinds was particularly effective in the solo parts.

The concert was done in a very professional manner.

The band was a fairly new organization, and the concert was a very successful one.

The band played the concert with great precision, and the concert was a very successful one.

The band was a fairly new organization, and the concert was a very successful one.

The band played the concert with great precision, and the concert was a very successful one.

The band was a fairly new organization, and the concert was a very successful one.

The band played the concert with great precision, and the concert was a very successful one.

The band was a fairly new organization, and the concert was a very successful one.

The band played the concert with great precision, and the concert was a very successful one.

The band was a fairly new organization, and the concert was a very successful one.

The band played the concert with great precision, and the concert was a very successful one.

The band was a fairly new organization, and the concert was a very successful one.

The band played the concert with great precision, and the concert was a very successful one.

The band was a fairly new organization, and the concert was a very successful one.

The band played the concert with great precision, and the concert was a very successful one.

The band was a fairly new organization, and the concert was a very successful one.

The band played the concert with great precision, and the concert was a very successful one.

The band was a fairly new organization, and the concert was a very successful one.

The band played the concert with great precision, and the concert was a very successful one.

The band was a fairly new organization, and the concert was a very successful one.

The band played the concert with great precision, and the concert was a very successful one.

The band was a fairly new organization, and the concert was a very successful one.

The band played the concert with great precision, and the concert was a very successful one.

The band was a fairly new organization, and the concert was a very successful one.

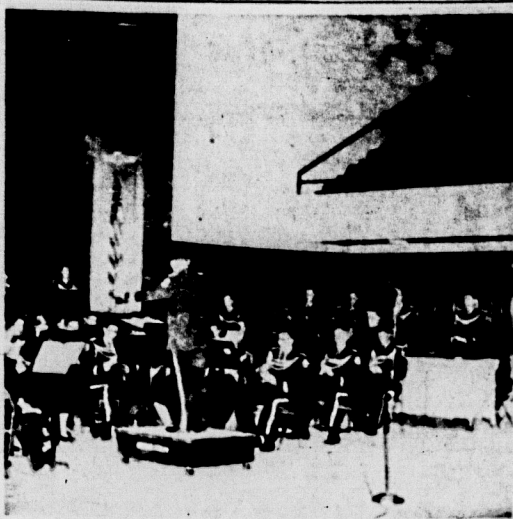
The band played the concert with great precision, and the concert was a very successful one.

The band was a fairly new organization, and the concert was a very successful one.

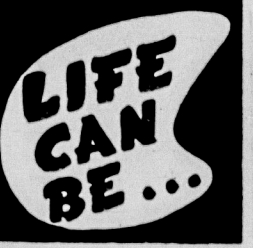
The band played the concert with great precision, and the concert was a very successful one.

The band was a fairly new organization, and the concert was a very successful one.

The band played the concert with great precision, and the concert was a very successful one.



The Concert Band presents the first band concert of the season, in the Aud instead of the bandshell because of rain.



## Congress

(Continued from Page 1)

Charters were granted to Knights of St. Patrick, engineering extra-curricular activities club, and Gamma Iota Mu, institutional management organization.

No new bills were introduced. Mansfield said he anticipated the U. S. Olympic Fund raising campaign to reach 10-15 thousand dollars.

Speaker Diane Doersner announced the annual All-University Student Government Banquet will be held May 17, Union Green Room at 6:30. The new Congress, judiciary and executive personnel as well as the present Congress are invited. Tickets are \$1.75. Reservations must be in the student government office by Monday.

Gueden Concert To End Series

Soprano Hilda Gueden will appear here Feb. 11 to complete the 1956-57 Lecture-Concert Series, according to Stanley E. Crowe, dean of the series.

Miss Gueden is currently singing with the Metropolitan Opera Company. She recently made an appearance at the May Festival.

FUN IN FILM

JACKSON, Wyo. (AP)—The 62-year-old man looked like a cowboy, so he was issued a six-shooter and cast as an extra. Only later, as he clambered before the cameras with 40 other cowboys during filming of a western was his identity revealed.

He is George Cross, owner of the Hugh Cross Ranch and a millionaire.

"I haven't had so much fun since my bronco riding days," he told friends.

Special Course for College Women

White College Dean for Girls Girls 17-18

KATHARINE GIBBS SECRETARIAL

Room 16, 21 Westwood St. New York 17, 730 Park Ave. Phone 6-1111

JOHN HICKS HARDWARE

201 E. GRAND RIVER AVE. EAST LANSING

JOHN HICKS HARDWARE

201 E. GRAND RIVER AVE. EAST LANSING

JOHN HICKS HARDWARE

201 E. GRAND RIVER AVE. EAST LANSING

JOHN HICKS HARDWARE

201 E. GRAND RIVER AVE. EAST LANSING

JOHN HICKS HARDWARE

201 E. GRAND RIVER AVE. EAST LANSING

JOHN HICKS HARDWARE

201 E. GRAND RIVER AVE. EAST LANSING

JOHN HICKS HARDWARE

201 E. GRAND RIVER AVE. EAST LANSING

JOHN HICKS HARDWARE

201 E. GRAND RIVER AVE. EAST LANSING

JOHN HICKS HARDWARE

201 E. GRAND RIVER AVE. EAST LANSING

## Soil Bank

(Continued from Page 1)

ers, rice, barley and grain sorghums—at five parity points below the level of commercial corn.

This was conditioned upon taking part in the acreage reduction phase of the soil bank.

The Senate committee accepted this provision for next year's feed grain crop but it put in a new proposal for this year under which producers could ignore planting limits and still get support at about 75 per cent of parity.

Also accepted by the Senate group were these provisions that may curtail administration opposition.

An amendment by Sen. Young that would prevent possible drops of five per cent in support levels on wheat, corn and peanuts during the next two years.

A surprise plan for rice sponsored by Chairman Ellender, he said, but it is used it must be tried during two consecutive years of the next three.

An amendment by Sen. Eastland, Miss., that would direct the government to sell up to seven million bushels of surplus up, land on it owns at competitive prices. Previously agricultural department officials have offered this cotton with a floor under the prices to prevent larger losses.

An amendment by Sen. Johnston (D-S.C.) that would freeze cotton acreage allotments on a state as well as national basis during the next two years. The administration previously had gone along with the national freeze, but Johnston's proposal also would retain minimums for each state.

The committee, meeting in executive session, worked through a 32-page bill passed by the House to replace the farm legislation vetoed by the President April 16.

Stricken from the measure were House-approved provisions for soil bank payments on grazing land and field crops, and for a 50-million-dollar fund to pay benefits in these categories.

The House provisions had not been asked by the President or Secretary of Agriculture Benson, and some administration support-

ers said they might cause a second veto.

Two major issues remained to be decided before the committee sends the bill to the Senate floor.

One involves a House-approved provision requiring mandatory price supports for oats, barley, rye and grain sorghums, important livestock feed grains, pegged near the level of price supports on corn. Supports would be conditioned on reducing acreage under the soil bank program.

The other is Eisenhower's request for authority to make advance soil bank payments of up to 500 million dollars this year to farmers who sign up next year's crop reduction programs. The House refused to grant the authority.

Because most farmers already have planted this year's crops, or at least made their plans, few are expected to benefit in 1956 from the annual \$1,200,000,000 in payments for cutting back production.

The House provisions had not been asked by the President or Secretary of Agriculture Benson, and some administration support-

ers said they might cause a second veto.

Two major issues remained to be decided before the committee sends the bill to the Senate floor.

One involves a House-approved provision requiring mandatory price supports for oats, barley, rye and grain sorghums, important livestock feed grains, pegged near the level of price supports on corn. Supports would be conditioned on reducing acreage under the soil bank program.

The other is Eisenhower's request for authority to make advance soil bank payments of up to 500 million dollars this year to farmers who sign up next year's crop reduction programs. The House refused to grant the authority.

Because most farmers already have planted this year's crops, or at least made their plans, few are expected to benefit in 1956 from the annual \$1,200,000,000 in payments for cutting back production.

The House provisions had not been asked by the President or Secretary of Agriculture Benson, and some administration support-

ers said they might cause a second veto.

Two major issues remained to be decided before the committee sends the bill to the Senate floor.

One involves a House-approved provision requiring mandatory price supports for oats, barley, rye and grain sorghums, important livestock feed grains, pegged near the level of price supports on corn. Supports would be conditioned on reducing acreage under the soil bank program.

The other is Eisenhower's request for authority to make advance soil bank payments of up to 500 million dollars this year to farmers who sign up next year's crop reduction programs. The House refused to grant the authority.

Because most farmers already have planted this year's crops, or at least made their plans, few are expected to benefit in 1956 from the annual \$1,200,000,000 in payments for cutting back production.

The House provisions had not been asked by the President or Secretary of Agriculture Benson, and some administration support-

ers said they might cause a second veto.

Two major issues remained to be decided before the committee sends the bill to the Senate floor.

One involves a House-approved provision requiring mandatory price supports for oats, barley, rye and grain sorghums, important livestock feed grains, pegged near the level of price supports on corn. Supports would be conditioned on reducing acreage under the soil bank program.

The other is Eisenhower's request for authority to make advance soil bank payments of up to 500 million dollars this year to farmers who sign up next year's crop reduction programs. The House refused to grant the authority.

Because most farmers already have planted this year's crops, or at least made their plans, few are expected to benefit in 1956 from the annual \$1,200,000,000 in payments for cutting back production.

The House provisions had not been asked by the President or Secretary of Agriculture Benson, and some administration support-

ers said they might cause a second veto.

Two major issues remained to be decided before the committee sends the bill to the Senate floor.

One involves a House-approved provision requiring mandatory price supports for oats, barley, rye and grain sorghums, important livestock feed grains, pegged near the level of price supports on corn. Supports would be conditioned on reducing acreage under the soil bank program.

The other is Eisenhower's request for authority to make advance soil bank payments of up to 500 million dollars this year to farmers who sign up next year's crop reduction programs. The House refused to grant the authority.

Because most farmers already have planted this year's crops, or at least made their plans, few are expected to benefit in 1956 from the annual \$1,200,000,000 in payments for cutting back production.

The House provisions had not been asked by the President or Secretary of Agriculture Benson, and some administration support-

ers said they might cause a second veto.

Two major issues remained to be decided before the committee sends the bill to the Senate floor.

One involves a House-approved provision requiring mandatory price supports for oats, barley, rye and grain sorghums, important livestock feed grains, pegged near the level of price supports on corn. Supports would be conditioned on reducing acreage under the soil bank program.

The other is Eisenhower's request for authority to make advance soil bank payments of up to 500 million dollars this year to farmers who sign up next year's crop reduction programs. The House refused to grant the authority.

## Phi Delts Raise Bid for Hannah

(Continued from Page 1)

ers said they might cause a second veto.

Two major issues remained to be decided before the committee sends the bill to the Senate floor.

One involves a House-approved provision requiring mandatory price supports for oats, barley, rye and grain sorghums, important livestock feed grains, pegged near the level of price supports on corn. Supports would be conditioned on reducing acreage under the soil bank program.

The other is Eisenhower's request for authority to make advance soil bank payments of up to 500 million dollars this year to farmers who sign up next year's crop reduction programs. The House refused to grant the authority.

Because most farmers already have planted this year's crops, or at least made their plans, few are expected to benefit in 1956 from the annual \$1,200,000,000 in payments for cutting back production.

The House provisions had not been asked by the President or Secretary of Agriculture Benson, and some administration support-

ers said they might cause a second veto.

Two major issues remained to be decided before the committee sends the bill to the Senate floor.

One involves a House-approved provision requiring mandatory price supports for oats, barley, rye and grain sorghums, important livestock feed grains, pegged near the level of price supports on corn. Supports would be conditioned on reducing acreage under the soil bank program.

The other is Eisenhower's request for authority to make advance soil bank payments of up to 500 million dollars this year to farmers who sign up next year's crop reduction programs. The House refused to grant the authority.

Because most farmers already have planted this year's crops, or at least made their plans, few are expected to benefit in 1956 from the annual \$1,200,000,000 in payments for cutting back production.

The House provisions had not been asked by the President or Secretary of Agriculture Benson, and some administration support-

ers said they might cause a second veto.

Two major issues remained to be decided before the committee sends the bill to the Senate floor.

One involves a House-approved provision requiring mandatory price supports for oats, barley, rye and grain sorghums, important livestock feed grains, pegged near the level of price supports on corn. Supports would be conditioned on reducing acreage under the soil bank program.

The other is Eisenhower's request for authority to make advance soil bank payments of up to 500 million dollars this year to farmers who sign up next year's crop reduction programs. The House refused to grant the authority.

Because most farmers already have planted this year's crops, or at least made their plans, few are expected to benefit in 1956 from the annual \$1,200,000,000 in payments for cutting back production.

The House provisions had not been asked by the President or Secretary of Agriculture Benson, and some administration support-

ers said they might cause a second veto.

Two major issues remained to be decided before the committee sends the bill to the Senate floor.

One involves a House-approved provision requiring mandatory price supports for oats, barley, rye and grain sorghums, important livestock feed grains, pegged near the level of price supports on corn. Supports would be conditioned on reducing acreage under the soil bank program.

The other is Eisenhower's request for authority to make advance soil bank payments of up to 500 million dollars this year to farmers who sign up next year's crop reduction programs. The House refused to grant the authority.

Because most farmers already have planted this year's crops, or at least made their plans, few are expected to benefit in 1956 from the annual \$1,200,000,000 in payments for cutting back production.

The House provisions had not been asked by the President or Secretary of Agriculture Benson, and some administration support-

ers said they might cause a second veto.

Two major issues remained to be decided before the committee sends the bill to the Senate floor.

One involves a House-approved provision requiring mandatory price supports for oats, barley, rye and grain sorghums, important livestock feed grains, pegged near the level of price supports on corn. Supports would be conditioned on reducing acreage under the soil bank program.

The other is Eisenhower's request for authority to make advance soil bank payments of up to 500 million dollars this year to farmers who sign up next year's crop reduction programs. The House refused to grant the authority.

Because most farmers already have planted this year's crops, or at least made their plans, few are expected to benefit in 1956 from the annual \$1,200,000,000 in payments for cutting back production.

The House provisions had not been asked by the President or Secretary of Agriculture Benson, and some administration support-

ers said they might cause a second veto.

Two major issues remained to be decided before the committee sends the bill to the Senate floor.

One involves a House-approved provision requiring mandatory price supports for oats, barley, rye and grain sorghums, important livestock feed grains, pegged near the level of price supports on corn. Supports would be conditioned on reducing acreage under the soil bank program.

The other is Eisenhower's request for authority to make advance soil bank payments of up to 500 million dollars this year to farmers who sign up next year's crop reduction programs. The House refused to grant the authority.

Because most farmers already have planted this year's crops, or at least made their plans, few are expected to benefit in 1956 from the annual \$1,200,000,000 in payments for cutting back production.

The House provisions had not been asked by the President or Secretary of Agriculture Benson, and some administration support-

ers said they might cause a second veto.

Two major issues remained to be decided before the committee sends the bill to the Senate floor.

One involves a House-approved provision requiring mandatory price supports for oats, barley, rye and grain sorghums, important livestock feed grains, pegged near the level of price supports on corn. Supports would be conditioned on reducing acreage under the soil bank program.

The other is Eisenhower's request for authority to make advance soil bank payments of up to 500 million dollars this year to farmers who sign up next year's crop reduction programs. The House refused to grant the authority.

Because most farmers already have planted this year's crops, or at least made their plans, few are expected to benefit in 1956 from the annual \$1,200,000,000 in payments for cutting back production.

The House provisions had not been asked by the President or Secretary of Agriculture Benson, and some administration support-

ers said they might cause a second veto.

Two major issues remained to be decided before the committee sends the bill to the Senate floor.

One involves a House-approved provision requiring mandatory price supports for oats, barley, rye and grain sorghums, important livestock feed grains, pegged near the level of price supports on corn. Supports would be conditioned on reducing acreage under the soil bank program.

## Phi Delts Raise Bid for Hannah

(Continued from Page 1)

ers said they might cause a second veto.

Two major issues remained to be decided before the committee sends the bill to the Senate floor.

One involves a House-approved provision requiring mandatory price supports for oats, barley, rye and grain sorghums, important livestock feed grains, pegged near the level of price supports on corn. Supports would be conditioned on reducing acreage under the soil bank program.

The other is Eisenhower's request for authority to make advance soil bank payments of up to 500 million dollars this year to farmers who sign up next year's crop reduction programs. The House refused to grant the authority.

Because most farmers already have planted this year's crops, or at least made their plans, few are expected to benefit in 1956 from the annual \$1,200,000,000 in payments for cutting back production.

The House provisions had not been asked by the President or Secretary of Agriculture Benson, and some administration support-

ers said they might cause a second veto.

Two major issues remained to be decided before the committee sends the bill to the Senate floor.

One involves a House-approved provision requiring mandatory price supports for oats, barley, rye and grain sorghums, important livestock feed grains, pegged near the level of price supports on corn. Supports would be conditioned on reducing acreage under the soil bank program.

The other is Eisenhower's request for authority to make advance soil bank payments of up to 500 million dollars this year to farmers who sign up next year's crop reduction programs. The House refused to grant the authority.

Because most farmers already have planted this year's crops, or at least made their plans, few are expected to benefit in 1956 from the annual \$1,200,000,000 in payments for cutting back production.

The House provisions had not been asked by the President or Secretary of Agriculture Benson, and some administration support-

ers said they might cause a second veto.

Two major issues remained to be decided before the committee sends the bill to the Senate floor.

One involves a House-approved provision requiring mandatory price supports for oats, barley, rye and grain sorghums, important livestock feed grains, pegged near the level of price supports on corn. Supports would be conditioned on reducing acreage under the soil bank program.

The other is Eisenhower's request for authority to make advance soil bank payments of up to 500 million dollars this year to farmers who sign up next year's crop reduction programs. The House refused to grant the authority.

Because most farmers already have planted this year's crops, or at least made their plans, few are expected to benefit in 1956 from the annual \$1,200,000,000 in payments for cutting back production.

The House provisions had not been asked by the President or Secretary of Agriculture Benson, and some administration support-

ers said they might cause a second veto.

Two major issues remained to be decided before the committee sends the bill to the Senate floor.

One involves a House-approved provision requiring mandatory price supports for oats, barley, rye and grain sorghums, important livestock feed grains, pegged near the level of price supports on corn. Supports would be conditioned on reducing acreage under the soil bank program.

The other is Eisenhower's request for authority to make advance soil bank payments of up to 500 million dollars this year to farmers who sign up next year's crop reduction programs. The House refused to grant the authority.

Because most farmers already have planted this year's crops, or at least made their plans, few are expected to benefit in 1956 from the annual \$1,200,000,000 in payments for cutting back production.

The House provisions had not been asked by the President or Secretary of Agriculture Benson, and some administration support-



## Baker Decisions Holman

MIAMI BEACH, Fla. (AP)—Big Bob Baker drew first blood in the scramble for the vacant heavyweight throne Wednesday night as he stabbed his way to a unanimous 12-round decision over John Holman in the Miami Beach Auditorium.

**BIG BILL BOPE  
FOR  
JR. PRESIDENT**

**DANCE TONIGHT  
Lansing YWCA**

217 Townsend

**Bill Street - Jim Voorheis' Band**

9-12 P.M.

75c per person

### Ivy Shirts

Conservative Stripes  
Clan Plaids

\$3.95

### Bermudas

Cotton Chino, Cotton Cords  
Stripes

\$4.95

**Two Legs, Inc. 213 Grand River**



## Golfers Beat Wisconsin, Display Close Balance

By FRID MERRILL

The Michigan State golf team downed Wisconsin, 20-7, Monday at Madison, Wisconsin.

Coach Ben Van Alstyne called the match "the best day of the year," as the Spartans showed surprising balance. Only two strokes separated the No. 1 and No. 6 man on the team.

The win gave the Spartans two wins for three tries in regular season competition and left Wisconsin with a 5-3 record.

Arlin Dell and Otto Schubert turned in the best performance for MSU with a 62 in the morning action.

Badger Co-Captain Roger Rubendall topped the afternoon singles with a two under par

70, the only score below par in the singles.

Rubendall, who won the Western Conference Individual Championship last year, has broken par for Maple Hills golf course, where the match was played, in four out of his last five attempts.

Ken Rodevald, Schubert and George Walsky shot the lowest MSU singles games with 74 strokes each.

The Spartans gained most of their points in the best ball doubles play, where they collected 6 to the Badgers one. The score in the singles was 12-6.

### IM Results

**Volleyball**  
Blacks Blanks def. States, 15-5, 9-13, 15-10.  
Odd Balls def. W. State, 15-6, 15-8, 15-10.  
Aces def. E. State, 15-6, 15-8, 15-11.  
Clowns def. Asher, 15-6, 15-7.  
**Softball**  
All games postponed, rain.  
**Tennis**  
All games postponed, rain.

### WEBB

COVERS

THE

CAMPUS

...

JR.

**VICE PRESIDENT**

## Major League Standings

AMERICAN LEAGUE					NATIONAL LEAGUE				
	W	L	Pct.	GB		W	L	Pct.	GB
New York	14	6	.700	—	Milwaukee	8	3	.727	1
Poston	10	7	.588	2½	St. Louis	12	6	.684	—
Cleveland	10	8	.556	3	Cincinnati	12	7	.632	1
Baltimore	10	12	.455	5	Brooklyn	9	9	.500	3½
Kansas City	8	10	.444	5	New York	9	10	.474	4
Chicago	6	8	.429	5	Pittsburgh	8	10	.444	4½
Washington	9	12	.429	5½	Philadelphia	5	12	.294	7
DETROIT	8	12	.400	6	Chicago	4	11	.264	7

### WEDNESDAY'S RESULTS

DETROIT 1, Washington 1  
Boston 1, Chicago 1  
Cleveland 6, New York 5  
Kansas City 4, Baltimore 0

### TODAY'S GAMES

DETROIT at Washington  
Kansas City at Baltimore  
Cleveland at New York  
Chicago at Boston

### WEDNESDAY'S RESULTS

St. Louis 3, Philadelphia 0  
Cincinnati 6, New York 5  
Pittsburgh 2, Chicago 0  
Pittsburgh at Milwaukee postponed, rain

### TODAY'S GAMES

Brooklyn at Chicago  
Only game scheduled.

## 'Slammer' Still Feared at 44

WHITE SULPHUR SPRINGS, W. Va. (AP)—As usual, whether he's rusty or old, most eyes will be on Sam Snead at the start of the four-day White Sulphur Open Golf Tournament today.

Despite his 44 years and infrequent competitive appearances, Snead still is one of the most feared at White Sulphur, his home course.

The Slammer, who grew up and started knocking golf balls right in these mountains, also won in 1951 and 1953. He had his hands on a fourth straight in 1954, but lost in a playoff to Herman Scharlau, who also is competing again.

He has proved it by winning three of the eight past tournaments and finishing runner-up in two more. In 1936, he shot the lowest competitive score of his long

career on the White course, a 61.

It still is the record. Ed "Porky" Oliver, one of the 40 other pros teeing off against Snead, matched the nine-under par effort in 1952. But Snead still won that year by six strokes over Oliver.

The Slammer, who grew up and started knocking golf balls right in these mountains, also won in 1951 and 1953. He had his hands on a fourth straight in 1954, but lost in a playoff to Herman Scharlau, who also is competing again.

**goodness, YES!**

**it's delicious**

Dinner at

**KEWPEE'S**

is just great, folks  
and it's priced to fit  
the student's budget

## Graduating Electronics & Mechanical Engineers...

## How long will you be "Junior" in your job?

READ THIS CHECK LIST BEFORE MAKING A FINAL DECISION.  
IT MAY INCLUDE FACTORS YOU HAVE NOT CONSIDERED.

### WILL MY STARTING SALARY BE

- ☐ Equal to industry standards?
- ☐ Better than industry standards?

Gilfillan starting salaries are higher than overall industry standards (averaging \$100 a month higher even in this competitive area). This is because, at Gilfillan, the individual's capacity develops more rapidly than under rigid corporation training systems. He is literally worth more from the start.

### HOW RAPIDLY WILL I ADVANCE?

- ☐ At predetermined intervals, according to a rigid seniority system?
- ☐ As rapidly as my abilities warrant?

At Gilfillan, there is no "hierarchy" or seniority system. Individual's advance as rapidly as abilities develop. Salaries are reviewed at least twice a year.

### WHAT WILL MY "STANDING" BE?

- ☐ Will I have to work at a board, punch a time clock, or be docked for time off?
- ☐ Will I have professional standing?

At Gilfillan, you do not punch a time clock. You work at a desk, in a professional atmosphere, and are subject to your own conscience when you need personal time off.

### CAN I "CARRY THROUGH" ON MY OWN IDEAS?

- ☐ Up to a point, then senior engineers take over?
- ☐ All the way through to production?

At Gilfillan, a man with a sound idea is "given his head" and complete team project cooperation. An assigned technician reports directly to the engineer, for construction and wiring of circuits. The engineer carries full design responsibility.



GILFILLAN GCA QUADRADAR provides Search, Precision, Final Approach, Height Finding and Airport Taxi Control in a single, air-transportable equipment. Designed for and highly efficient in handling military and civil jet aircraft. Quadradar has received immediate and universal acceptance.

### WILL MY FIRM BE THE RIGHT SIZE?

- ☐ Is it so large I could be lost in the shuffle?
- ☐ Is it so small that the work may not be pure engineering?
- ☐ Is the firm growing, so I can grow with it?

Gilfillan is neither a giant nor a small, limited company. Seven Gilfillan plants are located in Southern California, with Engineering Headquarters at Los Angeles. Gilfillan is large enough to handle all phases of research, design and development, yet not so large a man gets lost. The individual's growth is assured by the continuing Gilfillan expansion program.

### WHAT WILL BE MY "FIELD" OF WORK?

- ☐ Will I be confined to one field or have opportunities in a diversity of fields?
- ☐ Will these include "tomorrow's" newest areas of electronics development?

Gilfillan is best known as the pioneer of GCA radar and all its major improvements, including the Gilfillan GCA Quadradar—yet GCA is only one facet of Gilfillan activities. The firm has been engaged as a prime supplier of research, development and production of Military Electronics Systems since 1942, including Missile Guidance systems, airborne and ground, Electronic Countermeasures, Navigational Radar (GCA and AGCA), and Electronic Radar Trainers. Gilfillan is now concerned with many of today's newest, classified areas of electronics exploration and development.

### CAN I IMPROVE MY PROFESSIONAL KNOWLEDGE AND STATUS?

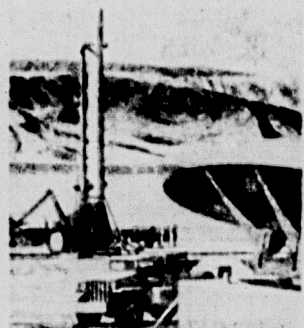
- ☐ Will tuition be paid by my firm?
- ☐ Will I be given aid in publishing technical articles?
- ☐ Will the experience of the entire engineering group be available to me?

Gilfillan pays tuition at universities of technical institutes. All possible aid is given in individual publishing of technical articles. Continuing symposiums make the total knowledge of the Gilfillan engineering staff available to the individual.

### WHAT ABOUT THE STABILITY OF MY JOB?

- ☐ Does it depend on temporary big contracts?
- ☐ Is the firm a "war baby" type that may or may not be permanent?

Gilfillan has appointed new engineers every year since the firm was established in 1912. Current openings are in no sense emergency or temporary big contract jobs, but part of continuing Gilfillan expansion.



THE ARMY'S CORPORAL, Prime Contractor for Basic Research and Development—Jet Propulsion Laboratory of California Institute of Technology. Prime Contractor for development (improvement and simplification of ground and airborne electronics systems, and production of ground guidance systems and airborne electronics. Gilfillan, California, also holds Prime Contracts, many developmental, with the Air Force, Army Ordnance, Army Signal Corps, United States Navy, Royal Canadian Air Force, Royal Australian Air Force, South African Air Force and the French Government.

### WHAT ABOUT MY JOB LOCATION?

- ☐ Is it in an area with few other electronics firms, so I might find myself in a backwater?
- ☐ Is it in the center of the industry, so there are many opportunities if I want to make a change?

Gilfillan Engineering Headquarters is in Los Angeles, the center of the Electronics Industry, with more than 165 firms in operation. Among these, Gilfillan's reputation is top, broadening opportunity if the Gilfillan engineer should decide to go elsewhere. However, it is fair to say that, once acquainted with the firm's operation, Gilfillan engineers plan to stay permanently because of superior opportunities for a comprehensive, remunerative, and secure lifetime career.

### CAN I GET MORE GILFILLAN FACTS?

- ☐ By correspondence?
- ☐ Personally?

Both. Address specific inquiries to R. E. Bell, Gilfillan Bros., 1815 Venice Blvd., Los Angeles, Calif. An interview will be arranged if you are in the Los Angeles area. Telephone Mr. Bell at DU 1-3441.

**Gilfillan**  
Los Angeles

PRIME CONTRACTORS FOR COMPLETE SYSTEMS  
Electronic Countermeasures  
Air Navigation Aids, Guided Missiles  
Airborne Radar, Radar Trainers

**Liebermann's**

**BEST GIFT FOR A GRADUATE**

**MEN'S TRAVEL CASES**

in fine cowhide leather

It's the kind of gift he'll carry with pride wherever he goes. And you'll be amazed that such really fine cases cost so little. Genuine top grain cowhide leather, double saddle-stitched and reinforced with steel, with rich linings. See these and many more in our large collection.

**TWO-SUITER 39<sup>95</sup>**

**O'NITE CASE 35<sup>00</sup>**

**FREE GOLD MONOGRAM**

**Liebermann's**

107 South Washington

## Foytack's 5-Hitter Beats Senators, 7-3

**Bosox Take 6th in 7 Starts By Downing White Sox, 7-5**

WASHINGTON (AP)—Detroit got only five hits Wednesday night, but Charley Maxwell and Al Kaline each slammed two-run homers and Frank House belted a three-run triple as the Tigers defeated Washington, 7-3.

Paul Foytack held the Senators to five hits to post his first win. Camillo Pascual was the starter and loser.

Harvey Kuenn scratched a single to start a big fourth inning for the Tigers and Wayne Belardi walked.

Kaline forced Belardi and Ray Boone lined out, but Bill Tuttle walked and House crushed a triple to center. Maxwell followed with his homer.

Two Tigers added two runs in the fifth when Kuenn worked and Kaline hit his fourth homer.

Roy Sievers homered for the Senators.

DETROIT 000 520 070-7 5 0  
Washington 100 100 010-3 5 0  
Foytack and House, PASCUAL, Cleveland (6), Grob (9) and Courtney.

### Cards Top Phils, 3-0

ST. LOUIS (AP)—Tom Poholsky, pitching his third straight victory in a streak during which he has allowed only one run, limited Philadelphia to four hits Wednesday night as the surging St. Louis Cardinals gained a 3-0 triumph, their sixth in the last seven starts.

The big Redbird right-hander, who has issued only three walks in 33 innings this season, did not pass a batter and struck out five as he permitted no Philadelphia player to advance as far as second.

St. Louis, meanwhile, collected only seven hits off four Philadelphia pitchers, but their blows included a homer by rookie catcher Hal Smith in the fifth inning and a seventh-inning triple by Rio Reppuck and double by Bill Virdon following Wally Moon's lead-off single.

Philadelphia 000 000 000-0 4 0  
St. Louis 000 010 205-3 7 0

WEHMEIER, Meyer (7), Lipetri (8), Simmons (8) and Lonnett; Poholsky and Smith.

★ ★ ★  
**Relief Comes Through**

BOSTON (AP)—Boston defeated Chicago 7-5 Wednesday for its sixth victory in the last seven games on rookie Dave Sister's brilliant relief pitching and a tie-dissolving three-run inning.

Chicago 000 000 000-0 4 0  
Boston 000 000 000-7 5 0

WEHMEIER, Meyer (7), Lipetri (8), Simmons (8) and Lonnett; Poholsky and Smith.

★ ★ ★  
Pittsburgh at Milwaukee postponed, rain.  
★ ★ ★  
Brooklyn at Chicago postponed, rain.

**GREGORY JENNIFER PECK • JONES • MARCH**

**FREDRIC MARCH**

**The Man in the Gray Flannel Suit**

**COLOR BY DE LUXE CINEMASCOPE**

Produced by **DARRYL F. ZANUCK**  
Written for the Screen and Directed by **NUNNALLY JOHNSON**

**MICHIGAN**  
Starts Friday



# Net Squad Trips Irish In Close 5-4 Victory

## Final Match Gives Meet To Spartans

Stepanovic, Brogan  
Take Deciding Win

By RON MESCALL

The Michigan State tennis team eked out a 5-4 victory over the Irish of Notre Dame in a match played at South Bend, Ind., Tuesday.

The Irish opened the scoring in the No. 1 singles slot as Harry Smith slipped by Dave Brogan, 6-3, 6-8, 7-5, in a three set encounter which engulfed a 3-1 lead built up by Brogan in the third set.

Bill Bisard of Michigan State, ranked as the No. 2 singles position for the match and rolled up a 6-4, 6-4 conquest of Charles Vanoncin. Bisard has scored in his last three singles encounters, moving up the line starting with No. 4 singles, then winning at No. 3 and now at No. 2.

George Stepanovic won the No. 3 singles in straight sets over Dean Richards of Notre Dame 10-8, 7-5. Stepanovic is a veteran letterman who has figured high in the scoring for the net squad this year.

Laik Vela of the Spartans again came back strong in the second and third sets to slant out a 4-6, 5-8, 6-6 victory over Bill O'Connor.

Jim Beachum came back to win the second set in his No. 4 singles match only to lose in the third as Jim Rich of Notre Dame won 6-3, 4-6, 7-5.

Woody Darr in the No. 6 singles position failed to overcome John Metz of Notre Dame as he battled to a 5-5 tie in both sets only to drop the deciding games. The set score was 7-5, 7-5. This made the score 3 all going into the doubles.

Opening strong in the doubles netters Beachum and Darr at the No. 3 position dealt a 6-1, 5-7, 6-2, defeat to Van Dyke and Richards of the Irish.

In the No. 2 doubles Bisard and Vela lost to Rich and Metz, tying the score at 4-4.

The No. 1 doubles then became the deciding match as Brogan and Stepanovic defeated Smith and Vanoncin in the first set 6-3. Then after being down 4-3 they broke Smith's service and won the next three games to chalk up a 6-4 victory in the set and add the point needed to defeat Notre Dame 5-4.

Jose Aguerro of Tulane is ranked first in the 1955 national collegiate tennis rankings.



GEORGE STEPANOVIC



BILL BISARD

... singles victors over Notre Dame ...

## Five Games Rained Out

# Climate Wages War Against State Nine

By HARDY CHRIST

From all indications of last week's victory over highly-touted Wisconsin, the Spartan baseball team seems determined to gain ground in the Big 10 title race.

The weather, however, has been State's biggest opponent all season. Wednesday, rain washed out the Spartans' scheduled tilt with Wayne University, and the game has been rescheduled for May 29.

Bad weather has caused the postponement of five games so far this season, four of them in Big 10 play. On April 28, the Indiana-State twin-bill was rained out and last Saturday the Spartans' doubleheader with Northwestern met a similar fate.

Although the game against Wayne has been rescheduled, Big 10 rules prohibit rescheduling of any conference game.

"Those cancelled Big 10 games are gone forever," commented John Kobs, varsity baseball coach. "It's a bad break for us that we couldn't play them, for the competition was against two of the conference's weaker teams, and our chances to win were very good."

From Kobs' viewpoint, the poor weather has been a great handicap to his team, especially his large pitching staff, which has been unable to get regular work.

In the Big 10 standings, the Spartans are currently tied with Michigan for fifth place with a

record of one win against one defeat. Ohio State leads the conference with a perfect 4-0 record. Behind OSU is Minnesota and Illinois with 3-1 and 4-2 marks respectively.

Cancellation of any more doubleheaders would almost surely deprive the Spartan squad of an opportunity to challenge for the league crown.

Michigan State is currently second in the conference in team batting with a .272 average. The Buckeyes lead with a .283 overall mark.

State, however, boasts the Big 10's leading hitter in Jimmy Sack. The little leftfielder is hitting at a .636 pace in the two conference games played by the Spartans. His seven hits include three doubles and a triple.

Catcher Al Luce is in fourth place among the individual batting leaders, possessing a .455 mark, and John Polonsky 4th, far behind with a .429 average.

Earl Morrill is tied with Jerry Kindall of Minnesota, Ron Tunis of Purdue, and John DeMerit of Wisconsin for the home run leadership, as each has two in conference play.

## IM Schedule

Thursday, May 10  
SOFTBALL

OC 1 Theta Chi vs. Delta Sigma  
OC 2 Psi U vs. Beta  
OC 3 Rhoer vs. Redick  
JC 1 Animals vs. Coral Gables  
DM 1 Champs vs. Ironmen  
DM 2 ACE vs. Lushwell A.C.  
SP 1 Winkler Pups vs. Happy Acres  
A.C.  
SP 2 Phillips 6 vs. Phillips 4  
SP 3 Alpha Kappa vs. KDD's  
SP 4 Butterfield Rebels vs. Newman Club  
PH 1 Evans Scholars vs. Barchus Bears  
PH 2 Landscape Art vs. Black and White  
AG 1 Az Educ vs. Az Educ Club  
6:45  
OC 1 ACS vs. Phi Kappa Tau  
OC 2 DU vs. Kappa Sigma  
OC 3 ATU vs. Sigma Nu  
JC 1 Alpha Phi Alpha vs. Delta  
DM 1 Delta Chi vs. Alpha Sigma Phi  
DM 2 Delta Sigma Phi vs. Farmhouse  
SP 1 Lambda Chi vs. Sigma Chi  
SP 2 Phi Kappa Psi vs. Triangle  
SP 3 SAE vs. ZBT  
SP 4 Phi Kappa Sigma vs. Theta Xi  
PH 1 No Hitters vs. U.P. Lads  
PH 2 Phillips 5 vs. Phillips 3

TENNIS

All tennis matches scheduled for Wednesday night will be played to night at the same time and location.

## Coeds Outpoint Hope College Tennis Squad

Michigan State's Women's Tennis Team easily defeated Hope College Monday, 8-0.

Joyce Pniwski, Hamtramck freshman, shut out Sue Van Slaght, 6-0, 6-0.

Barbara Proudfoot, Toronto Junior, outpointed Alice Warren, 6-3, 6-2. Elaine Orr, Monroe freshman, overpowered Jan Evert in two sets, 6-1, 6-1.

Loris Alto, Monroe freshman, defeated Joyce Leightley, 6-2, 6-1. Betsy Freeman, Winchester, Mass., junior, downed Mary Kay Dienes, 6-1, 6-2.

Laverne Roman, Royal Oak sophomore, after losing her first set, defeated Betty Burnett, 4-6, 8-6, 6-2.

The doubles team of Misses Pniwski and Proudfoot outpointed Misses Warren and Evert, 6-0, 6-0.

Misses Orr and Alto, State No. 2 team, defeated Donna Hardenburg and Miss Leightley, 6-0, 6-4.

The women's team will meet Western Michigan College Saturday on the home courts.

## Top Heavies To Meet in Elimination

Patterson, Jackson  
Seek Vacated Title

NEW YORK (P) — Floyd Patterson and Tommy "Hurricane" Jackson, two top contenders for the world heavyweight title vacated by Rocky Marciano, will meet Friday, June 8, in a 12-round elimination match at Madison Square Garden.

If the bout produces a sensational performance, the survivor probably will be matched with light-heavyweight champion Archie Moore for Rocky's title in September.

A startling performance by some other contender in the elimination series might throw it into a wide open scramble.

The bout will be broadcast and telecast coast to coast.

The match was announced Wednesday by Julius Helfand, chairman of the New York State Athletic Commission, who approved the contracts.

Under the terms of the bout, each fighter will get a minimum guarantee of \$40,000, of which \$20,000 will come from radio-television rights. Each fighter also gets 25 per cent of the gross gate with a guarantee of \$20,000.

"This is a long step forward in the elimination tournament from which will evolve the eventual successor to Rocky Marciano," said Helfand. "Mr. Norris and I hope the tournament eventually will produce a champion."

The latest Ring magazine ratings show Jackson as the No. 2 contender and Patterson No. 5. Archie Moore is No. 1.

## 'Mural Highlights

ENTRIES for the IM golf tournament are due in the IM office by 5 p.m. Friday. The tournament will be run on a team basis for dormitories and fraternities and on an individual basis for independents.

Foursomes as selected by the IM office will be able to play starting Saturday at Grosbeck Golf Course.

32 Days in

# EUROPE

via air from New York

\$896 all expenses



COLLEGE TRAVEL OFFICE

130 W. GRAND RIVER

## The new Arrow FREE-WAY

puts "action" in a shirt ...

Here's a knitted shirt just made for active sports (and lounging around, as well). The feather-light fabric is bias-cut for perfect freedom in any position. The back, cut longer than the front, lets the collar fit your neck just right. In 20 colors. Wear it correctly—with the Arrow Bermuda shorts (6 different colors)—and you've made the perfect choice for summer FREE-WAY, \$3.95. Shorts, \$3.95 up.



ARROW  
—first in fashion  
SHIRTS • TIES • SLACKS

AVAILABLE AT ...



COMPLETE LINE OF  
ARROW SHIRTS AT ...

THE  
Tog Shop  
Luan Theater Bldg.  
East Lansing

At ...

Holden-Reid

Free Frandor  
Parking Center

Make it a

great day for...

Mother

\*WILL LOVE A BEAUTIFUL BOUQUET  
OF FLOWERS, PLANT OR CORSAGE ...

LET MOM KNOW THAT YOU DIDN'T  
FORGET HER ON HER DAY OF DAYS.

IT'S NOT TOO LATE TO

WIRE FLOWERS ANYWHERE

— ORDER TODAY —

NORM KESEL FLORIST

Across from Union

Phone ED 2-3519

AND BE SURE TO INCLUDE A

MOTHER'S DAY CARD FROM OUR

FINE SELECTION ...



# Hats and Rings

## Ike Tops Kefauver In Indiana Primary

INDIANAPOLIS (AP) — President Eisenhower topped Sen. Estes Kefauver in Indiana's presidential popularity poll but the Tennessee Democrat claimed Wednesday he won "a great victory" anyway.

The first Hoosier presidential primary in 28 years, marked by multiplied confusion and an exceptionally light vote, failed to turn up any signs of further uprising against the Eisenhower administration.

That was one thing both Democratic and Republican leaders in the state agreed on — although the Democrats are saying now the farmer will turn against Eisenhower in November and the Republicans are saying they won't.

Party leaders also had agreed in advance that Eisenhower would roll up a bigger vote than Kefauver in a state which usually goes Republican both in primary and general elections. And he did that.

He showed under his nominal opposition to the GOP state, last day of Chicago, a furniture manufacturer and "America First."

When nearly all the ballots were in from Tuesday's voting, these were the standings, with the Republican totals complete in all 4361 precincts and Democratic returns in from 1,019 of 4,333.

Eisenhower 353,938 and 61 per cent.

Daley 13,417 and 2 per cent.

Kefauver 216,971 and 37 per cent.

The 364 missing Democratic precincts were all in Lake County, an industrial area and Democratic fortress embracing Gary, East Chicago and Hammond.

Kefauver figured Lake County returns would boost his percentage to little more than 40.

Since Adlai E. Stevenson got 41 per cent in losing Indiana to Eisenhower in the 1952 presidential election, Kefauver said in Santa Barbara, Calif.

"I consider this a great victory for me."

# Voting

(Continued from Page 1)

Miller and Gloria Murray, Snyder, Louis Fennell, Judy Koch and Evelyn Reese.

One candidate will be eliminated from the following districts: North Williams, Betsy Frost and Bobbie Petersen; Gilchrist, Lolly Lohman and Barbara Ties; East Mayor Janet Meyers and Marlene Peterson; West Mayor Lallie Bailey and Judy Gossinger.

East Yakeley: Joanne Linton and Karen Milligan; East Landon: Caroline Gezon and Lina Montgomery; West Landon: Lynn Larke and Merle Key; North Campbell: Lois Faust and Sylvia Gazley; South Campbell: Phyllis Hurwitz and Pat Meloy and Sorority: Donna Amoe and Sally Boone.

Six representatives will be elected from East Lansing and Lansing. Finalists are: Lansing: Pat Beckman, Bob Becker, Katie Doyle, Charles Fitz, Jon Heller, Carol Newell, and Harry Powell; East Lansing: Jack Crosby, Charles Flaim, Don Gillette, Marilyn Jones, Fred Mangold, Robert Messimer, David Olson, Pete Skamser, and Karl Willson.

Four married housing congressmen will be elected. Finalists are: James Blakenmore, Walt Eckhardt, William Felicko, Bob Hess, Bob Lawrence and Kenneth Rule.

Eight districts will automatically seat 12 congressmen due to lack of sufficient candidates. They include: Bryan Daniel Gallagher and Ben Whitehead; Rather John Goodland and Clayton Sauve; Butterfield Tom Kinen and Miss Mitchell; South Williams: Marilyn Doxner; West Yakeley: Peggy Miller, Fraternity: Don Paul, Jack Schrammek and Al White; and men's groups: Jim Douglass.



GOVERNOR WILLIAMS

# Williams

(Continued from Page 1)

"In the face of these new challenges, I cannot justify in my own heart a withdrawal from the fight," Williams said.

Williams, who broke a long Republican hold on the capitol, is the first Democrat to serve a third term, and the first of either party to stay in office four terms.

He beat Gov. Kim Sigler in 1948 by 163,000 votes, edged out former Gov. Harry Kelly in 1950 by 1,100 votes after a recount, slipped past Fred Alger in 1952 with an 8,600-vote plurality and trounced Donald Leonard in 1954 by 253,000 votes.

Leonard and Detroit Mayor Albert Cobo will oppose each other for the Republican nomination for governor.

Studies of Greenland indicated that the island may be divided into at least three parts by canyons scraped out below sea level by glaciers.

# Hannah to Return From Defense Meet

President John A. Hannah will return today from a three-day meeting of the Permanent Joint Board on Defense, U. S.-Canada. Dr. Hannah is the chairman of the American representation. The meeting was held at Camp Lejeune, N.C.

From 1939 to 1953, U.S. population increased 22 per cent and the number of jobs 35 per cent.

**BIG BILL BOPE FOR JR. PRESIDENT**

SPONSORED BY AΦA

UNION BUILDING, MAY 12 and 13

**SIDEWALK ART EXHIBIT**

AND BE SURE TO SEE

THE 3rd ANNUAL

C.B.S. Student Art Show

MAY 21 thru MAY 26

IN THE DOWNSTAIRS SHOWROOM

of the **CAMPUS BOOK STORE**

A 2 FRONT BOOK STORE

the complete Artist's Headquarters for Students of MSU

She's gifted from her head to her toes—at Jacobson's.

Soft wisp of summer—a silk chiffon scarf, its matching chiffon flower looped and pinned for perfect security. Many colors, in its own plastic gift box. \$3

Jean Patou's JOY—the joy of exotic full-flowering fragrance in a subtle blend of jasmine and rose. \$10 to \$25

A froth of a blouse in daeron crepe, its bib effect a delicate tracery of embroidery. White, sizes 32 to 38. 12.95

A folding umbrella—the gift that's practically fashionable. In plaids, bordered solids, or unpattered simplicity. \$5 to 6.95

"Poetic"—a handsewn shortie glove with embroidered lattice work in its cut-out back. White, sizes 6 to 7½. \$4

such a gifted mother!

Stark white—an "alumes" handbag that holds everything. 10.95

For a jewel of a mother, jewel flowers by Trifari. Summer pastels set in gold. Necklace 7.50, Bracelet \$6, button earrings \$6

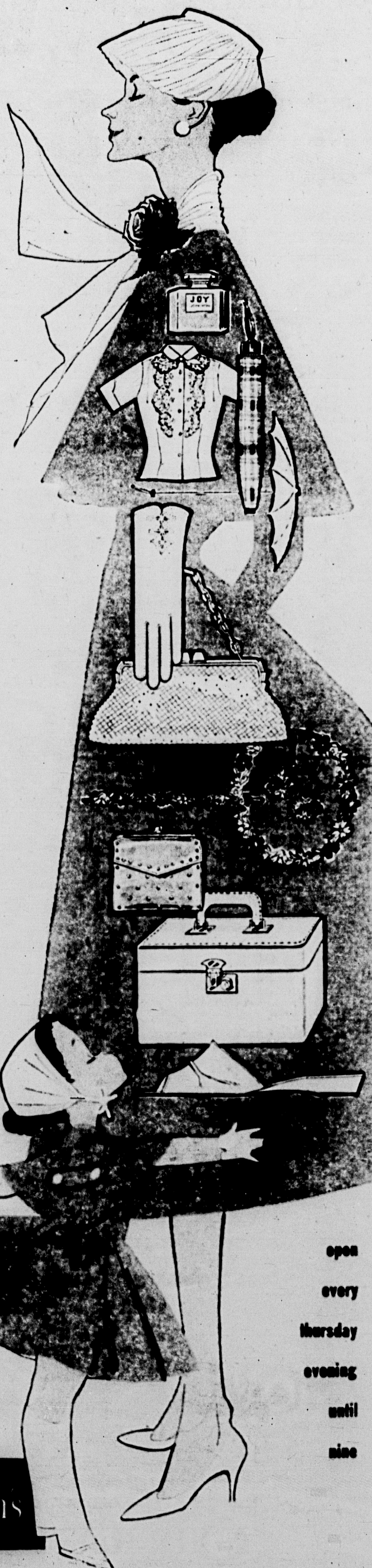
A French purse of fine calf, agleam with tiny jewels. In a softened rainbow of pale blue, shell pink, fruitwood, misty gray, antique white. \$5

The saddle-stitched train case has adjustable bottle strap, a full mirror. Rawtex, red, blue, gray, or tan saddle-lite vinyl. Vanity case also available. 8.95

Solid comfort—a classic scuff with dressmaker drape, in pink, blue, or white leather. 5.50

Belle-Sharmer nylon hosiery in her own personal leg-size. Sheer elegance for Mother 1.95; box of 3 pairs 5.65

\*plus federal tax



open every Thursday evening until nine

Jacobson's



the best... now 5 ways better!

**McGREGOR DRIZZLER JACKET**

Weatherwise, rayon and cotton. Down forming silicone finished, it sheds rain, wrinkles, non-iron stains. Big self-seal pockets, push-up sleeves, stay-down waist, windproof tab collar, quick-start automatic zipper. Every color of a man's rainbow. Wash it. Hang it. Wear it.

34-46 as featured in **LIFE** \$10.95

**H. Kositchek & Bro.**