

# Michigan State News

MSC DAILY STUDENT PUBLICATION

VOL. 44, NO. 87

EAST LANSING, MICHIGAN — MONDAY, NOVEMBER 3, 1952

WEATHER:  
NO RAIN, BUT  
A LITTLE COOLER

FIVE CENTS

## City Expects Big Turnout In Election

8,000 Registered For Tuesday Voting

A heavy East Lansing turnout is expected for the presidential elections Tuesday, according to Mrs. Shirley Suesz, city clerk, who said approximately 8,000 persons have registered. Six hundred absentee ballots were also expected by last Saturday's deadline.

Fifty-seven per cent of the East Lansing population voted in the August primary, and at least 75 per cent of them are expected to vote Tuesday.

East Lansing makes up one ward which is divided into five precincts. Persons in the first precinct will vote at the Central Grade School on West Grand River. Those in the second precinct will vote at the East Lansing High School on Forest St. The City Hall will be used for the third precinct, Bayview Grade School for the fourth, and Hut 94 in Quonset Village for the fifth.

East Lansing's heaviest registration percentage came from the married housing area. In order to vote in the state of Michigan, a person must live six months in the state and 30 days in the voting precinct.

According to Mrs. Suesz, the Republican vote was always the heaviest in the primary, but the Democratic votes outnumbered the Republican in the actual election.



## ... X Marks the

Alpha Gamma Rho fraternity members are beginning to wonder if AGR might not stand for "all gongs ringing." A bewildered coed recently mistook the spot AGR house, located at 308 Abbott Rd., for the East Lansing Fire Department, 400 Abbott. She was looking for the Fire Department to get an absentee ballot. An absent-minded ballot maybe?

## ... Mane Feature

Only after North Campbell had won the Homecoming display award for women's dormitories was it put to the final test of appeal. Penn State students remarked that they liked Campbell's lion better than their own mascot. They liked it so well, in fact, that the dorm residents found their paper mache lion missing soon afterward.

## ... No Like Ike—

Two students, both staunch Democrats, went down to hear President Truman Thursday and when hitchhiking back to East Lansing they got a ride with a rabid Republican. A fast and furious discussion soon broke out, and only half way out of town the driver pulled his car to the side of the road and curtly said, "This is as far as the car goes." The students removed their campaign buttons and put out their thumbs again.

## Opportunity Exams Slated For Tuesday

Seniors and graduate students interested in taking the Junior Management Assistant examination and the Navy Department Internship Program will have an opportunity to do so tomorrow. The examination will be held at the Department of the Navy, 118 Berkeley Hall.

## Counter-Spy To Replace Military Editor

Herbert Phibbs, a counter-spy agent, will replace Hanson Baldwin, New York Times military editor, originally scheduled for the Lecture Series tomorrow at 8:15 p.m. in the Auditorium.

## Fishing Boats Meet Russian Warships

TOKYO, (AP)—Police officers said Japanese Communists are using fishing boats to report Russian warships off Northern Japan to smuggle information and agents in and out of Japan.

## Two Heads Equal Double Trouble

MISSA, (AP)—William Felt has reported catching a two-headed mouse in a trap with one piece of cheese.

## Operation Skywatch

John T. Burgess, AFROTC, is heading the operation. The two cadet corps have responded to a call for volunteers issued a few weeks ago by the U.S. Air Force and civil authorities, according to Capt. Irvine C. Llewellyn, U.S. Army, and Capt. Benjamin W. Davis, USAF, public information officers at MSC.

## Service Clinic to Shift Site

VanRoekel Named Head of Division

By MARY ALICE RITCHLIN

The Improvement Services Department, now a separate division of Basic College, will move this week to the former Business Administration Building, A-3 South Campus.

Dr. Byron H. VanRoekel has been named head of the new division, which is designed to help instructors improve their programs and work more closely with students who need special aid.

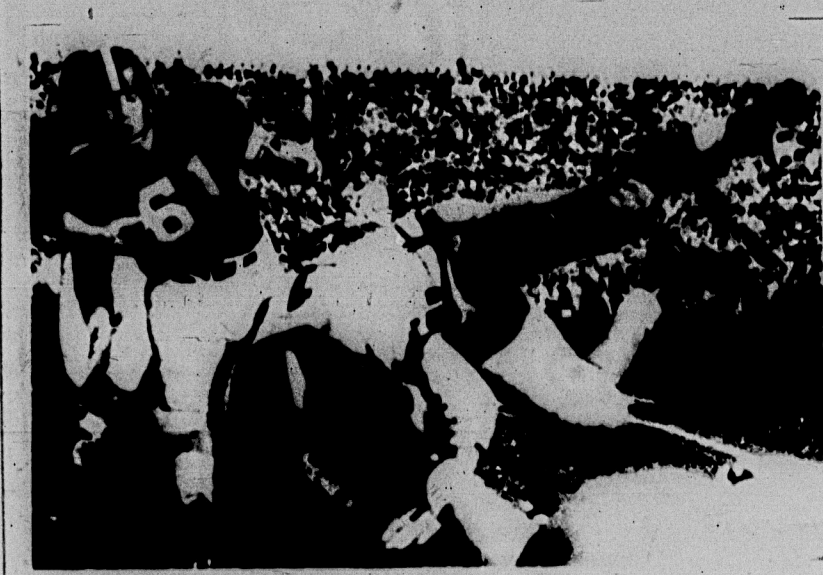
The staff will be made up of Dr. Isabelle Blith, arithmetic; Dr. A. T. Corday, English as a foreign language; Dr. VanRoekel, reading; Dr. John Auden, speech; and Dr. William Baker, writing.

This term, 710 students are enrolled. The courses consist of two class hours a week, with no credit. The program is open to adults also.

Clinics have been set up all over the state, especially in reading, in response to public demand. MSC instructors perform a dual role and offer their services in many Michigan communities in addition to their work here.

The clinics were started in 1945 with only speech and writing offered. English as a foreign language was added in 1948, and arithmetic was first offered in 1949.

## Spartans Extend Edge Over Conference Foes



Purdue quarterback Dale Samuels (10) is tripped up on the Spartans' 35-yard line as tackle Joe Klein moves up to make sure he goes down. Samuels elected to run when his receivers

were covered on an attempted pass play in the third quarter of Saturday's game at Lafayette. The sterling job turned in by State's defensive unit highlighted the Spartans' 14-7 victory.

## State Nips Purdue, 14-7 For 21st Win

Last Ditch Threat Halted by Weaver

By TOM RYAN

Michigan State successfully protected its two unbeaten football records Saturday, but it was mainly through the work of the Spartans' rock-ribbed defensive unit that State stood off a fired-up Purdue team to win 14-7.

Saturday's victory before 49,500 fans at Ross-Ade Stadium in Lafayette, Ind., was Michigan State's 21st in a row. The victory also extended the Spartans' record against Big Ten opponents since 1950, when Michigan State became a member of the Big Ten, to eight victories without a defeat.

Doug Weaver, a linebacker who played his last game of the year, emerged as the Spartans' hero when he intercepted a Purdue pass on the Michigan State five-yard line to preserve State's winning streak.

With Michigan State leading 14-7 in the final period, Purdue began a determined drive from its own 20 to the MSC eight-yard line for a first down. After the State line held Purdue's fullback Max Schmaling for no gain, quarterback Dale Samuels attempted a jump pass over the center of his line.

However, Weaver was there instead of the intended receiver, and the 125-pound senior from Goshen, Ind. returned the ball to State's 19, where the Spartans ran out the clock to preserve their long string of victories.

Michigan State scored first in the hard fought game. State's touchdown was set up by a poor punt of 16 yards by Norman Montgomery, with the ball rolling out of bounds on the Purdue 28 yard line.

State moved the ball downfield in five plays, with Capt. Don McAuliffe scoring from the two yard line. McAuliffe carried the ball three times during the drive and accounted for 16 of the 28 yards. After Evan Slonek had converted, Purdue began a drive down to Michigan State's 32 yard line, where Quarterback Dale Samuels fumbled. State's left end, Ed Luke, who played a big part in the defensive unit's line show, pounced on the ball, giving MSC possession on its own 42.

Nine plays later, State scored again. Quarterback Tom Yewic sparked the drive with his passing and running. He hit Paul Bekker for 13 yards and then passed to halfback Billy Wells for seven more.

On the Purdue 25, Yewic was trapped and ran with the ball, picking up a yard. When a Purdue linebacker roughed the Spartan signal caller, Michigan State was awarded a first down on the Bollemauer nine.

After two running plays had advanced the ball to the seven yard line, Yewic dropped back to see PURDUE FALLS, Page 5

## BULLETIN

COLUMBUS, (AP)—Warden Ralph W. Alvis said last night that 1,600 Ohio Penitentiary convicts in four cellblocks are "out of control" and that guards shot and wounded one long-term convict trying to escape.

## High of 45

Rain Departs, But Chilly Winds Remain

It ain't gonna rain no more, says the weather bureau, but bring the winter coats back out of the closets.

The rain, which began early yesterday afternoon is not expected to continue today although the sky will remain cloudy. After soaring to near 70 degrees this weekend, the mercury is slated to drop to 38 today. The expected high will be 45.

Yesterday's west and northwest wind changed to northeast early this morning. Predicted velocity for today is 15 to 20 miles an hour.

## Counselors Conference Scheduled

Dr. Lee Thurston, state superintendent of public instruction, Dean Clifford E. Erickson of the Basic College, and John Armstrong of the California Test Bureau will be the main speakers tomorrow at the sixth annual State Conference of Counselors. About 300 counselors are expected to attend the sessions at the Kellogg Center. The Counselor Takes Inventory is the theme around which discussions will be conducted.

Donna Anna's father, who had been turned into a dignified statue and who had little else but the military on his mind, was played by Hardwicke. Although he had no major lines, his comical commentary on the others' ideas added spice to the performance.

Neither scenery nor props were used and one of the most unusual aspects was Shaw's informality. The actors sat down when they weren't participating in the action, turned pages of the script and conveyed a feeling of relaxation to the audience.

## 'Don Juan' Crackles With Shaw's Wit

By REV BUSCH

An entertaining presentation of Bernard Shaw's "Don Juan in Hell" was given by the First Drama Quartette to an appreciative audience in the Auditorium Friday night.

The brilliancy of the play itself seemed to overshadow individual performances. In it, Shaw takes his customary subtle digs at society, making fun of every institution from marriage to war.

The four principals were veteran actors Vincent Price, Agnes Moorehead, Charles Boyer and Sir Cedric Hardwicke.

Price, who looks like the satanic stereotype, did a competent job of portraying an egotistical Devil proud of his shifty reputation on earth. In Shaw's characterization, the Prince of Darkness is much more like a friendly resort owner trying to entice new customers than an evil nec-do-well.

Boyer, as Don Juan held the audience even, during his most lengthy speeches. The inflections, gestures and facial expressions which he used to complete the part of the casanova who found spiritual fulfillment neither on earth nor in heaven or hell were highly effective. Although some of the dialogue was lost because of the Boyer accent, it added to rather than detracted from the portrayal.

Some of the best laughs of the play were provided by Miss Moorehead and Hardwicke. Donna Anna had been a woman who knew and used Shaw's concept of feminine wiles directed mostly toward the male sex and Miss Moorehead gave a vivid interpretation of her. Especially well-done were her many gleeful chuckles throughout the play.

Donna Anna's father, who had been turned into a dignified statue and who had little else but the military on his mind, was played by Hardwicke. Although he had no major lines, his comical commentary on the others' ideas added spice to the performance.

Neither scenery nor props were used and one of the most unusual aspects was Shaw's informality. The actors sat down when they weren't participating in the action, turned pages of the script and conveyed a feeling of relaxation to the audience.

## Honorary Offers Tutoring Service

Tau Beta Pi National Engineering honorary fraternity is offering an opportunity for tutoring to basic engineers. Harry M. Scheffer, publicity agent for the society, said tutoring would begin today from 8 to 10 p.m., Monday through Thursday in Room 301, Olds Hall.

## PanHel Sets Rush Convo For Tonight

Cuebs intending to rush winter term, should attend the Rush Convocation being held tonight in the Music Auditorium, Reverly Stout, rushing chairman, announced yesterday.

Those with last names starting with A to K may attend the program at 7 p.m. A second program is scheduled at 8 p.m. to take care of the remainder of the rushers.

A skit explaining rushing procedure will be presented by Pan Hellenic Council, and talks will be given by Joan Donkin, president, and by Miss Mabel Peterson, advisor.

Rushers will be given rushing booklets and cards at the convocation. Miss Stout emphasized that rushers should not send roommates to pick up the material.

Counseling service on rushing will be available tomorrow and Wednesday from 4 to 5 p.m. in Room 34 of the Union Council. Rushers will be present to answer any questions prospective rushers may have.

## NEWS IN BRIEF

### GOP Says Dems Rig Farm Prices

NEW YORK, (AP)—GOP supporters of Gen. Dwight D. Eisenhower last night accused the Democrats of trying to "rig farm prices for political advantage" in a move to win Tuesday's election.

### Truman Releases Document

INDEPENDENCE, Mo. (AP)—President Truman last night made public a long-time top secret document embodying agreement by the Joint Chiefs of Staff in 1947 to the withdrawal of U.S. occupation forces from Korea, to "stop misrepresentation of the contents."

### U. S. Takes Part in Sea Exercise

VALETTA, Malta (AP)—Submarines of six nations left Malta yesterday to take part in the newest Mediterranean combined maneuver, Exercise Long Step, which begins today. The exercise will involve about 150 ships and 500 planes from Britain, the United States, Turkey, France, Italy and Greece.

### Mexico Sides on Prisoner Issue

UNITED NATIONS, N.Y. (AP)—Mexico joined yesterday with U.N. small countries in an attempt to get a U.N.-Communist agreement on the Korean war prisoners issue, with a formal proposal to let the prisoners go to other countries.



State News Photo by Bill Lester  
Otto Grosse, sophomore, tries on a pair of bouli shoes recently purchased by the Student Congress for the Union Bowling Alleys. The shoes were a much desired item before the appropriations bill was passed last week.

## Tax Petition, Convo, New Appointments Occupy Congress

By FRANK BUTKIEWICZ

The threat of a petition seeking a referendum on the state tax hung over Student Government this week-end, as legislators prepared for a Big Ten conference and eyed last week's appointments.

Approximately 400 signatures have been obtained on a referendum petition, according to the lawyer, a backer of the measure. Names of about 100 students are needed to make the petition effective.

Legislators and the petitioners were holding back back circulation of the petition. Student Government will take next. He said the biggest complaint against the government now is the lack of student government to handle the promise of a bigger student government.

Four student legislators will be attending a Big Ten Student Government meeting.

The State delegation to the Big Ten Student Government meeting, Student Government President, Horatio Lewis, will be attending the Big Ten Student Government meeting. Lewis is a member of the Big Ten Student Government.

Bolo said that student government publications, similar to the Statesman, will be one of the topics of discussion. Another important issue will be the National Student Association, he said.

Several Big Ten student governments have been considering the formation of a new organization, the National Student Association, which would be a national organization of student governments.

The MSC Student Government is the last of the attention local student governments have been giving to the new organization. The MSC Student Government is the last of the attention local student governments have been giving to the new organization.

Operation Skywatch is a sky-scanning civilian defense project, is now well underway here at the Michigan State Police building on Harrison Road.

Four hundred ROTC and AF-ROTC cadets are working weekly shifts scanning for enemy planes. They are part of a nationwide defense program begun last summer.

A pair of Traverse City sentinels, Cadet Capt. Howard L. Skeratt, ROTC, and Cadet Maj.

Operation Skywatch is a sky-scanning civilian defense project, is now well underway here at the Michigan State Police building on Harrison Road.







# Reds Survive Heavy Artillery Barrage

## Forces Stopped at Triangle Hill

### Attack Stalled: Chinese Capture New Hill

... Korea (AP)—Fresh Korean troops, supported by possibly the greatest artillery barrage since the Chinese stormed the front of Triangle Hill in October—only to be stopped by a torrent of heavy artillery fire.

After several hours, Allied forces around Kunhwa on the front, poured and set off every type of heavy artillery. More than 100 shells were shot at the Red gun position.

South Koreans launched a heavy attack yet made no gains in the front dis-

... only stopped the Chinese, but gained no ground. The June Russell line, a northeast spur of Triangle Hill, was held.

... the U.S. Sabre fighters, the Fifth Air Force, one MIG shot down, destroyed the other near the Yalu River.

... fighter-bombers, all of the Chinese in swarms in the central sector.

... John R. ... the Triangle Hill front, ... the Allied planes ... the Chinese artillery is the ... the battle for the ridges, ... operations time

... Rex Kwie of Quincy, ... the Chinese, ... the battle for the ridges, ... operations time

... the Chinese, ... the battle for the ridges, ... operations time

... the Chinese, ... the battle for the ridges, ... operations time

... the Chinese, ... the battle for the ridges, ... operations time

... the Chinese, ... the battle for the ridges, ... operations time

... the Chinese, ... the battle for the ridges, ... operations time

... the Chinese, ... the battle for the ridges, ... operations time

... the Chinese, ... the battle for the ridges, ... operations time

... the Chinese, ... the battle for the ridges, ... operations time

... the Chinese, ... the battle for the ridges, ... operations time

... the Chinese, ... the battle for the ridges, ... operations time

... the Chinese, ... the battle for the ridges, ... operations time

... the Chinese, ... the battle for the ridges, ... operations time

... the Chinese, ... the battle for the ridges, ... operations time

... the Chinese, ... the battle for the ridges, ... operations time

... the Chinese, ... the battle for the ridges, ... operations time

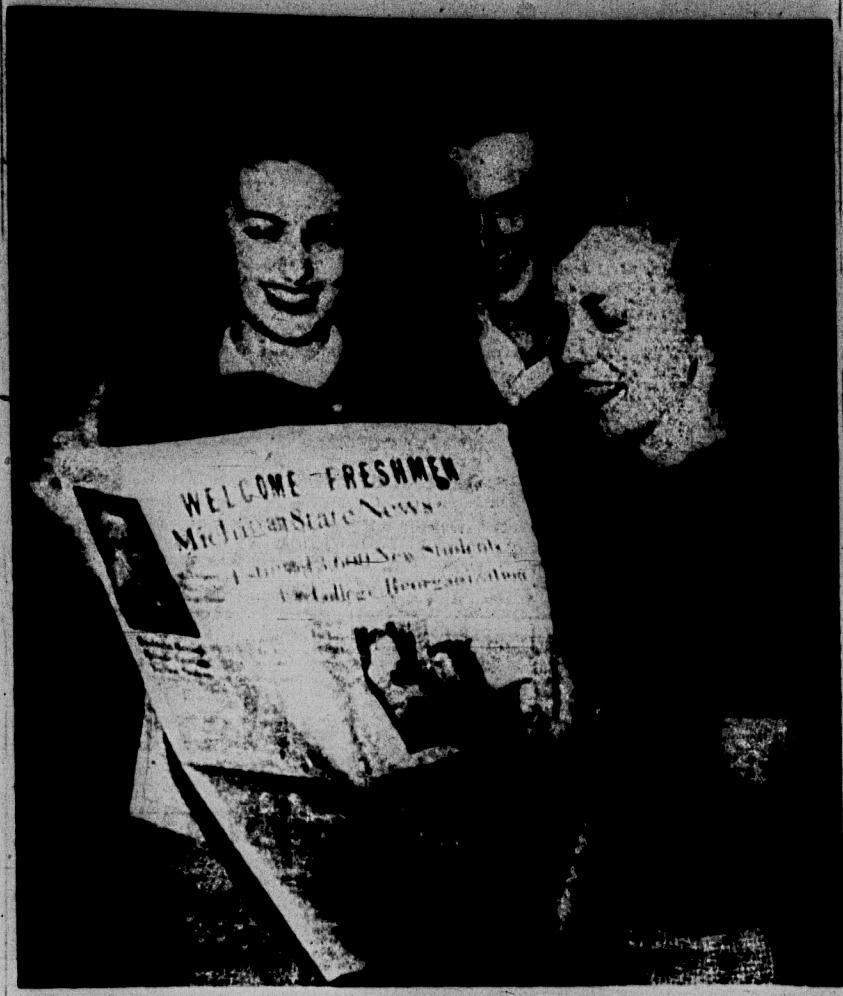
... the Chinese, ... the battle for the ridges, ... operations time

... the Chinese, ... the battle for the ridges, ... operations time

... the Chinese, ... the battle for the ridges, ... operations time

... the Chinese, ... the battle for the ridges, ... operations time

## Prize Picture



Al Hansen, Sarinaw sophomore, snapped this picture for the 1952 Wolverine and it earned him a five dollar prize contributed by four

campus publications for the best photo in October. The competition is open only to publications photographers.

## "Y" Belong?

### YW Groups Plan Term Projects

"To promote understanding and development of character through service and fellowship."

This is the aim of the YWCA. One of the most important projects which engages this aim is Freshman Camp, held the week before college opens. This activity, planned in conjunction with the YMCA, is designed to help orient freshmen to school life.

Another service project undertaken by the club is the annual Christmas party, held for the Michigan School for the Blind. The "Y" plans games, refreshments, gives factory gifts, and even has a Santa Claus.

Last year because of numerous campus activities at night, the YWCA changed its pattern of meetings.

Now, the 80 active members of the group are divided into four groups. These groups, composed of approximately 10 girls, meet one hour every week. The girls in the groups select a project which they wish to do. These services may include working with Brownie troops, helping plan parties, the annual Mother's Day Breakfast, or any other activity in which the group is interested.

All of the four groups are coordinated by the cabinet. This branch is composed of the club's officers and the four group leaders.

Once a month, a general breakfast meeting is held for the entire membership.

The advisory board for the group is made up of women on the MSC faculty and others selected from the community. The board's function is to handle the finances and aid the club.

The college "Y" is a branch of the national organization and is supported by the Community Chest. All interested girls are eligible for membership in the group.

## Wolverine Picture Schedule

MONDAY, NOV. 3  
6:30 Alpha Gamma Rho  
7:00 Alpha Phi Alpha  
7:20 Alpha Tau Omega  
7:40 Beta Theta Pi  
8:00 Delta Chi  
8:20 Alpha Xi Delta  
8:40 Delta Sigma Pi  
9:00 Delta Tau Delta  
9:20 Delta Upsilon  
9:40 Farmhouse

## Modern Apparatus Aids MSC Research

By JEAN SWANSON

Experiments in radio-active materials, light wave lengths, and ultrasonic research do not exist only in far-away laboratories and scientific journals.

These investigations have been brought down to earth on campus in the Physics-Math building.

Besides containing the most modern classroom equipment in the country, the Physics Department has extensive facilities for advanced research by graduate students and faculty members.

In an impressive two-story room there is space for a nuclear accelerator to be built someday for atomic research.

An electron-microscope, used mainly in biological studies, is so sensitive that the operator has to manipulate some of its controls in an adjoining room.

Besides the electron-microscope, other major pieces of equipment include a x-ray unit, used in analysis of crystals, microwave laboratory for studying the structures of liquids and solids, and a spectrometer for measuring infrared and ultra-violet light wave lengths.

Supplementing more spectacular equipment are routine materials used mostly in classroom demonstrations. The storage rooms which house this equipment reveal articles all the way from those understood only by a physicist to such well-known ones as xylophones and metronomes.

Darkrooms are scattered throughout the building. They are for optics classes and are also used to prepare pictures for show-case displays, lecture slides, and illustrations for published articles.

There is a protractor machine shop, and the physics department has a place for graduate students to make their own experimental materials from metal or wood.

Switchboards are a necessary part of both classrooms and labs. A master switchboard in the basement sends every kind of current that might be needed to each room that has its own junior-sized switchboard.

The tick-tick-tick of a vacuum pump can be heard in the building's basement. This pump is a traditional piece of equipment because many experiments must be conducted in an air-free environment.

Another aid to physics students is the library. A branch of the main campus library, it is stocked with reference books, abstracts and scientific journals.

## MSC Lecturer To Travel West

Robert W. McIntosh, assistant professor of the Conservation Institute, Extension Service, will present a series of four lectures at the California Tourist Court Management Short Course this week.

He will speak on business management and simplified accounting for motels.

The course, which will be held at the Mission Inn in Riverside, Calif., is sponsored by the California Tourist Court Journal and the California Motel Management Association. It is primarily designed for motel operators in the southwestern states.

McIntosh is attending the course in co-operation with the Extension Service and Tourist and Resort program of the college.

He has previously given three lectures on the subject in connection with one of the projects of the Extension Service.

Only 44 Shopping Days until Christmas . . .  
Avoid late delivery disappointments . . . order now!

Compacts, Cuff Links, Tie Bars, Evening Bags, Billfolds, Necklaces, Cigarette Lighters, Stationary, Rings, Bracelets, Party Favors . . .

Order created and personalized gifts for your friends . . .  
A complete selection of gift items in the current Balfour Bluebook . . . Write for your copy now!

L. G. BALFOUR COMPANY  
1321 South University Avenue  
Ann Arbor, Michigan

Bob Carlson  
M.A.C. Representative

## Adlai, Ike Wait Decision Of 55 Million Voters

### Uncertainty Prevails as Registration Scales New Peaks in Many States

America's voting millions, probably more of them than ever before in history, will choose Tuesday between Gen. Dwight D. Eisenhower and Gov. Adlai E. Stevenson for President.

Only flashes of wind-up oratory are left—last minute efforts to pull out the vote or sway the undecided. And then it is up to the people themselves, an estimated 55 million of them, to decide whether it is to be Stevenson and another four years of Democratic rule or Eisenhower and a change to the GOP.

From both sides in the titanic political struggle came just what anyone would expect—predictions of victory for their man. But now the decision is pretty much up to millions of individuals. For most of the fervor and the furor of the presidential campaign, subdued Sunday in the calm of a quiet autumn Sabbath.

Gen. Eisenhower attended services in St. Paul's Chapel at Columbia University in New York City. Stevenson went to the Unitarian church in his old home town at Bloomington, Ill., a church his grandfather, Jesse Fell, helped found in 1859.

Eisenhower heard a sermon built around the thought that there is no escape from a decision on the issues of the campaign. Stevenson heard one that described men as masters of their own destiny and cautioned against blindly following the party line.

For the campaign finale, Stevenson goes to Chicago Monday night, while Eisenhower winds up in Boston. Each will appear on nationwide television-radio programs with his vice presidential running mate—Sen. John J. Sparkman of Alabama for the Democrats, Sen. Richard M. Nixon of California for the Republicans.

All around the political circuit Sunday was pretty much a day of rest. And for the most part, there will be little campaigning Monday.

President Truman was home from the political wars, too, resting up at Independence, Mo., from thousands of miles of whistle-stop campaigning for the Stevenson cause.

All told, Truman, Stevenson and Sparkman put in something like 85,000 miles on the road and made more than 800 campaign speeches. Eisenhower, Nixon and Sen. Robert A. Taft of Ohio covered about 103,000 miles and got off nearly 650 speeches.

Registration figures in state after state climbed to new peaks. More than 75 million persons made themselves eligible to vote. And they were expected to do so in record numbers, far surpassing the previous high mark of 49,320,000 in 1940—the year of the Roosevelt-Wilkie campaign.

Women outnumber men on the list of eligible.

Which way will the independent vote swing? Where will the people who make up their minds at the last minute, or who decline to tell anyone their preferences, wind up?

Those are factors that kept the professional politicians and the pollsters guessing right to the end.

During 1951, the American Bible Society sent 943,241 Bibles to the American armed services.

## New Award Openings Available

### Graduate Office Has Latest Information

Those interested in applying for scholarships, assistantships, and fellowships for the school year 1953-54 should investigate the possibilities now, according to Dean Thomas H. Osgood of the Graduate School.

Openings are available to seniors, graduates, and faculty members. Information may be obtained at the Graduate Office, 112 Merrill Hall. The following are some of the announcements that have been received:

The National Research Council administers post-doctoral fellowships in cancer and radiological research, tuberculosis, medical and natural sciences. Also, the Council recommends pre-doctoral fellowships in electronics and associate post-doctoral fellowships in tuberculosis.

The Frank Jewett fellowship is available for physical science study and the Zonta International offers a scholarship in memory of Amelia Earhart for graduate study in aeronautical engineering.

Research awards in education are presented by Phi Lambda Theta and General Electric. Also offered are fellowships in Latin America, and Yale University administers aid in major fields of liberal arts and sciences.

Other associations granting scholarships and fellowships are the Rotary Foundation and American Association of University Women.

## Officials Set Career Talks

Pres. John A. Hannah, and Dean C. E. Erickson, Basic College head, will speak on behalf of the Career Carnival Wednesday night in Fairchild Theater. About 1,600 students are expected to hear the talks in preparation for the carnival which is set for Nov. 19, 20 and 21.

Non-preference students and those who have not chosen a profession are especially encouraged to attend, according to Rod Black, carnival director, who will also speak.

## News for Joe: Some Chinese Aren't Red

HONG KONG (AP)—Communist China's chief of secret police says the country is still full of anti-Reds, although tens of thousands were shot and hundreds of thousands were sent to labor camps in the great 1950-51 purge.

## Whistle-Stopper



Miss America of 1952, Neva Jane Langley, arrived today for a four-day stay in East Lansing as part of her nationwide tour. The Wesleyan Conservatory of Music student is a guest of Delta Tau Delta fraternity and will stay in Kellogg Center. Miss Langley, who entered the contest as Miss Georgia, hails from Macon.

52 Days 'Till Christmas  
BEAR BRAND CLIPCAP Ages 6 - 60  
Knitter Crooner - Moulton Trim - Assorted Colors  
**KAY'S KNIT SHOP**  
203 M.A.C. PHONE 8-1917

**Spartans Can't Lose**  
with  
**Our  
Brake Adjustment  
Special**

- Adjust Foot Brakes
- Remove Wheel, Inspect Lining
- Add Brake Fluid if Needed
- Inspect Master Brake Cylinder
- Thoroughly Road Test Brakes

ONLY 98¢  
**DEAN & HARRIS**  
"LANSING'S EXPERIENCED FORD DEALER"  
Grand River at Cedar Phone 2-1604  
OPEN TILL 12:30 MONDAY THRU FRIDAY

**NOW! STATE** Shown at 1:15 - 3:15 - 5:20 - 7:20 - 9:25  
MARTIN and LEWIS  
SKY HIGH FUN  
JACKS  
EXTRA! Late News Musical  
SUNDAY - "JUST FOR YOU" WITH BING CROSBY

**MICHIGAN**  
★ NOW SHOWING ★  
Betty Hutton  
Ralph Meeker  
in  
**"Somebody Loves Me"**  
Technicolor  
EXTRA - EXTRA - EXTRA  
On Stage in Person  
Tuesday, Nov. 4 only, at 9 P.M. Miss America of 1952 and Miss Homecoming Queen of 1952 will be presented from our stage by Mayor Ralph Crego.

**CAPITOL**  
Nov. 2 - 5 (4 Days)  
**"The Merry Widow"**  
In Technicolor  
Lana Turner  
Fernando Lamas  
and  
**"Duel at Silver Creek"**  
In Technicolor  
Audie Murphy  
Faith Domergue

**LANSING**  
NOW SHOWING  
(Double Feature Program)  
**"Rose Bowl Story"**  
Marshall Thompson, Vera Miles, Richard Rober, Natalie Wood  
**"When I Grow Up"**  
Bobby Driscoll, Robert Preston, Martha Scott, Charles Grapewin

**GLADNER**  
NOW SHOWING  
Elizabeth Taylor  
Robert Taylor  
in  
**"Ivanhoe"**



# Kepford Notches Third Straight As Harriers Swamp Notre Dame



With basketball just around the corner, Coach Pete Newell is busy getting the Spartan team in shape. Three players expected to see plenty of action this winter are (l. to r.) Keith Stackhouse, team scoring leader last year, Al Ferrari, who was brought up from the freshman squad towards the end of the season, Coach Newell, and Bob Armstrong, who is slated to take over Bob Carey's center slot this year.

## Yogi-talk Polls and Statistics

By ALEX LAGGIS  
State News Sports Editor

Michigan State's monopoly of the national polls and the NCAA statistics may be threatened after last Saturday's close game.

The Spartans went into the tilt way ahead of the pack in total offense with a 467.6 yards a game average. Purdue's stout defense held State's mighty offense to almost half that amount, 273 yards.

In rushing, State is sure to drop from seventh place after collecting 197 yards on the ground, MSC's previous average was 265.6.

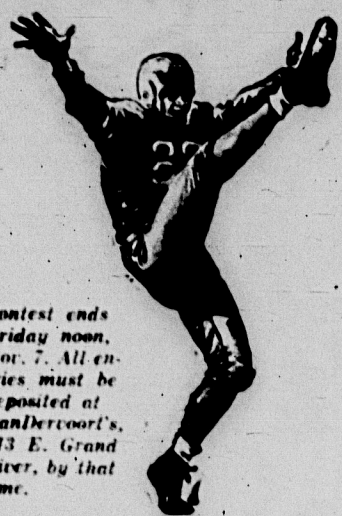
In the polls, Maryland, after coasting to an easy 34-7 victory over an over-rated Boston University crew, is sure to come closer than in previous weeks in the battle for the number one spot. Oklahoma romped over Iowa State, 41-0 and is pushing Maryland. Other teams that still have a chance of overtaking the Spartans are Georgia Tech, Southern Cal. and UCLA. Purdue might climb a notch if the Spartans retain their number one rating. Georgia Tech could jump up from their number four position after beating previously undefeated Duke, 28-7 in the top game of the south. Southern Cal. didn't play and UCLA plastered California, 28-7.

**Quotable Quotes Department** . . . After reviewing the fact that State turned in a near-perfect performance against Texas A & M when the television cameras were around, Biggie Munn commented, "I sometimes think our boys must be ham actors at heart the way they reach the heights for television."

Commenting on the unexpected transfer of Michigan star Tony Brannoff from State before receiving a knee operation in University Hospital last winter, Biggie said, "He visited us on the Michigan State campus. We liked him and thought he liked it here and might stay."

"However," added the Spartan coach, "We didn't have surgery on the campus."

**VanDervoort's**  
MSC SPORTS  
HEADQUARTERS



## SPARTAN FOOTBALL CONTEST

Week of Saturday, Nov. 8

Anyone Can Enter—  
Anyone Can Win!

This Week's Winner Receives Another  
Buck Skin Joe Sport Shirt, a \$7.95 Value

### OFFICIAL ENTRY BLANK

1. Mich. State	Pts. — Indiana	Pts.
(Just check winner of remainder)		
2. Arkansas	<input type="checkbox"/> Rice	<input type="checkbox"/>
3. Auburn	<input type="checkbox"/> Mississippi State	<input type="checkbox"/>
4. Baylor	<input type="checkbox"/> Texas	<input type="checkbox"/>
5. Army	<input type="checkbox"/> Georgia Tech	<input type="checkbox"/>
6. California	<input type="checkbox"/> Washington	<input type="checkbox"/>
7. Michigan	<input type="checkbox"/> Cornell	<input type="checkbox"/>
8. Duke	<input type="checkbox"/> U.S. Naval Acad.	<input type="checkbox"/>
9. Pennsylvania	<input type="checkbox"/> Georgia	<input type="checkbox"/>
10. Illinois	<input type="checkbox"/> Iowa	<input type="checkbox"/>
11. Kansas	<input type="checkbox"/> Nebraska	<input type="checkbox"/>
12. Kentucky	<input type="checkbox"/> Tulane	<input type="checkbox"/>
13. Tennessee	<input type="checkbox"/> Louisiana State U.	<input type="checkbox"/>
14. Minnesota	<input type="checkbox"/> Purdue	<input type="checkbox"/>
15. North Carolina	<input type="checkbox"/> Virginia	<input type="checkbox"/>
16. Northwestern	<input type="checkbox"/> Wisconsin	<input type="checkbox"/>
17. Notre Dame	<input type="checkbox"/> Oklahoma	<input type="checkbox"/>
18. OSU	<input type="checkbox"/> Pitt	<input type="checkbox"/>
19. Oregon State	<input type="checkbox"/> UCLA	<input type="checkbox"/>
20. S. Cal.	<input type="checkbox"/> Stanford	<input type="checkbox"/>

Name \_\_\_\_\_  
Address \_\_\_\_\_  
Deposit Entry at VanDervoort's,  
213 E. Grand River, by noon Friday

TROPHIES, AWARDS, PLAGUES . . .

Come to VanDervoort's for the Best

... Discount to  
Organized Groups ...

Choose from nationally famous Dodge and Noble trophies at VanDervoort's. You can select trophies from practically any price range, for any occasion. Ask Brick or Larry for details.

## State Monopolizes Top Positions in Easy Win

By JOHN CORDELLI

In a final tune-up before the Big Ten meet Nov. 14, the Michigan State cross-country team took five of the first six places to overwhelm Notre Dame, 19-39, at South Bend last Saturday.

Leading the Spartans to their near-sweep was Capt. Jim Kepford, scoring his third win in as many meets this season. It was not Kepford's fastest race this year, but it was his closest. He just edged Notre Dame's sensational sophomore, Jack Alexander, by a foot.

Kepford, Alexander and State's Lyle Garbe ran neck and neck for three and a half miles. Then Kepford and Alexander made it a two-man battle, exchanging the lead several times in a sprint to the tape.

By taking out his narrow victory, Kepford gained revenge for last year's three-yard defeat at Alexander's hands. His time over the four-mile course was 20:10.5, just one-tenth of a second better than Alexander. Last week Kepford broke the MSC varsity and dual meet record with 20:06.6, on the local course.

Garbe pulled up in third place with a respectable 20:23. He was followed in order by Spartans Wayne Scott, John Cook and Mickey Waller. All were clocked in better than 21 minutes. Cook and Waller finished in a dead heat, in 20:59.5, to complete the list of MSC scorers.

Dick Jarrett and Ed Townsend finished out of the scoring for State, ending up eighth and fifteenth, respectively.

The other positions won by the Irish were seventh, ninth, tenth and eleventh.

Four other Spartans ran in the meet, but did not count in the scoring. They were Ed Houldsworth, Steve Little, Gene Parker and John Procter.

## Duke's All-American Guard Out For Season

DURHAM, N.C. (AP)—Bobby Burrows, Duke's candidate for All-American guard, suffered a broken ankle in the Georgia Tech game Saturday and will be lost for the rest of the season.

## Sports COED CORNER

By PAT ROGERS

CHI OMEGA'S Esther Lucke chalked up 22 points on the swimming scoreboard to keep her sorority in first place with 73 points Wednesday night. Julie Moninger added 20 for the winners.

A closer second place than last week's was threatened by Pi Beta Phi's 62 points, edging out Alpha Chi Omega, formerly in the second slot.

Susan Van Noppen tallied a 17 score as a Pi Beta Phi entry. She took a first in diving and Jani Andrus came second for the runners-up.

Included in Chi Omega's seven first places were Miss Lucke in 30 yard free style, 60 yard free style and crawl form; Miss Moninger in breast stroke form and racing; and Judy Nelson's side stroke form.

Back stroke form was topped by Kristine Olson for Pi Beta Phi.

Three Chi Omega teamsters won the medley relay for a second time.

Sororities will compete again tonight and dormitories will swim Wednesday, not Monday as stated yesterday.

The following week finals will be entered by the two top dormitories and two leading sororities.

Sorority and dormitory volleyball went into its fourth round Thursday night. Preliminaries will end this week.

Results by blocks follow:

**BLOCK I**  
East London 19, Kappa Alpha Theta 11  
West London 23, Chi Omega 22  
Mason 37, Alpha Gamma Delta 1  
**BLOCK II**  
Gilchrist 28, Kappa Delta 21  
North Williams 38, Sigma Kappa 15  
West Yakeley 38, Gamma Phi Beta 12  
**BLOCK III**  
Pi Beta Phi 30, Alpha Chi Omega 26  
North Campbell 36, Kappa Kappa Gamma 15  
West Mayo 27, Alpha Omicron Pi 21  
East Yakeley 39, Alpha Phi 27  
South Campbell 2, Delta Zeta 6 (default)

Michigan State football teams have played 98 different opponents and 50 of these have failed to win a game from the Spartans.

## 4 DAY LAUNDRY SERVICE

LEN KOSITONEK'S  
VARSITY SHOP

Win A Smile

With

A Clean Shirt



**Louis Laundry & Dry Cleaning**

8-4024  
623 E. Grand River

Across from  
Home Mgt. Bldg.

## As IM Football Enters Playoff Stage



Ken Stannick, East Shaw 2 passer, taken over the head of an onrushing opponent in a dormitory league game. Most block winners have now been decided as the IM football season enters the title-deciding stage.



Snyder 13 became the first dorm champs crowned this year as they slipped by Snyder 12, 13-7 in a game played last Wednesday. The new titleholders took over the honor as Snyder 14, last year's champs, were never in the running. The champs

are: (back l. to r.) Bill Leisher, Warren, Haren, Jesse Curtill, Win. Kuhl, Tavarozzi, Jim Hobbick (front l. to r.) Leon Sanderson, George Rosinara, Carlton, Howard Scheppeler, John Sam

## 49ers Upset

# Hart's Catches Bounce Browns

## Steelers Edge Redskins, Cardinals, Eagles Lose

DETROIT (AP)—End Leon Hart's leaping fingertip in the second period and his easy catch of another touchdown pass from Bobby Layne in the fourth period put the Detroit Lions to a 17-6 victory over the favored Cleveland Browns before a sell-out crowd of 56,029 fans yesterday.

The defeat was only the second for the Browns, leaders in the American Conference of the National Football League.

The savage defensive play of end Jim Duran and tackle Thurman McGraw crushed the Browns' hopes of coming from behind in the second half.

Pat Harder, booted a 43-yard field goal as the Lions went ahead 10-3 at half time. Harder converted twice.

Leon "The Toe" Groza kicked 12-yard and 41-yard field goals for the Browns' only points. He missed on two other tries.

The New York Giants, with Chuck Connors pitching two scoring passes and Edie Price tacking on two more touchdowns, stole six Chicago aerials and recovered four of their fumbles to flatten the Cardinals, 28-0.

The Giants' touchdown favorite despite their 24-23 loss to the Cardinals in New York, earlier, shut into a share of the American Conference lead in the National Football League with Cleveland.

The Washington Redskins went into the last period trailing the Pittsburgh Steelers, 24-7, but came within a point of tying the score. The Steelers grimly hung on to win 24-23.

The Redskins had a slim chance of winning the National Football League game. But Ed Russell, Pittsburgh back, inter-

Handling the Texas sixth straight loss in National Football League play, bringing their own record 5-5, the Rams defeated the scoreboard with five touchdowns for a 35-point lead.

George Blanton, punter, specialist for the Rams, booted a 48-yard punt in the fourth period, setting up his team's winning upset victory over the unbeaten San Francisco 49ers.

Herman Clark set the record for the winning punt, intercepted a pass by Albert Ellis in four minutes to go on San Francisco's 49.

The Bears moved up from where Blanton's punt placed-kick the Bears to the uprights.

Billy Wells, one of the performers of the "Light Brigade" cartoon, been named "Memorable Man" by appreciative sportsmen.

For Smoothest Shaves You Ever Had.  
Do As Your Barber Does!

Use 'Push-Button' Lather

## AERO SHAVE

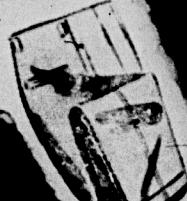


NO BRUSH—NO GREASE—NO RAZOR CLOG

Get smooth, slick shaves the professional way...with AERO SHAVE! Gives you rich, creamy lather for shaving comfort! Contains 5 beard softeners plus soothing Lano-Lotion! Try it!

DO AS YOUR BARBER DOES—USE "PUSH-BUTTON" LATHER!  
**AERO SHAVE**  
SENSATIONAL NEW LATHER BOMB

59¢



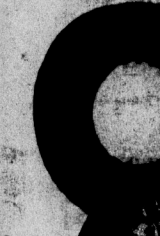
## SLACKS

Gabardines  
\$5.95 up

Len Kositonek's  
VARSITY SHOP  
The Small Shop with Big Values

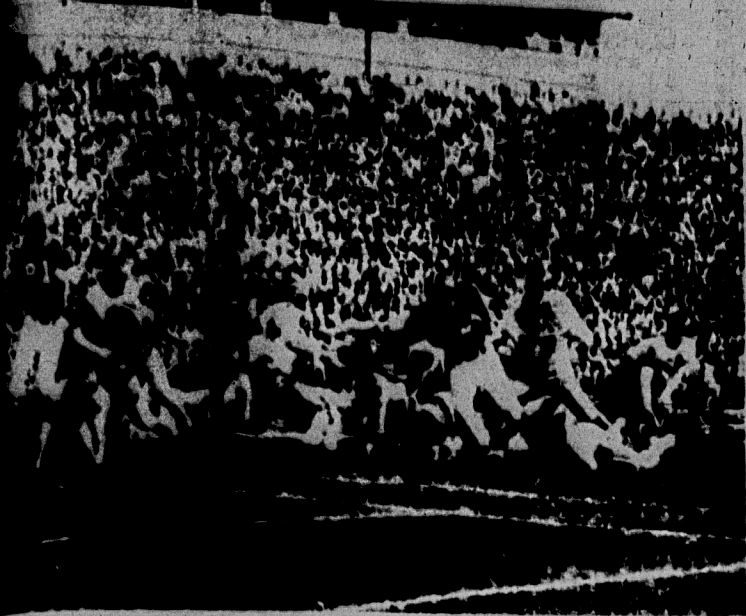
Gifts  
The Ki

GRAND  
Set of  
KELLY SAIL  
OR  
SUPER R  
Size Customer





# ... Spartan Defense Halts Purdue Drive ...

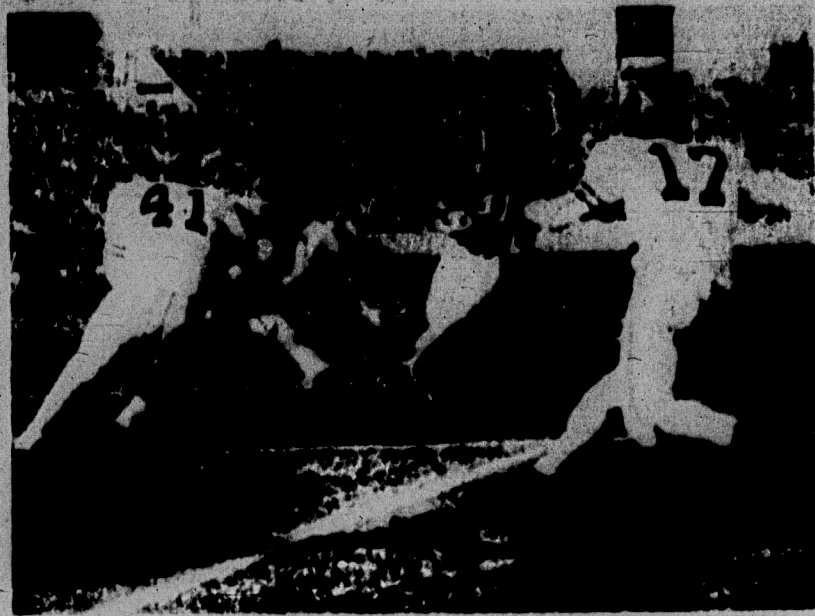


Wells (14) Spartan right half-back, free himself from a shoe-string by a Purdue defender. The ball was

placed down on the three-yard line from where Capt. Don McAuliffe plowed over for State's first score in the first quarter.



Paul Dekker, giant Spartan end, uses his height and sure fingers to full advantage as he leaps in the air to bring in a pass from Tom Yewie. The play came in the second period and was good for a first down.



Aided by a block by Capt. Don McAuliffe, quarterback Tom Yewie (41) heads for the end zone and the Spartan's second and winning score. Yewie fumbled as he was hit, but Larry Fowler recovered for the Spartans. However, Yewie was officially credited with the score.

## Sports Wire...

YONK, N. Y. (AP)—Charles ...

... The Toronto ...

... The Chicago ...

## Purdue Falls, 14-7

(Continued from Page 1) ...

Purdue scored the first time it got hold of the ball in the third quarter. State received the kickoff and could move only seven yards in three plays. Yewie dropped back to punt and Bollinger and James Wojciechowski rushed in to partially block the kick, which rolled out of bounds on the Spartan 47 yard line.

Purdue moved the ball over in six plays, featuring a 34 yard pass from Samuels to end Pernie Flowers. Earl Heninger carried the ball over from the one-half yard line, and Samuels converted.

From then on, the game was a see-saw battle with neither team able to start a scoring thrust.

However, midway in the final period, State began to ...

With third down coming up and nine yards needed for a first down, Yewie threw to Dekker in the end zone. Safetyman Phil Matczak intercepted the pass and Purdue took over on its own 20. From there, the Boilermakers moved to State's eight, where Weaver stepped in to halt the threat.

Michigan State's high scoring offense was disappointing Saturday and failed to give Yewie much protection when he dropped back to pass. The Spartans picked up 197 yards on the ground as compared with their season average of 265.6 yards per game. State accounted for 76 yards by passing.

The Spartans face another Big Ten opponent next week, when they again invade the Hoosier state to face Indiana University at Bloomington.



DOUG WEAVER saves the day

## IM Schedule

MONDAY, NOV. 3

TOUCH FOOTBALL FIELD

10 East Show 3 vs. East Show 2

11 West Show 7 vs. West Show 5

12 Phillips 1 vs. Phillips 2

13 Phillips 3 vs. Phillips 4

14 Abbot 17 vs. Abbot 18

PATRONIZE STATE NEWS ADVERTISERS

## MSC - Purdue Game Sidelights

Michigan State had a record size ...

As an example of how tough Michigan State's defense was Saturday, Purdue averaged less than one yard per carry. The Boilermakers tried 34 plays on the ground and picked up only 31 yards. During the entire first half Purdue picked up only five yards by rushing.

Michigan State's victory Saturday marked the first time that the Spartans had defeated Purdue on home grounds. It also evened the over-all series at three victories apiece, along with one tie.

Earle Edwards, Michigan State's end coach, rated Pernie Flowers as the best end the Spar-

... caught six passes good for 81 yards.

The 6' 11" end made several outstanding catches, including a leaping one-handed catch in the first period. Flowers leads the Big Ten in scoring with 42 points.

Michigan State has now beaten the two top teams in the Big Ten this season. Before Michigan was defeated by Illinois Saturday, the Wolverines were tied with Purdue for leadership of the Western Conference.

For the first time this season, Michigan State met an opponent who made more first downs, 13 for Purdue to 12 for MSC. State's total offense was 277 yards, Purdue's 224.

Purdue attempted the fat total of 31 passes, completing 17 for 193 yards. The best passes, however, were out-of-ordinary types like the screen pass and the forwards with

laterals tucked on the end.

The crowd of 49,000 was the largest of the season at Purdue, even bigger than for the Notre Dame game. An indicative of the Spartans' swelling gate appeal, the temperature on the field was close to 80 degrees, an extraordinary example of Indian Summer in November.

The team came through its victory Saturday without any serious injuries.

Except for Burns and Bremer, the squad was described as in good shape. The only new injury was a bruised leg suffered by Wells.

Two other players aggravated old injuries. They are end Ellis Buckett, with a twisted ankle, and fullback Wayne Benson, who is limping from a knee injury.

... the past to save Michigan State's winning streak, was awarded the ball Saturday following the game at Lafayette. Ind. Weaver is the only Spartan on the society who claims to have hit home.

Previous to Weaver, Capt. Don McAuliffe (Michigan), Gene Leckert (Oregon State), Willie Throver (Texas A & M), Leroy Baker (Syracuse), and Don Bobo (Penn State) had been awarded game balls this season.

Tom Yewie hit on six of 12 passes. Billy Wells hauled in two of the aerials.

None of the Spartan backs had a very successful day. Capt. Don McAuliffe had 39 yards to show for 12 tries. Wells went 48 yards or 15 attempts for the most yards.

Quarterback Dale Samuels, who is the Big Ten's leading passer, threw 26 passes and completed 14 for 149 yards.

# GALA OPENING

COME IN- AND SEE US  
NOVEMBER 6th, 7th AND 8th  
SOMETHING FOR EVERYONE

Gifts For  
The Kiddies

Favors For  
The Ladies

GRAND PRIZE  
Set of 4  
KELLY SAFETRAC  
or  
SUPER FLEX  
Size Customer's Choice

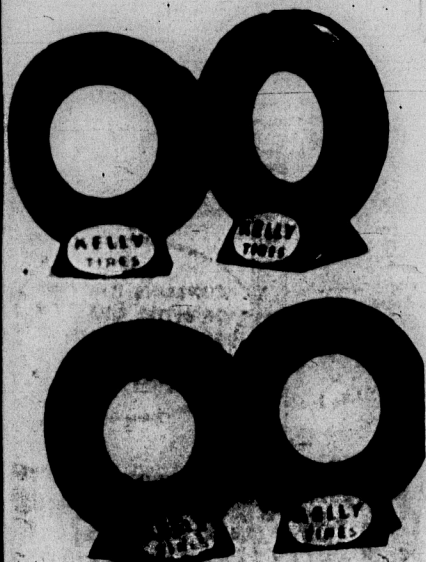
ADDITIONAL PRIZES  
20 Five Gallon Cans  
SUNOCO NEW  
H.D. DYNALUBE



# BONNER'S SUNOCO SERVICE

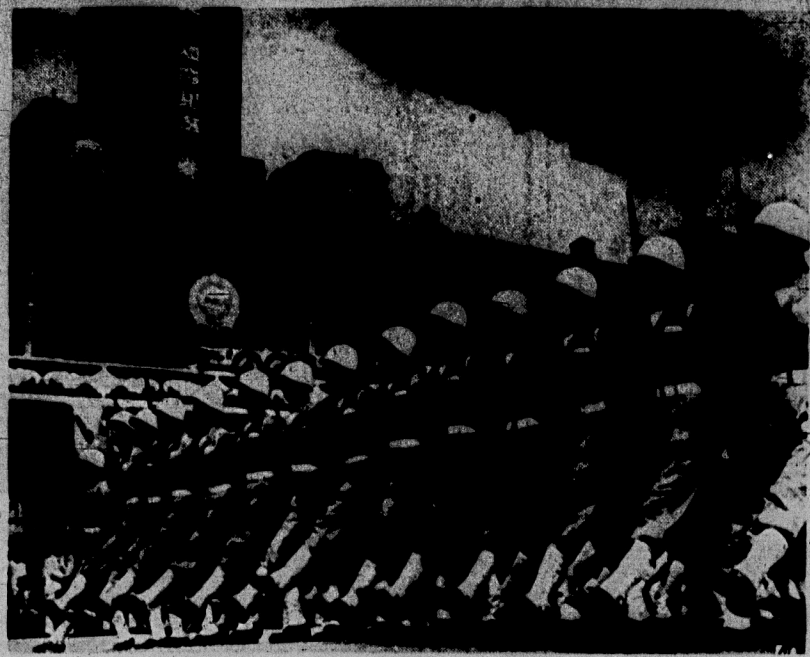
GRAND RIVER AT BOGUE

JUST EAST OF THE CAMPUS, EAST LANSING, MICH.





## Chiang's Marine Corps



Nationalist China's marines—youngest branch of Generalissimo Chiang Kai-shek's armed forces on Formosa—pass in review during a celebration of free China's 41st independence day. The reviewing stand is located outside Nationalist headquarters at Taipei, Formosa.

## MSC Hosts Sail Club Regatta

Bowling Green, Irish Take Honors

Bowling Green went home with first place and the circulating trophy from Michigan State's Invitational Regatta held at Lake Lansing this weekend.

Bowling Green had a total of 58 points, Notre Dame 57, Northwestern 55, University of Michigan 53, Michigan State 49, and Ohio State 46.

Sailors were aided Saturday by fine weather, although the wind was light. Sunday the wind was heavy enough to become a handicap to the sailors. Bill Brett, publicity chairman, remarked that "we were amazed that only one boat capsized."

High point skipper for the Regatta and for B division was Skipper Fisher, from Notre Dame. Dellen, from Bowling Green, was high in the A division.

Michigan State's top skippers were Harold Braudy, Grand Rapids freshman, with 24 points, Carol Stewart, Commodore of the Sailing Club, 12 points, and Barbara Slocum, Grosse Pointe senior, 13 points.

The next event for the Sailing Club will be the Ohio State Invitational Regatta, which will be held Nov. 15 at Columbus. Plans are also being made to attend the Annapolis Invitational Regatta Nov. 22 and 23.

Last fleet of the season will be the Thanksgiving Regatta at Chicago where sailors will compete for the championships.

## Meat Judging Team Entered in National Contest

The Meats Judging Team will compete in the Eastern National Intercollegiate Meats Judging Contest at Baltimore, Md.

R. J. Deane, instructor in Animal Husbandry, will coach the team on their Nov. 16-19 meet.

The four members for the session have not been announced.

## Cancer Victim



Dixie Lee Crosby, wife of crooner Bing Crosby, died Saturday from what was described by doctors as a "generalized cancer condition." The former musical comedy star would have been 41 tomorrow. Her famous husband and four sons were at her bedside when she died.

## 'First Lady' Candidates Both Warm, Engaging Hostesses

WASHINGTON (AP)—The next hostess in the White House will be a cosmopolitan and a good handshaker. That holds true whether Adlai Stevenson or Dwight Eisenhower is elected President Tuesday.

Both Mamie Doud Eisenhower, wife of the Republican nominee, and Elizabeth "Buffy" Stevenson, sister of the Democratic candidate and his official hostess as governor of Illinois, are qualified.

They look you directly in the eye. They smile easily. Both have a firm handshake that suggests warm personal interest. And they share a liking for people and parties, an attribute which is at least desirable in the job.

Their gifts in the art of handshaking itself assumes real importance when it is realized that last May, Mrs. Harry Truman shook hands with about 10,000 people at receptions and teas in the newly opened White House.

The role of first lady or official White House hostess is an exacting one. It is hard work over

long hours. Her manners are watched, her words quoted and her hair style copied.

Mrs. Ives, wife of a retired career diplomat, and Mrs. Eisenhower have had extensive experience in entertaining.

Both have lived in many parts of the world. The Eisenhowers during their military days were stationed at numerous posts in the United States, in Panama and in the Philippines. While Eisenhower was NATO commander, they lived outside Paris.

Before Ernest Ives retired in 1935 from the diplomatic service, he and Mrs. Ives lived in Copenhagen, Stockholm, Belfast and Pretoria, South Africa. Mrs. Ives was presented at court in several European countries.

Stevenson was divorced from Ellen Borden Stevenson, Chicago socialite and mother of their three sons, shortly after his election as governor of Illinois. He turned to his sister for help in official entertaining.

## Group Seeks Dickson For Tuesday

Dr. David W. D. Dickson, "MSC Professor of the 1951-52," will speak at Place of Religion in Learning tomorrow in the Union at 8 p.m.

The MSC chapter of Delta Psi, national educational organization, is sponsoring the which is open to the public.

Dr. Dickson is the first speaker who will speak the general topic "Education a World Point of View."

Now an engineer in California, he was recently returned to his native land. He has been in the business for

## Bridge Party To Open Fund Drive for FWA

A telephone bridge party will start this year's drive for funds by the Faculty Women's Association. Following the "come over now as you are and plus bridge" theme, the Nov. 7 party will provide funds for their newly furnished room on the third floor of the Union. An apron bazaar and rummage sale are projects planned for later in the term to carry out the drive.

The Association's fall program has included an open house, canoe color tour on the AnSable River, a Bohemian dinner and mixer and a talk by Prof. Paul Bagwell of the English Department.

At the last meeting, Dr. Walter Adams of the Economics Department and Dr. Lefter Jerngson of the Political Science Department discussed on a non-partisan basis the highlights of the national election.

The next monthly luncheon meeting is Nov. 4. All faculty women, secretaries, administrative deans and women members of the research staff are urged to join FWA, said Miss Ann Hixon, Food and Nutrition instructor and program chairman.

## French Film Shown Tonight

The French film "Orpheus" will be shown tonight at the Fairchild Theatre at 7 and 9 p.m. The play is directed by Jean Cocteau and stars Jean Marais, Marie Casares, Francois Perier and Marie Deny.

## Coffee Hour Scheduled Today

Herbert Garfield and George Fejknop of the Political Science Department will speak on the "1952 Presidential Campaign Election" at the Political Science coffee hour this afternoon from 4-5:30 in Room 21 of the Union.

All interested students are invited.

## Two Local Game Areas Open for Public Hunting

By BOB HERMAN

Two public hunting areas within 15 miles of East Lansing provide MSC students with week-end entertainment possibilities.

Located 10 miles north of East Lansing is the Rose Lake Experiment Station. Operated by the Michigan Department of Conservation, it has more than 500 acres of woods, swamps and crop land.

Hunters are required to register before hunting, and are issued tags for the game they're after. All kill must be declared.

The State Game Farm is another area posted for public hunting. It is a several hundred acre tract located southeast of Mason, Mich.

Guns transported out of hunting seasons should be either dismantled or packed in a case, warned Dale Benjamin, Labor County game warden.

In closed seasons permits are needed for target shooting in most areas. The previous season's license is usually enough. Benjamin recommended checking with county conservation officers when in doubt.

Open seasons for pheasant and quail will continue until Monday, Nov. 18. Pheasants may be hunted until Jan. 31 of 1953.

## Students Debate Political Issues

Corruption in Our Government was the topic of a debate sponsored by the young Republicans Club recently in the Union.

Republican speaker, Horatio Lewis, and Republican speaker, Horatio Lewis, asserted that government has been corrupted through Truman's administration. This, they said, has had bad effects on the nation, and the Democratic Congress has failed to cure it.

Simon O'Shea and Gene Welczek, representing the Democrats, answered these charges by saying that the corruption was exaggerated by the press. And that there was also corruption in the Republican party.

## Placement Bureau Interviews

November	Name of Company	Location
5	Westvaco Chemical Div.	New York City
5	East Machy Corp.	New York City
5	Western Union Telegraph Co.	New York City
5	Prior Waterhouse & Co.	Detroit
5-6	Enclad Road Machinery Co.	Cleveland, O.
5-6	McDonald Aircraft Co.	St. Louis, Mo.
6	Peoples Gas, Light & Coke Co.	Chicago, Ill.
6	Oscar Mayer Co.	Madison, Wis.
6	Ord. Corps, Detroit Arsenal	Centerline
6	U.S. Naval Air Station	Grosse Ile
6	(Will interview Rm. 35, Union)	
6	Spery Gyroscope Co.	Great Neck, N.Y.
6-7	Atlantic Refining Co.	Dallas, Tex.
6-7	Monasita Chemical Co.	St. Louis, Mo.
7	Columbia Gas System Serv. Corp.	New York City
7	Haskins & Sells Co.	Detroit
7	Scovell, Wellington & Co.	Detroit
7	Standard Oil of Indiana	Whiting, Ind.
7	American Steel & Wire Co.	Cleveland, O.
7	Boeing Aviation Corp. (Products also)	South Bend, Ind.
10	Surface Combustion Co.	Toledo, O.
10	Elmo Corp.	Salt Lake City
10	General Fireproofing Co.	Youngstown, O.
10	Youngstown Sheet & Tube Co.	Youngstown, O.
10-11	Ortho Pharmaceutical Corp.	Raritan, N.J.
10	Boeing Aircraft Co.	Seattle, Wash.
10	Philo Corp.	Philadelphia, Pa.
10	Westinghouse Air Brake Co.	Wilmington, Pa.
10	Union Switch & Signal Co.	Swissvale, Pa.
10	(Div. Westinghouse Airbrake Co.)	
10-11	General Electric Co.	Schenectady, N.Y.

Adults 50c  
Child 12c  
**Lucon** HERRY LAST 2 DAYS  
Feature Show 6:00 - 7:57 - 8:55

**Rita HAYWORTH**  
**Glenn FORD** in  
**Affair in Trinidad**

Plus — Color Cartoon Latest News

Sales **MG** Service

**Brooks Engineering**  
(Lansing's Only Foreign Car Dealer)

- ★ Speed equipment and parts for all domestic cars.
- ★ A wide range of mechanical equipment, to do the very best of work on any car.

5026 N. Grand River — By Airport — Ph. 95568

## Contemporary Art Display Opens

Selections by well-known contemporary American painters will be featured in a new art exhibit starting Wednesday in the Union art gallery. Still-lives, sea and landscapes, and figure studies will be included in the collection which will be on display for three weeks.

The exhibit is sponsored by the Art Department.

The art room is open daily from 8 a.m. to 9 p.m.

## Business Girls Club To Meet Wednesday

The Michigan State College Business Girls Club will hold the November luncheon meeting in Room 21 of the Union Wednesday noon. Dean Stanley E. Crowe will give a talk on "Interesting Experiences in the Lecture-Contest Series."

## Look!

## Special Student Cleaning Services

- ★ Men's & Women's Gloves Cleaned
- ★ Throw Rugs
- ★ Raincoats Waterproofed
- ★ Suede & Leather Jackets
- ★ Stuffed Toys

## COLLEGE CLEANERS

301 Abbot Road

# NOSE, THROAT,

## and Accessory Organs not Adversely Affected by Smoking Chesterfields

### FIRST SUCH REPORT EVER PUBLISHED ABOUT ANY CIGARETTE

A responsible consulting organization has reported the results of a continuing study by a competent medical specialist and his staff on the effects of smoking Chesterfield cigarettes.

A group of people from various walks of life was organized to smoke only Chesterfields. For six months this group of men and women smoked their normal amount of Chesterfields—10 to 40 a day, 45% of the group had smoked Chesterfields continually from one to thirty years for an average of 10 years each.

At the beginning and at the end of the six-months period each smoker was given a thorough

examination, including X-ray pictures, by the medical specialist and his assistants. The examination covered the sinuses as well as the nose, ears and throat.

The medical specialist, after a thorough examination of every member of the group, stated: "It is my opinion that the ears, nose, throat and accessory organs of all participating subjects examined by me were not adversely affected in the six-months period by smoking the cigarettes provided."

ASK YOUR DEALER FOR CHESTERFIELD—EITHER WAY YOU LIKE 'EM

**Chesterfield** CIGARETTES

**Chesterfield** KING-SIZE CIGARETTES

CONTAINS TOBACCO OF BETTER QUALITY & HIGHER PRICE THAN ANY OTHER KING-SIZE CIGARETTE

Buy **CHESTERFIELD** Much Milder