

INFORMATION

PATRONIZE STARS HERE

CAMEL 100

Reds Gain Crest Of Sniper Ridge

Hill Lost Despite Intense Fighting

SEOUL (AP)—Two Chinese Red battalions yesterday drove South Koreans off the highest point on Sniper Ridge in a battle of bayonets and hand grenades.

South Koreans quickly opened a counterattack seeking to win back the height, Pinpoint Hill, in Central Korea.

The height has been lost and taken before by the South Koreans since the Allied limited offensive opened Oct. 14.

The Reds battled to the top of Pinpoint during their third attack on Sniper Ridge in 12 hours. An earlier report that the South Koreans had beaten off the third assault proved incorrect.

A front line dispatch said the Reds forced the South Koreans to withdraw from Pinpoint to the south slope of Sniper Ridge at 6:10 a.m.

At noon, the South Koreans opened a counterattack with bayonets and grenades. An American officer with the South Koreans said the fighting in mud and fog was the most intense he had ever seen.

Engineer Council Elects Officers For Exposition

The Engineering Council chose Jerry Lampe, Grand Haven senior, to serve as general chairman of the Engineering Exposition at a recent meeting.

Bob Olsen, Muskegon senior, was elected coordinator of the exhibits. George Pence, Alto junior, will be industrial exhibits chairman, and Phil Wright, Youngstown, N.Y. senior, was selected as financial chairman for the Exposition which is slated for May 1.

Faculty Women To Meet Tonight

The Faculty Women's Club will meet tonight at 8 p.m. in the Union. The program will be held in the Faculty Women's Room.

The speakers for the evening are Dr. Walter Adams of the Economics Department and Dr. Leroy Ferguson, Political Science. They will discuss "Highlights of the National Election."

Despite diversification in farming, cotton remains the largest crop in the deep South of the United States.

J-Department To Move Soon

The Journalism Department will soon be operating in a new location. Preparations are being made to occupy the old Bacteriology Annex within a month. Complete renovation of the interior has been nearly completed.

New facilities available are: a modern photo lab and darkroom, typography and advertising labs. Four new labs have been added; two of these will be used for editorial work, copy and layout. Adequate space for expanded operations will also be available.

MSC Professor Writes Articles For Encyclopedia

Prof. Shao Chang-Lee, head of the Department of Foreign Studies, wrote two chapters on Eastern art for the 1952 Book of Knowledge.

The articles, entitled "Eastern Painting" and "Eastern Sculpture," explain the history of Chinese, Japanese, Korean and Indian art and carry illustrations of these objects of particular cultural significance.

E. V. McDouglin, editor-in-chief of the Book of Knowledge, said in a letter to Dr. Lee, "Your chapters are a distinguished contribution to our book."

Candidates Asked To Turn in Poster

Candidates for freshmen class officers and Student Congress officers are requested to turn in a seven and one-half by eight inch poster to the Student Congress office by today. These will be displayed in the Union for Thursday's election.

Dorm election chairman should pick up election material at the office between 7 and 8 p.m. Wednesday.

Le Clear Studios
will be taking Senior Pictures for the Wolverine in the Tower Room today.
8:30 - 6:30
No Appointment Necessary

Radio Roles Open For Male Cast

An all male cast audition for "The Light House Keepers," will be held tomorrow night in Room 246, Auditorium. Past experience is not necessary to qualify.

This half-hour radio program is sponsored by Alpha Epsilon Rho, national radio honorary, and directed by Paul Quinlan.

Arnold Air Society Elects Officers

New officers of Arnold Air Society, elected at last night's meeting are: Arnold McClellan, Lansing senior, commanding officer; Kenneth Berman, Whitehall junior, secretary-treasurer; Richard McCally, Willmette, Ill. junior, executive officer; and Lee Mah, Battle Creek junior, adjutant recorder.

Wolverine Picture Schedule

Wednesday, Oct. 23
7:00 Pan Hei
7:15 Theta Alpha Phi
7:30 Varsity Club
8:00 Alpha Zeta
8:45 Am. Inst. of Elect. Engr.
9:00 Agr. Education
9:15 Agr. Engr.
9:30 Mortar Board

Street Separates (K) Night from Day

NEW HAMPTON, Ia. (AP)—Day and Night are just across the street from each other here.

Bob Day, secretary of the New Hampton Chamber of Commerce, lives on the west side of the street. Directly opposite on the east side is Harry Knight, an auto dealer.

Collins to Address Marketing Club

Bob Collins of the MSC Placement Bureau will address the Marketing Club tonight at 8:30 in Room 33 of the Union. He will speak on the history and services of the Bureau, with current placement information and interview tips for underclassmen as well as Juniors and Seniors.

Program Slated In Music Aud

"Green Pastures," will be presented tonight at 8:15 in the Music Auditorium. Instead of the Auditorium as stated yesterday.

Prof. Davis Edwards, head of Chicago University's Speech Department, will present an interpretive reading of the play. The program is open to the public.

Business Club Hosts Flint J.C.

Delta Sigma Pi, professional business administration fraternity, and the Division of Business will play host to forty-five Flint Junior College students tomorrow.

The students are members of a business club at the junior college. The day's activities will include a campus tour in the morning, conducted by the members of Delta Sigma Pi. In the afternoon the visitors are going to meet with members of the business administration staff to discuss the courses offered at MSC.

EAT ALL YOU WANT—ALL FOODS SERVED FAMILY STYLE.
A variety of home cooked food and meats with Chicken always served.
Week, 11-2-81.10
Evenings, 5-9-81.75
Saturday and Sunday 11-2-81.75
VARIETY RESTAURANT
One block east of East Lansing On US-16

DANCE CALL TRACY HALSEY AND ORCHESTRA FOR YOUR NEXT PARTY

4-9772

4-802

NOW SHOWING Lucon

ADULTS
CHILDREN
A ray new lashed titling production Franz Lehars musical about a Widow who had a—but no man—met dashing Danie

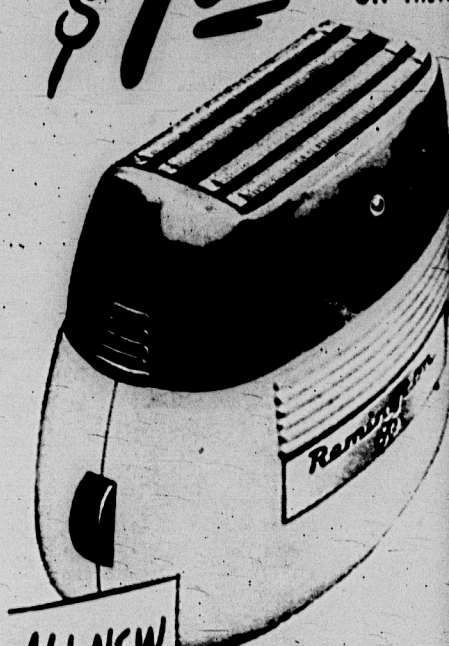
PRESENTED 6:00 - 8:00 - 10:00
M.C.M. NEW SAV
SIMULTANEOUS
TECHNICOLOR
MUSICALLY

Lana Turner
The Merry Widow
Fernando Lamas

EXTRA IN NEWS
FOOTBALL SHOTS — M.S.C. BEATS SYRACUSE

YOUR OLD SHAVE IS WORTH UP TO..

AS A TRADE-IN ALLOWANCE ON THE..



ALL-NEW Remington 60 ELECTRIC SHAVE

Right now, you can get an all new Remington 60 electric shaver everyone's raving about... the market today that's certified by the United States Coast Guard to give a shave in 60 seconds or less... and here's how!

Just bring us any standard electric shaver you own — of make or condition... we'll give you up to \$7.50 allowance toward the purchase of a new Remington 60... the world's fastest, smoothest electric shaver. We want a new Remington 60... we want your old shaver now!

Morgan's
ESTABLISHED 1929
LUCON BLDG. EAST LANSING 121 S. WASHINGTON LANSING

See em made... buy em hot and buy em by the sack

Spudnuts HALLOWEEN PARTIES
SPECIAL RATES ON PARTY ORDERS!
The Spudnut Shop 232 M.A.C.

Plan Your Ideal Vacation Now!

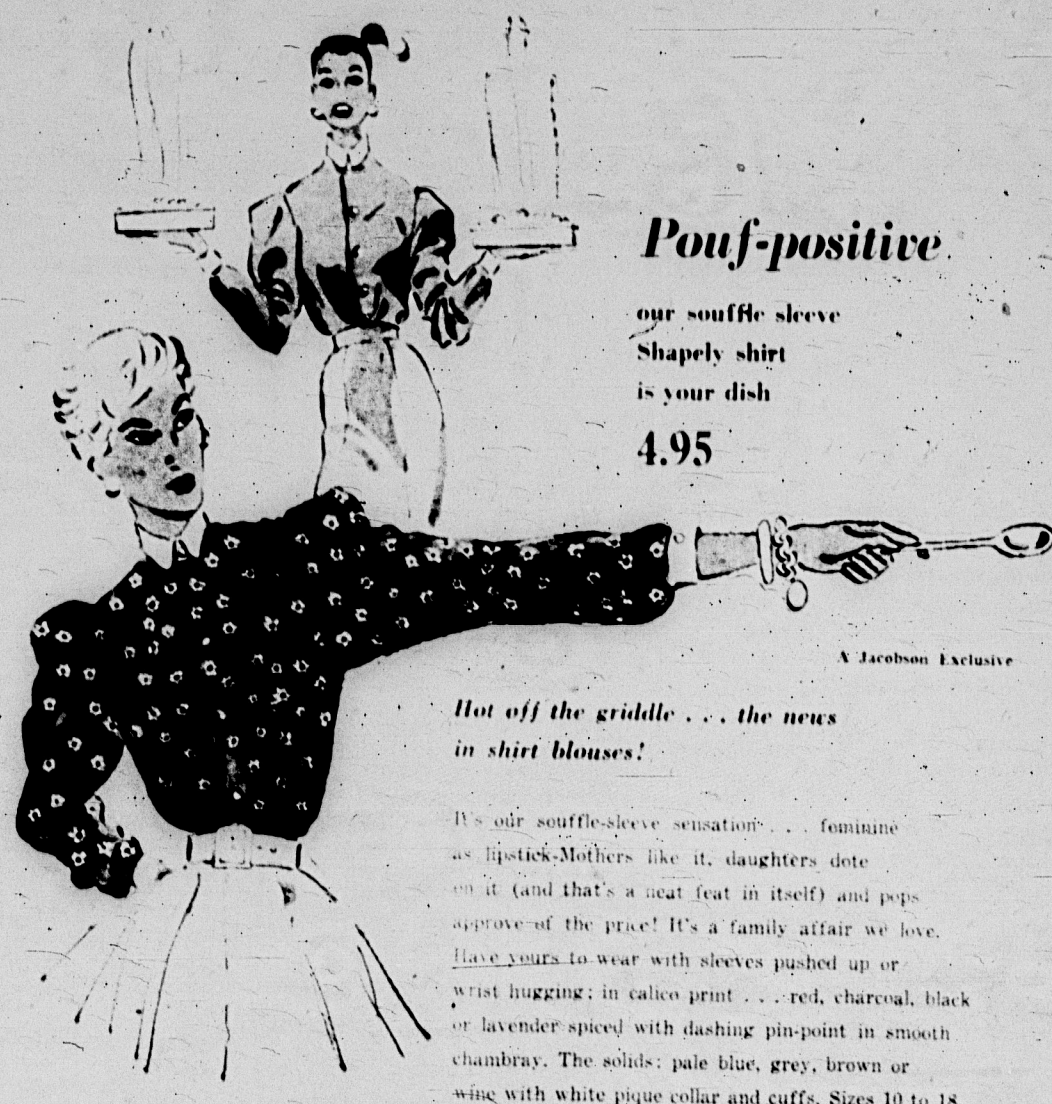
Christmas Air Reservations Are Going Fast... Reserve Space now! Impartial routing!

A Quick Trip to Bermuda, New Orleans, Cuba, Nassau

College Travel Office

Union Building Concourse Phone 84372

STORE HOURS — 9:30 A.M. TO 5:30 P.M.



Pouf-positive

our souffle sleeve Shapely shirt is your dish 4.95

Hot off the griddle... the news in shirt blouses!

It's our souffle-sleeve sensation... feminine as lipstick. Mothers like it, daughters dote on it (and that's a neat feat in itself) and pops approve of the price! It's a family affair we love. Have yours to wear with sleeves pushed up or wrist hugging; in calico print... red, charcoal, black or lavender spiced with dashing pin-point in smooth chambray. The solids: pale blue, grey, brown or wine with white pique collar and cuffs. Sizes 10 to 18.

Jacobson's

EAST LANSING

the long-sleeved shirts you love!

Ship'n Shore

2" and 3"

Couldn't be smarter! Long-sleeved shirts... with French cuffs or classic barrel cuffs! Carefully tailored in combed cotton broadcloths that wash and wash and wash! Like sparkling whites? Jewel colors? Checks? Plaids? Stripes? Come, get 'em now! Sizes 30 to 40.



Wanda Hancock SMARTWEAR

Abbott Road... East Lansing Ph. 8-7555