





## Michigan State News

Published on class days Monday through Friday, inclusive, during fall, winter and spring term except days after holidays; weekly during summer term. Entered as second-class matter under act of March 3, 1879 at the postoffice at East Lansing, Mich. Offices located on third floor of Union Building, Michigan State University, East Lansing, Michigan. Member of the National Association of College Publishers and The Associated College Presses. The Associated Press is entitled exclusively to the use for publication of all the local news printed in this newspaper, as well as all AP news dispatches.

**National Advertising Service, Inc.**  
College Publishers Representative  
420 Madison Ave. New York, N.Y.  
Chicago - Boston - Los Angeles - San Francisco

### Editorially

## The J-Building

Whether future journalists who learn their profession at MSC will have a new building to work in is anyone's guess at present.

A Michigan Press Association committee, as well as the Journalism Department, thinks a building is vitally needed.

The committee's recommendation to the Board of Agriculture that a self-liquidating building, complete with printing plant, be built here, has caused much commotion, in and out of the college.

The Journalism Department will lose its present inadequate building when it is razed to facilitate building of the proposed new library. Offices and a few class rooms will be moved temporarily to what is now the Bacteriology annex, but no permanent housing was in sight before the MPA report suggested a new plant.

The MPA committee, speaking for most of Michigan's editors and publishers, is worried about the status of the Department, not only because of its poor housing but also because of its lack of facilities for training.

Graduates don't know enough about actual journalistic procedures and print operation, the report declares.

Although the Journalism Department here is small when compared to business administration or agriculture, its function is a vital one.

The newspaper men and women turned out by MSC, along with other collegiate departments, will determine in part what Americans read in their newspapers in the future. If what readers see in their papers is poor journalism, misinformation, or slanted news, a lack of proper training will be to blame.

A new building complete with plant would not guarantee good journalists. But it would make possible a more complete training and more thorough knowledge of the technical operations of a printing plant.

Technical knowledge, the report states, is vitally important in the successful operation of newspapers, particularly small ones.

It is not the Department's plan to make technical training the object of journalism schooling, but some technical know-how, along with broad basic training in sciences, literature and political philosophy is a must.

Students would be acquainted with printing plant procedures in the proposed plant.

But in construction of the plant lies the problem. The building, as proposed by MPA, would cost about half a million dollars. Printing equipment would raise costs of the plant far above that figure.

The printing shop would have to make enough yearly profit to pay printers' salaries, supplies and depreciation on equipment besides paying off interest and principal on bonds floated to construct the building.

College administrators aren't yet agreed on just how large the plant would have to be to reap the required profit.

A large plant would be able to print most college pamphlets, bulletins and catalogues as well as all student publications except the Wolverine. If operated on a commercial basis comparable to other printing establishments, the plant would be feasible.

The need is urgent.

The college would not have to wait for an appropriation from the legislature to begin construction on a self-liquidating building. The only questions which will decide the outcome of MPA's proposal and journalism's need are: How big a plant would the college have to install to make the building pay, and how ready are college administrators to face the pressures which such installation would mean.

## A Good Decision

World came yesterday from the All-College Judiciary that the Student Congress is powerless, under the present constitution, to propose amendments to the constitution.

The Judiciary wrangled over the problem for two days and based their final decision on the omission of the "or" in the constitutional clause specifying the amendment procedure. As the constitution now stands, an amendment can be proposed by a petition signed by 10 per cent of the student body.

The reasoning behind the ruling was that the constitution which was voted in last spring did not contain an "or" and thus did not give the congress the power to propose amendments. It is this constitution that is now in effect and this one under which the government must operate.

Reason: The students voted this constitution into effect, not the original draft. Like all democracies, the people must rule the government, not the government rule the people.

Criticism will come from some quarters saying that this was a small matter, that the "or" was in the original draft, and that the Judiciary should follow the spirit of the law, not the letter.

But the Judiciary deserves credit for its ruling and the reasoning which brought it about. The justices thought the problem out thoroughly, considered all

See DECISION, Page 6

## DELTA CHI

SMOKER 7:30 - 9:00

JANUARY 30, 1952

101 WOODMERE



### INFORMATION

#### ENGINEERING COUNCIL

Meeting cancelled. Next meeting Feb. 6, EE Building.

#### SPARTAN ENGINEER

Staff meeting, 8:30 p.m. Engineering office.

#### STUDENT CONGRESS MEETING

7:30 p.m. Room 32, Union.

#### SPARTY IN THE SERVICE

5 p.m. Ork Room 1, Union.

#### EXCALIBUR

Meet and eat, 12 noon. Keweenaw.

#### JUNIOR CLASS

Class meeting, Room 34, Union.

#### ASM

7:30 p.m. 206 EE Building.

#### PHI GAMMA NU ACTIVES

7 p.m. Room 41, Union.

#### SKATING CLUB

Board meeting, 7 p.m. Tower Room, Union.

#### SPARTAN WOMEN'S LEAGUE

Membership party, YWCA house, 7 p.m.

#### YMCA, YWCA, HILLEL and CSF

Intergroup co-recreation night, 7:30 p.m. Social hall, Peoples Church.

#### SPARTAN BOWMEN

Janison Fieldhouse, 7:30 p.m.

#### OFF CAMPUS GIRLS' COUNCIL

Business meeting and movie, Room 33, Union, 8:30 p.m.

#### PHI GAMMA NU PLEDGES

Room 42, Union, 7 p.m.

#### CSF

Mid-week meditation, McCune chapel, 8:30 p.m.

### Roberts

## Propaganda Flies Thick Over World-Wide Skies

By J. M. ROBERTS JR.  
Associated Press News Analyst

Propaganda is flying as it has seldom flown before. The Allies accuse Russia of aggressive intentions in Southeast Asia and issue the nearest thing yet to an ultimatum that they will not take it lying down. The Kremlin inveighs against Allied activities in the Middle East.

The United States denies the Russian charge that he is aiding Chinese Nationalist guerrilla forces in Burma. The first reaction, admittedly open to refutation, is "if not, why not?"

Herbert Hoover has renewed his plea that the U.S. make Europe defend herself. He belittles the possibility of war but warns that American troops out front in Europe are left open to annihilation.

A congressional advocate of use of the atom bomb in North Korea but admits the military men aren't fully agreed it would be worthwhile.

Germans, emboldened by American eagerness for her participation in the defense of Europe, keeps adding political demands to her price. Irritating, but not much different from the way all nations act.

The Korean truce talks have broken down because the Allies don't know what to do next and the Communists have just about what they wanted—an almost

truce and a perpetual area of harassment.

Part of this welter is merely a routine of the times. Part of it is due to extreme nervousness over where hell may break loose next.

In the UN, the Allied warning about Southeast Asia sounds like a reaction to recent Russian propaganda. Actually, it was a result of the recent Washington tri-power conference on what to do about Indo-China.

It is also an answer to those who feel the U.S. should draw a line and warn the Communists not to cross. Instead of doing that, the United States, joined by France and England, warns that now Korea will be met by Korea-like action of the United Nations.

It is a manifestation that the Allies are now arriving at the "position of strength" toward which they have been working for three years. And today's turmoil is only the beginning of the nervousness which is bound to accompany the final steps in this attempt to create a balance of power.

### Editorially

## New Board Can Do Much For Congress

An important stride toward more effective student government was made late last term with the inauguration of the Student Government Faculty Resource Board.

This group of student representatives and faculty members meets informally. Its work will remain largely ungraded.

The Board was set up to meet the need for closer coordination between the Student Government and the faculty. Student views and suggestions can be adequately presented to the government through Congress representatives but heretofore there has been little contact between the faculty and Student Government except through administrative personnel wholly concerned with student counseling.

Now there is an opportunity for both groups to meet and discuss the merits of Student Government programs. The Board only has the power to question and recommend but its influence should be apparent in the soundness of future Student Government activities.

### Joe Sent Them

University of Michigan campus cops gave an authentic touch to a "roaring twenties" party at a fraternity house there the other night. The law deterred the fraternity "speakeasy" but failed to dampen any spirits as the beer kegs turned out to hold ginger ale.

### Night Staff

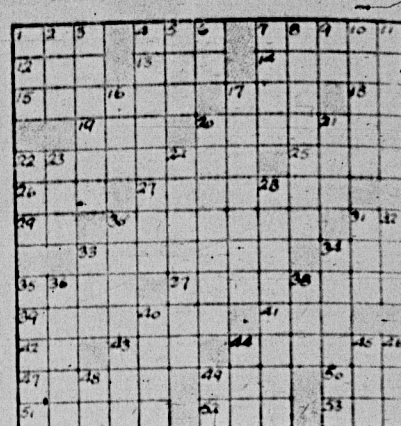
Night Editor: Jim Sandberg  
Asst. Night Editor: Bob Pope  
Night Staff: Chuck Weidner  
Name: Constance Marquette  
1000 Bill Beaudry, Bee-Hive  
Lansing, Mich.  
Night Ad Staff: Suzanne Loh  
1000 Bill Beaudry, Bee-Hive  
Night Sports Ed: Bob Loh

### Staff Members

Editorial Asst.: Dean Wakefield  
Sports Editor: Alex Lapid  
Feature Editor: Mary Jane Folger  
Society Editor: Vicki Conway  
Photo Editor: Jim Mosher  
Local Ad Manager: Pat Skelensky  
National Ad Manager: Martha Russell

### Crossword Puzzle

ACROSS  
1. Fabled  
4. Passage from shore island  
7. Morsel of food  
10. Poem  
12. Public building  
13. Regular  
17. Small ring  
18. Musical note  
19. Atmosphere  
20. Cuckoo  
21. Put back  
22. Color quality  
23. Raw metal  
24. Scolded  
25. Wink for emotion  
26. Light-weight wool fabric  
27. Near  
28. Ties  
29. Before  
30. Much of a crowd  
31. Case  
32. List  
33. Vase  
34. Conjunction  
35. Small child  
36. Salutes  
37. Heavy cords  
38. Circle  
39. Flat  
40. House  
41. Type measure  
42. Small round mark



### New Meaning

Posing as FBI agents two unidentified men entered a Penn fraternity house last night with cash and clothing worth close to \$500. They must stand for "Fraternities Believe Instantly" they were accepted without question.

### PATRONIZE STATE NEWS ADVERTISING

ONLY 10 Days To Get YOUR WOLVERINE

## CAMPUS

WHERE THE STUDENTS SHOP FIRST CLASSIFIED

RATES—Minimum charges for 15 words or less: 1 day, 50c; 3 days, \$1.00; five days, \$1.25 plus 15c service charge for credit. Each word in excess of 15, 3c per day. PHONE IN YOUR AD 8-1511, Ext. 248 9 to 12 — 1 to 3

AUTOMOTIVE	FOR SALE	PERSONAL
1947 PONTIAC. Excellent overall condition. Will sell very reasonably. Call 2-9018 after 8:00.	1947 FLYMOBILE. radio, heater, spotlight. Excellent condition. 212 E. Michigan Ave. Lansing. After 2:00 p.m. call 8-3090.	1947 CHEVROLET. Good. Spent most in excellent state. 1950 Model A Ford. Excellent replacement parts. \$3,500.
1947 PLYMOUTH. Good. Spent most in excellent state. 1950 Model A Ford. Excellent replacement parts. \$3,500.	1947 PLYMOUTH. Good. Spent most in excellent state. 1950 Model A Ford. Excellent replacement parts. \$3,500.	1947 PLYMOUTH. Good. Spent most in excellent state. 1950 Model A Ford. Excellent replacement parts. \$3,500.
1947 PLYMOUTH. Good. Spent most in excellent state. 1950 Model A Ford. Excellent replacement parts. \$3,500.	1947 PLYMOUTH. Good. Spent most in excellent state. 1950 Model A Ford. Excellent replacement parts. \$3,500.	1947 PLYMOUTH. Good. Spent most in excellent state. 1950 Model A Ford. Excellent replacement parts. \$3,500.
1947 PLYMOUTH. Good. Spent most in excellent state. 1950 Model A Ford. Excellent replacement parts. \$3,500.	1947 PLYMOUTH. Good. Spent most in excellent state. 1950 Model A Ford. Excellent replacement parts. \$3,500.	1947 PLYMOUTH. Good. Spent most in excellent state. 1950 Model A Ford. Excellent replacement parts. \$3,500.
1947 PLYMOUTH. Good. Spent most in excellent state. 1950 Model A Ford. Excellent replacement parts. \$3,500.	1947 PLYMOUTH. Good. Spent most in excellent state. 1950 Model A Ford. Excellent replacement parts. \$3,500.	1947 PLYMOUTH. Good. Spent most in excellent state. 1950 Model A Ford. Excellent replacement parts. \$3,500.
1947 PLYMOUTH. Good. Spent most in excellent state. 1950 Model A Ford. Excellent replacement parts. \$3,500.	1947 PLYMOUTH. Good. Spent most in excellent state. 1950 Model A Ford. Excellent replacement parts. \$3,500.	1947 PLYMOUTH. Good. Spent most in excellent state. 1950 Model A Ford. Excellent replacement parts. \$3,500.
1947 PLYMOUTH. Good. Spent most in excellent state. 1950 Model A Ford. Excellent replacement parts. \$3,500.	1947 PLYMOUTH. Good. Spent most in excellent state. 1950 Model A Ford. Excellent replacement parts. \$3,500.	1947 PLYMOUTH. Good. Spent most in excellent state. 1950 Model A Ford. Excellent replacement parts. \$3,500.
1947 PLYMOUTH. Good. Spent most in excellent state. 1950 Model A Ford. Excellent replacement parts. \$3,500.	1947 PLYMOUTH. Good. Spent most in excellent state. 1950 Model A Ford. Excellent replacement parts. \$3,500.	1947 PLYMOUTH. Good. Spent most in excellent state. 1950 Model A Ford. Excellent replacement parts. \$3,500.
1947 PLYMOUTH. Good. Spent most in excellent state. 1950 Model A Ford. Excellent replacement parts. \$3,500.	1947 PLYMOUTH. Good. Spent most in excellent state. 1950 Model A Ford. Excellent replacement parts. \$3,500.	1947 PLYMOUTH. Good. Spent most in excellent state. 1950 Model A Ford. Excellent replacement parts. \$3,500.
1947 PLYMOUTH. Good. Spent most in excellent state. 1950 Model A Ford. Excellent replacement parts. \$3,500.	1947 PLYMOUTH. Good. Spent most in excellent state. 1950 Model A Ford. Excellent replacement parts. \$3,500.	1947 PLYMOUTH. Good. Spent most in excellent state. 1950 Model A Ford. Excellent replacement parts. \$3,500.
1947 PLYMOUTH. Good. Spent most in excellent state. 1950 Model A Ford. Excellent replacement parts. \$3,500.	1947 PLYMOUTH. Good. Spent most in excellent state. 1950 Model A Ford. Excellent replacement parts. \$3,500.	1947 PLYMOUTH. Good. Spent most in excellent state. 1950 Model A Ford. Excellent replacement parts. \$3,500.
1947 PLYMOUTH. Good. Spent most in excellent state. 1950 Model A Ford. Excellent replacement parts. \$3,500.	1947 PLYMOUTH. Good. Spent most in excellent state. 1950 Model A Ford. Excellent replacement parts. \$3,500.	1947 PLYMOUTH. Good. Spent most in excellent state. 1950 Model A Ford. Excellent replacement parts. \$3,500.
1947 PLYMOUTH. Good. Spent most in excellent state. 1950 Model A Ford. Excellent replacement parts. \$3,500.	1947 PLYMOUTH. Good. Spent most in excellent state. 1950 Model A Ford. Excellent replacement parts. \$3,500.	1947 PLYMOUTH. Good. Spent most in excellent state. 1950 Model A Ford. Excellent replacement parts. \$3,500.
1947 PLYMOUTH. Good. Spent most in excellent state. 1950 Model A Ford. Excellent replacement parts. \$3,500.	1947 PLYMOUTH. Good. Spent most in excellent state. 1950 Model A Ford. Excellent replacement parts. \$3,500.	1947 PLYMOUTH. Good. Spent most in excellent state. 1950 Model A Ford. Excellent replacement parts. \$3,500.
1947 PLYMOUTH. Good. Spent most in excellent state. 1950 Model A Ford. Excellent replacement parts. \$3,500.	1947 PLYMOUTH. Good. Spent most in excellent state. 1950 Model A Ford. Excellent replacement parts. \$3,500.	1947 PLYMOUTH. Good. Spent most in excellent state. 1950 Model A Ford. Excellent replacement parts. \$3,500.
1947 PLYMOUTH. Good. Spent most in excellent state. 1950 Model A Ford. Excellent replacement parts. \$3,500.	1947 PLYMOUTH. Good. Spent most in excellent state. 1950 Model A Ford. Excellent replacement parts. \$3,500.	1947 PLYMOUTH. Good. Spent most in excellent state. 1950 Model A Ford. Excellent replacement parts. \$3,500.
1947 PLYMOUTH. Good. Spent most in excellent state. 1950 Model A Ford. Excellent replacement parts. \$3,500.	1947 PLYMOUTH. Good. Spent most in excellent state. 1950 Model A Ford. Excellent replacement parts. \$3,500.	1947 PLYMOUTH. Good. Spent most in excellent state. 1950 Model A Ford. Excellent replacement parts. \$3,500.
1947 PLYMOUTH. Good. Spent most in excellent state. 1950 Model A Ford. Excellent replacement parts. \$3,500.	1947 PLYMOUTH. Good. Spent most in excellent state. 1950 Model A Ford. Excellent replacement parts. \$3,500.	1947 PLYMOUTH. Good. Spent most in excellent state. 1950 Model A Ford. Excellent replacement parts. \$3,500.
1947 PLYMOUTH. Good. Spent most in excellent state. 1950 Model A Ford. Excellent replacement parts. \$3,500.	1947 PLYMOUTH. Good. Spent most in excellent state. 1950 Model A Ford. Excellent replacement parts. \$3,500.	1947 PLYMOUTH. Good. Spent most in excellent state. 1950 Model A Ford. Excellent replacement parts. \$3,500.
1947 PLYMOUTH. Good. Spent most in excellent state. 1950 Model A Ford. Excellent replacement parts. \$3,500.	1947 PLYMOUTH. Good. Spent most in excellent state. 1950 Model A Ford. Excellent replacement parts. \$3,500.	1947 PLYMOUTH. Good. Spent most in excellent state. 1950 Model A Ford. Excellent replacement parts. \$3,500.
1947 PLYMOUTH. Good. Spent most in excellent state. 1950 Model A Ford. Excellent replacement parts. \$3,500.	1947 PLYMOUTH. Good. Spent most in excellent state. 1950 Model A Ford. Excellent replacement parts. \$3,500.	1947 PLYMOUTH. Good. Spent most in excellent state. 1950 Model A Ford. Excellent replacement parts. \$3,500.
1947 PLYMOUTH. Good. Spent most in excellent state. 1950 Model A Ford. Excellent replacement parts. \$3,500.	1947 PLYMOUTH. Good. Spent most in excellent state. 1950 Model A Ford. Excellent replacement parts. \$3,500.	1947 PLYMOUTH. Good. Spent most in excellent state. 1950 Model A Ford. Excellent replacement parts. \$3,500.
1947 PLYMOUTH. Good. Spent most in excellent state. 1950 Model A Ford. Excellent replacement parts. \$3,500.	1947 PLYMOUTH. Good. Spent most in excellent state. 1950 Model A Ford. Excellent replacement parts. \$3,500.	1947 PLYMOUTH. Good. Spent most in excellent state. 1950 Model A Ford. Excellent replacement parts. \$3,500.
1947 PLYMOUTH. Good. Spent most in excellent state. 1950 Model A Ford. Excellent replacement parts. \$3,500.	1947 PLYMOUTH. Good. Spent most in excellent state. 1950 Model A Ford. Excellent replacement parts. \$3,500.	1947 PLYMOUTH. Good. Spent most in excellent state. 1950 Model A Ford. Excellent replacement parts. \$3,500.
1947 PLYMOUTH. Good. Spent most in excellent state. 1950 Model A Ford. Excellent replacement parts. \$3,500.	1947 PLYMOUTH. Good. Spent most in excellent state. 1950 Model A Ford. Excellent replacement parts. \$3,500.	1947 PLYMOUTH. Good. Spent most in excellent state. 1950 Model A Ford. Excellent replacement parts. \$3,500.
1947 PLYMOUTH. Good. Spent most in excellent state. 1950 Model A Ford. Excellent replacement parts. \$3,500.	1947 PLYMOUTH. Good. Spent most in excellent state. 1950 Model A Ford. Excellent replacement parts. \$3,500.	1947 PLYMOUTH. Good. Spent most in excellent state. 1950 Model A Ford. Excellent replacement parts. \$3,500.
1947 PLYMOUTH. Good. Spent most in excellent state. 1950 Model A Ford. Excellent replacement parts. \$3,500.	1947 PLYMOUTH. Good. Spent most in excellent state. 1950 Model A Ford. Excellent replacement parts. \$3,500.	1947 PLYMOUTH. Good. Spent most in excellent state. 1950 Model A Ford. Excellent replacement parts. \$3,500.
1947 PLYMOUTH. Good. Spent most in excellent state. 1950 Model A Ford. Excellent replacement parts. \$3,500.	1947 PLYMOUTH. Good. Spent most in excellent state. 1950 Model A Ford. Excellent replacement parts. \$3,500.	1947 PLYMOUTH. Good. Spent most in excellent state. 1950 Model A Ford. Excellent replacement parts. \$3,500.
1947 PLYMOUTH. Good. Spent most in excellent state. 1950 Model A Ford. Excellent replacement parts. \$3,500.	1947 PLYMOUTH. Good. Spent most in excellent state. 1950 Model A Ford. Excellent replacement parts. \$3,500.	1947 PLYMOUTH. Good. Spent most in excellent state. 1950 Model A Ford. Excellent replacement parts. \$3,500.
1947 PLYMOUTH. Good. Spent most in excellent state. 1950 Model A Ford. Excellent replacement parts. \$3,500.	1947 PLYMOUTH. Good. Spent most in excellent state. 1950 Model A Ford. Excellent replacement parts. \$3,500.	1947 PLYMOUTH. Good. Spent most in excellent state. 1950 Model A Ford. Excellent replacement parts. \$3,500.
1947 PLYMOUTH. Good. Spent most in excellent state. 1950 Model A Ford. Excellent replacement parts. \$3,500.	1947 PLYMOUTH. Good. Spent most in excellent state. 1950 Model A Ford. Excellent replacement parts. \$3,500.	1947 PLYMOUTH. Good. Spent most in excellent state. 1950 Model A Ford. Excellent replacement parts. \$3,500.
1947 PLYMOUTH. Good. Spent most in excellent state. 1950 Model A Ford. Excellent replacement parts. \$3,500.	1947 PLYMOUTH. Good. Spent most in excellent state. 1950 Model A Ford. Excellent replacement parts. \$3,500.	1947 PLYMOUTH. Good. Spent most in excellent state. 1950 Model A Ford. Excellent replacement parts. \$3,500.
1947 PLYMOUTH. Good. Spent most in excellent state. 1950 Model A Ford. Excellent replacement parts. \$3,500.	1947 PLYMOUTH. Good. Spent most in excellent state. 1950 Model A Ford. Excellent replacement parts. \$3,500.	1947 PLYMOUTH. Good. Spent most in excellent state. 1950 Model A Ford. Excellent replacement parts. \$3,500.
1947 PLYMOUTH. Good. Spent most in excellent state. 1950 Model A Ford. Excellent replacement parts. \$3,500.	1947 PLYMOUTH. Good. Spent most in excellent state. 1950 Model A Ford. Excellent replacement parts. \$3,500.	1947 PLYMOUTH. Good. Spent most in excellent state. 1950 Model A Ford. Excellent replacement parts. \$3,500.
1947 PLYMOUTH. Good. Spent most in excellent state. 1950 Model A Ford. Excellent replacement parts. \$3,500.	1947 PLYMOUTH. Good. Spent most in excellent state. 1950 Model A Ford. Excellent replacement parts. \$3,500.	1947 PLYMOUTH. Good. Spent most in excellent state. 1950 Model A Ford. Excellent replacement parts. \$3,500.
1947 PLYMOUTH. Good. Spent most in excellent state. 1950 Model A Ford. Excellent replacement parts. \$3,500.	1947 PLYMOUTH. Good. Spent most in excellent state. 1950 Model A Ford. Excellent replacement parts. \$3,500.	1947 PLYMOUTH. Good. Spent most in excellent state. 1950 Model A Ford. Excellent replacement parts. \$3,500.
1947 PLYMOUTH. Good. Spent most in excellent state. 1950 Model A Ford. Excellent replacement parts. \$3,500.	1947 PLYMOUTH. Good. Spent most in excellent state. 1950 Model A Ford. Excellent replacement parts. \$3,500.	1947 PLYMOUTH. Good. Spent most in excellent state. 1950 Model A Ford. Excellent replacement parts. \$3,500.
1947 PLYMOUTH. Good. Spent most in excellent state. 1950 Model A Ford. Excellent replacement parts. \$3,500.	1947 PLYMOUTH. Good. Spent most in excellent state. 1950 Model A Ford. Excellent replacement parts. \$3,500.	1947 PLYMOUTH. Good. Spent most in excellent state. 1950 Model A Ford. Excellent replacement parts. \$3,500.
1947 PLYMOUTH. Good. Spent most in excellent state. 1950 Model A Ford. Excellent replacement parts. \$3,500.	1947 PLYMOUTH. Good. Spent most in excellent state. 1950 Model A Ford. Excellent replacement parts. \$3,500.	1947 PLYMOUTH. Good. Spent most in excellent state. 1950 Model A Ford. Excellent replacement parts. \$3,500.
1947 PLYMOUTH. Good. Spent most in excellent state. 1950 Model A Ford. Excellent replacement parts. \$3,500.	1947 PLYMOUTH. Good. Spent most in excellent state. 1950 Model A Ford. Excellent replacement parts. \$3,500.	1947 PLYMOUTH. Good. Spent most in excellent state. 1950 Model A Ford. Excellent replacement parts. \$3,500.
1947 PLYMOUTH. Good. Spent most in excellent state. 1950 Model A Ford. Excellent replacement parts. \$3,500.	1947 PLYMOUTH. Good. Spent most in excellent state. 1950 Model A Ford. Excellent replacement parts. \$3,500.	1947 PLYMOUTH. Good. Spent most in excellent state. 1950 Model A Ford. Excellent replacement parts. \$3,500.
1947 PLYMOUTH. Good. Spent most in excellent state. 1950 Model A Ford. Excellent replacement parts. \$3,500.	1947 PLYMOUTH. Good. Spent most in excellent state. 1950 Model A Ford. Excellent replacement parts. \$3,500.	1947 PLYMOUTH. Good. Spent most in excellent state. 1950 Model A Ford. Excellent replacement parts. \$3,500.
1947 PLYMOUTH. Good. Spent most in excellent state. 1950 Model A Ford. Excellent replacement parts. \$3,500.		



# 1/2 off



# This Week's Schedule

## Three Meets at Home on Tap

Five Michigan State athletic squads will share the sports spotlight this weekend as the Spartans take on opponents in swimming, wrestling, and track at home while the basketball and fencing teams seek wins on the road.

Coach Charles McCaffree's undefeated swimmers will shoot for their fourth straight dual meet victory when they host Purdue Friday night in Jensen pool. The Green and White mermen notched their first Big Ten win last

week, sinking Indiana, 61-32. Earlier this season the squad downed Bowling Green and Iowa State decisively in dual encounters.

Purdue will furnish the opposition for Coach Fendley Collins' MSC wrestling team the same night in Jensen Fieldhouse. The Bollermakers are a perennial power in collegiate wrestling and will give some measure as to the Spartans' 1952 title hopes. Last season

State took an 18-11 decision from the Purdue team.

The other home event will introduce Michigan State's 1952 indoor track squad to Spartan fans. Coach Karl Schladerman's crew opens the season against Notre Dame in a dual meet Saturday night in the fieldhouse.

The Spartans, third in the Western Conference indoor championship meet last year, will bank on team depth more than on individual stars as in the past few years. Schladerman's well-balanced squad is headed by Jim Keppford in the distance events, hurdler and dashman Dick Henson, and Art Ingram in the dashes. Top prospects among the sophomores include distance men Dick Jarrett and Lyle Garbe, hurdler John Corbelli and shot putter Don Schiesswohl.

Meanwhile, away from home, Michigan State's rebounding eagles invade Evanston, Ill., to take on Northwestern's basketball squad. The Wildcats are still smarting from the 82-69 trouncing administered by the Spartans at East Lansing earlier this month and will be out to avenge this defeat.

Northwestern, although down the ladder in the Western Conference standings, is one of the top "home" teams in the Big Ten and can be dangerous for any opponent when playing on the Wildcat court.

In another "away" event, the State fencing team meets Notre Dame at South Bend Saturday, Feb. 2. Coach Charles Schmitter has returning veterans in Ray Tette, in the foil event, and Bill Pierson and Fred Freilicht, in the sabre event. The 1952 squad will be built around these lettermen and will be out to better last year's fine 7-3 record in dual meets. The Irish pinned one of the 1951 defeats on the Spartan team by a 15-12 score.

## Dorm Champ Takes First Cage Loss

With Fred Lynch leading the way with a 14 point outburst, Mason 2 smothered last year's Mason Dorm champions, Mason 5, 30-8, in last night's top IM basketball game.

The boys from "5" failed to line up to expectations as they fell to the high powered attack of the winners.

Mason 8, 32; Mason 9, 26. Mason 8 outscored Mason 9 in the final quarter of a closely-matched game to cop a 32-26 victory. Bob Hoppin paced the attack with 14 tallies.

Snyder 15, 35; Snyder 12, 8. Combining a fast passing offense with accurate shooting, Snyder 15 defeated Snyder 12 by the lopsided score of 35-8. Herb Sheppie paced the winners with 18 points.

Black Knights, 82; All-Stars, 23. In the highest scoring game of the night, the Black Knights thrashed the All-Stars, 82-23. Bill Postula collected 23 points for the winners.

Stray Rinky Dinks, 24; Five Kegs, 7. The Stray Rinky Dinks made the scoring a team affair as they overwhelmed the Five Kegs, 24-7 in a one-sided contest.

W. Shaw 6, 27; W. Shaw 8, 16. The court experience of W. Shaw 6 proved the winning margin as they defeated W. Shaw 8, 27-16.

W. Shaw 9, 23; W. Shaw 7, 19. W. Shaw 9 scored two quick baskets in the final seconds of the game to notch a 23-19 win over W. Shaw 7. The tilt was highlighted by wide open play on the part of both squads.

Abbot 10, 9; Abbot 14, 12. Paced by Ray Kafarski's nine points, six coming in the last half, Abbot 10 defeated Abbot 14 by the score of 19-12.

Abbot 12, 16; Abbot 17, 15. With identical quarter scores until the final frame, Abbot 12 eked out a narrow 17-16 victory over a highly aggressive Abbot 17 quintet.

Snyder 17, 26; Snyder 18, 15. After building up a lead early in the game, Snyder 17 roared to a 26-15 win over Snyder 18. Bob Skerret scored nine tallies for the winners.

Senior Vets, 26; IVCF, 13. Center Gene Hussey scored 16 points to lead the Senior Vets in a 26-13 conquest over IVCF.

E. Shaw 6, 17; E. Shaw 3, 16. E. Shaw 6 fought off a last quarter rally by E. Shaw 3 to win 17-16. Jack Munson's nine tallies topped the winner's effort.

E. Shaw 5, 21; E. Shaw 9, 20. Roy Nelson and Bill Starn flipped in three baskets in the last period to snatch a 21-20 victory out of the hands of E. Shaw 9.

E. Shaw 10, 19; E. Shaw 8, 16. Piling up 13 points in the second and third quarters, E. Shaw 10 waited to a 19-16 win over E. Shaw 8.

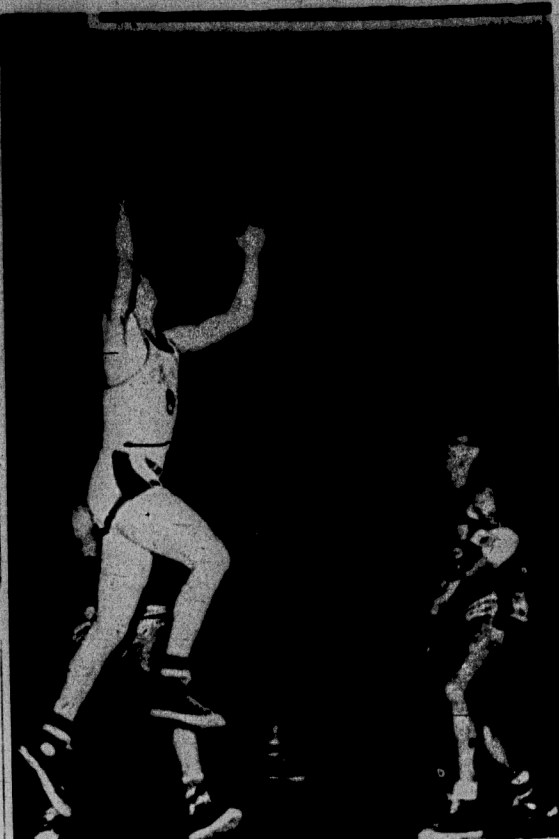
Newman Club, 29; E. Lansing Globetrotters, 21. The Newman Club, paced by Al Condino, Spike Cline and Bill Damon, rolled over the E. Lansing Globetrotters, 29-21.

Landon Bus Boys, 42; Whiskers, 29. Guard Fred Budner with 13 markers, led the Landon Bus Boys to a 42-29 win over the Whiskers.

Sphinx, 43; Whoohares, 41. Siez Mallenkott's 21 point effort was not enough to offset the balanced scoring attack of the Sphinx as the Whoohares lost, 43-41.

Ticks, 19; Bashful, 7, 11. The Ticks scored nine tallies in the opening stanza and coasted to a 19-11 win over the Bashful.

## Big Bob Hits Twice



Center Bob Carey as he led the Spartans to a 56-47 victory over Purdue Saturday night. At the left he goes in alone for a lay-up shot. At the right he tips in the ball for two points while teammates Bill Bower (4), Gordie Stauffer (18), and Carlson (17) look on. Carey was the high scorer for State with 16 points.

### Carey, Bower Next

## Stackhouse Still Tops State Scoring Race

Keith Stackhouse, Bob Carey and Bill Bower, who comprise the forward line on the Spartan basketball team, still lead team scoring, latest statistics show.

Although Stackhouse has been on the bench in the past two games, he is still setting the scoring pace with 139 points. He also has the top game average, 11.6.

Center Bob Carey, who made a quick switch from football to basketball, showed he was rounding into shape by taking over the number two spot with his 16 point outburst against Purdue Saturday. He holds a one-stall margin over Bower, 122 to 121. Carey has averaged 9.4 markers per game, and has only one less field goal than Stackhouse.

### Basketball Scoring Race

	G.	P.	F.	P.	Pts.	Avg.
Stackhouse	12	13	28	43	139	11.6
Carey	14	42	28	43	122	8.7
Bower	13	14	22	39	121	9.3
Stauffer	13	17	22	39	101	7.7
Means	13	21	21	42	83	6.4
Avella	13	25	17	32	80	6.2
Carlson	13	16	8	44	49	3.8
Furthman	10	17	11	15	35	3.5
Hartman	1	1	6	43	28	2.8

### Mural Schedule

The IM table tennis tournament gets underway tonight in the table tennis room of the Union with the following pairings listed for 6:45.

G. Cummings vs. R. J. J. Sabatini vs. A. Hadie, A. Peppel vs. J. Bell, R. Kullenberg vs. E. Koss, R. J. Bell vs. J. Dorse, S. Dorse vs. R. Allen, J. Pore vs. Small, and P. Zukowski vs. C. Roz.

At 8:00, a bye. Slatto to square off at 7:00. R. Wikoff vs. E. Greenburg, D. Kuch vs. E. Spide, J. Snotting vs. J. Morris, E. Levine vs. J. Frach, I. Lagerburg vs. P. Savage, D. Barz vs. D. Ackles, and B. Carpenter drew a bye.

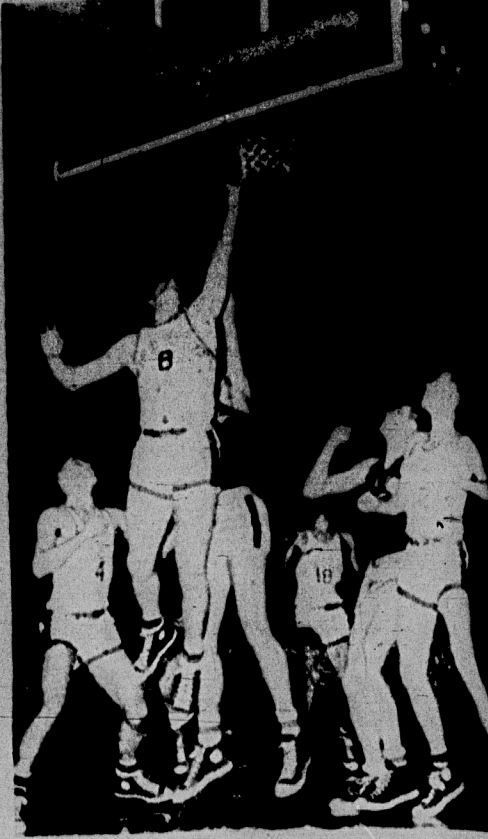
### Henry's Title Shot At Stake Tonight

CHICAGO (AP)—A new heavyweight threat will risk championship hopes in a possible punch-laden showdown with undefeated Bob Satterfield in the Chicago Stadium tonight.

Clarence Henry, 24, Los Angeles, rated No. 3 heavyweight contender, will meet the dangerous punching Satterfield, 28, in a 10 round bout that may be an explosive brawl from the start.

The contest will be televised nationally starting at 10 p.m., Eastern Standard Time. Henry will be shooting for his 31st victory in 35 bouts. Or his 20 victims, 16 were by knockout, among them being Bob Murphy and Bob Bice.

Henry, 165 lbs., is back 185 pounds to 181 lbs. Satterfield, 175 lbs., is back 185 pounds to 181 lbs.



while teammates Bill Bower (4), Gordie Stauffer (18), and Carlson (17) look on. Carey was the high scorer for State with 16 points.

### Low and Inside

## Baseball Woes

By ALEX LAGGERS

When Baseball Coach John Kobs goes through his crying towel routine this spring, I for one, will sympathize with him.

His pitching strength was thin enough last year, but five of his front-line hurlers are brinking on ineffectiveness. Trying to get his battery crews in shape for the season tour which will take the Spartans through a 12-game tour, Kobs' pitchers and catchers have been busy preparing for the last two weeks in the Livestock Pavilion.

Ineligible because of scholastic difficulties this year are hurlers Chuck Gorman, Don LaPointe, Bob Bower, Bob Carlson, and Tom Lawson. Also ineligible to make the Southern tour is catcher Chuck Johnson, who has other starting catcher, Team Capt. Bill Bower, is playing baseball.

Dick Blanchard, State's starting third baseman, is the key man in the Spartan infield, might also be kept from the sidelines this season. He is rumored to have a contract with the Cleveland Indians. Blanchard's sensation as a sophomore batting .327.

The tour will include two double-headers which will rough on the fresh and sophomore-stocked pitching staff that Kobs will probably have to field.

Kobs, going into his 27th year as State baseball coach, has been asked by the AAU to coach the All-American college team on a Japan tour next summer. He hasn't yet whether he will.

Last summer, Coach Karl Schladerman coached the All-American track and field on a tour through the "Never again," said Schladerman, on his return home. I returned all of my bright prospects had been lured by rival coaches.

Stray Comments and Quotes: Coach Byrge Mann's "Coach of the Year" trophy to him by the Detroit Quarterbacks Club will be Germany Shultz, all-time All-American punter.

Chuck Davey, State's all-time boxing champion, years boxing team, "The best this side of the Atlantic." Chuck Spenser adorns the cover of the new NEXA boxing guide.

Info found in Wisconsin's boxing brochure: Wisconsin won 71, and drew two in intercollegiate matches home before Michigan State broke the spell with a 43-41 win at Madison in March, 1950.

The Badgers' coach, Johnny Walsh, won 38 and lost 15 as an amateur. His teams have won 87, lost 15, and five since he took over in 1931. He has produced 10 team championships and 25 individual titles.

OPPOSITE THE CAMPUS

# Lucon

STARTS TODAY

A Song Star-Spangled Lift for your Heart!

WARNER BROS. PRESENTS

DAY M'RAE

VIRGINIA MAYO NELSON

ROMAN

CAGNEY

COOPER GIBSON

HARRIS LOVEJOY NORMAN

PARSONS SCOTT WYMAN

WYMORE

ADDED — COLOR CARTOON — LATEST NEWS

# VanDervoort's

YOUR MSC SPORTS HEADQUARTERS

Super Spartan Specials!

STATE BLANKETS

Farm Visitors: take home some Spartan Color!

A 51" x 72" all wool blanket for just \$8.95. Constructed of Spartan Green wool, each blanket is adorned with an official 10-inch white chenille "S". Warm, practical here's a gift suggestion for Valentine's Day you can't go wrong on!

Heavier weight all-wool blanket. Spartan Green with white chenille "S". 54" x 72".

\$8.95

\$12.75

# FOX HOLE P. X.

CITY BLOCK BARGAIN BASEMENT

Enter By State Theater — Open Until 9:00 P. M. Thursday

10% SALE ALL JACKETS

MEN'S LEVIS — \$3.98

LADIES' LEVIS — \$4.49

CIGARETTES

2 PKGS. — 37c

1 CARTON — \$1.85

DRY CLEANING

PANTS 45c

SKIRTS 45c

SUITS 95c

Open Thursday Evening Till 9

# MODERN AGE

WINE and WHITE

Wine and white saddles with matching wine chem-crape soles

\$8.95

Good Shoes Well Filled

# DeCamp's SHOES

On Campus Since 1927

Center of East Lansing

# SPECIAL!!

\$62.50

CONVENIENT TERMS

L. C. Smith Super-Speed 11 inch carriage key set tabulators... your choice of Elite or Pica type... one year guarantee

OTHER MACHINES From \$37.50 Up

NEW PORTABLES... YOUR CHOICE

SMITH • CORONA • ROYAL • REMINGTON • UNDERWOOD

RENTAL... LATE MODEL MACHINES

Store Hours 9 A.M. to 5 P.M. Monday Through Saturday — Also Open Monday Evening 5 P.M. to 9 P.M.

# WOLVERINE

TYPEWRITER CO., INC.

117 E. Kalamazoo St.

Phones 2-4413 • 3-0298



# Boxers Return to Face Custer After Disappointing Road Trip

## Travel Weary Squad Drops Decision To Gonzaga After Tie with San Jose

By LEN BLEWETT

After a disastrous trip to the West Coast where they were tied by San Jose and defeated by Gonzaga, the Spartan boxers face two weeks of workouts before their next match against Fort Custer, Feb. 8, in Jenison Fieldhouse.

## Gym Squad Prepares For Indiana

By BOB LEWIS

With most Big Ten schools in the midst of semester examinations, the Michigan State gymnastic squad will have an extra week of practice to prepare for their next meet, a Feb. 9th encounter against Indiana.

The affair will be held in Jenison Fieldhouse following the MSC Ohio State basketball game. Indiana lost to the Spartans last year by the lopsided score of 62-34, and in the Big Ten meet they failed to score. In their opener this season they were routed by Michigan's rebuilding gym team, 66-29.

In three appearances to date Michigan State has totaled 198 1/2 points while their opponents in two dual matches have collected 75. Three all-around performers, Bob Felanier, Russ Paul, and Carl Runt have done almost two-thirds of the Spartan scoring. Felanier leads the pack with 62 points followed by Runt with 42 1/2 and Paul, 29.

John Walker, trampolining and tumbling star, is next in line with 20. Don Vest, a one-event man on the tumbling mats, has 12 with trampolinists Tom Mullineux and Al Hannas close behind with 10.

John Furry, performing in the side horse and tumbling events, has six points. George Kuerrepa and Harry Wilkinson round out the point-getting department with four and two respectively.

## Blind Athlete Bids to Regain Shotput Crown

ST. LOUIS (AP)—Bill Bangert will try to regain a national AAU shotput title in Madison Square Garden next month although a rare ailment has all but destroyed his vision. The 260-pound Bangert has been working out twice daily for the National AAU indoor championships to be held in New York Feb. 16. He expressed confidence today he will make a good showing.

The 28-year-old Bangert will be competing against Jim Fuchs, who holds the world championship with a toss of 58 feet 10 1/2 inches. "I have been getting up to 54 feet in workouts, and I'm always better in meets than I am in practice," he said. Bangert is a successful business man and one of St. Louis' best known athletes. He has won national honors as an amateur boxer in AAU and Golden Gloves competition and in discus and shotput competition.

Two years ago Bangert was stricken with retinal phlebitis—hemorrhaging of veins in the retina. He underwent an operation last October. "I can't see a thing," he said. "The doctors don't give me any hope."

Bangert was the national intercollegiate discus champion in 1944 and 1945, but finds his lack of eyesight too much of a handicap to overcome in this sport.

Makris' boxers now sport a 1-1 record after their decisive mauling by the Bulldogs from Gonzaga. Only in the 147-pound division did the Spartans win a clear-cut decision as NCAA champ Jed Black blasted his way to a 30-27 win over Dave Smith. The other two State victories were close as 125-pounder Jimmy Evans won over Gordon Simanton and NCAA 178-pound champ Chuck Spiese switched to the heavyweight bracket to decision Mike McMurry. Both wins were by one point.

Four undefeated Spartans fell by the wayside against powerful Gonzaga as Leroy Jeffery, Norm Andrew, Tom Hickey, and Alex Tsakaris lost their first bouts of the season. Only Spencer now remains undefeated.

Spartan boxer Leon Hamilton lost another close one, 29-27, to Roy Kelley.

Summary:  
119—Terry Smith (29) dec. Leroy Jeffery (27) MSC  
125—Jimmy Evans (30) dec. Gordon Simanton (29) G  
135—Arden Gollaber (30) dec. Norm Andrew (29) MSC  
147—Jed Black (30) dec. Dave Smith (27) G  
150—Tom Keys (30) dec. Tom Hickey (29) MSC  
165—Roy Kelley (29) dec. Leon Hamilton (27) MSC  
178—Chuck Spiese (29) dec. Mike McMurry (28) G

## 'MURAL SIDELIGHTS

The Intramural badminton tournament will be held Friday night in Jenison Gymnasium. The tourney will begin at 7 with play expected to end by 10.

## 'Mural Schedule

BASKETBALL	
Wednesday, January 30	Court 1
7:30 W. Shaw 1 vs. W. Shaw 2	
8:10 Mason 2 vs. Mason 3	
8:35 Mason 2 vs. Mason 3	
9:10 Mason 3 vs. Mason 2	
Court 2	
6:40 2. Ave. vs. Schomons	
7:15 DZ vs. Mason B.B.	
8:10 5. Keys vs. Senior Vets	
8:35 Rogers vs. RVE	
9:10 Rogers vs. Howland	
Court 3	
6:40 Mason 1 vs. Mason 3	
8:10 Abbot 15 vs. Abbot 16	
8:35 Abbot 17 vs. Abbot 14	
9:10 Snyder 10 vs. Snyder 15	
BOWLING	
8:15	
1-2 Abbot 10 vs. Abbot 11	
3-4 Abbot 11 vs. Abbot 15	
5-6 Abbot 12 vs. Abbot 17	
7-8 Abbot 13 vs. Abbot 16	

— NEED —  
Programs Medals  
Favors Trophies  
Stationery Jewelry  
Write — Wire — Phone  
TOM SUCKLING  
'Your Bailout Man'  
1312 S. University, Ann Arbor  
Phone 3-1733



BILL BOWER

## Third in Scoring

## Bower One of Three Fort Wayne Cagers

By TOM RYAN

Sports fans in Ft. Wayne, Ind., take more than a passing interest in this season's Michigan State basketball team. Three members of the Spartan squad, one of them now injured, hail from Ft. Wayne.

Bill Bower, Gordie Stauffer, and DeNeal Hartman are the Hoosier cagers that have made good on the MSC quip. Each was a starter at the beginning of the season until Hartman suffered a thigh injury in December that has sidelined him for the rest.

All three players attended South Side high school, graduating in June 1948. Stauffer and Bower enrolled at Michigan State the following fall, but it took Hartman two years before he decided to follow his former classmates to college.

In high school, Bower captained the basketball team in his senior year. He played forward for three years, and was named to the all-city team in 1948.

Although he stands only 5'11", Bill is an exceptional rebounder, especially considering the height of the opposing forwards. A steady, dependable performer, Bower also rates high on defense and is third in team scoring. He usually draws the opponents' top scoring forward on defense.

Until Saturday's game with Purdue, Bower has been the number two man in team scoring. An ankle injury slowed Bill down during the last game.



TUX SPECIAL!  
\$39.95

WITH ACCESSORIES  
• SHIRT • STUDS  
• HOSE • TIE  
\$45.00

USE OUR CONVENIENT LAYAWAY PLAN  
Len Koslchak's VARSITY SHOP

## Boilermakers Undefeated

## Purdue Next for Wrestlers

Michigan State's wrestling team, surprise winner last Saturday over Ohio State, the defending Big Ten team champion, faces a real test Friday in unbeaten Purdue.

The match will begin at 8:30 p.m. in Jenison Fieldhouse.

Purdue, always a Western Conference mat stronghold, has just two matches under its belt thus far this season, but the results of these engagements on a road trip have established the Boilermaker team as a national power.

The Lafayette, Ind., strong men beat Iowa State Teachers College 16-11 and followed a night or so later with an 18-10 decision over Cornell College, always a strong foe. The Teachers, last year's National AAU champs, recently walloped Michigan State 21-6, which gives an idea of the task ahead of the Spartan matmen.

Purdue's top performers so far are Al Vega, sophomore 123-pounder; Jack Moreno, 147-pound senior who won a Big Ten title as a sophomore and last year was a runner-up; and Walter Vielhov, 195-pound junior heavyweight who is a tackle on the football team. All three are undefeated thus far this season.

Vega probably will meet either Ruben Schickman, winner by a fall in an exhibition match against Ohio State last week, or Bob Ginner, promising sophomore who wrestled to a draw against an experienced Ohio State foe.

Moreno likely will trade grips with either Vito Perrone or Bob Hoke, both sophomores. Hoke, undefeated in three matches this season, was NAAT welterweight champ last season.

on Against Ohio State he wrestled at 157 pounds but can make the 147-pound limit.

The heavyweight bout will pit a couple of football tackles against each other, for State's Larry Fowler also is a highly promising griddle under Coach Biggie Munn. Fowler against Ohio State won the only one of

his three bouts this year that went to a normal conclusion. The other two were curtailed by injuries, once to Fowler, the other time to his Pittsburgh foe.

State's record thus far is two wins and one loss. State beat Pitt 16-14 and Ohio State 16-11 and dropped the duke to Iowa Teachers.

NOW SHOWING AT YOUR FAVORITE BUTTERFLIED THEATERS

## MICHIGAN

• NOW SHOWING •  
ROBERT TAYLOR  
DENISE DARCELL  
— IN —  
"Westward the Women"  
with Hope Emerson

## CAPITOL

2 DAYS — 12  
"Katie Did It"  
with Ann Blyth  
and Mark Stevens  
— AND —  
"Two Yanks in Trinidad"  
with Pat O'Brien  
and Brian Donlevy

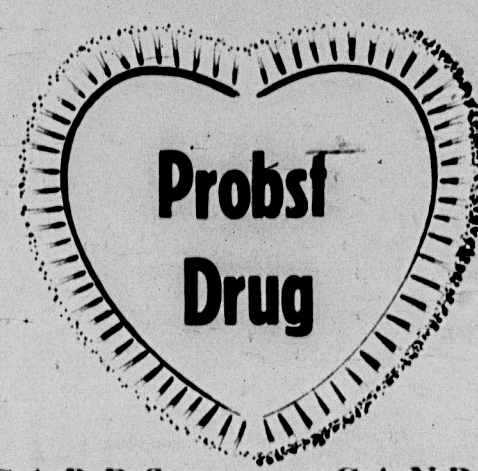
## LANSING

"Journey into Light"  
with Sterling Hayden, Viveca Lindfors, and Thomas Mitchell  
"Highly Dangerous"  
with Dane Clark  
and Margaret Lockwood

## GLADMER

"Happy Go Lovely"  
with David Niven  
and Vera Ellen  
News — Cartoon — Short  
— SOON —  
"Hong Kong"

## MAKE YOUR VALENTINE HEADQUARTERS



## CARDS CANDY

116 W. Grand River  
Tel. 83618  
EAST LANSING  
FREE DELIVERY — 9-4:30

Plenty of room inside

## Arrow Shorts!



With Arrow's famous contoured seat panel—no center seam!

Man to man, what's worse than skimpies cut shorts that bind, bunch and ride up? It just can't happen with Arrows—because they're cut full in the first place, and "Sanforized" labeled won't shrink more than 1%. Plain or pattern, white or colors—get yours today!

ARROW SHORTS \$1.45 & \$1.65  
ARROW UNDERSHIRTS \$1.00  
ARROW T-SHIRTS \$1.25

HURD'S  
LANSING AND EAST LANSING

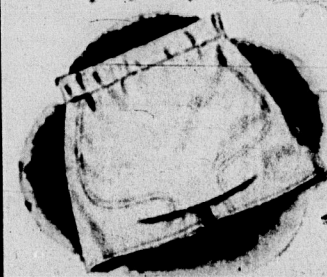
THIS is the life

of the man who wears

## Arrow Shorts!

Perfectly at ease in action...

perfectly comfortable at ease!



Arrow Shorts \$1.45 & \$1.65  
Arrow Undershirts \$1.00  
Arrow T-Shirts \$1.25

ARROW

SHIRTS • TIES • SPORTS SHIRTS • UNDERWEAR • HANDBANDS

## HOW TO BE A "SOCIAL SUCCESS" AT STATE...

1. Own a red convertible.
2. Buy your shoes at Klocks.
3. Be an outstanding athlete.
4. Buy your shoes at Klocks.
5. Have extra tickets to the J-Hop.
6. Buy your shoes at Klocks.

"CAMPUS-WISE are KLOCK-WISE"

## KLOCKS SHOE STORE

LUCON BLOCK — EAST LANSING



# 10 Feared Dead in Ohio Flood

## Winds, Snow, Ice Join River In Destruction

MARIETTA, O. (AP)—Biting winter winds, snow and ice teamed with the rampant Ohio river yesterday to torment 8,000 to 10,000 flood refugees in Ohio and West Virginia.

The toll of the dead in a three-day, three-state flood of the Ohio and tributary streams tentatively rose to 10.

The storm reached blizzard proportions at Pomeroy and Middleport, Ohio, at mid-morning, about 12 to 14 hours before the menacing crest of the Ohio was due to strike on the stroke of midnight.

But, the slanting snow was not too heavy, and the 2,000 to 2,400 homeless in the two Ohio river towns bunked safe from the winter with more fortunate neighbors on higher ground.

The sudden cold coated streets and highways with ice. Downstream the cold weather brought optimism supported by the U.S. Weather Bureau when it reduced the expected crests from Portsmouth westward two to three feet.

Center of the damaging Ohio flood was the stretch of winding river from Parkersburg, W. Va., around the great bend to Pomeroy and Middleport and downstream toward Gallipolis, Ohio.

The crest of the flood rolled ponderously southward on a schedule that should bring it to Pomeroy and Middleport by midnight.

Below Pomeroy and Middleport, the next danger point is at Portsmouth, where an uncompleted flood wall fails to protect some lowlands and New Boston, Ohio. About 200 families face evacuation.

## Scholarship Awards Ready

Undergraduate women students may now enter competition for two \$100 scholarships to be awarded spring term. Mrs. Margaret Gomon, counselor for women, announced yesterday.

Awarded by Delta Delta Delta sorority, the local grants will be given in addition to national scholarships previously announced.

Application blanks for the two local awards may be obtained at Mrs. Gomon's office or at the office of the Committee on Scholarships. Completed applications must be returned to Mrs. Gomon by March 31.

Applications will be judged by a committee of faculty and society advisors. Winners will receive the awards spring term.

To be eligible for the awards, candidates must follow the application blanks. Applicants cannot be accepted unless completely filled out, according to Norma Stoddard, Tri Delta scholarship chairman.

## Communists Hint Small Concession: Deadlock Remains

MUNSAN, Korea (AP)—The Chinese Communists hinted yesterday they would leave direct responsibility for civil administration of a demilitarized zone in North Korea hands, shunting an armistice.

The gesture sounded generous but actually applies only to a one and one-quarter mile wide strip north of the proposed cease-fire line which follows the 38-mile battle front across Korea. The Allies would administer a like strip south of the line.

## Salesgirls Wanted

Salesgirls, stand managers, and girls interested in selling the Spartan magazine are asked to attend a meeting tonight at Room 35 of the Union, according to John Greenberg, circulation manager.

## ADVICE TO STUDENT USED CAR BUYERS

Now is the season of low prices and a large selection from which you can choose.

We welcome you to come in and look around, whether you buy or not.

**AL HANSEN, INC.**  
814 E. MICHIGAN AVENUE  
Phone 2-4454



The murky, swirling waters of the Licking River spread over miles of countryside around Zanesville, Ohio, making highways hazardous at best and impassable in many instances. A car is shown approaching the city from the west.

on State Route 146, hub-deen in water. The highway was closed to traffic soon after this picture was taken. Heavy rains caused the flood in this area and forced evacuation of many families along the swollen Ohio river.

## Faculty Snapshot

### Stewart Handles Scholarship Duties

By BILL GINSBURG

Bob Stewart, who provides snatches of team background during WKAR broadcasts of Spartan basketball games, is the latest addition to the staff at the Administration Building.

Stewart played basketball at Syracuse University and after graduating in 1939 served a four year hitch in the Navy. He coached a high school basketball team in Rochester, N.Y., for a year and joined State's Athletic Department in 1948.

During his first year at MSC, Stewart served on the staff as an assistant professor of physical education. He became freshman basketball coach and later served as an assistant to Ralph Young, athletic director.

Last year he moved into his present position as director of scholarships succeeding Arthur J. Clark, former chairman of the Faculty Committee on Scholarships.

The scholarship program at State has become a big business and Stewart has his hands full with approximately 25 applicants a day.

He and the committee are faced with the job of providing enough scholarships for students who are in need of aid and deserve it.

Stewart's office is engaged in a publicity campaign which will, in time, provide more funds for scholarships.

He personally evaluates each application for aid and determines who receives help and how much. Stewart emphasizes contribution.

tion to school life as prime determinant of scholarship aid. He feels that a student who aids his school will aid his community later on.

Industry should provide funds for college scholarships, aid, stated Stewart, their investment will pay off in the long run by providing trained men to take positions in the field.

Ford Motors, he added, has started an experimental program of that nature in the Detroit area. If it proves successful, the country will be shown the value of such a plan.

Stewart is an avid sport fan and provides the local color at home games as a hobby.

## Vet Requirements Announced by VA

All veterans receiving a degree this term and planning to continue their education must contact the local veterans' affairs office.

Raymond C. Yeckie, supervisor of veterans' affairs, said this is necessary so his office will have time to give attention to each case.

The office is in Room 10 of the MSC Administration Building.

## Decision

Continued from Page 2

sides, and came up with the decision. It is sound and does credit to the members.

The decision will mean more work and less glory for the congress. It will necessitate that petitions be circulated to propose the tax amendment and give the congress power to propose amendments.

If the congress co-operates with the Judiciary and gets out the petitions, it will be evidence that we are heading toward a more efficient, workable student government.

When the petitions come to you for signature, read them well. If you believe they will bring about better Student Government, sign them.

## FOR THE FINEST IN DANCE MUSIC CLARE FISCHER'S ORCHESTRA

CALL GUS 6-3754

## VERY EXCELLENT EUROPEAN TOURS

are available to you

And this is the moment to plan

We are authorized agents to help you travel with an experienced company

THIS IS IMPORTANT!

Another Hint — To avoid delay, Start proceedings to acquire passport, visas, AND SPACE TODAY

Just arrived — Another fine set of 40 and 54 day tours from \$923 up.

May we be of service to you?

Bonded Agent

All Principal Carriers

## College Travel Office

Union Building Concourse

Phone 8-4372

## Cat-Astrophe Local Collection Minus One Kitty -Owner Troubled

If you spot a little yellow kitten who answers to the name of "Reddy" around here, grab him quick. He's worth \$10.

"Reddy," it seems, is one of a collection of cats owned by Mrs. Belle C. Owens, 323 Evergreen Ave. He has been missing well over a week now, and Mrs. Owens suspects foul play.

So, Mrs. Owens has put up a reward for his return. Anyone locating "Reddy" may contact his owner, or call the Michigan State News, extension 288.

## Capitol Comments

### Grand Jury Bill Goes to Committee

By JOHN DICK  
State News Capitol Reporter

An amendment to the Grand Jury bill, which entitles witnesses to legal counsel, was referred to Sen. Harry F. Hitt's (R-Lansing) judiciary committee yesterday.

The bill, introduced by Rep. John T. Lesinski (D-Detroit), passed the House vote last Friday, 65 votes to 0.

It has been a subject of much interest and editorial comment since its inception, however.

Wayne County Circuit Judge Chester P. O'Hara has excluded defense counsel from Grand Jury hearings during the recent State Fair investigations.

Rep. Louis C. Cramton (R-Lapeer) implied that editorial criticism of the Legislature for its attempt to weaken the Grand Jury system was "too emotional."

The Grand Jury bill, as amended, would allow any witness called before the jury to be accompanied by an attorney at all times while he is in its presence or is being questioned by that body.

## Spartan Engineer Meeting Slated

Representatives of all engineering societies will meet with members of the Spartan Engineer in the magazine office on Publications Row tonight at 8:30.

Presidents of engineering societies who have not named permanent representatives to the magazine are requested to select temporary representatives to tonight's meeting, said Vern Nelson, editor.

## Churchill Announces Cut in British Buying

LONDON (AP)—Prime Minister Churchill's government announced a program yesterday to cut down on Britons' food, tobacco, socialized medicine and many other things in a dramatic bid to stave off national bankruptcy.

Chancellor of the Exchequer R. A. Butler said western defenses against Communism would be endangered by failure of the big new campaign to "live within our means."

Butler announced a cut of 150 million pounds (\$20 million dollars) a year in British buying in the United States and elsewhere abroad. A nation already beset with shortages will have less of many things—meat, fish, automobiles, clothing, furniture, toys.

In a move intended to channel necessary manpower into defense projects, it was decided that non-essential industries will be forced to hire all labor through government employment agencies.

For the first time there will be small charges for medical prescriptions, dental treatment, wages, hearing aids, surgical belts and hospital care formerly supplied patients without charge under the tax-supported national health service.

"Our life blood is draining away and we've got to stop it," Butler said in a talk over the government radio last night.

He announced the program to the House of Commons this afternoon. The Conservatives, with a majority of 14, will vote the plan into effect tomorrow.

Butler told the Commons that the new twist of the economic screws was "a great moral issue" that must succeed.

Failure would threaten the western world's defensive stance against Communism and endanger Britain's own program of social services, he said, while success would put the pound back on its feet by the end of 1952.

Britain's drive is the central factor in an effort by the Com-

## Farmers' Week Show Scores

MSC's first "remade" show was well-received by Farmers' Week visitors and yesterday afternoon in the auditorium.

The show, "Poultry Management" was the first of a day series of farm service shows produced by the Cooperative Extension Service.

Two more shows will be held this afternoon and tomorrow at the stage of the Auditorium.

PATRONIZE STATE ADVERTISERS

## WANTED

Members for Student Affairs

and

Public Relations Depts. of Student Government

SIGN PETITIONS AT

Student Government Office

3rd Floor Union

## TROPHIES

— for every occasion — in style and material that you want.

PIG'N WHISTLE SHOW

610 MICHIGAN AVE.

East Lansing

## WATER PROOF TARPULINS

- Heavy Duty
- Most Sizes and Weights

## CANVAS BY THE YARD

## QUALITY AWNING SHOW

530 E. MICHIGAN AVE.

PH. 5-40

## Jacobsen's

East Lansing

## Month-end Clearance

## FURTHER REDUCTIONS

Late Fall and Winter Fashion Favorites

... Drastically Reduced!

30% to 50% Off! and more

DRESSES • SHOES

LINGERIE • ROBES

SUITS • COATS

SKIRTS • BLOUSES

STORM COATS • JEWELRY

GLOVES • PURSES

30c UNTIL 5 P.M. • 50c AFTER 5 P.M. • 12c KIDDIES ALWAYS

TODAY and THURS. **STATE** SHOWN AT 1:30-3:30-5:30 7:30-9:30

A FRENCH SENSATION!

Walter Winchell  
Blessed with youngsters who have a passport to your heart!

THE COMEDY HIT!  
**FACE TO THE WIND**

featuring  
the new 8-year-old star of Paris and Hollywood  
**JACKIE GENCEL**

Newsweek  
"Surpasses in charm and subtlety any foreign film since The Bicycle Thief"

The merry, madcap adventures of 7 Montmartre kids, a girl and half the dogs of Paris!

"JERRY GRAY AND BAND"  
FRI. ALSO — "MY FRIEND FLICKA" with Roddy McDowall

EXTRA!  
"PEOPLE ON PARADE"  
COLOR CARTOON