

Michigan State News

MSC DAILY STUDENT PUBLICATION

VOL. 43, NO. 70

EAST LANSING, MICHIGAN — THURSDAY, JANUARY 17, 1952

WEATHER:
CLOUDS, RAIN
TEMPERATURE SAME

FIVE CENTS

Legislative Experiment

Executive Weakest Branch of College's Student Government

Editor's Note: This is the fourth in a series of eight articles dealing with MSC's Student Government. The articles represent an attempt to compare and analyze the strengths and weaknesses of the new constitution (its predecessor.)

By JIM SMALEGGAN

State News Associate Editor

and

DEAN WAKEFIELD

State News Editorial Assistant

Executive branch of any democratic government traditionally is known as the weak branch. Presidents are as figureheads, left-overs of the age-old monarch.

In a somewhat weaker position is the head of the State College's Student Government.

The President of the United States as an example, we can first point that while that office carries to power on all legislation, MSC's Student Government has no such power. This veto power has long been the strongest link in a balance of power between branches of government.

Under the old constitution, the president had the power to veto, with the approval of the legislative body, members of the Council. The new document gives him that privilege, and provides, instead, that the president have the authority to

Create such agencies as he deems necessary to carry out the executive functions of the Student Government.

Appoint the chairmen of the agencies, and, with the approval of the Congress, the agencies members. Make, upon his request, a personal appearance before the student organization or governing group.

Require reports from any student organization.

Exercise such other powers as are usually incident to such an office.

The last clause is, of course, the president's elastic clause. It gives him the power to call special meetings of Congress, a power which is not specifically delegated to him as it was under the old constitution.

Basically, the Board remains the same as it did under the old document.

The Board consists of Speaker of the Congress, president of major governing bodies (defined by an ordinance of the old constitution), the president of Union Board, the

See LEGISLATIVE EXPERIMENT, Page 6.

Top Scheduled

Spring Tour Planned for Men's Glee Club

Men's Glee Club has scheduled its third annual concert tour for March 21-29, according to John A. manager of the group.

The tour will include 13 performances at various high schools and alumni clubs.

It is sponsored by the Men's Glee Club and the Men's Glee Club.

The tour will include 13 performances at various high schools and alumni clubs.

It is sponsored by the Men's Glee Club and the Men's Glee Club.

The tour will include 13 performances at various high schools and alumni clubs.

It is sponsored by the Men's Glee Club and the Men's Glee Club.

The tour will include 13 performances at various high schools and alumni clubs.

It is sponsored by the Men's Glee Club and the Men's Glee Club.

The tour will include 13 performances at various high schools and alumni clubs.

It is sponsored by the Men's Glee Club and the Men's Glee Club.

The tour will include 13 performances at various high schools and alumni clubs.

It is sponsored by the Men's Glee Club and the Men's Glee Club.

The tour will include 13 performances at various high schools and alumni clubs.

It is sponsored by the Men's Glee Club and the Men's Glee Club.

The tour will include 13 performances at various high schools and alumni clubs.

It is sponsored by the Men's Glee Club and the Men's Glee Club.

The tour will include 13 performances at various high schools and alumni clubs.

It is sponsored by the Men's Glee Club and the Men's Glee Club.

The tour will include 13 performances at various high schools and alumni clubs.

It is sponsored by the Men's Glee Club and the Men's Glee Club.

The tour will include 13 performances at various high schools and alumni clubs.

President Proposes Legislation

Active Participation Called For By Sheets

By DICK BERGLUND

Pres. Sheets called on Congress for more active participation efforts during the current term and extended a list of recommendations for action in his mid-year message last night.

The president also gave government members a verbal pat on the back for their "rapid advances" in handling an entirely new situation "stemming from the adoption of the new constitution."

During regular session the Congress passed a committee recommendation naming members for a Resource Board, composed of members of the teaching staff of the college. The members selected are Prof. Russell Nye, head of the English Department; Prof. Paul Bagwell, head of the Writing and Spoken English Department; Prof. James Miller, Political Science; Dr. Arthur Jacobs, effective living instructor; Prof. Duane Gibson, sociology; and Prof. Gerald Prescott, botany.

The Board will meet with three appointed members of the Congress at least once every month to discuss matters "deemed to be for the good of Michigan State College."

Congress also passed a resolution backing up the Senior Council's endeavors to obtain a Sunday commencement as suggested by Pres. Sheets.

A thorough investigation of the cost of textbooks by a Congress committee was included in the president's recommendations. Several other recommendations included:

1. Elimination of final exams for all graduating seniors, regardless of the term of graduation.

2. A system of course and teacher evaluation for all courses.

3. Student representation in the Lecture-concert Series planning group.

4. Improvement of the condition of campus walks during the winter.

5. A credit lecture course conducted by administration officials explaining and developing Student Government.

Another suggestion for an immediate settlement of a date for the vote on the student tax proposal was not acted upon by the Congress. Sheets also recommended that the tax be adopted on a one-year trial basis and be put to a final vote of the students next year.

Reviewing the accomplishments of the government during the past term, Sheets cited especially the works of the Judiciary, the Department of High School Cooperation, and the establishment of better harmony between the Student Government and the administration.

Display Includes Graduate's Work

A graphic art exhibition, including a work by Mar Jean Katrien, 1947 graduate of MSC, is now on display in the Art Building, South Campus.

Included in the exhibition are 51 etchings and engravings. Most of the works are in black and white but some color prints are included.

The exhibition is being shown in the Art Building, South Campus.

Included in the exhibition are 51 etchings and engravings. Most of the works are in black and white but some color prints are included.

The exhibition is being shown in the Art Building, South Campus.

Included in the exhibition are 51 etchings and engravings. Most of the works are in black and white but some color prints are included.

The exhibition is being shown in the Art Building, South Campus.

Included in the exhibition are 51 etchings and engravings. Most of the works are in black and white but some color prints are included.

The exhibition is being shown in the Art Building, South Campus.

Included in the exhibition are 51 etchings and engravings. Most of the works are in black and white but some color prints are included.

The exhibition is being shown in the Art Building, South Campus.

Included in the exhibition are 51 etchings and engravings. Most of the works are in black and white but some color prints are included.

The exhibition is being shown in the Art Building, South Campus.

Included in the exhibition are 51 etchings and engravings. Most of the works are in black and white but some color prints are included.

The exhibition is being shown in the Art Building, South Campus.

Included in the exhibition are 51 etchings and engravings. Most of the works are in black and white but some color prints are included.

The exhibition is being shown in the Art Building, South Campus.

Included in the exhibition are 51 etchings and engravings. Most of the works are in black and white but some color prints are included.

The exhibition is being shown in the Art Building, South Campus.

Included in the exhibition are 51 etchings and engravings. Most of the works are in black and white but some color prints are included.

The exhibition is being shown in the Art Building, South Campus.

Included in the exhibition are 51 etchings and engravings. Most of the works are in black and white but some color prints are included.

The exhibition is being shown in the Art Building, South Campus.

Included in the exhibition are 51 etchings and engravings. Most of the works are in black and white but some color prints are included.

The exhibition is being shown in the Art Building, South Campus.

Included in the exhibition are 51 etchings and engravings. Most of the works are in black and white but some color prints are included.

The exhibition is being shown in the Art Building, South Campus.

Included in the exhibition are 51 etchings and engravings. Most of the works are in black and white but some color prints are included.

The exhibition is being shown in the Art Building, South Campus.

Included in the exhibition are 51 etchings and engravings. Most of the works are in black and white but some color prints are included.

The exhibition is being shown in the Art Building, South Campus.

Included in the exhibition are 51 etchings and engravings. Most of the works are in black and white but some color prints are included.

The exhibition is being shown in the Art Building, South Campus.

Included in the exhibition are 51 etchings and engravings. Most of the works are in black and white but some color prints are included.

The exhibition is being shown in the Art Building, South Campus.

Included in the exhibition are 51 etchings and engravings. Most of the works are in black and white but some color prints are included.

The exhibition is being shown in the Art Building, South Campus.

Included in the exhibition are 51 etchings and engravings. Most of the works are in black and white but some color prints are included.

The exhibition is being shown in the Art Building, South Campus.

Included in the exhibition are 51 etchings and engravings. Most of the works are in black and white but some color prints are included.

The exhibition is being shown in the Art Building, South Campus.

Included in the exhibition are 51 etchings and engravings. Most of the works are in black and white but some color prints are included.

The exhibition is being shown in the Art Building, South Campus.

Included in the exhibition are 51 etchings and engravings. Most of the works are in black and white but some color prints are included.

The exhibition is being shown in the Art Building, South Campus.

Included in the exhibition are 51 etchings and engravings. Most of the works are in black and white but some color prints are included.

The exhibition is being shown in the Art Building, South Campus.

Included in the exhibition are 51 etchings and engravings. Most of the works are in black and white but some color prints are included.

River Rise Normal

The Red Cedar River is up only a "natural and reasonable amount," according to Milton Baron of the Landscape and Architectural Department. A considerable rise in the water level is a normal condition with thawing ground and warm rain, he said.

Bill to Give MSC Police Deputy Rank

Off-Campus Powers Stated in Proposal

Campus-police would become permanent deputy sheriffs of Ingham County if a bill introduced into the State House of Representatives yesterday becomes law.

The bill, introduced by Rep. Lindemer (R-Ingham County), also would make it possible for campus officers to be tried under Michigan state laws.

Lindemer said the proposed statute will clarify any doubts about the status of the campus police since their present power as deputies of the County must be renewed yearly.

The bill would also make clear rights of the campus force to make off-campus arrests if offenders are apprehended in immediate pursuit after committing a misdemeanor on campus.

College officials could try misdemeanors under college ordinances or could turn information over to the district attorney of Ingham County if they felt such action were necessary.

Actually, the proposal would make trial under state law permissible but not necessary, Prof. Arthur Brandt, head of the Police Administration Department, pointed out. Police powers of the campus organization would be about the same as Lansing and East Lansing forces.

The bill went to the House Judiciary Committee yesterday and is expected out in the near future.

Red Ultimatum Brushed Aside As Jets Tangle

By The Associated Press

The air war flared anew in Korea Wednesday as truce negotiators at Panmunjon bickered further over prisoners of war.

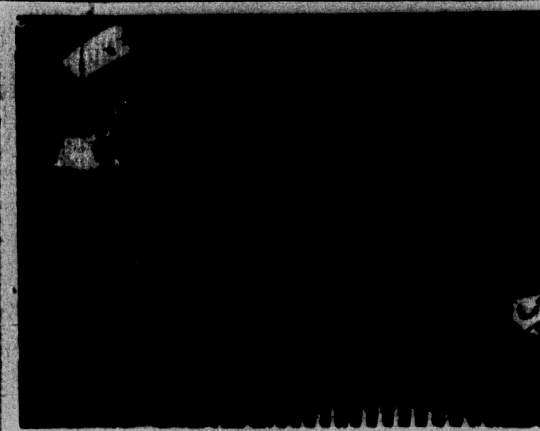
In three battles involving nearly 140 planes, U.S. Air Force Sabres jets damaged two of the enemy's swift red-nosed MiGs.

At the truce site, Allied negotiators brushed aside a Red threat "to fight to the end" if 20,000 Chinese prisoners are turned over to Chiang-Kai-Shek's Formosa government.

The U.S. denied any such intent and announced it will press charges "at the earliest opportunity" that the Communists have violated the Geneva Convention's provisions dealing with PW camps.

Aground, Allied raiding parties grappled with Chinese troops in inconclusive fighting on the western front.

The sun came out, the mercury rose to the low 40's but snow still covered the bleak, 145-mile front.



Mrs. Stan Kirby, Red Cross Nurse Aide, watches Armed Forces Col. Clarence C. Clendenen as he donates a pint of blood in the ROTC drive. The program started Monday and will end Friday.

Lots of Volunteers!

ROTC Blood Drive Reaches 400 Pints

Approximately 400 pints was yesterday's tally of blood donated in the current drive for ROTC personnel on campus, according to Major John N. Johns.

In the race between Air Force and Army, the Army is reported to outnumber AF donors. However, final figures will not be computed until the end of the week.

A plaque will be awarded the winning branch.

The drive, sponsored by the Cadet Military Advisory Board, enters its fourth day this morning and ends tomorrow.

Red Cross units handling the volunteers are located in Demonstration Hall, Room 9. Donors must make appointments in ROTC offices or by contacting ROTC instructors before giving blood.

Any donor under 21 must have parental permission.

The blood-giving process requires about 40 minutes and is followed with coffee and doughnuts. The Red Cross can handle about seven donors at one time and the drive is restricted to members of ROTC units on campus.

Men who donated blood in the all-campus drive last November can now contribute another pint, since the waiting period required by the Red Cross has elapsed.

Donors are asked not to eat foods containing fat within four hours before giving blood. Foods on the don't list include butter, eggs, milk and candy.

Students who have an allergy or have had a penicillin shot in the last few weeks cannot donate.

Students Miss Job Contacts, Says Skamser

By PRISCILLA HALL

Engineers are not taking advantage of a wonderful opportunity, Harold Skamser, chairman of the Placement Committee for the Engineering School, said yesterday.

Many companies are sending personnel-men to MSC to interview prospective engineers for their companies. Response from students has been very poor, according to Skamser.

Skamser pointed out that, because of the draft situation, many of the men have thought it a waste of time to be interviewed now and will wait until after their period of time in the service.

Many personnel men, of both large and small companies, are willing to hire for two or three months. The company wishes to make contacts because of the expected shortage of engineers in the next ten years, Skamser said.

"Chances are fairly good, although no guarantee is offered, that the companies may be able to get deferments for graduates after they are hired," he added.

"From the senior's point of view, interviewing would be good experience. Some may be well qualified to do it and any contacts are a running start. The men have everything to gain and nothing to lose."

Never again will the engineering students have the opportunity to go just across the street to be interviewed. The companies are coming to them now, but later the men will have to seek them out, Skamser said.

Members of the ROTC are also urged to take advantage of this service. Interviews take about 20 minutes.

Isolated Train Victims Saved

Snowplows Gain Passage To Buried Streamliner

EMIGRANT GAP, Calif. (AP)—Picked out of the freezing cold that had locked them in a snow-bound streamliner train since Sunday, 222 men, women and children were safe and warm again last night.

Snowplows finally had reached them and a rescue train had pulled up beside the lodges which had given them warm and welcome temporary haven after they were rescued from the streamliner.

Southern Pacific Railroad officials said all were aboard the rescue train en route to Oakland and San Francisco by 9 p.m. (EST).

Shelby Race, a Lansing industrialist was among the first group of passengers rescued from the snowbound streamliner last night. He was reported well and safe.

Race, who lives at 3314 Parkview, is head of the Lansing Co., a manufacturing firm.

Great snowplows slashed a route to the 222 travelers yesterday morning.

They began leaving the virtually buried Southern Pacific luxury streamliner, City of San Francisco, shortly before noon. It had been their cold and cheerless home since it bucked into a snowslide, then froze to the tracks.

A relief train, with clean, warm pullmans and piping hot galley in the diners, followed the railroad snowplow that finally was able to cut its way over the rails to this mountain community.

Meanwhile, a highway plow had bucked and churned its way through drifts on US-40, the famed Donner Summit route, until a path had been cut to a point opposite the buried streamliner.

Those aboard the "City"—192 passengers and a crew of 30—had 1,000 feet to go to the highway. Snow tractors hauled those who, when a walk was too much, a fleet of autos and trucks had been marshalled in a cleared assembly area at the highway. They moved the rescued group to Nyack Lodge, about four miles away, and to other lodges along the route. There they found the cheer, warmth of log fires and the precious and long-denied luxury of warm water.

The streamliner had been without all but the most elemental facilities since its fuel was exhausted and its water supplies frozen by the extreme cold of the 5,500-foot high Yuba Gap country.

Twenty-seven of the grimy, weary and cold travelers were taken to Nyack Lodge in the first trip the auto-truck convoy made. Thereafter, round trips were made as fast as the slippery road could be traveled, but it was generally a slow process.

After all had rested for awhile, and the grime and muckiness of constantly-frozen clothing had been shed, the 222 persons were to board the relief train.

The relief train, with clean, warm pullmans and piping hot galley in the diners, followed the railroad snowplow that finally was able to cut its way over the rails to this mountain community.

Meanwhile, a highway plow had bucked and churned its way through drifts on US-40, the famed Donner Summit route, until a path had been cut to a point opposite the buried streamliner.

Those aboard the "City"—192 passengers and a crew of 30—had 1,000 feet to go to the highway. Snow tractors hauled those who, when a walk was too much, a fleet of autos and trucks had been marshalled in a cleared assembly area at the highway. They moved the rescued group to Nyack Lodge, about four miles away, and to other lodges along the route. There they found the cheer, warmth of log fires and the precious and long-denied luxury of warm water.

The streamliner had been without all but the most elemental facilities since its fuel was exhausted and its water supplies frozen by the extreme cold of the 5,500-foot high Yuba Gap country.

Twenty-seven of the grimy, weary and cold travelers were taken to Nyack Lodge in the first trip the auto-truck convoy made. Thereafter, round trips were made as fast as the slippery road could be traveled, but it was generally a slow process.

After all had rested for awhile, and the grime and muckiness of constantly-frozen clothing had been shed, the 222 persons were to board the relief train.

The relief train, with clean, warm pullmans and piping hot galley in the diners, followed the railroad snowplow that finally was able to cut its way over the rails to this mountain community.

Meanwhile, a highway plow had bucked and churned its way through drifts on US-40, the famed Donner Summit route, until a path had been cut to a point opposite the buried streamliner.

Those aboard the "City"—192 passengers and a crew of 30—had 1,000 feet to go to the highway. Snow tractors hauled those who, when a walk was too much, a fleet of autos and trucks had been marshalled in a cleared assembly area at the highway. They moved the rescued group to Nyack Lodge, about four miles away, and to other lodges along the route. There they found the cheer, warmth of log fires and the precious and long-denied luxury of warm water.

The streamliner had been without all but the most elemental facilities since its fuel was exhausted and its water supplies frozen by the extreme cold of the 5,500-foot high Yuba Gap country.

Twenty-seven of the grimy, weary and cold travelers were taken to Nyack Lodge in the first trip the auto-truck convoy made. Thereafter, round trips were made as fast as the slippery road could be traveled, but it was generally a slow process.

After all had rested for awhile, and the grime and muckiness of constantly-frozen clothing had been shed, the 222 persons were to board the relief train.

The relief train, with clean, warm pullmans and piping hot galley in the diners, followed the railroad snowplow that finally was able to cut its way over the rails to this mountain community.

Meanwhile, a highway plow had bucked and churned its way through drifts on US-40, the famed Donner Summit route, until a path had been cut to a point opposite the buried streamliner.

Those aboard the "City"—192 passengers and a crew of 30—had 1,000 feet to go to the highway. Snow tractors hauled those who, when a walk was too much, a fleet of autos and trucks had been marshalled in a cleared assembly area at the highway. They moved the rescued group to Nyack Lodge, about four miles away, and to other lodges along the route. There they found the cheer, warmth of log fires and the precious and long-denied luxury of warm water.

The streamliner had been without all but the most elemental facilities since its fuel was exhausted and its water supplies frozen by the extreme cold of the 5,500-foot high Yuba Gap country.

Twenty-seven of the grimy, weary and cold travelers were taken to Nyack Lodge in the first trip the auto-truck convoy made. Thereafter, round trips were made as fast as the slippery road could be traveled, but it was generally a slow process.

After all had rested for awhile, and the grime and muckiness of constantly-frozen clothing had been shed, the 222 persons were to board the relief train.

The relief train, with clean, warm pullmans and piping hot galley in the diners, followed the railroad snowplow that finally was able to cut its way over the rails to this mountain community.

Meanwhile, a highway plow had bucked and churned its way through drifts on US-40, the famed Donner Summit route, until a path had been cut to a point opposite the buried streamliner.

Those aboard the "City"—192 passengers and a crew of 30—had 1,000 feet to go to the highway. Snow tractors hauled those who, when a walk was too much, a fleet of autos and trucks had been marshalled in a cleared assembly area at the highway. They moved the rescued group to Nyack Lodge, about four miles away, and to other lodges along the route. There they found the cheer, warmth of log fires and the precious and long-denied luxury of warm water.

The streamliner had been without all but the most elemental facilities since its fuel was exhausted and its water supplies frozen by the extreme cold of the 5,500-foot high Yuba Gap country.

Twenty-seven of the grimy, weary and cold travelers were taken to Nyack Lodge in the first trip the auto-truck convoy made. Thereafter, round trips were made as fast as the slippery road could be traveled, but it was generally a slow process.

After all had rested for awhile, and the grime and muckiness of constantly-frozen clothing had been shed, the 222 persons were to board the relief train.

The relief train, with clean, warm pullmans and piping hot galley in the diners, followed the railroad snowplow that finally was able to cut its way over the rails to this mountain community.

The NEWS IN BRIEF

British Seize Police

CAIRO (AP)—British troops, backed by tanks and jet planes, seized between 120 and 160 Egyptian police yesterday in an anti-guerrilla raid on the villages of Tel-Ei-Ken and El Hamamada, 30 miles southwest of Ismailia.

Asks Reappointment

LANSING (AP)—A constitutional amendment to reappoint the Michigan Legislature was proposed yesterday by Rep. Louis C. Cramton (R-Lapeer).

Cigarettes to Go Up

NEW YORK (AP)—A tobacco industry consultant said yesterday the trade was convinced that another increase in cigarette prices is inevitable.

Ad Staff to Meet

All members of the State News advertising staff are required to attend a meeting tonight at 7:15 in the State News office.

Kresge to Open Building In March; Third in Area

East Lansing's newest commercial building is nearing completion.

Michigan State News

Published on class days Monday through Friday, inclusive, during fall, winter and spring terms except days after holidays; weekly during summer term, and one special Freshman Issue between summer and fall terms. Entered as second-class matter under act of March 3, 1879 at the postoffice at East Lansing, Mich. Office located on third floor of Union Hall, Member of the Inland Daily Press and The Associated College Press. Associated with the National Association of College Publishers.

MANAGER Dan McCarty
EDITOR Frank Kene
ADVERTISING DIRECTOR Jim Helmrich
CIRCULATION MANAGER

Financial Suicide

Pressure again has been placed on the college to hold the Michigan State Fair on our campus. The question is nothing new and has been brought up several times in the past by different state agencies.

This time the pressure comes from several groups led by the Citizens Advisory Committee of the Little Hoover Commission.

The groups believe that the fair should be revamped and changed to a strictly agricultural fair. And MSC being an agricultural college, it is their belief that our campus would be a logical place to hold the fair.

The theory of the situation may be all right, but looking into the project reflects shallow thinking on the part of these groups.

Even if the fair could be removed from the commercial basis on which it now operates, just a glance at the State Fair Grounds in Detroit shows the amount of building that would be necessary to such a project.

Last summer in Detroit the fair lost money even when it was operated on a commercial basis with sideshows and a midway. There were more than a million and a half people in the metropolitan area that could visit the fair easily because of its central location.

It would be painful to think where the college would house even half of the throngs that pack the regular fair grounds during the eight-day event.

The buildings that would have to be constructed to handle the livestock alone would start the fair board off with a deficit they might never eliminate.

It must also be readily admitted that it is a lot easier to pack people into a fair of this size when it is in the center of a large metropolitan hub.

Just how people besides interested farmers could be induced to patronize the event in the center of the state without the traditional midway would be a question even the legislators would have a hard time answering.

In the last few years the fair has not been the success it should have been. From all appearances if the fair was moved to the MSC campus the state would be committing financial suicide.

J. M. Roberts, Jr.

Prosperity: Here to Stay?

By J. M. ROBERTS, JR.
Associated Press News Analyst

A United Nations commission reports the world has learned enough about handling unemployment and the like to prevent future economic depressions like that of the 1930's.

The idea is that, at least for the countries with mature economic systems, prosperity is here to stay, although there may be less of it at some times than others.

Yet Europe admittedly faces inability to look after its own defense without interfering seriously with living standards. The British Commonwealth is in the midst of an extremely grave financial crisis which some experts are predicting will bring the collapse of the sterling bloc. And there is a deadly inflation connected with prosperity in the United States which cannot help but remind of the fool's paradise of 1929.

Leaders of the British Commonwealth are meeting in London now to discuss ways and means. The sterling bloc ran a deficit of a billion dollars in October, November and December in its relations with gold and dollar areas, and the end is not in sight.

The situation in France has become so critical that there is actually a movement among taxpayers to do their duty. Traditionally, in France and Italy, businesses just avoid their taxes. Governments have been slow to put on the pressure to collect because of political consequences. Firms which would like to be honest cannot do so and still meet competition.

In no economic expert, but the suspicion has been with me for a long time that the last world-wide depression really was only seemingly ended by war production.

And that having shot up a vast amount of its resources, the world can't really be better off than it was 12 or 13 years ago. Imbalances between the haves and have-nots are just as pronounced as ever, in a world sense, and however old-fashioned it may sound, that is still the problem which is fundamental to the cold war.

PATRONIZE STATE NEWS
ADVERTISERS

FOR
YOUR
TERM PARTY
CHARLES
OSBORNE'S
ORCHESTRA

For Audition Appointment
Please Call 8-6072

RUSH SMOKER DELTA SIGMA PI

PROFESSIONAL BUSINESS FRATERNITY
CORDIALLY INVITES ALL MEN ENROLLED IN
Business Administration, Hotel Administration
or Economics

to a smoker to be held
TONIGHT
327 HILLCREST
7:30 P.M.



INFORMATION

GERMAN CLUB
7:30 p.m., International Center.

WATER CARNIVAL COMMITTEE
8:30 p.m., Room 32, Union. All interested in working on carnival should attend.

INTER-VARSITY CHRISTIAN FELLOWSHIP
7:30 p.m., Room 33, Union.

SPARTAN WIVES
7:30 p.m., Women's Gym. Basketball practice.

ALPHA DELTA SIGMA
7 p.m., Room 34, Union.

DAIRY CLUB
7:30 p.m., 204 Dairy Building.

SCABARD AND BLADE
8:30 p.m., Tower Room, Union. Informal attendance requested.

KAPPA ALPHA MU
8 p.m., Darkroom, Union.

ISA RIDE BUREAU
8 a.m. to 5 p.m., Berkey Hall.

ALPHA DELTA THETA
7 p.m., 120 Berkey Hall.

TAU BETA PI
7 p.m., 403 Olds Hall.

FAU SIGMA
7 p.m., Old College Hall, Union. Pledge smoker.

SIGMA EPSILON
8:30 p.m., Old College Hall, Union.

SPAR-CHAM WIVES
8 p.m., Room 9, Home Ec Building.

MSC SKI CLUB
8 p.m., 116 Natural Science Building.

SPARTAN WEIGHTLIFTING CLUB
7:15 p.m., lifting room, Jensen Gym.

YMCA
Cabinet and committee chairmen, 4 p.m., YMCA office.

WOLVERINE
Copy meeting, 7:30 p.m., Wolverine office.

DELTA GAMMA NU
7 p.m., fencing room, Women's Gym.

SAILING CLUB
7 p.m., sailing school, 7:45 p.m., racing school, Room 35, Union.

FRESHMAN AFFAIRS COMMITTEE
7 p.m., Union Board Room.

UPPER PENINSULA CLUB
7 p.m., Room 36, Union.

J-HOP ENTERTAINMENT TRIALS
8:30 p.m., Room 31, Union.

Deep in Debt

A misunderstanding about paying federal taxes for military draftees has the ROTC at Penn State in debt to the tune of \$1500. Last semester's committee has asked Uncle Sam to exempt them from the rest of the debt since it was incurred in 1947, 1948, 1949, and 1950, and past committee members have graduated. If Uncle Sam says no, the boys may have to hock their uniforms.

Crossword Puzzle

ACROSS
1. Tissue
2. 1940's music
3. Journeys
4. Amusement
5. Amusement
6. Amusement
7. Amusement
8. Amusement
9. Amusement
10. Amusement
11. Amusement
12. Amusement
13. Amusement
14. Amusement
15. Amusement
16. Amusement
17. Amusement
18. Amusement
19. Amusement
20. Amusement
21. Amusement
22. Amusement
23. Amusement
24. Amusement
25. Amusement
26. Amusement
27. Amusement
28. Amusement
29. Amusement
30. Amusement
31. Amusement
32. Amusement
33. Amusement
34. Amusement
35. Amusement
36. Amusement
37. Amusement
38. Amusement
39. Amusement
40. Amusement
41. Amusement
42. Amusement
43. Amusement
44. Amusement
45. Amusement
46. Amusement
47. Amusement
48. Amusement
49. Amusement
50. Amusement
51. Amusement
52. Amusement
53. Amusement
54. Amusement
55. Amusement
56. Amusement
57. Amusement
58. Amusement
59. Amusement
60. Amusement
61. Amusement
62. Amusement
63. Amusement
64. Amusement
65. Amusement
66. Amusement
67. Amusement
68. Amusement
69. Amusement
70. Amusement
71. Amusement
72. Amusement
73. Amusement
74. Amusement
75. Amusement
76. Amusement
77. Amusement
78. Amusement
79. Amusement
80. Amusement
81. Amusement
82. Amusement
83. Amusement
84. Amusement
85. Amusement
86. Amusement
87. Amusement
88. Amusement
89. Amusement
90. Amusement
91. Amusement
92. Amusement
93. Amusement
94. Amusement
95. Amusement
96. Amusement
97. Amusement
98. Amusement
99. Amusement
100. Amusement

DOWN
1. Record
2. Above
3. Prophecy
4. Head of grain
5. Run out
6. Wan
7. Sheamus's fool
8. Domesticated
9. Death notice
10. Bone of the arm
11. Lively dance
12. Above and in contact with
13. The whole
14. Indisposed
15. Cushion
16. Prominent
17. Pastry
18. Color
19. Create
20. Assist
21. Crafty
22. Underused
23. Moving image
24. Table land
25. In what way
26. Accuse
27. Limited to
28. Given to
29. Small bag
30. Three-handed
31. Impugn
32. Period of time
33. Favorite
34. Impugn
35. Period of time
36. Favorite
37. Impugn
38. Period of time
39. Favorite
40. Impugn
41. Period of time
42. Favorite
43. Impugn
44. Period of time
45. Favorite
46. Impugn
47. Period of time
48. Favorite
49. Impugn
50. Period of time
51. Favorite
52. Impugn
53. Period of time
54. Favorite
55. Impugn
56. Period of time
57. Favorite
58. Impugn
59. Period of time
60. Favorite
61. Impugn
62. Period of time
63. Favorite
64. Impugn
65. Period of time
66. Favorite
67. Impugn
68. Period of time
69. Favorite
70. Impugn
71. Period of time
72. Favorite
73. Impugn
74. Period of time
75. Favorite
76. Impugn
77. Period of time
78. Favorite
79. Impugn
80. Period of time
81. Favorite
82. Impugn
83. Period of time
84. Favorite
85. Impugn
86. Period of time
87. Favorite
88. Impugn
89. Period of time
90. Favorite
91. Impugn
92. Period of time
93. Favorite
94. Impugn
95. Period of time
96. Favorite
97. Impugn
98. Period of time
99. Favorite
100. Impugn

Dorothy Collins,

America's newest sweetheart,
wears this famous

CASINO blouse!

and You'll want to wear it, too!



Dorothy Collins' famous, flattering original Casino Blouse is a soft, sheer nylon tricort... with an all-over tucked front, glittery jewel buttons, contrasting petal velvet tie. Sizes 10 to 14. In white, pink, blue, maize, and magnolia. \$12.95

See the original Dorothy Collins' Casino blouse in action on TV!

Watch your TV page for:

Your Hit Parade
The Robert Montgomery Show
This is Show Business

You'll see Dorothy Collins wearing her Casino Blouse! And then you'll want to try it, buy it!

The Style Shop

EAST LANSING

Letter to the Editor

Senior Class Council Calls For Sunday Commencement

TO THE EDITOR:

It is the unanimous decision of the Senior Class Council that commencement should be held on Sunday, June 8, 1952, rather than as it is now scheduled for Saturday, June 7.

We feel that the College has not taken the students' point of view into consideration when making this decision. It is the feeling of the Council that just consideration was not given to the fact that many students' parents and friends would travel from outside the state. The trip would necessitate them being days from work.

It is our opinion that Saturday, being a working day, with a working day's noise and confusion, does not seem conducive to a quiet commencement day.

In the past the Water Carnival, one of Michigan State's oldest and finest traditions, has been held on Thursday, Friday,

and Saturday of commencement week. The majority of students working on the Carnival are seniors. It seems rather illogical that seniors should have to rush from commencement, leave their parents, and spend that night working on the Water Carnival. This problem could easily be erased by having commencement on Sunday, as it was last year.

Thus far, the administration has kept us in the dark concerning the reasons for Saturday commencement. What are the reasons? The commencement committee says it has no voice in selecting the date. Then who does?

We, the only truly representative group of the class were certainly not consulted.

Soon 3,000 of us will come from Michigan State to attend our Alma Mater. We hope we won't graduate students to alumni with taste in our mouths because of commencement on Sunday.

The Senior Class Council is composed of the class officers and representatives from the groups and covers all class activities.

Little Man On Campus



Staff Members

Editorial Asst. — Dean Wakefield
Sports Editor — Alex Laggis
Feature Editor — Ann Spellan
Society Editor — Vicky Conway
Photo Editor — Jim Mosher
Local Ad. Manager — Pat Sheehy
National Ad. Manager — Martha Russell

Night Staff

Night Editor — Al Ternes
Asst. Night Editor — Connie Courtes
Night Sports Editor — Tom Ryan
Wire Editor — Jeff Riker
Night Staff — Mary Anderson, Jo Womack, Cynthia Eaton, Ginny Carter, Joyce Wilson, Bob Gall, Gary Ad, Bill Gushore
Night Ad. Staff — Margaret Fuller

No Towels

An electric-eye machine in the University of Pennsylvania's Houston Hall dries and sterilizes one's hands. No towels are necessary. It was probably invented by some genius who couldn't figure out those paper towel-vending machines around here.

CAMPUS

WHERE THE STUDENTS SHOP FIRST
CLASSIFIED

RATES—Minimum charges for 15 words or less: 1 day, 50c; 3 days, \$1.00; five days, \$1.25 plus 15c service charge for credit. PHONE IN YOUR AD 8-1511, Ext. 260
Each word in excess of 15, 3c per day. 9 to 12 — 1 to 3

AUTOMOTIVE

1949 PLYMOUTH—special de-

luxe 4-door, 8 tube radio, air con-

dition heating, directional signals,

body and interior perfect, almost

new tires, motor carrier, full guar-

antee against oil consumption for

4,000 miles. See it today, \$1,295.

1940 CHEVROLET—special de-

luxe 2-door, heater and radio,

general condition good. \$275.

1941 MERCURY club coupe,

heater and radio, general condi-

tion better than average. \$395.

1935 FORD—2 door, very good

motor and good brakes. \$79.50

MALCOLM MILKS, Inc.

Used Car Lots

Chrysler-Plymouth 1400 E. Michigan

Phone 9-5781

ROYAL DELUXE COMMANDER—

1951 new, All Aluminum 24, 3-piece

bath, 6 rooms in all, including new

four-room apartment. The whole in-

terior of this trailer is in appealing

decor. \$1,495.

AND

DELUXE ZIMMER late 1950, 35'

All Aluminum, top condition, 3-piece

bath, 6 rooms in all, including new

apartment. Both trailers are ready to

be moved into. An not a dealer. An

former MSC student and will de-

velop special price to MSC students. Call

4-4326 or contact Wendell Ramseyer

73

1930 FORD, A-Excellent body, origi-

nal finish. Good tires and engine

Gasoline heater and sealed beams

\$165.00. \$122 North Grand River, US-

16 ave. near airport. Sat. Sun. and

evenings. 5-5633

1940 FORD deluxe, 2-door. Radio,

heater, spotlight, nice body. Motor

works. Reasonable. Call Joe

139 Mason Hall.

11 FORD tudor, very clean, good

body, rebuilt motor, needs work

radio, heater. Phone 8-7376.

79

FOR SALE

* COLLEGE SEAL-stationery, a stu-

dent special—40 sheets at 50c. Best

131 East Grand River, East Lansing,

Michigan.

DOUBLE breasted tuxedo in good

shape, size 36. Call or inquire 8-9273.

1206 Michigan Ave.

YOUTH BED and mattress, \$30.00;

double breasted tux, 40 long, \$30.00;

living room table, \$12.00. Phone 8-1993.

MAN'S three-piece tuxedo, size 34

or 36, accessories included. Call

5-2812.

FURNITURE — Unfinished chests,

bookcases, drop-leaf tables, linoleum,

carpet, mattresses, springs, beds, stu-

dent desks and chairs.

Complete Home Furnishings—

Use our Easy Payment Plan, special

consideration given students and

teachers.

LANSING WAREHOUSE

FURNITURE CO.

313-315 E. Michigan Ave. - Ph. 4-1340

USED furniture, clothing for entire

family. 1246 Turner Street, 327 River

Street, Lansing. Open 6 days a week,

8-9.

COCA COLA vending machine,

route over 3 cases, excellent buy for

Frax or Sorority. See at the Soundout

Shop, 232 M.A.C.

TUX, 37 reg. Worn twice. Pants,

coat and vest \$20. Call Roger, 8-9981.

Smoke Shop.

\$125 TUXEDO for \$48 midnight

blue, double breasted. Size 36. Call

8-7699.

1935 FORD—2 door, very good

motor and good brakes. \$79.50

HOUSING

FOR SALE East Lansing (close)

ideal family home, 3 bedroom, case

red, built 1950. Large living room

and dining room, 2-car garage. This

fine home is located on 2 full acres

of land just 5 minutes from the col-

lege. Call to inspect the home today!

Green Realty Company, Realtors

5-0878, evenings Mr. Warner, 4-4720

71

SPARTAN HALL, Double rooms for

men. Good beds, large closets. Steam

Scholarship Program Carries 1800 Students

High School Grads And MSC Students Aided By Funds From School And Alumni

By BILL GINSBURG

Approximately 1,800 students at MSC receive partial aid in the form of scholarships offered by the college, alumni organizations, and friends. The college has an entrance scholarship plan which awards one scholarship to each high school in Michigan and has a number of scholarships in reserve for high schools with larger senior classes. A number of those scholarships offered yearly is for the student's freshman year, renewable each fall semester as long as the student maintains a 2.6 average. There are a limited number of scholarships available to students already in attendance who have completed fifty hours of college work.

Selection of candidates for scholarships is based on the student's ability and quality of work. The students have to maintain their stay at MSC on scholarships. Donor organizations, trust funds, and private trust funds contribute to the fund. The college's financial aid committee awards money to the students and in the organization of the fund. A special fund is set up by the college. It picks the students who are the initial recipients and determines how long the fund will continue.

Among this latter group of the annual scholarships, there is a scholarship awarded by the Western Golf Association called the Evans Scholarship. The daughters of the American Revolution has a scholarship at MSC also.

Twenty-three junior college students and 80 for foreign students.

Holiday on Ice Matinee Planned

"Holiday on Ice", currently at the ice arena in the Michigan Hall, begins its third season here tonight at 8:30 p.m. and six shows. The matinee starts at 2:30 p.m. and afternoon with the final show at 8:30 the same night.

Student Music Recital Scheduled By WKAR

WKAR will present a regular student music recital on Friday at 2:15 p.m. The program will feature VanSickel, Lansing junior, singing "Comme tu le vois" by A. Thomas and "Sour Mountain" by Ernest Bacon. Also, Lansing freshman, present "O del mio dolce ardor" by Cristoforo Gluck and "If I Had Your Heart" by Felix Mendelssohn. The piano accompanist for the singers will be Vera of Lansing junior.

Michigan State News

Features

NIGHT EDITOR — BILL GINSBURG

Faculty Snapshot

Instructor from Korea Gives Views on Truce

By HAL WEAVER

Stalemated truce talks in Korea take on added significance for Francis Barnhart, an instructor in Written and Spoken English.

Barnhart was born in Korea where his father was general secretary of the YMCA, and was present in Korea when the Red invasion began.

He sees the need for an early peace and rebuilding of Korea. Barnhart feels that otherwise "After East" Eastern nations will follow the line of least resistance and turn to communism, for they will see in Korea that side with the United States means war and destruction.

Barnhart came to the United States in 1936, receiving a bachelor's degree from Oberlin College and a master's from the University of Iowa.

During the Second World War, he worked as a special agent for U.S. counter intelligence in Burma and China.

After his discharge in 1946, Barnhart taught English at Drake University. He came to MSC in 1948.

His work in Written and Spoken English was interrupted in 1949 when he was asked to work with the State Department's educational project in Korea. His job was to establish and direct courses in English to doctors, officials, and educators.

With the Red invasion all American civilians were ordered out of Korea. After evacuating his wife and son to Japan, Barnhart remained in Korea to help evacuate religious missions in the country to places of safety.

Returning to his family in Japan, he worked for the Psychological Warfare Department and this fall he returned to the United States and MSC.

It is Barnhart's belief that the future safety of our nation lies in the policies of our State Department. He was appalled at the seeming lack of concern over the danger to our principles of democracy that exist in the Communist threat.

Barnhart states that he sees no chance of a complete military unification of Korea, amounting to a partial defeat of the United States by the Communists in the eyes of the Far-East nations.

First Editions, Original Plays Found in Rare Book Room

By BETTY ANNE MAUSTELLER

One of the little-known opportunities open to MSC students is the right to use the facilities of the Rare Book Room in the Library.

There are approximately 3,000 volumes in the collection, valued as high as \$500 each.

The collection was begun in 1886. At that time Mrs. T. C. Abbott donated a copy of "The Letters of Saint Jerome" in memory of her husband, a former president of the college. This gift is valued at \$100.

At present the library has rare books in the field of religion, the social sciences, philology, science, useful arts, fine arts, literature, and history.

Included among the rarities is an interesting 1768 page translation of Webster's Dictionary into Chinese, and the Thomas Johnson reprint of Gerard's "Herball".

There is also a copy of Eugene O'Neill's important play, "The Emperor Jones," as it originally appeared in the January, 1921 issue, of the "Theatre Arts" magazine. A first edition of David Copperfield, valued at \$250, is also shelved in the room.

A number of these books have been donated by the "Friends of the Library," an organization interested in books and in Michigan State College. They assist in bringing to the college important library materials. The rest of the collection has been purchased by the college or given by outsiders interested in its welfare.

According to J. E. Towne, college librarian, students do not use the books as much as they could. They cannot be taken from the library, but anyone may have access to them.

PATRONIZE STATE NEWS ADVERTISERS

MICHIGAN

NOW SHOWING

BURT LANCASTER

IN

"Ten Tall Men"

with Jody Lawrence, Gilbert Roland and Kierow Moore

— P. L. U. S. —

"WHO'S KITTEN WHO?"

CARTOON

"CANDID MICROPHONE"

LATEST NEWS EVENTS

GLADNER

3 — DAYS — 3

"Tales of Hoffman"

BY TECHNICOLOR

with Moira Shearer and Robert Helpmann

2 — Shows Daily — 2

2:30 and 8:15

All Seats Reserved

LANSING

"Reunion in Reno"

with Mark Stevens and Peggy Dow

— P. L. U. S. —

"Never Trust A Gambler"

with Dane Clark and Cathy O'Donnell

— P. L. U. S. —

"Mr. Imperium"

with Lana Turner, Fritz Pinza and Marjorie Main

— AND —

"G.I. Jane"

with Jean Porter and Tom Neal

— P. L. U. S. —

2 — DAYS — 2

"Mr. Imperium"

with Lana Turner, Fritz Pinza and Marjorie Main

— AND —

"G.I. Jane"

with Jean Porter and Tom Neal

Purdue Tradition Requires Spartan Effort

By the Associated College Press

Purdue University recently held a pep rally which began at 11:45 p.m. Reason for this odd hour was explained by a part of the entertainment—an attempt of a well-known campus personality to become a "true Boilermaker" of 12.

At the first stroke of midnight he was to try to kiss his girl while on the steps of the auditorium, run to John Purdue's grave and get back to kiss his girl again before the last stroke of 12.

Liebermann

PRE-INVENTORY

Clearance

OF FINE LUGGAGE

- LADIES MATCHED CASES
- LADIES WEEK-END & OVERNITES
- HAT & SHOE CASES
- MEN'S TWO-SUITERS and COMPANIONS
- ROOMY FORTNIGHTERS
- FINE LEATHER CASES

REDUCED $\frac{1}{4}$ to $\frac{1}{2}$

Liebermann

TRUNK CO.

107 SOUTH WASHINGTON AVE.
Travelware — Gifts — Handbags



THE FABULOUS FLATTERY OF FORMALS...

A bit of lace, a dash of net, and presto you're changed into a picture of elegance. Choose your formal from our large selection of Taffetas, Nylon Nets, and Pastel Brocades, all beautifully trimmed with touches of rhinestone, sequins, and lovely, lovely stoles, all in a variety of colors and styles.

SIZES — 9-15 — 10-18

\$ 17⁹⁸ TO \$ 35⁰⁰



LOCATED FOR YOUR CONVENIENCES AT

EAST LANSING
205 E. Grand River

LANSING
314-316 Washington

See us now for your J-Hop formal and use our convenient Lay-a-way plan.

ucon

NOW SHOWING

6:00 — 8:00 — 10:00

5 STAR
MUST-SEE
MUSICAL
JAMBOREE!

TWO
TICKETS TO
BROADWAY

TECHNICOLOR
TONY MARTIN
MADEIRA
GLOISIE
EDDIE
ANN



CARTOON — NEWS

Millner Takes Over Eagles

PHILADELPHIA (AP)—Assistant Coach Wayne Millner was named head coach yesterday by the Philadelphia Eagles of the National Football League. Millner took over head coaching duties during the 1951 season after illness sidelined Alvin (Bo) McMillin.

Veteran players Frank Reagan and Vic Lindsag were named yesterday as assistants to Millner. Jim Trimble was retained as an assistant coach.

VanDervoort's

YOUR MSC SPORTS HEADQUARTERS

Blue Jeans

for all-around campus wear

8 oz. blue denim jeans, sanforized shrink. Snag-proof, double stitched for longer wear. Two styles—one with zipper fly, one without.

\$2.50

Firmly woven, sanforized shrink jeans of 8 oz. denim. Copper riveted for extra wear at all points of strain. Double stitched.

\$2.95

Top quality jeans of 11 oz. blue denim. Copper riveted, double stitched, sanforized shrink. Swing front pocket, zipper fly.

\$3.75

Soft, Comfortable
WHITE COTTON SOX
reg. 39c pr. **25c**



MSC Shapes Slowly

Swimmers to Meet Indiana

By GEORGE WEEKS
A conservative, "We're rounding into shape slowly," was the only comment ventured by Coach Charles McCaffree as the Spartan swimmers prepare to take on Indiana for their first Big Ten competition of the season on Saturday.

It wasn't so much the coming meet with the Hoosiers that worried McCaffree as the over-all Western Conference picture.

The State splashes, number-three collegiate tank team in the country last year, are currently engaged in a process of rebuilding a graduation-riddled squad.

Presently the Spartans aren't as potent as last year . . .

but MSC's opponents are developing into 1952 powerhouses. Namely Ohio State, Michigan, and Purdue.

Although McCaffree cited that he "hasn't been overjoyed with the season so far," he stated that the team balance which has kept Michigan State in the win column has been heartening.

Against the strong Indiana mermen, winners of their season opener with Wisconsin, 51-42, McCaffree will probably continue to juggle his swimmers in various events as against Bowling Green and Iowa State.

The veteran MSC member said that nearly everyone on the varsity, except two divers,

will make the trip to Indiana.

Highboard specialists Ken Coyne and Lewie Michaud are slated to workout at Jenison pool with diving coach Danny Simpson rather than compete in the low board event that is scheduled for the meet.

Jack Hellwege and Don Morey will carry Green and White hopes off the springboard against the Hoosiers.

Several close races are in prospect for the dual meet tussle. Larry Meyer will be challenging State's Bert McLachlan in the distance events and Bruce Aldrich in the individual medley.

Clark Scholes and Tom Payette face tough competition in the sprints from Frank Pisacreta.

A McCaffree-coached team has yet to lose to Indiana, although the all-time Spartan-Hoosier record is six wins and five losses for State.

Last year MSC submerged Indiana 56-37 in Jenison Pool.

30c UNTIL 5 P.M. • 50c AFTER 5 P.M. • 12c KIDDEEN ALWAYS

LAST DAY **STAY** 2 REG WITH

KATIE DID IT **OPERATION DISASTER**

AT 2:30 - 5:25 - 8:35 AT 1:00 - 4:00 - 7:05 - 10:00

FRIDAY & SATURDAY

THEY HAD A DATE **STORY OF A BOY IN**

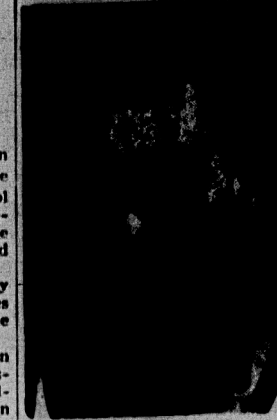
DANGER **BATTLE BACK IN 1862!**

SMUGGLER'S ISLAND **THE RED BADGE OF COURAGE**

JEFF CHANDLER **Audio** **BILL MURPHY MAULDIN**

EVYNN REYES **A NEW GOLDWIN MASTER PICTURE**

AT 2:15 - 5:50 - 7:30 - 10:05 AT 1:00 - 3:30 - 6:05 - 8:45 - 11:10



ERIK FURNETH

Al Dorow Rates Janowicz Best

IONIA (AP)—Here's how State's quarterback Al Dorow of State's undefeated team would compare All-Americans: Vic Janowicz of Ohio State and Dick Kazmaier of Princeton.

"Janowicz was one of the greatest football players I've ever seen. If he had played us with that Michigan State line in front of him he would have run wild."

"Kazmaier probably wouldn't have made the Michigan State first team last year. He ran straight up in comparison to Janowicz who drove through with his head down."

Carl Furillo Signs

BROOKLYN (AP)—Carl Furillo, five-armed Brooklyn outfielder, has signed his 1952 contract; the Dodgers announced yesterday. Furillo received a slight raise, the club said, and is the seventh Dodger in the fold.

PATRONIZE STATE NEWS ADVERTISERS

Sigma Alpha Epsilon RUSH SMOKER

THURSDAY, JAN. 17

7:30 - 9 P.M.

131 BOGUE



Men

B R E C K

You naturally want to keep your hair in the best possible condition. We believe that you will find the Breck Method Hair and Scalp Treatments will simplify your hair problems. AVOID THOSE LONG UNNECESSARY WAITS—THE HEADQUARTERS FOR ALL BRECK PRODUCTS

MSC BARBER SHOP

209 M.A.C. AVE.

8 CHAIRS

Michigan Next Cage Opponent

Spartans Resume Big Ten Action with Ancient Rival

Michigan State's basketball squad will travel to Arbor Saturday night to meet the University of Michigan for the 60th time in a cage rivalry that began in 1897.

The Wolverines hold a wide edge in games won. State's 19, but the Spartans defeated Michigan in both meetings last season.

In the Big Ten race, Michigan has a record of no wins against four setbacks while Michigan State has won one game and lost two.

Both teams have met three common opponents in Princeton, Iowa and Minnesota.

The Spartans defeated Princeton 52-44 while Michigan scored a 62-44 victory over the Tigers. Iowa defeated both squads, MSC fell 61-60 and the Wolverines 54-46. Minnesota also dropped both Michigan colleges, the Spartans by a 53-49 and the University five by a 70-60 score.

Michigan State started off the season by winning its first seven games. However, in the last four starts the Spartans have gone down to defeat three times.

Meanwhile, Michigan, after starting off poorly, has shown steady improvement in the last few games. In its meeting with Illinois, the Wolverines outscored the Illini in the second half but were unable to overcome the first half lead built up by Harry Combes' team.

Penalties have been a major problem for Coach Pete Newell this season. The MSC team has had 278 fouls called against it in 11 games, an average of over 25 per game. Opposing teams have cashed in on the gift shots, sinking 169 points, while State has totaled 151 tallies on free throws.

Michigan State started off the season by winning its first seven games. However, in the last four starts the Spartans have gone down to defeat three times.

Meanwhile, Michigan, after starting off poorly, has shown steady improvement in the last few games. In its meeting with Illinois, the Wolverines outscored the Illini in the second half but were unable to overcome the first half lead built up by Harry Combes' team.

Penalties have been a major problem for Coach Pete Newell this season. The MSC team has had 278 fouls called against it in 11 games, an average of over 25 per game. Opposing teams have cashed in on the gift shots, sinking 169 points, while State has totaled 151 tallies on free throws.

Michigan State started off the season by winning its first seven games. However, in the last four starts the Spartans have gone down to defeat three times.

Meanwhile, Michigan, after starting off poorly, has shown steady improvement in the last few games. In its meeting with Illinois, the Wolverines outscored the Illini in the second half but were unable to overcome the first half lead built up by Harry Combes' team.

Penalties have been a major problem for Coach Pete Newell this season. The MSC team has had 278 fouls called against it in 11 games, an average of over 25 per game. Opposing teams have cashed in on the gift shots, sinking 169 points, while State has totaled 151 tallies on free throws.

Michigan State started off the season by winning its first seven games. However, in the last four starts the Spartans have gone down to defeat three times.

Meanwhile, Michigan, after starting off poorly, has shown steady improvement in the last few games. In its meeting with Illinois, the Wolverines outscored the Illini in the second half but were unable to overcome the first half lead built up by Harry Combes' team.

Penalties have been a major problem for Coach Pete Newell this season. The MSC team has had 278 fouls called against it in 11 games, an average of over 25 per game. Opposing teams have cashed in on the gift shots, sinking 169 points, while State has totaled 151 tallies on free throws.

Michigan State started off the season by winning its first seven games. However, in the last four starts the Spartans have gone down to defeat three times.

Meanwhile, Michigan, after starting off poorly, has shown steady improvement in the last few games. In its meeting with Illinois, the Wolverines outscored the Illini in the second half but were unable to overcome the first half lead built up by Harry Combes' team.

Penalties have been a major problem for Coach Pete Newell this season. The MSC team has had 278 fouls called against it in 11 games, an average of over 25 per game. Opposing teams have cashed in on the gift shots, sinking 169 points, while State has totaled 151 tallies on free throws.

Michigan State started off the season by winning its first seven games. However, in the last four starts the Spartans have gone down to defeat three times.

Meanwhile, Michigan, after starting off poorly, has shown steady improvement in the last few games. In its meeting with Illinois, the Wolverines outscored the Illini in the second half but were unable to overcome the first half lead built up by Harry Combes' team.

Penalties have been a major problem for Coach Pete Newell this season. The MSC team has had 278 fouls called against it in 11 games, an average of over 25 per game. Opposing teams have cashed in on the gift shots, sinking 169 points, while State has totaled 151 tallies on free throws.

Michigan State started off the season by winning its first seven games. However, in the last four starts the Spartans have gone down to defeat three times.

Meanwhile, Michigan, after starting off poorly, has shown steady improvement in the last few games. In its meeting with Illinois, the Wolverines outscored the Illini in the second half but were unable to overcome the first half lead built up by Harry Combes' team.

Penalties have been a major problem for Coach Pete Newell this season. The MSC team has had 278 fouls called against it in 11 games, an average of over 25 per game. Opposing teams have cashed in on the gift shots, sinking 169 points, while State has totaled 151 tallies on free throws.

Michigan State started off the season by winning its first seven games. However, in the last four starts the Spartans have gone down to defeat three times.

Meanwhile, Michigan, after starting off poorly, has shown steady improvement in the last few games. In its meeting with Illinois, the Wolverines outscored the Illini in the second half but were unable to overcome the first half lead built up by Harry Combes' team.

Penalties have been a major problem for Coach Pete Newell this season. The MSC team has had 278 fouls called against it in 11 games, an average of over 25 per game. Opposing teams have cashed in on the gift shots, sinking 169 points, while State has totaled 151 tallies on free throws.

Michigan State started off the season by winning its first seven games. However, in the last four starts the Spartans have gone down to defeat three times.

Meanwhile, Michigan, after starting off poorly, has shown steady improvement in the last few games. In its meeting with Illinois, the Wolverines outscored the Illini in the second half but were unable to overcome the first half lead built up by Harry Combes' team.

Penalties have been a major problem for Coach Pete Newell this season. The MSC team has had 278 fouls called against it in 11 games, an average of over 25 per game. Opposing teams have cashed in on the gift shots, sinking 169 points, while State has totaled 151 tallies on free throws.

Michigan State started off the season by winning its first seven games. However, in the last four starts the Spartans have gone down to defeat three times.

Meanwhile, Michigan, after starting off poorly, has shown steady improvement in the last few games. In its meeting with Illinois, the Wolverines outscored the Illini in the second half but were unable to overcome the first half lead built up by Harry Combes' team.

Penalties have been a major problem for Coach Pete Newell this season. The MSC team has had 278 fouls called against it in 11 games, an average of over 25 per game. Opposing teams have cashed in on the gift shots, sinking 169 points, while State has totaled 151 tallies on free throws.

Michigan State started off the season by winning its first seven games. However, in the last four starts the Spartans have gone down to defeat three times.

Meanwhile, Michigan, after starting off poorly, has shown steady improvement in the last few games. In its meeting with Illinois, the Wolverines outscored the Illini in the second half but were unable to overcome the first half lead built up by Harry Combes' team.

Penalties have been a major problem for Coach Pete Newell this season. The MSC team has had 278 fouls called against it in 11 games, an average of over 25 per game. Opposing teams have cashed in on the gift shots, sinking 169 points, while State has totaled 151 tallies on free throws.

Michigan State started off the season by winning its first seven games. However, in the last four starts the Spartans have gone down to defeat three times.

You've Waited for This Event! Save Now!

SEARS FAMOUS HARMONY HOUSE

SEARS
ROEBUCK AND CO.

Slip Cover Sale

Starts Monday!
Lasts All Week!



YOU SAVE 20% NOW!

READY MADE TO STANDARD FURNITURE STYLES!

- Cord Welled Seams
- Box Pleated Skirts
- Reversible Cushion Covers
- Two Smart Patterns in Coordinated Decorator Colors

"BROADMOOR" Rich, Colorful Floral Design

Built-in Customatic features exclusive with Sears Harmony House Slip Covers. A beautiful pattern on good quality twill with cord welled seams, box pleated skirts and reversible chair cushion, 3 reversible sofa cushions. Dress up and protect your valuable furniture at this low price.

Reg. 19.98 Sofa Covers with Box Pleating on Each Side

Reg. 10.98 Chair Covers
8.78

NOW 15.98

"BAMBOO" Leaf Pattern on Pebble Cloth

A beautiful leaf pattern in tropical colors on heavy pebble cloth. Tailored to fit smoothly on modern furniture. Adjustable feature on arms assures perfect fit. These covers will give new glamour to your old chairs and sofas. Superior quality for those who want the best for less.

Reg. 21.98 Sofa Covers

NOW \$17.58

Reg. 19.98 Davenport Covers

NOW 15.98

Reg. 14.98 Chair Covers
11.98

One Hour Free Parking with a Sears Purchase

Store Hours: 9 A.M. to 5:30 P.M. on Monday, 12 Noon to 9:00 P.M.

SEARS

Use SEARS Easy Payment Plan

Phone 97521

300 East Michigan Ave.

RED CEDAR CO-OP

700 Birch Road — East Lansing

WEEKEND SPECIALS

STEAK SALE

Friday and Saturday
only — Jan. 18, 19
Round, Sirloin, T-bone
79c a lb.

CIGARETTES

WITH COUPON
\$1.85 PER CARTON
(1 Carton Limit)

Donald Duck Orange, Blend Grapefruit Juice, 46 oz. can 27c

Brooks Tomato or Vegetable Soup, Pork and Beans, 10 oz. can 2 for 21c

Beech-Nut Baby Foods Strained, 3 jars for 29c Junior 2 jars for 29c

Barley or Oatmeal Cereals, 8 oz. package 17c

Dinnertime coffee No. 1 bag 70c

Craft Dinner (A Meal for 4 in 7 Min.) 2 pkgs. for 27c

Campbell's Cream of Mushroom or Chicken Gumbo Soup 2 cans for 35c

Chicago College of OPTOMETRY

(Nationally Accredited)

An outstanding college with a splendid professor.

Doctor of Optometry degree in three years for students with six or more credits in specified science courses.

REGISTRATION FEE

Students are granted national recognition by the Department of Defense Selective Service.

Excellent clinical and athletic and recreation facilities. Dormitories on the campus.

CHICAGO COLLEGE OF OPTOMETRY

1837-C Larrabee Street

Chicago 14, Illinois

Matmen Wrestle Panthers Friday

One of the winter season's top athletic attractions is on for Friday night here when the Michigan State Spartans take on the defending NAAU champions from State Teachers College of Cedar Rapids.

Each of the Spartans' winners in their hands full against the team, who boast an NAAU champion in their lineup.

Spartans, who last week won a 16-14 decision over the Spartans, will have to average the 21-10 loss suffered last year at the hands of the Panthers.

The Spartans' lineup will have two changes from the one that won at Pittsburgh. These are at 123 pounds and at 157 pounds, where Gunner, a freshman, will go Friday.

As a result of the week's completed last night, the Spartans' lineup change found the Spartans, East Lansing, taking a 5-4 decision over the Spartans for the 177-pound weight class.

Basketball Opens Snyder 14, West Shaw 9, Win

By RUSS LINABURY

The defending champions in basketball, the 1952 season last year, the Spartans, who last year won the championship of last year, the Spartans.

The Spartans, who last year won the championship of last year, the Spartans, who last year won the championship of last year, the Spartans.

The Spartans, who last year won the championship of last year, the Spartans, who last year won the championship of last year, the Spartans.

The Spartans, who last year won the championship of last year, the Spartans, who last year won the championship of last year, the Spartans.

The Spartans, who last year won the championship of last year, the Spartans, who last year won the championship of last year, the Spartans.

The Spartans, who last year won the championship of last year, the Spartans, who last year won the championship of last year, the Spartans.

The Spartans, who last year won the championship of last year, the Spartans, who last year won the championship of last year, the Spartans.

The Spartans, who last year won the championship of last year, the Spartans, who last year won the championship of last year, the Spartans.

The Spartans, who last year won the championship of last year, the Spartans, who last year won the championship of last year, the Spartans.

The Spartans, who last year won the championship of last year, the Spartans, who last year won the championship of last year, the Spartans.

The Spartans, who last year won the championship of last year, the Spartans, who last year won the championship of last year, the Spartans.

Hockey Squad Beaten, 7-1

Michigan Sextet Proves Too Tough for MSC Six

(Special to the State News by Stan Kurzman)

The University of Michigan hockey team out-shot, out-skated and out-fought Michigan State as the Wolverines dropped the Spartans for the second time this season, 7-1, last night at Michigan Coliseum.

In their previous meeting on State's home ice, the Wolverines won 11-1.

Play was even in the hard-fought opening period until Pat Cooney put Michigan into the lead when he snubbed the puck behind the MSC net and scored at 19:04.

Michigan went into a 4-0 lead in the second period on goals by Doug Mullen, Don McKennell and George Chin before John Mayes, the Spartans' leading goal-getter, countered a lone MSC goal at 42 seconds before the period ended.

Michigan wound up the scoring with three goals in the final period. Mullen and McKennell both got their second scores of the night. Bob Heathcott, the Wolverines' leading scorer who racked up five goals in a two-game series against Minnesota last week, also scored the MSC net.

As in their last meeting, fighting and rough play were as prevalent as hockey. In the first period, MSC's Hal Passerini and Michigan's John Matchett left the game with match penalties for fighting.

The Spartans' usually mild Co-Capt. Bill McCormick tangled with University of Michigan defenseman Reg Shave in the final stanza. Both drew match penalties.

Mild entanglements also occurred between Dick Lord of State and Ron Martinson of the Maize and Blue and the Spartans' Mayes and Michigan's Cooney.



MICHIGAN'S BOB HEATHCOTT

Late Sports Wire...

NEW YORK (AP)—A bid by an unidentified Dallas man to buy the New York Yankees franchise in the National Football League and transfer it to Texas has been rejected, a spokesman for Owner Ted Collins said yesterday.

Among their final meet victims, besides MSC, were Big Ten squads from Illinois, Minnesota and Wisconsin.

In another Phillips last game, the Spartans, who last year won the championship of last year, the Spartans, who last year won the championship of last year, the Spartans.

The Spartans, who last year won the championship of last year, the Spartans, who last year won the championship of last year, the Spartans.

The Spartans, who last year won the championship of last year, the Spartans, who last year won the championship of last year, the Spartans.

The Spartans, who last year won the championship of last year, the Spartans, who last year won the championship of last year, the Spartans.

The Spartans, who last year won the championship of last year, the Spartans, who last year won the championship of last year, the Spartans.

The Spartans, who last year won the championship of last year, the Spartans, who last year won the championship of last year, the Spartans.

The Spartans, who last year won the championship of last year, the Spartans, who last year won the championship of last year, the Spartans.

The Spartans, who last year won the championship of last year, the Spartans, who last year won the championship of last year, the Spartans.

The Spartans, who last year won the championship of last year, the Spartans, who last year won the championship of last year, the Spartans.

The Spartans, who last year won the championship of last year, the Spartans, who last year won the championship of last year, the Spartans.

The Spartans, who last year won the championship of last year, the Spartans, who last year won the championship of last year, the Spartans.

Sports COED CORNER

COED basketball, intramural play will get underway tonight, with competition continuing every Tuesday and Thursday until Feb. 14. Twenty-six teams have been divided into four brackets with eight teams playing every night.

Sororities have entered eight teams, dormitories six, and co-ops and coed organizations, 12.

Steve Owen, head coach of the New York grid Giants, was captain and tackle on the Giant team of 1927.

Safety MG fast!

SALES — PARTS — SERVICE

All Makes of Foreign Cars

SPEED EQUIPMENT

BROOKS ENGINEERING

5026 N. GRAND RIVER
LANSING, MICHIGAN

U.S. 16 by Airport Phone 5-8596

Mural Schedule

Thursday, Jan. 17
COURT NO. 1
COURT NO. 2
COURT NO. 3
COURT NO. 4
COURT NO. 5
COURT NO. 6
COURT NO. 7
COURT NO. 8
COURT NO. 9
COURT NO. 10
COURT NO. 11
COURT NO. 12

Billiard Entries Due

Entries for the Union Board billiard contest close Friday night, announced Max Fox, chairman. The contest will begin Wednesday.

PATRONIZE STATE NEWS ADVERTISERS

SLACK CLEARANCE

TO MAKE ROOM FOR SPRING MERCHANDISE WE ARE CLEARING OUR STOCK

9.95 THRU 11.50
NOW
\$8.00

\$14.95 VALUE
NOW
\$12.00

\$18.50 VALUE
NOW
\$14.00

21.50 THRU 27.50
NOW
\$18.00

— LOWER MAIN —

B. Kositchek and Bros.

STARTS TODAY!

Shepard's Pre-Inventory CLEARANCE SALE!

HUNDREDS OF PAIRS!

Here it is... The shoe sale you've been waiting for! Top-quality, "Close out" footwear at terrific reductions! Two pairs for the price of one in some groups! Come in and look 'em over... you'll be glad you did!

NOTE: This is not "special purchase" merchandise, but our regular stock, nationally-advertised footwear for men... women... children.

HUNDREDS OF VALUES!

Shearling Lined WOMEN'S BOOTS!

We have 23 pairs left of these popular warm-as-toast boots in black or brown combinations. Just right for the stormy days ahead!

\$4.88

\$8.95 values. NOW

WOMEN'S

Low Heel Sport and Dress Flats!

296 pairs of sport shoes and dress flats in this group... leather, non-slip and genuine crepe soles! Excellent color and pattern selection. A terrific "BUY"!

\$4.44

Values to \$8.95. NOW

MEN'S WHITE BUCKS!

This is a special close-out group of 51 pairs of the "tops" in campus footwear—White Bucks, by Leverenz! Most sizes.

\$7.77

NOW only

CHILDREN'S SHOES!

These are regular-stock, famous-brand shoes for active boys and girls by Child Life, Sandler and Co-Ree-Toes. Wonderful selection, wonderful values!

Sizes 8 1/2 to 12. Values to \$7.75. NOW \$3.33 and \$4.44. Sizes 12 1/2 to 3. Values to \$8.75. NOW \$3.88 and \$4.88.

Another Group of WOMEN'S

Low Heel Sport and Dress Flats!

214 pairs of suede and leather styles sport and dress by Sandler of Boston, Prima and Friendly. Real footwear bargains!

\$5.55

Values to \$9.95. NOW

MEN'S SHOES!

This is a close-out group of 142 pairs for dress, street, campus. Mostly Freeman styles. Broken sizes 6 1/2 to 12. A to D.

\$9.99

Values to \$14.95. NOW only

Women's JODPUR BOOTS!

Special! We have 17 pairs of women's brown leather jodpur boots for riding, etc. A grand "buy" if we have your size.

\$7.77

Regular \$16.95 value!

WOMEN'S HOSIERY!

Nylon hosiery by Globe... over 90 pairs, mostly 65 gauge. Broken lots, but good size and color selections!

69¢

Regular \$1.35 values. NOW only

BOYS' SHOES!

Never before a Shepard's value like this! Genuine Bondshire boys' shoes... styles "Just like Dad's"! Good size and style selection!

\$5.55

Regular 8.95 NOW

Across From MSC Campus

Shepard's SHOES

317-319 East Grand River Avenue
EAST LANSING

Open Tonight
Till 9:00
But come in early for best selection!

Sorry... No Refunds or Exchanges on Sale Merchandise!

'January Clearance SALE

NOW IN PROGRESS

Suits, Outercoats, Stormcoats,
Sport Coats, Slacks at
REDUCED PRICES

Colored Shirts

Were \$3.65 to \$5.00
Now \$2.89 to \$3.59

Sport Shirts

Were \$4.95 to \$18.75
Now \$3.89 to \$14.89

Sweaters

Were \$6.50 to \$19.50
Now \$4.89 to \$11.89

Jackets

Mouton collars, pile-lined waist length. Were \$27.50, now \$19.95
Surcoat length. Were \$34.95 to \$37.50.
NOW \$22.95

Ties

\$1.50, now \$1.19, 2 for \$2.35
\$2.00, now \$1.49, 2 for \$2.85
\$2.50, now \$1.89, 2 for \$3.55
\$3.50, now \$2.59, 2 for \$5.00

Special at East Lansing store ONLY. Odd lot white shirts \$2.19

Broken sizes

Convenient Charge Accounts, Layaways

HARD'S

LANSING AND EAST LANSING

Open until 9:00 Thursday

Hamilton

AMERICA'S FINE WATCH MARKS THE OCCASION

Jewelry

LANA... \$71.50
17 jewels, 14k natural or white gold case

MAN'S JEWELRY

Glamour Theater Bldg.
LANSING

CED Aims At Fourth Constitution

Sheets Explains Past Rejections

Another effort to reorganize the Committee to End Discrimination was started last night.

Meeting for the first time since October the committee named a group to rewrite the constitution which has been rejected three times by the Student Congress and the faculty committee on campus organization.

Nick Pagan, assistant counselor for men, and Gaylord Sheets, Student Government president participated in a question and answer period which climaxed the session.

Sheets listed an incorrect membership list as one reason for the constitution rejection. The list was "incorrect" by Student Government rules.

Both Pagan and Sheets said they believed the faculty turned down the constitution because they felt the committee would turn into a pressure group against the Student Government and also that it overlapped the duties of the Student Government.

Sheets said he did not believe that the CED was overlapping the Civil Liberties Committee of the Student Government.

About 40 students attended the meeting.

Coeds' Spring Scholarships Available Now

Undergraduate women who will need financial aid spring term may pick up applications for two \$100 scholarships at Mrs. Gomon's office beginning today.

The scholarships, given annually by Delta Delta Delta sorority, will be awarded the first of spring term on the basis of scholarship, citizenship and financial need. Norma Stoddard, scholarship chairman, said.

Any undergraduate women on campus are eligible to apply, she pointed out.

Complete directions for application are included with the blanks. To be eligible for the scholarships coeds must comply with all specifications.

Deadline for return of applications is Feb. 6 and judging will take place Feb. 15.

Judges include Mrs. Maurice Gomon, counselor for women; two MSC faculty members; and Miss Stoddard. After winners are chosen by the local committee the applications will be sent to the Tri Delta national office in Chicago for final approval.

Union Board Gets 175 Petitions

Union Board petitions total over 175 to date, according to James McCarthy, personnel chairman. Deadline for receiving the petitions is Jan. 31.

McCarthy, a Detroit senior, urged all interested students to apply for the 50 or 60 vacancies. Last year's petitions numbered between 400 and 500.

Smokers are tentatively scheduled for Feb. 12 to 14 and Feb. 19 to 21 inclusive from 7 to 9 each of those nights.

German Club Holds Meeting Tonight

The German Club will meet for the first time this term, tonight in the International Center at 7:30.

Miss Kathy Stenck, who has recently returned from a six-month visit to Austria, will show slides and talk to the group.

A business meeting to discuss plans for the International Festival in April will follow the slides. All German students are urged to attend.

'Y' Postpones Session

Tonight's meeting of the International group of Y.M.C.A. has been postponed until next Thursday.

Film Producer



The story of Mexican California will be shown in the Auditorium Saturday at 8 p.m. in the film "The Golden Land, The Seven Cities of Cibola." Produced by John D. Craig, the movie will show scenes of the Lower Californian Peninsula and the Gulf of California. Tickets for the film-lecture will be available at the door. Students will be admitted with their ID card.

Junior Dance Group to Start Instructions

Junior Orchestras, a new organization on the MSC campus, has been formed by Miss Ellen Moore, modern dance instructor, so students may learn more about modern dance.

Its first meeting will be held tonight at 7:30 p.m. in the dance studio on the second floor of Women's Gym.

Both men and women students are eligible to attend.

Miss Moore explained that the weekly meetings will consist of a vigorous physical workout to improve skills and experiment in dance composition.

Women are asked to bring leotards and men should be prepared to wear either bathing trunks or gym shorts. They will dance in their bare feet.

Miss Moore defined modern dance as a method of communicating ideas or feelings by rhythmic movements.

"These movements may have logical sequences or may be designed purely for the sake of pattern and aesthetic appearance," she added.

Legislative Experiment

(Continued from Page 1)

executive officer of each class, and chairmen of any Congressional committee the president may deem necessary.

The presidency remains, however, an office of prestige, rather than an office of great importance. There is the usual amount of leadership generally accorded the position. The president has the power of recommendation to the Congress.

This power was exercised last night by Gaylord Sheets when he appeared before the Congress with a mid-year report of accomplishments and several more recommendations for the term.

Obviously sincere, Sheets presented several ideas of merit, which the Congress may or may not act upon, as it sees fit.

Time will tell what power the executive's suggestions wield on the Congress.

TOMORROW: The judiciary, newest and probably most efficient branch of Student Government.

We Bring to You, Just in Time for the Cold Months Ahead, This "Special Purchase" Event.

The Most Sensational
"Buy" of the Season...

**STORM
COATS**
\$29.

If not for this "Special Purchase" Event.

These coats would sell for \$38.95...

Tailored to Green's high quality with

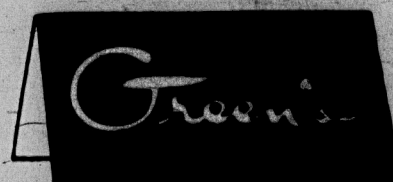
soft gathered backs, warm alpen linings.

Mouton dyed lamb collars, weather resistant...

Ideal shelter against cold winters on campus.

Town or Country... In all sizes in Navy,

Green and Slate grey.....



YOUR FAVORITE FASHION CENTER IN DOWNTOWN LANSING 228 SO. WASHINGTON

OPEN EVERY THURSDAY EVENING UNTIL NINE

Margo Walters

WINNER OF THE
1952 FASHION
ACADEMY AWARD

Margo Walters designs new
cottons for a new season
and year... using the
clever touch of detailing to
make smart fashion for so
tiny a price!

A. Check gingham coach-
man dress with saucer but-
tons and patent belt. Black,
brown, navy; sizes 12 to 20.

B. Solid pima cotton with
check gingham collar, bib,
cuffs and skirt inset. Navy,
brown, black; sizes 12 to 20.

C. Pima cotton, embroi-
dered at bodice and pockets.
Navy, chartreuse, green or
brown. Sizes 12 to 20.

D. Woven stripe broad-
cloth, with white pique and
portrait neckline. Navy or
brown. In sizes 12 to 20.



fashion-values in cotton!

Fresh and welcome as the spring sun... crisp new cottons with more clever styling and detailing, much finer fabric than their little price implies. These are the colorful cottons you'll wear indoors now, everywhere later when the sun is warm and bright. Part of our great collection of junior, misses and half-size cottons from our Casual Shop.

Jacobson's

East Lansing

**DANCING
in
LANSING
TONIGHT**

8:30 - 11:30 65c Stag

Music By
**CLARENCE SCHMIDT
LANSING YWCA**