

HOORAY!!
SENATE FINIS
A QUIET GENERAL

Michigan State News

MSC DAILY STUDENT PUBLICATION

WEATHER:
PARTLY CLOUDY;
LITTLE COOLER TODAY

EAST LANSING, MICHIGAN — THURSDAY, MAY 17, 1951

FIVE CENTS

No. 129

Bradley Stays Mum: Causes Hot Dispute Over Senate Power

Republicans Demand That General
Be Forced to Reveal Truman Talk

WASHINGTON—(AP)—The inquiry into Gen. Douglas
MacArthur's ouster exploded yesterday into a bitter wrangle
over the power to force Gen. Omar N. Bradley to tell what
was said at a meeting with President Truman last April 6.

The White House said it was not
firing the far east command
in his testimony.

The dispute showed how
the testimony on the Korean
war.

It brought angry talk that
the White House may be "pull-
ing an iron curtain down on
the testimony—and counter-
charges that the Republicans
may be "trying to sabotage" the
Asia policy inquiry because
they don't like the way the
testimony is going.

The senate armed services and
foreign relations committees
conducting the hearing will vote
today on whether to try to force
Bradley to reveal the White
House conversation. At the same
time, the House will vote on
whether Bradley will be expelled
from the senate.

Chairman Russell (D-Calif.)
said the inquiry chairman said
the question will be "Whether or
not a congressional committee has
the power to compel an adviser of
the President of the United States
to disclose the details of a conver-
sation had with the president on
a confidential basis."

This issue arose yesterday
when Senator Wiley (R-Wis.)
asked Bradley, chairman of the
joint chiefs of staff, to tell what
he saw of the meeting.

Bradley refused to answer.
The program continues
with a concert by
George Copeland.

The program continues
with a concert by
George Copeland.

The program continues
with a concert by
George Copeland.

The program continues
with a concert by
George Copeland.

The program continues
with a concert by
George Copeland.

The program continues
with a concert by
George Copeland.

The program continues
with a concert by
George Copeland.

The program continues
with a concert by
George Copeland.

The program continues
with a concert by
George Copeland.

The program continues
with a concert by
George Copeland.

The program continues
with a concert by
George Copeland.

The program continues
with a concert by
George Copeland.

The program continues
with a concert by
George Copeland.

The program continues
with a concert by
George Copeland.

The program continues
with a concert by
George Copeland.

The program continues
with a concert by
George Copeland.

The program continues
with a concert by
George Copeland.

The program continues
with a concert by
George Copeland.

The program continues
with a concert by
George Copeland.

Not Today

The State News yesterday
urged students to attend the
symposium on "The American
Way" which Dr. Ralph Bunche
will present in the auditorium.
Further, it was suggested
that students would find it
worth while to cut class to at-
tend. There is only one hitch:
It was stated that Doctor
Bunche would appear today at
10 a.m. This is incorrect.
The symposium will be held
Tuesday, May 22, at 10 a.m.
Don't cut your class today,
save that valuable absence for
next Tuesday.

VA to Allow Recalled Vets More Study

GI's to Complete
Course after Duty

Veterans now in active military
service who are attending school
under the GI bill will be able to
resume their courses after the July
25, 1951 training cut-off date if
they are required to interrupt
their studies because of military
duties.

They will be allowed to con-
tinue training within a reasonable
period after their release from ac-
tive duty—even though they do
not get out until after the cut-off
date. Veterans administration said
today.

In fact, VA added, when they do
re-enter GI bill training, they may
skip up to the part-time training
taken while in uniform to full-
time courses.

Veterans whose training is in-
terrupted by military service must
meet three requirements if they
expect to return to training after
the cut-off date, VA said.

1. Conduct and progress in their
GI bill course must have been
satisfactory.

2. The period of training which
may be obtained after they get
out of uniform will be limited to
the remaining GI bill entitlement.

3. Also, their course may not ex-
tend beyond the final deadline of
the GI bill program on July 25,
1956.

Under the law the July 25, 1951
cut-off date applies to World War
I veterans discharged before July
25, 1947.

Students can test their driving
skills today.

A new device called a drive-
ometer will be displayed in the
Union today through Monday.
Students may sit behind the wheel
for one minute and get a record
of their driving ability.

The driveometer consists of a
revolving wheel, brake and accel-
erator pedals and a television-like
screen.

On the screen will be projected
driving conditions similar to
those seen through the windshield
of a car. All scenes end in emer-
gency situations requiring swift
driver reactions.

Anyone may take the test
whether or not he has a license.
No license will be revoked due
to poor test scores.

Crash-testing is not advocated.

Captain in Action



Police Search for Vandals; Damages \$900

Property Smashed
at Kellogg Center

Vandals did an estimated \$900
damage to construction equipment
on campus and to cars in an East
Lansing used car lot early yester-
day morning, college police said.

Both college and East Lansing
police were investigating the van-
dalism which occurred at the
new Kellogg center, under con-
struction on Harrison road, and
at the Sellhorn used car lot of
Grand River avenue and Harrison
road.

Police said a pick and sledge
hammer were used to smash a
bulldozer used for landscaping at
the Kellogg center. Four trailer
tires and seven wheelbarrow tires
were destroyed and tools from a
toolbox were scattered in the area.

Damage amounted to \$300.
At the used car lot, vandals
smashed windshields, windows
and hoods of several cars, creat-
ing a \$600 damage.

College police arrested three
MSC students yesterday for an-
other wave of vandalism at about
the same time yesterday morning.
Police said they believed there
was no connection between this
and the damage done at the Kel-
logg center and the used car lot.

The three students were
charged with disfiguring the Spar-
tan statue, removing street signs
from near the Women's gymnas-
ium and pushing a car crosswise
onto Grand River avenue.

Names of the three students
were to be turned over to Dean
of Students Tom King today.

Bus Ad Students to Hear Akers

Forest H. Akers, member of the
State Board of Agriculture and
retired vice-president of the
Dodge Division of the Chrysler
Corporation, will speak to busi-
ness administration students this
evening.

His talk on "The College Gradu-
ate in the Modern Business
World," will be given at 7:30 p.m.
in the music auditorium.

"It is of the greatest impor-
tance that in 1952 and 1953 MSC
retain its present enrollment if
it is to maintain itself as an
outstanding college."

"If we can persuade more able
students to come here we can
keep developing at our present
rate," he said. "This is an era in
which the Student congress can
really help."

Lieutenant Governor Vandenburg, previously scheduled to
speak at the banquet, was unable
to attend.

Col. A. D. Howell, deputy director
of Michigan office of civil de-
fense will be main speaker at a
joint meeting of the Michigan sec-
tion and student chapter of the
American Society of Civil Engi-
neers Thursday at 6:30 in Parlor C
Union.

Colonel Arnold will show the
motion pictures "Survival Under
Atomic Attack" and "Tale of Two
Cities."

Michigan Normal third baseman, Marv Strell puts the tag on
Spartan Capt. Vince Magi on an attempted steal of third base.
The play came in the eighth inning of yesterday's game that
MSC won 3-1. Magi reached first on a single on the ground into
right, his second hit of the game. He went to second while Cholek
was grounding out to second. Darrell Lindley was the batter
when Magi broke for third but was retired on a perfect throw by
Huron catcher John Sax. Magi's first hit was a triple in the
fifth inning that extended a consecutive-game hitting streak to
14. He started the streak in the fourth game of the Spartans'
spring training tour through the south.

CHALLENGE EXTENDED

Greater Student Leadership Asked at Congress Dinner

The incoming Student congress will have every opportu-
nity to make of itself what it wishes, President Hannah said
last night.

He spoke at the Student government banquet which was
attended by incoming and out-
going student government offi-
cers. The mayors of Lansing
and East Lansing were other
guest speakers.

"If the incoming Student gov-
ernment isn't more effective than
others before it, the fault will lie
with the congress itself," Dr. Han-
nah said.

The new constitution provided
a framework for student gov-
ernment to accomplish its goals, he
declared.

Dr. Hannah challenged the in-
coming government to accept
leadership of the student
body. "You have it in your
hands to determine whether
the students concentrate on so-
cial or athletic activities or fo-
cus themselves in making
maximum use of the opportuni-
ties that are theirs."

"When men and women reach
the stage when they enroll in a
university they should turn their
attention to something more im-
portant than next Friday's party.
That's why it's important that
those among us who are willing
to do a little thinking should de-
vote ourselves to something more
valuable."

"In regard to appropriations we
are being treated less well than
other institutions in the state,"
Dr. Hannah said.

"It is of the greatest impor-
tance that in 1952 and 1953 MSC
retain its present enrollment if
it is to maintain itself as an
outstanding college."

"If we can persuade more able
students to come here we can
keep developing at our present
rate," he said. "This is an era in
which the Student congress can
really help."

Lieutenant Governor Vandenburg, previously scheduled to
speak at the banquet, was unable
to attend.

Col. A. D. Howell, deputy director
of Michigan office of civil de-
fense will be main speaker at a
joint meeting of the Michigan sec-
tion and student chapter of the
American Society of Civil Engi-
neers Thursday at 6:30 in Parlor C
Union.

Colonel Arnold will show the
motion pictures "Survival Under
Atomic Attack" and "Tale of Two
Cities."

State Nine Tops Hurons in 3-1 Pitching Battle

Gus Carlson Goes Distance;
Limits Normal to Six Hits

By STAN KURZMAN

Gus Carlson became the second Michigan State pitcher to
go the route this season as he hurled the Spartans to a
3-1 victory yesterday over Michigan Normal at Old College
field.

Carlson gave up but six hits, shutting out the Hurons
until the ninth when a single
and double brought home
the lone Michigan Normal
ally.

Michigan Normal pitcher, Art
Sheridan, also went the route. He
was tagged for eight hits includ-
ing two triples and a double.
Outfielder Darrell Lindley
continued his torrid hitting with
three hits in four trips to the
plate.

The Spartans opened the scor-
ing in the fourth on a single by
Lindley and a 390-foot three-
bagger by Dick Blanchard.
They added their final two
counters in the next inning on a
Texas League single by Dick Mo-
sey, a tremendous triple by Cap-
tain Vince Magi and Bob Cholek's sin-
gle.

Magi's triple extended his hit-
ting streak to 14 consecutive
games.
Tom Lawson has been the
only other State hurler to go
the distance. He went all the
way in beating South Carolina,
4-3, on the Spartans' southern
training tour.

Carlson fanned five and walked
three as he allowed but two
Michigan Normal runners to
reach third base.
In the fourth the Hurons' Jim
Snyder tripled to right-center but
was left stranded when Carlson
forced Stan Tomczyk to hit
Blanchard who threw him out.

It wasn't until their ninth in-
ning score that Normal got another
runner as far as third.
Michigan State wasted its first
scoring chance in the third when
See BASEBALL, Page 5

The statement also brought
out a comparison between the
appropriation recommended for
MSC and other state supported
schools.
It went on, "In our eyes there
is the matter of fair and equitable
treatment for comparable insti-
tutions. The teachers colleges and
the College of Mines have all been
allowed sufficient funds to take
care of increased wages and salar-
ies, with some allowance for
increasing costs of supplies and
materials."

The statement concluded, "On
the basis of figures recommend-
ed by the budget office and the
governor, the state appropria-
tion on a per-student basis for
the University of Michigan
would exceed the per-student
appropriation for Michigan
State College by about \$113,
which is approximately double
the previous margin of differ-
ence."

Copies of the bulletin are avail-
able for anyone interested in
reading it.

Applications
Open for Posts

The United States civil service
commission has announced a psy-
chologist examination for filling
positions in various federal agen-
cies in Washington D. C. and in
most states throughout the coun-
try. The beginning salaries are
\$3,825 and \$4,600 a year.

To qualify, the applicants must
pass a written test and must
have had appropriate education or
experience or a combination of
both.

Further information and appli-
cation forms may be obtained
from the commission's local sec-
retary, George A. Monroe, in the
Federal building, Lansing.

Commencement
Ticket Distribution
Continues Today

Ticket distribution for com-
mencement exercises in Jenison
fieldhouse will continue today on
the second floor of the Union
from 8 to 5.

The exercises will be held in the
fieldhouse only in case of rain.
Two tickets will be available
for each member of the class of
1951. This includes candidates
for undergraduate degrees in fall,
winter, spring and summer terms,
and graduate students for all but
summer quarters.

ID cards are required for the
tickets.
If any tickets are left they will
be distributed, one to a senior, at
the Records office, 2 p.m. Friday.

Senator McCarthy (R-Wis.)
charged last night the army is "run
by politics" and "political gen-
erals."

WASHINGTON—(AP)—The wage line simply cannot be held if
living costs keep soaring, Secretary of Labor Tobin told congress
yesterday.

WASHINGTON—(AP)—Dean Acheson, target of hot fire from critics
of the Truman administration, declared yesterday that he "enlisted
for the duration" and intends to remain as secretary of state as long
as the President wants him.

Michigan State News

Entered as second-class matter under acts of March 1879 at the post-office at East Lansing, Mich. Office located on third floor of Union Bldg. Member of the United States Postal Service and the Associated College Presses.

MANAGER Steve Brundage
EDITOR Phil Woodson
ADVERTISING DIRECTOR Judy Gardner
CIRCULATION MANAGER Bob Kottus

Congress Forecast

The returning veteran players to a new season of athletic play make all the difference in the world in the pre-season forecasts. If few veterans are coming back, the predictions are pessimistic. On the other hand, if many seasoned players return, the outlook is bright.

This theory might be applied to the MSC Student congress.

Last fall, only four veteran Student councilmen (now congressmen) were returning as incumbents. Among them were two council officers, Pres. Bob Rombouts and Jack Sweet, the vice-president. Both expressed surprise that so few experienced council members were returning.

The council record for 1950-51 year is pretty generally known. Passage of a new student government constitution and revision of the legislative process were the outstanding achievements.

But many an athletic team goes through a mediocre season, and goes undefeated the following year because the poor season served to prepare the participants for championship play.

This could apply to the council.

Almost one-third of the 1950-51 Student council has returned.

These people have had a year of ups and downs in which to learn the facts of student government. The new setup will require a breaking-in period, but four meetings have been set aside for this purpose.

The first was last night. At the fourth, the new congress officers will be elected. Let's sum up the pre-season conditions and make a forecast for the future.

With over 30 percent of this year's council returning, congress leaders in the coming year should have some veteran assistance. Of the newcomers to the congress, several have had experience in other student governmental positions such as YMCA, executive agencies, etc.

The new congress has a new governmental pattern, arranged for increased responsibility and more efficiency in getting things done. It is far from perfect, but veterans like Gary Sheets and Bob Bolo have had much to do with drawing it up, and can use this knowledge to help the congress off to a good start.

By meeting every week, instead of bi-weekly as in the past, the congress has a good chance to accomplish more. It will not be troubled with executive and judicial duties which will be in separate hands.

It could be a banner year in MSC student government. It's up to congress now, the fans who support it, and the faculty and administration to play out the season to the best possible conclusion.

The Fine Arts Festival

Ten thousand Michigan people are finding out that Michigan State has a contribution to make in the field of fine arts.

This is the second day of the first annual fine arts festival. It is an expansion of the traditional festival sponsored by the music department every year.

About 10,000 people are expected to come to the festival. They will hear the MSC carillons, the a cappella choir, a chamber music concert, the symphony orchestra and chorals, a chamber music concert, and a concert from the works of Debussy.

Besides this, they will see the term play and exhibits sponsored by the art department. In all, it will be a comprehensive sample of the things MSC has done in the field of fine arts.

The festival is a concrete example of MSC's rise from an agricultural school to a bona fide university.

Patronize State News Advertisers

Crossword-Puzzle

- ACROSS**
1. Michigan's capital
 2. The state bird
 3. The state flower
 4. The state tree
 5. The state fish
 6. The state vegetable
 7. The state fruit
 8. The state mineral
 9. The state rock
 10. The state gem
 11. The state shell
 12. The state insect
 13. The state mammal
 14. The state bird
 15. The state fish
 16. The state vegetable
 17. The state fruit
 18. The state mineral
 19. The state rock
 20. The state gem
 21. The state shell
 22. The state insect
 23. The state mammal
 24. The state bird
 25. The state fish
 26. The state vegetable
 27. The state fruit
 28. The state mineral
 29. The state rock
 30. The state gem
 31. The state shell
 32. The state insect
 33. The state mammal
 34. The state bird
 35. The state fish
 36. The state vegetable
 37. The state fruit
 38. The state mineral
 39. The state rock
 40. The state gem
 41. The state shell
 42. The state insect
 43. The state mammal
 44. The state bird
 45. The state fish
 46. The state vegetable
 47. The state fruit
 48. The state mineral
 49. The state rock
 50. The state gem
 51. The state shell
 52. The state insect
 53. The state mammal
 54. The state bird
 55. The state fish
 56. The state vegetable
 57. The state fruit
 58. The state mineral
 59. The state rock
 60. The state gem
 61. The state shell
 62. The state insect
 63. The state mammal
 64. The state bird
 65. The state fish
 66. The state vegetable
 67. The state fruit
 68. The state mineral
 69. The state rock
 70. The state gem
 71. The state shell
 72. The state insect
 73. The state mammal
 74. The state bird
 75. The state fish
 76. The state vegetable
 77. The state fruit
 78. The state mineral
 79. The state rock
 80. The state gem
 81. The state shell
 82. The state insect
 83. The state mammal
 84. The state bird
 85. The state fish
 86. The state vegetable
 87. The state fruit
 88. The state mineral
 89. The state rock
 90. The state gem
 91. The state shell
 92. The state insect
 93. The state mammal
 94. The state bird
 95. The state fish
 96. The state vegetable
 97. The state fruit
 98. The state mineral
 99. The state rock
 100. The state gem
 101. The state shell
 102. The state insect
 103. The state mammal
 104. The state bird
 105. The state fish
 106. The state vegetable
 107. The state fruit
 108. The state mineral
 109. The state rock
 110. The state gem
 111. The state shell
 112. The state insect
 113. The state mammal
 114. The state bird
 115. The state fish
 116. The state vegetable
 117. The state fruit
 118. The state mineral
 119. The state rock
 120. The state gem
 121. The state shell
 122. The state insect
 123. The state mammal
 124. The state bird
 125. The state fish
 126. The state vegetable
 127. The state fruit
 128. The state mineral
 129. The state rock
 130. The state gem
 131. The state shell
 132. The state insect
 133. The state mammal
 134. The state bird
 135. The state fish
 136. The state vegetable
 137. The state fruit
 138. The state mineral
 139. The state rock
 140. The state gem
 141. The state shell
 142. The state insect
 143. The state mammal
 144. The state bird
 145. The state fish
 146. The state vegetable
 147. The state fruit
 148. The state mineral
 149. The state rock
 150. The state gem
 151. The state shell
 152. The state insect
 153. The state mammal
 154. The state bird
 155. The state fish
 156. The state vegetable
 157. The state fruit
 158. The state mineral
 159. The state rock
 160. The state gem
 161. The state shell
 162. The state insect
 163. The state mammal
 164. The state bird
 165. The state fish
 166. The state vegetable
 167. The state fruit
 168. The state mineral
 169. The state rock
 170. The state gem
 171. The state shell
 172. The state insect
 173. The state mammal
 174. The state bird
 175. The state fish
 176. The state vegetable
 177. The state fruit
 178. The state mineral
 179. The state rock
 180. The state gem
 181. The state shell
 182. The state insect
 183. The state mammal
 184. The state bird
 185. The state fish
 186. The state vegetable
 187. The state fruit
 188. The state mineral
 189. The state rock
 190. The state gem
 191. The state shell
 192. The state insect
 193. The state mammal
 194. The state bird
 195. The state fish
 196. The state vegetable
 197. The state fruit
 198. The state mineral
 199. The state rock
 200. The state gem
 201. The state shell
 202. The state insect
 203. The state mammal
 204. The state bird
 205. The state fish
 206. The state vegetable
 207. The state fruit
 208. The state mineral
 209. The state rock
 210. The state gem
 211. The state shell
 212. The state insect
 213. The state mammal
 214. The state bird
 215. The state fish
 216. The state vegetable
 217. The state fruit
 218. The state mineral
 219. The state rock
 220. The state gem
 221. The state shell
 222. The state insect
 223. The state mammal
 224. The state bird
 225. The state fish
 226. The state vegetable
 227. The state fruit
 228. The state mineral
 229. The state rock
 230. The state gem
 231. The state shell
 232. The state insect
 233. The state mammal
 234. The state bird
 235. The state fish
 236. The state vegetable
 237. The state fruit
 238. The state mineral
 239. The state rock
 240. The state gem
 241. The state shell
 242. The state insect
 243. The state mammal
 244. The state bird
 245. The state fish
 246. The state vegetable
 247. The state fruit
 248. The state mineral
 249. The state rock
 250. The state gem
 251. The state shell
 252. The state insect
 253. The state mammal
 254. The state bird
 255. The state fish
 256. The state vegetable
 257. The state fruit
 258. The state mineral
 259. The state rock
 260. The state gem
 261. The state shell
 262. The state insect
 263. The state mammal
 264. The state bird
 265. The state fish
 266. The state vegetable
 267. The state fruit
 268. The state mineral
 269. The state rock
 270. The state gem
 271. The state shell
 272. The state insect
 273. The state mammal
 274. The state bird
 275. The state fish
 276. The state vegetable
 277. The state fruit
 278. The state mineral
 279. The state rock
 280. The state gem
 281. The state shell
 282. The state insect
 283. The state mammal
 284. The state bird
 285. The state fish
 286. The state vegetable
 287. The state fruit
 288. The state mineral
 289. The state rock
 290. The state gem
 291. The state shell
 292. The state insect
 293. The state mammal
 294. The state bird
 295. The state fish
 296. The state vegetable
 297. The state fruit
 298. The state mineral
 299. The state rock
 300. The state gem
 301. The state shell
 302. The state insect
 303. The state mammal
 304. The state bird
 305. The state fish
 306. The state vegetable
 307. The state fruit
 308. The state mineral
 309. The state rock
 310. The state gem
 311. The state shell
 312. The state insect
 313. The state mammal
 314. The state bird
 315. The state fish
 316. The state vegetable
 317. The state fruit
 318. The state mineral
 319. The state rock
 320. The state gem
 321. The state shell
 322. The state insect
 323. The state mammal
 324. The state bird
 325. The state fish
 326. The state vegetable
 327. The state fruit
 328. The state mineral
 329. The state rock
 330. The state gem
 331. The state shell
 332. The state insect
 333. The state mammal
 334. The state bird
 335. The state fish
 336. The state vegetable
 337. The state fruit
 338. The state mineral
 339. The state rock
 340. The state gem
 341. The state shell
 342. The state insect
 343. The state mammal
 344. The state bird
 345. The state fish
 346. The state vegetable
 347. The state fruit
 348. The state mineral
 349. The state rock
 350. The state gem
 351. The state shell
 352. The state insect
 353. The state mammal
 354. The state bird
 355. The state fish
 356. The state vegetable
 357. The state fruit
 358. The state mineral
 359. The state rock
 360. The state gem
 361. The state shell
 362. The state insect
 363. The state mammal
 364. The state bird
 365. The state fish
 366. The state vegetable
 367. The state fruit
 368. The state mineral
 369. The state rock
 370. The state gem
 371. The state shell
 372. The state insect
 373. The state mammal
 374. The state bird
 375. The state fish
 376. The state vegetable
 377. The state fruit
 378. The state mineral
 379. The state rock
 380. The state gem
 381. The state shell
 382. The state insect
 383. The state mammal
 384. The state bird
 385. The state fish
 386. The state vegetable
 387. The state fruit
 388. The state mineral
 389. The state rock
 390. The state gem
 391. The state shell
 392. The state insect
 393. The state mammal
 394. The state bird
 395. The state fish
 396. The state vegetable
 397. The state fruit
 398. The state mineral
 399. The state rock
 400. The state gem
 401. The state shell
 402. The state insect
 403. The state mammal
 404. The state bird
 405. The state fish
 406. The state vegetable
 407. The state fruit
 408. The state mineral
 409. The state rock
 410. The state gem
 411. The state shell
 412. The state insect
 413. The state mammal
 414. The state bird
 415. The state fish
 416. The state vegetable
 417. The state fruit
 418. The state mineral
 419. The state rock
 420. The state gem
 421. The state shell
 422. The state insect
 423. The state mammal
 424. The state bird
 425. The state fish
 426. The state vegetable
 427. The state fruit
 428. The state mineral
 429. The state rock
 430. The state gem
 431. The state shell
 432. The state insect
 433. The state mammal
 434. The state bird
 435. The state fish
 436. The state vegetable
 437. The state fruit
 438. The state mineral
 439. The state rock
 440. The state gem
 441. The state shell
 442. The state insect
 443. The state mammal
 444. The state bird
 445. The state fish
 446. The state vegetable
 447. The state fruit
 448. The state mineral
 449. The state rock
 450. The state gem
 451. The state shell
 452. The state insect
 453. The state mammal
 454. The state bird
 455. The state fish
 456. The state vegetable
 457. The state fruit
 458. The state mineral
 459. The state rock
 460. The state gem
 461. The state shell
 462. The state insect
 463. The state mammal
 464. The state bird
 465. The state fish
 466. The state vegetable
 467. The state fruit
 468. The state mineral
 469. The state rock
 470. The state gem
 471. The state shell
 472. The state insect
 473. The state mammal
 474. The state bird
 475. The state fish
 476. The state vegetable
 477. The state fruit
 478. The state mineral
 479. The state rock
 480. The state gem
 481. The state shell
 482. The state insect
 483. The state mammal
 484. The state bird
 485. The state fish
 486. The state vegetable
 487. The state fruit
 488. The state mineral
 489. The state rock
 490. The state gem
 491. The state shell
 492. The state insect
 493. The state mammal
 494. The state bird
 495. The state fish
 496. The state vegetable
 497. The state fruit
 498. The state mineral
 499. The state rock
 500. The state gem
 501. The state shell
 502. The state insect
 503. The state mammal
 504. The state bird
 505. The state fish
 506. The state vegetable
 507. The state fruit
 508. The state mineral
 509. The state rock
 510. The state gem
 511. The state shell
 512. The state insect
 513. The state mammal
 514. The state bird
 515. The state fish
 516. The state vegetable
 517. The state fruit
 518. The state mineral
 519. The state rock
 520. The state gem
 521. The state shell
 522. The state insect
 523. The state mammal
 524. The state bird
 525. The state fish
 526. The state vegetable
 527. The state fruit
 528. The state mineral
 529. The state rock
 530. The state gem
 531. The state shell
 532. The state insect
 533. The state mammal
 534. The state bird
 535. The state fish
 536. The state vegetable
 537. The state fruit
 538. The state mineral
 539. The state rock
 540. The state gem
 541. The state shell
 542. The state insect
 543. The state mammal
 544. The state bird
 545. The state fish
 546. The state vegetable
 547. The state fruit
 548. The state mineral
 549. The state rock
 550. The state gem
 551. The state shell
 552. The state insect
 553. The state mammal
 554. The state bird
 555. The state fish
 556. The state vegetable
 557. The state fruit
 558. The state mineral
 559. The state rock
 560. The state gem
 561. The state shell
 562. The state insect
 563. The state mammal
 564. The state bird
 565. The state fish
 566. The state vegetable
 567. The state fruit
 568. The state mineral
 569. The state rock
 570. The state gem
 571. The state shell
 572. The state insect
 573. The state mammal
 574. The state bird
 575. The state fish
 576. The state vegetable
 577. The state fruit
 578. The state mineral
 579. The state rock
 580. The state gem
 581. The state shell
 582. The state insect
 583. The state mammal
 584. The state bird
 585. The state fish
 586. The state vegetable
 587. The state fruit
 588. The state mineral
 589. The state rock
 590. The state gem
 591. The state shell
 592. The state insect
 593. The state mammal
 594. The state bird
 595. The state fish
 596. The state vegetable
 597. The state fruit
 598. The state mineral
 599. The state rock
 600. The state gem
 601. The state shell
 602. The state insect
 603. The state mammal
 604. The state bird
 605. The state fish
 606. The state vegetable
 607. The state fruit
 608. The state mineral
 609. The state rock
 610. The state gem
 611. The state shell
 612. The state insect
 613. The state mammal
 614. The state bird
 615. The state fish
 616. The state vegetable
 617. The state fruit
 618. The state mineral
 619. The state rock
 620. The state gem
 621. The state shell
 622. The state insect
 623. The state mammal
 624. The state bird
 625. The state fish
 626. The state vegetable
 627. The state fruit
 628. The state mineral
 629. The state rock
 630. The state gem
 631. The state shell
 632. The state insect
 633. The state mammal
 634. The state bird
 635. The state fish
 636. The state vegetable
 637. The state fruit
 638. The state mineral
 639. The state rock
 640. The state gem
 641. The state shell
 642. The state insect
 643. The state mammal
 644. The state bird
 645. The state fish
 646. The state vegetable
 647. The state fruit
 648. The state mineral
 649. The state rock
 650. The state gem
 651. The state shell
 652. The state insect
 653. The state mammal
 654. The state bird
 655. The state fish
 656. The state vegetable
 657. The state fruit
 658. The state mineral
 659. The state rock
 660. The state gem
 661. The state shell
 662. The state insect
 663. The state mammal
 664. The state bird
 665. The state fish
 666. The state vegetable
 667. The state fruit
 668. The state mineral
 669. The state rock
 670. The state gem
 671. The state shell
 672. The state insect
 673. The state mammal
 674. The state bird
 675. The state fish
 676. The state vegetable
 677. The state fruit
 678. The state mineral
 679. The state rock
 680. The state gem
 681. The state shell
 682. The state insect
 683. The state mammal
 684. The state bird
 685. The state fish
 686. The state vegetable
 687. The state fruit
 688. The state mineral
 689. The state rock
 690. The state gem
 691. The state shell
 692. The state insect
 693. The state mammal
 694. The state bird
 695. The state fish
 696. The state vegetable
 697. The state fruit
 698. The state mineral
 699. The state rock
 700. The state gem
 701. The state shell
 702. The state insect
 703. The state mammal
 704. The state bird
 705. The state fish
 706. The state vegetable
 707. The state fruit
 708. The state mineral
 709. The state rock
 710. The state gem
 711. The state shell
 712. The state insect
 713. The state mammal
 714. The state bird
 715. The state fish
 716. The state vegetable
 717. The state fruit
 718. The state mineral
 719. The state rock
 720. The state gem
 721. The state shell
 722. The state insect
 723. The state mammal
 724. The state bird
 725. The state fish
 726. The state vegetable
 727. The state fruit
 728. The state mineral
 729. The state rock
 730. The state gem
 731. The state shell
 732. The state insect
 733. The state mammal
 734. The state bird
 735. The state fish
 736. The state vegetable
 737. The state fruit
 738. The state mineral
 739. The state rock
 740. The state gem
 741. The state shell
 742. The state insect
 743. The state mammal
 744. The state bird
 745. The state fish
 746. The state vegetable
 747. The state fruit
 748. The state mineral
 749. The state rock
 750. The state gem
 751. The state shell
 752. The state insect
 753. The state mammal
 754. The state bird
 755. The state fish
 756. The state vegetable
 757. The state fruit
 758. The state mineral
 759. The state rock
 760. The state gem
 761. The state shell
 762. The state insect
 763. The state mammal
 764. The state bird
 765. The state fish
 766. The state vegetable
 767. The state fruit
 768. The state mineral
 769. The state rock
 770. The state gem
 771. The state shell
 772. The state insect
 773. The state mammal
 774. The state bird
 775. The state fish
 776. The state vegetable
 777. The state fruit
 778. The state mineral
 779. The state rock
 780. The state gem
 781. The state shell
 782. The state insect
 783. The state mammal
 784. The state bird
 785. The state fish
 786. The state vegetable
 787. The state fruit
 788. The state mineral
 789. The state rock
 790. The state gem
 791. The state shell
 792. The state insect
 793. The state mammal
 794. The state bird
 795. The state fish
 796. The state vegetable
 797. The state fruit
 798. The state mineral
 799. The state rock
 800. The state gem
 801. The state shell
 802. The state insect
 803. The state mammal
 804. The state bird
 805. The state fish
 806. The state vegetable
 807. The state fruit
 808. The state mineral
 809. The state rock
 810. The state gem
 811. The state shell
 812. The state insect
 813. The state mammal
 814. The state bird
 815. The state fish
 816. The state vegetable
 817. The state fruit
 818. The state mineral
 819. The state rock

Publication Staffs Slate Banquet

Skills to Depict Problems College Journalists

By SUE RYAN
More than 275 members of the staffs of various campus publications will be honored at the annual publication banquet tonight at 6:30 in the Union ballroom.

Wells Claims Only Male

Prothy Dix

ROSEMARY CORCORAN
Do you think it would be the man-about-town with 250 women? R. Blackman, effective instructor, can tell you. He is the only woman's residence that has one.

Blackman's unique position when Wells was considered a man's to his secretary and his wife housemother.

Blackman admitted he resented being kidded from the professors about living in the house. "I like it," he said, "I like the idea of a housefather. It's the dorm seem more like a home to me. Judy at Farmington freshman, and up her thoughts on the subject. 'The best thing Wells hall is Dadd's smile.' Blackman came to MSC two years ago. Previously Dr. Blackman taught at Suffolk and Babson institute, both in Massachusetts.

Slates Party
Sweep and Shine party held in College house by the Student Foundation Friday at 3:30 p.m. for the purpose of a spring house cleaning.

Guests will include President and Mrs. John A. Hannah, Prof. and Mrs. A. A. Applegate, of the journalism department; Dean of Students and Mrs. Tom King; Mr. and Mrs. Philip J. May, college committee; Mr. and Mrs. William McElroy, director of student publications; and Mr. and Mrs. James M. Demmon, administrative assistant to the president.

To the Well Wolverine
Jim Brown, editor of the year's Wolverine, will move the first 1951 copy of the yearbook.

Skills will be presented to the State News, Spartan and Wolverine, lasting from five to seven minutes.

State News will present a take-off of a typical day and changes in the news office. Spartan staff members will present a scene depicting the problems of trying to secure a staff. Wolverine will present a parody of people applying for a job on the yearbook.

Hannah to Award
President Hannah will award a symbolic living cup to the winner of the skills.

Staffs of the various publications for next year will be made known and awards to this year's editors will be presented.

New officers of Alpha Delta Sigma, national advertising fraternity, are: President, Donald Smith, Detroit; freshman vice-president, John Gage, Plymouth; sophomore secretary, Ford Slater, Grosse Pointe; and treasurer, Roger Sherb, Grosse Pointe.

Recently elected Alpha Chi Sigma officers are: President, Albert Caputo, Chicago; junior vice-president, Frederick Johns, Palmyra, N.Y.; sophomore second vice-president, LaVern McElroy, Lansing; and secretary, Charles Wojcik, Lowell, Mass.

Recently elected Gamma Phi Kappa, national physical education, health and recreation, honorary are: President, Barbara Busch, Lexington; junior vice-president, Barbara Yeoman, Gaylord; sophomore secretary, Janet Fox, Dearborn; and treasurer, Joan Von Dettie, Saginaw.

New Sorority House



Zeta Tau Alphas expect to move into their new modified French provincial style house next fall. Located on the southwest corner of M.A.C. avenue at Burcham drive, the house will accommodate 38 coeds. Construction was begun three weeks ago.

CONSTRUCTION STARTED

Zeta Tau Alphas Plan to Move into New House Fall Term

Next fall Zeta Tau Alpha sorority expects to move into its new \$104,000 modified French provincial style house, on which construction began three weeks ago.

The house, which will be located on the southwest corner of M.A.C. avenue and Burcham drive, will accommodate 38 coeds, a housemother, a cook, and other help.

It will be a three story structure of buff colored brick. Ten large study rooms will be located on the second floor with two dormers on the third floor. Located on the first floor will be the living room, date rooms, library, and housemother's quarters.

The dining room, chapter room, kitchen, cooks quarters, and laundry room will be located in the basement. The house is being constructed by Foster-Schermhorn-Foster. The architects are Manson and Carver.

Officers recently elected by Zeta Tau Alpha are: President, Susan Krum, Lowell; sophomore vice-president, Virginia Johnson, Detroit; secretary, Carolyn Johnson, Grosse Pointe; and treasurer, Maryalve Smith, Detroit.

Recently elected Gamma Phi Kappa officers include: President, Ellen Hicks, Lincoln Park; sophomore vice-president, Jan Besserman, Hillsdale; freshman secretary, Mary Norton, Traverse City; sophomore secretary, Constance Thompson, Pontiac; and treasurer, Joan Von Dettie, Saginaw.

PLEASURE CRUISE Sailors to Vote on Lower Fees for Members

The sailing club will meet tonight to vote on a proposal to offer a lower sailing fee to students who wish to sail during the remaining weeks of school. Theodore Del Solar, commodore announced yesterday.

The organization has anchored at home port and shoved off on a team racing and pleasure sailing schedule for the rest of the term. Team racing is scheduled May 20 at Lake Lansing. The club will split into three teams and compete for honor points.

The pleasure schedule comes in the wake of three regattas. MSC Hosts Sailors
On April 28-29 the sailors played host to five schools at the MSC invitational regatta. Standings for the weekend were: Ohio State 58, Depaw 42, MSC 41, Wayne 40, Bowling Green 36 and Ohio Wesleyan 36. Fifty visiting tars contested in the regatta.

MSC skippers sailing in the race were: Carol Stewart, Grosse Pointe sophomore; Robert Jewell, Northfield, Ill., sophomore; Mack Goodwin, Grand Rapids junior, and Charles Thorne, Port Huron senior.

Spartans Place First
The Spartan sailors won 8 out of 12 races to place first at the Wayne invitational regatta May 5-6 at Cass lake. Carol Stewart was named high-point skipper of the event. Tabulations were: 1. MSC, 2. Bowling Green, 3. Wayne, 4. University of Detroit.

Last weekend the club went to the regional championships at University of Michigan and sailed seven races of two divisions each. A gale capsized the craft manned by Jewell and Janice McInerney, Tonawanda, N.Y., sophomore, and they were rescued by a crash boat.

Regional ratings were: 1. Purdue, 2. Toledo, 3. U. of M., 4. Wayne, 5. MSC and Bowling Green, tied, 7. University of Detroit.

Foreign Students to Prepare Dinner

The YWCA will hold an international dinner Friday evening from 6 to 8 at College house. Thirteen women representing Germany, Greece, India, Pakistan, Denmark and United States will prepare the dinner in College house in the afternoon.

WOMEN'S PAGE

Margaret Fuller Editor

DINNERS AGAIN NEXT YEAR

Fraternities, Sororities Score: Internationals to Visit More

Foreign students will feast with Greeks again next year, according to Patricia Gilpin, Mortar Board president.

Mortar Board sponsored a friendship program between fraternities and sororities and foreign students winter and spring terms this year. With the cooperation of the Greeks and Dr. Shao Chang Lee, director of the International center, foreign students ate dinner at the fraternity and sorority houses.

Each sorority invited two women. Fraternities were put on a voluntary basis and selected men from a list at the International center.

Dr. Lee commented yesterday that the project was "a wonderful eye-opener" for foreign students. "The students who participated reported they gained a valuable insight into the fraternal organizations. They were impressed with the spirit of service and friendliness in the organizations," he said.

Red Cross Swim Course Attracts 90

About 90 swimmers turned out Tuesday night for the first session of the water safety instructor's course in American Red Cross life saving in the Women's pool.

The age qualification has been lowered to 18. Ernie Goetz, mid-west representative of the American Red Cross water safety service and instructor of the course, revealed.

The class was split into two sections. Section one will meet from 7 to 10 p.m. in the Women's pool Thursday of this week and Monday, Wednesday and Friday of next week.

Section two will meet Wednesday and Friday of this week and Tuesday and Thursday of next week at the same hour and place.

Ballot Box

New officers of Alpha Delta Sigma, national advertising fraternity, are: President, Donald Smith, Detroit; freshman vice-president, John Gage, Plymouth; sophomore secretary, Ford Slater, Grosse Pointe; and treasurer, Roger Sherb, Grosse Pointe.

Recently elected Alpha Chi Sigma officers are: President, Albert Caputo, Chicago; junior vice-president, Frederick Johns, Palmyra, N.Y.; sophomore second vice-president, LaVern McElroy, Lansing; and secretary, Charles Wojcik, Lowell, Mass.

Recently elected Gamma Phi Kappa officers include: President, Ellen Hicks, Lincoln Park; sophomore vice-president, Jan Besserman, Hillsdale; freshman secretary, Mary Norton, Traverse City; sophomore secretary, Constance Thompson, Pontiac; and treasurer, Joan Von Dettie, Saginaw.

CREST
DRIVE-IN THEATRE
U.S. 16 1/2 Miles East of the Campus
★ LAST TIMES TODAY ★
AT WAR WITH THE ARMY
Also
CHANGE OF HEART
Susan Hayward & John Carroll
Also Cartoon
FRIDAY and SATURDAY
DAKOTA
Starring with Lucille Ball
LATE SHOW SAT. NITE
"Cat's Claw Murder Mystery"
FIRST and ONLY
Local Showing This Year
SUN. & MON. MAY 20-21
DON'T BE A DOPE
Lila Leeds
THE DEVIL'S WEED
Shocking Spectacle of the Caribbean Sea
G.I. LOVE
Adm. Adults 60c - Children Under 17 FREE

Liebermann's
OFF TO A "Flying" Start
WITH

Available in single pieces or complete matched sets for men and women.
You'll enjoy years of happy travels with your Amelia Earhart luggage, for it's built to take every kind of modern travel. It's so light... so smart-looking... so rugged, with its all-welded plywood "cushion edge." Come in and make your selection of style and color now.
Liebermann TRUNK CO.
107 South Washington Ave.
Travelware ••• Gifts ••• Handbags

Air Step Spectators
BROWN and WHITE
BLUE and WHITE

\$11.95
De Camp's
"On Campus Since 1927"
GOOD SHOES WELL FITTED

WHAT!
NATIONALLY ADVERTISED WOMEN'S SHOES FOR ONLY
\$1 A PAIR?
YES!
When You Buy One Pair At The Regular Price
You are entitled to an extra pair of equal value or less for just \$1. Buy both pairs for yourself or share the purchase with a friend. All types, colors, leathers, heel heights...
For Now, For Summer

Dress Shoes! Sports! Casuals!
Come Prepared To Buy Several Pairs At These Tremendous Savings.
ALL SALES ARE FINAL NO EXCHANGES OR REFUNDS
Now you may say "charge it" at
TOWN & COLLEGE SHOP
OPEN THURSDAYS TILL 9
PARKING IN REAR
Nationally Advertised Jacqueline, Connie and Paris Fashion — All From Regular Stock
Summer Shoes Not Included

COLLEGE INN ANNOUNCES NEW HOURS — SUNDAY thru THURSDAY — 10:45 a.m. to 10 p.m. — FRIDAY and SATURDAY — 10:45 a.m. to 12 p.m.

Frosh, JV Baseball Teams Meet Today

MSC's freshman baseball squad will meet the junior varsity Friday afternoon at 4 on the field just west of Jenison fieldhouse.

This will be the fifth game of the current spring series between these teams. The series now stands at two wins for the frosh, one for the JV's and one tie.

The frosh are expected to line up as follows: Don Wadsten, 2nd; Al Taylor, 3rd; Don Peterson, ss; Paul Thomsberg, cf; Dave Hershey, lf; Hal Risch, cf; Dick Diansse, 1st; Mike Vorkarich, c; and Bob Canon and John Rappe, p.

Coaches "Buzz" Bowers and Ed Zebiak said that the frosh squad will be cut Monday from 34 to 25 players. This will be the final pining of the year.

Both coaches agreed that the job of cutting the squad to the 25 player limit is a task not to be desired. Coach Bowers said that the squad is an exceptionally good one. Coach Zebiak called the squad "one of the most cleanly conditioned squads to come along in many a year."

13th Champ

When he annexed the 167-pound NCAA wrestling championship this year, Gene Gibbons became the 13th national champion produced by Michigan State under Coach Fendley Collins.

Frosh Relay Team Sets New Record

The freshman sprint medley relay record was broken recently by a team composed of Lyle Garbe, Ray Dosky, Lou Vargha, and Dick Jarrett. The new record, of 3:34.2 tops the old one of 3:35.8 set by Bob Hill, Bob Adcock, Isaac Westmore, and Bob Wilson in 1935.

Lyle Garbe ran the 440 in 51.8, while Ray Dosky and Lou Vargha each averaged 22.4 in the two 220 legs. Dick Jarrett finished a hot 880 in 1:57.6 to complete the record.

Coach Roy Niemeyer thought the record remarkable in that it was set under adverse conditions including a very strong wind.

Didn't Wait Long

Two Michigan State baseball players, Capt. Vince Magi and first baseman Bob Ciolek, tied Big Ten records in their first official conference game. Magi poled two triples to tie an off-equaled mark and Ciolek participated in four double plays.

'Mural Schedule

SOFTBALL
Thursday, May 17, at 6:30
Old College 1
DZV vs. Vandervoort
Old College 2
Abbot 16 vs. Abbott 18
Old College 3
East Shaw 10 vs. East Shaw 1
Dom Hall 1
West Shaw 1 vs. West Shaw 6
Shaw Field
Snyder 17 vs. Snyder 10
BOWLING
Tuesday, May 17 at 6:30
1-2 EE vs. 333 Club
3-4 Hawaii Club vs. Sportsmen

This Week

Thursday, May 17—Tennis, Michigan, at home.
Friday, May 18—Baseball, Indiana, at Bloomington, Ind.
Tennis, Ohio State, at home.
Saturday, May 19—Baseball, Indiana, at Bloomington, Ind.
Track, Illinois, at home.
Golf, Northwestern, at Evanston, Ill.

GOLFERS

TOURNAINE GOLF COURSE
NOW OPEN
Students Welcome
Clubs For Rent
Located at intersection M-78 and US-16

Lambda Chi Alpha, ATO Win to Reach Finals in Intramural Softball League

Lambda Chi Alpha, last year's IFC softball champs, gathered one run in the first inning and another in the second to score a 2-0 win over Delta Chi, Tuesday night. The win advanced Lambda Chi into the final round of the softball playoffs.

Pitcher Walt Kuhta dominated the play throughout the game, limiting the Delta Chis to two hits in the five innings of play.

A base on balls in the first inning followed by a double by first baseman Dick Ouellette gave the Lambda Chis what proved to be the winning run. They added another run in the second inning to clinch the game.

ATO eked out a one run victory over AGR by coming from behind in the last half of the fifth inning to win by the score of 6-5. The win advanced ATO into the

finals against Lambda Chi.

In another league game, AEPI stopped farmhouse, 8-3. Ed Bean was the winning pitcher for AEPI.

The biggest score of the night came when ZBT overwhelmed Phi Delta Theta by a score of 15-3.

SUMMER JOBS FOR COLLEGE MEN

Michigan State Highway Dept. Needs 200 Engineering Aides For Expanded Highway Program

All male students eligible to apply. Desirable outdoor work. Sal. \$190.00 per month. Traveling within various areas of the State. \$1.00 per day expense money.

Apply Today — 9-4 p.m.
College Placement Office
To Take Civil Service Exam

Examination Schedule

The last day of classes for the Spring Term is Monday, June 4, 1951

COMPREHENSIVE EXAMINATION SCHEDULE:

Course	Exam. Hr.	Day	Place
Written & Spoken English	10-12	Tues. June 5	Jenison Fieldhouse
Theory	7-9 PM	Thurs. May 24	Auditorium
Speech & Special Persn.	9-12 AM	Sat. June 2	WSE Bldg
Speech Students only	10-12	Wed. June 6	Jenison Fieldhouse
Biological Science	10-12	Wed. June 6	Auditorium
Physical Science	10-12	Wed. June 6	Jenison Fieldhouse
Social Science	10-12	Wed. June 6	Jenison Fieldhouse
Effective Living	10-12	Wed. June 6	Jenison Fieldhouse
History of Civilization	10-12	Wed. June 6	Jenison Fieldhouse
Literature & Fine Arts	10-12	Wed. June 6	Jenison Fieldhouse

TERM END EXAMINATION SCHEDULE FOR BASIC COURSES:

Written & Spoken English	10-12	Tues. June 5	3:30-5:30
Theory	7-9 PM	Thurs. June 6	3:30-5:30
Speech & Special Persn.	9-12 AM	Sat. June 2	WSE Bldg
Speech Students only	10-12	Wed. June 6	Jenison Fieldhouse
Biological Science	10-12	Wed. June 6	Auditorium
Physical Science	10-12	Wed. June 6	Jenison Fieldhouse
Social Science	10-12	Wed. June 6	Jenison Fieldhouse
Effective Living	10-12	Wed. June 6	Jenison Fieldhouse
History of Civilization	10-12	Wed. June 6	Jenison Fieldhouse
Literature & Fine Arts	10-12	Wed. June 6	Jenison Fieldhouse

EXAMINATION SCHEDULE—OTHER THAN BASIC COURSES:

In the following plan, final examinations are determined by the days and hours the class is scheduled to meet during the term. To determine when your examination is to be given, find the block in column 2, 3, or 4 which lists the days and hours of your class. Example: A class meeting MWF 1-2, the examination will be 8-10, Thurs. June 7.

A class meeting TTh 4-5, the examination will be 7-9 p.m., Wed. June 6.

Day of Examination	Examination Hour
Mon. June 4	8-10 AM
Tues. June 5	1:30-3:30 PM
Wed. June 6	7-9 PM
Thurs. June 6	3:30-5:30 PM
Fri. June 7	8-10 AM
Sat. June 8	10-12 PM
Sun. June 9	1-3 PM
Mon. June 11	8-10 AM
Tues. June 12	1:30-3:30 PM
Wed. June 13	7-9 PM
Thurs. June 14	3:30-5:30 PM
Fri. June 15	8-10 AM
Sat. June 16	10-12 PM
Sun. June 17	1-3 PM

*M.T.W.T.F. or M.T.W.T.F.

**Given at 10-12 a.m.

Examinations will be given in the same classroom as assigned for class meetings at the end of the term. All students, instructors, and room schedules will automatically clear if all courses follow this schedule.

NOTE: At least two of the days and hours must follow the regular pattern. In a few courses, at the request of the department concerned, the final examination has been scheduled by the single hour lecture section and in some instances students may encounter conflicts. In that event, the examination scheduled by the class meeting two hours a week would take precedence over the examination scheduled by the single hour lecture. The examination would have to be arranged between the student and the department requesting the special scheduling of its examination.

If there are any questions, call Mrs. Schue in the Registrar's Office (Ext. 561).

WATCH FIGHTS ON OUR TELEVISION SET

DELICIOUS MEALS served in an efficient fashion are perfect for you. Variety of menu and reasonable prices will add to your pleasurable eating. Full meals served right up till closing time.

DINNERS . . . 65c and up
STUDENT SPECIAL . . . 45c

COLLEGE GRILL

315 E. Grand River

Open From 7:00 a.m. — 2:00 a.m. Every Nite

GOOD FOOD is our business



ASK FOR

The "WILSHIRE" Model

Featuring

- Continuous waistband.
- Deep Pleats — Drape Model.
- Customized extension French fly.
- Handy change pocket on inside of right pocket.

ALL WOOL
GABARDINE

\$11.95
2 for \$23

Marion & Sanders

220 N. WASHINGTON

Brewster

Speed Shirts

in quality rayon gabardine



Here's top sport shirt value by that famous shirtmaker, Brewster. Generously cut in lustrous washable gabardine — quality tailored with semi-standup collar, 2-button adjustable cuffs, and ocean pearl buttons. In a complete range of your favorite colors. A "find" at this price.

\$2.75

2 for \$5.00

Open Monday
9 a.m. to 9 p.m.

Lucon
TODAY • PTL & SAT.
VOLCANIC!
The story of Polynesian life in the South Pacific!
Bird of Paradise
Landscape
JOURNAL PAGE-CHANDLER
Shown 8-9 - 7:38 - 9:57
Aired - Color Cartoon - News

SLACKS
for
Play or Dress
\$5.95 UP
COMPARE OUR QUALITY AND PRICES BEFORE BUYING
Len Kositehek's VARSITY SHOP

Winthrop
White Bucks
\$13.95
Gards
One of America's Most Famous Campus Shops for Men

FRIDAY & SATURDAY AT SAM'S
280 PAIR OF FINE Gabardine, Tropical SLACKS
SPECIALLY PRICED
\$3.50
SAMS MAIN FLOOR
Copy—our regular 595 crease resistant gabardines and tropicals price slashed for this special selling! every pair has zipper front and deep pleats, all popular shades free alterations get a couple pair now—and save!
OPEN 9 till 9
FRIDAY
Sam's
37 E. Grand River

Remember
FREE Delivery Service For All Your Drugstore Needs - Ph. 89310

ALLEN'S Thrifty Drug
401 E. GRAND RIVER
SALE DAYS THURS. THRI. SAT.

Reg. Size
LUX SOAP
3 BARS 26c

Popular Brands
CIGARETTES
Buy the carton
\$1.75

FREE!
29c DRENE SHAMPOO WITH PURCHASE OF 57c DRENE
BOTH 57c

MSC
TEE SHIRTS
1.25 VALUE
78c

5
DRESSING COMBS
Assorted Sizes
25c

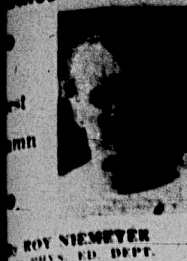
60c
Shower and
Bath Spray
39c

5c
BEECHNUT GUM
6 PKTS FOR
19c

SODA
SPECIAL!
Chocolate SODA
REG. 25c
11c
MADE WITH BORDEN'S ICE CREAM
Laming's Newest and Most Modern Prescription Center — Bring Us Your Next Prescription

200
Cleansing
TISSUES
13c

Archers' Corner



ROY NIEWYER
ARCHERY COACH

Michigan State archery club was formed last year at Michigan State and proved very successful in its infancy. The club is open to all male students and is open to the enjoyment of the members. Meetings this term will be held on Thursdays from 7 to 8 p.m. in the gymnasium.

At present are \$1.00 per person for the participation and \$2.00 for the equipment. Officers of the club include president Robert J. Smith, vice-president John J. Smith, secretary Clyde Dow, and treasurer John J. Smith.

Those who wish to enjoy a fast and wholesome activity that will give them the amount of exercise they need to play tennis.

BULLETIN

The Tau Omega won the track championship yesterday afternoon by gathering 50 points. Sigma Nu second in the track meet with a total of 39 points.

It is the first time in five years that Sigma Nu has failed to win the trophy.

Madison this activity. In Madison is a game for providing outdoor and enjoyment. Both sexes, young and the old can compete against each other on fair terms. This enhances Madison as a favorite recreation.

English picked it up and it had been after a while in Madison. Canada was next to take in this interesting game. The border states of the game and soon it had swiftly throughout.

Madison is now an international game having national and regional championships. Many education programs offer Madison activity and clubs are formed in America. This alone indicates the high carry of Madison.

Archers Vie National Meet

Archers are in the midst of a national archery association. Teams from MSC are participating in the national event, which will be held next week.

Houghton, Michigan, led the MSC team with 328 points and captured again this year. Shooting are Wednesday through Thursday at 7 a.m. and Saturday morning at 9 a.m. and Monday, Tuesday, Wednesday and Thursday of next week. Shooting is open to all.

Archers at the Homewood, Ames, Iowa, includes a market for the archery.

Archers at the Homewood, Ames, Iowa, includes a market for the archery.

Archers at the Homewood, Ames, Iowa, includes a market for the archery.

Archers at the Homewood, Ames, Iowa, includes a market for the archery.

Archers at the Homewood, Ames, Iowa, includes a market for the archery.

Archers at the Homewood, Ames, Iowa, includes a market for the archery.

Spartan Tennis Squad to Host Strong Wolverine Team Today

Try for Eighth Win in a Row This Afternoon

Michigan State's undefeated tennis squad will try for their eighth straight victory this afternoon against their traditional rivals, the University of Michigan.

The meet is slated for 2 p.m. and will be played on the clay courts east of Demonstration Hall.

In regular season play, the State netmen have swept 60 of 63 individual matches and are one of the favorites for the Big Ten title in their first year of competition.

Five of MSC's seven wins were 9-0 shutouts. Indiana managed two points and Illinois one for the only markers scored against the Green and White.

The Wolverines bring a team to East Lansing that has lost only to Illinois this season. That defeat broke a streak of 27 dual meet wins.

Last year, Michigan beat the Spartans twice, winning by 7-1 and 5-4 scores.

In this hard fought rivalry, both teams rise to great heights with the result that past records usually mean nothing.

The Spartans are in good shape for the meet. Although winning handsily over Illinois on Monday, Coach Tom Martin felt that his team's performance "was still a little below a top effort" and he added "the team should be at its peak against Michigan."

State will use its regular singles line-up, while Michigan will call on Al Hettrick, Steve Bromberg, Jack Smart, Mike Schwartz, Gene Barckart and Bob Curhan.

Friday the Spartans complete their conference dual meet schedule by meeting Ohio State on the MSC courts. The meet begins at 2 p.m. Last year, State beat OSU, 9-0.

English picked it up and it had been after a while in Madison. Canada was next to take in this interesting game. The border states of the game and soon it had swiftly throughout.

Madison is now an international game having national and regional championships. Many education programs offer Madison activity and clubs are formed in America. This alone indicates the high carry of Madison.

Archers Vie National Meet

Archers are in the midst of a national archery association. Teams from MSC are participating in the national event, which will be held next week.

Houghton, Michigan, led the MSC team with 328 points and captured again this year. Shooting are Wednesday through Thursday at 7 a.m. and Saturday morning at 9 a.m. and Monday, Tuesday, Wednesday and Thursday of next week. Shooting is open to all.

Archers at the Homewood, Ames, Iowa, includes a market for the archery.

Archers at the Homewood, Ames, Iowa, includes a market for the archery.

Archers at the Homewood, Ames, Iowa, includes a market for the archery.

Archers at the Homewood, Ames, Iowa, includes a market for the archery.

Archers at the Homewood, Ames, Iowa, includes a market for the archery.

Archers at the Homewood, Ames, Iowa, includes a market for the archery.



LEN BROWN

Late Sports Wire...

PHILADELPHIA—(P)—Big Gus Zernial of the Philadelphia Athletics tied a Major league record last night as he hit two home runs for six in three successive games.

DETROIT—(P)—Michigan's baseball team walloped Detroit, 13 to 2 yesterday by uncorking a 17-hit barrage that included three home runs.

Still Running

PFC Clark Atcheson, ex-member of the great Spartan cross-country team from 1946 to 1949, is now running for the Quantico Marine base team.

In the first four meets of the year, Atcheson, running the mile and two-mile events has scored 32 points on five firsts, two seconds and a third.

First Titles

George Bender and Gene Gibbons, Michigan State's 167-pound and 177-pound wrestlers, have written their names indelibly in Spartan records. They won 1951 Big Ten grappling titles, the first in any sport for athletes from the lion's baby member.

'Mural Scores

Phillips 2, 13; Phillips 1, 0
Mason 5, 3; Mason 3, 2
Snyder 17, 2; Snyder 16, 1
Snyder 10, 4; Snyder 11, 0
Snyder 14, 2; Snyder 15, 1
East Shaw 1, 10; East Shaw 2, 5
DZV, 1; Vandervoort, 1
Abbot 18, 6; Abbot 12, 4
ASCE, 9; Newman club 0 (forfeit)
Abbot 10, 9; Abbot 13, 0 (forfeit)

Name Finalists in Net Tourney

Winners have been determined in the four blocks of women's intramural tennis, according to Miss Lucille Dailey, head of women's tennis activities.

Mary Ellen Weigle, Grand Rapids freshman and Kappa Kappa Gamma, leads block one.

Other finalists are Valerie Kallen, Birmingham sophomore and Zeta Tau Alpha; Gladys Constantine, Grosse Pointe junior and Delta Delta Delta; and Lucille Kappfinger, Saginaw junior representing Sigma Kappa.

Play-offs are scheduled for next week to determine the 1951 champion.

Baseball

(Continued from Page 1.)
Lindley led off with a line double to left-center. Blanchard and catcher Dick Edin popped out before Carlson walked. But Moser ended the inning with a grounder to second.

Unwise baserunning cost the Spartans a chance for more runs in the fifth. After Ciolek had singled home Magi for the second run of the frame, Lindley pounded a single to left. Ciolek went to third on the hit and tried to score when the throw from left skidded past the third baseman. He was out by 20 feet.

Another possible scoring opportunity was lost in the eighth when, with one out, Magi was thrown out on an attempted steal of third.

The Michigan State fielding was flawless as Carlson kept the Michigan Normal batters' popping up or hitting easy grounders.

Magi made a running catch of Bob Shankie's long fly in the fifth to kill an extra base blow. Other than that most of the fielding was handled in routine fashion.

The win brought State's record to 13 victories in 17 games. The Hurons have won but three of 13.

This weekend the Spartans set back into Big Ten play with two games scheduled at Bloomington, Ind., against Indiana university.

Box Score

MICHIGAN	AB	R	H	E
STATE	30	3	11	5
Mason, M	4	1	1	0
Ohler, 2b	4	0	1	0
Rivich, ss	4	0	1	0
Magi, cf	4	1	2	1
Ciolek, 1b	4	0	1	0
Lindley, rf	4	1	2	1
Blanchard, 3b	4	0	1	0
Edin, c	4	0	0	0
Johannick, p	1	0	0	0
G. Carlson	2	0	0	0
Totals	30	3	11	5

MICHIGAN	AB	R	H	E
NORMAL	33	1	6	1
Shankie, 2b	4	0	1	0
Stroth, ss	4	0	0	0
Ortiz, 1b	4	0	1	0
Paige, 3b	4	0	1	0
Snyder, 2b	4	1	2	1
Tomesyk, rf	4	0	1	0
Oestrike, cf	4	0	1	0
Kael, c	2	0	0	0
Sheridan, p	1	0	0	0
Tommeland	1	0	0	0
Totals	33	1	6	1

*Struck out for Sheridan in ninth.

Mich. Normal 000 000 001—1 6 1

Mich. State 000 100 000—3 3 0

F—Mason. BB—Magi. (4th).

Blanchard. 2B—Lindley. Tomesyk. 3B—Paige. 1B—Ortiz.

SR—Rivich. LF—Edin. G. Michigan Normal 9. BB—Carlson 3.

Sheridan 3. RF—Carlson 5. Sheridan 1. WRP—Mason (Carlson). Winner—Carlson. Loser—Sheridan.

Trout Scatter Four Hits, Nips Senators, 7-1

WASHINGTON—(P)—The Detroit Tigers last night sandwiched three singles among five walks to score five runs off Al Sims in the fourth inning and defeat Washington, 7-1, behind the four-hit pitching of Dixie Trout.

In handling the Senators their fourth straight loss, Trout struck out six, walked only one and supplied two of the Tigers' eight hits.

Jerry Priddy's triple and Don Kolloway's grounder gave Detroit a 1-0 lead in the first inning.

The Tigers hit the jackpot in the fourth. Kolloway and George Kell opened with singles. Sims forced across a run by walking. Vic Wertz and Hoyt Haver, struck out Steve Souchock, but then walked Joe Ginsberg and Johnny Lipon to force across two more runs. Trout's single scored Evers and Ginsberg and blasted Sims off the mound.

Detroit picked up its final run off Julio Moreno in the fifth on Kell's double and Ginsberg's single.

Washington got its only run in the fourth on singles by Eddie Yost, Gil Coan and Sam Mele.

PATRONAGE
STATE NEWS ADVERTISERS



Informal Comfort in Style-perfect Summer Formals

RAYON TROPICAL WORSTED

Tailored by —

Mart Schaffner & Marx

Cost \$40

PALM SPRINGS CLOTH

Tailored by —

Palm Beach

Cost \$29.50

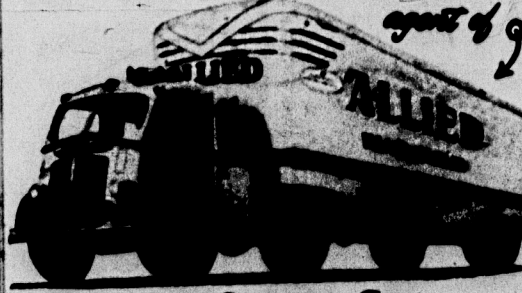
TROPICAL WEIGHT TROUSERS

\$14.50 and \$17.95

LANSING STORAGE CO.



no.1 specialist in packing!



Lansing Storage Co.
440 No. WASHINGTON
PHONE 9-7568

CO. 1 00 U.S. BARRIERS • NO. 1 10 SERVICE • NO. 1 10 0000 BARRIERS

Announcing . . .

THE SKIN OF OUR TEETH

Fairchild Theater

May 17, 18, 19

AT

8:15 P.M.

TICKETS AT UNION

Opening Night

Tonight!

Only a Few Tickets Left!

Don't Miss This Prize-Winning Comedy

\$1.00 Tax Incl.

Tropical-weight white dinner coats and midnight blue trousers

One of life's pleasant little luxuries—and so easy to obtain—is to change into summer formals for your more gallant occasions.

The jackets drape so lightly and easily...with roomier shoulders, generous lapels...you'll feel as casual as in a sports outfit, yet they're authentically formal to make you look your handsome best.

Small's

211 SOUTH WASHINGTON

Home of MART SCHAFFNER & MARK CLOTHES

Reds Open New Offensive

Allies Hit on Entire Front by Spearhead of 75,000

TOKYO—(P)—Reds smashed into Allied lines in central and Eastern Korea yesterday in the opening battle of the Communists' second spring offensive.

The first thrusts ripped deep holes in the Allied positions in the mountainous east.

Senate OK's Bill to Send Grain to India

WASHINGTON—(P)—The senate yesterday approved a bill authorizing the shipment of two million tons of grain to famine-threatened India on a 100 per cent loan basis.

The \$190 million loan is repayable at low interest rates over a period of more than 30 years.

In passing the legislation, the senate rejected a plea by President Truman who had asked congress last February to send \$150 million worth of food to India as an outright gift.

Several senators noted that India also might be used in atomic weapons in return for the grain.

Passage came by voice vote after the senate voted 52 to 32 to approve the obligation as a half-loan, half-gift as recommended by the senate foreign relations committee.

Michigan Senators Ferruson and Moody split on the roll call vote by which the senate decided to put the shipment on a straight loan basis.

Ferguson voted with 36 other Republicans for the amendment. Moody joined 29 other Democrats who opposed it.

The amendment also provides that the United States may negotiate with India for repayment of at least part of the loan in strategic materials.

Spearheaded by an estimated 75,000 men in an offensive force believed to total nearly 500,000, the Reds forced a general withdrawal southwest of Inje. It is some 25 miles inland from the east coast and 75 miles northeast of Seoul.

Allied artillery mowed down waves of attacking Reds. Field dispatches, delayed by censors, reported an estimated 2,000 Reds were killed by artillery alone during the opening stages of the offensive Wednesday.

First reports on the offensive told only of waves of Red foot soldiers but made no mention of tanks or heavy artillery.

At U.S. Eighth army headquarters, the assaults were described as general from the vicinity of Kanyoung in the West-Central sector to the east coast. Kanyoung is 32 miles northeast of Seoul.

One South Korean division on the east coast was forced back an unreported distance. It was the first allied unit struck in force after a series of Red probing attacks. The assault spread quickly to American forces east and southeast of Chunchon, more than 45 miles northeast of Seoul.

The 20-mile mountainous stretch between Chunchon north-eastward to Inje apparently was the main battleground.

Fog and low clouds mantled the front and hampered Allied warplanes. Spring foliage, turning the valleys green, provided additional cover for the Reds.

In Tokyo, the general headquarters mid-morning communiqué reported allied forces "exhausted limited withdrawals as enemy pressure increased."

Bradley

(Continued from Page 1.) was sold at the meeting which led to MacArthur's dismissal six days later.

Bradley refused on the grounds that such a disclosure would destroy him in the role of a confidential adviser to the president. And today Mr. Truman upheld Bradley in his refusal—saying through an aide that Bradley should not answer.

Russell declared he is "thoroughly convinced" Bradley is acting within his rights in refusing the testimony but Republican senators took sharp issue with him.

Senator Wiley told reporters: "The real question is whether the people are entitled to know how this deal (MacArthur's dismissal) was engineered and who participated in it. We want to know what was said."

Bradley denied to the senators that any "iron curtain" had been pulled over his testimony. He said he was willing to tell what conclusions were reached at the meeting attended by himself, the president, Secretary of State Acheson, Secretary of Defense Marshall and Presidential Adviser W. Averell Harriman.

But Wiley, Senator Knowland (R-Calif.) and other Republicans insisted he should tell what was said in the conversations leading to the decision.

Seyffert Says:

The Friendly Store on the hill.

EAST LANSING PHARMACY

517 W. Gr. River, E. Lansing

Comp Notice

Students who have special permission to take the written and spoken English comprehensive examination may pick up speech topics and room assignments starting May 16 through May 24 in room 306, Administration building.

ISA to Outline Fall Activities Plans

Plans for fall activities will be outlined by the Independent Students' association at a meeting Monday at 8 p.m. in room 32 of the Union.

Also included on the agenda will be the elections of the five officers. A slate of candidates has been drawn up, but nominations will be accepted from the floor Monday. Joanne Parsons, ISA president, said.

New officers will be installed and new members initiated at the dance picnic to be held this term.

The longest game during the National League's inaugural season of 1876 was a 16-inning game on July 10 with the New York Mutuals beating Louisville, 8-5.

LANSING DRIVE-IN
THEATRE
NOW SHOWING: 14 RUN!
Bill Mauldin's
Up Front
PLUS News-Cartoon-Added Short

Scholarship Key Awarded Robert Grant by Delta Sigma Pi

Robert Ellis Grant, Bancroft senior, was awarded the Delta Sigma Pi scholarship key Wednesday noon at the second annual banquet of that professional fraternity. Herman J. Wyngarden, dean of the School of Business and Public Service, made the presentation.

Grant, a 24-year-old veteran, is not a member of the Delta Sigma Pi professional. However, his 3.67 all-college average made him eligible for the award.

The key, annually awarded the male graduating senior of the commercial departments with the highest scholastic average, is the second presented locally. Over 1,200 have been awarded throughout the nation since 1912 by the national fraternity.

In accepting the key, Grant said simply, "I am highly honored, but the honor should go to my family, who taught me that anything worth doing is worth doing well."

Speaking instead of President

John A. Hannah, Prof. Edward A. Gee, head of the accounting department, pointed out that scholarship should be a sincere desire to learn the subject, and not a mere action to obtain grades.

Other honor guests and persons attending the Union banquet were Prof. Bernard R. Proulx, head of the hotel administration department; Prof. Charles C. Killingsworth, head of the economic department; Prof. Frank S. Montgomery, of business administration; Nick Pagan, assistant counselor for men; Wes Shannon, Jackson senior and toastmaster; and Bill Stahlman, Wyandotte sophomore and banquet chairman.

Some 22 Delta Sigma Pi members attended the banquet.

Patronize State News Advertising

Let's Make a Date For Dinner at

The Poplars

Air Conditioned For Your Comfort

Original

GOLD'N FRIED CHICK'N THE POPLARS

Fraternity and Sorority Dinner Parties

TAKE OUT — PHONE 4-2113

B.F. Goodrich

"P.F." CANVAS SHOES

FOR ACTIVE SUMMER SPORTS

RAYSHORES

Children's Sizes 5 to 12 \$3
Misses' Sizes 12 to 4 \$3.15
Both in Red or Blue

Women's Blue Rayshores \$3.45

*Posture Foundation

DESIGNED TO HELP

• Loosen Foot Strain
• Guard Against Flat Feet
• You Go Full Speed Longer

Jacobson's

East Lansing

Sunback Cottons

by MARGO WALTERS

so much summer fashion for such tiny prices . . .

8.95 and 10.95

Delightfully carefree and pretty, sun-bare dresses with their own boleros and jackets . . . colorfast and washable with ways of staying cool and acquiring a tan while temperatures soar. With their tops, they're seen in town . . . alone, they're country-fresh. Sizes 10 to 20.

a. Cotton broadcloth, embroidered at bodice and pockets, with a black pique jacket that doubles as a bolero. Pink, aqua, chartreuse.

10.95

b. Cotton broadcloth, traced with gold print that's washable and permanent shirring at the bodice. Red, green, purple, black.

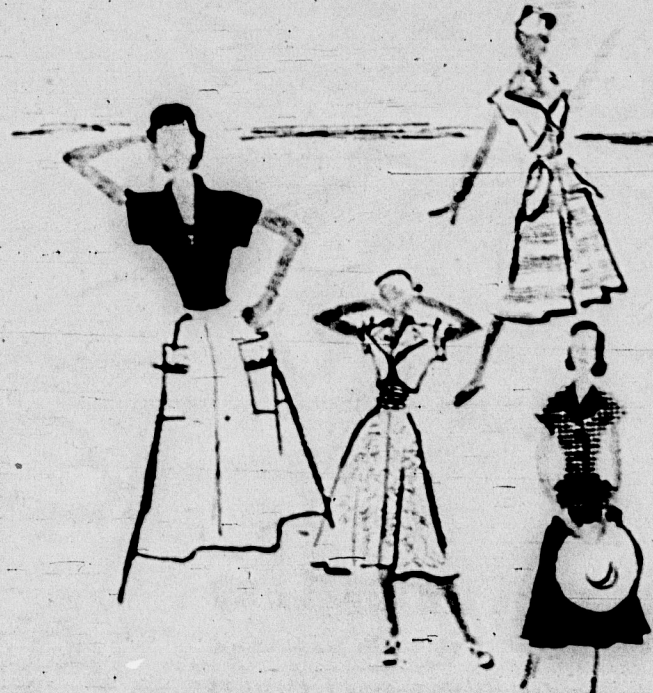
10.95

c. Woven stripe cotton, with a combination plain and striped bolero, a halter top and flap pockets. Pink, lime or maize.

8.95

d. Cotton broadcloth and check gingham, slim and slender, with a fitted checked jacket. Navy, brown or black.

10.95



Jacobson's

East Lansing