

See Pictures Of Fire, Page 2

Michigan State News

MSC DAILY STUDENT PUBLICATION

SEE
LES BROWN
IN GRILL TODAY

WEATHER:
PARTLY CLOUDY
RISING TEMPERATURE

EAST LANSING, MICHIGAN — SATURDAY, FEBRUARY 10, 1951

FIVE CENTS

No. 76

Aerial Truck Crew In Action



Firemen of the Flint fire department maneuver the high-pressure hose to play a stream of water on a burning area of the State building seventh floor. Fire fighters were forced to pump water "up and in" due to the height of the building. Cold weather continued to hamper firemen by freezing equipment yesterday.

State Building Fire Continues; Damages Grow

Fire Marshall Says Fire May Smoulder Till Sunday

By DEAN MORTON and PHIL GUNBY

The State building fire continued last night as damage estimates rose to \$4 million and nine more firemen were treated for smoke exhaustion and injuries.

Fire Marshall Renner said the fire would continue to smoulder. "It will be tomorrow or Sunday before it is all out," he said.

Renner said yesterday afternoon that the fire was limited to the mezzanine between the sixth and seventh floors.

Equipment Fails

Yesterday afternoon at 2:30, 10 tons of telephone transmitting equipment crashed through the seventh floor. The equipment handled all Capitol building and State building communications. A temporary switchboard is now handling Capitol building calls.

The fire, originating on the mezzanine about noon Thursday afternoon, had already burnt out the seventh floor.

Records Destroyed

Valuable highway and conservation department records were destroyed on the mezzanine. Agricultural department offices were destroyed on the seventh floor.

"I don't think there's any fire left on the seventh floor—there may be a little," Renner said. Friday morning firemen had crept up to the burning mezzanine and sprayed the fire directly from within the building for the first time.

Firemen Retreat

However, smoke and heat had again forced the firemen down from the top floors by Friday afternoon. "We can't kill people for a fire," Renner said.

Yesterday morning the fire jumped to the sixth floor, its lowest level. However, the sixth floor fire was put out by yesterday afternoon, according to Renner.

Firemen Injured

Nine firemen were injured or overcome by smoke Friday morning. Five were sickened by the smoke. Thursday night, Fire Chief Decker suffered seared eyes early Friday morning but returned to action after being treated.

Four streams of water were being directed into the windows of the seventh story Friday afternoon, from aerial ladders and construction cranes.

A hose attached to a construction crane on the north side of the building was put out of action at noon when a Lansing water pump broke down.

Water Dumped

The streams of water were not reaching the fire on the mezzanine directly. Firemen said the water was being pumped in mainly to cool the bottom of the seventh floor.

The construction of the building prevented firemen from attacking the mezzanine flames where they were thickest.

Fear Expressed

Early yesterday morning fear was expressed that an overhanging cornice on the northeast corner of the building might drop.

Later, the top of a four-story imitation column on the north side swung slightly out of line.

State Office Fire Probes Requested

Williams And Hoxie Seek Investigations

By ARNOLD SPELLMAN
STATE NEWS Capitol Reporter

A double-barreled investigation into the circumstances surrounding the State Office building fire appeared likely yesterday as displaced state departments scurried to find emergency quarters.

Gov. G. Mennen Williams had already requested a police investigation when Rep. T. Jefferson Hoxie (R-Grand Haven), submitted a resolution calling for the appointment of a special house investigating committee.

Representative Hoxie is concerned over the possibility of sabotage, inadequacy of Lansing fire fighting equipment, and delay in aid from outlying communities.

Act Of Agents

He wants to determine whether recent fires in state buildings may not be the act of a foreign agent, "seeking to destroy valuable records which might assist in the preparedness program of this country."

In view of legislative plans to construct a new supplementary office building west of the capitol, Hoxie feels the legislature should be informed of the ability of the Lansing fire department to cope with fires on state property.

People Should Know

He also believes the people of the state are "entitled to know" the reasons for the delay in requests for assistance from the fire departments of other communities.

Governor Williams said he would be glad to cooperate with the legislature in any investigation.

Offers Four In

Offers to house the new homeless departments were pouring in. Controller Robert F. Steadman, of the state department of administration, is allocating office space from his temporary headquarters in the old YMCA building.

It was expected that all agencies would be operating again by Tuesday morning.

Entrance Permitted

Department heads were being permitted entrance to obtain records needed for emergency operation.

Governor Williams said that state employees would not suffer any loss of pay as a result of the situation.

Spartan Wrestlers Top Illinois, 15-9

Heavyweights Win Last Three Matches To Give Team Victory

By MIKE WRIGHT

Bender, Gene Gibbons and Frank Kapral won the three wrestling matches to give State a 15-9 win over the Illinois fieldhouse last night.

The State matmen behind three points, George Bender decided Phil Abramovich to tie the score. Then Gene Gibbons took a hard-fought bout from Martin Schwartz, 4-3. Gibbons won his match with 20 seconds left on an escape.

Frank Kapral ended the evening with a 4-2 victory over Wayne Gaumer.

It was a repeat of the nine performances that these Spartan stalwarts have given in all five of State's wins this year.

Other winners for the Spartans were Ruben Shehigian, with a 12-4 score over Henry Price, and Bob Gang by a narrow 5-4 margin over Paul Higgins.

Illinois had three wins. Dick Pickard over Marty Sherman, Pete Compton over Joe DiBello, and Ray Pigozzi over Oris Bender.

123—R. Shehigian (S) dec. H. Price, 12-4

130—D. Pickard (I) dec. M. Sherman, 12-8

137—P. Compton (I) dec. J. DiBello, 5-0

147—B. Gang (S) dec. P. Higgins, 5-4

157—R. Pigozzi (I) dec. O. Bender, 3-2

167—G. Bender (S) dec. P. Abramovich, 5-3

177—G. Gibbons (S) dec. M. Schwartz, 4-3

Hvy-F. Kapral (S) dec. W. Gaumer, 4-2

12 of the second stanza broke the scoring ice for the Spartans.

Assisted by his line-backer Hickman and Cal, who scored at 14:50. Tom from Englestad was the first to score at 15:40 and followed by Walters second.

knocked in the rebound by Bob Gorman. Joe also received an assist on the play.

opened the third period at 1:15, assisted by Gorman and scored at 1:54 this time. Walters got the goal and the assist.

added their final goal at 3:37. Don Bodin was the scorer. Gorman got State's third goal at 9:37. He was assisted by Bob Zimmerman.

ra V. Bogue, 83, died Monday at her home at 2824 E. Street. The street was named after her.

one of the Michigan college forestry school. He died in 1907.

Bogue served for six years as a member of the school board. He was a member of the Peoples Church.

husband's death, Mrs. Bogue was a secretary in the State Department of Agriculture. She then took over the school.

will be held at 10:00 a.m. Feb. 12, at the funeral home.

Men Reveal Money Woes

st Of Dating Coeds Runs High

MARK LOU FOLGER

he thought dating cost him. And he wasn't sure it was worth it.

Even the "cheap" coffee date can run into money in a little while. A guy buying a daily cup of coffee for himself and "friend" would be out \$40 coppers so far this term. And this is without cigarettes. Two daily would total 80 cents.

"You usually figure on about 70 cents for food alone," according to Jack Foglio, New Rochelle, N.Y., senior. "That is, of course, unless you get a girl who eats nothing but steak dinners."

These were comments about usual weekend dates, but a J-Hop or similar weekend can add up to as much as \$20, with tickets, a taxi, and food.

Dates cost Alan Childs, Saginaw sophomore, about \$15 a weekend, but he thinks they're worth it.

Detroit sophomore John Hoffmeyer and Art Roman, Dearborn senior, estimated that dates are usually about \$2 to \$2.50. And Jim McArthur, Detroit junior, thinks you can squeeze by for about \$1.50. This includes bowling or a movie, and food.

But dating doesn't cost one man on campus a thing.

Bill Chris, Detroit junior, has solved the problem—he just doesn't take girls out.

is how much Dave Spring Valley, N.Y., junior

18-Year-Old Draft Okayed

WASHINGTON — (AP) Limited authority to draft 18-year-olds, and extension of draft service from 21 to 24 months was voted today by the senate preparedness subcommittee.

Further, the committee approved the idea of a modified "foreign legion" proposal under which up to 125,000 "carefully screened" foreigners could enlist in the U.S. army during the next five years.

Chairman Lyndon Johnson (D-Texas) said the vote on the 18-year-olds plan in the subcommittee, a branch of the senate armed services committee, was 7 to 1.

Senator Morse (R-Ore.) dissented. Under this plan, draft boards would have to take 48 available men in the present 19 to 23 age group before drafting any 18-year-olds. Then they would have to take first those nearing the age of 19, such as those 18 years and 9 months old.

Application for advanced ROTC may be made at any time by any student with a two-point all college average. If they are in basic ROTC, accepted applicants will be deferred from the draft until June of their sophomore year.

If still acceptable at that time they may enter the advanced program and be deferred until graduation. Upon graduation they will be assigned to a reserve unit.

Advanced ROTC

Application for advanced ROTC may be made at any time by any student with a two-point all college average. If they are in basic ROTC, accepted applicants will be deferred from the draft until June of their sophomore year.

If still acceptable at that time they may enter the advanced program and be deferred until graduation. Upon graduation they will be assigned to a reserve unit.

Advanced ROTC

Application for advanced ROTC may be made at any time by any student with a two-point all college average. If they are in basic ROTC, accepted applicants will be deferred from the draft until June of their sophomore year.

If still acceptable at that time they may enter the advanced program and be deferred until graduation. Upon graduation they will be assigned to a reserve unit.

Advanced ROTC

Application for advanced ROTC may be made at any time by any student with a two-point all college average. If they are in basic ROTC, accepted applicants will be deferred from the draft until June of their sophomore year.

If still acceptable at that time they may enter the advanced program and be deferred until graduation. Upon graduation they will be assigned to a reserve unit.

Advanced ROTC

Radioactivity In MSC Snow Not Injurious

Samples of radioactive snow have been found at MSC, according to the physics department.

But the white stuff is just snow, unless you have a geiger counter to examine it. It's all so confusing.

Report from Professor J. C. Lee, physics department, to MSC students on the condition of the snow which presently covers the campus:

Radioactivity of measurable intensity was found associated with snow gathered from the MSC campus Feb. 6 and 7. One of the samples was made by evaporating 10 pounds of snow to dryness. One inch from this concentrate sample the radon level approximated by an imperial formula was to the order of 1/1000 of the currently accepted physiological tolerance dose with the relative concentration in geometric distribution encountered outdoors.

Editor's note: After wrestling with the above paragraph, we begin to see the light. It's not the snow itself that is radioactive, but "bitch-bitching" foreign particles. They are not dangerous, so there's nothing to worry about.

The general radiation level due to snow is probably far below the threshold of physiological effectiveness.

Low intensity of activity limits the complete study of the nature of the radiation, but it seems that the radiation has low energy and probably consists mainly of charged particles rather than gamma or other electromagnetic radiation.

HMMMMMMMM, looks like the same old stuff to us!

Editor's note: After wrestling with the above paragraph, we begin to see the light. It's not the snow itself that is radioactive, but "bitch-bitching" foreign particles. They are not dangerous, so there's nothing to worry about.

The general radiation level due to snow is probably far below the threshold of physiological effectiveness.

Low intensity of activity limits the complete study of the nature of the radiation, but it seems that the radiation has low energy and probably consists mainly of charged particles rather than gamma or other electromagnetic radiation.

HMMMMMMMM, looks like the same old stuff to us!

Editor's note: After wrestling with the above paragraph, we begin to see the light. It's not the snow itself that is radioactive, but "bitch-bitching" foreign particles. They are not dangerous, so there's nothing to worry about.

The general radiation level due to snow is probably far below the threshold of physiological effectiveness.

Low intensity of activity limits the complete study of the nature of the radiation, but it seems that the radiation has low energy and probably consists mainly of charged particles rather than gamma or other electromagnetic radiation.

HMMMMMMMM, looks like the same old stuff to us!

Allies Drive Reds To Han As Net Tightens On Seoul

TOKYO — (AP) Allied forces drove armored prongs to within four miles of Seoul, shelled the burned-out capital and elsewhere hurled back Red attacks.

The counterblows against United Nations forces south of Seoul were repulsed quickly.

Two veteran U.S. divisions were relentlessly tightening the noose on Chinese Reds trapped south of the Han river which flows past Seoul.

Chinese Weaken

Fading Red resistance in the west caused UN field commanders to speculate that the enemy's main strength south of the Han river had been shattered.

To the east, however, UN forces ran into heavy Chinese Red resistance on the right end of the western front, the U.S. Eighth army said.

Heavy Red Toll

Allied forces again took a heavy toll of Red troops in this killer offensive aimed primarily at hunting out and destroying the enemy. An Eighth army spokesman said communist casualties Thursday were 4,206.

This showed the total of Reds killed, wounded and captured to more than 61,000 since the limited drive began Jan. 25.

The Reds in the west—mostly Chinese—were backed against the thawing Han which flows around the southern outskirts of Seoul. Tank-infantry task forces of the U.S. 25th and third divisions landed the Red positions.

Editor's note: After wrestling with the above paragraph, we begin to see the light. It's not the snow itself that is radioactive, but "bitch-bitching" foreign particles. They are not dangerous, so there's nothing to worry about.

The general radiation level due to snow is probably far below the threshold of physiological effectiveness.

Low intensity of activity limits the complete study of the nature of the radiation, but it seems that the radiation has low energy and probably consists mainly of charged particles rather than gamma or other electromagnetic radiation.

HMMMMMMMM, looks like the same old stuff to us!

Editor's note: After wrestling with the above paragraph, we begin to see the light. It's not the snow itself that is radioactive, but "bitch-bitching" foreign particles. They are not dangerous, so there's nothing to worry about.

The general radiation level due to snow is probably far below the threshold of physiological effectiveness.

Low intensity of activity limits the complete study of the nature of the radiation, but it seems that the radiation has low energy and probably consists mainly of charged particles rather than gamma or other electromagnetic radiation.

HMMMMMMMM, looks like the same old stuff to us!

Council Drafts Executive Part Of Constitution

The executive portion of the new student government constitution was formulated and approved with the exception of the last article at a meeting of the Student council planning commission Thursday night.

The commission will probably complete the last article at the meeting this morning at 9, according to Gaylord Sheets, commission chairman.

After the executive portion is finished, the commission will begin work on the final part of the constitution. This part contains provisions for the judicial structure of the new student government.

Editor's note: After wrestling with the above paragraph, we begin to see the light. It's not the snow itself that is radioactive, but "bitch-bitching" foreign particles. They are not dangerous, so there's nothing to worry about.

The general radiation level due to snow is probably far below the threshold of physiological effectiveness.

Low intensity of activity limits the complete study of the nature of the radiation, but it seems that the radiation has low energy and probably consists mainly of charged particles rather than gamma or other electromagnetic radiation.

HMMMMMMMM, looks like the same old stuff to us!

Editor's note: After wrestling with the above paragraph, we begin to see the light. It's not the snow itself that is radioactive, but "bitch-bitching" foreign particles. They are not dangerous, so there's nothing to worry about.

The general radiation level due to snow is probably far below the threshold of physiological effectiveness.

Low intensity of activity limits the complete study of the nature of the radiation, but it seems that the radiation has low energy and probably consists mainly of charged particles rather than gamma or other electromagnetic radiation.

HMMMMMMMM, looks like the same old stuff to us!

Editor's note: After wrestling with the above paragraph, we begin to see the light. It's not the snow itself that is radioactive, but "bitch-bitching" foreign particles. They are not dangerous, so there's nothing to worry about.

The general radiation level due to snow is probably far below the threshold of physiological effectiveness.

Low intensity of activity limits the complete study of the nature of the radiation, but it seems that the radiation has low energy and probably consists mainly of charged particles rather than gamma or other electromagnetic radiation.

HMMMMMMMM, looks like the same old stuff to us!

Meningitis Strikes Hannah's Child

David Hannah, two and one-half year old son of President Hannah, was taken to Sparrow hospital Wednesday stricken with a severe case of influenza meningitis.

The onset of the disease was very rapid, according to Dr. Charles Holland, college physician. His condition is reported as slightly better.

Editor's note: After wrestling with the above paragraph, we begin to see the light. It's not the snow itself that is radioactive, but "bitch-bitching" foreign particles. They are not dangerous, so there's nothing to worry about.

The general radiation level due to snow is probably far below the threshold of physiological effectiveness.

Low intensity of activity limits the complete study of the nature of the radiation, but it seems that the radiation has low energy and probably consists mainly of charged particles rather than gamma or other electromagnetic radiation.

HMMMMMMMM, looks like the same old stuff to us!

Editor's note: After wrestling with the above paragraph, we begin to see the light. It's not the snow itself that is radioactive, but "bitch-bitching" foreign particles. They are not dangerous, so there's nothing to worry about.

The general radiation level due to snow is probably far below the threshold of physiological effectiveness.

Low intensity of activity limits the complete study of the nature of the radiation, but it seems that the radiation has low energy and probably consists mainly of charged particles rather than gamma or other electromagnetic radiation.

HMMMMMMMM, looks like the same old stuff to us!

Editor's note: After wrestling with the above paragraph, we begin to see the light. It's not the snow itself that is radioactive, but "bitch-bitching" foreign particles. They are not dangerous, so there's nothing to worry about.

The general radiation level due to snow is probably far below the threshold of physiological effectiveness.

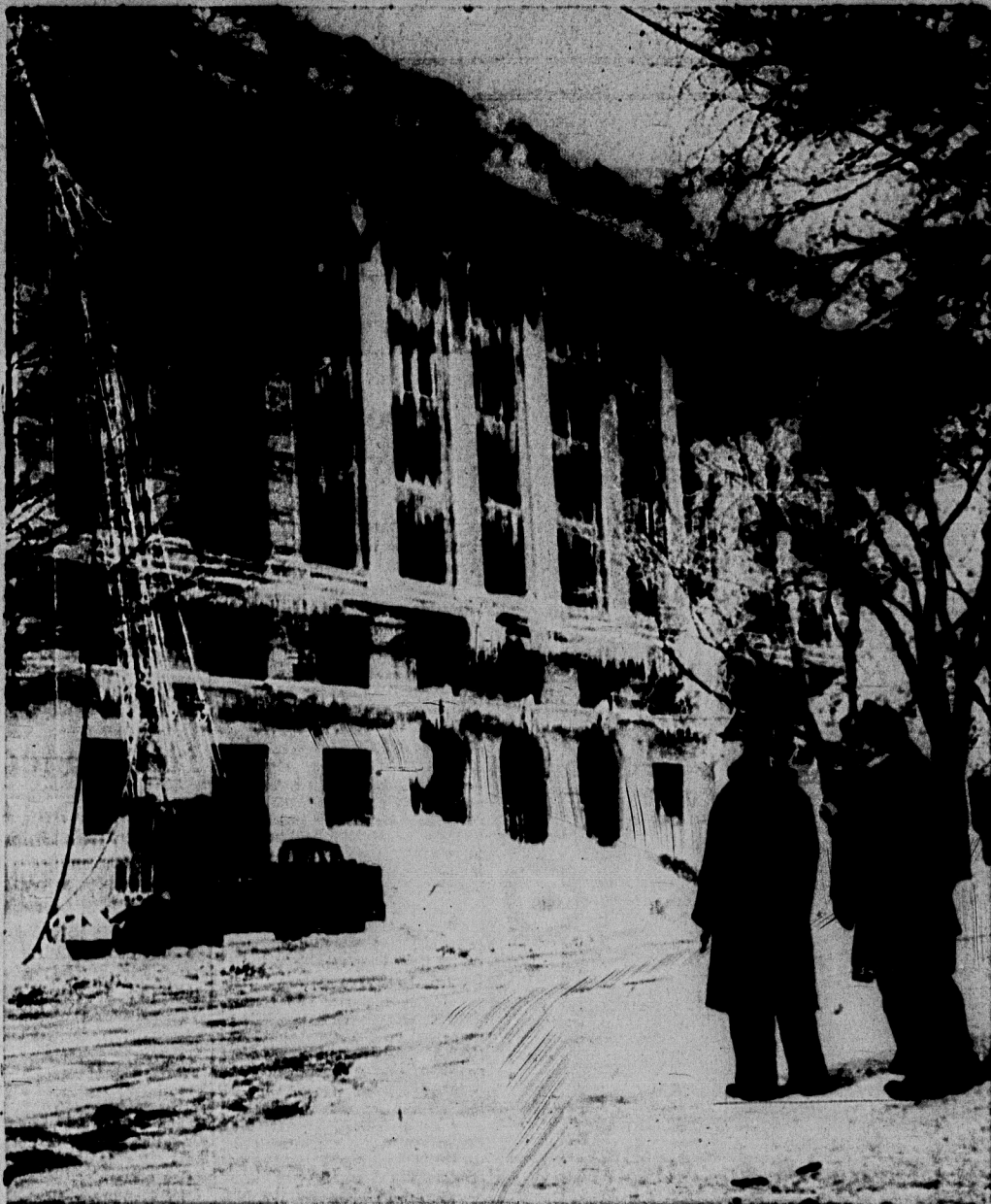
Low intensity of activity limits the complete study of the nature of the radiation, but it seems that the radiation has low energy and probably consists mainly of charged particles rather than gamma or other electromagnetic radiation.

HMMMMMMMM, looks like the same old stuff to us!

Editor's note: After wrestling with the above paragraph, we begin to see the light. It's not the snow itself that is radioactive, but "bitch-bitching" foreign particles. They are not dangerous, so there's nothing to worry about.

\$4,000,000 Up In Smoke

Rig Goes Into Action



Three firefighters watch as preparations are made to press a huge construction rig into service at the State office building fire.

Four rigs were in action at different positions around the building, pouring tons of water into the burning upper floors.

Evacuation



The deluge of water from upper floors forced firefighters to abandon the fourth floor and move all equipment downstairs. At times the stairway landing was ankle deep as fire towers poured water into the flames from outside.

Coffee Time



Fireman Joseph Knapko accepts hot coffee and a sandwich from Red Cross workers Mrs. Ida Harding and Mrs. Ella Kenyon. The Red Cross remained on duty all Thursday night and Friday.

Heap Big Smoke But No Fire -- Most Of The Time

The adage "Where there's smoke there's fire," was never better illustrated than by the State Office building blaze. Flames were visible for only short periods as firemen pumped thousands of gallons of water into the seven-story structure for over 30 hours, attempting to extinguish the stubborn fire on the seventh floor and mezzanine between the sixth and seventh floors.

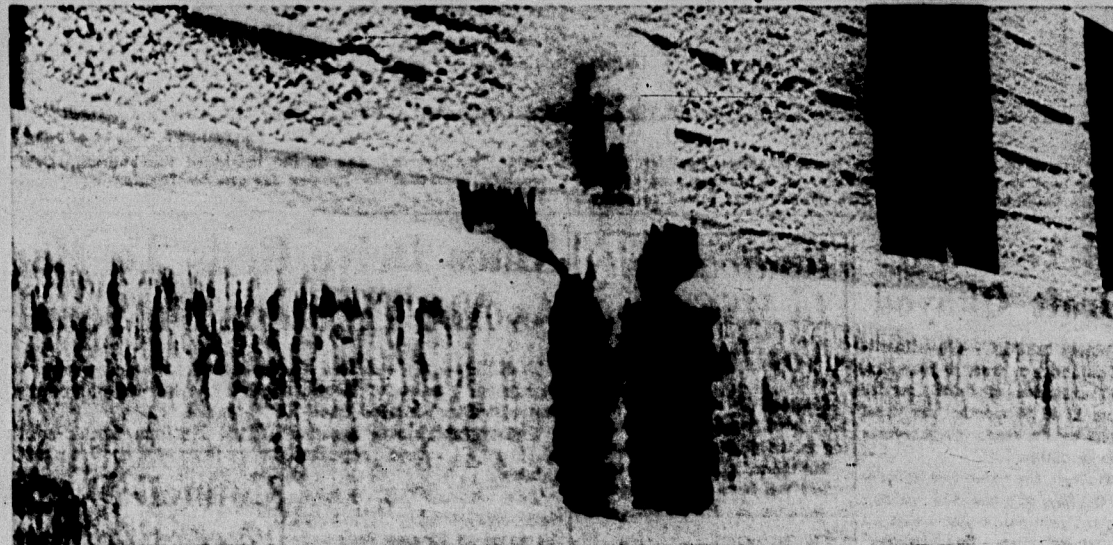
The \$4 million blaze brought equipment and firemen from Battle Creek, Flint, Jackson and Grand Rapids, in addition to pressing all of the 150 Lansing fire fighters into service. Water on all floors was between two and three inches deep and cascaded down stairways and elevator shafts, ruining priceless and irreplaceable state documents.

The near-zero weather sheathed the stone building and firefighting equipment with ice and the surrounding streets were choked with ice and water.

Firemen answered the first alarm at 12:30 Thursday afternoon. At 9 last night four hoses were still trained on the smoke-shrouded upper floor windows.

Photos By AL SELBY and ED SAYLE

Service Entrance . . . It Say's Here



The rear service entrance resembles a tabernacle carved from ice for a winter carnival. When these pictures were taken yesterday afternoon, firemen had been training hoses on the upper floors for more than 24 hours. Much of the water rolled down the sides

of the building and froze there. Intense smoke and heat prevented firemen from battling the blaze from the inside. They could only train hoses on upper floor windows and hope for the best.

Visiting Firemen



Grand Rapids firemen, part of four out-of-town fire companies battling the blaze, prepare to climb an extension ladder and train another

hose on the stubborn seventh floor. Out-of-town companies were summoned late Thursday afternoon and arrived with a police escort upon arrival.

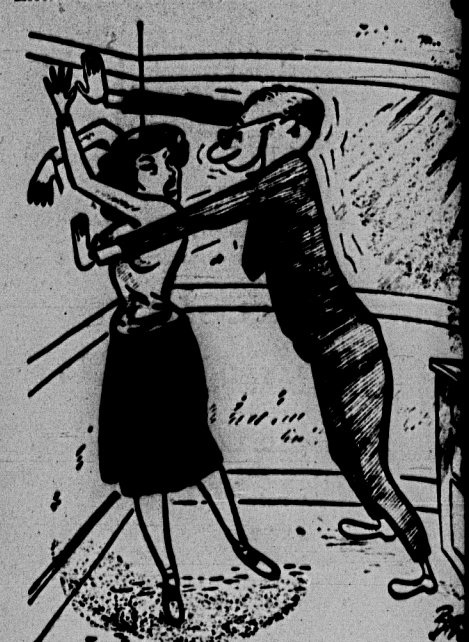
Everything's On Ice



From clouds, snowdrifts, frozen sidewalks—everything in the area—was covered by ice a few hours after the blaze started. The snowdrifts layed slightly above the same marks, making navigation difficult and halting the delivery

area of some firefighting equipment. Estimates of the amount of water pumped into the building ran up to 150,000 tons. Much of it leaked down to lower floors or cascaded down the sides of the building.

Little Men On Campus



"I suppose you'll take advantage of me because I can't give 'A's' to students with a smile."

Michigan State News

Entered as second-class matter under acts of March 1879 at Lansing, Mich. Office located on third floor of Union Building. The Associated Press is entitled exclusively to the use for all of the local news printed in this newspaper, as well as for all dispatches.

State News

Staff Members

Manager: Tom Nicholson
Editor: Steve Brandorfer
Night Editor: Al Ternes
Act'g Night Ed.: Dean Morton
Night Staff: Dick Krejco, Marilyn Galinske, Don Federman, Bob Gall, Mary Lee Morrison, Phil Gubby, Frank Butkiewicz
Ad. Staff: Jim Marron, Pat Colvin
Night Sports Ed.: Alex Lamm
Night Sports Staff: Bob Pope, Chuck Frederick

WESLEYAN METHODIST

East Michigan at
Kenneth E. Eyer, Pastor
10:00 a.m. — Sunday
11:00 a.m. — "L. L."
Singing (ap)
6:45 p.m. — Youth
7:30 p.m. — "Call for Love"
Wednesday — 7:30 p.m.
Prayer Meeting

Church

Notice

COLLEGE LUTHERAN CHURCH

Division and Ann Street
(Two Blocks North of Berkey Hall)
Sunday School — 9:30 a.m.
Services — 9:00 and 11:00 a.m.

"Personalities of the Past"
— St. Peter

Herbert C. Wolf, Pastor

Lutheran Student Association
1:00 p.m.

"Psychology in the Christian Faith" — Dr. Carl Frost

FIRST CHURCH OF CHRIST, SCIENCE

STATE THEATRE
Morning Service — 11
Sunday School — 11
Wed. Evening Service
In Reading Room
218 Abbott Road
Weekdays 10-6, Sat.

Christian Science Organ
at Michigan State (at
Meets Every Tuesday
7:15 p.m.

Chapel at People's Church

ST. THOMAS AQUINAS CATHOLIC CHURCH

405 ABBOTT ROAD
Sunday Masses — 8-9-10-11-12-12:30
Breakfast following first Mass
Holy Days of Obligation Masses — 7-8-9-12
Daily Masses — 6, 7 and 8 Stations — 12 noon Daily
Confessions — Saturday 4:00 to 5:30 and 7:30 to 9:00 p.m.
Daily Rosary for Students — 5:15 p.m.
Catholic Student Mission Feb. 11-18 Conducted by
Father Herbert Morris
Order of Services Sunday and Daily
4:00 and 7:30 Sermon and Benediction
Fr. J. V. MacKachlin, Pastor Fr. George R. Zabella
Fr. Paul De Rose, Asst. Pastor
Phone 5-3911

SPARTAN CHRISTIAN FELLOWSHIP

Thursday, Feb. 15 — 7:30 p.m.

Union Bldg., Room 33

Every Sunday 3:00 p.m.

Bible Study

(Bethel Manor — 803 E. Grand River)

EVERYONE WELCOME!

PEOPLES CHURCH

EAST LANSING

Interdenominational

C. Brandt Telf. Minister

Morning Worship

10:00 and 11:30

Sermon: "The Gospel of the Second Mile" Rev. Schramm

Church School 10:00

Pre-School Groups 10:30 & 11:30

Junior Church 10:30 & 11:30

Youth Groups 10:30 & 11:30

CAMPUS VESPERS 7:30 p.m.

"Now We Can Live A Better"

Dr. Clyde Holbrook

Phone 1-20

CHRISTIAN STUDENT FOUNDATION

— presents —

DR. CLYDE A. HOLBROOK

of Boston University

"THE BASIS OF CHRISTIAN LIVING"

People's Church

Sunday

February 12

7:00 P.M.

FIRST PRESBYTERIAN CHURCH

Ottawa St. and Grand St.

Sunday Morning 11 a.m.

Church School 9:30 a.m.

Breakfast 7:30 a.m. — 10:00 a.m.

"GOD'S BUILDING"

Spokane, Wash. — 10:00 a.m.

Rev. H. H. H. H. H.

Worship — 10:00 a.m.

United Christian Fellowship

Phone 1-20

UNITY CENTRE

605 West Grand Street

Sunday Morning 11:00

Monday and Wednesday

8:00 a.m.

Telephone 1-20

Rev. G. H. H. H.

Telephone 1-20

Affiliated with The

Community, Love

Unity

Unity

To Pace Thinclads



—STATE NEWS Photo by John George
Track meet are: Mickey Walter (top left); Capt. Warren (top right); Lee Jones (bottom left); and Don Makiel (bottom right).

ate Mermen Host Gophers Today

By GEORGE WEEKS

Michigan State's once-beaten swimming team takes on Minnesota tankers this afternoon at 3 in Jenison in the second annual meeting of the two splash

year's tussle the overwhelmed mermen, 68-25.

For Record

At the meet is figured the battle, the standout of the afternoon will be an exciting relay by a team of the national college

swimmers will be Al Murand, a champion from the University of Michigan, and Charles McCaffrey, a backstroke champion from the University of Michigan. Also, national high jumper, and the nation's outstanding school swimmer, will be the middle man

In Anchor

For the team, the freshmen, Dave Hoffman, Michigan, and Bud Wallen, Michigan, are all expected to go in the 100-yard dash. Ready to go in the 100-yard dash are Hal Shoup, Rod Mack Goodwin, and the carry Green and

in the breaststroke. Dave Patton and Hermann. Off the high of the Spartans will be the and Chuck Marshall.

TRACK SCHEDULE

100 yd. high jump, 100 yd. shot put, 100 yd. run, 100 yd. dash, 100 yd. exhibition 60 yard

100 yd. dash, 100 yd. high hurdles, 100 yd. exhibition, 70 yard hurdles, 100 yd. run, 100 yd. dash, 100 yd. low hurdles, 100 yd. relay

Track Team Ends Home Indoor Schedule Today

Clash With Penn State, Northwestern In Finale

By ALEX LAGGINS

Michigan State's track squad will make its last appearance of the indoor season before Spartan fans this afternoon at 1:30 in Jenison fieldhouse in a triangular clash with Penn State and Northwestern.

Breaking up his loaded relay combinations, Coach Karl Schlagenman will get his first indication of this year's team strength in individual events.

In their two previous appearances, State had all of its best talent in the relays. This will be the Spartans' first team scoring clash.

Mile Tops

The feature race of the afternoon shapes up in the mile with Capt. Warren, Druezi, Jim Koptford, and Wayne Scott of the Spartans meeting Don and Bill Ashenfelter, and Bob Freebairn of the Nittany Lions.

With both teams loaded in distance talent, the 800-yard run looks as another close race, with the Spartans' Don Makiel, Paul Shiek, and Walt Schoenagge matching speed with Penn State stars Bill Ashenfelter, Bob Parsons and John McCall and Northwestern's Art Macy and Emmett Bayles.

Fritts A Sure Bet

State's triple-event man Jesse Thomas and Joe Corbelli should be top contenders in the hurdle events with Northwestern's Bob Kieckert providing most of the opposition. Dick Henson should also get in the scoring act for State in the low hurdles.

The Nittany Lions' Vic Fritts, who recently high jumped 6' 8", looks like a sure bet to walk away with all the honors in this event and possibly a new fieldhouse record.

Soph's Pace State

Alex Andrials and Ray McKay, both sophomores, are Coach Schlagenman's main threats in giving Fritts any competition.

The two mile race should be another highly contested battle with Spartan hopes resting with John Walter, Jerry Zerbe, and Dick Roberts who will go against Penn State's Bill Ashenfelter, Jack Horner and John St. Clair and the Wildcats' John Byrnes.

Ingram, Henson in Dash
Art Ingram, who placed a surprising third in the 75 yard dash in the Michigan State relays, and Henson are expected to pace the Green and White in the short sprints.

Art Kutz of Northwestern looks as the top opposition.

Another close battle is expected in the 440 yard dash with Penn State's Bill Lockert the favorite. The Spartans will counter with Steve Little, Willie Williams, Les Jones and Shiek, who have been competing in the sprint runs in the relays.

Northwestern has a potent crew in Macy, Lou Nelson and Kurtz.

Lost One

The Nittany Lions have one dual meet under their belts al-

'Mural Schedule

BASKETBALL—

Tuesday, Feb. 13

Court 1

6:40 Phi EK vs. Beach Combers

7:25 Fiburgers vs. Hawaii Club

8:10 Blue Streaks vs. Bethel Manor

8:55 Yakley Bus Boys vs. Delray AC

9:40 Thermis vs. Delta Sig Pi

Court 2

6:40 Ties vs. Landon Bus Boys

7:25 Tinkle Terrors vs. Wiffen-pools

8:10 Pirates vs. Firehouse

8:55 YMCA vs. Outcasts

9:40 Califorms vs. RIDS

Court 3

6:40 Newman Club vs. Mac's Five

7:25 Motts Motts vs. Real

8:10 Medrich vs. Elsworth

8:55 Uhey vs. Bower

9:40 Sigma Nu vs. Theta Xi

BOWLING

Alleys 6:30

1-2 W. Shaw 1 vs. W. Shaw 7

3-4 W. Shaw 9 vs. W. Shaw 5

5-6 W. Shaw 10 vs. W. Shaw 3

7-8 W. Shaw 8 vs. W. Shaw 2

8:30

1-2 W. Shaw 6 vs. W. Shaw 4

3-4 Phillips 5 vs. Phillips 1

5-6 Phillips 9 vs. Phillips 3

7-8 Phillips 2 vs. Phillips 8

Play Northwestern

'Stop Ragelis', Cry Of Cagers Monday

By BILL MCGRAW

STATE NEWS Sports Editor

The high scoring Wildcats of Northwestern university, led by the Big Ten's leading point-getter, Ray Ragelis, will clash with the Michigan State basketball squad Monday night at Jenison fieldhouse.

Northwestern was knocked out of the running in the Western conference cage race this week when they were trimmed by Iowa, 73-55.

The Wildcats now have a conference record of two wins against three losses, and are in fourth place in the standings.

Won Last Game
The Spartans, who stunned Minnesota, 50-44, in their last contest, have a Big Ten record of three wins and five defeats.

Coach Pete Newell's squad can expect plenty of trouble from the Purple, especially center Ragelis. In his first eight games this season, the six-foot-four hook-shot artist poured in 165 points for a 20.6 average per game.

As for team scoring, the Wildcats lead the league here too, averaging over 21 points per game. Michigan State, essentially a defensive team, stalled Northwestern in the season opener, 67-62, at Evanston.

State's close defense and the added advantage of the home court should give the Spartans an

even break to defeat the point-producing Wildcats again. It will be a matter of stopping Ragelis and that's a tough assignment for any team.

Coach Newell stated that in order to keep up with the Wildcats' fast break offense and "full-court" defense, the Spartans will have to speed up their tempo of play.

The Green and White starting lineup will probably consist of Bob Carey, Ray Steffen, Gordie Stauffer, Bill Bower and Captain Jim Snodgrass. Newell hopes to keep both Carey and Steffen in action in order to give the team the extra height needed to stop Ragelis.

Northwestern Coach Harold Olsen will probably start Jake Fendley and Don Biasius at the forwards, along with guards Bernie Brady and Wally Horvath.

Foil Artist



AL TOTTE

Fencers Meet Chicago Today

By BILL COZENS

State's fencing squad, the only undefeated team of the 1951 winter Spartan schedule, swings into action today at 4:30 in Jenison gym against the University of Chicago swordsmen.

Coach Schmitter's team is out to annex its fourth straight win of the season and eleventh meet in two years without a defeat.

John Van Dagens leads the nine man squad with a 8-1 season record in the sabre class. Dwight Patton has compiled a 7-2 count.

In the epee, Bill Plyson has won seven out of nine bouts while Al Totte and Fred Freiheit have impressive 6-3 records in the foil events.

Last year the Spartans won 19-8. Two weeks ago the squad traveled 1,100 miles to gain important victories over Buffalo and Ohio State.

Late Sports Wire...

COLUMBUS, O.—(P)—The picture was a bit foggy and undeveloped, but Frank J. Lausche of Ohio appeared to be emerging as one of the top candidates for commissioner of baseball.

NEW YORK—(P)—Veteran right hander Allie Reynolds yesterday became the first of the "Big Four" of the New York Yankee pitching staff to sign his 1951 contract.

CHICAGO—(P)—The "big three" of the Big Ten basketball race is due to be trimmed to the "big two" tonight when Illinois and Wisconsin meet at Champaign, Ill., which will break their second-place deadlock. Each has a 6-1 record.

NOW SHOWING AT YOUR LANSING V. S. BUTTERFIELD THEATERS

MICHIGAN

Lansing, Michigan
Week of Feb. 10-16th
Saturday thru Friday
Errol Flynn and
Dean Stockwell
in
"KIM"
Technicolor

Sat.—"Operation Pacific"
with
John Wayne, Patricia Neal

LANSING

Lansing, Michigan
February 10th thru 13th
"ALCATRAZ ISLAND"
with
Ann Sheridan

"SAN QUENTIN"
with
Humphrey Bogart - Pat O'Brien

GLADNER

Lansing, Michigan
Saturday thru Tuesday
February 10-13
"THE MEN"
with
Marlo Brando
Teresa Wright

CAPITOL

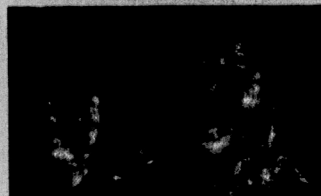
Lansing, Michigan
Last Times Today
ROY ROGERS in
"Trail of Robin Hood"
also
James Ellison-Evelyn Ankers
in "THE TEXAN MEETS
CALAMITY JANE"

Sun. and Mon.
BING CROSBY in
"MR. MUSIC"
also
JIMMY LYDON in
"HOT ROD"

WE DARE THEM ALL!

PHILIP MORRIS challenges any other leading brand to suggest this test

HUNDREDS OF THOUSANDS OF SMOKERS, who tried this test, report in signed statements that PHILIP MORRIS IS DEFINITELY LESS IRRITATING, DEFINITELY Milder!



1... Light up a PHILIP MORRIS Just take a puff—DON'T INHALE—and let the smoke come through your nose. Easy, isn't it? And NOW...

2... Light up your present brand Do exactly the same thing—DON'T INHALE. Notice that bite, that sting? Quite a difference from PHILIP MORRIS!

Other brands merely make claims—but PHILIP MORRIS invites you to compare, to judge, to decide for yourself! Try this simple test. We believe that you, too, will agree... PHILIP MORRIS is, indeed, America's FINEST Cigarettes!

NO CIGARETTE HANGOVER

means MORE SMOKING PLEASURE!



CALL FOR PHILIP MORRIS

COLLEGE INN ANNOUNCES NEW HOURS —

SUNDAY thru THURSDAY — 10:45 a.m. to 10 p.m. —

FRIDAY and SATURDAY — 10:45 a.m. to 12 p.m.

"J-POP" SPECIAL HOURS FRIDAY AND SATURDAY UNTIL 4:00 A.M.

MY VALENTINE

Sweet, isn't she? My, how we both enjoy those delicious, chocolaty TOOTSIE ROLLS! Try them yourself. At all candy counters.

Tootsie Roll

STATE

HURRY! LAST DAY!

Head AMBOTT • Lou COSTELLO in "KEEP 'em FLYING"

SUNDAY & MONDAY

State

HE WAS A TROUBLE GUY

Breaking Point

AMBER Novelty Cigarettes - Novel

TEEN "DEER"

Railroad Trainmen Fined For Walkout

CHICAGO (AP)—The Brotherhood of Railroad Trainmen, whose members have just ended a long and costly strike, was fined \$25,000 Friday for engaging in a similar "wild" walkout in December.

Federal Judge Michael L. Igoe found the union guilty of contempt of court in a hearing at Chicago.

The union faces similar charges for the second walkout of switch-

men which started Jan. 30. The government plans to start immediate hearings on the contempt charge it brought in the most recent walkout.

Walkout Collapsed

This walkout virtually collapsed Thursday after the army issued a "work or be fired" edict. All mail and express service has been restored, but it will take

some time to straighten out the freight tangle.

Judge Igoe held that the strikers acted in mass formation, but he discharged 40 individuals also on trial in the case. These included national BRT officers and local chairmen in the Chicago area.

Won't Impose Fine

He said he wouldn't impose the "astronomical fine" asked by the government—\$500,000 a day for each of the three days of the Dec. 13-16 strike—but that "the union must realize the great wrong they have done."

The union was fined on both criminal and civil charges but the total was \$25,000.

Restraint By Court Order

The union was restrained from striking by federal court order, but the switchmen still stayed away from work.

At the peak of the 10-day strike this year, an estimated 700,000 of the nation's two million freight cars were stranded in yards.

Full switch crews went to work on this backlog Friday.

To Take A Week

Even so, an army spokesman at Chicago, world's biggest rail hub, said it will take at least a week before conditions are back to normal.

Automobile plants still were running in low gear with 120,000 auto workers idle. A freight car shortage caused Ford to announce a 50 per cent cutback in operations at its huge Rouge plant in Michigan. Ford laid off 30,000 workers until Monday at Rouge.

GM Closes Plants

General Motors has closed 26 plants throughout the country and laid off 62,800 workers. But GM planned to call back 12,000 Chevrolet workers at Flint. The rest will be called back gradually.

General Motors has closed 26 plants throughout the country and laid off 62,800 workers. But GM planned to call back 12,000 Chevrolet workers at Flint. The rest will be called back gradually.

General Motors has closed 26 plants throughout the country and laid off 62,800 workers. But GM planned to call back 12,000 Chevrolet workers at Flint. The rest will be called back gradually.

General Motors has closed 26 plants throughout the country and laid off 62,800 workers. But GM planned to call back 12,000 Chevrolet workers at Flint. The rest will be called back gradually.

General Motors has closed 26 plants throughout the country and laid off 62,800 workers. But GM planned to call back 12,000 Chevrolet workers at Flint. The rest will be called back gradually.

General Motors has closed 26 plants throughout the country and laid off 62,800 workers. But GM planned to call back 12,000 Chevrolet workers at Flint. The rest will be called back gradually.

General Motors has closed 26 plants throughout the country and laid off 62,800 workers. But GM planned to call back 12,000 Chevrolet workers at Flint. The rest will be called back gradually.

General Motors has closed 26 plants throughout the country and laid off 62,800 workers. But GM planned to call back 12,000 Chevrolet workers at Flint. The rest will be called back gradually.

General Motors has closed 26 plants throughout the country and laid off 62,800 workers. But GM planned to call back 12,000 Chevrolet workers at Flint. The rest will be called back gradually.

General Motors has closed 26 plants throughout the country and laid off 62,800 workers. But GM planned to call back 12,000 Chevrolet workers at Flint. The rest will be called back gradually.

General Motors has closed 26 plants throughout the country and laid off 62,800 workers. But GM planned to call back 12,000 Chevrolet workers at Flint. The rest will be called back gradually.

General Motors has closed 26 plants throughout the country and laid off 62,800 workers. But GM planned to call back 12,000 Chevrolet workers at Flint. The rest will be called back gradually.

General Motors has closed 26 plants throughout the country and laid off 62,800 workers. But GM planned to call back 12,000 Chevrolet workers at Flint. The rest will be called back gradually.

General Motors has closed 26 plants throughout the country and laid off 62,800 workers. But GM planned to call back 12,000 Chevrolet workers at Flint. The rest will be called back gradually.

General Motors has closed 26 plants throughout the country and laid off 62,800 workers. But GM planned to call back 12,000 Chevrolet workers at Flint. The rest will be called back gradually.

General Motors has closed 26 plants throughout the country and laid off 62,800 workers. But GM planned to call back 12,000 Chevrolet workers at Flint. The rest will be called back gradually.

General Motors has closed 26 plants throughout the country and laid off 62,800 workers. But GM planned to call back 12,000 Chevrolet workers at Flint. The rest will be called back gradually.

General Motors has closed 26 plants throughout the country and laid off 62,800 workers. But GM planned to call back 12,000 Chevrolet workers at Flint. The rest will be called back gradually.

General Motors has closed 26 plants throughout the country and laid off 62,800 workers. But GM planned to call back 12,000 Chevrolet workers at Flint. The rest will be called back gradually.

General Motors has closed 26 plants throughout the country and laid off 62,800 workers. But GM planned to call back 12,000 Chevrolet workers at Flint. The rest will be called back gradually.

General Motors has closed 26 plants throughout the country and laid off 62,800 workers. But GM planned to call back 12,000 Chevrolet workers at Flint. The rest will be called back gradually.

General Motors has closed 26 plants throughout the country and laid off 62,800 workers. But GM planned to call back 12,000 Chevrolet workers at Flint. The rest will be called back gradually.

General Motors has closed 26 plants throughout the country and laid off 62,800 workers. But GM planned to call back 12,000 Chevrolet workers at Flint. The rest will be called back gradually.

General Motors has closed 26 plants throughout the country and laid off 62,800 workers. But GM planned to call back 12,000 Chevrolet workers at Flint. The rest will be called back gradually.

General Motors has closed 26 plants throughout the country and laid off 62,800 workers. But GM planned to call back 12,000 Chevrolet workers at Flint. The rest will be called back gradually.

General Motors has closed 26 plants throughout the country and laid off 62,800 workers. But GM planned to call back 12,000 Chevrolet workers at Flint. The rest will be called back gradually.

General Motors has closed 26 plants throughout the country and laid off 62,800 workers. But GM planned to call back 12,000 Chevrolet workers at Flint. The rest will be called back gradually.

Lost, Found Items Crowd Union Office

Student indifference to lost and found articles has resulted in an overload at the Union lost and found office, according to Theodore Bauer, manager of the lost and found.

Articles turned in range from 100 scarves to a diamond engagement ring. Besides 50 pairs of glasses and three baby spoons, there are many men's and women's coats and hats. An average of about one wallet a day is turned in.

When an item is turned in that has the owner's name on it, a postcard is sent to the owner.

Articles which are not called for within 90 days are given to the Salvation Army. American Volunteers society and the St. Cecilia society.

Notebooks are given to the Lansing public schools for distribution among the needy.

None of the lost articles are sold.

Dorm To Adopt War Child; Accepts TV Set

Residents of North Campbell dormitory have voted to sponsor a war child for one year. Lois Brown, president of the living unit, disclosed.

The women voted at a house meeting for one of three plans: a term paper, a television set, or the war child plan.

The \$100 cost of caring, clothing and feeding a child will be made up with \$100 taken from the treasury and individual donations. The program is being carried out through the Foster Parents Plan for War Children incorporated, of New York.

Mr. and Mrs. Edward Jacob, parents of Barbara Jacob, Romeo freshman who lives in North Campbell, donated the use of a television set to the living unit for the rest of the year after hearing of the dormitory's action.

Information about the foster parent plan was received by Miss Brown in a letter sent out by the group.

The money will be sent to the New York office as soon as it is collected, Miss Brown said. Residents will turn their contributions in to the counselor of their respective floors.

The money will be sent to the New York office as soon as it is collected, Miss Brown said. Residents will turn their contributions in to the counselor of their respective floors.

The money will be sent to the New York office as soon as it is collected, Miss Brown said. Residents will turn their contributions in to the counselor of their respective floors.

The money will be sent to the New York office as soon as it is collected, Miss Brown said. Residents will turn their contributions in to the counselor of their respective floors.

The money will be sent to the New York office as soon as it is collected, Miss Brown said. Residents will turn their contributions in to the counselor of their respective floors.

The money will be sent to the New York office as soon as it is collected, Miss Brown said. Residents will turn their contributions in to the counselor of their respective floors.

The money will be sent to the New York office as soon as it is collected, Miss Brown said. Residents will turn their contributions in to the counselor of their respective floors.

The money will be sent to the New York office as soon as it is collected, Miss Brown said. Residents will turn their contributions in to the counselor of their respective floors.

The money will be sent to the New York office as soon as it is collected, Miss Brown said. Residents will turn their contributions in to the counselor of their respective floors.

The money will be sent to the New York office as soon as it is collected, Miss Brown said. Residents will turn their contributions in to the counselor of their respective floors.

The money will be sent to the New York office as soon as it is collected, Miss Brown said. Residents will turn their contributions in to the counselor of their respective floors.

The money will be sent to the New York office as soon as it is collected, Miss Brown said. Residents will turn their contributions in to the counselor of their respective floors.

The money will be sent to the New York office as soon as it is collected, Miss Brown said. Residents will turn their contributions in to the counselor of their respective floors.

The money will be sent to the New York office as soon as it is collected, Miss Brown said. Residents will turn their contributions in to the counselor of their respective floors.

The money will be sent to the New York office as soon as it is collected, Miss Brown said. Residents will turn their contributions in to the counselor of their respective floors.

The money will be sent to the New York office as soon as it is collected, Miss Brown said. Residents will turn their contributions in to the counselor of their respective floors.

The money will be sent to the New York office as soon as it is collected, Miss Brown said. Residents will turn their contributions in to the counselor of their respective floors.

The money will be sent to the New York office as soon as it is collected, Miss Brown said. Residents will turn their contributions in to the counselor of their respective floors.

The money will be sent to the New York office as soon as it is collected, Miss Brown said. Residents will turn their contributions in to the counselor of their respective floors.

The money will be sent to the New York office as soon as it is collected, Miss Brown said. Residents will turn their contributions in to the counselor of their respective floors.

The money will be sent to the New York office as soon as it is collected, Miss Brown said. Residents will turn their contributions in to the counselor of their respective floors.

The money will be sent to the New York office as soon as it is collected, Miss Brown said. Residents will turn their contributions in to the counselor of their respective floors.

The money will be sent to the New York office as soon as it is collected, Miss Brown said. Residents will turn their contributions in to the counselor of their respective floors.

The money will be sent to the New York office as soon as it is collected, Miss Brown said. Residents will turn their contributions in to the counselor of their respective floors.

Busy Weekend Stated For Campus Churches

By CLAIRE COREN

Speakers, suppers, J-Hop breakfasts, a skating party, vesper services, and commemoration services for a student mission are on schedule this weekend for the campus religious groups.

Lutheran Student association will hear Dr. Carl Frost, associate professor of psychology, speak on "Psychology and the Christian" at 7:30 p.m. Sunday. A social hour will follow.

Arnold Williams, associate professor of English, will address the Canterbury club Sunday following a 6 p.m. supper at Canterbury center. He will speak on the development of Easter services from medieval drama.

A short service at 5:30 p.m. will precede the supper which is open to everyone, Jane Hubbard, president, announced.

J-Hop breakfasts and a skating party highlight Christian Student foundation's program for the weekend. Couples returning from the Friday J-Hop are invited to breakfast until 4 a.m. at the College house, Paul Worthington, president, said.

Saturday night couples will gather at the College house at 8 p.m. for the hike to the Bailey school rink for an ice skating party. Sunday night, there will be a supper hour followed by vesper services. Dr. Clyde Holbrook from Denison university will speak on living a better Christian life. A coffee hour will follow.

Newman Club Day. National Newman club day will be observed at Newman hall Sunday evening by commemoration services after the evening devotion. Father Morris from Grand Rapids will lead the services. Sunday is the first day of the seven-day student mission for Catholic students.

Brooks Student Store. Brooks Student Store, 414 W. State, is open from 10 a.m. to 6 p.m. daily. It carries a full line of student supplies and books.

Brooks Student Store. Brooks Student Store, 414 W. State, is open from 10 a.m. to 6 p.m. daily. It carries a full line of student supplies and books.

Brooks Student Store. Brooks Student Store, 414 W. State, is open from 10 a.m. to 6 p.m. daily. It carries a full line of student supplies and books.

Brooks Student Store. Brooks Student Store, 414 W. State, is open from 10 a.m. to 6 p.m. daily. It carries a full line of student supplies and books.

Brooks Student Store. Brooks Student Store, 414 W. State, is open from 10 a.m. to 6 p.m. daily. It carries a full line of student supplies and books.

Brooks Student Store. Brooks Student Store, 414 W. State, is open from 10 a.m. to 6 p.m. daily. It carries a full line of student supplies and books.

Brooks Student Store. Brooks Student Store, 414 W. State, is open from 10 a.m. to 6 p.m. daily. It carries a full line of student supplies and books.

Brooks Student Store. Brooks Student Store, 414 W. State, is open from 10 a.m. to 6 p.m. daily. It carries a full line of student supplies and books.

Brooks Student Store. Brooks Student Store, 414 W. State, is open from 10 a.m. to 6 p.m. daily. It carries a full line of student supplies and books.

Brooks Student Store. Brooks Student Store, 414 W. State, is open from 10 a.m. to 6 p.m. daily. It carries a full line of student supplies and books.

Brooks Student Store. Brooks Student Store, 414 W. State, is open from 10 a.m. to 6 p.m. daily. It carries a full line of student supplies and books.

Brooks Student Store. Brooks Student Store, 414 W. State, is open from 10 a.m. to 6 p.m. daily. It carries a full line of student supplies and books.

Brooks Student Store. Brooks Student Store, 414 W. State, is open from 10 a.m. to 6 p.m. daily. It carries a full line of student supplies and books.

Brooks Student Store. Brooks Student Store, 414 W. State, is open from 10 a.m. to 6 p.m. daily. It carries a full line of student supplies and books.

Brooks Student Store. Brooks Student Store, 414 W. State, is open from 10 a.m. to 6 p.m. daily. It carries a full line of student supplies and books.

Brooks Student Store. Brooks Student Store, 414 W. State, is open from 10 a.m. to 6 p.m. daily. It carries a full line of student supplies and books.

Brooks Student Store. Brooks Student Store, 414 W. State, is open from 10 a.m. to 6 p.m. daily. It carries a full line of student supplies and books.

Brooks Student Store. Brooks Student Store, 414 W. State, is open from 10 a.m. to 6 p.m. daily. It carries a full line of student supplies and books.

Brooks Student Store. Brooks Student Store, 414 W. State, is open from 10 a.m. to 6 p.m. daily. It carries a full line of student supplies and books.

Brooks Student Store. Brooks Student Store, 414 W. State, is open from 10 a.m. to 6 p.m. daily. It carries a full line of student supplies and books.

Brooks Student Store. Brooks Student Store, 414 W. State, is open from 10 a.m. to 6 p.m. daily. It carries a full line of student supplies and books.

Brooks Student Store. Brooks Student Store, 414 W. State, is open from 10 a.m. to 6 p.m. daily. It carries a full line of student supplies and books.

Brooks Student Store. Brooks Student Store, 414 W. State, is open from 10 a.m. to 6 p.m. daily. It carries a full line of student supplies and books.

Brooks Student Store. Brooks Student Store, 414 W. State, is open from 10 a.m. to 6 p.m. daily. It carries a full line of student supplies and books.

Brooks Student Store. Brooks Student Store, 414 W. State, is open from 10 a.m. to 6 p.m. daily. It carries a full line of student supplies and books.

Brooks Student Store. Brooks Student Store, 414 W. State, is open from 10 a.m. to 6 p.m. daily. It carries a full line of student supplies and books.

Brooks Student Store. Brooks Student Store, 414 W. State, is open from 10 a.m. to 6 p.m. daily. It carries a full line of student supplies and books.

Brooks Student Store. Brooks Student Store, 414 W. State, is open from 10 a.m. to 6 p.m. daily. It carries a full line of student supplies and books.

Brooks Student Store. Brooks Student Store, 414 W. State, is open from 10 a.m. to 6 p.m. daily. It carries a full line of student supplies and books.

Brooks Student Store. Brooks Student Store, 414 W. State, is open from 10 a.m. to 6 p.m. daily. It carries a full line of student supplies and books.

Crossword Puzzle

ACROSS
1. Russian river
2. Gave food to implement
3. Part of the body
4. Chief course
5. Pedal dict
6. Note of the scale
7. Masculine name
8. Light brown to beat
9. Obtain
10. Thick, viscous fluid
11. Any small pointed process
12. Minute parts
13. Archlike pronoun
14. Put into bottles

DOWN
15. Perform
16. Gave food to implement
17. Part of the body
18. Chief course
19. Pedal dict
20. Note of the scale
21. Masculine name
22. Light brown to beat
23. Obtain
24. Thick, viscous fluid
25. Any small pointed process
26. Minute parts
27. Archlike pronoun
28. Put into bottles

1 2 3 4 5 6 7 8 9 10 11
12 13 14 15 16 17 18 19 20 21 22
23 24 25 26 27 28 29 30 31 32 33
34 35 36 37 38 39 40 41 42 43 44
45 46 47 48 49 50 51 52 53 54 55
56 57 58 59 60 61 62 63 64 65 66
67 68 69 70 71 72 73 74 75 76 77
78 79 80 81 82 83 84 85 86 87 88
89 90 91 92 93 94 95 96 97 98 99
100 101 102 103 104 105 106 107 108 109 110
111 112 113 114 115 116 117 118 119 120 121
122 123 124 125 126 127 128 129 130 131 132
133 134 135 136 137 138 139 140 141 142 143
144 145 146 147 148 149 150 151 152 153 154
155 156 157 158 159 160 161 162 163 164 165
166 167 168 169 170 171 172 173 174 175 176
177 178 179 180 181 182 183 184 185 186 187
188 189 190 191 192 193 194 195 196 197 198
199 200 201 202 203 204 205 206 207 208 209
210 211 212 213 214 215 216 217 218 219 220
221 222 223 224 225 226 227 228 229 230 231
232 233 234 235 236 237 238 239 240 241 242
243 244 245 246 247 248 249 250 251 252 253
254 255 256 257 258 259 260 261 262 263 264
265 266 267 268 269 270 271 272 273 274 275
276 277 278 279 280 281 282 283 284 285 286
287 288 289 290 291 292 293 294 295 296 297
298 299 300 301 302 303 304 305 306 307 308
309 310 311 312 313 314 315 316 317 318 319
320 321 322 323 324 325 326 327 328 329 330
331 332 333 334 335 336 337 338 339 340 341
342 343 344 345 346 347 348 349 350 351 352
353 354 355 356 357 358 359 360 361 362 363
364 365 366 367 368 369 370 371 372 373 374
375 376 377 378 379 380 381 382 383 384 385
386 387 388 389 390 391 392 393 394 395 396
397 398 399 400 401 402 403 404 405 406 407
408 409 410 411 412 413 414 415 416 417 418
419 420 421 422 423 424 425 426 427 428 429
430 431 432 433 434 435 436 437 438 439 440
441 442 443 444 445 446 447 448 449 450 451
452 453 454 455 456 457 458 459 460 461 462
463 464 465 466 467 468 469 470 471 472 473
474 475 476 477 478 479 480 481 482 483 484
485 486 487 488 489 490 491 492 493 494 495
496 497 498 499 500 501 502 503 504 505 506
507 508 509 510 511 512 513 514 515 516 517
518 519 520 521 522 523 524 525 526 527 528
529 530 531 532 533 534 535 536 537 538 539
540 541 542 543 544 545 546 547 548 549 550
551 552 553 554 555 556 557 558 559 560 561
562 563 564 565 566 567 568 569 570 571 572
573 574 575 576 577 578 579 580 581 582 583
584 585 586 587 588 589 590 591 592 593 594
595 596 597 598 599 600 601 602 603 604 605
606 607 608 609 610 611 612 613 614 615 616
617 618 619 620 621 622 623 624 625 626 627
628 629 630 631 632 633 634 635 636 637 638
639 640 641 642 643 644 645 646 647 648 649
650 651 652 653 654 655 656 657 658 659 660
661 662 663 664 665 666 667 668 669 670 671
672 673 674 675 676 677 678 679 680 681 682
683 684 685 686 687 688 689 690 691 692 693
694 695 696 697 698 699 700 701 702 703 704
705 706 707 708 709 710 711 712 713 714 715
716 717 718 719 720 721