

Frosh-Sophs Renew  
Traditional Struggle  
On Red Cedar TodayTag O' War Across 100 Yard Rope  
To Decide Year's Superior Class

Meeting at opposite ends of a stout 100 yard rope across the mighty Red Cedar this afternoon at 4, men of the freshman and sophomore classes will determine for all time which class is the mightier.

In its fifth post war revival, the traditional melee will be held 150 yards below the railroad bridge near the gardens.

All men of both classes have been invited to participate. A coin was tossed to determine which bank of the river each class would defend.

The freshmen will defend the north side, while the sophomores will be on the south.

Police will be on hand to direct traffic. Dean S. E. Crowe has announced.

The college weather station defined yesterday afternoon that the depth of the river at the chosen site at noon was five feet but that there was possibility of a slight drop before the event.

Dr. Charles Holland of the college hospital stated, "We haven't

heard of any emergency provisions yet but we feel that we will be able to handle all casualties."

Each class has promised to have the other. Freshman captain Jim O'Connell stated that he has no fear of the disappointed upper classmen and Jim Hagen, leader of the sophs, scoffed at the idea of a fresh victory.

Referring to the sophomores as "unwashed stumblebums" in the local challenge extended in which, the freshmen went on to all their scholastic peers to be prepared for the beating of their

scholastic peers.

The sophomore reply expressed "the most sincere sympathy" to the freshmen in your coming "beating."

Intimations are that many of the administration big-wigs will be present to witness the battle.

Band Renews  
Spring Series

A large crowd shivered in the chill evening air last night as the MSU band renewed its spring concert series in the bandshell. Under the direction of Leonard Palmer, the 90-piece group played smoothly through a program of classical and popular music.

The first movement of Beethoven's "Moonlight Sonata" was among the best selections on the program, and the band showed admirably its soft, nostalgic qualities. Next's familiar, "Second Hungarian Rhapsody," and "Pomp and Circumstance" by Edward Elgar also received much applause.

Among the less serious numbers enjoyed by the audience were Goldmark's "Echo Waltz," played by a select trio, and Jerome Kern's "The Night We Said Goodbye" from "The Cat and The Fiddle."

The Ballet Suite from "The Beautiful Liar" by Tchaikovsky, and "The Beautiful Galop" were the most interesting and ambitious numbers played by the band, and both features were executed with exceptional ease.

MSU Elects Officers;  
Kelly, Fischer, Head  
Chapter For '47-48

At its final meeting of Spring term recently, the campus chapter of the Students for Democratic Action elected Doug Kelley, sophomore, and Bob Fischer, freshman, to serve as officers and vice-presidents for the coming year. Charles White, sophomore, is to be secretary. Kelly, Fischer, and White are all members of the Phi Kappa Tau chapter.

Tickets Left  
For Two 'Joan'  
Performances

Some seats still remain for tonight's and tomorrow night's performances of "Joan of Lorraine" and tickets may be bought at the Union ticket office or at the Fairchild theater box office before the show.

The term play, written by Maxwell Anderson, author of last term's production, "Winter Set," is running four nights to meet the great demand for tickets to college productions.

Directed by Harold Hansen, the drama features detailed and historically accurate scenery designed by Ben Wampler. The beautiful costumes and medieval palaces and dungeons of the period are reproduced on the Michigan State stage.

Starting with a bare stage on which a hard working cast is rehearsing a play about Joan of Arc, bits of scenery and costume are added throughout the drama until by the end of the final act the stage is completely set.

Frequently the actors themselves set up the scenery before the eyes of the audience. Hansen, in directing the play-within-a-play, has tried, especially in the first act, to make the audience feel that it is actually watching a rehearsal.

Phi Deltas Top  
Pledge Tests

Phi Delta Theta placed first with 93.3 in the Inter-Fraternity Council pledge test. Russ Wentworth, Huntington Woods junior, announced.

The Sigma Chi pledges followed with 93.9 and the Phi Kappa Tau pledges averaged 92.2. Remaining scores were P. Kappa Phi 91, Theta Chi 89, Delta Tau Delta 86.2, Kappa Sigma 85.8, Sigma Alpha Epsilon 85, Alpha Gamma Delta 83, Gamma Phi Beta 82.4, Lambda Chi 82.1, Psi Upsilon 81.5, Delta Sigma 75.5, Alpha Tau Omega 71.9, and Sigma Nu 71.7.

The test averages ranged higher than winter term scores. Wentworth said.

State Students Spin Yarns  
For Local School Children

By JEAN KEMPLE

Henry Langfellow had the right idea about children long ago when he wrote the poem, "The Children's Hour." Way back then, children gathered around, parents knees to listen to their stories.

In high school, radio serials hold the attraction and in college it's listening to friends' anecdotes, but children from four through twelve listen to the trials and tribulations of prince handsome and princess beautiful.

Starting with this idea in mind last year, Mrs. Moore Comper's formed a story-telling class for college students.

Mrs. Comper's class has now expanded to three sections and she is planning for a summer school course. Elementary education, speech and library majors are now getting first hand experience both in theory and telling stories to the younger set.

During the first class meeting of the course last term Mrs. Comper asked various students why they had chosen her course. A six-foot-four man stood up in the back row and announced that as

## Warren, Hayes Head Student Council

## Spartan Guards Parade In Holland

Basic ROTC Cadets Perform  
Before 500,000 At Festival

By DON BALL

Spartan Guard activities for this term reached a climax Saturday when the Guards paraded before more than a half-million spectators at the Holland Tulip festival.

Thirty-nine cadets marched in the unit, led by Honorary Cadet Captain Charles Grill, Chicago freshman, and Corps Sponsor Marian Walker, Niles freshman.

It was the only military drill team invited by the festival committee. Willard Wichers, festival manager, and the delegate from the Netherlands embassy complimented Captain Robert Ford, faculty advisor, on the appearance of the group.

During the afternoon ceremony the Guards were guests of honor at the band review. More than 1000 instruments were included in the bands which came from throughout the state.

In pre-war years MSC's Pershing Rifle company, national military honorary, had appeared annually in the festival. Last term, however, that group was reorganized into the Spartan Guards, a local honorary for ROTC basics.

Green officers' uniforms, distinguished by a green shoulder cord, were issued to members early this term. Insignia, depicting a flaming torch are worn on lapels.

Basic students in the past were required to maintain a 2-point military average for eligibility but higher requirements are now being set, according to Captain Ford.

In the future, he said, a straight "A" in military will be required, with a high all-college mark included. At the same time

State Students Spin Yarns  
For Local School Children

By JEAN KEMPLE

a prospective father in four months he wanted to learn how to entertain his future son.

The story-spinners visit public schools to tell stories and arouse interest for the meetings on campus. The young listeners are divided into three groups, four through six, seven through nine, and ten through twelve.

Donald Duck posters made from orange juice labels have been put in public schools by the five girls who are scheduled to tell nonsense tales and animal stories to the youngest group today. Their meeting begins at four fifteen at 263 Oakhill.

Wide-eyed and breathless youngsters are also expected by another group in 124 auditorium to listen to adventure stories. These are planned for the ten-through-twelve age level.

If Michigan State students find their interest dwindling in trigonometry or advanced American lit, they are always invited to attend a postcard hour in fantasyland with experienced story tellers grinning spitefully.

Ford Foremen  
Strike; Predict  
Assembly Halt

DETROIT, May 21 (AP)—Some 3,800 unionized foremen, spinning an unusual last-minute personal appeal from Henry Ford II, today walked out of three Detroit plants of the Ford Motor Co.

Operations continued uninterrupted as 85,000 production workers stayed at their machines, but the Foremen's Association of America predicted that assembly lines would be halted in a day and a half to two days.

The company said it intended to operate as long as possible but did not hazard a guess as to how long that would be.

Management reported tonight at the close of the day shift at the Rouge plant, employing 65,000 production workers, that "a few cars over scheduled" had been produced.

Eight hours after the strike began there were no apparent overtures from either side for settlement talks. An FAA spokesman said there was "no approach in any direction" and Ford reported similarly.

Ford's Mercury line meanwhile suffered from a supplies firm's labor dispute. The company said the Mercury would not be produced tomorrow because of a parts shortage growing out of a work stoppage at the Murray Body Corp. of America.

Jr. AVMA's Elect  
47-48 Officers

The Junior American Veterinary Medical Association selected officers recently for the 1947-48 school year.

Those elected to office are: Wesley E. Lichfield, East Lansing sophomore, president; Dale F. Fay, Mason sophomore, secretary; Warren Hagenbuch, Three Rivers sophomore, recorder; Treasurer, and William J. Hagenbuch, Gora sophomore, sergeant-at-arms.

One member from each class was chosen to represent that class on the executive board. Robert C. Bach will represent the sophomore, and Tom Carney the junior.

A King's Life!  
King Can't Reign  
Because Work  
Must Be Done

Being King for a day is at best a short reign—or even for three days, as is the case with the King of the Water Carnival, to be given May 28, 30 and 31.

Glenn Deibert, senior class president, who normally would be King of the Water Carnival, will miss his chance for regal glory this year, and all because he is a student in the college's police administration course.

For a degree in police work, a student must take 22 weeks of what is termed in-service training. Deibert's 22 week period of field work started April 7 and will continue through September 6. He will work with various police groups in the state, doing everything from road patrol work to secret service investigations.

Deibert's substitute will be Harold Rockwell, Grand Rapids, who is senior class treasurer. Queen is Peg Primodig, East Lansing, vice-president of the class. Deibert, a Detroit, hopes to be at State on Friday, June 6, to lead his class at commencement exercises.

Co-op Group Plans  
Additional Housing

With the approval and direction of the Inter Co-op Council, a group of MSC students from dormitories, rooming houses, and the quonsetts met in the Union annex recently to further plans for new co-op houses to open fall term.

Similar discussion groups have led to the establishment of Hedrick, Elsworth, Ulrey, and Bower co-op houses since the beginning of co-op in 1938, Jerry Smith, Lamont senior, said.

During the meeting three houses now available were considered. Don Randall, Niles sophomore, and J. P. Lathers, Howell junior, of Hedrick house were present to offer methods from their previous co-op experience in formulating a plan of action for the group. House financing, problems of renovation, and membership were discussed.

Before it meets next Tuesday in the Union, the initial planning group will work as housing and membership committee teams. All

Reagh, Eldredge  
Head Trailer Camp

Carl Reagh, Cass City junior, Abner Eldridge, Lansing junior, and Harold Fritz, East Lansing sophomore, were elected president, treasurer and secretary, respectively, of the MSC Trailer Council Monday afternoon.

Richard Beckus, Lansing sophomore, and Virgil St. Peter, Vassar sophomore, were named co-chairmen of the social and recreation committee at the same meeting.

Ag Field Day  
To Pack Fun  
Into EventsPrize On Display  
In Ag Hall Today

The annual Agricultural Field day is scheduled tomorrow afternoon and evening. Afternoon events will take place in the pavilion, with the evening entertainment centralized in the band shell.

Students in the Agriculture division are excited from classes in order to participate by seeing their instructors, stated Byron Carpenter, president of the Agricultural council, and Dean Anthony of that School has sent letters to the other Schools asking them to cooperate.

The afternoon program will start with judging contests at 1 p.m., and these will run until 5:30 p.m. A barbecue luncheon served by members of Agricultural council to all who have entry tickets will follow.

The evening's entertainment will be presented in the band shell.

Featured on the program will be a tug-of-war between the freshman and senior classes in the Agriculture division. Robert Curry, Almont, has been chosen to act as captain for the seniors while Ed Foster, Benton Harbor, will lead the opposing freshmen.

Also scheduled are canoe tilting and log billing by the Foresters.

Other attractions of the evening will be the cowmilking contest.

Special meeting of all Water Carnival entries Thursday, at 7:30 p.m. in 103 Union Annex. Chairmen of all organizations participating in the 1947 Water Carnival are asked to attend.

Presentations of awards will be made by E. L. Anthony, dean of the School of Agriculture. Some of the prizes offered are now on display in front of the Dean's office in Agricultural hall, Jim Burnett, Ypsilanti junior, awards chairman, said.

Also on the afternoon's schedule are horse shoe pitching and softball games.

Tickets for the Field day are now available from all members of Agricultural council.

In case of bad weather, both the barbecue and evening program will be held in the Pavilion.

Jeffords Appointed  
As New SecretaryTwo New Representatives Named  
To Group At Annual Banquet

By JIM MCCARTNEY

Jerry Warren, Bay City junior, Jack Hayes, Detroit sophomore, and Helen Jeffords, Detroit junior, were elected student council officers for the coming year at the traditional banquet for incoming representatives last night.

Warren, the new president, has served on the council for one year, heading several committees, among them the committee on school spirit. He was elected to the council from the East Lansing district.

A major in Public Administration, he served three years in the Army Air forces as a gunner. He is 23 years old and affiliated with the Sigma Nu fraternity.

John Hayes is the new vice president. His major is pre-law. He began college at the University of Michigan in 1943.

At the present time he is active in the Pre-Law club, as treasurer, and is one of the candidates going into the finals for the king of the March Gras. He is a member of Sigma Chi fraternity and was elected from the Snyder hall district.

Taking over as secretary is Helen Jeffords. Miss Jeffords majors in business administration, has been active in the Women's Co-op league, and was elected from the Co-op North hall district.

Warren Varotus. According to the newly adopted constitution, Warren automatically vacates his position as a representative from the East Lansing district. Replacing him on the council Tom that district will be Ted Brundage, East Lansing junior, who obtained the next highest number of votes.

John Cox, retiring head of the council elections committee, recommended that due to an error, the married students district is underrepresented on the new council. He suggested that Bob Fisher, Bloomington junior, who obtained the third highest number of votes in the election, be seated as a representative. His recommendation was approved.

Political Debate. Debate arose concerning the admission of the Young Republicans club as an official campus organization. Jim Schoener, Muskegon junior, presented the case for the club. Discussion centered around the feasibility of allowing political groups with definite party affiliations to organize.

Bill Jackson moved that the matter be postponed until fall term. The motion was carried.

In the course of the discussion four campus organizations were accused of having entered into partisan politics. The organizations were the American Legion, the American Veterans Committee, the Spartan Citizens committee, and the Student for Democratic Action.

By presenting a wide variety of informative and educational articles the "Michigan Out-Of-Doors" will coordinate all these interests.

Le Tricolore To Present  
French Plays Monday

The first all-French entertainment ever offered at MSC will be presented Monday night in the Music auditorium under the auspices of the French Club.

Le Tricolore, as the group is officially called, is a student organization designed to promote, through social activities and discussion in French, an increasing interest in the French language and country.

Monday night's program, which is the climax of the year's activities, is being produced with the help of first year French students and music majors.

All students and the general public are invited to attend the entertainment.

Highlighting the program will be two one-act plays written by contemporary French playwrights. The first, "Rosalie," by Max Maury is under the direction of Mme. Miller of the foreign language department.

Consists of three characters: Monsieur Bol and Beverly Sedwick, Ann Arbor sophomore, as Mme. Bol.

George Jopaus, Nice, France, graduate student, is directing "Le Peetre Enigme," the second

NEWS  
IN BRIEF

## Congress O.K.'s Relief Bill

WASHINGTON, May 21 (AP)—Congress gave final approval today to the \$50,000,000 foreign relief program, and Undersecretary of State Dean Acheson called for continued emergency loans and grants to foreign nations in 1948 and 1949.

## Mrs. Truman Given Chance

GRANDVIEW, Mo., May 21 (AP)—President Truman's 66-year-old mother began passive convalescence in a new mechanical bed tonight after the White House physician gave her a "chance" for recovery.

## Seven Killed In Crash

CHAMPAIGN, Ill., May 21 (AP)—Seven soldiers, two of them top army flying officers, were killed last night in the crash of a B-25 bomber in a cornfield during a thunderstorm.







# Freshman Stars Key To Bright Future For Spartan Baseball

## Four Of Five Top Moundsmen Have Three Years Remaining

By RUD LAWSON

With Michigan State's varsity baseball squad taking a day yesterday due to the postponement of the game with Wayne at Detroit, the hot stove leaguers are taking over for a day.

Prime subjects for hot stove prattle are the prospects for another year. Backers of the team always have high hopes for the future. The targets of the hot stove leaguers are the targets of the hot stove leaguers, and are expected to answer the question about next year.

Some fans are more or less in the latter category, and since John Kobs is enjoying an unusually successful season, being supported and officials are always asking Kobs how his

# Rain Hates Links Match With Wayne

By JACK O'HARA

Deep puddles on the Walnut Hills fairways forced cancellation of yesterday's scheduled golf match between Michigan State and Wayne University. The match was postponed to Wednesday.

The Tartars were notified of the decision early yesterday and did not make the trip to East Lansing. MSC golf coach Ben Van Alstyne will slate several practice matches for his squad this week, in an effort to field the best team possible Wednesday.

This dual match will be the last intercollegiate meet for the Spartan linksmen with only the NCAA clash at Ann Arbor on June 22 remaining.

The State squad has been hindered by bad weather throughout the season, and Jupiter Pluvius has been working overtime. Apparently, the Vannem are getting used to it, if the match at Red Run Saturday can be considered any indication. The match was played in semi-darkness, during a downpour.

In this match with the University of Detroit two members of the team equalled par for their best medal scores of the season. They were Bob Tansey and Jack Gale, who came through with a pair of 72's.

# DOWN THE SIDELINES

By CHUCK STRATTARD

AN all morning rain cancelled yesterday's game with Wayne at Detroit which was to have been the Spartan's second encounter with the Tartars in three days.

The sun was shining brightly by 2 o'clock in the afternoon when we met John Kobs as he stood wearing his favorite brown business suit watching a tractor level the dirt near gate No. 2 at Old College field.

It's doubtful his line of thought was following that tractor though before we interrupted his view of the proceedings and got to what would naturally follow, a baseball gab session.

In fact we soon learned he was pondering over the tremendous task confronting his baseballers who now have anything but the enviable job of playing five games in eight days beginning with Friday's return engagement with Notre Dame at South Bend.

If you don't think the veteran baseball coach has anything to think about these days, take a look at that lineup of opponents the Spartans have waiting for them beginning with the Irish.

After Friday's set-to in Indiana, Kobs will bring his team home for Tuesday's big meeting with Michigan at Ann Arbor.

Thursday State will go to Detroit to make up yesterday's postponement with the Tartars, then follow successive single games with Wisconsin next Friday (Decoration day), and Saturday.

By now the Spartans are making no secret that they're gunning for the NCAA invitational but just as every other outstanding college team in the area.

So here's the real stretch drive for Michigan State and the road ahead is not exactly a bed of roses for the Kobsians. It's a fact State can ill afford to lose any one of those games, yet who will stand up and shout "it shouldn't have happened" if they do.

Of the five, Wayne appears to be the least dangerous as the Spartans round the backstretch, but the Tartars may be plenty tough on their home field. A for the rest of them, Notre Dame, Michigan and Wisconsin, they're

# Netters Risk Home Mark Against Michigan Today

By JACK WESTON

State's tennis team, undefeated on its home courts this season, will risk its perfect record against Michigan at 2:30 this afternoon.

The Spartans dropped an earlier match to the Wolverines at Ann Arbor, by a 6-3 score, as Michigan swept the first three singles matches.

Couch Jake Dahlgren's squad, going into today's match with a 9-5 record for a .643 percentage, will play Ohio State here tomorrow and finish the regular season against Western Michigan, Tuesday, also on the home courts.

In the Ann Arbor defeat, Al Reynolds, Jack Shingleton, Bob Chuck, and Mickey Elliot dropped singles points, and the first and third doubles combinations lost their matches.

Lineup Suggested: Reynolds will have a chance to even his record against Michigan's Andy Paton today, but the remainder of the Spartan lineup will probably be juggled for singles play.

Paton topped Reynolds 6-2, 9-7 in the first match, but only after the State player had "won" the second set on a perfect placement shot which the Michigan scorer called out.

Lanky Fred Otto, at No. 2 for the Wolverines, stopped Jack Shingleton in three sets, in the first encounter, but Couch Dahlgren may move either Roger Cessna or Bob Malaga up to second position.

Malaga, who won at No. 3 at Illinois Monday, took one of the

Shingleton and Chuck may move down to four and five today, followed by either Mickey Elliot or Tom Martin. Elliot lost to Michigan's Hal Cook in straight sets at Ann Arbor.

Doubles teams for State will remain unchanged: Reynolds and Cessna, the top duo, is in the midst of a losing streak but Dahlgren figures the boys are due to get some of the breaks that make the difference in the close matches.

Chuck and Shingleton, victors in the first meeting of the teams, are set for second, and Malaga will team with either Martin or Elliot for the third combination.

# Phi Delt Wins IFC Track Crown With 34 Points

By WALLY SCHRAMM

Phi Delta Theta added 15 1/2 points to their leading first-day score of 19 to win the 1947 inter-fraternity track meet with a total of 34 1/2 points yesterday.

Alpha Tau Omega moved up from third Tuesday to second in the final tally with 28 1/2 points. Sigma Nu, defending champion, scored 31 1/2 points yesterday to finish third in the final tally with 14 1/2.

Fourth place went to Sigma Chi with 14 1/2 points. Lambda Chi Alpha wound up with 11 1/2 points, followed by Tau Kappa Epsilon, Sigma Alpha Epsilon, and Alpha Epsilon Iota. Phi Delta Theta led.

Individual scoring honors were claimed by AT&E Chuck Proctor, who registered 10 points. Proctor won the 200 yard dash, the 400 yard dash, the 800 yard dash, the 1600 yard dash, the 3200 yard dash, the 6400 yard dash, the 12800 yard dash, the 25600 yard dash, the 51200 yard dash, the 102400 yard dash, the 204800 yard dash, the 409600 yard dash, the 819200 yard dash, the 1638400 yard dash, the 3276800 yard dash, the 6553600 yard dash, the 13107200 yard dash, the 26214400 yard dash, the 52428800 yard dash, the 104857600 yard dash, the 209715200 yard dash, the 419430400 yard dash, the 838860800 yard dash, the 1677721600 yard dash, the 3355443200 yard dash, the 6710886400 yard dash, the 13421772800 yard dash, the 26843545600 yard dash, the 53687091200 yard dash, the 107374182400 yard dash, the 214748364800 yard dash, the 429496729600 yard dash, the 858993459200 yard dash, the 1717986918400 yard dash, the 3435973836800 yard dash, the 6871947673600 yard dash, the 13743895347200 yard dash, the 27487790694400 yard dash, the 54975581388800 yard dash, the 109951162777600 yard dash, the 219902325555200 yard dash, the 439804651110400 yard dash, the 879609302220800 yard dash, the 1759218604441600 yard dash, the 3518437208883200 yard dash, the 7036874417766400 yard dash, the 14073748835532800 yard dash, the 28147497671065600 yard dash, the 56294995342131200 yard dash, the 112589990684262400 yard dash, the 225179981368524800 yard dash, the 450359962737049600 yard dash, the 900719925474099200 yard dash, the 1801439850948198400 yard dash, the 3602879701896396800 yard dash, the 7205759403792793600 yard dash, the 14411518807585587200 yard dash, the 28823037615171174400 yard dash, the 57646075230342348800 yard dash, the 115292150460684697600 yard dash, the 230584300921369395200 yard dash, the 461168601842738790400 yard dash, the 922337203685477580800 yard dash, the 1844674407370955161600 yard dash, the 3689348814741910323200 yard dash, the 7378697629483820646400 yard dash, the 14757395258967641292800 yard dash, the 29514790517935282585600 yard dash, the 59029581035870565171200 yard dash, the 118059162071741130342400 yard dash, the 236118324143482260684800 yard dash, the 472236648286964521369600 yard dash, the 944473296573929042739200 yard dash, the 1888946593147858085478400 yard dash, the 3777893186295716170956800 yard dash, the 7555786372591432341913600 yard dash, the 15111572745182864683827200 yard dash, the 30223145490365729367654400 yard dash, the 60446290980731458735308800 yard dash, the 120892581961462917470617600 yard dash, the 241785163922925834941235200 yard dash, the 483570327845851669882470400 yard dash, the 967140655691703339764940800 yard dash, the 1934281311383406679529881600 yard dash, the 3868562622766813359059763200 yard dash, the 7737125245533626718119526400 yard dash, the 15474250491067253436239052800 yard dash, the 30948500982134506872478105600 yard dash, the 61897001964269013744956211200 yard dash, the 123794003928538027489912422400 yard dash, the 247588007857076054979824844800 yard dash, the 495176015714152109959649689600 yard dash, the 990352031428304219919299379200 yard dash, the 1980704062856608439838598758400 yard dash, the 3961408125713216879677197516800 yard dash, the 7922816251426433759354395033600 yard dash, the 15845632502852867518708790067200 yard dash, the 31691265005705735037417580134400 yard dash, the 63382530011411470074835160268800 yard dash, the 126765060022822940149670320537600 yard dash, the 253530120045645880299340641075200 yard dash, the 507060240091291760598681282150400 yard dash, the 1014120480182583521197362564300800 yard dash, the 2028240960365167042394725128601600 yard dash, the 4056481920730334084789450257203200 yard dash, the 8112963841460668169578900514406400 yard dash, the 16225927682921336339157801028812800 yard dash, the 32451855365842672678315602057625600 yard dash, the 64903710731685345356631204115251200 yard dash, the 129807421463370690713262408230502400 yard dash, the 259614842926741381426524816461004800 yard dash, the 519229685853482762853049632922009600 yard dash, the 1038459371706965525706099265844019200 yard dash, the 2076918743413931051412198531688038400 yard dash, the 4153837486827862102824397063376076800 yard dash, the 8307674973655724205648794126752153600 yard dash, the 16615349947311448411297588253504307200 yard dash, the 33230699894622896822595176507008614400 yard dash, the 66461399789245793645190353014017228800 yard dash, the 132922799578491587290380706028034457600 yard dash, the 265845599156983174580761412056068915200 yard dash, the 531691198313966349161522824112137830400 yard dash, the 1063382396627932698323045648224275660800 yard dash, the 2126764793255865396646091296448551321600 yard dash, the 4253529586511730793292182592897102643200 yard dash, the 8507059173023461586584365185794205286400 yard dash, the 17014118346046923173168730371588410572800 yard dash, the 34028236692093846346337460743176821145600 yard dash, the 68056473384187692692674921486353642291200 yard dash, the 136112946768375385385349842972707284582400 yard dash, the 272225893536750770770699685945414569164800 yard dash, the 544451787073501541541399371890829138329600 yard dash, the 1088903574147003083082798743781658276659200 yard dash, the 2177807148294006166165597487563316553318400 yard dash, the 4355614296588012332331194975126633106676800 yard dash, the 8711228593176024664662389950253266213353600 yard dash, the 17422457186352049329324779900506532266707200 yard dash, the 34844914372704098658649559801013064533414400 yard dash, the 69689828745408197317299119602026128666828800 yard dash, the 139379657490816394634598239204052257333657600 yard dash, the 278759314981632789269196478408104514667315200 yard dash, the 557518629963265578538392956816209029334630400 yard dash, the 1115037259926531157076785913632418058669260800 yard dash, the 2230074519853062314153571827264836117338521600 yard dash, the 446014903970612462830714365452967223667703200 yard dash, the 892029807941224925661428730905934447335406400 yard dash, the 1784059615882449851322857461811868894670812800 yard dash, the 3568119231764899702645714923623737789341625600 yard dash, the 7136238463529799405291429847247475578683251200 yard dash, the 14272476927059598810582859694494951157366502400 yard dash, the 28544953854119197621165719388989902314733004800 yard dash, the 57089907708238395242331438777979804629466009600 yard dash, the 114179815416476790484662877555959609258932019200 yard dash, the 228359630832953580969325755111919218517864038400 yard dash, the 456719261665907161938651510223838437035728076800 yard dash, the 913438523331814323877303020447676874071456153600 yard dash, the 1826877046663628647754606040895353748142912307200 yard dash, the 3653754093327257295509212081790707496285824614400 yard dash, the 7307508186654514591018424163581414992571649228800 yard dash, the 1461501637330902918203684832716282998514328457600 yard dash, the 2923003274661805836407369665432565997028656915200 yard dash, the 5846006549323611672814739330865131994057313830400 yard dash, the 11692013098647223345629478661730263988114626660800 yard dash, the 23384026197294446691258957323460527976229253321600 yard dash, the 46768052394588893382517914646921055952458506643200 yard dash, the 93536104789177786765035829293842111904917013286400 yard dash, the 187072209578355573530071658587684223809834026572800 yard dash, the 374144419156711147060143317175368447619668053145600 yard dash, the 748288838313422294120286634350736895239336106291200 yard dash, the 1496577676626844588240573268701473790478672212582400 yard dash, the 2993155353253689176481146537402947580957344425164800 yard dash, the 5986310706507378352962293074805895161914688850329600 yard dash, the 11972621413014756705924586149611790323829377700659200 yard dash, the 23945242826029513411849172299223580647658755401318400 yard dash, the 47890485652059026823698344598447161295317510802636800 yard dash, the 95780971304118053647396689196894322590635021605273600 yard dash, the 191561942608236107294793378393788645181270043210547200 yard dash, the 383123885216472214589586756787577290362540086421094400 yard dash, the 766247770432944429179173513575154580725081672842188800 yard dash, the 1532495540865888858358347027150309161450163345684377600 yard dash, the 3064991081731777716716694054300618322900326691368755200 yard dash, the 6129982163463555433433388108601236645800653382737510400 yard dash, the 12259964326927110866866776217202473291601306765475020800 yard dash, the 24519928653854221733733552434404946583202613530950041600 yard dash, the 49039857307708443467467104868809893166405227061900083200 yard dash, the 98079714615416886934934209737619786332810454123800166400 yard dash, the 196159429228833773869868419475239572665620908247600332800 yard dash, the 392318858457667547739736838950479145331241816495200665600 yard dash, the 78463771691533509547947367790095829066248363299041331200 yard dash, the 156927543383067019095894735580191658132496726598082662400 yard dash, the 313855086766134038191789471160383316264993453196165324800 yard dash, the 627710173532268076383578942320766632529986906392330649600 yard dash, the 1255420347064536152767157884641533265059973812784661299200 yard dash, the 25108406941290723055343157692830665301199476255693225600 yard dash, the 50216813882581446110686315385661330602398952511386451200 yard dash, the 100433627765162892221372630771322601207797905022772902400 yard dash, the 200867255530325784442745261542645202415595810045545804800 yard dash, the 40173451106065156888549052308529040483119162009109169600 yard dash, the 80346902212130313777108104617058080966238324018218339200 yard dash, the 160693804424260627554216209234116161932476648036436678400 yard dash, the 321387608848521255108432418468232323864953296072873356800 yard dash, the 642775217697042510216864836936464647729906592145746713600 yard dash, the 1285550435394085020433729673872929295499813184291493427200 yard dash, the 2571100870788170040867459347745858590999626368582986854400 yard dash, the 5142201741576340081734918755491717181999252737165973708800 yard dash, the 1028440348315268016346983751098343436399850547433194737600 yard dash, the 2056880696630536032693967502196686872799701094866389475200 yard dash, the 4113761393261072065387935004393373745599402189732678950400 yard dash, the 8227522786522144130775870008786747491198804379465357900800 yard dash, the 1645504557304428826155174001757349498239760875893071581600 yard dash, the 3291009114608857652310348003514698996479521751786143163200 yard dash, the 6582018229217715304620696007029397992959043503572286326400 yard dash, the 13164036458435430609241392001405795985918087007144572652800 yard dash, the 263280729168708612184827840028115919718361740142891452800 yard dash, the 526561458337417224369655680056231839436723480285782905600 yard dash, the 1053122916674834448739311360011246368873446965711565811200 yard dash, the 2106245833349668897478622720022492737746893131423122400 yard dash, the 4212491666699337794957245440044985555493786262846244800 yard dash, the 8424983333398675589914490880089971110987572525692489600 yard dash, the 16849966666797351179828981760179942221975145051384979200 yard dash, the 33699933333594702359657963520359884443950290102769958400 yard dash, the 67399866667189404719315927040719768887900580205539916800 yard dash, the 134799733334378809438631854081435377775801160411079833600 yard dash, the 269599466668757618877263708162870755551602200822159667200 yard dash, the 539198933337515237754527416325741511103204401644313334400 yard dash, the 1078397866675030475509054832651483022206408803288626668800 yard dash, the 2156795733350060951018109665302966044412817766577253337600 yard dash, the 4313591466700121902036219330605932088825635531154506675200 yard dash, the 8627182933400243804072438661211864177651271062309013350400 yard dash, the 17254365866800487608144877322423728355302542124618026700800 yard dash, the 34508731733600975216289754644847456710605084249236053401600 yard dash, the 6901746346720195043257950928969491342121016849847310683200 yard dash, the 13803492693440390086515901857938982684242033699694621366400 yard dash, the 27606985386880780173031803715877965368484067399389242732800 yard dash, the 55213970773761560346063607431755930736968134798778485465600 yard dash, the 110427941547523120692127214863511871473936269597556970931200 yard dash, the 220855883095046241384254429727023742947872539195113941862400 yard dash, the 441711766190092482768508859454047485895745078390227883724800 yard dash, the 883423532380184965537017718908094971791490156780455767449600 yard dash, the 1766847064760369931074035437816189943582980313560911534899200 yard dash, the 3533694129520739862148070875632379887165960627121823069798400 yard dash, the 7067388259041479724296141751264759774331921254243646139596800 yard dash, the 14134776518082959448592283502529519548663842508487292279193600 yard dash, the 28269553036165918897184567005059039097327685016974584558387200 yard dash, the 5653910607233183779436913401011807819465537003394916911774400 yard dash, the 11307821214466367558873826802023615638931074006789833823548800 yard dash, the 22615642428932735117747653604047231277862148013579667647097600 yard dash, the 4523128485786547023549530720



## Science And Arts Vets Gain In Grade Averages Over Pre-War Level In Survey

Veterans, as a whole, who have resumed their studies in the school of science and arts are making significantly better grades now than before the war, a recent survey conducted by Dean L. C. Emmons pointed out.

### Voices Threat



Dr. James E. Newman (above) American military governor of Rome told the German people (May 16) he would invade the death penalty if necessary to curb the demonstrations resulting from food shortages.

AP Wirephoto

### Forestry Sets Up Alumni Group

Local alumni graduate and former students of the Forestry School met in the Forestry School building to set up an alumni organization.

The group was addressed by Gen. Samuel M. Jones, who said he believed the Forestry School was the best place to train a forester.

Students were asked to pay \$1.00 to join the group. The group will meet regularly to discuss forestry problems and to promote the Forestry School.

## YARDBIRD'S CORNER

Air Corps officers, listed and non-rated, may request a tour of active duty during summer vacation. Colonel John L. Whitelaw, 1037th commandant, announced yesterday.

Additional funds have been allocated for active duty of air reserve officers, and shortage of time demands that applicants send in their request for duty immediately, he stated.

Applications should contain references showing current activity, appointment in the air reserve, and stating that the applicant is not drawing a pension from any other source.

Large quantities of surplus machine tools will be donated to Michigan schools, the War Relocation Administration announced yesterday.

Yets holding \$511 policies and moving out of the Michigan-Ben-Hurick area should inform the AA branch insurance office at change of address, name and policy number.

Police officers, under the new law, should inform the AA branch insurance office at change of address, name and policy number.

### U. of M. Dean To Speak To Phi Kappa Phi

Dr. Howard W. Henshaw, dean of the University of Michigan, will speak to the Phi Kappa Phi chapter at the University of Michigan.

The Phi Kappa Phi chapter at the University of Michigan will meet in the Phi Kappa Phi building on May 23.

### Business Opportunity!!

This Part-Time Business Will Pay Your Way Through School

Only 4 hours per week. Present owner nets \$25.00 to \$30.00 weekly. Full price \$40.00.

For Details Call RUSSELL RUNQUEST EAST LANSING REALTY, Realtors

## Lansing Naval Reserve Plans To Celebrate Reserve Week

Battalion 9-23, Lansing's organized naval reserve unit, will hold open house in West Junior high school at 1 p.m. Sunday. Lt. Jay Brunner, naval public information officer, announced yesterday.

The meeting is in coordination with naval installations throughout the country in celebration of Naval Reserve Week, Brunner said.

Faculty and students are operating a booth in the lounge across from the Union grill throughout the week, with information and application forms on the new reserve plan. He added that a new color film is being shown throughout today in the faculty luncheon room of the Union.

In Detroit, the Grosse Ile Naval station has scheduled tours for Sunday throughout the installation. Films, radar, and ground training devices will be shown. Formation flying and aerial maneuvers by naval aircraft will highlight the program.

These activities conclude the last week of recruiting veterans and non-veterans for the new naval reserve with a goal of 1,000,000 officers and men. Naval Reserve Week points out the importance of the naval program and how it affects national security, according to Lt. Brunner.

### ISA Stag-Drug Picnic To Be Held

The ISA picnic to be held at Lake Lansing Sunday should be attended by Donny Fowler, Van Stenburgh, Rick, and Illinois, sophomore, announced today.

Members taking orders for tickets are Steve Ruck, Ham-

## ZOTOZ and JAMAL PERMANENTS

Soft, Natural Lasting Curls

Betty's Beauty Bar

203 M.A.C. Ave.

Phone 8-3116

# clearance of famous footwear I. MILLER'S BARE-FOOT ORIGINALS PARAMOUNTS

originally 7.95 to 22.95

NOW

# \$3.85

the season's outstanding footwear successes drastically reduced for immediate clearance . . . all colors all heel heights . . . you'll see a wide selection of these better shoes — not every size in every style . . . but you will be sure to find charming spring favorites just made for you

OPEN THURSDAY EVENING UNTIL 9 O'CLOCK

Jacobson's  
East Lansing

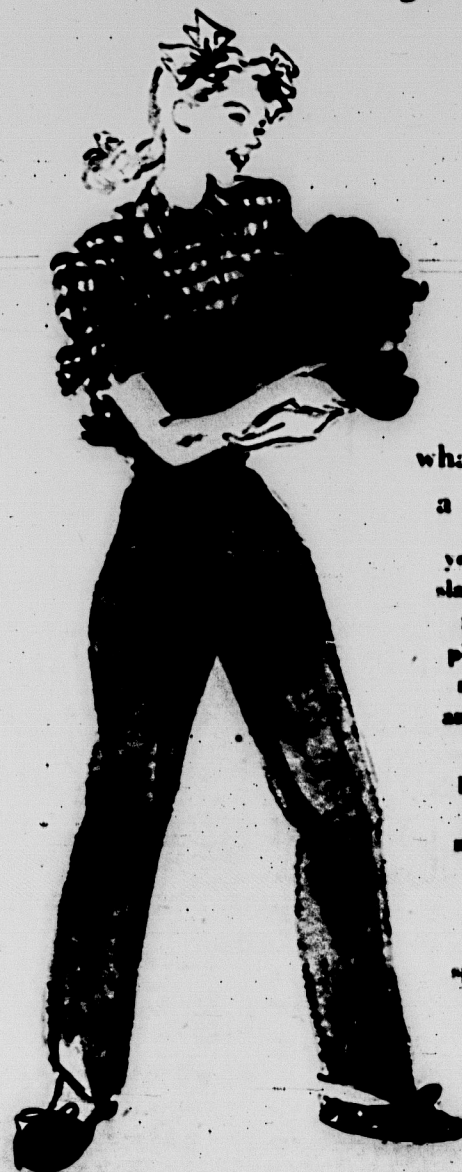


play clothes  
that are  
perfect for  
play time



Jacobson's  
East Lansing

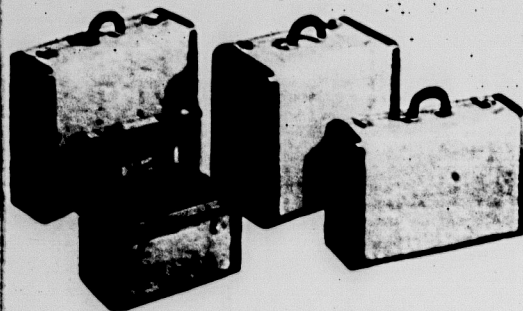
OPEN THURSDAY EVENING  
UNTIL 9 O'CLOCK



what to wear isn't a problem . . . when you shop here . . . our stocks do right by your figure . . . three-piece play suits fluffed with ruffles . . . plaid shirts and striped polo shirts, wonderful shorts and pedal pushers . . . we have all of these and more for you . . . the kind of play clothes you'll want to wear are found in our sportswear department

Liebertmann's

MATCHED  
TRAVEL SETS



- MODEST IN PRICE
- DISTINCTIVE IN DESIGN

Wheary's new "Strik- can" with wide loose bindings and straps	18" Overnight 17.00
Brown, Nantle, washed in smart luggage	21" Weekend 18.50
Travel with a case for panty. There's a case for every travel need.	Aviatrix for Women 30.00
with complete change- ing sets for men and women.	26" Pullman 32.50
	Hat and Shoe Case 30.00
	Train Case 22.50
	Aviator for Men 39.50

Installed in 12 or 14 days at no extra charge

Liebertmann's

300 SOUTH WASHINGTON AVE.

Leather Goods Luggage 6th