

Student Proposal For Leader Group OK'd By Hannah

Recent Suggestion Returns In Form Of Student Action

Members of the student-administration organization committee yesterday presented a proposal under the name of "Spartan Roundtable" to President John A. Hannah.

The proposal, springing from a suggestion by President Hannah to a group of student leaders recently that a student-administration group would be valuable to the college, was wholeheartedly approved by the president.

To Begin Fall Term
The "Spartan Roundtable" organization, to begin functioning fall term, will be composed of one representative, the president, from 36 campus organizations, according to the proposal.

Purposes of the "Spartan Roundtable," as outlined in the proposal, are to promote better understanding between students and administration concerning college problems and to develop a community spirit and a family atmosphere among all students and administrative members of MSC.

Non-legislative
The "Spartan Roundtable" proposal states that the function of the group will be non-legislative in character, and that a primary function will be to learn more about the college problems. Facts concerning these problems will be given to the group at monthly meetings, and student representatives will pass the information on to their respective groups.

The Spartan Roundtable committee, which drew up the proposal, is composed of Bill Johnston, South Haven senior, chairman, John Brenner, St. Clair junior, Maxine Finkbeiner, Middleville junior, Tom Loring, Lansing senior, Jane Cade, East Lansing senior, and Bill Page, Muskegon junior.

Groups Listed
The following groups will be represented: East and West Mayo, North and South Williams, North and South Campbell, Mason-Abbott, Snyder-Phillips club, Wells hall, Landon hall, and North hall.

Others are: Women's Co-ops, Men's Co-ops, ISA, Town Girls, Quonsets, IFU, Red Cedar Village, Trailer Camp, Prefabs, State News, Student Council, Officers' club, and AWS.

International club, Varsity club, Blue Key, Interfaith council, Newman club, WAA Veterans, Wives, PanHel, Mortar Board, Tower Guard, Excubitor, American Legion, and AVC conclude the list.

Seniors
All seniors who have not picked up their caps and gowns are asked to do so at the second-floor checkroom of the Union between 3:30 and 4:30 p.m. If it is impossible to do so any day at that hour, call 414 for special arrangements.

Seniors will not be able to pick up invitations at the previously announced time as they have not arrived.

**All-Star Band Will Play
In Outdoor Concert**

Under the direction of Jimmy Shafer, the 19 piece All-Star band will give its first concert tonight at 8 in the Bandshell. Several specialty numbers, chosen in professional radio poll, will be included on the program. The orchestra includes six brass, flute, oboe and bassoon, and guitar.

A mixed vocal group will be featured on the program. They are: Jopee French, Lansing sophomore; Howard Kitzman, Marquette freshman; Bob Hinkins, Lansing freshman; Chuck Roberts, Harbor sophomore; and Mary McQuerry will be special soloist.

The whole thought behind this concert is to give the students the kind of entertainment I think they want," said Jimmy Shafer, director of the group and originator of the idea of combining campus-band and radio.

Mardi Gras Polls To Open For Voters

Students To Elect
Royal Candidates
To Enter Finals

Contestants for the Mardi Gras king and queen will be narrowed down in today's primary elections being held in the Union from 8 a.m. to 5 p.m.

Candidates from fraternities, sororities and campus residences will be elected to run in the final elections Friday.

Coronation of the winners by President John Hannah will be held during intermission at the semi-formal dance in the college auditorium Saturday evening. The annual affair, featuring Bob Strong's orchestra, is sponsored by Union board.

Photos In View
Photographs of candidates have been placed on boards in the Union where balloting is being held. The Union board disclosed that the primaries will eliminate all but eight candidates for queen, and all but four candidates for king.

In the finals all but five women will be eliminated, the winner to reign as queen and the remaining four to act as her court. Only one of the candidates for king will remain after the finals.

Tickets On Sale
Tickets for the all-college dance are on sale at the Union ticket office.

Contestants for queen are Mary Tudor, South Campbell hall; Audrey Davison, Alpha Xi Delta; Mary Kite, Kappa Kappa Gamma; Margie Schumacher, Delta Gamma; Jane Hoffman, Alpha Phi; Rhon Yerkes, Zeta Tau Alpha; and Barb Davies, Alpha Chi Omega.

Others are Donna Van Tongeren, Delta Zeta; Connie Frev, Sigma Kappa; Phyllis Jenkins, West Mayo; Phyllis Ostrom, Town Girls; Beverly Sedwick, Alpha Gamma Delta; Jackie Lowe, North Campbell; Edith Erickson, North Williams; Ardie Westman, South Williams; Sue Cheney, Phi Beta Phi; and Jacqueline Elliot, Gamma Phi Beta, and Barb Tanner, Kappa Alpha Theta.

Candidates for king are John Hayes, Sigma Chi; Harry Hughes, Sigma Alpha Epsilon; Bill Gaylord, Alpha Tau Omega; Bob Butler, Beta Chi; Keith Jolliffe, Kappa Sigma; Dick Poole, Sigma Iu; Don Van Gorder, Alpha Psi; Hal Sessions, Delta Sigma Phi; Dwan Ziegler, Lambda Chi Alpha; John Hallenger, Wells hall; and Rolfe Young, Phi Delta Theta.

Free Exchange Heads Agenda Of UN Group

LAKE SUCCESS, N. Y., May 19 (AP)—Far-reaching suggestions by the United States, Britain and France for eliminating censorship and for the free exchange of news around the globe went before the United Nations sub-commission on freedom of information and of the press today at its first meeting.

The sub-commission convened to arrange for a world conference on freedom of information, possibly next year. Dr. G. J. Van Heuven Goedhart, former under-general editor of the Netherlands newspaper Het Parool, Amsterdam, and now its chief editor, was unanimously named president.

Members from Soviet Russia, the United States, and China were present; the elected members from France and Britain sent representatives.

Henri Laugier, U. N. assistant secretary-general, told the sub-commission that the U. N. "must and cannot fail in its determination to safeguard freedom of information and the press throughout the world."

Grumky Hits Atom Control
NEW YORK, May 19 (AP)—Andre A. Grumky, deputy Soviet Foreign Minister, declared tonight that the apparent United States monopoly of atomic energy production was "an illusion."

Grumky, Russia's representative on the United Nations Security Council, warned that the United States might find itself in a "less favorable position."

Joan Before Her King

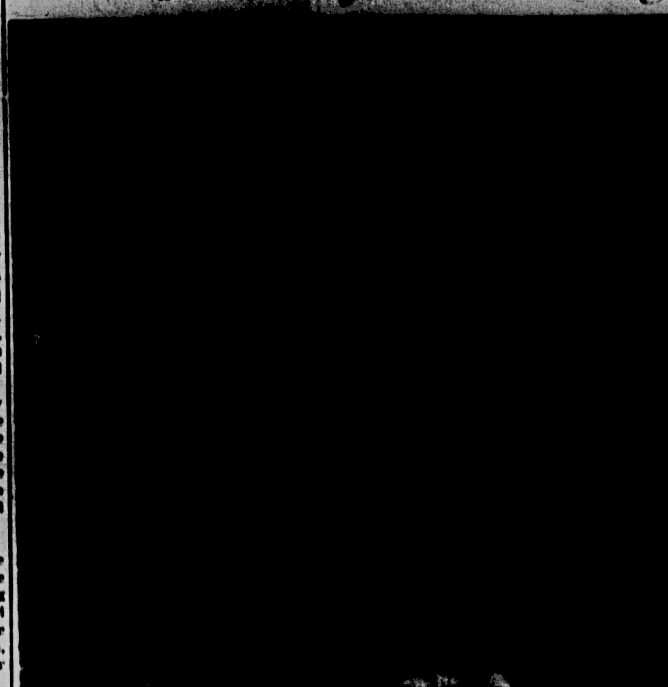


Photo by Arnold Brandt
Joan O'Brien, Lansing senior, K. Duke Elm, Lansing freshman, Mary Ellen Christensen, Flint junior, Bill Heath, Vermontville sophomore, Fred Vincent, Chicago graduate student, shown in a rehearsal scene from "Joan of Lorraine" being seen tonight at Fairchild theater at 8:15 under the direction of Harold Hansen of the speech department.

NEWS IN BRIEF

Truman Keeps Vigil
GRANDVIEW, Mo., May 19 (AP)—President Truman spent another long and anxious day at the bedside of his gravely ill mother as his daughter flew here to join him in his vigil after calling off her cherished concert stage debut.

Tax Load To Be Eased
WASHINGTON, May 19 (AP)—Secretary of the Treasury Snyder told Congress today a period of tax reduction is approaching, indicating that the administration, which has opposed tax slashing now, will approve a 1 per cent easing of the tax load, possibly in 1948.

President Pushes Medical Aid
WASHINGTON, May 19 (AP)—President Truman appealed to Congress today for a start, at least, on a broad medical relief plan including nationwide health insurance, but leaders of both parties, judged nothing would come of it at this session. The president called for a national health services, and federal aid to provide more hospitals and doctors in areas where there are not enough.

Officer Accused Of Maltreating Fellow Prisoners
WASHINGTON, May 19 (AP)—The Navy announced today it is trying Lt. Comdr. Edward N. Little, Monrovia, Calif., on charges of "maltreatment" of fellow prisoners when he was senior officer in a Japanese prison camp.

The court martial trial has been going on for two months behind closed doors at the naval yard here.

A Navy announcement, issued here, said the charges against Little are based on "allegations concerning his conduct toward his fellow prisoners when he was senior officer in a Japanese prison camp."

It said the three major charges against Little are: maltreatment of a person subject to his orders, conduct of the prejudice of good order and discipline, conduct unbecoming an officer and a gentleman.

The proceedings have been held behind closed doors at Little's request, the navy said.

Little was awarded the Silver Star for gallantry in action before the fall of the Philippines. He was stationed at the Navy yard at Cavite and was captured by the Japanese at Corregidor.

Co-ops To Plan More Houses For MSC Men
Plans for extending Michigan State college men's co-op housing will be discussed at a meeting tonight at 8 in 103 Union annex, Jerry Smith, president of the Inter-Co-op council, announced yesterday.

Don Randall, Niles sophomore, will lead the discussion. He said that among the 50 expected to attend will be representatives of Quonset hut 14. Most of the men in this hut hope to move into a co-op house fall term, Randall said.

Sigler Says McKay Behind Attempts To Embarrass State

Civil Service Issue Starts
Blast By Administration

LANSING, May 19 (AP)—Governor Sigler, obviously seething, today charged that "the fine hand of Frank D. McKay" was at work in the legislature "to embarrass, confuse, and annoy this administration."

Beginning with a blast at the dispute over the Civil Service department, appropriation Sigler expanded his charges to "the confusion of the whole financial picture."

"Certain individuals are concerned more with playing politics than doing what they have to do," he said.

"The majority of the legislature are sincere and making an honest effort to govern the state well. But a few linked up with the bad crowd are successfully throwing a monkey wrench into the whole works for no purpose but to embarrass this administration."

Sigler's references were to an old enemy, Frank D. McKay, Grand Rapids Republican leader and acquitted defendant in a state graft grand jury trial while Sigler was special prosecutor.

The dispute was set off when Sigler announced that Rep. John P. Espe, chairman of the House

Frosh-Soph Battle Set For Cedar
The freshman-sophomore tug of war across the Red Cedar river will be held Thursday afternoon at 4.

A site just north of the athletic bridge near the Women's gym has been chosen for the traditional mass race.

Dean S. H. Crowe announced that college police will be on hand to handle the traffic.

Floriculture Club To Hold Meeting To Plan Forum
Acting president of the freshman class Jim O'Rourke stated that 100 yards of stout rope, one inch in diameter, have been procured from the college grounds department for the melee.

Louis Goers, acting soph president, has appointed Jim Hoven to organize the sophomores for the battle. O'Rourke will lead the freshmen.

The freshmen issued a formal challenge to the sophs at the beginning of March which read in part as follows:

"We, the Class of '50, believing that we are superior in every way to the Class of '49, do hereby formally challenge you to a contest of strength to take place across the beautiful Red Cedar during the coming spring term."

In other words, you depraved stumblers, prepare for the beating of your lives."

Naples Reply
A reply was returned to the frosh which read in part:

"As a group ordinarily bound to logical, conscientious and orderly thinking, the Class of '49 cannot recognize your feeble organization as one worthy to bear the name of Michigan State college."

"However, waiving technical legalities, we have graciously condescended to engage you at the ends of a stout rope to be stretched across the Red Cedar at a date to be mutually agreed upon."

Field Day To Give Log Sawers Opportunity To Make Chips
With only three days remaining, plans for the annual Ag Field Day are being rushed to completion by the members of Ag council. The Field Day will be held this Friday at the Livestock Pavilion.

Tickets for the event are now on sale by all members of Ag Council. A ticket entitles the holder to take part in the judging contests, the barbecue at night, or to attend the evening program. One ticket can be used for one of these events or for all three, Clayton Cory, Chairman of the ticket committee stated.

Holds Contests
Judging contests, sponsored by different clubs in the School of Agriculture, will be featured on the afternoon program. The dairy club will sponsor dairy cattle and dairy products judging, and judging of meat and livestock will be provided by Block and Bridle.

The Agronomy club is planning seed identification and crops judging contests, and contests in poultry and egg judging will be provided by the Poultry Club. The Ag Engineering group will have contests related to their fields and a contest will also be

Weather
(Ready With Forecasted Data)

Daily Student Publication of Michigan State College

EAST LANSING, MICHIGAN, TUESDAY, MAY 20, 1947

No. 149

Tickets for "Joan of Lorraine" are still available at the Union Ticket office, for all performances.

ways and means committee, had assured the governor "that his committee will see that the civil service matter is taken care of."

The senate in a dispute with Civil Service director Tom Wilson had refused to approve a deficiency appropriation for the department. Wilson threatened to add up payrolls for 21,000 state employees.

Just before the governor's afternoon press conference, however, Wilson had announced that his staff had voluntarily worked all weekend to process the payrolls on the May 25 payweek.

But starting tonight, the 155 Civil Service workers were laid off because of lack of funds, Wilson said.

Bell Workers End Dispute Over Wages

DETROIT, May 19 (AP)—The wage was paved tonight for an early resumption of normal telephone service in Michigan as striking plant workers settled their dispute with Michigan Bell.

Walter Schaar, head of the plant union, said the new agreement includes a general wage increase averaging up to \$4.55 weekly including fringe items as well as an anti-discrimination clause and new apprentice and seniority schedules.

The proposal will not have to be ratified by the 5,600 plant employees before work can be resumed.

Schaar said, although the plant workers will respect picket lines of other striking unions.

Meanwhile, Michigan Bell's traffic employees, making up the largest of the six unions involved in the walkout, were voting on a proposal to end their dispute.

Schaar said the plant agreement takes care of the union's main objection to an earlier proposal which failed to protect seven Grand Rapids men discharged by the company for reportedly cutting a cable.

The company estimated the agreement would add \$1,500,000 to its pay roll. They emphasized that emergency phone service would have to continue until all workers return to their jobs.

House Bill Gives MSC Six Million

The house of representatives of the state legislature yesterday afternoon passed a bill appropriating \$6,212,221 for Michigan State college for the fiscal year beginning July 1, 1947.

Of this allotment \$4,997,538 is to be for the college general use. The college experiment station was given \$601,500.

Spartans Hit Early Topping Wayne, 6-0; No. 5 For Roberts

By BUD LAWSON

Michigan State drubbed Wayne university, 6-0, on Old College field yesterday evening behind the four hit mound of Robin Roberts, who registered his fifth win against the Spartans.

Roberts was the complete master throughout, striking a fielder's choice after he had sent a high hopper to third base, scoring Hughes but forcing Walsh at third. Hansen singled to center scoring Peoples from second, and Erickson grounded out third to first, ending the inning.

Tight State Defense
Michigan State's defense showed well in the sixth when Jack Dillon and Frank Bagdon turned in fielding gems. Dillon replaced Ed Barbarito at second in that inning, and on the first play went deep behind first base for Jim Neubacher's grounder to throw him out at first.

Rob Teasley, following Neubacher's single, then Shuk drove a fly ball into right field foul territory, but Bagdon, playing that field, went over to take the ball against the fence.

State made it 14 wins against five losses in this game, while Wayne has won five and lost two. State will be in Detroit for a return game with the Tartars Wednesday.

Tansey, Gale Blast Par 72's Against Titans

By JACK O'HARA

Two sparkling par 72's by Bob Tansey and Jack Gale led the way Saturday, as Michigan State's golf squad overcame the University of Detroit, 201-101. The match was played in semi-darkness during a constant drizzle on Red Run course in Royal Oak.

Tansey, Gale, Brian Charier and Bob Billig all won their matches from the Titans. Charier had a 79 and Billig a 78 against Detroit. Howard Visger won three points for State, by default, when his opponent, Joe Visscher, failed to put in an appearance.

Dick Buehler, of the Titans was given the number one position Saturday on the basis of his showing in the triangular match at Walnut Hills. Buehler had an 81 against Purdue and State in that contest. He led the metropolitan outfit again on Saturday with a 78.

State's Vantage Losses
Johnny Politz of Detroit was dropped to third spot, but came through with a 79 to down Don Vantine of State, who shot an 83. Don wasn't in top shape for the match, as the result of a bad cold.

Spartan Jack Mounier lost his match to Johnny Brennan of Wayne. 2-1. Brennan had an 82 and Mounier an 84. Don Fisher, Buehler's opponent, shot an 82.

The great gift of Tansey and Gale was the best of the season for both. Fred Wampler, sensational Purdue star, fired a 68-69 combination Saturday as the Boilermakers' triumphed the powerful U of M squad 201-61. Wampler's score included a hole in one.

Start New Practice
Coach Ben Van Alstyne said he will start a 34-hole practice round this Friday to determine the team that will make the trip to Ann Arbor June 22 for the NCAA matches. Billig, Mounier, Gale, Visger, and Jim Anderson are battling for the two open spots on Van's list.

Van said that the meet at the Wolverine course will be played on a strict medal honor basis, and that points and best ball tallies will be discarded during the competition. Purdue looms as the strongest threat, with Northwestern also in the running.

The final intercollegiate match of the present season will be played here tomorrow with the Wayne linksmen.

Lambda Chi Lead In IFC Tournament; Rain Halts Finish Of Last Nine Holes

By HOWARD HOUVER

Rain forced the postponement of the second nine holes of the interfraternity golf tournament last Saturday at Glenmore golf course.

IFC athletic director Don Lamont, Detroit senior, will meet with captains of the various home teams Wednesday evening to decide whether the remaining nine or an additional 18 holes will be played.

Leading the field with a total of 168 points was Lambda Chi Alpha, paced by Don Lawrence, who shot a 40. Close behind was Bernard Manker with a 41, and

Paul Schold came in third with a score of 43. Fourth man on the team was Frank Lansing with a 44. Don Hale also scored a 44.

Second with a score of 176 was Sigma Alpha Epsilon. Jake Wilfong led the SAEs with a 41. Second low man was Robert Lee who shot 42. Third and fourth places were taken by Phi Delta Theta and Phi Delta Phi with scores of 43 and 44 respectively.

Phi Delta Theta came in third, shooting a team total of 171. Don Pank led the Phi Deltas with a 37. Dick Johnson 42, Leland Pank 43, and Don Graham with a 45, composed the rest of the squad.

Totaling 174 points, Sigma Nu, last year's champion took fourth.

Shooting 42's, Glen Hatfield and Buzz Hart tied for first. Dick Lang and Gordon Trobert took the other two low places with 44's.

Low Medal Scores
Shooting a one over par 37, Don Pank of Phi Delta Theta took low medal honors.

Scoring even 40's, Chuck Cob, Delta Sigma Phi, and Don Lawrence, Lambda Chi Alpha, tied for second low.

Right on their heels were Bernard Manker of Lambda Chi and Jake Milliken, Sigma Alpha Epsilon, with identical totals of 41.

Five men from each Greek house compete in the tournament. Team scores are based on the lowest four-man totals.

Shooting 42's, Glen Hatfield and Buzz Hart tied for first. Dick Lang and Gordon Trobert took the other two low places with 44's.

Low Medal Scores
Shooting a one over par 37, Don Pank of Phi Delta Theta took low medal honors.

Scoring even 40's, Chuck Cob, Delta Sigma Phi, and Don Lawrence, Lambda Chi Alpha, tied for second low.

Right on their heels were Bernard Manker of Lambda Chi and Jake Milliken, Sigma Alpha Epsilon, with identical totals of 41.

Five men from each Greek house compete in the tournament. Team scores are based on the lowest four-man totals.

Shooting 42's, Glen Hatfield and Buzz Hart tied for first. Dick Lang and Gordon Trobert took the other two low places with 44's.

Low Medal Scores
Shooting a one over par 37, Don Pank of Phi Delta Theta took low medal honors.

Scoring even 40's, Chuck Cob, Delta Sigma Phi, and Don Lawrence, Lambda Chi Alpha, tied for second low.

Right on their heels were Bernard Manker of Lambda Chi and Jake Milliken, Sigma Alpha Epsilon, with identical totals of 41.

Five men from each Greek house compete in the tournament. Team scores are based on the lowest four-man totals.

Shooting 42's, Glen Hatfield and Buzz Hart tied for first. Dick Lang and Gordon Trobert took the other two low places with 44's.

Low Medal Scores
Shooting a one over par 37, Don Pank of Phi Delta Theta took low medal honors.

Scoring even 40's, Chuck Cob, Delta Sigma Phi, and Don Lawrence, Lambda Chi Alpha, tied for second low.

Right on their heels were Bernard Manker of Lambda Chi and Jake Milliken, Sigma Alpha Epsilon, with identical totals of 41.

Five men from each Greek house compete in the tournament. Team scores are based on the lowest four-man totals.

Shooting 42's, Glen Hatfield and Buzz Hart tied for first. Dick Lang and Gordon Trobert took the other two low places with 44's.

Low Medal Scores
Shooting a one over par 37, Don Pank of Phi Delta Theta took low medal honors.

Scoring even 40's, Chuck Cob, Delta Sigma Phi, and Don Lawrence, Lambda Chi Alpha, tied for second low.

Right on their heels were Bernard Manker of Lambda Chi and Jake Milliken, Sigma Alpha Epsilon, with identical totals of 41.

Five men from each Greek house compete in the tournament. Team scores are based on the lowest four-man totals.

Shooting 42's, Glen Hatfield and Buzz Hart tied for first. Dick Lang and Gordon Trobert took the other two low places with 44's.

Low Medal Scores
Shooting a one over par 37, Don Pank of Phi Delta Theta took low medal honors.

Scoring even 40's, Chuck Cob, Delta Sigma Phi, and Don Lawrence, Lambda Chi Alpha, tied for second low.

Right on their heels were Bernard Manker of Lambda Chi and Jake Milliken, Sigma Alpha Epsilon, with identical totals of 41.

Five men from each Greek house compete in the tournament. Team scores are based on the lowest four-man totals.

Shooting 42's, Glen Hatfield and Buzz Hart tied for first. Dick Lang and Gordon Trobert took the other two low places with 44's.

Low Medal Scores
Shooting a one over par 37, Don Pank of Phi Delta Theta took low medal honors.

Scoring even 40's, Chuck Cob, Delta Sigma Phi, and Don Lawrence, Lambda Chi Alpha, tied for second low.

Right on their heels were Bernard Manker of Lambda Chi and Jake Milliken, Sigma Alpha Epsilon, with identical totals of 41.

Five men from each Greek house compete in the tournament. Team scores are based on the lowest four-man totals.

'S' Smothers Marquette Track Team

By WALLY McWHIRTER

Taking first place in all but two events, Michigan State college's track squad Saturday afternoon scored its third straight victory by overpowering Marquette university 99-2-56 1/2 in Marquette stadium.

Times and distances were far from impressive due to a soggy track. One meet record fell as Jim Zito of State whipped the discus 143 feet, 4 1/2 inches topping the 10-year-old former stoddard by more than three feet.

The Hilltoppers took top honors in the javelin on Carl Schuetz's heave of 170 feet, 1 1/2 inches and in the pole vault where Roy Potoczniuk flipped over the crossbar at 12 feet.

Bob Schepers extended his 11 schein of victories in the 100 and 220 yard dashes to eight. He has scored double triumphs in four meets.

In addition, he anchored a 440 yard relay team to another first place. Page Christiansen, Bob Fraser and Fred Johnson were the other members of the relay quartet.

The condition of the track slowed Jack "Rocket" Dianetti to 4.39 as he won the one mile run. The speedy freshman was clocked at 4:12 the week before as he finished second at Penn State.

Walt Kalmbach came in third to add to the Spartan total.

Weightman Johnnie Mueller won the shot put with a toss of 44 feet, 9 1/4 inches and took a third in the discus. Fred Johnson continued his winning ways in the broad jump with a leap of 23 feet, 2 inches. He took second place behind Schepers in both dashes. State's John Shields was second in the broad jump and third in the javelin.

Gibbard Takes 880
In the 440 Frank Collins slammed home first in front of Capt. Jim Fraser in 52.2. Jim Gibbard won his third straight half mile race with a 2:04.8 timing. Christiansen took the high hurdles while Bob Fraser was annexing the laurels in the low sticks. Dave Sorenson came in third in both events.

Clark Atcheson won his first race of the outdoor season in the two mile with a time of 10:17.4. Bob Sewell finished third. Final individual victory for MSC came in the high jump. George Shomin hitting 5 feet 10 inches to win.

Tie For Second
Mayo Arnold and Bob Vorseburg tied with Phil Anderson of Marquette for second place in the pole vault.

Jim Fraser, Collins, Gibbard and Al Lagrou did the baton passing as the Spartans raced into first place in the mile relay. The time was 3:37.4.

Tomorrow night at 5:15 the finals of the 50 yard dash will be run, followed by the 440 yard run, the 880 yard relay and the high jump.

Defending champions are the Sigma Nus who amassed 49 points to top last year's meet.

Lambda Chi Golfers Lead IFC Play



Three members of the Lambda Chi Alpha fraternity golf team posed for the photo in Saturday's nine-hole opening round of the IFC tournament. Coming up to the green are (from left to right) Paul Schold, who shot a 43, Frank Lansing, 44, Don Lawrence, who was low with a 40, and Bernie Manker, 41.

Spartan JV's Head For Second Win Over Bronco Squad

The Michigan State college JV nine will play host to the B team from Western Michigan today at 4 p.m. on Old College field.

This marks the second meeting of the two teams. State copied a decisive 7-4 win over the Broncos ten days ago when they met them at Kalamazoo.

Either Chuck Dietrich or George Brooks is expected to get the nod for mound duty in today's contest, with George Pavlick, who has been behind the plate in most of the JV games, doing the catching.

Joe Dechard, who caught John Kobs' eye because of his better than 400 batting average, and who is currently training with the Varsity, will probably be switched to the outfield for the game.

Tomorrow the JV's travel to Jackson to play the re-scheduled game with Jackson prison.

Coach Ben Van Alstyne said he will start a 34-hole practice round this Friday to determine the team that will make the trip to Ann Arbor June 22 for the NCAA matches. Billig, Mounier, Gale, Visger, and Jim Anderson are battling for the two open spots on Van's list.

Van said that the meet at the Wolverine course will be played on a strict medal honor basis, and that points and best ball tallies will be discarded during the competition. Purdue looms as the strongest threat, with Northwestern also in the running.

The final intercollegiate match of the present season will be played here tomorrow with the Wayne linksmen.

State's Vantage Losses
Johnny Politz of Detroit was dropped to third spot, but came through with a 79 to down Don Vantine of State, who shot an 83. Don wasn't in top shape for the match, as the result of a bad cold.

Spartan Jack Mounier lost his match to Johnny Brennan of Wayne. 2-1. Brennan had an 82 and Mounier an 84. Don Fisher, Buehler's opponent, shot an 82.

The great gift of Tansey and Gale was the best of the season for both. Fred Wampler, sensational Purdue star, fired a 68-69 combination Saturday as the Boilermakers' triumphed the powerful U of M squad 201-61. Wampler's score included a hole in one.

Start New Practice
Coach Ben Van Alstyne said he will start a 34-hole practice round this Friday to determine the team that will make the trip to Ann Arbor June 22 for the NCAA matches. Billig, Mounier, Gale, Visger, and Jim Anderson are battling for the two open spots on Van's list.

Van said that the meet at the Wolverine course will be played on a strict medal honor basis, and that points and best ball tallies will be discarded during the competition. Purdue looms as the strongest threat, with Northwestern also in the running.

The final intercollegiate match of the present season will be played here tomorrow with the Wayne linksmen.

State's Vantage Losses
Johnny Politz of Detroit was dropped to third spot, but came through with a 79 to down Don Vantine of State, who shot an 83. Don wasn't in top shape for the match, as the result of a bad cold.

Spartan Jack Mounier lost his match to Johnny Brennan of Wayne. 2-1. Brennan had an 82 and Mounier an 84. Don Fisher, Buehler's opponent, shot an 82.

The great gift of Tansey and Gale was the best of the season for both. Fred Wampler, sensational Purdue star, fired a 68-69 combination Saturday as the Boilermakers' triumphed the powerful U of M squad 201-61. Wampler's score included a hole in one.

Start New Practice
Coach Ben Van Alstyne said he will start a 34-hole practice round this Friday to determine the team that will make the trip to Ann Arbor June 22 for the NCAA matches. Billig, Mounier, Gale, Visger, and Jim Anderson are battling for the two open spots on Van's list.

Van said that the meet at the Wolverine course will be played on a strict medal honor basis, and that points and best ball tallies will be discarded during the competition. Purdue looms as the strongest threat, with Northwestern also in the running.

The final intercollegiate match of the present season will be played here tomorrow with the Wayne linksmen.

State's Vantage Losses
Johnny Politz of Detroit was dropped to third spot, but came through with a 79 to down Don Vantine of State, who shot an 83. Don wasn't in top shape for the match, as the result of a bad cold.

Spartan Jack Mounier lost his match to Johnny Brennan of Wayne. 2-1. Brennan had an 82 and Mounier an 84. Don Fisher, Buehler's opponent, shot an 82.

The great gift of Tansey and Gale was the best of the season for both. Fred Wampler, sensational Purdue star, fired a 68-69 combination Saturday as the Boilermakers' triumphed the powerful U of M squad 201-61. Wampler's score included a hole in one.

Start New Practice
Coach Ben Van Alstyne said he will start a 34-hole practice round this Friday to determine the team that will make the trip to Ann Arbor June 22 for the NCAA matches. Billig, Mounier, Gale, Visger, and Jim Anderson are battling for the two open spots on Van's list.

Van said that the meet at the Wolverine course will be played on a strict medal honor basis, and that points and best ball tallies will be discarded during the competition. Purdue looms as the strongest threat, with Northwestern also in the running.

The final intercollegiate match of the present season will be played here tomorrow with the Wayne linksmen.

Harler Peterson Wins Game With Last Inning Home Run

In a slam bang drag out affair, Snyder 10 outlasted Snyder 13 and came out on the top end of a 12-10 score in last night's softball game at Amis field.

Going into the last half of the final inning, Russ Peterson, hurler for the winners, slammed out a home run with one man aboard to win his own game.

Trailing by eight runs at the start of the fourth, Snyder 13 scored five runs as Tom Ferris slammed out a four bagger with the bases loaded after one run had already been scored.

Then in the fifth inning, pitcher Bruce Smith poked out a home run with two mates on to tie up the game. This led up to the fateful fifth and Snyder 10 went home victorious.

Mason 3 Wins
Mason 3 bested Mason 7, 4-1, as Velus Benson, Pontiac sophomore, tossed a one-hitter.

Benson walked in the only run in the third, after pitcher Hank Kuchek got a Texas league single for the one bingle.

Van Peters, also from Pontiac, was behind the plate for the victors.

Maler Checks A One-Hitter
Ed Maler pitched the second one hit game of the evening as Snyder 16 white-washed Snyder 18, 5-0.

Cliff Behrens drove out a home run with runners on first and second to drive in three of the five runs.

Jim Colby, on the mound for the losers, gave up eight hits. His battery mate was George Dainty.

Bringing the number of single hit games of the night to three, Mason 6 shut out Mason 9, 11-0. The one-hit chucker was Bob Bassett.

Open 24 Hrs. Closed Sun.
EAT: Where Food Is Best!
DICK'S GRILLETT
111 N. GRAND LANSING
Ph. 53719
Upside Quality at Downside Prices

Fraternity Jewelry
Dance Programs
FAVORS - RINGS
L. G. Balfour Co.
1319 S. University, Ann Arbor
"Patrons only your official Jeweler"
TOM BUCKLING
Michigan Representative

KAY'S KNIT SHOP
(IN BASEMENT OF INK POT)
FOR
YARNS, CANVAS and NEEDLES
TO MAKE THAT SHAGGY RUG
IN SCHOOL OR SORORITY COLORS
HOURS: 12:30 - 5:30 SAT. 12:30 - 5:00

SPECIAL FOR THIS WEEK
SKIRTS and PANTS CLEANED and PRESSED
40c
Dewar's Dry Cleaning
121 STODDARD AVENUE PHONE 8-5316
4 Blocks East of Mason-Abbot - Back of Texaco Station

In Response To Many Requests We Will Stay Open FRI. and SAT. NIGHTS Till 2:00 - AT NO ADVANCE IN RATES -
Regular Hours 3:30 P.M. - Midnight
DEPPA'S CANOE SERVICE
Just East of East Lansing On US-16
Next Door To Delta Sig House
Make Up A Party and Phone 89668 for Reservation and Special Rate

Not Too Tough

AB	R	H	PO	A
1	0	0	0	0
2	0	0	0	0
3	0	0	0	0
4	0	0	0	0
5	0	0	0	0
6	0	0	0	0
7	0	0	0	0
8	0	0	0	0
9	0	0	0	0
10	0	0	0	0
11	0	0	0	0
12	0	0	0	0
13	0	0	0	0
14	0	0	0	0
15	0	0	0	0
16	0	0	0	0
17	0	0	0	0
18	0	0	0	0
19	0	0	0	0
20	0	0	0	0

CAPITAL FILM SERVICE
BIG PICTURES COST NO MORE
WITH OUR 24 HOUR DEVELOPING AND PRINTING
Drop in and See Our Recording Studio
Finest in Central Michigan
ACROSS FROM THE STATE THEATER
224 Abbot Road

NEW CAMPUS CLEANERS
AVAILABLE FOR YOUR USE!
• Finest Dry Cleaning in Town
• Expert Tailoring Service
• Press-While-You-Wait Service
TAKE ADVANTAGE OF OUR EXPERIENCE!
347 E. GRAND RIVER - NEXT DOOR TO MARKET BASKET

THE KEITH COLE PORTRAIT STUDIO
is still making appointments for Graduation Portraits
159 1/2 East Grand River Above College Drug
PHONE 85514

AS EVER: THE NEW HUT STEAK HOUSE
NEW HOURS
11 A.M. Til Midnight Tasty Luncheons
Closed Mondays Deluxe Dinners
Late Evening Snacks
WHS Presents —
"TABLE TALK at THE NEW HUT"
An "ON THE SPOT" direct from THE NEW HUT each Tuesday, Thursday, and Saturday from 11:45 - 12:00 A.M.
Stop in and perhaps you will be on the air... or tune in at 1400 on your dial and hear your friends being interviewed directly from
THE NEW HUT
2321 E. Michigan Avenue Phone 61750
HENRY L. OWENS, Proprietor

Spartan Mag To Feature Plans For Water Carnival

Plans To Continue As Scheduled For 1947 Renewal Of Event

Michigan State's 1947 Water Carnival will be featured in the June issue of the Spartan magazine, Ted Carson, publicity chairman and Detroit senior, has stated.

The article will present brief descriptions of all the floats and "continents." Plans for the carnival are going ahead on schedule.

Asks For Contributions

In order to make the carnival a success, Carson asks that all organizations, clubs, and individuals contribute to the fund for the carnival. He asks that all contributions be sent to the Spartan magazine, 1000 Michigan Ave., Detroit 26, Mich.

He added that all contributions should be sent by Wednesday, June 12.

The publicity chairman said that the carnival will start at 10 a.m. on Saturday, June 14, and will continue through Sunday, June 15. He said that the carnival will be a great success and that all organizations and individuals should contribute to the fund.

Will Notify Contestants

The committee will notify all contestants as soon as the schedule has been completed. The contest will be held on May 29, 30, and 31, and will be a great success.

Contestants in these events will compete for the title of "Spartan" in the following categories: Poetry, Prose, Drama, and Music. The contest will be held on May 29, 30, and 31, and will be a great success.

According to Carson, there will be a great success in the carnival and all organizations and individuals should contribute to the fund. He said that the carnival will be a great success and that all organizations and individuals should contribute to the fund.

Publicity activities will include the distribution of the Spartan magazine, the collection of contributions, and the organization of the carnival. He said that the carnival will be a great success and that all organizations and individuals should contribute to the fund.

Naval Air Station Slates Open House For Week End

A major and open house will be held at the U.S. Naval Air Station at Grand Haven, Mich., on Saturday and Sunday, May 30 and 31.

The Saturday event will be held from 10 a.m. to 4 p.m. and will include a tour of the station, a demonstration of the station's facilities, and a picnic. The Sunday event will be held from 10 a.m. to 4 p.m. and will include a tour of the station, a demonstration of the station's facilities, and a picnic.

Admission is free and all are invited to attend. For more information, contact the Naval Air Station at Grand Haven, Mich.

The Naval Air Station at Grand Haven, Mich., is a major and open house will be held at the U.S. Naval Air Station at Grand Haven, Mich., on Saturday and Sunday, May 30 and 31.

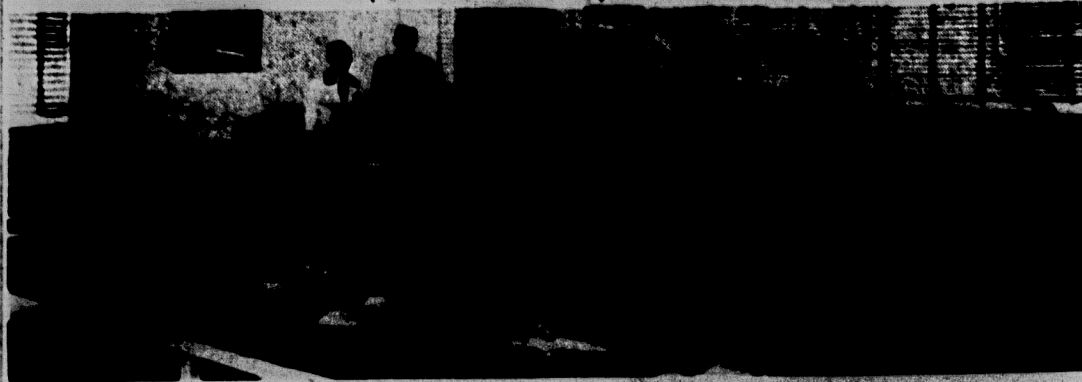
The Saturday event will be held from 10 a.m. to 4 p.m. and will include a tour of the station, a demonstration of the station's facilities, and a picnic. The Sunday event will be held from 10 a.m. to 4 p.m. and will include a tour of the station, a demonstration of the station's facilities, and a picnic.

Admission is free and all are invited to attend. For more information, contact the Naval Air Station at Grand Haven, Mich.

The Naval Air Station at Grand Haven, Mich., is a major and open house will be held at the U.S. Naval Air Station at Grand Haven, Mich., on Saturday and Sunday, May 30 and 31.

The Saturday event will be held from 10 a.m. to 4 p.m. and will include a tour of the station, a demonstration of the station's facilities, and a picnic. The Sunday event will be held from 10 a.m. to 4 p.m. and will include a tour of the station, a demonstration of the station's facilities, and a picnic.

Engineers View Demonstration



A senior mechanical engineering class is shown at a demonstration of hydraulic drive at the Lansing (Michigan) division of General Motors. Hydraulic units, both assembled and disassembled, were displayed to link the theoretical discussion

of operation principles with the product. Standing in the rear of the classroom left to right are: H. S. McIlwain, member of the (Michigan) Service department staff, and Prof. G. W. Hobbs, engineering department, MSU.

Former Chaplain 'Operation Crossroads' Cinema To Speak Tonight. To Spur Navy Recruiting Drive Meet Students

May 18-19 has been designated as "Naval Reserve Week" by the U.S. Navy. Lt. Jay Brunner, Naval public information officer in Lansing and yesterday.

The speaker will be Arthur J. Brunner, a former chaplain of the U.S. Navy, who served in the Pacific during World War II. He will speak on the importance of the Navy and the role of the Naval Reserve.

The speaker will be Arthur J. Brunner, a former chaplain of the U.S. Navy, who served in the Pacific during World War II. He will speak on the importance of the Navy and the role of the Naval Reserve.

The speaker will be Arthur J. Brunner, a former chaplain of the U.S. Navy, who served in the Pacific during World War II. He will speak on the importance of the Navy and the role of the Naval Reserve.

The speaker will be Arthur J. Brunner, a former chaplain of the U.S. Navy, who served in the Pacific during World War II. He will speak on the importance of the Navy and the role of the Naval Reserve.

The speaker will be Arthur J. Brunner, a former chaplain of the U.S. Navy, who served in the Pacific during World War II. He will speak on the importance of the Navy and the role of the Naval Reserve.

The speaker will be Arthur J. Brunner, a former chaplain of the U.S. Navy, who served in the Pacific during World War II. He will speak on the importance of the Navy and the role of the Naval Reserve.

The speaker will be Arthur J. Brunner, a former chaplain of the U.S. Navy, who served in the Pacific during World War II. He will speak on the importance of the Navy and the role of the Naval Reserve.

The speaker will be Arthur J. Brunner, a former chaplain of the U.S. Navy, who served in the Pacific during World War II. He will speak on the importance of the Navy and the role of the Naval Reserve.

The speaker will be Arthur J. Brunner, a former chaplain of the U.S. Navy, who served in the Pacific during World War II. He will speak on the importance of the Navy and the role of the Naval Reserve.

The speaker will be Arthur J. Brunner, a former chaplain of the U.S. Navy, who served in the Pacific during World War II. He will speak on the importance of the Navy and the role of the Naval Reserve.

The speaker will be Arthur J. Brunner, a former chaplain of the U.S. Navy, who served in the Pacific during World War II. He will speak on the importance of the Navy and the role of the Naval Reserve.

The speaker will be Arthur J. Brunner, a former chaplain of the U.S. Navy, who served in the Pacific during World War II. He will speak on the importance of the Navy and the role of the Naval Reserve.

The speaker will be Arthur J. Brunner, a former chaplain of the U.S. Navy, who served in the Pacific during World War II. He will speak on the importance of the Navy and the role of the Naval Reserve.

The speaker will be Arthur J. Brunner, a former chaplain of the U.S. Navy, who served in the Pacific during World War II. He will speak on the importance of the Navy and the role of the Naval Reserve.

Students Hold Sunday Outing

Thirty-five MSC students attended the annual Christian student foundation retreat, held at camp Mettama at Lake Lansing Saturday and Sunday.

The activities included recreation, general assemblies for evaluating the past year's program and planning for next year's program, committee meetings, and worship.

The six committees, Christian Faith, Recreation, Leadership Training, Social Responsibility, Campus Affairs, and Public Relations, planned definite projects and programs for these areas.

Dr. Daniel Williams, professor of Christian ethics at the University of Chicago, talked and led a discussion on the "Nature of God and the Will of God" for the Sunday morning service.

Maxine Finkbeiner of the Leadership committee was general chairman. Lois Devereaux, Barbara Simmons, Gerry Bennett, and Bob Smith, the executive officers of the Christian Student Foundation, presided over the general assemblies and evaluating meetings.

Phi Delta Triumphant Jerry Teifer and Russ Nadeau, Phi Delta Theta, teamed together to defeat Bob Schweitzer and Joe Colby, Phi Kappa Tau, 9-6 Monday afternoon in an inter-Fraternity Council football playoff at the College courts.

PATRONIZE STATE NEWS ADVERTISERS

ROMPS

by Bloom

for Sunny Days Ahead

White or Kelly Green (fab. etc. N and M widths. \$4.95)

Platform "Flatties". White, Red or Burg leather. \$5.95

Other Play Shoes COMBLES \$6.95 BALL BAND \$4.45

DeLamp's EAST LANSING

SHOES FOR EVERYONE

PATRONIZE STATE NEWS ADVERTISERS

EVERYBODY'S OVERBOARD

Found at The Style Shop 321 E. Grand River

ABOUT R & K'S CHECKERBOARD

IN MANCHESTER TISSUE

The closest thing to silk shown to cotton. R & K's exclusive Sanitized shirt of imported cotton. 30" - 36" - 42" - 48" - 54" - 60" - 66" - 72" - 78" - 84" - 90" - 96" - 102" - 108" - 114" - 120" - 126" - 132" - 138" - 144" - 150" - 156" - 162" - 168" - 174" - 180" - 186" - 192" - 198" - 204" - 210" - 216" - 222" - 228" - 234" - 240" - 246" - 252" - 258" - 264" - 270" - 276" - 282" - 288" - 294" - 300" - 306" - 312" - 318" - 324" - 330" - 336" - 342" - 348" - 354" - 360" - 366" - 372" - 378" - 384" - 390" - 396" - 402" - 408" - 414" - 420" - 426" - 432" - 438" - 444" - 450" - 456" - 462" - 468" - 474" - 480" - 486" - 492" - 498" - 504" - 510" - 516" - 522" - 528" - 534" - 540" - 546" - 552" - 558" - 564" - 570" - 576" - 582" - 588" - 594" - 600" - 606" - 612" - 618" - 624" - 630" - 636" - 642" - 648" - 654" - 660" - 666" - 672" - 678" - 684" - 690" - 696" - 702" - 708" - 714" - 720" - 726" - 732" - 738" - 744" - 750" - 756" - 762" - 768" - 774" - 780" - 786" - 792" - 798" - 804" - 810" - 816" - 822" - 828" - 834" - 840" - 846" - 852" - 858" - 864" - 870" - 876" - 882" - 888" - 894" - 900" - 906" - 912" - 918" - 924" - 930" - 936" - 942" - 948" - 954" - 960" - 966" - 972" - 978" - 984" - 990" - 996" - 1002" - 1008" - 1014" - 1020" - 1026" - 1032" - 1038" - 1044" - 1050" - 1056" - 1062" - 1068" - 1074" - 1080" - 1086" - 1092" - 1098" - 1104" - 1110" - 1116" - 1122" - 1128" - 1134" - 1140" - 1146" - 1152" - 1158" - 1164" - 1170" - 1176" - 1182" - 1188" - 1194" - 1200" - 1206" - 1212" - 1218" - 1224" - 1230" - 1236" - 1242" - 1248" - 1254" - 1260" - 1266" - 1272" - 1278" - 1284" - 1290" - 1296" - 1302" - 1308" - 1314" - 1320" - 1326" - 1332" - 1338" - 1344" - 1350" - 1356" - 1362" - 1368" - 1374" - 1380" - 1386" - 1392" - 1398" - 1404" - 1410" - 1416" - 1422" - 1428" - 1434" - 1440" - 1446" - 1452" - 1458" - 1464" - 1470" - 1476" - 1482" - 1488" - 1494" - 1500" - 1506" - 1512" - 1518" - 1524" - 1530" - 1536" - 1542" - 1548" - 1554" - 1560" - 1566" - 1572" - 1578" - 1584" - 1590" - 1596" - 1602" - 1608" - 1614" - 1620" - 1626" - 1632" - 1638" - 1644" - 1650" - 1656" - 1662" - 1668" - 1674" - 1680" - 1686" - 1692" - 1698" - 1704" - 1710" - 1716" - 1722" - 1728" - 1734" - 1740" - 1746" - 1752" - 1758" - 1764" - 1770" - 1776" - 1782" - 1788" - 1794" - 1800" - 1806" - 1812" - 1818" - 1824" - 1830" - 1836" - 1842" - 1848" - 1854" - 1860" - 1866" - 1872" - 1878" - 1884" - 1890" - 1896" - 1902" - 1908" - 1914" - 1920" - 1926" - 1932" - 1938" - 1944" - 1950" - 1956" - 1962" - 1968" - 1974" - 1980" - 1986" - 1992" - 1998" - 2004" - 2010" - 2016" - 2022" - 2028" - 2034" - 2040" - 2046" - 2052" - 2058" - 2064" - 2070" - 2076" - 2082" - 2088" - 2094" - 2100" - 2106" - 2112" - 2118" - 2124" - 2130" - 2136" - 2142" - 2148" - 2154" - 2160" - 2166" - 2172" - 2178" - 2184" - 2190" - 2196" - 2202" - 2208" - 2214" - 2220" - 2226" - 2232" - 2238" - 2244" - 2250" - 2256" - 2262" - 2268" - 2274" - 2280" - 2286" - 2292" - 2298" - 2304" - 2310" - 2316" - 2322" - 2328" - 2334" - 2340" - 2346" - 2352" - 2358" - 2364" - 2370" - 2376" - 2382" - 2388" - 2394" - 2400" - 2406" - 2412" - 2418" - 2424" - 2430" - 2436" - 2442" - 2448" - 2454" - 2460" - 2466" - 2472" - 2478" - 2484" - 2490" - 2496" - 2502" - 2508" - 2514" - 2520" - 2526" - 2532" - 2538" - 2544" - 2550" - 2556" - 2562" - 2568" - 2574" - 2580" - 2586" - 2592" - 2598" - 2604" - 2610" - 2616" - 2622" - 2628" - 2634" - 2640" - 2646" - 2652" - 2658" - 2664" - 2670" - 2676" - 2682" - 2688" - 2694" - 2700" - 2706" - 2712" - 2718" - 2724" - 2730" - 2736" - 2742" - 2748" - 2754" - 2760" - 2766" - 2772" - 2778" - 2784" - 2790" - 2796" - 2802" - 2808" - 2814" - 2820" - 2826" - 2832" - 2838" - 2844" - 2850" - 2856" - 2862" - 2868" - 2874" - 2880" - 2886" - 2892" - 2898" - 2904" - 2910" - 2916" - 2922" - 2928" - 2934" - 2940" - 2946" - 2952" - 2958" - 2964" - 2970" - 2976" - 2982" - 2988" - 2994" - 3000" - 3006" - 3012" - 3018" - 3024" - 3030" - 3036" - 3042" - 3048" - 3054" - 3060" - 3066" - 3072" - 3078" - 3084" - 3090" - 3096" - 3102" - 3108" - 3114" - 3120" - 3126" - 3132" - 3138" - 3144" - 3150" - 3156" - 3162" - 3168" - 3174" - 3180" - 3186" - 3192" - 3198" - 3204" - 3210" - 3216" - 3222" - 3228" - 3234" - 3240" - 3246" - 3252" - 3258" - 3264" - 3270" - 3276" - 3282" - 3288" - 3294" - 3300" - 3306" - 3312" - 3318" - 3324" - 3330" - 3336" - 3342" - 3348" - 3354" - 3360" - 3366" - 3372" - 3378" - 3384" - 3390" - 3396" - 3402" - 3408" - 3414" - 3420" - 3426" - 3432" - 3438" - 3444" - 3450" - 3456" - 3462" - 3468" - 3474" - 3480" - 3486" - 3492" - 3498" - 3504" - 3510" - 3516" - 3522" - 3528" - 3534" - 3540" - 3546" - 3552" - 3558" - 3564" - 3570" - 3576" - 3582" - 3588" - 3594" - 3600" - 3606" - 3612" - 3618" - 3624" - 3630" - 3636" - 3642" - 3648" - 3654" - 3660" - 3666" - 3672" - 3678" - 3684" - 3690" - 3696" - 3702" - 3708" - 3714" - 3720" - 3726" - 3732" - 3738" - 3744" - 3750" - 3756" - 3762" - 3768" - 3774" - 3780" - 3786" - 3792" - 3798" - 3804" - 3810" - 3816" - 3822" - 3828" - 3834" - 3840" - 3846" - 3852" - 3858" - 3864" - 3870" - 3876" - 3882" - 3888" - 3894" - 3900" - 3906" - 3912" - 3918" - 3924" - 3930" - 3936" - 3942" - 3948" - 3954" - 3960" - 3966" - 3972" - 3978" - 3984" - 3990" - 3996" - 4002" - 4008" - 4014" - 4020" - 4026" - 4032" - 4038" - 4044" - 4050" - 4056" - 4062" - 4068" - 4074" - 4080" - 4086" - 4092" - 4098" - 4104" - 4110" - 4116" - 4122" - 4128" - 4134" - 4140" - 4146" - 4152" - 4158" - 4164" - 4170" - 4176" - 4182" - 4188" - 4194" - 4200" - 4206" - 4212" - 4218" - 4224" - 4230" - 4236" - 4242" - 4248" - 4254" - 4260" - 4266" - 4272" - 4278" - 4284" - 4290" - 4296" - 4302" - 4308" - 4314" - 4320" - 4326" - 4332" - 4338" - 4344" - 4350" - 4356" - 4362" - 4368" - 4374" - 4380" - 4386" - 4392" - 4398" - 4404" - 4410" - 4416" - 4422" - 4428" - 4434" - 4440" - 4446" - 4452" - 4458" - 4464" - 4470" - 4476" - 4482" - 4488" - 4494" - 4500" - 4506" - 4512" - 4518" - 4524" - 4530" - 4536" - 4542" - 4548" - 4554" - 4560" - 4566" - 4572" - 4578" - 4584" - 4590" - 4596" - 4602" - 4608" - 4614" - 4620" - 4626" - 4632" - 4638" - 4644" - 4650" - 4656" - 4662" - 4668" - 4674" - 4680" - 4686" - 4692" - 4698" - 4704" - 4710" - 4716" - 4722" - 4728" - 4734" - 4740" - 4746" - 4752" - 4758" - 4764" - 4770" - 4776" - 4782" - 4788" - 4794" - 4800" - 4806" - 4812" - 4818" - 4824" - 4830" - 4836" - 4842" - 4848" - 4854" - 4860" - 4866" - 4872" - 4878" - 4884" - 4890" - 4896" - 4902" - 4908" - 4914" - 4920" - 4926" - 4932" - 4938" - 4944" - 4950" - 4956" - 4962" - 4968" - 4974" - 4980" - 4986" - 4992" - 4998" - 5004" - 5010" - 5016" - 5022" - 5028" - 5034" - 5040" - 5046" - 5052" - 5058" - 5064" - 5070" - 5076" - 5082" - 5088" - 5094" - 5100" - 5106" - 5112" - 5118" - 5124" - 5130" - 5136" - 5142" - 5148" - 5154" - 5160" - 5166" - 5172" - 5178" - 5184" - 5190" - 5196" - 5202" - 5208" - 5214" - 5220" - 5226" - 5232" - 5238" - 5244" - 5250" - 5256" - 5262" - 5268" - 5274" - 5280" - 5286" - 5292" - 5298" - 5304" - 5310" - 5316" - 5322" - 5328" - 5334" - 5340" - 5346" - 5352" - 5358" - 5364" - 5370" - 5376" - 5382" - 5388" - 5394" - 5400" - 5406" - 5412" - 5418" - 5424" - 5430" - 5436" - 5442" - 5448" - 5454" - 5460" - 5466" - 5472" - 5478" - 5484" - 5490" - 5496" - 5502" - 5508" - 5514" - 5520" - 5526" - 5532" - 5538" - 5544" - 5550" - 5556" - 5562" - 5568" - 5574" - 5580" - 5586" - 5592" - 5598" - 5604" - 5610" - 5616" - 5622" - 5628" - 5634" - 5640" - 5646" - 5652" - 5658" - 5664" - 5670" - 5676" - 5682" - 5688" - 5694" - 5700" - 5706" - 5712" - 5718" - 5724" - 5730" - 5736" - 5742" - 5748" - 5754" - 5760" - 5766" - 5772" - 5778" - 5784" - 5790" - 5796" - 5802" - 5808" - 5814" - 5820" - 5826" - 5832" - 5838" - 5844" - 5850" - 5856" - 5862" - 5868" - 5874" - 5880" - 5886" - 5892" - 5898" - 5904" - 5910" - 5916" - 5922" - 5928" - 5934" - 5940" - 5946" - 5952" - 5958" - 5964" - 5970" - 5976" - 5982" - 5988" - 5994" - 6000" - 6006" - 6012" - 6018" - 6024" - 6030" - 6036" - 6042" - 6048" - 6054" - 6060" - 6066" - 6072" - 6078" - 6084" - 6090" - 6096" - 6102" - 6108" - 6114" - 6120" - 6126" - 6132" - 6138" - 6144" - 6150" - 6156" - 6162" - 6168" - 6174" - 6180" - 6186" - 6192" - 6198" - 6204" - 6210" - 6216" - 6222" - 6228" - 6234" - 6240" - 6246" - 6252" - 6258" - 6264" - 6270" - 6276" - 6282" - 6288" - 6294" - 6300" - 6306" - 6312" - 6318" - 6324" - 6330" - 6336" - 6342" - 6348" - 6354" - 6360" - 6366" - 6372" - 6378" - 6384" - 6390" - 6396" - 6402" - 6408" - 6414" - 6420" - 6426" - 6432" - 6438" - 6444" - 6450" - 6456" - 6462" - 6468" - 6474" - 6480" - 6486" - 6492" - 6498" - 6504" - 6510" - 6516" - 6522" - 6528" - 6534" - 6540" - 6546" - 6552" - 6558" - 6564" - 6570" - 6576" - 6582" - 6588" - 6594" - 6600" - 6606" - 6612" - 6618" - 6624" - 6630" - 6636" - 6642" - 6648" - 6654" - 6660" - 6666" - 6672" - 6678" - 6684" - 6690" - 6696" - 6702" - 6708" - 6714" - 6720" - 6726" - 6732" - 6738" - 6744" - 6750" - 6756" - 6762" - 6768" - 6774" - 6780" - 6786" - 6792" - 6798" - 6804" - 6810" - 6816" - 6822" - 6828" - 6834" - 6840" - 6846" - 6852" - 6858" - 6864" - 6870" - 6876" - 6882" - 6888" - 6894" - 6900" - 6906" - 6912" - 6918" - 6924" - 6930" - 6936" - 6942" - 6948"