

## Today's Campus

### Singing Soldiers

One of the best things most freshmen remember about the college is the sight of seemingly thousands of green pots dotting the campus. This year's class will most remember the actual thousands of soldiers dotting the campus in orderly marching columns. And in past years while the most familiar sounds have been those of the volleys in the Union this year they are the more voices of army men singing as they march between classes.

### MSU Alma Mater

One of the familiar tunes of the Michigan State Alma Mater, Michigan State song is as follows:

Close beside the winding Cedar's  
Slopes banks of green;  
Spreads the campus alma mater,  
Faintly green.

Sent the echoes let it echo  
Down hill and vale;  
Beating the air loving mother,  
More and more.

The songs in-  
cluded in the "MSU Fight  
Song" by Glen  
Sullivan, an alumni re-

### With Hells On

One of the first things to be seen and heard on the Michigan State campus is Beaumont

at eleven o'clock and a carillon which forms a picture of the campus when glimpsed through the branches from almost any point on the campus.

At noon, with carillon music, Beaumont strikes four times in the quarter hour, eight times in the hour, 12 for the first quarter hour and 12 times for the rest of the hour.

At the end of the "Alma Mater" and "MSU Shadows" issue has a pretty good indication that Beaumont Denzil is the best of the levers.

### Rationed Hours Plan Adopted for Women

At the keynote to the rationed hours, AWS council adopted a new plan of rationed hours to begin fall term. At the beginning of each term, each woman will be given a rationed hour, covering all the period of the day to be used for the term.

The plan will not include the regular hours of 9 p. m. for freshmen and 10 p. m. for upper classes on week nights and 11 p. m. on Sundays and 12 p. m. on Friday and Saturday.

The coupons will be issued for one night only and college jurisdiction. The coupons, three of which will be issued for the term, are good for a return after a week-end away from the college.

The coupons will be used for delayed returns any evening except Friday and Saturday. Ten will be allowed for a term and they are good for an hour and a half delay.

The coupons will represent five minutes and 12 will be issued for the term. These may be collected by the housemother or house president for poor conduct or late minutes. They may be bought back with "D" coupons or by staying in a week-end night.

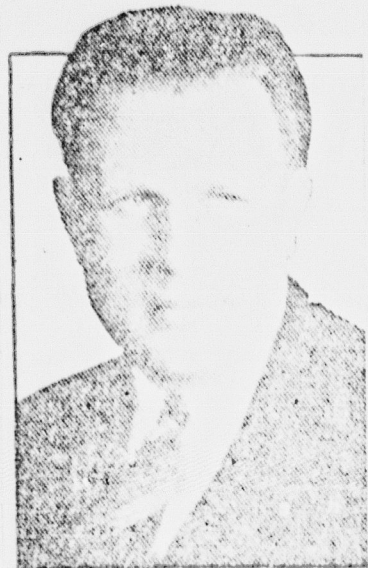
## 1,100 Expected for Freshman Week

### From President Hannah

It is a real pleasure to welcome to Michigan State college the prospective members of the class of 1947.

A changing world and a radical change in America's future part in world affairs provide an added incentive for you to prepare yourselves for a useful part in that future.

President Roosevelt and other national leaders have repeatedly emphasized the importance of young Americans



continuing their educational training. Modern war, no less than modern peace, requires well-trained minds and skilled hands. Our future rests in the hands of the engineers, chemists, physicists, bacteriologists, and other trained scientists. Persons trained and with college degrees in the fields of Veterinary Science, Agriculture, Home Economics, and in Liberal Arts will find themselves in better position to serve in war if necessary and in the following peace, than those without college training. The greatest contribution you can make to America is to proceed with your formal education with a seriousness of purpose and high resolve to acquire as much knowledge both technical and cultural as you can.

The United States army recognized the value of college training and now has over 3000 soldiers on our campus pursuing courses in engineering, languages and foreign areas, veterinary medicine, and preparatory courses for air force training.

We are proud of our beautiful campus, of our buildings and equipment and of our able, conscientious and friendly staff. Our student body has always been noted for its friendly, democratic spirit. Many nationally and internationally known leaders in many fields of endeavor are numbered among our alumni and former students.

What you get from your college experience will be in direct ratio to what you put into it. You have before you a great and challenging opportunity. We are all anxious and willing to help you in every way that we can. We welcome you to membership in our rapidly growing Michigan State family.

## Dorms House 1,088 Women

The housing situation for women at Michigan State has reached an acute status because of the taking over of one dormitory, North Hall, by the army and the increase in women applications.

Most women live in the three dormitories which are located on campus, Louise Campbell, Mary Mayo and Sarah Langdon Williams halls. Total population of the dormitories will reach about 1,088 this year instead of the usual 850. In addition 88 women will be housed in Alice Cowles house, Kappa Sigma and Theta Chi fraternities.

About 300 coeds live in approved rooming houses off campus, and sorority houses are the homes of about 250. About 135 are housed in cooperative houses.

Approximately 350 women live at home in East Lansing and about 20 commute to and from Lansing while about 20 commute to and from campus.

Another group of off-campus residents is composed of women who work for room and board in private homes. There are about 50 in this group.

There are still about 200 on the waiting list for approved rooms but last minute cancellations may provide rooms for these students.

Freshman women are required to live in dormitories insofar as it is possible and are not permitted to live in sorority houses.

## Registration Falls Short of Previous Enrollment

### Activities Will Open Tuesday, Sept. 21; Each New Student to Be Assigned Faculty Adviser for Guidance

Freshman enrollment at Michigan State this year will number an estimated 1,100 to 1,200 students, Registrar R. S. Linton predicted this week.

The total number of freshman students will be slightly lower than that of last year because of the drain on college age men by the draft. However, more women than ever before are registered for the coming school year.

Orientation week for new students will begin Tuesday morning, Sept. 22. Many of the new men beginning school this fall are as yet under age for the various army programs and consequently will be able to complete at least one or two terms of study before being subject to military duty.

More Women Than Ever

One reason for the great number of women who are starting this year in excess of previous years is that parents are making more money in war industries and are better able to afford to send their children to college.

Each incoming student has been assigned an adviser and will follow the week's activities with a group under the supervision of that adviser.

Transfer students and those already registered in summer school will join with others from all over the nation and South American and Pan-American countries to make up the total freshmen to tour campus.

In addition to arranging their schedules and classifying and paying fees, the new students will attend various meetings and tour the campus with the idea of getting acquainted with the college's administration and some of its professors.

Lack of civilian men on campus has greatly decreased the enrollment in some of the college divisions, Linton said. Incomplete figures showed 15 in Agriculture and 34 in Engineering, the two hardest hit by the man shortage.

## Campus Army Groups Total Nearly 3,500

### State Becomes Center for Air Force, AST, Vet Trainees

Michigan State has gone G. I. and the class of 1947 will not remember the old days as it was in the "good old days." But the change is not an unpleasant one.

The campus has always been home of less than 1000 men with various branches of reserve forces. Training corps (CITC) offering instruction to students.

Formerly, all men students were required to take two years of basic military training in one of the branches. Infantry is the only course offered now, and advanced courses were canceled for the present because of lack of men to take them.

Armed Forces Came in March

The lack of men up for by the increased numbers of army men stationed on campus with the various army units receiving training at the college.

Last March approximately 1,500 army air force men came to the campus for a five-month training period. They are now in Green Arbor, dormitory, former men's residence hall, east of the campus.





# MICHIGAN STATE NEWS

Entered as second-class matter at the postoffice, East Lansing, Mich. Office located on ground floor of east wing of Union Building Annex, room 8. Published daily except Sunday and Monday mornings during the regular school year and Wednesday and Saturday mornings during summer session by the students of Michigan State College.  
Member Associated Collegiate Press  
Represented for National Advertising by National Advertising Service, Inc. College Publishers Representative  
420 MADISON AVE. NEW YORK, N. Y.  
and 100 N. BOSTON ST. LOS ANGELES 1, CALIF. - SAN FRANCISCO 1, CALIF.  
Subscription rates—\$4 per copy; \$5.00 per year by mail; \$1.50 per year by college carrier to students; \$2.25 per year by college carrier to non-students.

Member of Associated Press

FACULTY ADVISER  
MANAGING EDITOR  
EDITORIAL DIRECTOR  
BUSINESS MANAGER

A. A. APPELGATE  
NEVA ACKERMAN  
BARBARA DENNISON  
JANE MILLAR

## TRADITIONS

### Reason for Each Is to Improve State

Now more than 80 years old, Michigan State college is rich in traditions which many generations of students leave with any college. As new students, if you know something about these traditions, it will help you to feel at home more quickly.

No one smokes on the campus north of the Red Cedar at Michigan State, with the exception of the Union building and specially designated rooms in buildings. There is no rule against smoking but no one does it on the walks or in the classrooms.

Refraining from smoking on campus helps preserve its beauty, and State's campus is rated as one of the 10 most beautiful in the United States.

Another tradition students adhere to, for the same reason, is that of using the sidewalks so as not to cut paths across lawns. B and G men have scientifically laid out a haze of walks for every destination.

A third tradition is that all freshman men wear green pots, better known as caps, for the first few weeks on campus. By wearing pots, freshmen identify themselves among others and thus become better acquainted. A pot helps just as much on this score with freshman women as an army uniform does with most women. These pots are sold during registration by members of Varsity club, an organization of major letter winners in athletics. Wearing of pots and adherence to the above traditions are enforced by the same organization.

One of the best known traditions among students at MSC is that only engaged couples sit on the engagement bench just north of Beaumont tower, and women are not to be seen at the Smoke Shop. It is man's territory.

More thoroughly adhered to than some rules, these traditions are a part of college life at State. It is the privilege and duty of all new students to maintain and perpetuate them.

## Freshmen—

This Department of  
Michigan State College

*Welcomes You*

We are your SUPPLY BASE for  
TEXT BOOKS and COLLEGE  
MATERIALS



State College Book Store

Department of Michigan State College

## Wolverine Yearbook to Depict MSC in '44

With fall term less than five weeks away, the 1944 Wolverine, which is Michigan State's official yearbook, has begun to take form.



KAY SPRAGUE

Editor for the coming year is Joy Randall, Lansing senior Liberal Arts student, and business manager is Kay Sprague, also a Liberal Arts senior, from Royal Oak.

The Wolverine organization has grown to a sizeable staff. Basically there are the editor and business manager and their assistants. The editorial staff has organizations, classes, copy and photography editors, each of whom has an individual staff working throughout the year on the material it is responsible for.

Persons filling these editorial positions for the coming year will be Dorothy Englehardt, organizations, Lansing sophomore; Doris Englehardt, classes, Lansing sophomore; Sue Averill, Birmingham sophomore; copy and photography, Tom Barber, Chicago, Ill. junior.

The business staff includes Betty Amos, Tuckahoe, N. Y. junior, office manager, and Doug Hard, Farmington senior, sales manager.

There is an opposition (See WOLVERINE, Page 1)



JOY RANDALL

# BEGIN RIGHT!

MSC Welcomes the Class of '47—

For you who are just beginning

Your College Life, it is important

To BEGIN IT RIGHT—

One of the best ways

To do this is to

Invest in a 1944:

Sales Start  
Sept. 23

*In the Union*

**WOLVERINE**

Help celebrate your Yearbook's  
57th year on campus by purchasing  
a WOLVERINE.

You are welcome to visit the  
Yearbook office, room 4, Union  
Annex — Come in and be a part  
of this, and many other  
WOLVERINES to be.

*In spite of rain or shine or war  
There'll Be a WOLVERINE in '44*

JOY RANDALL, Editor

KAY SPRAGUE, Business Manager



# Military Atmosphere Pervades Michigan State Campus

(Continued from Page 1)  
The men of the men will be in the same time. The first group which has been in the second two weeks. But at present, the men are in a full five weeks before being trans-

## Have Little Free Time

The men follow a very strict schedule during the day, and get up at 6 a. m. each day except on weekends. They march to class in uniform, and sing as they march.

From 8 to 9 p. m. each day, they have free time and do not march. On Saturday morning, the men are in uniform from 10 a. m. to 12 p. m. Sunday is their day of free time.

They are taking a pre-preparatory course at State before going to the military training camp at Fort Benning, Ga.

Capt. Carl E. Modglin is commanding officer of the 310th Central Postal Directory, which is the official name of the unit stationed at MSC. The men are mostly students who are going directly from high school to the country in the army.

## AST Men Came in July

The second group of army men on campus, the AST unit, or Army Service Training group, came in July. They are the en-

gineers and the language area students. The men in the division are in college for anywhere from a few weeks to two or three terms.

The engineers take either basic or advanced work in engineering courses, according to their degree of advancement in the work before coming to MSC.

Those in the AST unit who are taking the language area courses are studying the languages, geography, politics and customs of the various countries which may be under Allied control some time. They are studying the European mainland countries.

These men arrived on the campus in July. They are quartered in Wells hall, also a former men's dormitory, located in the center of the campus, and in several of the fraternity houses throughout East Lansing.

## Colonel Egger Is Commandant

Hours for these men are a little more relaxed than those for the former group, but they have weekends almost the same. Their daily free time is from 5 to 8 p. m., and after their parade at 1 p. m. Saturday they are free until 8 p. m. Sunday.

Col. Grover B. Egger, who came to MSC Sept. 1 from Chicago, where he was connected with the sixth service command, is commandant for all military units on campus, and Lt. Robert Smeltzer is special service officer for the AST.

Approximately 250 more AST men are expected to arrive on campus in time to begin the October term of that unit. They will be housed in a fraternity house and two off-campus houses formerly used for men's cooperatives, Hedrick and Elworth houses.

## Vets. ROTCs Complete List

Two groups of army men on the MSC campus represent the college itself. One consists of 150 Veterinary students, who have been put in uniform while they are being allowed to finish their college courses, because of the nature of their work.

These men keep regular hours the same as the other army groups, stationed at the college, but they do not march to class.

as the aircrewmen and AST men do.

The most recently arrived group on campus is the former junior ROTC students, who have been returned to State in the past few days to take up college work again under the AST program while awaiting vacancies in Officer Candidate schools.

These men number approximately 250, who were students at State until last April when they went into the army with the call of all enlisted reservists.

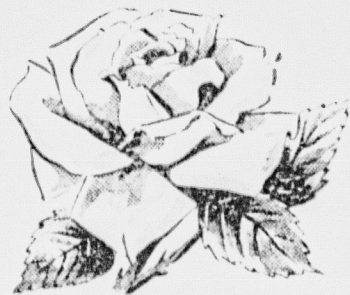
Since then they have been taking their basic training at army camps all over the country. The cutting down of officer training has left no vacancies for them and consequently they are being returned to school while awaiting the opportunity for advanced training.

On the whole, MSC is strictly G. I. military and marching khaki, with a total of well over 3,000 men stationed on the campus with the several army training programs.

## Wanted

Freshman students to carry Michigan State News routes before 8 a. m. every morning except Sunday and Monday. Write Jane Walker, Circulation Manager, 25 Leander Road, Rochester, N. Y., before Sept. 12.

Invest in Victory—Buy Bonds



## Freshmen

## Welcome to

M S C

and

## Jewett's

The Friendly Spirit of State's Campus Holds True in our Flower Shop. Drop in and see us when you arrive in East Lansing. It's

**Jewett's**  
For Flowers

Reid Milligan, Manager

128 W. Grand River — Phone 8-3151



## More than a Barber

Shop—a college

tradition.

**HANK and FRANK**

Have Been Barbers to State Students for 30 Years.

UNION ANNEX

## INVEST IN THE FUTURE

Keep on Buying More

## WAR BONDS

WELCOME, FRESHMEN!

We have been serving Michigan State College for 27 years.  
We stand ready to serve you.

**East Lansing State Bank**

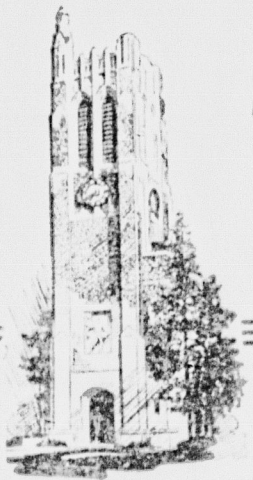
*A Friendly Institution*





# In War and Peace MICHIGAN STATE COLLEGE

## Serves Humanity



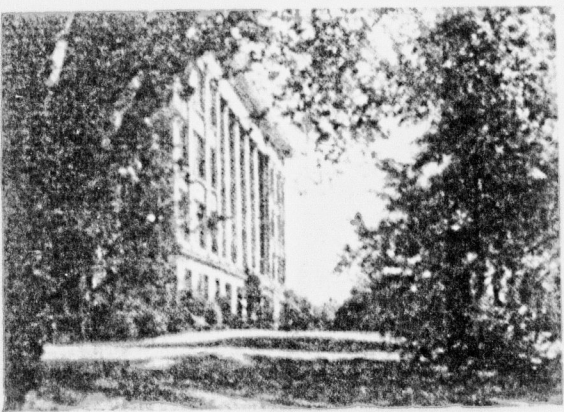
Beaumont Memorial Tower occupies the central spot on the Michigan State College campus. To faculty, alumni, and former students it symbolizes the spirit of the Spartan men and women.

**A**S THE oldest land grant college in the United States and the oldest agricultural college in the world, Michigan State College offers a technical, practical, and cultural education to its student body of soldiers and civilians.

In the 88 years since its founding in 1855, Michigan State College has grown from one building and four faculty members to a progressive university with an educational program that includes the adult and youth, the scientist and the non-technical man, the agriculturist and the engineer, the homemaker and the dietitian, the businessman and the teacher. It has approximately 137 modern buildings and more than 2,500 acres of land. These provide facilities for training men and women for war and peace.

Eighty-eight years ago the courses of study at Michigan State College consisted largely of cultivating the college grounds. Most of the labor was done by students, removing of stumps, digging ditches through the new clearings and cultivating cleared land. Today, the course of study is divided into six major divisions. They are agriculture, engineering, veterinary science, home economics, applied science, and liberal arts. Among the 70 departments of study within these divisions are business administration, medical biology, journalism, physical education for men and women, public school music, hotel administration, police administration, and forestry. In addition, students may follow prescribed courses in pre-medicine, pre-dentistry, and pre-law.

The graduate school provides opportunity for students to enroll in courses leading to the degree of master of arts or of science and doctor of philosophy.



Agriculture

War has brought many changes to the academic structure of Michigan State College. The division of agriculture has established courses to train men and women for specialized work in agriculture, including food production. In addition, more than 30 short courses, special courses, and conferences are offered during the year.

The division of applied science provides special courses in physics, chemistry, zoography, radio, meteorology, and photogrammetry. These courses are a part of the curriculum for the several Army training detachments on the Michigan State College campus. Michigan State's physical fitness program, designed to train men for combat service, has been designated by Army officials as second to none in the country.

In engineering, Michigan State College offers training to students in chemical and metallurgical engineering, civil and sanitary engineering, electrical and mechanical engineering. Since war began, the engineering division has been offering a series of short, intensive engineering courses for men in war industries. These twelve-week courses are usually given at night.

The home economics division offers courses in clothing, foods and nutrition, institution administration, related arts, and vocational education in homemaking. The division also offers a five-year course in home economics and nursing given in cooperation with the local hospital. War has created many demands on the division of home economics. Refresher courses and institutes are given throughout the year to help bring to home economists in Michigan the newest information which, in turn, can be taken to local communities.

The liberal arts students may follow courses in applied music, business administration, police administration, public school music, pre-law, pre-medical, and pre-dental. War times courses introduced include Economics of War, Contemporary History, Psychology of War, Elementary and Advanced Navigation, Japanese, Russian, Arabic, and Portuguese.

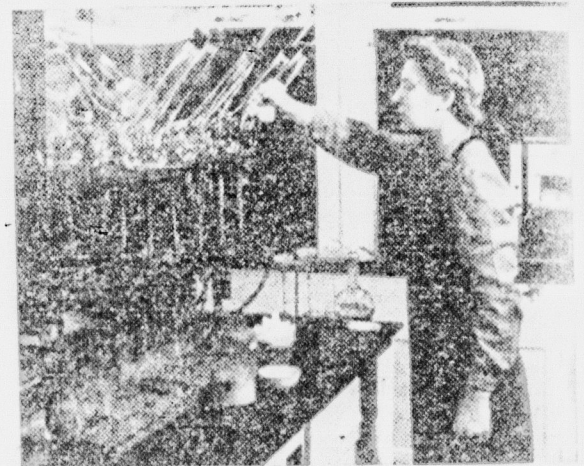
The veterinary science division has been requested by the United States Government to operate on an accelerated basis during war time. On this basis, it is possible for veterinary students to complete the four-year course in three calendar years. Demands for veterinary graduates by the Army, civil service, and private practices are greater than at any other time in the past.

A two-year general curriculum is offered at Michigan State College. It provides a general education for students not planning to remain in college more than two years. With proper selection of courses, the two-year general curriculum may serve as a foundation for further academic study should the student decide later to continue work toward a degree. Admissions to the general curriculum from out-of-state are determined by the out-of-state admissions committee. Courses in the general curriculum include Survey of Human Biology, Introduction of Survey Science, Survey of Physical Science, Introduction to the Arts, English, and Speech.

The health of the student body is under the supervision of the Health Service on the campus. This includes a modern hospital with a capacity of 60 beds and a dispensary located in the hospital. All full-time students are entitled to advice and treat-

ment, a medical examination by appointment and 60 days of free care in the college hospital each year.

Michigan State College exerts every effort to assist the student in starting a college career that will be a successful one. Approximately 200 of the



Laboratory

faculty give liberally of their time to serve as freshman advisers during freshman week and throughout their freshman and sophomore years. Department heads serve as advisers to junior and senior students who specialize in the various departments.

To keep pace with increased enrollments at Michigan State College during the past decade, many buildings have been constructed costing more than \$2,000,000. Prior to the war, the civilian enrollment reached approximately 7,000 with a teaching staff of about 500. In addition 363 men and women are engaged in extension, experimental and research work.

Army schools represented are the Air Force Detachment and the Army Specialized Training Program, which includes engineers, area and language students, veterinary students, and pre-medical students. The Army began operating its first school at Michigan State College in April, 1943. These students receive degree credit for work completed at Michigan State College. The soldiers have the privilege of transferring the credit to any school where they desire to continue their education following release from the Army.

College and university accrediting agencies have placed their stamp of approval on Michigan State College as a class A institution. These agencies include the North Central Association of Colleges and Secondary Schools, the Association of American Universities, the Association of American University Women, the National Association of Schools of Music, and the Society for the Promotion of Engineering Education.

For additional information on how Michigan State College serves its student body in war and in peace, send your request to the office of the Registrar, Robert S. Linton.

# MICHIGAN STATE COLLEGE . . . EAST LANSING

## Teaching . . . . Research . . . . . Extension



# Famous Personages Will Be Heard at MSC in 1943-44

## College Lecture Series Lists 10 Performers for Season

Headlined by such famous names as Cecil Brown, Edward Weeks, Jan Struther and the Ballet Theater, the 1943-44 college lecture series will bring 10 numbers to Michigan State college.

World Adventure series programs will fill in Saturday evenings when no program is scheduled for the lecture series.

First of the 10 performers will be a lecture by Jan Struther, author of "Mrs. Miniver," which program is listed for Tuesday, Oct. 12.

The Charles F. Wagner opera company will give a performance.



Edward Weeks

The opera, "Faust," Saturday, Oct. 16, at the college auditorium. The opera features Metropolitan Opera and a symphony orchestra.

Its commentator to appear, Cecil Brown, is listed as the commentator for Saturday, Oct. 16.

Brown is well known as a commentator. The Cleveland symphony orchestra, conducted by Erich Leinsdorf, will present a concert, Friday, Nov. 12, and Edward Weeks, of the Atlantic City, is the lecturer for Saturday, Nov. 13.

Most imposing number of the series will be the Ballet Theater (Russian ballet) in a repeat performance from last year. The same ballet company will appear but will present different selections.

### Ballet Is Great Group

The ballet program is scheduled for Tuesday, Nov. 30. Critics acclaim this the greatest aggregation ever assembled. The Ballet Theater has appeared at the Metropolitan Opera house in New York on several occasions and this fall begins a transcontinental tour.

Sigmund Romberg and his concert orchestra, famous for such operettas as "The Student Prince," "Maytime," "New Moon," and "Blossom Time," will fill the series list for Saturday, Dec. 11.

Science editor of Time magazine, Gerald Wendt will lecture.



Jan Struther

Tuesday, Feb. 22, and Margaret Bourke-White will return to the college for a repeat performance on Saturday, March 11. Mrs. Bourke-White spoke on the series course last year.

Author Editor to Speak: Philip Kimbrough, co-author

of "Our Hearts Were Young and Gay" and former editor of the Ladies' Home Journal, will give the final lecture of the regularly scheduled series on Thursday, March 30.

World Adventure series programs, which will supplement the lecture course for the year, include speakers and travel movies, some of which are shown accompanying a lecture.

First program on the World Adventure series will be Ava Hamilton, singer, presenting "Africa" on Oct. 7, followed by Julian Gromer with a lecture on Mexico Oct. 23.

November programs will include C. J. Albrecht Nov. 6. Albrecht is a well known explorer,

photographer and zoologist and is animal sculptor of Field museum in Chicago.

### Four Lectures in January

"This Land of Ours" will be Francis Line's topic for his lecture Nov. 13, and Bob Friars, speaking on "South American Adventure," will complete the month's numbers Nov. 27.

Last program for the term will be "Wings Over Norway" by Mrs. H. N. Englund on Dec. 4.

Four numbers in January will start the series for winter term. These include Percy Weimer, presenting "The Cavalcade of South America," Jan. 8; John and Winifred Walker with "As (See LECTURE Page 7)

You Will Find a Great Variety of Attractive

## STATIONERY

COLLEGE  
AIR-MAIL  
AND  
GENERAL  
AT

THE *Ink Pot*  
STUDENTS  
SUPPLIES  
East Lansing, Mich.

# WELCOME CLASS of '47

May your college days be happy and successful.

A traditional good-wish from a traditionally good eating place.

## Will You Help?

This is a war year — yes, but let's keep the atmosphere as collegiate as we can. We need help in keeping your favorite 'hangout' up to its traditionally high standards—come in and work — it's fun! it's profitable!

Across from Union, Conveniently Located for Between Class Cokes

## RUGGED SHOES

FOR

WAR TIME

CAMPUS WEAR

More than ever before comfort and wear are necessary requisites in the shoes you wear to college. During the past 16 years of service to the men and women of STATE our policy has never varied. "Good Shoes Well Fitted" has made us lasting friends.

*DeCamp's*  
EAST LANSING  
MICHIGAN

203 E. GRAND RIVER



## Varied Facilities Make Union Center of All Student Activity

If one could be satisfied with catch-as-catch-can cat naps he could live in the Union building for quite some time.

Not that anyone does, of course, but it illustrates the variety of facilities centered in this Spartan focal point of student activity.

"I'll meet you in the Union" is a phrase that has become a campus byword.

### Has Variety of Services

In the Union one can buy a coke and a meal, get a haircut, read a newspaper, buy a year-book, arrange a loan, buy a magazine, sell a textbook, attend a party, work on a newspaper, study, attend a meeting, powder her nose, play bridge, relax, take a shower (in a town women's smoke or go to classes.

These facilities include a grill, which offers fountain service and light lunches, a cafeteria and a service dining room. There are four lounges, one of which is reserved for women, and that is where most of the bridge playing goes on.

The Union desk sells candy, tobacco, magazines, school supplies, and deals in used textbooks. On the cafeteria level is

a lost and found department and a checkroom.

### Contains Publications

The Union annex, or east wing of the building contains classrooms, the State News, Spartan and Wolverine offices, and offices of the dean of men, men's housing director, and director of alumni relations. The art department is located on the top two floors of the annex.

Located upstairs in the west wing of the building is a ball room, the service dining room, meeting rooms, town girls' room, and faculty club rooms.

### Million Dollar Plant

Jenison fieldhouse and gymnasium is one of the largest and best equipped physical education and athletic plants in the country.

Built at a cost of more than a million dollars, it contains a fieldhouse and indoor track which will seat a capacity of 12,000 persons. There are three complete basketball courts in the gymnasium.

## Stewart Saves All 'Lost Souls' With New Set of Maps

Freshmen won't even have an excuse for getting lost this year. Announcement has been made that a pamphlet containing not one, but three maps will be distributed to all newcomers, along with the rest of their course planning material.

One map shows all buildings on the campus with numbers and a brief description and history of each. A second shows East Lansing, with streets located by cross lettering.

The third inset gives the location of college stations in the rest of the state.

Glen O. Stewart, director of alumni relations, put the idea into operation a year ago and directed the NYA project that drew up the maps.

The maps were recently revised by a committee headed by Stewart and Ward A. Davenport, of the buildings and grounds department.

The map folders will be made available all through the year to students, alumni, and visitors at the office of the registrar.

### Health Center Provides Student Medical Care

Although Freshmen will not be required this fall to take the usual physical examination because of crowded facilities, opportunity should be taken soon to become acquainted with the college health center, Olin Memorial hospital.

Located on the campus, the hospital provides excellent care for all students needing medical attention with a staff of doctors and nurses headed by Dr. C. F. Holland.

## WOLVERINE YEAR BOOK

(Continued from Page 2) former high school yearbook staff members and other interested persons to join in the work of producing a large publication such as the Wolverine.

Something new for the Wolverine this year will be a section for the army groups stationed on campus, including pictures of the men, how they live, what they do and other phases of their campus life.

Theme for the book this year

is "Michigan State Answer to War Challenge." A sales campaign will get under way at the beginning of October week and will continue throughout the year.

Olds Hall of Engineering named after Ransom F. Olds founder of the Olds Motor Works.

Michigan State's campus rated as one of the ten most beautiful in the United States.

## NOW READY FOR DELIVERY—

### The New Hinson Valet Gladstone

- Carries Suits Wrinkle-Free on Hangers
- Built Especially for Service Men
- Pocket for Shirts, Ties, Handkerchiefs
- Compartment for Shoes

Special Zipper Installation

Two Models Now Available

ALSO

HINON FURLOUGH BAGS

in waterproofed duck, 16 in. long

Special Price \$1.69

## ROGERS LEATHER GOODS STORE

No. 6, Michigan Arcade

H.P. 2-3-4—

Hi, Freshmen—That's what you'll be saying on your way to the

## OXFORD SHOP

Everything in Dress Accessories and Gifts for Any Occasion.

222 ABBOTT ROAD — EAST LANSING

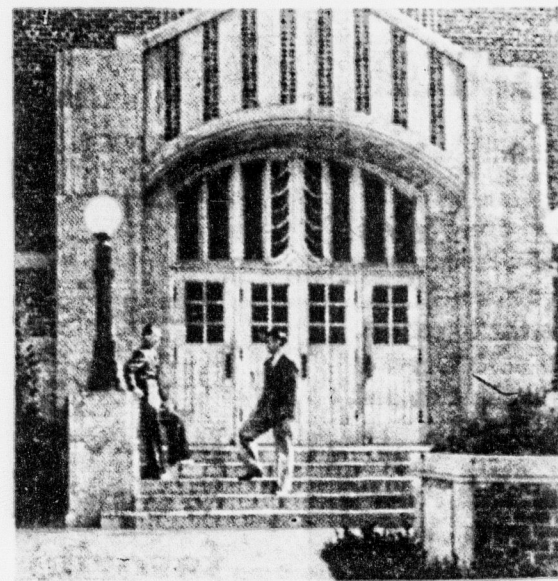
# UNION GRILL UNION DESK UNION CAFETERIA

—For Quick Cokes, Lunches, Special Dates.

—For School Supplies, Tobacco, Magazines, Candy.

—For Good Food at Reasonable Prices.

Union Memorial Building—The Most Popular Spot on Campus



## PARENTS and VISITORS

When you visit your son or daughter at Michigan State College you'll find the hotel facilities of the Union at your convenience. Modern, up-to-date hotel rooms at moderate prices—right on the campus.

# WHERE SPARTANS MEET



## College Radio Station Has Fine Studios

High Powered WKAR Broadcasts College Programs

Michigan State's radio station WKAR, which is one of the most powerful stations in the state, is a source of entertainment to students and non-students alike.

As well as being an important station, WKAR is also a source of information. It includes three offices, a transcription room and a room for control panels.

The station cooperates closely with college departments, the extension service of the college and the college experiment station, as well as with departments of state.

The station cooperates closely with college departments, the extension service of the college and the college experiment station, as well as with departments of state.

### Local YWCA Provides Big Activity Program for Spartan Women

The YWCA at Michigan State college plays a prominent part in extracurricular activities of a large number of woman students. Membership is open to all women, and both sorority and independent women work on a common basis in the organization.

Widening the social and educational scope of the college woman is the main purpose of the organization. During the year "YW" sponsors many events, including a ten late fall term to introduce freshman women to members and to faculty members.

Every other week, YWCA members meet in groups to discuss particular subjects or plan their part in some program.

Invest in Victory—Buy War Bonds and Stamps.

## LECTURE

(Continued from Page 5)  
"Fondling Australia" Jan. 15, and "Northwoods Adventure" by Miss Deusing, Jan. 22. Sam Campbell will end the month Jan. 29 with the "Human Side of Nature."

February Filled

Another full month in February will be headlined by Jocelyn Crane presenting "Jungle Rainbow," Feb. 5. Other performances for the month include W. L. Husband, Feb. 12, with a lecture on postwar housing, Herbert and Eleanor Ullman, will give "Scenes by the Wayside in the United States," a travel lecture, Feb. 19.

Completing the month's numbers will be "Footsteps to Benares," a lecture scheduled for Feb. 26.

The series will close for the year with two performances in April, the first of which is Mrs. Jules Mamix, who will speak on "Noah's Ark," April 8, and Cleveland Grant, lecturing on "American Birds," April 22.

## Local Mailmen Have Busy Time

More than 9,000 letters and postcards on a day's average, handled by the East Lansing postoffice during the school year, give evidence that Michigan State students do not entirely neglect the folks at home during the rush of school activities.

Business for East Lansing postmen has increased proportionately with Michigan State enrollment for the past decade, until fiscal statements total around a \$70,000 volume for a year's time.

Sixteen regular employees are under the supervision of Postmaster Earl E. Young, who sees that letters are kept in proper channels going from mothers to sons or sons to sweethearts.

Incorrectly addressed mail both from students and parents is the postman's biggest headache.

If you don't like East Lansing weather, wait a minute. It'll change.

## Freshmen —

For top notch service in Dry Cleaning

Visit

# HICKS CLEANERS

323 E. Grand River

Ph. 3-2911

## WELCOME CLASS OF '47 —

From Your Own Daily Newspaper

## The Spotlight's on You

You are news at Michigan State. What you do makes headlines, because the MICHIGAN STATE NEWS is a student newspaper, run by students, for the students. Every morning except Sunday and Monday your newspaper brings you complete details of student activities and up-to-the minute coverage on worldwide events. It tells you what has happened and what is going to happen. The MICHIGAN STATE NEWS is as much a part of Michigan State as textbooks and lecture notes.

Here are some of the reasons why you'll find that you can't get along without it:

- ① Associated Press for complete off-campus news coverage.
- ② AP news pictures for the pictorial side of the news.
- ③ Complete campus coverage of college events and activities.
- ④ Today's Campus for a lively column of local happenings.
- ⑤ "Grin and Bear It," by Lichty, for a daily laugh.
- ⑥ In Campus Quarters—a society page in miniature.

Everybody Reads The—

# MICHIGAN STATE NEWS

### TO THE PARENTS:

You will want to keep in touch with the College your son or daughter is attending. A subscription to the MICHIGAN STATE NEWS will be just the thing to bring the Spartan campus into your home.

Mail subscription, \$3.00 per year.

## Michigan State News

Make Our  
Store Your  
Headquarters  
for

"Everything in  
Music"

VICTOR  
COLUMBIA  
BLUE BIRD  
DECCA  
ORION  
RECORDS

and RCA VICTOR, PHILCO,  
CROSLY RADIOS and  
COMBINATIONS

Buda's Music House

"Everything in Music"

218 S. Wash. Ave. Tel. 4-6615



## Lansing



## State News Receives Daily AP News Coverage

### Freshman Week Social Calendar

#### TUESDAY, SEPTEMBER 21

East Lansing Town (Lansing and East Lansing) girls, 3 to 5 p. m. Town Girls' room, fourth floor, Union.  
Freshman party for transfer and woman students, 7:30 to 10 p. m. women's parlors, Peoples church.  
Freshman residence for men, 7:30 to 9:30 p. m., Peoples church.  
Freshman get-together in each women's dorm and co-ops, 10 to 11 p. m.

#### WEDNESDAY, SEPTEMBER 22

YMCA supper for men, 6 to 7:30 p. m., dining room, Peoples church.  
Interfraternity council smoker for men, all new men students interested in fraternities, Union ballroom, 8 p. m.  
Freshman and upperclass counsellors' tea, 8 to 9:15 p. m., Williams dormitory.

#### THURSDAY, SEPTEMBER 23

Society fishing and membership explained, 7 to 8 p. m., Morse auditorium. (For all women who have paid \$1 entrance fee.)  
Student club party, 8 to 9:15 p. m., Peoples church.  
Interfraternity club party, 8 to 9:15 p. m., Canterbury house, 441 Abbott road. For Episcopalians and friends.  
Science organization meeting, 8 to 9:15 p. m., Peoples church.  
Student organization, 8 to 9:15 p. m., Spartan room, Union.  
Freshman student club party, 8 to 9:15 p. m., organization room, 2, third floor, Union.  
Freshman mixer, 8 to 9:15 p. m., Little theater, Home.  
For all Catholic students.

#### FRIDAY, SEPTEMBER 24

Freshman alumni scholarship group meeting, 7 to 8 p. m., Union rooms 1 and 2, Union.  
Freshman mixer, 8 p. m., College auditorium. Open to all students upon presentation of identification card and to new students.

#### SATURDAY, SEPTEMBER 25

Alumni dance, 9 to 12 p. m., College auditorium. Open to all students upon presentation of identification card and to new students in uniform.  
Men and women students may come singly, by couples, or in groups to these events.  
Freshman women must be in their residences by 9:30 p. m. Monday through Thursday and by 12:30 a. m. Friday and Saturday of Freshman week.)

### Three Will Head '43-'44 State News



NEVA ACKERMAN  
managing editor



JANE MILLER  
business manager



BARBARA DENNISON  
editorial director

### Band Makes Plans for Pop Concerts

Pop concerts presented for the first time last winter and spring by the Michigan State band, proved so popular that a plan is being considered to prepare one for presentation each month during the coming year, Prof. Roy Underwood, head of the college music department announced.

Attendance at the three given last year doubled each time and if their popularity continues, they will be given regularly this year. The first concert is listed tentatively for November, with one following regularly each month all year.

Informality was the key note of the pop concerts. Music was not limited to all classical or all popular, but included selections from each, with some group singing, student directing, and other informal proceedings.

### MSC Paper Enters Second Year of Daily Publication

#### Varied Services Give Michigan State News High Ranking Among College Newspapers

The Michigan State News, college student newspaper, will resume its second year of daily publication on Sept. 28 and will continue to bring college students up-to-the-minute news of the campus and the world.

Election to membership into Associated Press last year enables the Michigan State News to receive complete world-wide news coverage by a direct wire, an up-to-the-minute news picture service and the Wide World feature service.

#### State News Lends Opportunity for Work and Fun

The end of the first year of the Michigan State News as a daily paper climaxes a period of 62 years during which the college student publication grew from an unpredictable bi-weekly to its present status.

Appearing every morning except Sunday and Monday, the Michigan State News will bring to the student body all the latest happenings both from the campus and the world news fronts.

The organization which makes this possible is entirely student manned and controlled. Heading the organization is the managing editor who coordinates the duties of the editorial and business departments. The latter departments are run by an editorial director and business manager.

#### Real Experience

Thus, two avenues of advancement are open to the student who wants a taste of real newspaper life. There is the editorial side of the paper—reporting, writing and rewriting and general handling of the actual news content of the paper. The other is the business end, proving experience in writing and selling advertising, billing and collections, circulation and other business angles of the paper.

Many positions will be open to freshmen, both male and female, this year in both departments. For those who keep at it and make good, high salaried positions are at the top of the heap in junior and senior years.

#### Paper Rated Highly

For the past 10 years the Michigan State News has been rated among the 10 best college newspapers in the nation. And at the present time many of its former editors, reporters and business managers blanket the state and country as successful newspaper and advertising employees and executives.

All of which goes to prove the Michigan State News is good hard work when there's work to be done and lots of fun when the work is all done, as the saying goes.

For the benefit of enterprising freshmen, both male and female, the Michigan State News office is located in the Union annex, room 8. Managing editor of the paper is Neva Ackerman, Unionville senior; Barbara Dennison, East Lansing junior, is editorial director, and business manager is Jane Miller, Bay City senior.

### Parking Regulations To Remain the Same

Student and faculty parking rules for the regular school year will be the same as in past years, according to the campus police.

Students who drive cars on campus are to use the parking lots north of the stadium, north of the tennis courts and south of Veterinary clinic at all times.

#### World's Largest Agency

Membership in AP, which is the world's largest news gathering agency, places the State News on an equal footing with the nation's topflight collegiate publications.

The first daily publication of the Michigan State News this fall will be the morning of Sept. 28. The paper is delivered by carriers to all students living in campus dormitories and dorm annexes, sorority and residential houses within the city limits of East Lansing. Students who commute from Lansing, East Lansing rural areas and other towns in the vicinity may pick up their daily paper at the Union desk.

Indicate your local address plainly or your intentions to pick up your copy at the Union desk on the Michigan State News delivery card at the time of registration.

Besides the 1,400 commercial members of the AP, other select college members include Michigan, Wisconsin, Ohio State and Dartmouth.

#### 60 Words per Minute

The teletype machines, which will pound out the news from all over the world at the rate of 60 words per minute, are installed in the News office.

Unlike many other college newspapers which have become wartime casualties, the Michigan State News will continue in operation in full force this year, working for the first time in history with women editors and a staff composed of almost all co-eds.

### Over-100 Faculty Members Serve As Advisers

Getting adjusted to new surroundings and to college life is one of the major problems facing new students. Both students and faculty at Michigan State realize this, and both cooperate in programs designed to help freshmen become oriented as rapidly as possible.

The college conducts separate orientation programs for men and women, and student organizations assist in various ways during Freshman Week and in the period following.

Each new student will be assigned to a faculty adviser who will help him in arranging his classes and his entire program. There are about 100 faculty members serving in this freshman advisory system, of which Prof. S. E. Crowe is chairman.

In addition, upper-class men and women representing various service organizations, including Tower Guard, Mortar Board, and Student council will assist new students during Freshman Week.

### Student Council Message

To begin with, I'd like to compliment you freshmen on the choice of Michigan State as your college. I want to tell you before you realize that congrats are in order, either for thousands of former students and upperclassmen, Michigan State is THE college.

With these congratulations also goes the necessary demand that as much as you are, from now on, to have the honor of being a State student, you must also realize that with honor carries with it responsibilities.

For the analysis of the greatness of a college or university, many things must be taken into consideration, but it is always the quality of students which finally makes it or breaks it. If you had not realized Michigan State as a place which you would be proud to attend you would not have enrolled here. Now it is your problem to maintain the high rating of State for those students yet to come as well as those in the armed forces or those already graduated.

By desiring to comply with this demand, you will be a welcome addition to the student body.

At this time State is a college at war. This is the first time in its history which has to enter under the very unusual conditions which now exist. Many pleasures must be sacrificed with the idea of keeping the standards up during this crisis.

Subjects and activities cannot be taken lightly for they are all under full momentum. But to do the job right is to perform the duty successfully. But keep in mind State has always had a friendly atmosphere, faculty and student body. These we maintain today even under war pressure.

State or any college will give back exactly what is put into it. State can be your big opportunity if you make so. Speaking for Student council, the governing body, welcome you to try.

GORDON HUESCHEN,  
Student Council President.



GORDON HUESCHEN

Student Council President



## WOMEN'S FASHION NOTES

### Women Have Stock Style Trends at MSC Save Part of Your Clothing Budget to Spend in College Shopping Area to Take Advantage of Spartan Fashions

By Leone Seastrom

While pondering over whether or not to pack that fish and fish bowl or just carry them, let's have some mighty serious thinking about what to put in the family trunk with the shiny new Michigan State sticker before starting a college career. This year State women are pretty much concerned with the war and how they can best help to win it, and they're teaming their wardrobes to fit in with the big job ahead.

#### Old Clothes New at College

So first of all, before spending all the money earned during the summer on that super college wardrobe already planned, take a second squint at last year's models—the ones that may be left

behind because they aren't brand new.

After all, we haven't seen them and maybe that deep pleated plaid skirt that is three years old will be the apple of a roommate's eye, because they're mighty scarce now, with thumbs down for the duration on this college gal classic.

#### Sweaters and Skirts Tops

Skirts and sweaters top any college woman's list, and Spartans are no exception. They like skirts pleated, circular, peasant and straight, in plaids, checks, stripes and tweeds, of wools, gabardines and corduroys. Sweaters range in all colors, both pastels and brights—and they're still worn big, but remember, no extremes—and that goes for everything.

Large or fancy knits in sweaters are vetoed by most, but gay Norwegian sweaters and argyles still get a big vote. Anklets to match sweaters, whether plain or argyle, will bring one's S. C. (smooth cord) rating up no small degree.

Fashion designers and the new fur-lined coats they have produced, which are promoted so much this year by leading manufacturers, were heaven-sent to Michigan Staters. The mercury frequently threatens to touch the zero mark around here during the winter and snow usually falls in the middle of first term, so a good warm campus coat (and for double duty, one that has a snap-in lining and can be worn year-round) is a priceless investment that ought to head the lists of necessary items.

Before dashing out to make an 8 o'clock class very many mornings, a person finds that Michigan State weather divides itself pretty much

into three separate divisions—dew, drizzle, and downpour. So come prepared with a good rain outfit. A coat that's treated so it won't lose its rain resistant qualities when cleaned and a hat that will protect the curls or hide the disastrous results will be two of the most popular articles in the wardrobe.

College shops are showing rain hats this year with little cape effects that snap under the chin. They're rapidly gaining in popularity among Staters since they keep hair the way it started to class in the morning.

Boots are needed, of course, and with luck there may still be rubber ones in the closet left from before the war, but for the less fortunate, sheep-lined ski boots keep many a Spartan's feet warm and dry.

As for shoes, wear flats for campus walking. Experience teaches, it always does, but it's much better to know before starting out for that class in the auditorium that it's a long hike and heels just won't make it comfortably or sensibly. Since saddles are restricted, and have been gradually dying out anyway for the last few years, college women are turning to loafers, brouches, ghillies and espadrilles.

Although they whip around campus in loafers, Spartan coeds want some heels to wear for dates, teas, and church. Choose wisely, however; there's only one No. 18 coupon in that ration book.

For over five months, Michigan State has been training army air cadets and since early this summer, army engineers and language students. Squadrons march all over the campus on their way to classes singing army songs and keeping step with the loud hoot, heet, hut of the squadron leader. They are the same swell fellows who entered the service after high school or have been called from colleges all over the country.

#### Flattery in Black

This will call for one dress that gives the impression of a "dream walking" for extra special teas and dates. This might be a black because it's particularly flattering to most people and easily changed by a piece of jewelry or a little wisp of a hat. Another dress will be needed for that "not too dressy, not too sporty" occasion, and here a soft wool gabardine in the most becoming color, fashioned smart and smooth, will really make a hit.

The actual number of dresses needed is indefinite. However, two or three and a well-tailored

suit will give enough changes to pep up the morale. Now that the war has made the informal party even more important, a wise addition to any wardrobe would be an extra-special skirt with a soft cashmere sweater or blouse that can be worn on dates.

Along with vacations, steaks without ration points and tooth powder in tin cans—formal dances and parties are practically extinct for the duration, so more emphasis on afternoon dresses and less on the dripping formal numbers. One long dress on the dripping formal numbers. One that can go to the sorority preference dinner as (See WOMEN'S FASHION NOTES, Page 14)

## Michigan State Sororities Prepare to Open Formal Rushing Season

Formal sorority rushing at Michigan State will be carried on in much the same manner as last fall, with the 13 sororities holding introductory teas Sunday, Sept. 26. Half of the houses will be open from 2 to 4 p. m. and the remaining half from 4 to 6 p. m.

This plan gives prospective rushees a chance to look over the sororities and at the same time gives the sororities a chance to choose women to rush at future parties. No woman is expected to stay at any one house for an extended length of time, but to go to as many as possible each two-hour period.

In order to be considered for formal rushing, women must pay a dollar rushing fee, which may be sent by money order to Mrs. Joseph Gagnier, 604 West Main street, Lansing, Mich.

Women who have not paid the dollar rushing fee may do so Friday, Sept. 24, from 9 a. m. to 5 p. m. at the PanHellenic office.

Union annex. Any person, man or upperclassman, who is interested in rushing, may attend the convocation Tuesday week, whether she has paid the fee or not.

On Thursday of Freshman week, a convocation will be held for all interested women, which time Mrs. Gagnier will explain rushing and answer questions that may arise.

Invitations for the formal should be picked up at the Hel office Friday, and must have them before they be admitted to the tea. The Hellenic handbook will also be given out when the invitations are called for.

The 13 sororities at State are Alpha Chi Omega, Alpha Delta, Alpha Delta, Alpha Omicron, Alpha Phi, Alpha Xi Delta, Omega, Delta Zeta, Epsilon, Kappa Alpha Theta, Kappa Kappa Gamma, Kappa Kappa and Zeta Tau Alpha.

## Very Special

IS THE

## MARJORIE DEE SHOP

When Seeking Gifts for  
Special Folks.

So Include it in Your Early Sightseeing.

228 ABBOTT ROAD

On the Corner, Diagonally Across From the State Theatre

Hours 10:00 A. M. to 6:00 P. M.

## JUST SMILE And Say, Hello!

We can't take your picture every time you smile but you will smile with pleasure every time we take your picture.

Come in and get acquainted. We may be short on film but we're glad to see you any way.

## The HUB Studio

321 EAST GRAND RIVER

#### THE NAME

*Twichell's*

STANDS FOR

Many years of

service to

STATE STUDENTS

For excellent dry cleaning  
and expert tailoring

SEE



**TWICHELLS**

221 M. A. C.

PHONE 8-1812

Michigan State college is the oldest agricultural college in the world and the first land grant college in the United States. Classes were begun at State, then called Michigan Agricultural college, in May, 1826.

## THE SMOKE SHOP

"Where the Fellows Get Together"

FOR MORE THAN 25 years Charley Washburn's SMOKE SHOP has been the meeting place for M S C men—for tobacco, for recreation, and for just plain bull sessions.

YOU'LL LIKE the friendly Spartan spirit of the SMOKE SHOP. You'll enjoy the billiard tables and the lunch counter. The SMOKE SHOP is one place where you can find nearly anything you need.

TOBACCO — MAGAZINES — PIPES — LIGHT LUNCHES

SCHOOL SUPPLIES — TOILET ARTICLES

LAUNDRY SERVICE

You'll want to get into the Smoke Shop tradition

107 South  
Washington  
Ave.

Lugg



# BMOG to BWOC Tells Tale Of Campus Personalities

## Infiltration Into Men's Jobs Becomes Common

In the army they have big shots, in the navy they have big shots, in Washington they have big shots . . . everywhere they have big shots, even in East Lansing. Only in East Lansing they are known as BMOG's and BWOC's (Big Men and Women on Campus). Instead of generals and coordinators and bureau chiefs.

Some of the WPBs and OPAs are now doing a great job of running the student government, and the persons in charge are a great responsibility for the smooth running of the affairs.

There is a scarce article in the paper that one of the most important male students on campus should receive priority in a women's office. He is president of the student body and is a member of the governing body of the student body.

### Herschel Council President

Gordon Herschen, one of the most distinguished gentlemen at the end of the Union grill, whose smile comes out from under a broad brow, holds this position.

The automatic trend in the way of campus leadership, due to the same measure to the increasing number of women in campus positions, is held by men. It is the first time in the history of the three great student publications are being edited by women, with the exception of Chuck Calkins, the only man who can claim a record.

### First Woman Business Manager

The new business manager from the State office, who is evidence of the fact that she is thinking of making a joke about the business manager's position.

More women . . . (See BWOC's, Page 12)

browbeating her ad staff into submission as the first woman business manager in the history of the humor magazine.

Next door at the State News office, down in publications row, beating away at broken down typewriters, are MSC's aspiring journalists and what not.

### State News All Feminine

Amid the din of the AP teletype machine, Neva Ackerman, another first in the history of State publications, efficiently coordinates business and editorial affairs of the paper as managing editor.

Barbara Dennison, editorial director, attempts to bang out a column which will leave all parties neutral, and Jane Millar, business manager, occupies the next room checking ad contracts.

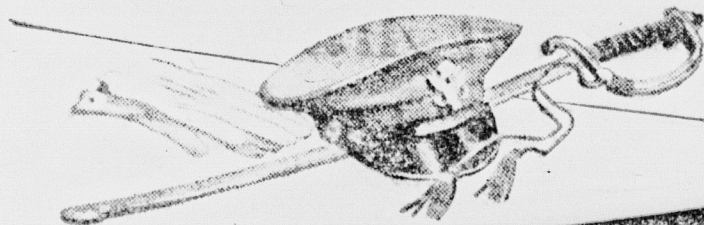
Handling the daily issues of the State News are the four assistant editors. A fifth will be appointed this fall. For the present Lois Barnes, Peg Middlemiss, Jean Bugai and Kay Besemer daily hunt for janitors to sweep the office while they edit yard of copy.

### Women Head Wolverine

Fun-loving, happy-go-lucky Leone Seastrom is filling the shoes of women's editor for the paper this year.

At the other end of Publications Row is the Wolverine office, which the chubby girl with the grin occupies as editor. She is Joy Randall, capably assisted by Kay Sprague, business manager, who is always ready to make a deal.

More women . . . (See BWOC's, Page 12)



To college men working for a commission in 1943?



SHAGLAND (left)

Diagonal Shagland type fabric. Soft to the touch, and easy to wear. \$45

SPORT COAT

Plaids and Verticals . . . a necessity for every man in college. \$16.50 up

COVERT (right)

The eternal favorite of college men. Natural and brown shades. \$45

Your clothing problem today is a serious one. We know that. And we want to do everything we can to be of help during your stay at MSC.

This is no time to take chances with low-priced merchandise . . . even though you may be pretty sure that your next suit may be a uniform, don't let that affect the quality of the clothing you choose now for the months you'll still be active in civilian life. Now, more than ever, it will pay you to be very careful and insist on merchandise that carries a well-known label like that of Hart Schaffner & Marx.

The three garments shown in the illustration are typical of the young men's wearables you'll find in our clothing department.

Quality Shirts, Pajamas and Sportswear by Manhattan

# SMALL'S

211 SOUTH WASHINGTON AVENUE

Home of Hart Schaffner & Marx Clothes



## Campus Bags

This fall you'll swing a handsome tailored bag from the shoulder of your new suit. Fashioned from sturdy alligator calf leather in all the popular colors.

2.95

Others 1.95-7.95

—:—

107 South Washington Ave.

Liebermann's

Near Michigan Ave.

Luggage Leather Goods Trunks Grips



# Topflight Musical Artists Will Perform Here in 1943-44

## Violinists, String Quartet to Highlight Concert Series

Eight Outstanding Numbers Booked to Appear on Music Auditorium Stage

In a series of four concerts scheduled for 1943-44, outstanding musical artists will appear in Music auditorium for a newly planned concert series.

Distinctly separate from the college lecture series, the programs will be presented mainly for the enjoyment of music students and faculty especially interested in fine music.

Musical programs of greater public appeal have been included in the college lecture series and are open to the public in College Auditorium.

First of the four selections given on the music series will be Bronislaw Huberman, noted violinist, who will appear Nov. 2. Born near Warsaw in 1882, he began to play the violin at the age of six. One year later he performed a Spohr concerto and played in a string quartet. Concert career began at 11.

In 1932 he was sent to Berlin to study and later studied in

Paris. His concert career began when he was 11, with recitals in Holland, Belgium, Paris, London and Berlin. World famous for his performance of the "Brahms Concerto," he played it with Brahms himself in the audience. Afterward, Brahms embraced him, saying "This is the way the concerto appeared to me, too."

After such successes as this, he made many concert tours in Austria, Germany, Italy, Russia, England and America, proving that his capacity to conquer was inexhaustible. In Italy in 1903 he was invited by the city of Genoa to play Paganini's own violin.

Huberman became the subject for newspaper comment in 1933 when he denounced the Nazi regime in Germany by declining an invitation to play in the country, saying he could never step into a country where oppression and tyranny ruled.

He has appeared with many major orchestras and his recordings include the great masterpieces for violin.

**String Quartet Listed**  
The world famous Budapest String Quartet will begin winter term for the series on Jan. 13.

Composed of two violins, a viola and a cello, the quartet is one of the best known in musical circles.



Sigmund Romberg

Violinists Josef Roisman and Alexander Schneider, cellist Mischa Schneider and viola player Boris Kroyt will appear in the program.

Lotte Lehman, famed soprano singer, will appear March 14 as a feature of the music series program. Born in Germany, Miss

Lehman's first success came when she substituted for the role of Elsa.

In 1916 she was engaged by the Vienna State opera for leading roles, and played them from that time on. She became famous after her performance of various Strauss roles.

**Pianist Scheduled**  
Last number on the series course list will be John Kuyper. (See ARTISTS, Page 13)

### Finest Selections of—

- Fancy Boxed Stationery
- Fountain Pens
- Drawing Equipment
- Desk Blotter Pads \$1.00 and up

**GREGORY, MAYER and THOM**

231 SOUTH CAPITOL AVENUE, LANSING

SPARTANS MEET FOR  
CORES  
FOUNTAIN SERVICE  
SCHOOL SUPPLIES  
PRESCRIPTIONS  
TOILETRIES

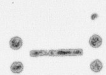
AT

**COLLEGE DRUG STORES**

WELCOME, CLASS OF '47

**Lansing Colorplate Company**

Manufacturers of Printing Plates



317 North Larch Street

Phone 2-7022

WELCOME FRESHMEN—

Leave your "Home in Wyoming" or the "Roaring Frontiers" to join "My Sister Eileen," "Yokel Boy," the "Ghost of Frankenstein" and "The Mad Martin-ales" on MSC campus. "The Fleet's In" on "Seven Days' Leave" for "One Thrilling Night" in a "Man's World." "Her Cardboard Lover" and "Mokev" are here to welcome you

We'll Be Looking for You  
The Week of September 20

**ORPHEUM THEATRE**

114 NORTH WASHINGTON

# SCHOOL CLOTHES

Keyed to the War Time Campus

We're hep to the apparel likes of the juke-box set and have made up their favorite styles for back-to-school wear. All are ruggedly aware of the demands that will be made on them by the playing . . . dancing . . . working crowd and fabrics have been chosen for wearing durability . . . as well as smart, good style. Every apparel buy has been made with the distinctive tailoring that will give good service and room enough for comfort.

**SUITS** FOR STUDENTS

\$18<sup>50</sup> — \$22<sup>50</sup>

Smart styles in swagger tweeds and worsted—just right for good looks and long wear.

Others \$24.50 to \$39.50

All Wool Sleeveless  
**SWEATERS** \$1<sup>98</sup>

Bright . . . good looking . . . in novelty weaves — plain shades and plaids.

Gabardine and  
Corduroy

**HATS** \$1<sup>29</sup>

ALL COLORS

Others at \$1.98

**SCHOOL SLACKS**

\$3<sup>98</sup>

Tweeds and plain colors—also pin stripes—all young styles.

Others \$4.95 to \$7.50

**SPORT COATS**

\$12<sup>85</sup>

All new styles and colors in all wools.



317 N. Washington Ave.

Music

Band,

Opene

Groups, Pa

College

Radio

Whether

as a place

of M

musical

number

best of

M

on the

general

capable

base and

of these

to have

point on

concent

in a

to the

organiza

tion. It

is a

to have

the

Men's

Group

I

Music

group

became

a

two

hourly

The

club

over

WKAR

and in

have

sing

year

are

and

four

year

last

year

and

more

will

be

the

group

pay

in

the

group

the

group

the

group

the

group

the

group

the

group

the

group

the

group

the

group

the

group

the

group



# Music Organizations Put Out Welcome Mat for Freshmen

## Band, Orchestra, Glee Club Opened to New Students

Groups Participate in College Concerts, Radio Programs

Whether a dute player or an aspiring musician, there is just a place for students in one of Michigan State's several musical organizations which number several hundred members.

Musical groups which anyone can join include men's glee club, women's glee club, a mixed chorus, mixed chorus, band and orchestra. Activities of these groups are centered in the Music building, one of the newest on campus, which has several practice rooms and a rehearsal auditorium.

Women's glee club in the past has been made up of 30 coeds who practice twice weekly. The group is made the size of the organization under the direction of William Sun who recently came to State from the University of Wisconsin. Dorothy Horn, Edgewood senior, is president of women's glee club for the coming year.

Members are chosen on the basis of their musical ability, voice quality and blending positions after tryouts the first week of September.

### Men's Group Functions

Men's glee club has not yet become a war casualty, and following last year's plan will hold two weekly rehearsals a week. The club sings regular programs over WKAR, college radio station, and in the spring men who have sung with the club for two years are awarded honor keys while four year men receive engraved leather-bound clocks.

Michigan State's 100 piece marching band is a thing of the past, but there is still a band, and many women have places in it. No longer a marching unit, the band nevertheless expects to have a group large enough to play in the stands at football games this fall.

There will be positions for new women in the band this year in addition to those already playing in it. Those who have

experience in high school bands are urged to try out.

### 40 in A Cappella Choir

Secular and sacred music is the forte of the a cappella choir, which numbers about 40 members. Under the leadership of William B. Kimmel, the black-robed group sings a series of radio broadcasts over WKAR each year.

Formerly the largest musical organization on the campus, the mixed chorus is likely not to function this year for the lack of male voices. However, interested men should make all attempts to try out for the chorus, which once numbered 200 persons.

If such a group is organized, it too will be under the direction of Kimmel, with practice one evening a week. Anyone with a love for singing or good music is eligible for chorus.

### Orchestra Gives Concert

The college symphony orchestra, numbering about 50 students presents some of the finest music of any campus organization. Under the direction of Prof. Alexander Schuster, the group gives a number of concerts at State each year.

Outside trips and out of town concerts put on by the various campus musical groups, will be out of the picture this year as a result of difficulties with traveling accommodations.

## Music Audition Plan Prepared for Freshmen

New students will have an opportunity to try out for all Michigan State music organizations during Freshman Week. Auditions will be held daily Monday through Friday in the music building.

Men's glee club auditions will be heard in room 203 from 1 to 3 p. m. A cappella choir auditions will also be heard in the same room during the same hours.

Women will have an opportunity to tryout for membership in women's glee club from 2 to 5 p. m. in room 107. Auditions into the marching band open to both men and women will be conducted in room 216 from 3 to 6 p. m.

Auditions for orchestra will be heard in room 202 from 1 to 3 p. m.

## ARTISTS

(Continued from Page 12)

patrick, pianist, who will appear May 2.

Kirkpatrick is an exponent of modern American composition, and since his first performance of Charles Ives' "Concord Sonata" in 1939, his recitals have aroused intense interest and discussion among critics and concert-goers.

Although best known for his performances of contemporary American music, he also has at his command a repertoire of classic and medieval music.

### Studied Abroad

Born in New York city in 1905, Kirkpatrick attended Lawrence

ville and Princeton university. He has studied piano in this country and in Europe under Philipp, Decreus and Louta Nounenberg.

Since his first public appearance in 1931, Kirkpatrick has given lecture-recitals on the history of music, taken part in the Yaddo and Princetown music festivals, given five Town Hall recitals, and for the past three seasons, under the auspices of the Arts program, has been visiting and performing at colleges.

An acknowledged authority in his field, Kirkpatrick is equipped to acquaint American college students with the current trend in American music.

## Season Tickets Available

Musical selections which have been included in the regular college lecture series for the coming year include the Cleveland Symphony orchestra, with Erich Leinsdorf conducting, the Charles L. Wagner production of "Faust," and the Ballet Theater.

Season tickets for the music series will be on sale after Oct. 1. All seats will be reserved by purchase of season tickets and no single admissions will be sold.

All music majors in the music department, Liberal Arts and graduate divisions will be given season tickets upon payment of tax only. All other students of the college may purchase tickets at regular prices.

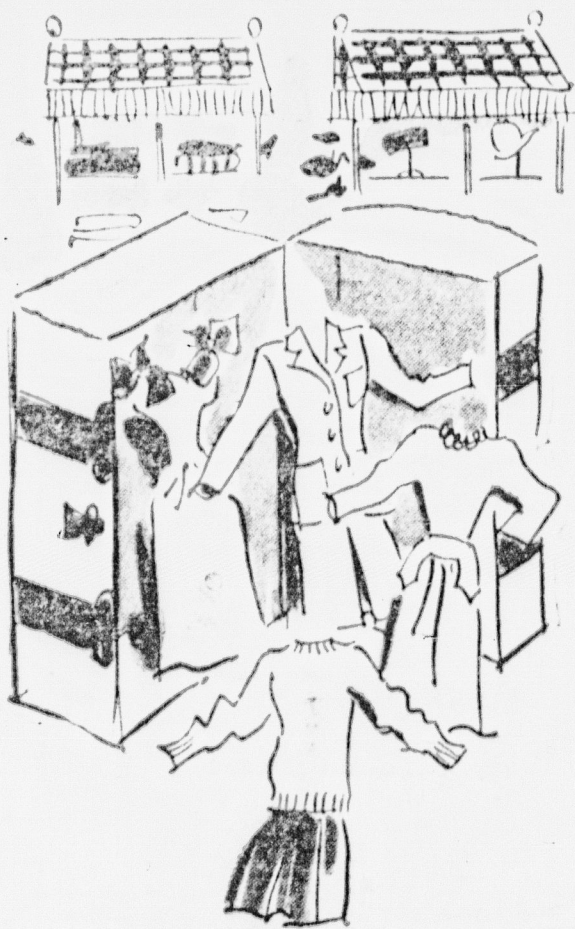


College Headquarters  
A Dream of a College Wardrobe

The MAURICE SHOP is ready with wonderful all-American Campus clothes you've been dreaming about. You'll want classics for classes... long or short sleeved tailored SHIRTS, bright hued SWEATERS, JACKETS and SKIRTS to mix or match. SUITS in sturdy tweeds, monotones or gabardines. You'll want velveteen, failles and crepes of the date DRESS variety and JUMPERS pretty enough for sorority teas. COATS are fashion news from fur-side-inside coats to masterfully tailored double breasted officers' coats, also the popular Chesterfield.

COME TO THE MAURICE SHOP AND SEE FOR YOURSELF! Don't forget our policy makes it easy for you to keep within your budget because our prices are always low.

Famous lines advertised in Harper's and Mademoiselle—  
Featured exclusively at Maurice's



DORSA DRESSES

KERRY-KRICKET SPORTSWEAR

BRYN MAWR BLOUSES

RAMBLER SWEATERS

GLENKIRK SWEATERS

DOUBLE ACTION BUTTON COATS

MARY MUFFET DRESSES

CARLYE DRESSES

KENWOOD COATS

VELVA GLAMOUR COATS

MISS SWANK PAJAMAS AND SLIPS

TAILOR BROOKE SUITS

STATE STUDENTS  
MAKE ONE OF THEIR  
FIRST STOPS AT —

CARR'S GRILL

You'll Like the  
Spartan Spirit — and  
the Good Food

GRAND RIVER AVE.

### WANTED

Two men to manage  
RAINBOW RECREATION  
Good opportunity for one  
who has children in the college  
Collegiate Atmosphere.



## Women Direct Special Class for Freshman Orientation

### Weekly Discussion Led by Upperclass Coeds

Michigan State college's only course given for credit and supervised by students is the women's freshman orientation program offered in connection with regular required physical education courses.

Supervised by the physical education department, informative class periods are offered once a week under the direction of coed leaders selected by AWS, women's governing body.

#### Regular Class Periods

This year, for the first time, the classes will be held at regular, scheduled periods. Section A will meet Tuesdays from 2 to 3 p. m. and Section B will meet on Saturday from 10 to 11 a. m.

The classes this year will be headed by Jane Cumming, Detroit junior. She will be assisted by Mary Remeking and Grace Allen, seniors from Detroit.

With the aim of assisting freshman women in adapting themselves to college life, orientation courses take the form of discussion groups headed by upperclass women and lectures given by faculty members and other speakers.

#### Interest Groups Formed

Between 15 and 20 women meet in special interest groups for an exchange of ideas, get ac-

quainted, sessions and question periods. Such topics as campus interest points, methods of parliamentary procedure, proper etiquette, demanded on various occasions, study habits, personality hints, clothing advice and others are included in these sessions.

Incoming women students are offered a choice of discussion groups from a wide range of interest. Matters of immediate campus organization and social life form the fall term program. Winter term meetings are devoted to a special health and hygiene series under the direction of the women's physical education department.

Winter term classes present outside speakers such as prominent Lansing physicians for talks on health and hygiene. Fall classes often feature talks by campus leaders and administrative heads of the college.

## WOMEN'S FASHION NOTES

(Continued from Page 10)

well as to the few formal dances that have escaped the war-time guillotine, will serve well its less important role this year.

As for a wrap, if the budget is limited, take it off the list and concentrate on a dress coat. However, Spartan women favor black velvet capes and coats trimmed in bunny fur. Floor length wool coats in gay colors are a growing favorite.

For the knockout punch in a college wardrobe, here are six good extras from Spartan coeds' unwritten code of campus

### Hats Rate Again

1. With formals going out with the tide, hats may gain more importance, with wispy ones adding the glamour touch on a dinner date. At any rate, at least one is needed for teas and church.

2. Spartans like snow white dickies, round or pointed, to give that added trimness to their skirt and sweater outfits. Initialed dickies or those piped in bright colors make for added originality.

3. Slacks are a must to protect from the icy winds that whip around the campus corners. But shop for a pair that are well-tailored in wool or gabardine and wear them with a jacket. However, slacks weren't made for some, be wise and save them for a roommate.

Always a cherished item with a State woman is her dress coat. If fur is on the list, make it serviceable by getting muskrat, mouton, racoon or any of the other not-too-expensive long wearing furs. However, fitted cloth coats are just as expensive as fur and just as popular among Spartan coeds. Black seems to take the lead in colors, but brown, blue, and various other colors are frequently seen.

4. Knee socks are absolutely taboo at teas. Leave them at home because both men and women howl them off campus.

5. Gloves come in three fashions: Warm mittens for winter classes, one glove for church dates, and bunny fur mittens for formals. A purse and gloves to match will make a smart ensemble for teas and church.

6. Jewelry is modish, especially junk jewelry variations. However, coin silver, rings, brooches, pins and earrings rate tops with Spartans. Pearls of course are an old standby. Silver or gold identification bracelets are all-time high with so many men in service. Simple earrings that can be worn to classes, and skirts and sweaters are a glowing whim of many Spartans.

**THE  
CAMPUS  
PRESS  
INC.**

**Printers**

Twenty-four Years Serving  
Michigan State Students

202 EVERGREEN AVENUE  
EAST LANSING

*Start your  
COLLEGE CAREER  
in the right fashion!*

But before you decide what fashion with make as your wardrobe, be sure to check with our board of fashion experts for their fashion knowledge. Come let them show you how you can do it at your college.

**FUR COATS — FUR TRIMMED COATS**

Season Skipper Sport Coats	\$10.00
Sporting Classic Sport Coats	\$25.00
Suits	\$22.00
Dresses	\$12.00
Dance Frocks	\$11.00
Wool Sweaters	\$ 3.00
Wool Skirts	\$ 4.00
Blouses	\$ 1.00
Dorm Robes	\$10.00
Scarves	\$ 2.00

**The Style Shop**  
116 W. Allegan St.



## Dramatics Play Important Role at MSC

'Claudia,' 'Letters to Lucerne,' 'Heart of a City' Listed as Student Term Productions for Coming Year; Studio Theater Offers Valuable Training

Dramatics at Michigan State range from the amateur to the near professional, and include everything from short one-act productions of Studio Theater to a long three-act presentation once each term during the year.

Plans for the coming year

are well under way and there will be no closing down of dramatic productions at State because of the war and shortages of men. Don Buell, director of term plays and instructor in speech and dramatics, believes in the old adage, "The show must go on," and it is

training spot for larger productions such as term plays, is Studio Theater. Under the direction of Mary Jeannette Martin and Elmer Chase, both graduate instructors in speech at the college, the Theater will continue its activities as usual this year.

### Many Roles For Women

More spots than ever are open to women to play roles in Studio Theater short plays. The group meets once every two weeks to work on its productions, many of which are taken out to various spots for entertainment.

Freshmen are urged to participate in this organization's activities if they aspire to play lead-

ing roles in major productions later on. Faculty members thus get the opportunity to become acquainted with the interested persons and learn their abilities, as well as to make suggestions for improvement while still in the beginning stage.

Major dramatic productions of the year include three term plays and a Farmer's Week play.

Work on term plays begins long before anyone suspects that plans are even made for having one. The three productions for the coming year have been picked and work will begin on the fall term choice as soon as school opens.

### 'Claudia' To Be Given

Rose Franken's comedy production "Claudia" has been chosen to start the year, and the play will be presented Thursday and Friday evenings, Nov. 19 and 20.

Casting will begin the first week of school and rehearsals shortly thereafter. Buell emphasizes that some persons should

discard the erroneous idea that casting is done before tryouts even take place.

Everyone has an equal chance in every play and if he fails to get a part the first time he is eligible to try again. Once a person tries out for a play a card is kept as a permanent record of his abilities and if he doesn't fit the picture in one play, he may be the answer to a prayer in the next.

### Freshman Women Ineligible

Freshmen women are seldom eligible for major productions, partly because of lack of proper training and partly because hours which they must keep do not coincide with rehearsal hours.

In a total cast of 27 actors used in last year's three major plays, only one person appeared twice in the course of the three. Under normal circumstances, the total cast for three plays would be well over that number as it was in the 1940-41 season, with a total of 54 performers, just twice the total for last year.

"Letters to Lucerne" has been named the winter term presentation. A war play by Fritz Potter and Allen Vincent, it concerns a number of young women attending a girls' school in Switzerland and the effect of the war on their lives.

The play has a strong women's cast and parts will be available for 17 women. There will also be strong character parts for men this year.

### Three Showings Listed

Winter and spring term plays will be given Thursday, Friday and Saturday evenings, for the benefit of the army men stationed on campus who cannot see them before Saturday.

"Letters to Lucerne" will be given March 2, 3, and 4.

The play for winter term is also a war production, which tells the story of a small London burlesque house, which in spite of the severe German blitz, never misses a performance. The play is "Heart of a City" by Lesley Storm.

The spring feature will be given during its usual time schedule week for three nights.

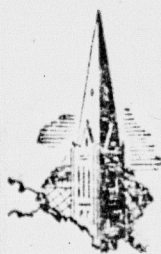
### Backstage Help Needed

All the work in putting on a play is not the rehearsals of the members. In the cast, however, Students help make the sets, produce costumes and scenery when necessary, act as prompters, make-up helpers, stage hands, curtain pullers and many other tasks behind the scenes.

NYA student help will be available this year to do such things and there will be a great need for students to accomplish these jobs.

C. H. Nickle has charge of set construction for the plays, and students work under him in the actual work of building a setting for the plays.

In addition to the work of production, (See DRAMATICS, Page 23)



## Church Directory

### COLLEGE LUTHERAN CHURCH

EAST LANSING, MICHIGAN

(Services in the State Theater Building)

Lutheran Student Club Sunday School and Bible  
7:00 P. M. at Union Study 10:00 A. M.

Worship Service 10:30 A. M.

Get Acquainted Meeting Thursday, Sept. 23, 8-9:15,  
Organization Room 1, Union

We Preach a Changeless Christ for a Changing World

WILLIAM YOUNG, N.A., B.D., Pastor

### Mifflin Church of the Nazarene

Mifflin at Prospect

REV. C. A. BRUCH, Rector

Worship Service  
11 a. m.

Sunday School  
10:30 a. m.

Young Peoples Meeting  
6:45 p. m.

Midweek Prayer and  
Praise, Wednesday  
7:30 p. m.

Take the College Bus to Francis Street,  
Two Blocks South on Prospect.

We Will Be Expecting You

### LUTHERAN STUDENTS

WELCOME TO

### CHRIST LUTHERAN CHURCH

(Missouri Synod)

122 So. Penna. Ave. near 1000 E. Michigan  
E. L. WOLFE, Synod's Student Pastor

MORNING WORSHIP 10:45

Communion on 4th Sunday

GAMMA DELTA — A Lutheran Fraternity for  
Synodical Conference Students meets at the Union  
on 2nd and 4th Sunday at 7 p. m.

### ST. THOMAS AQUINAS CATHOLIC CHURCH

405 Abbott Rd.

SUNDAY MASSES  
8, 10, 12 a. m.

WEEKDAY MASS  
7 a. m.

MIRACULOUS MEDAL  
DEVOTIONS

Monday, 7:30 p. m.

HOLY COMMUNION  
7, 7:30, 7:45, 8 a. m.

CONFESSIONS  
Saturday 4:30 p. m.  
7:30-9 p. m.

Before Sunday and Week-  
day Masses  
5:15 p. m. Daily

ROSARY NOVEN DAILY 5:15 p. m. Daily

NEWMAN CLUB 2:30 p. m. Sunday  
Religious, Social, Cultural

Rev. Jerome V. MacEachin, M.A., Pastor

Rev. Michael J. Micko, J.C.I., Assistant

Residence 601 Abbott Rd. Phone 8-3736

Four Can Ride for the Price of ONE  
Let US Meet YOU at the Station

PHONE 83561

24 Hour  
Service

35c

Anywhere in  
East Lansing

STATE CAB COMPANY

Office at Carr's Hi-Speed Service

210 West Grand River



# Campus Flash!

## The Worumbo Coat

A New and Wonderfully Warm  
CHESTERFIELD  
Exclusive at Jacobson's  
Coca and Navy at \$59.95



You Just Haven't Enough  
SWEATERS  
ALL WOOL KNUBBY-KNIT PULLOVERS  
And  
FINE KNIT CARDIGANS  
in every color  
\$3.95 — \$14.95



You'll simply live in this fly-front gabardine.  
Perfect for classroom or mid-week concert dates. In Red, Hunter's Green.  
\$14.95

**Jacobson's**  
"Across From the Union"



VOL. 33, 333

Span

Meeting

Put on  
Jenison  
coaches

Just inside  
MAN, Buck  
HOLSENGE  
Coach, Al

said OS  
by the  
collegiate

The main  
diagram  
TYNE, who

gasketball  
takes into  
does not

golf to  
Athlet  
YOUNG  
JOHN KOBS

diamond  
reached  
teams and

army team  
put round  
KAWA  
LINS are

results of  
competition  
taking. The  
collegiate  
representa

to be  
FRIMODIG  
the year  
schedule

REN BERT  
CHARLES SO  
KARL

LAUREN BR  
RICH all  
working

army men  
shape with  
court

CHARLES  
ning associ  
full of  
crash TAKE

MICRIAL  
HANS and  
physical

are looking  
one of the  
staff JOHN

for the  
to get on  
day

AWS  
Govern

Women  
State are  
Kemen. St

women at  
AWS and  
to create

At the  
each rep  
in AWS

representa  
AWS con  
presenta

which are  
role each  
also includ

from all  
This year's  
Pat. Stum

Working  
of it, is  
removed

each dorm  
campus rep  
Board dea

of AWS rule  
Limits Activ

Another  
Point. Limi

office or  
campus can  
number of

proportion  
and service  
The numbe

ed may not  
leadership  
and that re

ticipate in



## Spartan Campus League to Play Fall Football Games

### Meeting the MSC Coaches

Put on your walking shoes and let's take a prow through Jensen fieldhouse and gymnasium for a look at the coaches.

Just inside the door are Football Maestro CHAS. BACHMAN, Backfield Coach JOE HOLSENGER, and Line Coach AL KAWAL. Their sad expressions are caused by the canceling of their intercollegiate schedule.

The man with the charts and diagrams is BEN VAN ALS-INE, whose set shot system of basketball is widely known. He takes time off in the spring to develop a consistently powerful golf team.

Athletic Director RALPH H. YOUNG is in conference with JOHN KOB, director of State's summer games. Kob formerly coached the freshman football team and now in line for an army team to coach for the campus league.

KAWAL and FENDLEY COLLINS are talking over the possibility of some intercollegiate competition in wrestling and boxing. The old days of intercollegiate wrestling champion ship seem to be out for the duration.

Football Director LYMAN FRIMODIG has his hands full in coaching out intramural football. Helping him is WARREN BIRT, his office assistant.

Charles Schmitter, fencing coach, KARL SCHLADEMAN, LAUREN BROWN, FRANK DITTRICH, all track coaches, will be working hard this year keeping army men and civilian men in shape with the outdoor obstacle course.

It is easy enough to find CHARLES McCAFFRE, swimming coach, teaching a pool full of army men the basic drill. JAKE DAHLGREN, K. J. McRISTAL, "BRIK" BURBANS, and JAKE DAUBERT, physical education instructors, are looking over class lists. And one of the new additions to the staff JOHN SCHLEUTER, is off to be in service camp to join what is left of the old varsity club staff.

### AWS Comprises Women's Governing Body at State

Women's activities at Michigan State are governed by Associated Women Students council. All women students are members of AWS and under the rules of its constitution.

At the beginning of the term each new student will be given an AWS handbook which will explain the code of women students and list all the rules and regulations of AWS.

#### Representative Body

AWS council is made up of representatives from each class who are elected by popular vote each spring. The council also includes ex-officio members from all women's organizations. The year's president of AWS is Pat Spence, Chicago, Ill. senior.

#### Limits Activities

Another branch of AWS is Point Limitation board. Each office or activity for women on campus carries with it a certain number of points worked out in proportion to the amount of time and service in the activity.

The number of points any co-ed may hold is limited so that leadership may be spread out and that more students can participate in activities. Point lim-



CHARLES BACHMAN  
... football coach ...

### Experience In Radio Made Available By Workshop Group

Actual opportunity for work in radio production is offered to Michigan State students under the Radio Workshop group directed by Joe Callaway, director of radio education.

The student organization presents a half hour dramatic broadcast over station WEAR every Thursday at 4:30 p. m.

Radio Workshop offers an opportunity for both directing and acting and this year will also give experience in writing and adapting radio scripts.

Freshmen who are interested will be given an opportunity to try out for work early in the fall term with a five minute audition, stressing characterization and interpretation.

Real leader of Michigan State women is Dean Elisabeth Conrad, who offers guidance to all coeds.

Real leader of Michigan State women is Dean Elisabeth Conrad, who offers guidance to all coeds.

Real leader of Michigan State women is Dean Elisabeth Conrad, who offers guidance to all coeds.

Real leader of Michigan State women is Dean Elisabeth Conrad, who offers guidance to all coeds.

Real leader of Michigan State women is Dean Elisabeth Conrad, who offers guidance to all coeds.

Real leader of Michigan State women is Dean Elisabeth Conrad, who offers guidance to all coeds.

Real leader of Michigan State women is Dean Elisabeth Conrad, who offers guidance to all coeds.

Real leader of Michigan State women is Dean Elisabeth Conrad, who offers guidance to all coeds.

Real leader of Michigan State women is Dean Elisabeth Conrad, who offers guidance to all coeds.

Real leader of Michigan State women is Dean Elisabeth Conrad, who offers guidance to all coeds.

Real leader of Michigan State women is Dean Elisabeth Conrad, who offers guidance to all coeds.

### Council Heads MSC Student Government

Organization Contains Elected, Ex-officio Representatives

A provisional council to carry out war and student activities for the duration is the purpose of the newly re-organized student council at Michigan State college.

Reduction of the size with a view toward increasing efficiency and competence of the student governing organization was carried out last spring under the group's first woman president, Peg Burdette.

#### Hueschen is President

Newly elected Pres. Gordon Hueschen, Pigeon, Mich., is carrying out the plans set up by the body at its last meeting of spring term.

Formerly, candidates campaigned for election to Student Council. Under the new system, any one is eligible to submit a petition for election, but the actual choosing of members is done by a vote of the present student council members, and newly accepted members at the time of the election.

#### Has Ex-officio Members

Ex-officio members now include representatives of AWS, Pan-Hellenic council, CIO, State News, Union board, each woman's dormitory and cooperative house, Interfraternity council and interfraternity council.

The representatives may be either the president of the organization or an elected representative to be selected by the organization itself.

#### Faculty Advisers

Faculty advisers for the group include Pres. John A. Hannah, Dean of Men Fred T. Mitchell, Dean of Women Elisabeth Conrad, Social Chairman Tom King, Prof. J. T. Caswell, and a member from the military department to be selected when the need arises.

Council projects for the ensuing year promise a new form of government for the campus, with the council backing every worthy cause as far as possible.

### Intercollegiate Competition Suspended For Duration

President Hannah Cancels Gridiron Schedule In Favor of Civilian, AST, and Aircrew Series; Double Headers Fill Season Calendar

Despite Pres. John A. Hannah's order suspending all inter-collegiate athletics for the duration, football will not be lacking at State this fall, according to Athletic Director Ralph H. Young. To replace the eight games formerly



RALPH YOUNG  
... athletic director ...

### State Will Offer Courses to Fill War Time Needs

All six of State's academic divisions are offering special courses to fulfill wartime needs this fall. The courses cover almost everything from dairy herd testing to Arabic and are to be offered to all students.

The college as a whole is remaining open all year to aid the education and training of soldiers and civilians whose services are needed.

War-useful courses offered by the division of Liberal Arts include economics of war, contemporary history, psychology of war and elementary and advanced navigation.

In the foreign language field Russian, Arabic, and Portuguese languages are being taught.

The division of Engineering has been offering a series of short intensive night courses for

(See COURSES, Page 23)

scheduled with colleges and service teams, a campus league is being organized by the athletic department.

Teams of this campus league will play double header football games every Saturday afternoon starting Sept. 25, Young stated.

#### War Causes Elimination

Fifty-seven consecutive years of football were terminated by President Hannah's order which came out August 11. In his announcement he stated that, with almost all of the able bodied men of the college in the armed forces, it seems unfair to possible participants to expect them to compete with older and more competent men.

"Such competition would not be advantageous to the physical well being of the men involved and would not be helpful to their morale or the morale of the student body as a whole," he added.

#### Sports Proceed After War

President Hannah further said that after the war Michigan State would proceed with a full program of intercollegiate sports or would begin them again before, if at any time the war department determines that such activities would not interfere with the college war training program.

The campus league consists of teams made up of army students on campus in the Army Specialized Training program, junior ROTC students awaiting call to OCS, civilian students, and the air force enlisted personnel permanently stationed here.

#### AST Has Three Teams

The AST has three teams. One composed of Veterinary students, one made up of the men living on the campus, and one of the men living off campus.

Since the air force does not sanction football for its college training detachments, the air force team will consist only of the enlisted personnel. However, the aircrew men may participate in any other sport except boxing, wrestling and lacrosse, so competition will be even more keen than it is in football, Young explained.

#### Each Team Gets Coach

One of the varsity coaches will be assigned to each team, as well as a field to practice on and uniforms of different colors. These teams will practice from 5 to 6 p. m. each day, and in this way will all be starting under the same conditions, Young declared.

### NYA to Be Replaced by Part Time Work in College Offices

Until further arrangements are made, part time jobs in town and in college departments will be handled through the former NYA director's office, Glen O. Stewart, director of alumni relations, announced.

Any students who can see in advance that they will need work are asked by Stewart to write him, addressing mail to Union building, Michigan State college.

College authorities prefer that freshmen do not work during the fall term. They are encouraged to establish their scholastic standing first, Stewart said.

### Campus Beauty Brought About by Planning

The beauty of Michigan State's campus is the result of a long time program of retention and maintenance of natural beauty under the supervision of MSC officials.

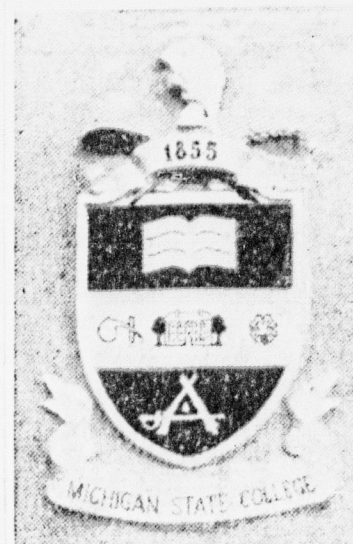
Although the original purchase of 676 acres in 1856 was finely wooded it took working students and faculty many years to eliminate the beauty mars of scrubby timber and poor shrub plants.

#### Planted Fir Trees

Employment of Adam Oliver, landscape gardener from Kalamazoo, to lay out the college park and locate paths and drives, started the first landscape planning in 1862.

While Oliver was planting Norway pines and evergreens, many of which are standing today Dr. H. M. Thurber, second professor of horticulture, was planting such exotic trees as Ginkgo, Siberian pea, Kentucky coffee, and Japanese quince.

Tree planting continued under the supervision of Dr. W. J. Beal who in the spring of 1896 planted the first rows of white pine



MSC COAT OF ARMS



# 'Big Sisters' Guide Freshmen Women Through First Year

## Orientation Activities Acquaint New Students with College Way of Life

Women's guidance activities at Michigan State are centered in the women's counselor system, traditionally known as the Big Sister program.

About 50 upperclass women will try to help freshman women become acquainted with Michigan State college under this plan. "Already many women have volunteered to serve as social and personal counselors to incoming women students, and more will be selected when school opens."

### Carry on Correspondence

Counselors correspond with their "little sisters" during the summer and are on hand to help them during their first year. In order to establish closer contact between new students and upperclass women, Big Sisters are being assigned by residences.

Activities will get under way during Freshman week with get-acquainted programs planned for dormitory, co-op, off-campus and town women.

Monday night of Freshman week, the upperclass coeds in women's residences will entertain the new coeds at "spreads" which will serve to introduce the new women to their neighbors.

### House Meetings Planned

The following evening all women will gather in their respective residences for house meetings at which dormitory rules and such information as location of post office, cleaning establishments, and book stores will be explained.

The annual dean of women's reception for new students will be held Wednesday from 8 to 9:15 p. m. in Williams hall, high-

William: Barbara Quayle and Atkinson; Dorothy Jean Sander, East Mayo; Carolyn Kahnbach, and Virginia Connie Helmer, North Camp-

bell, Doris Protheroe, and Gould, South Campbell; Briggsden, and Lois Robin-



RAE ANNETTE LOEFFLER  
PAT FISHER

lighting the program of orientation for women.

The Big Sister council is made up of representatives from each housing group. Included in this group are cooperative representatives, Margaret Levill, Betty Pink, and Jean Zook, Town Girls; Jean Schmeichel, Lois Panzer, and Shirley Mae Pope.

Off campus, Patty Foran, Marge Johnson, and Alice Schuster, North Williams; Pat Eastley, and Dee Dearing, South

Welcome Students from

# THE CHIKEE SHOP

OPEN 21 HOURS A DAY

Our Specialty—Fine Chicken and Special Dinners.  
Come in and "Try Our Chikee Deluxe."

PHONE 4-2115

1311 EAST MICHIGAN, LANSING

# The For Every MSC Student

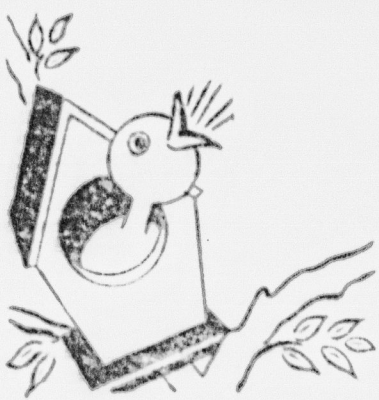
# SPARTAN

- Candid Shots of Campus Life
- Roaring Stories
- Cartoons
- Jokes and Humor Too!

GET YOUR YEAR'S SUBSCRIPTION—  
TUESDAY, SEPT. 21  
AT CAMPUS STANDS—\$1.25

Free Mailing to Service Men Within  
Continental U. S.

## Give Your Worry-Bird A Vacation



Don't  
Fret  
trying to  
close  
your  
trunk!

Stationery—

Cosmetics—

Jewelry—

Hosiery—

## CAMPUS 5 & 10



## Spartan Magazine to Mirror MSC Humor for 1943-44

J. K. Barnes to Head Publication Next Year

In the Union annex office the student editors of the Spartan, Michigan State's monthly humor magazine, are busy working on their first issue of the new school year. Designed to mirror the humorous side of MSC life, the magazine will go on sale in the October issue with the beginning of fall term, it was announced recently.

### Staff Features Cartoons

The magazine's first issue, published seven years ago, the 1936-37 issue, featured stories, poems, pictures, and cartoons.

The magazine is published by the Michigan State University Student Body. The position of editor is elected for the year. The magazine is published by the Michigan State University Student Body.

### Editorial Opportunities

Students interested in writing and business staff positions are invited to apply for the magazine. According to the magazine, the staff is open to all students.

Students may apply for staff positions in writing, advertising, circulation, and business. The magazine is published by the Michigan State University Student Body.

### Photo Department

The magazine's photo department is also open to students. The magazine is published by the Michigan State University Student Body.

The magazine will go on sale in the October issue with the beginning of fall term, it was announced recently.



JEAN BARNES  
business manager

Seven years ago, the magazine was published by the Michigan State University Student Body. The magazine is published by the Michigan State University Student Body.

The magazine will go on sale in the October issue with the beginning of fall term, it was announced recently.

## BWOC

(Continued from Page 11)  
with Betty Simpson, president of the Union board, and Vera Gardner, a letter-brained chairman of C.D.C. Coordinating Defense Council, from the parody of BWOC.

Up in the dean's office, athletic and attractive Ed Stone, president of A.W.S. Associated Women students, and Dora Johnson, president of P.W.S. Professional Women students, are planning to coordinate all the activities of the women's organization.

The women of the Union board, Marge Lehto, president of M.S.U. Michigan State University, and Marge Lehto, president of M.S.U. Michigan State University, are planning to coordinate all the activities of the women's organization.

If everybody cares enough, and everybody shares enough, everybody will have enough.

Students Will Find Supplies for

ENGINEERING  
PHYSIOLOGY  
ZOOLOGY  
BOTANY

THE *ink Pot*  
STUDENTS  
SUPPLIES  
East Lansing, Mich.

## AT PENNEY'S

J. C. PENNEY CO., INC.

As Seen in  
Woman's Home Companion



WELCOME—

FRESHMEN

We're here to keep you healthy with

Scientifically Processed

DAIRY PRODUCTS

MILK — CHEESE

BUTTER — ICE CREAM

DELIVERED TO YOUR DOOR

EVERY OTHER DAY

MSC Dairy Products

W. B. GLINES

(Distributor)

Call 8-1511 - Ext. 559 for Deliveries

Imagine, in Times Like These, Finding

100% PURE WOOL TAILORED SKIRTS

Only at Penney's, these nationally-advertised wool skirts—the most astounding values you've seen in a long time!

Wool crepe, soft, but firm, in smart, sharp pleats. An array of lovely colors, pastel and dark.

Plenty of skirts to start with... but we can't guarantee quantities, so

Other Skirts in plains or plaids, 2.95—5.90

at  
**3.98**

And You'll Need Plenty of

Classic TAILORED BLOUSES!

Just made to go with the skirts, these trim, excellently tailored models. In a wide variety of lovely colors, and white, of course.

**1.98**

Complete the Costume with One of These

MAN-TAILORED JACKETS

The same soft pure wool crepe as the skirts, in trim-fitting, shoulder-hugging smartness! Matching or contrasting colors, so you can "mix your own!"

**6.90**

"In the Heart of Downtown Lansing"

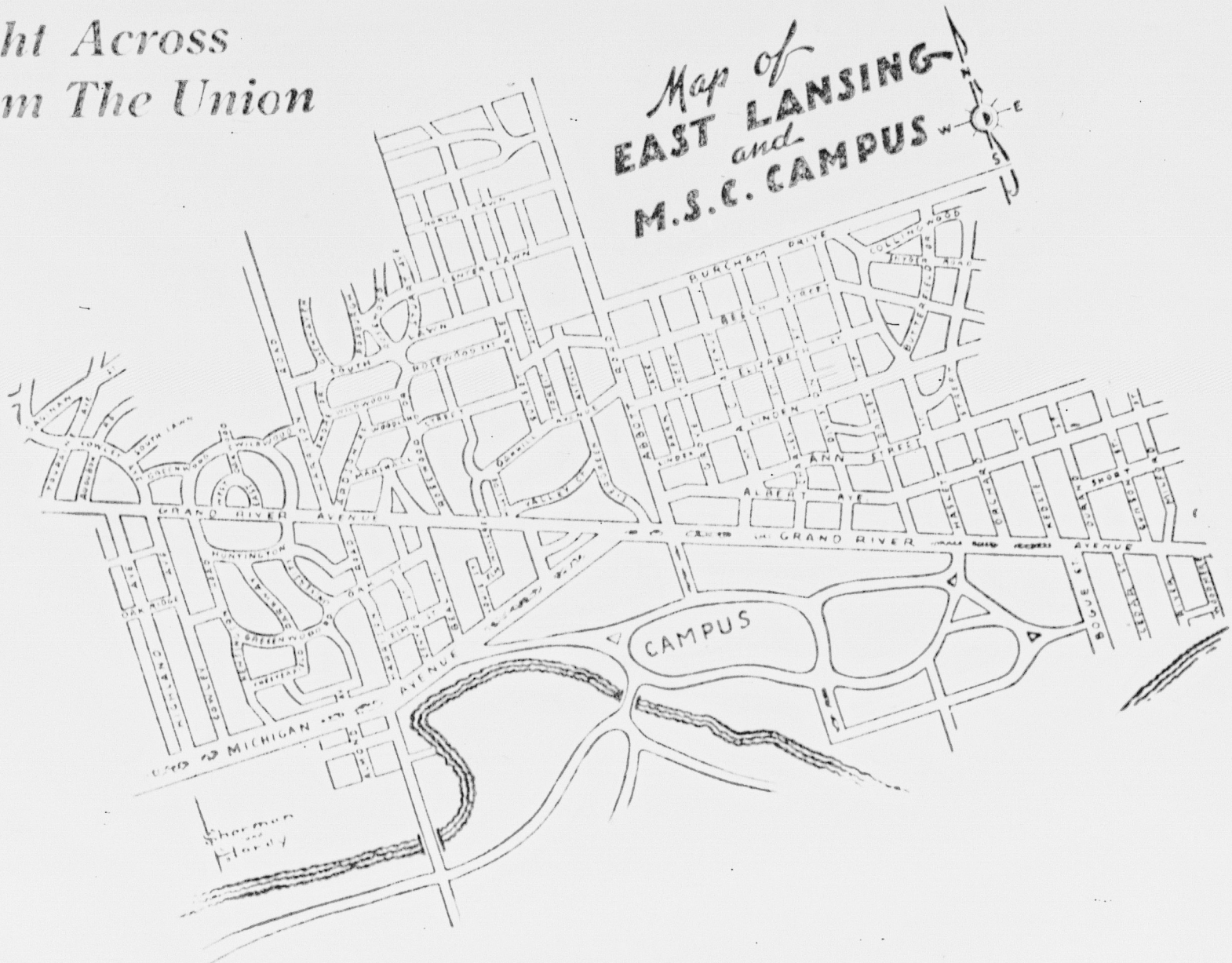
Michigan at Washington



# *You Can't Lose Your Way in* **EAST LANSING**

**Nor Can You Miss The Campus Book Store**

*Right Across  
From The Union*




---

**Complete Stock of New and Used Books**

---

# **CAMPUS BOOK STORE**



# MEN'S FASHION NOTES

## Balanced Wardrobe Should Be Male Goal

Fresh Men's Problem is Matching Items to Blend Into An Ensemble of Clothing to Wear for Any Occasion

By Jerry Kenney

In the remaining weeks before fall term 98 per cent of the prospective freshmen will be giving more thought to the problem of their clothes than to college algebra or English 102.

### Balanced Wardrobe Gets Bid

For the college freshman, leaving home for the first time means the biggest event in his life since the first pair of long pants. All purchases are made on a blank budget, the most important item being not buying individual shirts, but a balanced wardrobe.

The shortages of clothing, fabrics, and colors will mean that even more than usual care will have to be employed in selecting clothes. Most fabrics obtainable today are not all virgin wool. The cotton or rayon added to wool while not greatly affecting the appearance do reduce the amount of wear and tear that they will stand up under.

There is always the temptation on a clothes buying spree to get the thing which catches the eye, and then find out in a week or so that it won't blend in with your wardrobe.

### Dash Sport Coat Out

The dash sport jacket can have its place in a wardrobe. But if it doesn't fit with what you have, it's better off. Money is much better spent for a good sport coat or a good supply of shirts, ties, and accessories.

Each college town has its own style eccentricities, and what is correct at Michigan State might not fit in at an eastern or southern school. For this reason it's always a good idea to wait until looking at the Lansing and East Lansing shops before completing your wardrobe.

Current style trends come first to college stores, and often college wear starts the trend.

### Woolen Fabrics Popular

Woolen fabrics, gabardines, and coverts are the most popular materials, while corduroy is popular for the so-called "Stetson wagon" style. These sport coats have the quality to stand up to any type of sport or dress.

Not the least important item of clothing is shoes, and here the old rule of quality above quantity is essential to a well dressed person. It is enforced by rationing. One pair of broken plain heel shoes is a requirement for ROTC. These should be as plain as possible and for male some they'll take the better.

A good sport of raincoat is needed for the long treks from class to class on rainy days. Light weight jackets find plenty of use also.

### Laundry Becomes Problem

Laundry, which is easily forgotten in the college town, is that laundry service is now more of a problem away from home. Its absence is a problem for socks, shirts, and handkerchiefs. Laundry is enough to hold out in case the laundry in the post office is a little slower than you would like.

Transparent plastic conform to the trend toward ruggedness. Socks may range in color from dark to screaming except for a couple of brown pairs for military and three or four of a more subtle tone for dress wear. It is not 100 per cent important that you follow the fashion trends, but nothing can take the place of a press in your pants and a shine on your shoes.

## Fraternities Set Tentative Plans For Early Rushing Activities

Fraternities at Michigan State will become almost a reality through the announcement to the armed forces. Fraternities expect to begin rushing activities, although Interfraternity Council is not attempting to do so to any great extent. The Interfraternity Council is interested in rushing activities for freshmen. Only three of Michigan State fraternities are active. They are Sigma Chi, Phi Delta Theta, and Theta Chi. It is expected, however, that other fraternities will begin rushing this fall since the return of former ROTC students will add to membership.

Further details on Interfraternity Council will be announced later when the program for fall gets under way.

National fraternities which were active at Michigan State before the war included Alpha Chi Sigma, Alpha Gamma Rho, Alpha Tau Omega, Delta Chi, Delta Sigma Phi, Farm House, Kappa Sigma, Lambda Chi Alpha, Phi Delta Theta, Phi Kappa Tau, Pi Kappa Phi, Psi Upsilon, Sigma Alpha Epsilon, Sigma Chi, Sigma Nu and Theta Chi. The one local Alpha Epsilon Pi.

## Freshmen Will See High School Principals at Fall Conference

Each year during the middle part of fall term, Michigan State college officials sponsor a student-principal conference for the benefit of freshman class members and to enable the principal to get a better idea of what colleges expect.

Due to the war and transportation shortages, plans for this year's conference are only tentative.

Designed to aid new students in orientating themselves to college life and problems, the conference runs through a half day.

Principals of all Michigan high schools are assigned rooms in college buildings and their former students meet them individually for private conferences.

Although the aim of the project is to allow freshmen to express their opinions freely regarding college courses and difficulties, the conference is also valuable to the college since records are kept which reveal shortcomings in the function of the college.

## College Social Activities Under Direction of Activities Board

Social activities at Michigan State are centered in one coordinating unit, the all college activities board. It has as its object planning entertainment for both soldiers and civilians.

The Board, which is headed by Doris Johnson is the clearing house for all student problems for entertainment. It plans dances, social hours, mixers and other parties for student social life. All open parties must go through the board.

Organized by CDC, Student Council and PanHellenic Council, the board has representatives from all campus groups and organizations as well as representatives from the AST and air crew units.

Advisors for the group include Prof. Tom King, Lt. F. N. Miller of the aircrew unit, and Lt. Robert Smeltzer, representing AST.

## Welcome Freshmen —

See Us for

- GREETING CARDS
- STATIONERY
- PENS AND PENCILS
- CERTIFIED PHOTO FINISHING

OPPOSITE UNION

**LINN**

CAMERA SHOP



for your  
dancing pleasure

**CORAL GABLES**

Open Every Friday, Saturday and Sunday Nights and Sunday Afternoon.

Presenting "THE FINEST" in  
FLOOR SHOWS AND ORCHESTRAS

MSC's Most Popular Nite Club Will  
Be Looking for You Freshman Week

You can catch a Bus for Coral Gables  
in front of the Union

Located 1/2 Mile East of E. Lansing on U.S.-16

### FRESHMAN COEDS—

Make FREEMAN'S your Beauty Center during your college career.



- PERMANENTS
- FINGER WAVING
- MANICURES
- FACIALS

**FREEMAN'S BEAUTY SALON**

Where Quality of Work and Service Blend to Give You Perfect Service

211 M. A. C. Avenue — Phone 8-3539



## Welcome to Freshmen

The Freshman week committee is very happy to extend a most cordial welcome to all new students.

A great deal of planning is done to make your entrance into Michigan State college as easy as possible. The period known as Orientation week is set aside to acquaint you with the college and its policies. During this week you will meet your adviser, make out your study program and complete your registration details. A certain amount of social activity is mixed in with the business of academic orientation and registration.

We hope and believe that you will enjoy your entrance into Michigan State college. It is a great institution with as fine a student body as there is anywhere in the United States. Very soon you will discover its friendly spirit and later you will help to maintain and carry on the long established tradition.



S. E. CROWL  
multiple director

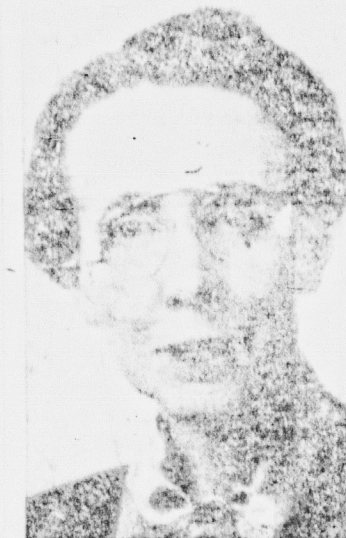
## Administrators



EARL McDONNELL  
college secretary



FRED E. MITCHELL  
dean of men



ELISABETH CONRAD  
dean of women

## 64 Freshmen Will Attend College on Alumni Scholarships This Fall

Sixty-four members of the class of 1947 will attend school this year on alumni scholarships. Half of the number will represent each of the state's 32 senatorial districts, while other 32 are selected from the state at large.

Equivalent to the \$120 fee for the regular school year, the scholarships are awarded to outstanding high school students for high scholastic rating plus extracurricular activities.

Although such awards are given only for the freshman year, they may be renewed at the end

of each year on attainment of sufficiently high college average.

Administration of scholarships is in the hands of Glen O. Stewart, director of alumni relations and work.

Students receiving scholarships are required to meet with L. C. Plant, one of the committee on scholarship, and with Stewart from Friday night, September 11, through Sunday, September 13, in the Union, Stewart room.

## Taxes Pay Bulk of College Cost, But Student Fees Help

Out of every dollar spent for education at Michigan State college, students contribute only 12½ cents.

The remainder of the costs of college instruction comes from federal and state tax money.

In proof, statistics show that about \$4,000,000 is spent each year for the education of Michigan State college students, while these same students pay into the college little more than \$500,000 in college fees.

### Rest Comes from Taxes

The balance of the necessary money is supplied by state and federal governments, in a ratio of three and one-half to one.

Freshmen pay a matriculation fee of 10 full term and men who are required to take military service will pay an additional \$3.00 a matriculation deposit. If the amount is refunded into the deposit, it is refunded. Several new dollars can be added to the bill of students signing up for laboratory courses which require bookkeeping deposits.

### Refunds Are Made

Each year Michigan State college all freshmen will learn at a camp sum of \$40 per term, while out-of-state students are assessed an additional \$20 per term.

Should a student have to withdraw from college after paying his fees, he is entitled to refund as follows: In case of voluntary withdrawal in the first 20 days

of the term, all fees except the \$3 matriculation fee, after that time and prior to the end of the first six weeks, one-half of the college fees. No refund is made after the first six weeks of the term.

## DRAMATICS

(Continued from Page 15)

during three major dramatic plays a year. Each hopes to plan a series of campus entertainments for the seniors and some novel information programs for freshmen during the term.

### Campus Talent Used

Campus talent is the only source of entertainment which has been used for such affairs in the past and with good results. It is to go on, he hopes to have many more programs prepared.

Last year's fall term play was presented at Fort Custer during the winter and all three plays this year are wanted for special entertainment features at the camp. Back hopes to be able to take the costs to Custer each term after these campus performances and plans are being made to do so.

## Learn Shorthand and Typing

The most valuable skill any College Man or Woman can acquire. Short intensive courses.

Evening School  
opens  
September 20  
Monday and Thursday  
7:00 to 9:00

Day School  
opens  
September 20  
5 Days a Week  
8:30 a. m. to 4:30 p. m.



76th

Year

## LANSING BUSINESS UNIVERSITY

Ionian Street at Capitol Avenue  
Phone 2-9813



## PEGGY'S

Beauty Shop

ready to serve

State Coeds

Make your

Beauty Headquarters

at

## PEGGY'S BEAUTY SHOP

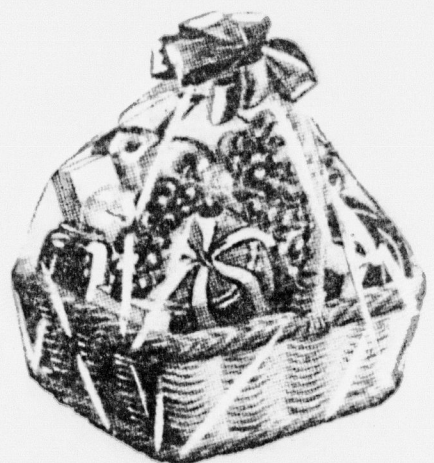
222 ABBOTT ROAD

PHONE 8-2817

## Greetings — New Spartans

From Smitty, Class of '16

We are proud to announce our new expansion. The same superior service, variety and low prices making this expansion possible will continue.



## SMITTY'S FRUIT STORE

311 East Grand River

Phone 8-1714

"Always a Good Show — Often a Great One"



THEATRE

EAST LANSING

When you are in need of relaxation—Your friendly State theatre is just the place to patronize. The latest in cinema entertainment, presented in beautiful surroundings. Follow the crowd to the State Theatre.

BUY BONDS and  
STAMPS at Our  
Box Office—

Back the Attack!



# Michigan State Students Go All Out For Victory

## CDC Outlines Big Program To Include All Spartans

When the bombing of Pearl Harbor on Dec. 7, 1941, shocked the United States to the realities of war, the nation changed its slogan from "National Defense" to "V for Victory," even the most studious Spartans became war minded and clamored for campus action. Student council and members of the faculty put their heads together and came up with a plan.

The student Defense Council, a program for Michigan Spartans that functioned as the commander of the state's defense effort, made a state-wide survey.

**Future Promising**

The survey was kept up all last year and this year promises that the CDC's defense setup will be one of the most efficient college systems in the nation.

The CDC also went a revision of its plan, now known as the "Michigan State Victory Program," which will include all defense activities available.

**Offers War Classes**

The plan of the defense program as outlined by the CDC for next year will be a continuation of the past and varied defense courses for all students and including a large percentage of the college population, the Michigan State Victory program offers war leadership possibilities and a fine education to incoming freshmen.

It also offers opportunities in the field of civilian service, courses in first aid, air raid warning and auxiliary police training, and more training are given. In the training program are classes in map-making, spotting, construction, drawing, languages, map-making and photography.

**Includes Nutrition Course**

Students are given a history, nutrition and other activities. The CDC undertakes are many, among them, victory, coke, and other things, campus-wide and on.

The CDC also sponsors tag days for the sale of war bonds and stamps and contests between different campus groups are conducted for the highest sale.

**Sponsors March Gras**

The CDC is sponsoring projects in the preparation of the annual March Gras. The March Gras is a big dance and celebration which is going to war.

A defense king and queen are chosen to preside. It is uncertain as yet whether such a

dance will be possible this year, but plans will probably be made for such an event early in the fall.

### SWAVes Help B & G

Under the CDC, as a branch of it, are the war planning board and SWAVE units. The war planning board is an executive council of civilian defense, and the SWAVes are women students who voluntarily work at campus jobs.

Included in the CDC plans are entertainment for soldiers. Each month the CDC, with Prof. Don Buell of the speech department as director, takes a show of campus talent to Fort Custer for performances at the Service club and Red Cross center.

### Presents Variety Show

These campus variety shows are also used for entertainment of men in uniform on campus. They may later on also be used for entertainment in Lansing war plants.

This year's council is headed by Vera Gardner, senior from Abion. The council is made up of representatives from women's dorms, sorority houses, off-campus houses, media housing groups and representatives from all campus organizations.

Advisers for CDC include Prof. Tom King, Dean Elisabeth Conrad and Dean F. T. Mitchell.

Freshmen are encouraged to participate and there is no better opportunity for new students to become acquainted at State and start an active career here than to enroll in some branch of the campus defense activity, according to Miss Gardner.

### Board Disciplines Women

Disciplinary board for Spartan women is judiciary board, which operates under the supervision of AWS. All petitions for excuse of late minutes, late permission and special hours are dealt with by the board.

The board is composed of representatives from the cooperative houses, the president of each dormitory and chairman of the off-campus board.

Don't be a tradition breaker—no smoking on campus.

## COURSES

(Continued from Page 17)

men in war industries and these courses are offered to both army and civilian students.

Veterinary science schedules are accelerated at the request of the government. Vet. students may enlist as reserves in the army and receive physical pay and transportation.

Meteorology, photography, radio, geography and chemistry and physics are all offered as aid to the war effort by the Applied Science division. The physical education conditioning programs also come under this division.

Home Economics division has been aiding the war effort by providing refresher courses and demonstrations for and home-wives in war food and clothing problems.

In a course designed to help the farm labor shortage the Ag. division has offered courses to give women training in farm skills.

## Yank Made Available For Aircrew, AST, Civilian Students

Yank, well known army newspaper, written, reported and edited entirely by enlisted men, is now available to both civilians and soldiers in East Lansing. The paper is on sale at the Smoke Shop.

Circulated in the United States and usually sold only in army post exchanges, Yank has many well known authors and journalists on its staff and has complete army coverage.

While it is written with soldier's points of view, it is highly entertaining and often enlightening reading for civilians.

## Spartan Women Aid War Effort by Keeping College Grounds Trim

One CDC project that has gained considerable recognition as a service unit is the SWAVE program for Spartan women.

Organized spring term it had as its object the maintenance of the appearance of the campus.

Headed by Barbara Peag, Detroit house, the SWAVes work on Buildings and Grounds department. They volunteer their services to do such work as cutting grass, sweeping sidewalks and streets, raking leaves.

### SWAVes Clean Offices

They also work inside cleaning classrooms and offices and filing papers and bulletins and other such tasks.

The project was originally or-

ganized to aid in the manpower shortage in the Buildings and Grounds department and it has been met with enthusiasm by State women as well as the B and G department.

### Open to Freshmen

In commenting on the work, women say that it provides exercise besides giving an opportunity to be of service to the college.

The activity will be open to all women who are interested and an opportunity will be given to sign up for work during regular registration.

Invest in Victory—Buy War Bonds and Stamps

## Learn to Dance

**FRESHMEN:** The better dancer you are the more fun you'll have at the college dances. Come in and we'll show you all the latest steps.

**CLASSES IN FOX TROT, WALTZ, RHUMBA, CONGA, TANGO.**

Separate Classes for Beginners — Special Students

## Virgiline Simmons School of Dancing

1128 East Michigan—On College Bus Line  
Phone 2-0271

## For Your Eating Pleasure

As Ever THE NEW HUT Is at Your Service



Stamps will buy his socks and helmet  
Bonds will buy his gun.

Save—so Uncle Sam can spend.  
Until the war is won.

## Buy War Bonds AND Stamps

## The New Hut Steak House

312 E. Michigan — Lansing  
Hours 12 a. m. - 9 p. m. Closed All Day Monday

For the Special Someone  
in Your Life  
Have Your Portrait Taken



## Donnell Studio

East Lansing Phone 8-3043  
318 Marshall Street



# To the Class of '47 —

HURD'S cordially invite you, as we have the past 26 Freshmen Classes of State, to come in and browse around our campus shop. We do not ask that you buy anything, in other words we want to make your acquaintance, and will be more than satisfied to have done just that.

From a wide and up-to-date selection of nationally advertised men's apparel, the men of State have been wearing the styles of State from HURD'S for the past 26 years. Let us show you the modern styles for 1943 as we did your father for 1920.



Arrow Shirts — Ties — Underwear — Lord Jeff and MacGregor Sweaters  
Hickok and Swank Jewelry — Hamley Belts  
Pendleton Shirts and Robes — Interwoven and Pacer Hose  
Timey and Hickey-Freeman Suits and Top Coats — Mayest Sports Coats  
Stetson Hats — Seaforth Toiletries — Belmont Rainwear

— ALSO —

United States War Bonds and Stamps

Air  
Conditioned

**HURD'S**  
LANSING AND (H) EAST LANSING

YOU CAN'T LEAVE DISSATISFIED

Fluorescent  
Lighting

Allied

FOR  
UNITED  
BOND

VOL. 337.33

Today  
Camp

... Well 11

Catching the  
nation. MSC's to  
gain was exhibi  
feature on Kate  
Nash. The  
Says New York  
warrior.  
Kate provided  
Dean of  
with "Constitution"  
After "Constitution"  
place. Another  
speeches during  
ing with the

... Barchen

Added to the  
articles, but to  
are the familiar  
tale of humble  
ing. It is expla  
Varsity club me  
longer found t  
ing of the boys  
as they have it  
and freshmen w  
izable a block  
members of the  
are still expect  
proper respect

News

LONDON, 8  
Sept. 8-43. The  
ing long-range  
erial history. A  
can interpret  
found that the  
which blasted t  
we need know  
the results will

LONDON, 8  
News editors  
and editors of  
the magazine  
relocated the  
er that went b  
day that Hous  
intended to be

WASHINGTON  
APR—Bureau  
Marty said he  
the war effort  
made all kinds  
double duty as  
the men.  
need more  
men and the  
of the army  
into the army

ALLIED  
SOUTHWEST  
day long and  
movement has  
shopping have  
declared that  
headquarters  
a firm move  
has captured  
by town of S

Fruit, Cider  
by Labor, F

Public sales  
in the border  
will be limited  
of the labor  
demands of the  
for processing  
these restaurants  
Lore of the  
partiment, ann

Saturday m  
It are the ho  
public sales.  
made at other  
week, no adv  
be taken, and  
be made.