

FROSH REGISTRATION TOPS ALL FORMER MARKS

State Board Approves Budget

Department Head Changes Completed; Accept Land Grant

State Board of Agriculture, governing body of Michigan State college, approved the budget of Michigan State college for 1939-40 with a total of \$3,873,566.12.

The approved budget for 1939-40 revealed \$2,500,000.00 came from state appropriations, \$73,500 from land grant interest, \$263,291.89 from the federal government, and \$530,000.00 from other sources, including student fees.

OSBORN LAND
Osborn Hunt, a general manager of General Motors, donated a gift to Michigan State college in the form of a land grant, and the money derived from the sale of the property will be set up for a scholarship fund.

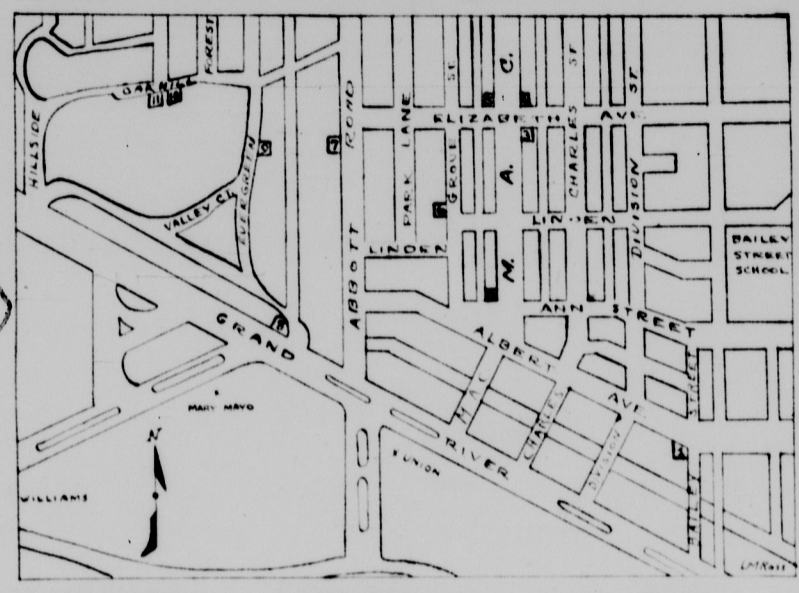
Y Groups Fete Freshmen
Freshman girls were guests of honor at the annual coffee given by Peoples church by Y. W. C. A. Wednesday evening.

Former State Economist To Teach in Lehigh
Dr. Thomas F. Jones, assistant professor of economics, was one of fifteen men appointed to Lehigh university faculty, recently announced by Pres. C. C. Williams.

Under the Wire

BUCHAREST, Rumania, Sept. 22.—European diplomats today pondered if the slaying of Rumanian Premier Armand Calinescu constituted an attempt at Rumanian Nazi coup.

Map Shows Sorority Houses



- 1. Alpha Gamma Delta
2. Alpha Omicron Pi
3. Alpha Chi Omega
4. Alpha Phi
5. Kappa Kappa Gamma
6. Kappa Delta
7. Sigma Kappa
8. Alpha Xi Delta
9. Zeta Tau Alpha
10. Chi Omega
11. Kappa Alpha Theta

Rushing Rules Are Slated For Women Students

The map printed above shows the location of the sorority houses which will be holding open houses from 2 till 5 p. m. tomorrow and Sunday.

Afternoon dresses are suitable for all parties except the preference dinner, which is formal and requires a dinner dress.

Facilities for housing patients include nine private rooms on the second floor. These will be used for surgical patients at least during the early stages of convalescence.

Holland's aides at the center include two other doctors, Dr. Leonard Finkler and Dr. Louise Schulte, and a staff of twelve nurses headed by Miss Candace Appleton.

Because even the best staff is hampered by inadequate or poor equipment, it has been provided for the new center. Included in the hospital equipment is a completely equipped operating room, new X-ray apparatus, and an oxygen tent.

Tryouts for Fall Play Scheduled
Tryouts for the fall term play, "Our Town," have been announced by Dr. W. Fawcett Thompson, head of the dramatics department.

Engineers to Fly to Minneapolis
Robert Schulte, chairman of the student branch of American Institute of Electrical Engineers, Professor M. M. Cory, counselor, and W. Knickerbocker (18) expect to fly to Minneapolis for the district meeting of the institute September 26.

Red Buses Now Serve This City

Charge Five-Cent Fare With Cent For Transfer
Red buses of Inter City Coach Line company started the East Lansing to Lansing service recently.

The Inter City lines have inaugurated the round-trip service, which is transferred to Lansing bus routes.

SHUTTLE LINE
A new feature of the Inter City service is the shuttle line connecting East Lansing and Grand River.

10-MINUTE SCHEDULE
Buses on the main route to Lansing operate on a ten-minute schedule.

Immense Building Job Nearing Completion; Hospital Finished
The building this year and a few patients already are confined there.

By Len Barnes
Students returning to M. S. C. this fall are finding the campus strangely transformed by a \$5,000,000 building program.

On only two of the buildings, the auditorium and the Fred C. Jenison memorial field house and men's gymnasium, is the major share of work yet to be done.

The fieldhouse, which will be large enough to accommodate a football game, and the gymnasium adjoining it, which will contain one of the country's finest swimming pools, will be done soon after.

Stevens T. Mason men's dormitory was completed last year at a cost of \$500,000.

Tryouts for the fall term play, "Our Town," have been announced by Dr. W. Fawcett Thompson, head of the dramatics department.

Engineers to Fly to Minneapolis
Robert Schulte, chairman of the student branch of American Institute of Electrical Engineers, Professor M. M. Cory, counselor, and W. Knickerbocker (18) expect to fly to Minneapolis for the district meeting of the institute September 26.

Enrollment Expected To Hit 6200 Total For Fall Term

Today's Campus Last Laugh!

Today's campus was a scene of activity when Prof. Robert of the psychology department took the wind out of the sails of a couple of quizzing upper-classmen working in the registration department.

Mixed Up
Said the fresh, "I'm mixed up. I don't know whether I'm in or out. I don't know whether I'm in or out."

Page Barnum
There's one born every minute.

Registrar
Registrar R. S. Linton

Tower Guard Plans Informal Tea
Tower Guard, sophomore women's honorary, will begin its activities for the year with an informal tea for all Lansing and East Lansing freshmen women.

Mixer Scheduled for Two Ballrooms Saturday Night
All college student mixer this year will be held simultaneously at two places, Union ballroom and gymnasium, Saturday from 9 to 12 p. m.

Alpha Phi Omega, national service honorary, Green Helmet, sophomore men's honorary, and Tower Guard, sophomore women's honorary, are co-sponsors of the party.

Chairmen of the sponsoring organizations are Green Helmet, Joan Lifesig, Alpha Phi Omega, Sam Yeater, and Tower Guard, Jean Widick.

Upperclassmen Start Classifying Today

With registration of freshmen and transfer students having already reached a new peak for Michigan State college, a record-breaking attendance of approximately 6200 is anticipated by Registrar R. S. Linton for fall term.

2500 new students have registered as compared with 2198 for last year, making this the largest freshman class in the history of the college.



President R. S. Shaw

PLAN PRESIDENT'S CONVO
The president's convocation at 3 p. m. today in Demonstration hall, will give all new students a chance to hear and see President R. S. Shaw.



Registrar R. S. Linton

Tower Guard plans a swimming party one night next week to learn whether or no his contention has been proved.

Closing freshman week activities will be a special service for new students at Peoples church Sunday morning and a vesper service in the evening.

Registrar officials are handling door ticket sales this year. Art Howland and his Dixieland band, and Coy Ecklund with the former Frankie Fendle band will play in the gymnasium.

Registrar officials are handling door ticket sales this year. Art Howland and his Dixieland band, and Coy Ecklund with the former Frankie Fendle band will play in the Union at the same time.

# Michigan State News

Entered as second-class matter at postoffice, East Lansing, Mich. Office located at ground floor of east wing of Union Building, Room 2.  
Published Tuesday, Thursday and Saturday mornings during college year by the students of Michigan State College. Price: 12 per year.  
Telephone: College Phone 5-9118. Editorial: East 576. Business: East 578.

Member 1939  
Associated Collegiate Press  
Distributor of  
**Collegiate Digest**

GRADUATE MANAGER: VICTOR E. SPANOLO  
MANAGING EDITOR: WALT RUMMEL  
BUSINESS MANAGER: WILLIAM COLLINGS  
FACULTY ADVISER: RALPH NORMAN

## College is An Individual Effort

Upon entering Michigan State this week, you now are a member of the most friendly campus family in the collegiate world. You are one of 2,700 who will be entering college here on the historic banks of the Red Cedar. Although composing a large family of students and faculty, a close spirit of friendship marks this interaction.

How successfully you fit in with this group depends on you. In this commonwealth, everyone must do his share in production. A small group of laggards may retard the capability of the progressors. Chances are 100 to one that this year's freshman class will lead the way in production, but it is highly important that you realize the hard work ahead of you, adapting yourself to these new conditions of study, college environment, and self-discipline.

Here, you won't have your teacher or your parents chiding you when you fail to study. Your advisor and instructors will help you in making decisions but the final say-so rests upon you. Education is an individual thing. Some one person can chart the way of study but work, hard work, must come from you.

Make it your aim to do more than you are asked to do. Avoid the pitfall of many who do only the required amount of work asked of them. Certainly if you shirk your outside reading or other essential features of study, you can only hope to gain a minimum of knowledge. Any benefits gained from added study go to you, not the instructor who seems a "Simon Legree".

But probably the most important bit of advice that may be given freshmen can be stated in one word—persistence. Persistence in every part of your work will spell success for you as a student. The ability of never giving up even when things look set black will make it possible for you to succeed when others are failing.

So during your first week on campus, do not be afraid of asking people questions regarding anything you don't understand for anyone will be glad to volunteer information. Be friendly and other persons will be friendly to you.

## the clothes line by charlotte

So you're a brand new co-ed, and clothes' money—or lack of it—has become the most frightening problem of your young life? Well, ease your worrying, for straight from the lips of upperclassmen girls—veterans in the intrigue of looking smart, we hear that this clothes problem is really all very simple. And indeed they are.

For instance, Camille Reynolds advises that planning a whole season's wardrobe around one becoming color cuts out expenses and "individualizes" you. Camille chooses blue and almost always wears varying shades of it with accessories providing contrast. On the other hand Betty Jo Aschard has an unshakable governing secret, which unfortunately not many of us can take advantage of. She finds that by having a wardrobe of shoes and outfits to match that she never wears anything out.

A word of warning from Jean St. Charles is would-be campus sophisticates to that they should read about fashion magazines before each shopping trip, eliminate the styles too giddy for themselves, and then just go shopping with assurance without ever thinking of buying. "Without the passage of time," says Jean, "it is not to be looked upon as the abundance of beautiful clothes, but all the things of the best of the season."

So when a brand new girl starts with a few dollars, it is better to invest them in a few good pieces of clothing than in a lot of cheap, cheap clothes. A few good pieces of clothing will last you through the year and you will look smart. A few good pieces of clothing will last you through the year and you will look smart. A few good pieces of clothing will last you through the year and you will look smart.

## Book Store Under New Direction

Michigan State College book store, operating its forty-fourth year of unintermitted service this week, under the management of Mrs. Norma Wagner, who has been in charge of it for the past 20 years.

The book store, a college institution, is operated under the direction and administration for the purpose of supplying Michigan State students with school supplies at a low cost. It was organized in 1896 and was reorganized in 1912 as a non-profit corporation with no capital stock, all corporation members being in the college.

Faculty of the college and management of the store are continuing the offering of college tests and supplies at a 10 to 15 per cent reduction under list price.

## THRU Smoked Glasses

OF E. E. WHITE

**Notable Changes From** last year's setup are George Cope, who has officially announced that his investment in the Alpha Psi house was a four venture and he swears off them from now on. Then who should turn up but Hugh Telford on his bi-weekly pilgrimage to see Jeanette Bass—this year Telford drives a big gray Packard 120. He reports that he also drives a company Studebaker. There's no depression there.

**Most Embarrassing Moment** reported is the freshman co-ed who answered the telephone at eight bells Tuesday night. She left her room in a hurry adorned only in a sweater. Six had a right to feel sore because men are seldom found up there. As she was about to step out of the booth, along came two gentlemen helping some one. Everything would have been all right, but she screamed, thus attracting too much attention.

**More Balls and Chains—** State News faculty adviser Ralph Norman did as everyone guessed he would and married Gertrude Brummelhoff August 26, in Grand Rapids. Rosie Gorsuch, Alpha Chi, and senior secretary, is planning to marry Dick Colma, football coach. Another footballer, George Koyenich, is known to be engaged to Connie Lestyard.

Editor Walt Rummel is feeling like a king because he finally turned the trick and got a ring on the finger of Alpha Gam Gret. They turned the trick in Gret's home town, Portland, a few days ago.

# COY EKLUND

## AND HIS BAND

FEATURING THE SOLOISTS OF FRANKIE PRINDLE

Phones—Res. 4-2088, Office 2-8711 A. F. of M.

### RIDE THE BIG RED BUSES TO AND FROM LANSING 5c INTER CITY COACH LINE COMPANY EMPLOYEE OWNED AND OPERATED

# SWING IT!

FOR RUSHING PARTIES, OPEN HOUSES, TERM DANCES

ENGAGE THE BEST MUSICIANS - MEMBERS OF LOCAL 303

## American Federation Of Musicians

THE OUTSTANDING CAMPUS DANCE BANDS and ORCHESTRAS are Members of A. F. of M.

YOUR BEST STUDENT MUSICIANS ARE MEMBERS

Call the Secretary (Mrs. Carl Dewey) 415-5620 or 2-7036 for List of Leaders

### KRESGE'S 25c TO \$1

## If You Are Renting a ROOM

**STUDENTS:** These Kresge furnishings make your room more enjoyable—more satisfying—more livable!

**HOME OWNERS:** Cheerful, attractive rooms rent more readily and help you keep your tenants!



**Study Lamps 69c to \$1**  
Indirectly shaded for a soft, yet clear light—easy on your eyes! Choose from a variety of new styles, priced exceptionally low! Goose-neck lamps at 69c.



**Lamp Shades 25c to \$1**  
A great selection of new, cheerful patterns in fresh, charming colors. Sizes to fit all your lamps! Start at Kresge's.



**Waste Basket 25c**  
Most an enclosed trash-can—and creates in the appearance of a room—serviceable and practical!



**Throw Rugs 29c to \$1**  
Fluffy, rag rugs and others in an interesting variety of exceptionally well made styles. Every one made for your comfort!



**MAGAZINE RACKS 50c to \$1**  
Perfectly charming pieces of small furniture, finished in rich walnut! Two handy sections to hold lots of magazines.



**Small Tables \$1 to \$1.98**  
Modernistic and period designs lend smartness to a room at a very small cost! Beautifully constructed. Finished beautifully in Walnut.

Laundry Bags	39c
Shoe Bags	25c
Electric Extension Cords	25c and up
Electric Bulbs	10c—15c
Mirrors and Pictures	25c—\$1

### MICHIGAN STATE LAMP SHADES

8-in. Boudoir Size Shade with "State" Letters and Seal

# 20c

12-Inch Bridge Size Shade, 25c

### KRESGE 25c TO \$1.00

216 SOUTH WASHINGTON The Green Front Store

### Rushing Parties - Open Houses - Terra Dance

# Dusty Rhodes


AND HIS ORCHESTRA

Formerly NATE FRY

THE SAME FINE BAND UNDER NEW AND CAPABLE MANAGEMENT

For Information Call 2-8375 Member of A. F. of M.

### STATE'S SMARTEST DANCE MUSIC



## ARN DECAMP AND HIS ORCHESTRA

Formerly Bill Porter's Band

### RUSHING - FALL TERM PARTIES - FORMALS

For Future Dates Phone 2-8381

Member American Federation of Musicians

CLASSIFIED

Room for instance. Very desirable... LAUNDRY—Fair price. Pickup and delivery. Phone 4-5777. Mrs. Johnson.

FOR RENT—Furnished apartment, one Green, Phone 2-2114. Marjorie Smith. Patronize State News Advertisers.

Spartan Offers Trip to Fair

You can fly to the World's fair this year on Spartans dough, according to Norwood Hubbel, editor of the Spartan, campus serio-comic magazine, if you sell enough subscriptions to the magazine.

The grand prize to the student selling the greatest number of subscriptions is transportation to and from the fair via American Airlines, room in a hotel for two days and nights, all meals, and a ticket to the fair.

Other prizes include a choice of any \$2.00 dress featured by the Style Shop to the girl... The contest will open Saturday, September 23, and will close at midnight, Saturday, September 24.

Guest performers will include Alice Andersen, soprano, accompanied by Margaret Goodell, Violon Antilla, pianist, Betty Johnson, violinist, accompanied by Kathryn Freeman, and Roscoe Wells, pianist, all students at Michigan State college.

Guests will include Mrs. Owen Reid, wife of a member of the music faculty, Mrs. Murray-Barnhart, and Miss Lucille Price, and patrons, pianists, and pianists. Mrs. F. L. Austin will assist Mrs. Reid as hostess.

Guests will include Mrs. Owen Reid, wife of a member of the music faculty, Mrs. Murray-Barnhart, and Miss Lucille Price, and patrons, pianists, and pianists. Mrs. F. L. Austin will assist Mrs. Reid as hostess.

A little bit INDEPENDENT

That Michigan State will be free of wall-flowers and mail-cheers for another year was assured yesterday when Kelvin Kiebler, president of the Independent Men's council, announced plans for the re-opening of the student date bureau sometime next week.

Kiebler also announced that the popular Saturday afternoon radio shows again will be presented by the Independent council soon. These programs were held during the 1938-39 college session and are wholly comprised of student talent.

Two Independent Men's leagues, too, will get under way in the near future. Twenty-four men's tennis-tennis teams are expected to inaugurate fall play in the Independent Men's tennis-tennis league Monday, October 2, and the debating teams also sponsored by the independent organization will begin competition within a week.

President Kiebler says any student interested in captaining a team in either of these leagues to contact him immediately.

Jose Wiese, freshman cracked, at the end of a trying second day of Freshman Week. "Now I know why they call this a 'cow college.' They've been herding us around like a bunch of cattle all day."

Forestry Building on Campus Only Part of Department

Prominent among State's various claims to fame is the Forestry department, housed in a two-story building erected on the campus in 1930. In addition to the building on the campus, the department maintains a summer camp, and a field laboratory in the vicinity of East Lansing.

Over a thousand acres of forest, experimental land, and woodland are maintained by the department for on-the-spot research. Laboratories and extensive technical equipment are contained in the forestry building.

The department, headed by Professor P. A. Herbert, is proud of its summer camp located some 15 miles south of the Soo on the St. Mary river. The buildings formerly housed a local agriculture school and were donated to the college by the county. The purpose of the summer camp is to give forestry students actual field experience and an opportunity to use their technical training.

Professor Herbert, who expects about 200 forestry students this year, has just returned from a year's leave of absence which he spent in graduate work at the University of Michigan. Two new graduate assistants, Fred Dickinson and Richard Fry, have been added to the staff.

Prospective Cheerleaders—Freshmen or upperclassmen interested in trying out for the 1939-40 cheerleader squad, report to Sam Yeiter Saturday, at 3 p. m. in the stadium.

Prof. M. M. Cox has been appointed chairman of the membership committee of the Michigan section of the American Institute of Electrical Engineers, and a membership on the national committee.

FAME! FORTUNE! BEAUTY!

We aren't making promises or signing blank checks, but it is rumored that there is room for more than several freshmen in the brains (business) department of the State News.

LEISURE! CULTURE! HAPPINESS!

There are jobs for both men and girls, with equal opportunity for both to gain experience in business methods and to work up to title and salary positions in later years.

A meeting will be held for all those interested, on Friday, Sept. 22, at 5 p. m. in the State News office, Room 8, Union Annex.

Welcome Freshmen

We Are Featuring BABY CURLS



Thank goodness, no pigtales are included in our favorite "Little Girl" look! For once, hair can be the easiest part of it all! It's simply "short and curly" . . . the kind of a hair-do that men can muss up and not make a woman mad.

TEN \$6.50 PERMANENTS FREE! Write an advertisement this size for the Polly Prim Beauty Shop. If it is published as our regular Tuesday or Thursday ad within the next five weeks, we will give you a \$6.50 permanent wave, free of charge.

SPECIAL PERMANENT WAVE Machineless \$8.50 for \$3.00 Machine \$3.50 for \$2.00

POLLY PRIM BEAUTY SHOP 210 ABBOT BUILDING. PHONE 4-1714

Fall Registration Schedule

Table with columns for Friday, September 22 and Saturday, September 23. Rows include Classify, Pay Fees, and Classify for various departments like Arts & Letters, Business, Education, etc.

Terry Rogers Originals

FOR THE COLLEGE GIRL WHO PREFERENCES THE ULTIMATE IN CLASSIC SPORTSWEAR

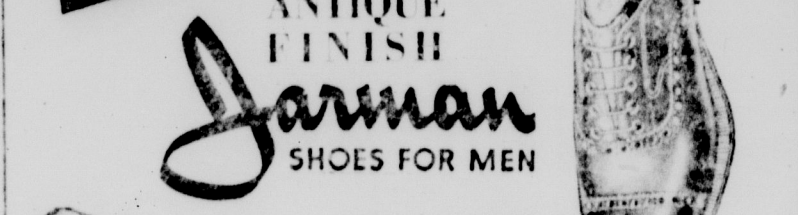


WHEN you choose a Terry Rogers Original you are at once assured A-1 rating in any fashion class. For these smoothly tailored classics abound with all the flattering details that go hand in hand with dress distinction.

AS FEATURED IN MADEMOISELLE The Style Shop 116 W. Allegan Lansing

HARRYMAN'S ...

AND AWAY YOU GO! Back to School in smart ANTIQUE FINISH Jarman SHOES FOR MEN



\$5 to \$7.50 FOR CAMPUS WEAR The rich calfskin in these smart Jarman styles is hand-rubbed with a special stain that gives it a rich and deep shade of tan—Come in and see how smartly it goes with your new fall clothes.

MAX HARRYMAN SHOES 118 SO. WASHINGTON AVE. LANSING

SEARS 53RD ANNIVERSARY SALE A FEAST OF VALUES SAVE ON -- Room Furnishings NOW at Sears!

Advertisement for Sears furniture sale featuring items like Rich Rayon Velour Occasional Chair (6.53), Choice of 4 Smart, New Styles! (5.53 each), Smart Knee-hole Desk (16.53), and Unpainted Student Desk (6.98).

Also Shop At Sears For These, and Save:— Throw Rugs, Card Tables, Curtains, Drapes, Linen, Towels, Blankets, and Bedspreads. SEARS, ROEBUCK AND CO. Store Hours 9 to 6 Daily and Saturday 330-312 E. Mich. Ave., Lansing, Mich.

Sign Now 1940 WOLVERINE at Lowest Prices

# SPARTAN GRID RANKS HIT BY WAVE OF INJURIES

## Independents Set for Grid Opening

Led by Briggs Acres, 1939 Independent Men's League touch football champs, the I.M.L. will within the next two weeks begin their regular schedule.

The league, which was a few years ago playing games when they could get only seven men together for a team and had no fixed schedule, has risen rapidly. Once considered too weak, even by the independents themselves, to think of challenging the supremacy of the long established Inter-Fraternity league, it is now ranked as being at least as powerful as the Greek letter group.

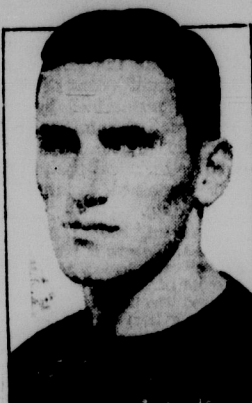
A great deal of interest was

aroused last year over the possibility of a game between the champs of the two leagues. The main promoters of the idea being the independents, desirous of dispelling for once and for all, the mythical supremacy of the Fraternity league. Due to conflicts, however, it was impossible to schedule the game.

Assistant Director of Athletics Framond, who supervises all intramural athletics, is trying to plan the schedules so that the long sought for undisputed championship of the touch-football leagues can be decided.

Briggs Acres, if only by virtue of their unblemished record last year, rules as favorite again this year, at least until they have been defeated. Bealton, runner up in '39, has several of last year's team back this year and is in a good position to cop the gonfalon.

## Can He Do It?



Jerry Drake, East Lansing senior, has been named as Johnny Pingel's successor. Drake saw little service last year, but coaches believe he has what it takes.

## Spartan Sportfolio

By DON ANDERSON

This is going to be an interesting year for Michigan State football fans. Such is always the case when coaches are faced with the problem of replacing a lineup riddled by graduation with men of comparative inexperience. New players are unpredictable in that no one knows exactly what they will do in the heat of competition. Thus, Spartan grid fans are in for an interesting time this season, for Coach Charley Bachman will be forced to depend a good deal on players who have had little or no experience under fire.

We were talking to Bachman the other day as he prepared to send his squad into another practice session. Before us the players were engaged in various limbering up exercises, while at our back the ever increasing shadow of State's new fieldhouse lent a progressive air to the surroundings. Workers perched precariously many feet above the ground were busy with riveters and the ensuing din forced us to incline our head to catch Bachman's words. His first statement bore out our words in the first paragraph.

"We've got 15 sophomore backfield men out there," he said. "From them we must select the ones who will bear the brunt of service this fall. It is going to be a tough job and I won't really know until mid-season just what I have, for it is going to take time to develop this material. With an inexperienced squad such as this, you are half through with the season before you are ready for it."

From this we concluded that Bachman believes he will have a much better team in the next two years than he will this year. By that time the present crop of sophomores will be seasoned veterans. But make no mistake in underestimating the ability of these sophomores, for they had fair to be the best crop of second year men in many seasons.

Bachman is neither pessimistic or overly optimistic about the immediate future. He believes he will have a good team this year, but refuses to commit himself as to how his charges will fare with the tough schedule confronting them. Time alone can determine that. Part of his optimism comes from confidence in a line that has both ability and experience as well as reserve power, for it is mainly in the backfield where inexperience reigns. The line is big, Guard Lyle Rockenbach at 192, being the lightest man in the forward wall. For all its weight, the line men are fast and agile on their feet.

Back of this line, the search is still on for a suitable successor to Johnny Pingel. Jerry Drake has the call at present, and on the basis of his showing so far, gives every indication of being just what the doctor ordered. We asked Bachman about Drake.

"Jerry is coming fine," was the answer. "His kicking is much improved over last year, and his passing is very satisfactory. Most people, used to the superlative kicking we have received in the past from boys like Al Aggett and Johnny Pingel, don't realize that Drake is far above the average as a punter."

It means anything, Drake will exceed the fondest hopes held for him. Always a conscientious worker, he endeavored all summer to improve his kicking, booting the ball at a target of old automobile tires suspended from a pole on the practice field.

Whatever the outcome is this year, we feel that the 1939 Michigan State football squad will give a good account of itself. It probably won't equal records hung up in the past, and it is more than certain to lose its share of games. But even to the most casual observer at practice drills, two things, both very important to the welfare of any football team, are apparent. These two things are condition and love of game. Inexperienced though they may be, the Spartans aren't hampered by any dislike of hard work, and this will facilitate quick learning. As for their physical condition, little is left to be desired. Almost without exception, the squad reported in lip-top shape.

So, we would like to take this opportunity to predict that we think Michigan State will have a good football team this year. Not a great team by any means, but rather a team of potentialities, most of its wealth being a fine crop of sophomores who will pay big dividends once they gain the needed experience. So, you incoming freshmen who are planning on seeing the Spartans go through the year undefeated, are doomed to disappointment, for Michigan State is likely to lose several football games this year. But you can be sure of one thing—the eagerness and fight which is present on this year's squad will insure interesting football.

## Derrickson Shifted

By VIC SPANIOLO

Injuries are playing havoc with Coach Charley Bachman's plans for a starting eleven only a week before the Michigan State opens the season with Wayne.

In recent days Bachman has sent the gridgers through their drills with his fingers crossed fearful that injuries would strike again. Latest of the injuries was Herman Kiewicki, veteran quarterback, who last night injured his right ankle. Ron Alling, ranking center, is suffering from a cold and did not take part in the practice last night.

The leg injury to Kiewicki forced Bachman to switch Paul Derrickson from full to quarterback.

Already this week Bachman has watched three of his ends hobble off the field with injuries. Bruce Blackburn, Ralph Bennett, Mike Kinck are all laid up and it is hard to say when they will be back for activity.

Practicing twice daily the gridgers have been going through heavy drills covering all phases of defense and offense. Bachman and his aides have not spared the

Amon and Roman Kaman are waging a fierce struggle for starting position against Wayne. The condition of Herm Kiewicki throws the quarterback situation into a free for all with Don Rossi, senior veteran, Derrickson, and others fighting for the call.

## FACULTY:

### THE MICHIGAN STATE NEWS

Announces a Special Subscription Rate of \$1.50 Per Year

By Carrier in East Lansing

## KEEP UP WITH THE STUDENTS!

The Michigan State News, the official college newspaper will keep you informed on the latest events at your school. Mail in the coupon below to have the State News brought to you three times a week throughout the school year.

## Michigan State News

### MICHIGAN STATE NEWS

3 Union Annex, Campus

Enclosed you will find \$1.50 for which will you please send me the Michigan State News for the coming school year.

Name

Address

This offer good in East Lansing only.

The Students' Church, All Denominations Represented  
**PEOPLES CHURCH**  
Morning Worship at 9:30 and 11:00  
Sunday, Sept. 11—"Freshman Sunday"; cello solo by Prof. Alexander Schuster. Vesper Services 5:00 p. m.

BUY USED  
**BOOKS**  
SAVE MONEY

SUPPLIES FOR ALL COURSES  
**CASH**  
FOR  
YOUR OLD TEXTBOOKS  
WHETHER USED HERE OR NOT

**CAMPUS BOOK STORE**  
OPPOSITE UNION

Howard Pound and Bob Friedlund, two big sophomore ends, have many similar characteristics on the field. Both are built much the same, and have the same free easy gait when running. In addition, they chum around together a good deal off the practice field. It is hard to think of one without visualizing the other.

**KEN'S**  
MODERN BARBER SHOP  
Across From the State Theater

Have you a room-mate?  
Have you a radio, too?  
Do you always agree about programs, time to listen, etc.?

Let us equip your set with earphones. Speaker can be used when desired.

They will improve the tone quality and permit you to enjoy your favorite programs to the fullest, without the room-mate hearing anything to distract him.

Cost \$5.65 for one set, including cushions. Called for and delivered anywhere in East Lansing.

Dormitory residents, see your supervisor for special rates on quantity orders.

HI-FIDELITY Earphones \$6.50 Extra

**Richard W. Hutchinson**  
Radio Service  
PAR EXCELLENCE

1525 Osborn Ed. East Lansing  
M. S. C. Grad. 1933. B.S. 1935

## To East Lansing Residents: The Inter City Coach Line Co.

### ANNOUNCE COMPLETE BUS SCHEDULE:

#### MAIN ROUTE

Leave Bogue street and Grand River for Lansing on the hour, and every ten minutes from 5 A. M. to 7 P. M., and every 15 minutes from 7:15 to 12 midnight.

#### Route As Follows:

Leave Bogue street on Grand River, down Michigan to Washington avenue, Lansing. Re-route East Lansing via Michigan to Mifflin, then south to Kalamazoo, then north on Myrtle to Michigan and Grand River to Bogue.

#### SHUTTLE ROUTE

First bus leaves Touraine and Grand River 6:50 A. M., next at 8:48 and every 20 minutes until 8:48. Also 2:28 P. M., and every 20 minutes until 6:30 P. M.

Leaves Orchard and Grand River starting at 6:40 A. M., and every 20 minutes until 9 A. M. P. M. schedule starts at 2:40 P. M., and every 20 minutes until 6:20 P. M.

#### Route As Follows:

Starts at Touraine and goes east on Cowley to Grand River, and east to M. S. C. avenue, then north to Parkham drive, then south on Bailey to Beach, then east to Orchard, then south to Grand River, then west on Grand River back to Touraine. Fare 5 cents, transfers to main route free.

FARE 5 CENTS WITH 1 CENT TRANSFER

School Children 6 Tokens for 25 Cents, Transfers Free

Telephone 4-4501

### GREETINGS TO THE

## Class of 1943

### FOR BREAKFAST, LUNCHEON OR DINNER

The next best place to home, is

## The Hunt Food Shop

### WALK-OVER

# Steerback



### Tanned to take it!

• If a cat has nine lives, our Walk-Over-DOG HOUSE has nineteen. Sulfur-proof Steerback, easy as a slipper. Chunky, balloon crepe soles. Sand or Setter Brown. \$5.00

## BURTON'S WALK-OVER SHOE SHOP

**"MARK-MAKER"**  
indispensable in sheer wool

You'll love it on sight this deliberately simple frock with its trim collar, unusual buttons, sleek hips, and flared skirt. Loads of spirit-lifting new colors that rate more than a second male glance. 9 to 17.

**\$16.95**

**Maurice**  
DISTINCTIVE APPAREL

205 North Washington

**GENUINE LEATHER**  
**NOTE BOOKS**  
 YOUR NAME STAMPED IN GOLD  
**FREE**  
 On All Leather Notebooks Bought Here  
 Also On  
 SLIDE-RULE CASES  
 and  
 FOUNTAIN PENS BOUGHT  
 HERE

**THE INK POT**

**STUDENT LAMPS**  
**SEE OUR STOCK OF I. E. S. LAMPS**  
 Low Priced and Serviceable  
 Lasts Longer — Costs No More  
**East Lansing Electric Co.**  
 126 West Grand River

**Lansing Colorplate**  
**Company**  
 Manufacturers of Printing Plates  
 317 N<sup>o</sup>. LARCH STREET  
 PHONE 27022

Welcome to  
**M. S. C.**  
 While Here Let  
**PLETZ and SON**  
 Be Headquarters for Your Motoring Needs  
 Michigan Avenue and Harrison Road  
 SINOLO PRODUCTS AAA SERVICE

**STUDENTS!**

A successful year is assured you if you get off to a good start by having the proper equipment. Our texts and supplies are authorized by your professors and may be obtained at a considerable savings to you. We also carry a complete line of student accessories such as stationery, jewelry, pennants, notebooks, laundry bags, etc. Good luck during the coming year!

**STATE COLLEGE BOOK STORE**  
 130 WEST GRAND RIVER

**FELLAS--**  
**WELLS HALL**  
**Boarding Club**

**NOW OPEN**

MEALS	TICKETS
7:00-7:45	\$4.00 Per Week
11:30-12:30	4.50
6:30-6:30	

**MAY BROS.**  
 The Hat Store of the Town  
 225 South Washington Ave.

**Harriers Gird For Tough Season**

**Van Auken's Loss Duils Future For Brown**  
 By JOE SIMEK  
 Anxious to get a line on his harriers, Cross Country Coach Lauren P. Brown already has a handful of men working out although the first practice is not called until Monday afternoon. Freshman hopefuls begin work Tuesday.

Unlike most schools, cross country is not considered a minor sport at Michigan State. In recent years there has been no shortage of candidates, and awards are made on the basis of performance in meets.

**ONLY THREE BACK**  
 Coach Brown will have only three major lettermen from last year's team around which to mold his 1939 contender for the IC-4A championship, which State relinquished last year after a five-year stranglehold.

Leading the veterans is Captain Dick Frey who will be out for his third major letter. Frey has been a standout here ever since his first fresh meet. However, there is some doubt if he will reach his old time effectiveness, due to a pulled tendon which put him on the sidelines last spring, and which was slow to respond to treatment.

Roy Fehr and George Keiler are the other two major award winners. Both enjoyed great success last year and are counted on heavily for top places again.

Minor lettermen returning are Bill Mansfield, Al Mangin, Warren Anderson and Ed Mills. Mansfield should be set for a banner year as he has shown remarkable improvement every year. Mangin, who was good enough to make the IC-4A trip last fall, saw considerable action in the east this summer and is in good shape for the four-mile grid.

**LOSE VAN AUKEN**  
 State's title hopes received a severe setback when Ed Van Auken, who was last year's prize find, transferred to Michigan's medical school. However, the return of Ed Mills will help to offset the loss of Van Auken.

Sophomores are counted on to round out the team, although there are several veteran trackmen who will make serious bids, and Brownie will be on the lookout for another Van Auken.

Given "Arkes" Vaughn paced the fresh last fall and is a veteran at long distance running. However, Darwin Bruce, who shared the captaincy with Vaughn, is ineligible for the fall term. The loss of Bruce will be keenly felt, as he is rated a real coner.

Stan McKee, converted from end to tackle this year, can kick a ball farther than any football player in captivity. The big 221-pound boy's booming punts continually carry far over the safety man's head. Contrary to popular opinion, McKee, despite his size, is a very fast kicker, so he should have few of his kicks blocked.

Les Bruckner, 215-pound quarterback switched to tackle this year at his own request, has been nicknamed "Rasputin" by his teammates due to his swarthy complexion and a shock of long, black hair. Coaches are hoping that Les will prove somewhat of a "holy devil" to opposing teams.

**KNOX**



**IT'S NEW!**

The colorings do-it. Special mixtures, rich and right for your tweedy sportswear—with a two-tone band to harmonize. Knox, \$5—The Maze, \$2.95 or \$3.95.

For smartest in Campus Wear—coats, jackets, sweaters and all furnishings—needs in wide selection, moderately priced, see our complete stock.

Come in and get acquainted.

**MAY BROS.**  
 The Hat Store of the Town  
 225 South Washington Ave.

**Looks Great**



Ketzko, better known as "Butch" to his teammates, seems headed for a big year in the Spartan line. In practice this far he has proved a tower of strength at the left tackle position. Tipping the scales slightly over 200 pounds, he is one of the strongest men on the squad.

**East Lansing Eleven Faces Eaton Rapids in Opener**

By BOB MCCARTHY  
 Coach Fred W. Shaver will pit his Trojan eleven against the invading Eaton Rapids team this afternoon on the East Lansing gridiron in the season's opener for both teams.

Shaver seemed quite confident that he had a forward wall equal to or better than last year's and one that is improving rapidly as practice continues. From end to end the Trojan mentor pointed out two good, experienced boys for each position.

In the backfield Shaver stated he had only one returning starter. However, new material has shown some surprisingly good work and from this group the best remaining parts will be filed.

Starting at the right flank will be Bob Atkinson, a junior. Out of play most of the '38 season due to injuries, Dave Gutter is slated for right tackle. At right guard veteran Bob Hixon will resume his last year's duties. Dick Hubbard, sophomore, and all will start his fourth grid at the guard slot. Stucky Jack Decker, stand-

out by far as East Lansing's best man at left guard.

Bill Hubbard, sophomore, holds a slight edge over Dick Anderson and has received the nod for left tackle. Harry Brown, shifted from

**Intramurals Will Open**

The intramural wars, dormant during the summer sessions, open up their big Berthas on the athletic front as touch football and bowling get under way. Schedules have already been drawn for inter-dormitory football and inter-frat football and bowling. Only one group, the independents, have not as yet released their touch football schedule.

Touch football warfare begins October 2 at 7 o'clock, as the ward teams of Mason, Abbot and Wells hall clash for the first time. The following evening at 7 the frats get under way, and on October 16 bowling makes its bow.

Both frat and dormitory leagues are divided into four blocks. The dorm league, with new blood in the form of Abbot hall, will have President 6 of Mason hall defend-

toe to end, is the choice for left end. However, Paul Jheroux is more than likely to break into the lineup some time during the game.

At quarterback, Bob Drake seems to have the inside track, shading Bob Ingersoll by a small margin. Calling signals at left half and doing all the punting and passing, will be Roy Dyer. Dyer, also is East Lansing's best punting back. Phil Emmons has edged ahead of Vern Sharp and Bob Kennedy and will open at fullback.

Eight stiff battles face East Lansing this year. The Trojans will compete in the Twin Valley league for the first time. Six schools are in the conference, including East Lansing, Adrian, Albion, Calhoun, Sturgis and Marshall are the other members. The schedule:

Sep. 22, Eaton Rapids; Oct. 2, Sep. 26, Central; Oct. 9, A. A. State; Oct. 12, Sturgis; Oct. 19, Albion; Oct. 26, Calhoun; Oct. 27, Marshall; Nov. 3, Sturgis; Oct. 31, Marshall; Nov. 10, Mt. Pleasant; Nov. 17, Marshall.

**RIVETERS DISRUPT DRILLS**  
 The noise from the riveting machines at work on the new field-house adjacent to the practice field almost disrupts drills at times. When the racket is at its height, it is almost impossible for the players to hear signals from the quarterbacks or instructions from the coaches. Charley Bachman would like to install into his backfield men some of the foot-work the workers display as they clamor about on the girders high above the ground, however.

ing champion, in block 2, while Sigma Nu are the title-holders in the frat division in block 3.

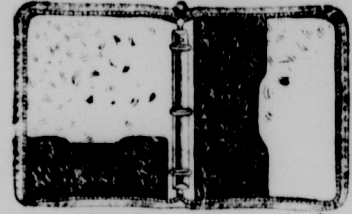
Games will take place on the varsity practice football field and baseball field and will be played in rain or shine.

**STOP!**  
 AT  
**BILL EATON'S**  
**GULF SERVICE**  
 For Full Line of  
**GULF PRODUCTS**  
 WASHING — POLISHING  
 and  
 GULFLEX REGISTERED  
 LUBRICATION  
 301 W. Mich. East Lansing

**"I WILL GET READY NOW, MAYBE MY TIME WILL COME"**  
 —Lincoln—  
**LEARN TO FLY NOW**  
 By the Lesson \$3.00  
 Complete Solo Course \$15.00  
 Art Davis School of Aviation Capitol City Airport

**Attention Freshmen!**  
 THE  
**HANOVER SHOE COMPANY**  
 invites your inspection of their Approved Military Shoes  
**PRICE \$4.00**  
 120 S. WASHINGTON LANSING

**Zipper Notebooks**



- Split Cowhide Leather
- Standard Letter Head Size
- Falon Slide Fastener
- 2 or 3 Rings

2.00  
 Others to 5.00

No Extra Charge for Embossing Name or Initials

**Liebermann** Near Michigan Ave.  
**TRUNK CO.**  
 Luggage — Leather Goods — Trunks — Gifts

**THE Favorite Combination**  
**FOR MORE SMOKING PLEASURE**

At the Aquacade, Show-Hit of the New York World's Fair, Chesterfield has the call

You see more Chesterfield smokers every place you go. That's because Chesterfield's Right Combination of the best home-grown and aromatic Turkish tobaccos is the only combination that gives them a cigarette of real mildness with a different and better taste and a more pleasing aroma.

MAKE YOUR NEXT PACK CHESTERFIELDS... THEY SATISFY



*For Your Pleasure the Right Combination of the World's Best Cigarette Tobaccos*

**CHESTERFIELD**

Copyright 1939, LIGGETT & MYERS TOBACCO CO.

# Survey Shows 86% of Students Prefer Activity Books

## 'Big Sisters' Prove Helpful To Freshmen Women

**By Jane Wigle**  
Although often considered a burden at home, M. S. C. freshman women are finding "Big Sisters" an absolute necessity on the campus. Ready to help newcomers, they take pride in acquainting them with the college.

An outstanding event of the "Big Sister" program is the "Pajama Party" to be held in all dormitories Sunday night, 9 to 10 p. m., for freshman and transfer students. Off-campus girls living in cooperative houses and private homes will be entertained Sunday, 8:30 to 9:30 on the fourth floor of the Union.

More than 200 upper-classmen are already ushering 950 freshmen

## The Timid Soul

The Caspar Milquetoast of the campus!  
That's the title Wolverine sales girls have tacked on one freshman laddie who answered their, "Have you bought your Wolverine yet?" query with a meek, "No, I'll have to wait and ask my roommate first."

## Co-Op Homes Help House Women

Although two new dormitories are built and the old, hospital transformed into a cooperative house for women, there is a deficiency in immediate living quarters for the increased enrollment of 6,200-odd students on the Michigan State campus. It was announced today by Housing Director Ronald Heath and Mabel Peterson.

The old hospital, remodeled and redecorated, is to be used as the Alice Cowles Cooperative house for women, housing 37.

Bennett house, used as an off-campus dormitory last year, has been converted into a cooperative house occupied by 14 girls. Miss Zenetta Hunter, former house mother of Robinson house, is house mother.

Mrs. Marian Schuch will act as house mother at Rockdale house during fall term. She is taking the place of Mrs. Alice Gilbert, who is ill. Robinson house, Concord house and Benson house are now being run as cooperative houses. The 108 girls who are now living in the six houses delay part of two college expenses by doing their own housework.

## Hudson Goes To Meeting

Prof. Ralph S. Hudson, 39, was superintendent of the draft board department at Michigan State college, was one of 27 expert businessmen scheduled to take part in the board's conference at the National Executive Board held with the Michigan State Fair at St. Paul recently. What he served as alternate director of the board and president of the board at the time.

## \*Chosen Over Individual Tickets

If you prefer the Michigan State college plan of selling activity books to the student body, rather than selling individual tickets, more than 86 per cent of the students agree with you. An interview, conducted by members of the feature writing class, showed that out of 361 students questioned, 328, or more than six out of every seven students, favored the plan of selling activity books.

Confronted by the question, "Do you favor compulsory purchase of activity books at reduced prices, or voluntary purchase of single admission tickets at regular prices?" only 33 of the 361 interviewees, modestly replied, "Single admissions."

**SENIORS FAVOR PLAN**  
Class of '40 best saw the advantages in activity books when they voted 88 to seven in that favor, while 1939 graduates favored activity books over the plan 76 times, while voting 16 to 16 on the question.

Sixteen sophomores thought they could fare better by having single admission tickets, but 99 other second-year students, who favored the books, looked over the opposition. Strongest in support of the activity plan came 21 juniors, who were opposed by 74 activity tickets.

Although many of the events covered by an activity book are sports, college women were strongest in their support of the book plan, with more than 90 per cent of them voting for it. Men, however, were not far behind in their support of the plan with slightly over 83 per cent backing

## WOMEN OBJECT

Only 15 women interviewed objected to the activity book system, while 36 of the men also saw fault with it. One hundred and forty-five women, and 181 men supported the present system.

## Mason, Abbot Halls House 873 Men

**By BILL BAIRD**

With 873 men students now living in Mason and Abbot halls and 36 more quartered in temporary rooms awaiting vacancies in either hall, Michigan State College this year is launching the biggest men's dormitory program in its history.

Mason hall, used in 1938-39 for the first time, has 438 residents, while Abbot hall, just opened this year, accommodates 435. Rooms in the two dormitories were available Sunday morning, and by Monday night more than half of the residents, mostly freshmen and transfer students, had arrived. Upperclassmen returned to their rooms Wednesday and Thursday.

Intentional in site, construction and appearance, Mason and Abbot halls offer similar facilities. Most rooms are equipped for two students, although a few single rooms are available in each hall. A large kitchen in the mid-section of the unit connects the two halls and serves the cafeteria in each hall.

Considered more as a single

## Coast to Coast

The Spartan gridders travel. This fall Coach Charley Bachman and his football squad will travel more than 10,000 miles.

November 11, the State players journey to Santa Clara, Cal. to meet the Broncos coached by "Back" Shaw. On November 4 they go to Syracuse, N. Y., playing the powerful Orange team coached by Ossie Slem.

Advertisers make this newspaper possible. They will appreciate your patronage—adv.

## 3 Solicitors Pay Fines

George Ferris, W. W. Gramm, and Howard Johnson, of Chicago, were arrested Wednesday upon complaint of the Dean of Women's office for attempting to sell magazines without a license in the vicinity of Mary May, Sarah Landon Williams, and Louise H. Campbell Halls, according to Chief of Police Harold Haun.

Arraigned, the three men pleaded guilty and paid fines of eight dollars and costs of three dollars each. The offense was in violation of the State Board of Agriculture Ordinance of March 8, 1935, forbidding canvassing or selling of magazines on the M. S. C. campus without a written permit from the secretary of the college, according to Haun.

## Buy A Wolverine Will Be Heard Again Today

Amid smiles of the hundred most beautiful girls on the campus and a 20-minute parade, the Wolverine sales campaign will open this morning. This drive will continue Saturday noon when the co-eds will lay the card tables aside for the last time and quietly turn in their results at the Wolverine office in the basement of the Union.


The college yearbook staff is boasting that next year's book will outshine even the 1939 publication.

Biggest of changes from the student's standpoint is the contracting of a new photographer, Crane Studios, a Detroit firm. The new arrangement is much easier as he need make only two trips to the studio. As before, the student will receive an appointment card from the Wolverine. He will pose for his photograph at no cost to

## Drama Group Plans Meets

Drama club of Peoples church has scheduled a number of productions, social meetings, and social "get togethers" for fall and winter terms.

The society invites all students and East Lansing residents who are interested in dramatics and the stage, to register for tryouts at the office of the church. Those desiring to belong to such a group as associate members are asked to register. Additional directing material is also needed, officials say.



**CLASS of '43 WELCOME!**

College isn't so far from home as it seems the first day. You'll be getting a lot of advice on what to do and what not to do. When it comes to shirts, ties, shorts, handkerchiefs and collars... you'll do well to heed advice about buying Arrow. Two out of three college men wear Arrow shirts. They're tops on every campus because they fit better, wear longer and look smarter.

See the local dealer today and stock up for the semester.

**ARROW SHIRTS**  
COLLARS... TIES... HANDKERCHIEFS... UNDERWEAR

**Fresh Can Join Paper**  
Any freshman who is interested in getting started in journalism is invited to contact the Editor, News-Tribune, 1000 Michigan State College, East Lansing, Mich. Here you will find a complete description of the paper and the conditions of membership.

**STATE**

**WELCOME BACK!**  
SOPHOMORES!  
JUNIORS!  
SENIORS!  
and to you FRESHMEN!

A Mighty Welcome! Will You Enjoy the coming season? Will You Enjoy the coming season? Will You Enjoy the coming season?

**THE MANAGEMENT**  
C. STARBUCK TODAY

**UNIVERSITY OF MICHIGAN**  
GENUINE

its hideous howl a dirge of death to all who hear!



The adventures of Sherlock Holmes on the moor!

**SIR ARTHUR CONAN DOYLE'S THE HOUND IN THE BASKERVILLES**

RICHARD... BASIL... WENDY  
**GREENE - RATHGONE - BARRIE**  
and **NIGEL BRUCE - LIONEL ATWILL**  
in the original

**JOHN LARGIERIE - BIRBY TOMPA - BETTIE MERIA - ROSEMARY CLARK - CLYDE EDGELL**  
and a cast of 100

**STARTING SUNDAY**  
LANE SISTERS - JOHN GARFIELD  
**Daughters Courageous**



**\$3.95**

**MILITARY SHOES**

Fine brown calfskin uppers, long wearing Goodyear welt soles. These Oxfords are made over the famous "York last" which fills all military requirements.

Width A to E  
Sizes 6 to 12

**Merritt & Bailey**  
112 1/2 North Washington Ave.  
Upstairs - Lansing

# HOW GOOD IS THE Michigan State TEAM THIS YEAR?

**A Football Expert Tells You in This Week's Post**




● What players from here will make headlines this season? Which opponents will be most dangerous? Francis Wallace has just completed a swing around the country, chinning with coaches, getting the inside, and now brings you the names to watch. What new tricks will add more touchdowns per game, and what players in colleges coast-to-coast have All-American chances? Turn to this week's Post for a fact-cramped article that predicts this year's winning teams. Wallace has been right two years in a row. Will he be right again?

**Pigskin Preview of 1939**  
by **FRANCIS WALLACE**

**LOOK FIRST AT HURD'S**  
ACROSS THE STREET FROM THE UNION

**FASHION**  
**SENSORS**  
**DRUM**  
**"MOVIE TOWN"**



**Varsity-Town's**  
HOLLYWOOD DRAPE

**\$30.00**      **\$35.00**

**HURD'S**  
LANSING AND EAST LANSING  
YOU WANT LITTLE SATISFACTION

**ALSO in this week's Post**

**FUNNY MAN BENCHLEY**  
Laughs from the life of a humorist  
by **J. BRYAN, III**

**VARIATION ON A THEME**  
A modern love story  
by **PAUL GALLICO**

**HENRY AND THE GOLDEN MINE**  
An imaginative fantasy  
by **STEPHEN VINCENT BENET**

**SWING YOUR PARTNER, HECTOR!**  
Puzzling murder in a rural setting  
by **SIGMAN BYRD**

**ONE TO MAKE A BARGAIN**  
What's the real trouble with NLRB?  
by **GARET GARRETT**

**THE BIG ONES GET AWAY**  
Short story of big-game fishing  
by **PHILIP WYLIE**

**THE YANKS ARE COMING—BACK**  
How New England is making money again  
by **STEWART H. HOLBROOK**

AND... serials by **DEX STOUT** and **McKENLAY HANTON**, editorials, poems, cartoons, humor, 104 pages of entertainment for your nickel. Out today.

**THE SATURDAY EVENING POST**