

FRESHMAN WELCOMING EDITION

Michigan State News

Editorials
You'll Be on Your Own

Weather
If You Don't Like Our Weather
Just Wait Five Minutes

Volume 31 MICHIGAN STATE COLLEGE, EAST LANSING, MICHIGAN, SATURDAY, AUGUST 26, 1939 No. 96

Campus Pick-Ups

Rise and Fall
Announcement of price change in football tickets was made late this summer by L. L. Frimodig, assistant athletic director. The admission price for the Wayne and Illinois Wesleyan games has been reduced to \$1.00, while the price of the remaining home games (Marquette, Indiana and Temple) has been boosted to \$2.25, a raise of five cents per game.

The shift in prices was made to facilitate handling of change caused by the ten cent tax assessment. By this change in prices the costs of all the home games are balanced and at the same time the possibility of crowds becoming jammed at the entrances will be avoided, affirms Frimodig.

Royalty Dines
Can you remember your first Thanksgiving dinner? Well, if you can't, Singkata Toneyan can "sing" as he is called by his friends, had his first Thanksgiving dinner last fall here at Michigan State. He is a member of the Siamese royal family and is studying Police Administration. His home is in far off Bangkok, Siam, where his father is a prince.

For Men Only
Men, get your rooms early! That is the advice of G. R. Heath, Michigan State housing director. It is far safer to select your room the early part of September than to search endlessly for a room fresh-man week. Under Heath's direction, the college approves homes where students may stay. A list of approved rooms may be secured from the Dean of Men's office. Of course if you have your room in Mason hall, Abbott hall, or Wells hall, your worries are over.

For All Religions
Four denominations in one. That is the People's church. Located in East Lansing, it is inter-denominational, including Baptists, Congregationalists, Methodists, and Presbyterians. Many of the students attend the Peoples church regularly.

Of course if you are a member of another denomination, your church will be located in Lansing and can be reached by bus.

Warning!
Michigan State is noted as the center of any college in the country.

But there comes a warning from members of the vigilante committee that friendliness will be easily won for those who break the campus traditions of "no smoking on campus" and "no walking on grass."

We pass it along for what it's worth.

Newcomers Face Busy 'Freshman Week'

From the President

It is highly desirable for the high school graduate to give serious thought to the possibilities of continuing studies in higher education. It is a sound policy that everyone who has the ability to do the work in college or university and who is eager to make the most of the opportunity should have a chance to go to college regardless of wealth or social position.

The objectives of the Michigan State College are such as to result in an endeavor to prepare young men and young women to be of real service to their fellow men in life's activities after graduation.

This institution offers many technical courses that are not ordinarily found in colleges and universities other than those of the land-grant type. Agriculture includes forestry, horticulture, and landscape architecture as well as a general course; engineering offers special training in mechanical, electrical, chemical and civil engineering lines; training in medical biology and veterinary medicine are featured in the veterinary division. Home economics includes special features relating to home making, foods, clothing, et cetera. The division of applied science presents a general course and special courses in physical education for men and for women also. The division of liberal arts includes those features ordinarily found in a liberal arts college with special stress on music, art, dramatics, literature, public speaking, et cetera.

Michigan State College has been expanding very rapidly, having doubled the enrollment in the last five years; but along with this the building equipment has kept pace so that there are adequate classrooms and laboratories available with comfortable, suitable dormitories and private homes to make comfortable living possible at a very moderate cost. The student body excels in the matter of self government, and a friendly spirit prevails throughout.

College graduation does not guarantee a job or success or social position. One gets out of it only in proportion to what he puts into it, but high standards of conduct and achievement in college do help to open opportunities after graduation. A hearty welcome awaits you all.

President Starting Twelfth Year



PRES. ROBERT S. SHAW

'Big Sisters' Give Advice To Coeds

By ROBERTA APPELGATE
Freshmen girls aren't left to their own devices to get acquainted with the campus and their classmates during their first few weeks at Michigan State college. All new women students have "big sisters" with similar interests to help them over the rough spots.

Nearly 300 upperclass girls have been selected to serve as big sisters and who will give advice when it is needed and help the new girls feel a part of the school.

Jean Coe, former home economics student from Mason 4, chairman of the freshmen committee, says the "big sisters" plan is formerly called "Eleanor Kinnery applied science juniors from Lansing, Mich., assistant."

Members of the council have urged both big and little sisters to get acquainted with each other through correspondence before school begins. Problems on what to wear, where to go, what courses to take, and how things are done at state are the ones most frequently discussed.

After school opens, the older girls will attempt to make connections with the freshmen. Tower Quayle, former women's home guard, organized the plan several years ago.

In addition to the freshman councilors system, there is an Urgency Correspondence

Admittance Increase Expected

Figures to Date Top Last Year's Advance Records
Continuing the great rise that has marked Michigan State's enrollment in the last eight years, latest figures available show a steady increase over 1938 in admittances for the coming term.

Freshman enrollment seems certain to surpass last year's record of 2149 new students. Advance applications accepted so far this month are several hundred more than had been accepted in 1939 at this same date according to figures released by R. S. Linton, college registrar.

For the last eight years, each freshman class has established a new enrollment record only to see it erased the next fall.

College officials are optimistic that this year's class will exceed last fall's figures, but hasten to point out that the volume of early applications may be only a result of requests made by the college for students to make applications early.

According to figures in the registrar's office, the total enrollment has jumped from 3,602 for the year 1929-30 to 6,190 for 1938-39. Greatest increase in a single division has been in Liberal Arts. Since its inception in 1924 Liberal Arts has climbed up the largest enrollment of all the divisions. Last year 1961 students were enrolled in Liberal Arts, figures show.

Enrollment in the other divisions last year, excluding summer school, was as follows: Agriculture and Forestry 823; Applied Science 981; Engineering 216; Home Economics 868; Veterinary Medicine and Medical Biology 377; Graduate 336.

Division Conferences Will be Starting Post For Class of 1943

Guest Editorial

A Student Welcome

It is indeed a pleasure to extend to you, as new Spartans, the greetings of the upperclassmen of Michigan State college.

The wisdom or folly of what the next four years holds for you is largely dependent upon the manner in which you initiate your college program.

This, in turn, depends to a great extent upon how speedily you are able to adapt yourself to this atmosphere which you will find somewhat new and alien.

To the end that you may easily orient yourselves to Michigan State, we welcome you to accept the benefits of our comparative familiarity.

Ask us questions; perhaps we'll not be able to answer them but we'll do our best; besides we'll get acquainted. Go out of your way to meet people and make new friends. Count that day a failure when you don't meet ten new people during your first month here at State. They'll add countless pleasures to your experiences here.

We take pride in the traditions of our school and we welcome you to respect them.

Do not overlook the importance of real study. Extra-curricular and social activities are a necessity to a well filled, educated student, yet we'd most certainly fall short of the objective which we seek if we minimize the importance of our class-room work.

Such thought is summed up in the inscription on Beaman Tower, the symbol of MSC, which you'll find in the center of the campus. It says: "Whatsoever a man soweth, that shall he reap."

Last year the student body approved a substantial change in the organization of the Student Council, student self governing body. We invite you to participate in student elections and to manifest an interest in the affairs of the Student Council.

Sincerely yours,
DEK SAHSTOLL
President, Student Council

-Spartan Success Story-

It's a far cry from "working your way through college" to the presidency of Lord and Thomas, one of the largest advertising agencies in the world.

But that's the jump that former Spartan Don Francisco has made since he graduated from MSC in 1931.

Although Francisco had a banking job to be a cub reporter when he left school he decided to follow the advice of an apologetically content phrenologist who insisted that farmers co-operative work was Don's niche.

Result of the decision was that Don went west and put the California orange growers on the map by teaching America to drink orange juice.

His recent appointment as head man of Lord and Thomas puts Don pretty near the top rung on the ladder to fame.

He walked these pathways before you.

Varied Program Planned For New Spartans

Tuesday, September 19, is the day!

On that day the class of '43 will invade Michigan State's campus for their first taste of college life.

New and transfer students will officially open Freshman Week at 1 p. m., when they gather in designated spots all over campus for "divisional convocations."

Groups representing each of the college's six divisions, Agriculture, Engineering, Liberal Arts, Applied Science, Home Economics, and Veterinary and Medical Biology, will meet en masse to be substituted for the remainder of the week.

Will Meet Advisers
Freshman students will spend the remainder of the day meeting individual advisers and writing English tests. These tests, required by the college, determine if students require further preparation to meet college English requirements.

Divisional conferences, dean's hours, campus trips, and the completion of psychological, reading, and speech tests will occupy beginning student throughout the week.

Classification and registration, and fee payments are scheduled for Wednesday and Thursday. After determining class schedules in individual conferences with their advisers, freshmen and transfer students will register for class work in the gymnasium, on these days fees will be paid at the Administration building.

President Talks Friday
President Robert S. Shaw will meet new students at 4 p. m. Friday during the annual president's convocation. Head of various college departments, and student leaders in extracurricular activities will be introduced to new students at this time.

Medical examinations for both freshmen men and women students, including identification photographs, and for men students, radio are required to take two years of basic military training during the acquiring of uniforms will wind up the business end of the week.

'Service' is the Byword Of MSC Student Union

Variety has been said to be the essence of a liberal education.

If this be true one might almost achieve a liberal education within the confines of the Michigan State Union building. For Michigan State's Union, operated for the students and to a large extent by them, is the college's latest growing tradition. It'll meet you in the Ymca or become the big word of the anti-Spartan!

Some 10,000 students in the State of Michigan are the keynote of membership in the Ymca. The organization has as its aim the propagation of Christian ideals in personal and social life.

See—YMCA—Page 2

Specializing opportunity is offered in the Division of Home Economics, headed by Dean Marie Dye. Twelve outstanding women students are chosen each year to study one term at Merrill-Palmer school, Detroit.

Dean Marie Dye has directed the division since 1929, joining the M.S.C. faculty in 1922.

See—UNION—Page 2

Spartan 'Y' Offers Membership To All State Men

Members of the council have urged both big and little sisters to get acquainted with each other through correspondence before school begins. Problems on what to wear, where to go, what courses to take, and how things are done at state are the ones most frequently discussed.

After school opens, the older girls will attempt to make connections with the freshmen. Tower Quayle, former women's home guard, organized the plan several years ago.

In addition to the freshman councilors system, there is an Urgency Correspondence

YW Offers Coed Varied Programs Of Activities

Why join the "Y" if a question many freshman women ask themselves during their first few months at Michigan State? Although it is true that many of Y's have been members before coming to State many others have little more than heard of the group.

Here at Michigan State college the YWCA plays a prominent part in the extra-curriculum of a large number of girls.

See—YWCA—Page 7

Varied Educational Interests Handled Through Divisions

<p>DEAN E. L. ANTHONY Students in the Division of Agriculture, which offers courses in various phases of agriculture, horticulture, and forestry, will have E. L. Anthony as their dean. Dean Anthony, graduate of the University of Missouri, received his M.S. degree from Pennsylvania State college. He came to M.S.C. as professor of dairying.</p>	<p>DEAN R. C. HUSTON Physical education for men and women and police administration courses are incorporated with the sciences under the Applied Science division, of which R. C. Huston is dean. Dean Huston, head of the division since 1930, holds the M.S. and Ph.D. degrees from the University of Iowa.</p>	<p>DEAN MARIE DYE Specializing opportunity is offered in the Division of Home Economics, headed by Dean Marie Dye. Twelve outstanding women students are chosen each year to study one term at Merrill-Palmer school, Detroit. Dean Marie Dye has directed the division since 1929, joining the M.S.C. faculty in 1922.</p>	<p>DEAN FRED T. MITCHELL When troubles beset Spartan men it's Dean Fred T. Mitchell who lends a kindly ear. Active Dean of Men since 1935, Mitchell came to the campus as a professor of education in 1931. He took his B.S. degree at Mississippi State, his Master's at Peabody, and his Ph.D. from Cornell.</p>	<p>DEAN ELISABETH CONRAD Dean of Spartan women since her arrival on the campus in 1928, Miss Elisabeth Conrad fills a big job capably. A Wisconsin graduate, she received her Master's and her Ph.D. from the same school. Miss Conrad also finds time to teach a good bit of French on the side.</p>	<p>DEAN H. B. DIRKS Heading the Division of Engineering which trains students in its chemical, civil, electrical, and mechanical aspects, is H. B. Dirks. Dean Dirks holds the B.S. and M.E. degrees from the University of Illinois. He came to Michigan State college in 1929, after teaching at Princeton and Illinois universities.</p>	<p>DEAN L. C. EMMONS Combining work from other departments with that of cultural courses so students may take work leading to the liberal arts degree is the aim of the Liberal Arts division. Dean of the Division, L. C. Emmons, received his A.B. from Indiana university and his M.A. from Harvard university.</p>	<p>DEAN WARD GILTNER The Division of Veterinary Science offers two courses; one leading to the degree of Doctor of Veterinary Medicine, and the other leading to Bachelor of Science degree in Medical Biology. Dean of the division is Ward Giltner, who has served in this capacity since 1923.</p>
---	--	--	---	--	--	---	--

Michigan State News

Entered as second-class matter at post-office, East Lansing, Mich. Office located at ground floor of east wing of Union Building, Room 2.
 Published Tuesday, Thursday and Saturday mornings during college year by the staff of Michigan State College. Price: 25¢ per copy.
 Telephone: College Phone 4-9111. Editorial—Ext. 374. Business—Ext. 373.
 1939 Member 1939
 Associated Collegiate Press National Advertising Service, Inc.
 Distributor of Collegiate Digest
 420 Madison Ave., New York, N. Y.
 Chicago, Boston, Philadelphia, San Francisco

In Charge of this Issue—Vic Spaniole

You'll be on Your Own

And now college! We suspect that already you are surfeited with well-meant advice regarding your college career. It is an aggravating habit possessed by our well-meaning elders to set up a list of "dos" and "don'ts" for us to follow whenever we decide on what is to be an important step in our lives.

So maybe you'll pardon us if we forget our position as a high and mighty senior and just talk shop for a while.

There are a lot of things you'll like about Michigan State. It's a new world that you'll be stepping into and a world that will be entirely different to most of you.

Maybe the best thing about this new world is the independence it offers. For the first time in your life, perhaps, you'll be on your own.

Of course you won't be thrust into an irreconcilable world and told to do or die. It's nothing like that. But nevertheless you'll have to make your own decisions on any number of things that will have a very important bearing on the possibility of college being a stepping stone to success or failure for you.

Those decisions are likely the most precious prerogative that college life has to offer. The decisions in themselves are not the important thing. The fact that you make them yours is.

Maybe you're the gay butterfly type and will decide to make the gaily whirl of society your prime motif in college life. Perhaps drawn as well as brain takes your eye and you'll go for the Spartan "muscle" men. And then again you may decide on the life of a student and make the quiet recesses of the library your college headquarters.

We could take advantage of this opportunity to offer you reams of advice regarding these decisions but we are not going to. You'll be best with advice galore after you get here.

Your first decision will be to quit that advice throwing out the ball and keeping the game.

So we'll just say "the best of luck and may you call every decision right"—D. H. T.

YMCA UNION

(Continued from page 1)
 A number of... (text continues with details about YMCA activities and union news, including mentions of social events, sports, and organizational updates.)

\$5,000,000 Building Program Nears Completion

By JACK SINCLAIR

As girders rise on a new million dollar auditorium and as workmen put finishing touches on two dormitories, Michigan State college sees the greatest period of expansion in its history near completion.

In the form of a construction program costing over five million dollars, this expansion has placed nine new buildings on the MSC campus. On only two of the new buildings, the addition of the men's gymnasium and field house, is the major share of work yet to be done. Both will cost \$1,000,000 when completed.

Three of the nine buildings are of major interest to freshmen than others, for they are the three dormitories in which approximately 1,000 freshmen will be housed.

Steven J. Mason men's dormitory was completed last year at a cost of \$800,000. Although it is still being built, this year at a cost of \$500,000, it will house about 450 men.

Campbell is Third Women's Dormitory. A new women's dormitory will be built on Scribner. Louise Campbell Hall is the third dormitory in a women's housing program and will accommodate 1,000 women.

At the end of the program, a new building will be ready for the opening of the next college year.

Michigan State will be using the new buildings.

An auditorium seating 1,500 persons and containing offices, music department, and other facilities, WKAR station, estimated to cost \$1,200,000.

The East Lansing campus will have a new and more prominent place in the state.

The new buildings will be ready for the opening of the next college year.

The new buildings will be ready for the opening of the next college year.

The new buildings will be ready for the opening of the next college year.

The new buildings will be ready for the opening of the next college year.

The new buildings will be ready for the opening of the next college year.

The new buildings will be ready for the opening of the next college year.

The new buildings will be ready for the opening of the next college year.

The new buildings will be ready for the opening of the next college year.

The new buildings will be ready for the opening of the next college year.

The new buildings will be ready for the opening of the next college year.

The new buildings will be ready for the opening of the next college year.

The new buildings will be ready for the opening of the next college year.

The new buildings will be ready for the opening of the next college year.

The new buildings will be ready for the opening of the next college year.

The new buildings will be ready for the opening of the next college year.

The new buildings will be ready for the opening of the next college year.

College Radio To be Second In Power

Station Connects School, Students With Parents

What is to be Michigan's second most powerful station is located at Michigan State college and broadcasts no advertising or commercial programs. It is WKAR, known as Michigan's educational station.

Operating during daytime hours on a frequency of 830 kilocycles, this station has been using 1,000 watts power. During the past year it has received federal authorization to increase power to 5,000 watts. This will enable WKAR to reach approximately 76% of the entire population of Michigan.

R. J. Coleman is director of the station. WKAR provides a direct connection between the college and the community.

See—WKAR—Page 7



The Pig'n Whistle

GIFT AND HOUSEWARES SHOP

The largest and most complete stock of Gifts, for every occasion, in Central Michigan

WE ARE headquarters for the original Bertha Hummel figures. Art novelties from all over the world — Practical gifts combining beauty of finish with genuine usefulness.

STRATEGICALLY located on beautiful West Michigan Boulevard—grand parking facilities—people to attend you who are well paid—interested in their work and who join us in extending an invitation to "Come to Michigan State" this fall term.

AND on week-end trips home to see Mother and Dad—take along a little gift—they'll love it if it comes

From



The Pig'n Whistle

110 West Michigan Avenue

Phone 5-8918

East Lansing, Michigan



PATRONIZE NEWS ADVERTIZERS

MAKE THE REX CAMERA SHOP

Your Headquarters for
 KODAK FINISHING, STATIONERY AND CARDS

Next Door to Bank East Lansing, Michigan

FOR GOOD FOOD and the BEST ICE CREAM

Priced for Student Purposes

Come to

Matthews Dairy

You'll Do Better at Matthews ALL-WAYS

Shop With Your Roommate At-

Sears

FOR ROOM FURNISHINGS AT SAVINGS

- CARD TABLES
- THROW RUGS
- STUDENT LAMPS
- STUDY DESKS
- DRAPERY MATERIAL
- CURTAINS
- BEDSPREADS - BLANKETS
- SHEETS - PILLOWCASES
- Canvas Laundry Mailing Bags

SEARS, ROEBUCK AND CO.

SAVE MORE ON 10,000 ITEMS IN SEARS' TAKE OR LEASE PLAN. SEE US FOR FULL DETAILS.

300-312 EAST MICHIGAN AVENUE, LANSING, MICH.

Welcome Freshmen

Flowers in pleasing arrangements

Gene Averill Florist
 211 Abbott Rd.
 EAST LANSING

Sandy's Grill

If it is good food you crave you can find it here. Prepared with consideration and utmost care.

Russell Carr, Manager.

The Only Church in East Lansing
PEOPLES CHURCH
 INTERDENOMINATIONAL
WELCOMES ALL M. S. C. STUDENTS
 DR. N. A. McCUNE, Minister
 Worship 9:30 and 11:00 A. M. Sunday
 Open for Students Seven Days a Week

Wolverine to Offer Over 400 Pages Of Campus Life

"Four out of every five girls are pretty, and the other one goes to the University of Michigan."

As a freshman at Michigan State, you will probably hear that historic quip early in your college career. And still earlier in that career you will meet a

good many of those "four out of five." They'll stop you on the campus during your registration, greet you with a friendly smile, and tell you about the 1940 Wolverine.

The Wolverine is the record and picture history of your life at Michigan State. Publishing this 400-page book is one of the major extra-curricular activities of State students.

From Small Beginnings

The book says that long, long ago, in its early years Michigan State was M.A.C. Then, and a hundred pages or so were sufficient to picture the faculty, officers, the comparatively few buildings that were the college, and the amateur portraits of the literary societies.

Year by year it has grown, how-

ever, and now about 100 students spend many enjoyable hours during the year in preparing the yearbook.

Fifty of this large staff are assigned to the most important positions in the Wolverine. They are: Editor-in-Chief, Editor, Business Manager, and the staff of writers, photographers, and artists.

Activity in the Wolverine office increases as the college year advances. Photographers are busy everywhere about the campus, advertising and book salesmen leave their activities, and staff members write stories, paste captions on layouts, and write captions and identifications for photographs.

Freshman Week Social Calendar

TUESDAY, SEPTEMBER 19
 Freshmen Women Counsellor's Meeting—5 to 5:30 p. m.—Lecture Room—Horticulture Building.
 H. Y. Supper—5:30 p. m.—Sunset Room—Union—(Sponsored by YMCA).
 "Extra-Curricular Activities Night"—For Men—7:30 p. m.—Social Hall—Peoples Church—(Sponsored by the YMCA).
 College Reception for Women—7:30 to 8:30 p. m.—Williams Hall.
 Freshmen Women's Counsellor Hour—9 to 10 p. m.—(Counsellors will call on women assigned to them and women are asked to remain in their rooms during the period of these interviews).
WEDNESDAY, SEPTEMBER 20
 Informal Coffee for Freshmen Women—7:30 to 9 p. m.—Peoples Church—(Sponsored by the YWCA).
 Men's Mixer—8 p. m.—Social Hall—Peoples Church—(Sponsored by the YMCA).
THURSDAY, SEPTEMBER 21
 Student Mixer—8 to 10—Peoples Church—(Under the auspices of the YM and the YW).
FRIDAY, SEPTEMBER 22
 Grand Opening Party—8 p. m.—Student Club—Peoples Church.
 Michigan State Interfraternity Council Smoker for all men students who are newsmen and are interested in fraternities—8 p. m.—Union Ballroom.
 House Entertainment for Freshmen Women—9 to 10 p. m.
 Student Grange Get-Together—8 p. m.—Little Theater—Home Economic Building—(All Ag and Home Ec Freshmen and others interested in 4-H Club work are invited).
SATURDAY, SEPTEMBER 23
 Open Sports Tea at six of the houses—2:30 to 5:30 p. m.
 Tower Guard Tea for all new women students who are regular residents of Lansing and East Lansing—3:30 to 5 p. m.—Mary Mayo.

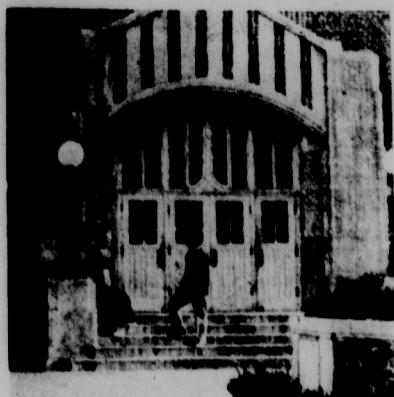
Campus Personalities

"That's **LYLE ROCKENBACK** over there, the short stocky one, talking with **DON ANDERSON**, president of Student Council. He is talking with **WILLIE SCALES**, another East Lansing boy, and the new president of the Senior class, **JERRY DRAKE**, last year's Blue Key president. **CASEY KLEWICK**, **GEORGE GARGETT**, and **RON ALLING**, who is being mentored as All-American timber."

MARIAS PATCH, another East Lansing product, was elected president of Associated Women Students, and you coeds will look to her for judgment on your late minutes. The girl she's talking with is **MARLYN BARTON**, president of the Spartan Women's League.

"Let's go down to the publication's offices and have a look at some of these guys and gals. Down in the Wolverine office, Editor **ELMER WHITE** is discussing organization with **BILL KNOWN**, business manager, and **VIC SPANIOLO**, graduate manager under the new organization, are talking over how they can save expenses, while **DORIS SCHODDEL**, business manager of the yearbook, is busy engaged in discussing editorial policies with associates **JACK SINCLAIR**, **LEN**

"Next door in the State News office **BILL COLLINGE**, business manager, and **WALT RUMMEL**, editor, is discussing editorial policies with associates **JACK SINCLAIR**, **LEN**



View Showing Entrance of Union Building, the Center of all Campus Social Activities

DIRECTLY ACROSS THE STREET IS
AVRD'S
 LANSING AND EAST LANSING
 YOU CAN'T LEAVE DISSATISFIED

FOR 25 YEARS THE CLOTHING CENTER FOR MICHIGAN STATE MEN.



Here Are a Few Popular Items State Students Have Found at Our Store

MACGREGOR FISHTAIL SWEATERS In the Colors Popular at State \$3.50	INTERWOVEN CREW SOCKS In Colorful Plaids and Stripes 35c—4 for \$1.00
ARROW SHIRTS In All the Collar Styles Favored at State \$2.00—\$2.25—\$2.50	VARSITY TOWN SUITS Favorites Everywhere Among College Men \$25.00—\$35.00

FREE

A Handy Laundry Bag

Will be given to you free during Freshman Week. Stop in and ask for one. You'll not be asked to buy anything. We'll be satisfied with the knowledge that we've made your acquaintance.

AVRD'S
 LANSING AND EAST LANSING
 YOU CAN'T LEAVE DISSATISFIED

PATRONIZE NEWS ADVERTIZERS



ELMER E. WHITE

Editor-in-Chief of the Wolverine.

Elmer E. White is a member of the staff of the Wolverine. He is in charge of the editorial department.

Elmer E. White is a member of the staff of the Wolverine. He is in charge of the editorial department.

Elmer E. White is a member of the staff of the Wolverine. He is in charge of the editorial department.

Elmer E. White is a member of the staff of the Wolverine. He is in charge of the editorial department.

Elmer E. White is a member of the staff of the Wolverine. He is in charge of the editorial department.

Elmer E. White is a member of the staff of the Wolverine. He is in charge of the editorial department.

Elmer E. White is a member of the staff of the Wolverine. He is in charge of the editorial department.

Elmer E. White is a member of the staff of the Wolverine. He is in charge of the editorial department.

Elmer E. White is a member of the staff of the Wolverine. He is in charge of the editorial department.

Elmer E. White is a member of the staff of the Wolverine. He is in charge of the editorial department.

Elmer E. White is a member of the staff of the Wolverine. He is in charge of the editorial department.

Elmer E. White is a member of the staff of the Wolverine. He is in charge of the editorial department.

Elmer E. White is a member of the staff of the Wolverine. He is in charge of the editorial department.

Elmer E. White is a member of the staff of the Wolverine. He is in charge of the editorial department.

Elmer E. White is a member of the staff of the Wolverine. He is in charge of the editorial department.

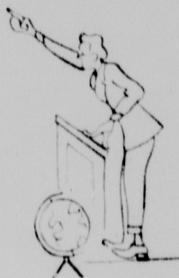
Elmer E. White is a member of the staff of the Wolverine. He is in charge of the editorial department.

Elmer E. White is a member of the staff of the Wolverine. He is in charge of the editorial department.

Elmer E. White is a member of the staff of the Wolverine. He is in charge of the editorial department.

Elmer E. White is a member of the staff of the Wolverine. He is in charge of the editorial department.

Everybody Has One!



I T S C O L L E G E L I F E

A Record of Years Activities From Freshman Week To Graduation Ceremonies.
 444 PAGES OF:

- Countless Candid Shots
- Individual Photographs
- Scenic Views
- Athletics
- Dances

PORTRAYED by Michigan State's Yearbook

GET YOURS EARLY!

Special Rates Freshmen Week
 NO CASH NECESSARY

1940 WOLVERINE

UNION ANNEX

OFFICIAL STUDENT PUBLICATION

'BIG SISTERS'

(Continued from page 1)
 "During the winter term a series of lectures on health and hygiene are given under the supervision of Dr. Linda Lightning, head of the women's physical education department.

The orientation system sponsors a "Dance Carnival" annually to include extra-curricular activities in new students. This year it will be held October 11 in Demonstration Hall. Among the organizations which will sponsor exhibits are the YWCA, SWL, WAA, State News, Spartan, Wolverine, and other groups.

Noted Personalities Booked for MSC Lecture, Music Series

You Will Hear Him Appearances Secured At Slight Cost To Students

First Lady to Talk Kreisler to Play



WILL DURANT

Noted as an author, lecturer and philosopher, Will Durant will appear on the Michigan State lecture series January 25.



MRS. FRANKLIN D. ROOSEVELT

The First Lady of the Land, Mrs. Franklin D. Roosevelt, will be among the group of notable speakers to appear on this year's college lecture series, according to Prof. C. P. Halligan, chairman of the course. She will speak here March 12, 1940.

Another well-known speaker who will appear is H. H. Knickerbocker, International News Service correspondent. He will speak on the subject of "The New World" on October 12.



FRITZ KREISLER
BY PETE GENTHER

After years of tireless and patient effort, Professor Lewis Richards, head of Michigan State's music department, is to see the full maturity of one of his favorite enterprises.

When Mr. Richards first appeared on the Michigan State campus some eleven years ago, charged with the task of organizing the college music department, it was in an all-but-unknown field. It was to be built from scratch, and the first step was to attract students to get the most out of courses in music. This could be done only by making the department a place where students would want to go, and this meant that the department must be able to give them the best of what the world has to offer in the way of music. This meant that the department must be able to give them the best of what the world has to offer in the way of music.

Greek Letter Groups Outline Plans For Frosh Rushing

Open Tea Set For New Coeds

On Lecture Course

Council Lays Pledge Laws

Michigan State's sororities will hold an open tea Saturday and Sunday, September 23 and 24. Pan-Hellenic council sponsors this annual affair. Any girl enrolled here may attend any or all of the teas from 2:30 to 5:30. Pan-Hellenic rules state that the week following the open tea, no women of any kind will be allowed. Sorority girls and non-sorority girls may not have any associations with each other during this period.

These teas are attended only by invitation, which according to Pan-Hellenic rules are issued through the Pan-Hellenic office. A buffet supper is scheduled for Thursday, September 28. Highlighting the week's activities will be a luncheon on Saturday, September 30, from 12 until 2 o'clock. This is the football game between Michigan and Western University.

Preference Dinner is Friday. Formal preference dinner will be held Friday, October 6, from 7 to 9 o'clock. The handbook states that the purpose of a preference party is to give the sorority a chance to get to know the girls. An acceptance means that the girl is accepted into the sorority. Following the preference party is a social period from 9 until 11 o'clock. This is the football game between Michigan and Western University.



H. H. KNICKERBOCKER

SWL Follows Interests Of Women

These are some of the activities of the Student Women's League (SWL) at Michigan State. The organization is interested in the welfare of women students. It has a program of extracurricular activities, and it is one of the largest campus organizations. Membership is open to all women, and the president women on the campus are the president women on the campus.

STATE BLANKETS
Dark Green With White Letters

FOR YOUR ROOM
and
FOOTBALL GAMES

— SEE —
Graham MacKichan
Sigma Nu House

College Drug Co.
111 East Grand River Ave. — 116 West Grand River Ave.
YOUR RETAIL STORES

PRESCRIPTIONS
SCHOOL SUPPLIES — LAMPS — TOILETRIES
BREAKFAST — LUNCHES — SUPPERS

F. T. TREADWELL
SHOES and REPAIRING
220 N. A. C. AVENUE — EAST LANSING

LACES — POLISHES — INSOLES — SHINES
WE DO CEMENT WORK
GUTH SOLES PUT ON
ALL WORK GUARANTEED

BE READY
FOR THE
KICK OFF

EAT

AT THE
GRIDIRON

Music Maker

ARTHUR SCHNABEL
A new face to most Spartan students, Mr. Schnabel will appear on the Michigan State concert series in conjunction with the college symphony orchestra during winter term.

Happy Landing, Freshmen!

THE OXFORD SHOP

Specializing in
DRESS ACCESSORIES
LINENS and
GIFTS
BIDS YOU WELCOME.
222 Abbott Road

To Give Joint Concert

ELIZABETH REHRBERG
EZRO PINZA
See CONCERT STORY on this page

BLUE SUNOCO MOTOR FUEL and SUNOCO OILS

Sunoco A to Z Lubrication

Batteries Recharging — Tire Repairing
Car Washing, Polishing and Waxing
Goodyear Tires — Willard Batteries

PLETZ & SON
Cor. Michigan Ave. & Harrison Rd. AAA Service Phone 1-1461

Lansing Colorplate Company
Manufacturers of Printing Plates
317 N. LARCH STREET
PHONE 27022

FRESHMEN!

During your college stay at Michigan State your headquarters for textbooks and supplies will be "The State College Book Store," a non-profit organization under the supervision of the college. All merchandise is furnished to you AT COST, which affords you a considerable saving throughout the school year. We also carry a complete line of

FOUNTAIN PENS — M.S.C. PILLOWS
STATIONERY — COLLEGE JEWELRY
M.S.C. PENNANTS — LEATHER GOODS

DON'T FORGET THE NAME
STATE COLLEGE BOOK STORE

Freshmen -

We join with many others in welcoming you to Michigan State College. May your four years here be years of inspiration.

The Campus Press, Inc.
GRAND RIVER at EVERGREEN

Printers to Michigan State News
Since 1920.

WELCOME
FRESHMEN
TO
MICHIGAN STATE COLLEGE

AND WHILE YOU ARE AT "STATE" MAKE OUR STORE YOUR HEADQUARTERS FOR INFORMATION AND CORRECT COLLEGE CLOTHING, FURNISHINGS AND SHOES. FOR 20 YEARS WE HAVE SERVED THE MEN OF "STATE" WITH PROPER APPAREL.

LEWIS INC.
113 S. WASHINGTON AVE.

FRESHMEN ONLY

FREE Bring us this Adv. and **FREE**
your Suit and we will Press it

You Will Like Our
NEW MODERN EQUIPMENT
That Gives You Better Cleaning and Faster Service
Good During Month of September

HICKS DRY CLEANER
ON GRAND RIVER AVENUE

Campus Personalities

(Continued from Page 3)

WESTRATH, and DAVE TEFY. ROBBIE APPLIGATE, women's editor talks over news matter with BRUCE MAIR, red-haired city editor, comes shuffling in, while REBECCA LORD, V.W. president.

"Here in the Spartan office we find NORWOOD HUBBEL is out-up in the Union Grill, looking for jokes. GEORGE COPE, business manager, says NORWOOD is editor of the magazine, and is found sipping a coke with BOB RIORDAN, editor of student directory.

Out on Grand River an occasional BMOG or BWOC comes along, but the majority of them are on campus. The college woods is full of them.

In the women's lounge ROSE-MARY LEE, head of the only student-conducted orientation system in any American college, tells her plans to JEAN COLLAR, mother of the little sisters.

SORORITY

(Continued from Page 4)

The dean of women's office emphasizes the fact that if a girl signs a preference slip and then decides not to join the organization, she may not pledge to another sorority for one year. The signing of the preference slip constitutes a promise to that sorority.

The following sororities have chapters on the Michigan State college campus: Alpha Chi Omega, Alpha Gamma Delta, Alpha Omicron Pi, Alpha Phi, Alpha Zeta, Delta Chi Omega, Kappa Alpha Theta, Kappa Delta, Kappa Kappa Gamma, Sigma Kappa and Zeta Tau Alpha.

Spartan Stylist Tells What Campus Men Will Don This Year

Gentlemen. As the saying goes—It's every man to his own taste.

But after being around the Spartan campus and watching a slew of freshmen classes come here sporting clothes that would do justice to a gang of lumberjacks or a half-dozen bull-fighters, we dunno.

Too often these freshmen must have been behind the door when taste was passed around, that is, if their clothes were any indication of the taste they possessed.

As honest-to-goodness, well-meant advice we would lay down a first major maxim. Buy good quality in what ever wearing apparel you may get. Quality is almost synonymous with lasting power—and that's what clothes absolutely have to have after they get to college.

Wait Before Buying

A second unmissable point is—do not buy all your clothes before you get here. Campus clothes are always about two jumps ahead of what's in style in the Valley or Valley Center. East Lansing and Lansing clothes cater to college men and at the same time are no higher than the Muskegon merchandise.

As for the clothes themselves. First, we have found that a fellow can get by nicely with two suits. Another one or two never hurt anyone though.

This year the east and west coast designers say suits will be of rough wool fabrics—tweeds, herringbone and plenty of stripes. In fact the fabrics will be of an almost homogenous appearance. Teal blue, a light combination of blue-green promises to be one of the smartest colors in suitings this year.

A brand new idea in suits will send your second-suit problem to your first one in the conservative line. A vestless ensemble of sport coat and matching slacks will be smarter than an all-A student this year.

A sweater sweater can be worn under the coat, replacing the vest. Such an ensemble is cheaper than a suit and can be made to do double duty if you get an extra pair of trousers for a continuation.

Forget the Houdoo Stuff

Please, fellows, please. Avoid suits that look like a measure of the uttering era. If in doubt, let your conservative nature come to the fore.

Next you will need a sweater, perhaps two. You have your choice of the pull-over button or zipper type. The pull-over type is a little more popular than the others at MSU. The only don't see don't get one of those low-slung, great one that is the height and the most unattractive. So it's better to get the best looking sweater you can get.

You will not need to have any kind of a jacket. If you don't own a winter jacket, get one. Sport coats, jackets, light weight jackets of various shades and colors are really the most attractive. If you're in the

heavy, again, as with the heavy sweater, their use is too limited. Corduroy jackets, though not the best-looking things, have found extensive favor. Local clothiers promise a better-looking, finger-tip length, corduroy jacket this year that will be just as tough as the old rubber-lined and blanket-lined style.

Shirt Borrowing is Taboo

You will need seven or eight shirts unless you plan to live in your roommate's. Shirt-borrowing roommates, however, become a nuisance. White shirts are nice but not always the most practical for school. Colored shirts always give a few extra miles to a washing.

A few white shirts are an excellent idea though, because there always are times when one has to dress up. Several novelty shirts in your wardrobe won't do any harm because they are extremely saving on the laundry bill. Novelty shirts or semi-sport shirts, come in light-weight flannel, rough wool, gabardine, and oxford cloth.

This year the emporiums of dress will show wool ties almost exclusively. Neckwear of light weight wool, new this year, will tie as neat a knot as a silk cravat. Too, if you must, the hand-tied bows are seen on campus. If you can't afford many ties, stick to the basic colors in conservative patterns. Blue matches with the greatest number of other colors.

Let Your Socks Show

Socks, too, are showing particular favor. It is in the article of dress that you can really let your self go. Socks on this campus are really not very far from the old-time sock of the past. Eight or ten socks will be about right.

As for a hat, don't wear one. The trend this year is to a slightly wider brim and bound edges, or wide brim edges. The new teal blue is bound to be popular and greens will hold strong.

And now shoes. You can get along with the old, but these are preferable. The pair of leather-soled shoes for dress wear is a must and for everyday campus wear nothing is better than the rubber-soled shoe.

The rope sole shoe is the best, with a rubber sole underneath. The rope sole shoe is the best, with a rubber sole underneath. The rope sole shoe is the best, with a rubber sole underneath.

The rope sole shoe is the best, with a rubber sole underneath. The rope sole shoe is the best, with a rubber sole underneath. The rope sole shoe is the best, with a rubber sole underneath.

Bring a Raincoat

These weeks have not written for a long time. Chapter of chapters, we would strongly advise a raincoat. The rain that may not get this summer will be here during other seasons.

Shirts and slacks. Five, six or seven sets.

Three sets of pajamas will see you through the year. A pajama pants and shirt set, which Mason Hall boys wear, is a good thing. Pajamas are more comfortable than you might expect. Be sure you get a good quality.

A bathroom or dressing gown. You may be called out in the night and a necessity. A silk gown is the most comfortable and a good one. Wool robes are cheaper, heavy and good-looking, as well as durable, and needless to say, the most numerous, too.

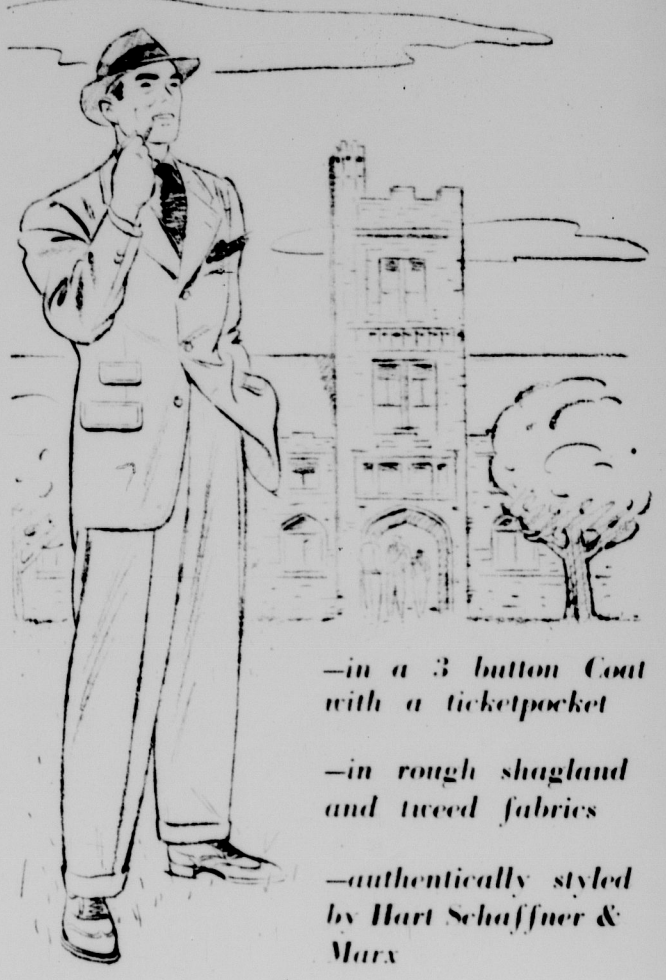
Remember These

After-a-cigarrette thoughts. Have plenty of handkerchiefs. Bring a pair of work pants—if you don't take to work there's still the Fresh-Sophomore bundle and other times when they come in handy. Oh yes, you freshmen are going to need a pair of brown shoes or oxfords for military. The ROTC needs must they be brown. If your everyday shoes are brown you can wear them. You might put together a first aid to clothes kit consisting of black and white thread, needles, add buttons and a pair of scissors.

If you are of a social turn, keep in the back of your mind that many winter term parties require tuxedos or tails. But by that time you should be ready to judge for yourself if you will buy, rent or borrow the formal regalia.

Now, Gentlemen of '43, you are ready to come to college properly clothed and shod.

THIS FALL Michigan State Men Are Going Back To School



—in a 3 button Coat with a ticketpocket
—in rough shagland and tweed fabrics
—authentically styled by Hart Schaffner & Marx

—from **Small's**

Lansing's newly enlarged and most modern store for young men.

As an outstanding Style Store, it's our job to know what the well dressed college man will wear when he goes back to school this fall. We've checked with every authentic style source . . . and particularly with Robert Surrey, ace Hart Schaffner & Marx stylist, who visits every important campus in the U. S. to find out what styles should be in every college man's wardrobe. We're ready to equip you with the authentic styles from America's best known makers.

Wait! . . . until you get here to buy your college wardrobe, if you live away from Lansing. Then you'll not be disappointed when you arrive by finding you bought the wrong kind of an outfit.

- Hart Schaffner & Marx Suits and Topcoats, \$29.50 and \$35
- "University Club" Two-trouser Suits and Zipper-lined Topcoats, \$25 and \$30
- "Collegaire" Sportcoat and Slack Matched ensembles . . . Coats \$12.50; Slacks \$6.50

Manhattan Shirts and Pajamas, \$2 and \$2.50; Dobbs' Hats, \$6

Small's

Strand Theatre Building

Freshmen! . . .

We can furnish all your study needs except the effort . . .

- Save nearly 10 per cent on your purchases by buying a coupon book.
- A big supply of used books at reduced prices.
- Candy, cigarettes and magazines.
- Full line of school supplies.

The UNION DESK

Union Memorial Building Part of YOUR Union

WE WELCOME YOU— CLASS of '43

May Your College Days Be Happy! A Traditional Good Wish From A Traditional Eating Place

HARBORNE'S

It's Across From The Union Building. Conveniently Located For Between Class 'Cokes' And For Regular Meals

Hospital Head



DR. C. F. HOLLAND

Succeeding Dr. R. M. Olin, who died last year, as health center chief, Dr. Holland is in charge of all the freshman examinations.

Loyalty oaths will be given at high school graduation. It goes on to say that it is high school to call it that in college.

ROOMS FOR MEN - Clean, comfortable furnished well heated. 418 N. A. C. avenue. Phone 2-6415 - 415.

CHURCH OF THE RESURRECTION

(ROMAN CATHOLIC)

Michigan Avenue at Rumsey, Lansing, Mich.

Hours of Masses 7, 8, 9, 10, 11 and 12:30

FREE BUS SERVICE FROM THE COLLEGE FOR 10 and 11 MASSES

Rev. JOHN A. GABRIELS, Pastor Phone 2-4719

ST. PAUL'S CHURCH

(OTTAWA AND SEYMOUR STREETS, LANSING)

SUNDAY'S 8:00 AND 9:30 A. M. HOLY COMMUNION 11:00 A. M. MORNING PRAYER THURSDAY'S 10:00 HOLY COMMUNION 11:00 A. M. MORNING PRAYER DAYS AS ANNOUNCED

A cordial welcome to all. The Rev. C. W. Brickman, Rector. The Rev. J. A. Scantlebury, Curate

AWS Welcomes You

Hello and welcome to Michigan State...

As future Michigan State coeds you are also future AWS members. AWS stands for Associated Women Students, the women's student council.

Our AWS organization is a part of the national association of women students which is found in all of the outstanding colleges and universities in the country.

The council of State is composed of eleven elected members who are elected at the district elections during the winter term.

We plan the orientation program, guide the activities of the women students, and formulate committee regulations.

During Freshman Week we hold a meeting of all freshman students and I will have an opportunity to explain our organization to you fully at that time.



MARIAN PATCH

Let me promise you that when you arrive in September you will be one of the most pleasant and enjoyable four years of your life.

MARIAN PATCH, President AWS

LECTURE

(Continued from page 4)

November 9, Charles Kettering, General Motors research engineer, will talk January 9.

Following the Kettering talk, Will Durant, author and philosopher, will lecture January 23. Channing Pollock, who is known as an author, dramatist and traveler, will appear on the same date.

John Mason Brown, dramatic critic of the New York Post, will speak on February 23, and Dr. Ruth Alexander, writer and editor, will be here December 2.

Director of the psychological service center of New York City, Henry C. Link, will speak October 12 to open the lecture series course.

Along with the lectures is a program to be presented by Doris Humphrey and Lincoln Wilson, contemporary experimenters of the modern dance, who will bring two of their companies to East Lansing, February 8.

NYA Offers Spartan is Campus Humor Magazine

Aid for Many Students

Stewart Meets 1600 Aspirants For 450 Jobs

By JACK SINCLAIR

Five years ago when the National Youth Administration first made funds available to MSC for student part-time work, Director Glen Stewart almost had to beg department heads to take student assistants.

Last year an average of 450 students were at work on 234 different projects. This coming year, with increased federal funds, there will be even more.

Wages Average \$15 Each fall, Stewart interviews more than 1,600 students seeking NYA work.

Wage rates for undergraduates are from \$10 to \$20 monthly with \$15 the average wage.

Federal funds for last year's NYA work at Michigan State were \$36,815. According to word from National headquarters, Stewart expects the college will receive \$72,000 for 1939-40.

The record system for handling NYA activities at Michigan State, which Stewart planned and organized, has received a praise from state NYA officials.

Applications which have been pouring in for the past month are now being checked, as Director Stewart prepares for the rush.

"Spartan" — three years young — now introduces himself for the fourth time.

A short span, but how "he" has grown in those three years! For "Spartan" is mascot to Michigan State's official humor magazine, published monthly by the student body.

The Spartan, its authentic title, is serio-comic in content, being made up of cartoons, humorous stories, photographs, and even a serious note now and then.

Tea issues hit the campus during the course of one year. The final edition is known as the official water carnival program, and in it "Spartan" outdoes himself in a flourishing finish of over 40 pages.

Financially the Spartan will be handled by George C. Cope of Dearborn, business manager.

Included on the Spartan staff are such notables as Oerie, the



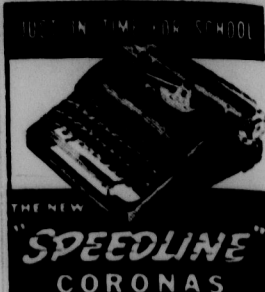
GEORGE COPE Business Manager

humorist with the loaded style and originator of the famous "England will fight down to the last American" quip. Oz Warbach, cartoonist, Reg Ketcham and Denny Mitchell, columnists, Jack Sinclair, public relations man, and many others.



NORWOOD HUBBELL Editor

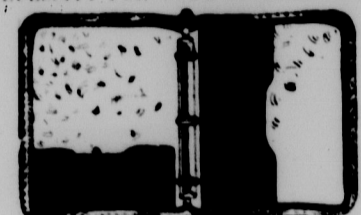
of room for freshmen on the magazine, claim editor Hubbell and business mogul Cope.



THE NEW SPEEDLINE CORONAS. The only portable with Floating Shutt. Three models - Silent - Sterling - Standard. Advanced design - speedier performance and many exclusive Corona features. AS LITTLE AS \$1.00 A WEEK. WOLVERINE TYPEWRITER CO. 228 S. Capitol Ave. Phone 2-1111 LANSING MICHIGAN

Students Zipper Notebooks

A NECESSITY FOR YOUR COLLEGE COURSES.



- SPLIT COWHIDE LEATHER WITH LINING. STANDARD SIZE 3 RING BINDER. DEPENDABLE ZIPPER FASTENER. HANDY LEATHER POCKETS ON INSIDE. NAME OR INITIALS IN GOLD FREE.

200

SAME QUALITY IN CONVENIENT 7x10 SIZE

1.50

STUDENTS' HEADQUARTERS FOR LUGGAGE LEATHER GOODS AND GIFTS

107 South Washington Avenue Liebermann LANSING Mich.

RADIOS \$4.95 up. Philco - Zenith - RCA You'll Need One VICTOR AND BLUEBIRD RECORDS EAST LANSING PHILCO SALES "We Service All Radios" FOUR DOORS WEST OF THE BANK

SPARTAN SPARTAN SPARTAN

The Fastest Growing Name On The Campus

- YOU can subscribe now! At a price within the reach of your pocketbook! 10 issues, including the 25-cent June Water Carnival program! It's yours for the year for the asking for only \$1.00! The SPARTAN, Michigan State College's official serio-comic magazine!

The SPARTAN Michigan State College East Lansing, Michigan

Dear Sparty: I understand that this coupon entitles me to a year's subscription to the SPARTAN for which I shall be billed \$1.00. Name Address

MICHIGAN STATE COLLEGE Of Agriculture and Applied Science

Michigan State College, a pioneer and leader in the field of scientific and cultural education, is an institution of which Michigan is justly proud.

Established in 1855, Michigan State College is the world's oldest college or university for the teaching of scientific agriculture; is the nation's oldest Land Grant college.

With an enrollment of nearly 6,000 students for each term of the regular school year, Michigan State College offers instruction in six divisions:

- AGRICULTURE HOME ECONOMICS APPLIED SCIENCE ENGINEERING VETERINARY SCIENCE LIBERAL ARTS

CALENDAR

1939 - 40 SCHOOL YEAR

FALL TERM

Thursday, Sept. 14 to Saturday, Sept. 16—Entrance Examinations.

Tuesday, Sept. 19 to Saturday, Sept. 23—Freshman Week.

Monday, Sept. 25—Classes begin at 8 a. m.

WINTER TERM

Tuesday, Jan. 2 and Wednesday, Jan. 3—Registration.

Thursday, Jan. 4—Classes begin.

SPRING TERM

Monday, March 25 and Tuesday, March 26—Registration.

Wednesday, March 27—Classes begin.

EXPERIMENTATION and RESEARCH

Investigation in—

- SOILS FARM MANAGEMENT ZOOLOGY POULTRY ANIMAL PATHOLOGY ECONOMICS FORESTRY ANIMAL HUSBANDRY CHEMISTRY FARM CROPS ENGINEERING ENTOMOLOGY HORTICULTURE BOTANY BACTERIOLOGY AGRICULTURAL ENGINEERING HOME ECONOMICS

EXTENSION:

County Agent and Extension Specialist Work in Agriculture. Home Demonstration Work in Home Economics. Boys' and Girls' 4-H Club Work.

(Bulletins are Published for Free Circulation)

SHORT COURSES

Two year courses in general Agriculture (six months, two years) and specialized courses in all phases of agricultural production.

Warm Weather Gives Coeds Chance to Wear Summer Togs

Handles Big Job



SEC. JOHN A. HANNAH
Hannah State Ag Board Secretary, has charge of the MSC building program.

SWL

(Continued from Page 4)

A small fee, Anna Marie Holmes is president. Among the interest groups sponsored by SWL, are social service, social dramatics, radio, art and publicity, and membership committees. For the past two years the organization has sponsored mixed dancing classes for beginners and advanced students.

SWL also publishes a booklet entitled, "We Like It Done This Way at Michigan State College." It is an etiquette book which tells what to wear, how, when and where to wear it, how to respond to invitations, how to make introductions properly, what to do at dances, and matters of common courtesy on campus.

School Fashions Need Not Exceed Budget If Bought Wisely

By VADA GRANGER '39

Editor's Note: Because this article received such favorable comment when it appeared in last week's Evening News edition, it has been reprinted this year with only changes to bring it in line with the new dress code.

So you're coming to Michigan State! Now that that's decided by your father, you and your mother are going to be wondering about and planning your wardrobe. Four years ago we were doing the same thing—the same wondering, we mean. As a mighty senior and, presumably, "one who knows," we'd like to suggest (hoping that it will help you solve some of those problems):

First, all new clothes are by no means necessary or essential. (Maybe, like me, your father is telling you it isn't even possible.) Clean, press and repair those things you got last fall or winter. And spring suits will undoubtedly be good the first few weeks, East Lansing weather being what it is. And it invariably turns hot the first few weeks when everyone wants to wear his or her new fall clothes. Bring, too, one of your dark summer dresses because you will want a change from that new wool suit. How many times have we wished we hadn't been so eager to pack away all our summer clothes!

And while you're looking over those skirts to be rejuvenated, remember to shorten them. Take a look at your legs—pencil—and unless they're terrible thin or shall we say plump—wear your skirts short, shorter maybe than you've been wearing them. Next, think of an old dress more than a long skirt or an old neckline. A three-piece suit with a fur have plain necklines in your wardrobe. For you wear lots of sweaters, because the third piece school hours and on dates. In fact, sweaters with dresses or other almost any time and anywhere. Still white collars and cuffs are a popular feature of good quality. Now, for your shoes. If you have a pair of shoes in your wardrobe, you'll want to get along with just one such dress for a while.

Then you'll want at least one wool dress for church, show dates and those first class sessions (to impress that future class president sitting in the second row). This dress might be a state-blue flannel buttoned down the front and with the shirtwaist top. Or it might be a piece of wire and powder blue or a grey wool with all around pleated skirt. Consider, too, a tucked Zephyr wool in woodland green. These may be had at from \$7.95 in the Good Housekeeping to \$14.95 in the better shops most anywhere.

For a "good" dress, we like princess-style, black velvet with white lace collar and cuffs. A plain toned silk crepe is a great favorite. Buy it in your most becoming color, or in black. Black or brown or a dark blue, not navy, are excellent buys if you want to get along with just one such dress for a while.

FORMAL WEAR

The good mood, appealing and which means sleeves and a back pocket, especially in formal. That will take you into the next year. The important thing is the color. Two weeks' formal wear will do you good. Formal wear in October and November is important because formal, but formal, for parties, for dancing, and for dancing. For dancing, you'll need a dress for a party. For dancing, you'll need a dress for a party. For dancing, you'll need a dress for a party.

And of course, shoes, gloves and bags. Shoes are flat-soled saddle shoes, sport oxfords and pumps. Vary on this theme if you like, but these are always good. Flat for school, Cuban heels for football games and town, pumps for dress.

PICKUPS

- Extra money should go for these things—in order of importance:
1. Another skirt, plaid or pleated, or both.
 2. Any number of sweaters and blouses.
 3. An extra jacket.
 4. A wool dress. Maybe a silk and wool combination in raspberry with intricate crossed ties for sole decoration.
 5. An extra silk dress. I suggest a wool dress with satin top and a wool bottom. This combines the wool suggested above with your dress-up dress. But it can't be worn to classes as could an all wool.
 6. Extra shoes. The college girl usually buys a comfortable pair and wears them month after month. But you should have an alternate pair so the others can be repaired once in a while.
 7. A variety of scarfs and mittens.
 8. One of those cute sweaters "Ironie." Like the pique and satin toppers so popular with suits when you don't want to be hot, yet want to wear that comfortable suit. These "Ironies" look like sweaters, are, in fact sweaters about 8 inches across the front, full length from neck to waist, and with round necklines, but they have no backs or sleeves. Good for warm fall days. Have seen them only in an East Lansing shop so save a dollar or two to spend when you get here.

YWCA

(Continued from page 2)

"Y" membership is open to all college women and is a group where Greek letter affiliation means nothing and both sorority and independent women work on a common basis.

The main purpose of the organization is to widen the social, educational and social scope. During the year coeds are responsible for many social events, such as the Snow Tea, held late in the fall for the purpose of introducing all freshmen to the college faculty women and to the members of the "Y."

At Christmas time the "Y" sponsors a Christmas party for underprivileged children in and around Lansing.

During the winter the "Y" holds all-college dances which serve as "get acquainted" parties for old and new students.

In the spring the May Morning breakfast is a big thing on the "Y" girl's program. This breakfast is given in honor of Mother's Day for all college girls and their mothers who wish to attend.

The girls' round out the year with a Fireside Chat which takes place in the Forester's cabin, and is an event in which both students and faculty participate.

Every other week members meet in a group and spend their time discussing their particular subject or planning their part in some program. These discussion groups are unsupervised and for this reason opinions can be exchanged without alteration by an older person.

Job Interviewer



GLEN O. STEWART
Selecting 100 men out of 1,600 applicants for NYA work, is the task that faces Mr. Stewart. Aside from this, Stewart keeps himself busy with alumni secretary duties.

WKAR

(Continued from page 2)

Salute, a program of request playing of recorded music, and time temperature, and weather information.

Freshmen will be introduced early to WKAR, and some participate in broadcasts, for it is planned to broadcast freshmen week activities over this station.

In addition, a number of programs of the "inquiring reporter" or "man on the street" type are broadcast each year. WKAR also broadcasts each year football and home baseball games.

Special events on the campus and at the State Capitol in Lansing are also broadcast. A mobile short-wave transmitter permits broadcasting of classroom sessions and agricultural field experiments. The station cooperates closely with college departments, the extension service of the college, and the college experiment station, as well as with departments of state government and other state organizations.

Dawn Salute Is Popular
A program popular with students is the early morning Dawn Salute.

Salute, a program of request playing of recorded music, and time temperature, and weather information.

for Proportioned-Fit it's Rollins Stockings



MAR-JO SHOP
East Lansing, Michigan
HOSIERY and LINGERIE

THE InK Pot STUDENTS SUPPLIES
East Lansing, Mich.

So Your Coming to State!

Welcome to East Lansing! The town is yours. Every door swings wide for you as you walk down the Avenue.

Right across from the Union Building you'll see THE INK POT.

Students like to come to this store for their supplies, because it's so convenient.

Just about everything you need is available here.

Typewriters, now, you'll need a typewriter. You may rent one, or buy one—in either case, possession and use the machine immediately on payment of the five dollars—leasing same as rent.

We sell Underwood and Remington Portables.

We'll be seeing you—we hope!

D. S. BROWN, Prop.

Welcome Freshmen

We Are Featuring **BABY CURLS**

Thank goodness, no pig tails are included in our favorite "Little Girl" look! For once, hair can be the easiest part of it all! It's simply "short and curly" . . . the kind of a hair do that men can muss up and not make a woman mad.

SPECIAL

Machinless	Machine
\$6.50 for \$3.00	\$3.50 for \$2.00

POLLY PRIM BEAUTY SHOP

318 ARBON BUILDING PHONE 4-1714

FOR FLOWERS COME TO JEWETT'S

EAST LANSING
128 WEST GRAND RIVER — PHONE 4-2015

CLEANERS

Turichell's

PHONES 5-3310

WAIT—see what smart M.S.C. co-eds wear on campus. For correct college styles, consult our *College Shop* in Lansing at 116 West Allegan Street.

Glamour For the "Gamma" Girl

SAYS THE *rambling junior*

See-worthies, fresh as rain, to capture the heart of the college girl. Favorites of the Junior from morn 'till night . . . from Maine to California. For lucky 9 to 17's.

As advertised in "Mademoiselle."

A. For fresh faced appeal, "RAMBLING JUNIOR" short-sleeved dress in an exclusive Jamestown shawl worsted plaid. Stitched pockets, cluster pleats and a little white collar. Black brown wine. \$14.95.

B. For formal, "RAMBLING JUNIOR" picture dress of Chenere's "Cinderella" non-crushable silk and rayon velvet. Point de Venise lace trim and graceful cingaline skirt. Black, wine, sapphire. \$25.00.

C. For extra beauty of texture and dull surface, the new Muntzucker back. With the new Muntzucker back. Two tones of blue, green, praline, grape wine, or black with red. \$18.15.

The Style Shop
116 WEST ALLEGAN

JEAN'S KEWPEE CAFETERIA


"Lowest Prices in the State" ACROSS FROM CAMPUS

FRESHMEN

For good wholesome food and plenty of it at prices easy on your purse.

The Hunt Food Shop

NEW



Underwood and Remington

PORTABLES

LOW DOWN PAYMENT
NATIONALLY ADVERTISED TERMS

FACTORY REBUILT
STANDARD TYPEWRITERS
OF ALL KINDS

Top Allowance on All Trade-ins

GREGORY MAYER & THOM CO.

Stationery — Printing — Blank Books — Lithographing and Engraving — Loose Leaf Devices — Office Furniture
224 SOUTH CAPITOL AVENUE, LANSING, MICH.

Scoop Says

By GEORGE MASKIN

This is the reincarnation of a column, which I figured, died when Michigan State gave me my walking papers last June. By walking papers I mean a degree of some kind or other which symbolizes your completion of studies prescribed for graduation.

To you, as incoming freshmen, such an event unquestionably looks a long way off. Four years of schooling (if you last that long), and it will be June, 1943. But distant as the day of graduation may appear, it comes on in a big hurry—faster than most of the boys and girls wish.

In this column I am supposed to discuss the prospects for 1939-40 in football, basketball, track and baseball. They're the big sports at State, as you undoubtedly know. We also have cross country, swimming, wrestling, boxing, fencing, tennis and golf, which coupled with the major activities give State one of the best rounded athletic programs in these United States.

Football naturally is KING of the collegiate sports. It's the sport in which alumni and undergraduates harp the most for victories—the one in which coaches are subject to the greatest headaches, and the college sport which the newspaper and radio boys play up the most.

State Faces Its Toughest Schedule

What about this year? Bachman tells everyone: "We are going to play the toughest schedule in our history."

Bachman has made the same statement before other seasons. Occasionally it was just an exaggeration, but this time Bachman speaks only the truth. Take a gander at the schedule which faces our boys.

State will start practice the first week in September with its ranks cut deeply by graduation. Absent will be John Spencer Pincel, the All-American halfback; Allan O. Diebold, the spirit-injector from Jackson who played quarterback, blocked and really ran the team; Gene Cholek, Pincel's understudy; Ust Hancey and George Kovacich, two able fullbacks; Steve Sraaz, speed merchant of a right half; Ernie Bremer, a stalwart tackle; Carl (Ole) Nelson and Dave Diehl, ends, and Darwin Dudley, guard.

Bachman Has Done Marvels Here

The Pincel and Diebold losses likely will be most keenly felt. The coaches are confident they can replace the other graduates, but shudder every time they think what they will do about filling the shoes of Pincel and Diebold.

However, the picture isn't too dark. As Bud Shaver once said, "Bachman has done marvels at State." Bachman, I am convinced, will come up with another powerful aggregation. Most of the boys who played last year will be back, along with a contingent of promising freshmen.

It's too much to expect State to go through undefeated, or escape with only one defeat. I'm passing this information along to you now, before you engage in any bets with your pal, who possibly will enroll in Michigan next Fall.

Enough said about football. The graders operate only until December when they yield the spotlight to Ben VanAlstyne and his basketball men. And what a team State will have this year!

Squad of Cage Stars to Return

The Spartans lose one man, Leo Callahan, from the 1938-39 team. Returning will be a host of star talent, headed by Chet Aubuchon, one of the greatest of all-state basketball men. Marty Hutt, Frank Stadler, Bob Phillips, and many others.

This year's team will play a coast-to-coast schedule. During Christmas vacation, they'll invade the West Coast. In February, the boys are going Broadway, taking on Long Island university in Madison Square Garden.

When the basketballers reach midway point in their schedule, the trackmen begin to blossom out in full regalia. With a regulation indoor track available for the first time, the 1940 squad's hopes are running high.

Baseballers Make Trip to South

The trackmen continue their activity into the spring, when the State campus really is a beautiful sight. And with the arrival of Spring, the baseballers of John Herman Kuhn inaugurate their stiff schedule, which includes a 2,000 mile or more trip into the South.

State has experienced only one losing season since Kuhn took over the coaching post in 1933. Last year the boys beat the 300 mark, despite a juggling staff which didn't boast one efficient marksman at the start of the season.

I could go on endlessly in this preamble of what you can expect in Michigan State athletics. But my old pal, Vic Spanio, who guides this paper, controls a mighty black pencil, so for now it's Good Bye and Good Luck.

Athletic Department Adds Kircher, Holsinger

By GEORGE MASKIN

Meet the coaches --- as grand a group of men as you'll find any place.

RALPH H. YOUNG—He's the head man of the athletic department... in other words, the athletic director... Also bosses the track team... and probably has been the most potent individual figure in the rise of Michigan State athletics to a spot in the national limelight... A jolly of fellow... and he'll be glad to meet you all.

CHARLES W. BACHMAN—Call him "Charley" or "Bach". He's head football coach... Directed State teams which beat Michigan four times in a row... Graduate of Notre Dame where he starred at center... Formerly coached Northwestern, Kansas and Florida... Came to State in 1933.

BENJAMIN F. VANALSTYNE—Call him "Van". Head coach of basketball team... around since 1926... Has put out several powerful aggregations... Used to utilize a "set play" offense... Now goes for the fast break... Coaches golf team... He's a Cornell man and came to State via Ohio Wesleyan.

JOHN H. KOBBS—He's plain John. He'll coach the baseball team... and has done a mighty swell job since he came here in 1924... Team has finished below .500 only once... In the Fall he heads the freshman football coaching forces... He's a top ranking basketball official in mid-

west collegiate circles. **LAUREN P. BROWN**—"Brownie" is the nick name... Builder of State's championship cross country teams... The Spartans, prior to last year, won the I.C. 4-A title five years in a row—a modern record... Also coaches distance runners on track team... Was a brilliant runner for State before he took up his coaching duties.

JOSEPH HOISINGER—Joe joined the staff last April after Mike Casteel left for Arizona... Coaches the backfield on the football team... also will work with the freshman basketballers next fall... Played football under Bachman at Kansas State... Isn't as tough as he looks... Plays a mean game of golf.

ALTON S. KIRCHER—Never have met him... Kircher joins staff in the Fall as assistant coach in football, basketball and baseball... Former all-around athlete at State... one of the few to win letters in three major sports here... Has been coaching high school teams in the Upper Peninsula.

THOMAS KING—Familiarly known as "Tom"... Now with Mike Casteel gone, Tom's the best dressed member of the staff... Aids Charley Bachman with the football team, coaching the ends and tackles... In the winter, coaches freshman basketball team... Incidentally, like Bachman, King went to Notre Dame.

That's the setup. Drop around and see them... They'll enjoy making your acquaintance... whether you play or not.

Will Play Five At Home

*Sept. 30—Wayne.	Nov. 4—Syracuse.
Oct. 7—Michigan.	Nov. 11—Santa Clara.
Oct. 14—Marquette.	*Nov. 18—Indiana.
Oct. 21—Purdue.	*Nov. 25—Temple.
Oct. 28—Illinois Wesleyan.	*Home Games.

Bowling

RAINBOW RECREATION

Billiards

SCHRAM

Tailors and Cleaners

224 ABBOT ROAD

Downstairs

All Kinds of Alterations and Repairs

GET STARTED RIGHT!

Selected by the Military Department to Supply the


OFFICIAL R. O. T. C. SHOES

Our R. O. T. C. Shoes for Freshmen are APPROVED and Correct. Priced

\$4. \$5. and up

EVERY PAIR CAREFULLY FITTED BY EXPERIENCED SHOEMEN

We have served the shoe needs of State men and women for the past 12 years.



DE CAMP'S

108 WEST GRAND RIVER AVENUE—EAST LANSING

SEE US FOR —

STUDENT LAMPS

AND ALL OTHER ELECTRICAL NEEDS

East Lansing Electric Co.

136 West Grand River Phone 27761

Remember STATE'S 1939 Home Football Schedule

WHEN YOU PLAN YOUR VISITS TO EAST LANSING THIS FALL

- Sept. 30—Wayne University (\$1.00)
- Oct. 7—Michigan at Ann Arbor (\$2.75)
- Oct. 14—Marquette (\$2.25)
- Oct. 28—Illinois Wesleyan (\$1.00)
- Nov. 18—Univ. of Indiana (\$2.25)
- Nov. 25—Temple Univ. (\$2.25)

Use the Following Blank to Order Tickets by Mail. — Send to

L. L. FRIMODIG, Ticket Manager
MICHIGAN STATE COLLEGE, EAST LANSING, MICHIGAN


Michigan State College FOOTBALL TICKET APPLICATION

Name _____
Street _____
City _____ State _____

Please Mail Me:

Tickets for _____	Game, at \$ _____	per ticket
Tickets for _____	Game, at \$ _____	per ticket
Tickets for _____	Game, at \$ _____	per ticket

I Enclose \$ _____



CHARLEY BACHMAN
M. S. C. Head Football Coach

"MEET YOU IN THE GRILL"

- FOR THAT COKE
- FOR THAT LIGHT LUNCH
- FOR THAT P. M. DATE

That saying is not a mere expression—it's an exact FACT.



Two cokes and a malted. View showing most popular spot on campus during in-between-class period. The Union Grill includes a modern soda bar, tables and booths to serve you conveniently.

UNION GRILL —

Open 7:00 a. m. 'til 10:00 p. m.

FOR REGULAR MEALS

UNION CAFETERIA —

Hours: 11:30 a. m. to 1:00 p. m.
5:15 p. m. to 7:00 p. m.

Coupon Discount Books are good in both Grill and Cafeteria.