

Today's Campus

Three Dead Mice

Today's years of stalking... to country plant have given... received yesterday... Ed Kowalski found... in the feed storage... of the egg-laying... headquarters, left... own devices, left... mice emerging at... and so went after... a moment later... mouse half eaten... another after... of the third. It was... work for Tabby... all three on the...

Dean Likes Booklet

From a standpoint of form, design and general make-up, it is the best freshman handbook we have ever had," said Dr. Fred T. Mitchell, dean of men and chairman of Freshman Week activities, in commending Joseph Danan, assistant bulletin clerk, for editing the booklet.

Red Hen Loses

The fabulous honor of the Little Red Hen has been lowered. It was a Little White Hen who won out in the 10th annual Egg-laying contest which closed Wednesday.

His Nicer Here

The talk going on about the freshman encounter between Cook, Alpha Gamma and Beta Chi is still being heard down and tells in a good way the time she first visited Michigan State as a transfer student.

Reserve Officers Met for Conference

The officers of the High Reserves met in East Lansing last school year... of September 9 and 10... Lake Lansing... in cooperation with... of the School of Blind... Those who attended... Betty White, Anne Gow-Bow, Kathleen, Betty Urquhart, Betty Virginia M. Kenzie, Mrs. Bowman, Evelyn Tussing, and Mrs. Sales. Miss Dorothy...

YWCA Welcomes Newcomers

The YWCA welcomes all girls... into its membership... provides fellowship for every... of removing the barriers... in cooperation with... of the School of Blind... Those who attended... Betty White, Anne Gow-Bow, Kathleen, Betty Urquhart, Betty Virginia M. Kenzie, Mrs. Bowman, Evelyn Tussing, and Mrs. Sales. Miss Dorothy...

Spartan Salesmen

The Spartan sales staff will meet in the Spartan office at 10 o'clock Friday morning.

Wolverine Notice!

There will be a meeting of all those who want to work on the editorial staff of the Wolverine Monday, Sept. 26, at 5 p. m. in room No. 14, Union Annex.

State Eleven Faces Wayne in Opener Here Tomorrow

Tartars Invade Macklin Field Boasting Strongest Team in History; Bachman Picks Lineup for Inaugural Game

Football, the fall pastime of the nation, comes into the limelight at Michigan State tomorrow when Coach Charley Bachman parades his Spartan eleven against Wayne university in the season's opener in Macklin Field at 2 p. m.

Rare Flower Grows Record Blossom On Campus

The flower, now in its second year, produced a leaf 62 inches in diameter on September 1. At that time there were eight blossoms, each over 12 inches in diameter.

Football Fans

State students will sit in the west stands of Macklin field for the Wayne game instead of occupying their usual reserved seats in the east stands.

Short Visits Rule As Rushes Meet Pan-hellenic Girls

Local chapters of the eleven Panhellenic societies on campus will hold open teas Sunday afternoon, 2:30 to 5:30 for all underclassmen, non-sorority girls.

All Students Have Rooms, Say Officials

That is the general answer from both men's and women's housing officials when asked about rooming conditions.

YV Opens Program; Welcomes 600 Girls

YWCA opened its year's program by entertaining 600 new comers at the annual YV Coffee Wednesday night.

Bewildered Frosh Beset By Badgering Woes

Do I have to pay my fees first? "But—my advisor said—"

Coed Carnival Slated For Thursday

Theme to be Clinic To Acquaint Coeds With Organizations

Mary Boer, junior Home Economics major, Marjorie Tribe, senior Liberal Arts student, and Lee Youngs, Physical Education major will serve as co-chairmen of the AWS Coed Carnival, which is scheduled for September 29, from 7:30 to 9:30 o'clock in the gym annex.

Sorority Teas Slated For Sunday

Local chapters of the eleven Panhellenic societies on campus will hold open teas Sunday afternoon, 2:30 to 5:30 for all underclassmen, non-sorority girls.

MSC Dairy Judges Place Second

Michigan State's dairy products judging team took second place in the recent judging contest at the Eastern States Dairy Exposition.

Flat-Faced Floogies To Be Aided By Beautician

Have you a double chin? Do freckles crown your nose? Is your profile below par? If you are handicapped by any of these other facial deficiencies, don't worry for they will never show on your individual picture in the 1939 Wolverine.

Ban Stifles Yearbook

President Robert S. Shaw decreed yesterday that there could be no soliciting by Wolverine salesmen on the campus.

Wolverine Salesmen

Wolverine salesmen are asked to turn in all salesbooks Saturday immediately after the Wayne game.

State Enrollment Is Estimated At 6,000 by Yakeley on Basis Of Freshman Applications

All-College Dance to Replace Annual Freshman Mixer

Though registration of students is still in progress, and Michigan State's population today is still a question mark, a record-breaking attendance of approximately 6,000 is anticipated by Eliza Yakeley, college registrar.

Student Mixer to be Two Parties Instead of One

Students attending Saturday night's student mixer sponsored by Blue Key and Mortar Board, can now take in two parties instead of one.

New Courses Slated For Fall Term

An entire department has four new courses and more than eight classes will be newly added to the new department.

Farley to Talk To New Coeds Tuesday

Farley, 1937 graduate and former member of the Board of Trustees, will speak to the new women students on Tuesday.

Convoc Speaker

President Robert S. Shaw will be the speaker at the convocation held in the Union Annex on Tuesday.

Wolverine Notice!

There will be a meeting of all those who want to work on the editorial staff of the Wolverine Monday, Sept. 26, at 5 p. m. in room No. 14, Union Annex.



President Robert S. Shaw

CORAL GABLES

New Planning
KIP FRAZER
and
His Orchestra

Starting Sept. 23, EXCEPT MON. and THURS.

KODAKS ARGUS ZEISS LEICA

BRING YOUR PHOTOGRAPHIC PROBLEMS TO

LENN CAMERA SHOP INC.

109 South Washington Avenue, Lansing

OPEN EVENINGS — HOME OF LINPRINTS

Welcome to M. S. C.

Freshmen and Upperclassmen

Make your college days pleasanter by allowing us to take care of all your ordering needs.

BLUE SINOVO MOTOR UNIT
Storage Batteries and Tire Service

PLETZ & SON

Cor. Michigan Ave. & Harrison Rd. AAA Service Phone 2-3113

State Building Program To be Self-Financing; 5 Buildings Okayed

Five new buildings—auditorium, hospital, women's dormitory, veterinary science clinic and livestock pavilion—will be constructed on the M. S. C. campus during the 1938-39 school year as part of the most expensive building program in the college's history.

Newest step in the improvement program is a PWA grant of \$1,350,000 for campus land-scaping, grading, bling and other projects. A second men's dormitory, similar in size and design to the recently completed Stevens T. Mason hall already under construction, making a total of six new buildings already assured during 1938-39.

Financed in part by PWA grants and in part by self-liquidating bond issues, the entire improvement project will cost the state less than \$125,000. Total cost of the self-financing building program, including buildings already completed, buildings under construction and other approved or projected improvements, is approximately \$4,300,000.

Proposed buildings include: \$300,000 men's gymnasium and field house, for which the college will ask a \$275,000 PWA grant; the college's portion of the cost \$412,000 would be covered by bond issue to be retired from

student athletic fees over a 20-year period.

Construction of additional men's and women's dormitories gives the college when the fall term opens in September, 1939, housing facilities for approximately 1,000 men and 1,000 women students. The new dormitories, auditorium and hospital will be built without cost to Michigan taxpayers. PWA providing a total of \$900,000 in grants for these buildings. The state's portion, \$1,350,000, will be paid from building fees, the state board of regents having voted to be self-liquidated over a 20-year period for the auditorium and dormitories and over a 10-year period for the hospital. No increase in student fees will be necessary, according to Secretary John A. Harbo.

The \$250,000 veterinary science clinic will be financed by a \$200,000 PWA grant and \$47,500 allowed the board of regents last April by the State Emergency Appropriations commission.

Decision to construct a livestock pavilion, for cost \$425,000, immediately the board was assured by a committee representing Michigan livestock associations that these groups would appeal to the legislature for funds to reimburse the college for approximately \$31,000 the amount the state board must provide from its revolving fund before it can accept the PWA grant of \$42,500.

FROSH

(Continued from page 1) me with which in the fund house that they are there with that fund for the new term, only to be met by a similar case of many buttons and held in a firm grasp to go that way to be interpreted.

Finally, with a strong impression that some doesn't pay, and that some other fellow is a thing, the first year of the building fund. It's just out of the gym and for 1000's are more.

Until next week when he will find out that his card is not that his card did not come through that he, looking singly, signed up for five \$100's and that he has been attending class in the wrong section for three days.

Pass In Review!

MICHIGAN STATE NEWS CAMERAMEN PRESENT HIGH POINTS OF THE CAMPUS WEEK

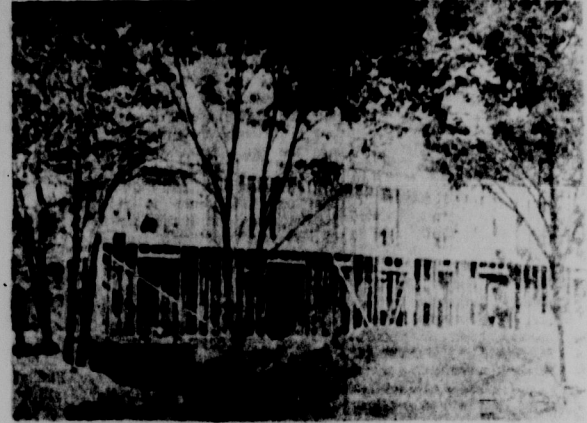
- KING FOOTBALL RETURNS
- ALPHA PHI BUILD
- BEAUTIES PARADE



ONE TWO HIP! ONE TWO THREE! With this familiar Spartan quarterback bark, Michigan State gridgers swing into action during a practice session on the Old College field. Michigan State opens its 1938 campaign against Wayne University Saturday at Macklin field.



"Hi Yab, Charlie," says counselor JIM DAVIS, Union Board proxy, as he welcomes frosh CHARLES BACKERSON to Stevens T. Mason hall. State's newly opened men's dormitory. Backerson is an engineer from Cleveland.



They're building off campus too! Scheduled for completion some time after December first is the new Alpha Phi home on M. A. C. avenue. This begins a Sorority row with the Kappa house across the street and Alpha Chi's only a short distance away.



Lonesome fellows? Here's the remedy. On the left, JEAN McLENNAN, last year's Sparty Gal, confers with her "big sisters," BARBARA ALLEN, MARTHA MCCOY, JUDY CROZIER, and NANCY EDDY. Fourth from the right, CARTER GOULD explains freshman work to DOROTHY LANG, HARRIET BRODERICK, and LOIS SCHAUFFELE. All these coeds are North Williamites. Both Misses McLennan and Gould are "big sisters" in the AWS freshman council system.



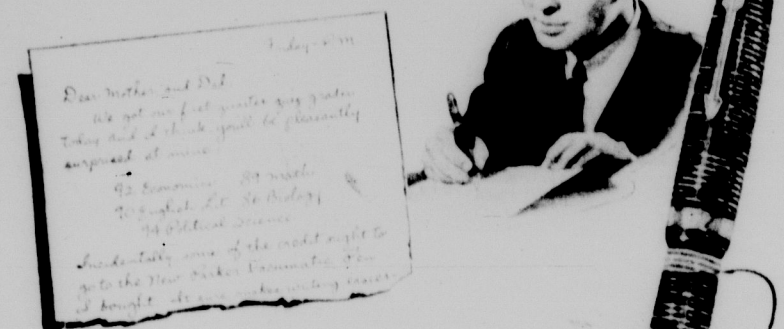
BILL HASSELBACH, Student Council president, guards the entrance to the freshman convocation in Demonstration hall.



"Two cokes and a malted." Students have thronged the new Spartan grill from its very opening. The grill, undergoing extensive remodeling during the summer, now has a new soda bar, tables and booths, and occupies larger quarters in the former 1042 lounge.

Start On Even Terms with Any Other Student

by getting the Pen that Has What It Takes to help you rate marks that you can write home about



You can SEE the level of ink at all times—see when to refill—so it won't run dry in classes or tests

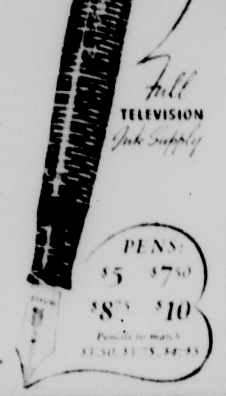
Naturally, your Parents want you to start the new term of a pen with any one else in your class. There's why they'll want you to back your home with a Pen like the revolutionary new Parker Vacumatic.

Its Scratch-proof Point of Platinum and 14 K Gold writes like a fountain pen. It's tipped with a special smooth Chromadium tip, writes as smoothly as ordinary fountain pens. And the Parker Vacumatic won't let you down by running dry unexpectedly in classes or quizzes. Held to the light it shows the ENTIRE ink supply—so you know when to refill. And it holds out a

precise reserve of ink to begin with that you need fill only 3 or 4 times from one term to the next.

Go to any good pen counter today and try this patented Beauty of Invention. It's the Parker Vacumatic, the most original style. And look for the word AEROW clip. This identifies the genuine and distinguishes the owner.

The Parker Pen Co., Janesville, Wis. Makers of Parker Quink, the new pen-clearing writing ink. The 26 and up.



Wanted: a humorous title for an Esquire cartoon—Winners will share \$5000 cash!

SEE PAGE 100 OF THE OCTOBER ISSUE OF Esquire

ON SALE AT ALL NEWSSTANDS

CALLING ALL FROSH and UPPER CLASSMEN TO THE ALL-COLLEGE DANCE SAT., SEPT., 24 At UNION BALLROOM and DEMONSTRATION HALL Music Furnished By BOB SIEGREST and RED DRENNAN One Ticket Good for Both Places DANCING 9:00 - 12:00 — — — 25c per Person TICKETS ON SALE AT Union Desk, Sandy's, Smoke Shop, and at the Door BLUE KEY AND MORTAR BOARD, JOINT SPONSORS

Michigan State News

Published at special rate... Michigan State News, Lansing, Michigan.

Member Associated Collegiate Press... National Advertising Service, Inc. 420 MADISON AVE. NEW YORK, N. Y.

Toward Easier Classification

The third man who felt the elephant's tail thought an elephant was like a rope. Similarly, the freshman classifying M. S. C. for the first time thinks a college is like a side show or county fair.

Much is Changed

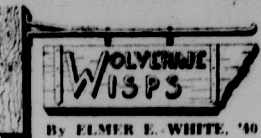
Each year as a new freshman class enters Michigan State college, there are to be found changes on the campus which are accepted by the freshman as quite normal.

Hello, Michigan State!

What's this we hear? An upper-classman says, "It's only a matter of time now until the 'friendly spirit' at Michigan State will be a thing of the past."

Quotable Quotes

Disinterested research cannot survive in an atmosphere of compulsion and repression. It withers under the efforts of governments to impose uniform ideologies and to circumscribe the interests of a dominant regime the area of intellectual liberty.



By ELMER E. WHITE, '40
Pity the poor student body! In the Union and at various spots all over the campus every one is trying to sell someone else a Wolverine, a Spartan subscription (cut rate) an etiquette book...

MARRIAGE BUREAU

Big splashes have been made in the provincial sea of matrimony in the last few months. Ray Turner, editor of the State News, has been keeping it a secret since May 21. He is up and married Virginia Small, Zeta Tau Alpha. Then there's Bill Johnson, last year's Wolverine editor, who married Peggy DeWalt, Alpha Phi. So next to Johnson in the office and it seems he should be happy. That's a good sign indeed. The Alpha Phi class of '37 holds since June and the Phi O. Chi class live of their last year's officers are sitting across the breakfast table from the same folks every morning.

Laundry Cases advertisement. Canvas Cam-Pro Covers, Standard Size Filler, Water-proof. \$125. Lieberman brand.

HEADQUARTERS for LITERATURE, MUSIC, ART of the SOVIET UNION. Includes information about Soviet News, International Literature, USSR in Construction, and a free catalog of music.

Independents Furnish Appealing Program

No, we are not trying to sell any insurance. However, here are a couple of statistics. Freshmen especially take note. Of the 3,300 men on campus, 796 of them are fraternity men. The other three-fourths of the male population on the M. S. C. campus are Independents—members of the Independent Men's League.

A HAPPY THOUGHT FOR THRIFTY COLLEGIANS - SEND your weekly laundry home by handy Railway Express. Includes image of a man with a suitcase.

Good Wholesome Food At Reasonable Prices. HARBORNE'S Meal Tickets. Includes image of a building.

EPISCOPAL STUDENTS! ST. PAUL'S CHURCH. Includes information about church services and a cordial welcome.

PEOPLES CHURCH East Lansing. An interdenominational church where students of all denominations attend. Includes information about a Freshman Sunday service.

SEARS 52ND ANNIVERSARY Sale. Includes large graphic of '52ND ANNIVERSARY Sale'.

ROYAL PURPLE HOSIERY. Values to 66c. Includes image of a woman in hosiery.

STREAMLINER 5-Tube Radio. \$8.95. Includes image of a radio.

DESK LAMP \$1.00, CARD TABLE 52c, Bedspreads \$2.98, HOMESPUN 69c yd. Includes images of various home goods.

POPULAR BALL FRINGE CURTAINS 79c pr. SAVE AT SEARS. ROEBUCK AND CO. 306 E. MICHIGAN AVE. LANSING. Includes image of curtains.

Bowling
RAINBOW RECREATION
Billiards

ATTENTION STUDENTS!
THE
**GRIDIRON
DINING ROOM**
OPENS SUNDAY
NEWEST AND BEST
POPULAR PRICES
JUST EAST OF KROGER'S

SMALL'S
Back to School
Apparel
Have all the correct answers
to a college man's wardrobe.



SHAGLAND SUITS styled by Robert Surry, are stylish and tailored by Hart Schaffner & Marx in the new three-button draps coat (button top two). Neoprene turt herringbone waives.
\$29.50 and \$35
"COLLEGAIRE" Two trouser suits and topsuits in new rough fabrics in greys, browns and blues, priced at
\$25 and \$30
WEATHER-WIZARD Reversible Top coats in impervious treated washable and lined twilled gabardine, canvas, oxford, outstanding at...
\$22.50
Lined Gabardine
Bush Jackets \$5.95
Berg University Hats, \$3.50
McGregor and Rugby Sweaters \$3.50 to \$6.50
Alligator Rain Coats, \$5.75
SMALL'S
Grand Plaza Building

Injury Jinx Hits State 'Dalers'

Joe Martin Lost To Spartans for Two-week Period
Injuries this week struck another blow to State's already weakened cross country team, when Joe Martin, promising sophomore, was declared out of action for at least two weeks. Martin injured his knee in practice Monday, and it has failed to respond to treatment.

With Martin on the sidelines, Coach Lauren Brown is faced with filling gaps in the State ranks which were badly riddled by graduation. Six lettermen are lost from last year's ICA victors, with the result that Brown has but two major letter winners to build a new team around.

Richard Frey, junior distance ace, arrived in the fold Wednesday to complete the group that was invited back for early practice. The remainder of the squad of 15 men has been working out twice daily for two weeks.

With the exception of a few of the customary sore leg complaints, the condition of the team as a whole is at least two weeks ahead of last year. However, this progress is offset inasmuch as the season opens 150 weeks earlier this fall.

The Spartans will face the first hurdle in their stiffest schedule in history October 7 when they meet Butler on the State course. High light of the season will be the combined National and Central Intercollegiate meet on November 21.

Frey and Capt. Harry Bille will form the nucleus of this year's team. Both were regulars last fall and are major letter winners. Three juniors, Roy Feltz, Bill Mansfield and George Keller, all junior letter winners, are also destined for berth as regulars.

Martin, with Fletcher Gibson and Ed Mills, are the cream of the sophomore crop, and will probably round out the team.

Included among those who are fighting to displace the first string seven are Roy Osborn, a senior recruit from the track team, and Al Morgan, member of the 1936 U. S. Olympic team, and the 10,000-meter walk champion of the country.

He'll be in There Tomorrow



Although in the hospital earlier this week suffering with a heavy cold, Ron Aline has rejoined the Michigan State football team and will be at his regular position of center when the Spartans open against Wayne tomorrow. Aline and Tom McShannock divided the center assignment last season. McShannock is out of Wayne game because of a broken hand.

Intramural Program Offers Chance to All Students

In keeping with State's athletic department motto, "Sports for All," many of the more than a hundred teams that will participate in the intramural sports program throughout the year will begin action early in October.

Under the supervision of Assistant Athletic Director Fleming, several touch football leagues will begin battling in their respective circuits to open the season. Older leagues will be the Inter-Fraternity and the newest the Mason fraternity organization. Another league that is rapidly growing up is the Independent Men's League. Organized this year ago it has become comparable to the Fraternity group.

It is hoped that this year the winners of IMI and the Inter-Fraternity series will meet in a playoff to settle the rivalry that has been going on in the relative merits of the two leagues. Play-offs have been scheduled for the last two years but have had to be cancelled because of bad weather.

Later in the fall there will be Inter-Fraternity basketball, swimming, tennis and tennis playing. During the winter there will be a basketball league. All the sport course, track and intercollegiate.

During the fall season, which approximately 1,000 students will participate in intramural sports, the athletic department plans to offer a number of special features, including an intercollegiate football game, a basketball game, a tennis match, and a swimming meet.

ALL COLLEGE
TEXTBOOKS
and
SUPPLIES
at
the
STATE COLLEGE BOOK STORE

Sophomore Squad Impressive

(Continued from Page 5)
a hard runner but has some defensive handicaps to overcome. He will undoubtedly see much service this year. Another backfield prospect, Paul Derrickson of Georgetown, Delaware, is running neck and neck with Amon. Although weighing only 162, Derrickson has speed to burn.

Cassy Klewicki of Hamtramck and John Budinski of Detroit are halfback hopes. The standout among the ends is Bruce Blackburn, a rough and ready customer from Flint. Bruce goes around 185 and looks to be another Neison at catching passes. Jim Flinn of East Lansing also shows promise.

In the backfield, four men show great possibilities. Jack Amon, fullback from Grand Rapids Union, was until lately a member of the varsity. He is fast and

STATE WELCOME STUDENTS!

MOTION PICTURES ARE YOUR BEST ENTERTAINMENT
Dial 5-0625
STATE
WELCOME STUDENTS!
TODAY AND SATURDAY
Men fought for her car... and died for her love and kisses.
Luise Rainer The Joy Wife
When DOUGLAS - Robert YOUNG
Barbara O'Neil - H. B. Warner
Directed by H. Ross Thompson
SUN. MON. TUES. SEPT. 23-27
Ah, romance!
OH, WHAT FUN!
Young
McCREA
THREE BLIND MICE
A new Century Fox Picture

Twichell's
CLEANERS-TAILORS
Trichlvrethylene
Cleaning

College Restaurant
Quality Home-Cooked
Foods at Low Prices
Home-made Ice Cream and Malted Milk
OPPOSITE HOME EC. BUILDING

Get Your Arrow Shirts at
Lewis Bros. Inc.
113 South Washington

BACK TO THE GRIND
looking grand!
We've timed your arrival on campus with everything that's new in shirts. Stripes and checks you've never seen before—colors that are quiet—new collar models—all tailored with the Arrow touch—all streamlined Mitoga fit and Sanforized Shrunk. Auction off your die-hard Arrows and get a load of new ones. \$2 to \$5.
Arrow ties to harmonize \$1. and \$1.50
ARROW SHIRTS

HARRYMAN'S...
Back to School In
"BLIMPS"
Crepe Soles
\$5
\$5
\$6.50
Jarman
SHOES FOR MEN \$5 to \$7.50
MAX HARRYMAN SHOES
118 S. WASHINGTON AVE.
LANSING

Play -
INDIAN HILLS
GOLF COURSE
Welcome. Freshmen!
Get acquainted with this store. For 21 years we have maintained our leadership with "Smartest Hat" on the Campus.
See our "Turnstile" green sweaters, brown and tan jackets, and "Destiny" T-shirts. Inexpensive, durable, smart jackets. Gabardine jackets with leather collars, and all sport furnishings, ready.
KNOX HATS
MAY BROS.
The Hat Store of the Town
LITTLE SHIRTS
235 South Washington Ave.

The Arrow Collar Class
Highly styled with plenty of dash, the new collar models on Arrow Shirts are tops this season. Shirts in quiet patterns, checks, and colorful British stripes all tailored the masterful Arrow way. Mitoga-shrunk, Sanforized-Shrunk... \$2 to \$5
H. KOSTICHEK and BROS.
113 NORTH WASHINGTON AVE.
LANSING, MICHIGAN

Scoop Says

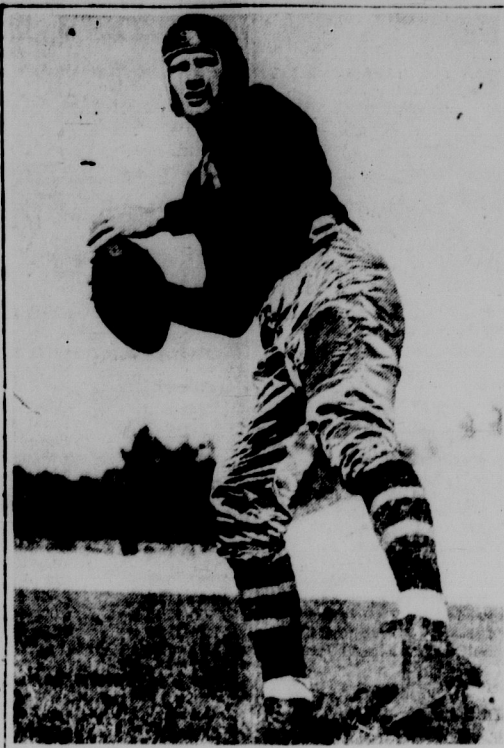
Continued from page 5

year, even though California went to the Rose Bowl. Syracuse will have a powerhouse since the Owls had the best freshman team in the league last year. "Yes, yes, coach," we snapped. "How about Michigan? You know that team we play a week from Saturday." Bachman gave us one of his funny looks. "Well, George, Michigan had a good line last year. They still have a good line. In addition, Michigan now has a fine backfield, so draw your own conclusions." We assured Bachman we would. "The game always is a tough one, at least it has been in recent years. It should be that way, and unless I miss my guess, not very many points will separate the two teams when the final gun sounds." Bachman turned away and moved toward the Spartans. He had given his piece on the team, which many predict will be the best in Michigan State history.

Women's Sport Card Slated

A varied program of sports is on tap this fall for coeds, the Women's Physical Education Department has announced. In the girls' dormitories, sororities and independent houses, teams will be organized to do battle in the tournament competition. On the card are hockey, bowling, basketball, swimming, volleyball and tennis. Besides the events between houses and dormitories, chess games are booked later in the year. Coeds are invited to take part in a breakfast hike tomorrow morning at 8:30 o'clock.

Watch Ciolek This Season



From his showings in practice to date, Gene Ciolek is slated for his greatest season of his career. Ciolek has been running better than ever, and also is exhibiting more confidence than he has in the past.

Preps Battle 'Rapids' '11' In Opener

By DON PHILLIPS

East Lansing, Trojans fire the opening gun of their football warfare this afternoon when they journey to Eaten Rapids. Coach Cuddy Spaw... will enter the game as an unknown quantity, lacking experience on the line minus a couple of aging backfield men, and without a capable punter. Spaw... knows practically nothing about what his line will do under competition as he has only two returns in the forward wall. Dick Hollbrook will head down the starting center post while Jack Weaver is a sure starter at left end. The rest of the line is composed of first-year men in those who have had but little actual experience in games.

LINE-UP IN DOUBT Harold Brock, Alvin Gandy and Dick Gilroy are all in line for the starting tackle positions with Gilroy having a little of the edge because of his punting ability. Both Gilroy and Brock will probably see plenty of action since the season is through. At the guards, Spaw... has been using Howard Robertson, Jack Decker and Dick Martin, a sure starting center. Richardson is a better punter than last year while Decker is a fairly good punter. Spaw... is probably looking for a starting punter.

In the backfield, the Trojans have a plentiful supply of able men and will probably be supported by the Eastern game program of success. We predict that the starting backfield will be Jack Decker, Dick Gilroy, and Alvin Gandy. The Trojans are also expected to have a strong line. The Trojans are expected to have a strong line. The Trojans are expected to have a strong line.

State Gridders Meet Wayne In Opener Here Saturday

(Continued from Page 1) George Gemin, brother of the coach and hero of the 1936 game, leads the backfield. Cudde, Wisconsin, the boy who was hit by a...

BILL PORTER and his Orchestra



This brilliant band under Bill Porter's direction has been "State's Smartest Dance Music" since 1931. The finest in musical entertainment for every occasion from rushing parties to all college dances. You may phone or write for prices and information without obligation.

BILL PORTER — 2335 Kensington Road, Lansing — Phone 5-8950 — A. F. of M.

SMALL FRY — SMALL FRY — SMALL FRY — SMALL FRY

THE LATEST SONG SENSATION!

Featured by

NATE FRY

Phone 5-6719

Member Lansing Local No. 303, A. F. of M.

SMALL FRY — SMALL FRY — SMALL FRY — SMALL FRY

Start The Year Right!

FOR

Rushing Parties, Open Houses, Term Dance

ENGAGE MEMBERS OF LANSING LOCAL No. 303

AMERICAN FEDERATION

OF

MUSICIANS

BANDS AND ORCHESTRAS

YOUR BEST STUDENT-MUSICIANS ARE

MEMBERS OF A. F. of M.

Call the Secretary (Mrs. Carl Dewey) at 5-5520 for List of Leaders

COMPLIMENTS AND BEST WISHES

THE DUDLEY PAPER CO.

FILL YOUR SWEET TOOTH

LANSING CANDY COMPANY

To the New College Drug Store

Compliments of Peter Pan Bakers

BUY BREAD BAKED IN LANSING

For your party—a band of All-Spartan Men

ARNO WEISS

and his

Orchestra

Phone 2-4451

A. F. of M. Local 283

COLLEGE DRUG NO. 1

FORMAL OPENING SATURDAY SEPT. 24

Visit us in our New Location.

SPECIAL BREAKFAST, LUNCHEON, SUPPER

Only the BEST foodstuff for the NEWEST drug store

Supplied by

A. W. WALSH CO.

WHOLESALE GROCERS

Lansing, Michigan

Compliments on Your Success Capitol City Cigar & Tobacco

Your REXALL DRUG STORE

In a New Location

Two Doors East of Corner

--THE--

College Drug No. 1

Announces

Formal Opening

— Extra Special —

Serving All Day, Saturday, September 24th

- Chicken Fricassee on Home Made Biscuit, Mashed Potatoes, Buttered Peas, Combination Salad, Hard Roll - Butter, Tea or Coffee

Miller's HIGH TEST Ice Cream

25c

Special—Banana Split All Day Saturday 12c

College Drug NO. 1

111 E. Grand River Ave. EAST LANSING

C. E. Wildon to Judge Detroit Dahlia Show

Prof. C. E. Wildon of the horticulture department returned recently from Chicago where he judged flowers at the Central State Dahlia show, September 12, 18 and 19.

Increase in Enrollment Entails Larger Staff

Increase in student enrollment has led to an increase in number of faculty, it was announced by President Shaw's office today. Thirty-eight new faculty members and thirty-six new members of the college personnel have been hired to take care of the expected 6,000 enrollment.

The home economics department has ten new members. They are Evelyn Zwemer, Winifred Washburn, Thelma Porter, Maxine McKinley, an



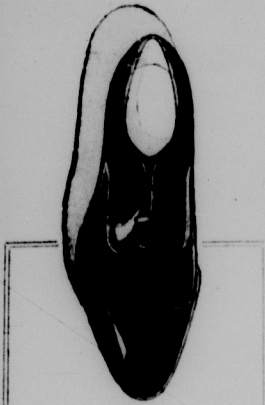
What Was MRS. WEAVER Got Against the Noble Oak Tree?

We haven't the foggiest notion. But we do know she bore into it to deposit her eggs. And the subsequent oak develops a protective growth known as a gall, from which she obtained the fat, unpalatable food.

You don't care a hoot? We thought you wouldn't. But you might care to know that Penit is a free floating, easy writing, trouble-proof, brilliant, sure fire ink for every make of fountain pen. Try it.



Sanford's Penit The Pen-Tested Ink for All Makes of Fountain Pens



Military shoes in fine brown, bright finish leathers. Narrow or wide toes. Straight cap. Sizes 6 to 12.

\$2.95 to \$4.95

Merritt & Bailey

112 1/2 N. Washington Ave. East Lansing

REGISTRATION OF UPPER CLASSMEN FALL TERM 1933

ALL STUDENTS with the exception of freshmen will register according to the following schedule:

H to O Inclusive 8:00 to 11:30 A. M. Friday, September 22 A to G Inclusive 1:00 to 4:30 P. M. Friday, September 22

ENGINEERS only will report to Dean Dirks' office as follows:

Friday, September 22 E to J Inclusive 8:00 to 10:00 A. M. G to L Inclusive 10:00 to 12:00 P. M. D to G Inclusive 1:00 to 3:30 P. M.

Saturday, September 23 A to B Inclusive 8:00 to 10:00 A. M.

The schedule for paying fees at the Treasurer's Office and for classification at the Registrar's Office is as follows:

Table with columns: Pay Fees, Classify, Pay Fees, Classify. Rows include letter ranges like W to Z, W to W, W to W, etc.

Table with columns: Pay Fees, Classify, Pay Fees, Classify. Rows include letter ranges like H to H, G to H, G to H, etc.

From 2:00 to 5:00 P. M. Saturday any student may pay fees and classify.

Hamburgs Fountain Service Jean's Kewpee Cafeteria The Lowest Priced Cafeteria in the State 327 East Grand River Phone 3557

DOG HOUSE by Walk-Over Burton's Walkover Shoe Shop 221 S. Washington Ave. Phone 2-5262

M. S. C. APPROVED MILITARY SHOES \$1.00 HANOVER SHOE CO. 170 South Washington, Lansing

A Complete Cleaning Service—Be Assured of Carefully Cleaned Garments With No Delay or Inconvenience ALL WORK GUARANTEED COLLEGE DRY CLEANERS 206 Abbot Rd. Phone 2-2535

Printing Plates For All Purposes THE CAPITAL PHOTO ENGRAVERS INC. 301 E. MICHIGAN AVE. LANSING, MICH. PHONE 2-1712

Welcome Students The Finest in Food and Ice Cream "Meet your friends at Matthews" Matthews Dairy Across from Union

Tower Guard Tea Set for Sunday

Miss Mabel Gentry, West Mary Hall, is sponsoring a tea set for the Tower Guard tea-making contest, Sunday, September 24, at the Tower Guard room, 200 S. State St.

CLASSIFIED

FOR SALE: House on East Main St. ... FOR SALE: House on East Main St. ... BOARDING: Room for rent on East Main St. ... WANTED: ...

Standing Order Chesterfield CIGARETTES They Satisfy with millions ... Chesterfield Time on Your Radio PAUL WHITEMAN Every Wednesday Evening 11:30-12:30 P. M. PAUL DOUGLAS Daily Sports Program 5:15-6:00 P. M.

GIRLS! — BOYS! NO DATES NECESSARY ALL-COLLEGE MIXER AT DEMONSTRATION HALL and UNION BALLROOM DANCING 9:00-12:00 TICKETS 25c DID YOU KNOW? There is a ratio of three boys to each girl enrolled at M. S. C.?