

Michigan State News

State News Party In Gym All Set For Friday

WEDNESDAY'S CONVOCATION TO BE SEPARATED INTO SIX DIVISIONS

WILL DISCUSS QUESTIONS OF DEPARTMENT INTEREST IN SECOND DIVISIONAL CONVO HELD AT STATE.

Questions of interest to the student body as well as to the faculty will be discussed from all angles at the convocation to be held Wednesday morning at 11 o'clock.

SOCIAL CALENDAR BEING COMPLETED

Prof. L. C. Emmons Announcing Parties Already Signed Up; More Later.

Official announcement of the fall term schedule of parties at the college is here made by Professor Lloyd C. Emmons, head of the Michigan State social committee.

The following is the schedule as it now stands: Michigan State News "Charleston" dance in the gymnasium, Oct. 9; A-Theon open house, Oct. 10; Eumonian open house, Oct. 10; Elysiian open house, Oct. 17; Trimolra party in the armory, Oct. 17; Sororian dance in the agricultural building dance hall, Oct. 24; Elysiian party in the armory, Oct. 29; Pythian party in the agricultural hall, Oct. 30; Phi Kappa Tau party in the Union building, Oct. 31; A-Theon party in East Lansing Masonic temple, Oct. 31; Eumonian party at the society house, Oct. 31; Pythian party in the Little Theatre, Oct. 31; Heronian party in the armory, Oct. 31; Alpha Gamma Rho dance in the agricultural building, Oct. 31; Erii Alphan party in the Little Theatre, Nov. 7; Trimolra open house, Nov. 13; installation of corps sponsors, gymnasium, Nov. 20; Pythian open house, Nov. 21; A-Theon party in the armory, Nov. 21; Eumonian open house, Nov. 21; Phi Delta party in the Union building, Nov. 21; Trimolra open house, Dec. 4; Elysiian open house, Dec. 5.

Agricultural division—Auditorium, Agricultural building. A convocation speaker for the engineering division, Dean Bissel has secured Mr. Robert T. Randall of Detroit. Mr. Randall was a student at this college from 1893 to 1895, and graduated from the University of Illinois in 1897. After he was graduated he was first instructor and then assistant professor in the school of engineering at Illinois and then became engaged in experimental engineering work for the Bureau of Mines and has since been engaged in various commercial and technical activities with corporations and business firms and is at the head of the firm of D. T. Randall & Co., specializing in power plant and steam in consultation and sales work.

Home economics division—The Little Theatre, Home Economics building. Miss Marian Spratt of Lansing will speak to the Home Economics students on "Methods of Sewing."

Veterinary division—Lecture room of the bacteriology building. Dr. Halliday and Dr. B. J. Killham, state veterinarian, will be the speakers.

Applied science division—The lecture room of the Chemical building. Name of the speaker will be placed on the bulletin board.

ENGINEERING DEPARTMENT ADDS NEW INSTRUCTOR

Professor A. Neator, a graduate of Pratt Institute, Brooklyn, N. Y., has been appointed head of the department of electric power transmission and has been placed in charge of laboratory work on electric circuits by G. W. Blissell, dean of engineering.

Professor Neator has been an instructor in the electrical engineering division of Cornell university for four years and has had control of the electrical laboratory for the past year. He took his undergraduate work at the University of Texas and later specialized at Cornell.

STATE HORTICULTURAL GRADUATES GET POSITIONS

J. H. Waring, a post graduate in the horticultural department last year, has recently received the appointment of professor of horticulture at the University of Maine.

Mr. Waring did his undergraduate work at Penn State, coming here for his master's degree.

Another post graduate, Mr. L. S. Morris, who attended the summer school this year, has received an appointment in the Brigham Young university, Utah. He will have charge of the horticultural department as professor of horticulture.

CHARLESTON ENTERTAINERS TO PLAY AT STATE NEWS PARTY OCT 9

TICKETS MAY BE PURCHASED IN STATE NEWS OFFICE FROM 8 TO 5 O'CLOCK BEGINNING WEDNESDAY MORNING.

ANNOUNCE R. O. T. C. CADET OFFICERS

Eleven Student Officers Try-Out For Cadet Colonel; Chosen From Artillery Division.

Louis J. Smith, of the artillery division was appointed cadet colonel of the R. O. T. C. Monday noon following the tryouts in which 11 student officers competed for the position. Smith, who hails from Muskegon, is a senior in the engineering division and a member of the Phi Kappa Tau fraternity, Tau Beta Pi and Sigma Chi.

Murray O'Neil, Lansing, of the cavalry division and R. E. Hamford, Cleveland, O., of the infantry were appointed lieutenant colonels by the military board.

In the infantry division the following officers were appointed: Major J. D. Haskins, Cleveland, O.; Captains C. C. Hill, Lansing, J. C. Rappleyea, Comstock Park, Ill.

Clyde Kille, of Charlotte, was named major of the cavalry division and the following captains were appointed: Ned Plass, Blissell; Clarence Cazier, East Lansing; W. G. Hazard, Charlevoix; E. C. Baylax, Royal Oak; and H. C. Roberts, Harrisville.

Re-Si. Kings of Flint, J. D. Miller, of Okemos, and D. M. Van Oppen, of Niles, are the new artillery majors, while the artillery captains include Carl Gehr, East Lansing; A. W. Schoonmaker, Lansing; Fred W. Mare, Jonesville; and W. F. Bosman, of Jackson.

Other junior officers will be appointed this week.

CLASS RUSH OFFICIALS NAMED FOR SATURDAY

Soph's to Have Tough Battle With Large Class of 1929.

Numerical strength will clash with organized strength in a thrilling battle next Saturday morning when the Sophomores of 1927 go into combat with the men of '28 in the annual class rush across the Red Cedar.

Superiority in numbers among the freshmen, the only factor which won for the present Sophomores last year when they met the class of 1927 is liable to spell their downfall Saturday unless they are better organized than their opponents were. The present freshmen class is easily the largest in the history of the college.

The Student Council has appointed Harry Swanson, Gerald Reynolds, and John Graham as referees to officiate at the various events. These will include the relay race, obstacle race, flag race, tug-of-war, and football rush.

George Lipke will supervise the organization of the freshmen class while E. Grimes, president of the Sophomores, has named the following men to act for his class: George Macdonald, chairman; Ward Estes, tug-of-war and relay races; Lazelle Wall, obstacle races; and Clyde Olin, flag race.

CHURCH YOUNG FOLKS TO ENTERTAIN FRESH

Women's Student Bible class and the Students' Citizenship League are planning to entertain the freshmen class with a party at the church next Saturday evening.

The main feature of the party will be the assignment of students to East Lansing homes for Sunday dinner. So great has been the demand for students to dine in the homes of the town that the young people of the church have made it a yearly feature.

The next step of campus service to be rendered by the young people's organizations will be a drive for church membership. A week will be spent in impressing on the folks of the campus the importance of becoming affiliated with the local religious organization. On Sunday, October 13, the first class of members will be taken into the church.

Since the new church is both an interdenominational and a student church, the requirements for membership are somewhat different than in most denominational churches. As in other churches, applicants may enter by confession of faith or transfer of letter. Besides these, affiliation membership is open to students here. Under this arrangement the church letter may remain in the home church but full membership can also be enjoyed here.

DEPARTMENT EDITORS ANNOUNCED FOR STAFF OF 1926 WOLVERINE

Nationally Prominent Photographer to Take Campus Views; Appointments Mailed for Individual Photographs.

Department editors on the staff of the Wolverine, Michigan State college yearbook, have been announced by Norval E. Terrell, editor-in-chief, and collection of editorial matter and art work is well under way in preparation for publishing the 1926 edition Eugene Mack is the business manager.

The department editors which have been appointed by Mr. Terrell are as follows: Ralph Kille, Jackson, as assistant editor; Gerald Montgomery, Lansing, class editor; Wayne Barkwell, Grand Rapids, organization editor; James Hendon, Lansing, athletic editor; Stanley Stafford, Saginaw, art editor; Dorothy Burrill, Kalamazoo, feature editor; Ruth Norton, Port Huron, road editor; Sylvia Schumaker, Detroit, road athletic editor; I. S. Edwards, Hubbard, humor editor.

The quality of the scenic photographs in the 1926 yearbook promises to surpass this important part of the work of any former Wolverine.

Charles Bowen, known in the world of art and advertising as "the master of the camera," will be the photographer of the campus photographs, a large being done this week and a graflex for already.

Because of the few connected with rooms are now full of Detroit through complete schedule commenced Monday those in French, Spanish and mathematics, where there from 8:00 in the afternoon hort classes have been meeting throughout the week.

Inasmuch as the laboratory work and advice is practically complete of this week, it will branches of the department.

which his services for the Wolverine were secured. His work has taken many prizes at photographer's conventions. One of his most outstanding achievements was the production of the title pages for the University of Washington annual which was judged to be the finest of its kind produced in 1922.

The Wolverine will contain the picture of each student and the first list of appointments for individual pictures has already been sent out.

A photograph contest open to students will be started soon. It will consist of three sections: scenic, action and humor. The judges will be Prof. Arnold C. Schiele, head of the college art department, Stanley Stafford, art editor, and Dorothy Burrill, feature editor. The winning photos in each department will be given a special place and the winners will receive a copy of the yearbook.

The 1926 Wolverine for the first time in the history of the college will be published in representative of all four classes instead of by the junior class as was formerly the custom.

Future editors among the lower classes can be trained and take up the work with more experience in succeeding years. Also, it often happens that there is talent in the Freshman, Sophomore, and Senior classes that should be used.

Call Freshmen a Healthy Bunch

The healthiest bunch of men and women I've ever seen.

That's the way Dr. Richard M. Olin, commissioner of health, describes the Freshman class of Michigan State college after the first few days of physical examinations.

About 650 men and half as many women have been examined. All new students are forced to take the examination.

College officials have no reason to fear epidemics as a result of the influx of new students. Dr. Olin reports, as every student examined has been entirely free from infectious disease.

Flat feet and similar defects are found occasionally, but much more seldom than was expected.

Several specialists unite in giving the students the "conquer-over" One physician inspects the head, ears, nose, mouth. Another taps the chest and investigates the throat. From him the Freshmen go to an abdominal specialist. Another doctor tests the feet and legs.

Four men members of the class of '28 are more than six-foot two inches tall and are built proportionally. There are a score of six footers.

The men are in slightly better shape than the women, on the whole," Dr. Olin said.

Some illness is expected to crop out among the Freshmen, however, as soon as a few classes have been out and medical excuses are found necessary.

CAMPUS GARAGE
ROAD SERVICE
Anywhere at Any Time
Day and Night Service
C. B. HANSON
EAST LANSING, MICH.

You May Now Secure
APPOINTMENTS
Phone 29315
Don's Campus Beauty Shoppe
AN EXPERIENCED OPERATOR IN CHARGE

THE CAMPUS GRILL
The Leading Confectionery and Restaurant in East Lansing
DID YOU EVER TRY OUR HOT MEALS?
Give Us a Trial
Quality—Fresh Home-Made Candies Every Day

Knapp Hosiery Week
This week we are featuring NIGHTINGALE silk hose at \$1.00 a pair in black and all shades, also McCULLUM full-fashioned pure silk hose at \$1.85 the pair. We are also showing Dexdale, Onyx Pointex, Merrill chifon and other leading makes, as well as sport hose.
Introducing new line of DERRYVALE LINENS, also new fall gloves, fur-trimmed dresses, sport coats, slickers and fur coats, as well as velvet, satin, velour and felt hats.
J. W. Knapp Co.

INCREASE STUDENT CROPS DEPARTMENT

Six new members to the faculty of the primary Medical at Flint, Oct. 6.

Another of the new members is K. Sales of the Michigan from Iwan.

B. W. Churchill of the Upper Peninsula reported that Chatham. He will give attractive and active teaching in the work owners and cultural school. He has taken post graduate

Others who have been assistants are: Fred Wisconsin University, director of the biology the Mississippi Agricultural station and A. Ottawa, Canada.

is reached the Knight Templar United States is loan a considerable sum to worthy this fund was Seniors but because Sophomores are favored.

was received application for loan is found no hesitancy and the loan graduation cent. Applicant from any boy as belief and as to attending college and securing an education and fit him. By having me, I will arrange

VELOUR
17 black degree
3 copying
Buy a dozen

MEETING OF STUDENTS IN FLINT

Primary Students Touch With

of the division of the primary Medical at Flint, Oct. 6.

of the division of the primary Medical at Flint, Oct. 6.

of the division of the primary Medical at Flint, Oct. 6.

of the division of the primary Medical at Flint, Oct. 6.

of the division of the primary Medical at Flint, Oct. 6.

of the division of the primary Medical at Flint, Oct. 6.

of the division of the primary Medical at Flint, Oct. 6.

of the division of the primary Medical at Flint, Oct. 6.

of the division of the primary Medical at Flint, Oct. 6.

Michigan State News

Published twice weekly during the college year by the students of the Michigan State College. Entered as second class matter at the postoffice, East Lansing, Michigan. Advertising rates furnished upon application to the Business Manager.

EDITORIAL STAFF

ROBERT H. POWELL, 263, Hermin House, City, 6495, Editor
FRED W. MAHE, 296, Hermin House, Business Manager
Levon Horton, 294, Sports Editor
John Kelly, Features
Evyn Prescott, 27th, Society Editor
Stanley Sheffield, Art

Assistant Editors

Paul H. Bugle, C. W. Kietzman, D. R. Olson, George Woodbury
T. L. Christie, K. Himselough, Harold Marsh

REPORTERS

John Hribala, C. D. Hill, J. D. McMill
Nate Ballbank, Martin Bennett, C. Kolbeck
Both Greening, Monographs

BUSINESS STAFF

Advertising G. T. Whitburn, 27, I. Rynder, 28, Vic Anderson, 28, W. Klute, 28
Circulation Max Goodwin, 29

OFFICE, BASEMENT NEW LIBRARY BUILDING
Printed at the Campus Press—Phone 26415

Editorials appearing in the MICHIGAN STATE NEWS are written by the editor in chief and his assistants, who are students. They can in no way be interpreted as representing the official viewpoint of the college, or of college officials.

SUBSCRIPTION—\$2.50 THE SCHOOL YEAR

JUNIOR ASSISTANTS

Starting this month and continuing the fall term, junior assistant editors will be acting as "managing editors" for a period of one month each.

This is the second issue to be published by T. L. Christie, under supervision. He has been making out assignments, editing copy, and assisting on the general make-up of the STATE NEWS.

In the past it has been customary to have competing assistant editors edit two issues during the winter term, one issue with supervision, and the other without. This year on account of the number of juniors who are competing for the editorship it was thought advisable to start earlier in order to give every contestant an opportunity to show his ability.

INTEREST IS THE PRINCIPAL THING

Lack of interest kills an organization about as easily as the bubonic plague wipes out humanity. Every college and every organization has men and women who are vitally interested in what they are doing, but also a great number who neither care nor worry about matters which should concern them.

One of the greatest shortcomings of college students is their lack of interest in student activities. Some who have attained

high student positions feel that since they have won the honor, they no longer need to inconvenience themselves toward serving the college.

There are others maintaining student offices who realize their duty to the extent of neglecting everything else not connected with their particular work. This means a neglect of study and of being able to get in on the rest of college life.

What Michigan State needs is an intermediate between the student who gives all, and the student who gives when it is convenient. The share of the burden falls upon the mass.

A concert conductor would have a small chance of building a reputable orchestra if his musicians played whenever it was convenient. By the same delimitation, a class president, a council president, an editor, a captain of a team is lost unless the people whom he directs are interested enough to do the natural duties expected of them.

WHAT'S THE TROUBLE FRESHMEN?

Although a great number of freshmen have shown their inclination toward taking active part in student activities, only a small number have actually begun to work.

Publications of the college have had from forty to sixty freshmen applicants for editorial or business staff, but some report that less than ten freshmen are actually serving in the way they have expressed desire to serve.

Does this mean that student activities are going to be greatly unpopular and will now wane in interest? We believe that this is only a matter of improper adjustment on the part of the freshmen. College life should consist more than just of study and play.

College gives all of us an opportunity to express our diverse abilities in a number of ways.

Those who have worked hard and earnestly for their college, though perhaps not gaining great scholastic honors, have taken something out of Michigan State which is much more valuable than a diploma having a "Cum Laude" attached.

Don't neglect your studies, but get into an activity which you are interested enough in to make the work actual play.

COLLEGE FRIENDS

Those of us who are nearing the end of our college days, look back and consider what has made our years at Michigan State complete or incomplete.

There is consolation in being able to say: I haven't distinguished myself on the athletic field, in the class room, in student activities, but then I have more friends than anybody else.

Friendship is something that extends beyond one's roommate, beyond one's society members. Very often two students of different society affiliation are to each other like brothers.

College is a golden opportunity to make friends. They make us realize our own pettiness, and in that way draw out our bigness. There is hardly ever a graduate who feels he has made just all the friendships he is capable of making.

There are regrets such as "I might have befriended that fellow and he'd be in college now", "I always wanted to know Jim, but I never had the time".

Life may be a series of regrets in its pessimism, but remember the more loyal friends you have gathered unto you, the less regrets there will be in your life.

The Book Shelf

Edited by Dorothy Barrett

A REVIEW

"Copy 1925," Published by D. Appleton & Co.

This very interesting book is made up of a collection of selected stories, plays, poems and essays, which were written by extension students from Columbia University. These have all been published at one time or another.

"The Mouse," a short story, by May Freud Dickenson.

It is cleverly written, its themes being quite eccentric. One of the photographs, "Love on the Rio Grande," was produced by the Independent Pictures Corporation.

On the whole this is just the type of book the college student would enjoy. Each theme is novel in subject matter, and can be read easily in one's spare moments.

Heaven H. Hall, now a professor at Columbia University, was among those who helped edit "Copy 1925." Miss Hall spent one year at Michigan State College, from about 1907 to 1908. Her home is in Lansing.

The author's best known books are "The Quest" and "The Labyrinth." "The Quest" is probably her best known book, and it should be particularly interesting to M. S. C. students, when they know that the background of the book is woven around our own campus; this is an extra incentive for reading the book. Miss Hall ranks very high among the present day short story writers. Many of her short stories are published in current magazines.

A FEW BEST SELLERS

Fiction
"Soundings," A. Hamilton Gibbs.
"Fables," Walter J. Mollenburg.
"Glorious Apollo," E. A. Barrington.
"Caravan," John Galsworthy.
"Green Bush," John T. Frederick.
The setting of this last book is in Michigan.

Non-Fiction

"Anatole France Himself," Jean Jacques Rousseau, and "John Keats," Amy Lowell.

This column, "The Book Shelf," aims to familiarize the students of Michigan State College in a wide and general way with literary happenings of the present day. We also wish it to bring into closer connection with our general student body the people of literary ability who are among us, and those who have left us.

Do you like this idea? This style won't be followed every time, variety is wanted. If you like this tell us so, and if you don't like the style of this column, we will be glad to suit you. All suggestions and contributions are more than welcome. This column is yours, let's try and make this new department of our paper a success. Watch the Book Shelf grow.

BAND MAKES FINE SHOWING AT ANN ARBOR

Formation of Letters "M. S. C." Very Impressive.

True to their reputation for drill snap and military precision, fifty members of the Michigan State college military band triumphed over the M. I. S. and Blue outfit in the exhibition drill staged between the halves at the annual football fray at Ann Arbor last Saturday.

The marching and playing of the state aggregation was conceded to be the "best ever" by most of the spectators and the drill left little to be desired in the way of pep and impressive demonstration. The University band did very well considering the time that was spent in preparation of such a large outfit but the omission of the formation of the block "M" was quite noticeable.

Forming on the forty yard line at the end of the first half the State band swung into action to the strains of a stirring march and paraded to the end of the field where two right turns were executed that brought the khaki clad organization into full view in the center of Ferry Field. The music stopped, the drums were silent while the band snapped into the impressive formation of the letters "M."

White in this formation the musicians faced the State reading section and rendered the "Alma Mater" under the direction of Professor Clark. The march was then resumed and marching formation reestablished after executing a metronomic countermarch and a straight counter-march the outfit was brought to a halt in front of the State section in the accompaniment of reading appliances from the local "readers".

The band enjoyed fine accommodations during their short visit to the University City. Dinner was served at the Michigan Union and smoke prepared by the Michigan band.

GET SNAPSHOTS OF THE BIG CLASS RUSH

Camera hounds! Here is your chance to take some really interesting pictures—worth while pictures. A splendid opportunity to try out the new cameras.

Let's see who can get the best ones. Chance of a life time, where once you will be juniors next year. Send all pictures to the Snapshot editor at the Wolverine office. Let's see!

SOMETHING NEW

A Chartered Bus Service

New 20 Passenger Sedan Type Busses

Wonderfully convenient for college men and women for attending out of town sporting events, parties and other functions. Make your party. Busses are for hire by day, hour or trip. We go anywhere you want to go at the time you want to go and return at the time you want.

MACKAY CAB COMPANY

715 River Street

What's New in Clothes for Fall

See our Stratford fall model—and you will have the answer. Our new and uncommonly attractive—interpretations of the changed styles—styles that bring well dressed men back to the Lewis Store season after season. Rich and serviceable new weaves from New England and the British Isles. Refreshingly new colors—very striking. Custom tailored throughout.

STRATFORD CLOTHES

\$50-\$75

HOOT MON BLUE CHEVIOT

\$45-\$55

Lewis Brothers, Inc

distributors of Stratford Clothes

1115 S. Washington Ave.
It costs no more to buy the best at Lewis Bros.

DANCING
At The ARCADIA
To JOHNNY OTT
And His Orchestra
On FRI and SAT NIGHTS
Is Ideal Entertainment
LEARN THE CHARLIE HOGG
IT'S COMING TO THE COLLEGE
FRIDAY, OCT 3
Join the next Beginner's Class Tuesday, Oct 6, 7 p.m. Results guaranteed.
Advanced Class now open. Join any time. Instruction given in the Charleston, Miss. Waite, Et. A. G. WESSON
LEARN TO DANCE IN THE BALL ROOM
DANCING

It's A Pleonastic Pen

the over-size gold nib generously tipped with iridium
The unconditional and perpetual guarantee of service given with each Conklin Endura puts more words into a fountain pen than anybody will live to write.
Conklin Endura, at \$5 and \$7, in red, black, mahogany; long or short; clip or ring cap. A wide variety of other Conklin pens and pencils, in rubber and all metals—priced as low as \$1.00 for pencils and \$2.50 for pens. Conklin quality in every one.
THE CONKLIN PEN MFG. CO.
TOLEDO, OHIO
Chicago and Philadelphia Branches

...will have two persons of Ben Fried and Bruce Gregory, other two men to protest will in tomorrow's...
...Molenda at full...
...Fuller at the remain...
...Both Fuller...
...will be getting their first...
...variety work, and for...
...be the first contest he...
...once leaving Detroit...
...high two years ago...
...Sonny Babcock will...
...service in the Michi...

TISTS IN MCHIGAN LINEUP

...nding basketball stars...
...school days will be...
...row's contest, and both...
...rming for Michigan...
...baum of Muskegon and...
...Melenda of Detroit...
...high are the pair...
...was an All-American...
...enter in basketball, hav...
...en at the close of the...
...tournament in Chi...
...24 Melenda was an all...
...ward. Neither played...
...all-fresh team last...
...are now listed as reg...
...ophomore ranks.

...all-state choices in...
...eral Electric in high school, and...
...pioneered efforts tomorrow...
...fields of their first attempts at...
...Today G-work should make a fea...
...co-operat...
...presence in the tilt.

ine Typewriter Company

...A new ac...
...tachment...
...electric...
...fields...
...Ask for a Second Hand Machine...
...hard makes. Prices from...
...\$25.00 to \$65.00

...Rental Rates \$3.00...
...or 3 months for \$8.00...
...Free Delivery

HARFORD
Optometrist
At Variety & Gift Shop

BR...
The Hat Store of the
225 S. Washington Ave.
Open Saturday Night

THE PLACE TO EAT-----
The Wolverine Lunch
LANSING, MICHIGAN
OPEN DAY and NIGHT

STUDENTS COME
To Eat at
M. S. C. RESTAURANT
OPEN DAY AND NIGHT

BLUE ROSE TOILET ARTICLES
BRILLIANTINE CREAMS
FACE POWDER ROUGE
MORSE'S BULK CHOCOLATES
TOOTH PASTE OF ALL KINDS
TOOTH BRUSHES
MARSHMALLS 39c

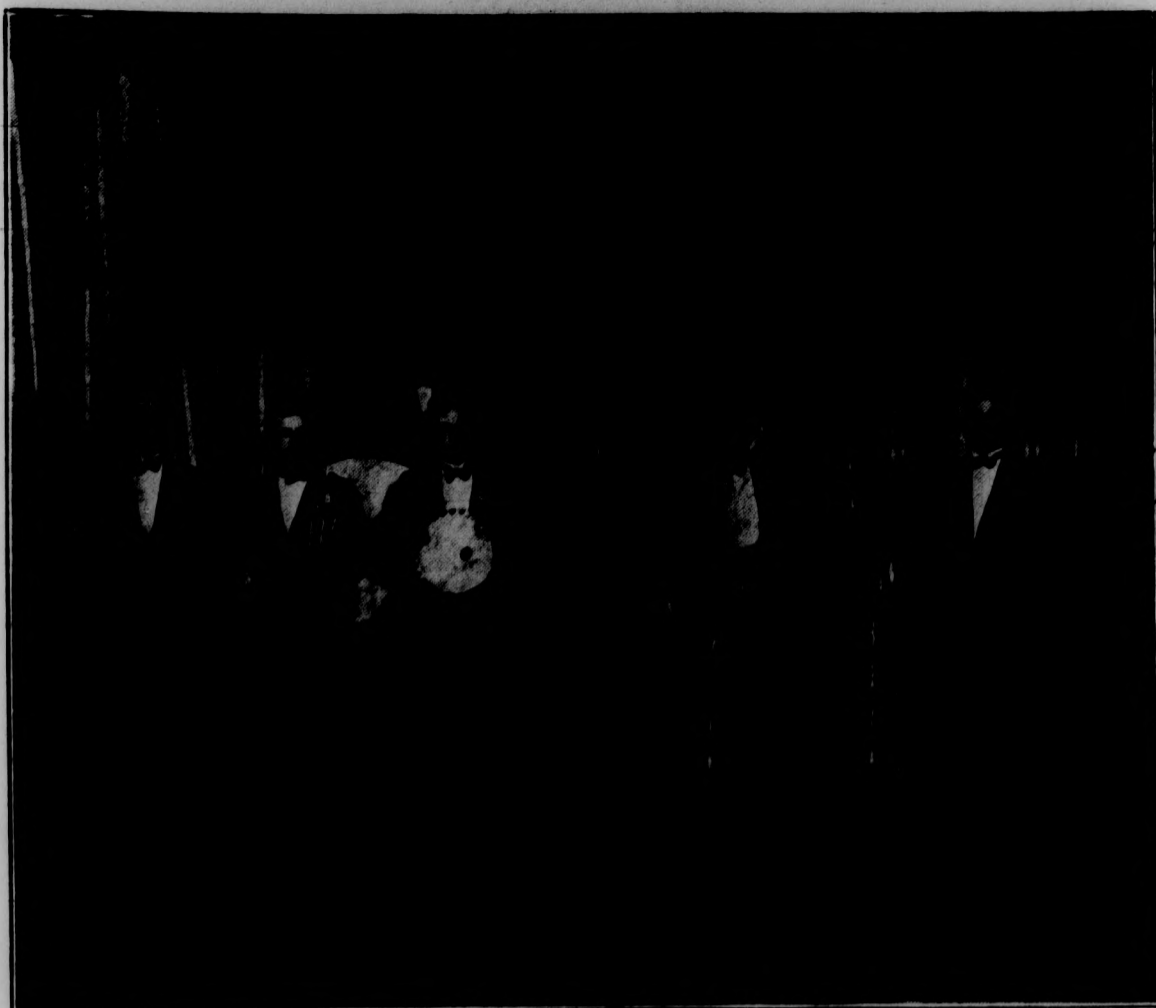
College Drug Co.
Rexall Store

WOMEN'S COUNCIL

A tea in the near future is being planned for the new Michigan State Council, according to Dorothy Wood, recently elected president of the Women's Self Government association. Miss McWood states that the present problem of the association is getting things in working order for the present year.

The president of the girls' dormitory who have been elected under W. B. G. A.'s supervision are as follows: Women's building, Mabel Volder; Yelder house, Dorothy Beal; college residence, Claire Wal-

The Charleston Entertainers Who Will Play



STUDENT-FACULTY BAND FOR FRIENDSHIP CANVASS

Make Personal Calls to College Freshmen; Faculty Enjoys Canvass.

Student Y. M. C. A. forces together with many college faculty members made a "Friendship Canvass" last Tuesday evening, visiting every Freshman residing in East Lansing.

It was the purpose of the "Y" in this campaign to create a warm spirit of friendship between the church and the school and the class of '25 to cheer the discouraged and encourage the faltering and to make the freshmen feel that the Peoples Church is their church home in which they are always welcome.

The men working in the canvass were sent out in teams of two, an upper class student with each college professor. There were more than 25 such teams and they covered the entire town in one evening.

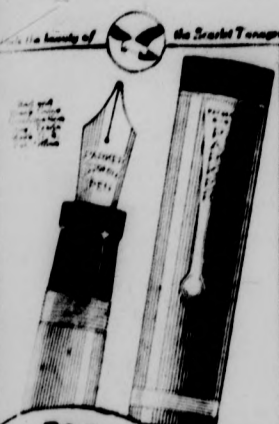
Among the faculty members who helped were college heads as John Parker, Dr. K. A. Parker and Prof. W. W. Johnson. Through the friendly way in which school work, these school heads and many others were eager to help in such work as this.

FOR Next Summer

How Are You Going to Earn Next Year's College Expense?

The International Magazine Company is now offering a special plan for earning money during the summer months. This plan is known as the "International Magazine Plan" and it offers a unique opportunity for students to earn money during the summer months. The plan involves working for the company during the summer months and receiving a salary for the work done. The salary is based on the amount of work done and is paid in weekly installments. This plan is a great way for students to earn money during the summer months and to gain valuable experience in the magazine industry.

INTERNATIONAL MAGAZINE COMPANY
Manager, International Magazine Company
12 West 44th Street
New York City

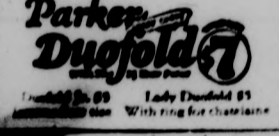


Its Black & Red Combination are the Inter-collegiate Colors

THIS classic pen with the Hand-size grip and Over-size nib capacity has become so thoroughly the Inter-collegiate pen that Parker Duofold's black and red combination have also become the Inter-collegiate colors, as it were. Its style of writing can distinguish a 25-year point.

This beauty is waiting you at all good pen counters.

THE PARKER PEN COMPANY
Factory and General Office
JACKSONVILLE, W.VA.



bridge, Strong, Irene Roth, Tappan, Gladys Clemmons, Hillcrest, Maxine Moore, Abner hall, Alice Charles.

HORT BUILDING TO BE COMPLETE THIS WEEK, SAYS PROF. GARDNER

Foremost among the building operations on the campus is the new Horticultural building, which is nearing completion. According to Prof. J. H. Gardner, work will be completed early this week.

The heating plant and other like equipment was installed some time ago. All that remains to be put in place at this time is some of the apparatus for the research laboratories and a few other incidental finishing jobs. This apparatus is on the way and will be installed as the work of transporting it over to the Hort building and setting it up is being done this week.

Already in Use
Because of the fact that class rooms are now fully equipped, a complete schedule of classes was commenced Monday. This includes those in French, Spanish, English and mathematics, which hold away there from 8:00 in the morning until 5:00 in the afternoon. The regular hort classes have met in the building throughout this present term inasmuch as the laboratories for research work and advanced study will be practically complete by the end of this week. It will mean that all branches of the department will be in working order in a very short while.

Plan Open House
In order to partially inform the public as to what a fine building they now have the hort department is planning on holding an "open house" in the near future. This is to be held some evening at which time the building will be thrown open for the inspection of students, faculty and any others who may be interested.

Prof. Gardner also states that evidently the equipment and general conditions of the department were appealing to students because of the fact that their enrollment was very large this year. Likewise three new courses which were started this year

ATTENTION STUDENTS
The Lansing Cafe
Lansing's Most Up-to-Date Restaurant
203 South Washington Avenue

Phone 54 679 223 M. A. C. Avenue
CAMPUS GARAGE
ROAD SERVICE
Anywhere at Any Time
Day and Night Service
C. E. HANSON EAST LANSING, MICH.

You May Now Secure
APPOINTMENTS
Phone 29315
Don's Campus Beauty Shoppe
AN EXPERIENCED OPERATOR IN CHARGE

THE CAMPUS GRILL
The Leading Confectionery and Restaurant in East Lansing
DID YOU EVER TRY OUR HOT MEALS?
Give Us a Trial
Quality—Fresh Home-Made Candies Every Day

Knapp Hosiery Week
This week we are featuring NIGHTINGALE silk hose at \$1.00 a pair in black and all shades, also McCULLUM full-fashioned pure silk hose at \$1.85 the pair. We are also showing Dexdale, Onyx Pointex, Merrill chiffon and other leading makes, as well as sport hose.
Introducing new line of DERRYVALE LINENS, also new fall gloves, fur-trimmed dresses, sport coats, slickers and fur coats, as well as a velvet, satin, velour and felt hats.
J. W. Knapp Co.

INCREASE STAFF OF CROPS DEPARTMENT

Six new members have been added to the faculty of the Farm Crops division as graduate assistants. One of these, Charles Lewis, graduated last June from M. A. C. and is engaged in sugar beet breeding for the government and the Iowa farm crops division.

Another of the new members is Bjorn Hundak, who has come to Michigan from Iowamark to continue his studies in this type of work and to work as an assistant.

B. W. Churchill was chosen from the Upper Peninsula sub-station at Chatham. He will give seven months of each year to experimental work here and will spend the remaining five teaching in the Menominee Agricultural school. He is a graduate of the Kansas Agricultural college and has taken post graduate work at this institution.

Others who have been appointed as assistants are: Fred Kaufman, of Wisconsin University; C. E. Anders, director of the biology sub-station at the Mississippi Agricultural experiment station; and A. R. Marshall, of Ottawa, Canada.

When in Need of An Appointment for Your Hair
PHONE 2341
The New Number of the
JANIE LINCOLN BEAUTY SHOP
(Over Campus Grill)

Freshmen and Students
Bring Your Clothes for Dry Cleaning, Pressing and Repairing to
SCHRAM THE TAILOR

YOU CAN SECURE THAT
Watch or Diamond
On dignified and easy credit terms at
Daniels Jewelry Co.
207 S. Washington Avenue
Next to Strand Theater

Come to the
CHARLESTON PARTY
THE STATE NEWS
Invites You
AT THE GYM
Get Tickets from Members of Both Staffs
\$1.50 8:00 P. M.

The largest selling quality pencil in the world
17 black degrees
3 copying
Superior in quality, the world-famous
VENUS PENCILS
give best service and longest wear.
Buy a dozen
Exp. with you for 10c
Exp. with you for 1.25
Exp. with you for 1.50
Exp. with you for 1.75
Exp. with you for 2.00
Exp. with you for 2.25
Exp. with you for 2.50
Exp. with you for 2.75
Exp. with you for 3.00
Exp. with you for 3.25
Exp. with you for 3.50
Exp. with you for 3.75
Exp. with you for 4.00
Exp. with you for 4.25
Exp. with you for 4.50
Exp. with you for 4.75
Exp. with you for 5.00
Exp. with you for 5.25
Exp. with you for 5.50
Exp. with you for 5.75
Exp. with you for 6.00
Exp. with you for 6.25
Exp. with you for 6.50
Exp. with you for 6.75
Exp. with you for 7.00
Exp. with you for 7.25
Exp. with you for 7.50
Exp. with you for 7.75
Exp. with you for 8.00
Exp. with you for 8.25
Exp. with you for 8.50
Exp. with you for 8.75
Exp. with you for 9.00
Exp. with you for 9.25
Exp. with you for 9.50
Exp. with you for 9.75
Exp. with you for 10.00
Exp. with you for 10.25
Exp. with you for 10.50
Exp. with you for 10.75
Exp. with you for 11.00
Exp. with you for 11.25
Exp. with you for 11.50
Exp. with you for 11.75
Exp. with you for 12.00
Exp. with you for 12.25
Exp. with you for 12.50
Exp. with you for 12.75
Exp. with you for 13.00
Exp. with you for 13.25
Exp. with you for 13.50
Exp. with you for 13.75
Exp. with you for 14.00
Exp. with you for 14.25
Exp. with you for 14.50
Exp. with you for 14.75
Exp. with you for 15.00
Exp. with you for 15.25
Exp. with you for 15.50
Exp. with you for 15.75
Exp. with you for 16.00
Exp. with you for 16.25
Exp. with you for 16.50
Exp. with you for 16.75
Exp. with you for 17.00
Exp. with you for 17.25
Exp. with you for 17.50
Exp. with you for 17.75
Exp. with you for 18.00
Exp. with you for 18.25
Exp. with you for 18.50
Exp. with you for 18.75
Exp. with you for 19.00
Exp. with you for 19.25
Exp. with you for 19.50
Exp. with you for 19.75
Exp. with you for 20.00
Exp. with you for 20.25
Exp. with you for 20.50
Exp. with you for 20.75
Exp. with you for 21.00
Exp. with you for 21.25
Exp. with you for 21.50
Exp. with you for 21.75
Exp. with you for 22.00
Exp. with you for 22.25
Exp. with you for 22.50
Exp. with you for 22.75
Exp. with you for 23.00
Exp. with you for 23.25
Exp. with you for 23.50
Exp. with you for 23.75
Exp. with you for 24.00
Exp. with you for 24.25
Exp. with you for 24.50
Exp. with you for 24.75
Exp. with you for 25.00
Exp. with you for 25.25
Exp. with you for 25.50
Exp. with you for 25.75
Exp. with you for 26.00
Exp. with you for 26.25
Exp. with you for 26.50
Exp. with you for 26.75
Exp. with you for 27.00
Exp. with you for 27.25
Exp. with you for 27.50
Exp. with you for 27.75
Exp. with you for 28.00
Exp. with you for 28.25
Exp. with you for 28.50
Exp. with you for 28.75
Exp. with you for 29.00
Exp. with you for 29.25
Exp. with you for 29.50
Exp. with you for 29.75
Exp. with you for 30.00
Exp. with you for 30.25
Exp. with you for 30.50
Exp. with you for 30.75
Exp. with you for 31.00
Exp. with you for 31.25
Exp. with you for 31.50
Exp. with you for 31.75
Exp. with you for 32.00
Exp. with you for 32.25
Exp. with you for 32.50
Exp. with you for 32.75
Exp. with you for 33.00
Exp. with you for 33.25
Exp. with you for 33.50
Exp. with you for 33.75
Exp. with you for 34.00
Exp. with you for 34.25
Exp. with you for 34.50
Exp. with you for 34.75
Exp. with you for 35.00
Exp. with you for 35.25
Exp. with you for 35.50
Exp. with you for 35.75
Exp. with you for 36.00
Exp. with you for 36.25
Exp. with you for 36.50
Exp. with you for 36.75
Exp. with you for 37.00
Exp. with you for 37.25
Exp. with you for 37.50
Exp. with you for 37.75
Exp. with you for 38.00
Exp. with you for 38.25
Exp. with you for 38.50
Exp. with you for 38.75
Exp. with you for 39.00
Exp. with you for 39.25
Exp. with you for 39.50
Exp. with you for 39.75
Exp. with you for 40.00
Exp. with you for 40.25
Exp. with you for 40.50
Exp. with you for 40.75
Exp. with you for 41.00
Exp. with you for 41.25
Exp. with you for 41.50
Exp. with you for 41.75
Exp. with you for 42.00
Exp. with you for 42.25
Exp. with you for 42.50
Exp. with you for 42.75
Exp. with you for 43.00
Exp. with you for 43.25
Exp. with you for 43.50
Exp. with you for 43.75
Exp. with you for 44.00
Exp. with you for 44.25
Exp. with you for 44.50
Exp. with you for 44.75
Exp. with you for 45.00
Exp. with you for 45.25
Exp. with you for 45.50
Exp. with you for 45.75
Exp. with you for 46.00
Exp. with you for 46.25
Exp. with you for 46.50
Exp. with you for 46.75
Exp. with you for 47.00
Exp. with you for 47.25
Exp. with you for 47.50
Exp. with you for 47.75
Exp. with you for 48.00
Exp. with you for 48.25
Exp. with you for 48.50
Exp. with you for 48.75
Exp. with you for 49.00
Exp. with you for 49.25
Exp. with you for 49.50
Exp. with you for 49.75
Exp. with you for 50.00
Exp. with you for 50.25
Exp. with you for 50.50
Exp. with you for 50.75
Exp. with you for 51.00
Exp. with you for 51.25
Exp. with you for 51.50
Exp. with you for 51.75
Exp. with you for 52.00
Exp. with you for 52.25
Exp. with you for 52.50
Exp. with you for 52.75
Exp. with you for 53.00
Exp. with you for 53.25
Exp. with you for 53.50
Exp. with you for 53.75
Exp. with you for 54.00
Exp. with you for 54.25
Exp. with you for 54.50
Exp. with you for 54.75
Exp. with you for 55.00
Exp. with you for 55.25
Exp. with you for 55.50
Exp. with you for 55.75
Exp. with you for 56.00
Exp. with you for 56.25
Exp. with you for 56.50
Exp. with you for 56.75
Exp. with you for 57.00
Exp. with you for 57.25
Exp. with you for 57.50
Exp. with you for 57.75
Exp. with you for 58.00
Exp. with you for 58.25
Exp. with you for 58.50
Exp. with you for 58.75
Exp. with you for 59.00
Exp. with you for 59.25
Exp. with you for 59.50
Exp. with you for 59.75
Exp. with you for 60.00
Exp. with you for 60.25
Exp. with you for 60.50
Exp. with you for 60.75
Exp. with you for 61.00
Exp. with you for 61.25
Exp. with you for 61.50
Exp. with you for 61.75
Exp. with you for 62.00
Exp. with you for 62.25
Exp. with you for 62.50
Exp. with you for 62.75
Exp. with you for 63.00
Exp. with you for 63.25
Exp. with you for 63.50
Exp. with you for 63.75
Exp. with you for 64.00
Exp. with you for 64.25
Exp. with you for 64.50
Exp. with you for 64.75
Exp. with you for 65.00
Exp. with you for 65.25
Exp. with you for 65.50
Exp. with you for 65.75
Exp. with you for 66.00
Exp. with you for 66.25
Exp. with you for 66.50
Exp. with you for 66.75
Exp. with you for 67.00
Exp. with you for 67.25
Exp. with you for 67.50
Exp. with you for 67.75
Exp. with you for 68.00
Exp. with you for 68.25
Exp. with you for 68.50
Exp. with you for 68.75
Exp. with you for 69.00
Exp. with you for 69.25
Exp. with you for 69.50
Exp. with you for 69.75
Exp. with you for 70.00
Exp. with you for 70.25
Exp. with you for 70.50
Exp. with you for 70.75
Exp. with you for 71.00
Exp. with you for 71.25
Exp. with you for 71.50
Exp. with you for 71.75
Exp. with you for 72.00
Exp. with you for 72.25
Exp. with you for 72.50
Exp. with you for 72.75
Exp. with you for 73.00
Exp. with you for 73.25
Exp. with you for 73.50
Exp. with you for 73.75
Exp. with you for 74.00
Exp. with you for 74.25
Exp. with you for 74.50
Exp. with you for 74.75
Exp. with you for 75.00
Exp. with you for 75.25
Exp. with you for 75.50
Exp. with you for 75.75
Exp. with you for 76.00
Exp. with you for 76.25
Exp. with you for 76.50
Exp. with you for 76.75
Exp. with you for 77.00
Exp. with you for 77.25
Exp. with you for 77.50
Exp. with you for 77.75
Exp. with you for 78.00
Exp. with you for 78.25
Exp. with you for 78.50
Exp. with you for 78.75
Exp. with you for 79.00
Exp. with you for 79.25
Exp. with you for 79.50
Exp. with you for 79.75
Exp. with you for 80.00
Exp. with you for 80.25
Exp. with you for 80.50
Exp. with you for 80.75
Exp. with you for 81.00
Exp. with you for 81.25
Exp. with you for 81.50
Exp. with you for 81.75
Exp. with you for 82.00
Exp. with you for 82.25
Exp. with you for 82.50
Exp. with you for 82.75
Exp. with you for 83.00
Exp. with you for 83.25
Exp. with you for 83.50
Exp. with you for 83.75
Exp. with you for 84.00
Exp. with you for 84.25
Exp. with you for 84.50
Exp. with you for 84.75
Exp. with you for 85.00
Exp. with you for 85.25
Exp. with you for 85.50
Exp. with you for 85.75
Exp. with you for 86.00
Exp. with you for 86.25
Exp. with you for 86.50
Exp. with you for 86.75
Exp. with you for 87.00
Exp. with you for 87.25
Exp. with you for 87.50
Exp. with you for 87.75
Exp. with you for 88.00
Exp. with you for 88.25
Exp. with you for 88.50
Exp. with you for 88.75
Exp. with you for 89.00
Exp. with you for 89.25
Exp. with you for 89.50
Exp. with you for 89.75
Exp. with you for 90.00
Exp. with you for 90.25
Exp. with you for 90.50
Exp. with you for 90.75
Exp. with you for 91.00
Exp. with you for 91.25
Exp. with you for 91.50
Exp. with you for 91.75
Exp. with you for 92.00
Exp. with you for 92.25
Exp. with you for 92.50
Exp. with you for 92.75
Exp. with you for 93.00
Exp. with you for 93.25
Exp. with you for 93.50
Exp. with you for 93.75
Exp. with you for 94.00
Exp. with you for 94.25
Exp. with you for 94.50
Exp. with you for 94.75
Exp. with you for 95.00
Exp. with you for 95.25
Exp. with you for 95.50
Exp. with you for 95.75
Exp. with you for 96.00
Exp. with you for 96.25
Exp. with you for 96.50
Exp. with you for 96.75
Exp. with you for 97.00
Exp. with you for 97.25
Exp. with you for 97.50
Exp. with you for 97.75
Exp. with you for 98.00
Exp. with you for 98.25
Exp. with you for 98.50
Exp. with you for 98.75
Exp. with you for 99.00
Exp. with you for 99.25
Exp. with you for 99.50
Exp. with you for 99.75
Exp. with you for 100.00

L. E. HORTON
Sports Editor

A PAGE OF SPORTS

ASSISTANTS

J. Dale Merrill
C. Koloski

STATE OVERWHELMED BY BRILLIANT PASSING ATTACK OF YOSTMEN, 39-0

STATE'S ENDS AND SECONDARY DEFENSE UNABLE TO COPE WITH ATTACK

Young Refuses to Rely Upon Defensive Game In Order That the Count Might Be Kept Down.

Michigan State college invaded the stronghold of the University of Michigan last Saturday and once more failed to realize its age-old ambition to defeat the Wolverines when the Michigan team started the most optimistic of Maize and Blue fans and paralyzed the most pessimistic of the East Lansing fans with one of the most brilliant passing attacks ever launched on Ferry field and swept over the Michigan State team, 39 to 0.

Some skepticism was prevalent before the game as to the capability of the Michigan backs. Before the first period ended the matter was definitely settled by the run by Friedman and the assistance he was accorded in making his advance down field. Michigan fans recalled a bitter experience last year when Red Grange, Illinois flash, threaded his way through the Michigan team behind the superb interference of McElvain, Hall and Britton, and smiled when future encounters came to their minds. That smile became fixed when Benny Friedman and Dutch Stannman dispatched pass after pass with unerring accuracy into the hands of Oosterbaan and Grube. Beautiful runnings by Sammy Babcock and Louis Gilbert behind expert interference later in the game only further accentuated the versatility of the Michigan backs.

Individual Play of Wolverines Sparkled

From the standpoint of the State eleven, Michigan swept the Green and White off their feet with a completeness which could not be questioned. The State backs were at a loss to function as a secondary defense. Mechanically they were functioning in the shape as far as actual moves were concerned. However, the individual superiority of the Wolverines completely overshadowed the vain attempts of the inferior State backs and ends. The marvelous performance of Grube and Ooster-

baan was beyond opposition. The clockwork interference accorded the Michigan backs by 190-pound guards was too much for State tacklers to toss aside. On paper, the State team was all that might be asked, but they were at a loss to combat the clever individual play of the Michigan men. Yet, in justice to Coach Young's team, it must be said that had State not been red with the unstinted desire to win at any risk and passed with such utter desperation and recklessness, the score might have been much smaller. The East Lansing team failed to display any tendency to back up the flurry of passes which they vainly heaved in quest of the Michigan goal in the third quarter. The Wolverines were on the alert and took advantage of the weakness and completed the humiliation of the Young-coached outfit with an overwhelming score.

State Had Chances to Score

Michigan State had several good chances to score, but lacked the drive to put a tally over the line. A pretty run by Leslie Fouts for 80 yards and an offside penalty for Michigan gave State an excellent opportunity to score, but on the fourth down a pass was grounded over the Michigan goal for a touchback. Another threat was halted in its infancy when on the Michigan 22-yard line Gilbert intercepted a shoot from Ruhl's hand. More than once intercepted passes halted the march of the State team and smothered the efforts of the Green and White in their attempts to score.

Michigan Scores Early

The Michigan team took over the reins early in the fracas when Benny Friedman, behind his shock troops, worked his way 62 yards through the Michigan State team for the first tally. Tackler after tackler was taken out of the play to clear Friedman's path for the run. Michigan shortly afterward made another bid for a touchdown, but the fight of the State line stayed the attack and Smith punted from behind his own 10-yard line.

and play after Friedman took Smith's boot, a pass, Friedman to Gregory, netted 25 yards and Gregory went the remainder of the distance to the goal.

The shower of passes by the Michigan State team put the Michigan team on the defensive during the second quarter. In the third Oosterbaan came to the front by taking a seemingly impossible pass from Louis Gilbert, side-stepping Leslie Fouts and tore 28 yards for a touchdown. George Babcock netted the

Four Captains in Grid Team



"Baldy" Kuebler, baseball; "Snoopy" Hackett, basketball; Don Hawkins, football; Bohm Grim, track.

fourth Michigan tally when he took a State pass meant for Grim and raced 65 yards to the tape. Another wizard catch by Oosterbaan on a pass from Friedman and a spectacular run of 59 yards brought the Michigan count up to 33.

Gilbert finished the scoring a few moments before the third quarter ended when he snatched a State pass and traveled the distance to the Green and White chalk line.

The fourth period was slowed up by a parade of substitutes by both teams. Both coaches availed themselves of the opportunity of trying out a good deal of reserve material, with the issue decided.

The teams fought on practically even terms from tackle to tackle. Captain Hawkins and Spiekerman played excellent football for the State team. Edwards, Babcock and Hawkins were the bright lights in the university line. Eberbach, sophomore center on the State team, who replaced Vogel, played a whale of a game while he was in the fracas, as did John Garver, who displaced Rummell at guard. Grim, the State speed merchant, shows promise as an end by virtue of his showing.

Fouts Shiny

In the State backfield, the diminutive Leslie Fouts was the satellite. "Les" led the State team in their mad passing bet like a veteran and ran cleverly with the ball. All fans were with him on his long run to the Michigan goal. With the fleet Oosterbaan on his heels, he made a vain attempt to outrun the long-legged Wolverine, but was dragged down before he made the distance. Ruhl also played a good game, both on defense and in passing for the Green and White.

The Michigan backfield functioned far better than the fondest hopes of the Ann Arbor enthusiasts. Friedman passed up to expectation and showed himself to be a clever open-field runner. Gilbert and Babcock showed real class in carrying the ball with beautiful runs through the State team. Gilbert and Fuller handled the kicking admirably while Molenda did a good job at fullback.

Passes!

State College	Michigan
Drew	L. E. Grube
Hawkins	L. F. Hawkins
Rummell	L. G. Lovette
Vogel	C. Thisted
Hackett	R. G. Edwards
Spiekerman	R. E. Babcock
Lyman	K. E. Flora
Fouts	Q. H. Friedman
Smith	L. H. Fuller
Boehringer	K. H. Gregory
Van Buren	F. H. Molenda

Score by periods—

State College	0 0 0 0—0
Michigan	13 0 26 6—39

Touchdowns—Friedman, Gregory, Oosterbaan, G. Babcock, Gilbert. Points after touchdowns—Fuller, Gilbert 2, Referees—H. K. Hackett (West Point), Umpire—W. S. Kennedy (Chicago), Field Judge—H. M. Nelly (West Point), Head linesman—E. Gardner (Illinois). Substitutions—Ruhl for Boehringer, Gilbert for Fuller, Stannman for Molenda, Oosterbaan for Edmonds, Dewey for Lovette, Oude for Grimell, Boehringer for Van Buren, Sam Babcock for Gregory, Garver for Rummell, Puckelmann for Friedman, Raer for Dewey, Valentine for Hackett, Edmonds for Drew, Nickerson for George Babcock, Anderson for Edmonds, McIntyre for Hawkins, Walter Weber for Stannman, Palmer for Flora.

Co-ed Athletics

Special swimming classes for women begin today. The hours will be as follows: 6 to 7, employees of the campus offices; 7 to 8, life saving classes; 8 to 9, women and wives of the faculty, also alumnae.

Life Saving

All girls who have passed their life saving tests or desire to do so, are requested to hand in their names to the department.

The swimming requirements for women to pass before the end of the sophomore year are as follows: Motionless back float for 60 seconds.

Tread water for 60 seconds.

Plunge from side of pool.

Plunge from dive from board.

Swim each of the following strokes, correct form, for 30 yards: Back, side, and crawl.

If any of the above requirements have not been met at the close of the sophomore year, a grade of incomplete will be given, which will stand until removed.

The next meeting of the life saving

clubs will be held in the gymnasium at 6 o'clock Wednesday night, October 7.

More star athletes join fresh ranks.

Added to the list of outstanding state athletes who are matriculating here this year are three stars, who have only made their appearance in the past ten days.

They are McGill of Alpena Central, Orner of the old Bay City Eastern high athletic machines, which existed in the days of the pre-consolidation of Bay City Eastern and Western, and Richter, of Bay City Central. Orner came to the State campus from Albion college, and has played two years of basketball with Bay City Junior college since leaving high school. He is a very capable court player and is also used in football and baseball.

McGill was conceded to be one of northern Michigan's best prep school basketball guards, while playing for Alpena Central, and Richter is a product of "Chief" Garland Nevitt, the well-known Bay City Central mentor. He performs in the three major sports.

Co-eds fall term sports Monday.

Last Monday physical "ed" began in earnest for the co-eds.

This last week has been spent in classifying them, assigning lockers, and checking up on their equipment.

This delay in starting was caused by the unusually large number of co-eds who are attending M. S. C. this year and so much more time was spent in this phase of the work than was intended.

Faculty folk club opens year Friday.

Faculty folk club of Michigan State college will hold its opening reception of the season Friday afternoon, Oct. 9, from 3 to 5 o'clock in the Little Theatre of the Home Economics building.

Mrs. R. K. Stewart will be chairman of this committee in charge and assisting her will be Mrs. T. E. Johnson, Mrs. A. J. Clark, Mrs. Merton Clark, Mrs. Henry Dirks, Mrs. A. H. Nelson, Mrs. Chester Allen, Mrs. C. F. Dunford and Mrs. G. W. Hobbs.

Sees Victory Even in Defeat

Michigan State college football team bowed in defeat to the University of Michigan grid artists Saturday but the hearts of East Lansingites are beating joyfully still. For did not our band outflow the Michigan who jammers and did not our cheering section outflow the Ann Arborites?

From the moment that the State band came on the field the Maize and Blue cohorts yielded the beating victory to them. They marched down Ferry Field with all the precision of a trained regiment and put all kinds of pep in their cause. While the Michigan band was very good, it could not compete with the State aggregation.

Our cheer leading was the best that had ever appeared upon Ferry field. Larry Skilinger and his three assistant cheer exhorters, attired in their natty new green and white uniforms made a great hit with both sections. They pointed cheer after cheer out of the heavy-hearted State supporters and the Green and White cheering section was an'out of pep at the finish as at the start of the contest.

There were fully five thousand State supporters in the stands and they came to Ann Arbor by carloads and dozens means. The special train took many while others drove to the battle field in their cars or someone else's. Many hit the highways and some took the rails. No matter what method of transportation was used, the old State spirit could not be squelched even though the score was against the Green and White.

The team fought to the last minute of play and the entire bunch of supporters fought with them and cheered them in their vain attempt to stem the tide of defeat. Spirit like this never goes unwarded and it will not be long before Michigan State students can go to Ann Arbor and return victorious.

MANY CO-EDS TAKE SWIMMING COURSE

All Co-eds Are Required to Take Swimming Before Junior Year

Five hundred twenty girls are enrolled in the swimming classes according to latest figures given out by the health department. A large percentage of these have had previous experience and training in swimming at school.

The W. A. A. believing it important that every girl learn to swim have determined the following requirements must have been met at the end of the Sophomore year or a grade of incomplete will stand until met: A passing grade in Physical Education. One hour of dancing.

A passing grade in following swimming requirements: motionless float for 40 seconds, tread water for 60 seconds, plunge from side of pool, plain front dive from board, each of following strokes, correct form for 30 yards, breast.

A schedule has also been made for women employees, faculty members and wives of faculty. The course will start this week Wednesday and continue through the semester. The hours are given out as follows: Women employed in campus departments on campus, 6:00 to 8:00 p.m. the evening. Life Saving course, 8:00 and instructors and wives of faculty from 8:00 to 9:00 p.m.

Opens Beauty Parlor In Connection With Barber Shop

Don Stratton, manager and proprietor of the Campus Barber Shop, announces the opening of a beauty parlor in connection with his establishment. He has engaged the services of Miss Gertrude Hightower to manage this department.

The new beauty parlor is expected to give all kinds of violet ray facial treatments.

The cleanliness and orderliness which have been characteristic of the shop has been extended to the new parlor.

The Campus Barber Shop Beauty Parlor is located on the corner of Grand River avenue and hot road.

Washburn
Cigars
Billiards

Next to P. O. Under Maches

We Are Not Satisfied Unless You Are

SANITARY DRY CLEANERS

206 Abbot Road

Better SHOE REPAIRING

Done By

Barratt Shoe Repair Shop

Basement Under Fashion Shop

THE CAMPUS APARTMENTS

DINING ROOM

SPECIAL RATES

For Meals for All Professors and M. S. C. Students

SEE BERTHA RYAN, Manager

EYEGLASSES and SPECTACLES

for EYE DEFECTS

Towle Optical Co.

Established in Lansing More Than Twenty Years

HOTEL DOWNEY

Make the Downey Your Headquarters When Downtown

HARVEY PHOTO SHOP

PHOTOGRAPHIC FINISHING

24-Hour Service

214 Abbot Road EAST LANSING, MICHIGAN

Wolverine Typewriter Company

120 W. Lewis Phone 22731

Agents for Corona Typewriters

Rebuilt and Second Hand Machines All Standard Makes, Prices from \$25.00 to \$250.00

Student Rental Rates \$3.00 per month or 3 months for \$25.00 Free Delivery

Welcome to '29

The Hunt Food Shop

Telephone 23137

Adolph Kositchek, Tailor

227 1/2 South Washington Avenue South of Arcade

THE PLACE TO EAT.....

The Wolverine Lunch

LANSING, MICHIGAN

OPEN DAY and NIGHT

STUDENTS COME To Eat at

M. S. C. RESTAURANT

OPEN DAY AND NIGHT