

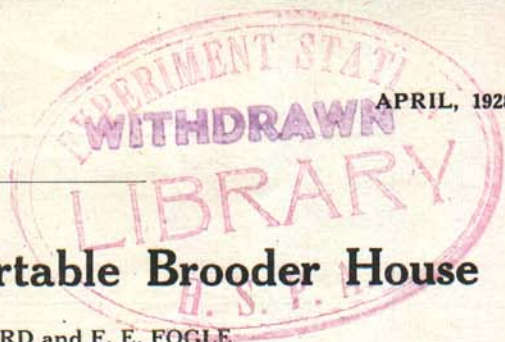
## **MSU Extension Publication Archive**

Archive copy of publication, do not use for current recommendations. Up-to-date information about many topics can be obtained from your local Extension office.

A 10'x12' Portable Brooder House  
Michigan State University Extension Service  
C.G. Gard, F.E. Fogle  
Issued April 1928  
4 pages

The PDF file was provided courtesy of the Michigan State University Library

**Scroll down to view the publication.**



## A 10' x 12' Portable Brooder House

C. G. CARD and F. E. FOGLE



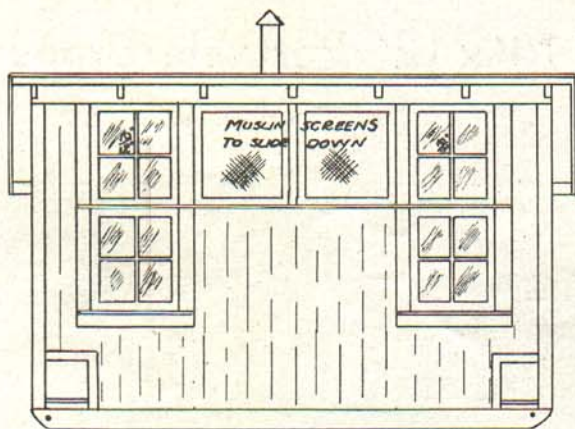
### Grow Better Chicks

The prevention of chick troubles depends upon the adoption and carrying to completion of a definite sanitation plan for raising chicks. The movable brooder house is an aid in preventing chick troubles. The Michigan State College Extension Services recommend a 10 x 12 portable brooder house, a picture of which is shown above. A house of this size readily accommodates a large size, 52-56-inch hover, hard coal burning brooder stove. We recommend that you place, not to exceed, 400 chicks in a house of this size. For information relative to brooding, feeding, and care of chicks, write to the Extension Division of Michigan State College for Extension Bulletin No. 52, entitled "Care and Feeding of Growing Chicks."

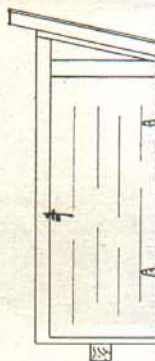
### MICHIGAN STATE COLLEGE

EXTENSION DIVISION  
R. J. BALDWIN, Director

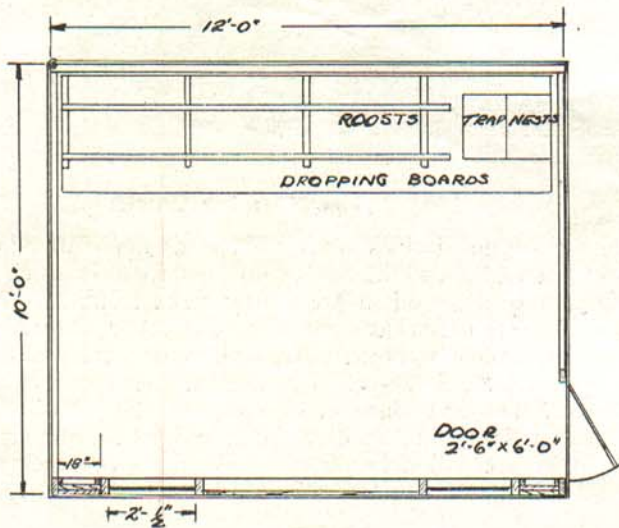
Printed and distributed in furtherance of the purposes of the co-operative agricultural extension work provided for in Act of Congress, May 8, 1914. Michigan State College of Agriculture and Applied Science and U. S. Department of Agriculture co-operating.



SOUTH ELEVATION



EAST

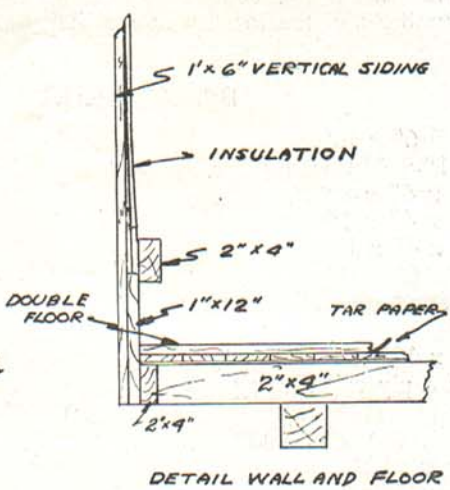
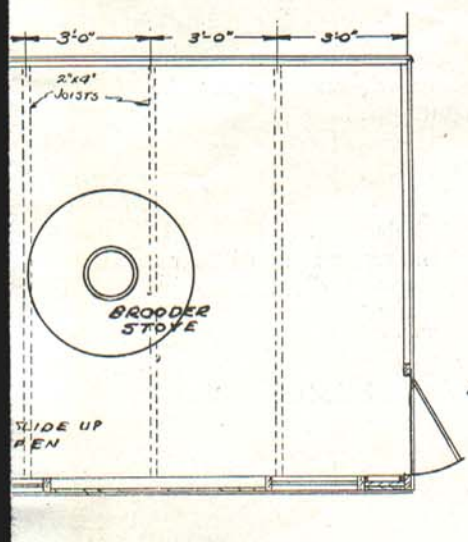
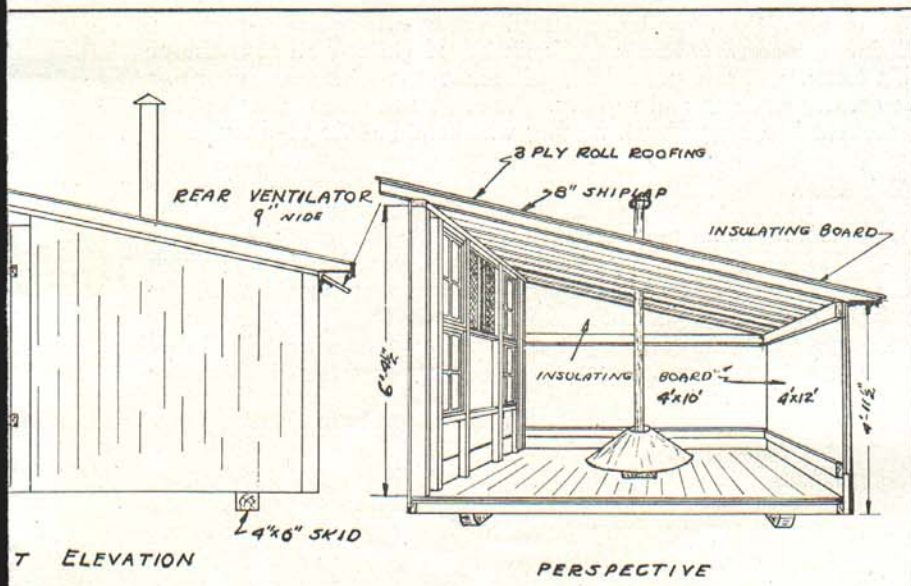


HOUSE FOR LAYING HENS



HO





PORTABLE COLONY HOUSE  
 CONVERTIBLE BROODER-LAYER HOUSE  
 Agrl. Engr Dept. R. F. DEAN  
 Poultry Dept. ENR. H. C. W.  
 No. 6 Scale 1/2" = 1'-0"  
 East Lansing, Mich.  
 Date 1-27-28 No. C-2071

## Construction

The use of one-half inch insulating board will result in fuel saving, in a more uniform temperature, and less likelihood of chilling chicks. Large sheets of this board make it possible to eliminate some framing members and still give greater strength and rigidity. Its use on the roof gives rigidity sufficient to prevent breaking of roll roofing when the building is moved.

## Doors and Windows

No window or door frames are necessary. A 1" x 4" forms the window and door sills. The window casings should extend over the opening about half an inch and the sash laid against them. The door casings should be nailed back from the opening about three-quarters of an inch permitting the door to swing against the siding. A door made of flooring will shrink and swell considerably so that at least three-eighths of an inch allowance should be made for this.

## Ventilation

The use of muslin screens in the front, and ventilators between the rafters at the back makes a ventilation system that is simple, economical, and effective. Muslin permits air to filter through but quite effectively prevents drafts. When greater air circulation is desired, the window sash may be dropped in at the top, or the rear ventilator may be left open according to needs. In extreme cold weather it is advisable to use additional material over the front muslin screen.

## Cost

Material for this house will cost from \$80 to \$100 depending upon the quality of lumber and the locality in which it is purchased.

## Bill of Material

2 pcs. 4" x 6" x 12'	Skids
625 bd. ft. 1" x 6" flooring	Siding and double floor
13 pcs. 2" x 4" x 12'	Frame and rafters
17 pcs. 2" x 4" x 10'	Frame
16 pcs. 1" x 4" x 12'	Trim
2 pcs. 1" x 6" x 12'	Trim
200 bd. ft. 8" shiplap (14 ft. long)	Roof boards
3 pcs. 1" x 12" x 12' long	
2 pcs. 1" x 12" x 10' long	
2 squares 3 ply roll roofing	
1 roll tar paper (in between double floor)	
4 barn sash 4 lt. 10" x 12"	
1 pr. hinges 5" T	
2 pr. hinges 3" strap (ventilators)	
10 lbs. 8d, 15 lbs. 16d, 5 lbs. 6d common nails, 4 lbs. 8d box nails	
6 lbs. 1" x 3/8" head roof nails (galvanized)	
5 pcs. 4' x 12' insulating board	
4 pcs. 4' x 10' insulating board	