

## **MSU Extension Publication Archive**

Archive copy of publication, do not use for current recommendations. Up-to-date information about many topics can be obtained from your local Extension office.

Soils of Michigan - Map  
Michigan State University  
Cooperative Extension Service  
Farm Science Series  
E.P. Whiteside, and I.F. Schneider  
July 1968(?)  
1 page

The PDF file was provided courtesy of the Michigan State University Library

**Scroll down to view the publication.**

# MAJOR MICHIGAN SOIL ASSOCIATIONS

I. F. Schneider and E. P. Whiteside

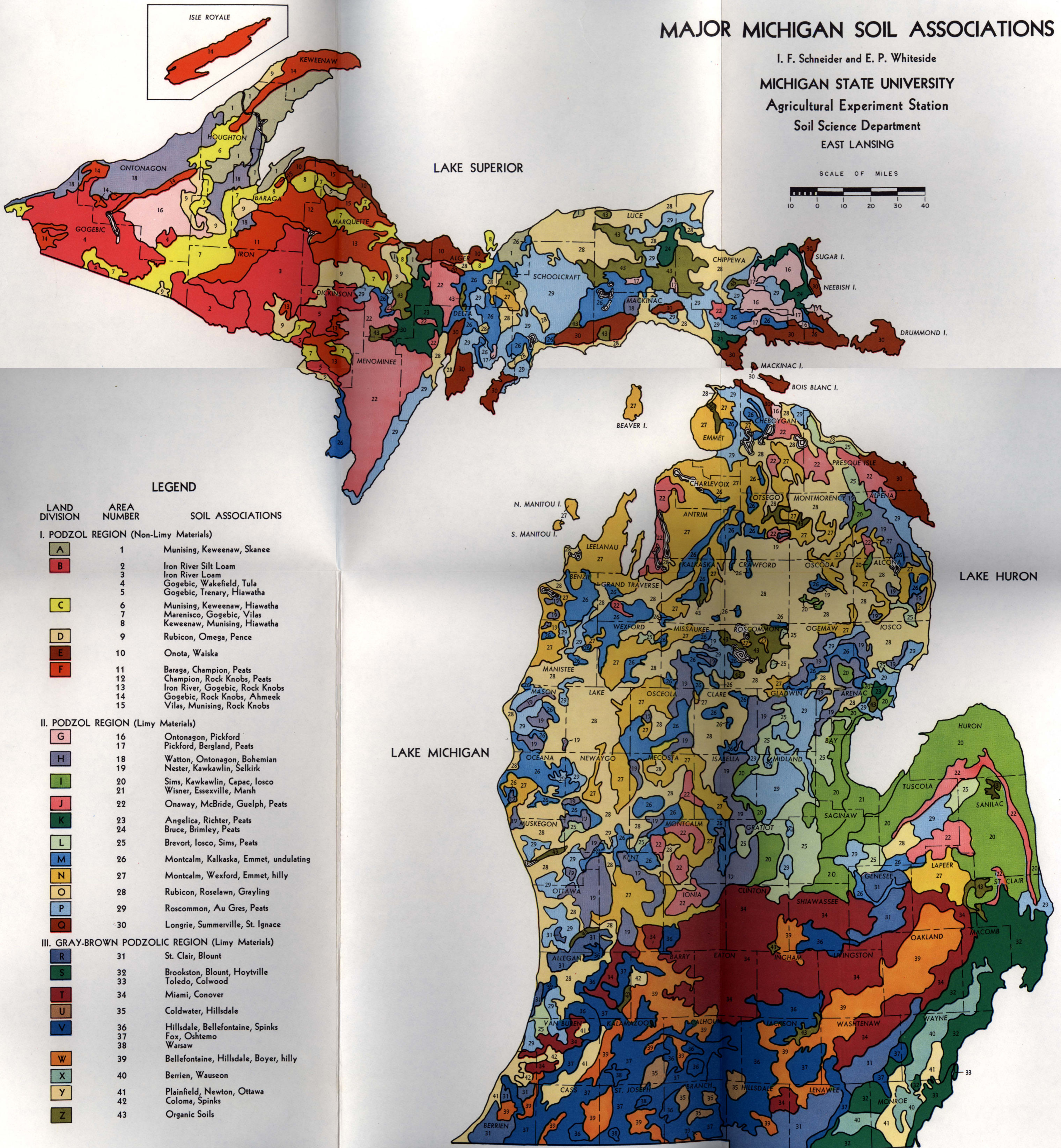
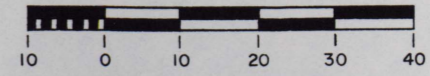
MICHIGAN STATE UNIVERSITY

Agricultural Experiment Station

Soil Science Department

EAST LANSING

SCALE OF MILES



## LEGEND

| LAND DIVISION | AREA NUMBER | SOIL ASSOCIATIONS |
|---------------|-------------|-------------------|
|---------------|-------------|-------------------|

### I. PODZOL REGION (Non-Limy Materials)

|   |    |                                 |
|---|----|---------------------------------|
| A | 1  | Munising, Keweenaw, Skanee      |
| B | 2  | Iron River Silt Loam            |
|   | 3  | Iron River Loam                 |
|   | 4  | Gogebic, Wakefield, Tula        |
|   | 5  | Gogebic, Trenary, Hiawatha      |
| C | 6  | Munising, Keweenaw, Hiawatha    |
|   | 7  | Marenisco, Gogebic, Vilas       |
|   | 8  | Keweenaw, Munising, Hiawatha    |
| D | 9  | Rubicon, Omega, Pence           |
| E | 10 | Onota, Waiska                   |
| F | 11 | Baraga, Champion, Peats         |
|   | 12 | Champion, Rock Knobs, Peats     |
|   | 13 | Iron River, Gogebic, Rock Knobs |
|   | 14 | Gogebic, Rock Knobs, Ahmeek     |
|   | 15 | Vilas, Munising, Rock Knobs     |

### II. PODZOL REGION (Limy Materials)

|   |    |                                       |
|---|----|---------------------------------------|
| G | 16 | Ontonagon, Pickford                   |
|   | 17 | Pickford, Bergland, Peats             |
| H | 18 | Watton, Ontonagon, Bohemian           |
|   | 19 | Nester, Kawkawlin, Selkirk            |
| I | 20 | Sims, Kawkawlin, Capac, Iosco         |
|   | 21 | Wisner, Essexville, Marsh             |
| J | 22 | Onaway, McBride, Guelph, Peats        |
| K | 23 | Angelica, Richter, Peats              |
|   | 24 | Bruce, Brimley, Peats                 |
| L | 25 | Brevort, Iosco, Sims, Peats           |
| M | 26 | Montcalm, Kalkaska, Emmet, undulating |
| N | 27 | Montcalm, Wexford, Emmet, hilly       |
| O | 28 | Rubicon, Roselawn, Grayling           |
| P | 29 | Roscommon, Au Gres, Peats             |
| Q | 30 | Longrie, Summerville, St. Ignace      |

### III. GRAY-BROWN PODZOLIC REGION (Limy Materials)

|   |    |  |
|---|----|--|
| R | 31 | St. Clair, Blount                      |
| S | 32 | Brookston, Blount, Hoytville           |
|   | 33 | Toledo, Colwood                        |
| T | 34 | Miami, Conover                         |
| U | 35 | Coldwater, Hillsdale                   |
| V | 36 | Hillsdale, Bellefontaine, Spinks       |
|   | 37 | Fox, Oshtemo                           |
|   | 38 | Warsaw                                 |
| W | 39 | Bellefontaine, Hillsdale, Boyer, hilly |
| X | 40 | Berrien, Wauseon                       |
| Y | 41 | Plainfield, Newton, Ottawa             |
|   | 42 | Coloma, Spinks                         |
| Z | 43 | Organic Soils                          |