

## **MSU Extension Publication Archive**

Archive copy of publication, do not use for current recommendations. Up-to-date information about many topics can be obtained from your local Extension office.

Secondary and Micronutrients for Vegetables and Field Crops

Michigan State University

Cooperative Extension Service

Farm Science Series

M.L. Vitosh, D.D. Warncke and Robert E. Lucas, Extension Specialists in Soils,

Department of Crop and Soil Sciences

November 1973

20 pages

The PDF file was provided courtesy of the Michigan State University Library

**Scroll down to view the publication.**

**FOR VEGETABLES AND FIELD CROPS**

Extension Bulletin E-456 • Farm Science Series • November 1973  
Cooperative Extension Service • Michigan State University

# **Secondary- and Micro-nutrients**

FILE COPY  
DO NOT REMOVE



## TABLE OF CONTENTS

GENERAL INFORMATION .....	2
Needs for Secondary- and Micro-nutrients.....	3
Trends in Secondary- and Micro-nutrient use	3
Identifying Problem Areas .....	3
SECONDARY- AND MICRO-NUTRIENT	
FERTILIZERS .....	4
Michigan Fertilizer Law .....	4
The Broad Spectrum Approach .....	5
The Fertilizer Label .....	5
CALCIUM .....	6
Calcium Deficiency Symptoms .....	6
Correcting Calcium Deficiency .....	6
Calcium Toxicity .....	6
MAGNESIUM .....	6
Magnesium Deficiency Symptoms .....	6
Correcting Magnesium Deficiency .....	7
Magnesium Toxicity .....	7
SULFUR .....	7
Sulfur in Michigan Soils .....	7
Sulfur Deficiency Symptoms .....	9
Correcting Sulfur Deficiency .....	9
Sulfur Toxicity .....	9
MANGANESE .....	9
Manganese Deficiency Symptoms .....	9
Correcting Manganese Deficiency .....	10
Manganese Toxicity .....	11
BORON .....	11
Boron Deficiency Symptoms .....	12
Correcting Boron Deficiency .....	12
Boron Toxicity .....	12
ZINC .....	12
Zinc Deficiency Symptoms .....	14
Zinc Fertilizer Carriers .....	14
Rates, Methods of Applying Zinc Fertilizer .....	14
Zinc Carryover .....	15
Soil and Plant Tissue Tests for Zinc .....	15
Zinc Toxicity .....	15
MOLYBDENUM .....	15
Molybdenum Deficiency Symptoms .....	15
Correcting Molybdenum Deficiency .....	17
Molybdenum Toxicity .....	17
COPPER .....	17
Copper Deficiency Symptoms .....	17
Correcting Copper Deficiency .....	17
Copper Toxicity .....	18
IRON .....	18
Iron Deficiency Symptoms .....	18
Correcting Iron Deficiency .....	18
Iron Toxicity .....	18
FOLIAR APPLICATION OF SECONDARY- AND	
MICRO-NUTRIENTS .....	18

# Secondary- and Micro-nutrients

## FOR VEGETABLES AND FIELD CROPS

By M. L. VITOSH, D. D. WARNCKE AND R. E. LUCAS,  
*Extension Specialists in Soils, Department of Crop and  
Soil Sciences, Michigan State University.*

## GENERAL INFORMATION

Plant nutrients in fertilizers are classified as primary, secondary- and micro-nutrients. The primary or major nutrients are nitrogen (N), phosphorus (P) and potassium (K). These elements are required in relatively large amounts and are most likely to be deficient for plant growth. Secondary nutrients are also required in relatively large amounts, but are less likely to be deficient. They include calcium (Ca), magnesium (Mg) and sulfur (S). Micronutrients are essential in relatively small amounts by plants. They include manganese (Mn), iron (Fe), boron (B), zinc (Zn), copper (Cu), molybdenum (Mo) and chlorine (Cl). These elements may also be referred to as minor or trace elements, however "Micronutrient" is preferred.

The information presented here is primarily a result of research conducted in Michigan and may not be adaptable to other areas of the United States.

COVER: Manganese-deficient soybeans on organic soil, center. Leaves are mottled between the veins and later turn yellow. Soybeans on either side responded to manganese fertilizer.

## Needs for Secondary- and Micro-nutrients

The extent of both secondary- and micro-nutrient deficiencies in Michigan is not widespread, but a deficiency of any of these elements can cause plant abnormalities, reduced growth or crop failure. The need for these nutrients in crop production has drawn increased attention for the following reasons:

1. More information regarding crop responses and availability of the nutrients in different soil types has been accumulated.
2. Higher crop yields require larger amounts of the elements.
3. Long-time cropping has removed measurable amounts of these minerals.
4. Less widespread use of animal manures and greater use of high analysis fertilizers low in impurities (secondary- and micro-nutrients).
5. Higher potassium levels in the soil and greater use of nitrogen fertilizer can cause a magnesium imbalance in some plants creating a potential for hypomagnesia (grass tetany) problems in livestock.
6. Higher phosphorus levels in the soil can induce zinc deficiency.
7. Reduced sulfur emissions from industry as a result of air pollution abatement practices have decreased the amount of sulfur falling to the soil in rain water.
8. More attention is being given to crop quality and nutritional value of today's crops.
9. Increased attention is being given to elements which might reduce disease and damage from air pollutants.

## Trends in Secondary- and Micro-nutrient Use

Sales of secondary-nutrient fertilizers have increased sharply since 1965 while micronutrient sales, in general, have decreased (Table 1). Zinc is the only micronutrient showing relatively constant sales. Not all of the increase in secondary-nutrient carriers can strictly be attributed to crop needs. Many of the secondary-nutrient carriers also contain major nutrients and therefore may be used primarily to supply the major nutrient. The decline in micronutrient sales indicates that some farmers have corrected their micronutrient deficiencies, while others have found that these elements are not needed for their soils. Farmers and advisors have also come to recognize where deficiencies exist rather than to make widespread use of these secondary- and micro-nutrients.

## Identifying Problem Areas

The criteria used to help identify secondary- and micro-nutrient problems are: (1) soil tests, (2) plant analyses, (3) soil type, (4) crop planted, (5) plant symptoms, and (6) yield goals. A good way to confirm a suspected nutrient deficiency is to obtain plant and soil samples from areas of adjacent normal and abnormal plant growth and have them tested.

The MSU Soil Testing Laboratory will test soil samples for pH, available phosphorus, exchangeable (available) potassium, calcium, magnesium and extractable (available) zinc, manganese, copper. The copper test is available for organic soils only. Other laboratories may offer soil tests for sulfur, boron and iron.

Plant tissue analyses by emission spectrographic procedures are available through the MSU Soil Testing Laboratory. Table 2 shows the acceptable or sufficiency nutrient ranges required for high production of sev-

TABLE 1. Sales of selected secondary- and micro-nutrient carriers in Michigan.<sup>1</sup>

Secondary Nutrients	1965 (tons)	1970 (tons)	1971 (tons)
<b>Calcium (Ca)</b>			
Agricultural limestone <sup>2</sup>	423,173	451,651	451,650
Calcium nitrate	85	457	—
<b>Magnesium (Mg)</b>			
Sulfate of potash-magnesia	502	705	1,769
Magnesium sulfate	13	118	476
Magnesium oxide	171	9	56
<b>Sulfur (S)</b>			
Ammonium sulfate	1,897	2,366	2,755
Potassium sulfate	298	2,333	2,202
Elemental sulfur	—	8	31
<b>Micronutrients</b>			
<b>Boron (B)</b>			
Borax	235	100	161
<b>Manganese (Mn)</b>			
Manganese sulfate	1,381	529	476
Manganese oxide	1,071	648	331
<b>Zinc (Zn)</b>			
Zinc sulfate	96	257	281
Zinc oxide	246	259	176
<b>Copper (Cu)</b>			
Copper sulfate	33	5	4
Copper oxide	22	2	8

<sup>1</sup> Information from the Michigan Department of Agriculture.

<sup>2</sup> Estimates made by ASCS and the Department of Crop and Soil Sciences.

eral important Michigan crops. The values reported for vegetables are general and should be used only as guidelines. Nutrient levels below those suggested can indicate a deficiency. Values above these ranges may be excessive and even toxic.

Values for sulfur are not reported because it is not easily measured in plant tissue, however, sulfur values in plant tissue are similar to phosphorus. Research in Minnesota and Wisconsin indicates legume crops containing less than 0.2% sulfur should respond to sulfur fertilization.

## SECONDARY-, MICRO-NUTRIENT FERTILIZERS

Many fertilizer companies sell a "premium" grade fertilizer. A "premium" fertilizer may have special desirable features, e.g., better drillability, less caking, uniform-sized particles and higher water-soluble phosphorus content. Usually, premium fertilizers have secondary- and/or micro-nutrients added, however, for the manufacturer to claim these added nutrients, certain minimum compositions must be met in compliance with the Michigan fertilizer law.

### Michigan Fertilizer Law

The guaranteed minimum levels of secondary- and/or micro-nutrients which can be claimed in agricultural

fertilizers in Michigan are given in Table 3. Many states have set minimums for claims at levels recommended by the Association of American Plant Food Control Officials (AAPFCO). These levels are lower than those permitted by Michigan regulations. We believe that these low levels often do not carry sufficient quantities to correct a deficiency. For example, one application of

TABLE 3. Minimum percentages of secondary- and micro-nutrients which must be present in fertilizer to be claimed under Michigan Fertilizer Laws.

Element	Minimum percent required <sup>a</sup>
<b>Secondary</b>	
Calcium (Ca)	1.0%
Magnesium (Mg)	1.0%
Sulfur (S)	1.0%
<b>Micronutrients</b>	
Manganese (Mn)	1.0%
Iron (Fe)	0.10%
Boron (B)	0.125%
Copper (Cu)	0.5%
Zinc (Zn)	0.5% inorganic, 0.125% organic
Molybdenum (Mo)	0.04%

<sup>a</sup> Inclusion of any multiple of the minimum is also permitted, e.g., Copper: 0.5%, 1.0%, 1.50%, etc.

TABLE 2. Nutrient sufficiency ranges for corn, soybeans, alfalfa, wheat, sugar beets, potatoes and vegetables.<sup>1</sup>

ELEMENT	CORN	SOYBEANS	ALFALFA	WHEAT	SUGAR BEETS	VEGETABLES	POTATOES
	Ear leaf sample of initial silk	Upper fully developed leaf sampled prior to initial flowering	Top 6 inches sampled prior to initial flowering	Upper leaves sampled prior to initial bloom	Center fully developed leaf sampled in mid-season	Top fully developed leaves	Petioles from most recently matured leaf sampled in mid-season
Percent (%)							
Nitrogen	2.76-3.50	4.25-5.50	3.76-5.50	2.59-3.00	3.01-4.50	2.50-4.00	2.50-4.00
Phosphorus	0.25-0.40	0.26-0.50	0.26-0.70	0.21-0.50	0.26-0.50	0.25-0.80	0.18-0.22
Potassium	1.71-2.50	1.71-2.50	2.01-3.50	1.51-3.00	2.01-6.00	2.00-9.00	6.0 -9.0
Calcium	0.21-1.00	0.36-2.00	1.76-3.00	0.21-1.00	0.36-1.20	0.35-2.00	0.36-5.00
Magnesium	0.16-0.60	0.26-1.00	0.31-1.00	0.21-1.00	0.36-1.00	0.25-1.00	0.17-0.22
Parts per million (ppm)							
Manganese	20-150	21-100	30-100	16-200	21-150	30-200	30-200
Iron	21-250	51-350	30-250	11-300	51-200	50-250	30
Boron	4-25	21-55	31-80	6-40	26-80	30-60	15-40
Copper	6-20	10-30	11-30	6-50	11-40	8-20	7-30
Zinc	20-70	21-50	21-70	21-70	19-60	30-100	30-100
Molybdenum	0.1-2.0	1.0-5.0	1.0-5.0	0.03-5.0	.15-5.0	0.5 -5.0	0.5 -4.0

<sup>1</sup> All values except those for potatoes and vegetables were obtained from the 1972-73 Agronomy Guide, Ohio State University.

300 pounds of fertilizer containing 0.05% manganese (minimum set by AAPFCO) per acre will supply 0.15 pounds of manganese. In deficient soils, field trials have shown a need for at least 5 pounds per acre—a 32-fold difference.

Claims may be made by the manufacturer that these elements in premium fertilizers are needed as a maintenance fertility program. In very sandy soils, such a claim has merit for some micronutrient elements. But for most agricultural soils in Michigan, the problem is not the maintenance level, but keeping the nutrients in an available form.

Most soils have ample total iron and manganese but it is largely in an unavailable form. The availability of copper and zinc is also governed by their absorption to soil particles. Boron is a highly mobile element which does not accumulate to a great extent in sandy soils and therefore cannot be maintained at sufficiently high levels. In other soils, boron may also be absorbed and unavailable for crop use.

#### The Broad Spectrum Approach

Although there is much information about crop requirements and availability in the soil, it is impossible to know all situations where a micronutrient problem exists. A farmer may wish to try out an all-inclusive micronutrient mix on part of his crop. If response is obtained, further tests should be carried out to determine the source of the response. A suggested micronutrient mix for a well-limed soil is shown in Table 4. These chemicals are available from most fertilizer companies.

If the mixture suggested is used, thoroughly mix the micronutrients with a suitable fertilizer such as 6-24-12 (N-P<sub>2</sub>O<sub>5</sub>-K<sub>2</sub>O). Be sure to obtain complete mixing when micronutrients are applied with other fertilizers. Segregation, because of particle size differences, is often a problem, especially in bulk-blend mixtures. Use the

TABLE 4. Suggested micronutrient mixture to be applied per acre for well limed soils (pH above 6.0).

ELEMENT	Lbs. per acre <sup>1</sup>	Suggested carrier	Lbs. per acre
Manganese (Mn)	5.0	Manganese sulfate	20
Zinc (Zn)	2.0	Zinc sulfate	6
Copper (Cu)	1.0	Copper sulfate	4
Boron (B)	0.5 <sup>2</sup>	Borax	5
Molybdenum (Mo)	0.2	Sodium molybdate	0.5

<sup>1</sup> Double the rate for organic soils.

<sup>2</sup> Do not use boron for crops easily injured by boron, such as beans and small grains.



Figure 1. Magnesium-deficient corn. Older leaves show interveinal chlorosis. Symptoms usually appear early but may later disappear. Severe deficiency causes stunting.

mixture as soon as possible to prevent caking. Place the fertilizer in bands about two inches away from the seed to prevent fertilizer injury to the crop.

#### The Fertilizer Label

If secondary- and/or micro-nutrients are added to a licensed fertilizer, the fertilizer bag or sales slip must have attached a label or tag bearing a legible statement of: (1) pounds of the licensed N-P<sub>2</sub>O<sub>5</sub>-K<sub>2</sub>O fertilizer grade per ton; (2) pounds of the additional plant nutrient compounds per ton; and (3) guaranteed elemental percent of the added plant nutrients. A typical label would read as follows: *This package contains a mixture of the following per ton:*

1750 pounds 6-24-12	
nitrogen (N).....	Min. 6%
available phosphoric acid (P <sub>2</sub> O <sub>5</sub> ).....	Min. 24%
potash (soluble K <sub>2</sub> O).....	Min. 12%
160 pounds of manganese sulfate—equiv. 2%	
Mn in mixture	
40 pounds of copper oxide — equiv. 1% Cu	
in mixture	
50 pounds of borax — equiv. 0.25% B in mixture	
<u>2000 pounds (TOTAL)</u>	

In determining the cost of the fertilizer, the billing for the N-P-K material is reduced proportionally to correct the dilution effect of the added ingredients. The charges on the additional nutrients are then added. In price quotations, the manufacturer often shows

the cost of one percent of each additional nutrient in the fertilizer.

All secondary- and micro-nutrient recommendations are given in *pounds of element* per acre. The amount required in mixed fertilizer depends on the application rate. Values in Table 5 are suggested guides for conversion.

## CALCIUM

Calcium, an essential part of plant cell wall structure, provides for normal transport and retention of other elements as well as strength in the plant. It is also thought to counteract the effect of alkali salts and organic acids within a plant. Calcium is absorbed as the ion  $\text{Ca}^{++}$  and exists in a delicate balance with magnesium and potassium in the plant. Too much of any one of these three elements may cause insufficiencies of the other two.

### Calcium Deficiency Symptoms

Calcium deficiency is usually observed as a failure of terminal buds and apical root tips to develop. In corn, new leaves fail to emerge from the whorl due to a sticky gelatinous material on the edges of the leaves. The tips of these leaves are also very chlorotic (yellowish).

Disorders such as blossom end rot in peppers and tomatoes, black heart in celery, internal tip burn in cabbage and cavity spot in carrots are attributed to calcium deficiency.

In Michigan, calcium deficiency occurs only on very acid soils (less than pH 5.0) or where excessive quanti-

ties of potassium or magnesium have been used. Soils which are adequately limed are high in calcium. Even soils which are moderately acid (between pH 5.0 and 6.0) generally contain sufficient calcium for plants. Poor plant growth on these soils is usually due to excess soluble aluminum, manganese, and/or iron and not inadequate calcium.

### Correcting Calcium Deficiency

Calcium in plants is a relatively non-mobile element. Where deficiencies exist and foliar sprays are used to correct the deficiency, it is very important to cover the young terminal growth with calcium. Applications on older leaves will not benefit the plant. Lime should be used to correct calcium deficiency when it occurs on acid soils.

### Calcium Toxicity

Excess levels of calcium are rarely detrimental to plant growth. However, excessive calcium carbonate in the soil may result in other nutritional problems associated with high pH. Band applications of acid forming fertilizers may lower the soil pH in the band and increase the availability of other nutrients.

## MAGNESIUM

Magnesium is a part of the chlorophyll in all green plants and essential for photosynthesis. It also helps activate many plant enzymes, needed for growth. Magnesium, a relatively mobile element in the plants, is absorbed as the ion  $\text{Mg}^{++}$  and can be readily translocated from older to younger plant parts in the event of a deficiency.

### Magnesium Deficiency Symptoms

Inadequate liming and excessive potassium applications will depress magnesium uptake. In corn, the symptoms first appear as interveinal chlorosis in the older leaves (Figure 1). Symptoms often appear early in the season in cold wet soils and may disappear as the soil warms up and dries. Severe deficiency may cause stunting.

In celery, chlorosis starts on the tips of the older leaves and progresses around the leaf margins (edges) and inward between the veins. Magnesium deficiency is a common disorder in greenhouse tomatoes. The oldest leaves are first to show symptoms of chlorosis. The

TABLE 5. Percentage of the element needed in mixed fertilizer based on the amount of fertilizer applied.

Lbs. of fertilizer per acre	Pounds of the element desired per acre						
	0.5	1	2	4	6	10	20
	percent in the fertilizer						
100	½	1	2	5	5	—	—
200	¼	½	1	2	3	5	—
300	¼	½	1	1	2	3	—
400	¼	¼	½	1	2	2	5
600	—	¼	½	½	1	2	3
800	—	¼	¼	½	1	1	2
1000	—	—	¼	½	½	1	2
1500	—	—	¼	¼	½	½	1
2000	—	—	¼	¼	¼	½	1

veins remain green while the interveinal tissues become yellow, then brown, causing the leaves to become very brittle.

In oats and wheat, the older leaves show a distinctive "chainlike" yellow streaking. In potatoes, the loss of green color begins at the tips and margins of the older leaves and progresses between the veins toward the center of the leaflets. The leaves become brown and very brittle during the advanced stages of the deficiency.

Other responsive crops in Michigan are cauliflower, muskmelons, peas, and rye. General deficiency symptoms for these crops show that the oldest leaves are mottled or lighter green than normal or new leaves.

#### Correcting Magnesium Deficiency

Present soil test criteria for recommending magnesium in Michigan are: (1) if the exchangeable magnesium level is less than 75 pounds per acre, or (2) if the equivalents of potassium exceed magnesium (on a weight basis this is about 3 parts of potassium to one part magnesium), or (3) if the soil magnesium (as a percent of total bases) is less than 3 percent.

On acid soils where magnesium need is indicated, at least 1,000 pounds of dolomitic limestone should be applied. On soils which are not acid and need magnesium, soluble sources are suggested. Magnesium sulfate (Epsom salts), sulfate of potash-magnesia or finely ground magnesium oxide are all satisfactory sources of magnesium.

Magnesium can be applied as a foliar spray. Suggested rates per acre are 10 to 20 pounds of magnesium sulfate (Epsom salts) in 100 gallons of water.

Magnesium deficiency may be induced by high rates of potassium. In some states, agronomists strive for at least 10 percent magnesium of the total exchangeable bases (equivalent basis). These high rates are aimed at preventing "grass tetany" disorders in livestock which feed on lush grass. Anyone concerned with "grass tetany" should avoid excessive rates of potassium fertilizer. Legume hay, which is generally high in magnesium, should also be fed. Some magnesium carriers can be mixed with grain or salt rations and may also be considered. Contact your animal feed specialist for amounts and sources.

Magnesium uptake by celery appears related to its genetic makeup. Some celery varieties are unable to take up enough magnesium from the soil resulting in magnesium deficiency, and other varieties grow normally. For those varieties which are inefficient users of soil-applied magnesium, foliar applications of 5 to 10 pounds of magnesium sulfate per acre sprayed at 10-day intervals may be necessary.

#### Magnesium Toxicity

Excess magnesium has not been a problem in Michigan. Even the continued use of dolomitic limestone has not caused magnesium toxicity. Magnesium toxicity, however, has been described in other areas. High soil magnesium levels can cause poor plant growth due to its interaction with calcium and potassium. Symptoms of magnesium toxicity are often similar to those of calcium deficiency.

#### SULFUR

Sulfur is taken up by plants primarily in the form of sulfate ( $SO_4^{2-}$ ) ions and reduced and assembled into organic compounds. It is a constituent of the amino acids (cystine, cysteine and methionine) and hence proteins that contain these amino acids. It is found in vitamins, enzymes and co-enzymes.

Sulfur is also present in glycosides which give the characteristic odors and flavors in mustard, onion and garlic plants. It is required for nodulation and nitrogen fixation of legumes. As the sulfate ion, it may be responsible for activating some enzymes.

#### Sulfur in Michigan Soils

In soil, sulfur is present primarily in the organic form which becomes available upon decomposition of organic matter. The available sulfate ( $SO_4^{2-}$ ) ion remains in soil solution much like the nitrate ( $NO_3^-$ ) ion until it is taken up by the plant. In this form it is subject to leaching as well as microbial immobilization. In water logged soils it may be reduced to elemental sulfur (S) or other unavailable forms.

Sulfur may be supplied to the soil from the atmosphere in rainwater. In rural areas of Michigan this amount will generally vary from 8 to 15 pounds per acre annually depending on proximity to an emission source of atmospheric sulfur. Precipitation within several miles of certain industrial sites may contain 10 to 20 times as much sulfur as rural areas. Fertilizer impurities also contribute to the overall supply of available sulfur in soils.

Because of the many light-colored sandy soils in Michigan, more intensive cropping and increased use of fertilizers low in sulfur, one might suspect that sulfur deficiency might be widespread. Recent field trials, however, showed little need for additional sulfur fertilizer. Soil mineral sources and sulfur fallout from the atmosphere are believed to exceed the plant requirements.





Figure 2. Sulfur-deficient dark red kidney beans. Light-green color and reduced growth, left. Resembles nitrogen deficiency. Plants mature early. Normal plant, right.



Figure 3. Manganese-deficient dark red kidney beans. Yellowing between the leaf veins. Veins remain green.



Figure 4. Manganese-deficient celery. Chlorosis of the leaves between the dark veins.



Figure 5. Manganese deficiency in cabbage. Interveinal chlorosis of the leaves generally over the entire plant, center. Healthy plant in front.



Figure 6. Manganese deficiency in sugar beets. Mottling between the veins, right. Chlorosis usually begins on the younger leaves. Severe deficiency causes gray and black specks along the veins.



Figure 7. Manganese deficiency in field beans. Yellow mottling between the veins, right. Symptoms occur 3 to 4 weeks after emergence. Normal leaf, left.

### Sulfur Deficiency Symptoms

Plants which are sulfur deficient generally have a light green color which resembles nitrogen deficiency. The most likely crops to show a sulfur deficiency are those grown in the sandy, low organic matter soils in northern Michigan. Legumes, especially alfalfa which has a high sulfur requirement, will normally be the first crop to respond to sulfur fertilization. Field beans not adequately fertilized with nitrogen have been shown to respond to sulfur fertilizer (Figure 2). Corn, small grains and other grasses are less likely to show sulfur deficiency.

### Correcting Sulfur Deficiency

Application rates of 20 to 40 pounds of sulfur per acre will correct a sulfur deficiency. Soluble sources of sulfur, such as potassium sulfate, sulfate of potash-magnesia, epsom salts, ammonium sulfate or gypsum, are usually preferred to elemental sulfur. For most soils, one application is sufficient for 2 or 3 years. Very sandy soils where leaching is a problem may require larger or more frequent applications.

### Sulfur Toxicity

Sulfate-sulfur toxicity symptoms appear as an interveinal chlorosis and scorching of the leaf margin which gradually proceeds inward. Irrigation water high in sulfate and/or soluble salts is a potential problem source normally occurring in arid and semi-arid regions. This problem is often remedied by thorough leaching. Excess sulfur in some organic soils and so-called "Kett" clay soils can cause extreme acidity when sulfur is oxidized as a result of drainage.

Sulfur dioxide in the atmosphere is an air pollutant and can cause plant injury. Plants which are relatively sensitive to sulfur dioxide injury are soybeans, field beans, alfalfa, small grains and many vegetable crops. Many of the symptoms of sulfur dioxide may resemble damage from frost, other air pollutants, chemical sprays, herbicide residues in soils, often making it very difficult to identify the cause of injury. Positive identification can only be made after all foliar symptoms and related evidence has been considered.

In general, two types of symptoms exist, chronic and acute depending on the rate of sulfur accumulation in the leaf tissues. Chronic injury is characterized by a slow accumulation causing a general chlorotic appearance. Some plants may exhibit an ivory or white type of chronic symptom while others show a strong red, brown or black coloration. Later symptoms resemble normal senescence.

Acute injury appears as marginal areas of dead tissue which at first have a full grayish-green water-soaked appearance. Later these areas take on a bleached ivory color in most plants. In small grains, tip dieback is a common symptom of the injury.

## MANGANESE

Manganese deficiency in crops is the most common micronutrient problem in Michigan. The element should not be confused with "magnesium", a secondary element.

Manganese is mainly absorbed by plants in the  $Mn^{++}$  ionic form. Although we believe it activates many enzymes, only one manganoprotein, "manganin" has been isolated from higher plants. Manganese may substitute for magnesium by activating certain phosphate-transferring enzymes, which in turn affect many metabolic processes. High manganese concentration may induce iron deficiency in plants.

Manganese availability is closely related to the degree of soil acidity. Deficient plants are usually found on slightly acid or alkaline soils, e.g., lake beds, glacial outwashes, peats and mucks. The mineral soils are usually dark at the surface and have a gray subsoil color. The deficiency in crops is seldom found on glacial till or moraine soils. Manganese-deficient organic soils and dark-colored sandy loams usually have a pH greater than 5.8. The pH of deficient mineral soils is usually above 6.5.

Crops show differences in response to manganese. The degree of response of crops to fertilizer manganese is given in Table 6.

### Manganese Deficiency Symptoms

Most crops deficient in manganese are yellowish to olive-green in color. Potatoes show noticeably reduced leaf size. Grain crops have a soft limber growth which often appears diseased. In oats, this may be described as "gray speck". Wheat and barley often show colorless spots. Corn plants do not show a marked symptom but when compared with a normal leaf blade, the deficient leaf is lighter green-colored and has parallel, yellowish stripes.

Manganese deficient plants, such as soybeans, beans, sugar beets, celery, cucumbers and cabbage show marked yellowing between the leaf veins; the veins themselves remain dark green (Figures 3, 4, 5, 6 and 7). This pattern is similar to iron deficiency but is more general over the plant. Iron deficiency is most pronounced on new growth. In sugar beets and potatoes, chlorosis begins in the younger leaves. Later, gray and black freckling may develop along the veins.

Manganese deficiency is sometimes confused with nitrogen deficiency. To help separate the two, make a nitrogen tissue test. Manganese deficient plants usually test high in nitrate-nitrogen, even higher than normal.

### Correcting Manganese Deficiency

Manganese deficiency in crops can be prevented by applying manganese fertilizer to the soil, on the foliage, or making the soil more acid. Steam or chemical fumigation will also give temporary correction. Generally, when manganese is deficient, manganese sulfate or manganous oxide is mixed with the fertilizer and applied in a band near the seed. Commercial manga-

nese sulfate is 20 to 27 percent manganese (Mn), and manganese oxide is usually about 50 percent manganese.

Recent studies have shown that manganous oxide should be finely ground to be effective. Granular manganous oxide (8 mesh) was largely ineffective. Manganous oxide powders (200 and 325 mesh) were less effective than manganese sulfate but were acceptable materials. These materials, however, do not mix well with blended fertilizers because of segregation problems due to differences in particle sizes.

Sulfitized manganous fertilizers (Manganous oxide treated with sulfuric acid) contain both manganous oxide and manganese sulfate and are considered intermediate in effectiveness unless finely ground.

TABLE 6. Relative response of selected crops to micronutrients<sup>1</sup>

Crop	Response to Micronutrient					
	Mn	B	Cu	Zn	Mo	Fe
Alfalfa	medium	high	high	low	medium	medium
Asparagus	low	low	low	low	low	medium
Barley	medium	low	medium	medium	low	high
Beans	high	low	low	high	medium	high
Blueberries	low	low	medium			
Broccoli	medium	medium	medium		high	high
Cabbage	medium	medium	medium		medium	medium
Carrots	medium	medium	medium	low	low	
Cauliflower	medium	high	medium		high	high
Celery	medium	high	medium		low	
Clover	medium	medium	medium	low	medium	
Cucumbers	medium	low	medium			
Corn	medium	low	medium	high	low	medium
Grass	medium	low	low	low	low	high
Lettuce	high	medium	high		high	
Oats	high	low	high	low	low	medium
Onions	high	low	high	high	high	
Parsnips	medium	medium	medium			
Peas	high	low	low	low	medium	
Peppermint	medium	low	low	low	low	low
Potatoes	high	low	low	medium	low	
Radishes	high	medium	medium		medium	
Rye	low	low	low	low	low	
Sorghum	high	low	medium	high	low	high
Spearmint	medium	low	low	low	low	
Soybeans	high	low	low	medium	medium	high
Spinach	high	medium	high		high	high
Sudangrass	high	low	high	medium	low	high
Sugar beets	medium	high	medium	medium	medium	high
Sweet corn	medium	low	medium	high	low	medium
Table beets	high	high	high	medium	high	high
Tomatoes	medium	medium	medium	medium	medium	high
Turnips	medium	high	medium		medium	
Wheat	high	low	high	low	low	low

<sup>1</sup> The crops listed will respond as indicated to applications of the respective micronutrient when that micronutrient concentration in the soil is low.

Chelated manganese materials in general have not been satisfactory on organic soils. In mineral soils, manganese chelates have been less effective than manganese sulfate.

Broadcast application of manganese is not recommended because of high fixation in the soil. Residual carryover of available manganese fertilizer is usually low. For this reason, manganese must be applied every year on a deficient soil. Suggested rates of application based on soil tests are given in Table 7.

When manganese is needed, foliar applications are recommended where: (1) regular fungicide and insecticide sprays are applied; (2) fertilizer is not applied in a band near the seed; or (3) deficiency symptoms appear on the foliage. The recommended rate is 1 to 2 pounds of manganese per acre, using the 1-pound rate if plants are small and the 2-pound rate when plants are medium to large in size. Spray grades of the manganese carriers are recommended to prevent plugging of the nozzles. Some fungicides, such as maneb, contain manganese, but the amount of manganese applied is generally not sufficient to correct a deficiency.

Manganese deficiency can be corrected by acidifying the soil with such materials as sulfur and aluminum sulfate. These treatments, because of high costs, are not as practical as manganese fertilizers. Acid-forming nitrogen and phosphorus fertilizers have a beneficial effect on releasing manganese, especially if banded near the plant. A pH reading of soil around the fertilizer band may be one unit more acid than the soil more distant from the fertilizer band. Some of the benefit accredited to band placement of fertilizer is due to the release of fixed soil manganese.

#### Manganese Toxicity

Excess manganese is a problem in extremely acid soils, especially if the soil is steamed or fumigated. A

toxic manganese situation may also develop in plants if excess soil and/or foliar applications are used. In the early stages, manganese toxicity symptoms may be similar to deficiency symptoms. The interveinal chlorosis in soybeans is more distinctive. The typical spotting is followed by scorching on leaf margins and leaf cupping (Figure 8).

In potatoes, the symptoms are chlorosis and black specks on the stems and underside of the leaves followed by death of the lower leaves. Manganese toxicity on acid soils can generally be corrected by adequate use of lime.

Plant tissue analysis is helpful in diagnosing manganese status. Values less than 20 ppm (parts per million) are usually considered deficient. Readings of 30 to 200 ppm are normal and those over 300 ppm are considered excessive or toxic.

Some growers have experienced plant damage from certain combination pesticide-manganese sulfate sprays. Soybeans and other crops have been damaged when 8 pounds of manganese sulfate per acre was applied by an air-blast sprayer. To prevent extensive damage, growers should always try out the spray program on a limited acreage. If there is injury, it can be detected within 48 hours after application.

#### BORON

Boron primarily regulates the metabolism of carbohydrates in plants. The need varies greatly with different crops. Rates required for responsive crops such as alfalfa, beets and celery can cause serious damage to small grains, beans, peas, and cucumbers. Boron deficiency may occur on both alkaline and acid soils but is more prevalent on the calcareous, alkaline soils. Soil types deficient in boron are usually the sandy loams, dark-colored sandy loams, organic soils and some fine textured lake-bed soils.

TABLE 7. Manganese recommendations for band application on mineral and organic soils.

Soil test ppm Mn	Manganese (0.1 N HCl Extraction)							
	MINERAL SOILS				ORGANIC SOILS			
	Above pH 6.5		pH 6.0-6.5		Above pH 6.4		pH 5.8-6.4	
	Response	Mn-lbs/A	Response	Mn-lbs/A	Response	Mn-lbs/A	Response	Mn-lbs/A
Below 5	Probable	8	Probable	6	Certain	16	Certain	12
5-10	Probable	6	Possible	4	Certain	12	Probable	8
11-20	Possible	4	None	0	Probable	8	Possible	4
21-40	None	0	None	0	Possible	4	None	0
Above 40	None	0	None	0	None	0	None	0

### Boron Deficiency Symptoms

Boron deficiency in crops shows up as a breakdown of the growing tip tissue or as a shortening of the terminal growth. This may appear as a rosetting of the plant. Internal tissues of beets, turnips and rutabagas show breakdown and corky, dark discoloration.

Boron deficiency and leafhopper damage in alfalfa are often confused. The deficiency shows up as a yellowish to reddish-yellow discoloration of the upper leaves, short nodes and few flowers (Figure 9). It will kill growing tips of alfalfa, and regrowth comes after a new shoot is initiated at a lower axil. Leafhopper damage shows up as a "V"-shaped yellowing of the affected leaves and may appear on any or all parts of the plant; the growing tip is usually normal and the plant may support abundant flowers. Often, when the soil is dry and plant growth is retarded, both boron deficiency and leafhopper injury occur in the same field.

Deficiency in cauliflower shows up as a darkening of the head and is associated with hollow and darkened stems. Hollow stem also can be caused by adverse weather conditions. Boron deficiency usually appears in small spots and may spread until the entire head is discolored.

In sugar beets, the first symptoms are white, netted chapping of upper blade surface or wilting of tops. Later, transverse (crosswise) cracking of petioles, death of the growing point and heart rot of the root develops if the deficiency becomes severe.

In celery, the first symptoms are brownish mottling along the margins of the bud leaves. Stems become brittle with brown strips along the ribs. Crosswise cracks later appear on the stems (Figure 10).

### Correcting Boron Deficiency

Crops show a wide range of response to boron fertilizers (see Table 6). The boron recommendations for soil applications are 1.5 to 3 pounds for highly responsive crops and 0.5 to 1 pound per acre for low to medium responsive crops. Occasionally, certain deficient soils may require up to 5 pounds of boron per acre for cauliflower and red beets. The suggested rate for foliage application is 0.3 pound of boron per acre for high responsive crops and 0.1 pound for medium responsive crops.

The boron carrier most used in fertilizers is sodium borate and ranges from 10 to 20 percent boron. "Solubor" is a trade name for a sodium borate that contains 20.5 percent boron. This compound is commonly used as a foliage spray or in liquid fertilizers.

Boron may be mixed with regular N-P-K fertilizer, applied separately on the soil, topdressed for alfalfa,

sidedressed for row crops or sprayed on the plant. Be sure to obtain complete mixing when boron is applied with other fertilizers. Segregation, because of particle size differences, is often a problem. Boron should never be used in combination seedlings containing legumes and grass or small grain because of injury to the grass or small grain. Boron for the legume should be applied as a topdressing after grass has become well established or the grain companion crop has been harvested. Care should also be taken when fertilizers containing boron are banded near the seed or plant.

### Boron Toxicity

Problems with excess boron are most likely to occur on acid, sandy soils or neutral-to-alkaline soils which have been acidified. Unless recommended rates are used, injury to sensitive crops may occur from residual carryover. Where rates double the standard recommendations were used for cauliflower, residual carryover has caused stunted bean and cucumber growth. Boron toxicity is characterized by yellowing of the leaf tip, interveinal chlorosis and progressive scorching of the leaf margin (Figure 11). In soybeans, the leaves may have a rust-like appearance. High levels of calcium may increase the tolerance of plants for boron.

### ZINC

Zinc is essential for plant growth because it controls the synthesis of indoleacetic acid, which dramatically regulates plant growth. Zinc is also active in many enzymatic reactions. Research shows a need for zinc in many areas where navy beans are grown. Corn, onions, soybeans, and barley have shown benefits on some locations. Other states report that sudangrass, sorghum, tomatoes and potatoes have been responsive.

Soil types associated with zinc deficiency are usually neutral to alkaline in reaction. The more alkaline the soil the greater is the need for zinc. Deficiency is particularly noticeable on crops growing where calcareous subsoils are exposed by land leveling or erosion, or where subsoil is mixed with topsoil such as after tiling and spoil-bank leveling. Lake bed soils in the Saginaw Valley and peats show the greatest need in Michigan. Soil series where zinc deficiency is most likely to occur are listed in Table 8.

Observations and field tests show that navy beans following sugar beets often need zinc. Large quantities of phosphorus fertilizer used for sugar beets and the high zinc uptake are believed to cause the problem.

Zinc deficiency varies from year to year. Wet, cool, cloudy weather during the early growth enhances the



Figure 8. Manganese toxicity in field beans. Scorching of the leaf margins and leaf cupping.

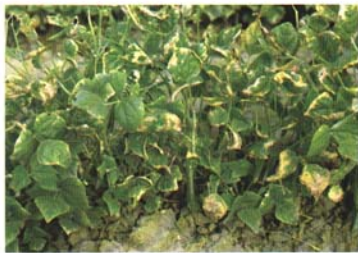


Figure 11. Boron toxicity in navy beans. Yellowing of the leaf tip followed by interveinal chlorosis and scorching of the leaf margins.



Figure 9. Boron-deficient alfalfa. Yellow to reddish-yellow discoloration of the upper leaves, short nodes and few flowers. Often confused with leafhopper damage.

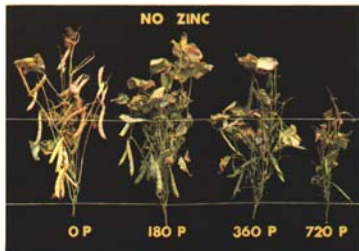


Figure 12. Phosphorus-Zinc interaction in field beans. Brownish leaf discoloration, stunted plants and pods fail to develop. Beans above received increasing rates of phosphorus fertilizer without zinc.

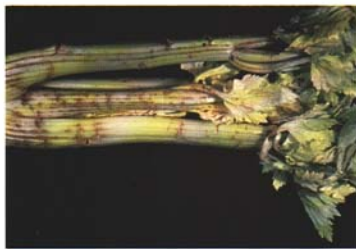


Figure 10. Boron-deficient celery. Also known as "crack stem" because brown cracks develop along the stem rib and later across the stem.

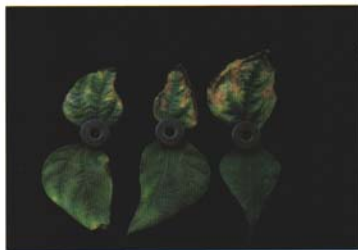


Figure 13. Zinc deficiency in field beans. Pale-green leaves, yellow near the tips and outer edges at or soon after emergence. Leaves later become dwarfed or deformed and die. Plants are slow to mature. Normal leaf, upper left.

**TABLE 8. Soil series which often have an alkaline reaction and are likely to need zinc fertilizer for responsive crops.**

Series	Management group	Series	Management group
Alpena	Ga	Markey	M/4c
Bach	2.5c-c	Sanilac	2.5b-c
Carlisle <sup>1</sup>	Mc	Tappan	2.5c-c
Charity	1c-c	Thomas	1.5c-c
Edwards	M/mc	Tobico	5c-c
Essexville	4/2c-c	Warners	M/mc
Gagetown	2.5a-c	Whittemore	1.5c-c
Houghton <sup>1</sup>	Mc	Wisner	1.5c-c
Lupton	Mc		

<sup>1</sup> These soils are not alkaline in reaction but have shown a need for zinc fertilizer.

deficiency. Considerable trouble in corn is occasionally noted in June but the deficiency disappears after the soils dry out and warm up. Crops on poorly drained organic soils show a deficiency probably because of restricted root growth.

High soil phosphorus levels can induce zinc deficiency, especially in responsive crops (see Figure 12). For years, the cause of this interaction was suspected to be the formation of an insoluble zinc phosphate in soil, which reduced the concentration of zinc in the soil solution to deficiency levels. Zinc phosphate has since been shown to be soluble in soil and an acceptable source of zinc when finely ground. High levels of phosphorus in plants have now been shown to restrict zinc movement within the plant resulting in accumulation in the roots and deficiency in the tops. Hence, large applications of phosphorus fertilizer may contribute to zinc deficiency in vegetable and field crops.

#### Zinc Deficiency Symptoms

Bean plants deficient in zinc first become light green in color. When the deficiency is severe, the area between the veins of the leaves becomes pale green and then yellow near the tips and outer edges. The leaves in early stages are deformed, dwarfed and crumpled and in later stages look like they have been killed by sun scald (Figure 13). On zinc deficient plants, the terminal blossoms set pods which drop off, delaying maturity.

Zinc deficiency in corn appears as a yellow striping of the leaves. Areas of the leaf near the stalk may develop a general white-to-yellow discoloration. In severe deficiency, the plants have shortened internodes and the lower leaves show a red streak about one-third of

the way from the leaf margin (Figure 14). Plants growing in dark sandy or organic soils usually show brown or purple nodal tissues when the stalk is split. This is particularly noticeable in the lower nodes.

Deficiency in onions shows up as a stunting, with marked twisting and bending of yellow striped tops (Figure 15). In potatoes, early symptoms are similar to leaf roll. The plants are generally more rigid, have smaller leaves than normal plants and the upper internodes are shorter.

#### Zinc Fertilizer Carriers

A number of zinc compounds can be used to correct a deficiency. Zinc sulfate, zinc oxide, zinc chloride, zinc sulfide and zinc carbonate are common inorganic salts. Organic compounds such as zinc chelates (zinc EDTA and zinc NTA) are about 5 times more effective than equivalent amounts of zinc found in inorganic salts.

Organic carriers, however, have a lower zinc content ranging from 10 to 14 percent. The zinc content of zinc sulfate ranges from 25 to 36 percent and that of zinc oxide from 70 to 80 percent. In field tests, granular zinc oxide was not as effective as was the powdered formulation. The test also showed that mixing the zinc carrier with the fertilizer was more effective than incorporating the carrier in the granule.

#### Rates, Methods of Applying Zinc Fertilizer

To be effective, zinc must be applied early in moist soil and near the seed. Mixing zinc with a phosphate fertilizer, such as 6-24-12, is acceptable.

Suggested rates of application based on soil tests are given in Table 9. Seed treatment with zinc oxide is not recommended. Tests showed that 1 pound of zinc per acre from zinc oxide applied on bean seed reduced emergence and yields in most locations.

Sidedressed applications of zinc after the crop has emerged have not been very effective. If a zinc deficiency problem is diagnosed after emergence of the crop, spray the foliage with 0.5 to 1.0 pound of zinc per acre. This amount can be found in 1.5 to 3.0 pounds of zinc sulfate. The solution should not exceed 5 pounds of the salt per hundred gallons of water. This is about 1/2 percent solution. Response to spray application is usually obvious in 10 days. It may be apparent in 5 days if the treatment is applied when the plants are in a vigorous state of growth. Plants with waxy leaves such as onions may need a wetting agent in the water to obtain good foliage cover.

Conflicting results have been obtained by spraying some crops such as corn, onions and potatoes. The rea-

son may be poor transfer of zinc down into the roots which also need the element to perform their functions. If foliage sprays are used, apply them early to obtain best results.

Some fungicides such as zincb, "M-45," tank-mix naban and zinc sulfate contain zinc. Used as a foliage treatment, the material will help correct zinc deficiency, however, do not rely on them entirely if a deficiency exists.

#### Zinc Carryover

Residual carryover of available zinc varies from slight to moderate amounts, increasing as soils become less calcareous (alkaline). On highly responsive soils, zinc broadcast at rates above 25 pounds per acre showed good carryover for 7 years after application. When zinc is banded at the rate of 3 to 4 pounds per acre, yearly applications are needed. After adding 25 pounds of zinc per acre by banding annually, the rate of zinc application can often be reduced or eliminated.

#### Soil and Plant Tissue Tests for Zinc

Plant tests can help diagnose a critical or near critical level of zinc. Tissues containing less than 20 ppm of zinc are often deficient, values of 30 to 100 ppm are normal and values over 200 ppm are considered excessive to toxic. Several commercial and state laboratories are available to determine the zinc content in plant materials. Zinc response and suggested rates of banded zinc for soil test levels are presented in Table 9. Recommendations are based on soil pH as well as available zinc level.

#### Zinc Toxicity

Excessive zinc levels may occur on extremely acid soils (less than pH 5.0). Specific cases of zinc toxicity

have not been diagnosed. Instead, high soil zinc concentrations usually induce an iron deficiency. Hence, caution in diagnoses is necessary.

## MOLYBDENUM

Molybdenum functions largely in the enzyme systems of nitrogen fixation and nitrate reduction. Plants which can neither fix nitrogen nor incorporate nitrate into their metabolic system because of inadequate molybdenum become nitrogen deficient.

Molybdenum is required in very minute amounts. Normal tissues usually contain between 0.8 and 5.0 ppm; some plants may contain as high as 15 ppm. Deficient plants usually contain less than 0.5 ppm. Certain nonresponsive crops such as grass and corn may contain as low as 0.1 ppm. The responsive crops are cauliflower, broccoli, lettuce, onion, spinach, soybean and clover. Very few soils in Michigan show a need for molybdenum fertilizers. Those that do are fibrous peats and acid sandy soils. Sandy soils are commonly used for potato production and then for growing cauliflower, soybeans and clover. Organic soils that contain large amounts of bog iron often need molybdenum for normal plant growth.

#### Molybdenum Deficiency Symptoms

Molybdenum deficiency in clover shows up as a general yellow to greenish-yellow color of the foliage, stunting and lack of vigor. The symptoms are similar to those caused by nitrogen starvation. Early stages of the deficiency in cauliflower and broccoli appear as a marginal scorching, rolling or curling upward and withering and crinkling of the leaves (Figure 16). In later stages of growth, the deficiency shows up as "whiptail" especially in the younger leaves. Older leaves show marked yellow mottling between the veins

TABLE 9. Zinc recommendations for band application on mineral and organic soils.<sup>1</sup>

Soil Test ppm Zn	Zinc for Mineral and Organic Soils (0.1 N HCl Extraction)					
	Above pH 7.5		pH 6.7 to 7.4		Below pH 6.7	
	Response	Zn-lbs/A	Response	Zn-lbs/A	Response	Zn-lbs/A
Below 2	Certain	5	Probable	3	Response	2
3-5	Probable	3	Possible	3	None	0
5-10	Probable	3	Possible	2	None	0
11-15	Possible	2	None	0	None	0
Above 15	None	0	None	0	None	0

<sup>1</sup> Recommended rates are for inorganic salts such as zinc sulfate. Use one-fourth this rate for chelated materials.





Figure 14. Zinc-deficient corn. White- to yellow-striping of the leaves near the stalk. Shortened internodes with reddish discoloration of the nodal tissues.



Figure 15. Zinc-deficient onions. Yellow striping, twisting and bending of the tops.



Figure 16. Molybdenum deficiency in cauliflower. Yellow mottling between the leaf veins, rolling or curling upward and crinkling of the leaves. Symptoms resemble nitrogen deficiency.



Figure 17. Copper-deficient onion. Tip dieback of the tops. Poor pigmentation of the bulb.



Figure 18. Copper deficiency in sudangrass. Wilting and eventual death of the leaf tips. Symptoms may resemble frost damage.

and a crinkling of the leaves. In onions it shows up as a dying of the leaf tips. Below the dead tip, the leaf shows an inch or two of wilting and flabby formation. As the deficiency progresses, the wilting and dying advances down the leaves. In severe cases the plant dies.

The usual carriers of molybdenum are sodium or ammonium molybdate. These salts contain about 40 percent of the element.

#### Correcting Molybdenum Deficiency

Molybdenum deficiency can best be corrected by seed treatment. Dissolve one-half ounce of the molybdate compound in 3 tablespoons of water and mix with sufficient seed to plant 1 acre. Do not use excess water as this can cause the chemical to penetrate the seed embryo and cause injury. Mix the seed thoroughly and let dry. It may be advisable to use some suitable fungicide dust to help dry the seed. Suppliers of the molybdate compound often sell the product in 2-ounce packages which will treat enough seed for 4 acres.

Foliar sprays may be used by applying 2 to 3 ounces of the compound per acre. Use wetting agents in the spray when applying the solution to cauliflower or onions.

Soil acidity has a marked influence on the need for molybdenum; the greater the acidity, the greater the need for molybdenum. Research plots on a Montcalm sandy soil showed that molybdenum content of cauliflower was increased 5-fold by liming from pH 4.9 to pH 6.7. In a Houghton muck, the content of molybdenum increased over 3-fold when the pH was raised from 5.4 to 7.2. Liming severely deficient soils, however, will not completely correct the deficiency.

#### Molybdenum Toxicity

Plants appear quite tolerant to high soil molybdenum levels as there is no record of molybdenum toxicity under field conditions. In greenhouse studies, tomato leaves turned golden-yellow and cauliflower seedlings turned purple. Animals fed foliage high in molybdenum may need supplemental copper to counteract the molybdenum.

### COPPER

Copper is essential for growth and activates many enzymes. A deficiency interferes with protein synthesis and causes a buildup of soluble nitrogen compounds.

Normal plants contain 8 to 20 ppm copper while deficient plants usually contain less than 6 ppm. In each ton of dry hay there is about 0.002 pounds of

copper. However, without this element all crops fail to grow. Fortunately, most Michigan soils have sufficient copper. Peaty soils low in ash are about the only ones with a deficiency. If the problem does appear in mineral soils, it will most likely be on acid sandy soils which have been cropped heavily and liberally supplied with N-P-K fertilizers. Copper applied to soil is not easily leached, nor is it used to a great extent by the crop. For this reason, no further copper fertilization is needed on organic soils if a total of 20 pounds per acre has been applied for low-responsive crops and 40 pounds per acre for high-responsive crops.

#### Copper Deficiency Symptoms

Copper deficiency in many plants shows up as wilting and eventual death of the leaf tips (Figures 17 and 18). In grain the leaves are yellowish in color and the leaf tips show a disorder similar to frost damage. Carrot roots, wheat grain and onion bulbs show poor pigmentation. Table 6 shows the variations in crop response to copper fertilizer.

#### Correcting Copper Deficiency

Rates of copper commonly used in highly responsive crops are 3 to 6 pounds per acre depending on pH. These rates should be doubled on fields that have never received copper. Application rates for organic soils based on soil tests are given in Table 10.

Common carriers of copper are the sulfate and the oxide. Copper sulfate has a blue color and is easily identified in most fertilizers. It has a copper content of about 25 percent. Copper oxide, a brown material, has a copper content of 60 to 80 percent. In field tests, this material has been as effective as copper sulfate.

TABLE 10. Copper recommendations for band application on organic soils.

1.0 N HCl Extraction		
Soil test ppm Cu	Plant response	Copper Lbs./A
Below 9	Probable	6
10-20	Possible	3
21-40	None	0
41-80	None	0
81-160	None	0
Above 160	Excessive	0

### Copper Toxicity

Excessive soil copper levels have not been a problem in crop production. However, the potential for copper toxicity does exist since copper is applied annually for some vegetables either as a soil amendment or a component of some fungicides. Accumulative copper applications of 100 pounds per acre have reduced cucumber and snapbean yields on sandy soils. Copper is tightly absorbed by most soils and will not leach out. Once a copper toxicity problem develops, it is virtually impossible to alleviate.

### IRON

Iron is a constituent of many organic compounds in plants. It is essential for the synthesis of chlorophyll, which gives rise to the green pigment of plants. Iron deficiency can be induced by high levels of manganese. High iron can also cause manganese deficiency.

### Iron Deficiency Symptoms

A lack of iron in plant tissue cannot be predicted on the basis of concentration. Deficiency symptoms, however, are marked and show up first in terminal leaves as a light yellowing. The symptoms are very similar to manganese deficiency. A lack of iron in field and vegetable crops is not common in soils with pH below 7.0. Iron chelates were helpful when growing navy beans on calcareous soils in Michigan.

Iron deficiency is a common problem in the western states where the soils contain considerable sodium and calcium. In Michigan, woody plants such as pines, pin oaks, roses, certain ornamentals and acid-demanding plants such as blueberries, azaleas and rhododendrons may need iron. Lawns and particularly putting greens on golf courses sometimes show a lack of iron for grass because of high pH and high levels of phosphorus.

Iron deficiency in many woody plants appears when they are grown in soils low in organic matter and high in pH. Mixing in organic materials such as manure or acid peat will help increase the availability of the iron.

Spagnum peat moss in mixtures with sand, perlite or vermiculite intensifies the need for iron fertilizers for the production of petunias, snapdragons, tomatoes and other bedding plants.

### Correcting Iron Deficiency

Soil treatments usually require applications of iron chelates at the rate equivalent to 1/2 to 1 pound of iron per acre. Often, it is difficult to correct iron deficiency in plants with soil applications when soils are alkaline.

Under such conditions, foliage sprays are recommended. Use iron sulfate, iron chelates or iron citrate according to supplier's recommendations. Wet foliage thoroughly. Soil applications are effective if soils are acid or neutral in reaction. Iron chelates, though more expensive than iron sulfate, persist for longer periods of time. For bedding plant production, use 1 to 2 ounces of elemental iron per cubic yard of soil mix.

To help prevent an iron problem do not use excessive amounts of lime or phosphate. Apply chemicals or fertilizers to increase the soil acidity and add organic matter.

### Iron Toxicity

Injury due to high soil iron concentrations has not been common under natural soil conditions. Toxic situations occur primarily when excess soluble iron salts have been applied as foliar sprays or soil amendments. First symptoms of iron toxicity appear as necrotic spots on the leaves.

### FOLIAR APPLICATION OF SECONDARY- AND MICRO-NUTRIENTS

Nutrients can be absorbed through plant leaves from foliar applications. Foliar-applied micronutrients in some situations are more readily available to the plant than soil-applied micronutrients, but foliar applications do not provide continuous nutrition as do soil applications. Hence, foliar spray programs may be used to supplement soil applications of fertilizer or to correct deficiencies which develop in mid-season.

When spray equipment is available, secondary- and micro-nutrient needs of plants may be met with a good spray program. Suggested secondary- and micro-nutrient sources and rates per acre as sprays are given in Table 11. Use low rates for young plants and higher rates when plants develop dense foliage.

Micronutrient chelates are generally no more effective than water soluble inorganic sources when foliar applied.

For a preventive spray program, spray the crop about 4 weeks after emergence or transplanting. Since many micronutrients are not readily translocated within the plant, a second spray will be needed 2 weeks later to cover the new foliage. When a known nutrient deficiency develops, spray the crop with the appropriate nutrient at the recommended rate on a 10-day schedule until the deficiency is corrected. Complete coverage of the foliage is important, especially for iron. Adding a wetting agent to the spray solution will improve the coverage of the foliage and may increase

absorption especially for crops with waxy surfaces, such as cauliflower and onions.

Micronutrients may be mixed with most fungicides and insecticides, however some combinations are incompatible and may cause injury. When in doubt spray only a limited acreage until compatibility is established. Any injury will usually appear within 48 hours. Table 12 may be used as a guide for obtaining the desired mixture of various secondary- and micro-nutrient carriers.

**TABLE 11. Suggested rates and sources of secondary- and micro-nutrients for foliar application<sup>1</sup>.**

Element	Lbs. element per acre	Suggested Source
Calcium (Ca)	1-2	Calcium chloride or calcium nitrate
Magnesium (Mg)	1-2	Magnesium sulfate (epsom salts)
Manganese (Mn)	1-2	Soluble manganese sulfate or finely ground manganese oxide
Copper (Cu)	0.5-1.0	Basic copper sulfate or copper oxide
Zinc (Zn)	0.3-0.7	Zinc sulfate
Boron (B)	0.1-0.3	Soluble borate
Molybdenum (Mo)	0.06	Sodium molybdate (2 ounces)
Iron (Fe)	1-2	Ferrous sulfate

<sup>1</sup> Use a minimum of 30 gallons of water per acre.

In developing a spray program, remember that some fungicides and insecticides contain copper, manganese or zinc. The quantities present in these materials may or may not be sufficient.

Additional information concerning specific nutrients may be found in their respective sections.

**TABLE 12. Pounds of secondary- or micro-nutrient carrier needed to obtain the desired amount of the element per acre<sup>1</sup>.**

	Pounds of element desired per acre							
	.1	.2	.3	.4	.5	1.0	1.5	2.0
1	10.0	20.0	30.0	40.0	50.0	100.0	150.0	200.0
2	5.0	10.0	15.0	20.0	25.0	50.0	75.0	100.0
4	2.5	5.0	7.5	10.0	12.5	25.0	37.5	50.0
6	1.7	3.4	5.0	6.0	8.3	16.7	25.0	34.0
8	1.2	2.5	3.8	5.0	6.2	12.5	18.7	25.0
10	1.0	2.0	3.0	4.0	5.0	10.0	15.0	20.0
12	.8	1.7	2.5	3.4	4.2	8.4	12.6	17.0
14	.7	1.4	2.1	2.9	3.6	7.2	10.8	14.0
16	.6	1.3	1.9	2.5	3.2	6.3	9.5	13.0
18	.5	1.1	1.7	2.3	2.8	5.6	8.4	11.0
20	.5	1.0	1.5	2.0	2.5	5.0	7.5	10.0
25	.4	.8	1.2	1.6	2.0	4.0	6.0	8.0
30	.3	.7	1.0	1.4	1.7	3.4	5.1	7.0
35	.2	.6	.9	1.2	1.5	2.9	4.4	6.0

<sup>1</sup> To convert from dry to liquid: 1 pint equals about 1 pound.

### Acknowledgement

The use of color in this publication was made possible by contributions from:

- AMERICAN AGRICULTURAL CHEMICAL CO.
- DIAMOND SHAMROCK CHEMICAL CO.
- DOW CHEMICAL U.S.A.
- EAGLE-PICHER, INC.
- EASTMAN CHEMICAL PRODUCTS, INC.
- FARM BUREAU SERVICES, INC.
- FORD MOTOR CO.
- INTERNATIONAL MINERALS AND CHEMICAL CORP.
- MARTIN MARIETTA CHEMICALS

*The information given herein is for educational purposes only. Reference to commercial products or trade names is made with the understanding that no discrimination is intended and no indorsement by the Cooperative Extension Service is implied.*

• • •

*Issued in furtherance of cooperative extension work in agriculture and home economics, acts of May 8, and June 30, 1914, in cooperation with the U.S. Department of Agriculture. Gordon E. Guyer, Director, Cooperative Extension Service, Michigan State University, East Lansing, Michigan 48824. IP2R-11:73-20M-JH*