

## **MSU Extension Publication Archive**

Archive copy of publication, do not use for current recommendations. Up-to-date information about many topics can be obtained from your local Extension office.

Unwanted Emerald Ash Borer  
Michigan State University Extension Service  
Michigan Department of Natural Resources  
USDA Forest Service  
Michigan Agricultural Experiment Station  
September 2003  
2 pages

The PDF file was provided courtesy of the Michigan State University Library

**Scroll down to view the publication.**

# UNWANTED!

## EMERALD ASH BORER



### Healthy ash tree

The borer prefers white, green, blue and black ash, but not mountain ash.



### Sick ash trees



Adults emerge leaving D-shaped exit holes



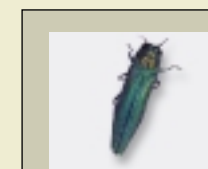
Larvae feed under bark, creating S-shaped galleries



### S-shaped galleries



Larvae overwinter under bark

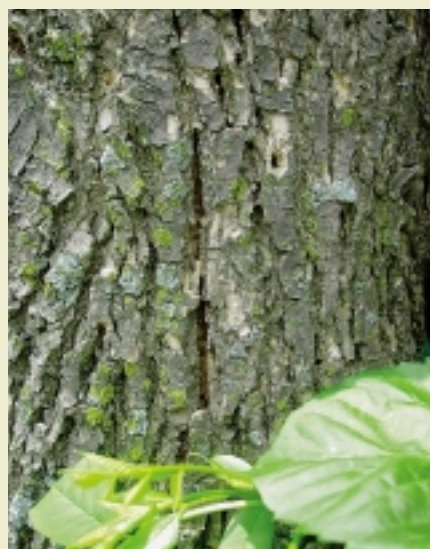


Adult (1/2 inch)



Larva (1 1/2 inches)

**Actual size**



**Ash bark**



**Ash leaf**

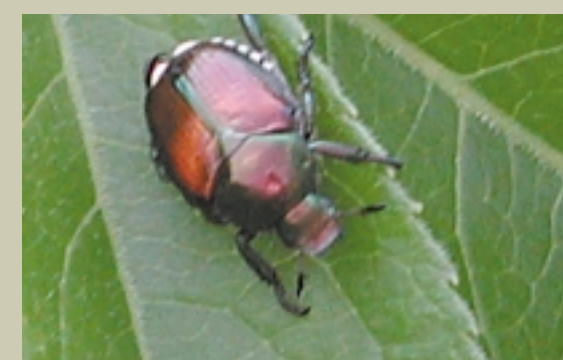


**White ash seeds**

### Other insects that are mistaken for emerald ash borer:



Banded Ash Borer



Japanese Beetle



Six-spotted Tiger Beetle

**If seen, call the Michigan Department of Agriculture EAB hotline:**  
**1-866-325-0023**  
[www.emeraldashborer.info](http://www.emeraldashborer.info)

Produced by:  
 Michigan State University Extension  
 Michigan Department of Natural Resources  
 USDA Forest Service  
 Michigan Agricultural Experiment Station

MSU is an affirmative-action, equal-opportunity institution.

E-3004, New, September 2003

# **UNWANTED!**

---

## **EMERALD ASH BORER**

---



Emerald  
Ash Borer



If seen, call the  
Michigan Department of Agriculture EAB Hotline:  
1-866-325-0023  
[www.emeraldashborer.info](http://www.emeraldashborer.info)

Produced by:  
Michigan State University Extension  
Michigan Department of Natural Resources  
USDA Forest Service  
Michigan Agricultural Experiment Station