

MSU Extension Publication Archive

Archive copy of publication, do not use for current recommendations. Up-to-date information about many topics can be obtained from your local Extension office.

Ash Tree Identification
Michigan State University
Michigan State University Extension
Kimberly Rebek and Mary Wilson
Issued May 2005
2 pages

The PDF file was provided courtesy of the Michigan State University Library

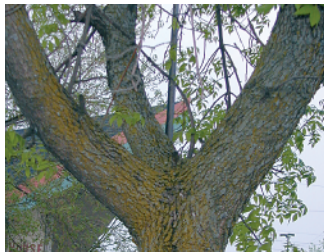
Scroll down to view the publication.

Ash Tree Identification

Ash species attacked by emerald ash borer include green (*Fraxinus pennsylvanica*), white (*F. americana*), black (*F. nigra*), and blue (*F. quadrangulata*), as well as horticultural cultivars of these species. Green and white ash are the most commonly found ash species in the Midwest with blue ash being rare.

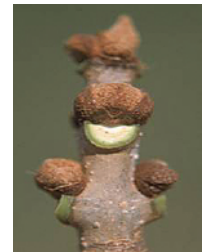
While other woody plants, such as mountainash and pricklyash, have "ash" in their name, they are not true ash, or *Fraxinus* species. Only true ash are susceptible to attack by emerald ash borer.

To properly identify ash trees, use the following criteria:



Branch and Bud Arrangement

Branches and buds are directly across from each other and not staggered. When looking for opposite branching in trees, please consider that buds or limbs may die; hence not every single branch will have an opposite mate.



Diane Brown-Rytlewski

Leaves

Leaves are compound and composed of 5-11 leaflets. Leaflet margins may be smooth or toothed. The only other oppositely branched tree with compound leaves is boxelder (*Acer negundo*), which almost always has three to five leaflets. White ash (on left) and green ash (on right)



*Paul Wray, Iowa State University

Bark

On mature trees (left), the bark is tight with a distinct pattern of diamond-shaped ridges. On young trees (right), bark is relatively smooth.



*Paul Wray, Iowa State University

Seeds

When present on trees, seeds are dry, oar-shaped samaras. They usually occur in clusters and typically hang on the tree until late fall, early winter.



Tree Species Resembling Ash

Boxelder (*Acer negundo*)

Exhibits opposite branching and compound leaves. However, has 3 to 5 leaflets (instead of 5 to 11) and the samaras are always in pairs instead of single like the ash.



*Paul Wray, Iowa State University *Bill Cook, Michigan State University

European Mountainash (*Sorbus aucuparia*)

Leaves are compound with alternate (staggered) branching. Tree bears clusters of creamy white flowers in May. Fruits are fleshy, red-orange berries.



Diane Brown-Rytlewski *Boris Hrasovec, University of Zagreb

Shagbark Hickory (*Carya ovata*)

Leaves are compound with 5 to 7 leaflets, but the plant has an alternate branching habit. Fruit are hard-shelled nuts in a green husk.



*Paul Wray, Iowa State University *Paul Wray, Iowa State University

Elm (*Ulmus species*)

Branching is alternate and the leaves are simple with an unequal leaf base.



*Paul Wray, Iowa State University *Paul Wray, Iowa State University



*Paul Wray, Iowa State University

Black Walnut (*Juglans nigra*)

Leaves are compound with 9 to 15 leaflets, but the plant has an alternate branching habit. Fruit is a large dark brown nut inside a green husk.



*Paul Wray, Iowa State University

Authors: Kimberly Rebek and Mary Wilson

*www.forestryimages.org