

## **MSU Extension Publication Archive**

Archive copy of publication, do not use for current recommendations. Up-to-date information about many topics can be obtained from your local Extension office.

Signs and Symptoms of the Emerald Ash Borer  
Michigan State University  
Michigan State University Extension

Issued February 2005  
2 pages

The PDF file was provided courtesy of the Michigan State University Library

**Scroll down to view the publication.**

# Signs and Symptoms of the Emerald Ash Borer

## Adult



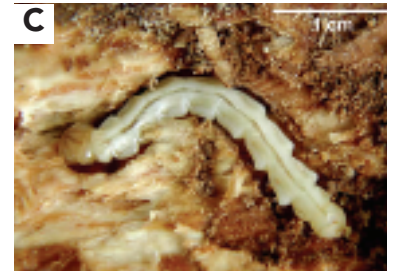
Michigan State University



Michigan State University

- Bright, metallic green (Figs. A, B).
- 1/2 inch long, flattened back (Figs. A, B).
- Purple abdominal segments beneath wing covers.

## Larva



D. Cappaert, MSU

- Creamy white, legless (Fig. C).
- Flattened, bell-shaped body segments (Fig. C).
- Terminal segment bears a pair of small appendages.

## Canopy Dieback



E. Rebek, MSU



E. Rebek, MSU

- Begins in top one-third of canopy (Fig. D).
- Progresses until tree is bare (Fig. E).

## Epicormic Shoots



J. Smith, USDA APHIS PPQ



J. Smith, USDA APHIS PPQ

- Sprouts grow from roots and trunk (Figs. F, G).
- Leaves often larger than normal.



## Bark Splitting



J. Smith, USDA APHIS PPQ



A. Storer, Mich. Tech. Univ.

- Vertical fissures on bark (Fig. H) due to callous tissue formation (Fig. I).
- Galleries exposed under bark split.

## Serpentine Galleries and D-shaped Exit Holes



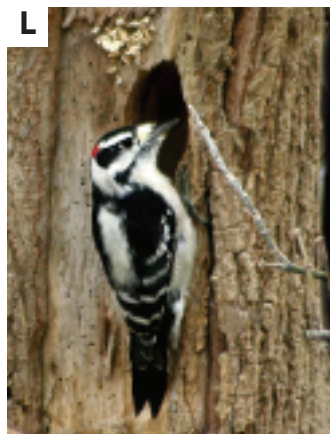
D. Cappaert, MSU



D. Cappaert, MSU

- Larval feeding galleries typically serpentine (Fig. J).
- Galleries weave back and forth across the woodgrain.
- Packed with frass (mix of sawdust and excrement).
- Adults form D-shaped holes upon emergence (Fig. K).

## Increased Woodpecker Activity/Damage



D. Cappaert, MSU



Karen D'Angelo, MSUE

- Several woodpecker species (Fig. L) feed on EAB larvae/pupae.
- Peck outer bark while foraging (Fig. M).
- Create large holes when extracting insects (Fig. M).